

ROAD SAFETY STATISTICAL SUMMARY

May 2016



TRANSPORT
ACCIDENT
COMMISSION

60 Brougham Street
Geelong Vic 3220
PO Box 742
Geelong Vic 3220
Ausdoc DX 216079 Geelong

Telephone 1300 654 329
STD Toll Free 1800 332 556
Fax: 03 9656 9300
www.tac.vic.gov.au
ABN 22 033 947 623

Contents

Status Report.....	4
Fatalities.....	4
Claims involving an acute hospital admission*	5
Fatalities: 12 months to May 2016	6
Claims involving acute hospitalisation over 14 days: 12 months to November 2015 (claim acceptance date)..	8
Claims involving an acute hospital admission: 12 months to November 2015 (claim acceptance date).....	10
Fatalities: Victorian monthly totals since 1951	12
Fatalities by Week (2009 to 2016).....	13
The National Picture	14
Booze-Bus Random Breath Testing	15
Mobile Safety Camera Data	15
Explanations and References	16
Useful Internet Sites	17
Figures	18

Note about the data in this report

- All data provided in this report is the data most recently available at time of production. Fatalities, breath-test data and safety camera data are updated to the end of report month. A 6-month lag applies to TAC claims data.
- Reported data will have one extra day of exposure for leap years.
- Data is subject to revision as additional information about known accidents/claims is received, and as new accident/claim reports are received and processed.

*An acute hospital admission refers to a hospital admission that occurred within 7 days of accident.

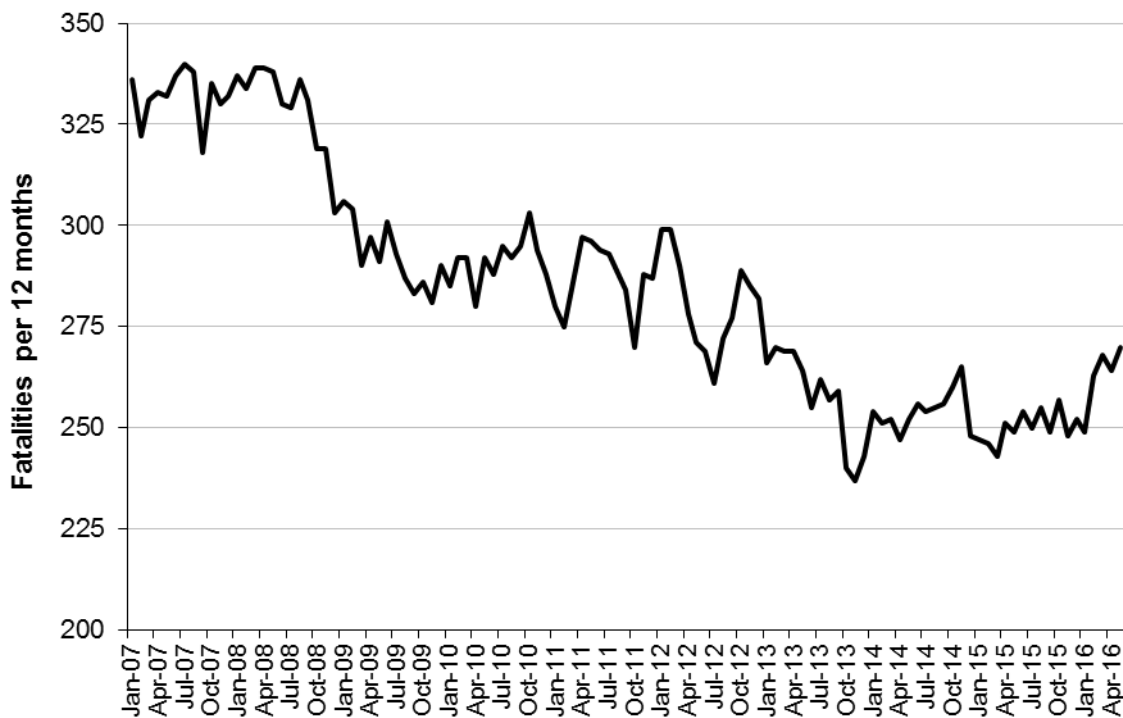
Status Report

Fatalities

- The rolling 12 month number of road fatalities in May 2016 stands at 270. The number of fatalities in 2015 stood at 249 (8.4% increase).
- 27 people were fatally injured in May 2016 on Victorian roads. This compares to 21 in May 2015.

Fatalities (rolling 12 month, to end May 2016)

Category	2016	2015	2014	2016 v 2015		2016 v 2014		5 Year Av
Fatal Injuries (Rolling 12 Month Total)								
Fatal (to May)	270	249	252	+21	(+8.4%)	+18	(+7%)	261
per 10,000 veh	0.58	0.55	0.56	+0.03	(+5%)	+0.02	(+4%)	0.59
per 100,000 pop	4.52	4.23	4.36	+0.29	(+7%)	+0.16	(+4%)	4.53
Accidents (Rolling 12 Month Total)								
Fatal (to May)	254	226	227	+28	(+12%)	+27	(+12%)	239
per 10,000 veh	0.55	0.49	0.51	+0.06	(+12%)	+0.04	(+8%)	0.51
per 100,000 pop	4.25	3.84	3.93	0.41	(+11%)	+0.32	(+8%)	3.96

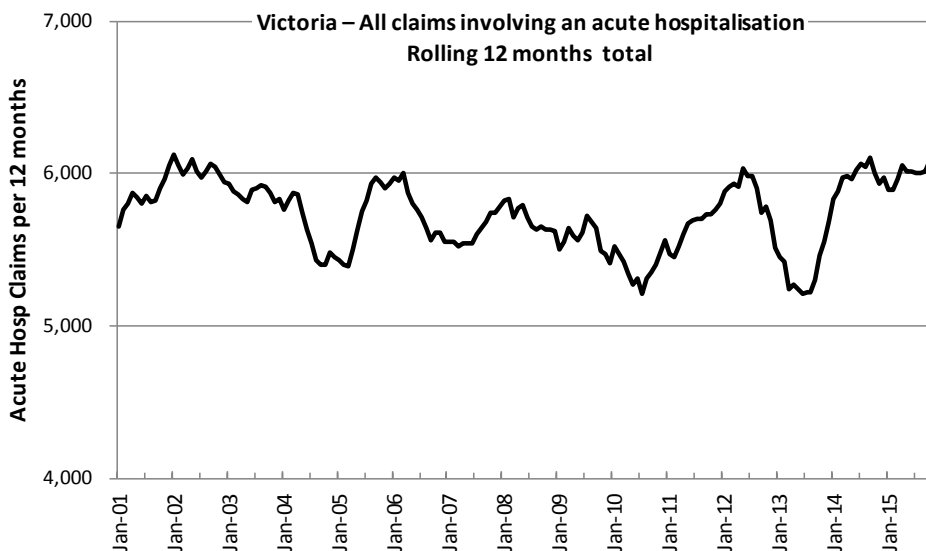
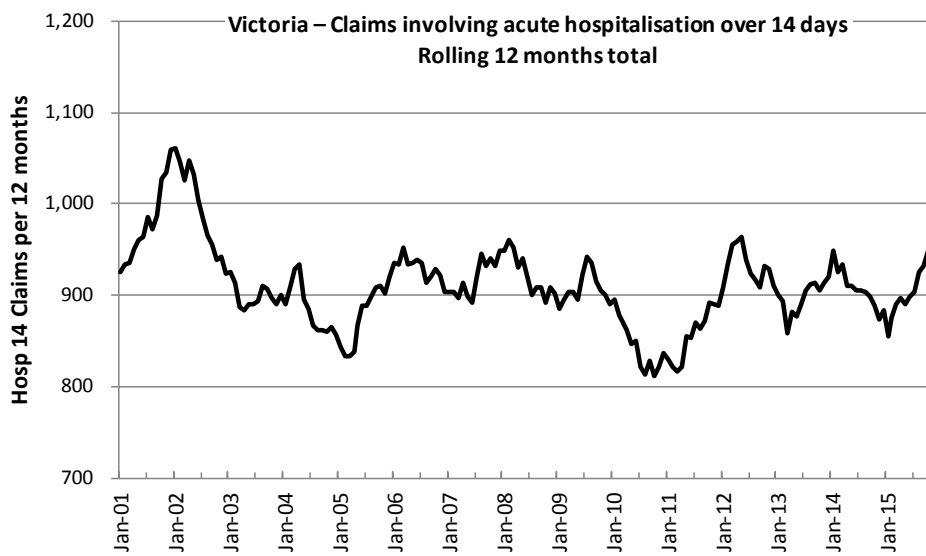


Victoria - Fatalities, rolling 12 months total

Claims involving an acute hospital admission*

(by claim acceptance date – rolling 12 month, to midnight 30 November 2015)

Category	2015	2014	2013	2015 v 2014		2015 v 2013		5 Year Av
Claims involving an acute hospitalisation over 14 days (Rolling 12 Month Total)								
Claims (to November)	964	874	913	+90	(+10%)	+51	(+6%)	914
per 100,000 pop	16.3	15.0	15.9	+1.3	(+9%)	+0.4	(+3%)	15.8
per 10,000 veh	2.1	1.9	2.1	+0.2	(+11%)	0.0	(+0%)	2.1
All claims involving an acute hospitalisation (Rolling 12 Month Total)								
Claims (to November)	6,162	5,934	5,548	+228	(+4%)	+614	(+11%)	5,817
per 100,000 pop	103.7	101.7	96.9	+2.0	(+2%)	+6.8	(+7%)	101.5
per 10,000 veh	13.4	13.1	12.6	+0.3	(+2%)	+0.8	(+6%)	13.2



*An acute hospital admission refers to a hospital admission that occurred within 7 days of accident.

Fatalities: 12 months to May 2016

Category	2016	2015	2014	2016 v 2015		2016 v 2014		5 Year Av
Overview								
Fatalities	270	249	252	+21	(+8%)	+18	(+7%)	261
Accidents	254	226	227	+28	(+12%)	+27	(+12%)	239
Sex								
Female	78	65	80	+13	(+20%)	-2	(-3%)	77
Male	191	184	172	+7	(+4%)	+19	(+11%)	184
Roaduser								
Bicyclist	11	8	8	+3	(+38%)	+3	(+38%)	8
Driver	126	122	118	4	(+3%)	+8	(+7%)	125
Motorcyclist	49	31	33	+18	(+58%)	+16	(+48%)	39
Passenger	50	48	52	+2	(+4%)	-2	(-4%)	49
Pedestrian	34	40	41	-6	(-15%)	-7	(-17%)	40
Location								
Melbourne	134	109	116	+25	(+23%)	+18	(+16%)	119
Rural Victoria	136	140	136	-4	(-3%)	0	(0%)	142
Agegroup								
0-4	3	4	1	-1	(-25%)	+2	(+200%)	3
5-15	5	3	9	+2	(+67%)	-4	(-44%)	7
16-17	14	9	3	+5	(+56%)	+11	(+367%)	7
18-20	26	21	15	+5	(+24%)	+11	(+73%)	24
21-25	16	29	26	-13	(-45%)	-10	(-38%)	27
26-29	21	23	18	-2	(-9%)	+3	(+17%)	20
30-39	34	31	36	+3	(+10%)	-2	(-6%)	36
40-49	40	31	30	+9	(+29%)	+10	(+33%)	32
50-59	33	27	33	+6	(+22%)	0	(0%)	31
60-69	30	27	25	+3	(+11%)	+5	(+20%)	29
70+	47	44	55	+3	(+7%)	-8	(-15%)	46
Alctime								
High (Melb)	68	62	59	+6	(+10%)	+9	(+15%)	62
High (Rural)	66	63	47	+3	(+5%)	+19	(+40%)	63
High (Vic)	134	125	106	+9	(+7%)	+28	(+26%)	125
Low (Melb)	66	47	57	+19	(+40%)	+9	(+16%)	57
Low (Rural)	70	77	89	-7	(-9%)	-19	(-21%)	79
Low (Vic)	136	124	146	+12	(+10%)	-10	(-7%)	136
Accident Type								
Intersection								
Adjacent direction	35	24	42	+11	(+46%)	-7	(-17%)	31
Opposing direction	10	9	5	+1	(+11%)	+5	(+100%)	6
Mid-block/other								
Head on	51	33	44	+18	(+55%)	+7	(+16%)	42
Same direction	21	11	12	+10	(+91%)	+9	(+75%)	14
Manoeuvre/o'taking	17	15	10	+2	(+13%)	+7	(+70%)	14
On path	6	6	5	0	(0%)	+1	(+20%)	6
Single vehicle	96	109	85	-13	(-12%)	+11	(+13%)	103
Other (incl peds)	34	42	49	-8	(-19%)	-15	(-31%)	45

Fatalities: 12 months to May 2016 – Continued

Category	2016	2015	2014	2016 v 2015		2016 v 2014		5 Year Av
Police Service Area (based on Local Government Area (see p.13))								
BALLARAT	8	4	85	+4	(+100%)	-77	(-91%)	5
BANYULE	2	1	49	+1	(+100%)	-47	(-96%)	2
BASS COAST	5	6	6	-1	(-17%)	-1	(-17%)	7
BAW BAW	2	3	3	-1	(-33%)	-1	(-33%)	4
BENALLA	7	14	10	-7	(-50%)	-3	(-30%)	9
BENDIGO	4	6	6	-2	(-33%)	-2	(-33%)	6
BOROONDARA	3	2	10	+1	(+50%)	-7	(-70%)	3
BRIMBANK	9	2	2	+7	(+350%)	+7	(+350%)	7
CAMPASPE	3	4	4	-1	(-25%)	-1	(-25%)	5
CARDINIA	10	5	7	+5	(+100%)	+3	(+43%)	7
CASEY	7	5	5	+2	(+40%)	+2	(+40%)	6
CENTRAL GOLDFIELDS	3	1	6	+2	(+200%)	-3	(-50%)	2
DAREBIN	4	1	7	+3	(+300%)	-3	(-43%)	3
EAST GIPPSLAND	9	6	5	+3	(+50%)	+4	(+80%)	6
FRANKSTON	3	5	3	-2	(-40%)	0	(0%)	2
GEELONG	4	7	2	-3	(-43%)	+2	(+100%)	8
GLEN EIRA	3	5	1	-2	(-40%)	+2	(+200%)	5
GREATER DANDENONG	7	5	3	+2	(+40%)	+4	(+133%)	5
HOBSONS BAY	6	1	5	+5	(+500%)	+1	(+20%)	2
HORSHAM	6	1	2	+5	(+500%)	+4	(+200%)	4
HUME	5	6	3	-1	(-17%)	+2	(+67%)	6
KINGSTON	4	2	2	+2	(+100%)	+2	(+100%)	5
KNOX	7	5	2	+2	(+40%)	+5	(+250%)	4
LA TROBE	7	4	6	+3	(+75%)	+1	(+17%)	6
MACEDON RANGES	8	8	5	0	(0%)	+3	(+60%)	6
MANNINGHAM	1	0	4	+1		-3	(-75%)	1
MARIBYRNONG	1	3	6	-2	(-67%)	-5	(-83%)	2
MAROONDAH	0	3	1	-3	(-100%)	-1	(-100%)	2
MELBOURNE	1	8	1	-7	(-88%)	0	(0%)	4
MELTON	4	6	0	-2	(-33%)	+4		6
MILDURA	4	2	3	+2	(+100%)	+1	(+33%)	3
MITCHELL	9	9	9	0	(0%)	0	(0%)	8
MONASH	3	2	6	+1	(+50%)	-3	(-50%)	3
MOONEE VALLEY	3	3	6	0	(0%)	-3	(-50%)	3
MOORABOOL	4	8	4	-4	(-50%)	0	(0%)	8
MORELAND	2	5	5	-3	(-60%)	-3	(-60%)	3
MORNINGTON PENINSULA	12	9	7	+3	(+33%)	+5	(+71%)	7
NILLUMBIK	4	3	3	+1	(+33%)	+1	(+33%)	2
NORTHERN GRAMPPIANS	5	2	7	+3	(+150%)	-2	(-29%)	5
PORT PHILLIP	2	0	0	+2		+2		2
SHEPPARTON	7	5	9	+2	(+40%)	-2	(-22%)	6
SOUTHERN GRAMPPIANS	4	10	5	-6	(-60%)	-1	(-20%)	5
STONNINGTON	2	4	3	-2	(-50%)	-1	(-33%)	3
SURF COAST	8	6	1	+2	(+33%)	+7	(+700%)	7
SWAN HILL	4	3	3	+1	(+33%)	+1	(+33%)	5
WANGARATTA	12	5	4	+7	(+140%)	+8	(+200%)	9
WARRNAMBOOL	6	14	9	-8	(-57%)	-3	(-33%)	8
WELLINGTON	3	2	8	+1	(+50%)	-5	(-63%)	4
WHITEHORSE	3	4	11	-1	(-25%)	-8	(-73%)	3
WHITTLESEA	6	4	7	+2	(+50%)	-1	(-14%)	5
WODONGA	3	9	3	-6	(-67%)	0	(0%)	5
WYNDHAM	7	6	5	+1	(+17%)	+2	(+40%)	6
YARRA	2	1	4	+1	(+100%)	-2	(-50%)	1
YARRA RANGES	12	4	3	+8	(+200%)	+9	(+300%)	8

Claims involving acute hospitalisation over 14 days: 12 months to November 2015 (claim acceptance date)

Category	2015	2014	2013	2015 v 2014		2015 v 2013		5 Year Av
Overview								
Claims	964	874	913	+90	(+10%)	+51	(+6%)	914
Sex								
Female	426	341	390	+85	(+25%)	+36	(+9%)	381
Male	538	530	522	+8	(+2%)	+16	(+3%)	532
Roaduser								
Driver	357	345	392	+12	(+3%)	-35	(-9%)	361
Passenger	139	136	148	+3	(+2%)	-9	(-6%)	144
Motorcyclist	181	166	130	+15	(+9%)	+51	(+39%)	160
Pedestrian	186	167	202	+19	(+11%)	-16	(-8%)	184
Cyclist	48	35	25	+13	(+37%)	+23	(+92%)	38
Train/Tram	8	10	3	-2	(-20%)	+5	(+167%)	7
Location								
Melbourne	637	535	586	+102	(+19%)	+51	(+9%)	588
Rural Victoria	302	317	321	-15	(-5%)	-19	(-6%)	314
Agegroup								
0-4	5	3	2	+2	(+67%)	+3	(+150%)	3
5-15	17	17	9	0	(0%)	+8	(+89%)	15
16-17	13	12	16	+1	(+8%)	-3	(-19%)	17
18-20	45	51	68	-6	(-12%)	-23	(-34%)	54
21-25	94	80	82	+14	(+18%)	+12	(+15%)	84
26-29	59	52	35	+7	(+13%)	+24	(+69%)	53
30-39	121	109	101	+12	(+11%)	+20	(+20%)	114
40-49	118	105	114	+13	(+12%)	+4	(+4%)	116
50-59	121	109	104	+12	(+11%)	+17	(+16%)	108
60-69	106	95	111	+11	(+12%)	-5	(-5%)	106
70+	265	240	270	+25	(+10%)	-5	(-2%)	245
Alctime								
High (Melb)	257	204	258	+53	(+26%)	-1	(-0%)	249
High (Rural)	119	124	118	-5	(-4%)	+1	(+1%)	124
High (Vic)	376	328	376	+48	(+15%)	0	(0%)	373
Low (Melb)	380	331	328	+49	(+15%)	+52	(+16%)	339
Low (Rural)	183	193	203	-10	(-5%)	-20	(-10%)	190
Low (Vic)	563	524	531	+39	(+7%)	+32	(+6%)	529
Accident Type								
Intersection								
Adjacent direction	101	95	133	+6	(+6%)	-32	(-24%)	114
Opposing direction	64	58	63	+6	(+10%)	+1	(+2%)	62
Mid-block/other								
Head on	96	86	75	+10	(+12%)	+21	(+28%)	85
Same direction	89	74	73	+15	(+20%)	+16	(+22%)	85
Manoeuvre/o'taking	61	52	61	+9	(+17%)	0	(0%)	57
On path	30	24	22	+6	(+25%)	+8	(+36%)	24
Single vehicle	288	272	236	+16	(+6%)	+52	(+22%)	260
Other (incl peds)	235	212	249	+23	(+11%)	-14	(-6%)	228

Note: Excludes rejected claims and claims for interstate crashes.

Claims involving acute hospitalisation over 14 days: 12 months to November 2015 (claim acceptance date) - Continued

Category	2015	2014	2013	2015 v 2013		2015 v 2014		5 Year Av
Police Service Area (based on Local Government Area (see p.13))								
BALLARAT	20	20	16	0	(0%)	+4	(+25%)	17
BANYULE	11	8	11	+3	(+38%)	0	(0%)	10
BASS COAST	18	20	14	-2	(-10%)	+4	(+29%)	17
BAW BAW	12	7	8	+5	(+71%)	+4	(+50%)	11
BENALLA	25	20	16	+5	(+25%)	+9	(+56%)	21
BENDIGO	16	9	19	+7	(+78%)	-3	(-16%)	15
BOROONDARA	21	27	17	-6	(-22%)	+4	(+24%)	22
BRIMBANK	34	25	17	+9	(+36%)	+17	(+100%)	26
CAMPASPE	8	5	9	+3	(+60%)	-1	(-11%)	7
CARDINIA	18	11	12	+7	(+64%)	+6	(+50%)	15
CASEY	35	23	30	+12	(+52%)	+5	(+17%)	28
CENTRAL GOLDFIELDS	4	6	6	-2	(-33%)	-2	(-33%)	6
DAREBIN	13	17	16	-4	(-24%)	-3	(-19%)	16
EAST GIPPSLAND	9	10	6	-1	(-10%)	+3	(+50%)	11
FRANKSTON	16	12	16	+4	(+33%)	0	(0%)	15
GEELONG	21	31	35	-10	(-32%)	-14	(-40%)	29
GLEN EIRA	23	24	35	-1	(-4%)	-12	(-34%)	28
GREATER DANDENONG	15	28	31	-13	(-46%)	-16	(-52%)	26
HOBSONS BAY	11	9	10	+2	(+22%)	+1	(+10%)	10
HORSHAM	5	7	5	-2	(-29%)	0	(0%)	7
HUME	35	18	28	+17	(+94%)	+7	(+25%)	27
KINGSTON	25	22	26	+3	(+14%)	-1	(-4%)	22
KNOX	19	12	19	+7	(+58%)	0	(0%)	17
LA TROBE	15	10	12	+5	(+50%)	+3	(+25%)	15
MACEDON RANGES	16	25	20	-9	(-36%)	-4	(-20%)	17
MANNINGHAM	11	10	16	+1	(+10%)	-5	(-31%)	14
MARIBYRNONG	12	5	10	+7	(+140%)	+2	(+20%)	11
MAROONDAH	6	3	7	+3	(+100%)	-1	(-14%)	8
MELBOURNE	30	32	31	-2	(-6%)	-1	(-3%)	31
MELTON	20	10	11	+10	(+100%)	+9	(+82%)	15
MILDURA	4	9	7	-5	(-56%)	-3	(-43%)	8
MITCHELL	15	20	20	-5	(-25%)	-5	(-25%)	18
MONASH	29	18	23	+11	(+61%)	+6	(+26%)	23
MOONEE VALLEY	17	23	16	-6	(-26%)	+1	(+6%)	18
MOORABOOL	20	19	16	+1	(+5%)	+4	(+25%)	16
MORELAND	28	25	34	+3	(+12%)	-6	(-18%)	27
MORNINGTON PENINSULA	27	26	26	+1	(+4%)	+1	(+4%)	28
NILLUMBIK	12	4	6	+8	(+200%)	+6	(+100%)	7
NORTHERN GRAMPIANS	11	11	14	0	(0%)	-3	(-21%)	9
PORT PHILLIP	17	21	12	-4	(-19%)	+5	(+42%)	15
SHEPPARTON	14	9	12	+5	(+56%)	+2	(+17%)	12
SOUTHERN GRAMPIANS	8	11	8	-3	(-27%)	0	(0%)	9
STONNINGTON	20	15	11	+5	(+33%)	+9	(+82%)	17
SURF COAST	16	11	14	+5	(+45%)	+2	(+14%)	13
SWAN HILL	11	10	6	+1	(+10%)	+5	(+83%)	8
WANGARATTA	12	15	18	-3	(-20%)	-6	(-33%)	16
WARRNAMBOOL	8	9	20	-1	(-11%)	-12	(-60%)	13
WELLINGTON	5	12	9	-7	(-58%)	-4	(-44%)	9
WHITEHORSE	18	18	17	0	(0%)	+1	(+6%)	19
WHITTLESEA	30	17	26	+13	(+76%)	+4	(+15%)	23
WODONGA	9	11	11	-2	(-18%)	-2	(-18%)	10
WYNDHAM	24	28	23	-4	(-14%)	+1	(+4%)	23
YARRA	14	13	15	+1	(+8%)	-1	(-7%)	13
YARRA RANGES	46	31	34	+15	(+48%)	+12	(+35%)	33

Note: excludes rejected claims and claims for interstate crashes

Claims involving an acute hospital admission: 12 months to November 2015 (claim acceptance date)

Category	2015	2014	2013	2015 v 2014	2015 v 2013	5 Year Av		
Overview								
Claims	6,162	5,934	5,548	+228	(+4%)	+614	(+11%)	5,817
Sex								
Female	2,690	2,508	2,264	+182	(+7%)	+426	(+19%)	2,471
Male	3,460	3,418	3,280	+42	(+1%)	+180	(+5%)	3,343
Roaduser								
Driver	2,833	2,626	2,524	+207	(+8%)	+309	(+12%)	2,663
Passenger	1,014	1,043	916	-29	(-3%)	+98	(+11%)	1,004
Motorcyclist	1,066	1,134	978	-68	(-6%)	+88	(+9%)	1,000
Pedestrian	619	607	647	+12	(+2%)	-28	(-4%)	637
Cyclist	385	383	380	+2	(+1%)	+5	(+1%)	372
Train/Tram	27	33	28	-6	(-18%)	-1	(-4%)	28
Location								
Melbourne	4,123	4,004	3,757	+119	(+3%)	+366	(+10%)	3,915
Rural Victoria	1,812	1,722	1,741	+90	(+5%)	+71	(+4%)	1,796
Agegroup								
0-4	41	51	49	-10	(-20%)	-8	(-16%)	48
5-15	230	191	161	+39	(+20%)	+69	(+43%)	195
16-17	111	104	93	+7	(+7%)	+18	(+19%)	109
18-20	451	495	488	-44	(-9%)	-37	(-8%)	500
21-25	742	758	693	-16	(-2%)	+49	(+7%)	727
26-29	520	469	409	+51	(+11%)	+111	(+27%)	451
30-39	988	897	820	+91	(+10%)	+168	(+20%)	901
40-49	859	914	835	-55	(-6%)	+24	(+3%)	864
50-59	794	750	682	+44	(+6%)	+112	(+16%)	729
60-69	575	536	514	+39	(+7%)	+61	(+12%)	529
70+	851	768	803	+83	(+11%)	+48	(+6%)	766
Altime								
High (Melb)	1,692	1,702	1,596	-10	(-1%)	+96	(+6%)	2,209
High (Rural)	701	705	684	-4	(-1%)	+17	(+2%)	1,055
High (Vic)	2,393	2,407	2,280	-14	(-1%)	+113	(+5%)	3,264
Low (Melb)	2,411	2,337	2,101	+74	(+3%)	+310	(+15%)	765
Low (Rural)	1,074	1,046	1,045	+28	(+3%)	+29	(+3%)	528
Low (Vic)	3,485	3,383	3,146	+102	(+3%)	+339	(+11%)	1,292
Accident Type								
Intersection								
Adjacent direction	761	771	845	-10	(-1%)	-84	(-10%)	817
Opposing direction	525	506	487	+19	(+4%)	+38	(+8%)	495
Mid-block/other								
Head on	298	342	282	-44	(-13%)	+16	(+6%)	319
Same direction	940	866	782	+74	(+9%)	+158	(+20%)	887
Manoeuvre/o'taking	383	309	324	+74	(+24%)	+59	(+18%)	329
On path	289	269	250	+20	(+7%)	+39	(+16%)	246
Single vehicle	1,704	1,701	1,497	+3	(+0%)	+207	(+14%)	1,613
Other (incl peds)	1,262	1,169	1,080	+93	(+8%)	+182	(+17%)	1,112

Note: excludes rejected claims and claims for interstate crashes

Claims involving an acute hospital admission: 12 months to November 2015 (claim acceptance date) – Continued

Category	2015	2014	2013	2015 v 2014		2015 v 2013		5 Year Av
Police Service Area (based on Local Government Area (see p.13))								
BALLARAT	91	78	90	+13	(+17%)	+1	(+1%)	88
BANYULE	35	69	53	-34	(-49%)	-18	(-34%)	54
BASS COAST	76	78	81	-2	(-3%)	-5	(-6%)	77
BAW BAW	42	65	48	-23	(-35%)	-6	(-13%)	54
BENALLA	100	88	111	+12	(+14%)	-11	(-10%)	103
BENDIGO	113	69	81	+44	(+64%)	+32	(+40%)	95
BOROONDARA	124	128	139	-4	(-3%)	-15	(-11%)	124
BRIMBANK	121	134	123	-13	(-10%)	-2	(-2%)	139
CAMPASPE	35	33	31	+2	(+6%)	+4	(+13%)	34
CARDINIA	105	114	87	-9	(-8%)	+18	(+21%)	95
CASEY	278	218	224	+60	(+28%)	+54	(+24%)	231
CENTRAL GOLDFIELDS	19	35	21	-16	(-46%)	-2	(-10%)	24
DAREBIN	79	91	90	-12	(-13%)	-11	(-12%)	87
EAST GIPPSLAND	48	51	54	-3	(-6%)	-6	(-11%)	58
FRANKSTON	124	106	103	+18	(+17%)	+21	(+20%)	116
GEELONG	217	203	200	+14	(+7%)	+17	(+9%)	210
GLEN EIRA	168	171	175	-3	(-2%)	-7	(-4%)	162
GREATER DANDENONG	220	251	220	-31	(-12%)	0	(0%)	212
HOBSONS BAY	59	60	56	-1	(-2%)	+3	(+5%)	58
HORSHAM	46	28	28	+18	(+64%)	+18	(+64%)	35
HUME	188	169	137	+19	(+11%)	+51	(+37%)	151
KINGSTON	120	148	117	-28	(-19%)	+3	(+3%)	125
KNOX	103	111	79	-8	(-7%)	+24	(+30%)	101
LA TROBE	53	51	72	+2	(+4%)	-19	(-26%)	61
MACEDON RANGES	87	84	101	+3	(+4%)	-14	(-14%)	82
MANNINGHAM	90	46	67	+44	(+96%)	+23	(+34%)	67
MARIBY RNONG	65	56	78	+9	(+16%)	-13	(-17%)	73
MAROONDAH	59	44	54	+15	(+34%)	+5	(+9%)	56
MELBOURNE	228	222	238	+6	(+3%)	-10	(-4%)	226
MELTON	91	51	71	+40	(+78%)	+20	(+28%)	71
MILDURA	29	30	39	-1	(-3%)	-10	(-26%)	34
MITCHELL	93	90	83	+3	(+3%)	+10	(+12%)	85
MONASH	172	185	181	-13	(-7%)	-9	(-5%)	167
MOONEE VALLEY	108	114	101	-6	(-5%)	+7	(+7%)	106
MOORABOOL	92	92	117	0	(0%)	-25	(-21%)	96
MORELAND	133	140	139	-7	(-5%)	-6	(-4%)	136
MORNINGTON PENINSUL	143	138	109	+5	(+4%)	+34	(+31%)	142
NILLUMBIK	46	27	31	+19	(+70%)	+15	(+48%)	37
NORTHERN GRAMPIANS	46	44	38	+2	(+5%)	+8	(+21%)	39
PORT PHILLIP	132	138	108	-6	(-4%)	+24	(+22%)	119
SHEPPARTON	82	59	52	+23	(+39%)	+30	(+58%)	64
SOUTHERN GRAMPIANS	42	44	43	-2	(-5%)	-1	(-2%)	43
STONNINGTON	123	138	118	-15	(-11%)	+5	(+4%)	120
SURF COAST	82	60	61	+22	(+37%)	+21	(+34%)	67
SWAN HILL	33	44	26	-11	(-25%)	+7	(+27%)	35
WANGARATTA	87	83	94	+4	(+5%)	-7	(-7%)	89
WARRNAMBOOL	50	57	72	-7	(-12%)	-22	(-31%)	69
WELLINGTON	61	80	56	-19	(-24%)	+5	(+9%)	69
WHITEHORSE	93	88	101	+5	(+6%)	-8	(-8%)	98
WHITTLESEA	124	119	144	+5	(+4%)	-20	(-14%)	125
WODONGA	52	50	56	+2	(+4%)	-4	(-7%)	58
WYNDHAM	146	161	134	-15	(-9%)	+12	(+9%)	143
YARRA	106	105	97	+1	(+1%)	+9	(+9%)	99
YARRA RANGES	177	152	151	+25	(+16%)	+26	(+17%)	161

Note: excludes rejected claims and claims for interstate crashes

Fatalities: Victorian monthly totals since 1951

Year	Jan	Feb	Mar	Apr	May	Jun	Jul	Aug	Sep	Oct	Nov	Dec	Totals
1951							61	59	52	38	29	41	
1952	45	40	54	61	54	69	67	55	44	44	31	20	584
1953	23	28	54	58	49	42	50	37	44	27	36	32	480
1954	44	42	28	60	55	36	63	33	25	52	30	41	509
1955	44	36	45	55	48	56	64	44	44	32	40	40	548
1956	34	48	51	67	53	65	71	47	39	39	44	48	606
1957	50	41	46	58	52	54	57	53	51	46	32	49	589
1958	50	38	42	58	54	41	54	53	57	40	57	52	596
1959	50	57	61	50	75	55	42	48	52	55	63	63	671
1960	49	53	57	76	70	70	67	62	61	77	52	66	760
1961	63	57	68	74	58	68	78	82	59	62	60	65	794
1962	65	41	76	78	72	80	70	77	62	53	64	70	808
1963	67	56	65	85	66	68	77	55	55	58	61	67	780
1964	73	71	78	71	83	89	80	89	67	66	62	75	904
1965	63	64	86	88	80	87	79	69	81	77	68	87	929
1966	75	59	75	103	74	86	87	80	75	66	90	85	955
1967	61	79	91	97	81	71	59	67	70	68	60	83	887
1968	70	78	86	78	73	76	73	77	72	80	81	105	949
1969	79	68	79	87	86	77	87	83	87	83	94	101	1,011
1970	85	84	106	80	87	88	110	106	78	95	68	74	1,061
1971	83	75	77	68	76	86	85	72	78	73	74	76	923
1972	61	62	75	82	75	71	98	85	83	62	80	81	915
1973	75	75	95	85	64	66	61	85	89	88	66	86	935
1974	56	62	81	60	70	73	67	62	53	70	80	72	806
1975	67	65	87	73	97	94	57	75	69	66	71	89	910
1976	79	78	88	78	69	79	60	70	82	78	77	100	938
1977	65	71	89	79	65	79	70	91	68	74	96	107	954
1978	75	54	95	63	64	69	68	77	65	84	83	72	869
1979	63	60	86	75	45	64	66	75	69	79	72	93	847
1980	48	55	66	59	47	56	60	53	45	58	61	49	657
1981	69	60	58	61	74	65	61	63	68	71	59	57	766
1982	55	53	59	59	67	45	47	71	53	69	65	66	709
1983	42	59	53	63	62	61	65	51	59	43	54	52	664
1984	65	48	58	50	56	48	46	50	71	53	55	58	658
1985	56	47	50	65	75	50	51	50	58	61	56	64	683
1986	56	50	70	69	59	53	42	54	54	52	59	51	669
1987	62	43	57	52	63	59	62	49	62	61	55	80	705
1988	49	58	69	54	79	50	54	52	64	59	43	70	701
1989	76	65	80	59	67	73	52	65	82	50	41	66	776
1990	48	44	55	39	56	64	41	34	48	35	40	44	548
1991	45	39	70	30	34	29	44	47	41	36	35	53	503
1992	34	33	34	47	33	29	23	27	28	38	30	40	396
1993	27	40	37	39	44	33	33	27	34	39	43	40	436
1994	36	31	44	35	27	33	29	37	17	27	32	30	378
1995	38	35	26	33	34	41	27	34	34	32	38	46	418
1996	40	47	35	38	28	29	30	35	49	24	33	30	418
1997	36	25	30	30	40	22	39	26	26	29	39	35	377
1998	29	29	32	36	31	22	40	19	37	36	49	30	390
1999	32	31	35	35	34	24	35	26	28	38	29	37	384
2000	32	26	46	32	39	32	33	29	36	29	44	29	407
2001	44	30	31	32	31	41	34	37	35	51	41	37	444
2002	32	31	45	31	45	32	27	25	31	30	31	37	397
2003	21	41	36	28	31	28	20	23	23	24	24	31	330
2004	32	22	30	30	46	28	27	26	22	28	25	27	343
2005	33	27	47	21	29	23	30	25	25	33	17	36	346
2006	24	37	23	23	27	23	25	22	43	20	31	39	337
2007	23	23	32	25	26	28	28	20	23	37	26	41	332
2008	28	20	37	25	25	20	27	27	18	25	26	25	303
2009	31	18	23	32	19	30	19	21	14	28	21	34	290
2010	26	25	23	20	31	26	26	18	17	36	12	28	288
2011	18	20	34	31	30	24	25	14	12	22	30	27	287
2012	30	20	25	19	23	22	17	25	17	34	26	24	282
2013	14	24	24	19	18	13	24	20	19	15	23	30	243
2014	25	21	25	14	23	17	22	21	20	19	28	13	248
2015	24	20	22	22	21	22	18	26	14	27	19	17	252
2016	21	34	26	18	27								
Ave	48	46	55	53	52	51	51	49	49	49	49	54	608
Max	85	84	106	103	97	94	110	106	89	95	96	107	1,061
Min	14	18	22	14	18	13	17	14	12	15	12	13	243

Fatalities by Week (2009 to 2016)

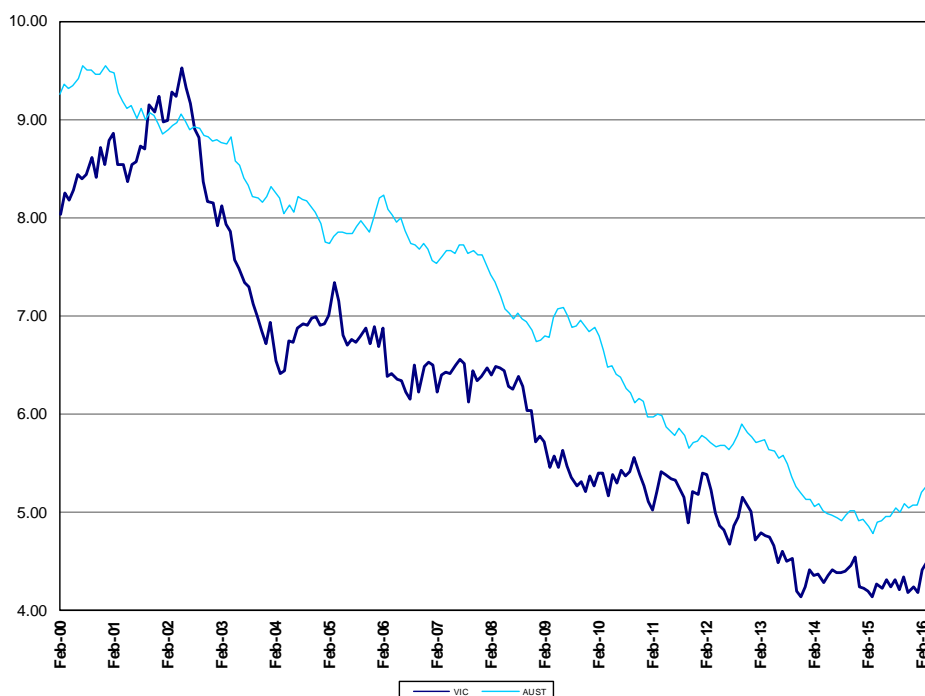
Week Ending	2009	2010	2011	2012	2013	2014	2015	2016	Cumulative 2016	% Change 2016-2015
5-Jan	7	3	2	3	1	0	2	7	2	-
12-Jan	10	5	6	7	3	5	5	10	17	+143%
19-Jan	4	6	3	8	6	7	6	4	21	+62%
26-Jan	4	5	4	9	4	9	2	4	25	+19%
2-Feb	6	9	6	5	3	6	10	6	31	+15%
9-Feb	6	7	5	3	8	4	6	6	37	+19%
16-Feb	7	4	6	7	6	8	4	7	44	+13%
23-Feb	4	8	3	6	6	2	6	4	48	+17%
2-Mar	1	7	3	2	2	6	4	1	49	+4%
9-Mar	3	2	10	3	4	8	8	3	52	-5%
16-Mar	6	8	6	11	6	4	6	6	58	-2%
23-Mar	6	3	9	5	10	4	2	6	64	+2%
30-Mar	8	7	9	6	2	6	3	8	72	+4%
6-Apr	5	4	6	7	4	6	3	5	77	+3%
13-Apr	5	5	9	2	6	6	6	5	82	+12%
20-Apr	11	7	7	6	4	2	8	11	93	+15%
27-Apr	9	1	6	3	5	2	5	9	102	+20%
4-May	6	6	6	10	6	3	4	6	108	+23%
11-May	7	8	6	2	3	4	6	7	115	+20%
18-May	1	4	7	4	1	3	4	1	116	+16%
25-May	2	11	10	6	2	5	4	2	118	+18%
1-Jun	6	5	5	2	9	9	5			
8-Jun	4	7	4	8	2	2	5			
15-Jun	9	4	6	3	3	2	4			
22-Jun	7	8	7	8	5	3	4			
29-Jun	9	7	6	3	1	8	5			
6-Jul	3	7	4	2	5	6	10			
13-Jul	6	2	8	5	7	7	2			
20-Jul	4	3	6	5	4	3	2			
27-Jul	5	8	6	5	5	4	3			
3-Aug	4	10	3	1	8	4	6			
10-Aug	7	3	5	5	1	5	4			
17-Aug	6	5	3	5	3	6	9			
24-Aug	3	5	2	6	6	4	7			
31-Aug	3	1	3	8	5	5	3			
7-Sep	2	5	1	5	5	4	4			
14-Sep	4	1	4	6	2	6	3			
21-Sep	4	4	1	3	3	4	2			
28-Sep	3	5	5	3	8	3	6			
5-Oct	2	9	4	7	3	4	4			
12-Oct	6	10	5	8	2	8	6			
19-Oct	8	5	3	9	3	0	6			
26-Oct	8	7	3	6	3	8	8			
2-Nov	5	8	8	6	6	2	5			
9-Nov	3	1	6	7	8	3	5			
16-Nov	9	2	12	6	2	8	4			
23-Nov	6	3	9	5	8	3	2			
30-Nov	4	5	2	9	4	13	5			
7-Dec	5	4	10	7	6	5	8			
14-Dec	8	8	3	4	10	2	5			
21-Dec	11	6	7	1	9	3	2			
28-Dec	6	8	6	8	4	3	5			
31-Dec	2	2	1	1	1	1	1			
Total	290	288	287	282	243	248	254	118		

The National Picture

State	Fatalities (12 months to May)					2016 v 2015	
	2016	2015	2014	2013			
NSW	383	304	344	343	+79	(+26%)	
VIC	270	249	252	264	+21	(+8%)	
QLD	243	235	227	297	+8	(+3%)	
SA	104	108	95	93	-4	(-4%)	
WA	172	184	154	184	-12	(-7%)	
TAS	41	34	39	34	+7	(+21%)	
NT	51	36	43	48	+15	(+42%)	
ACT	14	10	7	13	+4	(+40%)	
AUST TOTAL	1,278	1,160	1,161	1,276	+118	(+10%)	
AUST minus VIC	1,008	911	909	1,012	+97	(+11%)	

State	Fatalities per 10,000 registered vehicles (12 months to May)			Fatalities per 100,000 population (12 months to May)		
	2016	2015	2014	2016	2015	2014
NSW	0.71	0.58	0.68	5.00	4.02	4.62
VIC	0.58	0.55	0.56	4.52	4.23	4.36
QLD	0.64	0.62	0.62	5.06	4.95	4.85
SA	0.76	0.80	0.72	6.10	6.39	5.66
WA	0.77	0.84	0.72	6.62	7.13	6.06
TAS	0.90	0.76	0.88	7.92	6.60	7.59
NT	3.24	2.33	2.84	20.87	14.70	17.78
ACT	0.49	0.35	0.25	3.56	2.58	1.82
AUST TOTAL	0.70	0.65	0.66	5.35	4.91	4.99
AUST minus VIC	0.74	0.68	0.69	5.64	5.11	5.18

Deaths per 100,000 population, Victoria v Australia 2000 - 2016



Victoria v Australia - 12 Month Moving Fatality Rate

Booze-Bus Random Breath Testing

12 months to March 2016 (monthly totals)

	2015									2016		
	Apr	May	Jun	Jul	Aug	Sep	Oct	Nov	Dec	Jan	Feb	Mar
Melbourne	74,387	70,603	63,988	64,557	78,225	79,794	87,587	90,741	97,335	94,950	84,870	74,906
Country	3,095	7,283	10,186	2,833	3,734	4,598	6,184	7,167	4,673	7,818	4,079	8,676
Vic Total	77,482	77,886	74,174	67,390	81,959	84,392	93,771	97,908	102,008	102,768	88,949	83,582

12 months to March 2016 vs previous 12 months

	2016	2015	2014	2016 v 2015	2016 v 2014
Melbourne	961,943	1,172,395	1,060,175	-210452 (-18%)	-98232 (-9%)
Country	70,326	99,088	90,264	-28762 (-29%)	-19938 (-22%)
Vic Total	1,032,269	1,271,483	1,150,439	-239214 (-19%)	-118170 (-10%)

Mobile Safety Camera Data

Speed Infringements Issued from Mobile Cameras (monthly totals)

Monthly Average = 32,484

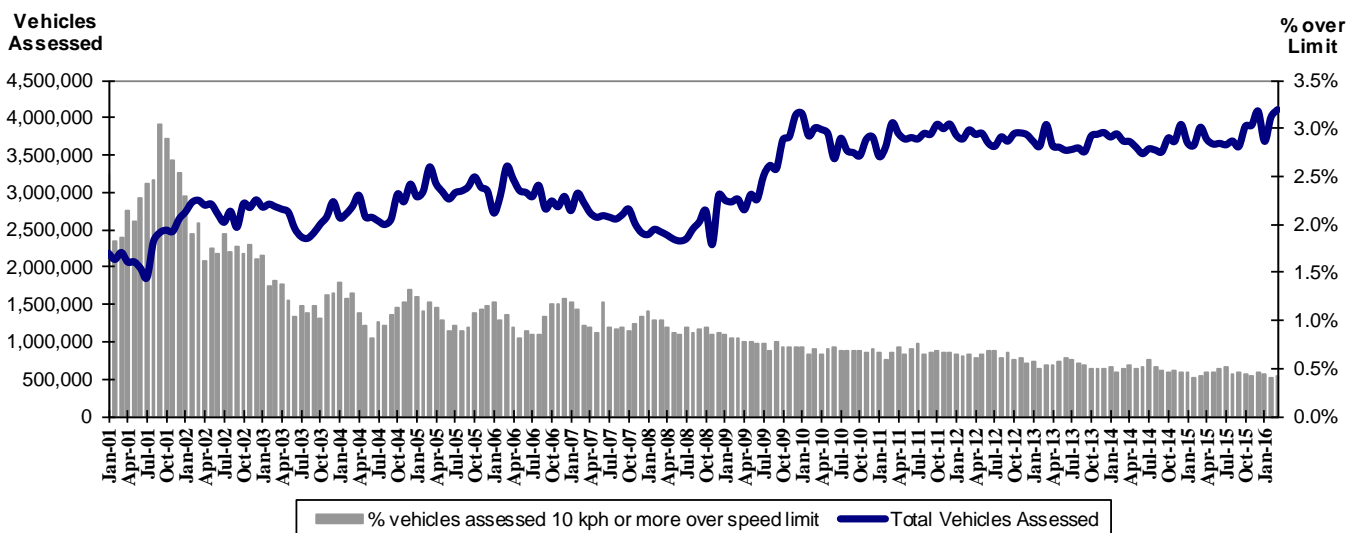
2015	2016											
	Apr	May	Jun	Jul	Aug	Sep	Oct	Nov	Dec	Jan	Feb	Mar
	33,790	30,434	33,386	36,437	31,001	29,975	34,436	29,747	35,684	32,312	31,573	31,038

Excessive Speed Infringements (ESI) Issued from Mobile Cameras (monthly totals)

Monthly Average = 317

2015	2016											
	Apr	May	Jun	Jul	Aug	Sep	Oct	Nov	Dec	Jan	Feb	Mar
	335	258	342	338	312	283	352	243	366	274	353	348

Notes: An ESI is defined as 25km/h over the speed limit except in a 110km/h zone where it is 20km/h over the limit.



Mobile Safety Cameras – Vehicles assessed and percentage of vehicles assessed 10km/h or more over speed limit per month

Explanations and References

Hi-AlcTime is those times of the day and week (*shaded* in the table below) when casualty crashes are ten times more likely to involve alcohol than casualty crashes at other (Lo-AlcTime) times.

	12am - 6am	6am - 8am	8am - 10am	10am - 2pm	2pm - 4pm	4pm - 6pm	6pm - 12pm
Monday							
Tuesday							
Wednesday							
Thursday							
Friday							
Saturday							
Sunday							

Police Service Areas align with Local Government Areas. Most Police Service Areas are equivalent to a single Local Government Area, while the remainder comprise two or three Local Government Areas.

Police Service Area	Local Government Area(s)	Police Service Area	Local Government Area(s)
BALLARAT	BALLARAT, PYRENEES	MAROONDAH	MAROONDAH
BANYULE	BANYULE	MELBOURNE	MELBOURNE
BASS COAST	BASS COAST, SOUTH GIPPSLAND	MELTON	MELTON
BAW BAW	BAWBAW	MILDURA	MILDURA
BENALLA	BENALLA, MANSFIELD, MURRINDINDI	MITCHELL	MITCHELL, STRATHBOGIE
BENDIGO	GREATER BENDIGO	MONASH	MONASH
BOROONDARA	BOROONDARA	MOONEE VALLEY	MOONEE VALLEY
BRIMBANK	BRIMBANK	MOORABOOL	GOLDEN PLAINS, HEPBURN, MOORABOOL
CAMPASPE	CAMPASPE	MORELAND	MORELAND
CARDINIA	CARDINIA	MORNINGTON PENINSULA	MORNINGTON PENINSULA
CASEY	CASEY	NILLUMBIK	NILLUMBIK
CENTRAL GOLDFIELDS	CENTRAL GOLDFIELDS, LODDON	NORTHERN GRAMPIANS	ARARAT, NORTHERN GRAMPIANS, YARRIAMBICK
GREATER DANDENONG	GREATER DANDENONG	PORT PHILLIP	PORT PHILLIP
DAREBIN	DAREBIN	SHEPPARTON	GREATER SHEPPARTON
EAST GIPPSLAND	EAST GIPPSLAND	SOUTHERN GRAMPIANS	GLENELG, SOUTHERN GRAMPIANS
FRANKSTON	FRANKSTON	STONNINGTON	STONNINGTON
GEELONG	GREATER GEELONG, QUEENSCLIFF	SURFCOAST	SURFCOAST, COLAC OTWAY
GLENEIRA	GLENEIRA, BAYSIDE	SWANHILL	BULOKE, GANNAWARRA, SWAN HILL
HOBSONS BAY	HOBSONSBAY	WANGARATTA	ALPINE, MOIRA, WANGARATTA
HORSHAM	HINDMARSH, HORSHAM, WESTWIMMERA	WARRNAMBOOL	CORANGAMITE, MOYNE, WARRNAMBOOL
HUME	HUME	WELLINGTON	WELLINGTON
KINGSTON	KINGSTON	WHITEHORSE	WHITEHORSE
KNOX	KNOX	WHITTLESEA	WHITTLESEA
LATROBE	LATROBE	WODONGA	INDIGO, TOWONG, WODONGA
MACEDON RANGES	MOUNT ALEXANDER, MACEDON RANGES	WYNDHAM	WYNDHAM
MANNINGHAM	MANNINGHAM	YARRA	YARRA
MARIBYRNONG	MARIBYRNONG	YARRA RANGES	YARRA RANGES

Useful Internet Sites

TAC Sites

- TAC Safety (Road Safety) www.tacsafety.com.au
- TAC How safe is your car www.howsafeisyourcar.com.au
- TAC Learners Log www.learnerslog.com.au
- TAC Motorcycle Safety Website www.spokes.com.au
- TAC Corporate site www.tac.vic.gov.au

Victorian Sites:

- VicRoads www.vicroads.vic.gov.au
- Victoria Police www.police.vic.gov.au
- Parliamentary Road Safety Committee www.parliament.vic.gov.au/rsc/
- ARRB Transport Research www.arrb.com.au
- RACV www.racv.com.au
- Monash University Accident Research Centre www.monash.edu.au/muarc
- Roadsafe www.roadsafe.org.au
- Cameras Save Lives www.camerassavelives.vic.gov.au

National and Interstate Sites:

- Australian Transport Safety Bureau www.atsb.gov.au
- Roads and Traffic Authority (NSW) www.rta.nsw.gov.au
- Queensland Transport - Road Safety transport.qld.gov.au/Home/Safety/Road
- Department of Transport (SA) www.transport.sa.gov.au/index.htm
- Main Roads Western Australia - Road Safety www.mrwa.wa.gov.au

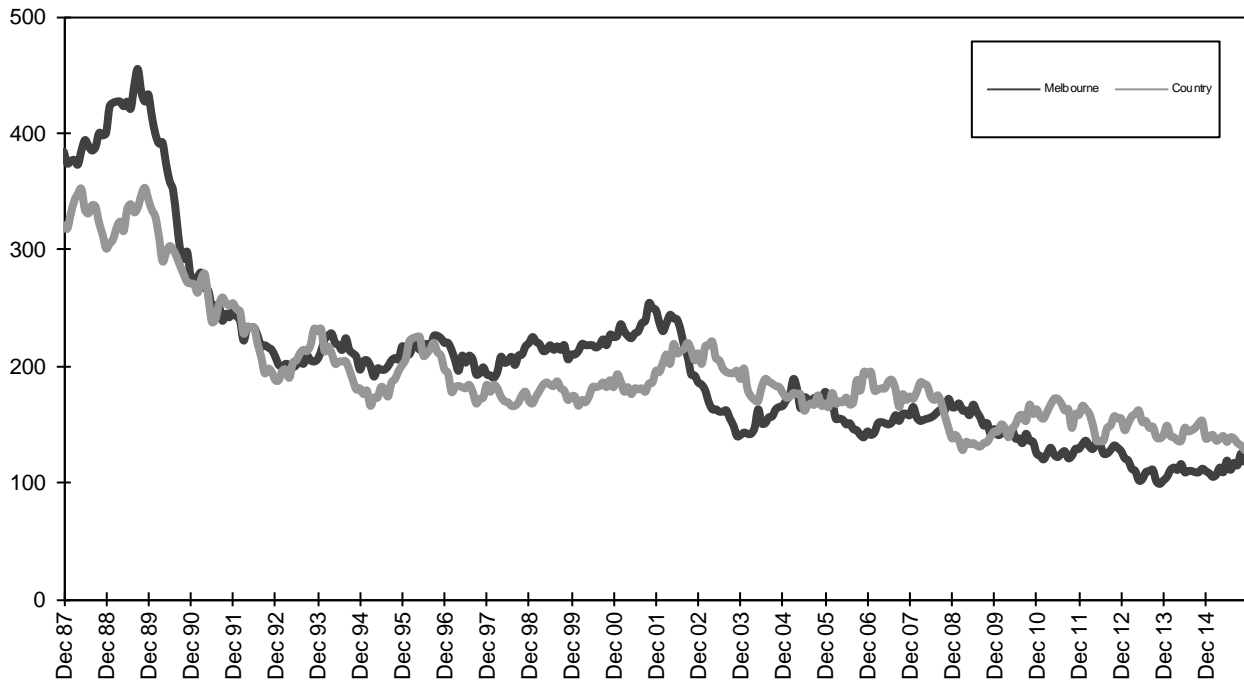
International Sites:

- National Highway Traffic Safety Admin (USA) www.nhtsa.dot.gov
- Swedish Road and Transport Institute (VTI) www.vti.se
- SWOV Institute for Road Safety Research www.swov.nl

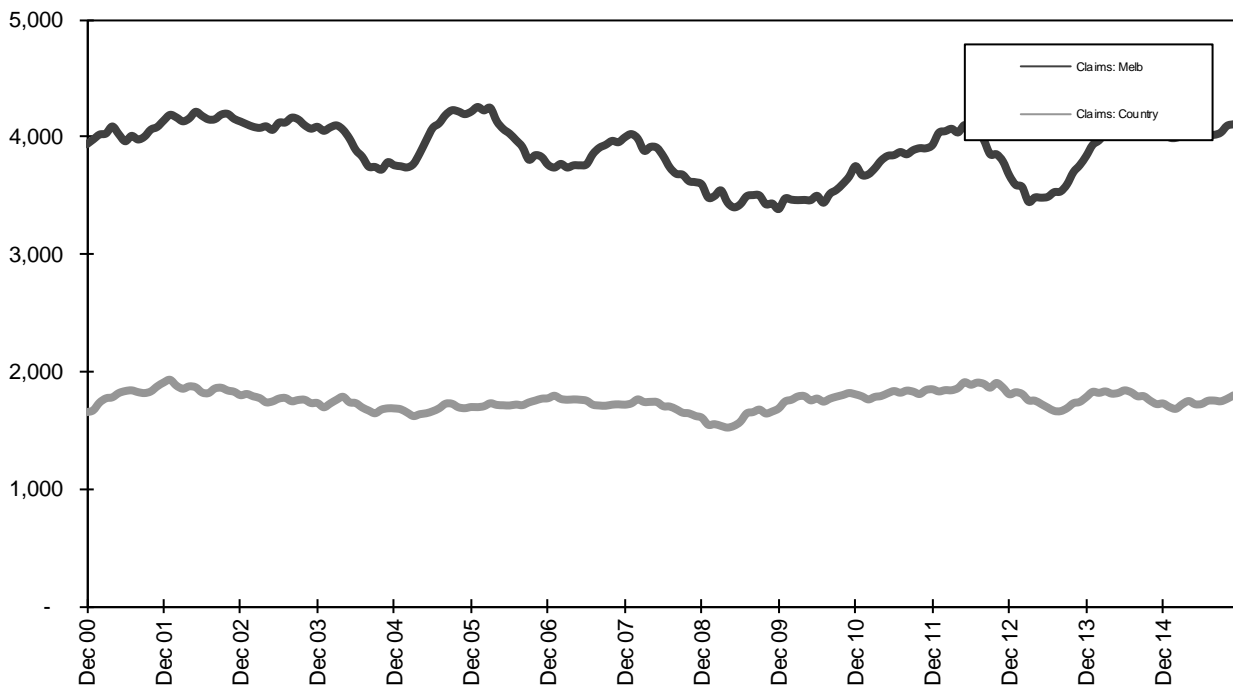
Related Sites:

- Australian Drug Foundation www.adf.org.au
- Amy Gillett Foundation www.amygillett.org.au

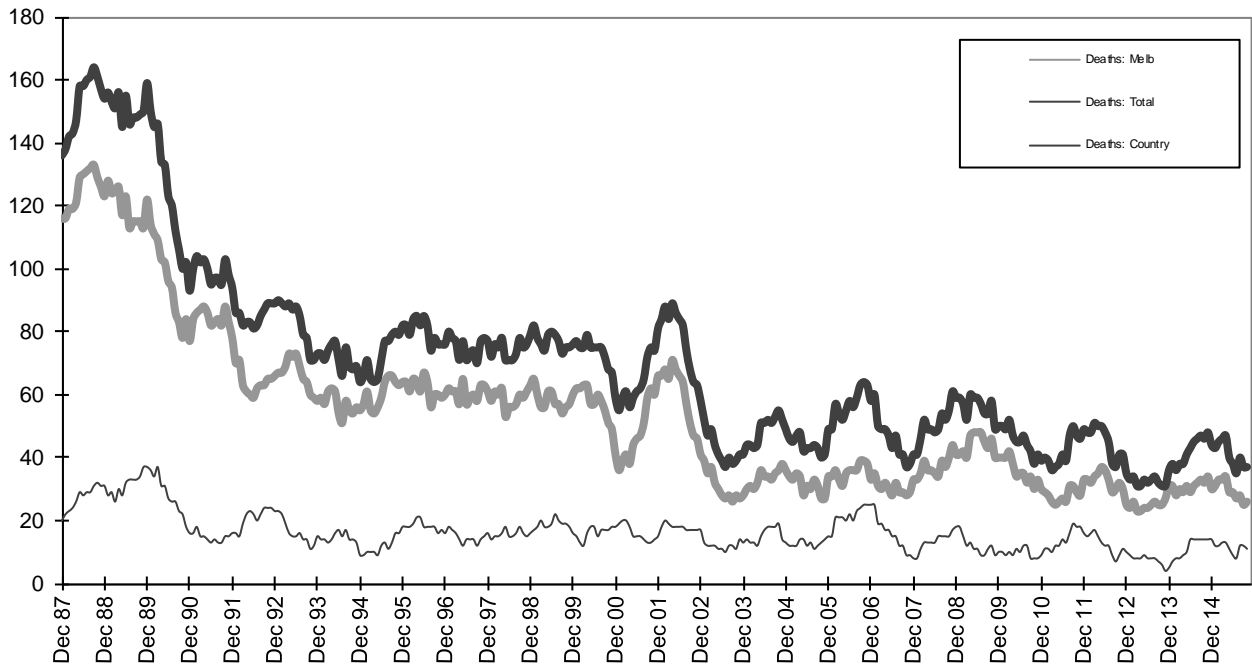
Figures



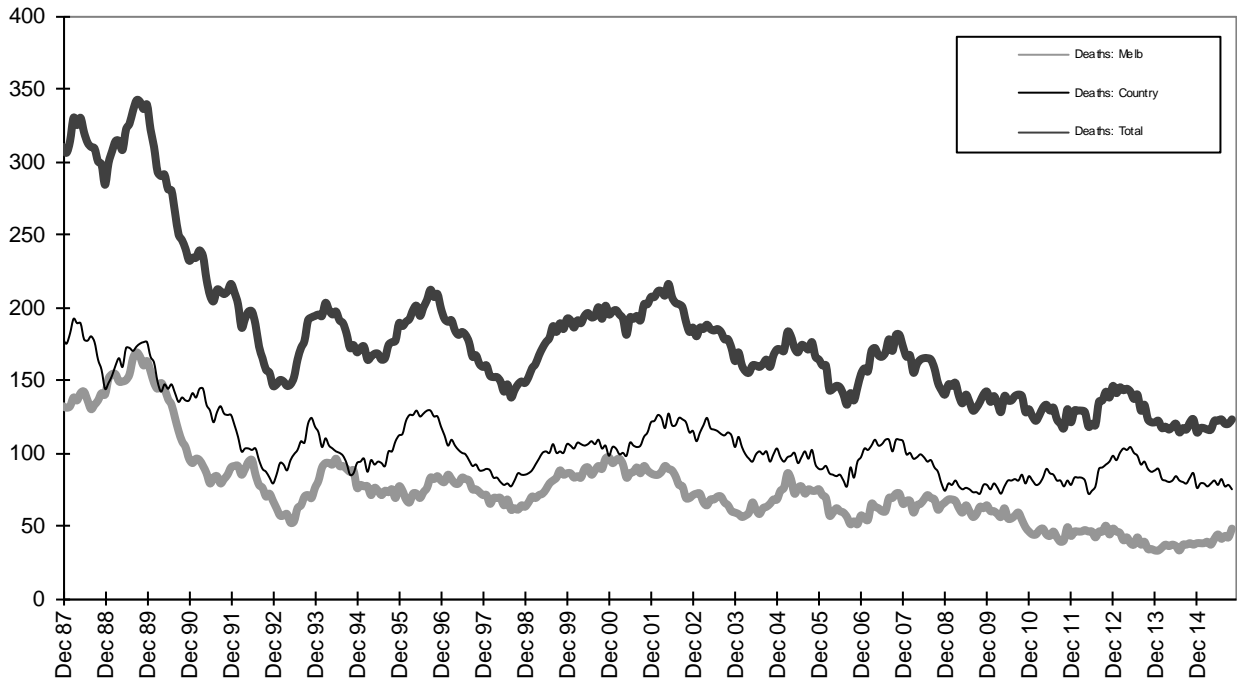
Graph 1a - Melbourne/country fatalities



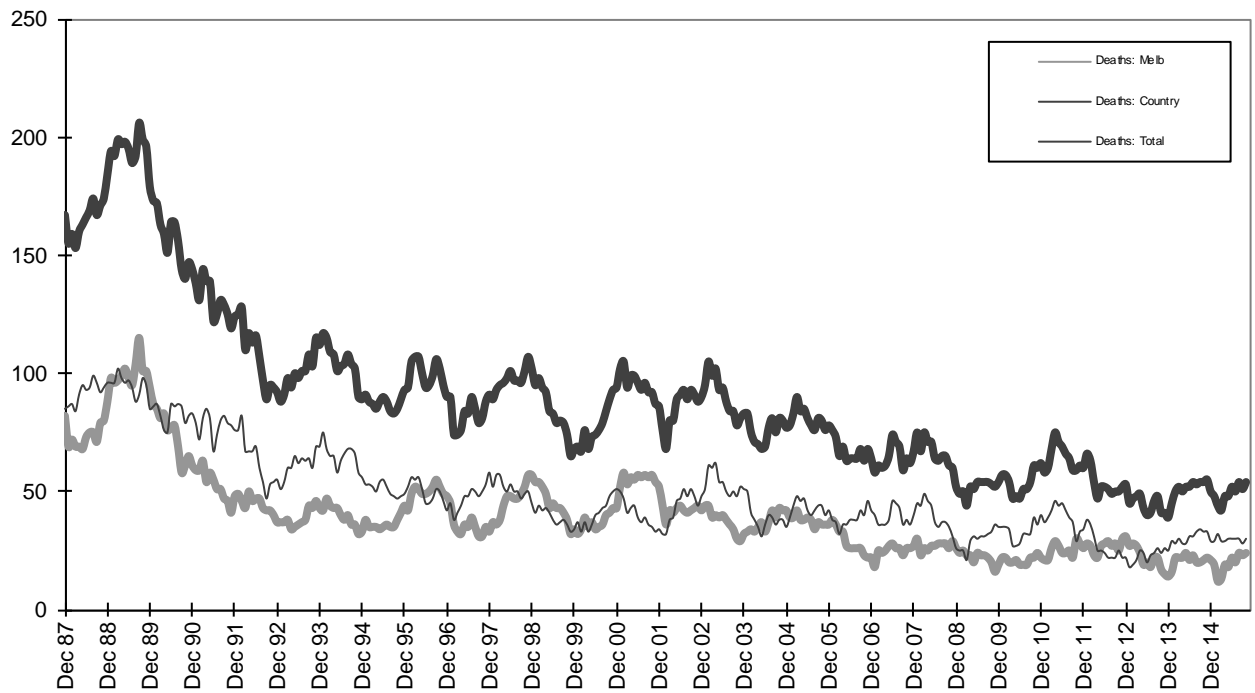
Graph 1b - Melbourne/country Claims involving an acute hospital admission



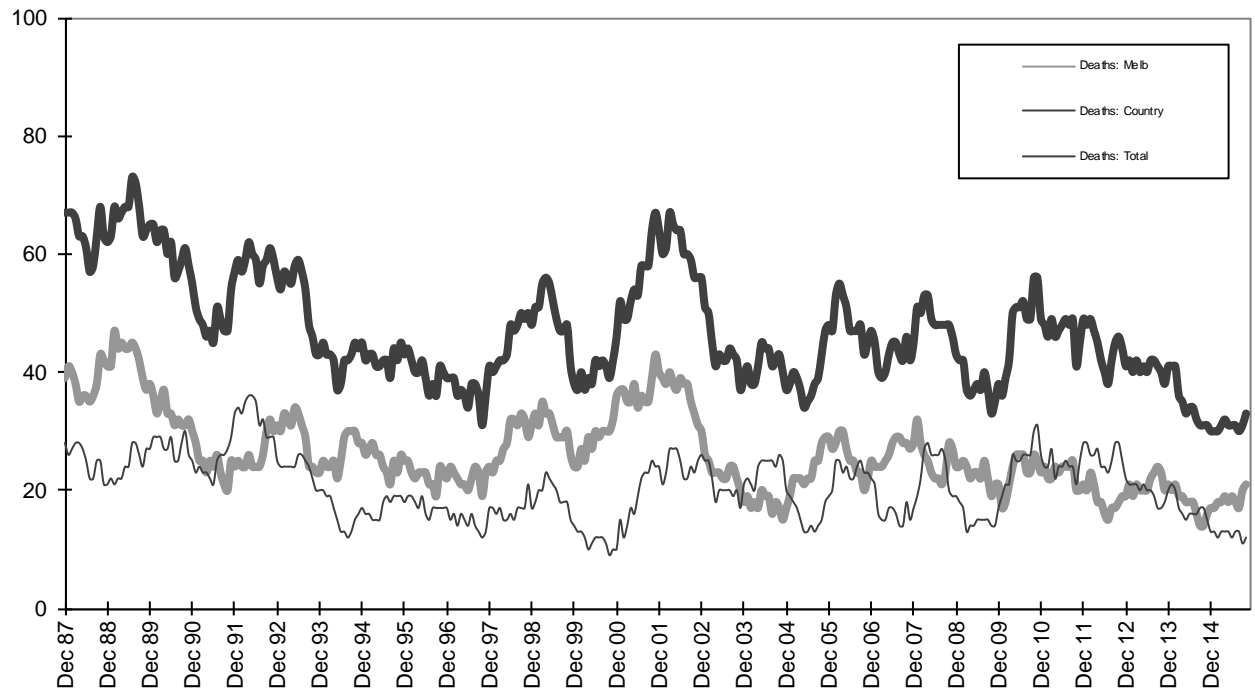
Graph 2a - Pedestrian fatalities (Melbourne/country)



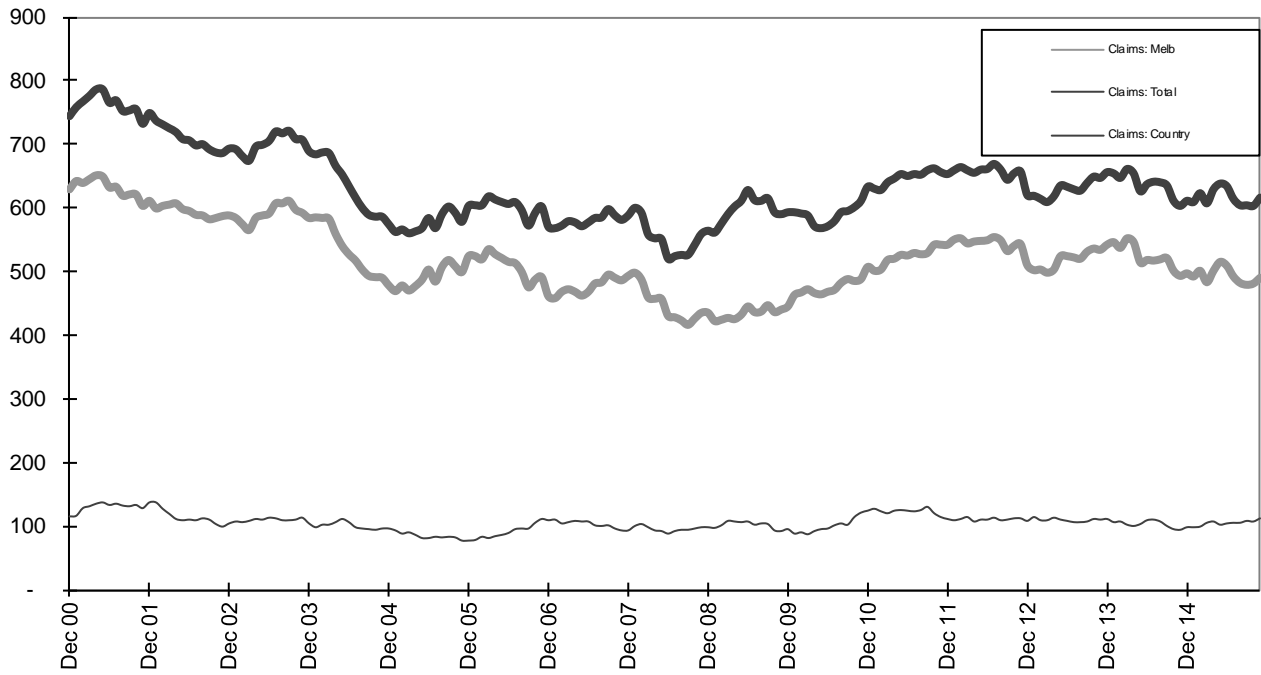
Graph 2b - Driver fatalities (Melbourne/country)



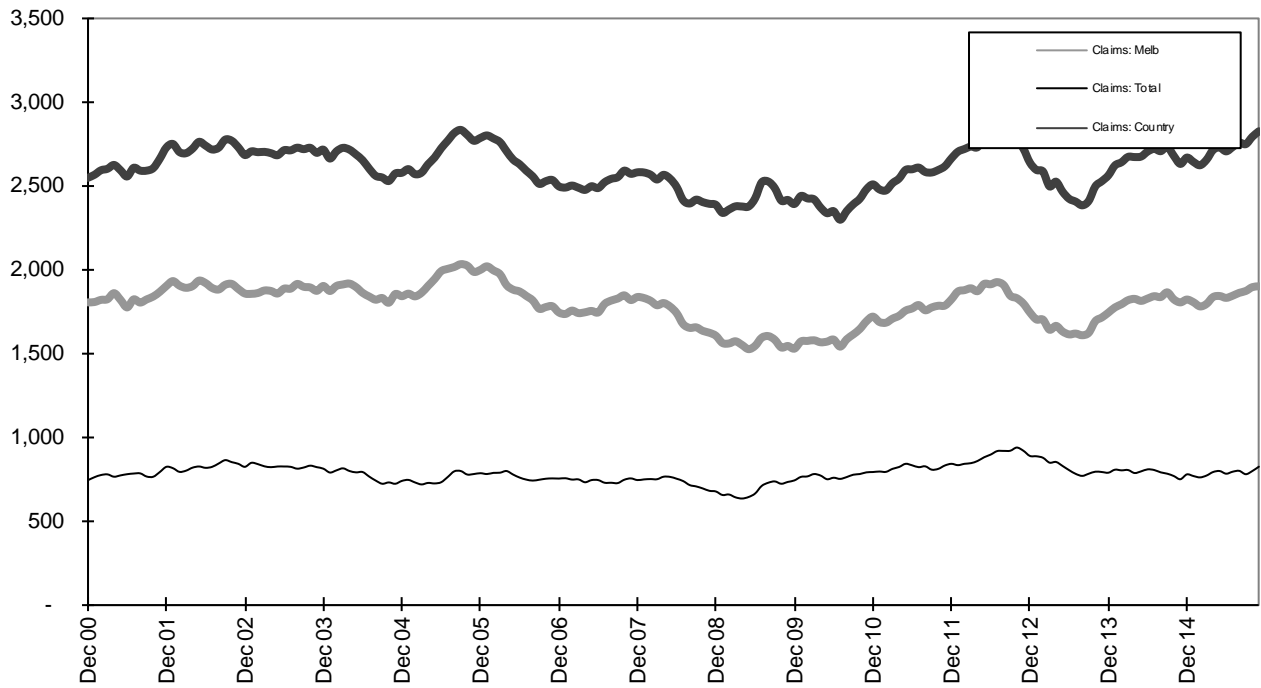
Graph 2c - Passenger fatalities (Melbourne/country)



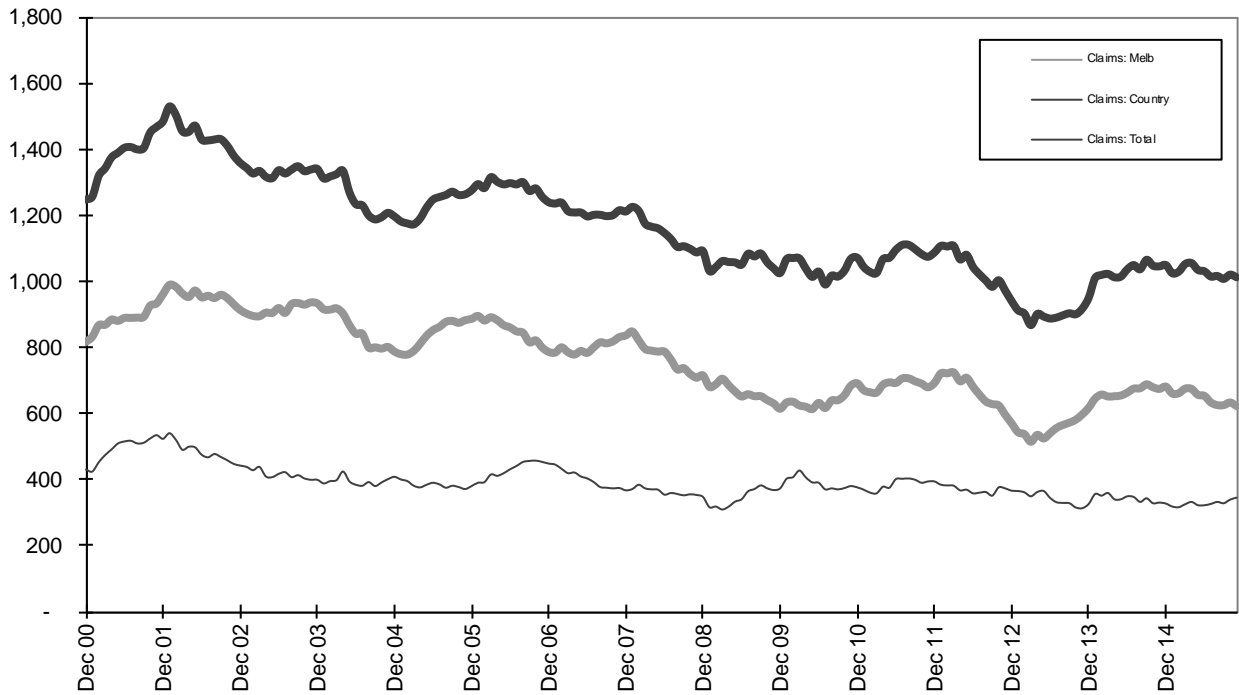
Graph 2d - Motorcyclist fatalities (Melbourne/country)



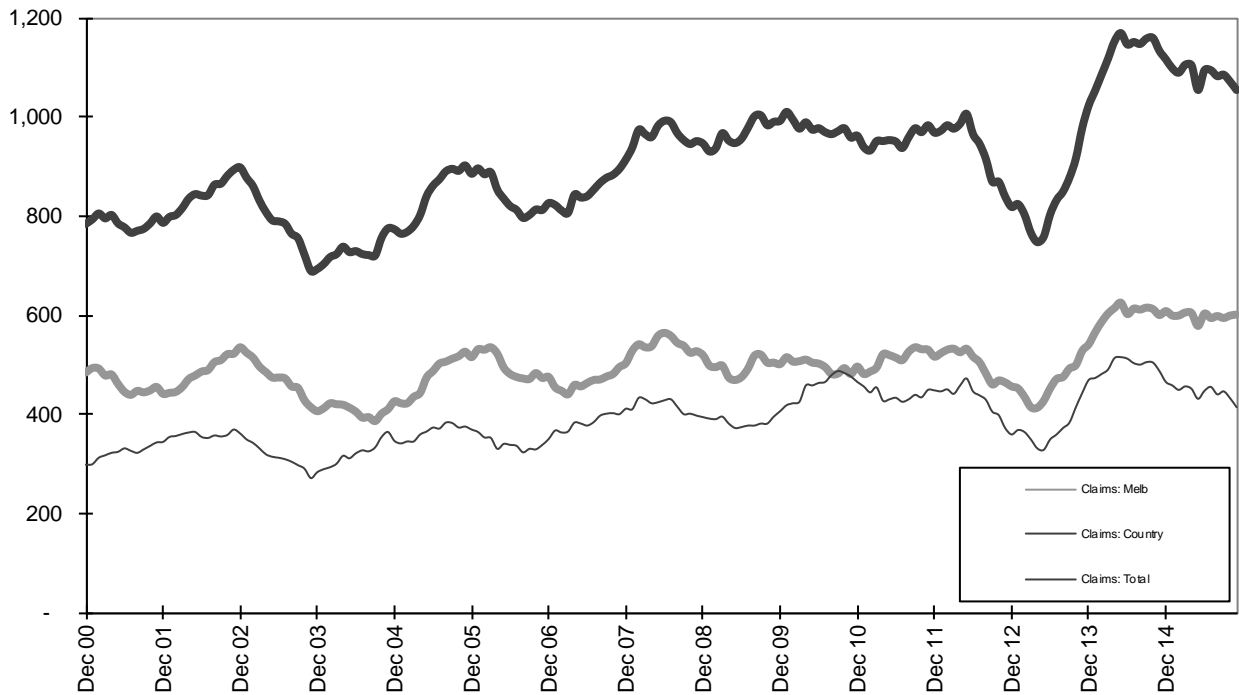
Graph 3a – Pedestrian Claims involving an acute hospital admission (Melbourne/country)



Graph 3b – Driver Claims involving an acute hospital admission (Melbourne/country)



Graph 3c - Passenger Claims involving an acute hospital admission (Melbourne/country)



Graph 3d - Motorcyclist Claims involving an acute hospital admission (Melbourne/country)