



ROAD SAFETY STATISTICAL SUMMARY

December 2012



**TRANSPORT
ACCIDENT
COMMISSION**

60 Brougham Street
Geelong Vic 3220
PO Box 742
Geelong Vic 3220
Ausdoc DX 216079 Geelong

Telephone 1300 654 329
STD Toll Free 1800 332 556
Fax: 03 9656 9300
www.tac.vic.gov.au
ABN 22 033 947 623



Contents

Status Report.....	4
Fatalities.....	4
Claims involving acute hospitalisation over 14 days and an acute hospital admission*	5
Fatalities: 12 months to December	6
Claims involving acute hospitalisation over 14 days: 12 months to June (claim acceptance date).....	8
Claims involving an acute hospital admission: 12 months to June (claim acceptance date).....	10
Fatalities: Victorian monthly totals since 1951	12
Fatalities by Week (2007 to 2012).....	13
Alcohol Related Fatalities.....	14
The National Picture	15
Booze-Bus Random Breath Testing*	16
Mobile Safety Camera Data	16
Explanations and References	17
Useful Internet Sites.....	18
Figures	19

Note about the data in this report

- All data provided in this report is the data most recently available at time of production. Fatalities, breath-test data and safety camera data are updated to the end of report month. A 6-month lag applies to TAC claims data, and a 2-month lag applies to alcohol related fatalities data.
- Note that reported data inclusive of February 2008 or February 2012 will have one extra day of exposure compared to non-leap years.

*An acute hospital admission refers to a hospital admission that occurred within 7 days of accident.

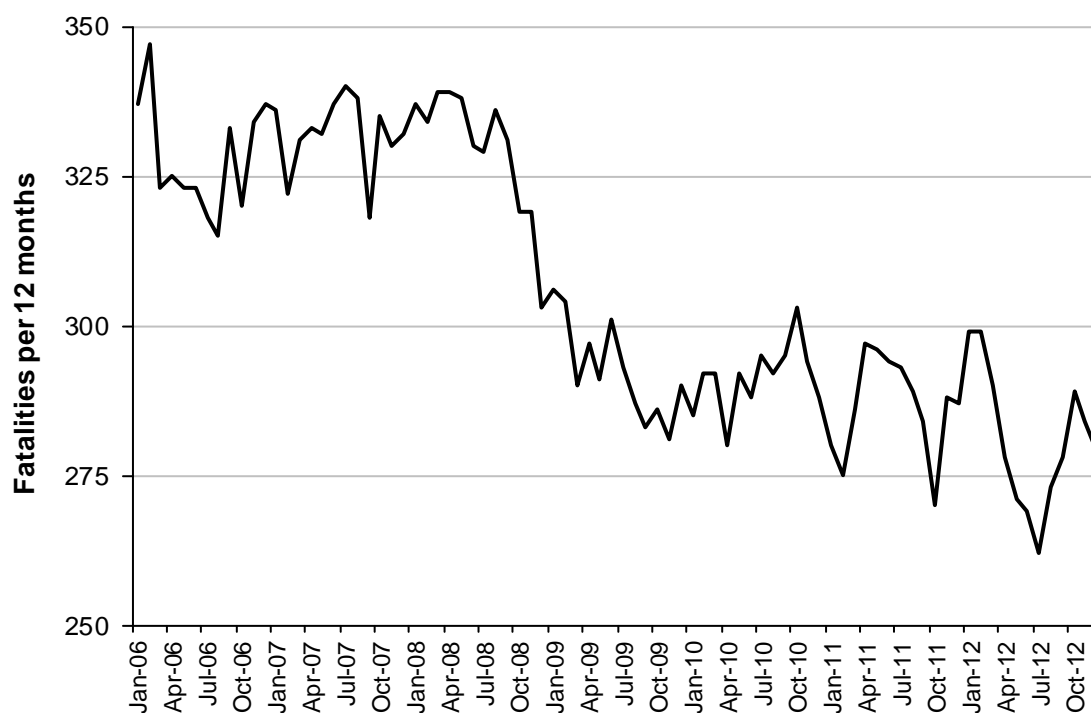
Status Report

Fatalities

- The number of road fatalities in 2012 stands at 279, 3% less than in 2011 (287).
- 25 people were fatally injured in November 2012 and 22 in December 2012 on Victorian roads. This compares to 30 in November 2011 and 27 in December 2011.

Fatalities (year to date, to end December 2012)

Category	2012	2011	2010	2012 v 2011		2012 v 2010		5 Year Av
Fatal Injuries (Rolling 12 Month Total)								
Fatal (to December)	279	287	288	-8	(-3%)	-9	(-3%)	296
per 10,000 veh	0.65	0.68	0.70	-0.03	(-4%)	-0.05	(-7%)	0.73
per 100,000 pop	4.96	5.19	5.27	-0.23	(-4%)	-0.31	(-6%)	5.47
Accidents (Rolling 12 Month Total)								
Fatal (to December)	257	259	260	-2	(-1%)	-3	(-1%)	264
per 10,000 veh	0.59	0.61	0.63	-0.02	(-3%)	-0.04	(-6%)	0.66
per 100,000 pop	4.57	4.68	4.75	-0.11	(-2%)	-0.18	(-4%)	4.97

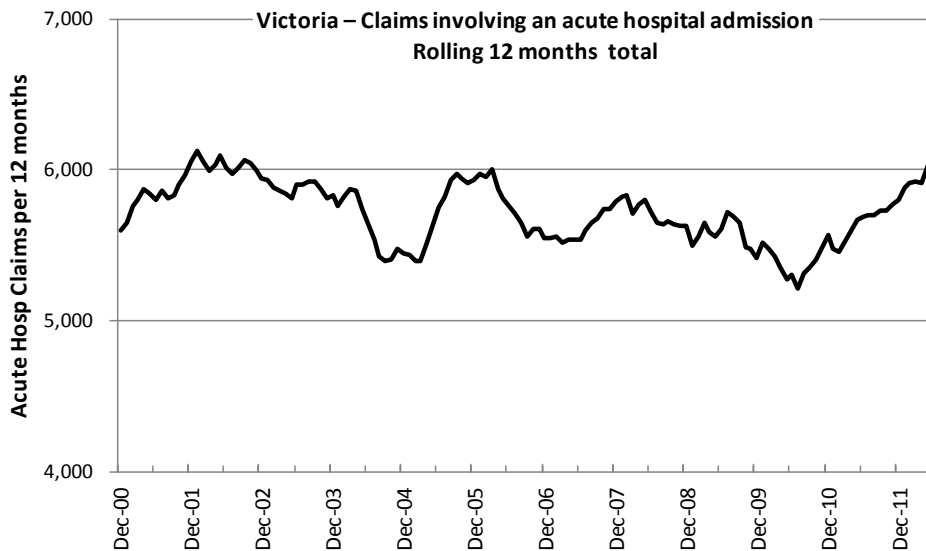
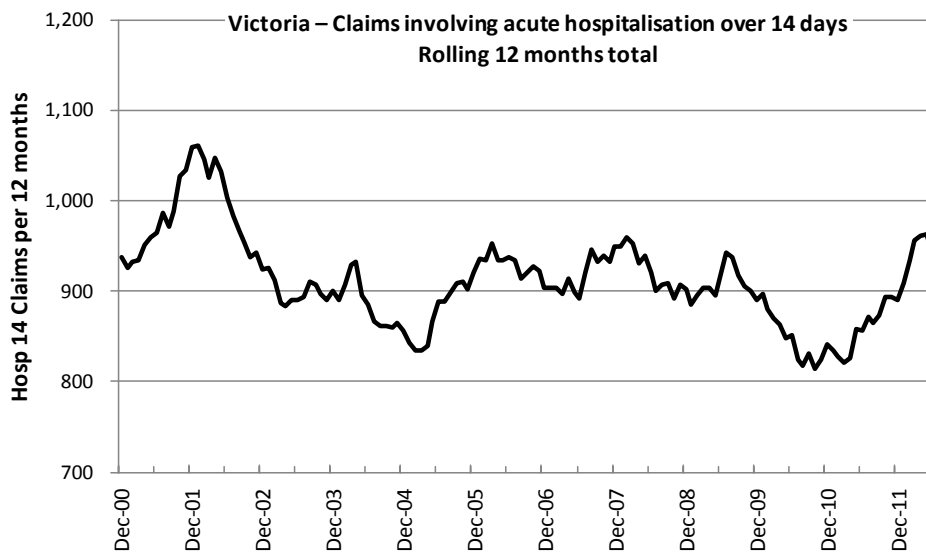


Victoria – Fatalities, rolling 12 months total

Note: Data is subject to revision as additional information about known accidents is received, and as new accident reports are received and processed.

Claims involving acute hospitalisation over 14 days and an acute hospital admission*
 (by claim acceptance date - year to date, to midnight 30 June 2012)

Category	2012	2011	2010	2012 v 2011	2012 v 2010	5 Year Av
Claims involving acute hospitalisation over 14 days (Rolling 12 Month Total)						
Claims (to June)	939	856	852	83 (10%)	87 (10%)	888
per 10,000 veh	2.2	2.0	2.1	0.2 (10%)	0.1 (5%)	2.3
per 100,000 pop	16.9	15.6	15.7	1.3 (8%)	1.2 (8%)	16.9
Claims involving an acute hospital admission (Rolling 12 Month Total)						
Claims (to June)	5,974	5,688	5,308	286 (5%)	666 (13%)	5,573
per 10,000 veh	14.0	13.6	13.0	0.4 (3%)	1 (8%)	14.1
per 100,000 pop	107.3	103.4	97.7	3.9 (4%)	9.6 (10%)	105.3



Note: Data is subject to revision as additional information about known claims is received, and as new claims are received and processed.

*An acute hospital admission refers to a hospital admission that occurred within 7 days of accident.

Fatalities: 12 months to December

Category	2012	2011	2010	2012 v 2011		2012 v 2010		5 Year Av
Overview								
Fatalities	279	287	288	-8	(-3%)	-9	(-3%)	296
Accidents	257	259	260	-2	(-1%)	-3	(-1%)	264
Sex								
Male	196	211	221	-15	(-7%)	-25	(-11%)	216
Female	83	76	67	7	(9%)	16	(24%)	84
Roaduser								
Bicyclist	7	8	8	-1	(-13%)	-1	(-13%)	7
Driver	143	121	130	22	(18%)	13	(10%)	141
Motorcyclist	41	49	49	-8	(-16%)	-8	(-16%)	45
Passenger	53	60	62	-7	(-12%)	-9	(-15%)	59
Pedestrian	35	49	39	-14	(-29%)	-4	(-10%)	48
Location								
Melbourne	126	129	125	-3	(-2%)	1	(1%)	145
Rural Victoria	153	158	163	-5	(-3%)	-10	(-6%)	155
Agegroup								
0-4	3	7	5	-4	(-57%)	-2	(-40%)	5
5-15	7	8	8	-1	(-13%)	-1	(-13%)	9
16-17	3	12	5	-9	(-75%)	-2	(-40%)	9
18-20	29	32	33	-3	(-9%)	-4	(-12%)	34
21-25	33	34	37	-1	(-3%)	-4	(-11%)	37
26-29	18	15	29	3	(20%)	-11	(-38%)	23
30-39	45	37	34	8	(22%)	11	(32%)	43
40-49	27	38	35	-11	(-29%)	-8	(-23%)	39
50-59	38	30	35	8	(27%)	3	(9%)	34
60-69	31	30	23	1	(3%)	8	(35%)	24
70+	44	44	44	0	(0%)	0	(0%)	44
Alctime								
High (Melb)	60	68	70	-8	(-12%)	-10	(-14%)	76
High (Rural)	73	81	87	-8	(-10%)	-14	(-16%)	75
High (Vic)	133	149	157	-16	(-11%)	-24	(-15%)	151
Low (Melb)	66	61	55	5	(8%)	11	(20%)	69
Low (Rural)	80	77	76	3	(4%)	4	(5%)	80
Low (Vic)	146	138	131	8	(6%)	15	(11%)	149
Accident Type								
Intersection								
Adjacent direction	27	32	29	-5	(-16%)	-2	(-7%)	26
Opposing direction	4	7	5	-3	(-43%)	-1	(-20%)	8
Mid-block/other								
Head on	43	38	37	5	(13%)	6	(16%)	38
Same direction	13	13	21	0	(0%)	-8	(-38%)	17
Manoeuvre/o'taking	19	14	18	5	(36%)	1	(6%)	16
On path	6	5	10	1	(20%)	-4	(-40%)	6
Single vehicle	124	118	125	6	(5%)	-1	(-1%)	129
Other (incl peds)	43	60	43	-17	(-28%)	0	(0%)	60

Fatalities: 12 months to December – Continued

Category	2012	2011	2010	2012 v 2011		2012 v 2010		5 Year Av
Police Service Area (based on Local Government Area (see p.13))								
BALLARAT	2	7	9	-5	(-71%)	-7	(-78%)	6
BANYULE	3	2	3	1	(50%)	0	(0%)	2
BASS COAST	6	8	5	-2	(-25%)	1	(20%)	5
BAW BAW	5	6	12	-1	(-17%)	-7	(-58%)	8
BENALLA	7	8	11	-1	(-13%)	-4	(-36%)	8
BENDIGO	9	6	6	3	(50%)	3	(50%)	7
BOROONDARA	1	3	1	-2	(-67%)	0	(0%)	4
BRIMBANK	8	11	2	-3	(-27%)	6	(300%)	7
CAMPASPE	9	2	3	7	(350%)	6	(200%)	3
CARDINIA	7	9	7	-2	(-22%)	0	(0%)	6
CASEY	5	4	13	1	(25%)	-8	(-62%)	11
CENTRAL GOLDFIELDS	2	2	7	0	(0%)	-5	(-71%)	5
DAREBIN	5	2	3	3	(150%)	2	(67%)	4
EAST GIPPSLAND	7	8	7	-1	(-13%)	0	(0%)	10
FRANKSTON	3	4	5	-1	(-25%)	-2	(-40%)	5
GEELONG	16	14	9	2	(14%)	7	(78%)	8
GLEN EIRA	5	5	3	0	(0%)	2	(67%)	5
GREATER DANDENONG	6	4	4	2	(50%)	2	(50%)	6
HOBSONS BAY	0	1	1	-1	(-100%)	-1	(-100%)	3
HORSHAM	3	7	4	-4	(-57%)	-1	(-25%)	4
HUME	10	5	5	5	(100%)	5	(100%)	7
KINGSTON	9	3	3	6	(200%)	6	(200%)	5
KNOX	0	2	3	-2	(-100%)	-3	(-100%)	4
LA TROBE	8	3	5	5	(167%)	3	(60%)	6
MACEDON RANGES	8	2	7	6	(300%)	1	(14%)	6
MANNINGHAM	4	1	2	3	(300%)	2	(100%)	3
MARIBYRNONG	4	0	1	4	(300%)	3	(300%)	2
MAROONDAH	4	5	1	-1	(-20%)	3	(300%)	3
MELBOURNE	3	7	4	-4	(-57%)	-1	(-25%)	6
MELTON	6	7	6	-1	(-14%)	0	(0%)	6
MILDURA	1	3	4	-2	(-67%)	-3	(-75%)	4
MITCHELL	9	6	11	3	(50%)	-2	(-18%)	9
MONASH	5	5	1	0	(0%)	4	(400%)	6
MOONEE VALLEY	1	1	2	0	(0%)	-1	(-50%)	3
MOORABOOL	10	10	9	0	(0%)	1	(11%)	7
MORELAND	2	3	7	-1	(-33%)	-5	(-71%)	4
MORNINGTON PENINSULA	6	9	9	-3	(-33%)	-3	(-33%)	10
NILLUMBIK	2	3	1	-1	(-33%)	1	(100%)	2
NORTHERN GRAMPIANS	7	2	4	5	(250%)	3	(75%)	3
PORT PHILLIP	1	1	3	0	(0%)	-2	(-67%)	2
SHEPPARTON	11	5	4	6	(120%)	7	(175%)	6
SOUTHERN GRAMPIANS	5	7	4	-2	(-29%)	1	(25%)	6
STONNINGTON	2	2	0	0	(0%)	2	(100%)	2
SURF COAST	4	14	9	-10	(-71%)	-5	(-56%)	9
SWAN HILL	6	5	7	1	(20%)	-1	(-14%)	8
WANGARATTA	9	17	8	-8	(-47%)	1	(13%)	13
WARRNAMBOOL	2	7	8	-5	(-71%)	-6	(-75%)	6
WELLINGTON	2	8	4	-6	(-75%)	-2	(-50%)	6
WHITEHORSE	3	5	5	-2	(-40%)	-2	(-40%)	4
WHITTLESEA	6	5	15	1	(20%)	-9	(-60%)	7
WODONGA	4	1	6	3	(300%)	-2	(-33%)	4
WYNDHAM	9	9	4	0	(0%)	5	(125%)	6
YARRA	2	1	5	1	(100%)	-3	(-60%)	3
YARRA RANGES	5	10	6	-5	(-50%)	-1	(-17%)	10

Claims involving acute hospitalisation over 14 days: 12 months to June (claim acceptance date)

Category	2012	2011	2010	2012 v 2011	2012 v 2010	5 Year Av
Overview						
Claims	939	856	852	83 (10%)	87 (10%)	889
Sex						
Male	542	529	530	13 (2%)	12 (2%)	539
Female	397	326	322	71 (22%)	75 (23%)	349
Roaduser						
Bicyclist	42	39	38	3 (8%)	4 (11%)	36
Driver	354	323	324	31 (10%)	30 (9%)	333
Motorcyclist	169	166	179	3 (2%)	-10 (-6%)	166
Passenger	156	139	142	17 (12%)	14 (10%)	161
Pedestrian	190	176	158	14 (8%)	32 (20%)	168
Tram/train	9	7	5	2 (29%)	4 (80%)	5
Location						
Melbourne	617	552	530	65 (12%)	87 (16%)	564
Rural Victoria	315	289	316	26 (9%)	-1 (-0%)	296
Agegroup						
0-4	1	7	5	-6 (-86%)	-4 (-80%)	4
5-15	18	11	19	7 (64%)	-1 (-5%)	16
16-17	27	18	20	9 (50%)	7 (35%)	23
18-20	51	56	70	-5 (-9%)	-19 (-27%)	69
21-25	87	84	75	3 (4%)	12 (16%)	93
26-29	65	52	58	13 (25%)	7 (12%)	53
30-39	116	111	113	5 (5%)	3 (3%)	123
40-49	121	118	113	3 (3%)	8 (7%)	117
50-59	104	99	95	5 (5%)	9 (9%)	100
60-69	118	93	82	25 (27%)	36 (44%)	91
70+	231	207	202	24 (12%)	29 (14%)	200
Alctime						
High (Melb)	278	245	245	33 (13%)	33 (13%)	254
High (Rural)	130	124	124	6 (5%)	6 (5%)	124
High (Vic)	408	777	777	-369 (-47%)	-369 (-47%)	378
Low (Melb)	339	307	307	32 (10%)	32 (10%)	311
Low (Rural)	185	165	165	20 (12%)	20 (12%)	171
Low (Vic)	524	996	996	-472 (-47%)	-472 (-47%)	482
Accident Type						
Intersection						
Adjacent direction	122	115	119	7 (6%)	3 (3%)	119
Opposing direction	67	67	54	0 (0%)	13 (24%)	60
Mid-block/other						
Head on	75	89	63	-14 (-16%)	12 (19%)	77
Same direction	95	93	84	2 (2%)	11 (13%)	77
Manoeuvre/o'taking	55	49	46	6 (12%)	9 (20%)	51
On path	23	16	39	7 (44%)	-16 (-41%)	23
Single vehicle	264	228	256	36 (16%)	8 (3%)	267
Other (incl peds)	238	199	191	39 (20%)	47 (25%)	190

Note: excludes rejected claims and claims for interstate crashes

Claims involving acute hospitalisation over 14 days: 12 months to June (claim acceptance date) - Continued

Category	2012	2011	2010	2012 v 2011		2012 v 2010		5 Year Av
Police Service Area (based on Local Government Area (see p.13))								
BALLARAT	11	18	10	-7	(-39%)	1	(10%)	13
BANYULE	11	10	13	1	(10%)	-2	(-15%)	10
BASS COAST	19	11	23	8	(73%)	-4	(-17%)	19
BAW BAW	16	10	7	6	(60%)	9	(129%)	7
BENALLA	15	17	22	-2	(-12%)	-7	(-32%)	16
BENDIGO	17	21	18	-4	(-19%)	-1	(-6%)	14
BOROONDARA	30	24	21	6	(25%)	9	(43%)	21
BRIMBANK	33	17	16	16	(94%)	17	(106%)	20
CAMPASPE	5	5	3	0	(0%)	2	(67%)	6
CARDINIA	18	16	17	2	(13%)	1	(6%)	16
CASEY	25	23	35	2	(9%)	-10	(-29%)	33
CENTRAL GOLDFIELDS	2	2	-	0	(0%)	2		3
DAREBIN	13	16	19	-3	(-19%)	-6	(-32%)	20
EAST GIPPSLAND	16	14	13	2	(14%)	3	(23%)	15
FRANKSTON	15	18	17	-3	(-17%)	-2	(-12%)	19
GEELONG	27	23	24	4	(17%)	3	(13%)	29
GLEN EIRA	26	37	29	-11	(-30%)	-3	(-10%)	31
GREATER DANDENONG	34	22	32	12	(55%)	2	(6%)	27
HOBSONS BAY	11	10	8	1	(10%)	3	(38%)	10
HORSHAM	12	5	13	7	(140%)	-1	(-8%)	5
HUME	31	21	22	10	(48%)	9	(41%)	27
KINGSTON	19	17	22	2	(12%)	-3	(-14%)	18
KNOX	18	16	12	2	(13%)	6	(50%)	17
LA TROBE	15	20	9	-5	(-25%)	6	(67%)	13
MACEDON RANGES	13	17	19	-4	(-24%)	-6	(-32%)	15
MANNINGHAM	18	12	10	6	(50%)	8	(80%)	12
MARIBYRNONG	13	17	14	-4	(-24%)	-1	(-7%)	14
MAROONDAH	13	12	6	1	(8%)	7	(117%)	11
MELBOURNE	26	34	31	-8	(-24%)	-5	(-16%)	26
MELTON	13	11	9	2	(18%)	4	(44%)	9
MILDURA	12	5	6	7	(140%)	6	(100%)	6
MITCHELL	18	14	20	4	(29%)	-2	(-10%)	15
MONASH	25	20	24	5	(25%)	1	(4%)	25
MOONEE VALLEY	17	14	13	3	(21%)	4	(31%)	15
MOORABOOL	13	11	16	2	(18%)	-3	(-19%)	15
MORELAND	21	22	15	-1	(-5%)	6	(40%)	21
MORNINGTON PENINSULA	33	31	25	2	(6%)	8	(32%)	26
NILLUMBIK	5	5	2	0	(0%)	3	(150%)	5
NORTHERN GRAMPPIANS	6	4	2	2	(50%)	4	(200%)	6
PORT PHILLIP	15	8	15	7	(88%)	0	(0%)	15
SHEPPARTON	9	8	14	1	(13%)	-5	(-36%)	15
SOUTHERN GRAMPPIANS	7	10	13	-3	(-30%)	-6	(-46%)	8
STONNINGTON	19	23	13	-4	(-17%)	6	(46%)	17
SURF COAST	13	13	9	0	(0%)	4	(44%)	11
SWAN HILL	2	5	6	-3	(-60%)	-4	(-67%)	7
WANGARATTA	15	18	22	-3	(-17%)	-7	(-32%)	17
WARRNAMBOOL	20	10	12	10	(100%)	8	(67%)	10
WELLINGTON	8	12	13	-4	(-33%)	-5	(-38%)	12
WHITEHORSE	19	27	23	-8	(-30%)	-4	(-17%)	23
WHITTLESEA	29	12	20	17	(142%)	9	(45%)	16
WODONGA	14	5	10	9	(180%)	4	(40%)	11
WYNDHAM	26	12	11	14	(117%)	15	(136%)	15
YARRA	12	10	13	2	(20%)	-1	(-8%)	12
YARRA RANGES	29	35	23	-6	(-17%)	6	(26%)	34

Note: excludes rejected claims and claims for interstate crashes

Claims involving an acute hospital admission: 12 months to June (claim acceptance date)

Category	2012	2011	2010	2012 v 2011	2012 v 2010	5 Year Av
Overview						
Claims	5,974	5,688	5,308	286 (5%)	666 (13%)	5,573
Sex						
Male	3,424	3,265	3,093	159 (5%)	331 (11%)	3,231
Female	2,550	2,421	2,212	129 (5%)	338 (15%)	2,341
Roaduser						
Bicyclist	374	329	324	45 (14%)	50 (15%)	309
Driver	2,803	2,592	2,343	211 (8%)	460 (20%)	2,465
Motorcyclist	958	947	977	11 (1%)	-19 (-2%)	942
Passenger	1,037	1,093	1,027	-56 (-5%)	10 (1%)	1,102
Pedestrian	658	651	571	7 (1%)	87 (15%)	589
Tram/train	26	24	17	2 (8%)	9 (53%)	15
Location						
Melbourne	4,034	3,824	3,495	210 (5%)	539 (15%)	3,668
Rural Victoria	1,862	1,818	1,768	44 (2%)	94 (5%)	1,722
Agegroup						
0-4	47	55	44	-8 (-15%)	3 (7%)	51
5-15	197	188	224	9 (5%)	-27 (-12%)	218
16-17	126	135	141	-9 (-7%)	-15 (-11%)	158
18-20	557	564	538	-7 (-1%)	19 (4%)	584
21-25	775	695	656	80 (12%)	119 (18%)	716
26-29	445	431	427	14 (3%)	18 (4%)	428
30-39	925	896	888	29 (3%)	37 (4%)	936
40-49	891	857	768	34 (4%)	123 (16%)	820
50-59	749	703	632	46 (7%)	117 (19%)	637
60-69	539	498	389	41 (8%)	150 (39%)	430
70+	723	666	601	57 (9%)	122 (20%)	593
Alctime						
High (Melb)	1,850	1,772	1,549	78 (4%)	301 (19%)	1,685
High (Rural)	793	820	796	-27 (-3%)	-3 (-0%)	754
High (Vic)	2,643	2,592	2,345	51 (2%)	298 (13%)	2,439
Low (Melb)	2,184	2,052	1,946	132 (6%)	238 (12%)	1,983
Low (Rural)	1,069	998	972	71 (7%)	97 (10%)	968
Low (Vic)	3,253	3,050	2,918	203 (7%)	335 (11%)	2,951
Accident Type						
Intersection						
Adjacent direction	926	850	810	76 (9%)	116 (14%)	852
Opposing direction	497	457	446	40 (9%)	51 (11%)	443
Mid-block/other						
Head on	318	362	291	-44 (-12%)	27 (9%)	322
Same direction	960	958	768	2 (0%)	192 (25%)	806
Manoeuvre/o'taking	299	338	300	-39 (-12%)	-1 (-0%)	310
On path	234	198	222	36 (18%)	12 (5%)	198
Single vehicle	1,637	1,612	1,631	25 (2%)	6 (0%)	1,653
Other (incl peds)	1,103	913	840	190 (21%)	263 (31%)	828

Note: excludes rejected claims and claims for interstate crashes

Claims involving an acute hospital admission: 12 months to June (claim acceptance date) - Continued

Category	2012	2011	2010	2012 v 2011		2012 v 2010		5 Year Av
Police Service Area (based on Local Government Area (see p.13))								
BALLARAT	100	106	82	-6	(-6%)	18	(22%)	84
BANYULE	70	55	58	15	(27%)	12	(21%)	63
BASS COAST	98	73	78	25	(34%)	20	(26%)	82
BAW BAW	65	53	48	12	(23%)	17	(35%)	48
BENALLA	96	102	123	-6	(-6%)	-27	(-22%)	104
BENDIGO	119	94	78	25	(27%)	41	(53%)	79
BOROONDARA	144	136	141	8	(6%)	3	(2%)	135
BRIMBANK	191	126	101	65	(52%)	90	(89%)	139
CAMPASPE	43	39	41	4	(10%)	2	(5%)	39
CARDINIA	88	107	81	-19	(-18%)	7	(9%)	88
CASEY	249	232	239	17	(7%)	10	(4%)	229
CENTRAL GOLDFIELDS	8	6	6	2	(33%)	2	(33%)	12
DAREBIN	89	114	107	-25	(-22%)	-18	(-17%)	109
EAST GIPPSLAND	73	64	56	9	(14%)	17	(30%)	54
FRANKSTON	146	144	137	2	(1%)	9	(7%)	133
GEE LONG	237	235	214	2	(1%)	23	(11%)	230
GLEN EIRA	176	181	158	-5	(-3%)	18	(11%)	160
GREATER DANDENONG	205	206	183	-1	(-0%)	22	(12%)	176
HOBSONS BAY	71	63	58	8	(13%)	13	(22%)	67
HORSHAM	37	40	30	-3	(-8%)	7	(23%)	31
HUME	149	157	146	-8	(-5%)	3	(2%)	155
KINGSTON	131	124	134	7	(6%)	-3	(-2%)	131
KNOX	117	131	111	-14	(-11%)	6	(5%)	127
LA TROBE	65	76	60	-11	(-14%)	5	(8%)	59
MACEDON RANGES	71	86	89	-15	(-17%)	-18	(-20%)	77
MANNINGHAM	72	61	69	11	(18%)	3	(4%)	71
MARIBYRNONG	98	80	67	18	(23%)	31	(46%)	73
MAROONDAH	77	73	75	4	(5%)	2	(3%)	70
MELBOURNE	235	237	193	-2	(-1%)	42	(22%)	190
MELTON	79	75	66	4	(5%)	13	(20%)	64
MILDURA	47	34	26	13	(38%)	21	(81%)	32
MITCHELL	90	72	83	18	(25%)	7	(8%)	75
MONASH	183	155	150	28	(18%)	33	(22%)	165
MOONEE VALLEY	115	87	85	28	(32%)	30	(35%)	104
MOORABOOL	98	85	91	13	(15%)	7	(8%)	92
MORELAND	154	145	119	9	(6%)	35	(29%)	135
MORNINGTON PENINSULA	184	180	140	4	(2%)	44	(31%)	164
NILLUMBIK	42	38	31	4	(11%)	11	(35%)	32
NORTHERN GRAMPPIANS	35	29	28	6	(21%)	7	(25%)	35
PORT PHILLIP	122	107	95	15	(14%)	27	(28%)	119
SHEPPARTON	66	61	61	5	(8%)	5	(8%)	76
SOUTHERN GRAMPPIANS	45	52	35	-7	(-13%)	10	(29%)	39
STONNINGTON	119	134	110	-15	(-11%)	9	(8%)	114
SURF COAST	64	84	69	-20	(-24%)	-5	(-7%)	81
SWAN HILL	27	20	34	7	(35%)	-7	(-21%)	34
WANGARATTA	97	103	115	-6	(-6%)	-18	(-16%)	104
WARRNAMBOOL	98	100	108	-2	(-2%)	-10	(-9%)	81
WELLINGTON	71	90	77	-19	(-21%)	-6	(-8%)	66
WHITEHORSE	115	140	119	-25	(-18%)	-4	(-3%)	130
WHITTLESEA	151	111	125	40	(36%)	26	(21%)	114
WODONGA	69	56	66	13	(23%)	3	(5%)	60
WYNDHAM	157	135	90	22	(16%)	67	(74%)	117
YARRA	113	105	104	8	(8%)	9	(9%)	98
YARRA RANGES	192	185	203	7	(4%)	-11	(-5%)	196

Note: excludes rejected claims and claims for interstate crashes

Fatalities: Victorian monthly totals since 1951

Year	Jan	Feb	Mar	Apr	May	Jun	Jul	Aug	Sep	Oct	Nov	Dec	Totals
1951							61	59	52	38	29	41	
1952	45	40	54	61	54	69	67	55	44	44	31	20	584
1953	23	28	54	58	49	42	50	37	44	27	36	32	480
1954	44	42	28	60	55	36	63	33	25	52	30	41	509
1955	44	36	45	55	48	56	64	44	44	32	40	40	548
1956	34	48	51	67	53	65	71	47	39	39	44	48	606
1957	50	41	46	58	52	54	57	53	51	46	32	49	589
1958	50	38	42	58	54	41	54	53	57	40	57	52	596
1959	50	57	61	50	75	55	42	48	52	55	63	63	671
1960	49	53	57	76	70	70	67	62	61	77	52	66	760
1961	63	57	68	74	58	68	78	82	59	62	60	65	794
1962	65	41	76	78	72	80	70	77	62	53	64	70	808
1963	67	56	65	85	66	68	77	55	55	58	61	67	780
1964	73	71	78	71	83	89	80	89	67	66	62	75	904
1965	63	64	86	88	80	87	79	69	81	77	68	87	929
1966	75	59	75	103	74	86	87	80	75	66	90	85	955
1967	61	79	91	97	81	71	59	67	70	68	60	83	887
1968	70	78	86	78	73	76	73	77	72	80	81	105	949
1969	79	68	79	87	86	77	87	83	87	83	94	101	1,011
1970	85	84	106	80	87	88	110	106	78	95	68	74	1,061
1971	83	75	77	68	76	86	85	72	78	73	74	76	923
1972	61	62	75	82	75	71	98	85	83	62	80	81	915
1973	75	75	95	85	64	66	61	85	89	88	66	86	935
1974	56	62	81	60	70	73	67	62	53	70	80	72	806
1975	67	65	87	73	97	94	57	75	69	66	71	89	910
1976	79	78	88	78	69	79	60	70	82	78	77	100	938
1977	65	71	89	79	65	79	70	91	68	74	96	107	954
1978	75	54	95	63	64	69	68	77	65	84	83	72	869
1979	63	60	86	75	45	64	66	75	69	79	72	93	847
1980	48	55	66	59	47	56	60	53	45	58	61	49	657
1981	69	60	58	61	74	65	61	63	68	71	59	57	766
1982	55	53	59	59	67	45	47	71	53	69	65	66	709
1983	42	59	53	63	62	61	65	51	59	43	54	52	664
1984	65	48	58	50	56	48	46	50	71	53	55	58	658
1985	56	47	50	65	75	50	51	50	58	61	56	64	683
1986	56	50	70	69	59	53	42	54	54	52	59	51	669
1987	62	43	57	52	63	59	62	49	62	61	55	80	705
1988	49	58	69	54	79	50	54	52	64	59	43	70	701
1989	76	65	80	59	67	73	52	65	82	50	41	66	776
1990	48	44	55	39	56	64	41	34	48	35	40	44	548
1991	45	39	70	30	34	29	44	47	41	36	35	53	503
1992	34	33	34	47	33	29	23	27	28	38	30	40	396
1993	27	40	37	39	44	33	33	27	34	39	43	40	436
1994	36	31	44	35	27	33	29	37	17	27	32	30	378
1995	38	35	26	33	34	41	27	34	34	32	38	46	418
1996	40	47	35	38	28	29	30	35	49	24	33	30	418
1997	36	25	30	30	40	22	39	26	26	29	39	35	377
1998	29	29	32	36	31	22	40	19	37	36	49	30	390
1999	32	31	35	35	34	24	35	26	28	38	29	37	384
2000	32	26	46	32	39	32	33	29	36	29	44	29	407
2001	44	30	31	32	31	41	34	37	35	51	41	37	444
2002	32	31	45	31	45	32	27	25	31	30	31	37	397
2003	21	41	36	28	31	28	20	23	23	24	24	31	330
2004	32	22	30	30	46	28	27	26	22	28	25	27	343
2005	33	27	47	21	29	23	30	25	25	33	17	36	346
2006	24	37	23	23	27	23	25	22	43	20	31	39	337
2007	23	23	32	25	26	28	28	20	23	37	26	41	332
2008	28	20	37	25	25	20	27	27	18	25	26	25	303
2009	31	18	23	32	19	30	19	21	14	28	21	34	290
2010	26	25	23	20	31	26	26	18	17	36	12	28	288
2011	18	20	34	31	30	24	25	14	12	22	30	27	287
2012	30	20	25	19	23	22	18	25	17	33	25	22	279
Ave	50	47	57	55	54	52	52	51	50	51	50	56	625
Max	85	84	106	103	97	94	110	106	89	95	96	107	1,061
Min	18	18	23	19	19	20	19	14	12	20	12	20	279

Fatalities by Week (2007 to 2012)

Week Ending	2007	2008	2009	2010	2011	2012	Cumulative 2012	% Change 2012-2011	12 Month Moving Total
1-Jan	3	1	3	1	2	1	1	-50%	286
8-Jan	2	8	11	6	1	3	4	33%	288
15-Jan	7	5	6	1	6	9	13	44%	291
22-Jan	5	4	2	9	4	7	20	54%	294
29-Jan	5	8	8	6	4	9	29	71%	299
5-Feb	7	5	1	9	8	4	33	32%	295
12-Feb	4	4	10	5	3	2	35	25%	294
19-Feb	10	4	3	8	5	10	45	36%	299
26-Feb	3	8	5	4	4	4	49	32%	299
4-Mar	9	8	2	6	8	1	50	11%	292
11-Mar	9	5	6	5	6	4	54	6%	290
18-Mar	3	13	3	4	9	12	66	10%	293
25-Mar	8	7	7	8	8	4	70	3%	289
1-Apr	4	10	8	5	5	7	77	5%	291
8-Apr	11	3	5	4	12	6	83	-2%	285
15-Apr	4	6	8	6	5	2	85	-6%	282
22-Apr	3	6	10	4	6	6	91	-5%	282
29-Apr	7	5	6	4	7	2	93	-10%	277
6-May	3	7	7	3	4	10	103	-4%	283
13-May	6	4	4	9	7	2	105	-8%	278
20-May	8	8	1	6	11	5	110	-12%	272
27-May	6	6	3	12	4	5	115	-11%	273
3-Jun	15	2	7	2	5	4	119	-11%	272
10-Jun	3	6	6	7	9	6	125	-13%	269
17-Jun	4	4	8	8	3	4	129	-12%	270
24-Jun	7	7	6	5	6	7	136	-11%	271
1-Jul	2	5	7	8	5	4	140	-11%	270
8-Jul	9	10	9	4	10	2	142	-15%	262
15-Jul	7	2	2	3	5	4	146	-15%	261
22-Jul	6	3	5	5	8	5	151	-16%	258
29-Jul	5	8	3	10	2	6	157	-14%	262
5-Aug	2	8	3	7	4	2	159	-15%	260
12-Aug	2	6	11	3	6	4	163	-15%	258
19-Aug	4	3	4	5	1	5	168	-13%	262
26-Aug	11	7	1	2	1	10	178	-8%	271
2-Sep	3	5	4	3	3	5	183	-7%	273
9-Sep	7	3	1	4	3	4	187	-6%	274
16-Sep	4	6	7	1	3	6	193	-5%	277
23-Sep	8	6	2	6	1	4	197	-3%	280
30-Sep	5	6	2	4	5	2	199	-5%	277
7-Oct	12	8	2	12	7	8	207	-4%	278
14-Oct	6	4	8	7	2	9	216	-1%	285
21-Oct	8	4	9	8	3	8	224	1%	290
28-Oct	6	4	8	6	7	5	229	0%	288
4-Nov	6	4	4	5	5	5	234	0%	288
11-Nov	7	7	6	0	12	7	241	-2%	283
18-Nov	4	10	6	3	8	7	248	-2%	282
25-Nov	7	3	4	3	5	4	252	-2%	281
2-Dec	8	4	5	7	7	7	259	-2%	281
9-Dec	16	9	5	6	6	7	266	-2%	282
16-Dec	5	3	11	6	7	4	270	-3%	279
23-Dec	8	9	10	9	6	4	274	-4%	277
31-Dec	8	2	5	4	3	5	279	-3%	279
Total	332	303	290	288	287				

Alcohol Related Fatalities

NOTE: UPDATES TO THIS DATA WERE NOT AVAILABLE AT TIME OF REPORT

- 24% of fatally injured and tested drivers and riders had a BAC at 0.05 g/100ml or over (41 of 172) compared to 25% over the previous 12 month period (43 of 169).
- In Melbourne, 21 drivers/riders fatally injured and tested were at or over 0.05, with 38% of these having a BAC in excess of 0.15 g/100ml. Across rural Victoria, 20 drivers/riders fatally injured and tested were at or over 0.05, with 65% of these having a BAC over 0.15.
- Of the 41 drivers and riders fatally injured and tested at or over 0.05, 15% (6) were aged under 21, 39% (16) were aged 21-29, 27% (11) were aged 30-39 and 20% (8) were aged 40 years and over. In the previous year (43 fatally injured) the corresponding figures were 19% (8), 28% (12), 19% (8) and 35% (15), respectively.

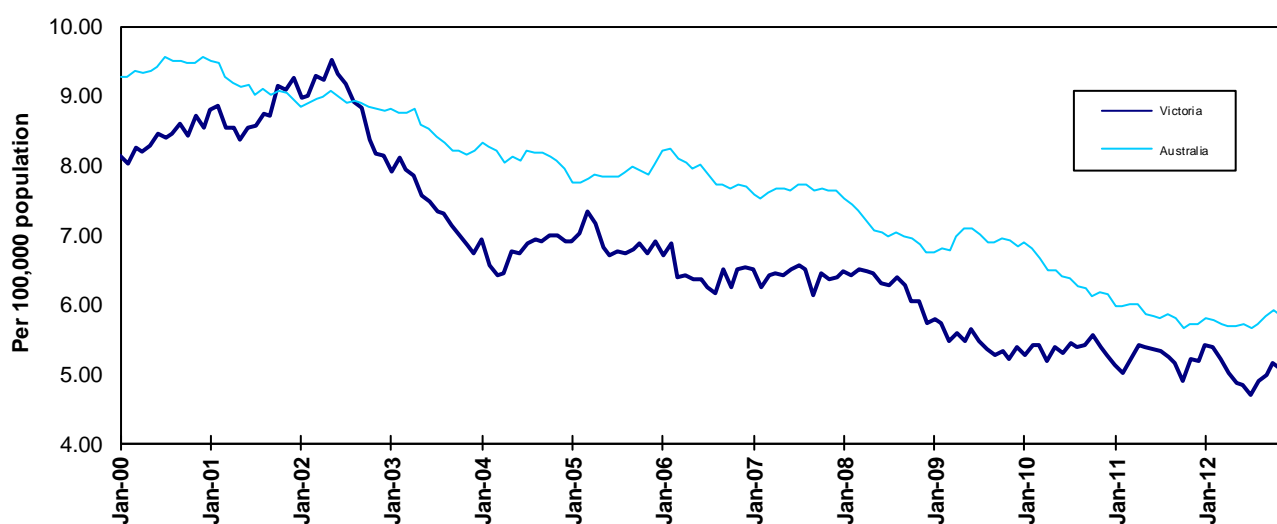
BAC Fatalities (12 months to April 2010)

Category	2010	2009	2008	2010 v 2009	2010 v 2008	5 Year Av
Melbourne Drivers and Riders						
<0.05	55	63	63	-8	(-13%)	62
[a] at 0.05 & above	21	17	25	4	(24%)	21
% at 0.05 & above	(28%)	(21%)	(28%)			(25%)
[b] >0.15	8	10	12	-2	(-20%)	9
%>0.15	(11%)	(13%)	(14%)			(11%)
[b] as a % of [a]	(38%)	(59%)	(48%)			(43%)
BAC Unknown	5	3	1	2	(67%)	3
Country Drivers and Riders						
<0.05	76	63	90	13	(21%)	78
[a] at 0.05 & above	20	26	32	-6	(-23%)	26
% at 0.05 & above	(21%)	(29%)	(26%)			(25%)
[b] >0.15	13	17	20	-4	(-24%)	17
%>0.15	(14%)	(19%)	(16%)			(16%)
[b] as a % of [a]	(65%)	(65%)	(63%)			(64%)
BAC Unknown	7	2	1	5	(250%)	5
Victorian Total Drivers and Riders						
<0.05	131	126	153	5	(4%)	140
[a] at 0.05 & above	41	43	57	-2	(-5%)	47
% at 0.05 & above	(24%)	(25%)	(27%)			(25%)
[b] >0.15	21	27	32	-6	(-22%)	26
%>0.15	(12%)	(16%)	(15%)			(14%)
[b] as a % of [a]	(51%)	(63%)	(56%)			(54%)
BAC Unknown	12	5	2	7	(140%)	7
Victorian Total Pedestrians						
<0.05	32	35	38	-3	(-9%)	33
[a] at 0.05 & above	8	21	9	-13	(-62%)	14
% at 0.05 & above	(20%)	(38%)	(19%)			(30%)
[b] >0.15	3	10	8	-7	(-70%)	9
%>0.15	(8%)	(18%)	(17%)			(19%)
[b] as a % of [a]	(38%)	(48%)	(89%)			(62%)
BAC Unknown	6	4	2	2	(50%)	4

The National Picture

State	Fatalities (12 months to December)					2012 v 2011
	2012	2011	2010	2009		
NSW	370	364	405	448	6	(2%)
VIC	279	287	288	283	-8	(-3%)
QLD	279	269	249	347	10	(4%)
SA	94	103	118	120	-9	(-9%)
WA	187	179	193	182	8	(4%)
TAS	33	24	31	63	9	(38%)
NT	48	45	50	40	3	(7%)
ACT	12	6	19	11	6	(100%)
AUST TOTAL	1,302	1,277	1,353	1,494	25	(2%)
AUST minus VIC	1,023	990	1,065	1,211	33	(3%)

State	Fatalities per 10,000 registered vehicles (12 months to December)			Fatalities per 100,000 population (12 months to December)		
	2012	2011	2010	2012	2011	2010
NSW	0.75	0.76	0.86	5.08	5.05	5.67
VIC	0.65	0.68	0.70	4.96	5.19	5.27
QLD	0.79	0.78	0.74	6.12	6.01	5.63
SA	0.73	0.81	0.95	5.68	6.29	7.24
WA	0.93	0.92	1.03	7.69	7.61	8.41
TAS	0.75	0.57	0.75	6.45	4.69	6.10
NT	3.36	3.24	3.68	20.44	19.45	21.71
ACT	0.44	0.23	0.74	3.20	1.63	5.27
AUST TOTAL	0.77	0.77	0.84	5.77	5.72	6.13
AUST minus VIC	0.81	0.81	0.89	6.02	5.90	6.42



Victoria v Australia – 12 Month Moving Fatality Rate

Booze-Bus Random Breath Testing*

12 months to October 2012 (monthly totals)

	2011		2012									
	Nov	Dec	Jan	Feb	Mar	Apr	May	Jun	Jul	Aug	Sep	Oct
Melbourne	84,800	97,551	86,442	83,625	87,082	89,651	91,052	79,523	77,942	80,396	97,391	91,425
Country	13,085	19,863	9,042	10,529	12,033	7,426	7,767	7,285	4,486	7,077	4,599	8,763
Vic Total	97,885	117,414	95,484	94,154	99,115	97,077	98,819	86,808	82,428	87,473	101,990	100,188

12 months to June 2012 vs previous 12 months

	2012	2011	2010	2012 v 2011	2011 v 2009
Melbourne	1,033,696	924,897	1,059,308	108,799 (12%)	-25,612 (-2%)
Country	119,149	160,608	198,830	-41,459 (-26%)	-79,681 (-40%)
Vic Total	1,152,845	1,085,505	1,258,138	67,340 (6%)	-105,293 (-8%)

*Due to police industrial action, reliable random breath testing data is not available from May to October 2011. For the rolling 12 month totals, 2010 data has been used as a substitute in the relevant months.

Mobile Safety Camera Data

Speed Infringements Issued from Mobile Cameras (monthly totals)

Monthly Average = 45,426

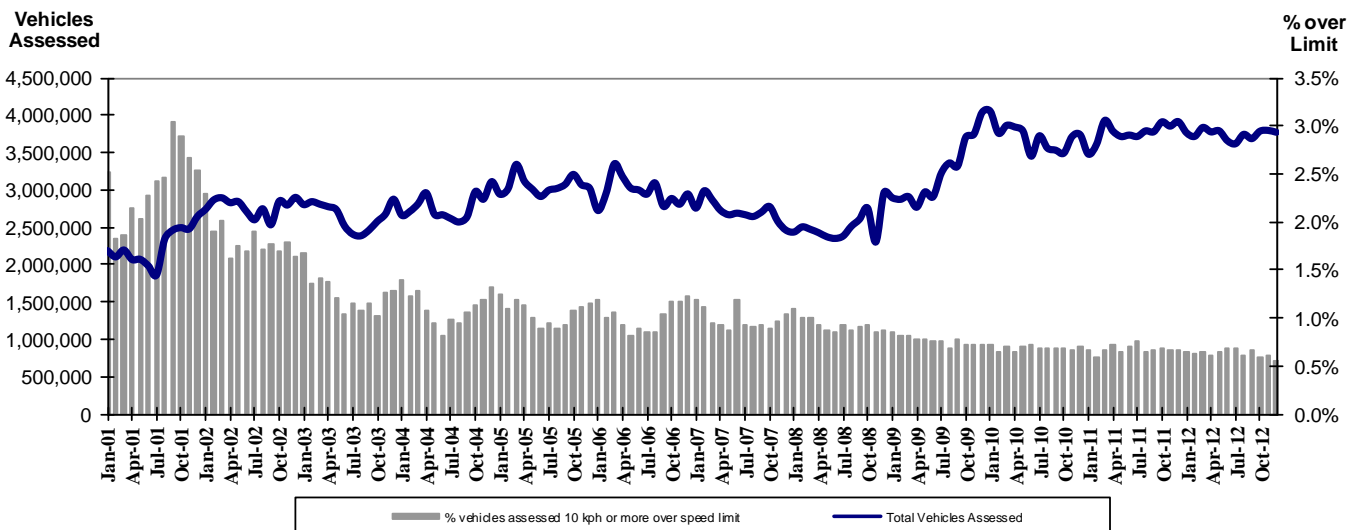
2012											
Jan	Feb	Mar	Apr	May	Jun	Jul	Aug	Sep	Oct	Nov	Dec
54,857	43,904	50,948	42,935	50,292	45,729	48,023	45,032	42,429	45,757	45,777	29,434

Excessive Speed Infringements (ESI) Issued from Mobile Cameras (monthly totals)

Monthly Average = 368

2012											
Jan	Feb	Mar	Apr	May	Jun	Jul	Aug	Sep	Oct	Nov	Dec
487	340	435	374	360	341	352	368	353	396	356	256

Notes: An ESI is defined as 25km/h over the speed limit except in a 110km/h zone where it is 20km/h over the limit.



Mobile Safety Cameras – Vehicles assessed and percentage of vehicles assessed 10km/h or more over speed limit per month

Explanations and References

Hi-AlcTime is those times of the day and week (*shaded* in the table below) when casualty crashes are ten times more likely to involve alcohol than casualty crashes at other (Lo-AlcTime) times.

	12am - 6am	6am - 8am	8am - 10am	10am - 2pm	2pm - 4pm	4pm - 6pm	6pm - 12pm
Monday							
Tuesday							
Wednesday							
Thursday							
Friday							
Saturday							
Sunday							

Police Service Areas align with Local Government Areas. Most Police Service Areas are equivalent to a single Local Government Area, while the remainder comprise two or three Local Government Areas.

Police Service Area	Local Government Area(s)	Police Service Area	Local Government Area(s)
BALLARAT	BALLARAT, PYRENEES	MAROONDAH	MAROONDAH
BANYULE	BANYULE	MELBOURNE	MELBOURNE
BASS COAST	BASS COAST, SOUTH GIPPSLAND	MELTON	MELTON
BAW BAW	BAWBAW	MILDURA	MILDURA
BENALLA	BENALLA, MANSFIELD, MURRINDINDI	MITCHELL	MITCHELL, STRATHBOGIE
BENDIGO	GREATER BENDIGO	MONASH	MONASH
BOROONDARA	BOROONDARA	MOONEE VALLEY	MOONEE VALLEY
BRIMBANK	BRIMBANK	MOORABOOL	GOLDEN PLAINS, HEPBURN, MOORABOOL
CAMPASPE	CAMPASPE	MORELAND	MORELAND
CARDINIA	CARDINIA	MORNINGTON PENINSULA	MORNINGTON PENINSULA
CASEY	CASEY	NILLUMBIK	NILLUMBIK
CENTRAL GOLDFIELDS	CENTRAL GOLDFIELDS, LODDON	NORTHERN GRAMPIANS	ARARAT, NORTHERN GRAMPIANS, YARRIAMIACK
GREATER DANDENONG	GREATER DANDENONG	PORT PHILLIP	PORT PHILLIP
DAREBIN	DAREBIN	SHEPPARTON	GREATER SHEPPARTON
EAST GIPPSLAND	EAST GIPPSLAND	SOUTHERN GRAMPIANS	GLENELG, SOUTHERN GRAMPIANS
FRANKSTON	FRANKSTON	STONNINGTON	STONNINGTON
GEELONG	GREATER GEELONG, QUEENSCLIFF	SURFCOAST	SURFCOAST, COLAC OTWAY
GLENEIRA	GLENEIRA, BAYSIDE	SWANHILL	BULOKE, GANNAWARRA, SWAN HILL
HOBSONS BAY	HOBSONSBAY	WANGARATTA	ALPINE, MOIRA, WANGARATTA
HORSHAM	HINDMARSH, HORSHAM, WESTWIMMERA	WARRNAMBOOL	CORANGAMITE, MOYNE, WARRNAMBOOL
HUME	HUME	WELLINGTON	WELLINGTON
KINGSTON	KINGSTON	WHITEHORSE	WHITEHORSE
KNOX	KNOX	WHITTLESEA	WHITTLESEA
LATROBE	LATROBE	WODONGA	INDIGO, TOWONG, WODONGA
MACEDON RANGES	MOUNT ALEXANDER, MACEDON RANGES	WYNDHAM	WYNDHAM
MANNINGHAM	MANNINGHAM	YARRA	YARRA
MARIBYRNONG	MARIBYRNONG	YARRA RANGES	YARRA RANGES

Useful Internet Sites

TAC Sites

- TAC Safety (Road Safety) www.tacsafety.com.au
- TAC How safe is your car www.howsafeisyourcar.com.au
- TAC Learners Log www.learnerslog.com.au
- TAC Motorcycle Safety Website www.spokes.com.au
- TAC Corporate site www.tac.vic.gov.au

Victorian Sites:

- VicRoads www.vicroads.vic.gov.au
- Victoria Police www.police.vic.gov.au
- Parliamentary Road Safety Committee www.parliament.vic.gov.au/rsc/
- ARRB Transport Research www.arrb.com.au
- RACV www.racv.com.au
- Monash University Accident Research Centre www.monash.edu.au/muarc
- Roadsafe www.roadsafe.org.au
- Cameras Save Lives www.camerassavelives.vic.gov.au

National and Interstate Sites:

- Australian Transport Safety Bureau www.atsb.gov.au
- Roads and Traffic Authority (NSW) www.rta.nsw.gov.au
- Queensland Transport - Road Safety transport.qld.gov.au/Home/Safety/Road
- Department of Transport (SA) www.transport.sa.gov.au/index.htm
- Main Roads Western Australia - Road Safety www.mrwa.wa.gov.au

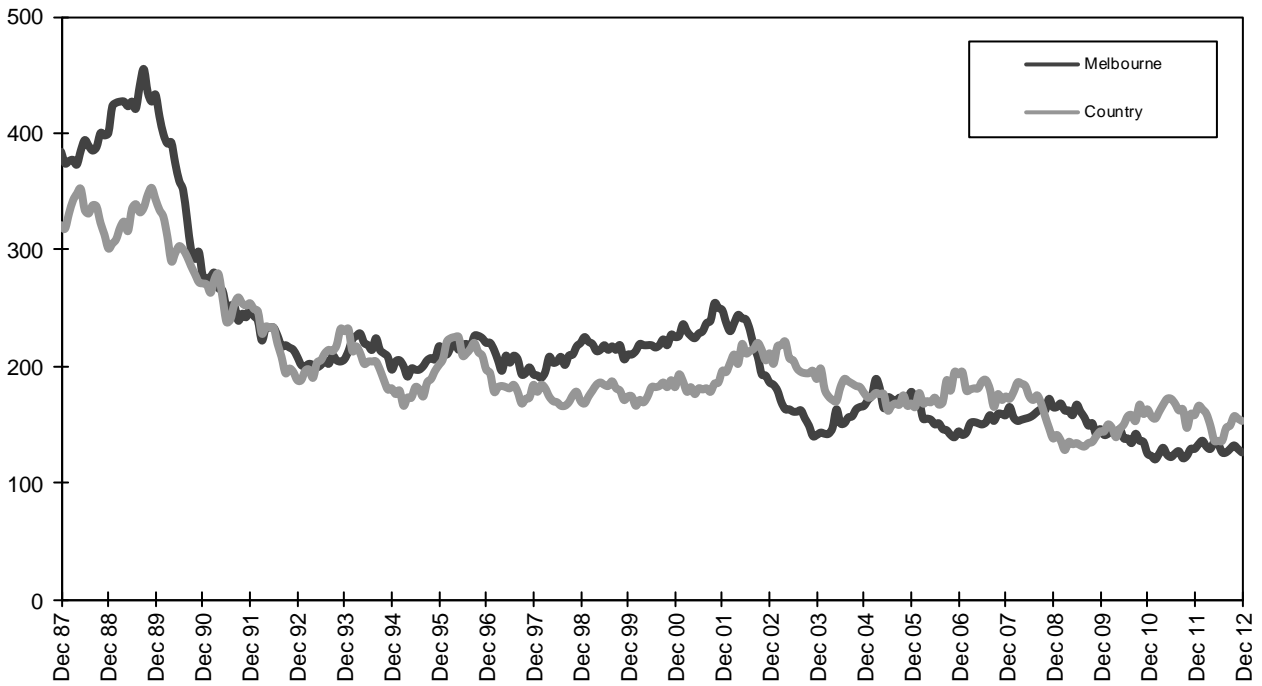
International Sites:

- National Highway Traffic Safety Admin (USA) www.nhtsa.dot.gov
- Swedish Road and Transport Institute (VTI) www.vti.se
- SWOV Institute for Road Safety Research www.swov.nl

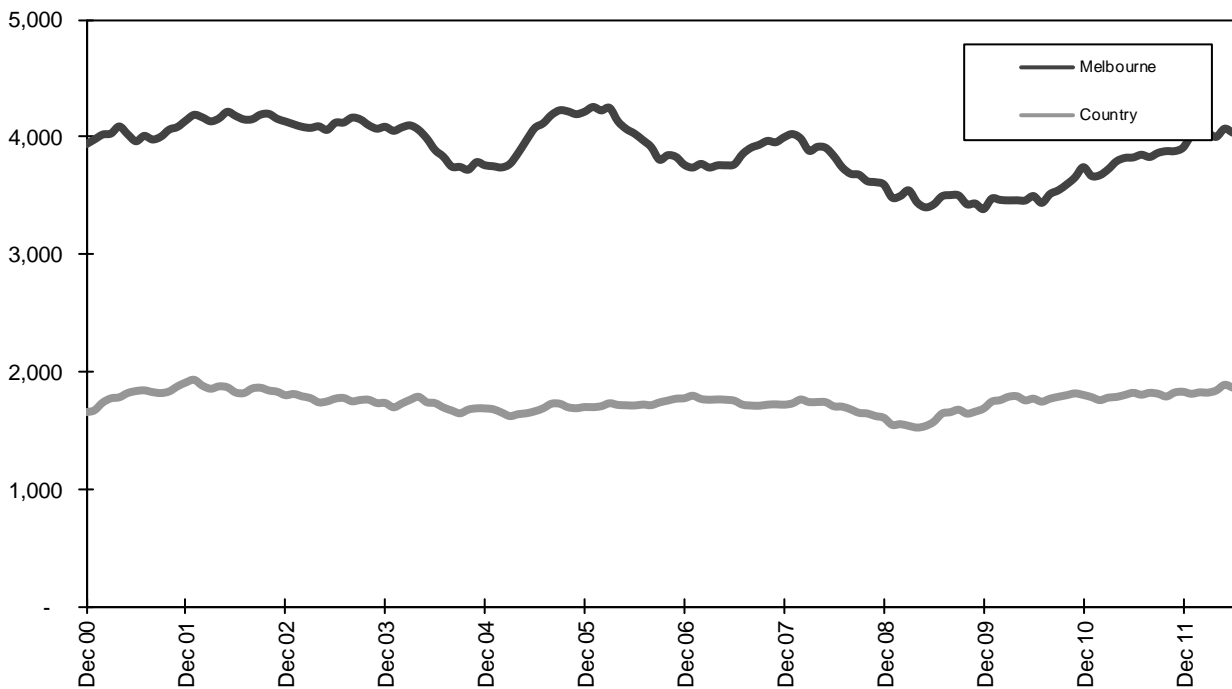
Related Sites:

- Australian Drug Foundation www.adf.org.au
- Amy Gillett Foundation www.amygillett.org.au

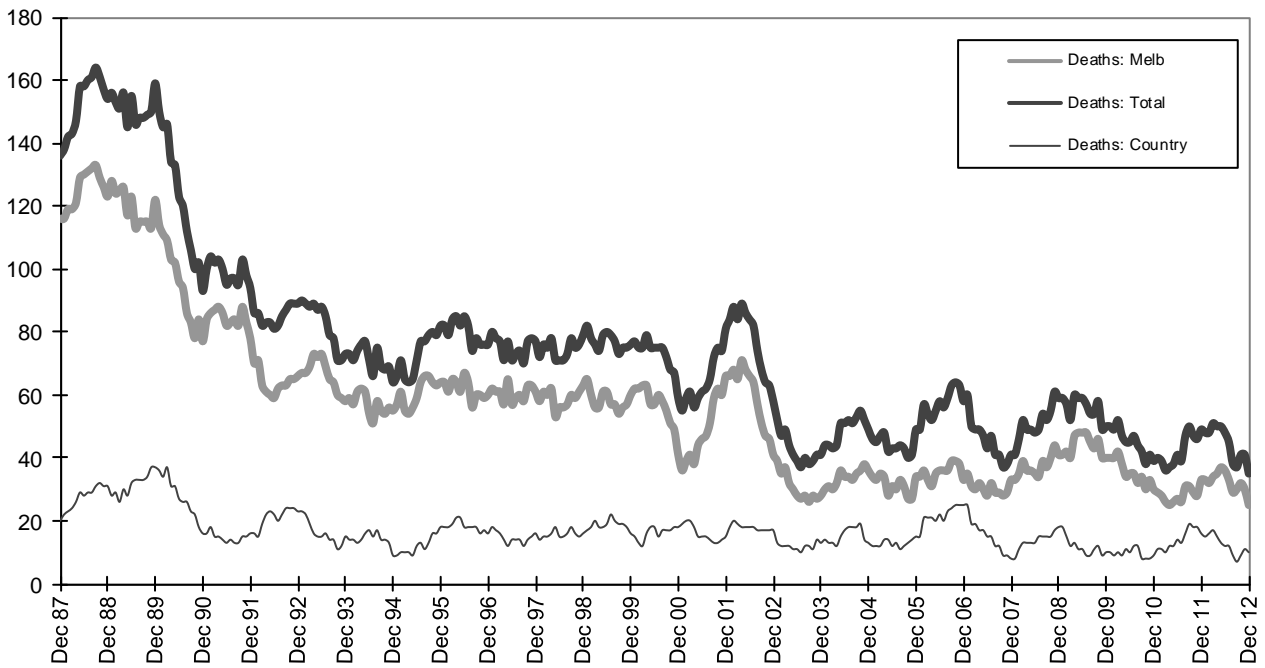
Figures



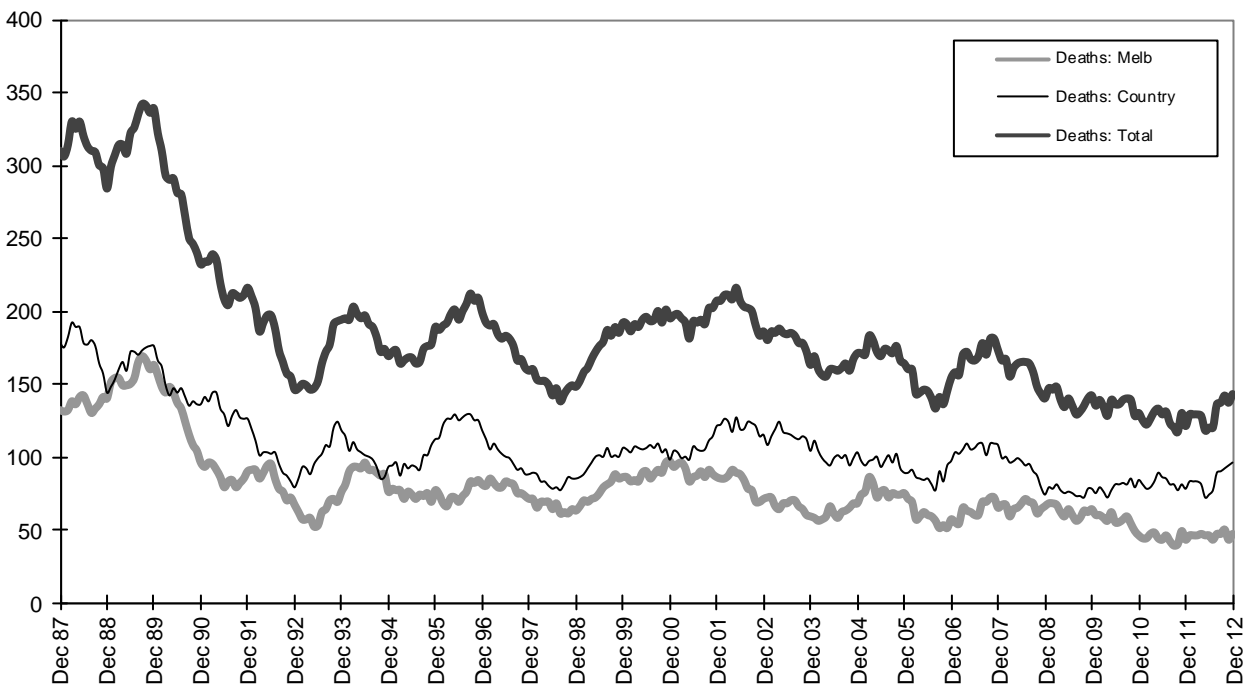
Graph 1a - Melbourne/country fatalities



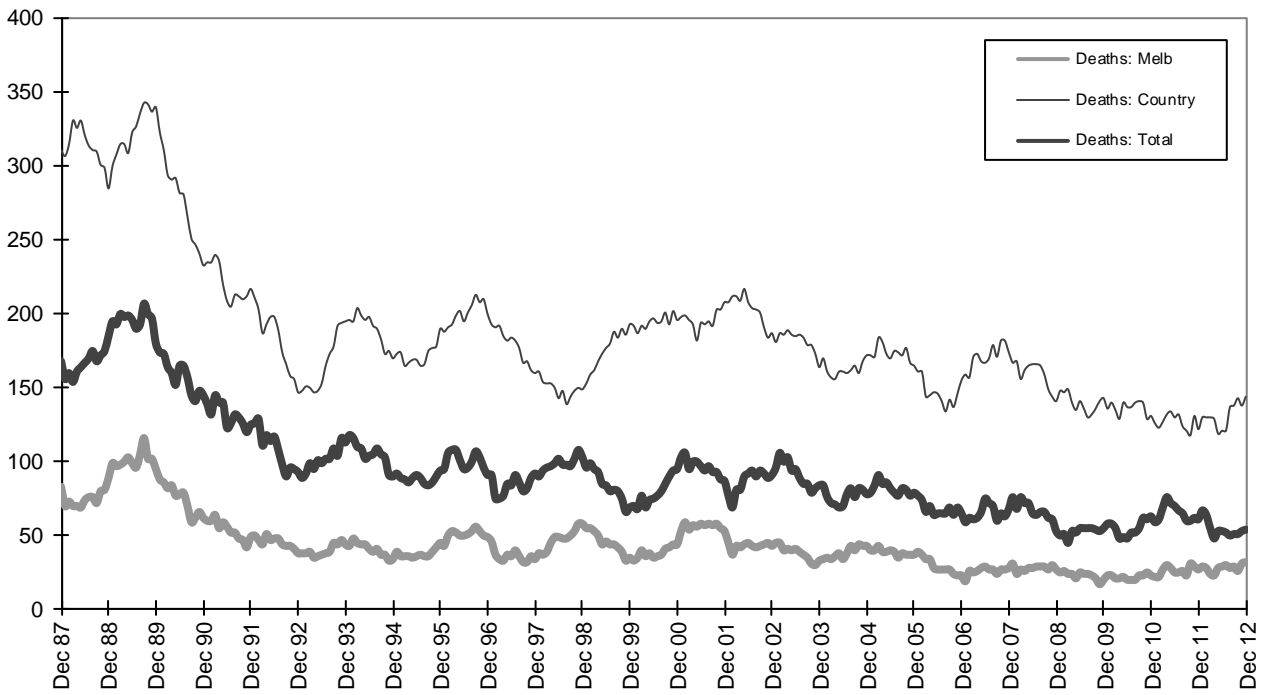
Graph 1b - Melbourne/country Claims involving an acute hospital admission



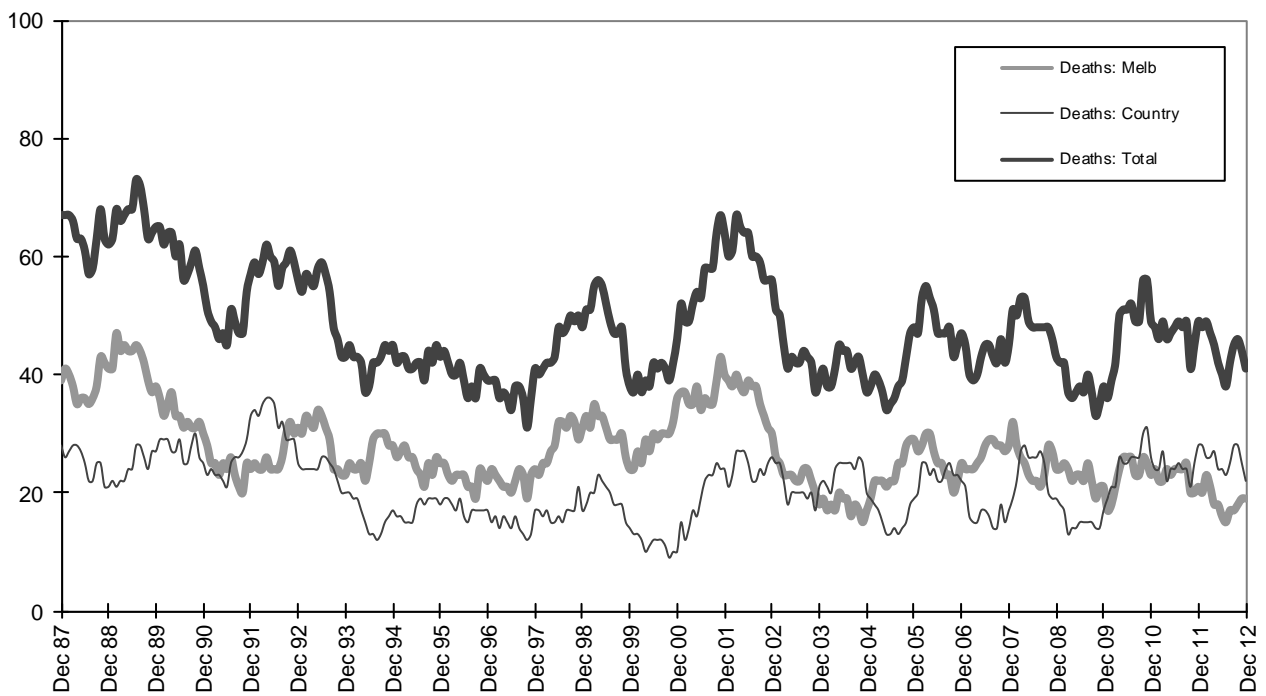
Graph 2a - Pedestrian fatalities (Melbourne/country)



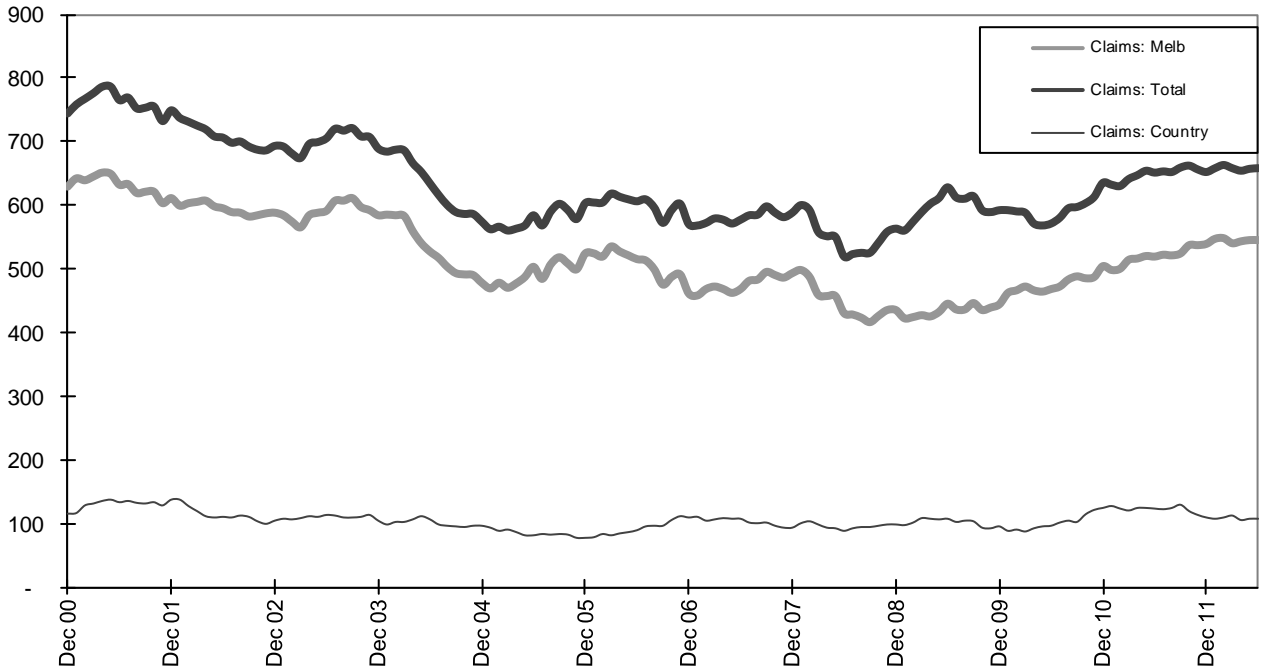
Graph 2b - Driver fatalities (Melbourne/country)



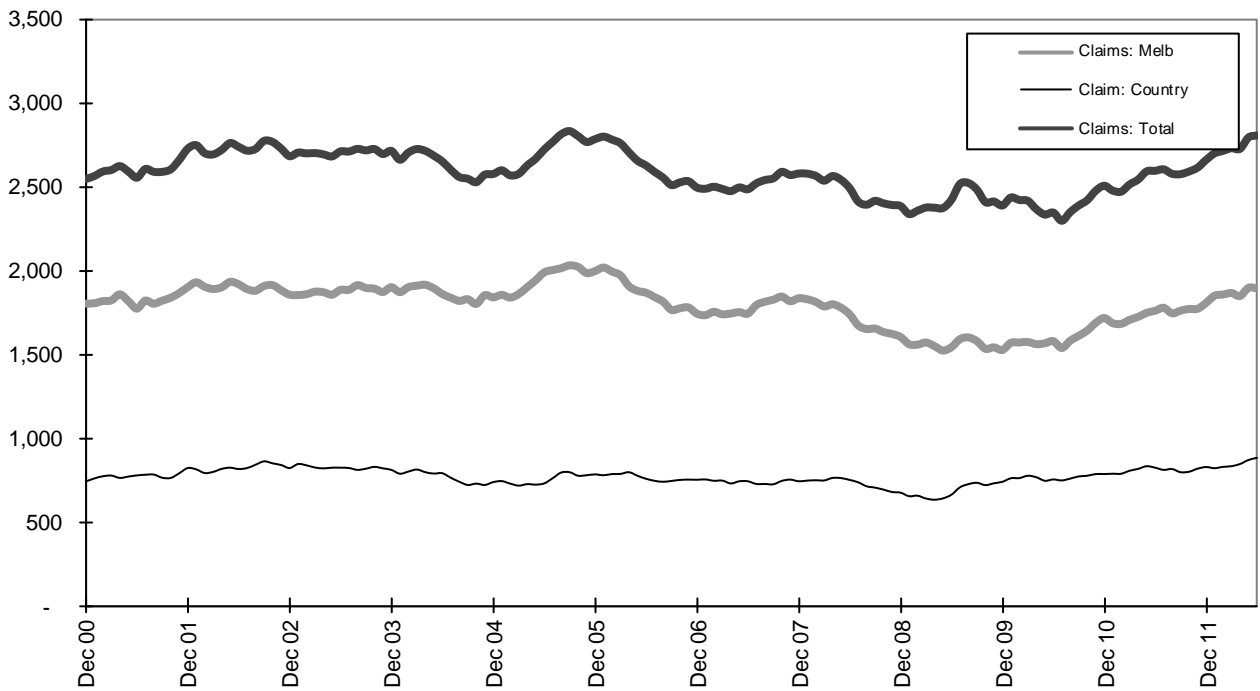
Graph 2c - Passenger fatalities (Melbourne/country)



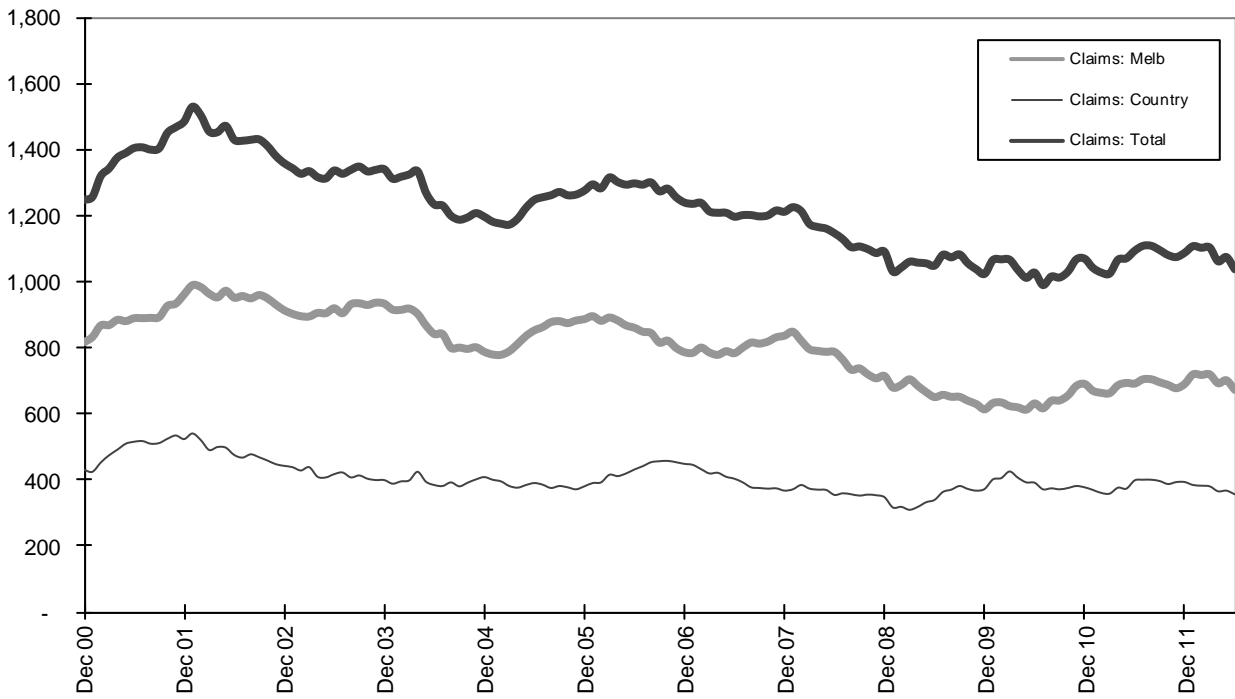
Graph 2d - Motorcyclist fatalities (Melbourne/country)



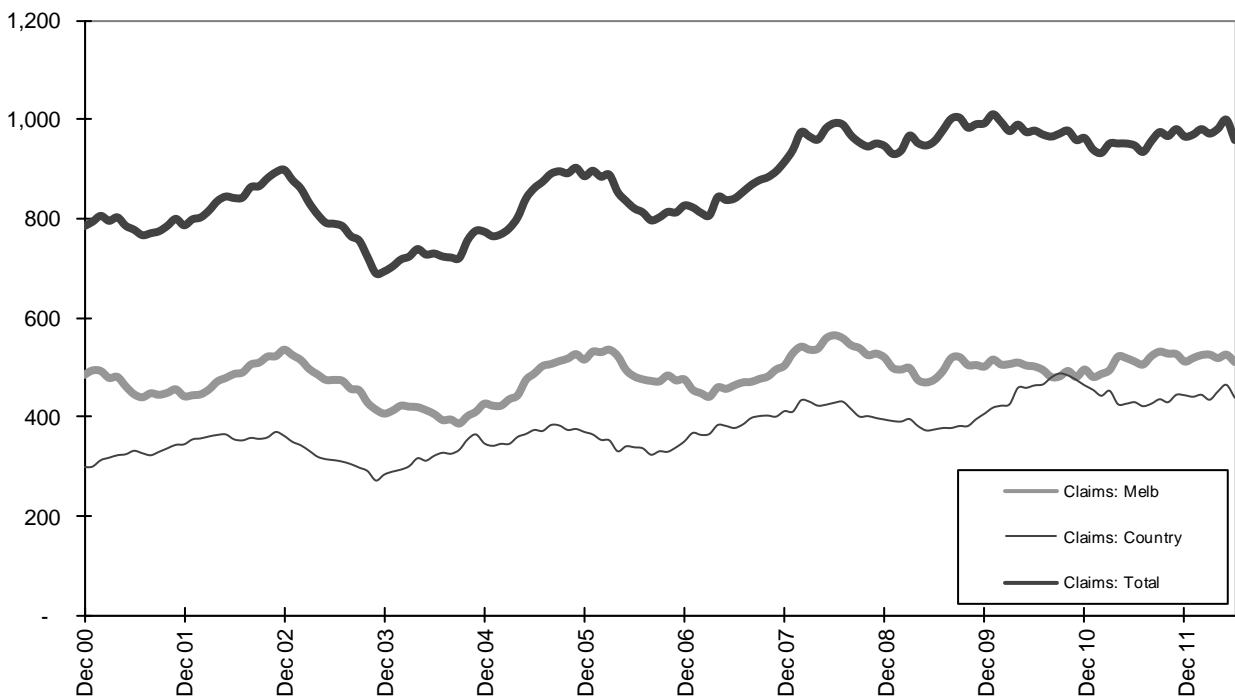
Graph 3a - Pedestrian Claims involving an acute hospital admission (Melbourne/country)



Graph 3b - Driver Claims involving an acute hospital admission (Melbourne/country)



Graph 3c - Passenger Claims involving an acute hospital admission (Melbourne/country)



Graph 3d - Motorcyclist Claims involving an acute hospital admission (Melbourne/country)