

ROAD SAFETY STATISTICAL SUMMARY

March 2016



TRANSPORT
ACCIDENT
COMMISSION

60 Brougham Street
Geelong Vic 3220
PO Box 742
Geelong Vic 3220
Ausdoc DX 216079 Geelong

Telephone 1300 654 329
STD Toll Free 1800 332 556
Fax: 03 9656 9300
www.tac.vic.gov.au
ABN 22 033 947 623

Contents

Status Report.....	4
Fatalities.....	4
Claims involving an acute hospital admission*	5
Fatalities: 12 months to March 2016	6
Claims involving acute hospitalisation over 14 days: 12 months to September 2015 (claim acceptance date)	8
Claims involving an acute hospital admission: 12 months to September 2015 (claim acceptance date)	10
Fatalities: Victorian monthly totals since 1951	12
Fatalities by Week (2009 to 2016).....	13
The National Picture	14
Booze-Bus Random Breath Testing	15
Mobile Safety Camera Data	15
Explanations and References	16
Useful Internet Sites	17
Figures	18

Note about the data in this report

- All data provided in this report is the data most recently available at time of production. Fatalities, breath-test data and safety camera data are updated to the end of report month. A 6-month lag applies to TAC claims data.
- Reported data will have one extra day of exposure for leap years.
- Data is subject to revision as additional information about known accidents/claims is received, and as new accident/claim reports are received and processed.

*An acute hospital admission refers to a hospital admission that occurred within 7 days of accident.

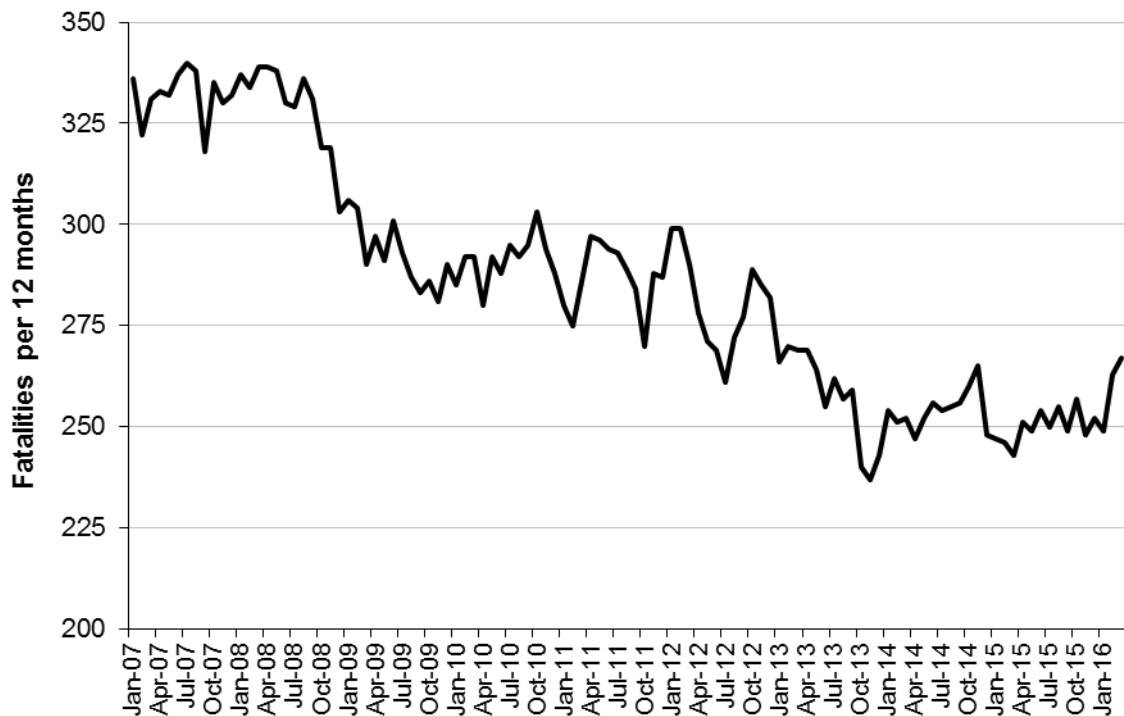
Status Report

Fatalities

- The rolling 12 month number of road fatalities in March 2016 stands at 268. The number of fatalities in 2015 stood at 243 (10.3% increase).
- 26 people were fatally injured in March 2016 on Victorian roads. This compares to 22 in March 2015.

Fatalities (rolling 12 month, to end March 2016)

Category	2016	2015	2014	2016 v 2015		2016 v 2014		5 Year Av
Fatal Injuries (Rolling 12 Month Total)								
Fatal (to March)	268	243	252	+25	(+10.3%)	+16	(+6%)	264
per 10,000 veh	0.58	0.53	0.56	+0.05	(+9%)	+0.02	(+4%)	0.59
per 100,000 pop	4.49	4.14	4.36	+0.35	(+8%)	+0.13	(+3%)	4.59
Accidents (Rolling 12 Month Total)								
Fatal (to March)	251	223	224	+28	(+13%)	+27	(+12%)	242
per 10,000 veh	0.54	0.49	0.50	+0.05	(+10%)	+0.04	(+8%)	0.52
per 100,000 pop	4.21	3.80	3.89	0.41	(+11%)	+0.32	(+8%)	4.02

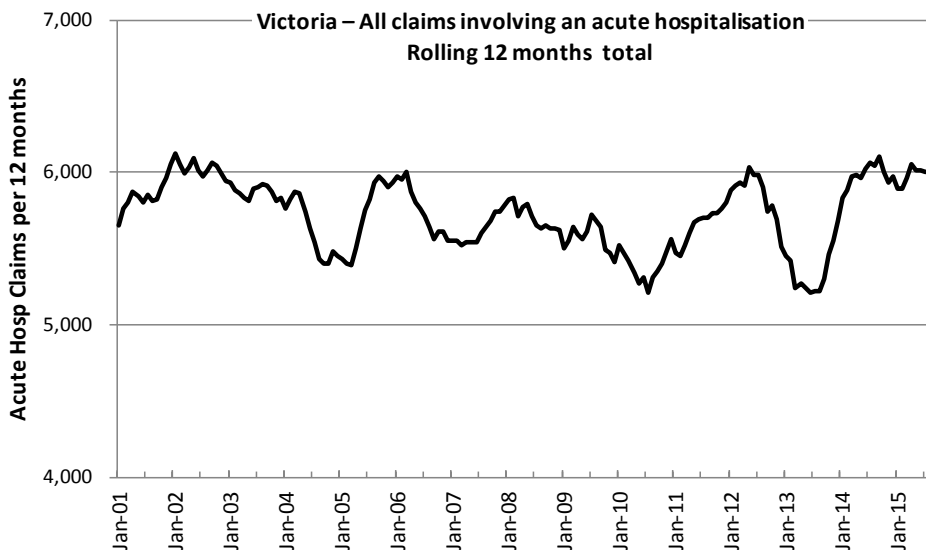
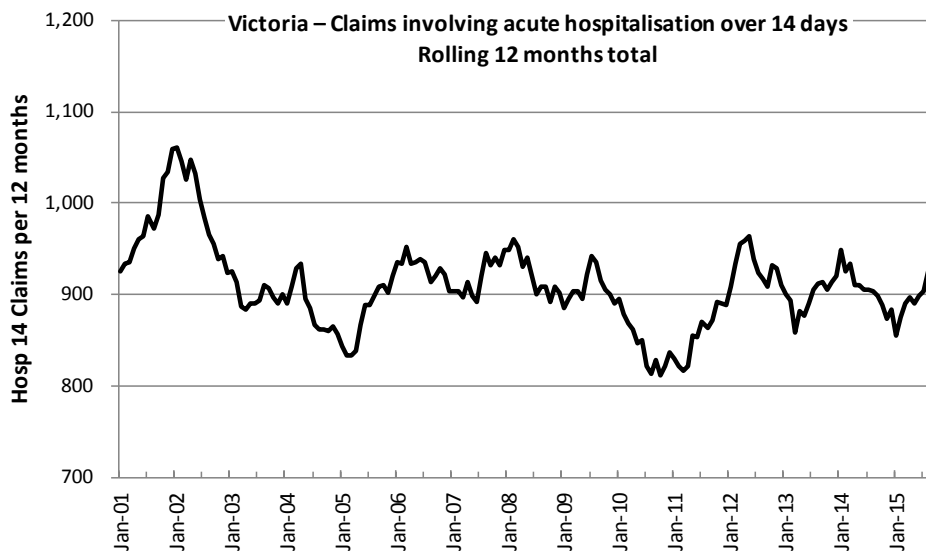


Victoria - Fatalities, rolling 12 months total

Claims involving an acute hospital admission*

(by claim acceptance date – rolling 12 month, to midnight 30 September 2015)

Category	2015	2014	2013	2015 v 2014		2015 v 2013		5 Year Av
Claims involving an acute hospitalisation over 14 days (Rolling 12 Month Total)								
Claims (to September)	935	899	914	+36	(+4%)	+21	(+2%)	906
per 100,000 pop	15.8	15.5	16.0	+0.3	(+2%)	-0.2	(-1%)	15.8
per 10,000 veh	2.0	2.0	2.1	0.0	(+0%)	-0.1	(-5%)	2.1
All claims involving an acute hospitalisation (Rolling 12 Month Total)								
Claims (to September)	6,023	6,104	5,306	-81	(-1%)	+717	(+14%)	5,782
per 100,000 pop	101.8	105.0	92.9	-3.2	(-3%)	+8.9	(+10%)	101.3
per 10,000 veh	13.1	13.6	12.1	-0.5	(-4%)	+1.0	(+8%)	13.2



*An acute hospital admission refers to a hospital admission that occurred within 7 days of accident.

Fatalities: 12 months to March 2016

Category	2016	2015	2014		2016 v 2015		2016 v 2014	5 Year Av
Overview								
Fatalities	268	243	252	+25	(+10%)	+16	(+6%)	264
Accidents	251	223	224	+28	(+13%)	+27	(+12%)	242
Sex								
Female	77	61	85	+16	(+26%)	-8	(-9%)	77
Male	190	182	167	+8	(+4%)	+23	(+14%)	187
Roaduser								
Bicyclist	12	8	8	+4	(+50%)	+4	(+50%)	8
Driver	126	116	118	10	(+9%)	+8	(+7%)	126
Motorcyclist	44	31	36	+13	(+42%)	+8	(+22%)	40
Passenger	55	42	52	+13	(+31%)	+3	(+6%)	50
Pedestrian	31	46	38	-15	(-33%)	-7	(-18%)	39
Location								
Melbourne	130	107	113	+23	(+21%)	+17	(+15%)	119
Rural Victoria	138	136	139	+2	(+1%)	-1	(-1%)	146
Agegroup								
0-4	2	4	1	-2	(-50%)	+1	(+100%)	3
5-15	4	5	8	-1	(-20%)	-4	(-50%)	7
16-17	16	6	3	+10	(+167%)	+13	(+433%)	8
18-20	32	12	18	+20	(+167%)	+14	(+78%)	24
21-25	17	34	20	-17	(-50%)	-3	(-15%)	28
26-29	20	23	16	-3	(-13%)	+4	(+25%)	19
30-39	29	35	33	-6	(-17%)	-4	(-12%)	36
40-49	35	29	34	+6	(+21%)	+1	(+3%)	33
50-59	32	28	30	+4	(+14%)	+2	(+7%)	31
60-69	28	30	28	-2	(-7%)	0	(0%)	29
70+	53	37	60	+16	(+43%)	-7	(-12%)	47
Alcime								
High (Melb)	72	57	59	+15	(+26%)	+13	(+22%)	63
High (Rural)	66	58	49	+8	(+14%)	+17	(+35%)	65
High (Vic)	138	115	108	+23	(+20%)	+30	(+28%)	128
Low (Melb)	58	50	54	+8	(+16%)	+4	(+7%)	56
Low (Rural)	72	78	90	-6	(-8%)	-18	(-20%)	81
Low (Vic)	130	128	144	+2	(+2%)	-14	(-10%)	137
Accident Type								
Intersection								
Adjacent direction	35	25	42	+10	(+40%)	-7	(-17%)	32
Opposing direction	10	10	3	0	(0%)	+7	(+233%)	6
Mid-block/other								
Head on	47	30	47	+17	(+57%)	0	(0%)	41
Same direction	17	11	12	+6	(+55%)	+5	(+42%)	14
Manoeuvre/o'taking	19	13	10	+6	(+46%)	+9	(+90%)	14
On path	4	10	1	-6	(-60%)	+3	(+300%)	5
Single vehicle	103	94	91	+9	(+10%)	+12	(+13%)	106
Other (incl peds)	33	50	46	-17	(-34%)	-13	(-28%)	45

Fatalities: 12 months to March 2016 – Continued

Category	2016	2015	2014	2016 v 2015	2016 v 2014	5 Year Av
Police Service Area (based on Local Government Area (see p.13))						
BALLARAT	3	3	7	0	(0%) -4	(-57%) 4
BANYULE	2	1	3	+1	(+100%) -1	(-33%) 4
BASS COAST	6	6	9	0	(0%) -3	(-33%) 2
BAW BAW	2	4	5	-2	(-50%) -3	(-60%) 7
BENALLA	11	9	12	+2	(+22%) -1	(-8%) 4
BENDIGO	4	7	1	-3	(-43%) +3	(+300%) 9
BOROONDARA	2	2	6	0	(0%) -4	(-67%) 6
BRIMBANK	8	4	5	+4	(+100%) +3	(+60%) 3
CAMPASPE	4	4	5	0	(0%) -1	(-20%) 8
CARDINIA	11	3	6	+8	(+267%) +5	(+83%) 5
CASEY	7	5	5	+2	(+40%) +2	(+40%) 7
CENTRAL GOLDFIELDS	3	0	5	+3		(-40%) 6
DAREBIN	5	0	3	+5		(+67%) 2
EAST GIPPSLAND	9	7	2	+2	(+29%) +7	(+350%) 3
FRANKSTON	3	5	1	-2	(-40%) +2	(+200%) 6
GEELONG	4	6	4	-2	(-33%) 0	(0%) 3
GLEN EIRA	2	5	5	-3	(-60%) -3	(-60%) 8
GREATER DANDENONG	7	5	2	+2	(+40%) +5	(+250%) 5
HOBSONS BAY	5	1	3	+4	(+400%) +2	(+67%) 5
HORSHAM	6	2	4	+4	(+200%) +2	(+50%) 2
HUME	6	5	4	+1	(+20%) +2	(+50%) 4
KINGSTON	4	4	7	0	(0%) -3	(-43%) 6
KNOX	6	4	5	+2	(+50%) +1	(+20%) 5
LA TROBE	7	5	3	+2	(+40%) +4	(+133%) 4
MACEDON RANGES	8	8	8	0	(0%) 0	(0%) 6
MANNINGHAM	1	1	0	0	(0%) +1	7
MARIBYRNONG	4	0	3	+4		(+33%) 1
MAROONDAH	1	2	0	-1	(-50%) +1	2
MELBOURNE	1	8	3	-7	(-88%) -2	(-67%) 2
MELTON	5	6	9	-1	(-17%) -4	(-44%) 4
MILDURA	5	1	6	+4	(+400%) -1	(-17%) 6
MITCHELL	9	7	6	+2	(+29%) +3	(+50%) 3
MONASH	4	1	4	+3	(+300%) 0	(0%) 8
MOONEE VALLEY	0	4	4	-4	(-100%) -4	(-100%) 3
MOORABOOL	8	5	8	+3	(+60%) 0	(0%) 2
MORELAND	1	7	2	-6	(-86%) -1	(-50%) 8
MORNINGTON PENINSULA	14	8	5	+6	(+75%) +9	(+180%) 3
NILLUMBIK	2	2	0	0	(0%) +2	7
NORTHERN GRAMPPIANS	4	3	8	+1	(+33%) -4	(-50%) 2
PORT PHILLIP	2	1	4	+1	(+100%) -2	(-50%) 5
SHEPPARTON	7	4	3	+3	(+75%) +4	(+133%) 2
SOUTHERN GRAMPPIANS	4	10	0	-6	(-60%) +4	7
STONNINGTON	2	4	4	-2	(-50%) -2	(-50%) 5
SURF COAST	6	6	5	0	(0%) +1	(+20%) 3
SWAN HILL	4	4	9	0	(0%) -5	(-56%) 6
WANGARATTA	10	9	8	+1	(+11%) +2	(+25%) 6
WARRNAMBOOL	5	14	10	-9	(-64%) -5	(-50%) 10
WELLINGTON	3	4	6	-1	(-25%) -3	(-50%) 8
WHITEHORSE	2	5	2	-3	(-60%) 0	(0%) 4
WHITTLESEA	3	5	4	-2	(-40%) -1	(-25%) 3
WODONGA	4	8	5	-4	(-50%) -1	(-20%) 5
WYNDHAM	8	5	2	+3	(+60%) +6	(+300%) 5
YARRA	2	1	0	+1	(+100%) +2	6
YARRA RANGES	12	3	12	+9	(+300%) 0	(0%) 1

Claims involving acute hospitalisation over 14 days: 12 months to September 2015 (claim acceptance date)

Category	2015	2014	2013	2015 v 2014		2015 v 2013		5 Year Av
Overview								
Claims	935	899	914	+36	(+4%)	+21	(+2%)	906
Sex								
Female	405	359	389	+46	(+13%)	+16	(+4%)	377
Male	529	538	523	-9	(-2%)	+6	(+1%)	528
Roaduser								
Driver	347	376	380	-29	(-8%)	-33	(-9%)	528
Passenger	146	132	150	+14	(+11%)	-4	(-3%)	357
Motorcyclist	187	158	135	+29	(+18%)	+52	(+39%)	144
Pedestrian	185	176	201	+9	(+5%)	-16	(-8%)	161
Cyclist	40	35	28	+5	(+14%)	+12	(+43%)	185
Train/Tram	9	9	4	0	(0%)	+5	(+125%)	37
Location								
Melbourne	621	544	598	+77	(+14%)	+23	(+4%)	584
Rural Victoria	290	333	313	-43	(-13%)	-23	(-7%)	310
Agegroup								
0-4	4	1	2	+3	(+300%)	+2	(+100%)	3
5-15	18	15	7	+3	(+20%)	+11	(+157%)	14
16-17	13	12	16	+1	(+8%)	-3	(-19%)	17
18-20	44	53	70	-9	(-17%)	-26	(-37%)	54
21-25	81	86	77	-5	(-6%)	+4	(+5%)	83
26-29	57	49	39	+8	(+16%)	+18	(+46%)	52
30-39	98	111	114	-13	(-12%)	-16	(-14%)	109
40-49	120	112	116	+8	(+7%)	+4	(+3%)	117
50-59	125	112	99	+13	(+12%)	+26	(+26%)	108
60-69	106	97	112	+9	(+9%)	-6	(-5%)	107
70+	269	250	261	+19	(+8%)	+8	(+3%)	243
Alcetime								
High (Melb)	243	210	270	+33	(+16%)	-27	(-10%)	246
High (Rural)	110	133	115	-23	(-17%)	-5	(-4%)	122
High (Vic)	353	343	385	+10	(+3%)	-32	(-8%)	368
Low (Melb)	378	334	328	+44	(+13%)	+50	(+15%)	338
Low (Rural)	180	200	198	-20	(-10%)	-18	(-9%)	188
Low (Vic)	558	534	526	+24	(+4%)	+32	(+6%)	526
Accident Type								
Intersection								
Adjacent direction	102	98	136	+4	(+4%)	-34	(-25%)	113
Opposing direction	61	60	65	+1	(+2%)	-4	(-6%)	63
Mid-block/other								
Head on	83	96	74	-13	(-14%)	+9	(+12%)	83
Same direction	98	65	81	+33	(+51%)	+17	(+21%)	85
Manoeuvre/o'taking	55	59	59	-4	(-7%)	-4	(-7%)	56
On path	33	27	27	+6	(+22%)	+6	(+22%)	24
Single vehicle	271	275	231	-4	(-1%)	+40	(+17%)	254
Other (incl peds)	232	218	247	+14	(+6%)	-15	(-6%)	227

Note: Excludes rejected claims and claims for interstate crashes.

Claims involving acute hospitalisation over 14 days: 12 months to September 2015 (claim acceptance date) – Continued

Category	2015	2014	2013	2015 v 2013		2015 v 2014		5 Year Av
Police Service Area (based on Local Government Area (see p.13))								
BALLARAT	17	21	17	-4	(-19%)	0	(0%)	17
BANYULE	12	9	10	+3	(+33%)	+2	(+20%)	10
BASS COAST	19	20	13	-1	(-5%)	+6	(+46%)	17
BAW BAW	8	7	9	+1	(+14%)	-1	(-11%)	10
BENALLA	25	20	18	+5	(+25%)	+7	(+39%)	21
BENDIGO	13	12	18	+1	(+8%)	-5	(-28%)	15
BOROONDARA	21	27	20	-6	(-22%)	+1	(+5%)	23
BRIMBANK	34	19	20	+15	(+79%)	+14	(+70%)	25
CAMPASPE	9	8	5	+1	(+13%)	+4	(+80%)	7
CARDINIA	15	11	15	+4	(+36%)	0	(0%)	15
CASEY	33	26	34	+7	(+27%)	-1	(-3%)	28
CENTRAL GOLDFIELDS	2	6	7	-4	(-67%)	-5	(-71%)	5
DAREBIN	15	14	18	+1	(+7%)	-3	(-17%)	16
EAST GIPPSLAND	11	9	5	+2	(+22%)	+6	(+120%)	11
FRANKSTON	20	10	15	+10	(+100%)	+5	(+33%)	16
GEELONG	21	28	37	-7	(-25%)	-16	(-43%)	29
GLEN EIRA	22	26	33	-4	(-15%)	-11	(-33%)	29
GREATER DANDENONG	15	29	31	-14	(-48%)	-16	(-52%)	26
HOBSONS BAY	12	9	10	+3	(+33%)	+2	(+20%)	10
HORSHAM	5	7	5	-2	(-29%)	0	(0%)	7
HUME	35	17	33	+18	(+106%)	+2	(+6%)	27
KINGSTON	25	22	26	+3	(+14%)	-1	(-4%)	22
KNOX	16	18	18	-2	(-11%)	-2	(-11%)	17
LA TROBE	14	7	15	+7	(+100%)	-1	(-7%)	14
MACEDON RANGES	11	27	17	-16	(-59%)	-6	(-35%)	17
MANNINGHAM	11	13	13	-2	(-15%)	-2	(-15%)	14
MARIBY RNONG	12	4	13	+8	(+200%)	-1	(-8%)	12
MAROONDAH	6	5	7	+1	(+20%)	-1	(-14%)	7
MELBOURNE	34	29	32	+5	(+17%)	+2	(+6%)	31
MELTON	21	10	17	+11	(+110%)	+4	(+24%)	15
MILDURA	5	10	6	-5	(-50%)	-1	(-17%)	8
MITCHELL	13	23	18	-10	(-43%)	-5	(-28%)	18
MONASH	25	23	20	+2	(+9%)	+5	(+25%)	22
MOONEE VALLEY	21	22	14	-1	(-5%)	+7	(+50%)	18
MOORABOOL	17	19	18	-2	(-11%)	-1	(-6%)	15
MORELAND	28	22	38	+6	(+27%)	-10	(-26%)	27
MORNINGTON PENINSULA	25	23	29	+2	(+9%)	-4	(-14%)	29
NILLUMBIK	11	6	8	+5	(+83%)	+3	(+38%)	7
NORTHERN GRAMPPIANS	12	13	13	-1	(-8%)	-1	(-8%)	10
PORT PHILLIP	17	20	10	-3	(-15%)	+7	(+70%)	14
SHEPPARTON	9	11	16	-2	(-18%)	-7	(-44%)	11
SOUTHERN GRAMPPIANS	8	12	7	-4	(-33%)	+1	(+14%)	9
STONNINGTON	15	16	12	-1	(-6%)	+3	(+25%)	16
SURF COAST	15	14	11	+1	(+7%)	+4	(+36%)	13
SWAN HILL	11	9	6	+2	(+22%)	+5	(+83%)	8
WANGARATTA	17	11	20	+6	(+55%)	-3	(-15%)	16
WARRNAMBOOL	9	15	14	-6	(-40%)	-5	(-36%)	13
WELLINGTON	8	12	8	-4	(-33%)	0	(0%)	9
WHITEHORSE	18	20	14	-2	(-10%)	+4	(+29%)	19
WHITTLESEA	30	17	23	+13	(+76%)	+7	(+30%)	23
WODONGA	11	12	10	-1	(-8%)	+1	(+10%)	10
WYNDHAM	20	31	20	-11	(-35%)	0	(0%)	22
YARRA	15	13	14	+2	(+15%)	+1	(+7%)	13
YARRA RANGES	37	33	31	+4	(+12%)	+6	(+19%)	32

Note: excludes rejected claims and claims for interstate crashes

Claims involving an acute hospital admission: 12 months to September 2015 (claim acceptance date)

Category	2015	2014	2013	2015 v 2014		2015 v 2013		5 Year Av
Overview								
Claims	6,023	6,104	5,306	-81	(-1%)	+717	(+14%)	5,782
Sex								
Female	2,612	2,568	2,162	+44	(+2%)	+450	(+21%)	2,455
Male	3,410	3,527	3,141	-117	(-3%)	+269	(+9%)	3,324
Roaduser								
Driver	2,750	2,726	2,407	+24	(+1%)	+343	(+14%)	2,644
Passenger	1,005	1,064	903	-59	(-6%)	+102	(+11%)	1,010
Motorcyclist	1,091	1,158	877	-67	(-6%)	+214	(+24%)	994
Pedestrian	607	639	639	-32	(-5%)	-32	(-5%)	638
Cyclist	388	386	367	+2	(+1%)	+21	(+6%)	369
Train/Tram	30	35	27	-5	(-14%)	+3	(+11%)	27
Location								
Melbourne	4,043	4,117	3,593	-74	(-2%)	+450	(+13%)	3,898
Rural Victoria	1,752	1,789	1,687	-37	(-2%)	+65	(+4%)	1,784
Agegroup								
0-4	41	53	49	-12	(-23%)	-8	(-16%)	49
5-15	229	174	178	+55	(+32%)	+51	(+29%)	194
16-17	106	98	91	+8	(+8%)	+15	(+16%)	109
18-20	458	511	479	-53	(-10%)	-21	(-4%)	506
21-25	706	796	630	-90	(-11%)	+76	(+12%)	720
26-29	484	498	387	-14	(-3%)	+97	(+25%)	443
30-39	956	908	786	+48	(+5%)	+170	(+22%)	891
40-49	879	934	795	-55	(-6%)	+84	(+11%)	866
50-59	787	773	651	+14	(+2%)	+136	(+21%)	726
60-69	553	545	484	+8	(+1%)	+69	(+14%)	521
70+	830	813	775	+17	(+2%)	+55	(+7%)	759
Alcime								
High (Melb)	1,681	1,736	1,574	-29	(-3%)	+25	(+2%)	1,705
High (Rural)	711	719	671	-8	(-1%)	+40	(+6%)	740
High (Vic)	2,392	2,455	2,245	-63	(-3%)	+147	(+7%)	2,445
Low (Melb)	2,362	2,381	2,019	-19	(-1%)	+343	(+17%)	2,193
Low (Rural)	1,041	1,070	1,016	-29	(-3%)	+25	(+2%)	1,044
Low (Vic)	3,403	3,451	3,035	-48	(-1%)	+368	(+12%)	3,237
Accident Type								
Intersection								
Adjacent direction	775	800	785	-25	(-3%)	-10	(-1%)	818
Opposing direction	518	518	485	0	(0%)	+33	(+7%)	496
Mid-block/other								
Head on	278	352	282	-74	(-21%)	-4	(-1%)	317
Same direction	911	888	757	+23	(+3%)	+154	(+20%)	883
Manoeuvre/o'taking	353	324	314	+29	(+9%)	+39	(+12%)	326
On path	295	294	314	+1	(+0%)	-19	(-6%)	247
Single vehicle	1,708	1,703	1,433	+5	(+0%)	+275	(+19%)	1,604
Other (incl peds)	1,191	1,224	1,026	-33	(-3%)	+165	(+16%)	1,093

Note: excludes rejected claims and claims for interstate crashes

Claims involving an acute hospital admission: 12 months to September 2015 (claim acceptance date) - Continued

Category	2015	2014	2013	2015 v 2014		2015 v 2013		5 Year Av
Police Service Area (based on Local Government Area (see p.13))								
BALLARAT	81	90	99	-9	(-10%)	-18	(-18%)	95
BANYULE	40	72	51	-32	(-44%)	-11	(-22%)	58
BASS COAST	82	88	77	-6	(-7%)	+5	(+6%)	82
BAW BAW	46	64	59	-18	(-28%)	-13	(-22%)	58
BENALLA	112	107	110	+5	(+5%)	+2	(+2%)	114
BENDIGO	109	76	85	+33	(+43%)	+24	(+28%)	98
BOROONDARA	138	133	147	+5	(+4%)	-9	(-6%)	135
BRIMBANK	143	141	134	+2	(+1%)	+9	(+7%)	150
CAMPASPE	39	36	31	+3	(+8%)	+8	(+26%)	37
CARDINIA	110	114	84	-4	(-4%)	+26	(+31%)	101
CASEY	298	268	214	+30	(+11%)	+84	(+39%)	249
CENTRAL GOLDFIELDS	22	34	25	-12	(-35%)	-3	(-12%)	26
DAREBIN	84	99	94	-15	(-15%)	-10	(-11%)	96
EAST GIPPSLAND	69	48	59	+21	(+44%)	+10	(+17%)	65
FRANKSTON	141	116	106	+25	(+22%)	+35	(+33%)	131
GEELONG	231	221	204	+10	(+5%)	+27	(+13%)	225
GLEN EIRA	176	187	178	-11	(-6%)	-2	(-1%)	177
GREATER DANDENONG	238	289	211	-51	(-18%)	+27	(+13%)	230
HOBSONS BAY	69	64	51	+5	(+8%)	+18	(+35%)	63
HORSHAM	38	33	33	+5	(+15%)	+5	(+15%)	37
HUME	192	181	152	+11	(+6%)	+40	(+26%)	161
KINGSTON	136	155	130	-19	(-12%)	+6	(+5%)	136
KNOX	105	125	82	-20	(-16%)	+23	(+28%)	110
LA TROBE	53	56	69	-3	(-5%)	-16	(-23%)	64
MACEDON RANGES	92	103	93	-11	(-11%)	-1	(-1%)	89
MANNINGHAM	81	60	73	+21	(+35%)	+8	(+11%)	70
MARIBY RNONG	77	63	78	+14	(+22%)	-1	(-1%)	80
MAROONDAH	58	58	48	0	(0%)	+10	(+21%)	60
MELBOURNE	238	246	250	-8	(-3%)	-12	(-5%)	242
MELTON	90	69	79	+21	(+30%)	+11	(+14%)	77
MILDURA	30	43	31	-13	(-30%)	-1	(-3%)	37
MITCHELL	99	105	85	-6	(-6%)	+14	(+16%)	92
MONASH	193	223	154	-30	(-13%)	+39	(+25%)	183
MOONEE VALLEY	118	123	101	-5	(-4%)	+17	(+17%)	112
MOORABOOL	90	106	115	-16	(-15%)	-25	(-22%)	100
MORELAND	151	147	145	+4	(+3%)	+6	(+4%)	146
MORNINGTON PENINSUL	154	153	120	+1	(+1%)	+34	(+28%)	155
NILLUMBIK	45	27	38	+18	(+67%)	+7	(+18%)	39
NORTHERN GRAMPIANS	50	43	43	+7	(+16%)	+7	(+16%)	41
PORT PHILLIP	144	158	104	-14	(-9%)	+40	(+38%)	127
SHEPPARTON	76	67	58	+9	(+13%)	+18	(+31%)	67
SOUTHERN GRAMPIANS	36	53	47	-17	(-32%)	-11	(-23%)	45
STONNINGTON	139	142	135	-3	(-2%)	+4	(+3%)	130
SURF COAST	81	72	52	+9	(+13%)	+29	(+56%)	70
SWAN HILL	39	45	29	-6	(-13%)	+10	(+34%)	37
WANGARATTA	90	100	98	-10	(-10%)	-8	(-8%)	96
WARRNAMBOOL	58	69	66	-11	(-16%)	-8	(-12%)	76
WELLINGTON	70	80	56	-10	(-13%)	+14	(+25%)	73
WHITEHORSE	96	110	105	-14	(-13%)	-9	(-9%)	112
WHITTLESEA	155	137	140	+18	(+13%)	+15	(+11%)	138
WODONGA	59	50	63	+9	(+18%)	-4	(-6%)	62
WYNDHAM	140	186	129	-46	(-25%)	+11	(+9%)	149
YARRA	118	106	98	+12	(+11%)	+20	(+20%)	106
YARRA RANGES	176	165	162	+11	(+7%)	+14	(+9%)	175

Note: excludes rejected claims and claims for interstate crashes

Fatalities: Victorian monthly totals since 1951

Year	Jan	Feb	Mar	Apr	May	Jun	Jul	Aug	Sep	Oct	Nov	Dec	Totals
1951							61	59	52	38	29	41	
1952	45	40	54	61	54	69	67	55	44	44	31	20	584
1953	23	28	54	58	49	42	50	37	44	27	36	32	480
1954	44	42	28	60	55	36	63	33	25	52	30	41	509
1955	44	36	45	55	48	56	64	44	44	32	40	40	548
1956	34	48	51	67	53	65	71	47	39	39	44	48	606
1957	50	41	46	58	52	54	57	53	51	46	32	49	589
1958	50	38	42	58	54	41	54	53	57	40	57	52	596
1959	50	57	61	50	75	55	42	48	52	55	63	63	671
1960	49	53	57	76	70	70	67	62	61	77	52	66	760
1961	63	57	68	74	58	68	78	82	59	62	60	65	794
1962	65	41	76	78	72	80	70	77	62	53	64	70	808
1963	67	56	65	85	66	68	77	55	55	58	61	67	780
1964	73	71	78	71	83	89	80	89	67	66	62	75	904
1965	63	64	86	88	80	87	79	69	81	77	68	87	929
1966	75	59	75	103	74	86	87	80	75	66	90	85	955
1967	61	79	91	97	81	71	59	67	70	68	60	83	887
1968	70	78	86	78	73	76	73	77	72	80	81	105	949
1969	79	68	79	87	86	77	87	83	87	83	94	101	1,011
1970	85	84	106	80	87	88	110	106	78	95	68	74	1,061
1971	83	75	77	68	76	86	85	72	78	73	74	76	923
1972	61	62	75	82	75	71	98	85	83	62	80	81	915
1973	75	75	95	85	64	66	61	85	89	88	66	86	935
1974	56	62	81	60	70	73	67	62	53	70	80	72	806
1975	67	65	87	73	97	94	57	75	69	66	71	89	910
1976	79	78	88	78	69	79	60	70	82	78	77	100	938
1977	65	71	89	79	65	79	70	91	68	74	96	107	954
1978	75	54	95	63	64	69	68	77	65	84	83	72	869
1979	63	60	86	75	45	64	66	75	69	79	72	93	847
1980	48	55	66	59	47	56	60	53	45	58	61	49	657
1981	69	60	58	61	74	65	61	63	68	71	59	57	766
1982	55	53	59	59	67	45	47	71	53	69	65	66	709
1983	42	59	53	63	62	61	65	51	59	43	54	52	664
1984	65	48	58	50	56	48	46	50	71	53	55	58	658
1985	56	47	50	65	75	50	51	50	58	61	56	64	683
1986	56	50	70	69	59	53	42	54	54	52	59	51	669
1987	62	43	57	52	63	59	62	49	62	61	55	80	705
1988	49	58	69	54	79	50	54	52	64	59	43	70	701
1989	76	65	80	59	67	73	52	65	82	50	41	66	776
1990	48	44	55	39	56	64	41	34	48	35	40	44	548
1991	45	39	70	30	34	29	44	47	41	36	35	53	503
1992	34	33	34	47	33	29	23	27	28	38	30	40	396
1993	27	40	37	39	44	33	33	27	34	39	43	40	436
1994	36	31	44	35	27	33	29	37	17	27	32	30	378
1995	38	35	26	33	34	41	27	34	34	32	38	46	418
1996	40	47	35	38	28	29	30	35	49	24	33	30	418
1997	36	25	30	30	40	22	39	26	26	29	39	35	377
1998	29	29	32	36	31	22	40	19	37	36	49	30	390
1999	32	31	35	35	34	24	35	26	28	38	29	37	384
2000	32	26	46	32	39	32	33	29	36	29	44	29	407
2001	44	30	31	32	31	41	34	37	35	51	41	37	444
2002	32	31	45	31	45	32	27	25	31	30	31	37	397
2003	21	41	36	28	31	28	20	23	23	24	24	31	330
2004	32	22	30	30	46	28	27	26	22	28	25	27	343
2005	33	27	47	21	29	23	30	25	25	33	17	36	346
2006	24	37	23	23	27	23	25	22	43	20	31	39	337
2007	23	23	32	25	26	28	28	20	23	37	26	41	332
2008	28	20	37	25	25	20	27	27	18	25	26	25	303
2009	31	18	23	32	19	30	19	21	14	28	21	34	290
2010	26	25	23	20	31	26	26	18	17	36	12	28	288
2011	18	20	34	31	30	24	25	14	12	22	30	27	287
2012	30	20	25	19	23	22	17	25	17	34	26	24	282
2013	14	24	24	19	18	13	24	20	19	15	23	30	243
2014	25	21	25	14	23	17	22	21	20	19	28	13	248
2015	24	20	22	22	21	22	18	26	14	27	19	17	252
2016	21	34	26										
Ave	48	46	55	53	53	51	51	49	49	49	49	54	599
Max	85	84	106	103	97	94	110	106	89	95	96	107	1,061
Min	14	18	22	14	18	13	17	14	12	15	12	13	21

Fatalities by Week (2009 to 2016)

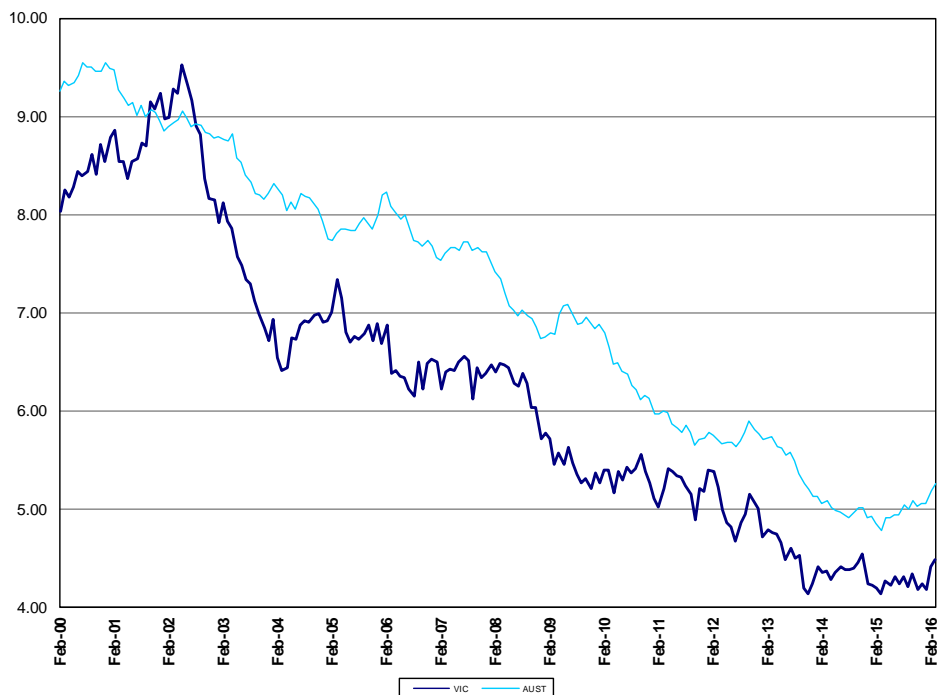
Week Ending	2009	2010	2011	2012	2013	2014	2015	2016	Cumulative 2016	% Change 2016-2015
5-Jan	7	3	2	3	1	0	2	7	2	-
12-Jan	10	5	6	7	3	5	5	10	17	+143%
19-Jan	4	6	3	8	6	7	6	4	21	+62%
26-Jan	4	5	4	9	4	9	2	4	25	+19%
2-Feb	6	9	6	5	3	6	10	6	31	+15%
9-Feb	6	7	5	3	8	4	6	6	37	+19%
16-Feb	7	4	6	7	6	8	4	7	44	+13%
23-Feb	4	8	3	6	6	2	6	4	48	+17%
2-Mar	1	7	3	2	2	6	4	1	49	+4%
9-Mar	3	2	10	3	4	8	8	3	52	-5%
16-Mar	6	8	6	11	6	4	6	6	58	-2%
23-Mar	6	3	9	5	10	4	2	6	64	+2%
30-Mar	8	7	9	6	2	6	3	8	72	+4%
6-Apr	5	4	6	7	4	6	3			
13-Apr	5	5	9	2	6	6	6			
20-Apr	11	7	7	6	4	2	8			
27-Apr	9	1	6	3	5	2	5			
4-May	6	6	6	10	6	3	4			
11-May	7	8	6	2	3	4	6			
18-May	1	4	7	4	1	3	4			
25-May	2	11	10	6	2	5	4			
1-Jun	6	5	5	2	9	9	5			
8-Jun	4	7	4	8	2	2	5			
15-Jun	9	4	6	3	3	2	4			
22-Jun	7	8	7	8	5	3	4			
29-Jun	9	7	6	3	1	8	5			
6-Jul	3	7	4	2	5	6	10			
13-Jul	6	2	8	5	7	7	2			
20-Jul	4	3	6	5	4	3	2			
27-Jul	5	8	6	5	5	4	3			
3-Aug	4	10	3	1	8	4	6			
10-Aug	7	3	5	5	1	5	4			
17-Aug	6	5	3	5	3	6	9			
24-Aug	3	5	2	6	6	4	7			
31-Aug	3	1	3	8	5	5	3			
7-Sep	2	5	1	5	5	4	4			
14-Sep	4	1	4	6	2	6	3			
21-Sep	4	4	1	3	3	4	2			
28-Sep	3	5	5	3	8	3	6			
5-Oct	2	9	4	7	3	4	4			
12-Oct	6	10	5	8	2	8	6			
19-Oct	8	5	3	9	3	0	6			
26-Oct	8	7	3	6	3	8	8			
2-Nov	5	8	8	6	6	2	5			
9-Nov	3	1	6	7	8	3	5			
16-Nov	9	2	12	6	2	8	4			
23-Nov	6	3	9	5	8	3	2			
30-Nov	4	5	2	9	4	13	5			
7-Dec	5	4	10	7	6	5	8			
14-Dec	8	8	3	4	10	2	5			
21-Dec	11	6	7	1	9	3	2			
28-Dec	6	8	6	8	4	3	5			
31-Dec	2	2	1	1	1	1	1			
Total	290	288	287	282	243	248	254	72		

The National Picture

State	Fatalities (12 months to March)					2016 v 2015	
	2016	2015	2014	2013			
NSW	366	295	344	357	+71	(+24%)	
VIC	268	243	252	269	+25	(+10%)	
QLD	252	218	248	298	+34	(+16%)	
SA	102	103	92	100	-1	(-1%)	
WA	171	184	161	181	-13	(-7%)	
TAS	34	40	34	35	-6	(-15%)	
NT	50	38	43	46	+12	(+32%)	
ACT	16	7	7	16	+9	(+129%)	
AUST TOTAL	1,259	1,128	1,181	1,302	+131	(+12%)	
AUST minus VIC	991	885	929	1,033	+106	(+12%)	

State	Fatalities per 10,000 registered vehicles (12 months to March)			Fatalities per 100,000 population (12 months to March)		
	2016	2015	2014	2016	2015	2014
NSW	0.68	0.57	0.68	4.79	3.91	4.63
VIC	0.58	0.54	0.57	4.49	4.14	4.37
QLD	0.66	0.58	0.68	5.26	4.60	5.31
SA	0.75	0.77	0.70	5.99	6.10	5.49
WA	0.77	0.85	0.76	6.59	7.14	6.36
TAS	0.75	0.89	0.77	6.58	7.76	6.62
NT	3.19	2.47	2.85	20.45	15.51	17.85
ACT	0.56	0.25	0.25	4.08	1.81	1.82
AUST TOTAL	0.69	0.63	0.68	5.28	4.79	5.09
AUST minus VIC	0.73	0.66	0.71	5.55	4.97	5.31

Deaths per 100,000 population, Victoria v Australia 2000 - 2016



Victoria v Australia – 12 Month Moving Fatality Rate

Booze-Bus Random Breath Testing

12 months to March 2016 (monthly totals)

	2015									2016		
	Apr	May	Jun	Jul	Aug	Sep	Oct	Nov	Dec	Jan	Feb	Mar
Melbourne	74,387	70,603	63,988	64,557	78,225	79,794	87,587	90,741	97,335	94,950	84,870	74,906
Country	3,095	7,283	10,186	2,833	3,734	4,598	6,184	7,167	4,673	7,818	4,079	8,676
Vic Total	77,482	77,886	74,174	67,390	81,959	84,392	93,771	97,908	102,008	102,768	88,949	83,582

12 months to March 2016 vs previous 12 months

	2016	2015	2014	2016 v 2015	2016 v 2014
Melbourne	961,943	1,172,395	1,060,175	-210452 (-18%)	-98232 (-9%)
Country	70,326	99,088	90,264	-28762 (-29%)	-19938 (-22%)
Vic Total	1,032,269	1,271,483	1,150,439	-239214 (-19%)	-118170 (-10%)

Mobile Safety Camera Data

Speed Infringements Issued from Mobile Cameras (monthly totals)

Monthly Average = 32,484

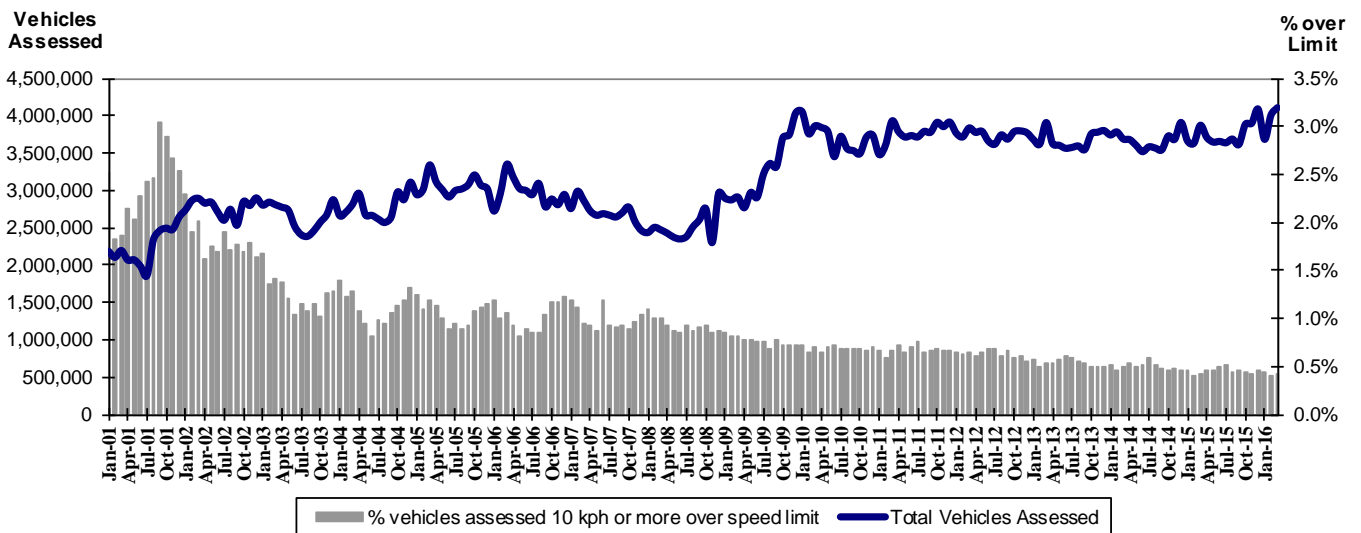
2015	2016											
	Apr	May	Jun	Jul	Aug	Sep	Oct	Nov	Dec	Jan	Feb	Mar
	33,790	30,434	33,386	36,437	31,001	29,975	34,436	29,747	35,684	32,312	31,573	31,038

Excessive Speed Infringements (ESI) Issued from Mobile Cameras (monthly totals)

Monthly Average = 317

2015	2016											
	Apr	May	Jun	Jul	Aug	Sep	Oct	Nov	Dec	Jan	Feb	Mar
	335	258	342	338	312	283	352	243	366	274	353	348

Notes: An ESI is defined as 25km/h over the speed limit except in a 110km/h zone where it is 20km/h over the limit.



Mobile Safety Cameras – Vehicles assessed and percentage of vehicles assessed 10km/h or more over speed limit per month

Explanations and References

Hi-AlcTime is those times of the day and week (*shaded* in the table below) when casualty crashes are ten times more likely to involve alcohol than casualty crashes at other (Lo-AlcTime) times.

	12am - 6am	6am - 8am	8am - 10am	10am - 2pm	2pm - 4pm	4pm - 6pm	6pm - 12pm
Monday							
Tuesday							
Wednesday							
Thursday							
Friday							
Saturday							
Sunday							

Police Service Areas align with Local Government Areas. Most Police Service Areas are equivalent to a single Local Government Area, while the remainder comprise two or three Local Government Areas.

Police Service Area	Local Government Area(s)	Police Service Area	Local Government Area(s)
BALLARAT	BALLARAT, PYRENEES	MAROONDAH	MAROONDAH
BANYULE	BANYULE	MELBOURNE	MELBOURNE
BASS COAST	BASS COAST, SOUTH GIPPSLAND	MELTON	MELTON
BAW BAW	BAWBAW	MILDURA	MILDURA
BENALLA	BENALLA, MANSFIELD, MURRINDINDI	MITCHELL	MITCHELL, STRATHBOGIE
BENDIGO	GREATER BENDIGO	MONASH	MONASH
BOROONDARA	BOROONDARA	MOONEE VALLEY	MOONEE VALLEY
BRIMBANK	BRIMBANK	MOORABOOL	GOLDEN PLAINS, HEPBURN, MOORABOOL
CAMPASPE	CAMPASPE	MORELAND	MORELAND
CARDINIA	CARDINIA	MORNINGTON PENINSULA	MORNINGTON PENINSULA
CASEY	CASEY	NILLUMBIK	NILLUMBIK
CENTRAL GOLDFIELDS	CENTRAL GOLDFIELDS, LODDON	NORTHERN GRAMPIANS	ARARAT, NORTHERN GRAMPIANS, YARRIAMBICK
GREATER DANDENONG	GREATER DANDENONG	PORT PHILLIP	PORT PHILLIP
DAREBIN	DAREBIN	SHEPPARTON	GREATER SHEPPARTON
EAST GIPPSLAND	EAST GIPPSLAND	SOUTHERN GRAMPIANS	GLENELG, SOUTHERN GRAMPIANS
FRANKSTON	FRANKSTON	STONNINGTON	STONNINGTON
GEELONG	GREATER GEELONG, QUEENSCLIFF	SURFCOAST	SURFCOAST, COLAC OTWAY
GLENEIRA	GLENEIRA, BAYSIDE	SWANHILL	BULOKE, GANNAWARRA, SWAN HILL
HOBSONS BAY	HOBSONSBAY	WANGARATTA	ALPINE, MOIRA, WANGARATTA
HORSHAM	HINDMARSH, HORSHAM, WESTWIMMERA	WARRNAMBOOL	CORANGAMITE, MOYNE, WARRNAMBOOL
HUME	HUME	WELLINGTON	WELLINGTON
KINGSTON	KINGSTON	WHITEHORSE	WHITEHORSE
KNOX	KNOX	WHITTLESEA	WHITTLESEA
LATROBE	LATROBE	WODONGA	INDIGO, TOWONG, WODONGA
MACEDON RANGES	MOUNT ALEXANDER, MACEDON RANGES	WYNDHAM	WYNDHAM
MANNINGHAM	MANNINGHAM	YARRA	YARRA
MARIBYRNONG	MARIBYRNONG	YARRA RANGES	YARRA RANGES

Useful Internet Sites

TAC Sites

- TAC Safety (Road Safety) www.tacsafety.com.au
- TAC How safe is your car www.howsafeisyourcar.com.au
- TAC Learners Log www.learnerslog.com.au
- TAC Motorcycle Safety Website www.spokes.com.au
- TAC Corporate site www.tac.vic.gov.au

Victorian Sites:

- VicRoads www.vicroads.vic.gov.au
- Victoria Police www.police.vic.gov.au
- Parliamentary Road Safety Committee www.parliament.vic.gov.au/rsc/
- ARRB Transport Research www.arrb.com.au
- RACV www.racv.com.au
- Monash University Accident Research Centre www.monash.edu.au/muarc
- Roadsafe www.roadsafe.org.au
- Cameras Save Lives www.camerassavelives.vic.gov.au

National and Interstate Sites:

- Australian Transport Safety Bureau www.atsb.gov.au
- Roads and Traffic Authority (NSW) www.rta.nsw.gov.au
- Queensland Transport - Road Safety transport.qld.gov.au/Home/Safety/Road
- Department of Transport (SA) www.transport.sa.gov.au/index.htm
- Main Roads Western Australia - Road Safety www.mrwa.wa.gov.au

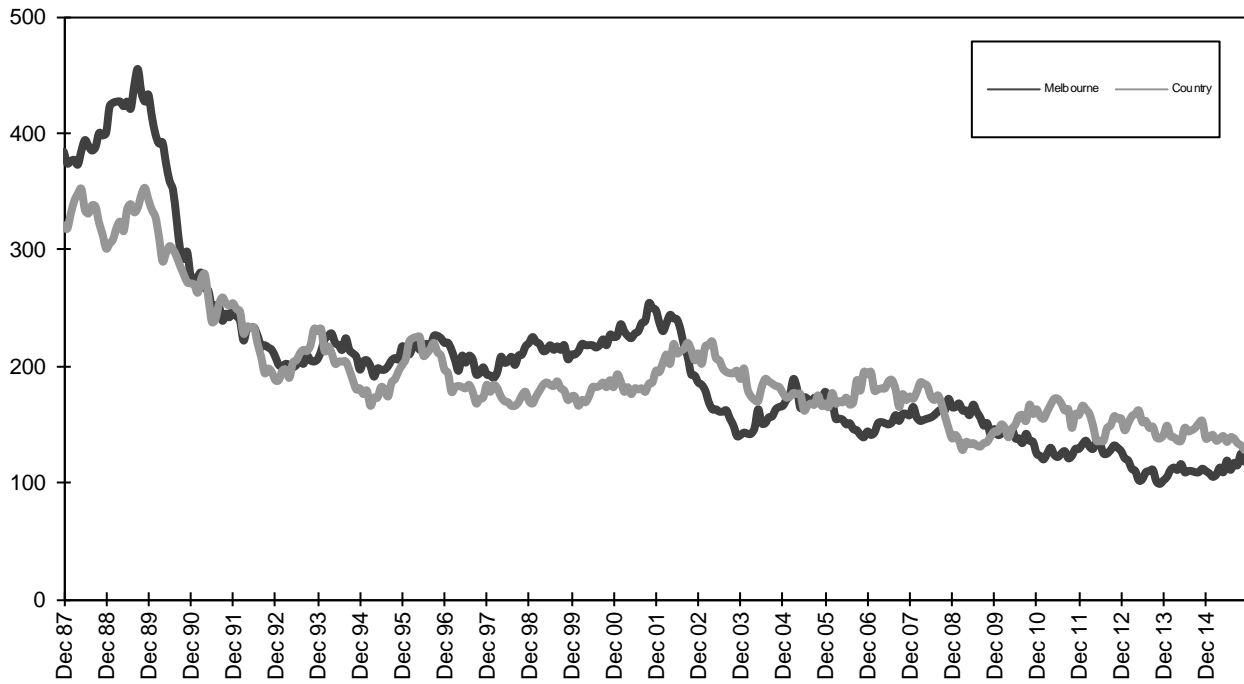
International Sites:

- National Highway Traffic Safety Admin (USA) www.nhtsa.dot.gov
- Swedish Road and Transport Institute (VTI) www.vti.se
- SWOV Institute for Road Safety Research www.swov.nl

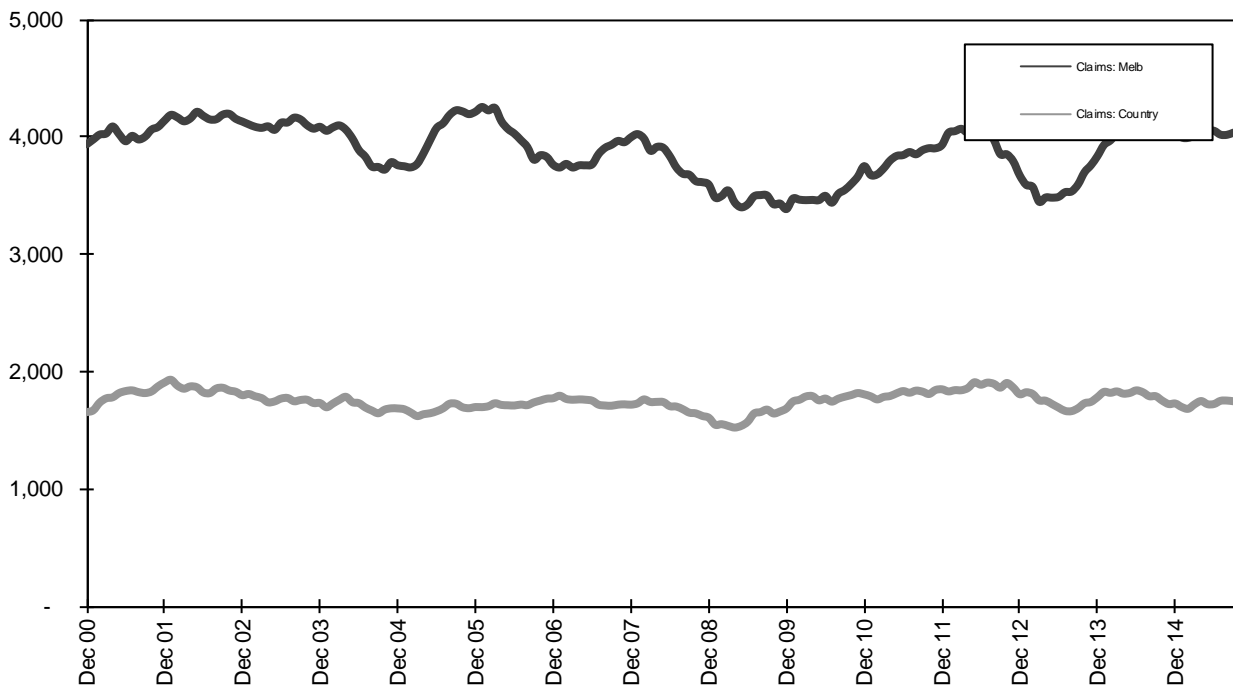
Related Sites:

- Australian Drug Foundation www.adf.org.au
- Amy Gillett Foundation www.amygillett.org.au

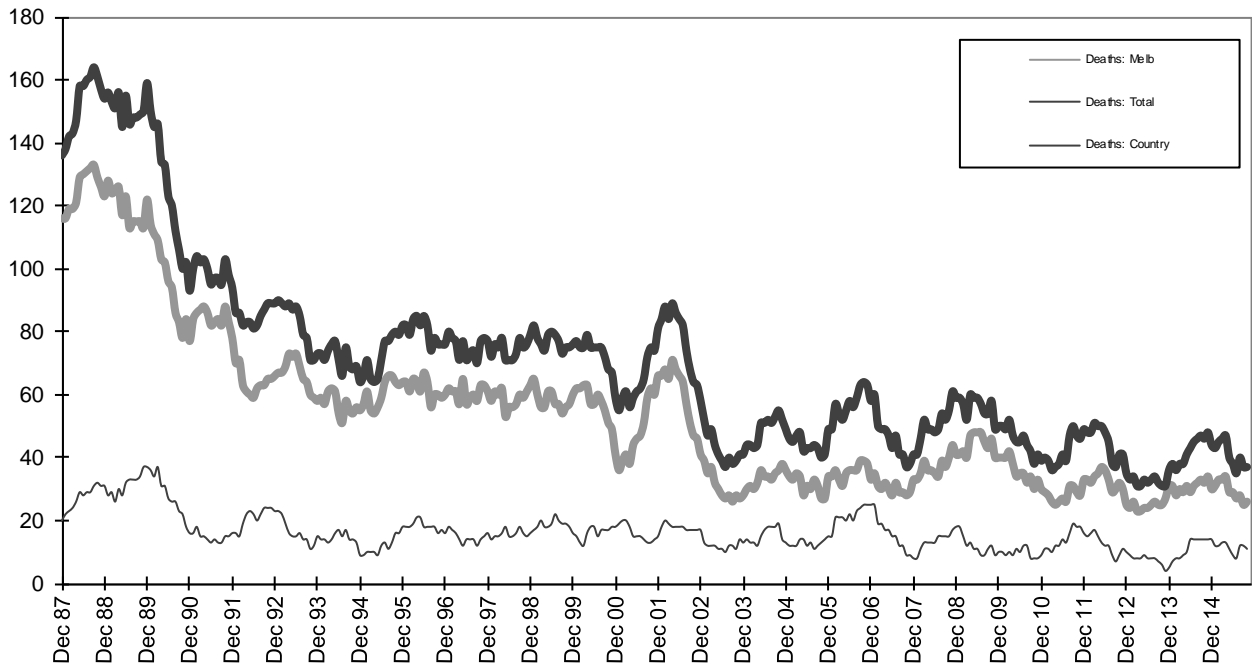
Figures



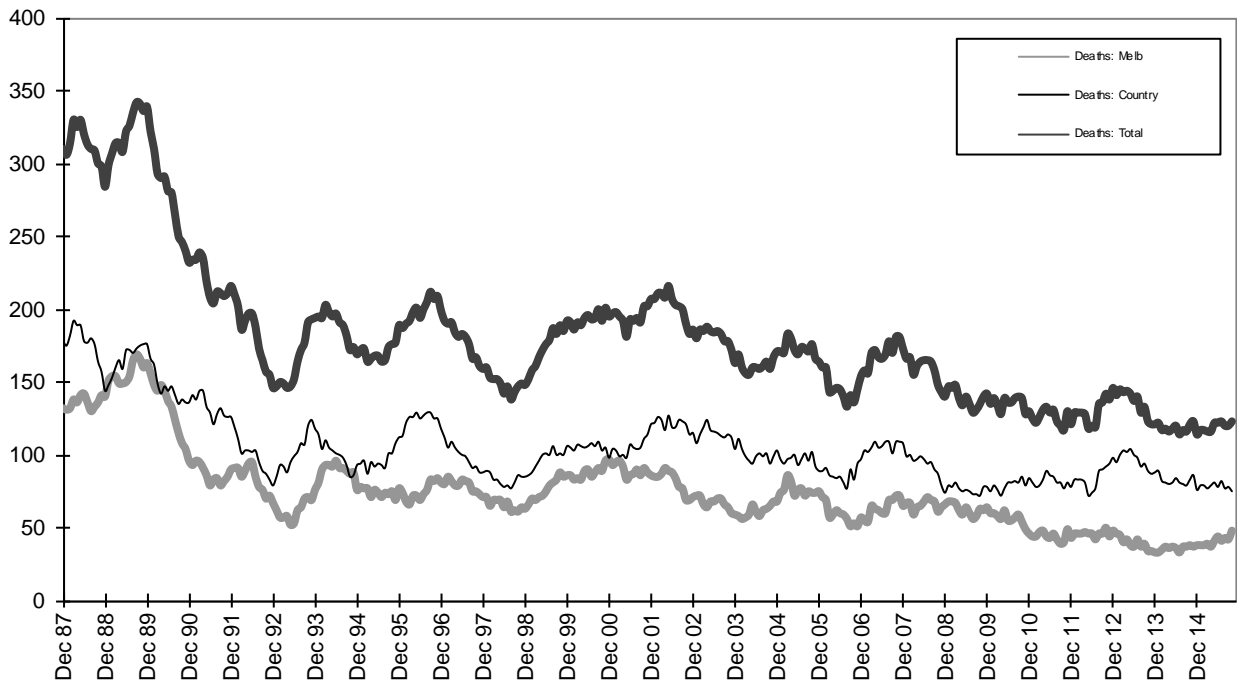
Graph 1a - Melbourne/country fatalities



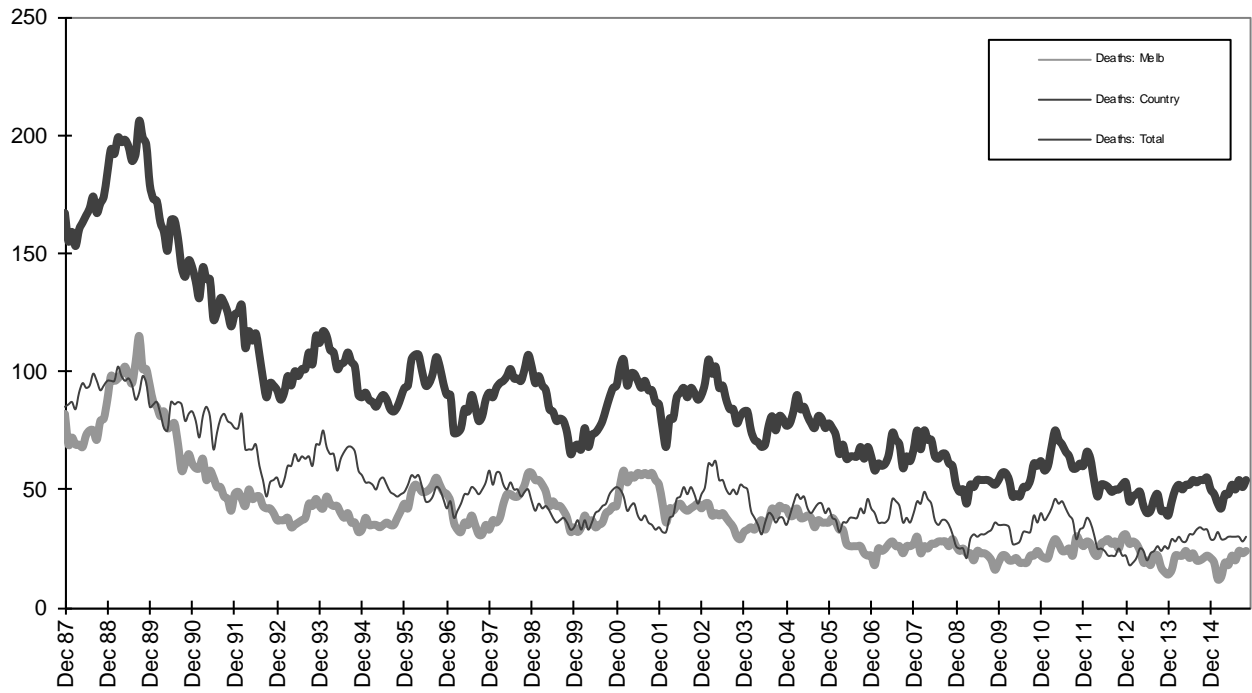
Graph 1b - Melbourne/country Claims involving an acute hospital admission



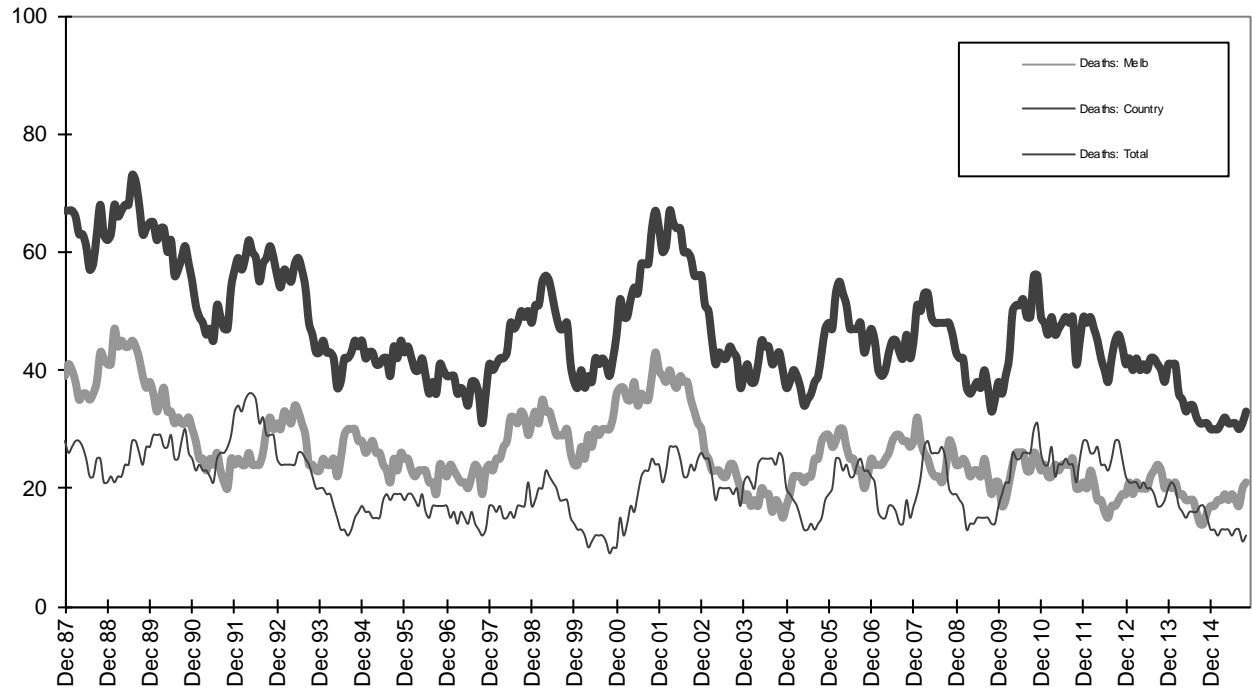
Graph 2a - Pedestrian fatalities (Melbourne/country)



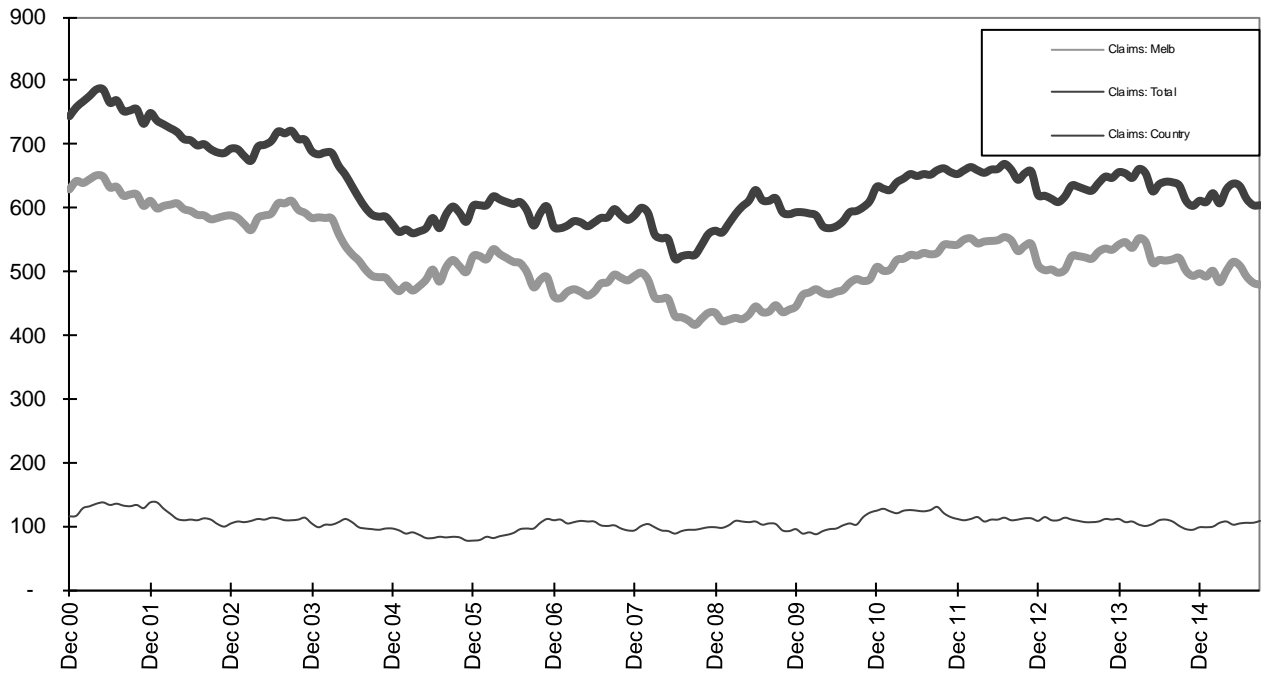
Graph 2b - Driver fatalities (Melbourne/country)



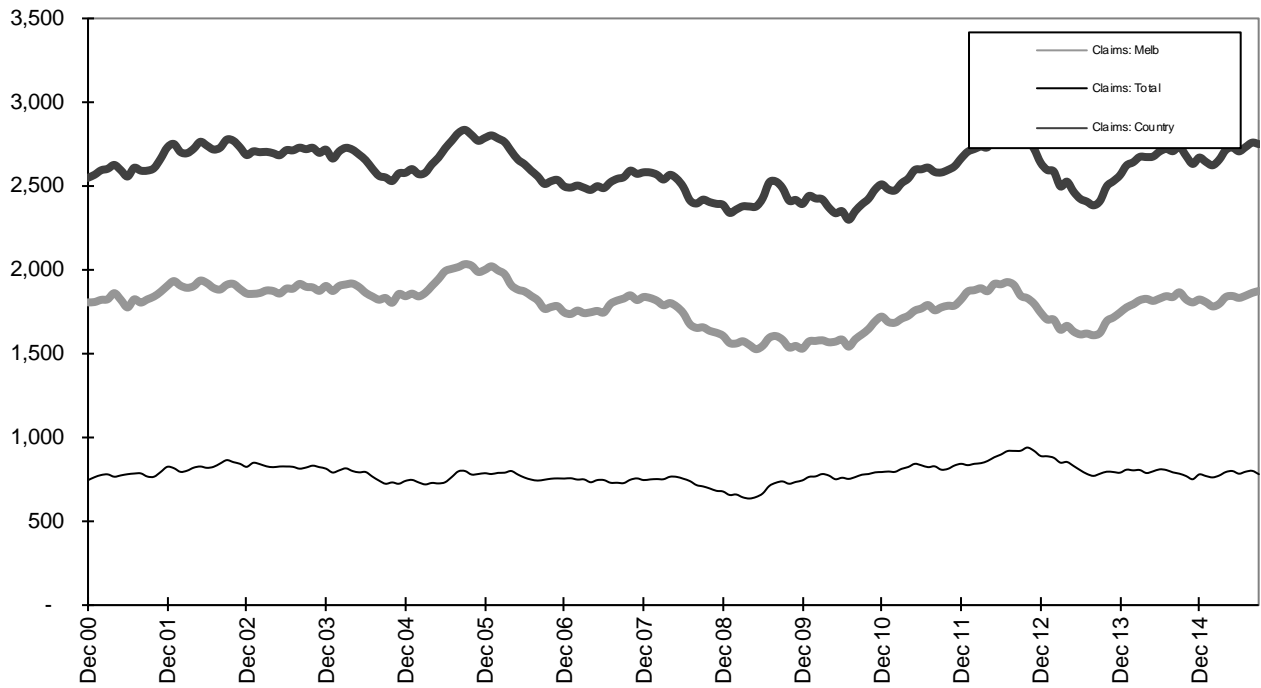
Graph 2c - Passenger fatalities (Melbourne/country)



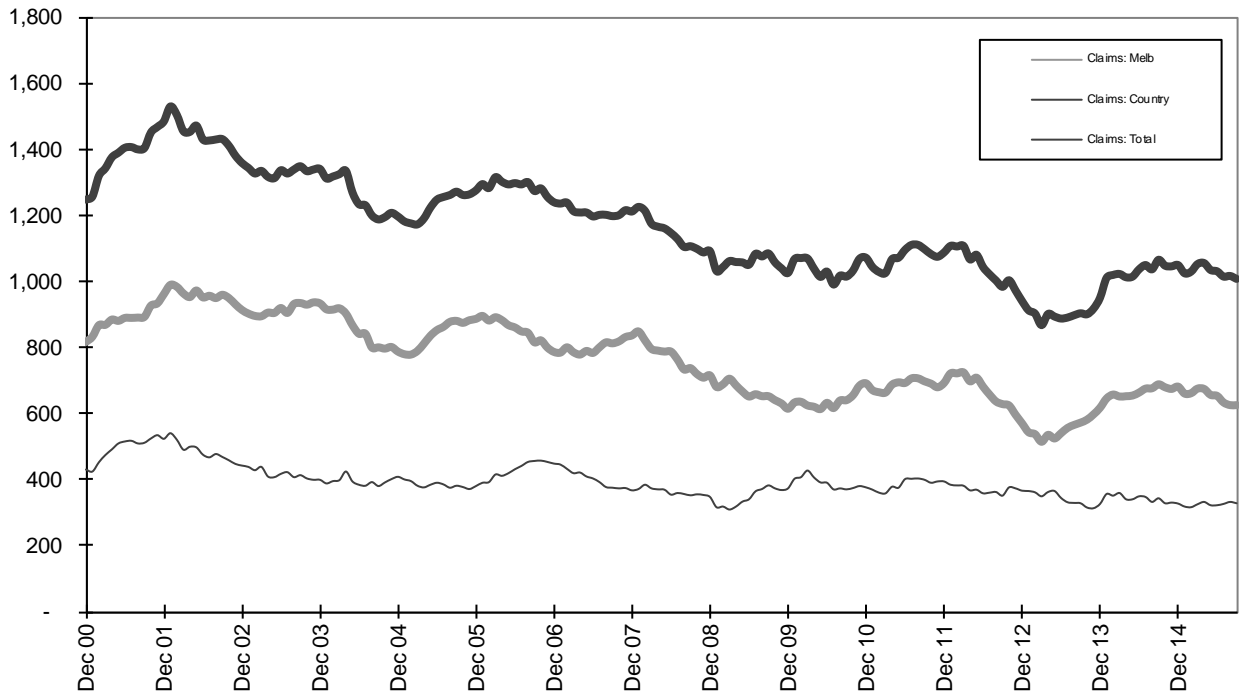
Graph 2d - Motorcyclist fatalities (Melbourne/country)



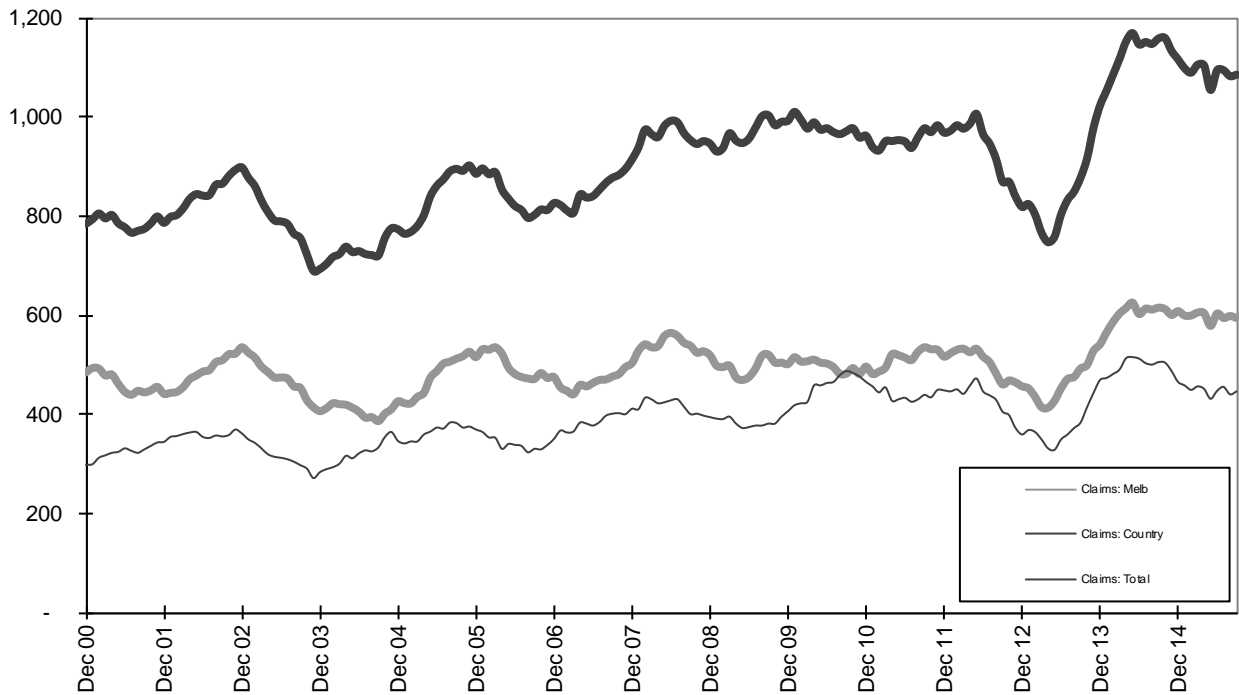
Graph 3a - Pedestrian Claims involving an acute hospital admission (Melbourne/country)



Graph 3b - Driver Claims involving an acute hospital admission (Melbourne/country)



Graph 3c - Passenger Claims involving an acute hospital admission (Melbourne/country)



Graph 3d - Motorcyclist Claims involving an acute hospital admission (Melbourne/country)