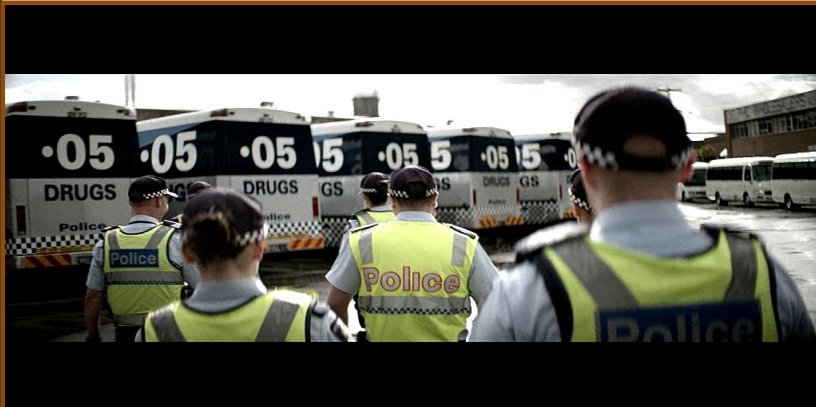


ROAD SAFETY STATISTICAL SUMMARY

November 2013



**TRANSPORT
ACCIDENT
COMMISSION**

60 Brougham Street
Geelong Vic 3220
PO Box 742
Geelong Vic 3220
Ausdoc DX 216079 Geelong

Telephone 1300 654 329
STD Toll Free 1800 332 556
Fax: 03 9656 9300
www.tac.vic.gov.au
ABN 22 033 947 623

Contents

Status Report.....	4
Fatalities.....	4
Claims involving acute hospitalisation over 14 days and an acute hospital admission*	5
Fatalities: 12 months to November 2013	6
Claims involving acute hospitalisation over 14 days: 12 months to May 2013 (claim acceptance date).....	8
Claims involving an acute hospital admission: 12 months to May 2013 (claim acceptance date)	10
Fatalities: Victorian monthly totals since 1951	12
Fatalities by Week (2007 to 2013).....	13
Alcohol Related Fatalities.....	14
The National Picture	15
Booze-Bus Random Breath Testing	16
Mobile Safety Camera Data	16
Explanations and References	17
Useful Internet Sites.....	18
Figures	19

Note about the data in this report

- All data provided in this report is the data most recently available at time of production. Fatalities, breath-test data and safety camera data are updated to the end of report month. A 6-month lag applies to TAC claims data, and a 2-month lag applies to alcohol related fatalities data.
- Reported data will have one extra day of exposure for leap years.
- Data is subject to revision as additional information about known accidents/claims is received, and as new accident/claim reports are received and processed.

*An acute hospital admission refers to a hospital admission that occurred within 7 days of accident.

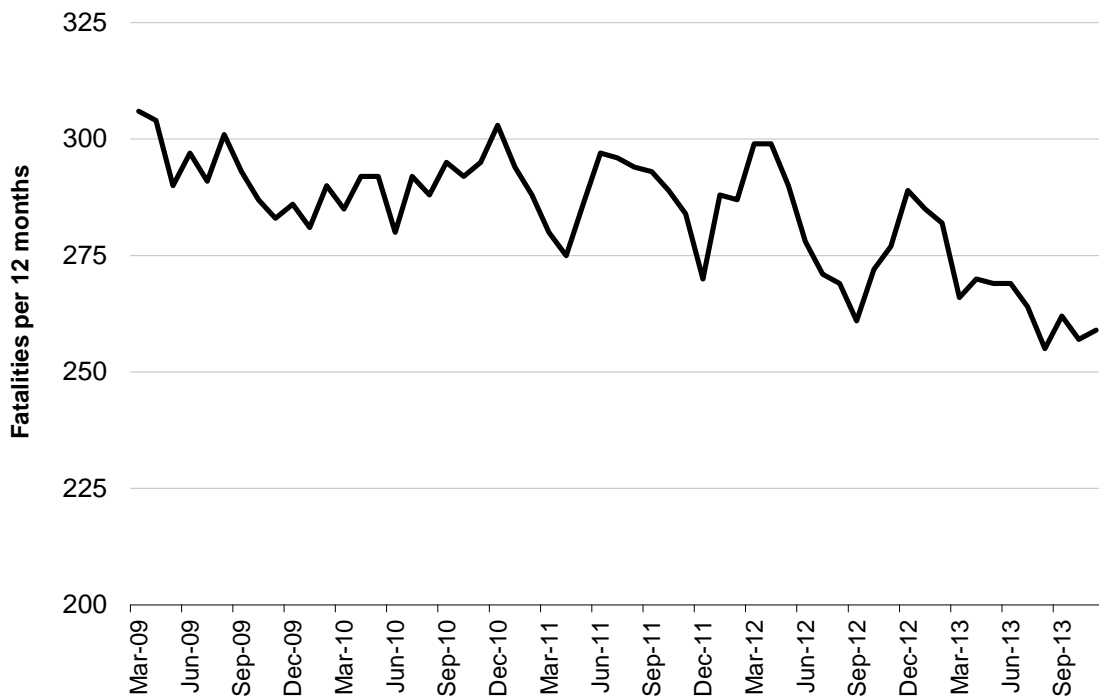
Status Report

Fatalities

- The rolling 12 month number of road fatalities in November 2013 stands at 237, 17% less than in 2012 (285).
- 24 people were fatally injured in November 2013 on Victorian roads. This compares to 26 in November 2012.

Fatalities (rolling 12 month, to end November 2013)

Category	2013	2012	2011	2013 v 2012	2013 v 2011	5 Year Av
Fatal Injuries (Rolling 12 Month Total)						
Fatal (to November)	237	285	288	-48	(-17%)	277
per 10,000 veh	0.54	0.66	0.68	-0.12	(-18%)	0.68
per 100,000 pop	4.14	5.09	5.21	-0.95	(-19%)	5.15
Accidents (Rolling 12 Month Total)						
Fatal (to November)	220	265	261	-45	(-17%)	255
per 10,000 veh	0.50	0.61	0.62	-0.11	(-18%)	0.62
per 100,000 pop	3.86	4.74	4.72	-0.88	(-19%)	4.72

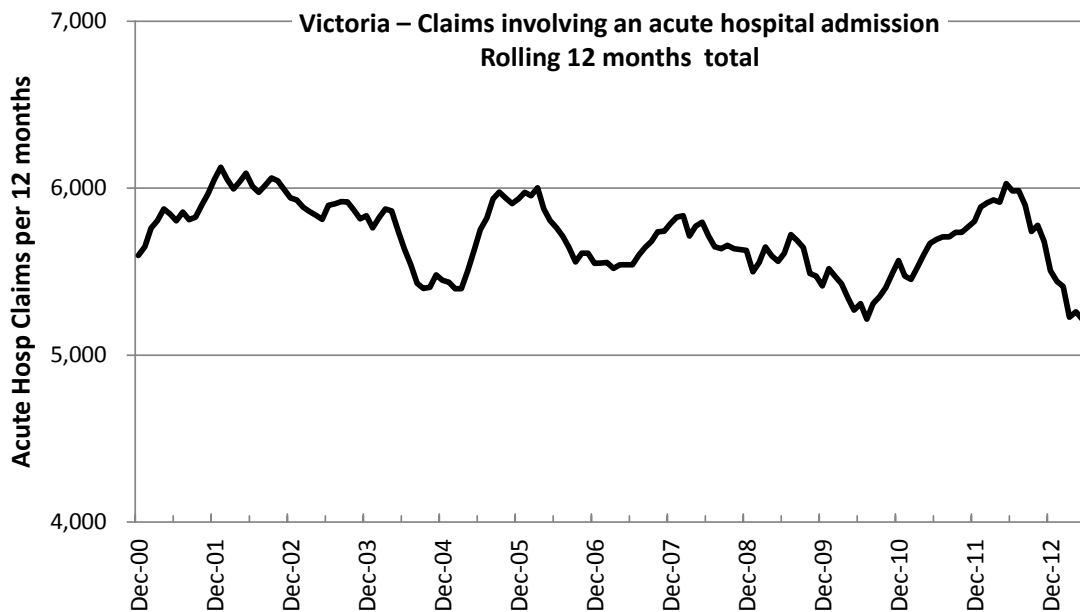
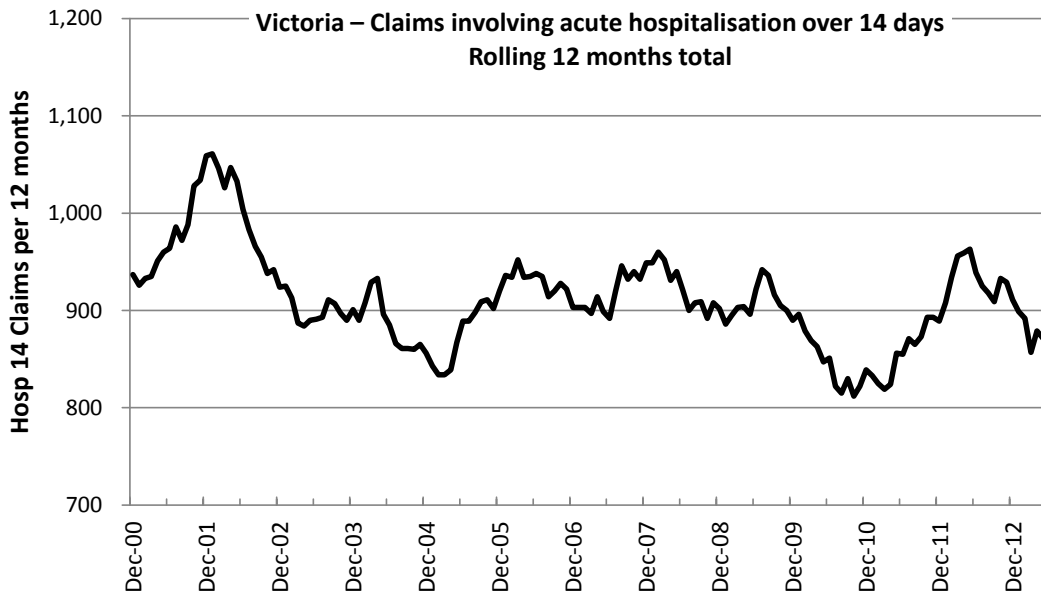


Victoria – Fatalities, rolling 12 months total

Claims involving acute hospitalisation over 14 days and an acute hospital admission*

(by claim acceptance date – rolling 12 month, to midnight 31 May 2013)

Category	2013	2012	2011	2013 vs. 2012		2013 vs. 2011		5 Year Av
Claims involving acute hospitalisation over 14 days (Rolling 12 Month Total)								
Claims (to May)	870	963	855	-93	(-10%)	+15	(+2%)	886
per 100,000 pop	15.4	17.3	15.6	-1.9	(-11%)	-0.2	(-1%)	16.3
per 10,000 veh	2.0	2.3	2.0	-0.3	(-13%)	0.0	(+0%)	2.2
Claims involving an acute hospital admission (Rolling 12 Month Total)								
Claims (to May)	5,219	6,028	5,668	-809	(-13%)	-449	(-8%)	5,549
per 100,000 pop	92.0	108.4	103.1	-16.4	(-15%)	-11.1	(-11%)	102.6
per 10,000 veh	12.0	14.1	13.6	-2.1	(-15%)	-1.6	(-12%)	13.6



*An acute hospital admission refers to a hospital admission that occurred within 7 days of accident.

Fatalities: 12 months to November 2013

Category	2013	2012	2011	2013 v 2012		2013 v 2011		5 Year Av
Overview								
Fatalities	237	285	288	-48	(-17%)	-51	(-18%)	277
Accidents	220	265	261	-45	(-17%)	-41	(-16%)	255
Sex								
Female	80	84	79	-4	(-5%)	+1	(+1%)	80
Male	157	201	209	-44	(-22%)	-52	(-25%)	197
Roaduser								
Bicyclist	6	10	6	-4	(-40%)	0	(0%)	7
Driver	122	138	130	-16	(-12%)	-8	(-6%)	132
Motorcyclist	37	44	45	-7	(-16%)	-8	(-18%)	43
Passenger	41	52	61	-11	(-21%)	-20	(-33%)	53
Pedestrian	31	41	46	-10	(-24%)	-15	(-33%)	42
Location								
Melbourne	95	130	129	-35	(-27%)	-34	(-26%)	126
Rural Victoria	142	155	159	-13	(-8%)	-17	(-11%)	151
Agegroup								
0-4	0	4	6	-4	(-100%)	-6	(-100%)	4
5-15	5	8	10	-3	(-38%)	-5	(-50%)	8
16-17	3	5	10	-2	(-40%)	-7	(-70%)	6
18-20	16	30	34	-14	(-47%)	-18	(-53%)	30
21-25	26	30	32	-4	(-13%)	-6	(-19%)	31
26-29	15	20	16	-5	(-25%)	-1	(-6%)	19
30-39	30	41	33	-11	(-27%)	-3	(-9%)	37
40-49	31	29	41	+2	(+7%)	-10	(-24%)	36
50-59	26	37	30	-11	(-30%)	-4	(-13%)	33
60-69	27	33	27	-6	(-18%)	0	(0%)	27
70+	56	47	49	+9	(+19%)	+7	(+14%)	47
Alctime								
High (Melb)	57	58	72	-1	(-2%)	-15	(-21%)	66
High (Rural)	54	76	78	-22	(-29%)	-24	(-31%)	71
High (Vic)	111	134	150	-23	(-17%)	-39	(-26%)	137
Low (Melb)	38	72	57	-34	(-47%)	-19	(-33%)	60
Low (Rural)	88	79	81	+9	(+11%)	+7	(+9%)	80
Low (Vic)	126	151	138	-25	(-17%)	-12	(-9%)	140
Accident Type								
Intersection								
Adjacent direction	32	29	33	0	(+10%)	-1	(-3%)	28
Opposing direction	2	5	7	-3	(-60%)	-5	(-71%)	5
Mid-block/other								
Head on	43	39	38	+4	(+10%)	+5	(+13%)	39
Same direction	17	13	14	+4	(+31%)	+3	(+21%)	17
Manoeuvre/o'taking	11	17	14	-6	(-35%)	-3	(-21%)	16
On path	1	8	3	-7	(-88%)	-2	(-67%)	5
Single vehicle	94	124	124	-30	(-24%)	-30	(-24%)	118
Other (incl peds)	37	50	55	-13	(-26%)	-18	(-33%)	50

Fatalities: 12 months to November 2013 - Continued

Category	2013	2012	2011	2013 v 2012		2013 v 2011		5 Year Av
Police Service Area (based on Local Government Area (see p.13))								
BALLARAT	7	2	8	+5	(+250%)	-1	(-13%)	6
BANYULE	3	3	4	0	(0%)	-1	(-25%)	3
BASS COAST	6	5	8	+1	(+20%)	-2	(-25%)	7
BAW BAW	5	5	8	0	(0%)	-3	(-38%)	7
BENALLA	11	7	10	+4	(+57%)	+1	(+10%)	9
BENDIGO	6	11	5	-5	(-45%)	+1	(+20%)	7
BOROONDARA	6	1	3	+5	(+500%)	+3	(+100%)	4
BRIMBANK	5	9	10	-4	(-44%)	-5	(-50%)	7
CAMPASPE	4	9	3	-5	(-56%)	+1	(+33%)	4
CARDINIA	1	8	8	-7	(-88%)	-7	(-88%)	6
CASEY	8	5	8	+3	(+60%)	0	(0%)	8
CENTRAL GOLDFIELDS	3	2	6	+1	(+50%)	-3	(-50%)	3
DAREBIN	1	5	3	-4	(-80%)	-2	(-67%)	3
EAST GIPPSLAND	4	7	8	-3	(-43%)	-4	(-50%)	8
FRANKSTON	0	3	5	-3	(-100%)	-5	(-100%)	4
GEELONG	11	11	13	0	(0%)	-2	(-15%)	11
GLEN EIRA	7	4	5	+3	(+75%)	+2	(+40%)	5
GREATER DANDENONG	3	6	3	-3	(-50%)	0	(0%)	5
HOBSONS BAY	3	0	1	+3		+2	(+200%)	1
HORSHAM	4	6	5	-2	(-33%)	-1	(-20%)	4
HUME	7	10	4	-3	(-30%)	+3	(+75%)	7
KINGSTON	7	9	2	-2	(-22%)	+5	(+250%)	5
KNOX	3	0	2	+3		+1	(+50%)	3
LA TROBE	7	8	3	-1	(-13%)	+4	(+133%)	6
MACEDON RANGES	3	8	2	-5	(-63%)	+1	(+50%)	5
MANNINGHAM	0	4	1	-4	(-100%)	-1	(-100%)	3
MARIBYRNONG	3	4	0	-1	(-25%)	+3		2
MAROONDAH	1	3	5	-2	(-67%)	-4	(-80%)	2
MELBOURNE	2	4	6	-2	(-50%)	-4	(-67%)	4
MELTON	6	6	8	0	(0%)	-2	(-25%)	6
MILDURA	5	0	4	+5		+1	(+25%)	3
MITCHELL	9	9	6	0	(0%)	+3	(+50%)	8
MONASH	3	5	5	-2	(-40%)	-2	(-40%)	5
MOONEE VALLEY	1	1	1	0	(0%)	0	(0%)	2
MOORABOOL	9	9	11	0	(0%)	-2	(-18%)	8
MORELAND	2	3	3	-1	(-33%)	-1	(-33%)	3
MORNINGTON PENINSULA	3	8	7	-5	(-63%)	-4	(-57%)	7
NILLUMBIK	0	2	3	-2	(-100%)	-3	(-100%)	2
NORTHERN GRAMPIANS	4	7	2	-3	(-43%)	+2	(+100%)	4
PORT PHILLIP	3	1	1	+2	(+200%)	+2	(+200%)	2
SHEPPARTON	4	12	4	-8	(-67%)	0	(0%)	6
SOUTHERN GRAMPIANS	1	4	7	-3	(-75%)	-6	(-86%)	5
STONNINGTON	2	1	2	+1	(+100%)	0	(0%)	1
SURF COAST	3	5	12	-2	(-40%)	-9	(-75%)	7
SWAN HILL	6	6	5	0	(0%)	+1	(+20%)	5
WANGARATTA	10	9	16	+1	(+11%)	-6	(-38%)	12
WARRNAMBOOL	8	4	5	+4	(+100%)	+3	(+60%)	6
WELLINGTON	5	3	7	+2	(+67%)	-2	(-29%)	4
WHITEHORSE	1	4	5	-3	(-75%)	-4	(-80%)	4
WHITTLESEA	3	7	4	-4	(-57%)	-1	(-25%)	7
WODONGA	4	5	1	-1	(-20%)	+3	(+300%)	4
WYNDHAM	4	9	9	-5	(-56%)	-5	(-56%)	6
YARRA	2	1	1	+1	(+100%)	+1	(+100%)	2
YARRA RANGES	8	5	10	+3	(+60%)	-2	(-20%)	9

Claims involving acute hospitalisation over 14 days: 12 months to May 2013 (claim acceptance date)

Category	2013	2012	2011	2013 v 2012	2013 v 2011	5 Year Av
Overview						
Claims	870	963	855	-93 (-10%)	+15 (+2%)	886
Sex						
Female	366	411	316	-45 (-11%)	+50 (+16%)	354
Male	503	552	538	-49 (-9%)	-35 (-7%)	532
Roaduser						
Driver	378	355	335	+23 (+6%)	+43 (+13%)	343
Passenger	140	162	131	-22 (-14%)	+9 (+7%)	149
Motorcyclist	123	179	167	-56 (-31%)	-44 (-26%)	162
Pedestrian	177	201	166	-24 (-12%)	+11 (+7%)	176
Cyclist	31	40	43	-9 (-23%)	-12 (-28%)	37
Train/Tram	6	9	8	-3 (-33%)	-2 (-25%)	6
Location						
Melbourne	554	633	549	-79 (-12%)	+5 (+1%)	557
Rural Victoria	309	325	291	-16 (-5%)	+18 (+6%)	302
Agegroup						
0-4	2	1	7	+1 (+100%)	-5 (-71%)	4
5-15	7	19	11	-12 (-63%)	-4 (-36%)	15
16-17	17	25	21	-8 (-32%)	-4 (-19%)	22
18-20	63	54	55	+9 (+17%)	+8 (+15%)	63
21-25	83	86	85	-3 (-3%)	-2 (-2%)	84
26-29	37	67	53	-30 (-45%)	-16 (-30%)	54
30-39	110	126	106	-16 (-13%)	+4 (+4%)	117
40-49	109	124	118	-15 (-12%)	-9 (-8%)	115
50-59	102	104	97	-2 (-2%)	+5 (+5%)	99
60-69	103	119	96	-16 (-13%)	+7 (+7%)	98
70+	237	238	206	-1 (-0%)	+31 (+15%)	215
Alctime						
High (Melb)	245	285	232	-40 (-14%)	+13 (+6%)	247
High (Rural)	117	135	119	-18 (-13%)	-2 (-2%)	124
High (Vic)	362	420	351	-58 (-14%)	+11 (+3%)	372
Low (Melb)	309	348	317	-39 (-11%)	-8 (-3%)	310
Low (Rural)	192	190	172	+2 (+1%)	+20 (+12%)	178
Low (Vic)	501	538	489	-37 (-7%)	+12 (+2%)	487
Accident Type						
Intersection						
Adjacent direction	125	127	119	-2 (-2%)	+6 (+5%)	122
Opposing direction	52	70	59	-18 (-26%)	-7 (-12%)	59
Mid-block/other						
Head on	80	76	91	+4 (+5%)	-11 (-12%)	78
Same direction	69	99	96	-30 (-30%)	-27 (-28%)	83
Manoeuvre/o'taking	65	54	52	+11 (+20%)	+13 (+25%)	53
On path	21	21	18	0 (0%)	+3 (+17%)	23
Single vehicle	235	269	229	-34 (-13%)	+6 (+3%)	254
Other (incl peds)	223	247	191	-24 (-10%)	+32 (+17%)	212

Note: excludes rejected claims and claims for interstate crashes

Claims involving acute hospitalisation over 14 days: 12 months to May 2013 (claim acceptance date) -
Continued

Category	2013	2012	2011	2013 v 2012		2013 v 2011		5 Year Av
Police Service Area (based on Local Government Area (see p.13))								
BALLARAT	12	16	15	-4	(-25%)	-3	(-20%)	12
BANYULE	12	9	13	+3	(+33%)	-1	(-8%)	11
BASS COAST	12	21	10	-9	(-43%)	+2	(+20%)	16
BAW BAW	7	18	7	-11	(-61%)	0	(0%)	9
BENALLA	14	14	20	0	(0%)	-6	(-30%)	16
BENDIGO	15	16	24	-1	(-6%)	-9	(-38%)	16
BOROONDARA	15	30	23	-15	(-50%)	-8	(-35%)	22
BRIMBANK	21	32	18	-11	(-34%)	+3	(+17%)	21
CAMPASPE	7	7	3	0	(0%)	+4	(+133%)	5
CARDINIA	13	15	19	-2	(-13%)	-6	(-32%)	17
CASEY	28	24	24	+4	(+17%)	+4	(+17%)	26
CENTRAL GOLDFIELDS	2	2	2	0	(0%)	0	(0%)	2
DAREBIN	20	14	17	+6	(+43%)	+3	(+18%)	18
EAST GIPPSLAND	8	16	15	-8	(-50%)	-7	(-47%)	13
FRANKSTON	10	17	17	-7	(-41%)	-7	(-41%)	17
GEELONG	39	28	26	+11	(+39%)	+13	(+50%)	29
GLEN EIRA	25	33	32	-8	(-24%)	-7	(-22%)	29
GREATER DANDENONG	20	34	25	-14	(-41%)	-5	(-20%)	26
HOBSONS BAY	10	11	9	-1	(-9%)	+1	(+11%)	9
HORSHAM	9	11	4	-2	(-18%)	+5	(+125%)	8
HUME	28	31	21	-3	(-10%)	+7	(+33%)	25
KINGSTON	20	20	16	0	(0%)	+4	(+25%)	19
KNOX	20	15	15	+5	(+33%)	+5	(+33%)	17
LA TROBE	12	18	18	-6	(-33%)	-6	(-33%)	13
MACEDON RANGES	17	13	17	+4	(+31%)	0	(0%)	17
MANNINGHAM	18	16	11	+2	(+13%)	+7	(+64%)	13
MARIBYRNONG	14	14	18	0	(0%)	-4	(-22%)	14
MAROONDAH	5	15	12	-10	(-67%)	-7	(-58%)	11
MELBOURNE	33	28	33	+5	(+18%)	0	(0%)	28
MELTON	19	13	11	+6	(+46%)	+8	(+73%)	12
MILDURA	7	12	7	-5	(-42%)	0	(0%)	7
MITCHELL	21	15	16	+6	(+40%)	+5	(+31%)	17
MONASH	17	25	24	-8	(-32%)	-7	(-29%)	22
MOONEE VALLEY	20	18	12	+2	(+11%)	+8	(+67%)	16
MOORABOOL	16	11	12	+5	(+45%)	+4	(+33%)	15
MORELAND	30	21	25	+9	(+43%)	+5	(+20%)	22
MORNINGTON PENINSULA	31	32	32	-1	(-3%)	-1	(-3%)	29
NILLUMBIK	10	5	5	+5	(+100%)	+5	(+100%)	6
NORTHERN GRAMPPIANS	10	6	5	+4	(+67%)	+5	(+100%)	6
PORT PHILLIP	7	16	6	-9	(-56%)	+1	(+17%)	12
SHEPPARTON	18	6	8	+12	(+200%)	+10	(+125%)	14
SOUTHERN GRAMPPIANS	8	8	11	0	(0%)	-3	(-27%)	8
STONNINGTON	10	22	20	-12	(-55%)	-10	(-50%)	15
SURF COAST	10	16	11	-6	(-38%)	-1	(-9%)	12
SWAN HILL	8	3	4	+5	(+167%)	+4	(+100%)	6
WANGARATTA	16	15	19	+1	(+7%)	-3	(-16%)	17
WARRNAMBOOL	13	20	10	-7	(-35%)	+3	(+30%)	13
WELLINGTON	10	7	13	+3	(+43%)	-3	(-23%)	10
WHITEHORSE	14	20	22	-6	(-30%)	-8	(-36%)	20
WHITTLESEA	20	30	14	-10	(-33%)	+6	(+43%)	21
WODONGA	7	16	4	-9	(-56%)	+3	(+75%)	10
WYNDHAM	23	25	12	-2	(-8%)	+11	(+92%)	18
YARRA	14	14	10	0	(0%)	+4	(+40%)	12
YARRA RANGES	27	34	33	-7	(-21%)	-6	(-18%)	30

Note: excludes rejected claims and claims for interstate crashes

Claims involving an acute hospital admission: 12 months to May 2013 (claim acceptance date)

Category	2013	2012	2011	2013 v 2012	2013 v 2011	5 Year Av
Overview						
Claims	5,219	6,028	5,668	-809	(-13%)	5,549
Sex						
Female	2,188	2,563	2,402	-375	(-15%)	2,329
Male	3,029	3,465	3,264	-436	(-13%)	3,219
Roaduser						
Driver	2,455	2,789	2,592	-334	(-12%)	2,508
Passenger	888	1,077	1,071	-189	(-18%)	1,021
Motorcyclist	754	1,005	953	-251	(-25%)	927
Pedestrian	629	659	653	-30	(-5%)	624
Cyclist	353	377	330	-24	(-6%)	335
Train/Tram	29	26	25	+3	(+12%)	24
Location						
Melbourne	3,447	4,071	3,819	-624	(-15%)	3,639
Rural Victoria	1,698	1,892	1,802	-194	(-10%)	1,736
Agegroup						
0-4	45	53	48	-8	(-15%)	49
5-15	184	195	187	-11	(-6%)	199
16-17	104	126	137	-22	(-17%)	131
18-20	460	574	552	-114	(-20%)	548
21-25	631	788	679	-157	(-20%)	693
26-29	392	444	450	-52	(-12%)	423
30-39	776	942	877	-166	(-18%)	891
40-49	780	893	868	-113	(-13%)	822
50-59	653	745	694	-92	(-12%)	668
60-69	469	541	498	-72	(-13%)	463
70+	725	727	678	-2	(-0%)	664
Alctime						
High (Melb)	1,514	1,870	1,746	-356	(-19%)	1,657
High (Rural)	699	814	798	-115	(-14%)	755
High (Vic)	2,213	2,684	2,544	-471	(-18%)	2,412
Low (Melb)	1,933	2,201	2,073	-268	(-12%)	1,982
Low (Rural)	999	1,078	1,004	-79	(-7%)	981
Low (Vic)	2,932	3,279	3,077	-347	(-11%)	2,963
Accident Type						
Intersection						
Adjacent direction	762	937	860	-175	(-19%)	840
Opposing direction	473	489	455	-16	(-3%)	455
Mid-block/other						
Head on	291	331	358	-40	(-12%)	320
Same direction	745	984	935	-239	(-24%)	841
Manoeuvre/o'taking	306	308	348	-2	(-1%)	316
On path	199	234	199	-35	(-15%)	213
Single vehicle	1,391	1,655	1,610	-264	(-16%)	1,576
Other (incl peds)	1,052	1,090	903	-38	(-3%)	969

Note: excludes rejected claims and claims for interstate crashes

Claims involving an acute hospital admission: 12 months to May 2013 (claim acceptance date) - Continued

Category	2013	2012	2011	2013 v 2012		2013 v 2011		5 Year Av
Police Service Area (based on Local Government Area (see p.13))								
BALLARAT	88	110	100	-22	(-20%)	-12	(-12%)	92
BANYULE	60	63	58	-3	(-5%)	+2	(+3%)	60
BASS COAST	64	102	66	-38	(-37%)	-2	(-3%)	74
BAW BAW	60	71	46	-11	(-15%)	+14	(+30%)	53
BENALLA	89	101	105	-12	(-12%)	-16	(-15%)	99
BENDIGO	101	119	98	-18	(-15%)	+3	(+3%)	95
BOROONDARA	116	139	143	-23	(-17%)	-27	(-19%)	132
BRIMBANK	139	193	127	-54	(-28%)	+12	(+9%)	142
CAMPASPE	36	43	37	-7	(-16%)	-1	(-3%)	37
CARDINIA	74	91	108	-17	(-19%)	-34	(-31%)	87
CASEY	205	246	227	-41	(-17%)	-22	(-10%)	220
CENTRAL GOLDFIELDS	10	8	6	+2	(+25%)	+4	(+67%)	9
DAREBIN	90	91	114	-1	(-1%)	-24	(-21%)	100
EAST GIPPSLAND	74	75	60	-1	(-1%)	+14	(+23%)	62
FRANKSTON	110	148	146	-38	(-26%)	-36	(-25%)	136
GEELONG	198	244	244	-46	(-19%)	-46	(-19%)	221
GLEN EIRA	154	180	181	-26	(-14%)	-27	(-15%)	163
GREATER DANDENONG	191	209	204	-18	(-9%)	-13	(-6%)	182
HOBSONS BAY	47	71	66	-24	(-34%)	-19	(-29%)	59
HORSHAM	35	39	36	-4	(-10%)	-1	(-3%)	31
HUME	132	151	156	-19	(-13%)	-24	(-15%)	144
KINGSTON	127	128	128	-1	(-1%)	-1	(-1%)	130
KNOX	84	115	136	-31	(-27%)	-52	(-38%)	115
LA TROBE	61	68	73	-7	(-10%)	-12	(-16%)	61
MACEDON RANGES	80	70	91	+10	(+14%)	-11	(-12%)	79
MANNINGHAM	72	74	61	-2	(-3%)	+11	(+18%)	67
MARIBYRNONG	61	100	79	-39	(-39%)	-18	(-23%)	76
MAROONDAH	52	79	69	-27	(-34%)	-17	(-25%)	68
MELBOURNE	248	244	227	+4	(+2%)	+21	(+9%)	217
MELTON	68	84	71	-16	(-19%)	-3	(-4%)	67
MILDURA	27	47	36	-20	(-43%)	-9	(-25%)	34
MITCHELL	93	86	71	+7	(+8%)	+22	(+31%)	81
MONASH	176	179	152	-3	(-2%)	+24	(+16%)	165
MOONEE VALLEY	105	119	84	-14	(-12%)	+21	(+25%)	100
MOORABOOL	101	95	82	+6	(+6%)	+19	(+23%)	99
MORELAND	129	159	147	-30	(-19%)	-18	(-12%)	134
MORNINGTON PENINSULA	118	178	186	-60	(-34%)	-68	(-37%)	157
NILLUMBIK	40	41	38	-1	(-2%)	+2	(+5%)	36
NORTHERN GRAMPPIANS	40	35	31	+5	(+14%)	+9	(+29%)	33
PORT PHILLIP	105	125	100	-20	(-16%)	+5	(+5%)	109
SHEPPARTON	75	56	61	+19	(+34%)	+14	(+23%)	68
SOUTHERN GRAMPPIANS	48	47	52	+1	(+2%)	-4	(-8%)	43
STONNINGTON	124	123	134	+1	(+1%)	-10	(-7%)	118
SURF COAST	48	67	87	-19	(-28%)	-39	(-45%)	72
SWAN HILL	28	27	19	+1	(+4%)	+9	(+47%)	29
WANGARATTA	97	94	104	+3	(+3%)	-7	(-7%)	100
WARRNAMBOOL	70	102	97	-32	(-31%)	-27	(-28%)	85
WELLINGTON	59	74	84	-15	(-20%)	-25	(-30%)	70
WHITEHORSE	95	113	147	-18	(-16%)	-52	(-35%)	115
WHITTLESEA	138	148	119	-10	(-7%)	+19	(+16%)	128
WODONGA	71	70	57	+1	(+1%)	+14	(+25%)	61
WYNDHAM	130	168	121	-38	(-23%)	+9	(+7%)	124
YARRA	88	116	103	-28	(-24%)	-15	(-15%)	101
YARRA RANGES	169	196	187	-27	(-14%)	-18	(-10%)	187

Note: excludes rejected claims and claims for interstate crashes

Fatalities: Victorian monthly totals since 1951

Year	Jan	Feb	Mar	Apr	May	Jun	Jul	Aug	Sep	Oct	Nov	Dec	Totals
1951							61	59	52	38	29	41	
1952	45	40	54	61	54	69	67	55	44	44	31	20	584
1953	23	28	54	58	49	42	50	37	44	27	36	32	480
1954	44	42	28	60	55	36	63	33	25	52	30	41	509
1955	44	36	45	55	48	56	64	44	44	32	40	40	548
1956	34	48	51	67	53	65	71	47	39	39	44	48	606
1957	50	41	46	58	52	54	57	53	51	46	32	49	589
1958	50	38	42	58	54	41	54	53	57	40	57	52	596
1959	50	57	61	50	75	55	42	48	52	55	63	63	671
1960	49	53	57	76	70	70	67	62	61	77	52	66	760
1961	63	57	68	74	58	68	78	82	59	62	60	65	794
1962	65	41	76	78	72	80	70	77	62	53	64	70	808
1963	67	56	65	85	66	68	77	55	55	58	61	67	780
1964	73	71	78	71	83	89	80	89	67	66	62	75	904
1965	63	64	86	88	80	87	79	69	81	77	68	87	929
1966	75	59	75	103	74	86	87	80	75	66	90	85	955
1967	61	79	91	97	81	71	59	67	70	68	60	83	887
1968	70	78	86	78	73	76	73	77	72	80	81	105	949
1969	79	68	79	87	86	77	87	83	87	83	94	101	1,011
1970	85	84	106	80	87	88	110	106	78	95	68	74	1,061
1971	83	75	77	68	76	86	85	72	78	73	74	76	923
1972	61	62	75	82	75	71	98	85	83	62	80	81	915
1973	75	75	95	85	64	66	61	85	89	88	66	86	935
1974	56	62	81	60	70	73	67	62	53	70	80	72	806
1975	67	65	87	73	97	94	57	75	69	66	71	89	910
1976	79	78	88	78	69	79	60	70	82	78	77	100	938
1977	65	71	89	79	65	79	70	91	68	74	96	107	954
1978	75	54	95	63	64	69	68	77	65	84	83	72	869
1979	63	60	86	75	45	64	66	75	69	79	72	93	847
1980	48	55	66	59	47	56	60	53	45	58	61	49	657
1981	69	60	58	61	74	65	61	63	68	71	59	57	766
1982	55	53	59	59	67	45	47	71	53	69	65	66	709
1983	42	59	53	63	62	61	65	51	59	43	54	52	664
1984	65	48	58	50	56	48	46	50	71	53	55	58	658
1985	56	47	50	65	75	50	51	50	58	61	56	64	683
1986	56	50	70	69	59	53	42	54	54	52	59	51	669
1987	62	43	57	52	63	59	62	49	62	61	55	80	705
1988	49	58	69	54	79	50	54	52	64	59	43	70	701
1989	76	65	80	59	67	73	52	65	82	50	41	66	776
1990	48	44	55	39	56	64	41	34	48	35	40	44	548
1991	45	39	70	30	34	29	44	47	41	36	35	53	503
1992	34	33	34	47	33	29	23	27	28	38	30	40	396
1993	27	40	37	39	44	33	33	27	34	39	43	40	436
1994	36	31	44	35	27	33	29	37	17	27	32	30	378
1995	38	35	26	33	34	41	27	34	34	32	38	46	418
1996	40	47	35	38	28	29	30	35	49	24	33	30	418
1997	36	25	30	30	40	22	39	26	26	29	39	35	377
1998	29	29	32	36	31	22	40	19	37	36	49	30	390
1999	32	31	35	35	34	24	35	26	28	38	29	37	384
2000	32	26	46	32	39	32	33	29	36	29	44	29	407
2001	44	30	31	32	31	41	34	37	35	51	41	37	444
2002	32	31	45	31	45	32	27	25	31	30	31	37	397
2003	21	41	36	28	31	28	20	23	23	24	24	31	330
2004	32	22	30	30	46	28	27	26	22	28	25	27	343
2005	33	27	47	21	29	23	30	25	25	33	17	36	346
2006	24	37	23	23	27	23	25	22	43	20	31	39	337
2007	23	23	32	25	26	28	28	20	23	37	26	41	332
2008	28	20	37	25	25	20	27	27	18	25	26	25	303
2009	31	18	23	32	19	30	19	21	14	28	21	34	290
2010	26	25	23	20	31	26	26	18	17	36	12	28	288
2011	18	20	34	31	30	24	25	14	12	22	30	27	287
2012	30	20	25	19	23	22	17	25	17	34	26	24	282
2013	14	24	24	19	18	13	24	20	19	14	24		
Ave	49	47	56	54	54	52	52	50	50	50	49	56	625
Max	85	84	106	103	97	94	110	106	89	95	96	107	1,061
Min	14	18	23	19	18	13	17	14	12	14	12	20	282

Fatalities by Week (2007 to 2013)

Week Ending	2007	2008	2009	2010	2011	2012	2013	Cumulative 2013	% Change 2013-2012	12 Month Moving Total
6-Jan	3	1	3	1	2	1	2	2	0%	283
13-Jan	2	8	11	6	1	3	3	5	+67%	283
20-Jan	7	5	6	1	6	9	5	10	+11%	279
27-Jan	5	4	2	9	4	7	4	14	+8%	276
3-Feb	5	8	8	6	4	9	6	20	+18%	273
10-Feb	7	5	1	9	8	4	7	27	+8%	276
17-Feb	4	4	10	5	3	2	4	31	+11%	278
24-Feb	10	4	3	8	5	10	6	37	+12%	274
3-Mar	3	8	5	4	4	4	2	39	+5%	272
10-Mar	9	8	2	6	8	1	5	44	-2%	276
17-Mar	9	5	6	5	6	4	5	49	-4%	277
24-Mar	3	13	3	4	9	12	10	59	-2%	275
31-Mar	8	7	7	8	8	4	3	62	-9%	274
7-Apr	4	10	8	5	5	7	4	66	-10%	271
14-Apr	11	3	5	4	12	6	5	71	-16%	270
21-Apr	4	6	8	6	5	2	5	76	-16%	273
28-Apr	3	6	10	4	6	6	5	81	-16%	272
5-May	7	5	6	4	7	2	5	86	-17%	275
12-May	3	7	7	3	4	10	4	90	-16%	269
19-May	6	4	4	9	7	2	0	90	-21%	267
26-May	8	8	1	6	11	5	2	92	-26%	264
2-Jun	6	6	3	12	4	5	11	103	-20%	270
9-Jun	15	2	7	2	5	4	3	106	-21%	269
16-Jun	3	6	6	7	9	6	0	106	-26%	263
23-Jun	4	4	8	8	3	4	6	112	-23%	265
30-Jun	7	7	6	5	6	7	0	112	-26%	258
7-Jul	2	5	7	8	5	4	6	118	-25%	260
14-Jul	9	10	9	4	10	2	7	125	-25%	265
21-Jul	7	2	2	3	5	4	3	128	-26%	264
28-Jul	6	3	5	5	8	5	5	133	-26%	264
4-Aug	5	8	3	10	2	5	8	141	-23%	267
11-Aug	2	8	3	7	4	2	1	142	-24%	266
18-Aug	2	6	11	3	6	4	5	147	-23%	267
25-Aug	4	3	4	5	1	5	4	151	-22%	266
1-Sep	11	7	1	2	1	10	5	156	-20%	261
8-Sep	3	5	4	3	3	5	5	161	-18%	261
15-Sep	7	3	1	4	3	4	3	164	-18%	260
22-Sep	4	6	7	1	3	6	3	167	-18%	257
29-Sep	8	6	2	6	1	4	8	175	-14%	261
6-Oct	5	6	2	4	5	2	3	178	-15%	262
13-Oct	12	8	2	12	7	8	2	180	-17%	256
20-Oct	6	4	8	7	2	10	3	183	-16%	249
27-Oct	8	4	9	8	3	8	2	185	-16%	243
3-Nov	6	4	8	6	7	5	7	192	-16%	245
10-Nov	6	4	4	5	5	5	8	200	-14%	248
17-Nov	7	7	6	0	12	7	2	202	-18%	243
24-Nov	4	10	6	3	8	7	8	210	-17%	244
1-Dec	7	3	4	3	5	5	4	214	-17%	243
8-Dec	8	4	5	7	7	8				
15-Dec	16	9	5	6	6	7				
22-Dec	5	3	11	6	7	4				
29-Dec	8	9	10	9	6	4				
31-Dec	8	2	5	4	3	6				
Total	332	303	290	288	287	282				

Alcohol Related Fatalities

NOTE: UPDATES TO THIS DATA WERE NOT AVAILABLE AT TIME OF REPORT

- 24% of fatally injured and tested drivers and riders had a BAC at 0.05 g/100ml or over (41 of 172) compared to 25% over the previous 12 month period (43 of 169).
- In Melbourne, 21 drivers/riders fatally injured and tested were at or over 0.05, with 38% of these having a BAC in excess of 0.15 g/100ml. Across rural Victoria, 20 drivers/riders fatally injured and tested were at or over 0.05, with 65% of these having a BAC over 0.15.
- Of the 41 drivers and riders fatally injured and tested at or over 0.05, 15% (6) were aged under 21, 39% (16) were aged 21-29, 27% (11) were aged 30-39 and 20% (8) were aged 40 years and over. In the previous year (43 fatally injured) the corresponding figures were 19% (8), 28% (12), 19% (8) and 35% (15), respectively.

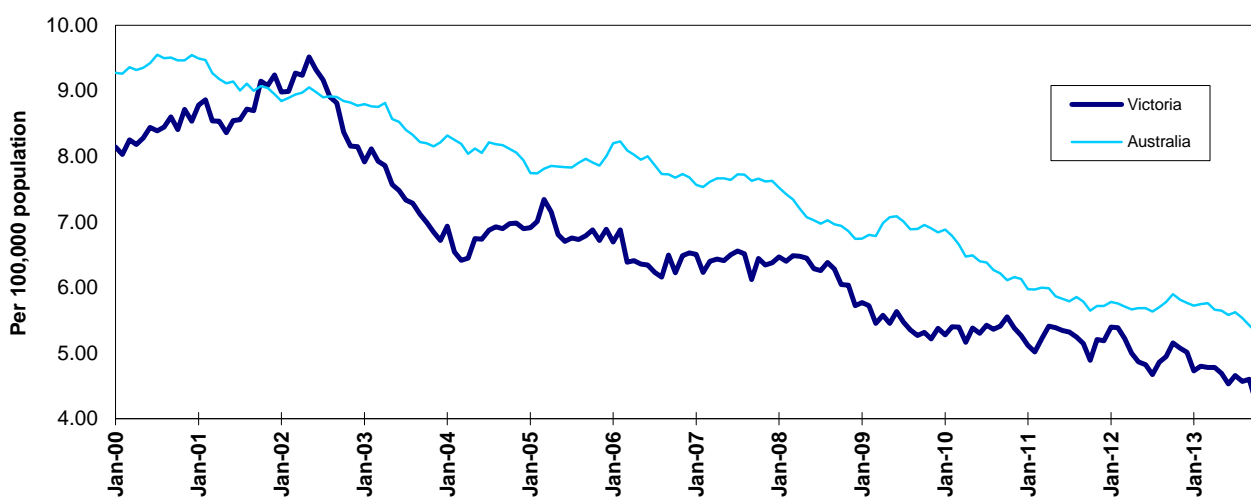
BAC Fatalities (12 months to April 2010)

Category	2010	2009	2008	2010 v 2009		2010 v 2008		5 Year Av
Melbourne Drivers and Riders								
<0.05	55	63	63	(-8)	(-13%)	(-8)	(-13%)	62
[a] at 0.05 & above	21	17	25	(+4)	(+24%)	(-4)	(-16%)	21
% at 0.05 & above	(28%)	(21%)	(28%)					(+25%)
[b] >0.15	8	10	12	(-2)	(-20%)	(-4)	(-33%)	9
%>0.15	(11%)	(13%)	(14%)					(+11%)
[b] as a % of [a]	(38%)	(59%)	(48%)					(+43%)
BAC Unknown	5	3	1	(+2)	(+67%)	(+4)	(+400%)	3
Country Drivers and Riders								
<0.05	76	63	90	(+13)	(+21%)	(-14)	(-16%)	78
[a] at 0.05 & above	20	26	32	(-6)	(-23%)	(-12)	(-38%)	26
% at 0.05 & above	(21%)	(29%)	(26%)					(+25%)
[b] >0.15	13	17	20	(-4)	(-24%)	(-7)	(-35%)	17
%>0.15	(14%)	(19%)	(16%)					(+16%)
[b] as a % of [a]	(65%)	(65%)	(63%)					(+64%)
BAC Unknown	7	2	1	(+5)	(+250%)	(+6)	(+600%)	5
Victorian Total Drivers and Riders								
<0.05	131	126	153	(+5)	(+4%)	(-22)	(-14%)	140
[a] at 0.05 & above	41	43	57	(-2)	(-5%)	(-16)	(-28%)	47
% at 0.05 & above	(24%)	(25%)	(27%)					(+25%)
[b] >0.15	21	27	32	(-6)	(-22%)	(-11)	(-34%)	26
%>0.15	(12%)	(16%)	(15%)					(+14%)
[b] as a % of [a]	(51%)	(63%)	(56%)					(+54%)
BAC Unknown	12	5	2	(+7)	(+140%)	(+10)	(+500%)	7
Victorian Total Pedestrians								
<0.05	32	35	38	(-3)	(-9%)	(-6)	(-16%)	33
[a] at 0.05 & above	8	21	9	(-13)	(-62%)	(-1)	(-11%)	14
% at 0.05 & above	(20%)	(38%)	(19%)					(+30%)
[b] >0.15	3	10	8	(-7)	(-70%)	(-5)	(-63%)	9
%>0.15	(8%)	(18%)	(17%)					(+19%)
[b] as a % of [a]	(38%)	(48%)	(89%)					(+62%)
BAC Unknown	6	4	2	(+2)	(+50%)	(+4)	(+200%)	4

The National Picture

State	Fatalities (12 months to November)					2013 v 2012	
	2013	2012	2011	2010			
NSW	339	381	349	416	-42	(-11%)	
VIC	237	285	288	294	-48	(-17%)	
QLD	274	283	269	243	-9	(-3%)	
SA	103	90	104	118	+13	(+14%)	
WA	165	183	188	187	-18	(-10%)	
TAS	35	29	26	34	+6	(+21%)	
NT	40	50	44	47	-10	(-20%)	
ACT	7	11	7	18	-4	(-36%)	
AUST TOTAL	1,201	1,312	1,275	1,357	-111	(-8%)	
AUST minus VIC	963	1,027	987	1,063	-64	(-6%)	

State	Fatalities per 10,000 registered vehicles (12 months to November)			Fatalities per 100,000 population (12 months to November)		
	2013	2012	2011	2013	2012	2011
NSW	0.67	0.78	0.73	4.64	5.23	4.84
VIC	0.54	0.66	0.68	4.23	5.07	5.21
QLD	0.75	0.80	0.78	6.00	6.26	6.02
SA	0.79	0.70	0.82	6.22	5.47	6.35
WA	0.80	0.91	0.97	6.78	7.61	8.01
TAS	0.80	0.67	0.61	6.83	5.64	5.09
NT	2.65	3.48	3.18	17.01	21.53	19.03
ACT	0.25	0.41	0.27	1.87	2.94	1.91
AUST TOTAL	0.69	0.78	0.77	5.27	5.82	5.72
AUST minus VIC	0.75	0.82	0.80	5.64	6.05	5.88



Victoria v Australia - 12 Month Moving Fatality Rate

Booze-Bus Random Breath Testing

12 months to September 2013 (monthly totals)*

	2012			2013								
	Oct	Nov	Dec	Jan	Feb	Mar	Apr	May	Jun	Jul	Aug	Sep
Melbourne	91,425	96,830	98,007	93,928	79,064	86,312	89,067	80,338	84,055	74,595	72,612	81,321
Country	10,101	16,705	13,751	7,046	7,258	8,046	9,786	8,335	4,227	8,870	4,343	1,891
Vic Total	101,526	113,535	111,758	100,974	86,322	94,358	98,853	88,673	88,282	83,465	76,955	83,212

12 months to September 2013 vs previous 12 months

	2013	2012	2011	2013 v 2012		2013 v 2011	
Melbourne	1,027,554	1,034,250	924,897	-6696	(-1%)	+102657	(+11%)
Country	100,359	118,832	160,608	-18473	(-16%)	-60249	(-38%)
Vic Total	1,127,913	1,153,082	1,085,505	-25169	(-2%)	+42408	(+4%)

*Due to police industrial action, reliable random breath testing data is not available from May to October 2011. For the rolling 12 month totals, 2010 data has been used as a substitute in the relevant months.

Mobile Safety Camera Data

Speed Infringements Issued from Mobile Cameras (monthly totals)

Monthly Average = 40,325

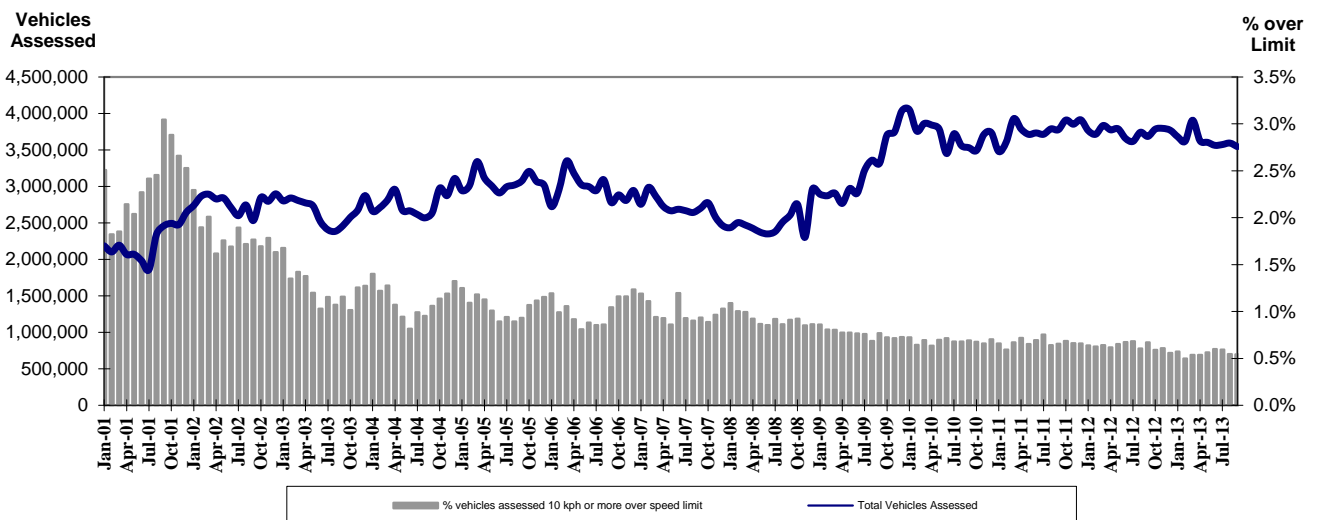
2012	2013											
	Oct	Nov	Dec	Jan	Feb	Mar	Apr	May	Jun	Jul	Aug	Sep
	45,757	45,777	29,434	52,184	39,407	36,296	40,184	42,428	37,432	43,863	35,702	35,440

Excessive Speed Infringements (ESI) Issued from Mobile Cameras (monthly totals)

Monthly Average = 347

2012	2013											
	Oct	Nov	Dec	Jan	Feb	Mar	Apr	May	Jun	Jul	Aug	Sep
	396	356	256	363	341	292	342	398	361	387	339	338

Notes: An ESI is defined as 25km/h over the speed limit except in a 110km/h zone where it is 20km/h over the limit.



Mobile Safety Cameras – Vehicles assessed and percentage of vehicles assessed 10km/h or more over speed limit per month

Explanations and References

Hi-AlcTime is those times of the day and week (*shaded* in the table below) when casualty crashes are ten times more likely to involve alcohol than casualty crashes at other (Lo-AlcTime) times.

	12am - 6am	6am - 8am	8am - 10am	10am - 2pm	2pm - 4pm	4pm - 6pm	6pm - 12pm
Monday							
Tuesday							
Wednesday							
Thursday							
Friday							
Saturday							
Sunday							

Police Service Areas align with Local Government Areas. Most Police Service Areas are equivalent to a single Local Government Area, while the remainder comprise two or three Local Government Areas.

Police Service Area	Local Government Area(s)	Police Service Area	Local Government Area(s)
BALLARAT	BALLARAT, PYRENEES	MAROONDAH	MAROONDAH
BANYULE	BANYULE	MELBOURNE	MELBOURNE
BASS COAST	BASS COAST, SOUTH GIPPSLAND	MELTON	MELTON
BAW BAW	BAWBAW	MILDURA	MILDURA
BENALLA	BENALLA, MANSFIELD, MURRINDINDI	MITCHELL	MITCHELL, STRATHBOGIE
BENDIGO	GREATER BENDIGO	MONASH	MONASH
BOROONDARA	BOROONDARA	MOONEE VALLEY	MOONEE VALLEY
BRIMBANK	BRIMBANK	MOORABOOL	GOLDEN PLAINS, HEPBURN, MOORABOOL
CAMPASPE	CAMPASPE	MORELAND	MORELAND
CARDINIA	CARDINIA	MORNINGTON PENINSULA	MORNINGTON PENINSULA
CASEY	CASEY	NILLUMBIK	NILLUMBIK
CENTRAL GOLDFIELDS	CENTRAL GOLDFIELDS, LODDON	NORTHERN GRAMPIANS	ARARAT, NORTHERN GRAMPIANS, YARRIAMIACK
GREATER DANDENONG	GREATER DANDENONG	PORT PHILLIP	PORT PHILLIP
DAREBIN	DAREBIN	SHEPPARTON	GREATER SHEPPARTON
EAST GIPPSLAND	EAST GIPPSLAND	SOUTHERN GRAMPIANS	GLENELG, SOUTHERN GRAMPIANS
FRANKSTON	FRANKSTON	STONNINGTON	STONNINGTON
GEELONG	GREATER GEELONG, QUEENSCLIFF	SURFCOAST	SURFCOAST, COLAC OTWAY
GLENEIRA	GLENEIRA, BAYSIDE	SWANHILL	BULOKE, GANNAWARRA, SWAN HILL
HOBSONS BAY	HOBSONSBAY	WANGARATTA	ALPINE, MOIRA, WANGARATTA
HORSHAM	HINDMARSH, HORSHAM, WESTWIMMERA	WARRNAMBOOL	CORANGAMITE, MOYNE, WARRNAMBOOL
HUME	HUME	WELLINGTON	WELLINGTON
KINGSTON	KINGSTON	WHITEHORSE	WHITEHORSE
KNOX	KNOX	WHITTLESEA	WHITTLESEA
LATROBE	LATROBE	WODONGA	INDIGO, TOWONG, WODONGA
MACEDON RANGES	MOUNT ALEXANDER, MACEDON RANGES	WYNDHAM	WYNDHAM
MANNINGHAM	MANNINGHAM	YARRA	YARRA
MARIBYRNONG	MARIBYRNONG	YARRA RANGES	YARRA RANGES

Useful Internet Sites

TAC Sites

- TAC Safety (Road Safety) www.tacsafety.com.au
- TAC How safe is your car www.howsafeisyourcar.com.au
- TAC Learners Log www.learnerslog.com.au
- TAC Motorcycle Safety Website www.spokes.com.au
- TAC Corporate site www.tac.vic.gov.au

Victorian Sites:

- VicRoads www.vicroads.vic.gov.au
- Victoria Police www.police.vic.gov.au
- Parliamentary Road Safety Committee www.parliament.vic.gov.au/rsc/
- ARRB Transport Research www.arrb.com.au
- RACV www.racv.com.au
- Monash University Accident Research Centre www.monash.edu.au/muarc
- Roadsafe www.roadsafe.org.au
- Cameras Save Lives www.camerassavelives.vic.gov.au

National and Interstate Sites:

- Australian Transport Safety Bureau www.atsb.gov.au
- Roads and Traffic Authority (NSW) www.rta.nsw.gov.au
- Queensland Transport - Road Safety transport.qld.gov.au/Home/Safety/Road
- Department of Transport (SA) www.transport.sa.gov.au/index.htm
- Main Roads Western Australia - Road Safety www.mrwa.wa.gov.au

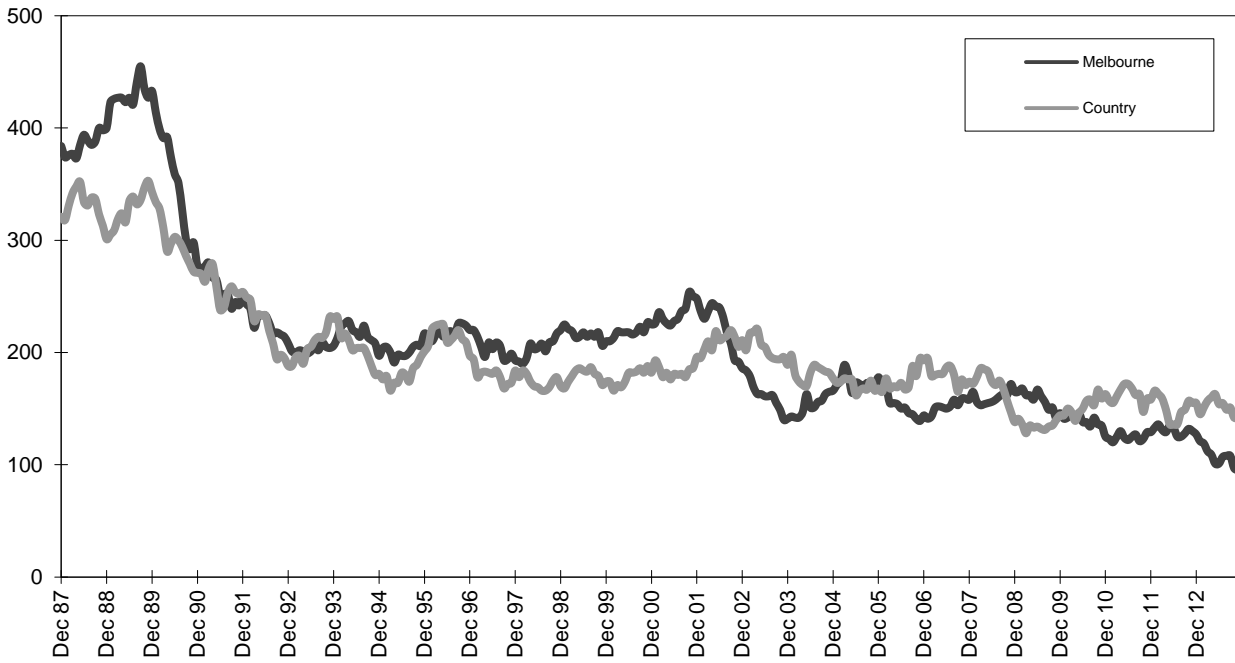
International Sites:

- National Highway Traffic Safety Admin (USA) www.nhtsa.dot.gov
- Swedish Road and Transport Institute (VTI) www.vti.se
- SWOV Institute for Road Safety Research www.swov.nl

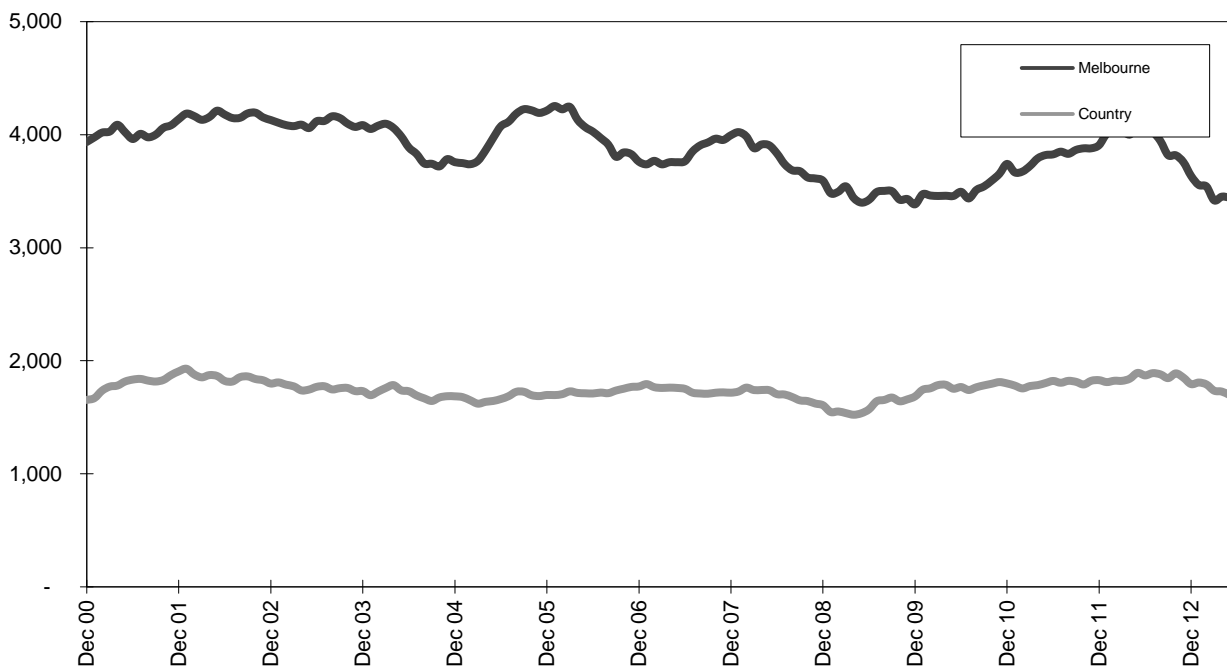
Related Sites:

- Australian Drug Foundation www.adf.org.au
- Amy Gillett Foundation www.amygillett.org.au

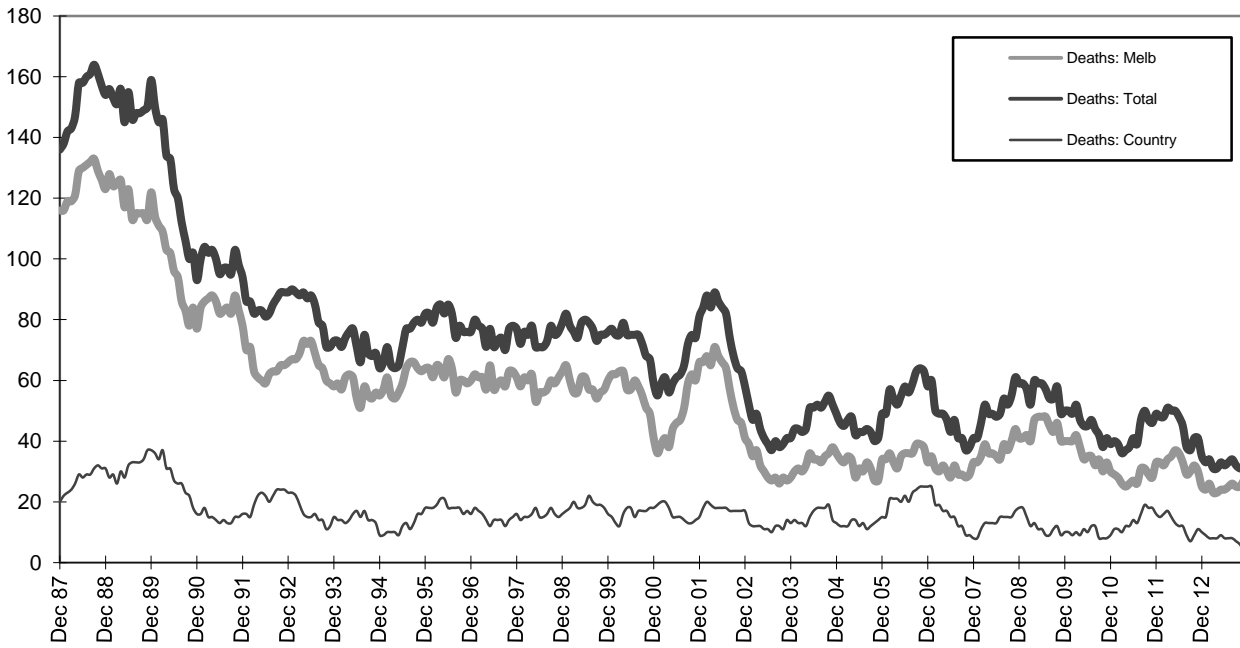
Figures



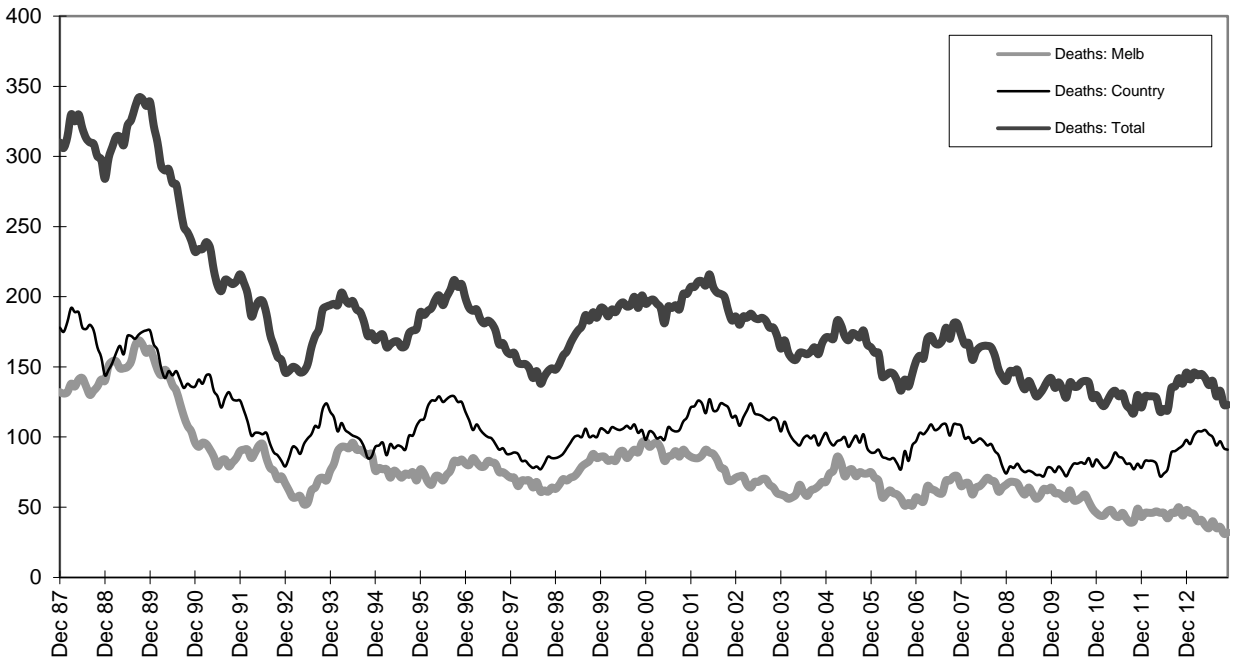
Graph 1a - Melbourne/country fatalities



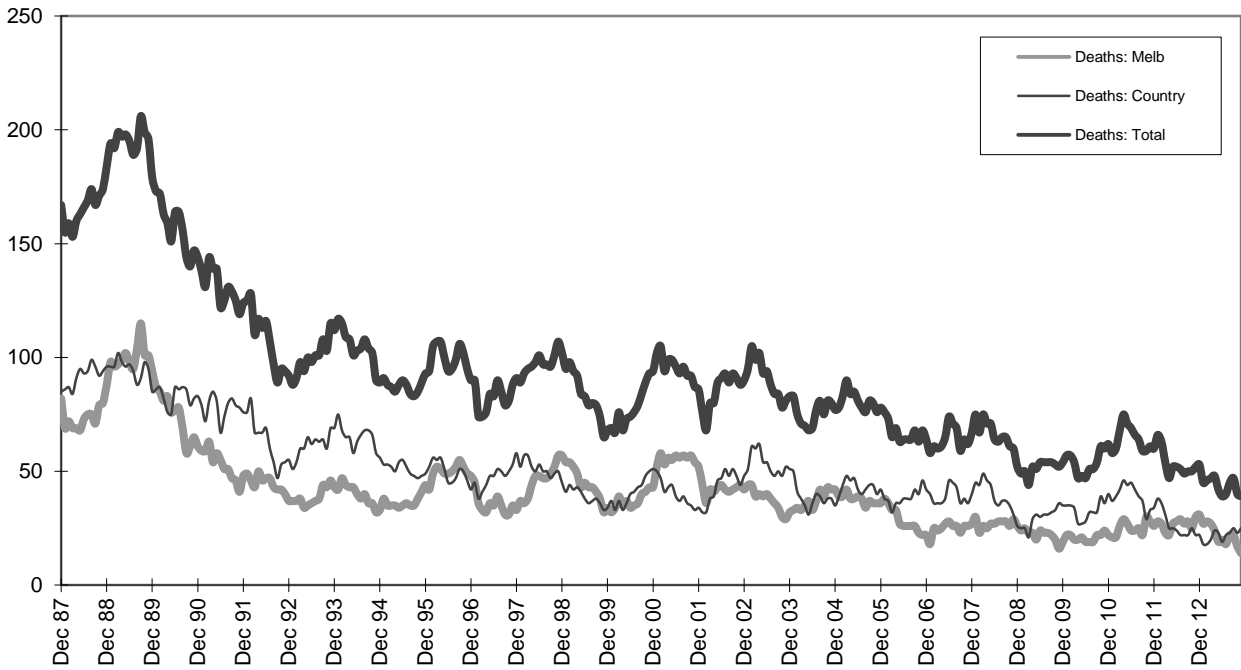
Graph 1b - Melbourne/country Claims involving an acute hospital admission



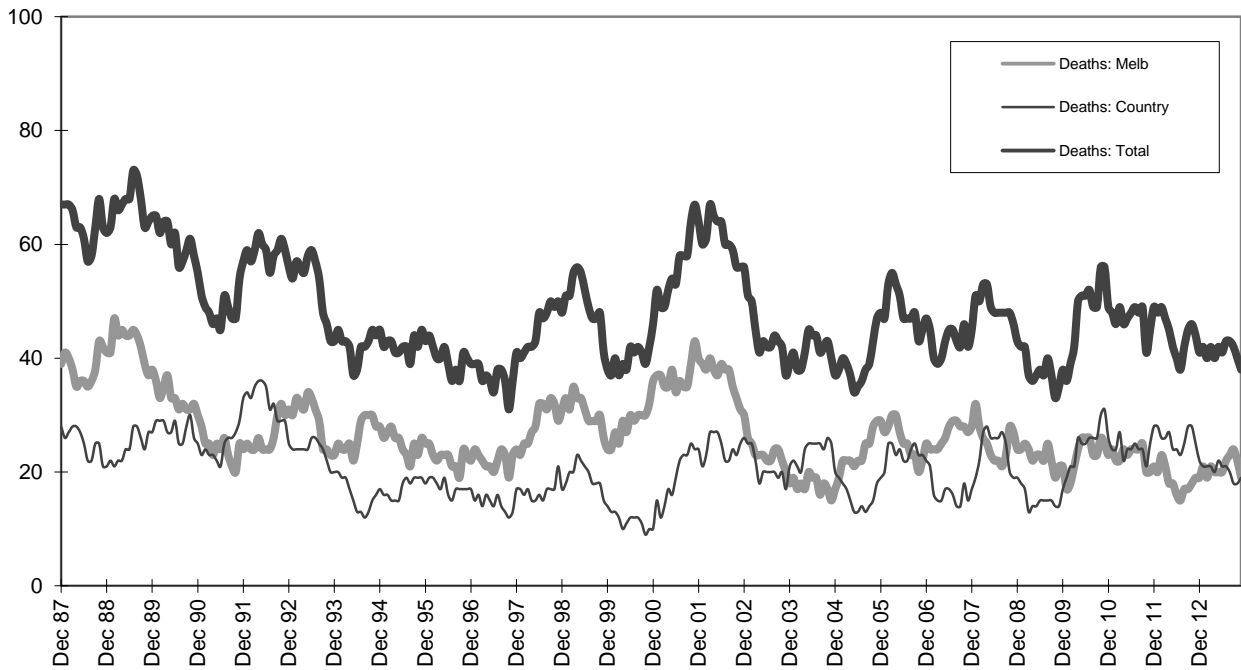
Graph 2a - Pedestrian fatalities (Melbourne/country)



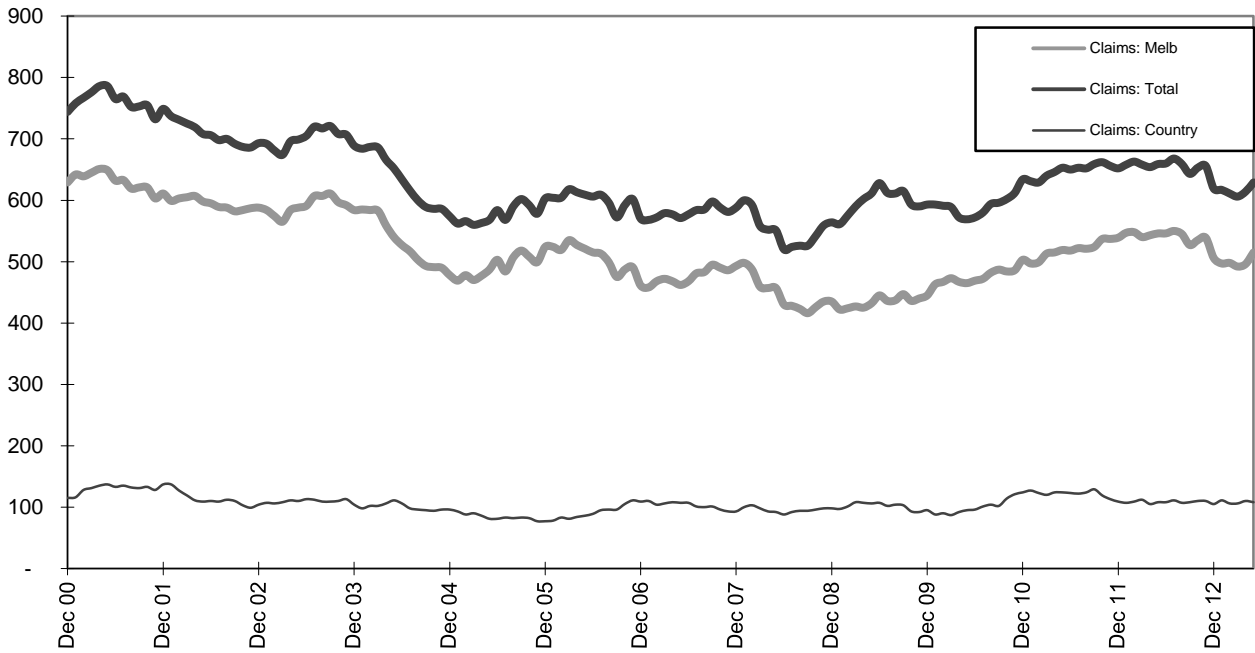
Graph 2b - Driver fatalities (Melbourne/country)



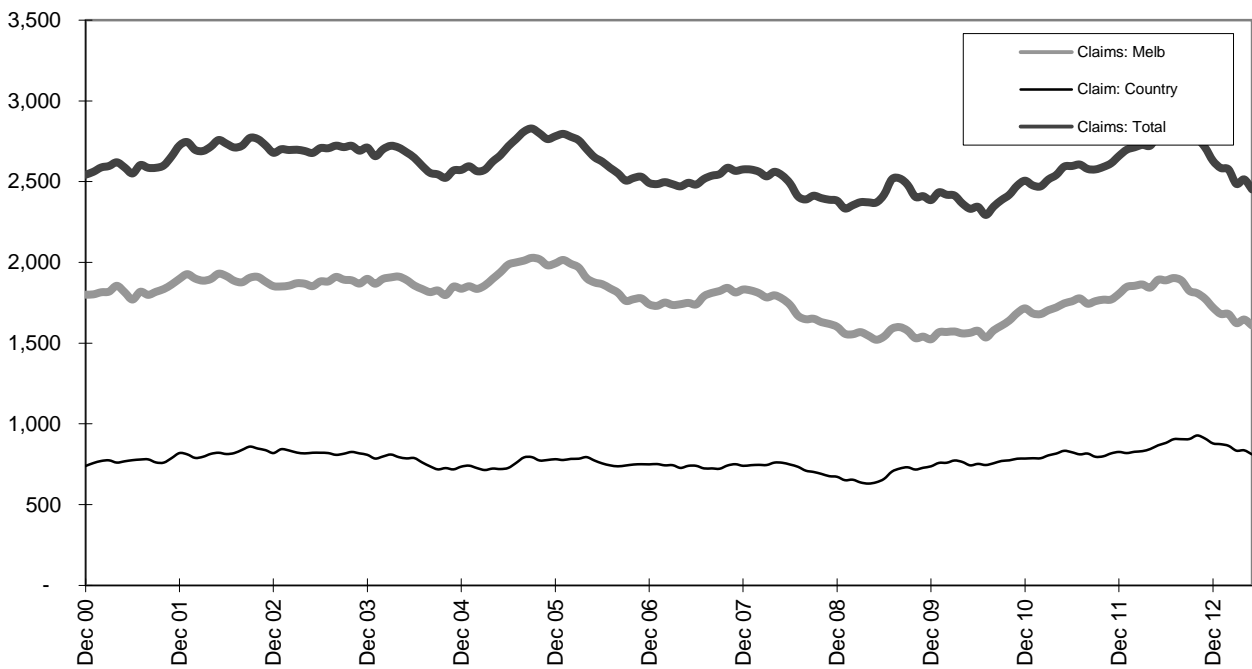
Graph 2c - Passenger fatalities (Melbourne/country)



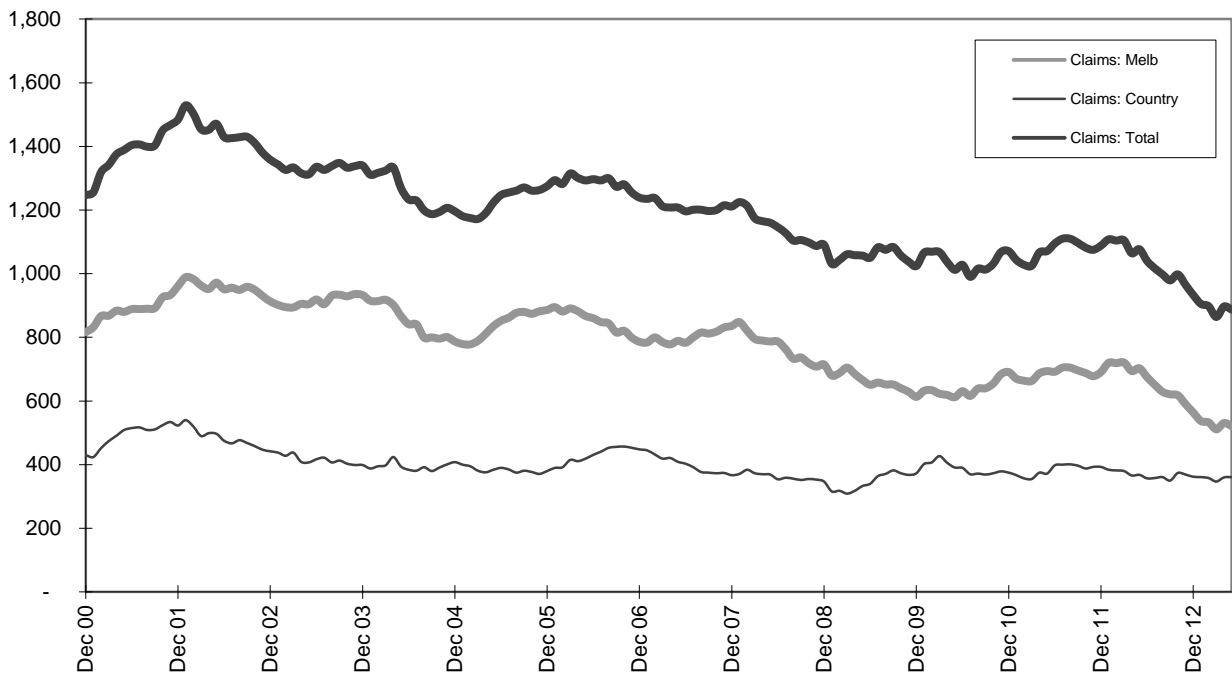
Graph 2d - Motorcyclist fatalities (Melbourne/country)



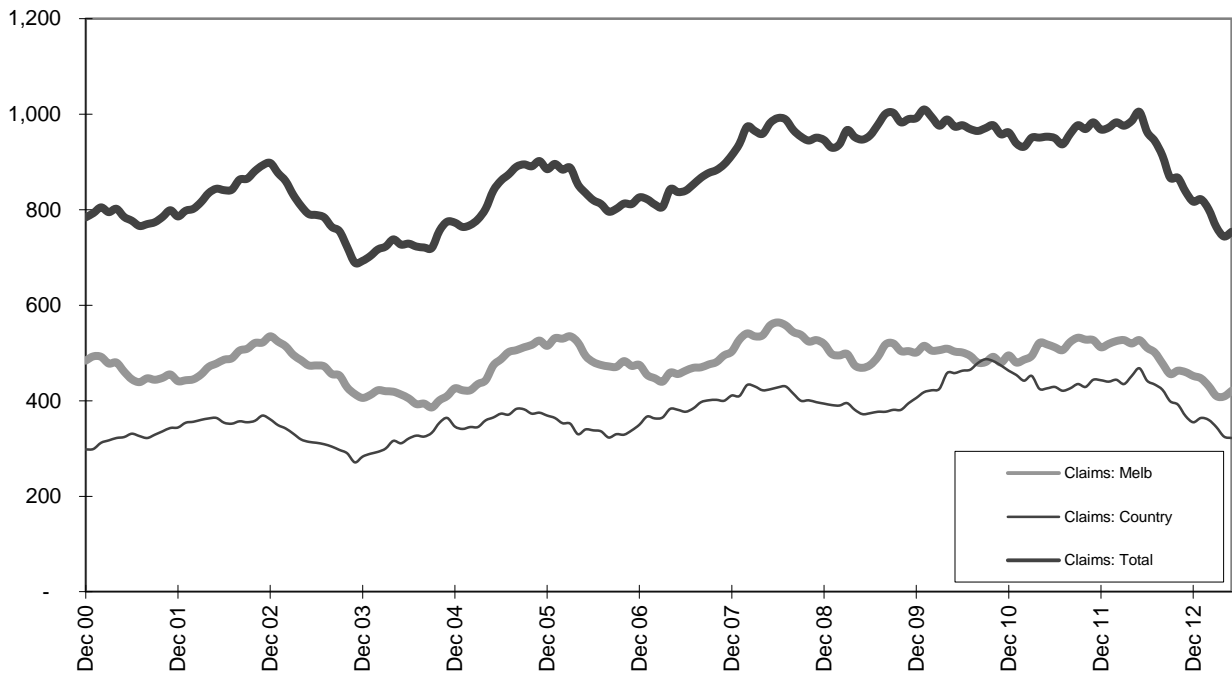
Graph 3a - Pedestrian Claims involving an acute hospital admission (Melbourne/country)



Graph 3b - Driver Claims involving an acute hospital admission (Melbourne/country)



Graph 3c - Passenger Claims involving an acute hospital admission (Melbourne/country)



Graph 3d - Motorcyclist Claims involving an acute hospital admission (Melbourne/country)