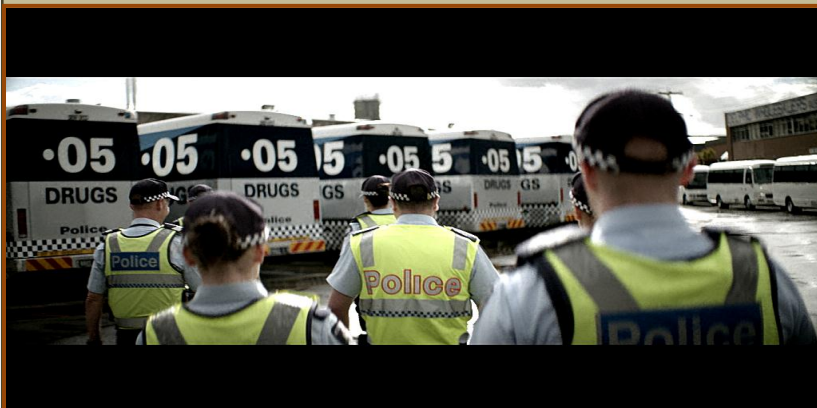
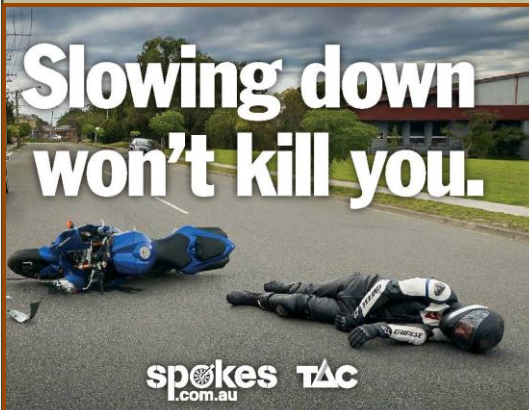


ROAD SAFETY STATISTICAL SUMMARY

December 2013



**TRANSPORT
ACCIDENT
COMMISSION**

60 Brougham Street
Geelong Vic 3220
PO Box 742
Geelong Vic 3220
Ausdoc DX 216079 Geelong

Telephone 1300 654 329
STD Toll Free 1800 332 556
Fax: 03 9656 9300
www.tac.vic.gov.au
ABN 22 033 947 623

Contents

Status Report.....	4
Fatalities.....	4
Claims involving acute hospitalisation over 14 days and an acute hospital admission*	5
Fatalities: 12 months to December 2013	6
Claims involving acute hospitalisation over 14 days: 12 months to June 2013 (claim acceptance date).....	8
Claims involving an acute hospital admission: 12 months to June 2013 (claim acceptance date).....	10
Fatalities: Victorian monthly totals since 1951	12
Fatalities by Week (2007 to 2013).....	13
Alcohol Related Fatalities.....	14
The National Picture	15
Booze-Bus Random Breath Testing	16
Mobile Safety Camera Data	16
Explanations and References	17
Useful Internet Sites.....	18
Figures	19

Note about the data in this report

- All data provided in this report is the data most recently available at time of production. Fatalities, breath-test data and safety camera data are updated to the end of report month. A 6-month lag applies to TAC claims data, and a 2-month lag applies to alcohol related fatalities data.
- Reported data will have one extra day of exposure for leap years.
- Data is subject to revision as additional information about known accidents/claims is received, and as new accident/claim reports are received and processed.

*An acute hospital admission refers to a hospital admission that occurred within 7 days of accident.

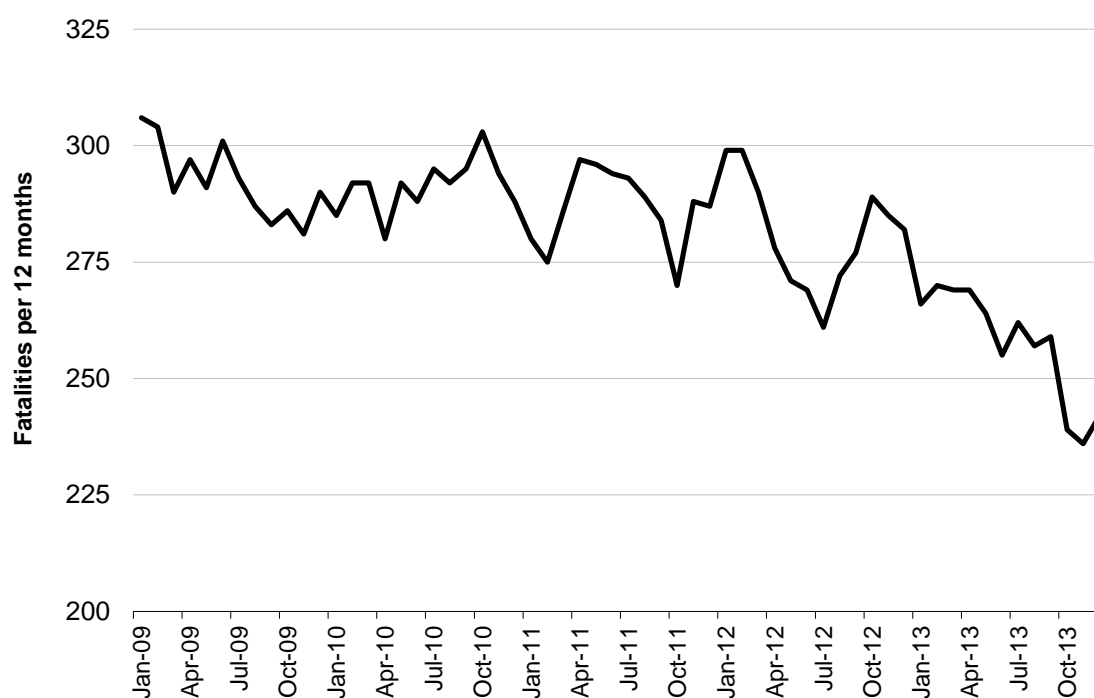
Status Report

Fatalities

- The number of road fatalities in 2013 stands at 242, 14% less than in 2012 (282).
- 30 people were fatally injured in December 2013 on Victorian roads. This compares to 24 in December 2012.

Fatalities (rolling 12 month, to end December 2013)

Category	2013	2012	2011	2013 v 2012		2013 v 2011		5 Year Av
Fatal Injuries (Rolling 12 Month Total)								
Fatal (to December)	242	282	287	-40	(-14%)	-45	(-16%)	278
per 10,000 veh	0.55	0.65	0.68	-0.10	(-15%)	-0.13	(-19%)	0.67
per 100,000 pop	4.22	5.01	5.19	-0.79	(-16%)	-0.97	(-19%)	5.12
Accidents (Rolling 12 Month Total)								
Fatal (to December)	224	261	259	-37	(-14%)	-35	(-14%)	254
per 10,000 veh	0.51	0.60	0.61	-0.09	(-15%)	-0.10	(-16%)	0.62
per 100,000 pop	3.90	4.64	4.68	-0.74	(-16%)	-0.78	(-17%)	4.70

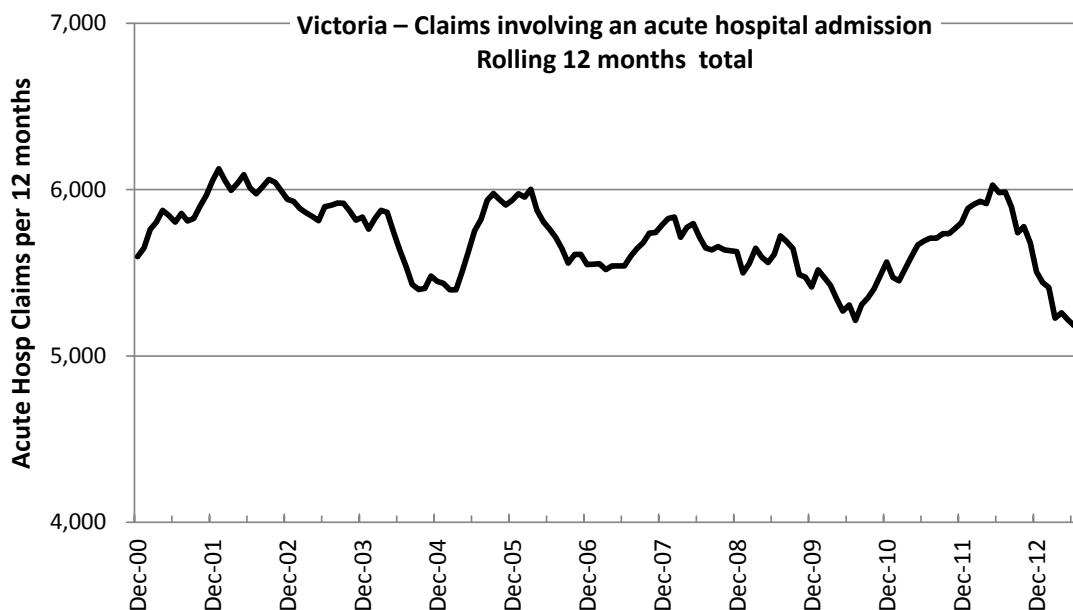
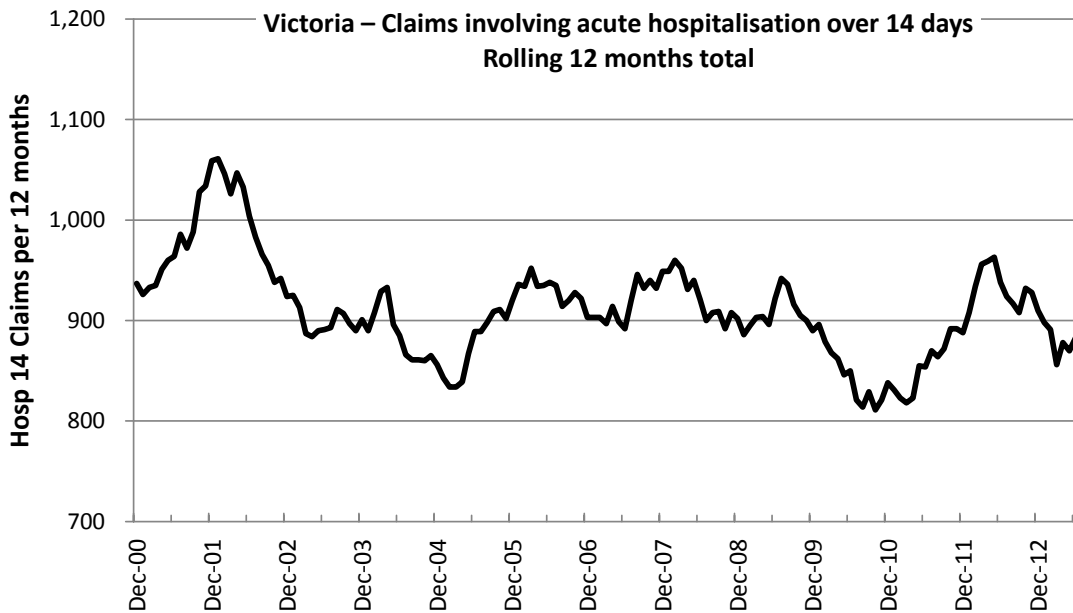


Victoria – Fatalities, rolling 12 months total

Claims involving acute hospitalisation over 14 days and an acute hospital admission*

(by claim acceptance date – rolling 12 month, to midnight 30 June 2013)

Category	2013	2012	2011	2013 vs. 2012		2013 vs. 2011		5 Year Av
Claims involving an acute hospitalisation over 14 days (Rolling 12 Month Total)								
Claims (to June)	883	938	854	-55	(-6%)	+29	(+3%)	889
per 100,000 pop	15.5	16.8	15.5	-1.3	(-8%)	0.0	(+0%)	16.2
per 10,000 veh	2.0	2.2	2.0	-0.2	(-9%)	0.0	(+0%)	2.1
All claims involving an acute hospitalisation (Rolling 12 Month Total)								
Claims (to June)	5,183	5,982	5,692	-799	(-13%)	-509	(-9%)	5,555
per 100,000 pop	91.2	107.4	103.5	-16.2	(-15%)	-12.3	(-12%)	102.3
per 10,000 veh	11.9	14.0	13.6	-2.1	(-15%)	-1.7	(-13%)	13.5



*An acute hospital admission refers to a hospital admission that occurred within 7 days of accident.

Fatalities: 12 months to December 2013

Category	2013	2012	2011	2013 v 2012		2013 v 2011		5 Year Av
Overview								
Fatalities	242	282	287	-40	(-14%)	-45	(-16%)	278
Accidents	224	261	259	-37	(-14%)	-35	(-14%)	254
Sex								
Female	82	84	76	-2	(-2%)	+6	(+8%)	81
Male	160	198	211	-38	(-19%)	-51	(-24%)	197
Roaduser								
Bicyclist	6	7	8	-1	(-14%)	-2	(-25%)	7
Driver	121	146	121	-25	(-17%)	0	(0%)	132
Motorcyclist	40	41	49	-1	(-2%)	-9	(-18%)	43
Passenger	39	53	60	-14	(-26%)	-21	(-35%)	54
Pedestrian	36	35	49	+1	(+3%)	-13	(-27%)	42
Location								
Melbourne	101	127	129	-26	(-20%)	-28	(-22%)	126
Rural Victoria	141	155	158	-14	(-9%)	-17	(-11%)	152
Agegroup								
0-4	0	3	7	-3	(-100%)	-7	(-100%)	4
5-15	5	7	8	-2	(-29%)	-3	(-38%)	8
16-17	3	3	12	0	(0%)	-9	(-75%)	6
18-20	16	30	32	-14	(-47%)	-16	(-50%)	29
21-25	22	34	34	-12	(-35%)	-12	(-35%)	31
26-29	17	18	15	-1	(-6%)	+2	(+13%)	20
30-39	29	42	37	-13	(-31%)	-8	(-22%)	37
40-49	31	29	38	+2	(+7%)	-7	(-18%)	35
50-59	29	37	30	-8	(-22%)	-1	(-3%)	33
60-69	30	31	30	-1	(-3%)	0	(0%)	27
70+	59	47	44	+12	(+26%)	+15	(+34%)	48
Altime								
High (Melb)	61	61	68	0	(0%)	-7	(-10%)	67
High (Rural)	48	72	81	-24	(-33%)	-33	(-41%)	70
High (Vic)	109	133	149	-24	(-18%)	-40	(-27%)	138
Low (Melb)	40	66	61	-26	(-39%)	-21	(-34%)	58
Low (Rural)	93	83	77	+10	(+12%)	+16	(+21%)	82
Low (Vic)	133	149	138	-16	(-11%)	-5	(-4%)	140
Accident Type								
Intersection								
Adjacent direction	33	27	32	0	(+22%)	+1	(+3%)	27
Opposing direction	4	4	7	0	(0%)	-3	(-43%)	5
Mid-block/other								
Head on	43	43	38	0	(0%)	+5	(+13%)	39
Same direction	17	14	13	+3	(+21%)	+4	(+31%)	16
Manoeuvre/o'taking	9	19	14	-10	(-53%)	-5	(-36%)	15
On path	1	6	5	-5	(-83%)	-4	(-80%)	5
Single vehicle	94	126	118	-32	(-25%)	-24	(-20%)	118
Other (incl peds)	41	43	60	-2	(-5%)	-19	(-32%)	50

Fatalities: 12 months to December 2013 – Continued

Category	2013	2012	2011	2013 v 2012		2013 v 2011		5 Year Av
Police Service Area (based on Local Government Area (see p.13))								
BALLARAT	7	2	7	+5	(+250%)	0	(0%)	6
BANYULE	3	3	2	0	(0%)	+1	(+50%)	3
BASS COAST	7	6	8	+1	(+17%)	-1	(-13%)	7
BAW BAW	6	5	6	+1	(+20%)	0	(0%)	7
BENALLA	11	7	8	+4	(+57%)	+3	(+38%)	9
BENDIGO	5	11	6	-6	(-55%)	-1	(-17%)	7
BOROONDARA	6	1	3	+5	(+500%)	+3	(+100%)	4
BRIMBANK	5	8	11	-3	(-38%)	-6	(-55%)	6
CAMPASPE	4	9	2	-5	(-56%)	+2	(+100%)	4
CARDINIA	1	7	9	-6	(-86%)	-8	(-89%)	6
CASEY	8	5	4	+3	(+60%)	+4	(+100%)	8
CENTRAL GOLDFIELDS	4	2	2	+2	(+100%)	+2	(+100%)	4
DAREBIN	2	5	2	-3	(-60%)	0	(0%)	3
EAST GIPPSLAND	3	7	8	-4	(-57%)	-5	(-63%)	8
FRANKSTON	0	3	4	-3	(-100%)	-4	(-100%)	3
GEELONG	5	16	14	-11	(-69%)	-9	(-64%)	11
GLEN EIRA	7	5	5	+2	(+40%)	+2	(+40%)	5
GREATER DANDENONG	3	6	4	-3	(-50%)	-1	(-25%)	5
HOBSONS BAY	3	0	1	+3		+2	(+200%)	1
HORSHAM	4	3	7	+1	(+33%)	-3	(-43%)	4
HUME	6	10	5	-4	(-40%)	+1	(+20%)	7
KINGSTON	6	9	3	-3	(-33%)	+3	(+100%)	5
KNOX	4	0	2	+4		+2	(+100%)	3
LA TROBE	7	8	3	-1	(-13%)	+4	(+133%)	6
MACEDON RANGES	4	8	2	-4	(-50%)	+2	(+100%)	6
MANNINGHAM	0	4	1	-4	(-100%)	-1	(-100%)	3
MARIBYRNONG	4	4	0	0	(0%)	+4		2
MAROONDAH	0	4	5	-4	(-100%)	-5	(-100%)	2
MELBOURNE	2	3	7	-1	(-33%)	-5	(-71%)	4
MELTON	7	5	7	+2	(+40%)	0	(0%)	6
MILDURA	6	1	3	+5	(+500%)	+3	(+100%)	4
MITCHELL	8	9	6	-1	(-11%)	+2	(+33%)	8
MONASH	4	6	5	-2	(-33%)	-1	(-20%)	5
MOONEE VALLEY	3	1	1	+2	(+200%)	+2	(+200%)	2
MOORABOOL	9	10	10	-1	(-10%)	-1	(-10%)	8
MORELAND	2	3	3	-1	(-33%)	-1	(-33%)	3
MORNINGTON PENINSULA	3	6	9	-3	(-50%)	-6	(-67%)	7
NILLUMBIK	0	2	3	-2	(-100%)	-3	(-100%)	2
NORTHERN GRAMPIANS	6	7	2	-1	(-14%)	+4	(+200%)	5
PORT PHILLIP	3	1	1	+2	(+200%)	+2	(+200%)	2
SHEPPARTON	4	11	5	-7	(-64%)	-1	(-20%)	6
SOUTHERN GRAMPIANS	0	5	7	-5	(-100%)	-7	(-100%)	5
STONNINGTON	1	2	2	-1	(-50%)	-1	(-50%)	1
SURF COAST	2	4	14	-2	(-50%)	-12	(-86%)	7
SWAN HILL	8	7	5	+1	(+14%)	+3	(+60%)	6
WANGARATTA	9	8	17	+1	(+13%)	-8	(-47%)	12
WARRNAMBOOL	12	2	7	+10	(+500%)	+5	(+71%)	7
WELLINGTON	6	2	8	+4	(+200%)	-2	(-25%)	5
WHITEHORSE	2	3	5	-1	(-33%)	-3	(-60%)	4
WHITTLESEA	3	6	5	-3	(-50%)	-2	(-40%)	7
WODONGA	4	4	1	0	(0%)	+3	(+300%)	4
WYNDHAM	4	9	9	-5	(-56%)	-5	(-56%)	6
YARRA	1	2	1	-1	(-50%)	0	(0%)	2
YARRA RANGES	8	5	10	+3	(+60%)	-2	(-20%)	9

Claims involving acute hospitalisation over 14 days: 12 months to June 2013 (claim acceptance date)

Category	2013	2012	2011	2013 v 2012		2013 v 2011		5 Year Av
Overview								
Claims	883	938	854	-55	(-6%)	+29	(+3%)	889
Sex								
Female	375	397	325	-22	(-6%)	+50	(+15%)	356
Male	507	541	528	-34	(-6%)	-21	(-4%)	533
Roaduser								
Driver	374	353	322	+21	(+6%)	+52	(+16%)	344
Passenger	139	155	139	-16	(-10%)	0	(0%)	148
Motorcyclist	132	170	167	-38	(-22%)	-35	(-21%)	163
Pedestrian	186	192	175	-6	(-3%)	+11	(+6%)	178
Cyclist	31	41	39	-10	(-24%)	-8	(-21%)	37
Train/Tram	5	9	7	-4	(-44%)	-2	(-29%)	6
Location								
Melbourne	565	617	550	-52	(-8%)	+15	(+3%)	559
Rural Victoria	312	315	289	-3	(-1%)	+23	(+8%)	303
Agegroup								
0-4	1	1	7	0	(0%)	-6	(-86%)	4
5-15	8	18	11	-10	(-56%)	-3	(-27%)	15
16-17	14	27	18	-13	(-48%)	-4	(-22%)	21
18-20	66	51	56	+15	(+29%)	+10	(+18%)	63
21-25	80	86	84	-6	(-7%)	-4	(-5%)	84
26-29	38	65	52	-27	(-42%)	-14	(-27%)	54
30-39	114	117	110	-3	(-3%)	+4	(+4%)	118
40-49	108	122	117	-14	(-11%)	-9	(-8%)	115
50-59	99	104	99	-5	(-5%)	0	(0%)	99
60-69	110	117	93	-7	(-6%)	+17	(+18%)	100
70+	245	230	207	+15	(+7%)	+38	(+18%)	217
Alctime								
High (Melb)	251	279	245	-28	(-10%)	+6	(+2%)	250
High (Rural)	113	129	124	-16	(-12%)	-11	(-9%)	125
High (Vic)	364	408	369	-44	(-11%)	-5	(-1%)	375
Low (Melb)	314	338	305	-24	(-7%)	+9	(+3%)	310
Low (Rural)	199	186	165	+13	(+7%)	+34	(+21%)	178
Low (Vic)	513	524	470	-11	(-2%)	+43	(+9%)	488
Accident Type								
Intersection								
Adjacent direction	129	123	115	+6	(+5%)	+14	(+12%)	123
Opposing direction	54	66	66	-12	(-18%)	-12	(-18%)	59
Mid-block/other								
Head on	83	75	89	+8	(+11%)	-6	(-7%)	78
Same direction	74	94	93	-20	(-21%)	-19	(-20%)	83
Manoeuvre/o'taking	65	55	49	+10	(+18%)	+16	(+33%)	54
On path	19	23	16	-4	(-17%)	+3	(+19%)	23
Single vehicle	230	264	228	-34	(-13%)	+2	(+1%)	254
Other (incl peds)	229	238	198	-9	(-4%)	+31	(+16%)	214

Note: excludes rejected claims and claims for interstate crashes

Claims involving acute hospitalisation over 14 days: 12 months to June 2013 (claim acceptance date) –
Continued

Category	2013	2012	2011	2013 v 2012		2013 v 2011		5 Year Av
Police Service Area (based on Local Government Area (see p.13))								
BALLARAT	13	11	18	+2	(+18%)	-5	(-28%)	13
BANYULE	11	11	10	0	(0%)	+1	(+10%)	11
BASS COAST	13	19	11	-6	(-32%)	+2	(+18%)	16
BAW BAW	6	16	10	-10	(-63%)	-4	(-40%)	9
BENALLA	13	15	17	-2	(-13%)	-4	(-24%)	16
BENDIGO	15	17	21	-2	(-12%)	-6	(-29%)	17
BOROONDARA	17	29	24	-12	(-41%)	-7	(-29%)	23
BRIMBANK	22	33	17	-11	(-33%)	+5	(+29%)	21
CAMPASPE	7	5	5	+2	(+40%)	+2	(+40%)	5
CARDINIA	12	18	16	-6	(-33%)	-4	(-25%)	17
CASEY	28	25	23	+3	(+12%)	+5	(+22%)	26
CENTRAL GOLDFIELDS	2	2	2	0	(0%)	0	(0%)	2
DAREBIN	23	13	16	+10	(+77%)	+7	(+44%)	18
EAST GIPPSLAND	9	16	14	-7	(-44%)	-5	(-36%)	13
FRANKSTON	12	15	18	-3	(-20%)	-6	(-33%)	17
GEELONG	39	27	23	+12	(+44%)	+16	(+70%)	29
GLEN EIRA	25	26	37	-1	(-4%)	-12	(-32%)	29
GREATER DANDENONG	26	34	21	-8	(-24%)	+5	(+24%)	27
HOBSONS BAY	10	11	10	-1	(-9%)	0	(0%)	9
HORSHAM	7	12	5	-5	(-42%)	+2	(+40%)	8
HUME	27	31	21	-4	(-13%)	+6	(+29%)	25
KINGSTON	20	19	17	+1	(+5%)	+3	(+18%)	19
KNOX	15	19	16	-4	(-21%)	-1	(-6%)	16
LA TROBE	12	15	20	-3	(-20%)	-8	(-40%)	13
MACEDON RANGES	19	13	17	+6	(+46%)	+2	(+12%)	17
MANNINGHAM	16	18	11	-2	(-11%)	+5	(+45%)	13
MARIBYRNONG	14	13	17	+1	(+8%)	-3	(-18%)	14
MAROONDAH	6	13	12	-7	(-54%)	-6	(-50%)	11
MELBOURNE	32	27	34	+5	(+19%)	-2	(-6%)	28
MELTON	17	13	11	+4	(+31%)	+6	(+55%)	12
MILDURA	7	12	5	-5	(-42%)	+2	(+40%)	7
MITCHELL	19	18	14	+1	(+6%)	+5	(+36%)	17
MONASH	17	25	20	-8	(-32%)	-3	(-15%)	22
MOONEE VALLEY	19	17	14	+2	(+12%)	+5	(+36%)	15
MOORABOOL	16	12	11	+4	(+33%)	+5	(+45%)	15
MORELAND	36	21	22	+15	(+71%)	+14	(+64%)	23
MORNINGTON PENINSULA	33	32	31	+1	(+3%)	+2	(+6%)	29
NILLUMBIK	10	5	5	+5	(+100%)	+5	(+100%)	6
NORTHERN GRAMPPIANS	11	6	4	+5	(+83%)	+7	(+175%)	6
PORT PHILLIP	8	15	8	-7	(-47%)	0	(0%)	12
SHEPPARTON	17	9	8	+8	(+89%)	+9	(+113%)	14
SOUTHERN GRAMPPIANS	8	7	10	+1	(+14%)	-2	(-20%)	8
STONNINGTON	10	19	23	-9	(-47%)	-13	(-57%)	15
SURF COAST	11	13	13	-2	(-15%)	-2	(-15%)	13
SWAN HILL	8	2	5	+6	(+300%)	+3	(+60%)	5
WANGARATTA	17	15	18	+2	(+13%)	-1	(-6%)	17
WARRNAMBOOL	14	20	10	-6	(-30%)	+4	(+40%)	14
WELLINGTON	10	8	12	+2	(+25%)	-2	(-17%)	10
WHITEHORSE	11	19	27	-8	(-42%)	-16	(-59%)	20
WHITTLESEA	22	29	12	-7	(-24%)	+10	(+83%)	21
WODONGA	9	15	5	-6	(-40%)	+4	(+80%)	10
WYNDHAM	21	26	12	-5	(-19%)	+9	(+75%)	18
YARRA	14	12	10	+2	(+17%)	+4	(+40%)	12
YARRA RANGES	31	29	35	+2	(+7%)	-4	(-11%)	30

Note: excludes rejected claims and claims for interstate crashes

Claims involving an acute hospital admission: 12 months to June 2013 (claim acceptance date)

Category	2013	2012	2011	2013 v 2012	2013 v 2011	5 Year Av
Overview						
Claims	5,183	5,982	5,692	-799	(-13%)	5,555
Sex						
Female	2,176	2,552	2,423	-376	(-15%)	2,336
Male	3,005	3,430	3,267	-425	(-12%)	3,217
Roaduser						
Driver	2,413	2,803	2,596	-390	(-14%)	2,515
Passenger	880	1,040	1,095	-160	(-15%)	1,019
Motorcyclist	797	963	950	-166	(-17%)	929
Pedestrian	627	660	650	-33	(-5%)	627
Cyclist	350	374	329	-24	(-6%)	336
Train/Tram	27	26	24	+1	(+4%)	24
Location						
Melbourne	3,455	4,035	3,825	-580	(-14%)	3,647
Rural Victoria	1,663	1,870	1,821	-207	(-11%)	1,738
Agegroup						
0-4	43	47	55	-4	(-9%)	49
5-15	176	197	188	-21	(-11%)	196
16-17	96	126	135	-30	(-24%)	131
18-20	466	557	565	-91	(-16%)	548
21-25	630	775	695	-145	(-19%)	692
26-29	387	447	431	-60	(-13%)	424
30-39	776	930	897	-154	(-17%)	891
40-49	775	892	857	-117	(-13%)	823
50-59	632	750	703	-118	(-16%)	668
60-69	470	538	499	-68	(-13%)	466
70+	732	723	667	+9	(+1%)	666
Alctime						
High (Melb)	1,512	1,852	1,776	-340	(-18%)	1,660
High (Rural)	682	791	819	-109	(-14%)	757
High (Vic)	2,194	2,643	2,595	-449	(-17%)	2,417
Low (Melb)	1,943	2,183	2,049	-240	(-11%)	1,987
Low (Rural)	981	1,079	1,002	-98	(-9%)	981
Low (Vic)	2,924	3,262	3,051	-338	(-10%)	2,968
Accident Type						
Intersection						
Adjacent direction	755	927	851	-172	(-19%)	843
Opposing direction	461	498	457	-37	(-7%)	457
Mid-block/other						
Head on	294	318	363	-24	(-8%)	321
Same direction	751	963	958	-212	(-22%)	844
Manoeuvre/o'taking	308	299	340	+9	(+3%)	317
On path	197	237	199	-40	(-17%)	214
Single vehicle	1,392	1,639	1,613	-247	(-15%)	1,578
Other (incl peds)	1,025	1,101	911	-76	(-7%)	976

Note: excludes rejected claims and claims for interstate crashes

Claims involving an acute hospital admission: 12 months to June 2013 (claim acceptance date) – Continued

Category	2013	2012	2011	2013 v 2012		2013 v 2011		5 Year Av
Police Service Area (based on Local Government Area (see p.13))								
BALLARAT	92	100	106	-8	(-8%)	-14	(-13%)	93
BANYULE	55	70	55	-15	(-21%)	0	(0%)	60
BASS COAST	64	98	73	-34	(-35%)	-9	(-12%)	74
BAW BAW	58	65	53	-7	(-11%)	+5	(+9%)	53
BENALLA	92	96	102	-4	(-4%)	-10	(-10%)	99
BENDIGO	101	119	94	-18	(-15%)	+7	(+7%)	94
BOROONDARA	123	143	136	-20	(-14%)	-13	(-10%)	133
BRIMBANK	143	191	126	-48	(-25%)	+17	(+13%)	142
CAMPASPE	34	43	39	-9	(-21%)	-5	(-13%)	37
CARDINIA	77	88	107	-11	(-13%)	-30	(-28%)	89
CASEY	201	249	232	-48	(-19%)	-31	(-13%)	221
CENTRAL GOLDFIELDS	10	8	6	+2	(+25%)	+4	(+67%)	9
DAREBIN	94	90	114	+4	(+4%)	-20	(-18%)	100
EAST GIPPSLAND	72	73	64	-1	(-1%)	+8	(+13%)	61
FRANKSTON	106	146	144	-40	(-27%)	-38	(-26%)	135
GEELONG	200	237	234	-37	(-16%)	-34	(-15%)	223
GLEN EIRA	155	176	181	-21	(-12%)	-26	(-14%)	164
GREATER DANDENONG	199	205	205	-6	(-3%)	-6	(-3%)	185
HOBSONS BAY	50	71	63	-21	(-30%)	-13	(-21%)	59
HORSHAM	31	37	40	-6	(-16%)	-9	(-23%)	31
HUME	128	149	157	-21	(-14%)	-29	(-18%)	144
KINGSTON	126	131	124	-5	(-4%)	+2	(+2%)	129
KNOX	81	118	131	-37	(-31%)	-50	(-38%)	112
LA TROBE	62	65	76	-3	(-5%)	-14	(-18%)	61
MACEDON RANGES	86	71	86	+15	(+21%)	0	(0%)	80
MANNINGHAM	71	72	60	-1	(-1%)	+11	(+18%)	67
MARIBYRNONG	65	98	80	-33	(-34%)	-15	(-19%)	76
MAROONDAH	49	77	73	-28	(-36%)	-24	(-33%)	68
MELBOURNE	242	235	238	+7	(+3%)	+4	(+2%)	218
MELTON	69	79	75	-10	(-13%)	-6	(-8%)	68
MILDURA	26	47	34	-21	(-45%)	-8	(-24%)	33
MITCHELL	87	90	72	-3	(-3%)	+15	(+21%)	80
MONASH	164	183	155	-19	(-10%)	+9	(+6%)	163
MOONEE VALLEY	106	115	87	-9	(-8%)	+19	(+22%)	100
MOORABOOL	103	97	85	+6	(+6%)	+18	(+21%)	100
MORELAND	136	154	145	-18	(-12%)	-9	(-6%)	135
MORNINGTON PENINSULA	118	183	181	-65	(-36%)	-63	(-35%)	156
NILLUMBIK	41	42	38	-1	(-2%)	+3	(+8%)	37
NORTHERN GRAMPIANS	45	35	29	+10	(+29%)	+16	(+55%)	34
PORT PHILLIP	101	122	107	-21	(-17%)	-6	(-6%)	108
SHEPPARTON	66	66	61	0	(0%)	+5	(+8%)	68
SOUTHERN GRAMPIANS	47	45	54	+2	(+4%)	-7	(-13%)	43
STONNINGTON	126	119	134	+7	(+6%)	-8	(-6%)	119
SURF COAST	48	64	85	-16	(-25%)	-37	(-44%)	73
SWAN HILL	26	27	20	-1	(-4%)	+6	(+30%)	29
WANGARATTA	93	97	103	-4	(-4%)	-10	(-10%)	100
WARRNAMBOOL	63	98	101	-35	(-36%)	-38	(-38%)	85
WELLINGTON	53	71	90	-18	(-25%)	-37	(-41%)	69
WHITEHORSE	98	115	140	-17	(-15%)	-42	(-30%)	116
WHITTLESEA	139	151	111	-12	(-8%)	+28	(+25%)	129
WODONGA	64	78	56	-14	(-18%)	+8	(+14%)	62
WYNDHAM	133	157	135	-24	(-15%)	-2	(-1%)	126
YARRA	93	113	105	-20	(-18%)	-12	(-11%)	102
YARRA RANGES	166	193	186	-27	(-14%)	-20	(-11%)	187

Note: excludes rejected claims and claims for interstate crashes

Fatalities: Victorian monthly totals since 1951

Year	Jan	Feb	Mar	Apr	May	Jun	Jul	Aug	Sep	Oct	Nov	Dec	Totals
1951							61	59	52	38	29	41	
1952	45	40	54	61	54	69	67	55	44	44	31	20	584
1953	23	28	54	58	49	42	50	37	44	27	36	32	480
1954	44	42	28	60	55	36	63	33	25	52	30	41	509
1955	44	36	45	55	48	56	64	44	44	32	40	40	548
1956	34	48	51	67	53	65	71	47	39	39	44	48	606
1957	50	41	46	58	52	54	57	53	51	46	32	49	589
1958	50	38	42	58	54	41	54	53	57	40	57	52	596
1959	50	57	61	50	75	55	42	48	52	55	63	63	671
1960	49	53	57	76	70	70	67	62	61	77	52	66	760
1961	63	57	68	74	58	68	78	82	59	62	60	65	794
1962	65	41	76	78	72	80	70	77	62	53	64	70	808
1963	67	56	65	85	66	68	77	55	55	58	61	67	780
1964	73	71	78	71	83	89	80	89	67	66	62	75	904
1965	63	64	86	88	80	87	79	69	81	77	68	87	929
1966	75	59	75	103	74	86	87	80	75	66	90	85	955
1967	61	79	91	97	81	71	59	67	70	68	60	83	887
1968	70	78	86	78	73	76	73	77	72	80	81	105	949
1969	79	68	79	87	86	77	87	83	87	83	94	101	1,011
1970	85	84	106	80	87	88	110	106	78	95	68	74	1,061
1971	83	75	77	68	76	86	85	72	78	73	74	76	923
1972	61	62	75	82	75	71	98	85	83	62	80	81	915
1973	75	75	95	85	64	66	61	85	89	88	66	86	935
1974	56	62	81	60	70	73	67	62	53	70	80	72	806
1975	67	65	87	73	97	94	57	75	69	66	71	89	910
1976	79	78	88	78	69	79	60	70	82	78	77	100	938
1977	65	71	89	79	65	79	70	91	68	74	96	107	954
1978	75	54	95	63	64	69	68	77	65	84	83	72	869
1979	63	60	86	75	45	64	66	75	69	79	72	93	847
1980	48	55	66	59	47	56	60	53	45	58	61	49	657
1981	69	60	58	61	74	65	61	63	68	71	59	57	766
1982	55	53	59	59	67	45	47	71	53	69	65	66	709
1983	42	59	53	63	62	61	65	51	59	43	54	52	664
1984	65	48	58	50	56	48	46	50	71	53	55	58	658
1985	56	47	50	65	75	50	51	50	58	61	56	64	683
1986	56	50	70	69	59	53	42	54	54	52	59	51	669
1987	62	43	57	52	63	59	62	49	62	61	55	80	705
1988	49	58	69	54	79	50	54	52	64	59	43	70	701
1989	76	65	80	59	67	73	52	65	82	50	41	66	776
1990	48	44	55	39	56	64	41	34	48	35	40	44	548
1991	45	39	70	30	34	29	44	47	41	36	35	53	503
1992	34	33	34	47	33	29	23	27	28	38	30	40	396
1993	27	40	37	39	44	33	33	27	34	39	43	40	436
1994	36	31	44	35	27	33	29	37	17	27	32	30	378
1995	38	35	26	33	34	41	27	34	34	32	38	46	418
1996	40	47	35	38	28	29	30	35	49	24	33	30	418
1997	36	25	30	30	40	22	39	26	26	29	39	35	377
1998	29	29	32	36	31	22	40	19	37	36	49	30	390
1999	32	31	35	35	34	24	35	26	28	38	29	37	384
2000	32	26	46	32	39	32	33	29	36	29	44	29	407
2001	44	30	31	32	31	41	34	37	35	51	41	37	444
2002	32	31	45	31	45	32	27	25	31	30	31	37	397
2003	21	41	36	28	31	28	20	23	23	24	24	31	330
2004	32	22	30	30	46	28	27	26	22	28	25	27	343
2005	33	27	47	21	29	23	30	25	25	33	17	36	346
2006	24	37	23	23	27	23	25	22	43	20	31	39	337
2007	23	23	32	25	26	28	28	20	23	37	26	41	332
2008	28	20	37	25	25	20	27	27	18	25	26	25	303
2009	31	18	23	32	19	30	19	21	14	28	21	34	290
2010	26	25	23	20	31	26	26	18	17	36	12	28	288
2011	18	20	34	31	30	24	25	14	12	22	30	27	287
2012	30	20	25	19	23	22	17	25	17	34	26	24	282
2013	14	24	24	19	18	13	24	20	19	14	23	30	242
Ave	49	47	56	54	54	52	52	50	50	50	49	56	619
Max	85	84	106	103	97	94	110	106	89	95	96	107	1,061
Min	14	18	23	19	18	13	17	14	12	14	12	20	242

Fatalities by Week (2007 to 2013)

Week Ending	2007	2008	2009	2010	2011	2012	2013	Cumulative 2013	% Change 2013-2012	12 Month Moving Total
6-Jan	3	1	3	1	2	1	2	2	0%	283
13-Jan	2	8	11	6	1	3	3	5	+67%	283
20-Jan	7	5	6	1	6	9	5	10	+11%	279
27-Jan	5	4	2	9	4	7	4	14	+8%	276
3-Feb	5	8	8	6	4	9	6	20	+18%	273
10-Feb	7	5	1	9	8	4	7	27	+8%	276
17-Feb	4	4	10	5	3	2	4	31	+11%	278
24-Feb	10	4	3	8	5	10	6	37	+12%	274
3-Mar	3	8	5	4	4	4	2	39	+5%	272
10-Mar	9	8	2	6	8	1	5	44	-2%	276
17-Mar	9	5	6	5	6	4	5	49	-4%	277
24-Mar	3	13	3	4	9	12	10	59	-2%	275
31-Mar	8	7	7	8	8	4	3	62	-9%	274
7-Apr	4	10	8	5	5	7	4	66	-10%	271
14-Apr	11	3	5	4	12	6	5	71	-16%	270
21-Apr	4	6	8	6	5	2	5	76	-16%	273
28-Apr	3	6	10	4	6	6	5	81	-16%	272
5-May	7	5	6	4	7	2	5	86	-17%	275
12-May	3	7	7	3	4	10	4	90	-16%	269
19-May	6	4	4	9	7	2	0	90	-21%	267
26-May	8	8	1	6	11	5	2	92	-26%	264
2-Jun	6	6	3	12	4	5	11	103	-20%	270
9-Jun	15	2	7	2	5	4	3	106	-21%	269
16-Jun	3	6	6	7	9	6	0	106	-26%	263
23-Jun	4	4	8	8	3	4	6	112	-23%	265
30-Jun	7	7	6	5	6	7	0	112	-26%	258
7-Jul	2	5	7	8	5	4	6	118	-25%	260
14-Jul	9	10	9	4	10	2	7	125	-25%	265
21-Jul	7	2	2	3	5	4	3	128	-26%	264
28-Jul	6	3	5	5	8	5	5	133	-26%	264
4-Aug	5	8	3	10	2	5	8	141	-23%	267
11-Aug	2	8	3	7	4	2	1	142	-24%	266
18-Aug	2	6	11	3	6	4	5	147	-23%	267
25-Aug	4	3	4	5	1	5	4	151	-22%	266
1-Sep	11	7	1	2	1	10	5	156	-20%	261
8-Sep	3	5	4	3	3	5	5	161	-18%	261
15-Sep	7	3	1	4	3	4	3	164	-18%	260
22-Sep	4	6	7	1	3	6	3	167	-18%	257
29-Sep	8	6	2	6	1	4	8	175	-14%	261
6-Oct	5	6	2	4	5	2	3	178	-15%	262
13-Oct	12	8	2	12	7	8	2	180	-17%	256
20-Oct	6	4	8	7	2	10	3	183	-16%	249
27-Oct	8	4	9	8	3	8	2	185	-16%	243
3-Nov	6	4	8	6	7	5	6	191	-16%	244
10-Nov	6	4	4	5	5	5	8	199	-15%	247
17-Nov	7	7	6	0	12	7	2	201	-18%	242
24-Nov	4	10	6	3	8	7	7	208	-18%	242
1-Dec	7	3	4	3	5	5	4	212	-18%	241
8-Dec	8	4	5	7	7	8	7	219	-17%	240
15-Dec	16	9	5	6	6	7	9	228	-16%	242
22-Dec	5	3	11	6	7	4	10	238	-14%	248
29-Dec	8	9	10	9	6	4	4	242	-15%	248
31-Dec	8	2	5	4	3	6	0	242	-16%	242
Total	332	303	290	288	287	282	242			

Alcohol Related Fatalities

NOTE: UPDATES TO THIS DATA WERE NOT AVAILABLE AT TIME OF REPORT

- 24% of fatally injured and tested drivers and riders had a BAC at 0.05 g/100ml or over (41 of 172) compared to 25% over the previous 12 month period (43 of 169).
- In Melbourne, 21 drivers/riders fatally injured and tested were at or over 0.05, with 38% of these having a BAC in excess of 0.15 g/100ml. Across rural Victoria, 20 drivers/riders fatally injured and tested were at or over 0.05, with 65% of these having a BAC over 0.15.
- Of the 41 drivers and riders fatally injured and tested at or over 0.05, 15% (6) were aged under 21, 39% (16) were aged 21-29, 27% (11) were aged 30-39 and 20% (8) were aged 40 years and over. In the previous year (43 fatally injured) the corresponding figures were 19% (8), 28% (12), 19% (8) and 35% (15), respectively.

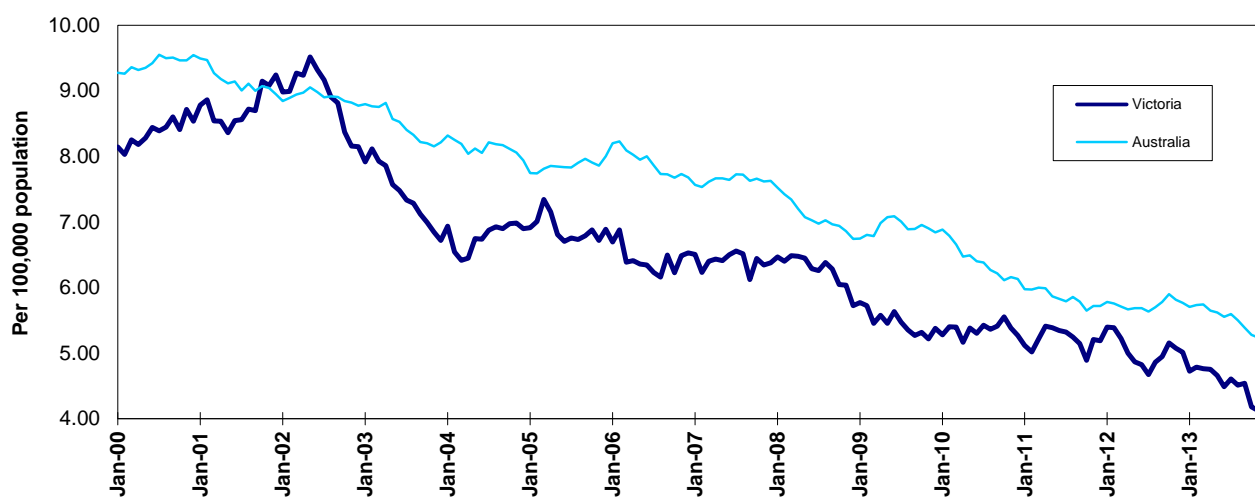
BAC Fatalities (12 months to April 2010)

Category	2010	2009	2008	2010 v 2009		2010 v 2008		5 Year Av
Melbourne Drivers and Riders								
<0.05	55	63	63	(-8)	(-13%)	(-8)	(-13%)	62
[a] at 0.05 & above	21	17	25	(+4)	(+24%)	(-4)	(-16%)	21
% at 0.05 & above	(28%)	(21%)	(28%)					(+25%)
[b] >0.15	8	10	12	(-2)	(-20%)	(-4)	(-33%)	9
%>0.15	(11%)	(13%)	(14%)					(+11%)
[b] as a % of [a]	(38%)	(59%)	(48%)					(+43%)
BAC Unknown	5	3	1	(+2)	(+67%)	(+4)	(+400%)	3
Country Drivers and Riders								
<0.05	76	63	90	(+13)	(+21%)	(-14)	(-16%)	78
[a] at 0.05 & above	20	26	32	(-6)	(-23%)	(-12)	(-38%)	26
% at 0.05 & above	(21%)	(29%)	(26%)					(+25%)
[b] >0.15	13	17	20	(-4)	(-24%)	(-7)	(-35%)	17
%>0.15	(14%)	(19%)	(16%)					(+16%)
[b] as a % of [a]	(65%)	(65%)	(63%)					(+64%)
BAC Unknown	7	2	1	(+5)	(+250%)	(+6)	(+600%)	5
Victorian Total Drivers and Riders								
<0.05	131	126	153	(+5)	(+4%)	(-22)	(-14%)	140
[a] at 0.05 & above	41	43	57	(-2)	(-5%)	(-16)	(-28%)	47
% at 0.05 & above	(24%)	(25%)	(27%)					(+25%)
[b] >0.15	21	27	32	(-6)	(-22%)	(-11)	(-34%)	26
%>0.15	(12%)	(16%)	(15%)					(+14%)
[b] as a % of [a]	(51%)	(63%)	(56%)					(+54%)
BAC Unknown	12	5	2	(+7)	(+140%)	(+10)	(+500%)	7
Victorian Total Pedestrians								
<0.05	32	35	38	(-3)	(-9%)	(-6)	(-16%)	33
[a] at 0.05 & above	8	21	9	(-13)	(-62%)	(-1)	(-11%)	14
% at 0.05 & above	(20%)	(38%)	(19%)					(+30%)
[b] >0.15	3	10	8	(-7)	(-70%)	(-5)	(-63%)	9
%>0.15	(8%)	(18%)	(17%)					(+19%)
[b] as a % of [a]	(38%)	(48%)	(89%)					(+62%)
BAC Unknown	6	4	2	(+2)	(+50%)	(+4)	(+200%)	4

The National Picture

State	Fatalities (12 months to December)					2013 v 2012	
	2013	2012	2011	2010			
NSW	343	369	364	405	-26	(-7%)	
VIC	242	282	287	288	-40	(-14%)	
QLD	271	280	269	249	-9	(-3%)	
SA	98	94	103	118	+4	(+4%)	
WA	162	184	179	193	-22	(-12%)	
TAS	37	32	24	31	+5	(+16%)	
NT	37	49	45	50	-12	(-24%)	
ACT	7	12	6	19	-5	(-42%)	
AUST TOTAL	1,197	1,302	1,277	1,353	-105	(-8%)	
AUST minus VIC	955	1,020	990	1,065	-65	(-6%)	

State	Fatalities per 10,000 registered vehicles (12 months to December)			Fatalities per 100,000 population (12 months to December)		
	2013	2012	2011	2013	2012	2011
NSW	0.68	0.75	0.76	4.63	5.06	5.05
VIC	0.55	0.65	0.68	4.22	5.01	5.19
QLD	0.74	0.79	0.78	5.82	6.14	6.01
SA	0.75	0.73	0.81	5.87	5.68	6.29
WA	0.78	0.92	0.92	6.44	7.57	7.61
TAS	0.84	0.74	0.57	7.21	6.25	4.69
NT	2.44	3.40	3.24	15.45	20.87	19.45
ACT	0.25	0.44	0.23	1.83	3.20	1.63
AUST TOTAL	0.69	0.77	0.77	5.17	5.77	5.72
AUST minus VIC	0.74	0.81	0.81	5.49	6.01	5.90



Victoria v Australia - 12 Month Moving Fatality Rate

Booze-Bus Random Breath Testing

12 months to September 2013 (monthly totals)*

2013												
	Jan	Feb	Mar	Apr	May	Jun	Jul	Aug	Sep	Oct	Nov	Dec
Melbourne	93,928	79,064	86,312	89,067	80,338	84,055	74,595	72,612	81,321	81,035	78,065	108,302
Country	7,290	7,258	8,046	9,786	8,335	4,227	9,038	4,343	1,891	9,159	4,834	11,603
Vic Total	101,218	86,322	94,358	98,853	88,673	88,282	83,633	76,955	83,212	90,194	82,899	119,905

12 months to September 2013 vs previous 12 months

	2013	2012	2011	2013 v 2012		2013 v 2011	
Melbourne	1,008,694	1,059,920	928,178	-51226	(-5%)	+80516	(+9%)
Country	85,810	110,484	155,069	-24674	(-22%)	-69259	(-45%)
Vic Total	1,094,504	1,170,404	1,083,247	-75900	(-6%)	+11257	(+1%)

*Due to police industrial action, reliable random breath testing data is not available from May to October 2011. For the rolling 12 month totals, 2010 data has been used as a substitute in the relevant months.

Mobile Safety Camera Data

Speed Infringements Issued from Mobile Cameras (monthly totals)

Monthly Average = 39,163

2013

Jan	Feb	Mar	Apr	May	Jun	Jul	Aug	Sep	Oct	Nov	Dec
52,184	39,407	36,296	40,184	42,428	37,432	43,863	35,702	35,440	38,868	36,079	32,072

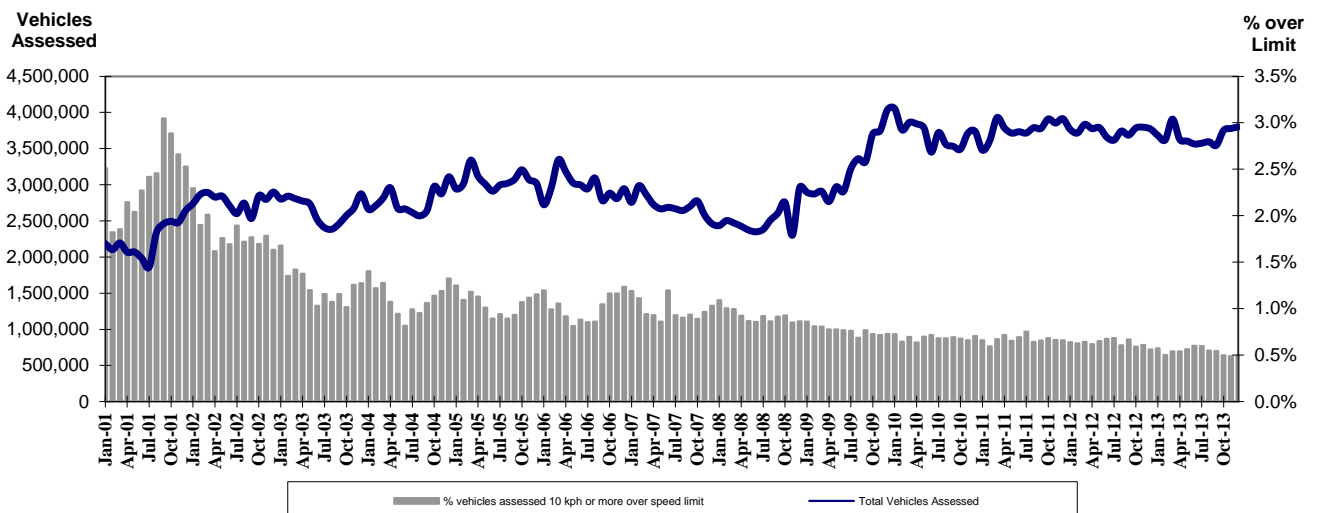
Excessive Speed Infringements (ESI) Issued from Mobile Cameras (monthly totals)

Monthly Average = 343

2013

Jan	Feb	Mar	Apr	May	Jun	Jul	Aug	Sep	Oct	Nov	Dec
363	341	292	342	398	361	387	339	338	366	306	286

Notes: An ESI is defined as 25km/h over the speed limit except in a 110km/h zone where it is 20km/h over the limit.



Mobile Safety Cameras – Vehicles assessed and percentage of vehicles assessed 10km/h or more over speed limit per month

Explanations and References

Hi-Alc time is those times of the day and week (*shaded* in the table below) when casualty crashes are ten times more likely to involve alcohol than casualty crashes at other (Lo-Alc time) times.

	12am - 6am	6am - 8am	8am - 10am	10am - 2pm	2pm - 4pm	4pm - 6pm	6pm - 12pm
Monday							
Tuesday							
Wednesday							
Thursday							
Friday							
Saturday							
Sunday							

Police Service Areas align with Local Government Areas. Most Police Service Areas are equivalent to a single Local Government Area, while the remainder comprise two or three Local Government Areas.

Police Service Area	Local Government Area(s)	Police Service Area	Local Government Area(s)
BALLARAT	BALLARAT, PYRENEES	MAROONDAH	MAROONDAH
BANYULE	BANYULE	MELBOURNE	MELBOURNE
BASS COAST	BASS COAST, SOUTH GIPPSLAND	MELTON	MELTON
BAW BAW	BAWBAW	MILDURA	MILDURA
BENALLA	BENALLA, MANSFIELD, MURRINDINDI	MITCHELL	MITCHELL, STRATHBOGIE
BENDIGO	GREATER BENDIGO	MONASH	MONASH
BOROONDARA	BOROONDARA	MOONEE VALLEY	MOONEE VALLEY
BRIMBANK	BRIMBANK	MOORABOOL	GOLDEN PLAINS, HEPBURN, MOORABOOL
CAMPASPE	CAMPASPE	MORELAND	MORELAND
CARDINIA	CARDINIA	MORNINGTON PENINSULA	MORNINGTON PENINSULA
CASEY	CASEY	NILLUMBIK	NILLUMBIK
CENTRAL GOLDFIELDS	CENTRAL GOLDFIELDS, LODDON	NORTHERN GRAMPIANS	ARARAT, NORTHERN GRAMPIANS, YARRIAMIACK
GREATER DANDENONG	GREATER DANDENONG	PORT PHILLIP	PORT PHILLIP
DAREBIN	DAREBIN	SHEPPARTON	GREATER SHEPPARTON
EAST GIPPSLAND	EAST GIPPSLAND	SOUTHERN GRAMPIANS	GLENELG, SOUTHERN GRAMPIANS
FRANKSTON	FRANKSTON	STONNINGTON	STONNINGTON
GEELONG	GREATER GEELONG, QUEENSCLIFF	SURFCOAST	SURFCOAST, COLAC OTWAY
GLENEIRA	GLENEIRA, BAYSIDE	SWANHILL	BULOKE, GANNAWARRA, SWAN HILL
HOBSONS BAY	HOBSONSBAY	WANGARATTA	ALPINE, MOIRA, WANGARATTA
HORSHAM	HINDMARSH, HORSHAM, WESTWIMMERA	WARRNAMBOOL	CORANGAMITE, MOYNE, WARRNAMBOOL
HUME	HUME	WELLINGTON	WELLINGTON
KINGSTON	KINGSTON	WHITEHORSE	WHITEHORSE
KNOX	KNOX	WHITTLESEA	WHITTLESEA
LATROBE	LATROBE	WODONGA	INDIGO, TOWONG, WODONGA
MACEDON RANGES	MOUNT ALEXANDER, MACEDON RANGES	WYNDHAM	WYNDHAM
MANNINGHAM	MANNINGHAM	YARRA	YARRA
MARIBYRNONG	MARIBYRNONG	YARRA RANGES	YARRA RANGES

Useful Internet Sites

TAC Sites

- TAC Safety (Road Safety) www.tacsafety.com.au
- TAC How safe is your car www.howsafeisyourcar.com.au
- TAC Learners Log www.learnerslog.com.au
- TAC Motorcycle Safety Website www.spokes.com.au
- TAC Corporate site www.tac.vic.gov.au

Victorian Sites:

- VicRoads www.vicroads.vic.gov.au
- Victoria Police www.police.vic.gov.au
- Parliamentary Road Safety Committee www.parliament.vic.gov.au/rsc/
- ARRB Transport Research www.arrb.com.au
- RACV www.racv.com.au
- Monash University Accident Research Centre www.monash.edu.au/muarc
- Roadsafe www.roadsafe.org.au
- Cameras Save Lives www.camerassavelives.vic.gov.au

National and Interstate Sites:

- Australian Transport Safety Bureau www.atsb.gov.au
- Roads and Traffic Authority (NSW) www.rta.nsw.gov.au
- Queensland Transport - Road Safety transport.qld.gov.au/Home/Safety/Road
- Department of Transport (SA) www.transport.sa.gov.au/index.htm
- Main Roads Western Australia - Road Safety www.mrwa.wa.gov.au

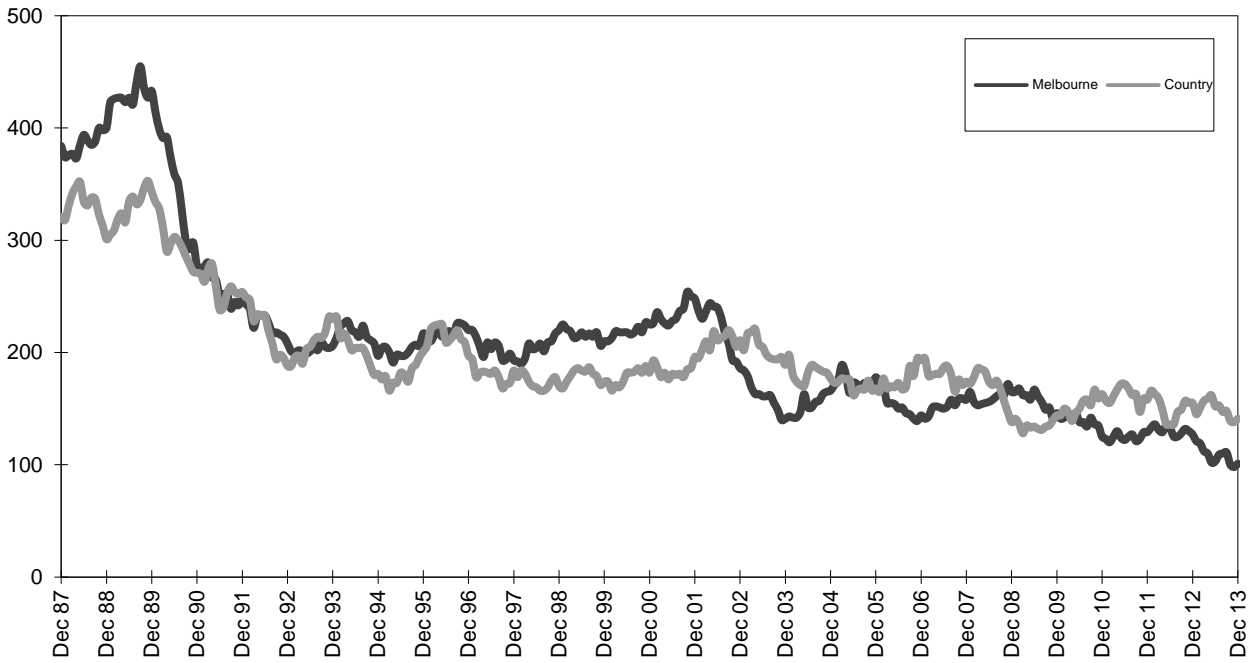
International Sites:

- National Highway Traffic Safety Admin (USA) www.nhtsa.dot.gov
- Swedish Road and Transport Institute (VTI) www.vti.se
- SWOV Institute for Road Safety Research www.swov.nl

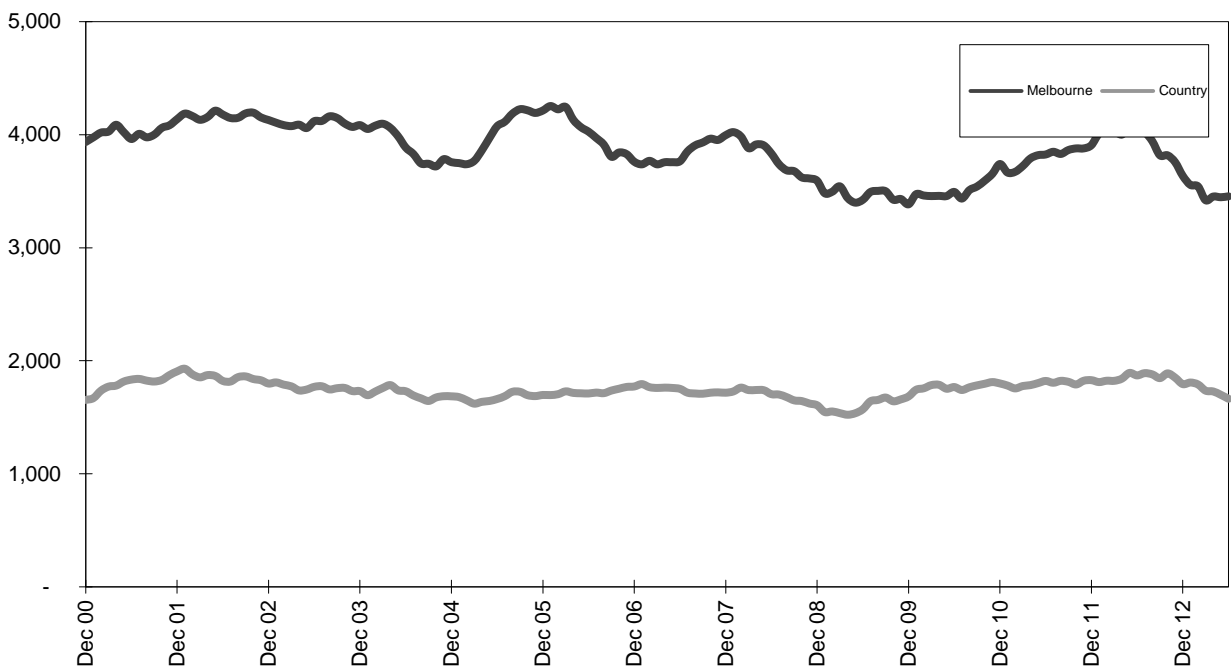
Related Sites:

- Australian Drug Foundation www.adf.org.au
- Amy Gillett Foundation www.amygillett.org.au

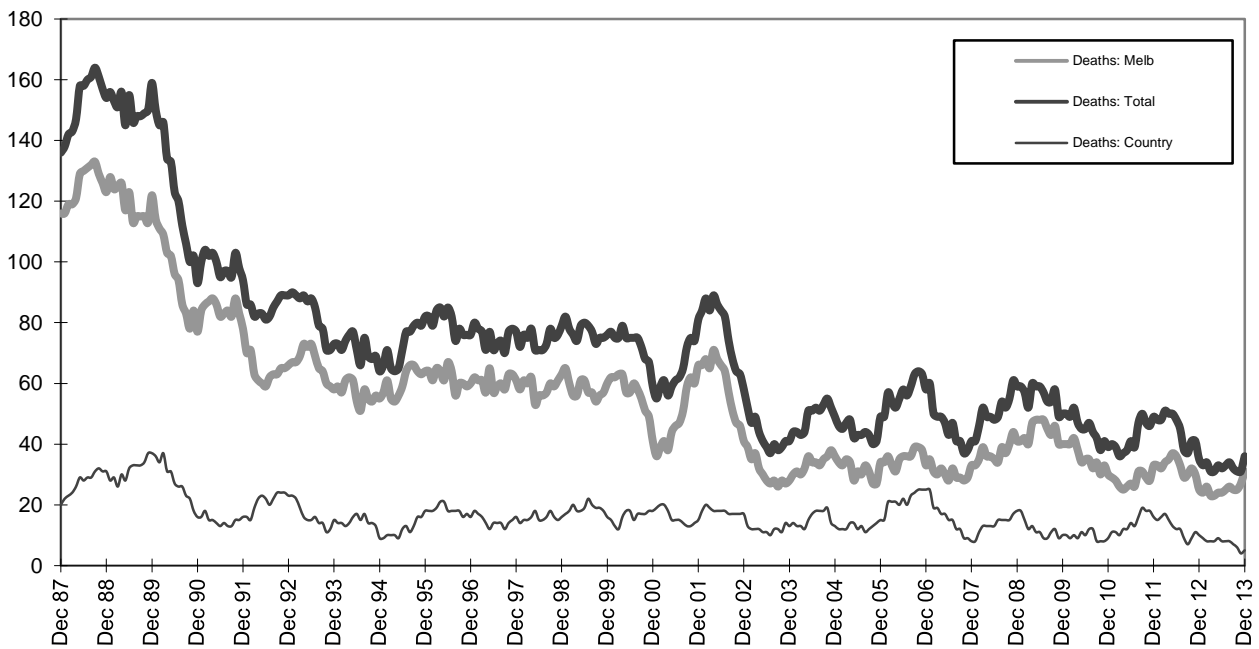
Figures



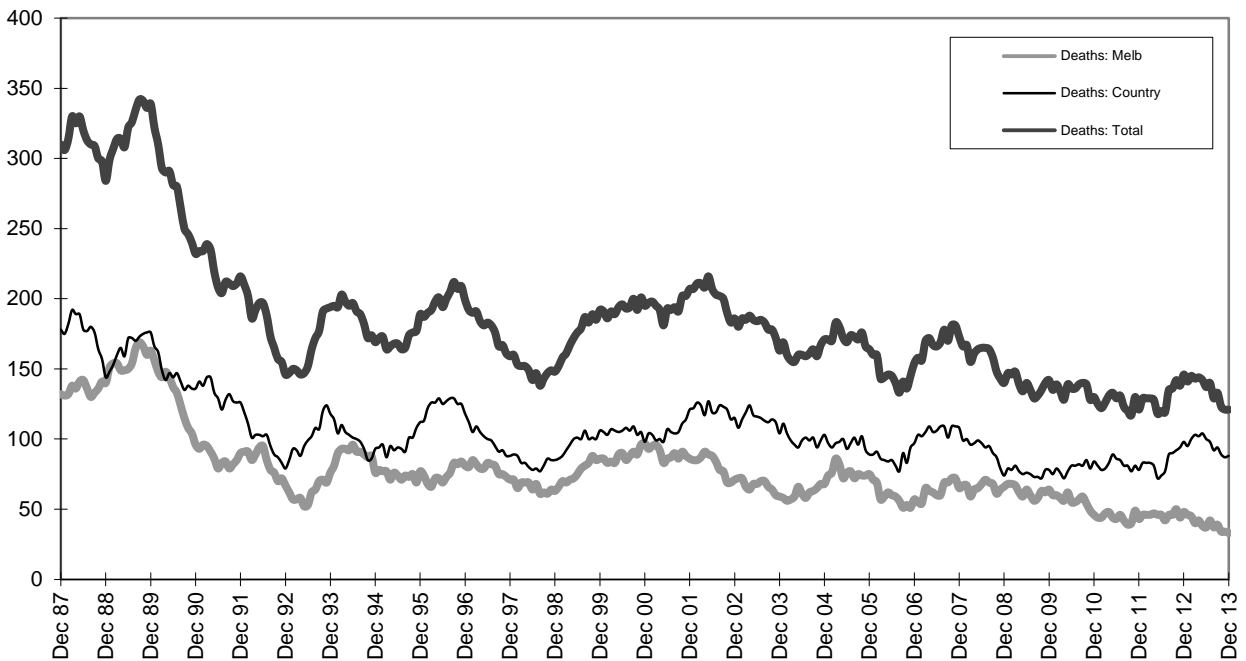
Graph 1a - Melbourne/country fatalities



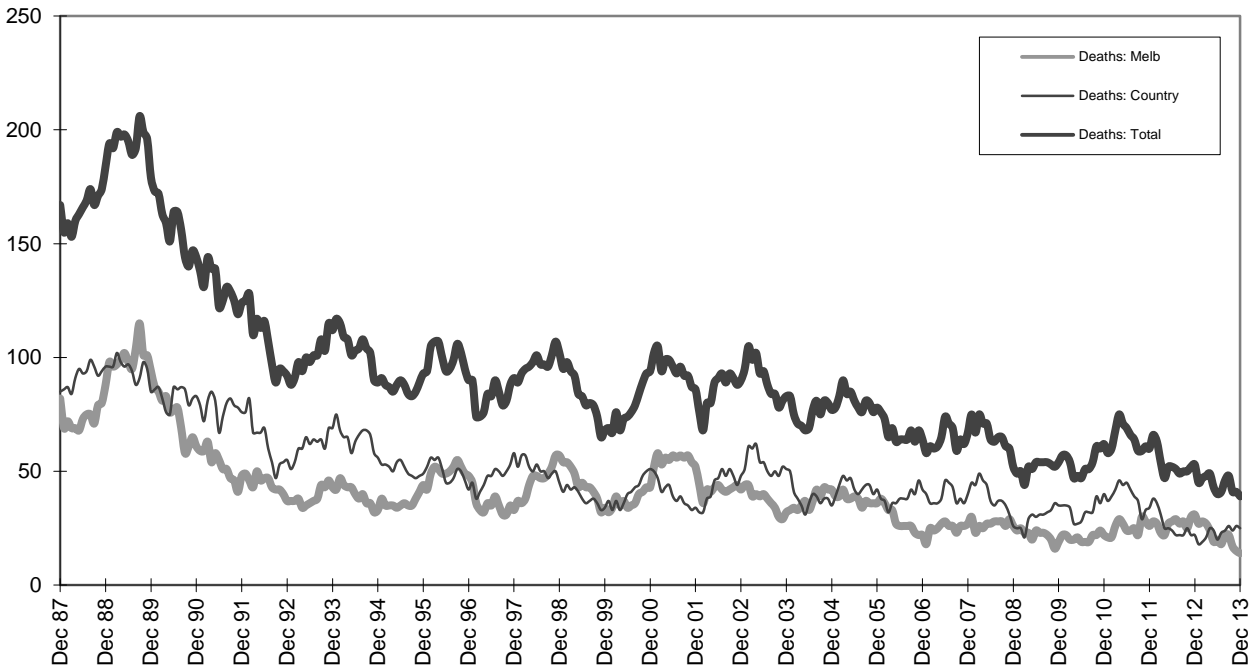
Graph 1b - Melbourne/country Claims involving an acute hospital admission



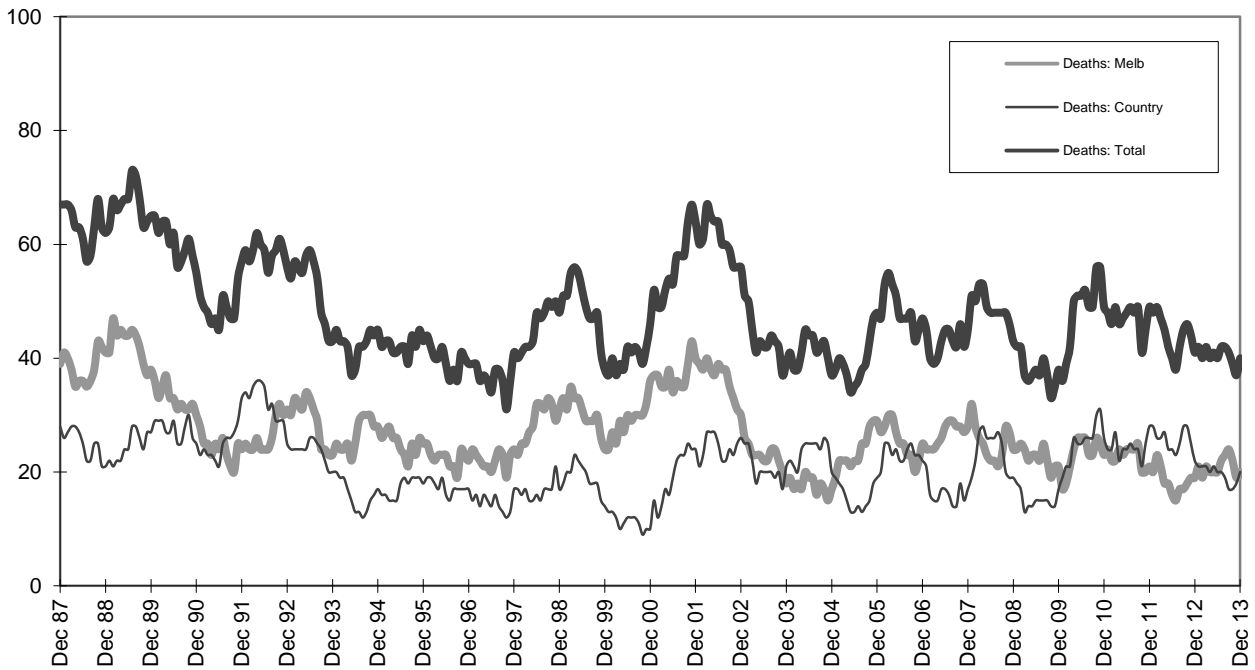
Graph 2a - Pedestrian fatalities (Melbourne/country)



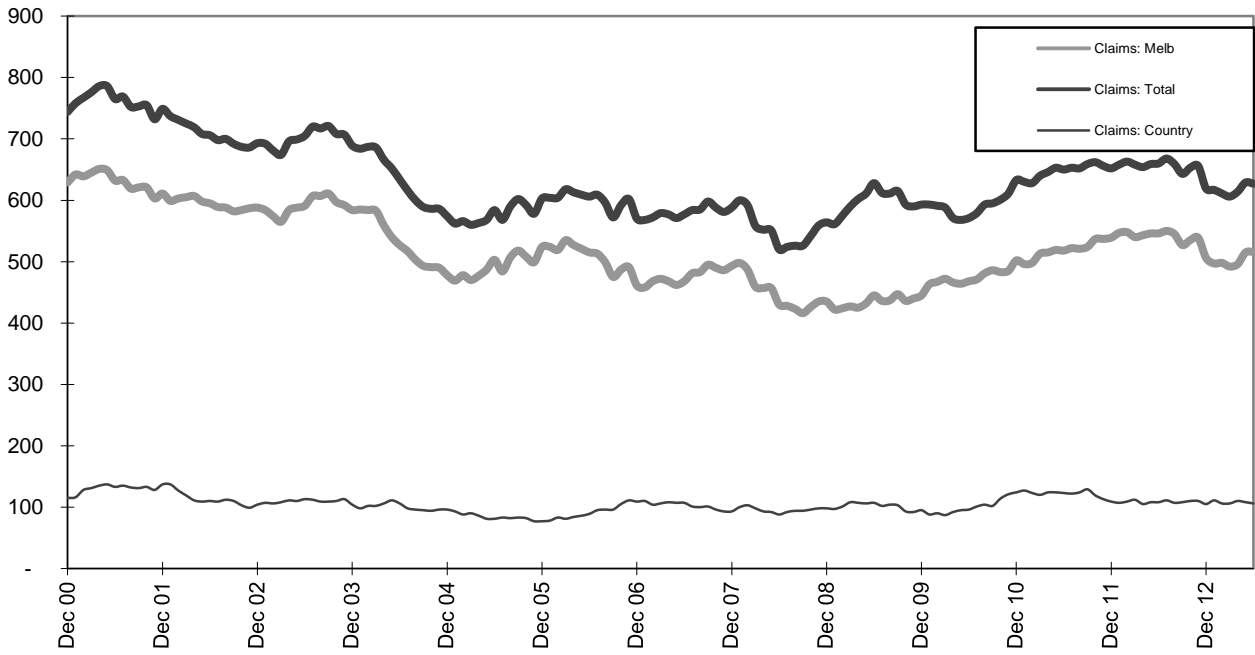
Graph 2b - Driver fatalities (Melbourne/country)



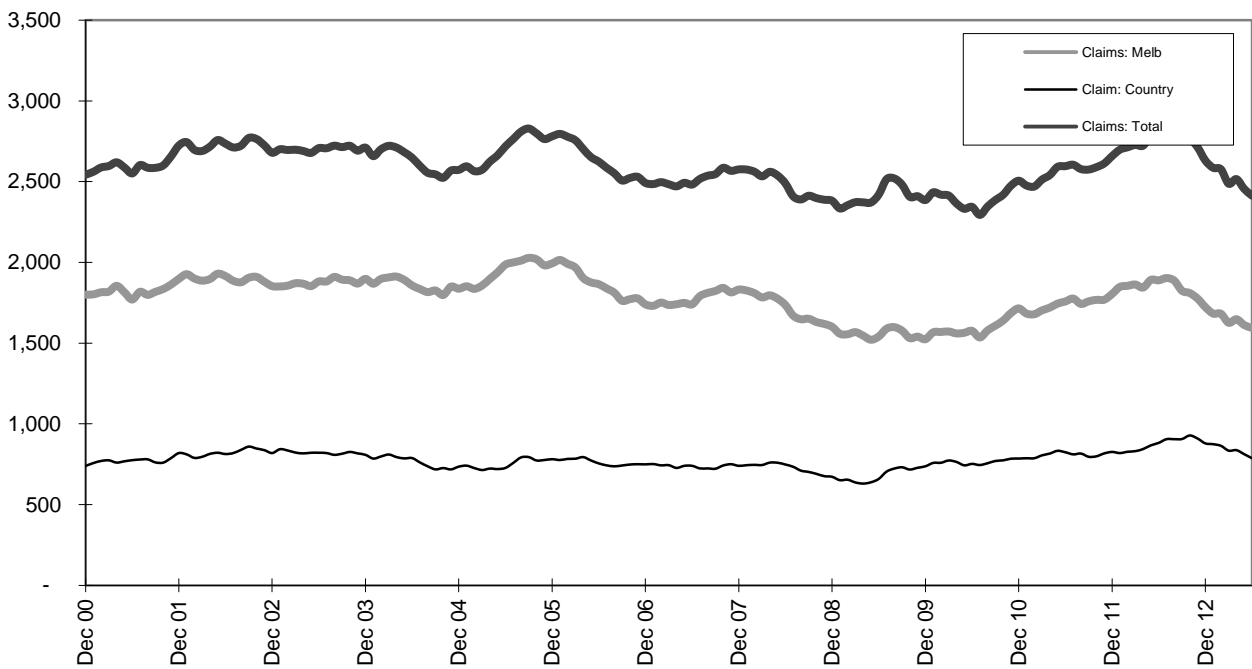
Graph 2c - Passenger fatalities (Melbourne/country)



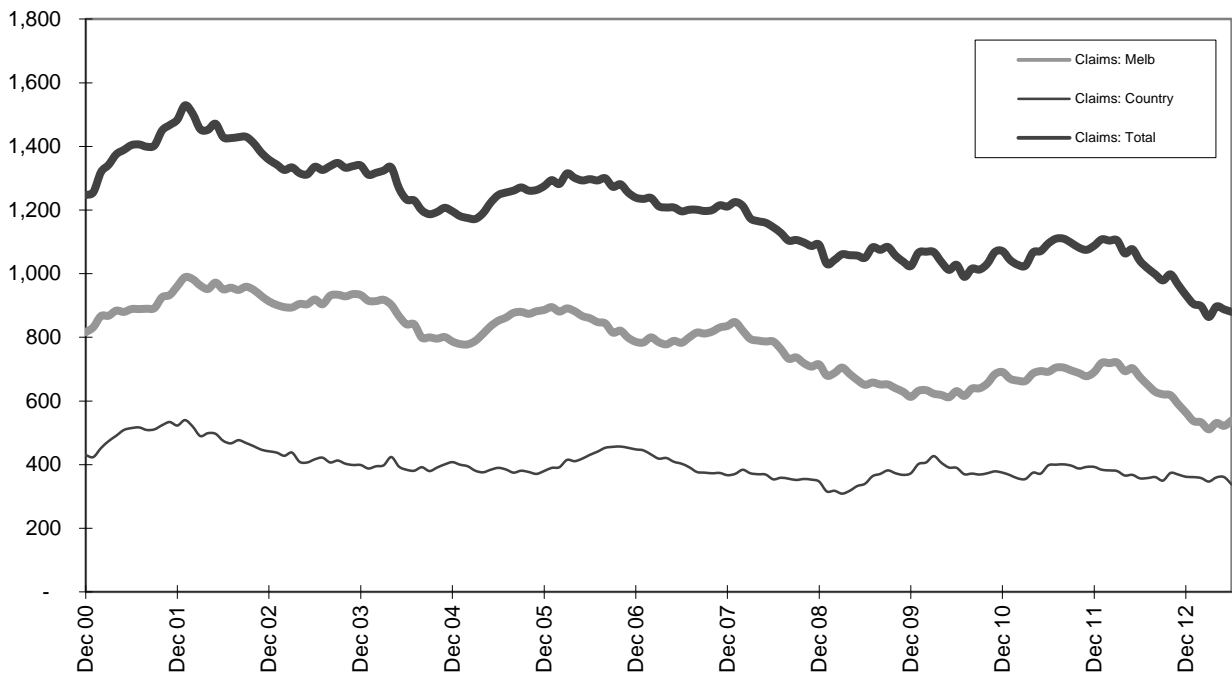
Graph 2d - Motorcyclist fatalities (Melbourne/country)



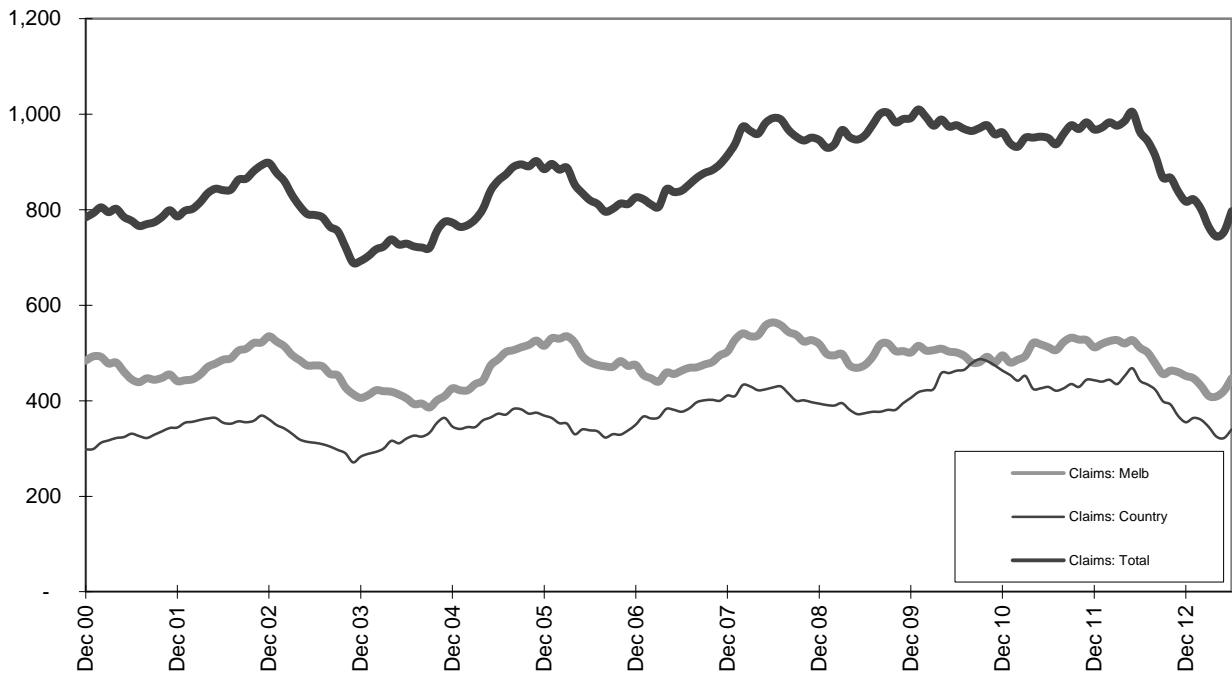
Graph 3a - Pedestrian Claims involving an acute hospital admission (Melbourne/country)



Graph 3b - Driver Claims involving an acute hospital admission (Melbourne/country)



Graph 3c - Passenger Claims involving an acute hospital admission (Melbourne/country)



Graph 3d - Motorcyclist Claims involving an acute hospital admission (Melbourne/country)