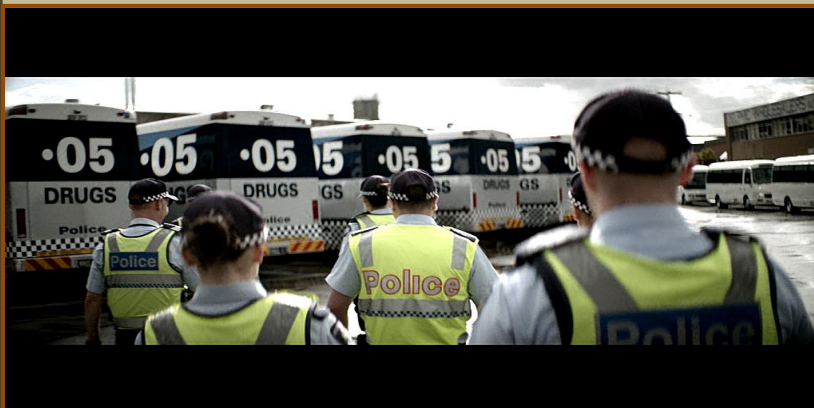


ROAD SAFETY STATISTICAL SUMMARY

September 2015



**TRANSPORT
ACCIDENT
COMMISSION**

60 Brougham Street
Geelong Vic 3220
PO Box 742
Geelong Vic 3220
Ausdoc DX 216079 Geelong

Telephone 1300 654 329
STD Toll Free 1800 332 556
Fax: 03 9656 9300
www.tac.vic.gov.au
ABN 22 033 947 623

Contents

Status Report.....	4
Fatalities.....	4
Claims involving an acute hospital admission*	5
Fatalities: 12 months to September 2015.....	6
Claims involving acute hospitalisation over 14 days: 12 months to March 2015 (claim acceptance date).....	8
Claims involving an acute hospital admission: 12 months to March 2015 (claim acceptance date).....	10
Fatalities: Victorian monthly totals since 1951	12
Fatalities by Week (2009 to 2015).....	13
The National Picture.....	14
Booze-Bus Random Breath Testing	15
Mobile Safety Camera Data	15
Explanations and References	16
Useful Internet Sites	17
Figures	18

Note about the data in this report

- All data provided in this report is the data most recently available at time of production. Fatalities, breath-test data and safety camera data are updated to the end of report month. A 6-month lag applies to TAC claims data.
- Reported data will have one extra day of exposure for leap years.
- Data is subject to revision as additional information about known accidents/claims is received, and as new accident/claim reports are received and processed.

*An acute hospital admission refers to a hospital admission that occurred within 7 days of accident.

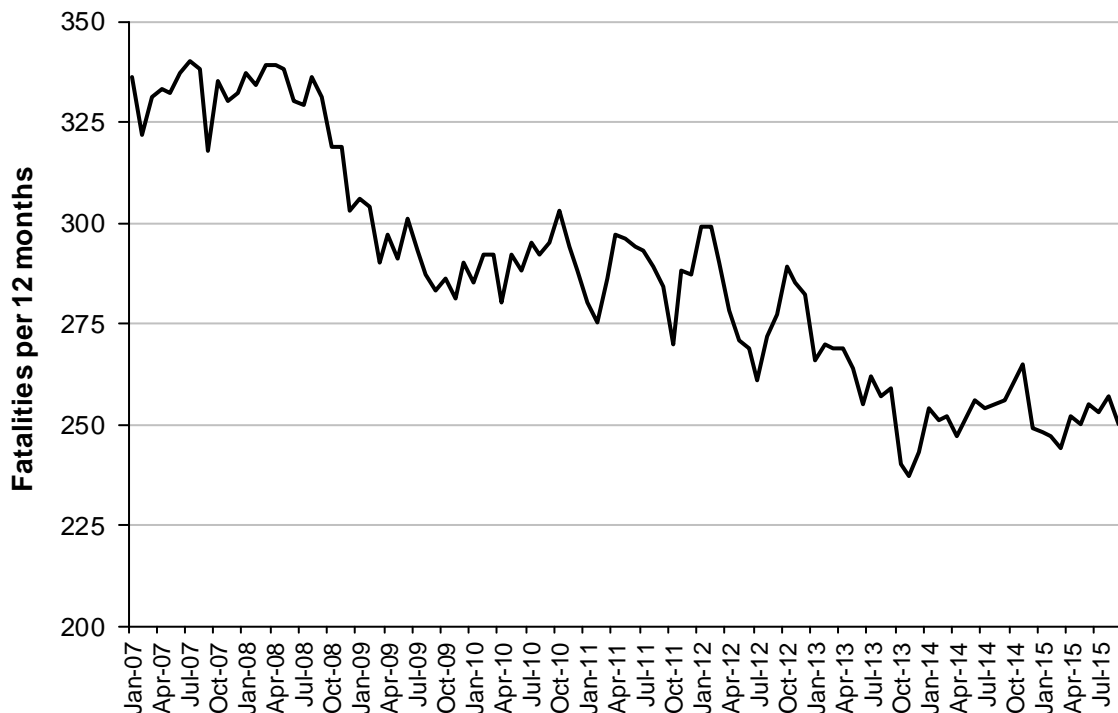
Status Report

Fatalities

- The rolling 12 month number of road fatalities in September 2015 stands at 250. The number of fatalities in 2014 equally stood at 256.
- 13 people were fatally injured in September 2015 on Victorian roads. This compares to 20 in September 2014.

Fatalities (rolling 12 month, to end September 2015)

Category	2015	2014	2013	2015 v 2014		2015 v 2013		5 Year Av
Fatal Injuries (Rolling 12 Month Total)								
Fatal (to September)	250	256	259	-6	(-2%)	-9	(-3%)	265
per 10,000 veh	0.55	0.57	0.59	-0.02	(-4%)	-0.04	(-7%)	0.60
per 100,000 pop	4.22	4.40	4.54	-0.18	(-4%)	-0.32	(-7%)	4.65
Accidents (Rolling 12 Month Total)								
Fatal (to September)	229	226	239	3	(+1%)	-10	(-4%)	242
per 10,000 veh	0.50	0.50	0.54	0.00	(+0%)	-0.04	(-7%)	0.55
per 100,000 pop	3.87	3.89	4.19	-0.02	(-1%)	-0.32	(-8%)	4.24

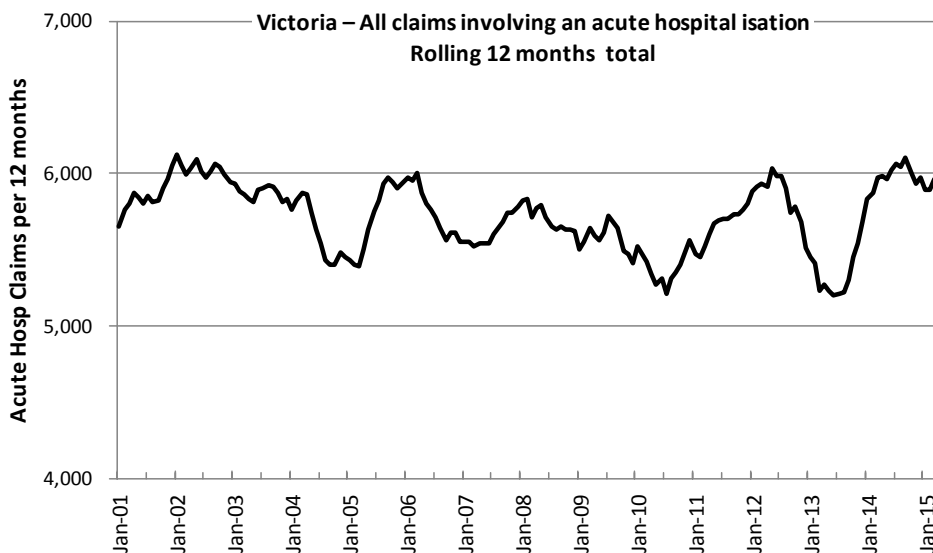
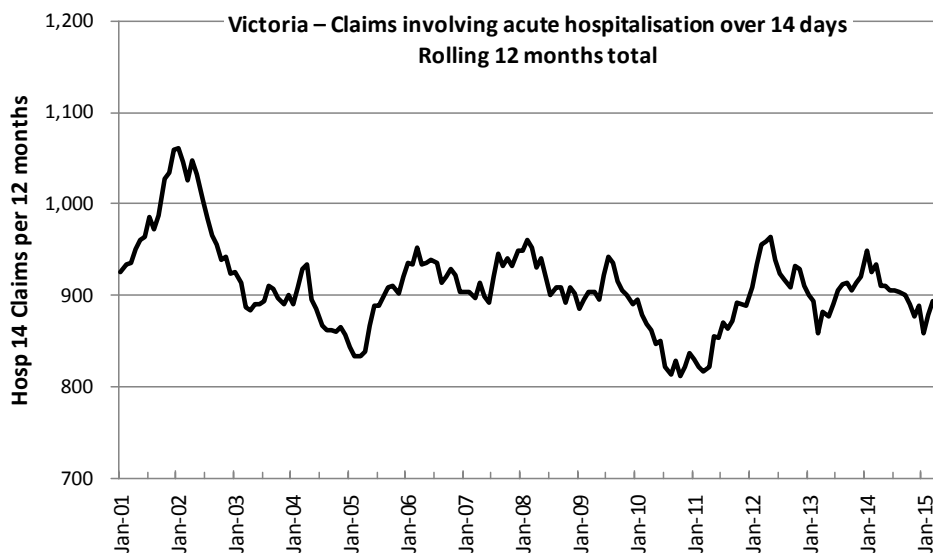


Victoria – Fatalities, rolling 12 months total

Claims involving an acute hospital admission*

(by claim acceptance date – rolling 12 month, to midnight 31 March 2015)

Category	2015	2014	2013	2015 v 2014		2015 v 2013		5 Year Av
Claims involving an acute hospitalisation over 14 days (Rolling 12 Month Total)								
Claims (to March)	893	933	859	-40	(-4%)	+34	(+4%)	892
per 100,000 pop	15.2	16.2	15.2	-1.0	(-6%)	0.0	(+0%)	15.6
per 10,000 veh	2.0	2.1	2.0	-0.1	(-5%)	0.0	(+0%)	2.0
All claims involving an acute hospitalisation (Rolling 12 Month Total)								
Claims (to March)	5,961	5,969	5,235	-8	(-0%)	+726	(+14%)	5,724
per 100,000 pop	101.6	103.4	92.6	-1.8	(-2%)	+9.0	(+10%)	100.3
per 10,000 veh	13.1	13.4	12.0	-0.3	(-2%)	+1.1	(+9%)	13.1



*An acute hospital admission refers to a hospital admission that occurred within 7 days of accident.

Fatalities: 12 months to September 2015

Category	2015	2014	2013	2015 v 2014		2015 v 2013		5 Year Av
Overview								
Fatalities	250	256	259	-6	(-2%)	-9	(-3%)	265
Accidents	229	226	239	+3	(+1%)	-10	(-4%)	242
Sex								
Female	72	73	85	-1	(-1%)	-13	(-15%)	77
Male	178	183	174	-5	(-3%)	+4	(+2%)	188
Roaduser								
Bicyclist	10	8	5	+2	(+25%)	+5	(+100%)	8
Driver	121	116	133	+5	(+4%)	-12	(-9%)	125
Motorcyclist	31	31	41		(0%)	-10	(-24%)	39
Passenger	51	54	48	-3	(-6%)	+3	(+6%)	52
Pedestrian	37	47	32	-10	(-21%)	+5	(+16%)	41
Location								
Melbourne	113	109	111	+4	(+4%)	+2	(+2%)	116
Rural Victoria	137	147	148	-10	(-7%)	-11	(-7%)	149
Agegroup								
0-4	3	3	2	0	(0%)	+1	(+50%)	3
5-15	5	8	8	-3	(-38%)	-3	(-38%)	7
16-17	12	5	3	+7	(+140%)	+9	(+300%)	7
18-20	21	12	23	+9	(+75%)	-2	(-9%)	23
21-25	23	26	29	-3	(-12%)	-6	(-21%)	30
26-29	22	18	13	+4	(+22%)	+9	(+69%)	19
30-39	31	37	36	-6	(-16%)	-5	(-14%)	35
40-49	35	27	34	+8	(+30%)	+1	(+3%)	33
50-59	26	34	30	-8	(-24%)	-4	(-13%)	31
60-69	29	32	28	-3	(-9%)	+1	(+4%)	29
70+	43	54	51	-11	(-20%)	-8	(-16%)	48
Alctime								
High (Melb)	61	56	65	+5	(+9%)	-4	(-6%)	61
High (Rural)	64	50	64	+14	(+28%)	0	(0%)	67
High (Vic)	125	106	129	+19	(+18%)	-4	(-3%)	129
Low (Melb)	52	53	46	-1	(-2%)	+6	(+13%)	55
Low (Rural)	73	97	84	-24	(-25%)	-11	(-13%)	82
Low (Vic)	125	150	130	-25	(-17%)	-5	(-4%)	137
Accident Type								
Intersection								
Adjacent direction	36	34	32	+2	(+6%)	+4	(+13%)	32
Opposing direction	11	7	2	+4	(+57%)	+9	(+450%)	7
Mid-block/other								
Head on	28	44	43	-16	(-36%)	-15	(-35%)	38
Same direction	11	8	19	+3	(+38%)	-8	(-42%)	13
Manoeuvre/o'taking	16	10	10	+6	(+60%)	+6	(+60%)	14
On path	4	9	2	-5	(-56%)	+2	(+100%)	6
Single vehicle	103	93	112	+10	(+11%)	-9	(-8%)	109
Other (incl peds)	41	51	39	-10	(-20%)	+2	(+5%)	47

Fatalities: 12 months to September 2015 – Continued

Category	2015	2014	2013	2015 v 2014		2015 v 2013		5 Year Av
Police Service Area (based on Local Government Area (see p.13))								
BALLARAT	5	5	5	0	(0%)	0	(0%)	6
BANYULE	4	0	4	+4		0	(0%)	3
BASS COAST	4	9	6	-5	(-56%)	-2	(-33%)	7
BAW BAW	2	5	8	-3	(-60%)	-6	(-75%)	6
BENALLA	16	8	9	+8	(+100%)	+7	(+78%)	10
BENDIGO	4	4	8	0	(0%)	-4	(-50%)	6
BOROONDARA	2	2	7	0	(0%)	-5	(-71%)	3
BRIMBANK	4	5	6	-1	(-20%)	-2	(-33%)	6
CAMPASPE	4	7	6	-3	(-43%)	-2	(-33%)	5
CARDINIA	7	7	1	0	(0%)	+6	(+600%)	6
CASEY	4	6	8	-2	(-33%)	-4	(-50%)	6
CENTRAL GOLDFIELDS	2	5	1	-3	(-60%)	+1	(+100%)	3
DAREBIN	2	2	1	0	(0%)	+1	(+100%)	3
EAST GIPPSLAND	11	3	4	+8	(+267%)	+7	(+175%)	7
FRANKSTON	3	4	0	-1	(-25%)	+3		3
GEELONG	5	5	13	0	(0%)	-8	(-62%)	9
GLEN EIRA	3	6	6	-3	(-50%)	-3	(-50%)	5
GREATER DANDENONG	5	3	5	+2	(+67%)	0	(0%)	4
HOBSONS BAY	2	0	3	+2		-1	(-33%)	1
HORSHAM	4	2	4	+2	(+100%)	0	(0%)	4
HUME	5	3	11	+2	(+67%)	-6	(-55%)	6
KINGSTON	1	5	8	-4	(-80%)	-7	(-88%)	5
KNOX	4	7	3	-3	(-43%)	+1	(+33%)	3
LA TROBE	2	3	7	-1	(-33%)	-5	(-71%)	5
MACEDON RANGES	8	11	5	-3	(-27%)	+3	(+60%)	6
MANNINGHAM	0	1	3	-1	(-100%)	-3	(-100%)	1
MARIBYRNONG	4	1	4	+3	(+300%)	0	(0%)	3
MAROONDAH	3	0	2	+3		+1	(+50%)	2
MELBOURNE	6	4	2	+2	(+50%)	+4	(+200%)	4
MELTON	6	8	5	-2	(-25%)	+1	(+20%)	6
MILDURA	1	6	3	-5	(-83%)	-2	(-67%)	3
MITCHELL	11	6	6	+5	(+83%)	+5	(+83%)	8
MONASH	2	4	3	-2	(-50%)	-1	(-33%)	4
MOONEE VALLEY	3	4	1	-1	(-25%)	+2	(+200%)	2
MOORABOOL	6	6	11	0	(0%)	-5	(-45%)	8
MORELAND	3	6	2	-3	(-50%)	+1	(+50%)	4
MORNINGTON PENINSULA	12	7	1	+5	(+71%)	+11	(+1100%)	7
NILLUMBIK	2	1	0	+1	(+100%)	+2		2
NORTHERN GRAMPPIANS	2	5	4	-3	(-60%)	-2	(-50%)	4
PORT PHILLIP	1	2	3	-1	(-50%)	-2	(-67%)	2
SHEPPARTON	5	2	7	+3	(+150%)	-2	(-29%)	6
SOUTHERN GRAMPPIANS	6	6	3	0	(0%)	+3	(+100%)	5
STONNINGTON	4	3	2	+1	(+33%)	+2	(+100%)	2
SURF COAST	11	3	5	+8	(+267%)	+6	(+120%)	7
SWAN HILL	3	8	7	-5	(-63%)	-4	(-57%)	6
WANGARATTA	5	11	12	-6	(-55%)	-7	(-58%)	10
WARRNAMBOOL	10	14	7	-4	(-29%)	+3	(+43%)	9
WELLINGTON	4	7	3	-3	(-43%)	+1	(+33%)	5
WHITEHORSE	4	3	1	+1	(+33%)	+3	(+300%)	4
WHITTLESEA	4	5	3	-1	(-20%)	+1	(+33%)	5
WODONGA	5	6	4	-1	(-17%)	+1	(+25%)	4
WYNDHAM	6	4	7	+2	(+50%)	-1	(-14%)	6
YARRA	1	0	2	+1		-1	(-50%)	1
YARRA RANGES	7	6	7	+1	(+17%)	0	(0%)	7

Claims involving acute hospitalisation over 14 days: 12 months to March 2015 (claim acceptance date)

Category	2015	2014	2013	2015 v 2014		2015 v 2013		5 Year Av
Overview								
Claims	893	933	859	-40	(-4%)	+34	(+4%)	892
Sex								
Female	368	385	359	-17	(-4%)	+9	(+3%)	363
Male	523	548	499	-25	(-5%)	+24	(+5%)	527
Roaduser								
Driver	350	375	373	-25	(-7%)	-23	(-6%)	352
Passenger	139	154	130	-15	(-10%)	+9	(+7%)	142
Motorcyclist	178	147	134	+31	(+21%)	+44	(+33%)	161
Pedestrian	161	207	167	-46	(-22%)	-6	(-4%)	179
Cyclist	36	33	32	+3	(+9%)	+4	(+13%)	37
Train/Tram	12	4	7	+8	(+200%)	+5	(+71%)	8
Location								
Melbourne	567	588	551	-21	(-4%)	+16	(+3%)	572
Rural Victoria	300	335	305	-35	(-10%)	-5	(-2%)	310
Agegroup								
0-4	4	2	2	+2	(+100%)	+2	(+100%)	3
5-15	18	11	9	+7	(+64%)	+9	(+100%)	13
16-17	10	15	18	-5	(-33%)	-8	(-44%)	18
18-20	47	69	53	-22	(-32%)	-6	(-11%)	57
21-25	83	77	80	+6	(+8%)	+3	(+4%)	81
26-29	55	44	38	+11	(+25%)	+17	(+45%)	51
30-39	102	102	104	0	(0%)	-2	(-2%)	107
40-49	117	123	115	-6	(-5%)	+2	(+2%)	118
50-59	106	109	104	-3	(-3%)	+2	(+2%)	104
60-69	96	111	106	-15	(-14%)	-10	(-9%)	103
70+	255	270	230	-15	(-6%)	+25	(+11%)	236
Alctime								
High (Melb)	215	250	233	-35	(-14%)	-18	(-8%)	241
High (Rural)	117	127	121	-10	(-8%)	-4	(-3%)	123
High (Vic)	332	377	354	-45	(-12%)	-22	(-6%)	365
Low (Melb)	352	338	318	+14	(+4%)	+34	(+11%)	331
Low (Rural)	183	208	184	-25	(-12%)	-1	(-1%)	187
Low (Vic)	535	546	502	-11	(-2%)	+33	(+7%)	518
Accident Type								
Intersection								
Adjacent direction	100	117	118	-17	(-15%)	-18	(-15%)	113
Opposing direction	49	68	52	-19	(-28%)	-3	(-6%)	58
Mid-block/other								
Head on	88	83	90	+5	(+6%)	-2	(-2%)	84
Same direction	84	73	85	+11	(+15%)	-1	(-1%)	85
Manoeuvre/o'taking	48	64	64	-16	(-25%)	-16	(-25%)	55
On path	35	21	22	+14	(+67%)	+13	(+59%)	25
Single vehicle	274	255	218	+19	(+7%)	+56	(+26%)	250
Other (incl peds)	215	252	210	-37	(-15%)	+5	(+2%)	222

Note: Excludes rejected claims and claims for interstate crashes.

Claims involving acute hospitalisation over 14 days: 12 months to March 2015 (claim acceptance date) – Continued

Category	2015	2014	2013	2015 v 2013		2015 v 2014		5 Year Av
Police Service Area (based on Local Government Area (see p.13))								
BALLARAT	10	26	9	-16	(-62%)	+1	(+11%)	15
BANYULE	7	10	10	-3	(-30%)	-3	(-30%)	10
BASS COAST	16	18	14	-2	(-11%)	+2	(+14%)	16
BAW BAW	13	5	10	+8	(+160%)	+3	(+30%)	10
BENALLA	24	15	21	+9	(+60%)	+3	(+14%)	20
BENDIGO	8	20	10	-12	(-60%)	-2	(-20%)	16
BOROONDARA	25	21	18	+4	(+19%)	+7	(+39%)	23
BRIMBANK	30	19	24	+11	(+58%)	+6	(+25%)	23
CAMPASPE	5	8	8	-3	(-38%)	-3	(-38%)	6
CARDINIA	17	10	13	+7	(+70%)	+4	(+31%)	15
CASEY	30	28	25	+2	(+7%)	+5	(+20%)	26
CENTRAL GOLDFIELDS	2	8	7	-6	(-75%)	-5	(-71%)	5
DAREBIN	16	18	19	-2	(-11%)	-3	(-16%)	18
EAST GIPPSLAND	10	8	12	+2	(+25%)	-2	(-17%)	11
FRANKSTON	15	12	10	+3	(+25%)	+5	(+50%)	15
GEELONG	26	31	35	-5	(-16%)	-9	(-26%)	28
GLEN EIRA	20	40	19	-20	(-50%)	+1	(+5%)	29
GREATER DANDENONG	21	32	24	-11	(-34%)	-3	(-13%)	27
HOBSONS BAY	7	13	11	-6	(-46%)	-4	(-36%)	10
HORSHAM	8	6	6	+2	(+33%)	+2	(+33%)	7
HUME	24	25	25	-1	(-4%)	-1	(-4%)	25
KINGSTON	20	22	21	-2	(-9%)	-1	(-5%)	20
KNOX	13	19	22	-6	(-32%)	-9	(-41%)	16
LA TROBE	13	10	12	+3	(+30%)	+1	(+8%)	14
MACEDON RANGES	17	24	16	-7	(-29%)	+1	(+6%)	18
MANNINGHAM	12	15	19	-3	(-20%)	-7	(-37%)	14
MARIBYRNONG	6	7	17	-1	(-14%)	-11	(-65%)	12
MAROONDAH	4	7	5	-3	(-43%)	-1	(-20%)	8
MELBOURNE	33	28	34	+5	(+18%)	-1	(-3%)	31
MELTON	13	12	20	+1	(+8%)	-7	(-35%)	13
MILDURA	6	8	9	-2	(-25%)	-3	(-33%)	8
MITCHELL	11	29	25	-18	(-62%)	-14	(-56%)	18
MONASH	19	25	15	-6	(-24%)	+4	(+27%)	22
MOONEE VALLEY	26	17	20	+9	(+53%)	+6	(+30%)	18
MOORABOOL	20	15	15	+5	(+33%)	+5	(+33%)	15
MORELAND	27	32	24	-5	(-16%)	+3	(+13%)	26
MORNINGTON PENINSULA	26	23	34	+3	(+13%)	-8	(-24%)	29
NILLUMBIK	9	5	8	+4	(+80%)	+1	(+13%)	7
NORTHERN GRAMPIANS	13	11	11	+2	(+18%)	+2	(+18%)	9
PORT PHILLIP	22	15	7	+7	(+47%)	+15	(+214%)	13
SHEPPARTON	8	15	14	-7	(-47%)	-6	(-43%)	11
SOUTHERN GRAMPIANS	14	6	8	+8	(+133%)	+6	(+75%)	9
STONNINGTON	16	14	11	+2	(+14%)	+5	(+45%)	16
SURF COAST	15	13	7	+2	(+15%)	+8	(+114%)	13
SWAN HILL	15	6	9	+9	(+150%)	+6	(+67%)	8
WANGARATTA	14	19	12	-5	(-26%)	+2	(+17%)	17
WARRNAMBOOL	12	13	14	-1	(-8%)	-2	(-14%)	14
WELLINGTON	11	7	10	+4	(+57%)	+1	(+10%)	10
WHITEHORSE	21	21	15	0	(0%)	+6	(+40%)	20
WHITTLESEA	19	24	28	-5	(-21%)	-9	(-32%)	21
WODONGA	9	14	11	-5	(-36%)	-2	(-18%)	11
WYNDHAM	27	20	21	+7	(+35%)	+6	(+29%)	21
YARRA	14	18	10	-4	(-22%)	+4	(+40%)	13
YARRA RANGES	28	36	22	-8	(-22%)	+6	(+27%)	31

Note: excludes rejected claims and claims for interstate crashes

Claims involving an acute hospital admission: 12 months to March 2015 (claim acceptance date)

Category	2015	2014	2013	2015 v 2014		2015 v 2013		5 Year Av
Overview								
Claims	5,961	5,969	5,235	-8	(-0%)	+726	(+14%)	5,724
Sex								
Female	2,549	2,459	2,217	+90	(+4%)	+332	(+15%)	2,418
Male	3,404	3,504	3,017	-100	(-3%)	+387	(+13%)	3,303
Roaduser								
Driver	2,652	2,667	2,492	-15	(-1%)	+160	(+6%)	2,610
Passenger	1,048	1,021	867	+27	(+3%)	+181	(+21%)	1,014
Motorcyclist	1,102	1,116	765	-14	(-1%)	+337	(+44%)	982
Pedestrian	607	661	607	-54	(-8%)	0	(0%)	635
Cyclist	402	393	347	+9	(+2%)	+55	(+16%)	370
Train/Tram	34	31	24	+3	(+10%)	+10	(+42%)	28
Location								
Melbourne	4,010	4,030	3,445	-20	(-0%)	+565	(+16%)	3,857
Rural Victoria	1,720	1,827	1,753	-107	(-6%)	-33	(-2%)	1,785
Agegroup								
0-4	53	54	49	-1	(-2%)	+4	(+8%)	51
5-15	218	177	182	+41	(+23%)	+36	(+20%)	191
16-17	97	100	106	-3	(-3%)	-9	(-8%)	112
18-20	475	526	474	-51	(-10%)	+1	(+0%)	517
21-25	738	762	625	-24	(-3%)	+113	(+18%)	713
26-29	484	448	395	+36	(+8%)	+89	(+23%)	443
30-39	925	866	819	+59	(+7%)	+106	(+13%)	877
40-49	908	907	767	+1	(+0%)	+141	(+18%)	861
50-59	764	742	665	+22	(+3%)	+99	(+15%)	717
60-69	519	556	452	-37	(-7%)	+67	(+15%)	511
70+	780	831	701	-51	(-6%)	+79	(+11%)	732
Alctime								
High (Melb)	1,658	1,746	1,506	-88	(-5%)	+152	(+10%)	1,695
High (Rural)	713	725	744	-12	(-2%)	-31	(-4%)	750
High (Vic)	2,371	2,471	2,250	-100	(-4%)	+121	(+5%)	2,445
Low (Melb)	2,352	2,284	1,939	+68	(+3%)	+413	(+21%)	2,162
Low (Rural)	1,007	1,102	1,009	-95	(-9%)	-2	(-0%)	1,034
Low (Vic)	3,359	3,386	2,948	-27	(-1%)	+411	(+14%)	3,196
Accident Type								
Intersection								
Adjacent direction	715	861	754	-146	(-17%)	-39	(-5%)	817
Opposing direction	494	521	471	-27	(-5%)	+23	(+5%)	483
Mid-block/other								
Head on	326	320	305	+6	(+2%)	+21	(+7%)	325
Same direction	908	835	788	+73	(+9%)	+120	(+15%)	882
Manoeuvre/o'taking	313	354	294	-41	(-12%)	+19	(+6%)	322
On path	284	268	218	+16	(+6%)	+66	(+30%)	236
Single vehicle	1,737	1,648	1,381	+89	(+5%)	+356	(+26%)	1,598
Other (incl peds)	1,184	1,162	1,024	+22	(+2%)	+160	(+16%)	1,062

Note: excludes rejected claims and claims for interstate crashes

Claims involving an acute hospital admission: 12 months to March 2015 (claim acceptance date) – Continued

Category	2015	2014	2013	2015 v 2014		2015 v 2013		5 Year Av
Police Service Area (based on Local Government Area (see p.13))								
BALLARAT	69	110	89	-41	(-37%)	-20	(-22%)	95
BANYULE	57	61	61	-4	(-7%)	-4	(-7%)	60
BASS COAST	86	88	65	-2	(-2%)	+21	(+32%)	82
BAW BAW	68	54	61	+14	(+26%)	+7	(+11%)	60
BENALLA	102	124	106	-22	(-18%)	-4	(-4%)	117
BENDIGO	86	85	113	+1	(+1%)	-27	(-24%)	97
BOROONDARA	130	151	107	-21	(-14%)	+23	(+21%)	135
BRIMBANK	153	141	144	+12	(+9%)	+9	(+6%)	147
CAMPASPE	36	34	42	+2	(+6%)	-6	(-14%)	38
CARDINIA	122	99	80	+23	(+23%)	+42	(+53%)	99
CASEY	253	266	206	-13	(-5%)	+47	(+23%)	239
CENTRAL GOLDFIELDS	31	30	27	+1	(+3%)	+4	(+15%)	26
DAREBIN	89	95	96	-6	(-6%)	-7	(-7%)	98
EAST GIPPSLAND	59	50	86	+9	(+18%)	-27	(-31%)	63
FRANKSTON	118	109	117	+9	(+8%)	+1	(+1%)	129
GEELONG	191	241	207	-50	(-21%)	-16	(-8%)	222
GLEN EIRA	177	210	135	-33	(-16%)	+42	(+31%)	176
GREATER DANDENONG	228	270	186	-42	(-16%)	+42	(+23%)	218
HOBSONS BAY	63	73	54	-10	(-14%)	+9	(+17%)	66
HORSHAM	31	32	29	-1	(-3%)	+2	(+7%)	34
HUME	192	165	129	+27	(+16%)	+63	(+49%)	158
KINGSTON	141	139	128	+2	(+1%)	+13	(+10%)	133
KNOX	107	117	84	-10	(-9%)	+23	(+27%)	111
LA TROBE	56	65	57	-9	(-14%)	-1	(-2%)	65
MACEDON RANGES	88	120	74	-32	(-27%)	+14	(+19%)	89
MANNINGHAM	66	71	76	-5	(-7%)	-10	(-13%)	69
MARIBYRNONG	58	79	66	-21	(-27%)	-8	(-12%)	75
MAROONDAH	57	54	55	+3	(+6%)	+2	(+4%)	64
MELBOURNE	245	254	243	-9	(-4%)	+2	(+1%)	239
MELTON	79	83	67	-4	(-5%)	+12	(+18%)	76
MILDURA	21	49	33	-28	(-57%)	-12	(-36%)	36
MITCHELL	101	103	97	-2	(-2%)	+4	(+4%)	91
MONASH	200	199	175	+1	(+1%)	+25	(+14%)	179
MOONEE VALLEY	131	115	102	+16	(+14%)	+29	(+28%)	110
MOORABOOL	104	113	98	-9	(-8%)	+6	(+6%)	99
MORELAND	160	146	121	+14	(+10%)	+39	(+32%)	144
MORNINGTON PENINSULA	147	137	132	+10	(+7%)	+15	(+11%)	156
NILLUMBIK	37	26	42	+11	(+42%)	-5	(-12%)	37
NORTHERN GRAMPPIANS	54	29	42	+25	(+86%)	+12	(+29%)	39
PORT PHILLIP	170	126	98	+44	(+35%)	+72	(+73%)	124
SHEPPARTON	67	73	71	-6	(-8%)	-4	(-6%)	65
SOUTHERN GRAMPPIANS	49	41	48	+8	(+20%)	+1	(+2%)	46
STONNINGTON	146	138	115	+8	(+6%)	+31	(+27%)	132
SURF COAST	74	72	46	+2	(+3%)	+28	(+61%)	69
SWAN HILL	43	35	35	+8	(+23%)	+8	(+23%)	37
WANGARATTA	98	102	98	-4	(-4%)	0	(0%)	99
WARRNAMBOOL	67	66	77	+1	(+2%)	-10	(-13%)	82
WELLINGTON	87	56	63	+31	(+55%)	+24	(+38%)	72
WHITEHORSE	101	119	103	-18	(-15%)	-2	(-2%)	116
WHITTLESEA	133	150	153	-17	(-11%)	-20	(-13%)	137
WODONGA	52	55	89	-3	(-5%)	-37	(-42%)	63
WYNDHAM	170	153	130	+17	(+11%)	+40	(+31%)	146
YARRA	116	120	80	-4	(-3%)	+36	(+45%)	107
YARRA RANGES	164	164	160	0	(0%)	+4	(+2%)	176

Note: excludes rejected claims and claims for interstate crashes

Fatalities: Victorian monthly totals since 1951

Year	Jan	Feb	Mar	Apr	May	Jun	Jul	Aug	Sep	Oct	Nov	Dec	Totals
1951							61	59	52	38	29	41	
1952	45	40	54	61	54	69	67	55	44	44	31	20	584
1953	23	28	54	58	49	42	50	37	44	27	36	32	480
1954	44	42	28	60	55	36	63	33	25	52	30	41	509
1955	44	36	45	55	48	56	64	44	44	32	40	40	548
1956	34	48	51	67	53	65	71	47	39	39	44	48	606
1957	50	41	46	58	52	54	57	53	51	46	32	49	589
1958	50	38	42	58	54	41	54	53	57	40	57	52	596
1959	50	57	61	50	75	55	42	48	52	55	63	63	671
1960	49	53	57	76	70	70	67	62	61	77	52	66	760
1961	63	57	68	74	58	68	78	82	59	62	60	65	794
1962	65	41	76	78	72	80	70	77	62	53	64	70	808
1963	67	56	65	85	66	68	77	55	55	58	61	67	780
1964	73	71	78	71	83	89	80	89	67	66	62	75	904
1965	63	64	86	88	80	87	79	69	81	77	68	87	929
1966	75	59	75	103	74	86	87	80	75	66	90	85	955
1967	61	79	91	97	81	71	59	67	70	68	60	83	887
1968	70	78	86	78	73	76	73	77	72	80	81	105	949
1969	79	68	79	87	86	77	87	83	87	83	94	101	1,011
1970	85	84	106	80	87	88	110	106	78	95	68	74	1,061
1971	83	75	77	68	76	86	85	72	78	73	74	76	923
1972	61	62	75	82	75	71	98	85	83	62	80	81	915
1973	75	75	95	85	64	66	61	85	89	88	66	86	935
1974	56	62	81	60	70	73	67	62	53	70	80	72	806
1975	67	65	87	73	97	94	57	75	69	66	71	89	910
1976	79	78	88	78	69	79	60	70	82	78	77	100	938
1977	65	71	89	79	65	79	70	91	68	74	96	107	954
1978	75	54	95	63	64	69	68	77	65	84	83	72	869
1979	63	60	86	75	45	64	66	75	69	79	72	93	847
1980	48	55	66	59	47	56	60	53	45	58	61	49	657
1981	69	60	58	61	74	65	61	63	68	71	59	57	766
1982	55	53	59	59	67	45	47	71	53	69	65	66	709
1983	42	59	53	63	62	61	65	51	59	43	54	52	664
1984	65	48	58	50	56	48	46	50	71	53	55	58	658
1985	56	47	50	65	75	50	51	50	58	61	56	64	683
1986	56	50	70	69	59	53	42	54	54	52	59	51	669
1987	62	43	57	52	63	59	62	49	62	61	55	80	705
1988	49	58	69	54	79	50	54	52	64	59	43	70	701
1989	76	65	80	59	67	73	52	65	82	50	41	66	776
1990	48	44	55	39	56	64	41	34	48	35	40	44	548
1991	45	39	70	30	34	29	44	47	41	36	35	53	503
1992	34	33	34	47	33	29	23	27	28	38	30	40	396
1993	27	40	37	39	44	33	33	27	34	39	43	40	436
1994	36	31	44	35	27	33	29	37	17	27	32	30	378
1995	38	35	26	33	34	41	27	34	34	32	38	46	418
1996	40	47	35	38	28	29	30	35	49	24	33	30	418
1997	36	25	30	30	40	22	39	26	26	29	39	35	377
1998	29	29	32	36	31	22	40	19	37	36	49	30	390
1999	32	31	35	35	34	24	35	26	28	38	29	37	384
2000	32	26	46	32	39	32	33	29	36	29	44	29	407
2001	44	30	31	32	31	41	34	37	35	51	41	37	444
2002	32	31	45	31	45	32	27	25	31	30	31	37	397
2003	21	41	36	28	31	28	20	23	23	24	24	31	330
2004	32	22	30	30	46	28	27	26	22	28	25	27	343
2005	33	27	47	21	29	23	30	25	25	33	17	36	346
2006	24	37	23	23	27	23	25	22	43	20	31	39	337
2007	23	23	32	25	26	28	28	20	23	37	26	41	332
2008	28	20	37	25	25	20	27	27	18	25	26	25	303
2009	31	18	23	32	19	30	19	21	14	28	21	34	290
2010	26	25	23	20	31	26	26	18	17	36	12	28	288
2011	18	20	34	31	30	24	25	14	12	22	30	27	287
2012	30	20	25	19	23	22	17	25	17	34	26	24	282
2013	14	24	24	19	18	13	24	20	19	15	23	30	243
2014	25	21	25	14	23	17	22	21	20	19	28	14	249
2015	25	22	23	21	21	22	18	25	13				
Ave	48	46	55	53	53	51	51	49	49	50	49	55	613
Max	85	84	106	103	97	94	110	106	89	95	96	107	1,061
Min	14	18	23	14	18	13	17	14	12	15	12	14	243

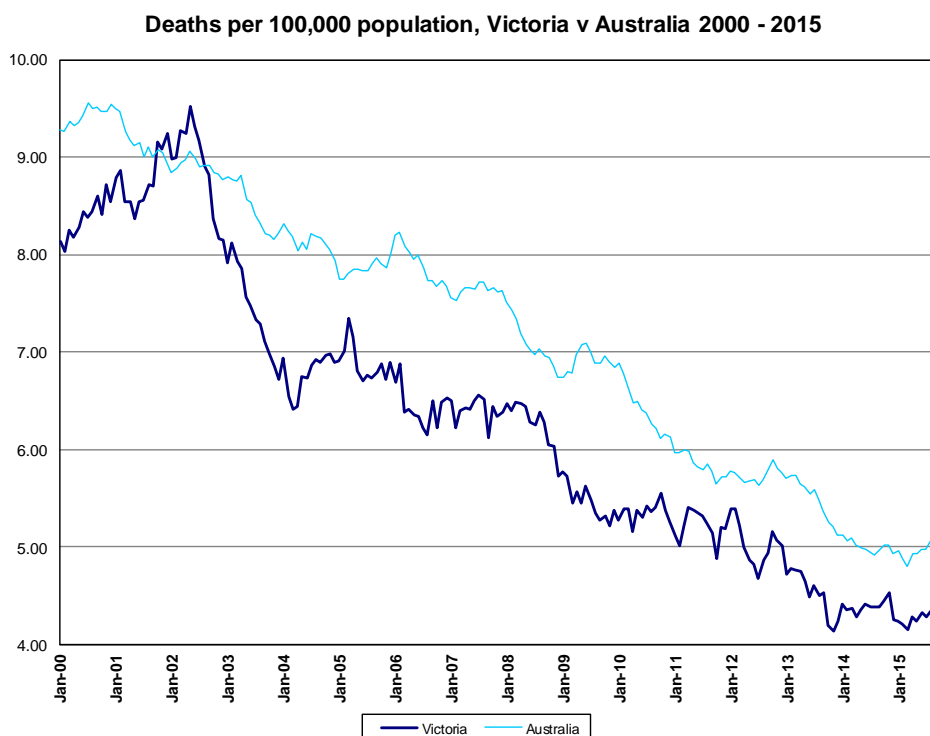
Fatalities by Week (2009 to 2015)

Week Ending	2009	2010	2011	2012	2013	2014	2015	Cumulative 2015	% Change 2015-2014	12 Month Moving Total
5-Jan	7	3	2	3	1	0	2	2	-	251
12-Jan	10	5	6	7	3	5	5	7	+40%	251
19-Jan	4	6	3	8	6	7	6	13	+8%	250
26-Jan	4	5	4	9	4	9	2	15	-29%	243
2-Feb	6	9	6	5	3	6	10	25	-7%	247
9-Feb	6	7	5	3	8	4	6	31	0%	249
16-Feb	7	4	6	7	6	8	4	35	-10%	245
23-Feb	4	8	3	6	6	2	6	41	0%	249
2-Mar	1	7	3	2	2	6	4	45	-4%	247
9-Mar	3	2	10	3	4	8	8	53	-4%	247
16-Mar	6	8	6	11	6	4	6	59	0%	249
23-Mar	6	3	9	5	10	4	2	61	-3%	247
30-Mar	8	7	9	6	2	6	3	64	-7%	244
6-Apr	5	4	6	7	4	6	3	67	-11%	241
13-Apr	5	5	9	2	6	6	6	73	-10%	241
20-Apr	11	7	7	6	4	2	8	81	-2%	247
27-Apr	9	1	6	3	5	2	5	86	+1%	250
4-May	6	6	6	10	6	3	4	90	+2%	251
11-May	7	8	6	2	3	4	6	96	+4%	253
18-May	1	4	7	4	1	3	4	100	+5%	254
25-May	2	11	10	6	2	5	4	104	+4%	253
1-Jun	6	5	5	2	9	9	5	109	0%	249
8-Jun	4	7	4	8	2	2	5	114	+3%	252
15-Jun	9	4	6	3	3	2	4	118	+4%	254
22-Jun	7	8	7	8	5	3	4	122	+5%	255
29-Jun	9	7	6	3	1	8	5	127	+2%	252
6-Jul	3	7	4	2	5	6	11	138	+6%	257
13-Jul	6	2	8	5	7	7	2	140	+2%	252
20-Jul	4	3	6	5	4	3	2	142	+1%	251
27-Jul	5	8	6	5	5	4	4	146	+1%	251
3-Aug	4	10	3	1	8	4	6	152	+3%	253
10-Aug	7	3	5	5	1	5	4	156	+2%	252
17-Aug	6	5	3	5	3	6	8	164	+3%	254
24-Aug	3	5	2	6	6	4	8	172	+6%	258
31-Aug	3	1	3	8	5	5	3	175	+4%	256
7-Sep	2	5	1	5	5	4	3	178	+3%	255
14-Sep	4	1	4	6	2	6	3	181	+2%	252
21-Sep	4	4	1	3	3	4	2	183	+1%	250
28-Sep	3	5	5	3	8	3	5	188	+2%	252
5-Oct	2	9	4	7	3	4				
12-Oct	6	10	5	8	2	8				
19-Oct	8	5	3	9	3	0				
26-Oct	8	7	3	6	3	8				
2-Nov	5	8	8	6	6	2				
9-Nov	3	1	6	7	8	3				
16-Nov	9	2	12	6	2	8				
23-Nov	6	3	9	5	8	3				
30-Nov	4	5	2	9	4	13				
7-Dec	5	4	10	7	6	5				
14-Dec	8	8	3	4	10	3				
21-Dec	11	6	7	1	9	3				
28-Dec	6	8	6	8	4	3				
31-Dec	2	2	1	1	1	1				
Total	290	288	287	282	243	249				

The National Picture

State	Fatalities (12 months to September)					2015 v 2014	
	2015	2014	2013	2012			
NSW	335	333	325	380	+2	(+1%)	
VIC	250	255	259	277	-5	(-2%)	
QLD	230	226	285	284	+4	(+2%)	
SA	108	93	100	90	+15	(+16%)	
WA	176	169	175	180	+7	(+4%)	
TAS	38	41	30	29	-3	(-7%)	
NT	46	39	40	54	+7	(+18%)	
ACT	12	9	10	8	+3	(+33%)	
AUST TOTAL	1,195	1,165	1,224	1,302	+30	(+3%)	
AUST minus VIC	945	910	965	1,025	+35	(+4%)	

State	Fatalities per 10,000 registered vehicles (12 months to September)			Fatalities per 100,000 population (12 months to September)		
	2015	2014	2013	2015	2014	2013
NSW	0.64	0.65	0.65	4.41	4.45	4.40
VIC	0.55	0.57	0.59	4.22	4.40	4.54
QLD	0.61	0.61	0.79	4.82	4.80	6.15
SA	0.80	0.70	0.77	6.36	5.53	6.00
WA	0.80	0.78	0.85	6.73	6.60	7.01
TAS	0.84	0.92	0.69	7.36	7.97	5.85
NT	2.96	2.55	2.68	18.45	16.00	16.78
ACT	0.42	0.32	0.36	3.09	2.34	2.62
AUST TOTAL	0.66	0.66	0.71	5.03	4.98	5.37
AUST minus VIC	0.70	0.69	0.75	5.22	5.14	5.58



Victoria v Australia - 12 Month Moving Fatality Rate

Booze-Bus Random Breath Testing

12 months to March 2015 (monthly totals)

	2014									2015		
	Apr	May	Jun	Jul	Aug	Sep	Oct	Nov	Dec	Jan	Feb	Mar
Melbourne	96,725	107,794	103200	110,427	110,124	101,857	100,252	86,261	99,008	95,430	76,758	84,559
Country	9,737	12,033	7,548	9,300	7,841	7,989	8,116	10,510	7,084	5,191	7,882	5,830
Vic Total	106,462	119,827	110,748	119,727	117,965	109,846	108,368	96,771	106,092	100,621	84,640	90,389

12 months to March 2015 vs previous 12 months

	2015	2014	2013	2015 v 2014	2015 v 2013
Melbourne	1,172,395	1,060,175	1,062,075	+112220 (+11%)	+110320 (+10%)
Country	99,061	90,264	101,223	+8797 (+10%)	-2162 (-2%)
Vic Total	1,271,456	1,150,439	1,163,298	+121017 (+11%)	+108158 (+9%)

Mobile Safety Camera Data

Speed Infringements Issued from Mobile Cameras (monthly totals)

Monthly Average = 32,664

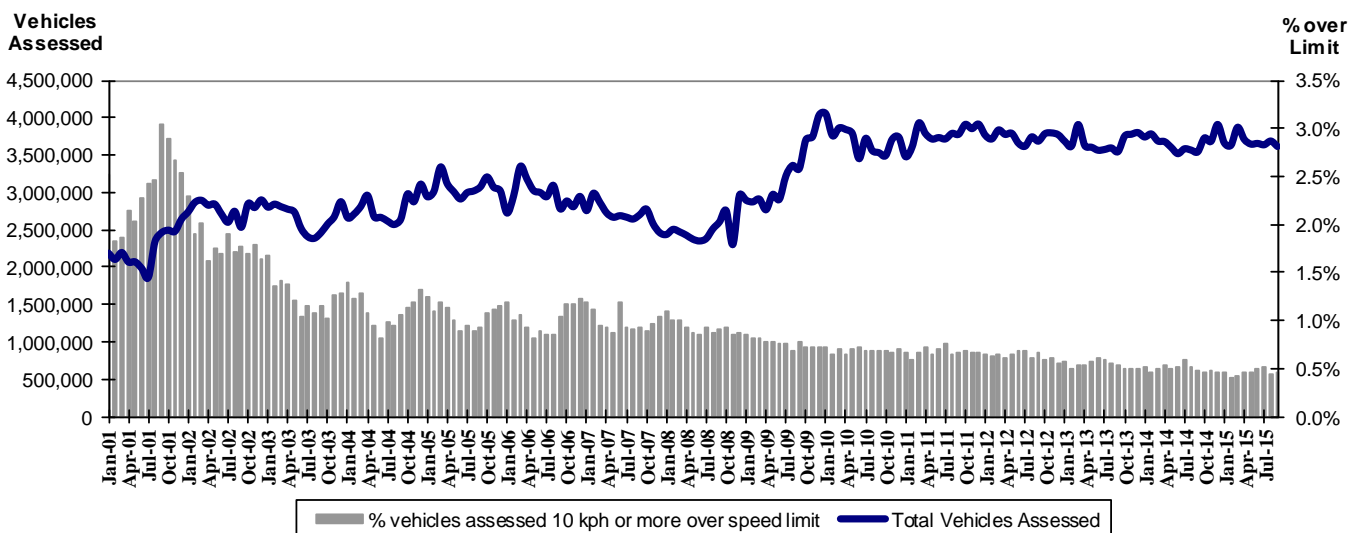
2014			2015								
Oct	Nov	Dec	Jan	Feb	Mar	Apr	May	Jun	Jul	Aug	Sep
35,422	32,416	28,732	37,982	31,250	31,144	33,790	30,434	33,386	36,437	31,001	29,975

Excessive Speed Infringements (ESI) Issued from Mobile Cameras (monthly totals)

Monthly Average = 303

2014			2015								
Oct	Nov	Dec	Jan	Feb	Mar	Apr	May	Jun	Jul	Aug	Sep
334	287	258	311	270	303	335	258	342	338	312	283

Notes: An ESI is defined as 25km/h over the speed limit except in a 110km/h zone where it is 20km/h over the limit.



Mobile Safety Cameras – Vehicles assessed and percentage of vehicles assessed 10km/h or more over speed limit per month

Explanations and References

Hi-Alc time is those times of the day and week (*shaded* in the table below) when casualty crashes are ten times more likely to involve alcohol than casualty crashes at other (Lo-Alc time) times.

	12am - 6am	6am - 8am	8am - 10am	10am - 2pm	2pm - 4pm	4pm - 6pm	6pm - 12pm
Monday							
Tuesday							
Wednesday							
Thursday							
Friday							
Saturday							
Sunday							

Police Service Areas align with Local Government Areas. Most Police Service Areas are equivalent to a single Local Government Area, while the remainder comprise two or three Local Government Areas.

Police Service Area	Local Government Area(s)	Police Service Area	Local Government Area(s)
BALLARAT	BALLARAT, PYRENEES	MAROONDAH	MAROONDAH
BANYULE	BANYULE	MELBOURNE	MELBOURNE
BASS COAST	BASS COAST, SOUTH GIPPSLAND	MELTON	MELTON
BAW BAW	BAWBAW	MILDURA	MILDURA
BENALLA	BENALLA, MANSFIELD, MURRINDINDI	MITCHELL	MITCHELL, STRATHBOGIE
BENDIGO	GREATER BENDIGO	MONASH	MONASH
BOROONDARA	BOROONDARA	MOONEE VALLEY	MOONEE VALLEY
BRIMBANK	BRIMBANK	MOORABOOL	GOLDEN PLAINS, HEPBURN, MOORABOOL
CAMPASPE	CAMPASPE	MORELAND	MORELAND
CARDINIA	CARDINIA	MORNINGTON PENINSULA	MORNINGTON PENINSULA
CASEY	CASEY	NILLUMBIK	NILLUMBIK
CENTRAL GOLDFIELDS	CENTRAL GOLDFIELDS, LODDON	NORTHERN GRAMPIANS	ARARAT, NORTHERN GRAMPIANS, YARRIAMIACK
GREATER DANDENONG	GREATER DANDENONG	PORT PHILLIP	PORT PHILLIP
DAREBIN	DAREBIN	SHEPPARTON	GREATER SHEPPARTON
EAST GIPPSLAND	EAST GIPPSLAND	SOUTHERN GRAMPIANS	GLENELG, SOUTHERN GRAMPIANS
FRANKSTON	FRANKSTON	STONNINGTON	STONNINGTON
GEELONG	GREATER GEELONG, QUEENSCLIFF	SURFCOAST	SURFCOAST, COLAC OTWAY
GLENEIRA	GLENEIRA, BAYSIDE	SWANHILL	BULOKE, GANNAWARRA, SWAN HILL
HOBSONS BAY	HOBSONSBAY	WANGARATTA	ALPINE, MOIRA, WANGARATTA
HORSHAM	HINDMARSH, HORSHAM, WESTWIMMERA	WARRNAMBOOL	CORANGAMITE, MOYNE, WARRNAMBOOL
HUME	HUME	WELLINGTON	WELLINGTON
KINGSTON	KINGSTON	WHITEHORSE	WHITEHORSE
KNOX	KNOX	WHITTLESEA	WHITTLESEA
LATROBE	LATROBE	WODONGA	INDIGO, TOWONG, WODONGA
MACEDON RANGES	MOUNT ALEXANDER, MACEDON RANGES	WYNDHAM	WYNDHAM
MANNINGHAM	MANNINGHAM	YARRA	YARRA
MARIBYRNONG	MARIBYRNONG	YARRA RANGES	YARRA RANGES

Useful Internet Sites

TAC Sites

- TAC Safety (Road Safety) www.tacsafety.com.au
- TAC How safe is your car www.howsafeisyourcar.com.au
- TAC Learners Log www.learnerslog.com.au
- TAC Motorcycle Safety Website www.spokes.com.au
- TAC Corporate site www.tac.vic.gov.au

Victorian Sites:

- VicRoads www.vicroads.vic.gov.au
- Victoria Police www.police.vic.gov.au
- Parliamentary Road Safety Committee www.parliament.vic.gov.au/rsc/
- ARRB Transport Research www.arrb.com.au
- RACV www.racv.com.au
- Monash University Accident Research Centre www.monash.edu.au/muarc
- Roadsafe www.roadsafe.org.au
- Cameras Save Lives www.camerassavelives.vic.gov.au

National and Interstate Sites:

- Australian Transport Safety Bureau www.atsb.gov.au
- Roads and Traffic Authority (NSW) www.rta.nsw.gov.au
- Queensland Transport - Road Safety transport.qld.gov.au/Home/Safety/Road
- Department of Transport (SA) www.transport.sa.gov.au/index.htm
- Main Roads Western Australia - Road Safety www.mrwa.wa.gov.au

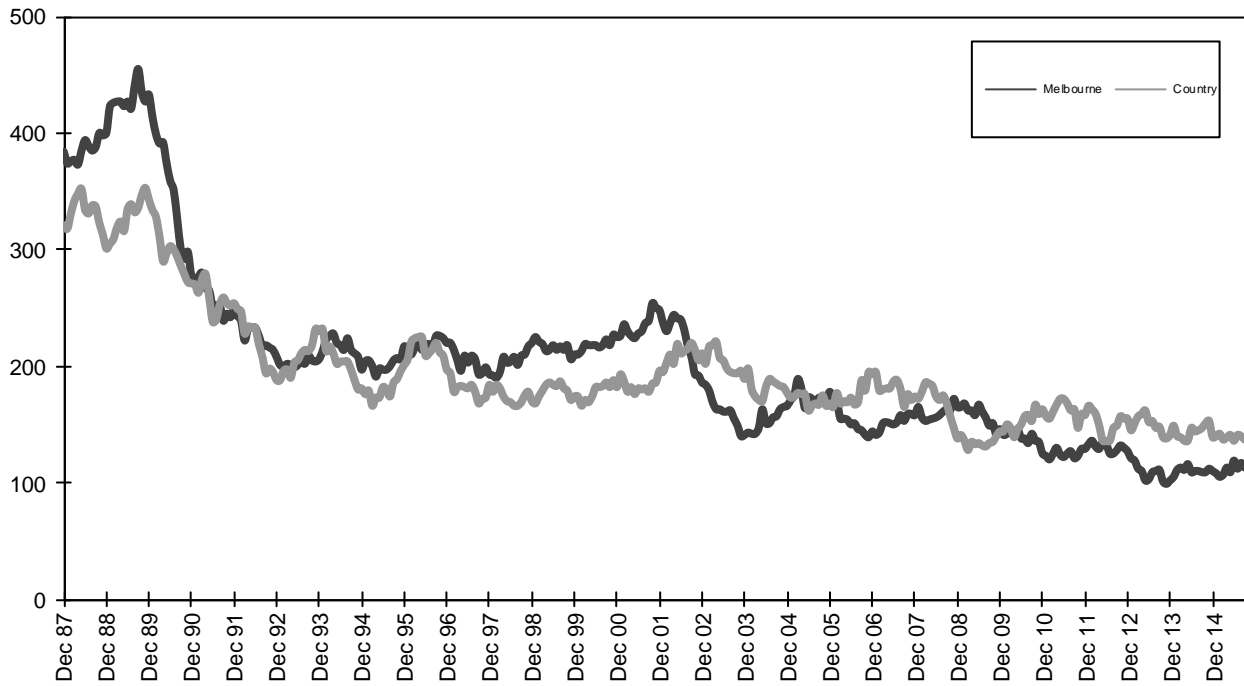
International Sites:

- National Highway Traffic Safety Admin (USA) www.nhtsa.dot.gov
- Swedish Road and Transport Institute (VTI) www.vti.se
- SWOV Institute for Road Safety Research www.swov.nl

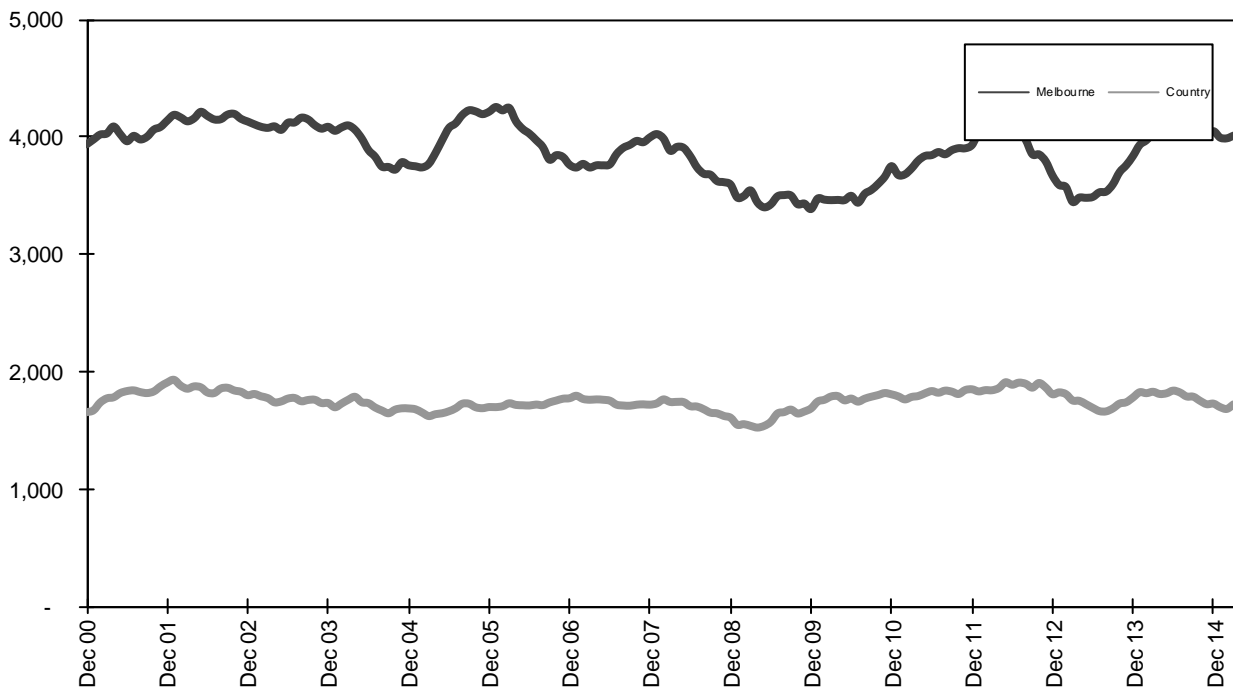
Related Sites:

- Australian Drug Foundation www.adf.org.au
- Amy Gillett Foundation www.amygillett.org.au

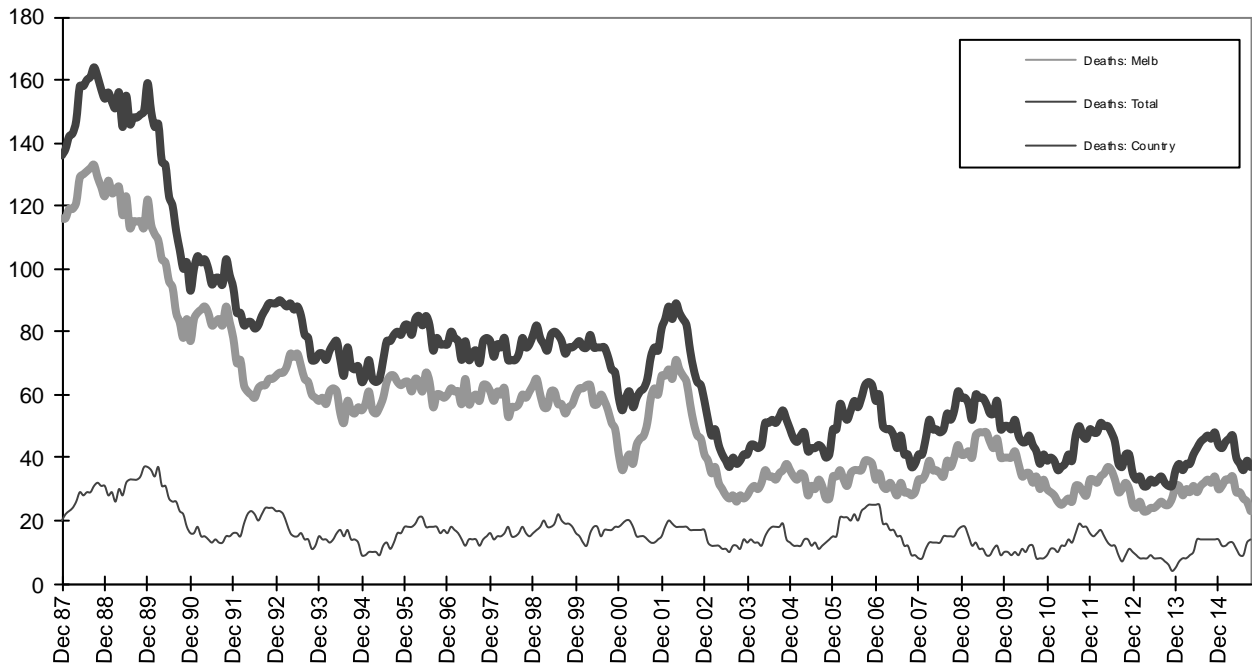
Figures



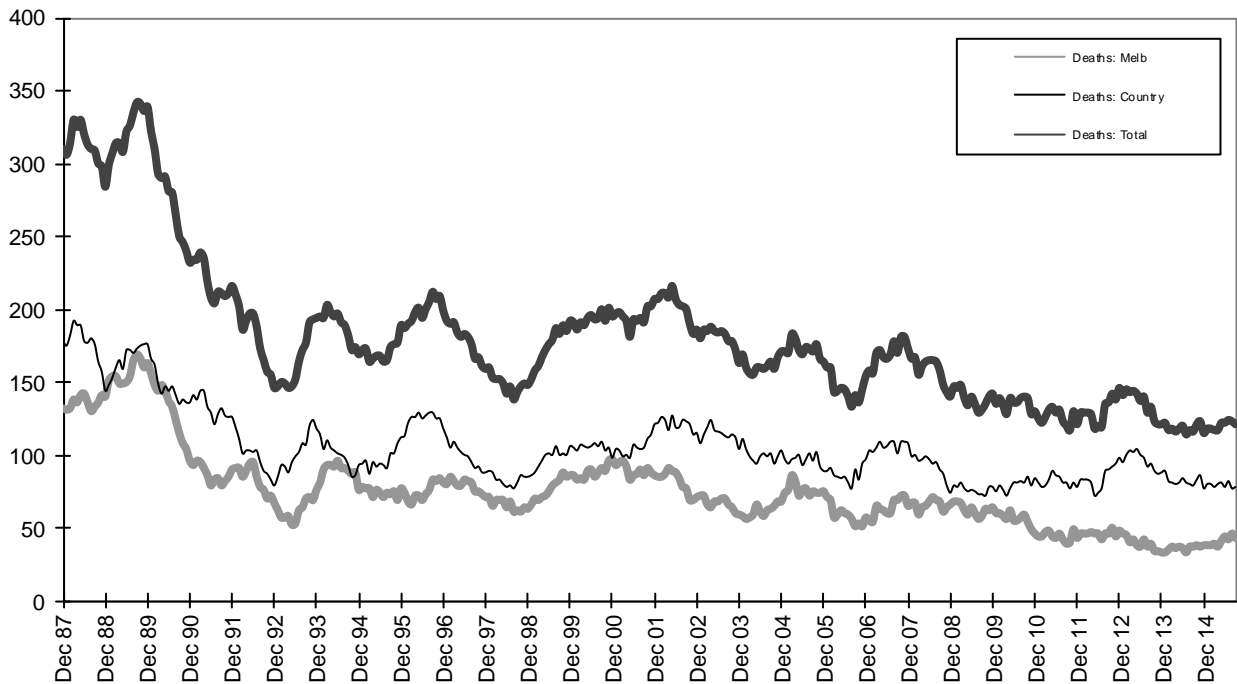
Graph 1a - Melbourne/country fatalities



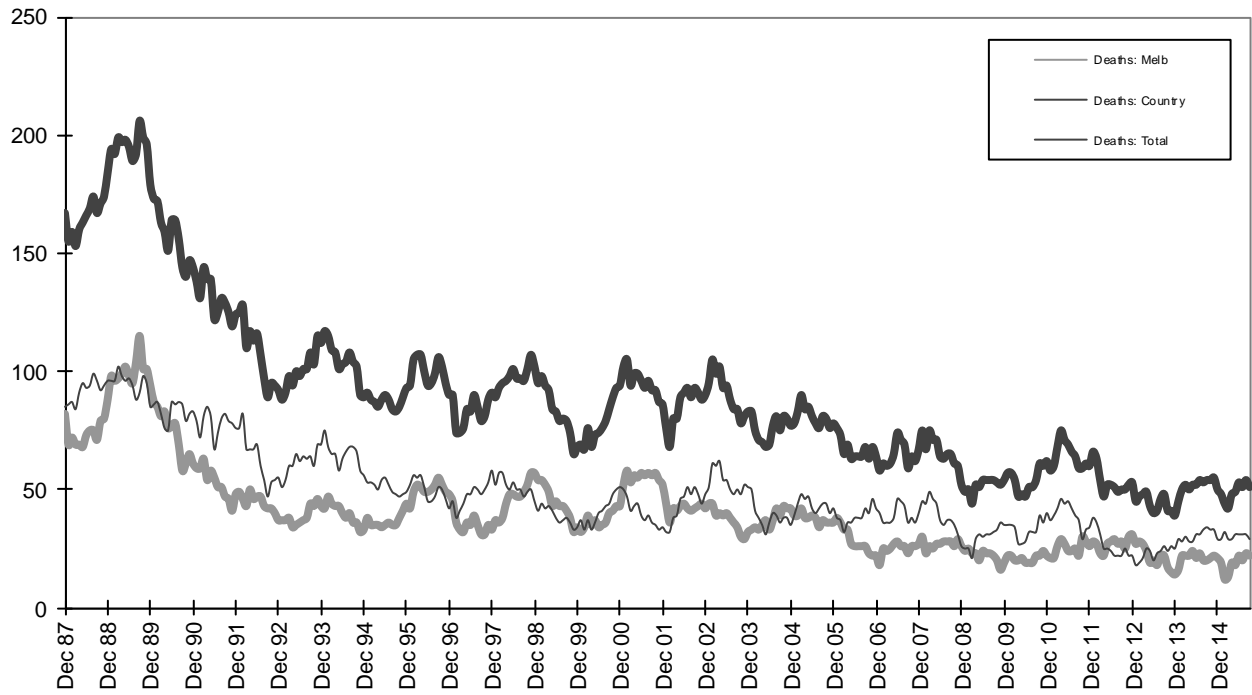
Graph 1b - Melbourne/country Claims involving an acute hospital admission



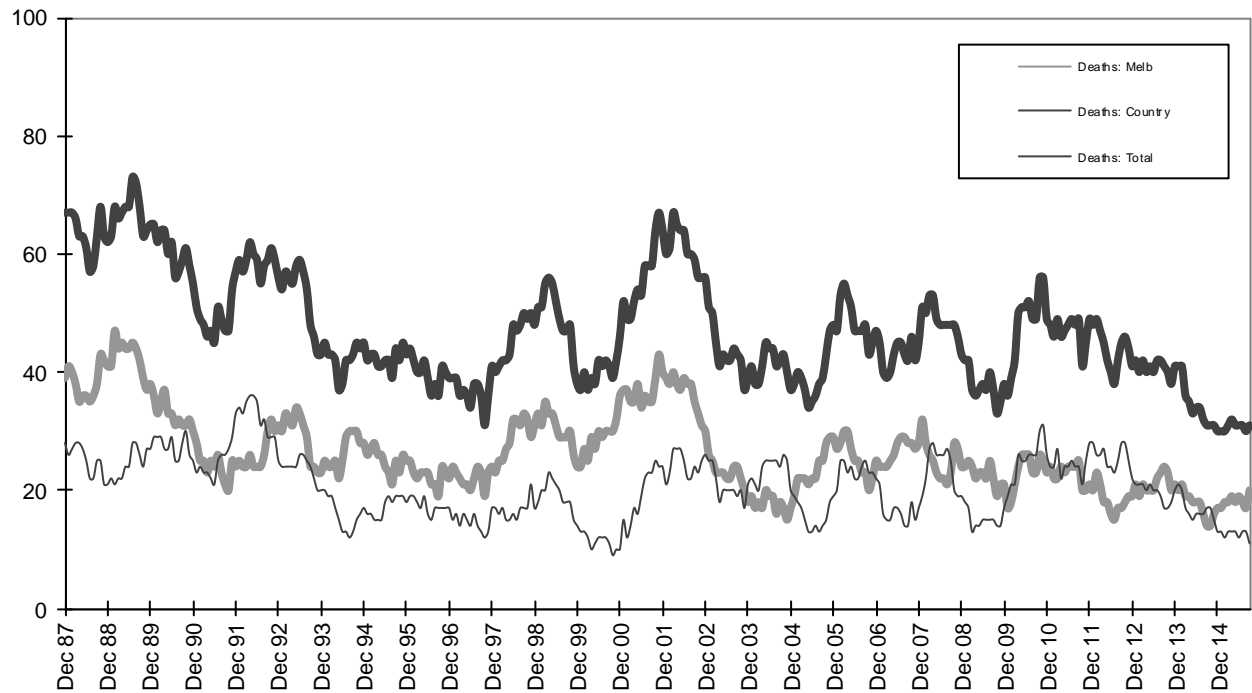
Graph 2a - Pedestrian fatalities (Melbourne/country)



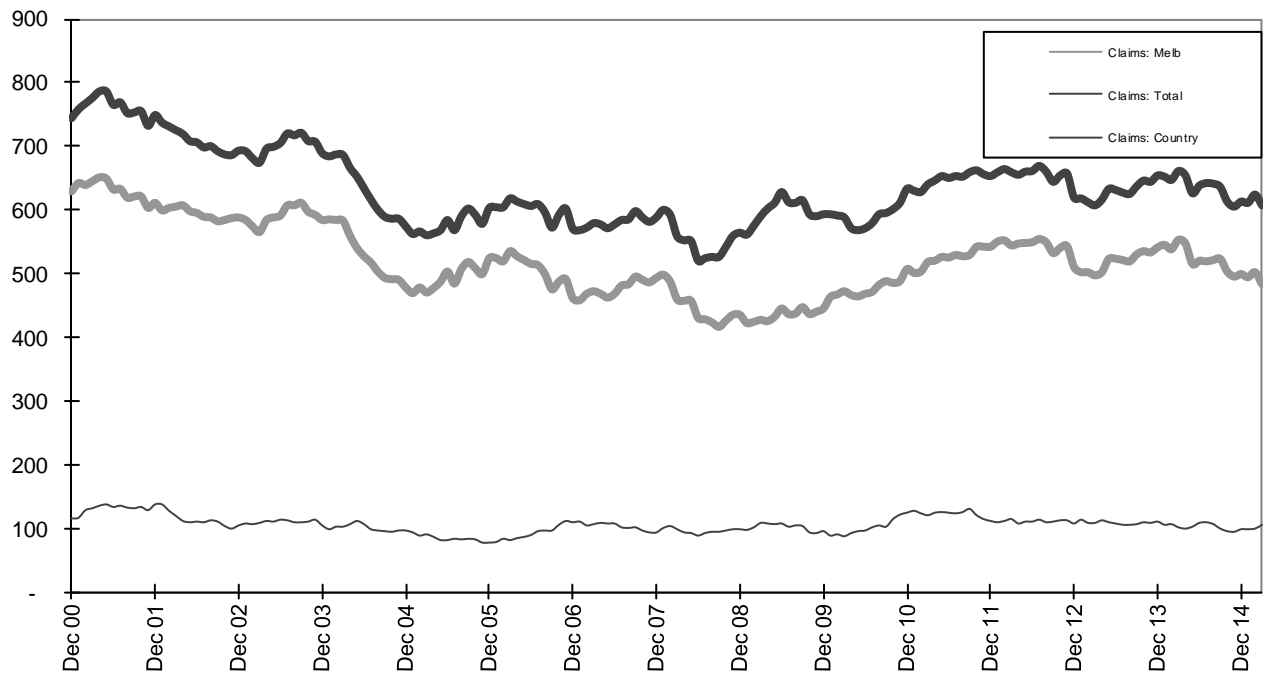
Graph 2b - Driver fatalities (Melbourne/country)



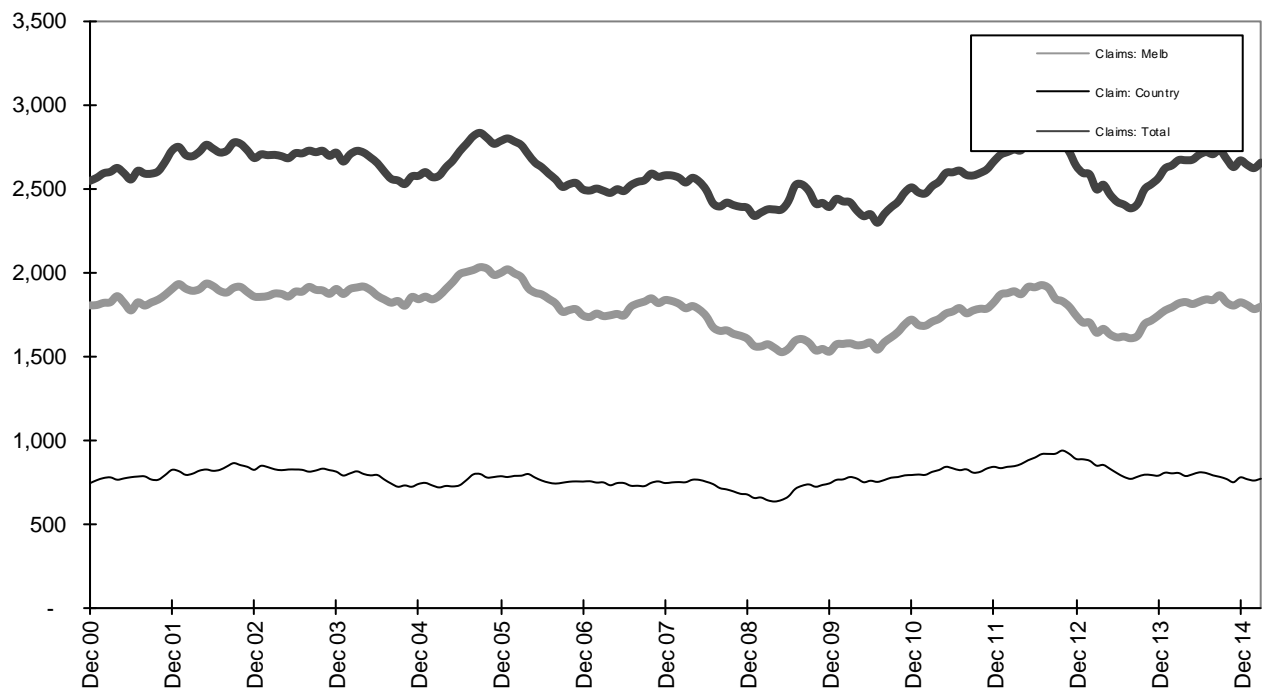
Graph 2c - Passenger fatalities (Melbourne/country)



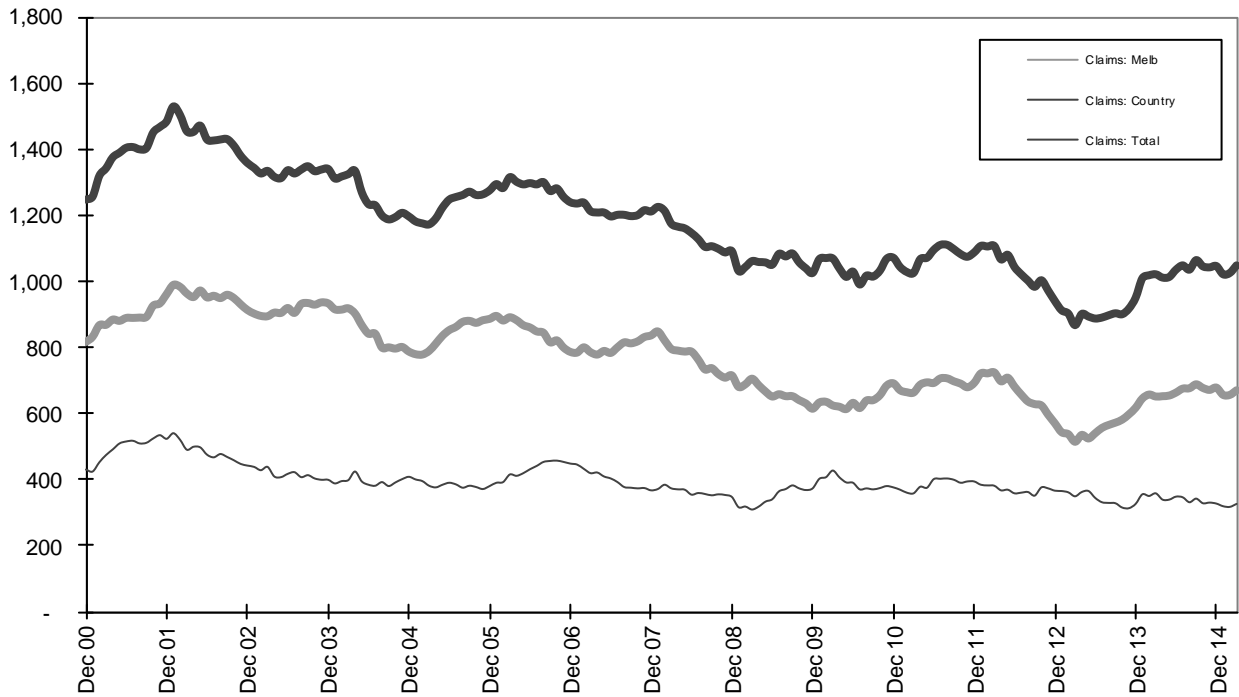
Graph 2d - Motorcyclist fatalities (Melbourne/country)



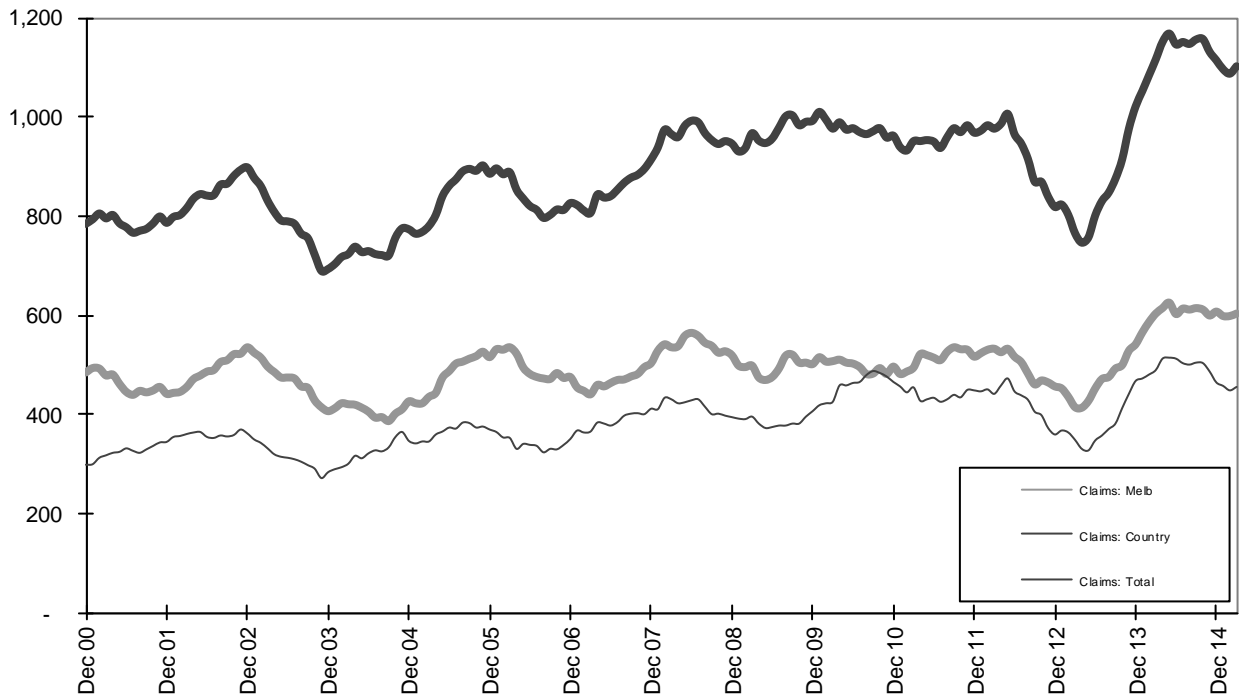
Graph 3a – Pedestrian Claims involving an acute hospital admission (Melbourne/country)



Graph 3b – Driver Claims involving an acute hospital admission (Melbourne/country)



Graph 3c - Passenger Claims involving an acute hospital admission (Melbourne/country)



Graph 3d - Motorcyclist Claims involving an acute hospital admission (Melbourne/country)