

# ROAD SAFETY STATISTICAL SUMMARY

## December 2015



TRANSPORT  
ACCIDENT  
COMMISSION

60 Brougham Street  
Geelong Vic 3220  
PO Box 742  
Geelong Vic 3220  
Ausdoc DX 216079 Geelong

Telephone 1300 654 329  
STD Toll Free 1800 332 556  
Fax: 03 9656 9300  
www.tac.vic.gov.au  
ABN 22 033 947 623



## Contents

Status Report.....	4
Fatalities.....	4
Claims involving an acute hospital admission* .....	5
Fatalities: 12 months to December 2015 .....	6
Claims involving acute hospitalisation over 14 days: 12 months to June 2015 (claim acceptance date).....	8
Claims involving an acute hospital admission: 12 months to June 2015 (claim acceptance date).....	10
Fatalities: Victorian monthly totals since 1951 .....	12
Fatalities by Week (2009 to 2015).....	13
The National Picture .....	14
Booze-Bus Random Breath Testing .....	15
Mobile Safety Camera Data .....	15
Explanations and References .....	16
Useful Internet Sites .....	17
Figures .....	18

### Note about the data in this report

- All data provided in this report is the data most recently available at time of production. Fatalities, breath-test data and safety camera data are updated to the end of report month. A 6-month lag applies to TAC claims data.
- Reported data will have one extra day of exposure for leap years.
- Data is subject to revision as additional information about known accidents/claims is received, and as new accident/claim reports are received and processed.

\*An acute hospital admission refers to a hospital admission that occurred within 7 days of accident.

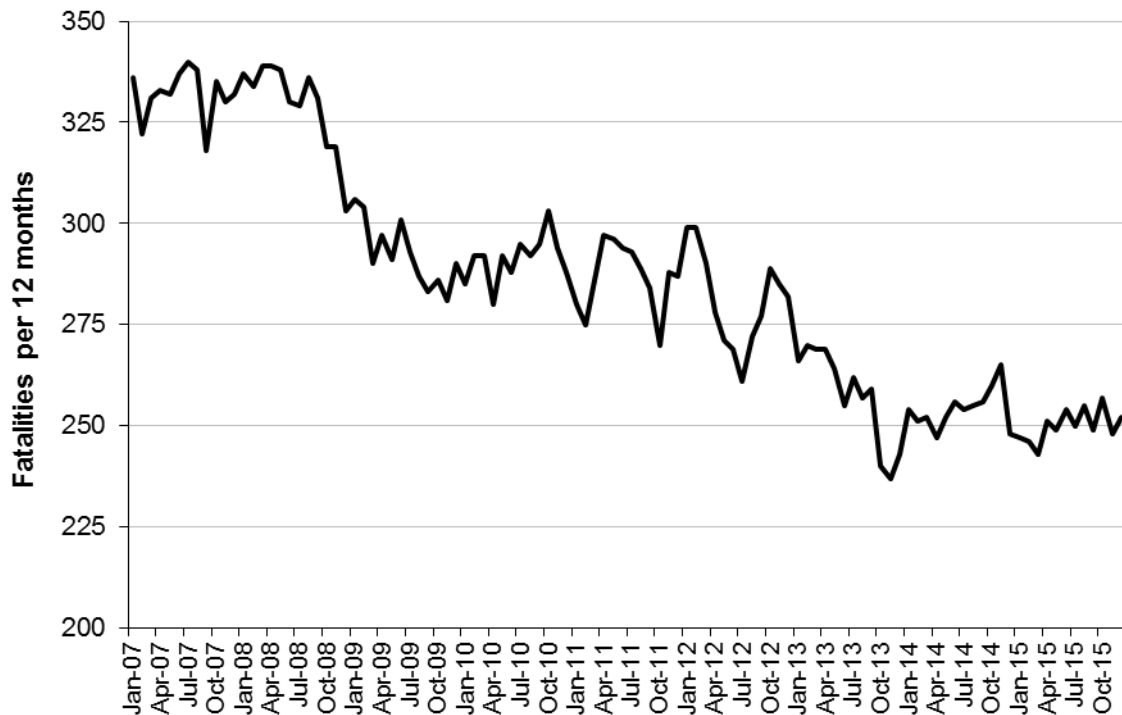
## Status Report

### Fatalities

- The rolling 12 month number of road fatalities in December 2015 stands at 252. The number of fatalities in 2014 stood at 248 (2% increase).
- 19 people were fatally injured in December 2015 on Victorian roads. This compares to 14 in December 2014.

### Fatalities (rolling 12 month, to end December 2015)

Category	2015	2014	2013	2015 v 2014		2015 v 2013		5 Year Av
<b>Fatal Injuries (Rolling 12 Month Total)</b>								
Fatal (to December)	252	248	243	+4	(+2%)	+9	(+4%)	262
per 10,000 veh	0.55	0.55	0.55	0.00	(+0%)	0.00	(+0%)	0.62
per 100,000 pop	4.24	4.25	4.24	-0.01	(-0%)	0.00	(+0%)	4.77
<b>Accidents (Rolling 12 Month Total)</b>								
Fatal (to December)	231	224	219	7	(+3%)	+12	(+5%)	240
per 10,000 veh	0.50	0.50	0.51	0.00	(+0%)	-0.01	(-2%)	0.56
per 100,000 pop	3.89	3.83	3.90	0.06	(+2%)	-0.01	(-0%)	4.28

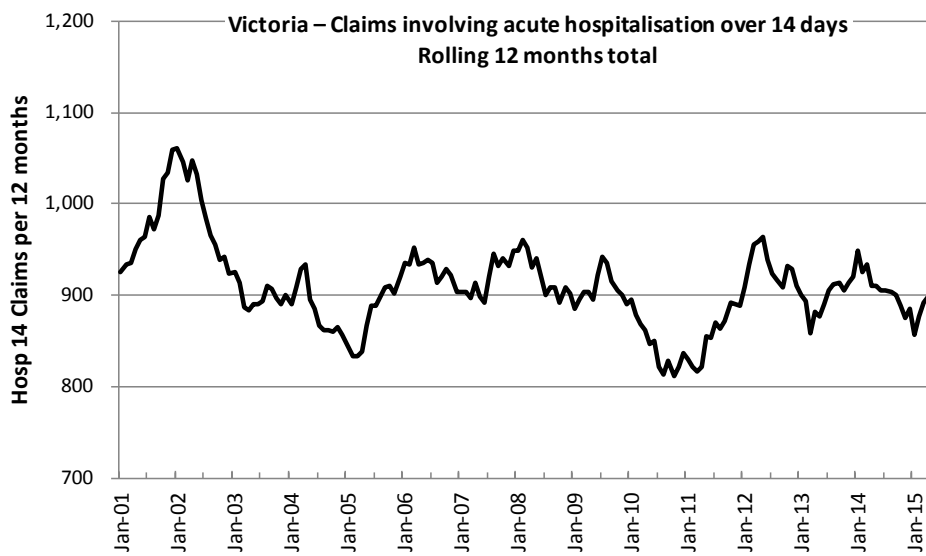


Victoria - Fatalities, rolling 12 months total

**Claims involving an acute hospital admission\***

(by claim acceptance date – rolling 12 month, to midnight 31 June 2015)

Category	2015	2014	2013	2015 v 2014		2015 v 2013		5 Year Av
<b>Claims involving an acute hospitalisation over 14 days (Rolling 12 Month Total)</b>								
Claims (to June)	900	906	891	-6	(-1%)	+9	(+1%)	889
per 100,000 pop	15.3	15.6	15.7	-0.3	(-2%)	-0.4	(-3%)	15.8
per 10,000 veh	2.0	2.0	2.0	0.0	(+0%)	0.0	(+0%)	2.1
<b>All claims involving an acute hospitalisation (Rolling 12 Month Total)</b>								
Claims (to June)	6,001	6,028	5,205	-27	(-0%)	+796	(+15%)	5,698
per 100,000 pop	101.9	104.1	91.6	-2.2	(-2%)	+10.3	(+11%)	101.0
per 10,000 veh	13.1	13.5	11.9	-0.4	(-3%)	+1.2	(+10%)	13.2



\*An acute hospital admission refers to a hospital admission that occurred within 7 days of accident.

## Fatalities: 12 months to December 2015

Category	2015	2014	2013	2015 v 2014		2015 v 2013		5 Year Av
<b>Overview</b>								
Fatalities	252	248	243	+4	(+2%)	+9	(+4%)	262
Accidents	231	224	219	+7	(+3%)	+12	(+5%)	240
<b>Sex</b>								
Female	66	85	80	-19	(-22%)	-14	(-18%)	75
Male	181	169	186	+12	(+7%)	-5	(-3%)	194
<b>Roaduser</b>								
Bicyclist	9	8	5	+1	(+13%)	+4	(+80%)	8
Driver	117	122	141	-5	(-4%)	-24	(-17%)	127
Motorcyclist	30	41	42	-11	(-27%)	-12	(-29%)	42
Passenger	48	45	45	+3	(+7%)	+3	(+7%)	52
Pedestrian	43	38	33	+5	(+13%)	+10	(+30%)	40
<b>Location</b>								
Melbourne	108	105	121	+3	(+3%)	-13	(-11%)	118
Rural Victoria	139	149	145	-10	(-7%)	-6	(-4%)	151
<b>Agegroup</b>								
0-4	4	0	3	+4	(+400%)	+1	(+33%)	4
5-15	8	7	7	+1	(+14%)	+1	(+14%)	7
16-17	5	3	3	+2	(+67%)	+2	(+67%)	5
18-20	15	16	26	-1	(-6%)	-11	(-42%)	25
21-25	33	24	34	+9	(+38%)	-1	(-3%)	33
26-29	19	18	17	+1	(+6%)	+2	(+12%)	20
30-39	38	33	39	+5	(+15%)	-1	(-3%)	36
40-49	25	31	28	-6	(-19%)	-3	(-11%)	32
50-59	27	34	35	-7	(-21%)	-8	(-23%)	32
60-69	31	30	27	+1	(+3%)	+4	(+15%)	29
70+	42	57	46	-15	(-26%)	-4	(-9%)	47
<b>Altime</b>								
High (Melb)	54	61	59	-7	(-11%)	-5	(-8%)	62
High (Rural)	57	53	69	+4	(+8%)	-12	(-17%)	69
High (Vic)	111	114	128	-3	(-3%)	-17	(-13%)	131
Low (Melb)	54	44	62	+10	(+23%)	-8	(-13%)	56
Low (Rural)	82	96	76	-14	(-15%)	+6	(+8%)	82
Low (Vic)	136	140	138	-4	(-3%)	-2	(-1%)	138
<b>Accident Type</b>								
<b>Intersection</b>								
Adjacent direction	35	35	26	0	(0%)	+9	(+35%)	31
Opposing direction	7	4	4	+3	(+75%)	+3	(+75%)	5
<b>Mid-block/other</b>								
Head on	36	43	42	-7	(-16%)	-6	(-14%)	39
Same direction	10	17	13	-7	(-41%)	-3	(-23%)	15
Manoeuvre/o'taking	14	7	20	+7	(+100%)	-6	(-30%)	14
On path	9	1	6	+8	(+800%)	+3	(+50%)	6
Single vehicle	88	102	115	-14	(-14%)	-27	(-23%)	110
Other (incl peds)	48	45	40	+3	(+7%)	+8	(+20%)	47

## Fatalities: 12 months to December 2015 – Continued

Category	2015	2014	2013	2015 v 2014		2015 v 2013		5 Year Av
<b>Police Service Area (based on Local Government Area (see p.13))</b>								
BALLARAT	4	7	2	-3	(-43%)	+2	(+100%)	6
BANYULE	0	3	1	-3	(-100%)	-1	(-100%)	2
BASS COAST	8	8	5	0	(0%)	+3	(+60%)	7
BAW BAW	4	6	6	-2	(-33%)	-2	(-33%)	7
BENALLA	8	11	9	-3	(-27%)	-1	(-11%)	9
BENDIGO	6	5	11	+1	(+20%)	-5	(-45%)	7
BOROONDARA	3	5	2	-2	(-40%)	+1	(+50%)	3
BRIMBANK	6	5	8	+1	(+20%)	-2	(-25%)	6
CAMPASPE	8	3	9	+5	(+167%)	-1	(-11%)	5
CARDINIA	8	1	5	+7	(+700%)	+3	(+60%)	6
CASEY	4	7	6	-3	(-43%)	-2	(-33%)	7
CENTRAL GOLDFIELDS	2	4	2	-2	(-50%)	0	(0%)	3
DAREBIN	1	2	5	-1	(-50%)	-4	(-80%)	3
EAST GIPPSLAND	6	2	7	+4	(+200%)	-1	(-14%)	6
FRANKSTON	5	1	3	+4	(+400%)	+2	(+67%)	4
GEELONG	7	5	15	+2	(+40%)	-8	(-53%)	10
GLEN EIRA	5	6	5	-1	(-17%)	0	(0%)	5
GREATER DANDENONG	5	4	5	+1	(+25%)	0	(0%)	4
HOBSONS BAY	0	3	0	-3	(-100%)	0	(0%)	1
HORSHAM	2	4	3	-2	(-50%)	-1	(-33%)	4
HUME	5	5	11	0	(0%)	-6	(-55%)	6
KINGSTON	4	6	8	-2	(-33%)	-4	(-50%)	5
KNOX	5	4	1	+1	(+25%)	+4	(+400%)	3
LA TROBE	5	6	7	-1	(-17%)	-2	(-29%)	6
MACEDON RANGES	10	5	6	+5	(+100%)	+4	(+67%)	6
MANNINGHAM	1	0	4	+1	(+100%)	-3	(-75%)	2
MARIBYRNONG	0	4	3	-4	(-100%)	-3	(-100%)	2
MAROONDAH	2	0	4	+2	(+200%)	-2	(-50%)	2
MELBOURNE	5	2	3	+3	(+150%)	+2	(+67%)	4
MELTON	5	8	5	-3	(-38%)	0	(0%)	6
MILDURA	1	7	1	-6	(-86%)	0	(0%)	3
MITCHELL	6	9	10	-3	(-33%)	-4	(-40%)	8
MONASH	1	4	5	-3	(-75%)	-4	(-80%)	3
MOONEE VALLEY	4	3	1	+1	(+33%)	+3	(+300%)	2
MOORABOOL	5	9	9	-4	(-44%)	-4	(-44%)	9
MORELAND	6	2	3	+4	(+200%)	+3	(+100%)	4
MORNINGTON PENINSULA	10	3	6	+7	(+233%)	+4	(+67%)	7
NILLUMBIK	1	0	2	+1	(+100%)	-1	(-50%)	1
NORTHERN GRAMPPIANS	3	7	6	-4	(-57%)	-3	(-50%)	5
PORT PHILLIP	1	4	1	-3	(-75%)	0	(0%)	2
SHEPPARTON	3	5	11	-2	(-40%)	-8	(-73%)	6
SOUTHERN GRAMPPIANS	6	0	5	+6	(+600%)	+1	(+20%)	4
STONNINGTON	3	4	1	-1	(-25%)	+2	(+200%)	2
SURF COAST	6	3	3	+3	(+100%)	+3	(+100%)	7
SWAN HILL	4	9	6	-5	(-56%)	-2	(-33%)	6
WANGARATTA	10	9	6	+1	(+11%)	+4	(+67%)	10
WARRNAMBOOL	13	13	1	0	(0%)	+12	(+1200%)	8
WELLINGTON	5	6	2	-1	(-17%)	+3	(+150%)	5
WHITEHORSE	3	2	2	+1	(+50%)	+1	(+50%)	4
WHITTLESEA	6	3	6	+3	(+100%)	0	(0%)	6
WODONGA	7	6	2	+1	(+17%)	+5	(+250%)	5
WYNDHAM	5	3	10	+2	(+67%)	-5	(-50%)	6
YARRA	1	1	1	0	(0%)	0	(0%)	2
YARRA RANGES	3	10	5	-7	(-70%)	-2	(-40%)	7

## Claims involving acute hospitalisation over 14 days: 12 months to June 2015 (claim acceptance date)

Category	2015	2014	2013	2015 v 2014		2015 v 2013		5 Year Av
<b>Overview</b>								
Claims	900	906	891	-6	(-1%)	+9	(+1%)	889
<b>Sex</b>								
Female	388	364	374	+24	(+7%)	+14	(+4%)	372
Male	513	541	531	-28	(-5%)	-18	(-3%)	529
<b>Roaduser</b>								
Driver	338	371	380	-33	(-9%)	-42	(-11%)	356
Passenger	144	140	143	+4	(+3%)	+1	(+1%)	144
Motorcyclist	179	158	141	+21	(+13%)	+38	(+27%)	161
Pedestrian	182	179	194	+3	(+2%)	-12	(-6%)	184
Cyclist	35	37	30	-2	(-5%)	+5	(+17%)	36
Train/Tram	12	6	5	+6	(+100%)	+7	(+140%)	8
<b>Location</b>								
Melbourne	587	555	583	+32	(+6%)	+4	(+1%)	581
Rural Victoria	291	331	322	-40	(-12%)	-31	(-10%)	310
<b>Agegroup</b>								
0-4	4	1	2	+3	(+300%)	+2	(+100%)	3
5-15	20	12	8	+8	(+67%)	+12	(+150%)	14
16-17	13	12	17	+1	(+8%)	-4	(-24%)	17
18-20	44	57	63	-13	(-23%)	-19	(-30%)	54
21-25	81	83	82	-2	(-2%)	-1	(-1%)	83
26-29	55	47	39	+8	(+17%)	+16	(+41%)	52
30-39	93	112	112	-19	(-17%)	-19	(-17%)	108
40-49	115	121	116	-6	(-5%)	-1	(-1%)	117
50-59	110	111	97	-1	(-1%)	+13	(+13%)	104
60-69	109	95	116	+14	(+15%)	-7	(-6%)	107
70+	258	255	254	+3	(+1%)	+4	(+2%)	242
<b>Alctime</b>								
High (Melb)	220	218	259	+2	(+1%)	-39	(-15%)	245
High (Rural)	118	134	117	-16	(-12%)	+1	(+1%)	124
High (Vic)	338	352	376	-14	(-4%)	-38	(-10%)	369
Low (Melb)	367	337	324	+30	(+9%)	+43	(+13%)	335
Low (Rural)	173	197	205	-24	(-12%)	-32	(-16%)	186
Low (Vic)	540	534	529	+6	(+1%)	+11	(+2%)	522
<b>Accident Type</b>								
<b>Intersection</b>								
Adjacent direction	101	102	136	-1	(-1%)	-35	(-26%)	115
Opposing direction	54	67	54	-13	(-19%)	0	(0%)	62
<b>Mid-block/other</b>								
Head on	87	91	81	-4	(-4%)	+6	(+7%)	84
Same direction	89	68	79	+21	(+31%)	+10	(+13%)	84
Manoeuvre/o'taking	53	59	63	-6	(-10%)	-10	(-16%)	56
On path	31	25	22	+6	(+24%)	+9	(+41%)	24
Single vehicle	260	270	230	-10	(-4%)	+30	(+13%)	252
Other (incl peds)	227	224	241	+3	(+1%)	-14	(-6%)	226

Note: Excludes rejected claims and claims for interstate crashes.



**Claims involving acute hospitalisation over 14 days: 12 months to June 2015 (claim acceptance date) – Continued**

Category	2015	2014	2013	2015 v 2013		2015 v 2014		5 Year Av
<b>Police Service Area (based on Local Government Area (see p.13))</b>								
BALLARAT	15	23	16	-8	(-35%)	-1	(-6%)	16
BANYULE	8	9	11	-1	(-11%)	-3	(-27%)	10
BASS COAST	21	21	13	0	(0%)	+8	(+62%)	17
BAW BAW	9	7	9	+2	(+29%)	0	(0%)	10
BENALLA	21	21	17	0	(0%)	+4	(+24%)	20
BENDIGO	11	14	15	-3	(-21%)	-4	(-27%)	15
BOROONDARA	23	23	18	0	(0%)	+5	(+28%)	24
BRIMBANK	31	18	22	+13	(+72%)	+9	(+41%)	24
CAMPASPE	10	7	7	+3	(+43%)	+3	(+43%)	7
CARDINIA	12	13	13	-1	(-8%)	-1	(-8%)	14
CASEY	34	29	26	+5	(+17%)	+8	(+31%)	28
CENTRAL GOLDFIELDS	2	7	8	-5	(-71%)	-6	(-75%)	6
DAREBIN	16	13	23	+3	(+23%)	-7	(-30%)	16
EAST GIPPSLAND	10	8	8	+2	(+25%)	+2	(+25%)	11
FRANKSTON	17	11	13	+6	(+55%)	+4	(+31%)	15
GEELONG	27	24	38	+3	(+13%)	-11	(-29%)	29
GLEN EIRA	22	28	31	-6	(-21%)	-9	(-29%)	29
GREATER DANDENONG	14	32	27	-18	(-56%)	-13	(-48%)	26
HOBSONS BAY	11	9	12	+2	(+22%)	-1	(-8%)	11
HORSHAM	4	7	5	-3	(-43%)	-1	(-20%)	7
HUME	35	14	32	+21	(+150%)	+3	(+9%)	26
KINGSTON	23	22	24	+1	(+5%)	-1	(-4%)	21
KNOX	13	21	15	-8	(-38%)	-2	(-13%)	17
LA TROBE	13	9	16	+4	(+44%)	-3	(-19%)	14
MACEDON RANGES	11	26	20	-15	(-58%)	-9	(-45%)	17
MANNINGHAM	12	14	13	-2	(-14%)	-1	(-8%)	14
MARIBYRNONG	12	5	15	+7	(+140%)	-3	(-20%)	12
MAROONDAH	5	5	7	0	(0%)	-2	(-29%)	8
MELBOURNE	33	28	32	+5	(+18%)	+1	(+3%)	31
MELTON	16	10	17	+6	(+60%)	-1	(-6%)	14
MILDURA	6	8	7	-2	(-25%)	-1	(-14%)	8
MITCHELL	12	24	20	-12	(-50%)	-8	(-40%)	18
MONASH	21	25	19	-4	(-16%)	+2	(+11%)	22
MOONEE VALLEY	21	22	17	-1	(-5%)	+4	(+24%)	19
MOORABOOL	21	16	17	+5	(+31%)	+4	(+24%)	15
MORELAND	29	26	34	+3	(+12%)	-5	(-15%)	27
MORNINGTON PENINSULA	24	21	31	+3	(+14%)	-7	(-23%)	29
NILLUMBIK	9	6	9	+3	(+50%)	0	(0%)	7
NORTHERN GRAMPPIANS	11	14	12	-3	(-21%)	-1	(-8%)	9
PORT PHILLIP	18	19	9	-1	(-5%)	+9	(+100%)	14
SHEPPARTON	9	11	18	-2	(-18%)	-9	(-50%)	11
SOUTHERN GRAMPPIANS	11	10	8	+1	(+10%)	+3	(+38%)	9
STONNINGTON	13	17	10	-4	(-24%)	+3	(+30%)	16
SURF COAST	13	14	11	-1	(-7%)	+2	(+18%)	13
SWAN HILL	14	7	7	+7	(+100%)	+7	(+100%)	8
WANGARATTA	17	14	17	+3	(+21%)	0	(0%)	16
WARRNAMBOOL	9	15	15	-6	(-40%)	-6	(-40%)	14
WELLINGTON	5	11	9	-6	(-55%)	-4	(-44%)	9
WHITEHORSE	19	21	12	-2	(-10%)	+7	(+58%)	19
WHITTLESEA	27	21	24	+6	(+29%)	+3	(+13%)	22
WODONGA	9	13	9	-4	(-31%)	0	(0%)	10
WYNDHAM	21	29	20	-8	(-28%)	+1	(+5%)	22
YARRA	13	14	15	-1	(-7%)	-2	(-13%)	13
YARRA RANGES	35	30	32	+5	(+17%)	+3	(+9%)	31

**Note: excludes rejected claims and claims for interstate crashes**

## Claims involving an acute hospital admission: 12 months to June 2015 (claim acceptance date)

Category	2015	2014	2013	2015 v 2014	2015 v 2013	5 Year Av
<b>Overview</b>						
Claims	6,001	6,028	5,205	-27 (-0%)	+796 (+15%)	5,698
<b>Sex</b>						
Female	2,574	2,535	2,152	+39 (+2%)	+422 (+20%)	2,457
Male	3,411	3,525	3,064	-114 (-3%)	+347 (+11%)	3,334
<b>Roaduser</b>						
Driver	2,726	2,716	2,401	+10 (+0%)	+325 (+14%)	2,657
Passenger	1,010	1,049	890	-39 (-4%)	+120 (+13%)	1,016
Motorcyclist	1,093	1,151	832	-58 (-5%)	+261 (+31%)	992
Pedestrian	613	641	629	-28 (-4%)	-16 (-3%)	641
Cyclist	400	390	352	+10 (+3%)	+48 (+14%)	369
Train/Tram	30	32	27	-2 (-6%)	+3 (+11%)	28
<b>Location</b>						
Melbourne	4,014	4,068	3,527	-54 (-1%)	+487 (+14%)	3,907
Rural Victoria	1,744	1,823	1,664	-79 (-4%)	+80 (+5%)	1,791
<b>Agegroup</b>						
0-4	46	54	45	-8 (-15%)	+1 (+2%)	50
5-15	230	176	176	+54 (+31%)	+54 (+31%)	195
16-17	103	95	93	+8 (+8%)	+10 (+11%)	111
18-20	460	529	469	-69 (-13%)	-9 (-2%)	516
21-25	707	793	635	-86 (-11%)	+72 (+11%)	721
26-29	488	474	373	+14 (+3%)	+115 (+31%)	443
30-39	920	907	783	+13 (+1%)	+137 (+17%)	885
40-49	894	915	786	-21 (-2%)	+108 (+14%)	868
50-59	786	761	633	+25 (+3%)	+153 (+24%)	730
60-69	546	538	475	+8 (+1%)	+71 (+15%)	521
70+	812	825	750	-13 (-2%)	+62 (+8%)	755
<b>Alcetime</b>						
High (Melb)	1,668	1,706	1,539	-38 (-2%)	+129 (+8%)	1,717
High (Rural)	727	726	677	+1 (+0%)	+50 (+7%)	748
High (Vic)	2,395	2,432	2,216	-37 (-2%)	+179 (+8%)	2,466
Low (Melb)	2,346	2,362	1,988	-16 (-1%)	+358 (+18%)	2,189
Low (Rural)	1,017	1,097	987	-80 (-7%)	+30 (+3%)	1,043
Low (Vic)	3,363	3,459	2,975	-96 (-3%)	+388 (+13%)	3,232
<b>Accident Type</b>						
<b>Intersection</b>						
Adjacent direction	741	820	765	-79 (-10%)	-24 (-3%)	821
Opposing direction	495	542	458	-47 (-9%)	+37 (+8%)	493
<b>Mid-block/other</b>						
Head on	302	346	281	-44 (-13%)	+21 (+7%)	323
Same direction	917	855	764	+62 (+7%)	+153 (+20%)	892
Manoeuvre/o'taking	336	329	319	+7 (+2%)	+17 (+5%)	325
On path	297	283	210	+14 (+5%)	+87 (+41%)	244
Single vehicle	1,717	1,695	1,396	+22 (+1%)	+321 (+23%)	1,610
Other (incl peds)	1,187	1,197	1,025	-10 (-1%)	+162 (+16%)	1,086

Note: excludes rejected claims and claims for interstate crashes

## Claims involving an acute hospital admission: 12 months to June 2015 (claim acceptance date) – Continued

Category	2015	2014	2013	2015 v 2014		2015 v 2013		5 Year Av
<b>Police Service Area (based on Local Government Area (see p.13))</b>								
BALLARAT	83	94	99	-11	(-12%)	-16	(-16%)	96
BANYULE	51	62	53	-11	(-18%)	-2	(-4%)	59
BASS COAST	87	94	68	-7	(-7%)	+19	(+28%)	82
BAW BAW	49	67	57	-18	(-27%)	-8	(-14%)	59
BENALLA	111	110	106	+1	(+1%)	+5	(+5%)	114
BENDIGO	100	77	90	+23	(+30%)	+10	(+11%)	98
BOROONDARA	136	136	130	0	(0%)	+6	(+5%)	136
BRIMBANK	145	134	144	+11	(+8%)	+1	(+1%)	149
CAMPASPE	41	36	34	+5	(+14%)	+7	(+21%)	38
CARDINIA	110	115	83	-5	(-4%)	+27	(+33%)	100
CASEY	292	265	198	+27	(+10%)	+94	(+47%)	248
CENTRAL GOLDFIELDS	26	31	27	-5	(-16%)	-1	(-4%)	26
DAREBIN	87	100	93	-13	(-13%)	-6	(-6%)	99
EAST GIPPSLAND	68	46	67	+22	(+48%)	+1	(+1%)	65
FRANKSTON	128	117	107	+11	(+9%)	+21	(+20%)	130
GEELONG	225	230	194	-5	(-2%)	+31	(+16%)	227
GLEN EIRA	174	193	165	-19	(-10%)	+9	(+5%)	178
GREATER DANDENONG	229	284	200	-55	(-19%)	+29	(+15%)	227
HOBSONS BAY	65	66	53	-1	(-2%)	+12	(+23%)	64
HORSHAM	33	35	26	-2	(-6%)	+7	(+27%)	35
HUME	192	179	141	+13	(+7%)	+51	(+36%)	162
KINGSTON	132	153	132	-21	(-14%)	0	(0%)	135
KNOX	102	131	85	-29	(-22%)	+17	(+20%)	113
LA TROBE	52	64	66	-12	(-19%)	-14	(-21%)	65
MACEDON RANGES	91	100	94	-9	(-9%)	-3	(-3%)	88
MANNINGHAM	78	64	68	+14	(+22%)	+10	(+15%)	68
MARIBY RNONG	72	65	73	+7	(+11%)	-1	(-1%)	79
MAROONDAH	58	51	50	+7	(+14%)	+8	(+16%)	62
MELBOURNE	235	249	244	-14	(-6%)	-9	(-4%)	242
MELTON	87	68	75	+19	(+28%)	+12	(+16%)	76
MILDURA	22	48	29	-26	(-54%)	-7	(-24%)	36
MITCHELL	101	107	88	-6	(-6%)	+13	(+15%)	92
MONASH	196	216	165	-20	(-9%)	+31	(+19%)	184
MOONEE VALLEY	122	122	110	0	(0%)	+12	(+11%)	112
MOORABOOL	99	109	107	-10	(-9%)	-8	(-7%)	100
MORELAND	153	151	130	+2	(+1%)	+23	(+18%)	147
MORNINGTON PENINSUL	152	145	118	+7	(+5%)	+34	(+29%)	156
NILLUMBIK	46	22	40	+24	(+109%)	+6	(+15%)	39
NORTHERN GRAMPPIANS	52	39	46	+13	(+33%)	+6	(+13%)	40
PORT PHILLIP	151	141	106	+10	(+7%)	+45	(+42%)	125
SHEPPARTON	78	65	62	+13	(+20%)	+16	(+26%)	68
SOUTHERN GRAMPPIANS	39	50	48	-11	(-22%)	-9	(-19%)	47
STONNINGTON	140	138	134	+2	(+1%)	+6	(+4%)	132
SURF COAST	70	75	53	-5	(-7%)	+17	(+32%)	69
SWAN HILL	39	40	33	-1	(-3%)	+6	(+18%)	36
WANGARATTA	92	105	88	-13	(-12%)	+4	(+5%)	99
WARRNAMBOOL	58	75	60	-17	(-23%)	-2	(-3%)	78
WELLINGTON	77	72	55	+5	(+7%)	+22	(+40%)	74
WHITEHORSE	92	117	96	-25	(-21%)	-4	(-4%)	113
WHITTLESEA	147	147	140	0	(0%)	+7	(+5%)	140
WODONGA	51	54	67	-3	(-6%)	-16	(-24%)	62
WYNDHAM	149	176	130	-27	(-15%)	+19	(+15%)	150
YARRA	115	110	95	+5	(+5%)	+20	(+21%)	107
YARRA RANGES	178	151	169	+27	(+18%)	+9	(+5%)	176

Note: excludes rejected claims and claims for interstate crashes

**Fatalities: Victorian monthly totals since 1951**

Year	Jan	Feb	Mar	Apr	May	Jun	Jul	Aug	Sep	Oct	Nov	Dec	Totals
1951							61	59	52	38	29	41	
1952	45	40	54	61	54	69	67	55	44	44	31	20	584
1953	23	28	54	58	49	42	50	37	44	27	36	32	480
1954	44	42	28	60	55	36	63	33	25	52	30	41	509
1955	44	36	45	55	48	56	64	44	44	32	40	40	548
1956	34	48	51	67	53	65	71	47	39	39	44	48	606
1957	50	41	46	58	52	54	57	53	51	46	32	49	589
1958	50	38	42	58	54	41	54	53	57	40	57	52	596
1959	50	57	61	50	75	55	42	48	52	55	63	63	671
1960	49	53	57	76	70	70	67	62	61	77	52	66	760
1961	63	57	68	74	58	68	78	82	59	62	60	65	794
1962	65	41	76	78	72	80	70	77	62	53	64	70	808
1963	67	56	65	85	66	68	77	55	55	58	61	67	780
1964	73	71	78	71	83	89	80	89	67	66	62	75	904
1965	63	64	86	88	80	87	79	69	81	77	68	87	929
1966	75	59	75	103	74	86	87	80	75	66	90	85	955
1967	61	79	91	97	81	71	59	67	70	68	60	83	887
1968	70	78	86	78	73	76	73	77	72	80	81	105	949
1969	79	68	79	87	86	77	87	83	87	83	94	101	1,011
1970	85	84	106	80	87	88	110	106	78	95	68	74	1,061
1971	83	75	77	68	76	86	85	72	78	73	74	76	923
1972	61	62	75	82	75	71	98	85	83	62	80	81	915
1973	75	75	95	85	64	66	61	85	89	88	66	86	935
1974	56	62	81	60	70	73	67	62	53	70	80	72	806
1975	67	65	87	73	97	94	57	75	69	66	71	89	910
1976	79	78	88	78	69	79	60	70	82	78	77	100	938
1977	65	71	89	79	65	79	70	91	68	74	96	107	954
1978	75	54	95	63	64	69	68	77	65	84	83	72	869
1979	63	60	86	75	45	64	66	75	69	79	72	93	847
1980	48	55	66	59	47	56	60	53	45	58	61	49	657
1981	69	60	58	61	74	65	61	63	68	71	59	57	766
1982	55	53	59	59	67	45	47	71	53	69	65	66	709
1983	42	59	53	63	62	61	65	51	59	43	54	52	664
1984	65	48	58	50	56	48	46	50	71	53	55	58	658
1985	56	47	50	65	75	50	51	50	58	61	56	64	683
1986	56	50	70	69	59	53	42	54	54	52	59	51	669
1987	62	43	57	52	63	59	62	49	62	61	55	80	705
1988	49	58	69	54	79	50	54	52	64	59	43	70	701
1989	76	65	80	59	67	73	52	65	82	50	41	66	776
1990	48	44	55	39	56	64	41	34	48	35	40	44	548
1991	45	39	70	30	34	29	44	47	41	36	35	53	503
1992	34	33	34	47	33	29	23	27	28	38	30	40	396
1993	27	40	37	39	44	33	33	27	34	39	43	40	436
1994	36	31	44	35	27	33	29	37	17	27	32	30	378
1995	38	35	26	33	34	41	27	34	34	32	38	46	418
1996	40	47	35	38	28	29	30	35	49	24	33	30	418
1997	36	25	30	30	40	22	39	26	26	29	39	35	377
1998	29	29	32	36	31	22	40	19	37	36	49	30	390
1999	32	31	35	35	34	24	35	26	28	38	29	37	384
2000	32	26	46	32	39	32	33	29	36	29	44	29	407
2001	44	30	31	32	31	41	34	37	35	51	41	37	444
2002	32	31	45	31	45	32	27	25	31	30	31	37	397
2003	21	41	36	28	31	28	20	23	23	24	24	31	330
2004	32	22	30	30	46	28	27	26	22	28	25	27	343
2005	33	27	47	21	29	23	30	25	25	33	17	36	346
2006	24	37	23	23	27	23	25	22	43	20	31	39	337
2007	23	23	32	25	26	28	28	20	23	37	26	41	332
2008	28	20	37	25	25	20	27	27	18	25	26	25	303
2009	31	18	23	32	19	30	19	21	14	28	21	34	290
2010	26	25	23	20	31	26	26	18	17	36	12	28	288
2011	18	20	34	31	30	24	25	14	12	22	30	27	287
2012	30	20	25	19	23	22	17	25	17	34	26	24	282
2013	14	24	24	19	18	13	24	20	19	15	23	30	243
2014	25	21	25	14	23	17	22	21	20	19	28	14	249
2015	25	22	23	21	21	22	18	25	13	28	21	21	254
<b>Ave</b>	<b>48</b>	<b>46</b>	<b>55</b>	<b>53</b>	<b>53</b>	<b>51</b>	<b>51</b>	<b>49</b>	<b>49</b>	<b>49</b>	<b>49</b>	<b>55</b>	<b>613</b>
<b>Max</b>	<b>85</b>	<b>84</b>	<b>106</b>	<b>103</b>	<b>97</b>	<b>94</b>	<b>110</b>	<b>106</b>	<b>89</b>	<b>95</b>	<b>96</b>	<b>107</b>	<b>1,061</b>
<b>Min</b>	<b>14</b>	<b>18</b>	<b>23</b>	<b>14</b>	<b>18</b>	<b>13</b>	<b>17</b>	<b>14</b>	<b>12</b>	<b>15</b>	<b>12</b>	<b>14</b>	<b>243</b>

**Fatalities by Week (2009 to 2015)**

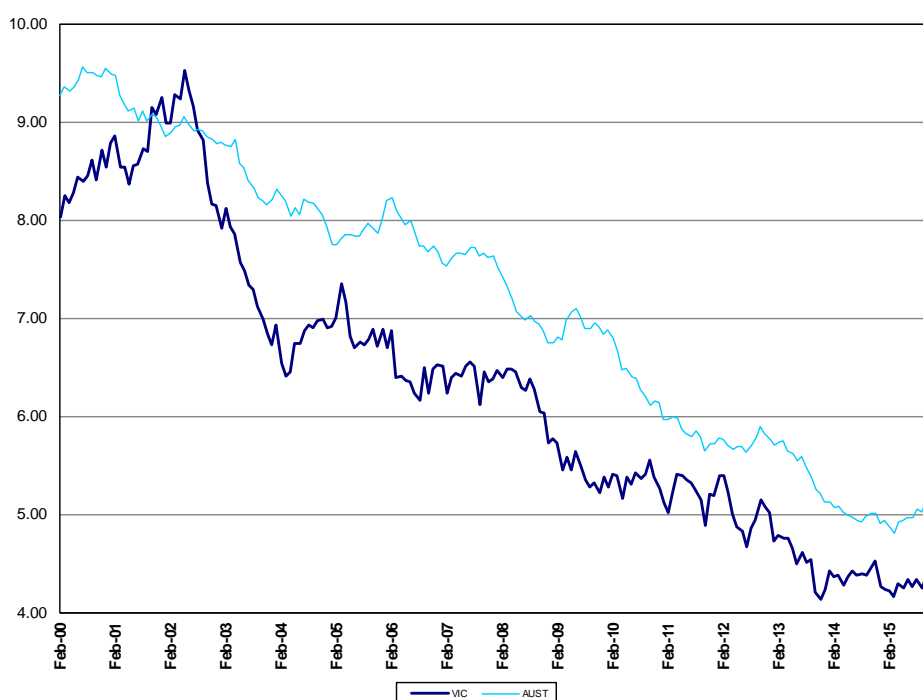
<b>Week Ending</b>	<b>2009</b>	<b>2010</b>	<b>2011</b>	<b>2012</b>	<b>2013</b>	<b>2014</b>	<b>2015</b>	<b>Cumulative 2015</b>	<b>% Change 2015-2014</b>	<b>12 Month Moving Total</b>
5-Jan	7	3	2	3	1	0	2	2	-	251
12-Jan	10	5	6	7	3	5	5	7	+40%	251
19-Jan	4	6	3	8	6	7	6	13	+8%	250
26-Jan	4	5	4	9	4	9	2	15	-29%	243
2-Feb	6	9	6	5	3	6	10	25	-7%	247
9-Feb	6	7	5	3	8	4	6	31	0%	249
16-Feb	7	4	6	7	6	8	4	35	-10%	245
23-Feb	4	8	3	6	6	2	6	41	0%	249
2-Mar	1	7	3	2	2	6	4	45	-4%	247
9-Mar	3	2	10	3	4	8	8	53	-4%	247
16-Mar	6	8	6	11	6	4	6	59	0%	249
23-Mar	6	3	9	5	10	4	2	61	-3%	247
30-Mar	8	7	9	6	2	6	3	64	-7%	244
6-Apr	5	4	6	7	4	6	3	67	-11%	241
13-Apr	5	5	9	2	6	6	6	73	-10%	241
20-Apr	11	7	7	6	4	2	8	81	-2%	247
27-Apr	9	1	6	3	5	2	5	86	+1%	250
4-May	6	6	6	10	6	3	4	90	+2%	251
11-May	7	8	6	2	3	4	6	96	+4%	253
18-May	1	4	7	4	1	3	4	100	+5%	254
25-May	2	11	10	6	2	5	4	104	+4%	253
1-Jun	6	5	5	2	9	9	5	109	0%	249
8-Jun	4	7	4	8	2	2	5	114	+3%	252
15-Jun	9	4	6	3	3	2	4	118	+4%	254
22-Jun	7	8	7	8	5	3	4	122	+5%	255
29-Jun	9	7	6	3	1	8	5	127	+2%	252
6-Jul	3	7	4	2	5	6	11	138	+6%	257
13-Jul	6	2	8	5	7	7	2	140	+2%	252
20-Jul	4	3	6	5	4	3	2	142	+1%	251
27-Jul	5	8	6	5	5	4	4	146	+1%	251
3-Aug	4	10	3	1	8	4	6	152	+3%	253
10-Aug	7	3	5	5	1	5	4	156	+2%	252
17-Aug	6	5	3	5	3	6	8	164	+3%	254
24-Aug	3	5	2	6	6	4	8	172	+6%	258
31-Aug	3	1	3	8	5	5	3	175	+4%	256
7-Sep	2	5	1	5	5	4	3	178	+3%	255
14-Sep	4	1	4	6	2	6	3	181	+2%	252
21-Sep	4	4	1	3	3	4	2	183	+1%	250
28-Sep	3	5	5	3	8	3	5	188	+2%	252
5-Oct	2	9	4	7	3	4	4	192	+2%	252
12-Oct	6	10	5	8	2	8	6	198	+1%	250
19-Oct	8	5	3	9	3	0	6	204	+4%	256
26-Oct	8	7	3	6	3	8	8	212	+3%	256
2-Nov	5	8	8	6	6	2	5	217	+5%	259
9-Nov	3	1	6	7	8	3	5	222	+6%	261
16-Nov	9	2	12	6	2	8	4	226	+4%	257
23-Nov	6	3	9	5	8	3	2	228	+3%	256
30-Nov	4	5	2	9	4	13	5	233	-0%	248
7-Dec	5	4	10	7	6	5	8	241	+1%	251
14-Dec	8	8	3	4	10	3	5	246	+2%	253
21-Dec	11	6	7	1	9	3	2	248	+1%	252
28-Dec	6	8	6	8	4	3	5	253	+2%	254
31-Dec	2	2	1	1	1	1	1	254	+2%	504
<b>Total</b>	<b>290</b>	<b>288</b>	<b>287</b>	<b>282</b>	<b>243</b>	<b>249</b>	<b>254</b>			

## The National Picture

State	Fatalities (12 months to December)					2015 v 2014	
	2015	2014	2013	2012			
NSW	322	307	333	369	+15	(+5%)	
VIC	252	248	243	282	+4	(+2%)	
QLD	242	223	271	280	+19	(+9%)	
SA	102	108	98	94	-6	(-6%)	
WA	160	182	161	184	-22	(-12%)	
TAS	36	36	36	32	NA	(0%)	
NT	49	39	37	49	+10	(+26%)	
ACT	15	10	7	12	+5	(+50%)	
AUST TOTAL	1,204	1,154	1,186	1,302	+50	(+4%)	
AUST minus VIC	952	905	943	1,020	+47	(+5%)	

State	Fatalities per 10,000 registered vehicles (12 months to December)			Fatalities per 100,000 population (12 months to December)		
	2015	2014	2013	2015	2014	2013
NSW	0.61	0.60	0.66	4.23	4.08	4.50
VIC	0.55	0.55	0.55	4.24	4.26	4.24
QLD	0.64	0.60	0.74	5.06	4.72	5.82
SA	0.75	0.81	0.75	6.00	6.41	5.87
WA	0.73	0.84	0.77	6.17	7.07	6.40
TAS	0.79	0.81	0.82	6.97	6.99	7.02
NT	3.14	2.54	2.47	20.03	15.91	15.45
ACT	0.53	0.36	0.25	3.84	2.59	1.83
AUST TOTAL	0.66	0.65	0.68	5.06	4.91	5.13
AUST minus VIC	0.70	0.68	0.73	5.34	5.08	5.42

Deaths per 100,000 population, Victoria v Australia 2000 - 2015



Victoria v Australia - 12 Month Moving Fatality Rate

## Booze-Bus Random Breath Testing

12 months to September 2015 (monthly totals)

	2014			2015								
	Oct	Nov	Dec	Jan	Feb	Mar	Apr	May	Jun	Jul	Aug	Sep
Melbourne	100,252	86,261	99,008	95,430	76,758	84,559	74,387	70,603	63,988	64,557	78,225	79,794
Country	8,116	10,510	7,084	5,191	7,909	5,830	3,095	7,283	10,186	2,833	3,734	4,598
Vic Total	108,368	96,771	106,092	100,621	84,667	90,389	77,482	77,886	74,174	67,390	81,959	84,392

12 months to September 2015 vs previous 12 months

	2015	2014	2013	2015 v 2014		2015 v 2013	
Melbourne	1,172,395	1,060,175	1,062,075	+112220	(+11%)	+110320	(+10%)
Country	99,061	90,264	101,223	+8797	(+10%)	-2162	(-2%)
Vic Total	1,271,456	1,150,439	1,163,298	+121017	(+11%)	+108158	(+9%)

## Mobile Safety Camera Data

Speed Infringements Issued from Mobile Cameras (monthly totals)

Monthly Average = 32,664

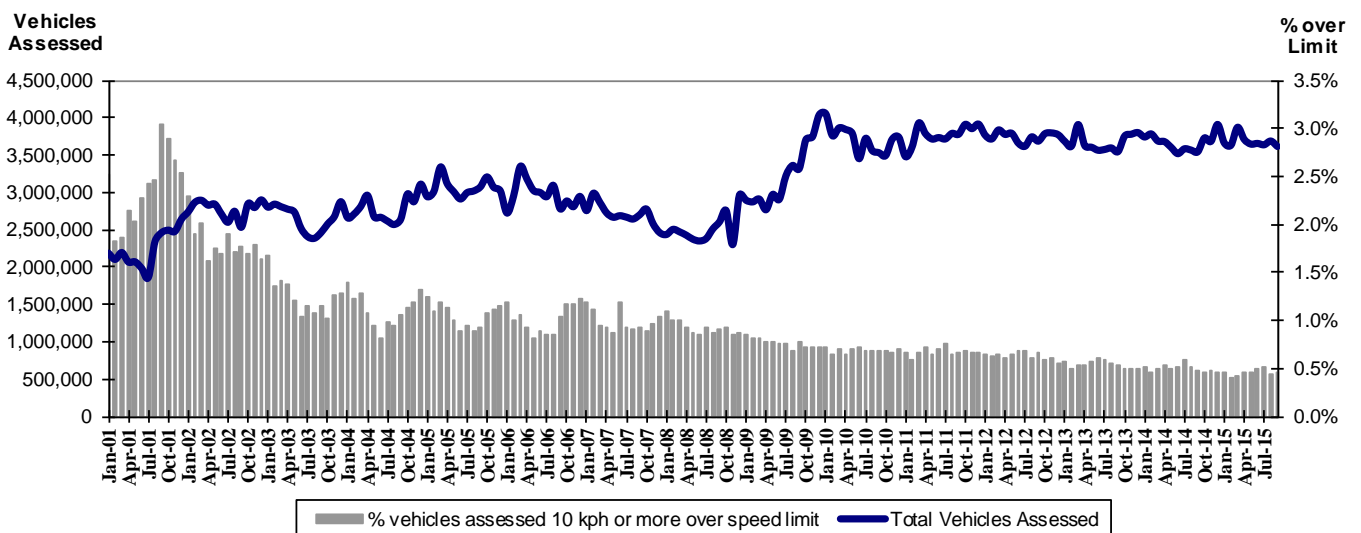
2014	2015											
	Oct	Nov	Dec	Jan	Feb	Mar	Apr	May	Jun	Jul	Aug	Sep
	35,422	32,416	28,732	37,982	31,250	31,144	33,790	30,434	33,386	36,437	31,001	29,975

Excessive Speed Infringements (ESI) Issued from Mobile Cameras (monthly totals)

Monthly Average = 303

2014	2015											
	Oct	Nov	Dec	Jan	Feb	Mar	Apr	May	Jun	Jul	Aug	Sep
	334	287	258	311	270	303	335	258	342	338	312	283

Notes: An ESI is defined as 25km/h over the speed limit except in a 110km/h zone where it is 20km/h over the limit.



Mobile Safety Cameras – Vehicles assessed and percentage of vehicles assessed 10km/h or more over speed limit per month

## Explanations and References

Hi-AlcTime is those times of the day and week (*shaded* in the table below) when casualty crashes are ten times more likely to involve alcohol than casualty crashes at other (Lo-AlcTime) times.

	12am - 6am	6am - 8am	8am - 10am	10am - 2pm	2pm - 4pm	4pm - 6pm	6pm - 12pm
Monday							
Tuesday							
Wednesday							
Thursday							
Friday							
Saturday							
Sunday							

Police Service Areas align with Local Government Areas. Most Police Service Areas are equivalent to a single Local Government Area, while the remainder comprise two or three Local Government Areas.

Police Service Area	Local Government Area(s)	Police Service Area	Local Government Area(s)
BALLARAT	BALLARAT, PYRENEES	MAROONDAH	MAROONDAH
BANYULE	BANYULE	MELBOURNE	MELBOURNE
BASS COAST	BASS COAST, SOUTH GIPPSLAND	MELTON	MELTON
BAW BAW	BAWBAW	MILDURA	MILDURA
BENALLA	BENALLA, MANSFIELD, MURRINDINDI	MITCHELL	MITCHELL, STRATHBOGIE
BENDIGO	GREATER BENDIGO	MONASH	MONASH
BOROONDARA	BOROONDARA	MOONEE VALLEY	MOONEE VALLEY
BRIMBANK	BRIMBANK	MOORABOOL	GOLDEN PLAINS, HEPBURN, MOORABOOL
CAMPASPE	CAMPASPE	MORELAND	MORELAND
CARDINIA	CARDINIA	MORNINGTON PENINSULA	MORNINGTON PENINSULA
CASEY	CASEY	NILLUMBIK	NILLUMBIK
CENTRAL GOLDFIELDS	CENTRAL GOLDFIELDS, LODDON	NORTHERN GRAMPIANS	ARARAT, NORTHERN GRAMPIANS, YARRIAMBICK
GREATER DANDENONG	GREATER DANDENONG	PORT PHILLIP	PORT PHILLIP
DAREBIN	DAREBIN	SHEPPARTON	GREATER SHEPPARTON
EAST GIPPSLAND	EAST GIPPSLAND	SOUTHERN GRAMPIANS	GLENELG, SOUTHERN GRAMPIANS
FRANKSTON	FRANKSTON	STONNINGTON	STONNINGTON
GEELONG	GREATER GEELONG, QUEENSCLIFF	SURFCOAST	SURFCOAST, COLAC OTWAY
GLENEIRA	GLENEIRA, BAYSIDE	SWANHILL	BULOKE, GANNAWARRA, SWAN HILL
HOBSONS BAY	HOBSONSBAY	WANGARATTA	ALPINE, MOIRA, WANGARATTA
HORSHAM	HINDMARSH, HORSHAM, WESTWIMMERA	WARRNAMBOOL	CORANGAMITE, MOYNE, WARRNAMBOOL
HUME	HUME	WELLINGTON	WELLINGTON
KINGSTON	KINGSTON	WHITEHORSE	WHITEHORSE
KNOX	KNOX	WHITTLESEA	WHITTLESEA
LATROBE	LATROBE	WODONGA	INDIGO, TOWONG, WODONGA
MACEDON RANGES	MOUNT ALEXANDER, MACEDON RANGES	WYNDHAM	WYNDHAM
MANNINGHAM	MANNINGHAM	YARRA	YARRA
MARIBYRNONG	MARIBYRNONG	YARRA RANGES	YARRA RANGES



## Useful Internet Sites

### TAC Sites

- TAC Safety (Road Safety) [www.tacsafety.com.au](http://www.tacsafety.com.au)
- TAC How safe is your car [www.howsafeisyourcar.com.au](http://www.howsafeisyourcar.com.au)
- TAC Learners Log [www.learnerslog.com.au](http://www.learnerslog.com.au)
- TAC Motorcycle Safety Website [www.spokes.com.au](http://www.spokes.com.au)
- TAC Corporate site [www.tac.vic.gov.au](http://www.tac.vic.gov.au)

### Victorian Sites:

- VicRoads [www.vicroads.vic.gov.au](http://www.vicroads.vic.gov.au)
- Victoria Police [www.police.vic.gov.au](http://www.police.vic.gov.au)
- Parliamentary Road Safety Committee [www.parliament.vic.gov.au/rsc/](http://www.parliament.vic.gov.au/rsc/)
- ARRB Transport Research [www.arrb.com.au](http://www.arrb.com.au)
- RACV [www.racv.com.au](http://www.racv.com.au)
- Monash University Accident Research Centre [www.monash.edu.au/muarc](http://www.monash.edu.au/muarc)
- Roadsafe [www.roadsafe.org.au](http://www.roadsafe.org.au)
- Cameras Save Lives [www.camerassavelives.vic.gov.au](http://www.camerassavelives.vic.gov.au)

### National and Interstate Sites:

- Australian Transport Safety Bureau [www.atsb.gov.au](http://www.atsb.gov.au)
- Roads and Traffic Authority (NSW) [www.rta.nsw.gov.au](http://www.rta.nsw.gov.au)
- Queensland Transport - Road Safety [transport.qld.gov.au/Home/Safety/Road](http://transport.qld.gov.au/Home/Safety/Road)
- Department of Transport (SA) [www.transport.sa.gov.au/index.htm](http://www.transport.sa.gov.au/index.htm)
- Main Roads Western Australia - Road Safety [www.mrwa.wa.gov.au](http://www.mrwa.wa.gov.au)

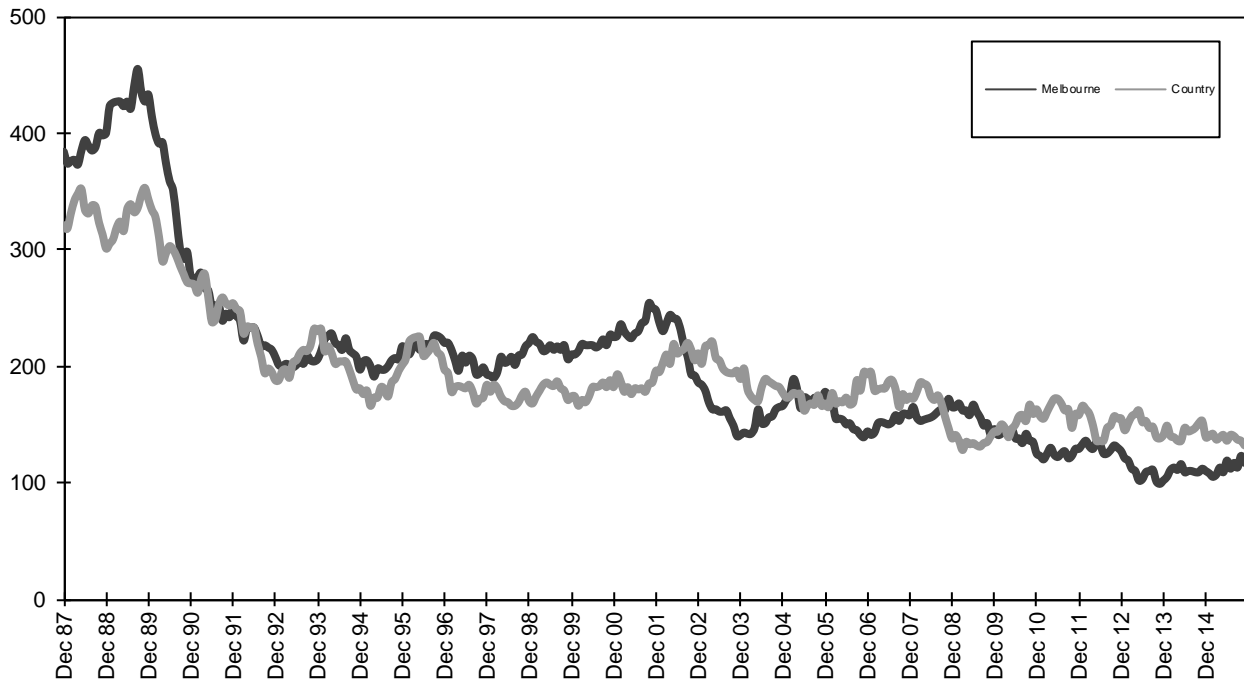
### International Sites:

- National Highway Traffic Safety Admin (USA) [www.nhtsa.dot.gov](http://www.nhtsa.dot.gov)
- Swedish Road and Transport Institute (VTI) [www.vti.se](http://www.vti.se)
- SWOV Institute for Road Safety Research [www.swov.nl](http://www.swov.nl)

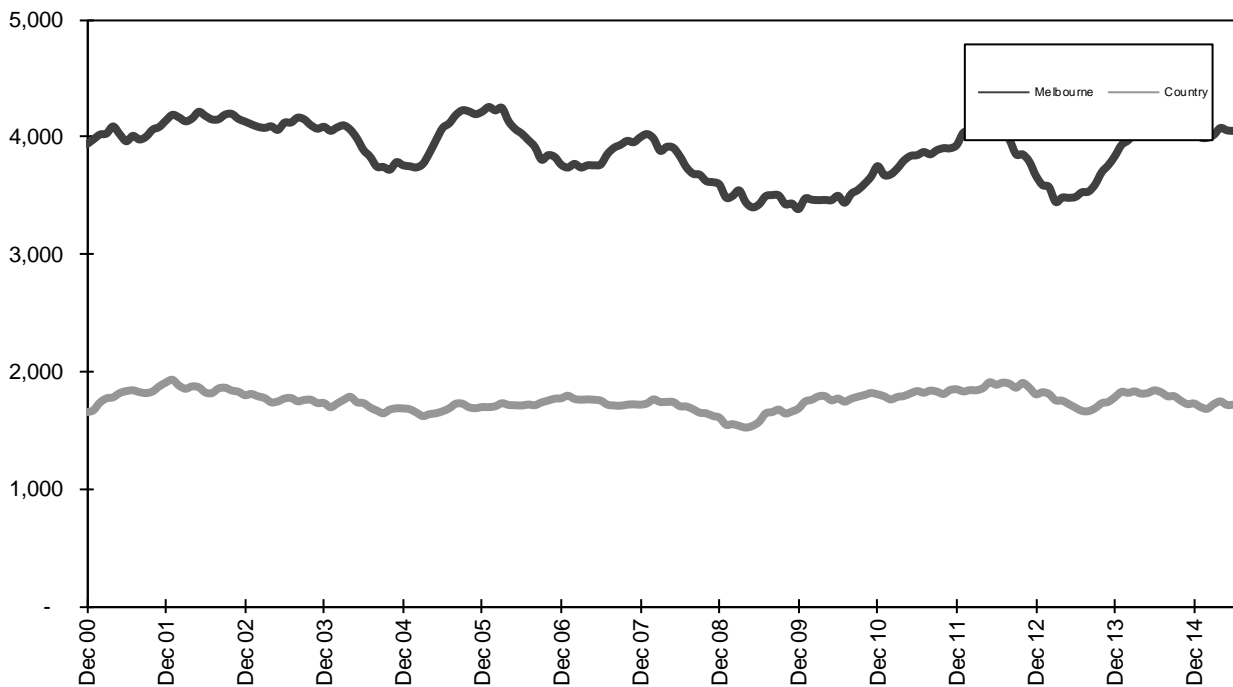
### Related Sites:

- Australian Drug Foundation [www.adf.org.au](http://www.adf.org.au)
- Amy Gillett Foundation [www.amygillett.org.au](http://www.amygillett.org.au)

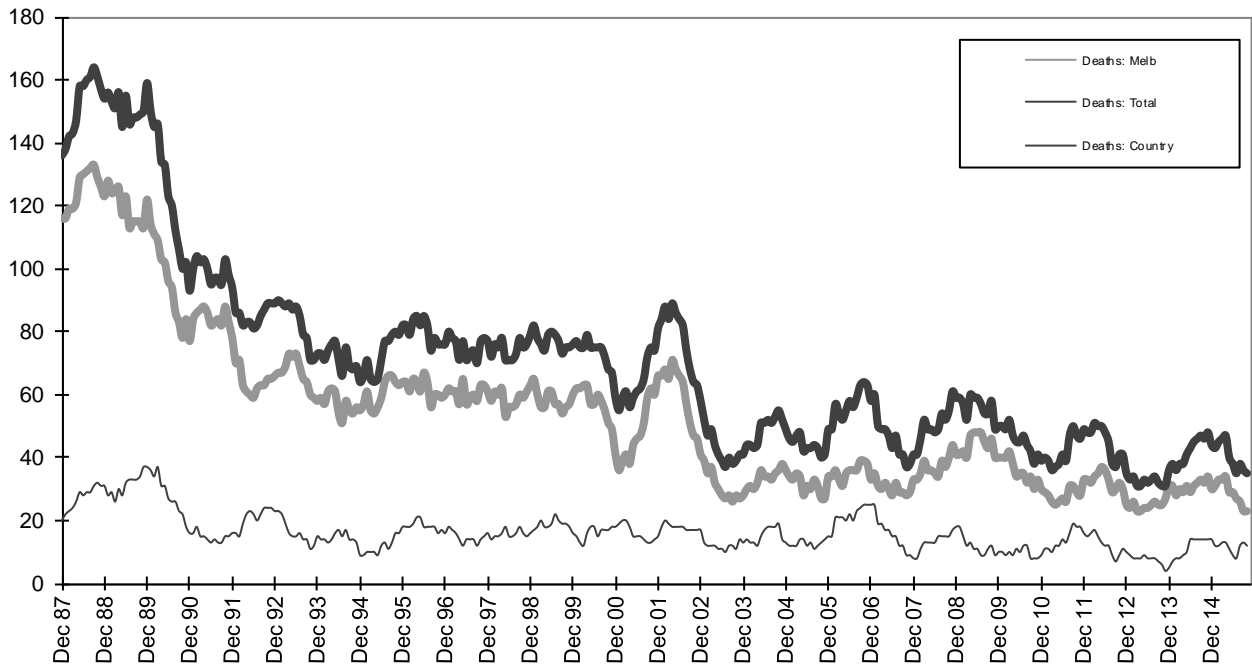
Figures



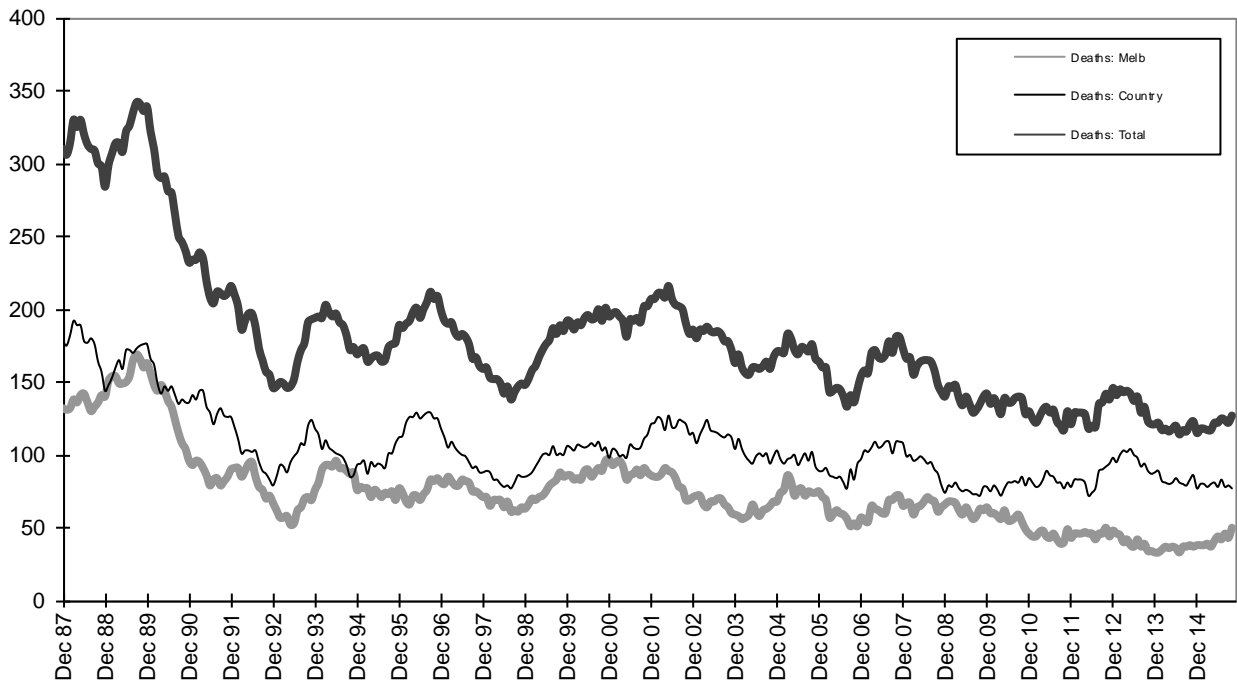
Graph 1a - Melbourne/country fatalities



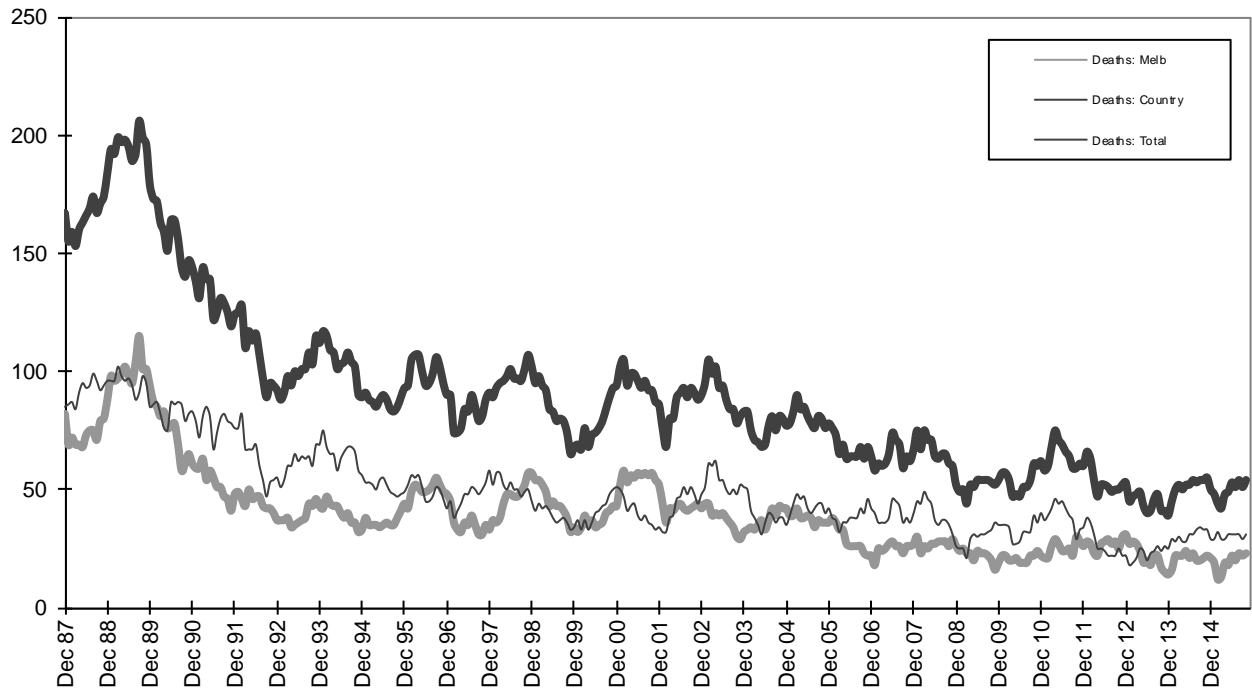
Graph 1b - Melbourne/country Claims involving an acute hospital admission



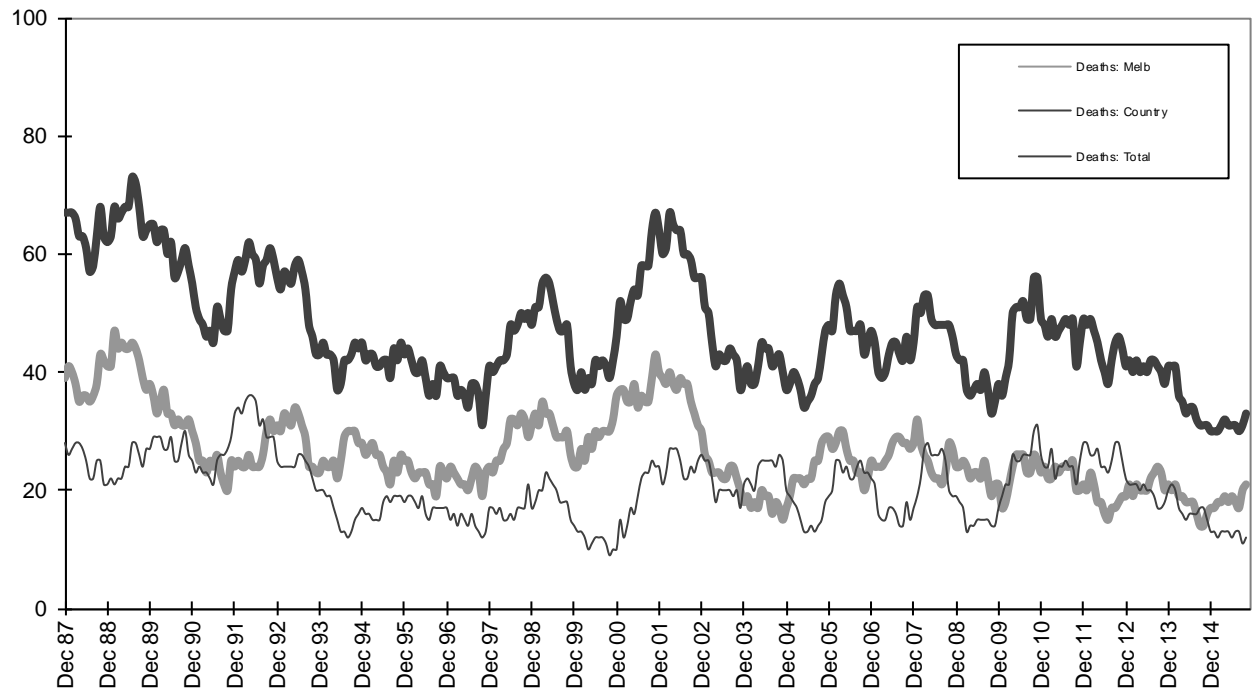
Graph 2a - Pedestrian fatalities (Melbourne/country)



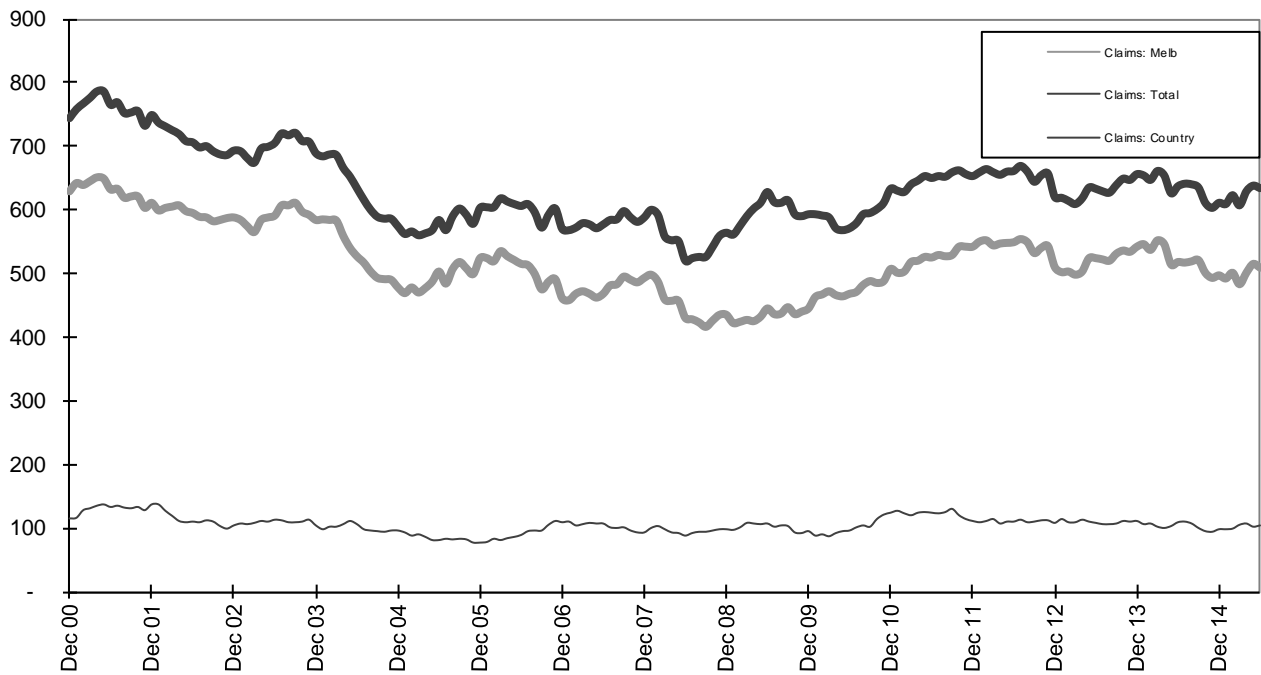
Graph 2b - Driver fatalities (Melbourne/country)



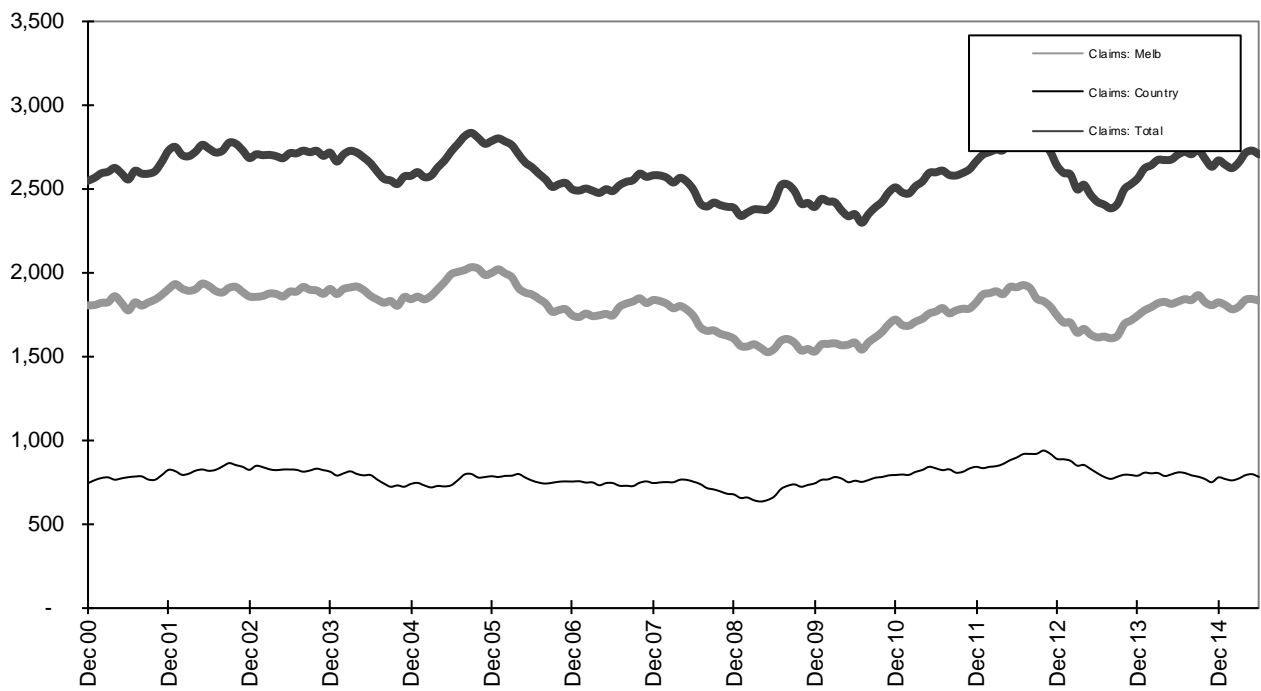
Graph 2c - Passenger fatalities (Melbourne/country)



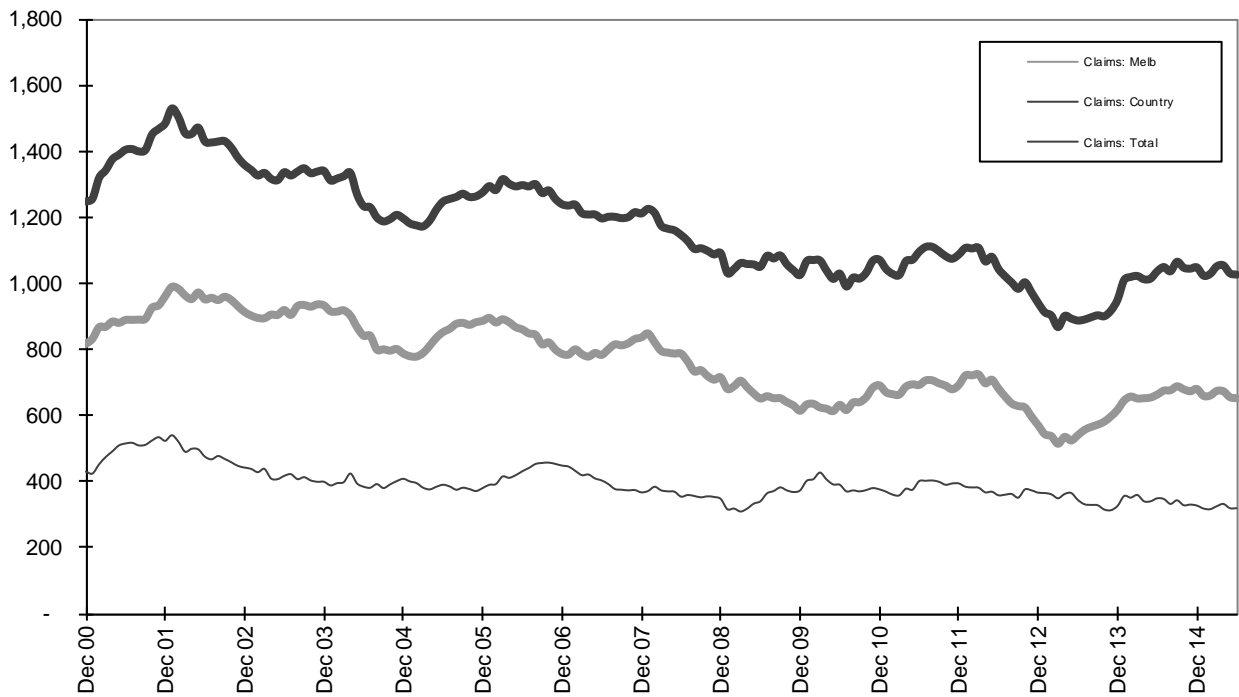
Graph 2d - Motorcyclist fatalities (Melbourne/country)



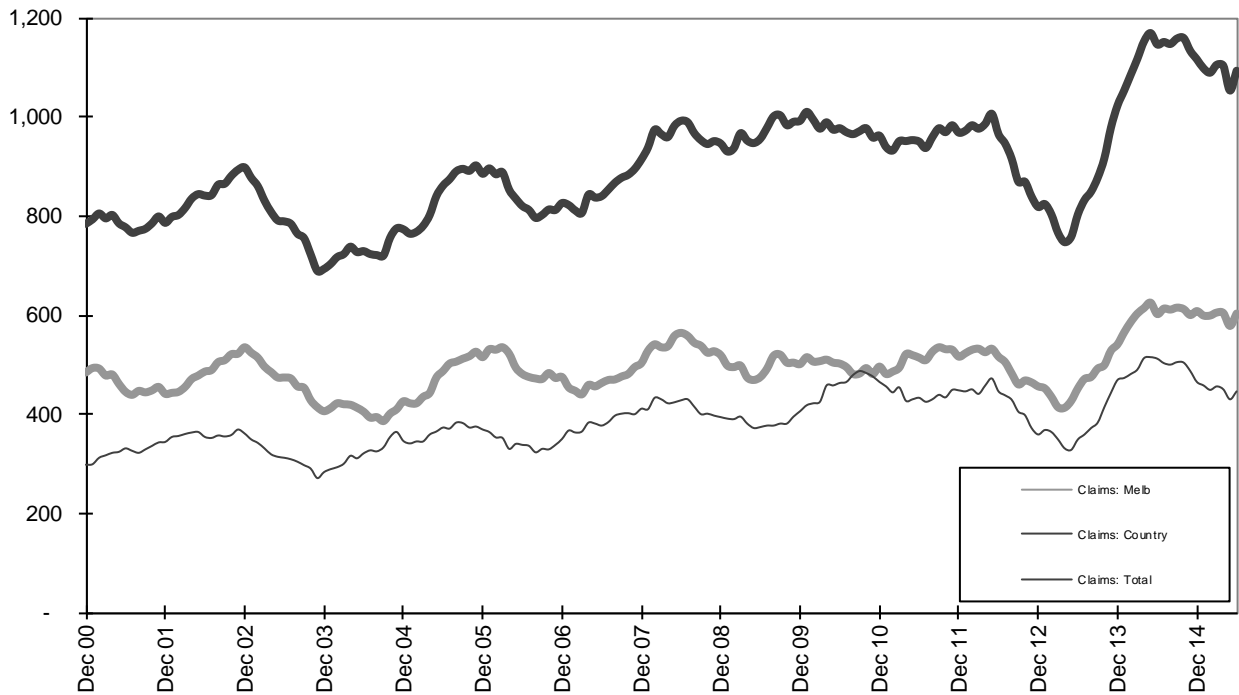
Graph 3a – Pedestrian Claims involving an acute hospital admission (Melbourne/country)



Graph 3b – Driver Claims involving an acute hospital admission (Melbourne/country)



Graph 3c - Passenger Claims involving an acute hospital admission (Melbourne/country)



Graph 3d - Motorcyclist Claims involving an acute hospital admission (Melbourne/country)