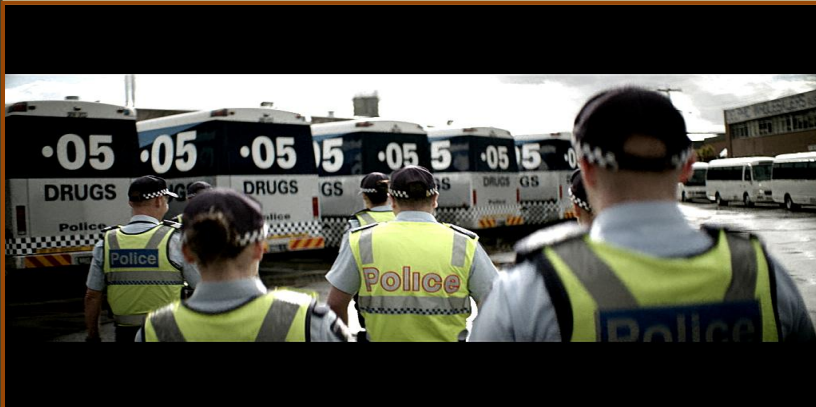
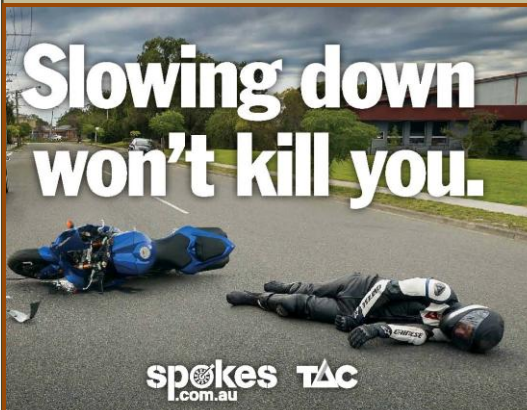


# ROAD SAFETY STATISTICAL SUMMARY

## June 2013



**TRANSPORT  
ACCIDENT  
COMMISSION**

60 Brougham Street  
Geelong Vic 3220  
PO Box 742  
Geelong Vic 3220  
Ausdoc DX 216079 Geelong

Telephone 1300 654 329  
STD Toll Free 1800 332 556  
Fax: 03 9656 9300  
www.tac.vic.gov.au  
ABN 22 033 947 623



## Contents

Status Report.....	4
Fatalities.....	4
Claims involving acute hospitalisation over 14 days and an acute hospital admission* .....	5
Fatalities: 12 months to June 2013 .....	6
Claims involving acute hospitalisation over 14 days: 12 months to December 2012 (claim acceptance date)..	8
Claims involving an acute hospital admission: 12 months to December 2012 (claim acceptance date) .....	10
Fatalities: Victorian monthly totals since 1951 .....	12
Fatalities by Week (2007 to 2013).....	13
Alcohol Related Fatalities.....	14
The National Picture .....	15
Booze-Bus Random Breath Testing .....	16
Mobile Safety Camera Data .....	16
Explanations and References .....	17
Useful Internet Sites.....	18
Figures .....	19

### Note about the data in this report

- All data provided in this report is the data most recently available at time of production. Fatalities, breath-test data and safety camera data are updated to the end of report month. A 6-month lag applies to TAC claims data, and a 2-month lag applies to alcohol related fatalities data.
- Reported data inclusive of February 2008 or February 2012 will have one extra day of exposure compared to non-leap years.
- Data is subject to revision as additional information about known accidents/claims is received, and as new accident/claim reports are received and processed.

\*An acute hospital admission refers to a hospital admission that occurred within 7 days of accident.

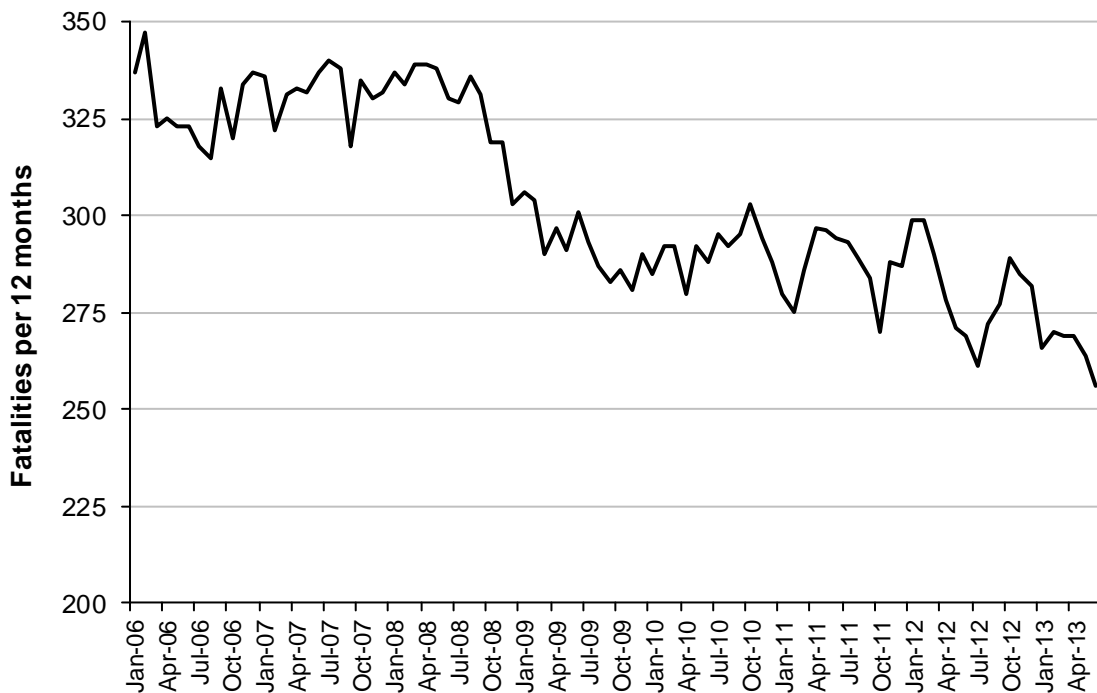
## Status Report

### Fatalities

- The rolling 12 month number of road fatalities in June 2013 stands at 256, 5% less than in 2012 (269).
- 14 people were fatally injured in June 2013 and 18 in May 2013 on Victorian roads. This compares to 22 in June 2012 and 23 in May 2012.

### Fatalities (year to date, to end June 2013)

Category	2013	2012	2011	2013 v 2012	2013 v 2011	5 Year Av
<b>Fatal Injuries (Rolling 12 Month Total)</b>						
Fatal (to June)	256	269	294	-13	(-5%)	283
per 10,000 veh	0.59	0.63	0.70	-0.04	(-6%)	0.65
per 100,000 pop	4.53	4.83	5.34	-0.30	(-6%)	5.00
<b>Accidents (Rolling 12 Month Total)</b>						
Fatal (to June)	220	245	273	-25	(-10%)	256
per 10,000 veh	0.50	0.57	0.65	-0.07	(-12%)	0.61
per 100,000 pop	3.88	4.40	4.96	-0.52	(-12%)	4.65

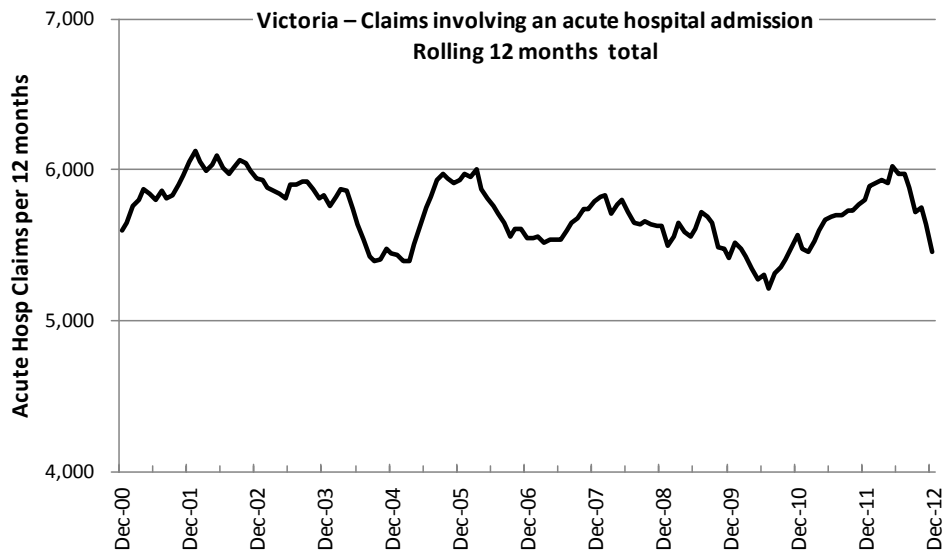
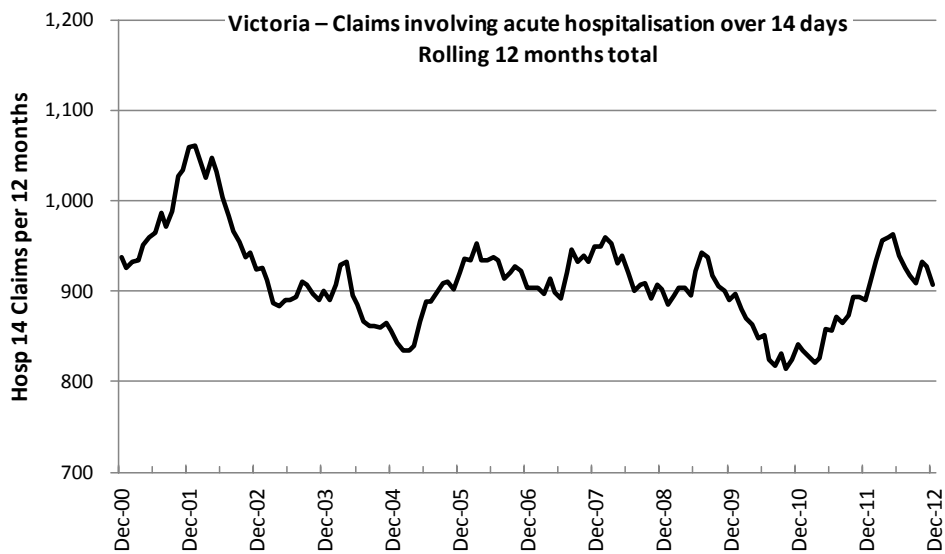


Victoria – Fatalities, rolling 12 months total

**Claims involving acute hospitalisation over 14 days and an acute hospital admission\***

(by claim acceptance date - year to date, to midnight 31 December 2012)

Category	2012	2011	2010	2012 v 2011		2012 v 2010		5 Year Av
<b>Claims involving acute hospitalisation over 14 days (Rolling 12 Month Total)</b>								
Claims (to December)	908	889	841	+19	(+2%)	+67	(+8%)	892
per 10,000 veh	2.1	2.1	2.0	0.0	(+0%)	+0.1	(+5%)	2.2
per 100,000 pop	16.1	16.1	15.4	0.0	(+0%)	+0.7	(+5%)	16.7
<b>Claims involving an acute hospital admission (Rolling 12 Month Total)</b>								
Claims (to December)	5,489	5,801	5,564	-312	(-5%)	-75	(-1%)	5,620
per 10,000 veh	12.7	13.7	13.4	-1.0	(-7%)	-0.7	(-6%)	14.0
per 100,000 pop	97.6	104.8	101.7	-7.2	(-7%)	-4.1	(-4%)	104.8



\*An acute hospital admission refers to a hospital admission that occurred within 7 days of accident.

## Fatalities: 12 months to June 2013

Category	2013	2012	2011	2013 v 2012		2013 v 2011		5 Year Av
<b>Overview</b>								
Fatalities	256	269	294	-13	(-5%)	-38	(-13%)	283
Accidents	220	245	273	-25	(-10%)	-53	(-19%)	256
<b>Sex</b>								
Female	78	83	74	-5	(-6%)	+4	(+5%)	81
Male	178	186	220	-8	(-4%)	-42	(-19%)	200
<b>Roaduser</b>								
Bicyclist	6	9	7	-3	(-33%)	-1	(-14%)	8
Driver	138	120	129	+18	(+15%)	+9	(+7%)	133
Motorcyclist	41	40	48	+1	(+2%)	-7	(-15%)	44
Passenger	39	52	69	-13	(-25%)	-30	(-43%)	52
Pedestrian	32	48	41	-16	(-33%)	-9	(-22%)	45
<b>Location</b>								
Melbourne	102	133	122	-31	(-23%)	-20	(-16%)	132
Rural Victoria	154	136	172	+18	(+13%)	-18	(-10%)	149
<b>Agegroup</b>								
0-4	2	3	7	-1	(-33%)	-5	(-71%)	5
5-15	7	9	6	-2	(-22%)	+1	(+17%)	8
16-17	2	9	6	-7	(-78%)	-4	(-67%)	7
18-20	20	35	36	-15	(-43%)	-16	(-44%)	31
21-25	32	26	43	+6	(+23%)	-11	(-26%)	32
26-29	13	23	21	-10	(-43%)	-8	(-38%)	20
30-39	34	41	27	-7	(-17%)	+7	(+26%)	38
40-49	29	25	40	+4	(+16%)	-11	(-28%)	35
50-59	33	30	33	+3	(+10%)	0	(0%)	33
60-69	39	24	27	+15	(+63%)	+12	(+44%)	28
70+	43	44	48	-1	(-2%)	-5	(-10%)	45
<b>Alctime</b>								
High (Melb)	59	69	64	-10	(-14%)	-5	(-8%)	70
High (Rural)	74	60	97	+14	(+23%)	-23	(-24%)	72
High (Vic)	133	129	161	+4	(+3%)	-28	(-17%)	142
Low (Melb)	43	64	58	-21	(-33%)	-15	(-26%)	62
Low (Rural)	80	76	75	+4	(+5%)	+5	(+7%)	77
Low (Vic)	123	140	133	-17	(-12%)	-10	(-8%)	139
<b>Accident Type</b>								
<b>Intersection</b>								
Adjacent direction	30	23	35	0	(+30%)	-5	(-14%)	25
Opposing direction	3	4	9	-1	(-25%)	-6	(-67%)	5
<b>Mid-block/other</b>								
Head on	44	37	31	+7	(+19%)	+13	(+42%)	38
Same direction	14	12	17	+2	(+17%)	-3	(-18%)	16
Manoeuvre/o'taking	11	17	18	-6	(-35%)	-7	(-39%)	17
On path	4	6	8	-2	(-33%)	-4	(-50%)	6
Single vehicle	111	112	130	-1	(-1%)	-19	(-15%)	121
Other (incl peds)	39	58	46	-19	(-33%)	-7	(-15%)	53

## Fatalities: 12 months to June 2013 – Continued

Category	2013	2012	2011	2013 v 2012		2013 v 2011		5 Year Av
<b>Police Service Area (based on Local Government Area (see p.13))</b>								
BALLARAT	4	2	14	+2	(+100%)	-10	(-71%)	5
BANYULE	3	3	3	0	(0%)	0	(0%)	3
BASS COAST	3	6	7	-3	(-50%)	-4	(-57%)	6
BAW BAW	7	2	14	+5	(+250%)	-7	(-50%)	6
BENALLA	10	5	7	+5	(+100%)	+3	(+43%)	8
BENDIGO	9	10	4	-1	(-10%)	+5	(+125%)	7
BOROONDARA	5	1	2	+4	(+400%)	+3	(+150%)	4
BRIMBANK	6	11	4	-5	(-45%)	+2	(+50%)	6
CAMPASPE	8	6	2	+2	(+33%)	+6	(+300%)	4
CARDINIA	1	11	7	-10	(-91%)	-6	(-86%)	6
CASEY	6	4	11	+2	(+50%)	-5	(-45%)	8
CENTRAL GOLDFIELDS	1	2	8	-1	(-50%)	-7	(-88%)	3
DAREBIN	1	6	2	-5	(-83%)	-1	(-50%)	3
EAST GIPPSLAND	5	7	8	-2	(-29%)	-3	(-38%)	8
FRANKSTON	0	3	7	-3	(-100%)	-7	(-100%)	5
GEELONG	14	9	14	+5	(+56%)	0	(0%)	11
GLEN EIRA	7	6	4	+1	(+17%)	+3	(+75%)	6
GREATER DANDENONG	5	5	3	0	(0%)	+2	(+67%)	6
HOBSONS BAY	2	1	1	+1	(+100%)	+1	(+100%)	1
HORSHAM	4	7	4	-3	(-43%)	0	(0%)	4
HUME	12	5	4	+7	(+140%)	+8	(+200%)	8
KINGSTON	6	8	1	-2	(-25%)	+5	(+500%)	5
KNOX	2	2	1	0	(0%)	+1	(+100%)	3
LA TROBE	7	6	4	+1	(+17%)	+3	(+75%)	6
MACEDON RANGES	6	4	4	+2	(+50%)	+2	(+50%)	6
MANNINGHAM	3	2	0	+1	(+50%)	+3		3
MARIBYRNONG	5	2	1	+3	(+150%)	+4	(+400%)	2
MAROONDAH	2	5	3	-3	(-60%)	-1	(-33%)	2
MELBOURNE	2	6	4	-4	(-67%)	-2	(-50%)	4
MELTON	3	6	6	-3	(-50%)	-3	(-50%)	6
MILDURA	2	1	5	+1	(+100%)	-3	(-60%)	3
MITCHELL	9	8	7	+1	(+13%)	+2	(+29%)	8
MONASH	4	2	6	+2	(+100%)	-2	(-33%)	5
MOONEE VALLEY	1	1	2	0	(0%)	-1	(-50%)	2
MOORABOOL	9	9	9	0	(0%)	0	(0%)	8
MORELAND	3	2	5	+1	(+50%)	-2	(-40%)	4
MORNINGTON PENINSULA	1	8	10	-7	(-88%)	-9	(-90%)	7
NILLUMBIK	0	4	2	-4	(-100%)	-2	(-100%)	2
NORTHERN GRAMPIANS	6	3	3	+3	(+100%)	+3	(+100%)	4
PORT PHILLIP	1	1	2	0	(0%)	-1	(-50%)	2
SHEPPARTON	8	9	5	-1	(-11%)	+3	(+60%)	7
SOUTHERN GRAMPIANS	5	6	3	-1	(-17%)	+2	(+67%)	5
STONNINGTON	2	2	1	0	(0%)	+1	(+100%)	1
SURF COAST	4	10	9	-6	(-60%)	-5	(-56%)	7
SWAN HILL	5	5	7	0	(0%)	-2	(-29%)	5
WANGARATTA	12	10	15	+2	(+20%)	-3	(-20%)	12
WARRNAMBOOL	4	4	7	0	(0%)	-3	(-43%)	5
WELLINGTON	4	2	9	+2	(+100%)	-5	(-56%)	5
WHITEHORSE	1	4	6	-3	(-75%)	-5	(-83%)	4
WHITTLESEA	4	5	6	-1	(-20%)	-2	(-33%)	7
WODONGA	5	3	3	+2	(+67%)	+2	(+67%)	4
WYNDHAM	9	4	7	+5	(+125%)	+2	(+29%)	7
YARRA	2	2	5	0	(0%)	-3	(-60%)	3
YARRA RANGES	6	11	6	-5	(-45%)	0	(0%)	9

## Claims involving acute hospitalisation over 14 days: 12 months to December 2012 (claim acceptance date)

Category	2012	2011	2010	2012 v 2011		2012 v 2010		5 Year Av
<b>Overview</b>								
Claims	908	889	841	+19	(+2%)	+67	(+8%)	886
<b>Sex</b>								
Female	402	341	326	+61	(+18%)	+76	(+23%)	355
Male	505	547	515	-42	(-8%)	-10	(-2%)	531
<b>Roaduser</b>								
Driver	374	338	312	+36	(+11%)	+62	(+20%)	338
Passenger	149	150	128	-1	(-1%)	+21	(+16%)	149
Motorcyclist	154	156	189	-2	(-1%)	-35	(-19%)	166
Pedestrian	170	184	165	-14	(-8%)	+5	(+3%)	173
Cyclist	37	42	38	-5	(-12%)	-1	(-3%)	38
Train/Tram	10	5	7	+5	(+100%)	+3	(+43%)	6
<b>Location</b>								
Melbourne	595	568	537	+27	(+5%)	+58	(+11%)	559
Rural Victoria	307	307	299	0	(0%)	+8	(+3%)	299
<b>Agegroup</b>								
0-4	1	3	7	-2	(-67%)	-6	(-86%)	4
5-15	11	17	16	-6	(-35%)	-5	(-31%)	15
16-17	21	19	20	+2	(+11%)	+1	(+5%)	21
18-20	56	49	61	+7	(+14%)	-5	(-8%)	62
21-25	80	87	78	-7	(-8%)	+2	(+3%)	85
26-29	48	67	49	-19	(-28%)	-1	(-2%)	54
30-39	119	120	98	-1	(-1%)	+21	(+21%)	118
40-49	129	107	125	+22	(+21%)	+4	(+3%)	118
50-59	98	108	90	-10	(-9%)	+8	(+9%)	99
60-69	110	105	91	+5	(+5%)	+19	(+21%)	100
70+	235	207	206	+28	(+14%)	+29	(+14%)	209
<b>Alctime</b>								
High (Melb)	258	263	210	-5	(-2%)	+48	(+23%)	247
High (Rural)	123	129	123	-6	(-5%)	0	(0%)	126
High (Vic)	381	392	333	-11	(-3%)	+48	(+14%)	374
Low (Melb)	337	305	327	+32	(+10%)	+10	(+3%)	311
Low (Rural)	184	178	176	+6	(+3%)	+8	(+5%)	173
Low (Vic)	521	483	503	+38	(+8%)	+18	(+4%)	484
<b>Accident Type</b>								
<b>Intersection</b>								
Adjacent direction	120	115	115	+5	(+4%)	+5	(+4%)	119
Opposing direction	63	65	53	-2	(-3%)	+10	(+19%)	61
<b>Mid-block/other</b>								
Head on	85	83	74	+2	(+2%)	+11	(+15%)	78
Same direction	88	94	100	-6	(-6%)	-12	(-12%)	84
Manoeuvre/o'taking	62	47	52	+15	(+32%)	+10	(+19%)	54
On path	17	23	29	-6	(-26%)	-12	(-41%)	23
Single vehicle	246	254	221	-8	(-3%)	+25	(+11%)	254
Other (incl peds)	227	208	197	+19	(+9%)	+30	(+15%)	207

Note: excludes rejected claims and claims for interstate crashes



Claims involving acute hospitalisation over 14 days: 12 months to December 2012 (claim acceptance date) - Continued

Category	2012	2011	2010	2012 v 2011		2012 v 2010		5 Year Av
<b>Police Service Area (based on Local Government Area (see p.13))</b>								
BALLARAT	8	18	13	-10	(-56%)	-5	(-38%)	11
BANYULE	10	7	15	+3	(+43%)	-5	(-33%)	10
BASS COAST	13	21	16	-8	(-38%)	-3	(-19%)	18
BAW BAW	12	15	6	-3	(-20%)	+6	(+100%)	9
BENALLA	16	20	14	-4	(-20%)	+2	(+14%)	16
BENDIGO	14	16	25	-2	(-13%)	-11	(-44%)	15
BOROONDARA	24	23	25	+1	(+4%)	-1	(-4%)	22
BRIMBANK	29	27	12	+2	(+7%)	+17	(+142%)	22
CAMPASPE	6	5	5	+1	(+20%)	+1	(+20%)	6
CARDINIA	13	18	20	-5	(-28%)	-7	(-35%)	17
CASEY	22	27	30	-5	(-19%)	-8	(-27%)	27
CENTRAL GOLDFIELDS	2	2	2	0	(0%)	0	(0%)	3
DAREBIN	20	13	19	+7	(+54%)	+1	(+5%)	18
EAST GIPPSLAND	17	10	17	+7	(+70%)	0	(0%)	15
FRANKSTON	10	19	20	-9	(-47%)	-10	(-50%)	18
GEELONG	32	24	21	+8	(+33%)	+11	(+52%)	27
GLEN EIRA	23	32	35	-9	(-28%)	-12	(-34%)	29
GREATER DANDENONG	23	33	27	-10	(-30%)	-4	(-15%)	27
HOBSONS BAY	13	9	9	+4	(+44%)	+4	(+44%)	10
HORSHAM	9	8	9	+1	(+13%)	0	(0%)	7
HUME	32	22	24	+10	(+45%)	+8	(+33%)	25
KINGSTON	17	20	16	-3	(-15%)	+1	(+6%)	19
KNOX	26	10	12	+16	(+160%)	+14	(+117%)	17
LA TROBE	14	21	15	-7	(-33%)	-1	(-7%)	13
MACEDON RANGES	14	9	25	+5	(+56%)	-11	(-44%)	16
MANNINGHAM	21	15	9	+6	(+40%)	+12	(+133%)	13
MARIBYRNONG	17	11	16	+6	(+55%)	+1	(+6%)	14
MAROONDAH	7	14	11	-7	(-50%)	-4	(-36%)	11
MELBOURNE	31	28	30	+3	(+11%)	+1	(+3%)	27
MELTON	20	15	7	+5	(+33%)	+13	(+186%)	12
MILDURA	10	7	6	+3	(+43%)	+4	(+67%)	7
MITCHELL	26	11	20	+15	(+136%)	+6	(+30%)	18
MONASH	22	22	22	0	(0%)	0	(0%)	23
MOONEE VALLEY	21	13	13	+8	(+62%)	+8	(+62%)	15
MOORABOOL	10	13	12	-3	(-23%)	-2	(-17%)	15
MORELAND	25	22	20	+3	(+14%)	+5	(+25%)	20
MORNINGTON PENINSULA	38	28	28	+10	(+36%)	+10	(+36%)	30
NILLUMBIK	7	6	4	+1	(+17%)	+3	(+75%)	6
NORTHERN GRAMPPIANS	6	5	5	+1	(+20%)	+1	(+20%)	5
PORT PHILLIP	12	10	9	+2	(+20%)	+3	(+33%)	14
SHEPPARTON	13	9	12	+4	(+44%)	+1	(+8%)	14
SOUTHERN GRAMPPIANS	9	8	11	+1	(+13%)	-2	(-18%)	9
STONNINGTON	14	22	15	-8	(-36%)	-1	(-7%)	16
SURF COAST	8	16	8	-8	(-50%)	0	(0%)	12
SWAN HILL	7	3	5	+4	(+133%)	+2	(+40%)	6
WANGARATTA	18	16	17	+2	(+13%)	+1	(+6%)	16
WARRNAMBOOL	13	16	10	-3	(-19%)	+3	(+30%)	12
WELLINGTON	10	11	8	-1	(-9%)	+2	(+25%)	11
WHITEHORSE	21	17	19	+4	(+24%)	+2	(+11%)	21
WHITTLESEA	28	16	16	+12	(+75%)	+12	(+75%)	20
WODONGA	13	7	11	+6	(+86%)	+2	(+18%)	10
WYNDHAM	21	20	12	+1	(+5%)	+9	(+75%)	17
YARRA	10	13	10	-3	(-23%)	0	(0%)	11
YARRA RANGES	18	36	32	-18	(-50%)	-14	(-44%)	30

Note: excludes rejected claims and claims for interstate crashes

## Claims involving an acute hospital admission: 12 months to December 2012 (claim acceptance date)

Category	2012	2011	2010	2012 v 2011	2012 v 2010	2012 v 2010	5 Year Av	
<b>Overview</b>								
Claims	5,489	5,801	5,564	-312	(-5%)	-75	(-1%)	5,579
<b>Sex</b>								
Female	2,366	2,459	2,382	-93	(-4%)	-16	(-1%)	2,351
Male	3,122	3,341	3,178	-219	(-7%)	-56	(-2%)	3,227
<b>Roaduser</b>								
Driver	2,626	2,659	2,504	-33	(-1%)	+122	(+5%)	2,511
Passenger	930	1,086	1,069	-156	(-14%)	-139	(-13%)	1,040
Motorcyclist	814	966	962	-152	(-16%)	-148	(-15%)	936
Pedestrian	616	652	635	-36	(-6%)	-19	(-3%)	612
Cyclist	358	346	337	+12	(+3%)	+21	(+6%)	328
Train/Tram	28	21	25	+7	(+33%)	+3	(+12%)	21
<b>Location</b>								
Melbourne	3,627	3,908	3,742	-281	(-7%)	-115	(-3%)	3,651
Rural Victoria	1,785	1,827	1,797	-42	(-2%)	-12	(-1%)	1,740
<b>Agegroup</b>								
0-4	48	52	51	-4	(-8%)	-3	(-6%)	50
5-15	179	203	223	-24	(-12%)	-44	(-20%)	206
16-17	110	125	138	-15	(-12%)	-28	(-20%)	136
18-20	502	554	546	-52	(-9%)	-44	(-8%)	564
21-25	684	737	661	-53	(-7%)	+23	(+3%)	702
26-29	421	418	435	+3	(+1%)	-14	(-3%)	423
30-39	867	913	874	-46	(-5%)	-7	(-1%)	906
40-49	807	882	825	-75	(-9%)	-18	(-2%)	823
50-59	686	714	700	-28	(-4%)	-14	(-2%)	667
60-69	475	529	472	-54	(-10%)	+3	(+1%)	461
70+	710	674	639	+36	(+5%)	+71	(+11%)	642
<b>Alctime</b>								
High (Melb)	1,625	1,815	1,658	-190	(-10%)	-33	(-2%)	1,663
High (Rural)	751	791	794	-40	(-5%)	-43	(-5%)	765
High (Vic)	2,376	2,606	2,452	-230	(-9%)	-76	(-3%)	2,427
Low (Melb)	2,002	2,093	2,084	-91	(-4%)	-82	(-4%)	1,988
Low (Rural)	1,034	1,036	1,003	-2	(-0%)	+31	(+3%)	975
Low (Vic)	3,036	3,129	3,087	-93	(-3%)	-51	(-2%)	2,963
<b>Accident Type</b>								
<b>Intersection</b>								
Adjacent direction	790	907	846	-117	(-13%)	-56	(-7%)	838
Opposing direction	494	466	451	+28	(+6%)	+43	(+10%)	457
<b>Mid-block/other</b>								
Head on	307	358	316	-51	(-14%)	-9	(-3%)	324
Same direction	848	950	920	-102	(-11%)	-72	(-8%)	844
Manoeuvre/o'taking	296	326	340	-30	(-9%)	-44	(-13%)	322
On path	216	191	216	+25	(+13%)	0	(0%)	209
Single vehicle	1,478	1,640	1,579	-162	(-10%)	-101	(-6%)	1,599
Other (incl peds)	1,060	963	896	+97	(+10%)	+164	(+18%)	931

Note: excludes rejected claims and claims for interstate crashes

Claims involving an acute hospital admission: 12 months to December 2012 (claim acceptance date) -  
Continued

Category	2012	2011	2010	2012 v 2011		2012 v 2010		5 Year Av
<b>Police Service Area (based on Local Government Area (see p.13))</b>								
BALLARAT	93	102	90	-9	(-9%)	+3	(+3%)	89
BANYULE	63	54	67	+9	(+17%)	-4	(-6%)	63
BASS COAST	68	89	78	-21	(-24%)	-10	(-13%)	75
BAW BAW	61	66	47	-5	(-8%)	+14	(+30%)	50
BENALLA	91	102	113	-11	(-11%)	-22	(-19%)	99
BENDIGO	125	101	88	+24	(+24%)	+37	(+42%)	93
BOROONDARA	111	138	151	-27	(-20%)	-40	(-26%)	129
BRIMBANK	174	166	100	+8	(+5%)	+74	(+74%)	144
CAMPASPE	45	33	43	+12	(+36%)	+2	(+5%)	37
CARDINIA	79	101	99	-22	(-22%)	-20	(-20%)	88
CASEY	214	241	237	-27	(-11%)	-23	(-10%)	222
CENTRAL GOLDFIELDS	7	6	8	+1	(+17%)	-1	(-13%)	9
DAREBIN	95	96	116	-1	(-1%)	-21	(-18%)	101
EAST GIPPSLAND	79	68	56	+11	(+16%)	+23	(+41%)	62
FRANKSTON	123	149	153	-26	(-17%)	-30	(-20%)	137
GEELONG	214	233	245	-19	(-8%)	-31	(-13%)	224
GLEN EIRA	155	166	182	-11	(-7%)	-27	(-15%)	161
GREATER DANDENONG	183	213	190	-30	(-14%)	-7	(-4%)	179
HOBSONS BAY	66	58	67	+8	(+14%)	-1	(-1%)	65
HORSHAM	38	38	35	0	(0%)	+3	(+9%)	31
HUME	142	140	149	+2	(+1%)	-7	(-5%)	147
KINGSTON	132	124	131	+8	(+6%)	+1	(+1%)	133
KNOX	103	121	124	-18	(-15%)	-21	(-17%)	120
LA TROBE	56	83	64	-27	(-33%)	-8	(-13%)	60
MACEDON RANGES	72	74	88	-2	(-3%)	-16	(-18%)	76
MANNINGHAM	81	65	71	+16	(+25%)	+10	(+14%)	68
MARIBYRNONG	72	103	58	-31	(-30%)	+14	(+24%)	77
MAROONDAH	52	82	74	-30	(-37%)	-22	(-30%)	68
MELBOURNE	242	226	216	+16	(+7%)	+26	(+12%)	205
MELTON	73	80	63	-7	(-9%)	+10	(+16%)	67
MILDURA	37	39	29	-2	(-5%)	+8	(+28%)	33
MITCHELL	99	74	93	+25	(+34%)	+6	(+6%)	80
MONASH	162	161	166	+1	(+1%)	-4	(-2%)	163
MOONEE VALLEY	121	95	91	+26	(+27%)	+30	(+33%)	99
MOORABOOL	92	92	78	0	(0%)	+14	(+18%)	97
MORELAND	126	158	132	-32	(-20%)	-6	(-5%)	136
MORNINGTON PENINSULA	155	188	161	-33	(-18%)	-6	(-4%)	164
NILLUMBIK	39	45	36	-6	(-13%)	+3	(+8%)	37
NORTHERN GRAMPPIANS	32	38	27	-6	(-16%)	+5	(+19%)	33
PORT PHILLIP	107	125	91	-18	(-14%)	+16	(+18%)	111
SHEPPARTON	71	59	60	+12	(+20%)	+11	(+18%)	70
SOUTHERN GRAMPPIANS	46	45	43	+1	(+2%)	+3	(+7%)	42
STONNINGTON	107	134	118	-27	(-20%)	-11	(-9%)	116
SURF COAST	51	79	72	-28	(-35%)	-21	(-29%)	76
SWAN HILL	28	24	22	+4	(+17%)	+6	(+27%)	30
WANGARATTA	102	93	110	+9	(+10%)	-8	(-7%)	102
WARRNAMBOOL	83	96	113	-13	(-14%)	-30	(-27%)	84
WELLINGTON	69	88	63	-19	(-22%)	+6	(+10%)	72
WHITEHORSE	115	109	137	+6	(+6%)	-22	(-16%)	120
WHITTLESEA	155	104	134	+51	(+49%)	+21	(+16%)	124
WODONGA	85	50	73	+35	(+70%)	+12	(+16%)	65
WYNDHAM	131	163	105	-32	(-20%)	+26	(+25%)	122
YARRA	92	109	118	-17	(-16%)	-26	(-22%)	99
YARRA RANGES	157	194	205	-37	(-19%)	-48	(-23%)	188

Note: excludes rejected claims and claims for interstate crashes

## Fatalities: Victorian monthly totals since 1951

Year	Jan	Feb	Mar	Apr	May	Jun	Jul	Aug	Sep	Oct	Nov	Dec	Totals
1951							61	59	52	38	29	41	
1952	45	40	54	61	54	69	67	55	44	44	31	20	584
1953	23	28	54	58	49	42	50	37	44	27	36	32	480
1954	44	42	28	60	55	36	63	33	25	52	30	41	509
1955	44	36	45	55	48	56	64	44	44	32	40	40	548
1956	34	48	51	67	53	65	71	47	39	39	44	48	606
1957	50	41	46	58	52	54	57	53	51	46	32	49	589
1958	50	38	42	58	54	41	54	53	57	40	57	52	596
1959	50	57	61	50	75	55	42	48	52	55	63	63	671
1960	49	53	57	76	70	70	67	62	61	77	52	66	760
1961	63	57	68	74	58	68	78	82	59	62	60	65	794
1962	65	41	76	78	72	80	70	77	62	53	64	70	808
1963	67	56	65	85	66	68	77	55	55	58	61	67	780
1964	73	71	78	71	83	89	80	89	67	66	62	75	904
1965	63	64	86	88	80	87	79	69	81	77	68	87	929
1966	75	59	75	103	74	86	87	80	75	66	90	85	955
1967	61	79	91	97	81	71	59	67	70	68	60	83	887
1968	70	78	86	78	73	76	73	77	72	80	81	105	949
1969	79	68	79	87	86	77	87	83	87	83	94	101	1,011
1970	85	84	106	80	87	88	110	106	78	95	68	74	1,061
1971	83	75	77	68	76	86	85	72	78	73	74	76	923
1972	61	62	75	82	75	71	98	85	83	62	80	81	915
1973	75	75	95	85	64	66	61	85	89	88	66	86	935
1974	56	62	81	60	70	73	67	62	53	70	80	72	806
1975	67	65	87	73	97	94	57	75	69	66	71	89	910
1976	79	78	88	78	69	79	60	70	82	78	77	100	938
1977	65	71	89	79	65	79	70	91	68	74	96	107	954
1978	75	54	95	63	64	69	68	77	65	84	83	72	869
1979	63	60	86	75	45	64	66	75	69	79	72	93	847
1980	48	55	66	59	47	56	60	53	45	58	61	49	657
1981	69	60	58	61	74	65	61	63	68	71	59	57	766
1982	55	53	59	59	67	45	47	71	53	69	65	66	709
1983	42	59	53	63	62	61	65	51	59	43	54	52	664
1984	65	48	58	50	56	48	46	50	71	53	55	58	658
1985	56	47	50	65	75	50	51	50	58	61	56	64	683
1986	56	50	70	69	59	53	42	54	54	52	59	51	669
1987	62	43	57	52	63	59	62	49	62	61	55	80	705
1988	49	58	69	54	79	50	54	52	64	59	43	70	701
1989	76	65	80	59	67	73	52	65	82	50	41	66	776
1990	48	44	55	39	56	64	41	34	48	35	40	44	548
1991	45	39	70	30	34	29	44	47	41	36	35	53	503
1992	34	33	34	47	33	29	23	27	28	38	30	40	396
1993	27	40	37	39	44	33	33	27	34	39	43	40	436
1994	36	31	44	35	27	33	29	37	17	27	32	30	378
1995	38	35	26	33	34	41	27	34	34	32	38	46	418
1996	40	47	35	38	28	29	30	35	49	24	33	30	418
1997	36	25	30	30	40	22	39	26	26	29	39	35	377
1998	29	29	32	36	31	22	40	19	37	36	49	30	390
1999	32	31	35	35	34	24	35	26	28	38	29	37	384
2000	32	26	46	32	39	32	33	29	36	29	44	29	407
2001	44	30	31	32	31	41	34	37	35	51	41	37	444
2002	32	31	45	31	45	32	27	25	31	30	31	37	397
2003	21	41	36	28	31	28	20	23	23	24	24	31	330
2004	32	22	30	30	46	28	27	26	22	28	25	27	343
2005	33	27	47	21	29	23	30	25	25	33	17	36	346
2006	24	37	23	23	27	23	25	22	43	20	31	39	337
2007	23	23	32	25	26	28	28	20	23	37	26	41	332
2008	28	20	37	25	25	20	27	27	18	25	26	25	303
2009	31	18	23	32	19	30	19	21	14	28	21	34	290
2010	26	25	23	20	31	26	26	18	17	36	12	28	288
2011	18	20	34	31	30	24	25	14	12	22	30	27	287
2012	30	20	25	19	23	22	17	25	17	34	26	24	282
2013	14	24	24	19	18	14							
<b>Ave</b>	<b>49</b>	<b>47</b>	<b>56</b>	<b>54</b>	<b>54</b>	<b>52</b>	<b>52</b>	<b>51</b>	<b>50</b>	<b>51</b>	<b>50</b>	<b>56</b>	<b>625</b>
<b>Max</b>	<b>85</b>	<b>84</b>	<b>106</b>	<b>103</b>	<b>97</b>	<b>94</b>	<b>110</b>	<b>106</b>	<b>89</b>	<b>95</b>	<b>96</b>	<b>107</b>	<b>1,061</b>
<b>Min</b>	<b>14</b>	<b>18</b>	<b>23</b>	<b>19</b>	<b>18</b>	<b>14</b>	<b>17</b>	<b>14</b>	<b>12</b>	<b>20</b>	<b>12</b>	<b>20</b>	<b>282</b>

**Fatalities by Week (2007 to 2013)**

Week Ending	2007	2008	2009	2010	2011	2012	2013	Cumulative 2013	% Change 2013-2012	12 Month Moving Total
6-Jan	3	1	3	1	2	1	2	2	0%	283
13-Jan	2	8	11	6	1	3	3	5	+67%	283
20-Jan	7	5	6	1	6	9	5	10	+11%	279
27-Jan	5	4	2	9	4	7	4	14	+8%	276
3-Feb	5	8	8	6	4	9	6	20	+18%	273
10-Feb	7	5	1	9	8	4	7	27	+8%	276
17-Feb	4	4	10	5	3	2	4	31	+11%	278
24-Feb	10	4	3	8	5	10	6	37	+12%	274
3-Mar	3	8	5	4	4	4	2	39	+5%	272
10-Mar	9	8	2	6	8	1	5	44	-2%	276
17-Mar	9	5	6	5	6	4	5	49	-4%	277
24-Mar	3	13	3	4	9	12	10	59	-2%	275
31-Mar	8	7	7	8	8	4	3	62	-9%	274
7-Apr	4	10	8	5	5	7	4	66	-10%	271
14-Apr	11	3	5	4	12	6	5	71	-16%	270
21-Apr	4	6	8	6	5	2	5	76	-16%	273
28-Apr	3	6	10	4	6	6	5	81	-16%	272
5-May	7	5	6	4	7	2	5	86	-17%	275
12-May	3	7	7	3	4	10	4	90	-16%	269
19-May	6	4	4	9	7	2	0	90	-21%	267
26-May	8	8	1	6	11	5	2	92	-26%	264
2-Jun	6	6	3	12	4	5	11	103	-20%	270
9-Jun	15	2	7	2	5	4	3	106	-21%	269
16-Jun	3	6	6	7	9	6	0	106	-26%	263
23-Jun	4	4	8	8	3	4	7	113	-23%	266
30-Jun	7	7	6	5	6	7	0	113	-26%	259
7-Jul	2	5	7	8	5	4				
14-Jul	9	10	9	4	10	2				
21-Jul	7	2	2	3	5	4				
28-Jul	6	3	5	5	8	5				
4-Aug	5	8	3	10	2	5				
11-Aug	2	8	3	7	4	2				
18-Aug	2	6	11	3	6	4				
25-Aug	4	3	4	5	1	5				
1-Sep	11	7	1	2	1	10				
8-Sep	3	5	4	3	3	5				
15-Sep	7	3	1	4	3	4				
22-Sep	4	6	7	1	3	6				
29-Sep	8	6	2	6	1	4				
6-Oct	5	6	2	4	5	2				
13-Oct	12	8	2	12	7	8				
20-Oct	6	4	8	7	2	10				
27-Oct	8	4	9	8	3	8				
3-Nov	6	4	8	6	7	5				
10-Nov	6	4	4	5	5	5				
17-Nov	7	7	6	0	12	7				
24-Nov	4	10	6	3	8	7				
1-Dec	7	3	4	3	5	5				
8-Dec	8	4	5	7	7	8				
15-Dec	16	9	5	6	6	7				
22-Dec	5	3	11	6	7	4				
29-Dec	8	9	10	9	6	4				
31-Dec	8	2	5	4	3	6				
<b>Total</b>	<b>332</b>	<b>303</b>	<b>290</b>	<b>288</b>	<b>287</b>	<b>282</b>				

## Alcohol Related Fatalities

### NOTE: UPDATES TO THIS DATA WERE NOT AVAILABLE AT TIME OF REPORT

- 24% of fatally injured and tested drivers and riders had a BAC at 0.05 g/100ml or over (41 of 172) compared to 25% over the previous 12 month period (43 of 169).
- In Melbourne, 21 drivers/riders fatally injured and tested were at or over 0.05, with 38% of these having a BAC in excess of 0.15 g/100ml. Across rural Victoria, 20 drivers/riders fatally injured and tested were at or over 0.05, with 65% of these having a BAC over 0.15.
- Of the 41 drivers and riders fatally injured and tested at or over 0.05, 15% (6) were aged under 21, 39% (16) were aged 21-29, 27% (11) were aged 30-39 and 20% (8) were aged 40 years and over. In the previous year (43 fatally injured) the corresponding figures were 19% (8), 28% (12), 19% (8) and 35% (15), respectively.

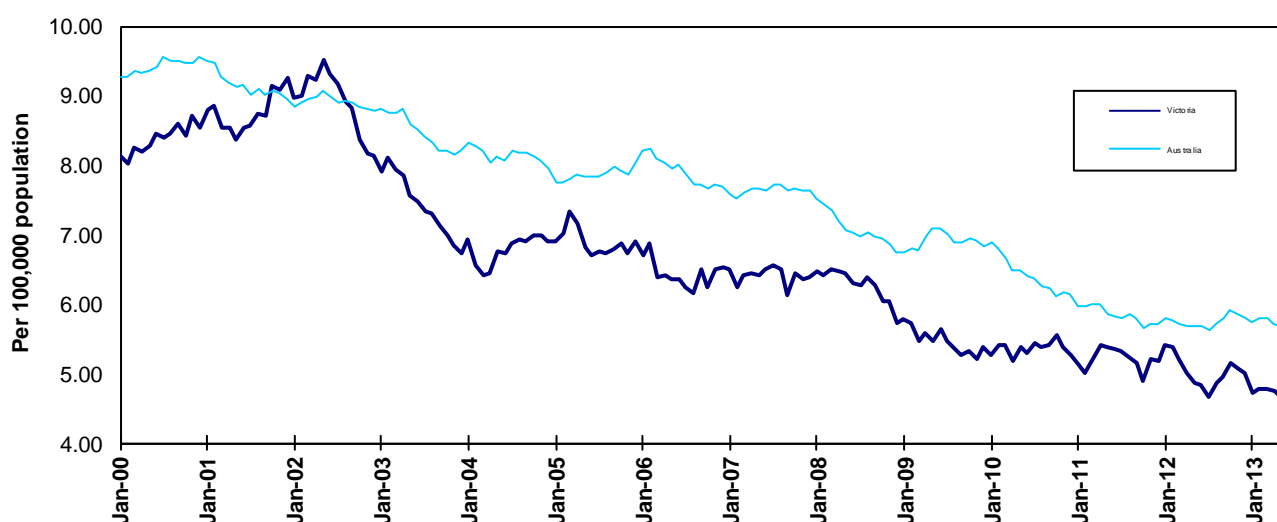
### BAC Fatalities (12 months to April 2010)

Category	2010	2009	2008	2010 v 2009		2010 v 2008		5 Year Av
<b>Melbourne Drivers and Riders</b>								
<0.05	55	63	63	(-8)	(-13%)	(-8)	(-13%)	62
[a] at 0.05 & above	21	17	25	(+4)	(+24%)	(-4)	(-16%)	21
% at 0.05 & above	(28%)	(21%)	(28%)					(+25%)
[b] >0.15	8	10	12	(-2)	(-20%)	(-4)	(-33%)	9
%>0.15	(11%)	(13%)	(14%)					(+11%)
[b] as a % of [a]	(38%)	(59%)	(48%)					(+43%)
BAC Unknown	5	3	1	(+2)	(+67%)	(+4)	(+400%)	3
<b>Country Drivers and Riders</b>								
<0.05	76	63	90	(+13)	(+21%)	(-14)	(-16%)	78
[a] at 0.05 & above	20	26	32	(-6)	(-23%)	(-12)	(-38%)	26
% at 0.05 & above	(21%)	(29%)	(26%)					(+25%)
[b] >0.15	13	17	20	(-4)	(-24%)	(-7)	(-35%)	17
%>0.15	(14%)	(19%)	(16%)					(+16%)
[b] as a % of [a]	(65%)	(65%)	(63%)					(+64%)
BAC Unknown	7	2	1	(+5)	(+250%)	(+6)	(+600%)	5
<b>Victorian Total Drivers and Riders</b>								
<0.05	131	126	153	(+5)	(+4%)	(-22)	(-14%)	140
[a] at 0.05 & above	41	43	57	(-2)	(-5%)	(-16)	(-28%)	47
% at 0.05 & above	(24%)	(25%)	(27%)					(+25%)
[b] >0.15	21	27	32	(-6)	(-22%)	(-11)	(-34%)	26
%>0.15	(12%)	(16%)	(15%)					(+14%)
[b] as a % of [a]	(51%)	(63%)	(56%)					(+54%)
BAC Unknown	12	5	2	(+7)	(+140%)	(+10)	(+500%)	7
<b>Victorian Total Pedestrians</b>								
<0.05	32	35	38	(-3)	(-9%)	(-6)	(-16%)	33
[a] at 0.05 & above	8	21	9	(-13)	(-62%)	(-1)	(-11%)	14
% at 0.05 & above	(20%)	(38%)	(19%)					(+30%)
[b] >0.15	3	10	8	(-7)	(-70%)	(-5)	(-63%)	9
%>0.15	(8%)	(18%)	(17%)					(+19%)
[b] as a % of [a]	(38%)	(48%)	(89%)					(+62%)
BAC Unknown	6	4	2	(+2)	(+50%)	(+4)	(+200%)	4

## The National Picture

State	Fatalities (12 months to June)					2013 v 2012	
	2013	2012	2011	2010			
NSW	353	386	355	445	-33	(-9%)	
VIC	256	269	294	288	-13	(-5%)	
QLD	297	278	251	269	+19	(+7%)	
SA	103	89	111	118	+14	(+16%)	
WA	182	178	197	184	+4	(+2%)	
TAS	33	19	31	44	+14	(+74%)	
NT	46	53	44	35	-7	(-13%)	
ACT	10	5	10	20	+5	(+100%)	
AUST TOTAL	1,282	1,277	1,293	1,403	+5	(+0%)	
AUST minus VIC	1,024	1,008	999	1,115	+16	(+2%)	

State	Fatalities per 10,000 registered vehicles (12 months to June)			Fatalities per 100,000 population (12 months to June)		
	2013	2012	2011	2013	2012	2011
NSW	0.71	0.79	0.74	4.82	5.32	4.95
VIC	0.59	0.63	0.70	4.52	4.82	5.34
QLD	0.83	0.80	0.74	6.45	6.18	5.64
SA	0.80	0.70	0.88	6.19	5.42	6.79
WA	0.89	0.90	1.04	7.37	7.48	8.48
TAS	0.74	0.44	0.74	6.44	3.71	6.08
NT	3.18	3.77	3.17	19.44	22.86	19.06
ACT	0.36	0.19	0.39	2.64	1.35	2.75
AUST TOTAL	0.75	0.76	0.79	5.64	5.69	5.83
AUST minus VIC	0.81	0.81	0.82	6.00	5.97	5.98



Victoria v Australia – 12 Month Moving Fatality Rate

## Booze-Bus Random Breath Testing

12 months to May 2013 (monthly totals)\*

	2012						2013					
	Jun	Jul	Aug	Sep	Oct	Nov	Dec	Jan	Feb	Mar	Apr	May
Melbourne	79,523	79,063	79,829	97,391	91,425	96,830	98,007	93,928	79,064	86,312	89,067	84,644
Country	7,285	3,932	7,314	4,599	10,101	16,705	13,751	7,046	7,258	8,046	9,786	8,335
Vic Total	86,808	82,995	87,143	101,990	101,526	113,535	111,758	100,974	86,322	94,358	98,853	92,979

12 months to May 2013 vs previous 12 months

	2013	2012	2011	2013 v 2012	2013 v 2011
Melbourne	1,062,075	958,953	1,016,549	+103122 (+11%)	+45526 (+4%)
Country	100,979	138,158	189,177	-37179 (-27%)	-88198 (-47%)
Vic Total	1,163,054	1,097,111	1,205,726	+65943 (+6%)	-42672 (-4%)

\*Due to police industrial action, reliable random breath testing data is not available from May to October 2011. For the rolling 12 month totals, 2010 data has been used as a substitute in the relevant months.

## Mobile Safety Camera Data

Speed Infringements Issued from Mobile Cameras (monthly totals)

Monthly Average = 42,032

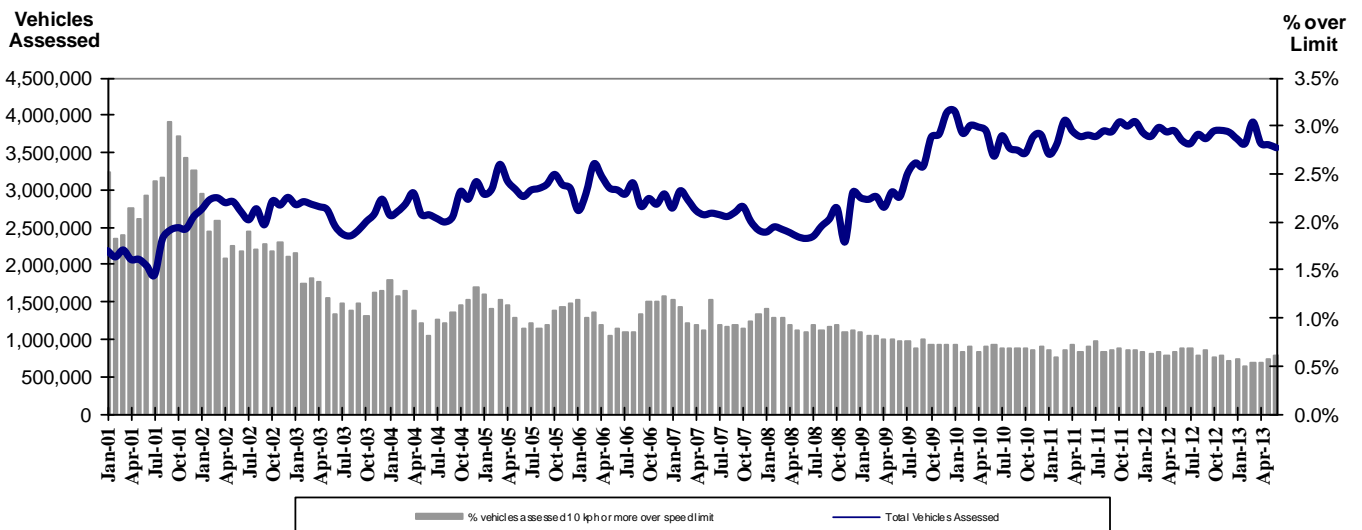
2012	2013										
	Jul	Aug	Sep	Oct	Nov	Dec	Jan	Feb	Mar	Apr	May
48,023	45,032	42,429	45,757	45,777	29,434	52,184	39,407	36,296	40,184	42,428	37,432

Excessive Speed Infringements (ESI) Issued from Mobile Cameras (monthly totals)

Monthly Average = 348

2012	2013										
	Jul	Aug	Sep	Oct	Nov	Dec	Jan	Feb	Mar	Apr	May
352	368	353	396	356	256	363	341	292	342	398	361

Notes: An ESI is defined as 25km/h over the speed limit except in a 110km/h zone where it is 20km/h over the limit.



Mobile Safety Cameras – Vehicles assessed and percentage of vehicles assessed 10km/h or more over speed limit per month



## Explanations and References

Hi-AlcTime is those times of the day and week (*shaded* in the table below) when casualty crashes are ten times more likely to involve alcohol than casualty crashes at other (Lo-AlcTime) times.

	12am - 6am	6am - 8am	8am - 10am	10am - 2pm	2pm - 4pm	4pm - 6pm	6pm - 12pm
Monday							
Tuesday							
Wednesday							
Thursday							
Friday							
Saturday							
Sunday							

Police Service Areas align with Local Government Areas. Most Police Service Areas are equivalent to a single Local Government Area, while the remainder comprise two or three Local Government Areas.

Police Service Area	Local Government Area(s)	Police Service Area	Local Government Area(s)
BALLARAT	BALLARAT, PYRENEES	MAROONDAH	MAROONDAH
BANYULE	BANYULE	MELBOURNE	MELBOURNE
BASS COAST	BASS COAST, SOUTH GIPPSLAND	MELTON	MELTON
BAW BAW	BAWBAW	MILDURA	MILDURA
BENALLA	BENALLA, MANSFIELD, MURRINDINDI	MITCHELL	MITCHELL, STRATHBOGIE
BENDIGO	GREATER BENDIGO	MONASH	MONASH
BOROONDARA	BOROONDARA	MOONEE VALLEY	MOONEE VALLEY
BRIMBANK	BRIMBANK	MOORABOOL	GOLDEN PLAINS, HEPBURN, MOORABOOL
CAMPASPE	CAMPASPE	MORELAND	MORELAND
CARDINIA	CARDINIA	MORNINGTON PENINSULA	MORNINGTON PENINSULA
CASEY	CASEY	NILLUMBIK	NILLUMBIK
CENTRAL GOLDFIELDS	CENTRAL GOLDFIELDS, LODDON	NORTHERN GRAMPIANS	ARARAT, NORTHERN GRAMPIANS, YARRIAMIACK
GREATER DANDENONG	GREATER DANDENONG	PORT PHILLIP	PORT PHILLIP
DAREBIN	DAREBIN	SHEPPARTON	GREATER SHEPPARTON
EAST GIPPSLAND	EAST GIPPSLAND	SOUTHERN GRAMPIANS	GLENELG, SOUTHERN GRAMPIANS
FRANKSTON	FRANKSTON	STONNINGTON	STONNINGTON
GEELONG	GREATER GEELONG, QUEENSCLIFF	SURFCOAST	SURFCOAST, COLAC OTWAY
GLENEIRA	GLENEIRA, BAYSIDE	SWANHILL	BULOKE, GANNAWARRA, SWAN HILL
HOBSONS BAY	HOBSONSBAY	WANGARATTA	ALPINE, MOIRA, WANGARATTA
HORSHAM	HINDMARSH, HORSHAM, WESTWIMMERA	WARRNAMBOOL	CORANGAMITE, MOYNE, WARRNAMBOOL
HUME	HUME	WELLINGTON	WELLINGTON
KINGSTON	KINGSTON	WHITEHORSE	WHITEHORSE
KNOX	KNOX	WHITTLESEA	WHITTLESEA
LATROBE	LATROBE	WODONGA	INDIGO, TOWONG, WODONGA
MACEDON RANGES	MOUNT ALEXANDER, MACEDON RANGES	WYNDHAM	WYNDHAM
MANNINGHAM	MANNINGHAM	YARRA	YARRA
MARIBYRNONG	MARIBYRNONG	YARRA RANGES	YARRA RANGES

## Useful Internet Sites

### TAC Sites

- TAC Safety (Road Safety) [www.tacsafety.com.au](http://www.tacsafety.com.au)
- TAC How safe is your car [www.howsafeisyourcar.com.au](http://www.howsafeisyourcar.com.au)
- TAC Learners Log [www.learnerslog.com.au](http://www.learnerslog.com.au)
- TAC Motorcycle Safety Website [www.spokes.com.au](http://www.spokes.com.au)
- TAC Corporate site [www.tac.vic.gov.au](http://www.tac.vic.gov.au)

### Victorian Sites:

- VicRoads [www.vicroads.vic.gov.au](http://www.vicroads.vic.gov.au)
- Victoria Police [www.police.vic.gov.au](http://www.police.vic.gov.au)
- Parliamentary Road Safety Committee [www.parliament.vic.gov.au/rsc/](http://www.parliament.vic.gov.au/rsc/)
- ARRB Transport Research [www.arrb.com.au](http://www.arrb.com.au)
- RACV [www.racv.com.au](http://www.racv.com.au)
- Monash University Accident Research Centre [www.monash.edu.au/muarc](http://www.monash.edu.au/muarc)
- Roadsafe [www.roadsafe.org.au](http://www.roadsafe.org.au)
- Cameras Save Lives [www.camerassavelives.vic.gov.au](http://www.camerassavelives.vic.gov.au)

### National and Interstate Sites:

- Australian Transport Safety Bureau [www.atsb.gov.au](http://www.atsb.gov.au)
- Roads and Traffic Authority (NSW) [www.rta.nsw.gov.au](http://www.rta.nsw.gov.au)
- Queensland Transport - Road Safety [transport.qld.gov.au/Home/Safety/Road](http://transport.qld.gov.au/Home/Safety/Road)
- Department of Transport (SA) [www.transport.sa.gov.au/index.htm](http://www.transport.sa.gov.au/index.htm)
- Main Roads Western Australia - Road Safety [www.mrwa.wa.gov.au](http://www.mrwa.wa.gov.au)

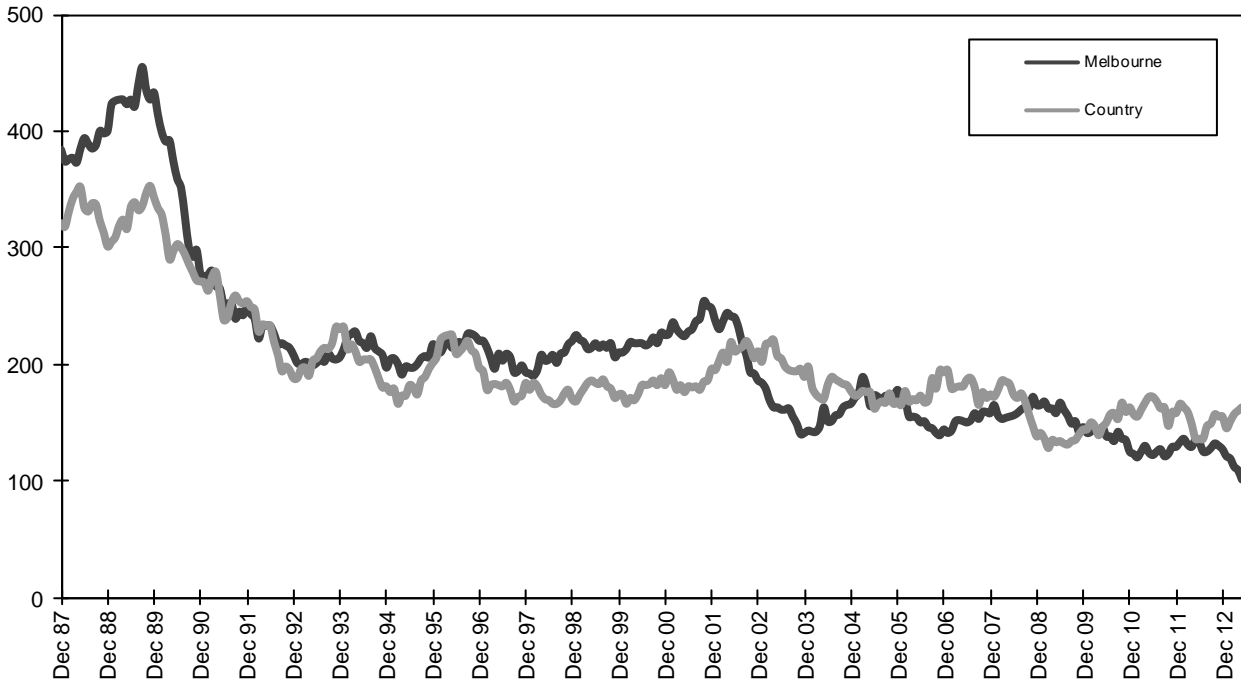
### International Sites:

- National Highway Traffic Safety Admin (USA) [www.nhtsa.dot.gov](http://www.nhtsa.dot.gov)
- Swedish Road and Transport Institute (VTI) [www.vti.se](http://www.vti.se)
- SWOV Institute for Road Safety Research [www.swov.nl](http://www.swov.nl)

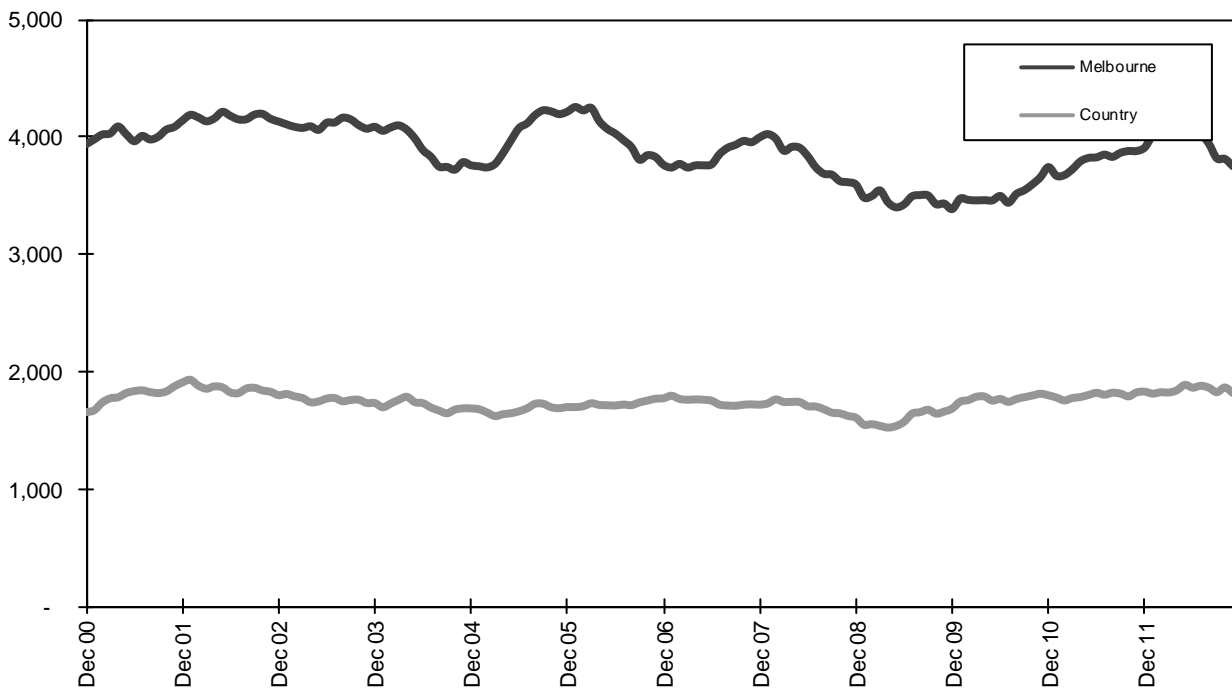
### Related Sites:

- Australian Drug Foundation [www.adf.org.au](http://www.adf.org.au)
- Amy Gillett Foundation [www.amygillett.org.au](http://www.amygillett.org.au)

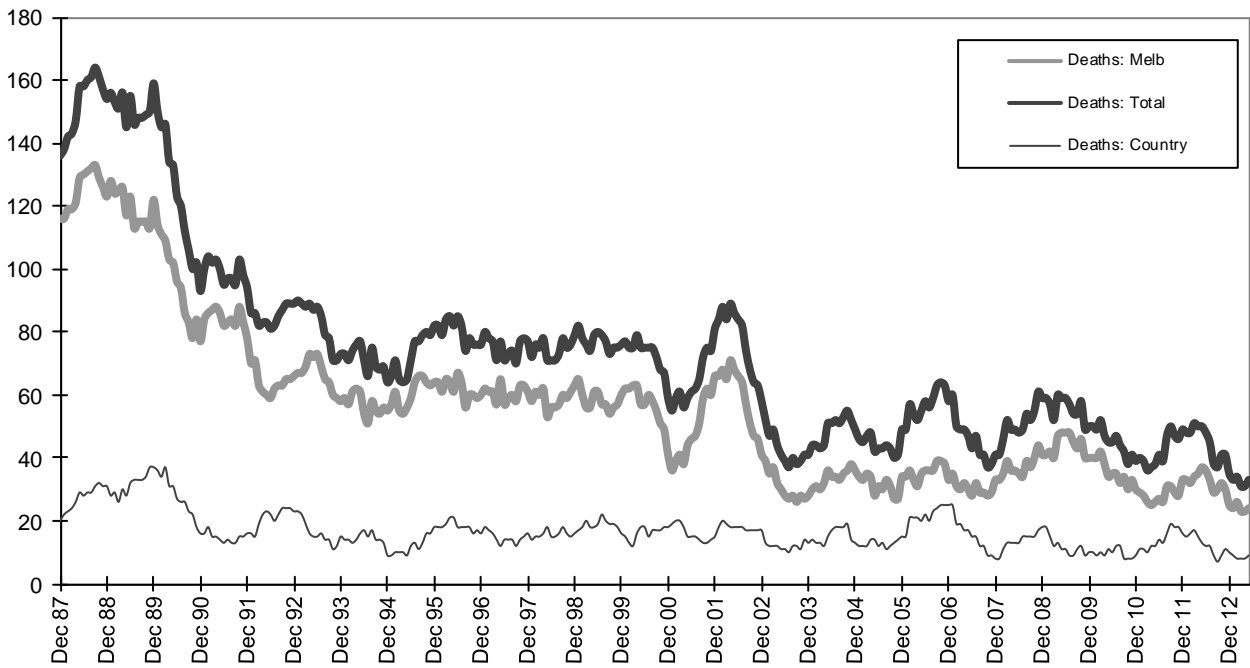
Figures



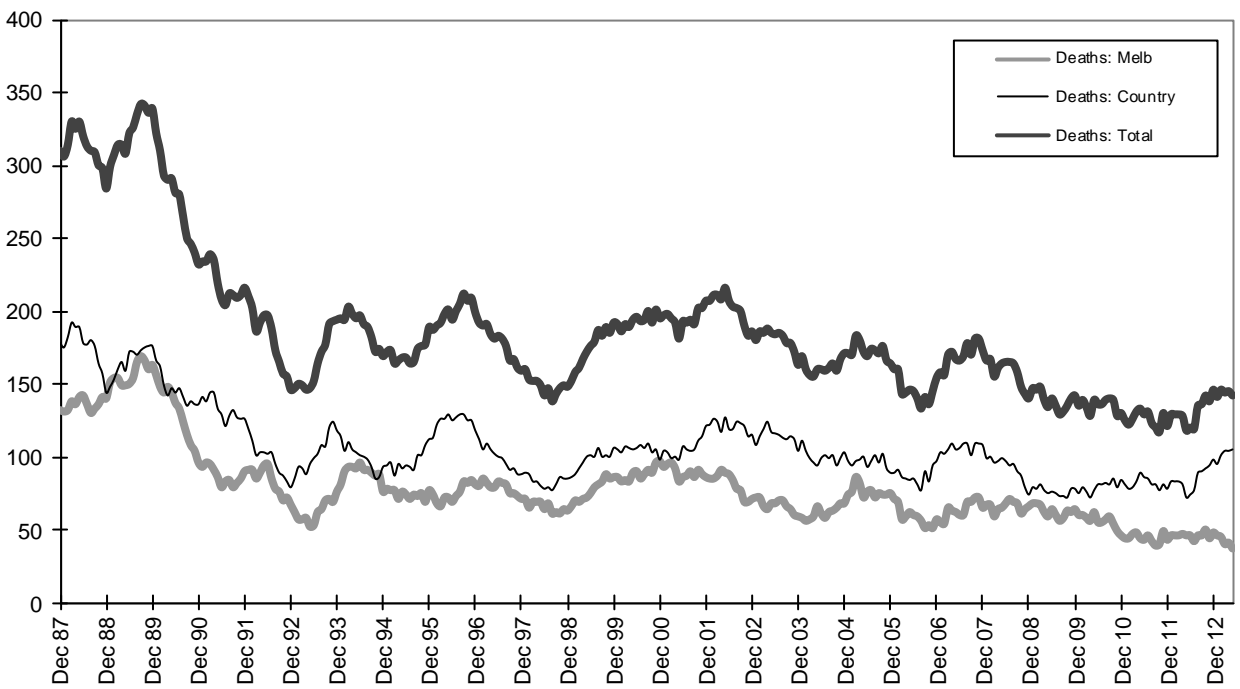
Graph 1a - Melbourne/country fatalities



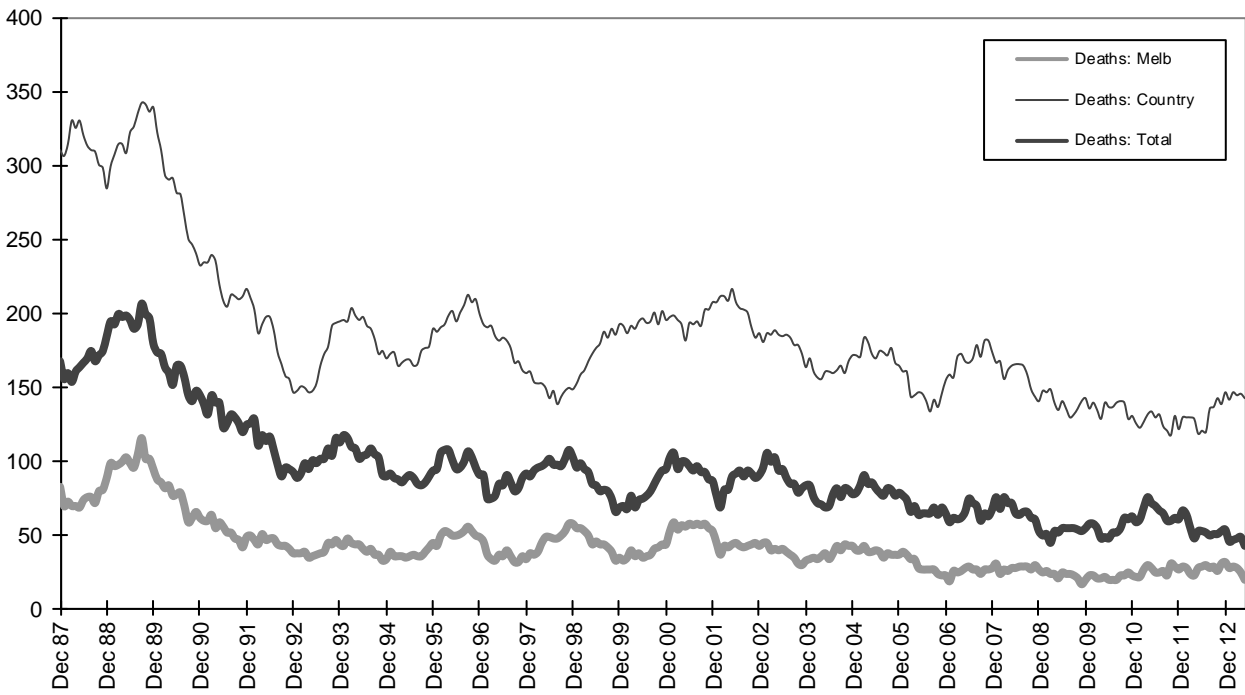
Graph 1b - Melbourne/country Claims involving an acute hospital admission



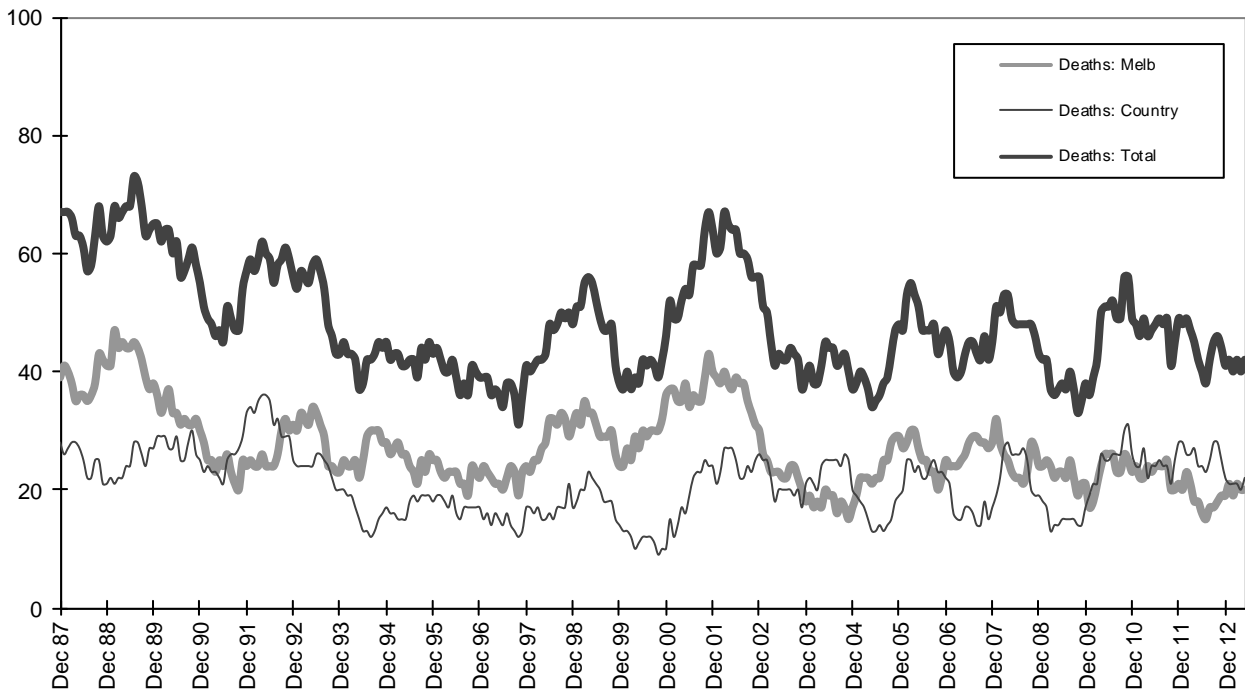
Graph 2a - Pedestrian fatalities (Melbourne/country)



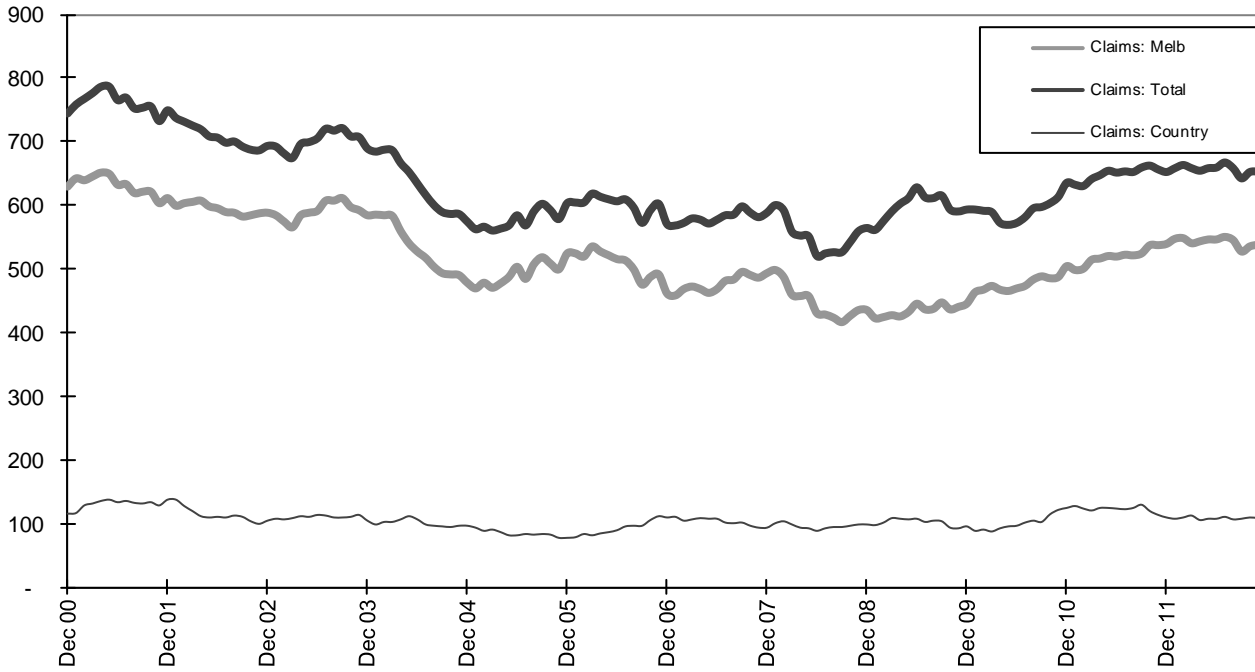
Graph 2b - Driver fatalities (Melbourne/country)



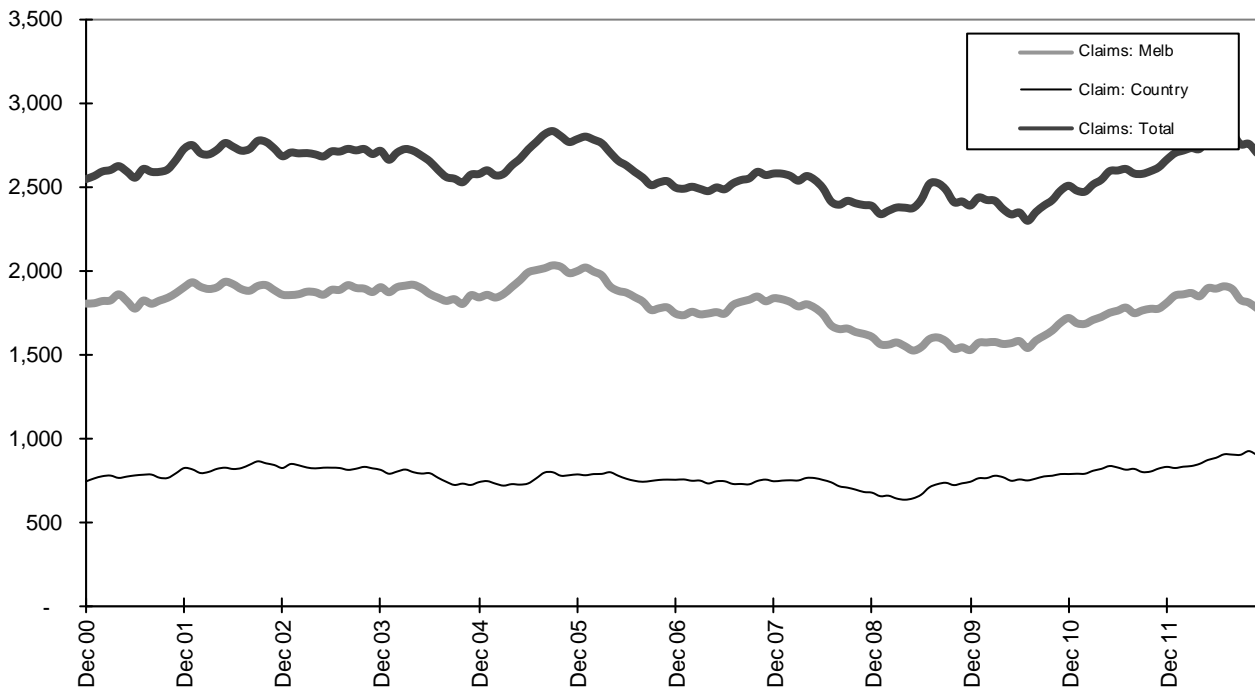
Graph 2c - Passenger fatalities (Melbourne/country)



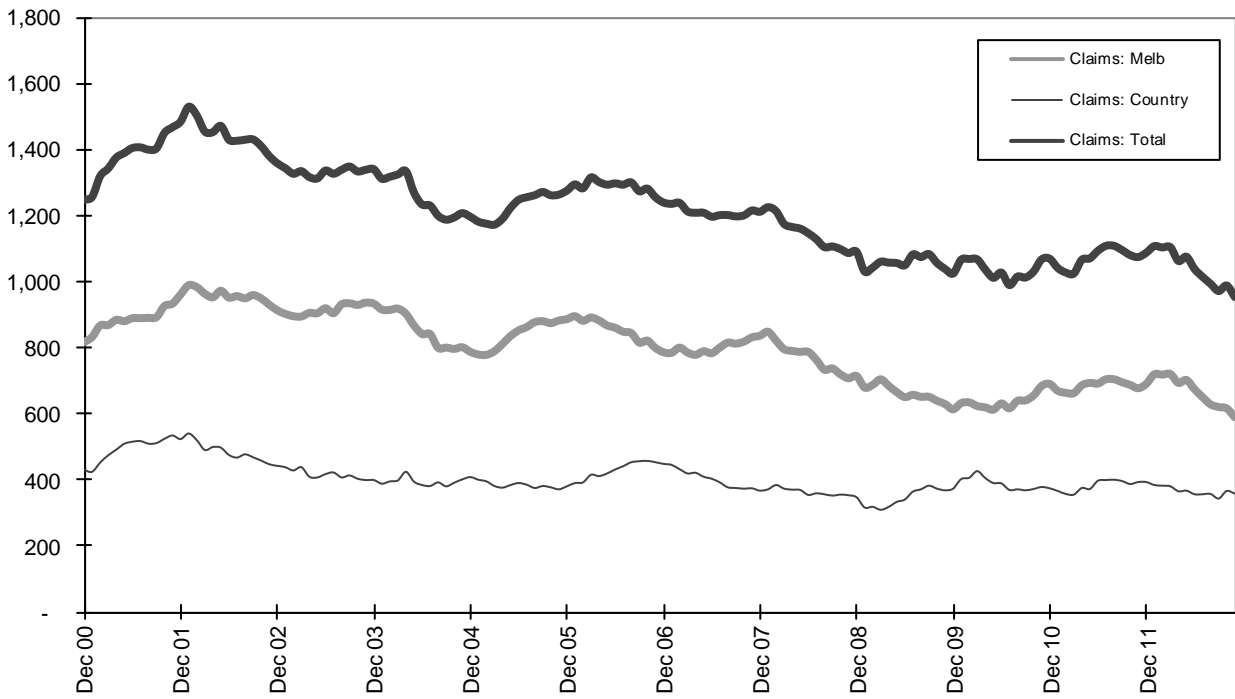
Graph 2d - Motorcyclist fatalities (Melbourne/country)



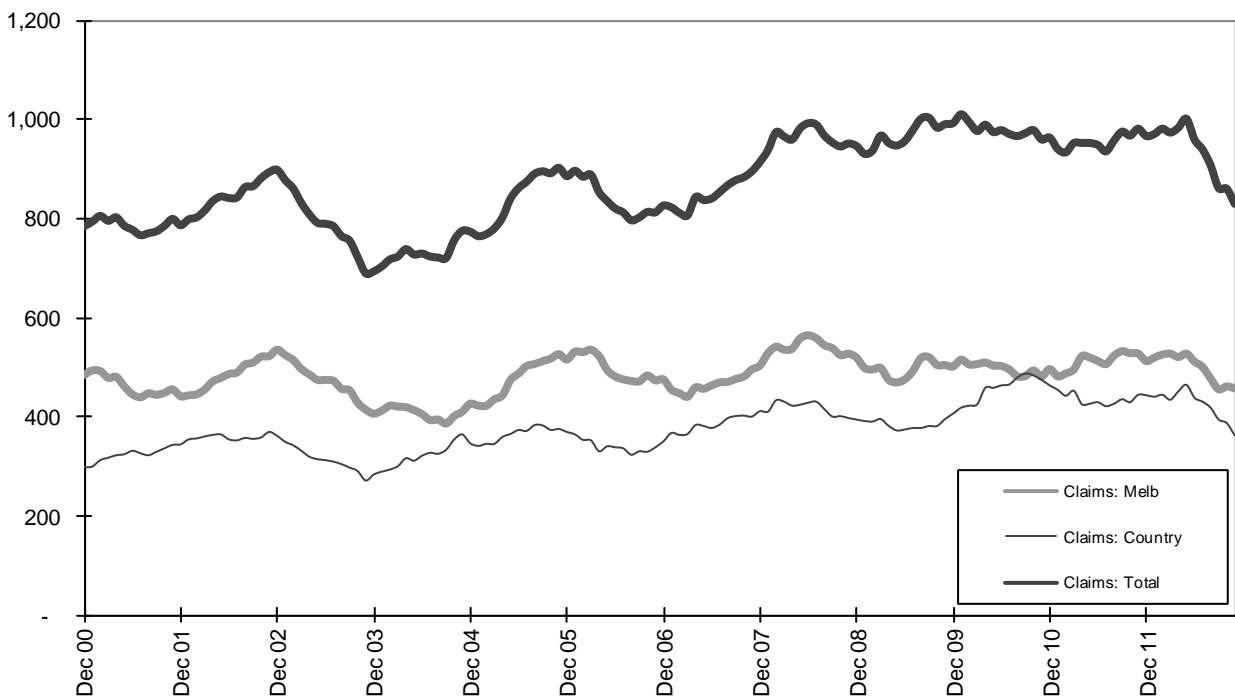
Graph 3a - Pedestrian Claims involving an acute hospital admission (Melbourne/country)



Graph 3b - Driver Claims involving an acute hospital admission (Melbourne/country)



Graph 3c - Passenger Claims involving an acute hospital admission (Melbourne/country)



Graph 3d - Motorcyclist Claims involving an acute hospital admission (Melbourne/country)