



ROAD SAFETY MONTHLY SUMMARY JUNE 2009



TRANSPORT
ACCIDENT
COMMISSION

60 Brougham Street
Geelong Vic 3220
PO Box 742
Geelong Vic 3220
Ausdoc DX 216079 Geelong

Telephone 1300 654 329
STD Toll Free 1800 332 556
Fax: 03 9656 9300
www.tac.vic.gov.au
ABN 22 033 947 623



Contents

Status Report _____	3
Road Toll (updated snapshot)	
Overview	
Tables _____	4-9
Fatalities (year to date and rolling 12 month)	
Serious Injuries (rolling 12 month)	
Overview	
Sex	
Roaduser	
Location	
Age Group	
Alctime	
Police District	
Accident Type	
Victorian Road Deaths – monthly totals since 1951 _____	10
Fatalities by Week (2004 to 2009) _____	11
Alcohol Related Deaths _____	12-13
The National Picture _____	14
Police Enforcement _____	15
Explanations and References _____	16
Alcohol times (“Alctime”) explained	
Useful internet sites	
Graphs (12 month moving totals) _____	17-24

Status Report

Road Toll (to midnight 26 July 2009)

- The road toll stands at 182 for the year, 3% more than at the same time in 2008 (177).
- 21 people died in May and 32 in June on Victorian roads. This compares to 25 and 20 in May and June in 2008.

* Due to a change in coding of accident injury severity following the introduction of the new crash data system by Victoria Police, it is not possible to compare serious injury data from 2006 onwards with previous years' data, as a discontinuity in the data series has been introduced with the introduction of a new reporting system on 1 January 2006.

Category	2009	2008	2007	2009 v 2008	2009 v 2007	5 Year Av
Casualties (Rolling 12 Month Total)						
Fatal (to June)	310	330	337	-20	(-6%)	327
per 10,000 veh	0.78	0.85	0.89	-0.07	(-8%)	0.88
per 100,000 pop	5.80	6.28	6.55	-0.48	(-8%)	6.48
Accidents (Rolling 12 Month Total)						
Fatal (to June)	279	292	304	-13	(-4%)	294
per 10,000 veh	0.70	0.75	0.80	-0.05	(-7%)	0.80
per 100,000 pop	5.22	5.56	5.90	-0.34	(-6%)	5.85

Category	2009	2008	2007	2009 v 2008	2009 v 2007	3 Year Av
Casualties (Rolling 12 Month Total)						
*Serious (to March)	6,747	7,694	7,342	-947	(-12%)	7,261
per 10,000 veh	17.0	19.9	19.4	-2.9	(-15%)	18.3
per 100,000 pop	126.8	147.2	143.4	-20.4	(-14%)	136.5
Accidents (Rolling 12 Month Total)						
*Serious (to March)	5,639	6,255	5,904	-616	(-10%)	5,933
per 10,000 veh	14.2	16.2	15.6	-2	(-12%)	14.9
per 100,000 pop	106.0	119.6	115.3	-13.6	(-11%)	111.5

Note: Data is subject to revision as additional information about known accidents is received, and as new accident reports are received and processed.

Fatalities: January - June

Category	2009	2008	2007	2009 v 2008	2009 v 2007	5 Year Av
Overview						
Fatalities	162	155	157	7	5	162
Accidents	141	140	137	1	4	144
Sex						
Male	110	108	112	2	-2	114
Female	51	47	45	4	6	48
Roaduser						
Bicyclist	3	1	2	2	1	4
Driver	78	72	80	6	-2	77
Motorcyclist	18	23	20	-5	-2	21
Passenger	36	34	37	2	-1	35
Pedestrian	27	25	18	2	9	25
Location						
Melbourne	80	75	76	5	4	79
Rural Victoria	82	80	81	2	1	83
Agegroup						
0-4	5	3	3	2	2	3
5-15	7	5	9	2	-2	6
16-17	4	5	4	-1	0	5
18-20	27	12	23	15	4	18
21-25	13	26	17	-13	-4	19
26-29	8	9	14	-1	-6	12
30-39	21	22	22	-1	-1	27
40-49	25	23	18	2	7	22
50-59	20	16	14	4	6	15
60-69	10	8	17	2	-7	13
70+	21	26	16	-5	5	23
Unknown	1	0	0	1	1	0
Alctime						
High (Melb)	38	37	42	1	-4	42
High (Rural)	37	39	34	-2	3	40
High (Vic)	75	76	76	-1	-1	82
Low (Melb)	42	38	34	4	8	38
Low (Rural)	45	41	47	4	-2	43
Low (Vic)	87	79	81	8	6	80
Unknown	0	0	0	0	0	0

Fatalities: January - June

Category	2009	2008	2007	2009 v 2008	2009 v 2007	5 Year Av
Police Region and Division						
Region 1	6	12	16	-6	-10	12
1-1 Melbourne	2	5	7	-3	-5	4
1-2 Prahran	0	0	5	0	-5	2
1-3 Caulfield	2	1	2	1	0	1
1-4 Moorabbin	2	6	2	-4	0	4
Region 2	39	33	30	6	9	37
2-1 Altona North	10	9	8	1	2	9
2-2 Geelong	8	9	8	-1	0	8
2-3 Ballarat	5	9	4	-4	1	7
2-4 Horsham	4	2	0	2	4	3
2-5 Warrnambool	12	4	10	8	2	10
Region 3	36	33	48	3	-12	39
3-1 Mill Park	9	6	6	3	3	7
3-2 Broadmeadows	6	5	8	1	-2	7
3-3 Bendigo	5	9	8	-4	-3	7
3-4 Shepparton	15	6	8	9	7	11
3-5 Mildura	1	7	18	-6	-17	7
Region 4	33	34	30	-1	3	34
4-1 Rosanna	6	1	4	5	2	4
4-2 Nunawading	4	4	6	0	-2	5
4-3 Knox	13	11	10	2	3	12
4-4 Seymour	7	12	5	-5	2	9
4-5 Wangaratta	3	6	5	-3	-2	4
Region 5	48	43	33	5	15	40
5-1 Frankston	9	13	3	-4	6	9
5-2 Dandenong	17	13	12	4	5	14
5-3 Morwell	9	6	11	3	-2	9
5-4 Bairnsdale	13	11	7	2	6	8
Accident Type						
Intersection						
Adjacent direction	9	16	12	-7	-3	14
Opposing direction	2	5	7	-3	-5	5
Other						
Head on	22	21	24	1	-2	23
Same direction	7	9	12	-2	-5	9
Manoeuvre/o'taking	12	4	7	8	5	7
On path	0	2	1	-2	-1	2
Single vehicle	76	64	61	12	15	67
Other (incl peds)	34	34	33	0	1	34

Fatalities: 12 months to June

Category	08/09	07/08	06/07	08/09 v 07/08	08/09 v 06/07	5 Year Av
Overview						
Fatalities	310	330	337	-20 (-6%)	-27 (-8%)	327
Accidents	279	292	304	-13 (-4%)	-25 (-8%)	294
Sex						
Male	213	239	239	-26 (-11%)	-26 (-11%)	233
Female	96	91	98	5 (5%)	-2 (-2%)	94
Roaduser						
Bicyclist	11	5	9	6 (120%)	2 (22%)	8
Driver	146	165	166	-19 (-12%)	-20 (-12%)	158
Motorcyclist	38	48	45	-10 (-21%)	-7 (-16%)	43
Passenger	54	64	74	-10 (-16%)	-20 (-27%)	67
Pedestrian	61	48	43	13 (27%)	18 (42%)	51
Location						
Melbourne	171	157	150	14 (9%)	21 (14%)	160
Rural Victoria	139	173	187	-34 (-20%)	-48 (-26%)	167
Agegroup						
0-4	7	3	5	4 (133%)	2 (40%)	4
5-15	8	7	12	1 (14%)	-4 (-33%)	9
16-17	10	11	13	-1 (-9%)	-3 (-23%)	11
18-20	43	28	41	15 (54%)	2 (5%)	36
21-25	31	51	37	-20 (-39%)	-6 (-16%)	42
26-29	21	24	33	-3 (-13%)	-12 (-36%)	25
30-39	45	54	47	-9 (-17%)	-2 (-4%)	54
40-49	45	45	42	0 (0%)	3 (7%)	42
50-59	36	41	36	-5 (-12%)	0 (0%)	34
60-69	19	19	28	0 (0%)	-9 (-32%)	23
70+	44	47	43	-3 (-6%)	1 (2%)	45
Unknown	1	0	0	1	1	0
Altime						
High (Melb)	82	79	89	3 (4%)	-7 (-8%)	87
High (Rural)	67	79	88	-12 (-15%)	-21 (-24%)	83
High (Vic)	149	158	177	-9 (-6%)	-28 (-16%)	170
Low (Melb)	89	78	61	11 (14%)	28 (46%)	73
Low (Rural)	72	94	99	-22 (-23%)	-27 (-27%)	84
Low (Vic)	161	172	160	-11 (-6%)	1 (1%)	157
Unknown	0	0	0	0	0	0

Fatalities: 12 months to June

Category	08/09	07/08	06/07	08/09 v 07/08	08/09 v 06/07	5 Year Av
Police Region and Division						
Region 1	22	27	31	-5	(-19%)	25
1-1 Melbourne	6	8	10	-2	(-25%)	7
1-2 Prahran	3	3	8	0	(0%)	5
1-3 Caulfield	6	5	7	1	(20%)	6
1-4 Moorabbin	7	11	6	-4	(-36%)	8
Region 2	72	71	71	1	(1%)	78
2-1 Altona North	19	26	12	-7	(-27%)	19
2-2 Geelong	18	11	16	7	(64%)	16
2-3 Ballarat	13	16	13	-3	(-19%)	15
2-4 Horsham	7	5	9	2	(40%)	9
2-5 Warrnambool	15	13	21	2	(15%)	19
Region 3	70	75	87	-5	(-7%)	77
3-1 Mill Park	13	9	9	4	(44%)	11
3-2 Broadmeadows	19	13	15	6	(46%)	15
3-3 Bendigo	12	20	17	-8	(-40%)	16
3-4 Shepparton	20	19	15	1	(5%)	19
3-5 Mildura	6	14	31	-8	(-57%)	15
Region 4	60	70	68	-10	(-14%)	66
4-1 Rosanna	10	1	10	9	(900%)	7
4-2 Nunawading	13	14	9	-1	(-7%)	13
4-3 Knox	19	20	19	-1	(-5%)	20
4-4 Seymour	15	22	17	-7	(-32%)	17
4-5 Wangaratta	3	13	13	-10	(-77%)	10
Region 5	86	87	80	-1	(-1%)	81
5-1 Frankston	21	22	10	-1	(-5%)	17
5-2 Dandenong	28	25	30	3	(12%)	28
5-3 Morwell	16	18	25	-2	(-11%)	19
5-4 Bairnsdale	21	22	15	-1	(-5%)	17
Accident Type						
Intersection						
Adjacent direction	17	32	33	-15	(-47%)	30
Opposing direction	4	11	13	-7	(-64%)	11
Other						
Head on	38	40	46	-2	(-5%)	45
Same direction	15	16	21	-1	(-6%)	17
Manoeuvre/o'taking	25	10	12	15	(150%)	16
On path	4	7	5	-3	(-43%)	7
Single vehicle	136	151	142	-15	(-10%)	138
Other (incl peds)	71	63	65	8	(13%)	65

Serious injuries: 12 months to March

Due to a change in coding of accident injury severity following the introduction of the new crash data system by Victoria Police, it is not possible to compare serious injury data from 2006 onwards with previous years' data, as a discontinuity in the data series has been introduced with the introduction of a new reporting system on 1 Jan 2006.

Category	08/09	07/08	06/07	08/09 v 07/08	08/09 v 06/07	3 Year Av
Overview						
Casualties	6,747	7,694	7,342	-947 (-12%)	-595 (-8%)	7,261
Accidents	5,639	6,255	5,904	-616 (-10%)	-265 (-4%)	5,933
Sex						
Male	3,963	4,478	4,057	-515 (-12%)	-94 (-2%)	4,166
Female	2,740	3,160	3,125	-420 (-13%)	-385 (-12%)	3,008
Unknown	44	56	160	-12 (-21%)	-116 (-73%)	87
Roaduser						
Bicyclist	475	513	460	-38 (-7%)	15 (3%)	483
Driver	3,098	3,679	3,610	-581 (-16%)	-512 (-14%)	3,462
Motorcyclist	1,074	1,093	894	-19 (-2%)	180 (20%)	1,020
Passenger	1,368	1,654	1,622	-286 (-17%)	-254 (-16%)	1,548
Pedestrian	728	753	737	-25 (-3%)	-9 (-1%)	739
Unknown	4	2	19	2	-15	8
Location						
Melbourne	4,794	5,450	5,180	-656 (-12%)	-386 (-7%)	5,141
Rural Victoria	1,891	2,181	2,144	-290 (-13%)	-253 (-12%)	2,072
Unknown	62	63	18	-1	44	48
Agegroup						
0-4	61	78	67	-17 (-22%)	-6 (-9%)	69
5-15	274	366	372	-92 (-25%)	-98 (-26%)	337
16-17	183	248	261	-65 (-26%)	-78 (-30%)	231
18-20	774	885	804	-111 (-13%)	-30 (-4%)	821
21-25	891	1,063	979	-172 (-16%)	-88 (-9%)	978
26-29	565	634	583	-69 (-11%)	-18 (-3%)	594
30-39	1,154	1,333	1,260	-179 (-13%)	-106 (-8%)	1,249
40-49	974	1,063	996	-89 (-8%)	-22 (-2%)	1,011
50-59	702	805	695	-103 (-13%)	7 (1%)	734
60-69	514	498	416	16 (3%)	98 (24%)	476
70+	569	590	519	-21 (-4%)	50 (10%)	559
Unknown	86	131	390	-45 (-34%)	-304 (-78%)	202
Altime						
High (Melb)	2,296	2,484	2,479	-188 (-8%)	-183 (-7%)	2,420
High (Rural)	843	980	920	-137 (-14%)	-77 (-8%)	914
High (Vic)	3,139	3,464	3,399	-325 (-9%)	-260 (-8%)	3,334
Low (Melb)	2,498	2,966	2,701	-468 (-16%)	-203 (-8%)	2,722
Low (Rural)	1,048	1,201	1,224	-153 (-13%)	-176 (-14%)	1,158
Low (Vic)	3,546	4,167	3,925	-621 (-15%)	-379 (-10%)	3,879
Unknown	62	63	18	-1	44	48

Serious injuries: 12 months to March

Due to a change in coding of accident injury severity following the introduction of the new crash data system by Victoria Police, it is not possible to compare serious injury data from 2006 onwards with previous years' data, as a discontinuity in the data series has been introduced with the introduction of a new reporting system on 1 Jan 2006.

Category	08/09	07/08	06/07	08/09 v 07/08	08/09 v 06/07	3 Year Av		
Police Region and Division								
Region 1	1,280	1,220	1,219	60	(5%)	61	(5%)	1,240
1-1 Melbourne	418	344	349	74	(22%)	69	(20%)	370
1-2 Prahran	272	247	236	25	(10%)	36	(15%)	252
1-3 Caulfield	301	330	305	-29	(-9%)	-4	(-1%)	312
1-4 Moorabbin	289	299	329	-10	(-3%)	-40	(-12%)	306
Region 2	1,409	1,563	1,471	-154	(-10%)	-62	(-4%)	1,481
2-1 Altona North	555	526	495	29	(6%)	60	(12%)	525
2-2 Geelong	407	501	430	-94	(-19%)	-23	(-5%)	446
2-3 Ballarat	239	282	267	-43	(-15%)	-28	(-10%)	263
2-4 Horsham	77	88	101	-11	(-13%)	-24	(-24%)	89
2-5 Warrnambool	131	166	178	-35	(-21%)	-47	(-26%)	158
Region 3	1,204	1,372	1,379	-168	(-12%)	-175	(-13%)	1,318
3-1 Mill Park	225	329	312	-104	(-32%)	-87	(-28%)	289
3-2 Broadmeadows	466	499	508	-33	(-7%)	-42	(-8%)	491
3-3 Bendigo	222	204	217	18	(9%)	5	(2%)	214
3-4 Shepparton	182	195	215	-13	(-7%)	-33	(-15%)	197
3-5 Mildura	109	145	127	-36	(-25%)	-18	(-14%)	127
Region 4	1,405	1,758	1,728	-353	(-20%)	-323	(-19%)	1,630
4-1 Rosanna	217	237	256	-20	(-8%)	-39	(-15%)	237
4-2 Nunawading	474	632	620	-158	(-25%)	-146	(-24%)	575
4-3 Knox	428	551	493	-123	(-22%)	-65	(-13%)	491
4-4 Seymour	147	183	220	-36	(-20%)	-73	(-33%)	183
4-5 Wangaratta	139	155	139	-16	(-10%)	0	(0%)	144
Region 5	1,387	1,718	1,527	-331	(-19%)	-140	(-9%)	1,544
5-1 Frankston	413	400	385	13	(3%)	28	(7%)	399
5-2 Dandenong	602	862	750	-260	(-30%)	-148	(-20%)	738
5-3 Morwell	238	302	249	-64	(-21%)	-11	(-4%)	263
5-4 Bairnsdale	134	154	143	-20	(-13%)	-9	(-6%)	144
Unknown	62	63	18	-1		44		48
Accident Type								
Intersection								
Adjacent direction	1,015	1,213	1,178	-198	(-16%)	-163	(-14%)	1,135
Opposing direction	664	777	713	-113	(-15%)	-49	(-7%)	718
Other								
Head on	386	467	463	-81	(-17%)	-77	(-17%)	439
Same direction	960	1,164	1,106	-204	(-18%)	-146	(-13%)	1,077
Manoeuvre/o'taking	458	437	450	21	(5%)	8	(2%)	448
On path	334	359	306	-25	(-7%)	28	(9%)	333
Single vehicle	2,133	2,428	2,325	-295	(-12%)	-192	(-8%)	2,295
Other (incl peds)	797	849	801	-52	(-6%)	-4	(-0%)	816

Victorian Road Deaths: monthly totals since 1951

Year	Jan	Feb	Mar	Apr	May	Jun	Jul	Aug	Sep	Oct	Nov	Dec	Totals
1951							61	59	52	38	29	41	
1952	45	40	54	61	54	69	67	55	44	44	31	20	584
1953	23	28	54	58	49	42	50	37	44	27	36	32	480
1954	44	42	28	60	55	36	63	33	25	52	30	41	509
1955	44	36	45	55	48	56	64	44	44	32	40	40	548
1956	34	48	51	67	53	65	71	47	39	39	44	48	606
1957	50	41	46	58	52	54	57	53	51	46	32	49	589
1958	50	38	42	58	54	41	54	53	57	40	57	52	596
1959	50	57	61	50	75	55	42	48	52	55	63	63	671
1960	49	53	57	76	70	70	67	62	61	77	52	66	760
1961	63	57	68	74	58	68	78	82	59	62	60	65	794
1962	65	41	76	78	72	80	70	77	62	53	64	70	808
1963	67	56	65	85	66	68	77	55	55	58	61	67	780
1964	73	71	78	71	83	89	80	89	67	66	62	75	904
1965	63	64	86	88	80	87	79	69	81	77	68	87	929
1966	75	59	75	103	74	86	87	80	75	66	90	85	955
1967	61	79	91	97	81	71	59	67	70	68	60	83	887
1968	70	78	86	78	73	76	73	77	72	80	81	105	949
1969	79	68	79	87	86	77	87	83	87	83	94	101	1,011
1970	85	84	106	80	87	88	110	106	78	95	68	74	1,061
1971	83	75	77	68	76	86	85	72	78	73	74	76	923
1972	61	62	75	82	75	71	98	85	83	62	80	81	915
1973	75	75	95	85	64	66	61	85	89	88	66	86	935
1974	56	62	81	60	70	73	67	62	53	70	80	72	806
1975	67	65	87	73	97	94	57	75	69	66	71	89	910
1976	79	78	88	78	69	79	60	70	82	78	77	100	938
1977	65	71	89	79	65	79	70	91	68	74	96	107	954
1978	75	54	95	63	64	69	68	77	65	84	83	72	869
1979	63	60	86	75	45	64	66	75	69	79	72	93	847
1980	48	55	66	59	47	56	60	53	45	58	61	49	657
1981	69	60	58	61	74	65	61	63	68	71	59	57	766
1982	55	53	59	59	67	45	47	71	53	69	65	66	709
1983	42	59	53	63	62	61	65	51	59	43	54	52	664
1984	65	48	58	50	56	48	46	50	71	53	55	58	658
1985	56	47	50	65	75	50	51	50	58	61	56	64	683
1986	56	50	70	69	59	53	42	54	54	52	59	51	669
1987	62	43	57	52	63	59	62	49	62	61	55	80	705
1988	49	58	69	54	79	50	54	52	64	59	43	70	701
1989	76	65	80	59	67	73	52	65	82	50	41	66	776
1990	48	44	55	39	56	64	41	34	48	35	40	44	548
1991	45	39	70	30	34	29	44	47	41	36	35	53	503
1992	34	33	34	47	33	29	23	27	28	38	30	40	396
1993	27	40	37	39	44	33	33	27	34	39	43	40	436
1994	36	31	44	35	27	33	29	37	17	27	32	30	378
1995	38	35	26	33	34	41	27	34	34	32	38	46	418
1996	40	47	35	38	28	29	30	35	49	24	33	30	418
1997	36	25	30	30	40	22	39	26	26	29	39	35	377
1998	29	29	32	36	31	22	40	19	37	36	49	30	390
1999	32	31	35	35	34	24	35	26	28	38	29	37	384
2000	32	26	46	32	39	32	33	29	36	29	44	29	407
2001	44	30	31	32	31	41	34	37	35	51	41	37	444
2002	32	31	45	31	45	32	27	25	31	30	31	37	397
2003	21	41	36	28	31	28	20	23	23	24	24	31	330
2004	32	22	30	30	46	28	27	26	22	28	25	27	343
2005	33	27	47	21	29	23	30	25	25	33	17	36	346
2006	24	37	23	23	27	23	25	22	43	20	31	39	337
2007	23	23	32	25	26	28	28	20	23	37	26	41	332
2008	28	20	37	25	25	20	27	27	18	25	26	25	303
2009	31	20	25	33	21	32							162
Ave	51	48	58	57	56	54	54	53	53	52	52	58	641
Max	85	84	106	103	97	94	110	106	89	95	96	107	1,061
Min	21	20	23	21	21	20	20	19	17	20	17	20	303

Fatalities by Week (2004 to 2009)

Week Ending	2004	2005	2006	2007	2008	2009	Cumulative 2009	% Change 2009-2008	12 Month Moving Total
4-Jan	5	4	5	4	4	4	4	0%	303
11-Jan	6	7	2	1	8	11	15	25%	306
18-Jan	8	3	4	7	4	6	21	31%	308
25-Jan	7	15	13	5	3	2	23	21%	307
1-Feb	7	6	5	6	9	8	31	11%	306
8-Feb	3	4	7	6	3	5	36	16%	308
15-Feb	7	4	17	4	5	8	44	22%	311
22-Feb	7	6	8	13	4	4	48	20%	311
1-Mar	4	11	3	14	9	3	51	4%	305
8-Mar	6	6	6	5	8	3	54	-5%	300
15-Mar	8	6	3	3	10	7	61	-9%	297
22-Mar	7	14	10	8	6	4	65	-11%	295
29-Mar	7	14	2	6	9	8	73	-11%	294
5-Apr	6	9	4	8	10	8	81	-12%	292
12-Apr	5	4	3	5	3	4	85	-11%	293
19-Apr	6	6	7	4	6	9	94	-7%	296
26-Apr	11	6	9	6	7	11	105	-3%	300
3-May	9	7	11	5	6	8	113	-1%	302
10-May	11	6	2	10	3	5	118	1%	304
17-May	10	12	8	2	8	4	122	-2%	300
24-May	8	4	5	7	7	2	124	-6%	295
31-May	12	3	6	15	3	6	130	-4%	298
7-Jun	5	6	4	1	4	4	134	-4%	298
14-Jun	9	5	8	4	7	8	142	-3%	299
21-Jun	10	9	4	7	6	7	149	-2%	300
28-Jun	4	2	1	5	2	13	162	5%	311
5-Jul	4	7	10	8	8	2	164	1%	305
12-Jul	6	6	5	9	7	7	171	1%	305
19-Jul	10	6	8	2	2	3	174	2%	306
26-Jul	3	7	3	6	6	8	182	3%	308
2-Aug	5	8	8	1	7				
9-Aug	11	6	4	2	8				
16-Aug	2	6	3	7	6				
23-Aug	5	2	6	9	3				
30-Aug	7	8	2	4	8				
6-Sep	5	3	8	6	2				
13-Sep	7	3	11	7	6				
20-Sep	5	6	19	5	6				
27-Sep	3	13	4	4	3				
4-Oct	5	6	11	13	9				
11-Oct	8	9	2	7	5				
18-Oct	7	8	4	9	5				
25-Oct	3	3	4	5	4				
1-Nov	8	7	7	5	5				
8-Nov	5	6	4	8	3				
15-Nov	8	6	11	5	8				
22-Nov	5	2	6	7	8				
29-Nov	6	3	15	6	5				
6-Dec	7	8	5	16	4				
13-Dec	5	6	6	7	8				
20-Dec	4	5	11	8	5				
27-Dec	9	13	3	5	8				
31-Dec	2	4							
Total	343	346	337	332	303	182			

Alcohol Related Deaths

BAC Fatalities (12 months to April 2009)

- 25% of killed and tested drivers and riders had a BAC at 0.05 g/100ml or over (43 of 174) compared to 28% over the previous 12 month period (59 of 212).
- In Melbourne, 17 drivers/riders killed and tested were at or over 0.05, with 59% of these having a BAC in excess of 0.15 g/100ml. Across rural Victoria, 26 drivers/riders killed and tested were at or over 0.05, with 65% of these having a BAC over 0.15.
- Of the 43 drivers and riders killed and tested at or over 0.05, 19% (8) were aged under 21, 26% (11) were aged 21-29, 19% (8) were aged 30-39 and 36% (15) were aged 40 years and over. In the previous year (59 killed) the corresponding figures were 19% (11), 27% (16), 31% (18) and 24% (15), respectively.

BAC (January - April)

Category	2009	2008	2007	2009 v 2008	2009 v 2007	5 Year Av
Melbourne Drivers and Riders						
<0.05	22	20	20	2 (10%)	2 (10%)	22
[a] at 0.05 & above	3	10	12	-7 (-70%)	-9	9
% at 0.05 & above	(12%)	(33%)	(38%)			(29%)
[b] >0.15	2	4	5	-2 (-50%)	-3	4
%>0.15	(8%)	(13%)	(16%)			(14%)
[b] as a % of [a]	(67%)	(40%)	(42%)			(50%)
BAC Unknown	1	1	2	0 (0%)	-1 (-50%)	1
Country Drivers and Riders						
<0.05	29	27	26	2 (7%)	3 (12%)	27
[a] at 0.05 & above	10	11	12	-1 (-9%)	-2 (-17%)	10
% at 0.05 & above	(26%)	(29%)	(32%)			(26%)
[b] >0.15	4	7	7	-3 (-43%)	-3 (-43%)	6
%>0.15	(10%)	(18%)	(18%)			(16%)
[b] as a % of [a]	(40%)	(64%)	(58%)			(60%)
BAC Unknown	0	0	1	0	-1 (-100%)	1
Victorian Total Drivers and Riders						
<0.05	51	47	46	4 (9%)	5 (11%)	49
[a] at 0.05 & above	13	21	24	-8 (-38%)	-11 (-46%)	18
% at 0.05 & above	(20%)	(31%)	(34%)			(27%)
[b] >0.15	6	11	12	-5 (-45%)	-6 (-50%)	10
%>0.15	(9%)	(16%)	(17%)			(15%)
[b] as a % of [a]	(46%)	(52%)	(50%)			(55%)
BAC Unknown	1	1	3	0 (0%)	-2 (-67%)	2
Victorian Total Pedestrians						
<0.05	9	13	7	-4 (-31%)	2 (29%)	9
[a] at 0.05 & above	7	3	2	4 (133%)	5 (250%)	5
% at 0.05 & above	(44%)	(19%)	(22%)			(35%)
[b] >0.15	1	3	1	-2 (-67%)	0 (0%)	3
%>0.15	(6%)	(19%)	(11%)			(18%)
[b] as a % of [a]	(14%)	(100%)	(50%)			(52%)
BAC Unknown	2	1	0	1 (100%)	2	1

BAC (12 months to April)

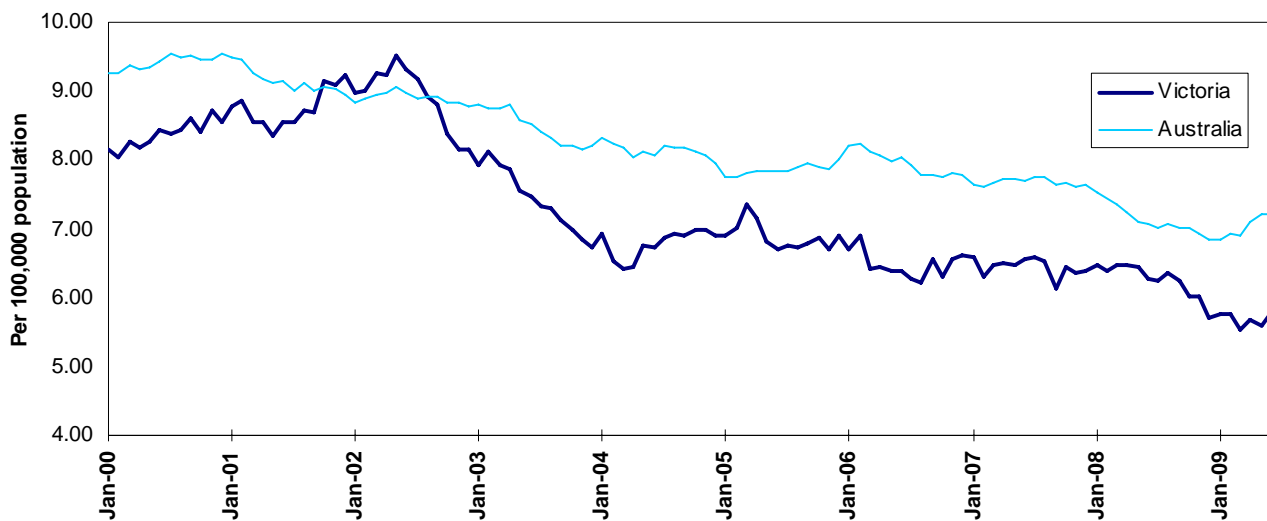
Category	2009	2008	2007	2009 v 2008	2009 v 2007	5 Year Av
Melbourne Drivers and Riders						
<0.05	66	63	67	3 (5%)	-1 (-1%)	65
[a] at 0.05 & above	17	26	18	-9 (-35%)	-1 (-6%)	23
% at 0.05 & above	(20%)	(29%)	(21%)			(26%)
[b] >0.15	10	12	8	-2 (-17%)	2 (25%)	11
%>0.15	(12%)	(13%)	(9%)			(13%)
[b] as a % of [a]	(59%)	(46%)	(44%)			(50%)
BAC Unknown	3	1	3	2 (200%)	0 (0%)	3
Country Drivers and Riders						
<0.05	65	90	85	-25 (-28%)	-20 (-24%)	80
[a] at 0.05 & above	26	33	30	-7 (-21%)	-4 (-13%)	29
% at 0.05 & above	(29%)	(27%)	(26%)			(26%)
[b] >0.15	17	20	17	-3 (-15%)	0 (0%)	19
%>0.15	(19%)	(16%)	(15%)			(17%)
[b] as a % of [a]	(65%)	(61%)	(57%)			(65%)
BAC Unknown	2	1	9	1 (100%)	-7 (-78%)	5
Victorian Total Drivers and Riders						
<0.05	131	153	152	-22 (-14%)	-21 (-14%)	145
[a] at 0.05 & above	43	59	48	-16 (-27%)	-5 (-10%)	52
% at 0.05 & above	(25%)	(28%)	(24%)			(26%)
[b] >0.15	27	32	25	-5 (-16%)	2 (8%)	30
%>0.15	(16%)	(15%)	(13%)			(15%)
[b] as a % of [a]	(63%)	(54%)	(52%)			(58%)
BAC Unknown	5	2	12	3 (150%)	-7 (-58%)	7
Victorian Total Pedestrians						
<0.05	35	38	29	-3 (-8%)	6 (21%)	32
[a] at 0.05 & above	21	9	14	12 (133%)	7 (50%)	15
% at 0.05 & above	(38%)	(19%)	(33%)			(31%)
[b] >0.15	10	8	10	2 (25%)	0 (0%)	10
%>0.15	(18%)	(17%)	(23%)			(21%)
[b] as a % of [a]	(48%)	(89%)	(71%)			(68%)
BAC Unknown	4	2	6	2 (100%)	-2 (-33%)	5

The National Picture

State	Killed (12 months to June)					2009 v 2008
	2009	2008	2007	2006		
NSW	444	386	443	536	58	(15%)
VIC	310	330	337	323	-20	(-6%)
QLD	351	331	367	342	20	(6%)
SA	126	107	105	146	19	(18%)
WA	203	222	225	177	-19	(-9%)
TAS	51	41	56	56	10	(24%)
NT	56	69	49	48	-13	(-19%)
ACT	13	14	17	19	-1	(-7%)
AUST TOTAL	1,554	1,500	1,599	1,647	54	(4%)
AUST minus VIC	1,244	1,170	1,262	1,324	74	(6%)

State	Deaths per 10,000 registered vehicles (12 months to June)			Deaths per 100,000 population (12 months to June)		
	2009	2008	2007	2009	2008	2007
NSW	0.96	0.87	1.02	6.34	5.58	6.46
VIC	0.78	0.85	0.89	5.80	6.27	6.55
QLD	1.07	1.06	1.22	8.11	7.79	8.91
SA	1.05	0.91	0.91	7.82	6.69	6.69
WA	1.13	1.28	1.36	9.26	10.41	10.83
TAS	1.28	1.06	1.48	10.19	8.27	11.40
NT	4.42	5.69	4.18	25.18	31.49	23.24
ACT	0.52	0.60	0.75	3.75	4.05	5.08
AUST TOTAL	0.99	0.99	1.09	7.21	7.07	7.68
AUST minus VIC	1.06	1.04	1.16	7.67	7.33	8.06

Victoria v Australia – 12 Month Moving Fatality Rate



Booze-Bus Random Breath Testing

January-June

	2009	2008	2007	2009 v 2008		2009 v 2007	
Melbourne	493,867	598,031	499,828	-104,164	(-17%)	-5,961	(-1%)
Country	95,342	118,935	140,643	-23,593	(-20%)	-45,301	(-32%)
Vic Total	589,209	716,966	640,471	-127,757	(-18%)	-51,262	(-8%)

12 months to June vs previous 12 months

	2009	2008	2007	2009 v 2008		2009 v 2007	
Melbourne	1,075,192	1,078,715	1,024,078	-3,523	(-0%)	51,114	(5%)
Country	216,236	236,635	276,482	-20,399	(-9%)	-60,246	(-22%)
Vic Total	1,291,428	1,315,350	1,300,560	-23,922	(-2%)	-9,132	(-1%)

Mobile Safety Camera Data

Speed Infringements Issued from Mobile Cameras (monthly totals)

Monthly Average = 45,567

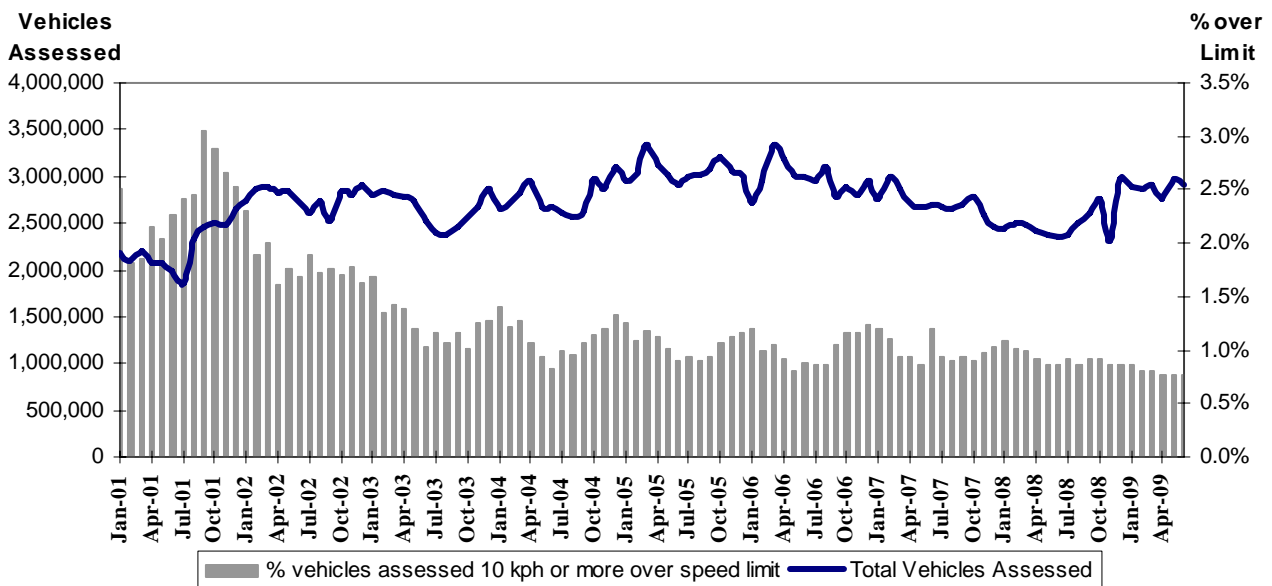
2008						2009					
Jul	Aug	Sep	Oct	Nov	Dec	Jan	Feb	Mar	Apr	May	Jun
43,778	40,730	44,653	50,920	41,762	45,270	55,949	47,286	49,261	43,314	37,758	46,126

Excessive Speed Infringements Issued from Mobile Cameras (monthly totals)

Monthly Average = 363

2008						2009					
Jul	Aug	Sep	Oct	Nov	Dec	Jan	Feb	Mar	Apr	May	Jun
318	345	309	422	325	332	422	351	438	359	339	394

Mobile Safety Cameras – Vehicles assessed and percentage of vehicles assessed 10km/h or more over speed limit per month



Explanations and References

Hi-Alcetime is those times of the day and week (*shaded* in the table below) when casualty crashes are **ten times more likely to involve alcohol** than casualty crashes at other (**Lo-Alcetime**) times.

	12am - 6am	6am - 8am	8am - 10am	10am - 2pm	2pm - 4pm	4pm - 6pm	6pm - 12pm
Monday							
Tuesday							
Wednesday							
Thursday							
Friday							
Saturday							
Sunday							

Useful Internet Sites

TAC Sites

- TAC Safety (Road Safety) www.tacsafety.com.au
- TAC How safe is your car www.howsafeisyourcar.com.au
- TAC Learners Log www.learnerslog.com.au
- TAC Motorcycle Safety Website www.spokes.com.au
- TAC Corporate site www.tac.vic.gov.au

Victorian Sites:

- VicRoads www.vicroads.vic.gov.au
- Victorian Police (Operation Countdown) www.operationcountdown.com.au
- Parliamentary Road Safety Committee www.parliament.vic.gov.au/parlrsc/
- ARRB Transport Research www.arrb.com.au
- RACV www.racv.com.au
- Monash University Accident Research Centre www.general.monash.edu.au/muarc
- Roadsafe www.roadsafe.org.au

National and Interstate Sites:

- Australian Transport Safety Bureau www.atsb.gov.au
- Roads and Traffic Authority (NSW) www.rta.nsw.gov.au
- Queensland Transport - Road Safety www.roadsafety.net
- Department of Transport (SA) www.transport.sa.gov.au/index.htm
- Main Roads Western Australia - Road Safety www.mrwa.wa.gov.au

International Sites:

- National Highway Traffic Safety Admin (USA) www.nhtsa.dot.gov
- Swedish Road and Transport Institute (VTI) www.vti.se
- SWOV Institute for Road Safety Research www.swov.nl

Related Sites:

- Australian Drug Foundation www.adf.org.au
- Bicycle Victoria www.bv.com.au

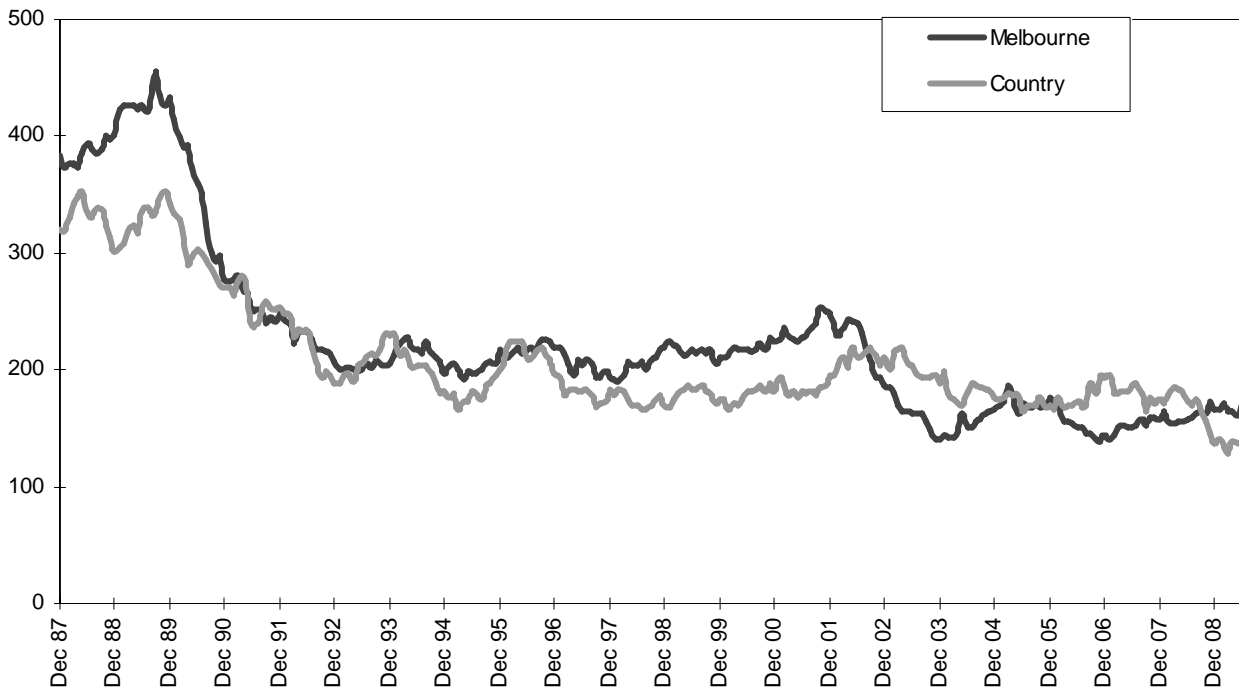
Graphs

Urban/Rural Fatalities	Graphs 1
Road User Group Fatalities	Graphs 2 (a-d)
Pedestrian and Driver/Rider Deaths with a BAC at 0.05 and over	Graphs 3 (a-e)
Single Vehicle Fatalities	Graph 4
Random Breath Testing	Graphs 5 (a-b)

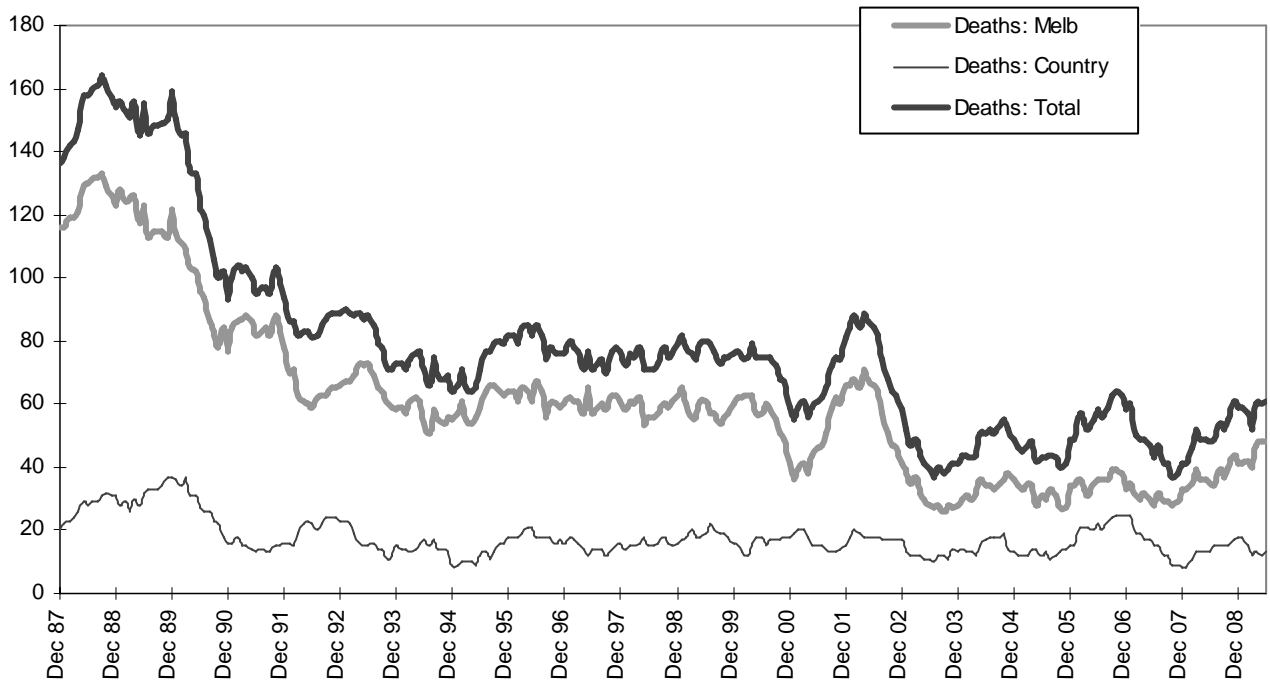
Notes

- All graphs are 12 month moving totals.
- Data is subject to revision as additional information about known accidents is received, and as new accident reports are received and processed.

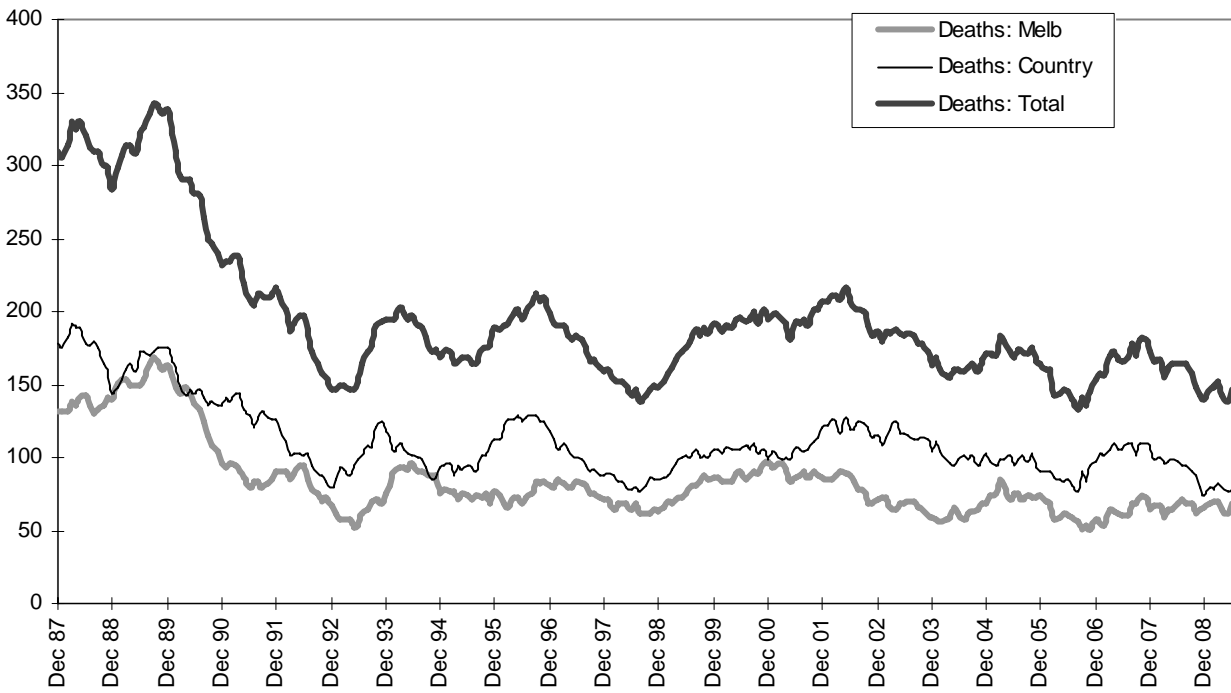
Graph 1 – Melbourne/country fatalities



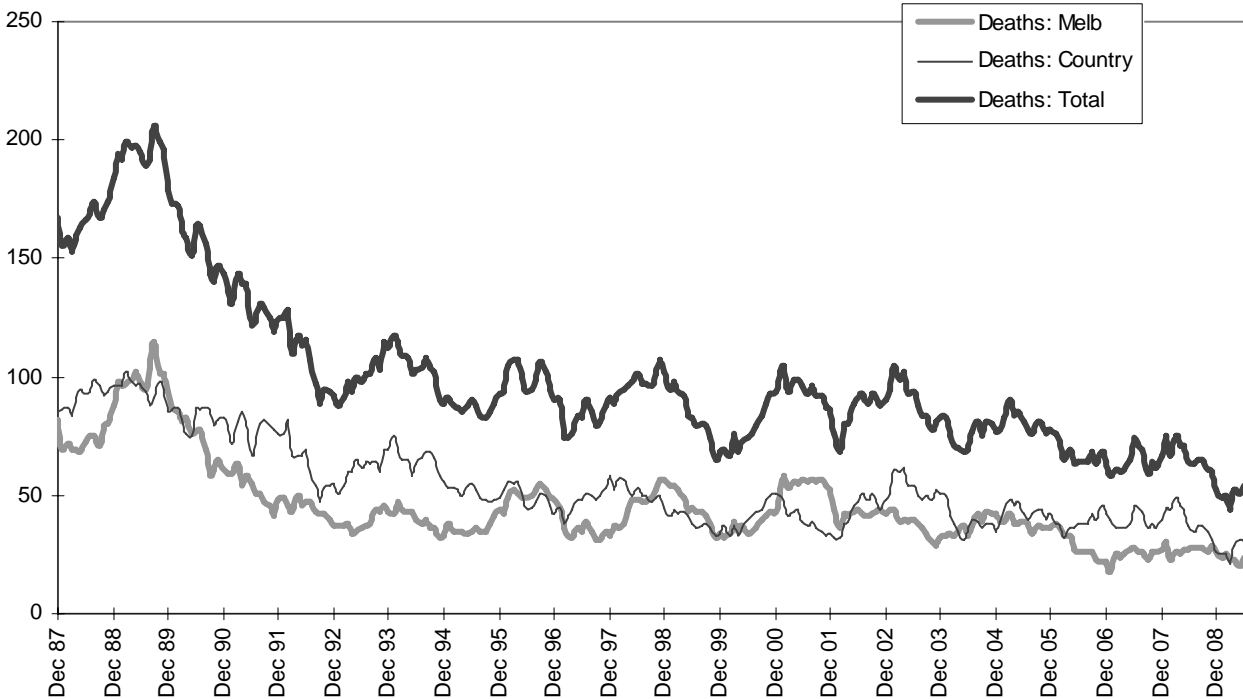
Graph 2a – Pedestrian fatalities (Melbourne/country)



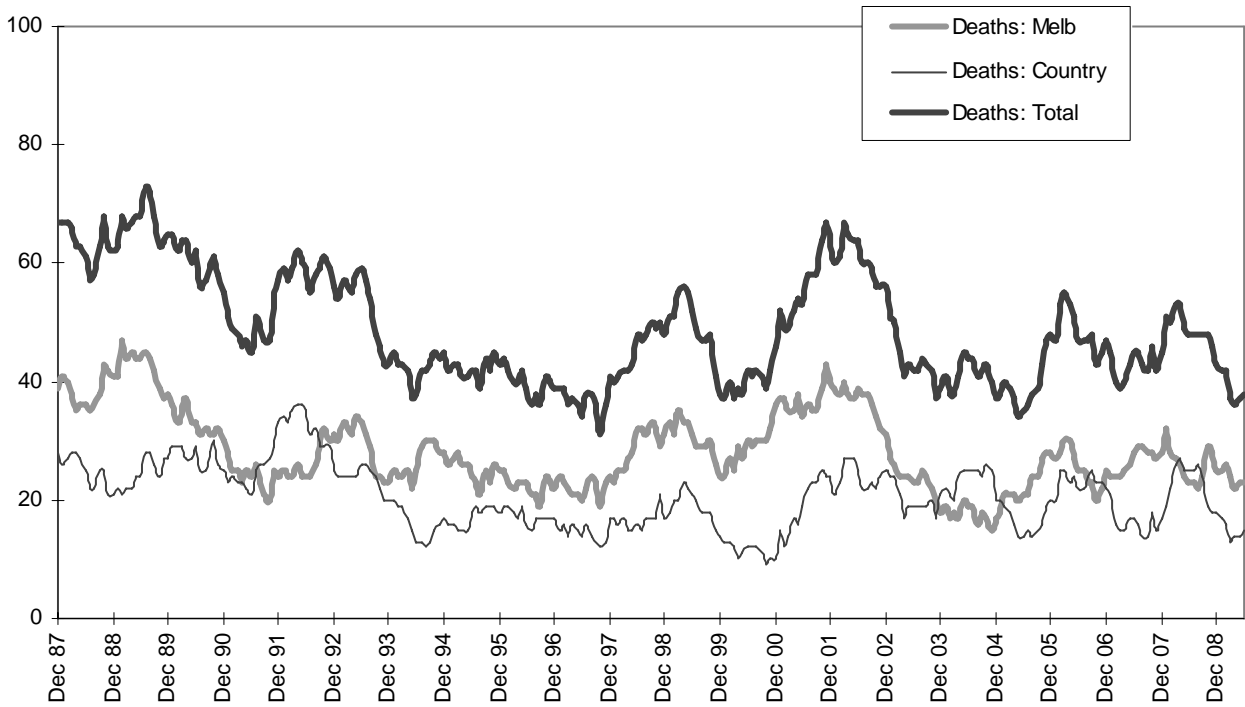
Graph 2b – Driver fatalities (Melbourne/country)



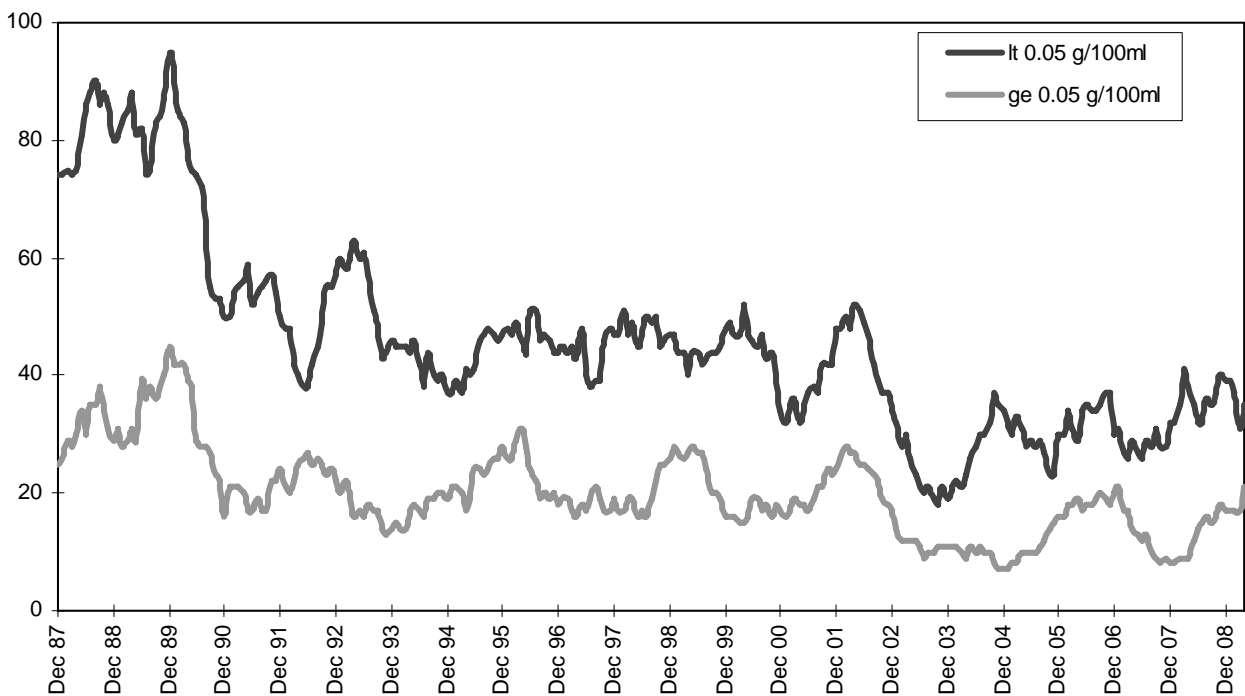
Graph 2c – Passenger fatalities (Melbourne/country)



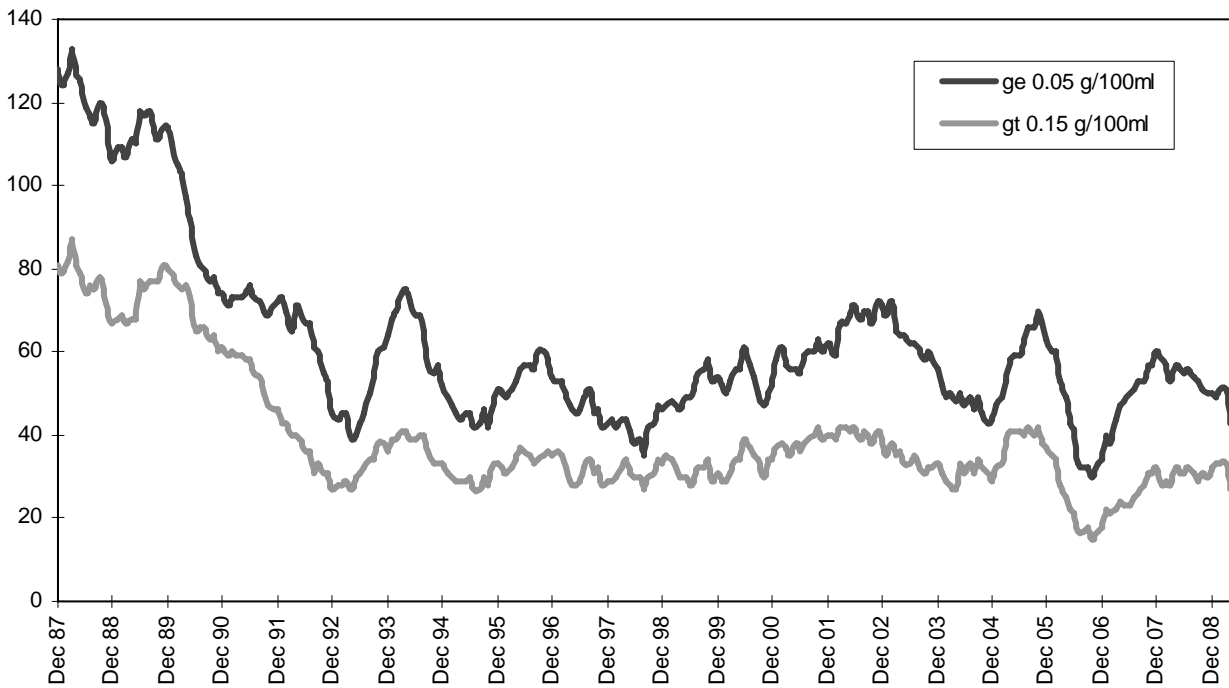
Graph 2d –Motorcyclist fatalities (Melbourne/country)



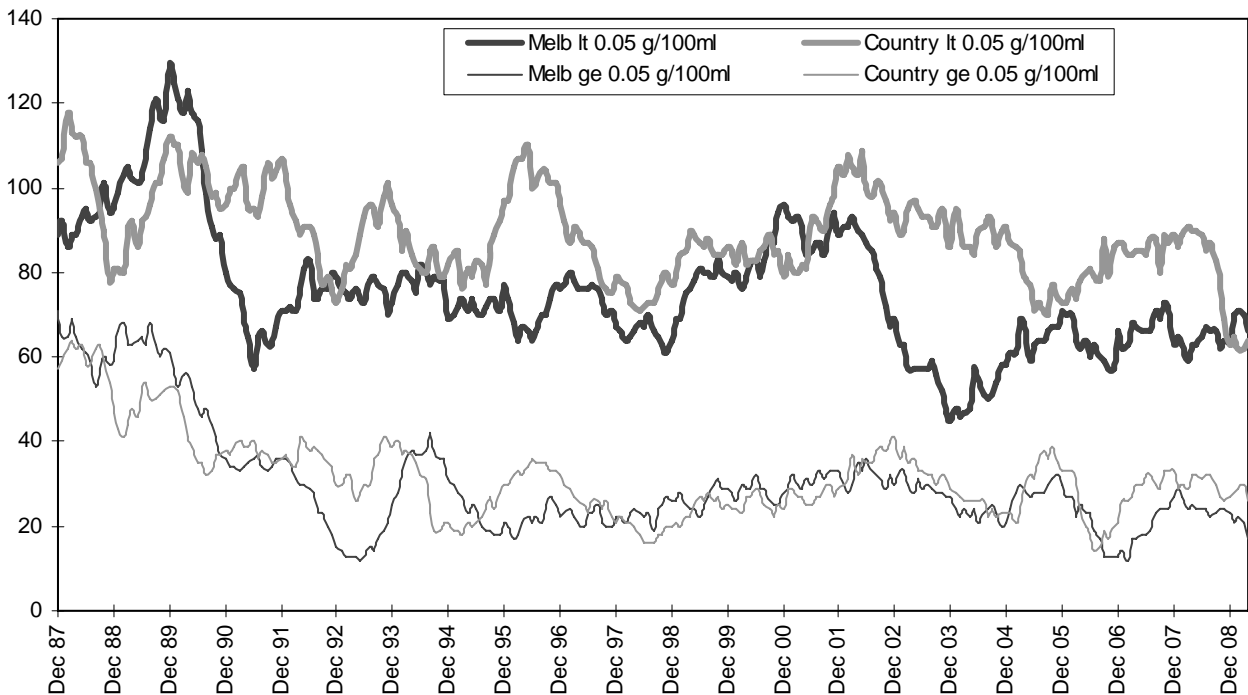
Graph 3a – Pedestrian deaths by BAC



Graph 3b – Driver/rider deaths by BAC



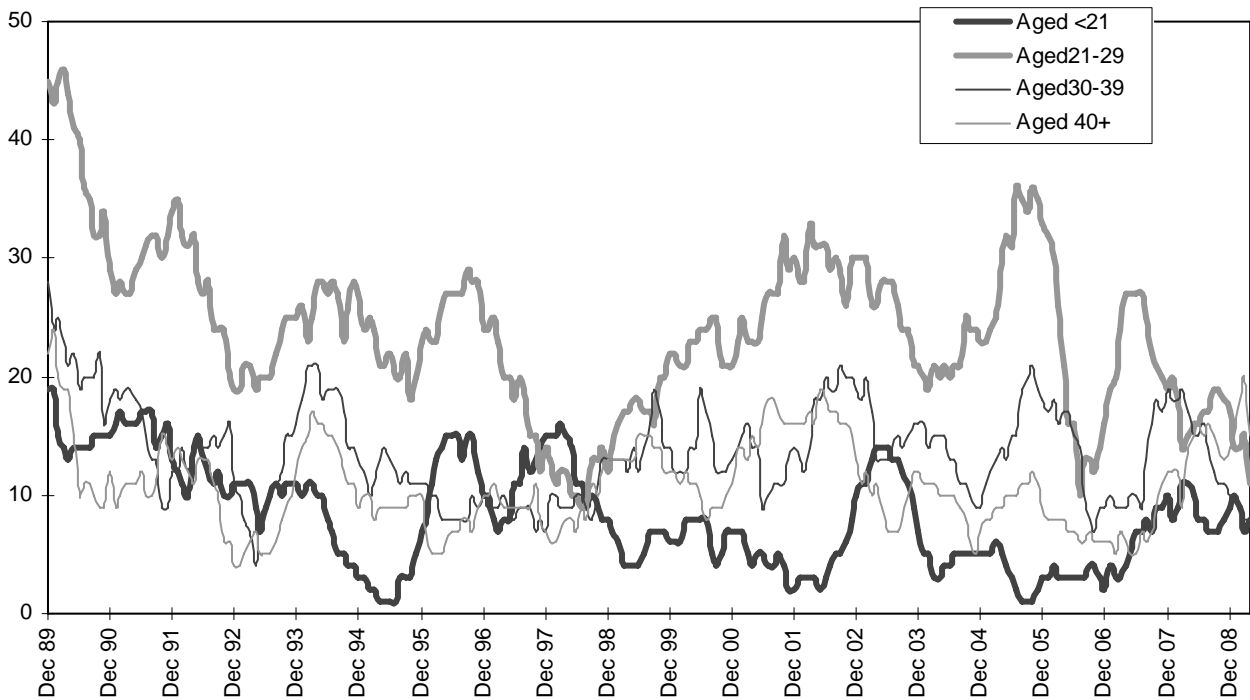
Graph 3c – Driver/rider deaths by BAC (Melbourne/country)



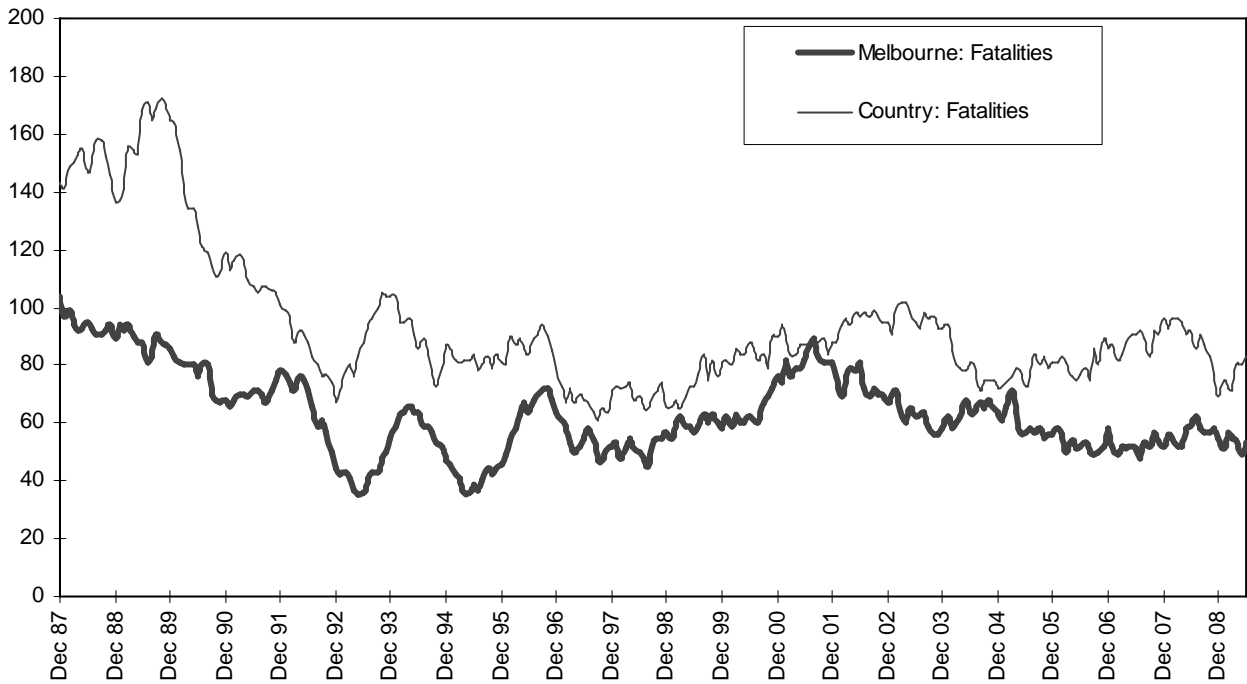
Graph 3d – Proportion of driver/rider deaths with a BAC ge 0.05



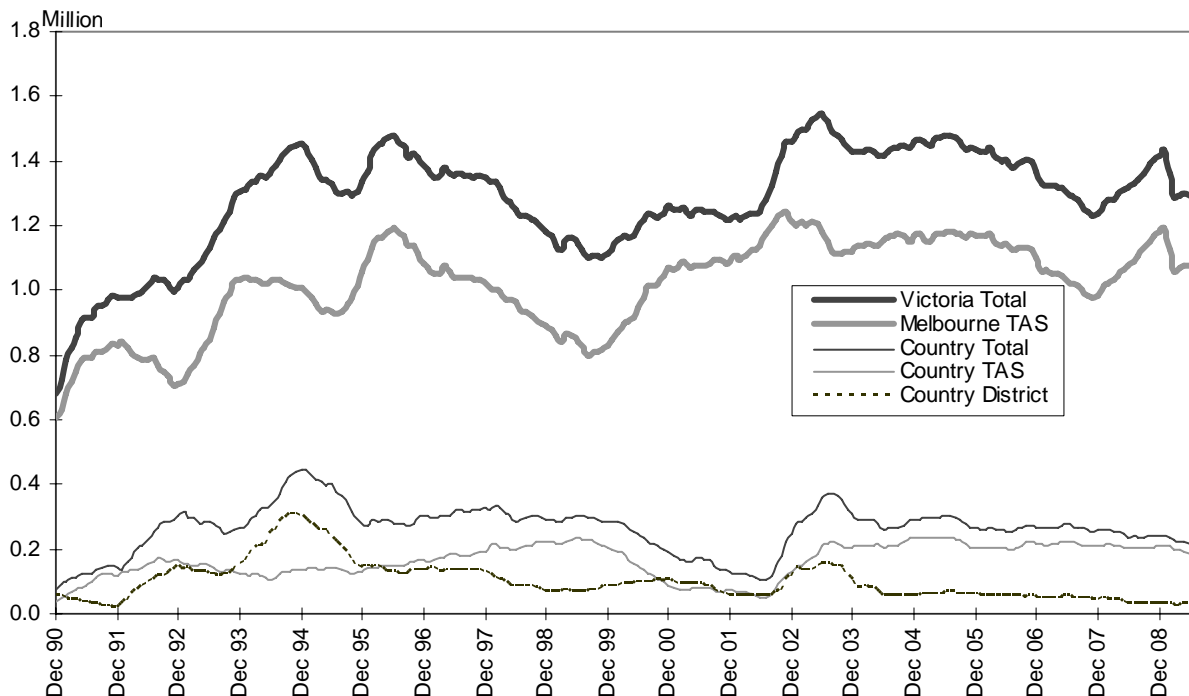
Graph 3e – Killed drivers and riders with a BAC ge 0.05 by age group



Graph 4 – Single vehicle off-path deaths



Graph 5a – Booze-Bus RBTs



Graph 5b – RBT: Percentage positive readings

