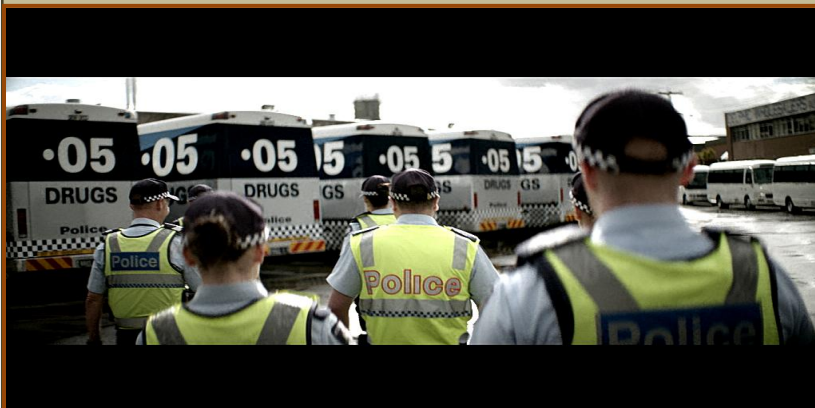


ROAD SAFETY STATISTICAL SUMMARY

July 2013



**TRANSPORT
ACCIDENT
COMMISSION**

60 Brougham Street
Geelong Vic 3220
PO Box 742
Geelong Vic 3220
Ausdoc DX 216079 Geelong

Telephone 1300 654 329
STD Toll Free 1800 332 556
Fax: 03 9656 9300
www.tac.vic.gov.au
ABN 22 033 947 623

Contents

Status Report.....	4
Fatalities.....	4
Claims involving acute hospitalisation over 14 days and an acute hospital admission*	5
Fatalities: 12 months to July 2013	6
Claims involving acute hospitalisation over 14 days: 12 months to January 2013 (claim acceptance date)	8
Claims involving an acute hospital admission: 12 months to January 2013 (claim acceptance date)	10
Fatalities: Victorian monthly totals since 1951	12
Fatalities by Week (2007 to 2013).....	13
Alcohol Related Fatalities.....	14
The National Picture	15
Booze-Bus Random Breath Testing	16
Mobile Safety Camera Data	16
Explanations and References	17
Useful Internet Sites.....	18
Figures	19

Note about the data in this report

- All data provided in this report is the data most recently available at time of production. Fatalities, breath-test data and safety camera data are updated to the end of report month. A 6-month lag applies to TAC claims data, and a 2-month lag applies to alcohol related fatalities data.
- Reported data inclusive of February 2008 or February 2012 will have one extra day of exposure compared to non-leap years.
- Data is subject to revision as additional information about known accidents/claims is received, and as new accident/claim reports are received and processed.

*An acute hospital admission refers to a hospital admission that occurred within 7 days of accident.

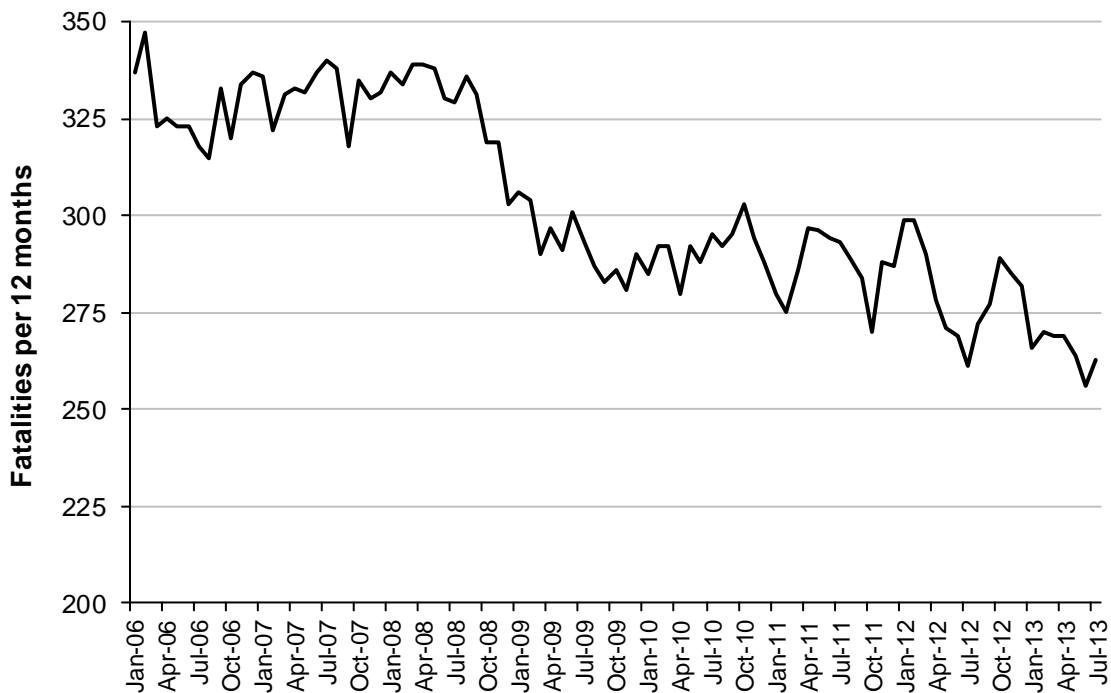
Status Report

Fatalities

- The rolling 12 month number of road fatalities in July 2013 stands at 263, 2% more than in 2012 (261).
- 24 people were fatally injured in July 2013 and 14 in June 2013 on Victorian roads. This compares to 17 in July 2012 and 22 in June 2012.

Fatalities (year to date, to end July 2013)

Category	2013	2012	2011	2013 v 2012		2013 v 2011		5 Year Av
Fatal Injuries (Rolling 12 Month Total)								
Fatal (to July)	263	261	293	+2	(+1%)	-30	(-10%)	281
per 10,000 veh	0.60	0.61	0.70	-0.01	(-2%)	-0.10	(-14%)	0.67
per 100,000 pop	4.63	4.68	5.32	-0.05	(-1%)	-0.69	(-13%)	5.10
Accidents (Rolling 12 Month Total)								
Fatal (to July)	243	237	272	6	(+3%)	-29	(-11%)	256
per 10,000 veh	0.56	0.55	0.65	+0.01	(+2%)	-0.09	(-14%)	0.61
per 100,000 pop	4.28	4.25	4.94	0.03	(+1%)	-0.66	(-13%)	4.68

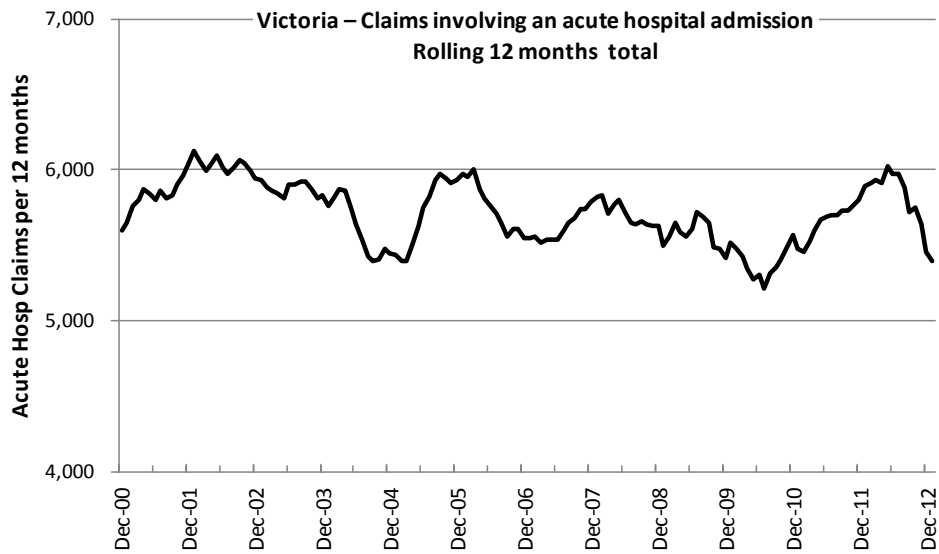
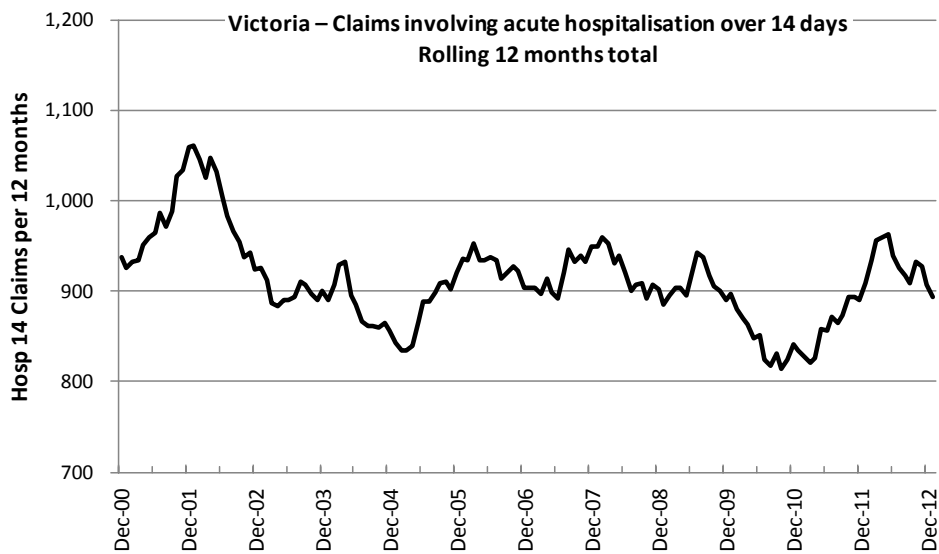


Victoria – Fatalities, rolling 12 months total

Claims involving acute hospitalisation over 14 days and an acute hospital admission*

(by claim acceptance date - year to date, to midnight 31 January 2013)

Category	2013	2012	2011	2013 vs. 2012		2012 vs. 2011		5 Year Av
Claims involving acute hospitalisation over 14 days (Rolling 12 Month Total)								
Claims (to January)	897	908	835	-11	(-1%)	+62	(+7%)	895
per 100,000 pop	15.9	16.4	15.3	-0.5	(-3%)	+0.6	(+4%)	2.2
per 10,000 veh	2.1	2.1	2.0	0.0	(+0%)	+0.1	(+5%)	16.7
Claims involving an acute hospital admission (Rolling 12 Month Total)								
Claims (to January)	5,432	5,887	5,472	-455	(-8%)	-40	(-1%)	5,640
per 100,000 pop	96.5	106.3	100.0	-9.8	(-9%)	-3.5	(-3%)	14.0
per 10,000 veh	12.5	13.9	13.2	-1.3	(-10%)	-0.7	(-5%)	104.7



*An acute hospital admission refers to a hospital admission that occurred within 7 days of accident.

Fatalities: 12 months to July 2013

Category	2013	2012	2011	2013 v 2012		2013 v 2011		5 Year Av
Overview								
Fatalities	263	261	293	+2	(+1%)	-30	(-10%)	281
Accidents	243	237	272	+6	(+3%)	-29	(-11%)	256
Sex								
Female	77	79	75	-2	(-3%)	+2	(+3%)	80
Male	184	182	218	+2	(+1%)	-34	(-16%)	201
Roaduser								
Bicyclist	6	8	8	-2	(-25%)	-2	(-25%)	41
Driver	141	119	131	+22	(+18%)	+10	(+8%)	662
Motorcyclist	43	38	49	+5	(+13%)	-6	(-12%)	219
Passenger	40	51	66	-11	(-22%)	-26	(-39%)	262
Pedestrian	33	45	39	-12	(-27%)	-6	(-15%)	221
Location								
Melbourne	107	125	125	-18	(-14%)	-18	(-14%)	131
Rural Victoria	156	136	168	+20	(+15%)	-12	(-7%)	150
Agegroup								
0-4	2	3	6	-1	(-33%)	-4	(-67%)	5
5-15	7	8	7	-1	(-13%)	0	(0%)	8
16-17	3	8	6	-5	(-63%)	-3	(-50%)	7
18-20	21	29	38	-8	(-28%)	-17	(-45%)	31
21-25	34	27	44	+7	(+26%)	-10	(-23%)	32
26-29	12	23	17	-11	(-48%)	-5	(-29%)	20
30-39	34	38	32	-4	(-11%)	+2	(+6%)	38
40-49	32	23	41	+9	(+39%)	-9	(-22%)	36
50-59	31	33	33	-2	(-6%)	-2	(-6%)	32
60-69	34	28	26	+6	(+21%)	+8	(+31%)	27
70+	49	41	43	+8	(+20%)	+6	(+14%)	45
Altime								
High (Melb)	61	61	71	0	(0%)	-10	(-14%)	70
High (Rural)	69	64	91	+5	(+8%)	-22	(-24%)	72
High (Vic)	130	125	162	+5	(+4%)	-32	(-20%)	142
Low (Melb)	46	64	54	-18	(-28%)	-8	(-15%)	61
Low (Rural)	87	72	77	+15	(+21%)	+10	(+13%)	78
Low (Vic)	133	136	131	-3	(-2%)	+2	(+2%)	139
Accident Type								
Intersection								
Adjacent direction	32	23	33	0	(+39%)	-1	(-3%)	25
Opposing direction	2	6	8	-4	(-67%)	-6	(-75%)	5
Mid-block/other								
Head on	46	34	33	+12	(+35%)	+13	(+39%)	38
Same direction	15	11	16	+4	(+36%)	-1	(-6%)	16
Manoeuvre/o'taking	11	18	16	-7	(-39%)	-5	(-31%)	17
On path	4	5	8	-1	(-20%)	-4	(-50%)	6
Single vehicle	114	108	133	+6	(+6%)	-19	(-14%)	121
Other (incl peds)	39	56	46	-17	(-30%)	-7	(-15%)	53

Fatalities: 12 months to July 2013 – Continued

Category	2013	2012	2011	2013 v 2012		2013 v 2011		5 Year Av
Police Service Area (based on Local Government Area (see p.13))								
BALLARAT	6	3	13	+3	(+100%)	-7	(-54%)	6
BANYULE	3	3	3	0	(0%)	0	(0%)	3
BASS COAST	5	4	9	+1	(+25%)	-4	(-44%)	6
BAW BAW	7	2	15	+5	(+250%)	-8	(-53%)	7
BENALLA	10	4	9	+6	(+150%)	+1	(+11%)	8
BENDIGO	9	10	3	-1	(-10%)	+6	(+200%)	7
BOROONDARA	6	1	2	+5	(+500%)	+4	(+200%)	4
BRIMBANK	5	9	7	-4	(-44%)	-2	(-29%)	6
CAMPASPE	8	6	2	+2	(+33%)	+6	(+300%)	4
CARDINIA	2	10	8	-8	(-80%)	-6	(-75%)	6
CASEY	7	4	9	+3	(+75%)	-2	(-22%)	8
CENTRAL GOLDFIELDS	1	2	8	-1	(-50%)	-7	(-88%)	3
DAREBIN	2	6	2	-4	(-67%)	0	(0%)	3
EAST GIPPSLAND	5	7	7	-2	(-29%)	-2	(-29%)	8
FRANKSTON	0	3	6	-3	(-100%)	-6	(-100%)	5
GEELONG	14	9	12	+5	(+56%)	+2	(+17%)	11
GLEN EIRA	7	5	4	+2	(+40%)	+3	(+75%)	5
GREATER DANDENONG	5	5	3	0	(0%)	+2	(+67%)	5
HOBSONS BAY	3	1	0	+2	(+200%)	+3		2
HORSHAM	4	6	4	-2	(-33%)	0	(0%)	4
HUME	13	5	4	+8	(+160%)	+9	(+225%)	8
KINGSTON	7	8	1	-1	(-13%)	+6	(+600%)	5
KNOX	3	1	2	+2	(+200%)	+1	(+50%)	3
LA TROBE	7	6	4	+1	(+17%)	+3	(+75%)	5
MACEDON RANGES	6	4	3	+2	(+50%)	+3	(+100%)	6
MANNINGHAM	3	2	0	+1	(+50%)	+3		3
MARIBYRNONG	5	2	1	+3	(+150%)	+4	(+400%)	2
MAROONDAH	2	4	4	-2	(-50%)	-2	(-50%)	2
MELBOURNE	2	6	4	-4	(-67%)	-2	(-50%)	4
MELTON	3	6	6	-3	(-50%)	-3	(-50%)	6
MILDURA	3	1	4	+2	(+200%)	-1	(-25%)	3
MITCHELL	8	9	7	-1	(-11%)	+1	(+14%)	8
MONASH	3	3	6	0	(0%)	-3	(-50%)	5
MOONEE VALLEY	2	0	3	+2		-1	(-33%)	2
MOORABOOL	10	7	10	+3	(+43%)	0	(0%)	8
MORELAND	2	3	4	-1	(-33%)	-2	(-50%)	4
MORNINGTON PENINSULA	1	8	8	-7	(-88%)	-7	(-88%)	7
NILLUMBIK	0	3	3	-3	(-100%)	-3	(-100%)	2
NORTHERN GRAMPIANS	4	6	2	-2	(-33%)	+2	(+100%)	4
PORT PHILLIP	2	1	2	+1	(+100%)	0	(0%)	2
SHEPPARTON	8	9	4	-1	(-11%)	+4	(+100%)	7
SOUTHERN GRAMPIANS	4	8	2	-4	(-50%)	+2	(+100%)	5
STONNINGTON	2	1	2	+1	(+100%)	0	(0%)	1
SURF COAST	4	9	10	-5	(-56%)	-6	(-60%)	7
SWAN HILL	6	5	6	+1	(+20%)	0	(0%)	5
WANGARATTA	12	9	15	+3	(+33%)	-3	(-20%)	12
WARRNAMBOOL	5	4	7	+1	(+25%)	-2	(-29%)	5
WELLINGTON	3	2	9	+1	(+50%)	-6	(-67%)	4
WHITEHORSE	0	5	6	-5	(-100%)	-6	(-100%)	4
WHITTLESEA	5	4	7	+1	(+25%)	-2	(-29%)	8
WODONGA	4	4	3	0	(0%)	+1	(+33%)	4
WYNDHAM	7	4	9	+3	(+75%)	-2	(-22%)	7
YARRA	2	2	2	0	(0%)	0	(0%)	3
YARRA RANGES	6	10	7	-4	(-40%)	-1	(-14%)	9

Claims involving acute hospitalisation over 14 days: 12 months to January 2013 (claim acceptance date)

Category	2013	2012	2011	2013 v 2012		2013 v 2011		5 Year Av
Overview								
Claims	897	908	835	-11	(-1%)	+62	(+7%)	884
Sex								
Female	385	368	307	+17	(+5%)	+78	(+25%)	353
Male	511	539	528	-28	(-5%)	-17	(-3%)	531
Roaduser								
Driver	372	342	305	+30	(+9%)	+67	(+22%)	338
Passenger	146	159	121	-13	(-8%)	+25	(+21%)	148
Motorcyclist	153	154	196	-1	(-1%)	-43	(-22%)	166
Pedestrian	168	192	161	-24	(-13%)	+7	(+4%)	173
Cyclist	35	40	43	-5	(-13%)	-8	(-19%)	38
Train/Tram	7	7	8	0	(0%)	-1	(-13%)	6
Location								
Melbourne	579	587	528	-8	(-1%)	+51	(+10%)	557
Rural Victoria	310	307	302	+3	(+1%)	+8	(+3%)	299
Agegroup								
0-4	1	2	8	-1	(-50%)	-7	(-88%)	4
5-15	10	17	16	-7	(-41%)	-6	(-38%)	15
16-17	19	21	20	-2	(-10%)	-1	(-5%)	21
18-20	61	53	58	+8	(+15%)	+3	(+5%)	64
21-25	79	86	77	-7	(-8%)	+2	(+3%)	84
26-29	45	72	45	-27	(-38%)	0	(0%)	54
30-39	110	124	102	-14	(-11%)	+8	(+8%)	117
40-49	126	106	131	+20	(+19%)	-5	(-4%)	117
50-59	98	107	92	-9	(-8%)	+6	(+7%)	98
60-69	110	105	92	+5	(+5%)	+18	(+20%)	99
70+	238	215	194	+23	(+11%)	+44	(+23%)	210
Alctime								
High (Melb)	248	270	212	-22	(-8%)	+36	(+17%)	247
High (Rural)	124	131	125	-7	(-5%)	-1	(-1%)	125
High (Vic)	372	401	337	-29	(-7%)	+35	(+10%)	372
Low (Melb)	331	317	316	+14	(+4%)	+15	(+5%)	311
Low (Rural)	186	176	177	+10	(+6%)	+9	(+5%)	174
Low (Vic)	517	493	493	+24	(+5%)	+24	(+5%)	484
Accident Type								
Intersection								
Adjacent direction	126	115	106	+11	(+10%)	+20	(+19%)	119
Opposing direction	61	62	62	-1	(-2%)	-1	(-2%)	60
Mid-block/other								
Head on	84	82	78	+2	(+2%)	+6	(+8%)	78
Same direction	87	94	97	-7	(-7%)	-10	(-10%)	84
Manoeuvre/o'taking	62	51	49	+11	(+22%)	+13	(+27%)	54
On path	18	24	24	-6	(-25%)	-6	(-25%)	23
Single vehicle	240	262	221	-22	(-8%)	+19	(+9%)	254
Other (incl peds)	219	218	198	+1	(+0%)	+21	(+11%)	207

Note: excludes rejected claims and claims for interstate crashes

Claims involving acute hospitalisation over 14 days: 12 months to January 2013 (claim acceptance date) -
Continued

Category	2013	2012	2011	2013 v 2012		2013 v 2011		5 Year Av
Police Service Area (based on Local Government Area (see p.13))								
BALLARAT	10	18	12	-8	(-44%)	-2	(-17%)	12
BANYULE	10	8	14	+2	(+25%)	-4	(-29%)	10
BASS COAST	14	19	15	-5	(-26%)	-1	(-7%)	17
BAW BAW	10	17	7	-7	(-41%)	+3	(+43%)	9
BENALLA	16	19	18	-3	(-16%)	-2	(-11%)	16
BENDIGO	12	17	24	-5	(-29%)	-12	(-50%)	15
BOROONDARA	22	23	27	-1	(-4%)	-5	(-19%)	22
BRIMBANK	29	27	13	+2	(+7%)	+16	(+123%)	22
CAMPASPE	6	5	5	+1	(+20%)	+1	(+20%)	5
CARDINIA	11	18	20	-7	(-39%)	-9	(-45%)	17
CASEY	21	26	29	-5	(-19%)	-8	(-28%)	27
CENTRAL GOLDFIELDS	2	2	2	0	(0%)	0	(0%)	3
DAREBIN	20	13	20	+7	(+54%)	0	(0%)	18
EAST GIPPSLAND	18	10	14	+8	(+80%)	+4	(+29%)	14
FRANKSTON	11	19	19	-8	(-42%)	-8	(-42%)	18
GEELONG	33	28	20	+5	(+18%)	+13	(+65%)	28
GLEN EIRA	21	34	31	-13	(-38%)	-10	(-32%)	29
GREATER DANDENONG	27	31	26	-4	(-13%)	+1	(+4%)	27
HOBSONS BAY	11	11	8	0	(0%)	+3	(+38%)	9
HORSHAM	9	8	9	+1	(+13%)	0	(0%)	7
HUME	31	25	22	+6	(+24%)	+9	(+41%)	25
KINGSTON	17	19	16	-2	(-11%)	+1	(+6%)	18
KNOX	24	14	11	+10	(+71%)	+13	(+118%)	17
LA TROBE	14	21	16	-7	(-33%)	-2	(-13%)	14
MACEDON RANGES	17	7	25	+10	(+143%)	-8	(-32%)	16
MANNINGHAM	21	14	11	+7	(+50%)	+10	(+91%)	13
MARIBYRNONG	14	15	15	-1	(-7%)	-1	(-7%)	14
MAROONDAH	5	16	11	-11	(-69%)	-6	(-55%)	11
MELBOURNE	31	28	30	+3	(+11%)	+1	(+3%)	27
MELTON	19	14	8	+5	(+36%)	+11	(+138%)	11
MILDURA	11	5	8	+6	(+120%)	+3	(+38%)	7
MITCHELL	27	9	21	+18	(+200%)	+6	(+29%)	17
MONASH	22	22	20	0	(0%)	+2	(+10%)	23
MOONEE VALLEY	20	16	11	+4	(+25%)	+9	(+82%)	15
MOORABOOL	11	12	13	-1	(-8%)	-2	(-15%)	15
MORELAND	25	21	21	+4	(+19%)	+4	(+19%)	20
MORNINGTON PENINSULA	38	30	27	+8	(+27%)	+11	(+41%)	30
NILLUMBIK	9	6	4	+3	(+50%)	+5	(+125%)	6
NORTHERN GRAMPPIANS	7	6	5	+1	(+17%)	+2	(+40%)	6
PORT PHILLIP	10	11	9	-1	(-9%)	+1	(+11%)	13
SHEPPARTON	13	8	11	+5	(+63%)	+2	(+18%)	14
SOUTHERN GRAMPPIANS	8	10	9	-2	(-20%)	-1	(-11%)	9
STONNINGTON	14	21	17	-7	(-33%)	-3	(-18%)	16
SURF COAST	6	17	10	-11	(-65%)	-4	(-40%)	12
SWAN HILL	8	3	4	+5	(+167%)	+4	(+100%)	6
WANGARATTA	16	15	20	+1	(+7%)	-4	(-20%)	16
WARRNAMBOOL	12	18	9	-6	(-33%)	+3	(+33%)	12
WELLINGTON	10	10	9	0	(0%)	+1	(+11%)	11
WHITEHORSE	21	16	21	+5	(+31%)	0	(0%)	21
WHITTLESEA	28	17	14	+11	(+65%)	+14	(+100%)	20
WODONGA	14	7	11	+7	(+100%)	+3	(+27%)	10
WYNDHAM	21	21	13	0	(0%)	+8	(+62%)	18
YARRA	11	14	7	-3	(-21%)	+4	(+57%)	11
YARRA RANGES	15	37	33	-22	(-59%)	-18	(-55%)	29

Note: excludes rejected claims and claims for interstate crashes

Claims involving an acute hospital admission: 12 months to January 2013 (claim acceptance date)

Category	2013	2012	2011	2013 v 2012	2013 v 2011	2013 v 2011	5 Year Av	
Overview								
Claims	5,432	5,887	5,472	-455	(-8%)	-40	(-1%)	5,561
Sex								
Female	2,312	2,503	2,320	-191	(-8%)	-8	(-0%)	2,334
Male	3,119	3,383	3,149	-264	(-8%)	-30	(-1%)	3,226
Roaduser								
Driver	2,581	2,698	2,475	-117	(-4%)	+106	(+4%)	2,504
Passenger	905	1,106	1,042	-201	(-18%)	-137	(-13%)	1,030
Motorcyclist	817	970	939	-153	(-16%)	-122	(-13%)	933
Pedestrian	616	658	632	-42	(-6%)	-16	(-3%)	612
Cyclist	353	360	328	-7	(-2%)	+25	(+8%)	329
Train/Tram	27	22	27	+5	(+23%)	0	(0%)	21
Location								
Melbourne	3,549	4,008	3,667	-459	(-11%)	-118	(-3%)	3,636
Rural Victoria	1,803	1,810	1,778	-7	(-0%)	+25	(+1%)	1,736
Agegroup								
0-4	50	50	52	0	(0%)	-2	(-4%)	50
5-15	173	207	207	-34	(-16%)	-34	(-16%)	203
16-17	110	123	137	-13	(-11%)	-27	(-20%)	135
18-20	504	555	542	-51	(-9%)	-38	(-7%)	560
21-25	661	762	638	-101	(-13%)	+23	(+4%)	698
26-29	425	424	432	+1	(+0%)	-7	(-2%)	424
30-39	859	922	860	-63	(-7%)	-1	(-0%)	901
40-49	804	894	821	-90	(-10%)	-17	(-2%)	823
50-59	670	731	680	-61	(-8%)	-10	(-1%)	665
60-69	465	538	475	-73	(-14%)	-10	(-2%)	461
70+	711	681	628	+30	(+4%)	+83	(+13%)	642
Alctime								
High (Melb)	1,585	1,849	1,642	-264	(-14%)	-57	(-3%)	1,657
High (Rural)	770	779	789	-9	(-1%)	-19	(-2%)	763
High (Vic)	2,355	2,628	2,431	-273	(-10%)	-76	(-3%)	2,420
Low (Melb)	1,964	2,159	2,025	-195	(-9%)	-61	(-3%)	1,979
Low (Rural)	1,033	1,031	989	+2	(+0%)	+44	(+4%)	973
Low (Vic)	2,997	3,190	3,014	-193	(-6%)	-17	(-1%)	2,952
Accident Type								
Intersection								
Adjacent direction	783	924	818	-141	(-15%)	-35	(-4%)	837
Opposing direction	488	481	442	+7	(+1%)	+46	(+10%)	454
Mid-block/other								
Head on	300	366	319	-66	(-18%)	-19	(-6%)	322
Same direction	819	976	905	-157	(-16%)	-86	(-10%)	841
Manoeuvre/o'taking	295	323	336	-28	(-9%)	-41	(-12%)	319
On path	218	197	203	+21	(+11%)	+15	(+7%)	211
Single vehicle	1,462	1,642	1,554	-180	(-11%)	-92	(-6%)	1,591
Other (incl peds)	1,067	978	895	+89	(+9%)	+172	(+19%)	936

Note: excludes rejected claims and claims for interstate crashes

Claims involving an acute hospital admission: 12 months to January 2013 (claim acceptance date) -
Continued

Category	2013	2012	2011	2013 v 2012		2013 v 2011		5 Year Av
Police Service Area (based on Local Government Area (see p.13))								
BALLARAT	97	100	91	-3	(-3%)	+6	(+7%)	90
BANYULE	61	58	61	+3	(+5%)	0	(0%)	61
BASS COAST	68	87	76	-19	(-22%)	-8	(-11%)	75
BAW BAW	57	68	51	-11	(-16%)	+6	(+12%)	51
BENALLA	93	98	113	-5	(-5%)	-20	(-18%)	98
BENDIGO	123	103	85	+20	(+19%)	+38	(+45%)	92
BOROONDARA	110	140	149	-30	(-21%)	-39	(-26%)	128
BRIMBANK	168	172	102	-4	(-2%)	+66	(+65%)	144
CAMPASPE	42	37	40	+5	(+14%)	+2	(+5%)	36
CARDINIA	82	96	106	-14	(-15%)	-24	(-23%)	88
CASEY	204	248	231	-44	(-18%)	-27	(-12%)	220
CENTRAL GOLDFIELDS	8	6	8	+2	(+33%)	0	(0%)	10
DAREBIN	99	94	116	+5	(+5%)	-17	(-15%)	101
EAST GIPPSLAND	88	64	50	+24	(+38%)	+38	(+76%)	62
FRANKSTON	120	160	143	-40	(-25%)	-23	(-16%)	138
GEELONG	221	235	236	-14	(-6%)	-15	(-6%)	225
GLEN EIRA	147	170	177	-23	(-14%)	-30	(-17%)	159
GREATER DANDENONG	188	215	193	-27	(-13%)	-5	(-3%)	180
HOBSONS BAY	63	59	66	+4	(+7%)	-3	(-5%)	63
HORSHAM	38	38	35	0	(0%)	+3	(+9%)	31
HUME	142	145	138	-3	(-2%)	+4	(+3%)	146
KINGSTON	129	128	127	+1	(+1%)	+2	(+2%)	130
KNOX	97	125	125	-28	(-22%)	-28	(-22%)	119
LA TROBE	60	80	64	-20	(-25%)	-4	(-6%)	61
MACEDON RANGES	75	74	82	+1	(+1%)	-7	(-9%)	76
MANNINGHAM	85	62	74	+23	(+37%)	+11	(+15%)	68
MARIBYRNONG	64	113	56	-49	(-43%)	+8	(+14%)	76
MAROONDAH	52	84	72	-32	(-38%)	-20	(-28%)	68
MELBOURNE	242	228	211	+14	(+6%)	+31	(+15%)	206
MELTON	72	81	66	-9	(-11%)	+6	(+9%)	67
MILDURA	38	38	32	0	(0%)	+6	(+19%)	33
MITCHELL	102	66	98	+36	(+55%)	+4	(+4%)	80
MONASH	165	164	155	+1	(+1%)	+10	(+6%)	163
MOONEE VALLEY	111	105	86	+6	(+6%)	+25	(+29%)	99
MOORABOOL	95	92	84	+3	(+3%)	+11	(+13%)	97
MORELAND	125	158	128	-33	(-21%)	-3	(-2%)	133
MORNINGTON PENINSULA	141	196	154	-55	(-28%)	-13	(-8%)	162
NILLUMBIK	40	47	33	-7	(-15%)	+7	(+21%)	37
NORTHERN GRAMPPIANS	38	37	29	+1	(+3%)	+9	(+31%)	34
PORT PHILLIP	102	124	95	-22	(-18%)	+7	(+7%)	110
SHEPPARTON	73	58	56	+15	(+26%)	+17	(+30%)	69
SOUTHERN GRAMPPIANS	45	48	42	-3	(-6%)	+3	(+7%)	42
STONNINGTON	107	133	122	-26	(-20%)	-15	(-12%)	115
SURF COAST	49	79	74	-30	(-38%)	-25	(-34%)	76
SWAN HILL	27	26	19	+1	(+4%)	+8	(+42%)	29
WANGARATTA	101	92	106	+9	(+10%)	-5	(-5%)	100
WARRNAMBOOL	76	98	110	-22	(-22%)	-34	(-31%)	84
WELLINGTON	64	89	62	-25	(-28%)	+2	(+3%)	72
WHITEHORSE	110	107	141	+3	(+3%)	-31	(-22%)	119
WHITTLESEA	150	115	126	+35	(+30%)	+24	(+19%)	124
WODONGA	87	49	72	+38	(+78%)	+15	(+21%)	65
WYNDHAM	127	168	104	-41	(-24%)	+23	(+22%)	122
YARRA	90	117	108	-27	(-23%)	-18	(-17%)	99
YARRA RANGES	156	196	202	-40	(-20%)	-46	(-23%)	187

Note: excludes rejected claims and claims for interstate crashes

Fatalities: Victorian monthly totals since 1951

Year	Jan	Feb	Mar	Apr	May	Jun	Jul	Aug	Sep	Oct	Nov	Dec	Totals
1951							61	59	52	38	29	41	
1952	45	40	54	61	54	69	67	55	44	44	31	20	584
1953	23	28	54	58	49	42	50	37	44	27	36	32	480
1954	44	42	28	60	55	36	63	33	25	52	30	41	509
1955	44	36	45	55	48	56	64	44	44	32	40	40	548
1956	34	48	51	67	53	65	71	47	39	39	44	48	606
1957	50	41	46	58	52	54	57	53	51	46	32	49	589
1958	50	38	42	58	54	41	54	53	57	40	57	52	596
1959	50	57	61	50	75	55	42	48	52	55	63	63	671
1960	49	53	57	76	70	70	67	62	61	77	52	66	760
1961	63	57	68	74	58	68	78	82	59	62	60	65	794
1962	65	41	76	78	72	80	70	77	62	53	64	70	808
1963	67	56	65	85	66	68	77	55	55	58	61	67	780
1964	73	71	78	71	83	89	80	89	67	66	62	75	904
1965	63	64	86	88	80	87	79	69	81	77	68	87	929
1966	75	59	75	103	74	86	87	80	75	66	90	85	955
1967	61	79	91	97	81	71	59	67	70	68	60	83	887
1968	70	78	86	78	73	76	73	77	72	80	81	105	949
1969	79	68	79	87	86	77	87	83	87	83	94	101	1,011
1970	85	84	106	80	87	88	110	106	78	95	68	74	1,061
1971	83	75	77	68	76	86	85	72	78	73	74	76	923
1972	61	62	75	82	75	71	98	85	83	62	80	81	915
1973	75	75	95	85	64	66	61	85	89	88	66	86	935
1974	56	62	81	60	70	73	67	62	53	70	80	72	806
1975	67	65	87	73	97	94	57	75	69	66	71	89	910
1976	79	78	88	78	69	79	60	70	82	78	77	100	938
1977	65	71	89	79	65	79	70	91	68	74	96	107	954
1978	75	54	95	63	64	69	68	77	65	84	83	72	869
1979	63	60	86	75	45	64	66	75	69	79	72	93	847
1980	48	55	66	59	47	56	60	53	45	58	61	49	657
1981	69	60	58	61	74	65	61	63	68	71	59	57	766
1982	55	53	59	59	67	45	47	71	53	69	65	66	709
1983	42	59	53	63	62	61	65	51	59	43	54	52	664
1984	65	48	58	50	56	48	46	50	71	53	55	58	658
1985	56	47	50	65	75	50	51	50	58	61	56	64	683
1986	56	50	70	69	59	53	42	54	54	52	59	51	669
1987	62	43	57	52	63	59	62	49	62	61	55	80	705
1988	49	58	69	54	79	50	54	52	64	59	43	70	701
1989	76	65	80	59	67	73	52	65	82	50	41	66	776
1990	48	44	55	39	56	64	41	34	48	35	40	44	548
1991	45	39	70	30	34	29	44	47	41	36	35	53	503
1992	34	33	34	47	33	29	23	27	28	38	30	40	396
1993	27	40	37	39	44	33	33	27	34	39	43	40	436
1994	36	31	44	35	27	33	29	37	17	27	32	30	378
1995	38	35	26	33	34	41	27	34	34	32	38	46	418
1996	40	47	35	38	28	29	30	35	49	24	33	30	418
1997	36	25	30	30	40	22	39	26	26	29	39	35	377
1998	29	29	32	36	31	22	40	19	37	36	49	30	390
1999	32	31	35	35	34	24	35	26	28	38	29	37	384
2000	32	26	46	32	39	32	33	29	36	29	44	29	407
2001	44	30	31	32	31	41	34	37	35	51	41	37	444
2002	32	31	45	31	45	32	27	25	31	30	31	37	397
2003	21	41	36	28	31	28	20	23	23	24	24	31	330
2004	32	22	30	30	46	28	27	26	22	28	25	27	343
2005	33	27	47	21	29	23	30	25	25	33	17	36	346
2006	24	37	23	23	27	23	25	22	43	20	31	39	337
2007	23	23	32	25	26	28	28	20	23	37	26	41	332
2008	28	20	37	25	25	20	27	27	18	25	26	25	303
2009	31	18	23	32	19	30	19	21	14	28	21	34	290
2010	26	25	23	20	31	26	26	18	17	36	12	28	288
2011	18	20	34	31	30	24	25	14	12	22	30	27	287
2012	30	20	25	19	23	22	17	25	17	34	26	24	282
2013	14	24	24	19	18	14	24						
Ave	49	47	56	54	54	52	52	51	50	51	50	56	625
Max	85	84	106	103	97	94	110	106	89	95	96	107	1,061
Min	14	18	23	19	18	14	17	14	12	20	12	20	282

Fatalities by Week (2007 to 2013)

Week Ending	2007	2008	2009	2010	2011	2012	2013	Cumulative 2013	% Change 2013-2012	12 Month Moving Total
6-Jan	3	1	3	1	2	1	2	2	0%	283
13-Jan	2	8	11	6	1	3	3	5	+67%	283
20-Jan	7	5	6	1	6	9	5	10	+11%	279
27-Jan	5	4	2	9	4	7	4	14	+8%	276
3-Feb	5	8	8	6	4	9	6	20	+18%	273
10-Feb	7	5	1	9	8	4	7	27	+8%	276
17-Feb	4	4	10	5	3	2	4	31	+11%	278
24-Feb	10	4	3	8	5	10	6	37	+12%	274
3-Mar	3	8	5	4	4	4	2	39	+5%	272
10-Mar	9	8	2	6	8	1	5	44	-2%	276
17-Mar	9	5	6	5	6	4	5	49	-4%	277
24-Mar	3	13	3	4	9	12	10	59	-2%	275
31-Mar	8	7	7	8	8	4	3	62	-9%	274
7-Apr	4	10	8	5	5	7	4	66	-10%	271
14-Apr	11	3	5	4	12	6	5	71	-16%	270
21-Apr	4	6	8	6	5	2	5	76	-16%	273
28-Apr	3	6	10	4	6	6	5	81	-16%	272
5-May	7	5	6	4	7	2	5	86	-17%	275
12-May	3	7	7	3	4	10	4	90	-16%	269
19-May	6	4	4	9	7	2	2	92	-19%	269
26-May	8	8	1	6	11	5	11	103	-18%	275
2-Jun	6	6	3	12	4	5	3	106	-18%	273
9-Jun	15	2	7	2	5	4	7	113	-16%	276
16-Jun	3	6	6	7	9	6	6	119	-17%	276
23-Jun	4	4	8	8	3	4	7	126	-14%	279
30-Jun	7	7	6	5	6	7	3	129	-15%	275
7-Jul	2	5	7	8	5	4	5	134	-15%	276
14-Jul	9	10	9	4	10	2	8	142	-15%	282
21-Jul	7	2	2	3	5	4	3	145	-16%	281
28-Jul	6	3	5	5	8	5	5	150	-17%	281
4-Aug	5	8	3	10	2	5				
11-Aug	2	8	3	7	4	2				
18-Aug	2	6	11	3	6	4				
25-Aug	4	3	4	5	1	5				
1-Sep	11	7	1	2	1	10				
8-Sep	3	5	4	3	3	5				
15-Sep	7	3	1	4	3	4				
22-Sep	4	6	7	1	3	6				
29-Sep	8	6	2	6	1	4				
6-Oct	5	6	2	4	5	2				
13-Oct	12	8	2	12	7	8				
20-Oct	6	4	8	7	2	10				
27-Oct	8	4	9	8	3	8				
3-Nov	6	4	8	6	7	5				
10-Nov	6	4	4	5	5	5				
17-Nov	7	7	6	0	12	7				
24-Nov	4	10	6	3	8	7				
1-Dec	7	3	4	3	5	5				
8-Dec	8	4	5	7	7	8				
15-Dec	16	9	5	6	6	7				
22-Dec	5	3	11	6	7	4				
29-Dec	8	9	10	9	6	4				
31-Dec	8	2	5	4	3	6				
Total	332	303	290	288	287	282				

Alcohol Related Fatalities

NOTE: UPDATES TO THIS DATA WERE NOT AVAILABLE AT TIME OF REPORT

- 24% of fatally injured and tested drivers and riders had a BAC at 0.05 g/100ml or over (41 of 172) compared to 25% over the previous 12 month period (43 of 169).
- In Melbourne, 21 drivers/riders fatally injured and tested were at or over 0.05, with 38% of these having a BAC in excess of 0.15 g/100ml. Across rural Victoria, 20 drivers/riders fatally injured and tested were at or over 0.05, with 65% of these having a BAC over 0.15.
- Of the 41 drivers and riders fatally injured and tested at or over 0.05, 15% (6) were aged under 21, 39% (16) were aged 21-29, 27% (11) were aged 30-39 and 20% (8) were aged 40 years and over. In the previous year (43 fatally injured) the corresponding figures were 19% (8), 28% (12), 19% (8) and 35% (15), respectively.

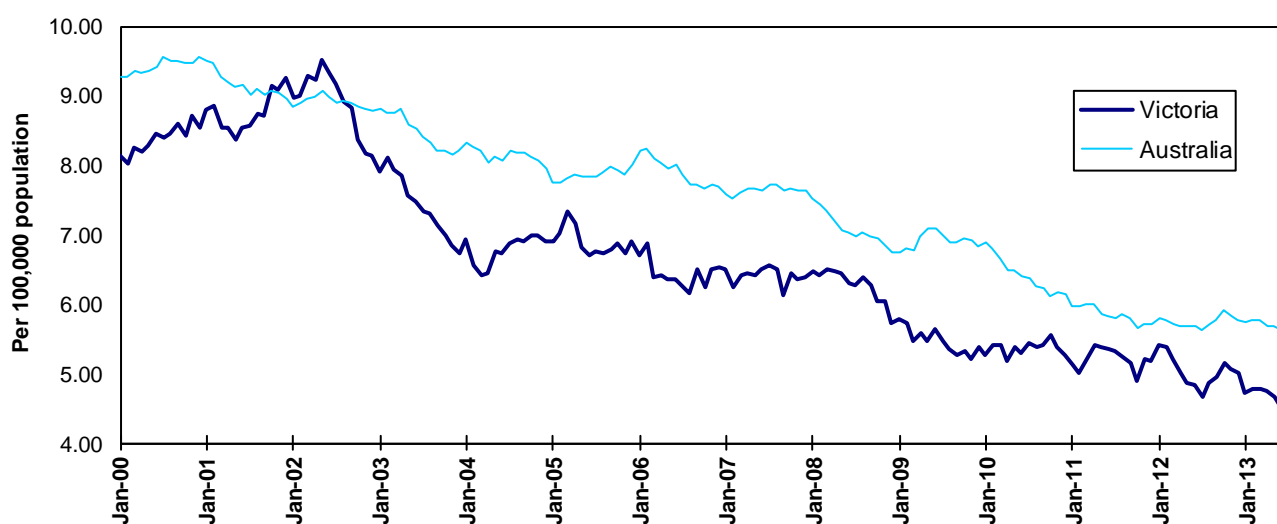
BAC Fatalities (12 months to April 2010)

Category	2010	2009	2008	2010 v 2009		2010 v 2008		5 Year Av
Melbourne Drivers and Riders								
<0.05	55	63	63	(-8)	(-13%)	(-8)	(-13%)	62
[a] at 0.05 & above	21	17	25	(+4)	(+24%)	(-4)	(-16%)	21
% at 0.05 & above	(28%)	(21%)	(28%)					(+25%)
[b] >0.15	8	10	12	(-2)	(-20%)	(-4)	(-33%)	9
%>0.15	(11%)	(13%)	(14%)					(+11%)
[b] as a % of [a]	(38%)	(59%)	(48%)					(+43%)
BAC Unknown	5	3	1	(+2)	(+67%)	(+4)	(+400%)	3
Country Drivers and Riders								
<0.05	76	63	90	(+13)	(+21%)	(-14)	(-16%)	78
[a] at 0.05 & above	20	26	32	(-6)	(-23%)	(-12)	(-38%)	26
% at 0.05 & above	(21%)	(29%)	(26%)					(+25%)
[b] >0.15	13	17	20	(-4)	(-24%)	(-7)	(-35%)	17
%>0.15	(14%)	(19%)	(16%)					(+16%)
[b] as a % of [a]	(65%)	(65%)	(63%)					(+64%)
BAC Unknown	7	2	1	(+5)	(+250%)	(+6)	(+600%)	5
Victorian Total Drivers and Riders								
<0.05	131	126	153	(+5)	(+4%)	(-22)	(-14%)	140
[a] at 0.05 & above	41	43	57	(-2)	(-5%)	(-16)	(-28%)	47
% at 0.05 & above	(24%)	(25%)	(27%)					(+25%)
[b] >0.15	21	27	32	(-6)	(-22%)	(-11)	(-34%)	26
%>0.15	(12%)	(16%)	(15%)					(+14%)
[b] as a % of [a]	(51%)	(63%)	(56%)					(+54%)
BAC Unknown	12	5	2	(+7)	(+140%)	(+10)	(+500%)	7
Victorian Total Pedestrians								
<0.05	32	35	38	(-3)	(-9%)	(-6)	(-16%)	33
[a] at 0.05 & above	8	21	9	(-13)	(-62%)	(-1)	(-11%)	14
% at 0.05 & above	(20%)	(38%)	(19%)					(+30%)
[b] >0.15	3	10	8	(-7)	(-70%)	(-5)	(-63%)	9
%>0.15	(8%)	(18%)	(17%)					(+19%)
[b] as a % of [a]	(38%)	(48%)	(89%)					(+62%)
BAC Unknown	6	4	2	(+2)	(+50%)	(+4)	(+200%)	4

The National Picture

State	Fatalities (12 months to June)					2013 v 2012	
	2013	2012	2011	2010			
NSW	356	380	361	441	-24	(-6%)	
VIC	263	261	293	295	+2	(+1%)	
QLD	299	270	253	260	+29	(+11%)	
SA	108	87	111	120	+21	(+24%)	
WA	179	189	188	189	-10	(-5%)	
TAS	33	22	29	32	+11	(+50%)	
NT	43	50	43	42	-7	(-14%)	
ACT	9	6	8	21	+3	(+50%)	
AUST TOTAL	1,290	1,265	1,286	1,400	+25	(+2%)	
AUST minus VIC	1,027	1,004	993	1,105	+23	(+2%)	

State	Fatalities per 10,000 registered vehicles (12 months to June)			Fatalities per 100,000 population (12 months to June)		
	2013	2012	2011	2013	2012	2011
NSW	0.72	0.78	0.76	4.85	5.24	5.03
VIC	0.60	0.61	0.70	4.63	4.67	5.32
QLD	0.83	0.77	0.74	6.49	6.00	5.68
SA	0.84	0.68	0.88	6.49	5.29	6.79
WA	0.88	0.96	0.98	7.23	7.92	8.07
TAS	0.74	0.51	0.69	6.44	4.29	5.69
NT	2.96	3.54	3.14	18.15	21.56	18.62
ACT	0.33	0.22	0.31	2.38	1.61	2.19
AUST TOTAL	0.75	0.76	0.79	5.67	5.63	5.79
AUST minus VIC	0.81	0.81	0.82	6.01	5.94	5.94



Victoria v Australia - 12 Month Moving Fatality Rate

Booze-Bus Random Breath Testing

12 months to May 2013 (monthly totals)*

	2012						2013					
	Jun	Jul	Aug	Sep	Oct	Nov	Dec	Jan	Feb	Mar	Apr	May
Melbourne	79,523	79,063	79,829	97,391	91,425	96,830	98,007	93,928	79,064	86,312	89,067	84,644
Country	7,285	3,932	7,314	4,599	10,101	16,705	13,751	7,046	7,258	8,046	9,786	8,335
Vic Total	86,808	82,995	87,143	101,990	101,526	113,535	111,758	100,974	86,322	94,358	98,853	92,979

12 months to May 2013 vs previous 12 months

	2013	2012	2011	2013 v 2012	2013 v 2011
Melbourne	1,062,075	958,953	1,016,549	+103122 (+11%)	+45526 (+4%)
Country	100,979	138,158	189,177	-37179 (-27%)	-88198 (-47%)
Vic Total	1,163,054	1,097,111	1,205,726	+65943 (+6%)	-42672 (-4%)

*Due to police industrial action, reliable random breath testing data is not available from May to October 2011. For the rolling 12 month totals, 2010 data has been used as a substitute in the relevant months.

Mobile Safety Camera Data

Speed Infringements Issued from Mobile Cameras (monthly totals)

Monthly Average = 42,032

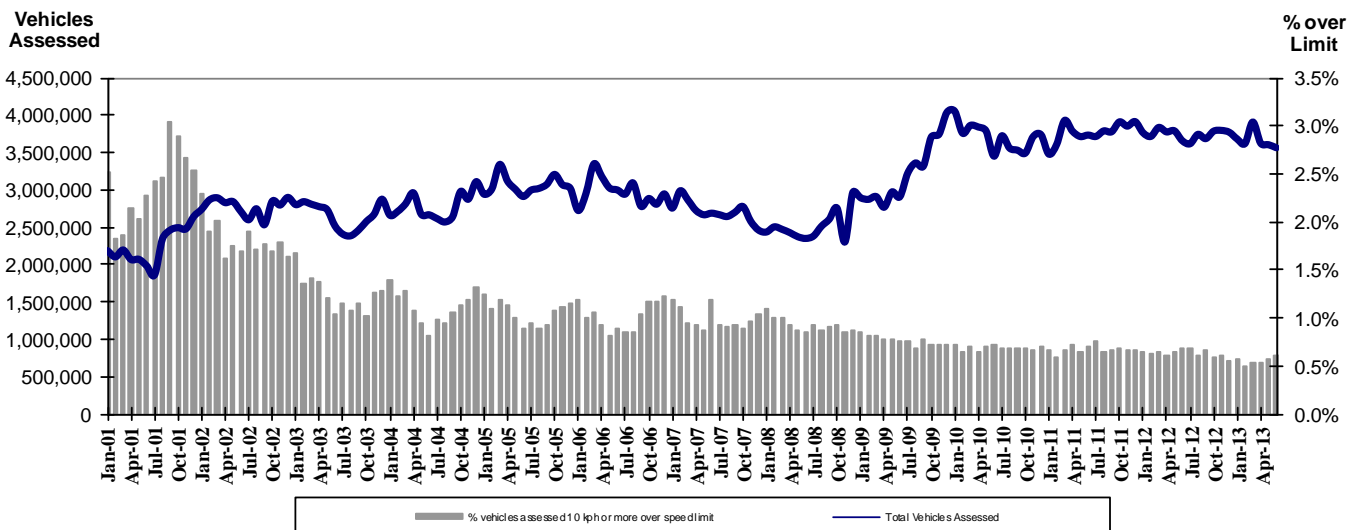
2012	2013										
	Jul	Aug	Sep	Oct	Nov	Dec	Jan	Feb	Mar	Apr	May
48,023	45,032	42,429	45,757	45,777	29,434	52,184	39,407	36,296	40,184	42,428	37,432

Excessive Speed Infringements (ESI) Issued from Mobile Cameras (monthly totals)

Monthly Average = 348

2012	2013										
	Jul	Aug	Sep	Oct	Nov	Dec	Jan	Feb	Mar	Apr	May
352	368	353	396	356	256	363	341	292	342	398	361

Notes: An ESI is defined as 25km/h over the speed limit except in a 110km/h zone where it is 20km/h over the limit.



Mobile Safety Cameras – Vehicles assessed and percentage of vehicles assessed 10km/h or more over speed limit per month

Explanations and References

Hi-AlcTime is those times of the day and week (*shaded* in the table below) when casualty crashes are ten times more likely to involve alcohol than casualty crashes at other (Lo-AlcTime) times.

	12am - 6am	6am - 8am	8am - 10am	10am - 2pm	2pm - 4pm	4pm - 6pm	6pm - 12pm
Monday							
Tuesday							
Wednesday							
Thursday							
Friday							
Saturday							
Sunday							

Police Service Areas align with Local Government Areas. Most Police Service Areas are equivalent to a single Local Government Area, while the remainder comprise two or three Local Government Areas.

Police Service Area	Local Government Area(s)	Police Service Area	Local Government Area(s)
BALLARAT	BALLARAT, PYRENEES	MAROONDAH	MAROONDAH
BANYULE	BANYULE	MELBOURNE	MELBOURNE
BASS COAST	BASS COAST, SOUTH GIPPSLAND	MELTON	MELTON
BAW BAW	BAWBAW	MILDURA	MILDURA
BENALLA	BENALLA, MANSFIELD, MURRINDINDI	MITCHELL	MITCHELL, STRATHBOGIE
BENDIGO	GREATER BENDIGO	MONASH	MONASH
BOROONDARA	BOROONDARA	MOONEE VALLEY	MOONEE VALLEY
BRIMBANK	BRIMBANK	MOORABOOL	GOLDEN PLAINS, HEPBURN, MOORABOOL
CAMPASPE	CAMPASPE	MORELAND	MORELAND
CARDINIA	CARDINIA	MORNINGTON PENINSULA	MORNINGTON PENINSULA
CASEY	CASEY	NILLUMBIK	NILLUMBIK
CENTRAL GOLDFIELDS	CENTRAL GOLDFIELDS, LODDON	NORTHERN GRAMPIANS	ARARAT, NORTHERN GRAMPIANS, YARRIAMIACK
GREATER DANDENONG	GREATER DANDENONG	PORT PHILLIP	PORT PHILLIP
DAREBIN	DAREBIN	SHEPPARTON	GREATER SHEPPARTON
EAST GIPPSLAND	EAST GIPPSLAND	SOUTHERN GRAMPIANS	GLENELG, SOUTHERN GRAMPIANS
FRANKSTON	FRANKSTON	STONNINGTON	STONNINGTON
GEELONG	GREATER GEELONG, QUEENSCLIFF	SURFCOAST	SURFCOAST, COLAC OTWAY
GLENEIRA	GLENEIRA, BAYSIDE	SWANHILL	BULOKE, GANNAWARRA, SWAN HILL
HOBSONS BAY	HOBSONSBAY	WANGARATTA	ALPINE, MOIRA, WANGARATTA
HORSHAM	HINDMARSH, HORSHAM, WESTWIMMERA	WARRNAMBOOL	CORANGAMITE, MOYNE, WARRNAMBOOL
HUME	HUME	WELLINGTON	WELLINGTON
KINGSTON	KINGSTON	WHITEHORSE	WHITEHORSE
KNOX	KNOX	WHITTLESEA	WHITTLESEA
LATROBE	LATROBE	WODONGA	INDIGO, TOWONG, WODONGA
MACEDON RANGES	MOUNT ALEXANDER, MACEDON RANGES	WYNDHAM	WYNDHAM
MANNINGHAM	MANNINGHAM	YARRA	YARRA
MARIBYRNONG	MARIBYRNONG	YARRA RANGES	YARRA RANGES

Useful Internet Sites

TAC Sites

- TAC Safety (Road Safety) www.tacsafety.com.au
- TAC How safe is your car www.howsafeisyourcar.com.au
- TAC Learners Log www.learnerslog.com.au
- TAC Motorcycle Safety Website www.spokes.com.au
- TAC Corporate site www.tac.vic.gov.au

Victorian Sites:

- VicRoads www.vicroads.vic.gov.au
- Victoria Police www.police.vic.gov.au
- Parliamentary Road Safety Committee www.parliament.vic.gov.au/rsc/
- ARRB Transport Research www.arrb.com.au
- RACV www.racv.com.au
- Monash University Accident Research Centre www.monash.edu.au/muarc
- Roadsafe www.roadsafe.org.au
- Cameras Save Lives www.camerassavelives.vic.gov.au

National and Interstate Sites:

- Australian Transport Safety Bureau www.atsb.gov.au
- Roads and Traffic Authority (NSW) www.rta.nsw.gov.au
- Queensland Transport - Road Safety transport.qld.gov.au/Home/Safety/Road
- Department of Transport (SA) www.transport.sa.gov.au/index.htm
- Main Roads Western Australia - Road Safety www.mrwa.wa.gov.au

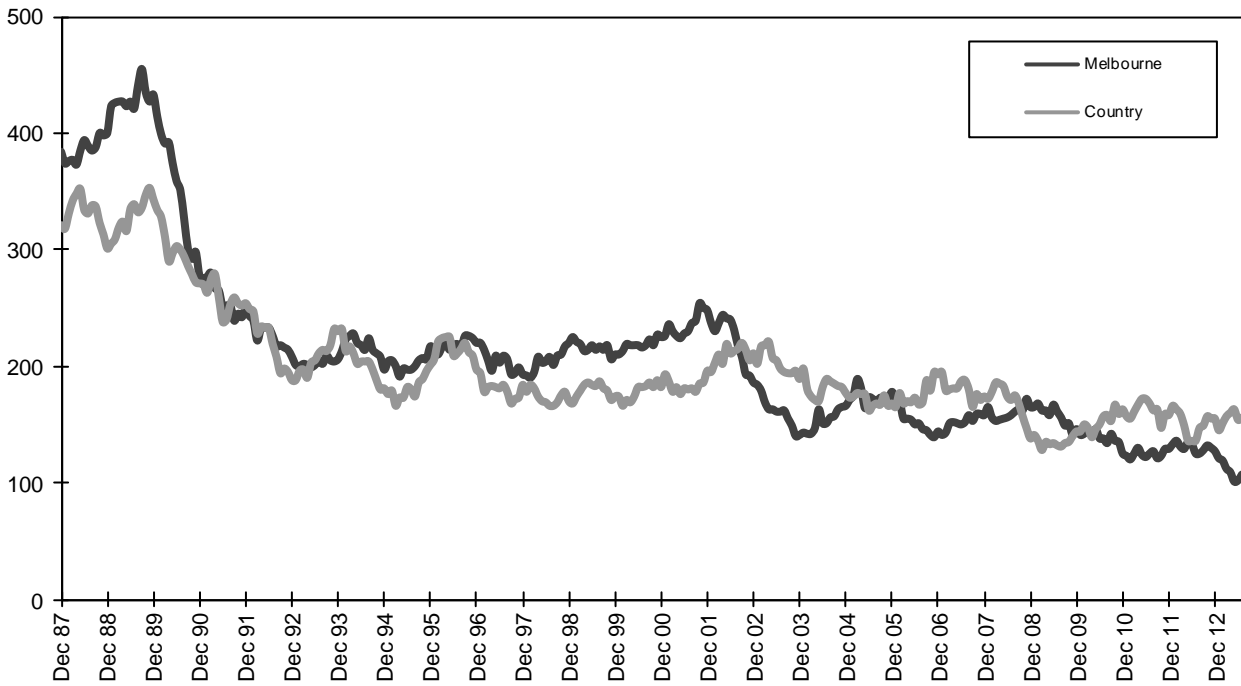
International Sites:

- National Highway Traffic Safety Admin (USA) www.nhtsa.dot.gov
- Swedish Road and Transport Institute (VTI) www.vti.se
- SWOV Institute for Road Safety Research www.swov.nl

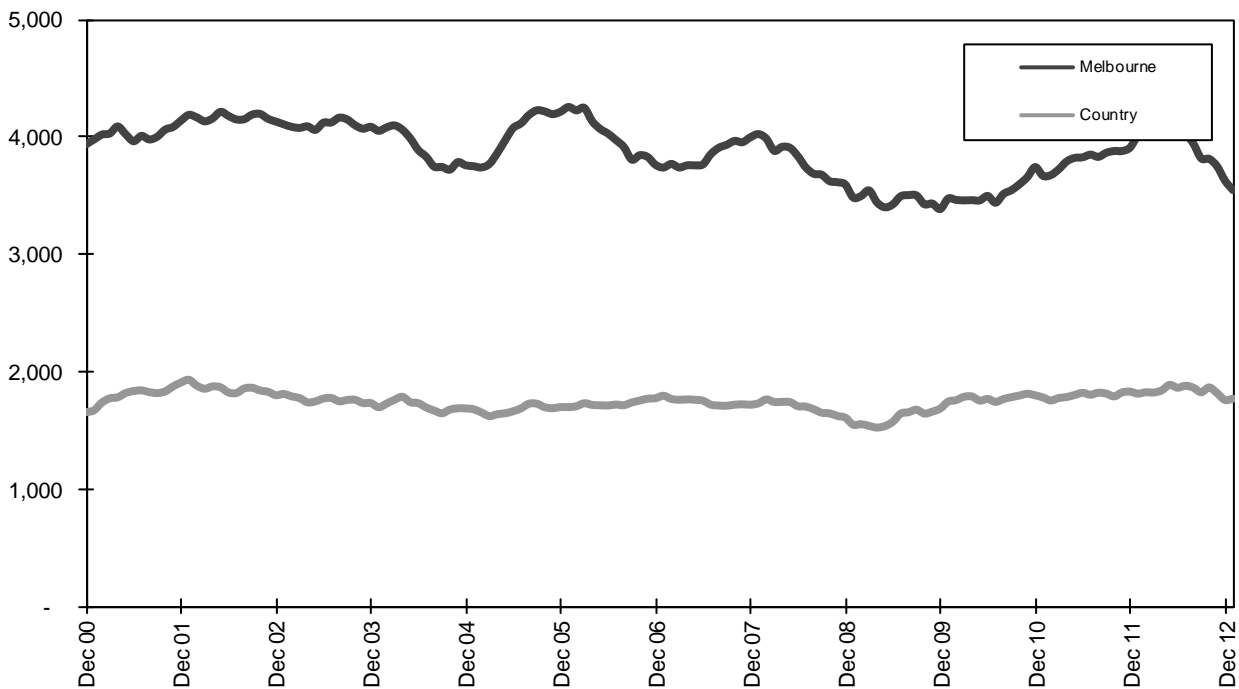
Related Sites:

- Australian Drug Foundation www.adf.org.au
- Amy Gillett Foundation www.amygillett.org.au

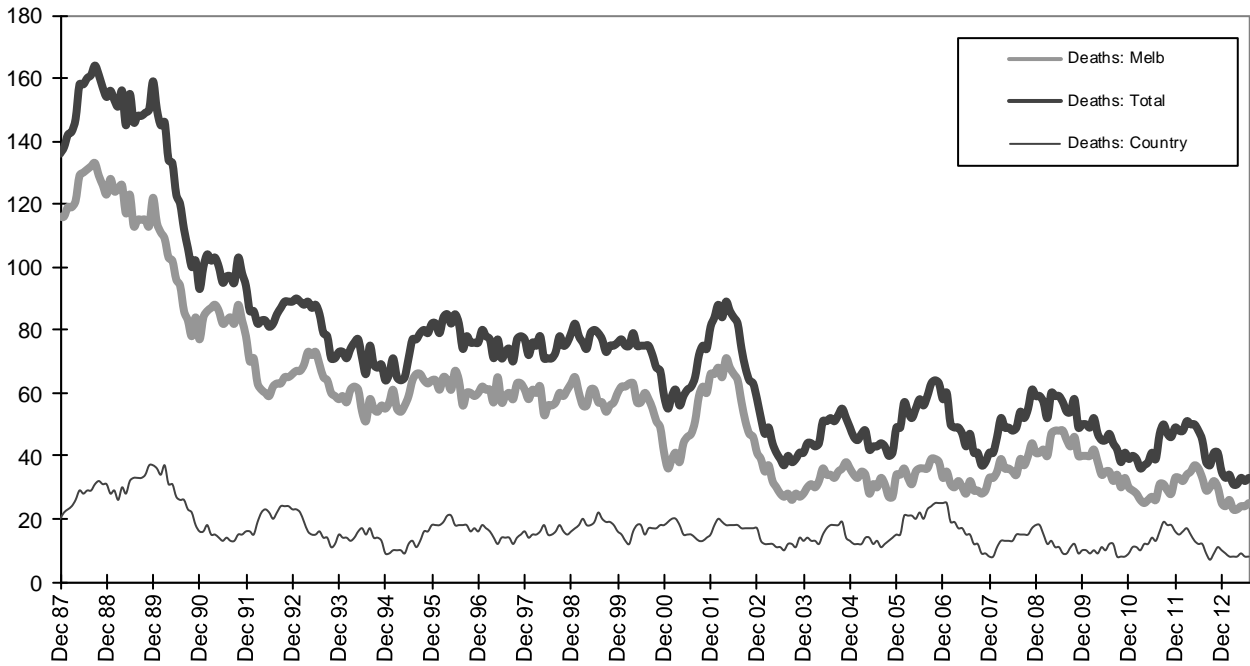
Figures



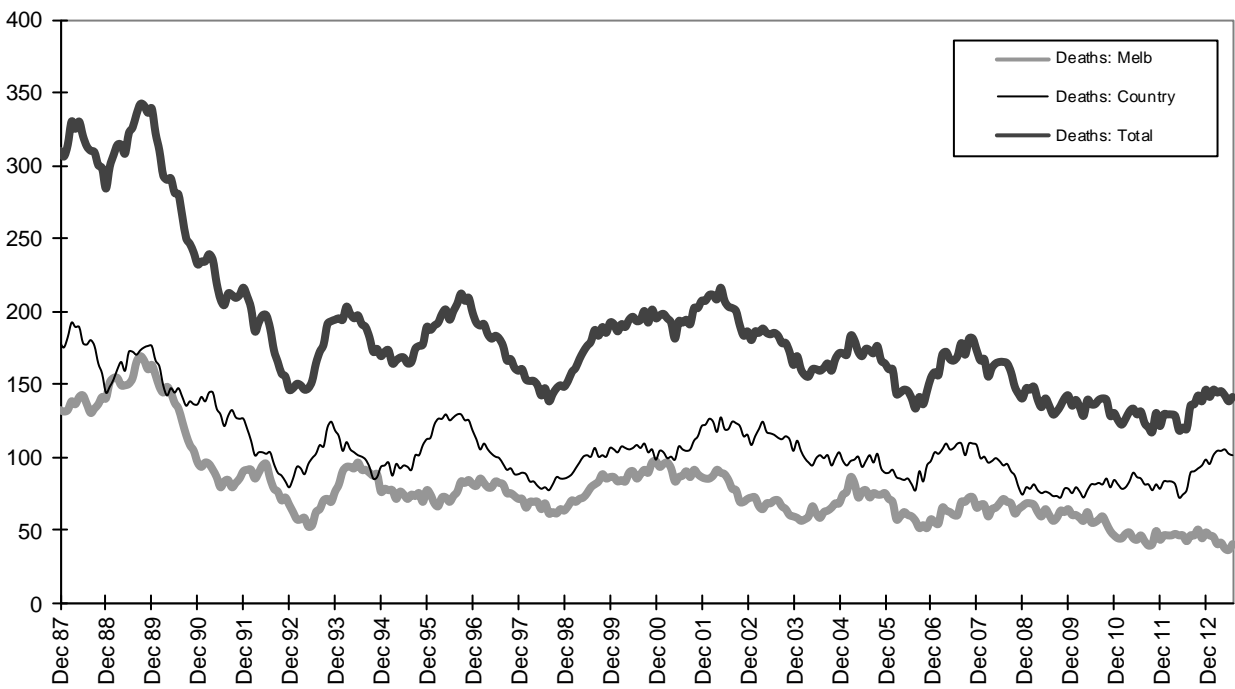
Graph 1a - Melbourne/country fatalities



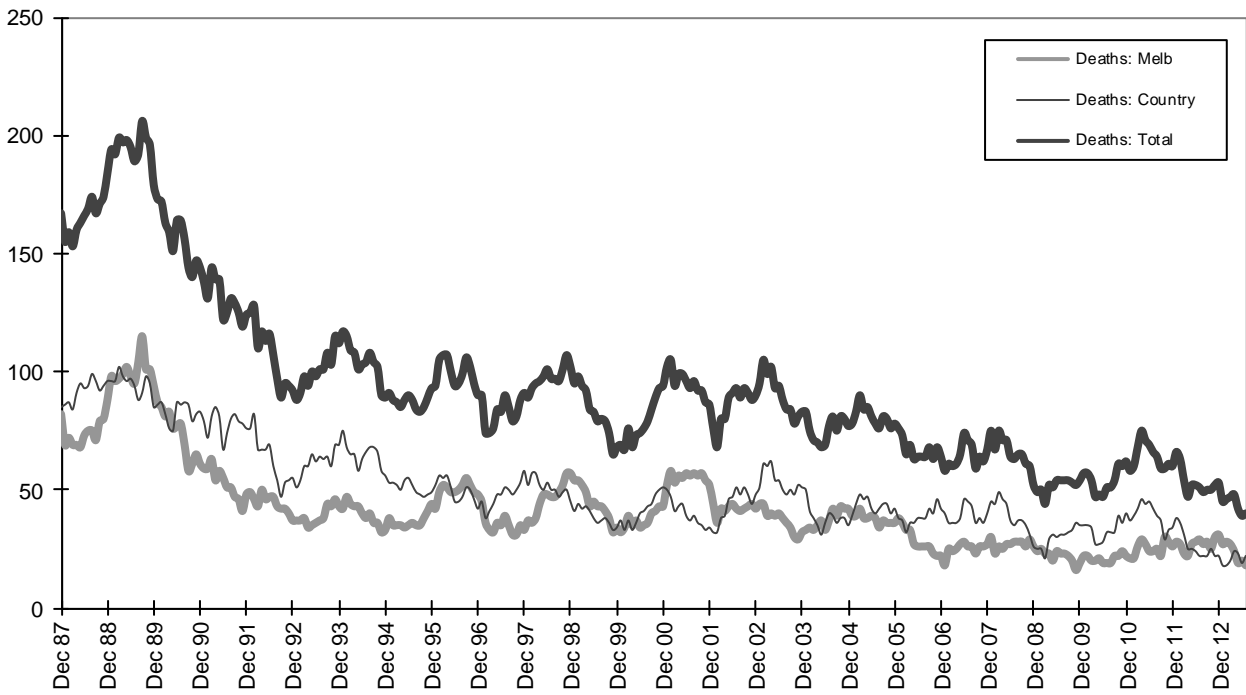
Graph 1b - Melbourne/country Claims involving an acute hospital admission



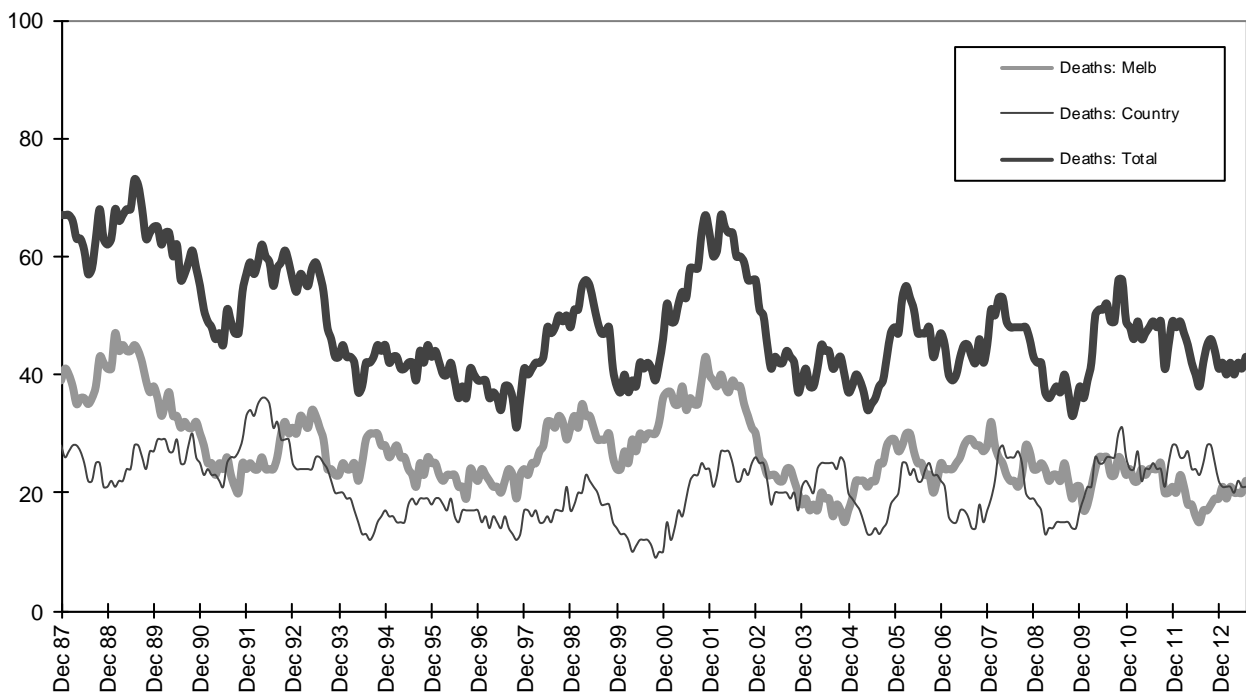
Graph 2a - Pedestrian fatalities (Melbourne/country)



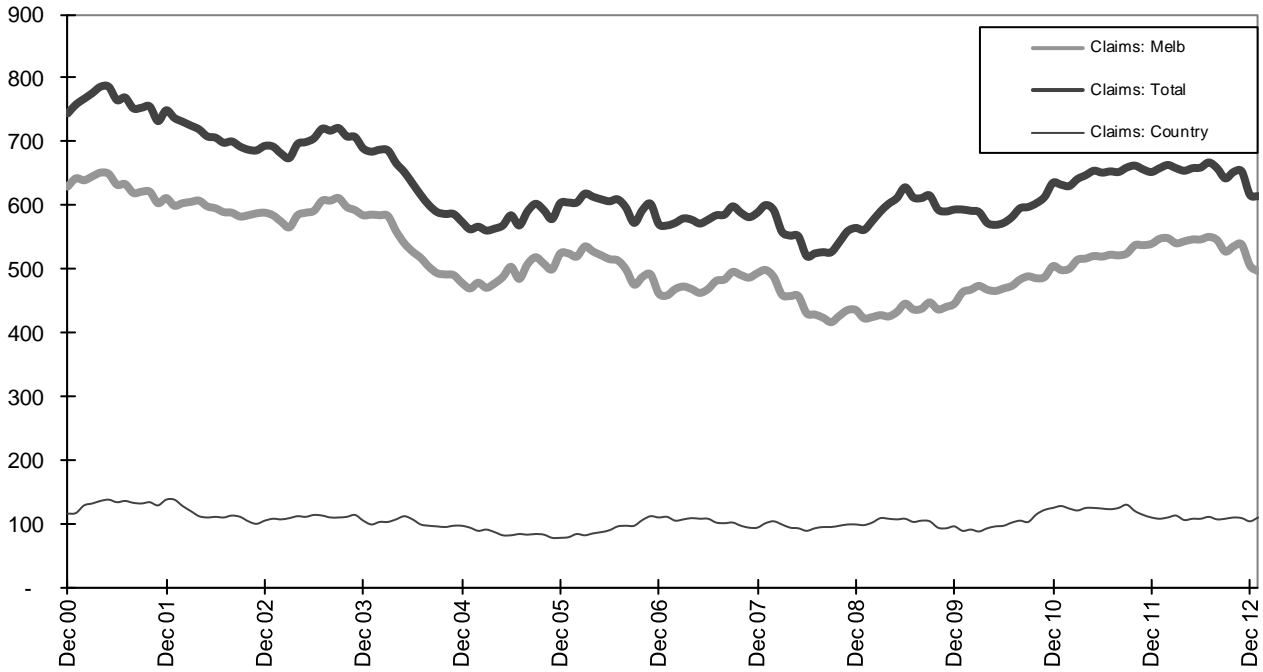
Graph 2b - Driver fatalities (Melbourne/country)



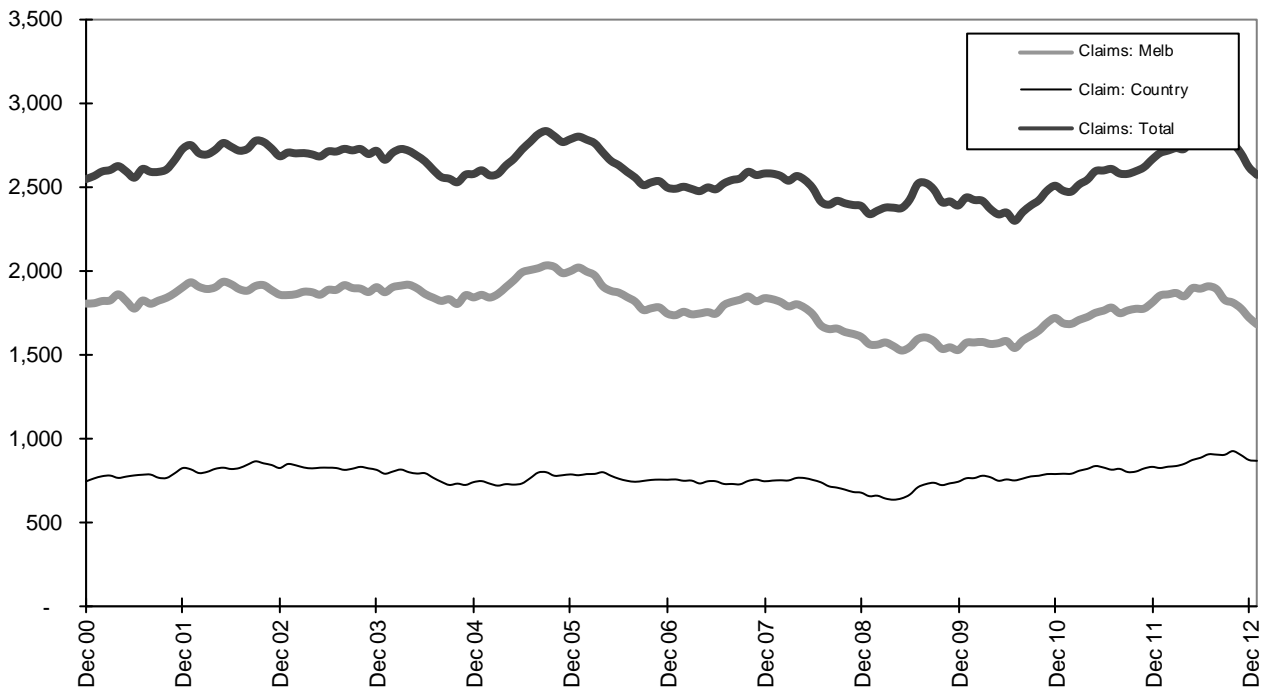
Graph 2c - Passenger fatalities (Melbourne/country)



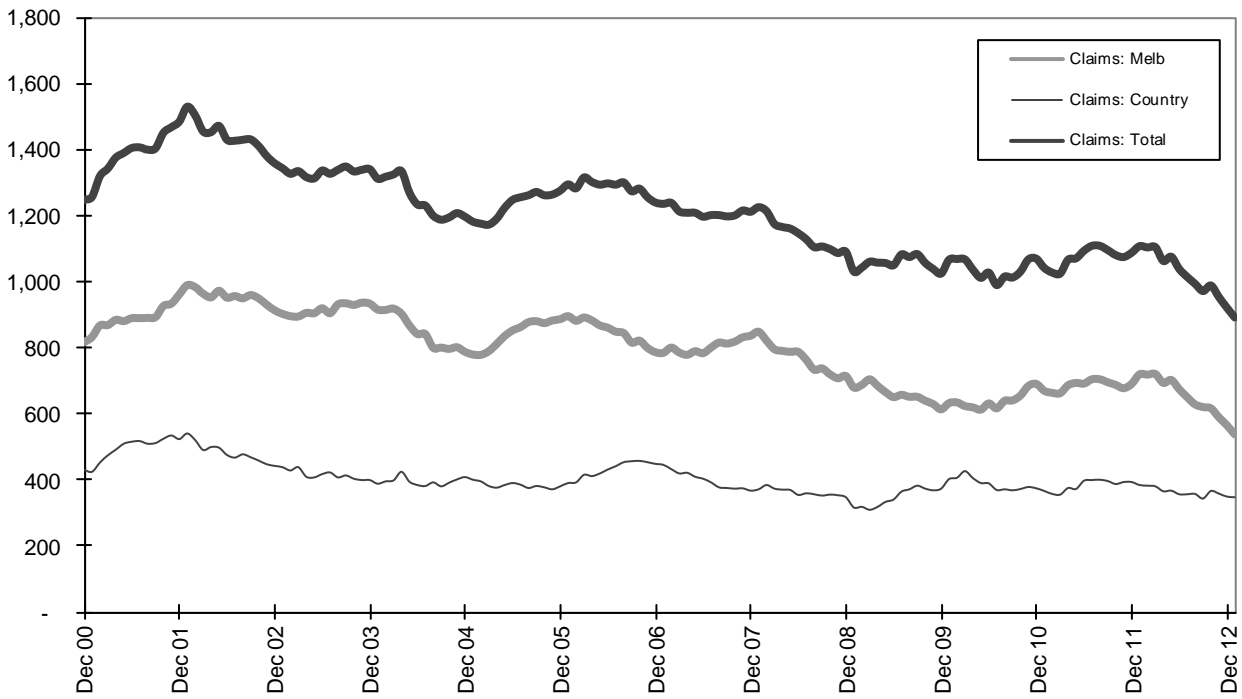
Graph 2d - Motorcyclist fatalities (Melbourne/country)



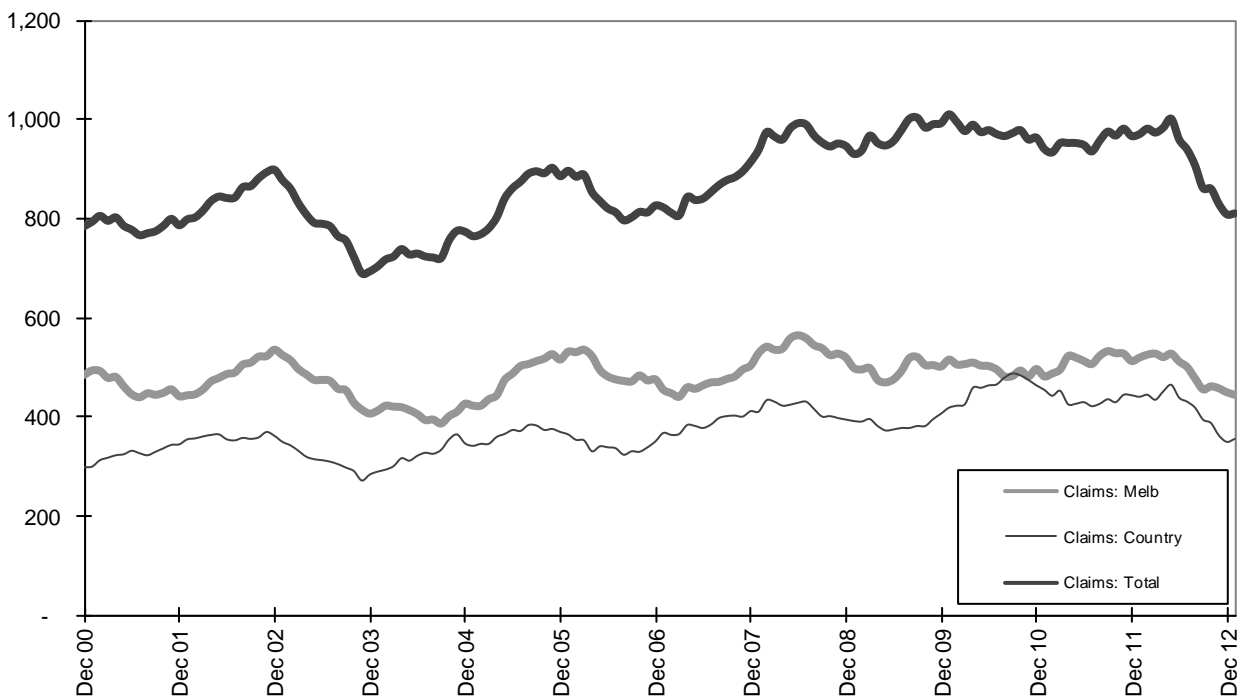
Graph 3a - Pedestrian Claims involving an acute hospital admission (Melbourne/country)



Graph 3b - Driver Claims involving an acute hospital admission (Melbourne/country)



Graph 3c - Passenger Claims involving an acute hospital admission (Melbourne/country)



Graph 3d - Motorcyclist Claims involving an acute hospital admission (Melbourne/country)