



ROAD SAFETY STATISTICAL SUMMARY

February 2011



TRANSPORT
ACCIDENT
COMMISSION

60 Brougham Street
Geelong Vic 3220
PO Box 742
Geelong Vic 3220
Ausdoc DX 216079 Geelong

Telephone 1300 654 329
STD Toll Free 1800 332 556
Fax: 03 9656 9300
www.tac.vic.gov.au
ABN 22 033 947 623



Contents

Status Report _____	3
Road Toll (updated snapshot)	
Tables _____	4-7
Fatalities (rolling 12 month)	
Claims involving hospitalisation (rolling 12 month)	
Overview	
Sex	
Road user	
Location	
Age Group	
Altime	
Accident Type	
Police Service Area	
Victorian Road Deaths – monthly totals since 1951 _____	8
Fatalities by Week (2006 to 2011) _____	9
Alcohol Related Deaths _____	10
The National Picture _____	11
Police Enforcement _____	12
Explanations and References _____	13-14
Alcohol times (“Altime”) explained	
Police Service Areas	
Useful internet sites	
Graphs (12 month moving totals) _____	15-19

Note about the data in this report

- All data provided in this report is the data most recently available at time of production. Typically, fatalities data is updated to the end of report month. Similarly, breath test data and safety camera data is updated to the end of the report month. A 6-month lag applies to TAC claims data, a 2-month lag applies to alcohol related fatalities data.

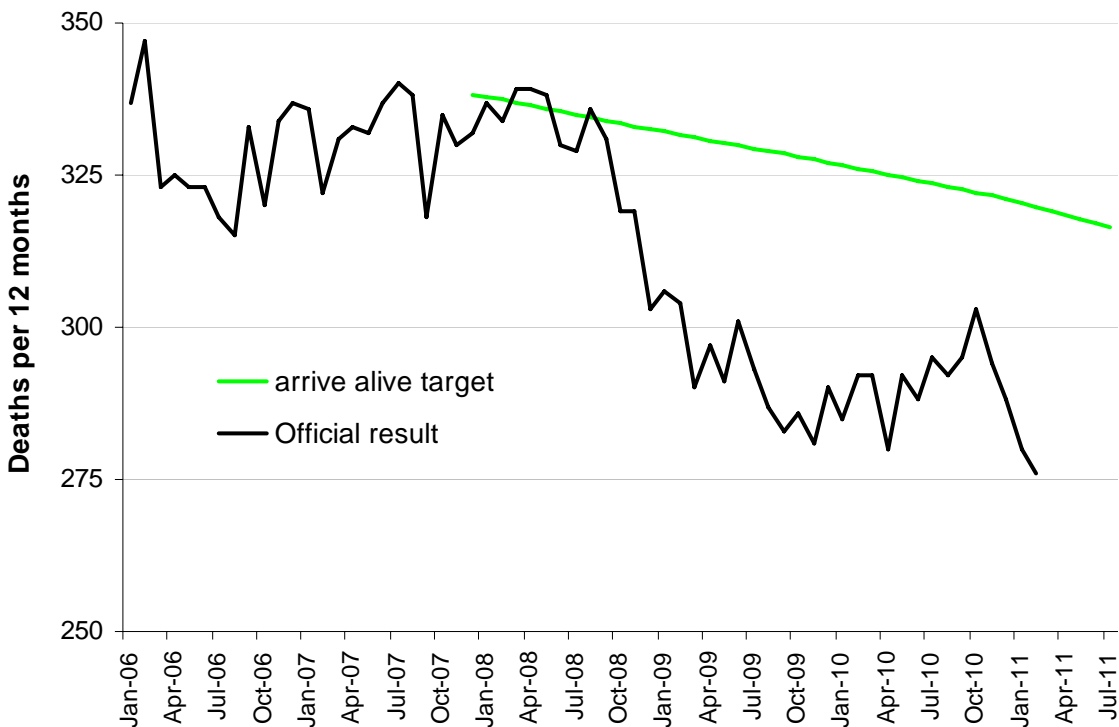
Status Report – Road Toll

Road Toll (year to date, accurate as at midnight 28 February 2011)

- The road toll in 2011 stands at 39, 24% less at the same stage in 2010 (51).
- 18 people died in January 2011 and 21 in February 2011 on Victorian roads. This compares to 26 in January 2010 and 25 in February 2010.

Category	2011	2010	2009	2011 v 2010	2011 v 2009	5 Year Av
Casualties (Rolling 12 Month Total)						
Fatal (to February)	276	292	304	-16	(-5%)	306
per 10,000 veh	0.66	0.72	0.77	-0.06	(-8%)	0.80
per 100,000 pop	4.96	5.36	5.72	-0.4	(-7%)	5.93
Accidents (Rolling 12 Month Total)						
Fatal (to February)	254	267	278	-13	(-5%)	278
per 10,000 veh	0.61	0.66	0.70	-0.05	(-8%)	0.73
per 100,000 pop	4.56	4.90	5.23	-0.34	(-7%)	5.38

Victoria – Fatalities, rolling 12 months total



Note: Data is subject to revision as additional information about known accidents is received, and as new accident reports are received and processed.

Fatalities: 12 months to February

Category	2011	2010	2009	2011 v 2010		2011 v 2009		5 Year Av
Overview								
Fatalities	276	292	304	-16	(-5%)	-28	(-9%)	306
Accidents	254	267	278	-13	(-5%)	-24	(-9%)	278
Sex								
Male	213	208	203	5	(2%)	10	(5%)	220
Female	63	84	101	-21	(-25%)	-38	(-38%)	85
Roaduser								
Bicyclist	8	8	9	0	(0%)	-1	(-11%)	9
Driver	124	139	146	-15	(-11%)	-22	(-15%)	146
Motorcyclist	46	39	42	7	(18%)	4	(10%)	43
Passenger	60	57	50	3	(5%)	10	(20%)	59
Pedestrian	38	49	57	-11	(-22%)	-19	(-33%)	48
Location								
Melbourne	120	142	169	-22	(-15%)	-49	(-29%)	146
Rural Victoria	156	150	135	6	(4%)	21	(16%)	160
Agegroup								
0-4	7	5	4	2	(40%)	3	(75%)	5
5-15	7	11	6	-4	(-36%)	1	(17%)	9
16-17	3	6	13	-3	(-50%)	-10	(-77%)	8
18-20	33	30	36	3	(10%)	-3	(-8%)	33
21-25	36	25	43	11	(44%)	-7	(-16%)	36
26-29	26	22	19	4	(18%)	7	(37%)	25
30-39	25	47	44	-22	(-47%)	-19	(-43%)	45
40-49	35	36	48	-1	(-3%)	-13	(-27%)	42
50-59	39	31	30	8	(26%)	9	(30%)	36
60-69	24	28	17	-4	(-14%)	7	(41%)	23
70+	41	51	44	-10	(-20%)	-3	(-7%)	45
Alctime								
High (Melb)	63	84	77	-21	(-25%)	-14	(-18%)	78
High (Rural)	87	65	67	22	(34%)	20	(30%)	77
High (Vic)	150	149	144	1	(1%)	6	(4%)	155
Low (Melb)	57	58	92	-1	(-2%)	-35	(-38%)	68
Low (Rural)	69	85	68	-16	(-19%)	1	(1%)	82
Low (Vic)	126	143	160	-17	(-12%)	-34	(-21%)	150
Accident Type								
Intersection								
Adjacent direction	30	18	23	12	(67%)	7	(30%)	25
Opposing direction	7	6	6	1	(17%)	1	(17%)	9
Mid-block/other								
Head on	34	39	36	-5	(-13%)	-2	(-6%)	39
Same direction	18	18	16	0	(0%)	2	(13%)	18
Manoeuvre/o'taking	16	18	21	-2	(-11%)	-5	(-24%)	16
On path	10	5	5	5	(100%)	5	(100%)	7
Single vehicle	118	128	127	-10	(-8%)	-9	(-7%)	131
Other (incl peds)	43	60	70	-17	(-28%)	-27	(-39%)	61

Fatalities: 12 months to February

Category	2011	2010	2009	2011 v 2010		2011 v 2009		5 Year Av
Police Service Area (based on Local Government Area (see p.13))								
BALLARAT	6	4	6	2	(50%)	0	(0%)	5
BANYULE	3	2	3	1	(50%)	0	(0%)	2
BASS COAST	3	8	4	-5	(-63%)	-1	(-25%)	6
BAW BAW	12	2	6	10	(500%)	6	(100%)	8
BAYSIDE	1	1	3	0	(0%)	-2	(-67%)	2
BENALLA	10	9	10	1	(11%)	0	(0%)	10
BENDIGO	9	11	6	-2	(-18%)	3	(50%)	10
BOROONDARA	1	5	7	-4	(-80%)	-6	(-86%)	4
BRIMBANK	2	6	7	-4	(-67%)	-5	(-71%)	6
CAMPASPE	5	7	6	-2	(-29%)	-1	(-17%)	9
CARDINIA	8	2	6	6	(300%)	2	(33%)	5
CASEY	13	10	11	3	(30%)	2	(18%)	12
CENTRAL GOLDFIELDS	8	0	3	8		5	(167%)	5
CORANGAMITE	5	10	1	-5	(-50%)	4	(400%)	6
DANDENONG	2	8	10	-6	(-75%)	-8	(-80%)	6
DAREBIN	3	3	6	0	(0%)	-3	(-50%)	4
EAST GIPPSLAND	7	11	11	-4	(-36%)	-4	(-36%)	10
FRANKSTON	4	4	13	0	(0%)	-9	(-69%)	5
GEELONG	11	11	4	0	(0%)	7	(175%)	7
GLEN EIRA	3	5	3	-2	(-40%)	0	(0%)	4
HOBSONS BAY	1	1	2	0	(0%)	-1	(-50%)	3
HORSHAM	5	3	2	2	(67%)	3	(150%)	4
HUME	5	8	8	-3	(-38%)	-3	(-38%)	7
KINGSTON	2	5	7	-3	(-60%)	-5	(-71%)	5
KNOX	2	6	3	-4	(-67%)	-1	(-33%)	4
LA TROBE	5	5	6	0	(0%)	-1	(-17%)	6
MACEDON RANGES	5	8	7	-3	(-38%)	-2	(-29%)	7
MANNINGHAM	2	6	4	-4	(-67%)	-2	(-50%)	3
MARIBYRNONG	1	2	1	-1	(-50%)	0	(0%)	2
MAROONDAH	1	1	1	0	(0%)	0	(0%)	2
MELBOURNE	2	3	8	-1	(-33%)	-6	(-75%)	6
MELTON	7	5	5	2	(40%)	2	(40%)	5
MILDURA	4	4	5	0	(0%)	-1	(-20%)	4
MITCHELL	9	7	8	2	(29%)	1	(13%)	8
MONASH	4	9	3	-5	(-56%)	1	(33%)	6
MOONEE VALLEY	2	3	4	-1	(-33%)	-2	(-50%)	4
MOORABOOL	8	3	9	5	(167%)	-1	(-11%)	6
MORELAND	6	3	5	3	(100%)	1	(20%)	4
MORNINGTON PENINSULA	11	7	10	4	(57%)	1	(10%)	10
NILLUMBIK	2	1	1	1	(100%)	1	(100%)	1
NORTHERN GRAMPPIANS	4	3	3	1	(33%)	1	(33%)	4
PORT PHILLIP	3	1	2	2	(200%)	1	(50%)	2
SHEPPARTON	4	3	7	1	(33%)	-3	(-43%)	6
SOUTHERN GRAMPPIANS	5	7	4	-2	(-29%)	1	(25%)	6
STONNINGTON	1	0	1	1		0	(0%)	1
SURF COAST	5	4	5	1	(25%)	0	(0%)	4
SWAN HILL	4	5	6	-1	(-20%)	-2	(-33%)	9
WANGARATTA	11	10	3	1	(10%)	8	(267%)	7
WARRNAMBOOL	3	5	3	-2	(-40%)	0	(0%)	5
WELLINGTON	4	4	9	0	(0%)	-5	(-56%)	6
WHITEHORSE	7	5	2	2	(40%)	5	(250%)	4
WHITTLESEA	8	13	6	-5	(-38%)	2	(33%)	8
WODONGA	4	6	1	-2	(-33%)	3	(300%)	4
WYNDHAM	3	5	8	-2	(-40%)	-5	(-63%)	4
YARRA	5	3	2	2	(67%)	3	(150%)	3
YARRA RANGES	5	9	17	-4	(-44%)	-12	(-71%)	11

Claims involving hospital admission: 12 months to August (claim acceptance date)

Category	2010	2009	2008	2010 v 2009	2010 v 2008	5 Year Av
Overview						
Hospital admission claims	5,297	5,685	5,633	-388	(-7%)	5581
Sex						
Male	3,074	3,360	3,321	-286	(-9%)	3249
Female	2,220	2,325	2,312	-105	(-5%)	2332
Roaduser						
Bicyclist	332	314	291	18	(6%)	297
Driver	2,335	2,517	2,387	-182	(-7%)	2466
Motorcyclist	959	1,000	967	-41	(-4%)	918
Passenger	1,009	1,065	1,101	-56	(-5%)	1136
Pedestrian	596	608	525	-12	(-2%)	582
Tram/train	20	22	5	-2	(-9%)	12
Location						
Melbourne	3,497	3,472	3,673	25	(1%)	3692
Rural Victoria	1770	1683	1685	87	(5%)	1714
Agegroup						
0-4	44	57	48	-13	(-23%)	50
5-15	215	191	242	24	(13%)	226
16-17	133	161	159	-28	(-17%)	167
18-20	530	622	603	-92	(-15%)	603
21-25	634	725	750	-91	(-13%)	731
26-29	423	446	421	-23	(-5%)	432
30-39	881	956	949	-75	(-8%)	954
40-49	771	863	809	-92	(-11%)	811
50-59	655	617	649	38	(6%)	616
60-69	403	430	451	-27	(-6%)	408
70+	608	617	552	-9	(-1%)	583
Alctime						
High (Melb)	1526	1637	1661	-111	(-7%)	1691
High (Rural)	779	771	732	8	(1%)	746
High (Vic)	2320	2696	2583	-376	(-14%)	2540
Low (Melb)	1971	1835	2012	136	(7%)	2001
Low (Rural)	991	912	953	79	(9%)	969
Low (Vic)	2977	2989	3050	-12	(-0%)	3041
Accident Type						
Intersection						
Adjacent direction	781	905	829	-124	(-14%)	848
Opposing direction	425	441	455	-16	(-4%)	438
Mid-block/other						
Head on	288	337	323	-49	(-15%)	315
Same direction	811	777	787	34	(4%)	763
Manoeuvre/o'taking	317	335	316	-18	(-5%)	303
On path	220	221	193	-1	(-0%)	201
Single vehicle	1590	1707	1642	-117	(-7%)	1657
Other (incl peds)	865	952	721	-87	(-9%)	783

Note: excludes rejected claims and claims for interstate crashes

Claims involving hospital admission: 12 months to August (claim acceptance date)

Category	2010	2009	2008	2010 v 2009		2010 v 2008		5 Year Av
Police Service Area (based on Local Government Area (see p.13))								
BALLARAT	75	77	68	-2	(-3%)	7	(10%)	68
BANYULE	54	61	70	-7	(-11%)	-16	(-23%)	65
BASS COAST	82	58	93	24	(41%)	-11	(-12%)	85
BAW BAW	46	42	40	4	(10%)	6	(15%)	45
BAYSIDE	75	61	52	14	(23%)	23	(44%)	68
BENALLA	128	78	89	50	(64%)	39	(44%)	88
BENDIGO	82	91	93	-9	(-10%)	-11	(-12%)	86
BOROONDARA	139	125	123	14	(11%)	16	(13%)	139
BRIMBANK	111	158	168	-47	(-30%)	-57	(-34%)	151
CAMPASPE	75	75	70	0	(0%)	5	(7%)	82
CARDINIA	78	91	86	-13	(-14%)	-8	(-9%)	81
CASEY	226	211	204	15	(7%)	22	(11%)	224
CENTRAL GOLDFIELDS	31	17	23	14	(82%)	8	(35%)	21
CORANGAMITE	78	66	61	12	(18%)	17	(28%)	66
DANDENONG	174	135	180	39	(29%)	-6	(-3%)	173
DAREBIN	111	96	105	15	(16%)	6	(6%)	108
EAST GIPPSLAND	62	41	59	21	(51%)	3	(5%)	55
FRANKSTON	127	153	121	-26	(-17%)	6	(5%)	132
GEELONG	216	238	232	-22	(-9%)	-16	(-7%)	232
GLEN EIRA	100	94	107	6	(6%)	-7	(-7%)	105
HOBSONS BAY	67	54	86	13	(24%)	-19	(-22%)	70
HORSHAM	29	17	26	12	(71%)	3	(12%)	32
HUME	146	157	158	-11	(-7%)	-12	(-8%)	158
KINGSTON	125	128	143	-3	(-2%)	-18	(-13%)	136
KNOX	110	118	134	-8	(-7%)	-24	(-18%)	129
LA TROBE	63	41	55	22	(54%)	8	(15%)	54
MACEDON RANGES	92	68	72	24	(35%)	20	(28%)	76
MANNINGHAM	70	62	70	8	(13%)	0	(0%)	71
MARIBYRNONG	56	64	90	-8	(-13%)	-34	(-38%)	71
MAROONDAH	73	70	62	3	(4%)	11	(18%)	71
MELBOURNE	200	188	153	12	(6%)	47	(31%)	189
MELTON	54	42	52	12	(29%)	2	(4%)	49
MILDURA	26	28	35	-2	(-7%)	-9	(-26%)	33
MITCHELL	116	99	124	17	(17%)	-8	(-6%)	113
MONASH	151	159	163	-8	(-5%)	-12	(-7%)	162
MOONEE VALLEY	90	97	102	-7	(-7%)	-12	(-12%)	109
MOORABOOL	78	138	90	-60	(-43%)	-12	(-13%)	88
MORELAND	128	119	135	9	(8%)	-7	(-5%)	136
MORNINGTON PENINSULA	138	166	166	-28	(-17%)	-28	(-17%)	170
NILLUMBIK	33	31	28	2	(6%)	5	(18%)	31
NORTHERN GRAMPPIANS	26	33	39	-7	(-21%)	-13	(-33%)	36
PORT PHILLIP	95	109	150	-14	(-13%)	-55	(-37%)	130
SHEPPARTON	59	93	62	-34	(-37%)	-3	(-5%)	82
SOUTHERN GRAMPPIANS	40	36	36	4	(11%)	4	(11%)	39
STONNINGTON	115	112	112	3	(3%)	3	(3%)	114
SURF COAST	41	59	35	-18	(-31%)	6	(17%)	49
SWAN HILL	35	44	43	-9	(-20%)	-8	(-19%)	43
WANGARATTA	74	63	65	11	(17%)	9	(14%)	65
WARRNAMBOOL	70	38	29	32	(84%)	41	(141%)	47
WELLINGTON	74	66	63	8	(12%)	11	(17%)	63
WHITEHORSE	121	111	133	10	(9%)	-12	(-9%)	134
WHITTLESEA	130	117	109	13	(11%)	21	(19%)	112
WODONGA	67	49	72	18	(37%)	-5	(-7%)	57
WYNDHAM	100	107	126	-7	(-7%)	-26	(-21%)	116
YARRA	117	95	87	22	(23%)	30	(34%)	96
YARRA RANGES	188	205	209	-17	(-8%)	-21	(-10%)	201

Victorian Road Deaths: monthly totals since 1951

Year	Jan	Feb	Mar	Apr	May	Jun	Jul	Aug	Sep	Oct	Nov	Dec	Totals
1951							61	59	52	38	29	41	
1952	45	40	54	61	54	69	67	55	44	44	31	20	584
1953	23	28	54	58	49	42	50	37	44	27	36	32	480
1954	44	42	28	60	55	36	63	33	25	52	30	41	509
1955	44	36	45	55	48	56	64	44	44	32	40	40	548
1956	34	48	51	67	53	65	71	47	39	39	44	48	606
1957	50	41	46	58	52	54	57	53	51	46	32	49	589
1958	50	38	42	58	54	41	54	53	57	40	57	52	596
1959	50	57	61	50	75	55	42	48	52	55	63	63	671
1960	49	53	57	76	70	70	67	62	61	77	52	66	760
1961	63	57	68	74	58	68	78	82	59	62	60	65	794
1962	65	41	76	78	72	80	70	77	62	53	64	70	808
1963	67	56	65	85	66	68	77	55	55	58	61	67	780
1964	73	71	78	71	83	89	80	89	67	66	62	75	904
1965	63	64	86	88	80	87	79	69	81	77	68	87	929
1966	75	59	75	103	74	86	87	80	75	66	90	85	955
1967	61	79	91	97	81	71	59	67	70	68	60	83	887
1968	70	78	86	78	73	76	73	77	72	80	81	105	949
1969	79	68	79	87	86	77	87	83	87	83	94	101	1,011
1970	85	84	106	80	87	88	110	106	78	95	68	74	1,061
1971	83	75	77	68	76	86	85	72	78	73	74	76	923
1972	61	62	75	82	75	71	98	85	83	62	80	81	915
1973	75	75	95	85	64	66	61	85	89	88	66	86	935
1974	56	62	81	60	70	73	67	62	53	70	80	72	806
1975	67	65	87	73	97	94	57	75	69	66	71	89	910
1976	79	78	88	78	69	79	60	70	82	78	77	100	938
1977	65	71	89	79	65	79	70	91	68	74	96	107	954
1978	75	54	95	63	64	69	68	77	65	84	83	72	869
1979	63	60	86	75	45	64	66	75	69	79	72	93	847
1980	48	55	66	59	47	56	60	53	45	58	61	49	657
1981	69	60	58	61	74	65	61	63	68	71	59	57	766
1982	55	53	59	59	67	45	47	71	53	69	65	66	709
1983	42	59	53	63	62	61	65	51	59	43	54	52	664
1984	65	48	58	50	56	48	46	50	71	53	55	58	658
1985	56	47	50	65	75	50	51	50	58	61	56	64	683
1986	56	50	70	69	59	53	42	54	54	52	59	51	669
1987	62	43	57	52	63	59	62	49	62	61	55	80	705
1988	49	58	69	54	79	50	54	52	64	59	43	70	701
1989	76	65	80	59	67	73	52	65	82	50	41	66	776
1990	48	44	55	39	56	64	41	34	48	35	40	44	548
1991	45	39	70	30	34	29	44	47	41	36	35	53	503
1992	34	33	34	47	33	29	23	27	28	38	30	40	396
1993	27	40	37	39	44	33	33	27	34	39	43	40	436
1994	36	31	44	35	27	33	29	37	17	27	32	30	378
1995	38	35	26	33	34	41	27	34	34	32	38	46	418
1996	40	47	35	38	28	29	30	35	49	24	33	30	418
1997	36	25	30	30	40	22	39	26	26	29	39	35	377
1998	29	29	32	36	31	22	40	19	37	36	49	30	390
1999	32	31	35	35	34	24	35	26	28	38	29	37	384
2000	32	26	46	32	39	32	33	29	36	29	44	29	407
2001	44	30	31	32	31	41	34	37	35	51	41	37	444
2002	32	31	45	31	45	32	27	25	31	30	31	37	397
2003	21	41	36	28	31	28	20	23	23	24	24	31	330
2004	32	22	30	30	46	28	27	26	22	28	25	27	343
2005	33	27	47	21	29	23	30	25	25	33	17	36	346
2006	24	37	23	23	27	23	25	22	43	20	31	39	337
2007	23	23	32	25	26	28	28	20	23	37	26	41	332
2008	28	20	37	25	25	20	27	27	18	25	26	25	303
2009	31	18	23	32	19	30	19	21	14	28	21	34	290
2010	26	25	23	20	31	26	26	18	17	36	12	28	288
2011	18	21											39
Ave	50	48	58	56	55	53	53	52	51	51	51	57	637
Max	85	84	106	103	97	94	110	106	89	95	96	107	1,061
Min	18	18	23	20	19	20	19	18	14	20	12	20	288

Fatalities by Week (2006 to 2011)

Week Ending	2006	2007	2008	2009	2010	2011	Cumulative 2010	% Change 2010-2009	12 Month Moving Total
2-Jan	3	3	1	3	1	2	2	100%	289
9-Jan	3	2	8	11	6	2	4	-43%	285
16-Jan	4	7	5	6	1	6	10	25%	290
23-Jan	9	5	4	2	9	4	14	-18%	285
30-Jan	5	5	8	8	6	3	17	-26%	282
6-Feb	4	7	5	1	9	8	25	-22%	281
13-Feb	6	4	4	10	5	3	28	-24%	279
20-Feb	18	10	4	3	8	5	33	-27%	276
27-Feb	8	3	8	5	4	5	38	-22%	277
6-Mar	3	9	8	2	6	8	46	-16%	279
13-Mar	6	9	5	6	5	6	52	-13%	280
20-Mar	3	3	13	3	4	8	60	-6%	284
27-Mar	8	8	7	7	8	6	66	-8%	282
3-Apr	5	4	10	8	5				
10-Apr	4	11	3	5	4				
17-Apr	3	4	6	8	6				
24-Apr	2	3	6	10	4				
1-May	13	7	5	6	4				
8-May	11	3	7	7	3				
15-May	3	6	4	4	9				
22-May	4	8	8	1	6				
29-May	8	6	6	3	12				
5-Jun	6	15	2	7	2				
12-Jun	4	3	6	6	7				
19-Jun	7	4	4	8	8				
26-Jun	6	7	7	6	5				
3-Jul	1	2	5	7	8				
10-Jul	7	9	10	9	4				
17-Jul	7	7	2	2	3				
24-Jul	7	6	3	5	5				
31-Jul	4	5	8	3	10				
7-Aug	7	2	8	3	7				
14-Aug	4	2	6	11	3				
21-Aug	5	4	3	4	5				
28-Aug	5	11	7	1	2				
4-Sep	2	3	5	4	3				
11-Sep	5	7	3	1	4				
18-Sep	13	4	6	7	1				
25-Sep	12	8	6	2	6				
2-Oct	12	5	6	2	4				
9-Oct	9	12	8	2	12				
16-Oct	5	6	4	8	7				
23-Oct	4	8	4	9	8				
30-Oct	1	6	4	8	6				
6-Nov	10	6	4	4	5				
13-Nov	2	7	7	6	0				
20-Nov	9	4	10	6	3				
27-Nov	8	7	3	4	3				
4-Dec	16	8	4	5	7				
11-Dec	4	16	9	5	6				
18-Dec	6	5	3	11	6				
25-Dec	11	8	9	10	9				
31-Dec	5	8	2	5	4				
Total	337	332	303	290	288	66			

Alcohol Related Deaths

NOTE: UPDATES TO THIS DATA WERE NOT AVAILABLE AT TIME OF REPORT

BAC Fatalities (12 months to April 2010)

- 24% of killed and tested drivers and riders had a BAC at 0.05 g/100ml or over (41 of 172) compared to 25% over the previous 12 month period (43 of 169).
- In Melbourne, 21 drivers/riders killed and tested were at or over 0.05, with 38% of these having a BAC in excess of 0.15 g/100ml. Across rural Victoria, 20 drivers/riders killed and tested were at or over 0.05, with 65% of these having a BAC over 0.15.
- Of the 41 drivers and riders killed and tested at or over 0.05, 15% (6) were aged under 21, 39% (16) were aged 21-29, 27% (11) were aged 30-39 and 20% (8) were aged 40 years and over. In the previous year (43 killed) the corresponding figures were 19% (8), 28% (12), 19% (8) and 35% (15), respectively.

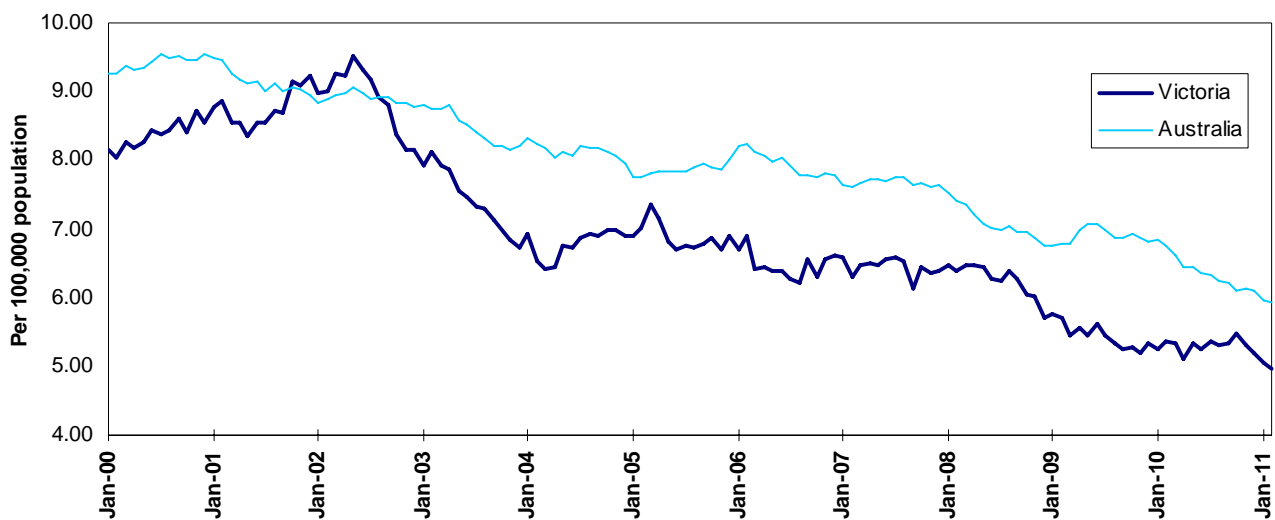
Category	2010	2009	2008	2010 v 2009	2010 v 2008	5 Year Av
Melbourne Drivers and Riders						
<0.05	55	63	63	-8	(-13%)	62
[a] at 0.05 & above	21	17	25	4	(24%)	21
% at 0.05 & above	(28%)	(21%)	(28%)			(25%)
[b] >0.15	8	10	12	-2	(-20%)	9
%>0.15	(11%)	(13%)	(14%)			(11%)
[b] as a % of [a]	(38%)	(59%)	(48%)			(43%)
BAC Unknown	5	3	1	2	(67%)	3
Country Drivers and Riders						
<0.05	76	63	90	13	(21%)	78
[a] at 0.05 & above	20	26	32	-6	(-23%)	26
% at 0.05 & above	(21%)	(29%)	(26%)			(25%)
[b] >0.15	13	17	20	-4	(-24%)	17
%>0.15	(14%)	(19%)	(16%)			(16%)
[b] as a % of [a]	(65%)	(65%)	(63%)			(64%)
BAC Unknown	7	2	1	5	(250%)	5
Victorian Total Drivers and Riders						
<0.05	131	126	153	5	(4%)	140
[a] at 0.05 & above	41	43	57	-2	(-5%)	47
% at 0.05 & above	(24%)	(25%)	(27%)			(25%)
[b] >0.15	21	27	32	-6	(-22%)	26
%>0.15	(12%)	(16%)	(15%)			(14%)
[b] as a % of [a]	(51%)	(63%)	(56%)			(54%)
BAC Unknown	12	5	2	7	(140%)	7
Victorian Total Pedestrians						
<0.05	32	35	38	-3	(-9%)	33
[a] at 0.05 & above	8	21	9	-13	(-62%)	14
% at 0.05 & above	(20%)	(38%)	(19%)			(30%)
[b] >0.15	3	10	8	-7	(-70%)	9
%>0.15	(8%)	(18%)	(17%)			(19%)
[b] as a % of [a]	(38%)	(48%)	(89%)			(62%)
BAC Unknown	6	4	2	2	(50%)	4

The National Picture

State	Killed (12 months to February)					2011 v 2010	
	2011	2010	2009	2008			
NSW	401	470	377	428	-69	(-15%)	
VIC	276	292	304	334	-16	(-5%)	
QLD	247	313	329	355	-66	(-21%)	
SA	109	128	106	118	-19	(-15%)	
WA	205	174	214	215	31	(18%)	
TAS	30	55	47	44	-25	(-45%)	
NT	46	35	70	56	11	(31%)	
ACT	17	15	12	15	2	(13%)	
AUST TOTAL	1,331	1,482	1,459	1,565	-151	(-10%)	
AUST minus VIC	1,055	1,190	1,155	1,231	-135	(-11%)	

State	Deaths per 10,000 registered vehicles (12 months to February)			Deaths per 100,000 population (12 months to February)		
	2011	2010	2009	2011	2010	2009
NSW	0.85	1.02	0.83	5.52	6.60	5.39
VIC	0.66	0.72	0.77	4.96	5.36	5.72
QLD	0.73	0.94	1.02	5.45	7.07	7.65
SA	0.87	1.05	0.89	6.61	7.87	6.60
WA	1.09	0.94	1.20	8.89	7.74	9.84
TAS	0.72	1.36	1.19	5.90	10.92	9.42
NT	3.35	2.67	5.58	19.96	15.51	31.71
ACT	0.66	0.60	0.49	4.72	4.26	3.47
AUST TOTAL	0.82	0.94	0.94	5.94	6.75	6.80
AUST minus VIC	0.87	1.01	1.00	6.26	7.21	7.16

Victoria v Australia – 12 Month Moving Fatality Rate



Booze-Bus Random Breath Testing

12 months to January 2011 (monthly totals)

	2010											2011
	Feb	Mar	Apr	May	Jun	Jul	Aug	Sep	Oct	Nov	Dec	Jan
Melbourne	88,214	88,492	100,588	89,275	85,838	86,195	79,603	91,365	78,241	81,341	97,729	78,392
Country	17,657	13,776	20,869	13,669	13,900	13,420	9,459	14,650	15,957	19,375	19,112	20,355
Vic Total	105,871	102,268	121,457	102,944	99,738	99,615	89,062	106,015	94,198	100,716	116,841	98,747

12 months to January 2011 vs previous 12 months

	2011	2010	2009	2011 v 2010	2011 v 2009
Melbourne	1,045,273	1,002,354	1,192,200	42,919 (4%)	-146,927 (-12%)
Country	192,199	214,927	244,510	-22,728 (-11%)	-52,311 (-21%)
Vic Total	1,237,472	1,217,281	1,436,710	20,191 (2%)	-199,238 (-14%)

Mobile Safety Camera Data

Speed Infringements Issued from Mobile Cameras (monthly totals)

Monthly Average = 49,326

2010											2011	
Mar	Apr	May	Jun	Jul	Aug	Sep	Oct	Nov	Dec	Jan	Feb	
54,283	53,468	48,585	50,841	52,675	47,719	49,546	49,408	47,500	44,921	51,861	41,104	

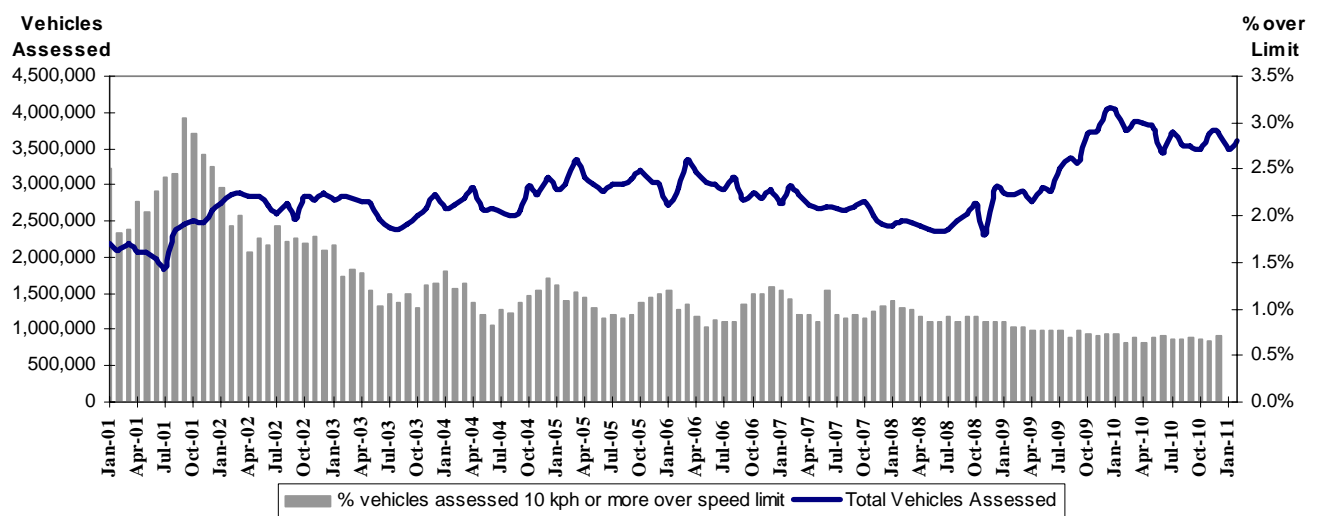
Excessive Speed Infringements Issued from Mobile Cameras (monthly totals)

Monthly Average = 367

2010											2011	
Mar	Apr	May	Jun	Jul	Aug	Sep	Oct	Nov	Dec	Jan	Feb	
360	395	372	372	422	311	354	377	330	363	352	398	

Note: An ESI is defined as 25km/h over the speed limit except in a 110km/h zone where it is 20km/h over the limit.

Mobile Safety Cameras – Vehicles assessed and percentage of vehicles assessed 10km/h or more over speed limit per month



Explanations and References

Hi-Alcetime is those times of the day and week (*shaded in the table below*) when casualty crashes are ten times more likely to involve alcohol than casualty crashes at other (Lo-Alcetime) times.

	12am - 6am	6am - 8am	8am - 10am	10am - 2pm	2pm - 4pm	4pm - 6pm	6pm - 12pm
Monday							
Tuesday							
Wednesday							
Thursday							
Friday							
Saturday							
Sunday							

Police Service Areas align with Local Government Areas. Most Police Service Areas are equivalent to a single Local Government Area, while the remainder comprise two or three Local Government Areas.

Police Service Area	Local Government Area(s)	Police Service Area	Local Government Area(s)
BALLARAT	BALLARAT	MARIBYRNONG	MARIBYRNONG
BANYULE	BANYULE	MAROONDAH	MAROONDAH
BASS COAST	BASS COAST, SOUTH GIPPSLAND	MELBOURNE	MELBOURNE
BAW BAW	BAWBAW	MELTON	MELTON
BAYSIDE	BAYSIDE	MILDURA	MILDURA
BENALLA	BENALLA, MANSFIELD, STRATHBOGIE	MITCHELL	MITCHELL, MURRINDINDI
BENDIGO	GREATER BENDIGO, LODDON	MONASH	MONASH
BOROONDARA	BOROONDARA	MOONEE VALLEY	MOONEE VALLEY
BRIMBANK	BRIMBANK	MOORABOOL	GOLDEN PLAINS, HEPBURN, MOORABOOL
CAMPASPE	CAMPASPE	MORELAND	MORELAND
CARDINIA	CARDINIA	MORNINGTON PENINSULA	MORNINGTON PENINSULA
CASEY	CASEY	NILLUMBIK	NILLUMBIK
CENTRAL GOLDFIELDS	CENTRAL GOLDFIELDS, PYRENEES	NORTHERN GRAMPIANS	ARARAT, NORTHERN GRAMPIANS, YARRIAMBICK
CORANGAMITE	COLAC-OTWAY, CORANGAMITE	PORT PHILLIP	PORT PHILLIP
DANDENONG	GREATER DANDENONG	SHEPPARTON	GREATER SHEPPARTON
DAREBIN	DAREBIN	SOUTHERN GRAMPIANS	GLENELG, SOUTHERN GRAMPIANS
EAST GIPPSLAND	EAST GIPPSLAND	STONNINGTON	STONNINGTON
FRANKSTON	FRANKSTON	SURFCOAST	SURFCOAST
GEELONG	GREATER GEELONG, QUEENSCLIFF	SWANHILL	BULOKE
GLENEIRA	GLENEIRA	WANGARATTA	ALPINE, WANGARATTA
HOBSONS BAY	HOBSONSBAY	WARRNAMBOOL	MOYNE, WARRNAMBOOL
HORSHAM	HINDMARSH, HORSHAM, WESTWIMMERA	WELLINGTON	WELLINGTON
HUME	HUME	WHITEHORSE	WHITEHORSE
KINGSTON	KINGSTON	WHITTLESEA	WHITTLESEA
KNOX	KNOX	WODONGA	INDIGO, TOWONG, WODONGA
LATROBE	LATROBE	WYNDHAM	WYNDHAM
MACEDON RANGES	MOUNT ALEXANDER, MACEDON RANGES	YARRA	YARRA
MANNINGHAM	MANNINGHAM	YARRA RANGES	YARRA RANGES

Useful Internet Sites

TAC Sites

- TAC Safety (Road Safety) www.tacsafety.com.au
- TAC How safe is your car www.howsafeisyourcar.com.au
- TAC Learners Log www.learnerslog.com.au
- TAC Motorcycle Safety Website www.spokes.com.au
- TAC Corporate site www.tac.vic.gov.au

Victorian Sites:

- arrive alive www.vicroads.vic.gov.au
- VicRoads www.vicroads.vic.gov.au
- Victorian Police www.police.vic.gov.au
- Parliamentary Road Safety Committee www.parliament.vic.gov.au/rsc/
- ARRB Transport Research www.arrb.com.au
- RACV www.racv.com.au
- Monash University Accident Research Centre www.monash.edu.au/muarc
- Roadsafe www.roadsafe.org.au

National and Interstate Sites:

- Australian Transport Safety Bureau www.atsb.gov.au
- Roads and Traffic Authority (NSW) www.rta.nsw.gov.au
- Queensland Transport - Road Safety transport.qld.gov.au/Home/Safety/Road
- Department of Transport (SA) www.transport.sa.gov.au/index.htm
- Main Roads Western Australia - Road Safety www.mrwa.wa.gov.au

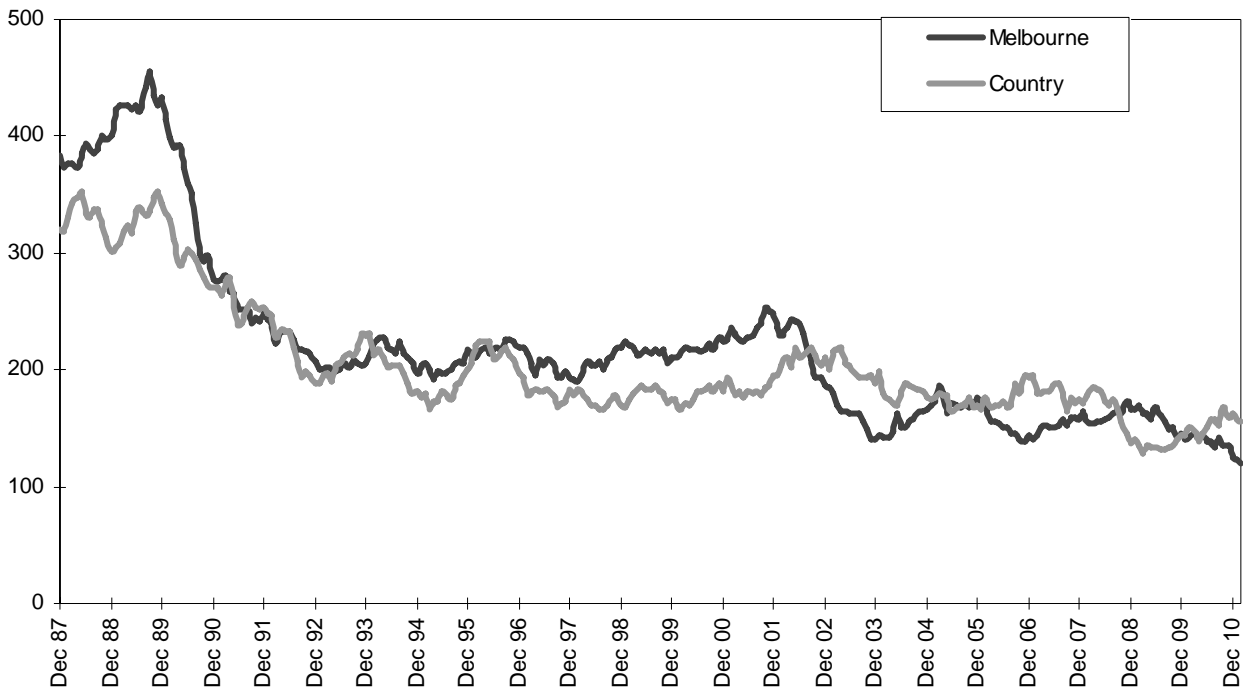
International Sites:

- National Highway Traffic Safety Admin (USA) www.nhtsa.dot.gov
- Swedish Road and Transport Institute (VTI) www.vti.se
- SWOV Institute for Road Safety Research www.swov.nl

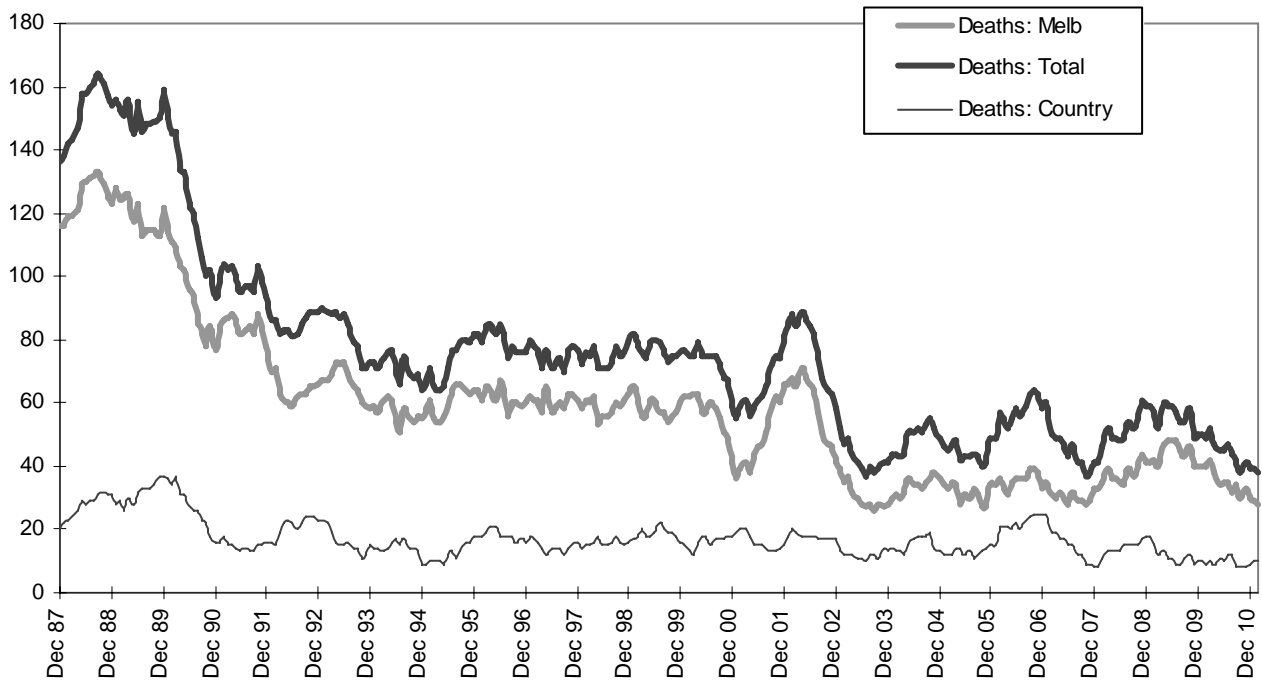
Related Sites:

- Australian Drug Foundation www.adf.org.au
- Bicycle Victoria www.bv.com.au

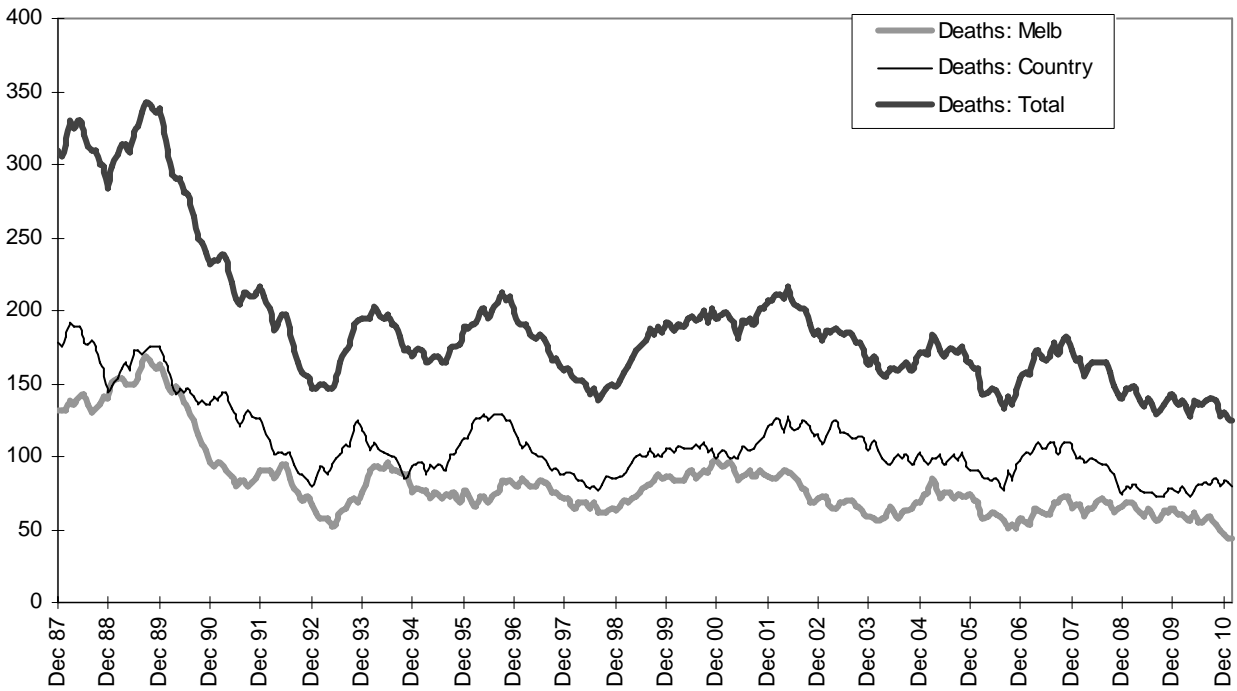
Graph 1 – Melbourne/country fatalities



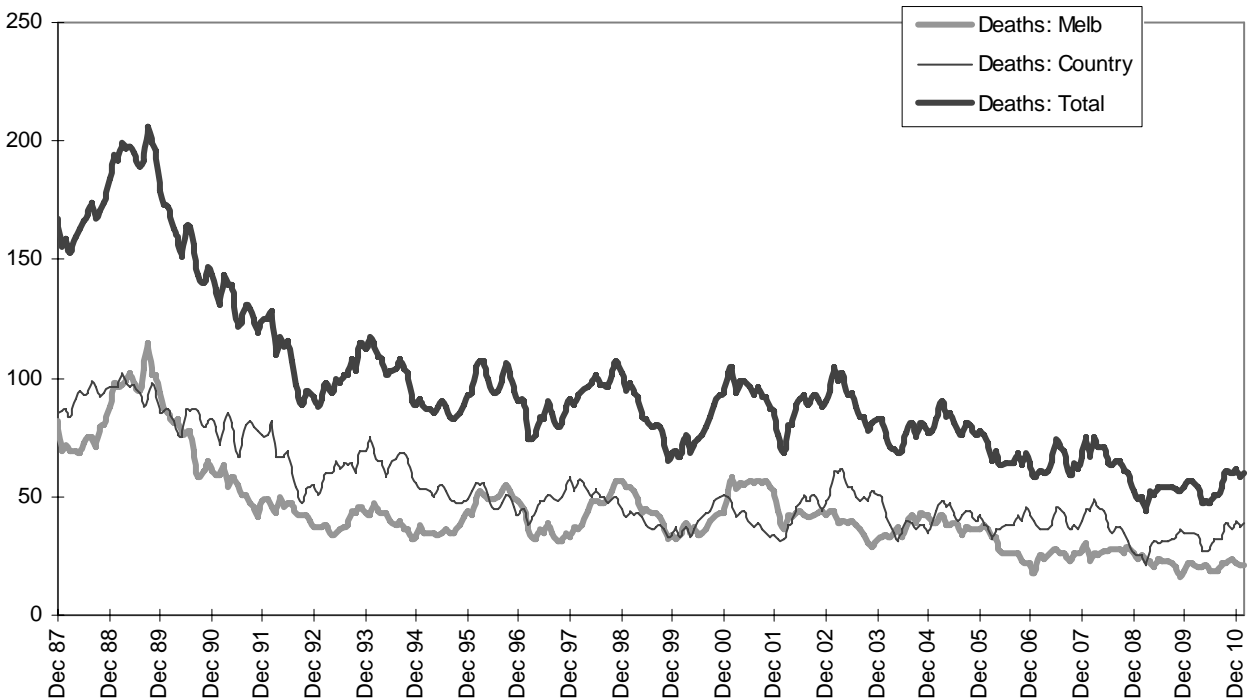
Graph 2a – Pedestrian fatalities (Melbourne/country)



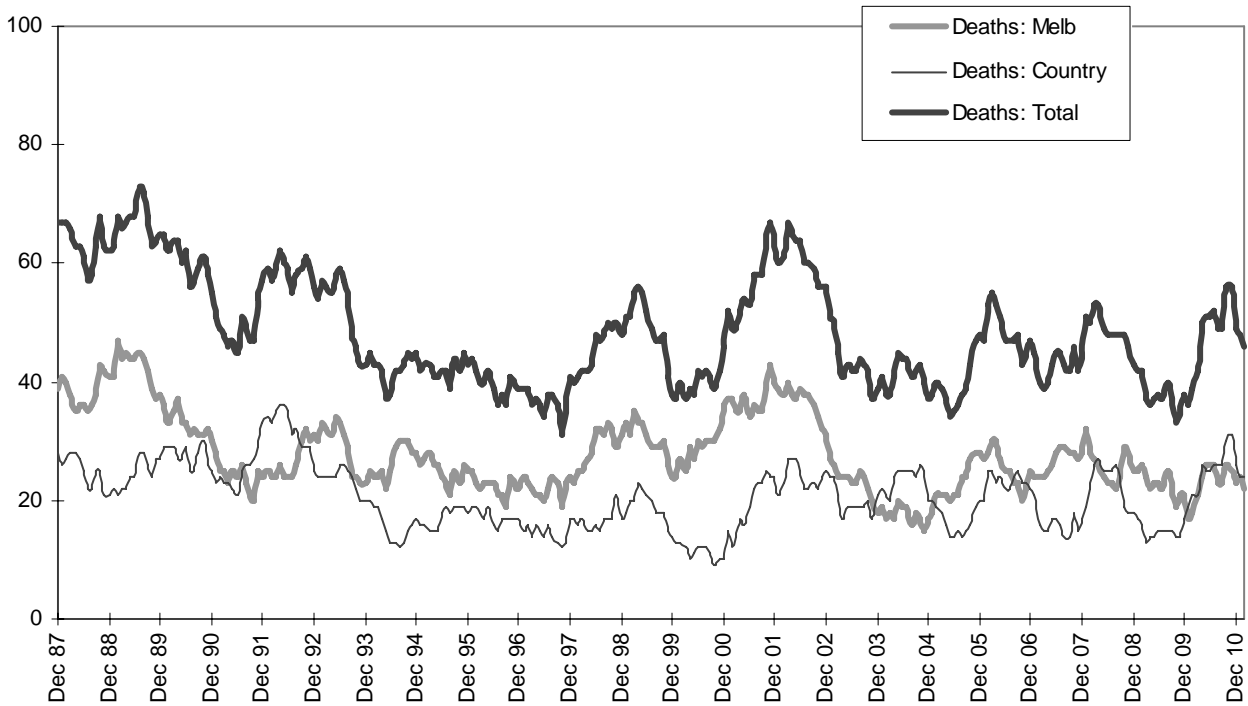
Graph 2b – Driver fatalities (Melbourne/country)



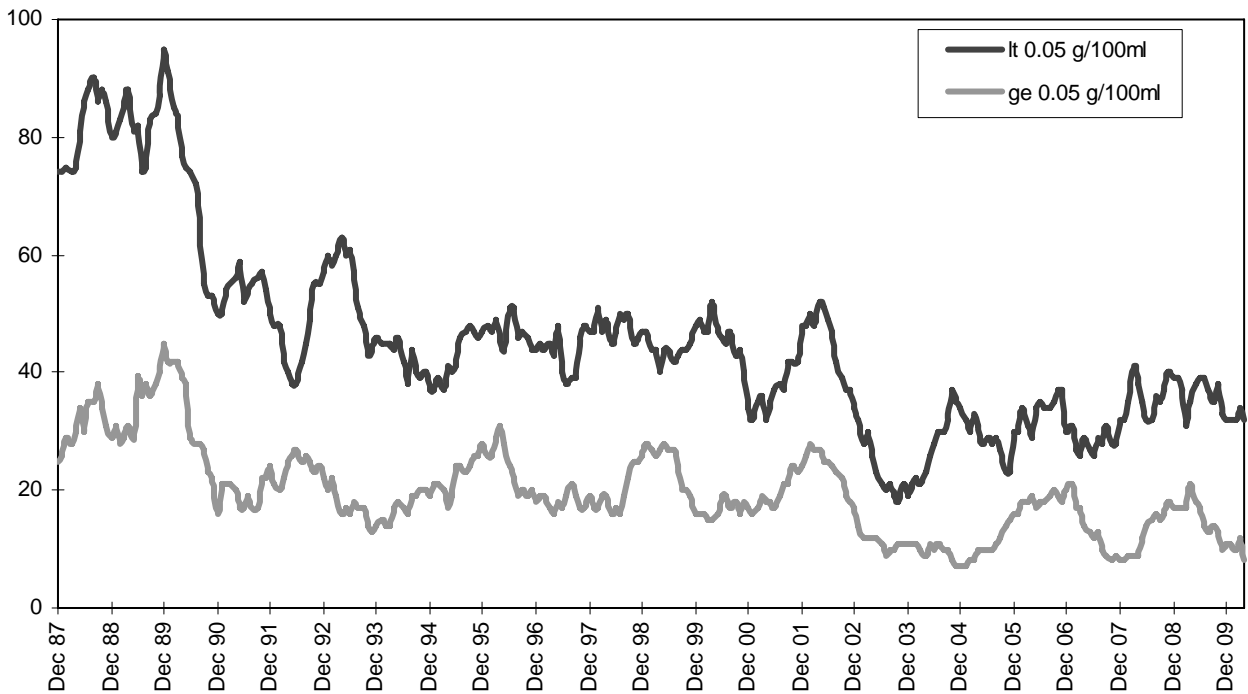
Graph 2c – Passenger fatalities (Melbourne/country)



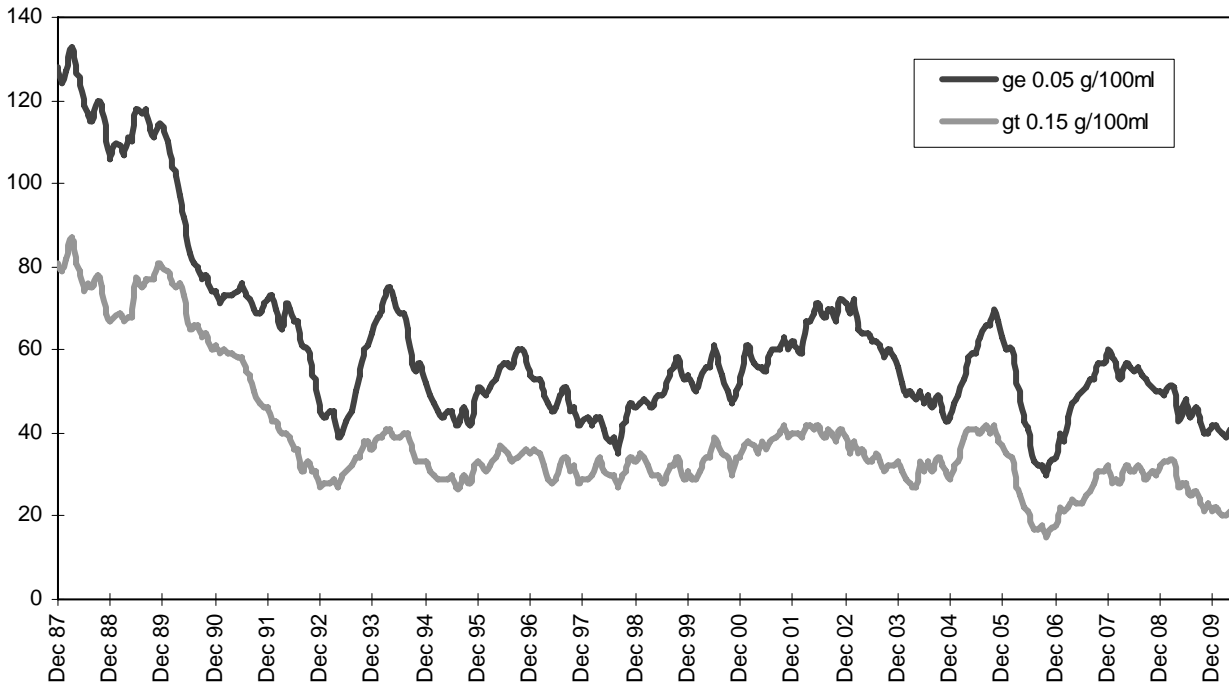
Graph 2d –Motorcyclist fatalities (Melbourne/country)



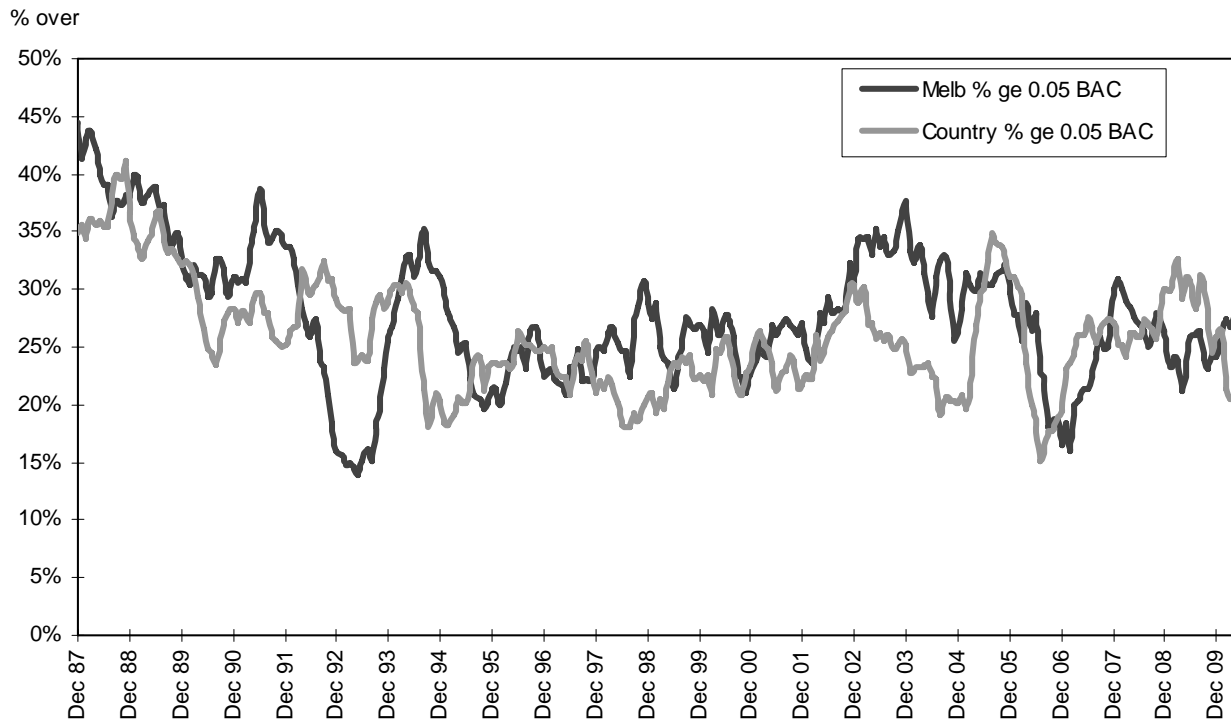
Graph 3a – Pedestrian deaths by BAC



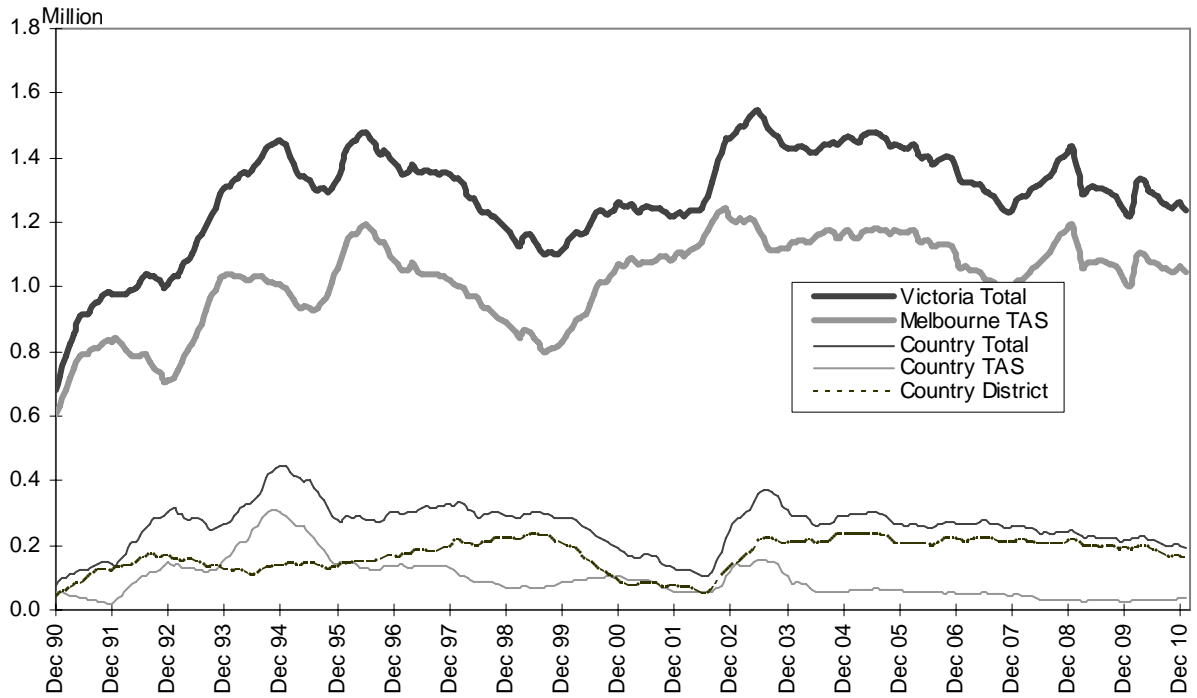
Graph 3b – Driver/rider deaths by BAC



Graph 3c – Proportion of driver/rider deaths with a BAC ge 0.05



Graph 4a – Booze-Bus RBTs



Graph 4b – RBT: Percentage positive readings

