

ROAD SAFETY STATISTICAL SUMMARY

January 2014



TRANSPORT
ACCIDENT
COMMISSION

60 Brougham Street
Geelong Vic 3220
PO Box 742
Geelong Vic 3220
Ausdoc DX 216079 Geelong

Telephone 1300 654 329
STD Toll Free 1800 332 556
Fax: 03 9656 9300
www.tac.vic.gov.au
ABN 22 033 947 623

Contents

Status Report.....	4
Fatalities.....	4
Claims involving acute hospitalisation over 14 days and an acute hospital admission*.....	5
Fatalities: 12 months to January 2014.....	6
Claims involving acute hospitalisation over 14 days: 12 months to July 2014 (claim acceptance date)	8
Claims involving an acute hospital admission: 12 months to July 2013 (claim acceptance date)	10
Fatalities: Victorian monthly totals since 1951	12
Fatalities by Week (2009 to 2014).....	13
Alcohol Related Fatalities.....	14
The National Picture	15
Booze-Bus Random Breath Testing	16
Mobile Safety Camera Data.....	16
Explanations and References	17
Useful Internet Sites.....	18
Figures	19

Note about the data in this report

- All data provided in this report is the data most recently available at time of production. Fatalities, breath-test data and safety camera data are updated to the end of report month. A 6-month lag applies to TAC claims data, and a 2-month lag applies to alcohol related fatalities data.
- Reported data will have one extra day of exposure for leap years.
- Data is subject to revision as additional information about known accidents/claims is received, and as new accident/claim reports are received and processed.

*An acute hospital admission refers to a hospital admission that occurred within 7 days of accident.

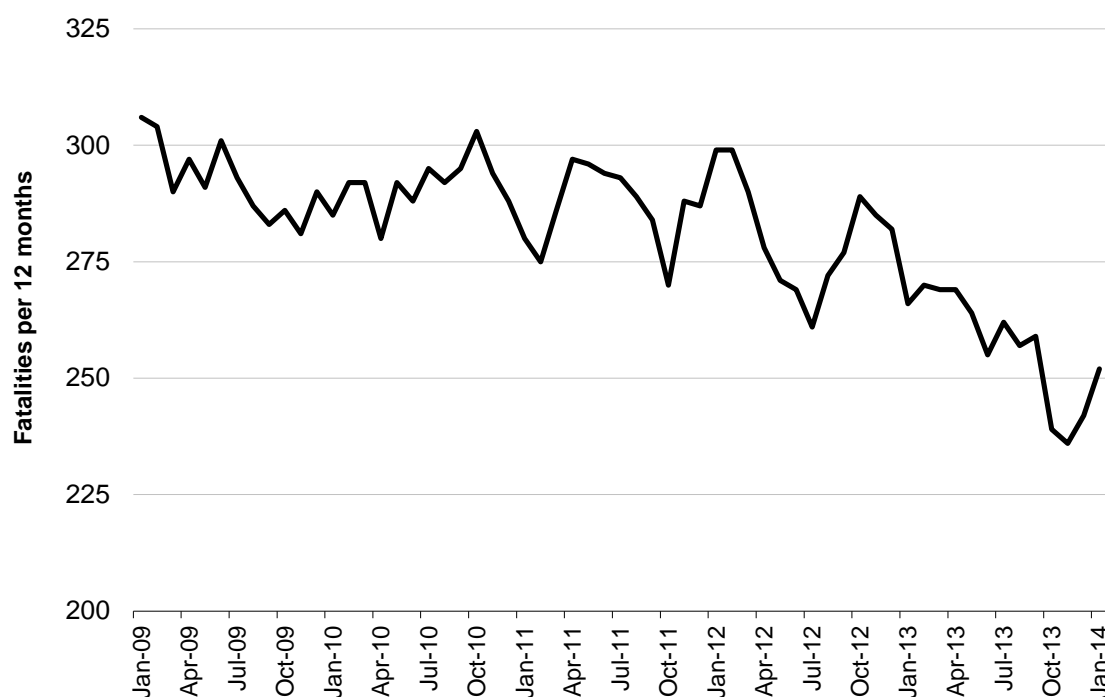
Status Report

Fatalities

- The rolling 12 month number of road fatalities in January 2014 stands at 252, 5% less than in 2013 (266).
- 24 people were fatally injured in January 2014 on Victorian roads. This compares to 14 in January 2013.

Fatalities (rolling 12 month, to end January 2014)

Category	2014	2013	2012	2014 v 2013	2014 v 2012	5 Year Av
Fatal Injuries (Rolling 12 Month Total)						
Fatal (to January)	252	266	299	-14	(-5%)	276
per 10,000 veh	0.57	0.61	0.70	-0.04	(-7%)	0.67
per 100,000 pop	4.38	4.72	5.40	-0.34	(-7%)	5.10
Accidents (Rolling 12 Month Total)						
Fatal (to January)	230	247	270	-17	(-7%)	253
per 10,000 veh	0.52	0.57	0.64	-0.05	(-9%)	0.62
per 100,000 pop	4.00	4.38	4.87	-0.38	(-9%)	4.68

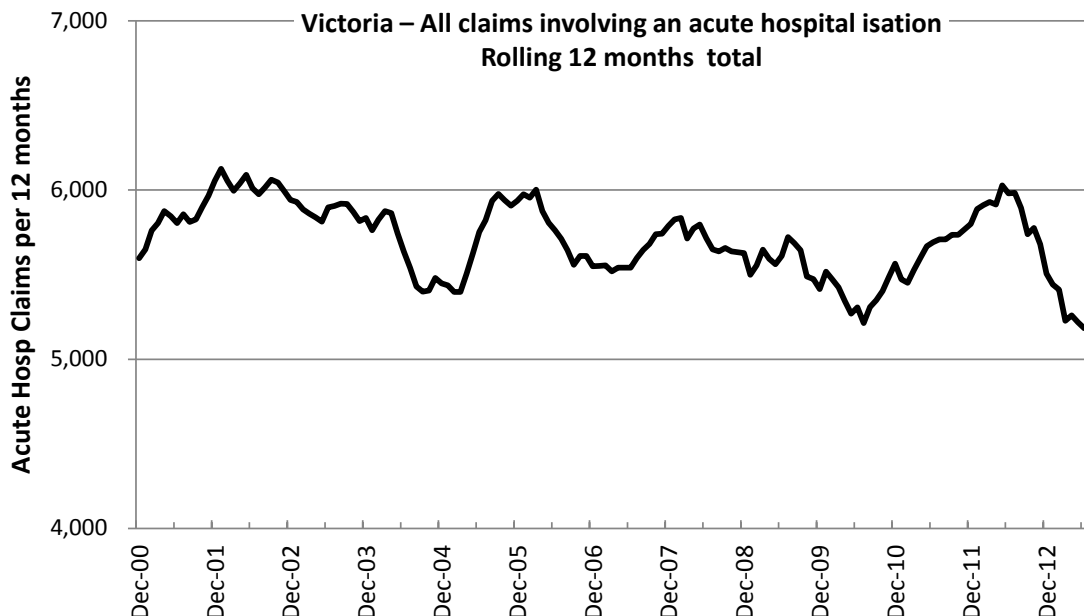
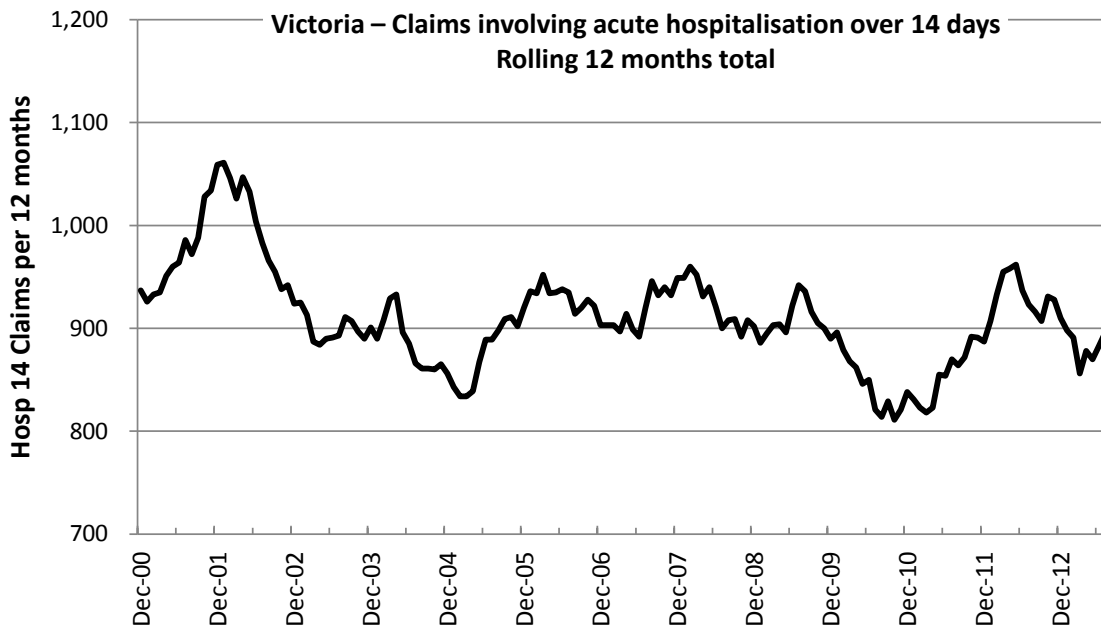


Victoria – Fatalities, rolling 12 months total

Claims involving acute hospitalisation over 14 days and an acute hospital admission*

(by claim acceptance date – rolling 12 month, to midnight 31 July 2013)

Category	2013	2012	2011	2013 vs. 2012		2013 vs. 2011		5 Year Av
Claims involving an acute hospitalisation over 14 days (Rolling 12 Month Total)								
Claims (to July)	896	923	870	-27	(-3%)	+26	(+3%)	890
per 100,000 pop	15.7	16.6	15.8	-0.9	(-5%)	-0.1	(-1%)	16.2
per 10,000 veh	2.0	2.2	2.1	-0.2	(-9%)	-0.1	(-5%)	2.1
All claims involving an acute hospitalisation (Rolling 12 Month Total)								
Claims (to July)	5,190	5,984	5,708	-794	(-13%)	-518	(-9%)	5,564
per 100,000 pop	91.2	107.4	103.7	-16.2	(-15%)	-12.5	(-12%)	102.0
per 10,000 veh	11.9	14.0	13.6	-2.1	(-15%)	-1.7	(-13%)	13.5



*An acute hospital admission refers to a hospital admission that occurred within 7 days of accident.

Fatalities: 12 months to January 2014

Category	2014	2013	2012	2014 v 2013		2014 v 2012		5 Year Av
Overview								
Fatalities	252	266	299	-14	(-5%)	-47	(-16%)	276
Accidents	230	247	270	-17	(-7%)	-40	(-15%)	253
Sex								
Female	84	80	82	+4	(+5%)	+2	(+2%)	80
Male	168	186	217	-18	(-10%)	-49	(-23%)	197
Roaduser								
Bicyclist	8	5	8	+3	(+60%)	0	(0%)	7
Driver	121	141	129	-20	(-14%)	-8	(-6%)	130
Motorcyclist	40	42	48	-2	(-5%)	-8	(-17%)	43
Passenger	45	45	66	0	(0%)	-21	(-32%)	54
Pedestrian	38	33	48	+5	(+15%)	-10	(-21%)	42
Location								
Melbourne	104	121	133	-17	(-14%)	-29	(-22%)	124
Rural Victoria	148	145	166	+3	(+2%)	-18	(-11%)	152
Agegroup								
0-4	0	3	6	-3	(-100%)	-6	(-100%)	4
5-15	7	7	8	0	(0%)	-1	(-13%)	8
16-17	3	3	12	0	(0%)	-9	(-75%)	6
18-20	15	26	36	-11	(-42%)	-21	(-58%)	28
21-25	24	34	34	-10	(-29%)	-10	(-29%)	31
26-29	18	17	16	+1	(+6%)	+2	(+13%)	20
30-39	33	39	40	-6	(-15%)	-7	(-18%)	37
40-49	31	28	38	+3	(+11%)	-7	(-18%)	34
50-59	33	35	29	-2	(-6%)	+4	(+14%)	33
60-69	29	27	34	+2	(+7%)	-5	(-15%)	28
70+	57	46	46	+11	(+24%)	+11	(+24%)	48
Alctime								
High (Melb)	61	59	70	+2	(+3%)	-9	(-13%)	68
High (Rural)	53	69	83	-16	(-23%)	-30	(-36%)	71
High (Vic)	114	128	153	-14	(-11%)	-39	(-25%)	139
Low (Melb)	43	62	63	-19	(-31%)	-20	(-32%)	57
Low (Rural)	95	76	83	+19	(+25%)	+12	(+14%)	81
Low (Vic)	138	138	146	0	(0%)	-8	(-5%)	138
Accident Type								
Intersection								
Adjacent direction	34	26	32	0	(+31%)	+2	(+6%)	28
Opposing direction	4	4	5	0	(0%)	-1	(-20%)	5
Mid-block/other								
Head on	43	42	40	+1	(+2%)	+3	(+8%)	39
Same direction	17	13	13	+4	(+31%)	+4	(+31%)	16
Manoeuvre/o'taking	7	20	13	-13	(-65%)	-6	(-46%)	15
On path	1	6	5	-5	(-83%)	-4	(-80%)	5
Single vehicle	101	115	132	-14	(-12%)	-31	(-23%)	118
Other (incl peds)	45	40	59	+5	(+13%)	-14	(-24%)	50

Fatalities: 12 months to January 2014 - Continued

Category	2013	2012	2011	2013 v 2012		2013 v 2011		5 Year Av
Police Service Area (based on Local Government Area (see p.13))								
BALLARAT	7	2	7	+5	(+250%)	0	(0%)	6
BANYULE	3	1	3	+2	(+200%)	0	(0%)	3
BASS COAST	7	5	9	+2	(+40%)	-2	(-22%)	7
BAW BAW	6	6	6	0	(0%)	0	(0%)	7
BENALLA	11	9	8	+2	(+22%)	+3	(+38%)	9
BENDIGO	5	11	5	-6	(-55%)	0	(0%)	7
BOROONDARA	5	2	3	+3	(+150%)	+2	(+67%)	3
BRIMBANK	5	8	11	-3	(-38%)	-6	(-55%)	6
CAMPASPE	3	9	3	-6	(-67%)	0	(0%)	4
CARDINIA	1	5	11	-4	(-80%)	-10	(-91%)	5
CASEY	7	6	4	+1	(+17%)	+3	(+75%)	8
CENTRAL GOLDFIELDS	4	2	2	+2	(+100%)	+2	(+100%)	4
DAREBIN	2	5	2	-3	(-60%)	0	(0%)	3
EAST GIPPSLAND	2	7	9	-5	(-71%)	-7	(-78%)	7
FRANKSTON	1	3	4	-2	(-67%)	-3	(-75%)	3
GEELONG	5	15	12	-10	(-67%)	-7	(-58%)	11
GLEN EIRA	6	5	5	+1	(+20%)	+1	(+20%)	5
GREATER DANDENONG	4	5	5	-1	(-20%)	-1	(-20%)	5
HOBSONS BAY	3	0	1	+3		+2	(+200%)	1
HORSHAM	4	3	7	+1	(+33%)	-3	(-43%)	4
HUME	5	11	5	-6	(-55%)	0	(0%)	7
KINGSTON	6	8	4	-2	(-25%)	+2	(+50%)	5
KNOX	3	1	2	+2	(+200%)	+1	(+50%)	3
LA TROBE	6	7	5	-1	(-14%)	+1	(+20%)	6
MACEDON RANGES	5	6	4	-1	(-17%)	+1	(+25%)	6
MANNINGHAM	0	4	1	-4	(-100%)	-1	(-100%)	3
MARIBYRNONG	4	3	1	+1	(+33%)	+3	(+300%)	2
MAROONDAH	0	4	5	-4	(-100%)	-5	(-100%)	2
MELBOURNE	2	3	7	-1	(-33%)	-5	(-71%)	3
MELTON	8	5	6	+3	(+60%)	+2	(+33%)	6
MILDURA	7	1	3	+6	(+600%)	+4	(+133%)	4
MITCHELL	9	10	6	-1	(-10%)	+3	(+50%)	8
MONASH	7	5	4	+2	(+40%)	+3	(+75%)	6
MOONEE VALLEY	3	1	1	+2	(+200%)	+2	(+200%)	2
MOORABOOL	9	9	12	0	(0%)	-3	(-25%)	8
MORELAND	2	3	3	-1	(-33%)	-1	(-33%)	3
MORNINGTON PENINSULA	3	6	8	-3	(-50%)	-5	(-63%)	7
NILLUMBIK	0	2	3	-2	(-100%)	-3	(-100%)	2
NORTHERN GRAMPPIANS	7	6	3	+1	(+17%)	+4	(+133%)	5
PORT PHILLIP	4	1	1	+3	(+300%)	+3	(+300%)	2
SHEPPARTON	5	11	5	-6	(-55%)	0	(0%)	6
SOUTHERN GRAMPPIANS	0	5	6	-5	(-100%)	-6	(-100%)	5
STONNINGTON	1	1	2	0	(0%)	-1	(-50%)	1
SURF COAST	3	3	12	0	(0%)	-9	(-75%)	7
SWAN HILL	9	6	6	+3	(+50%)	+3	(+50%)	6
WANGARATTA	9	6	18	+3	(+50%)	-9	(-50%)	11
WARRNAMBOOL	13	1	7	+12	(+1200%)	+6	(+86%)	7
WELLINGTON	6	2	8	+4	(+200%)	-2	(-25%)	5
WHITEHORSE	2	2	5	0	(0%)	-3	(-60%)	4
WHITTLESEA	3	6	5	-3	(-50%)	-2	(-40%)	7
WODONGA	6	2	3	+4	(+200%)	+3	(+100%)	4
WYNDHAM	3	10	9	-7	(-70%)	-6	(-67%)	6
YARRA	1	1	2	0	(0%)	-1	(-50%)	2
YARRA RANGES	10	5	10	+5	(+100%)	0	(0%)	8

Claims involving acute hospitalisation over 14 days: 12 months to July 2014 (claim acceptance date)

Category	2013	2012	2011	2013 v 2012		2013 v 2011		5 Year Av
Overview								
Claims	896	923	870	-27	(-3%)	+26	(+3%)	890
Sex								
Female	372	404	329	-32	(-8%)	+43	(+13%)	357
Male	523	519	540	+4	(+1%)	-17	(-3%)	533
Roaduser								
Driver	377	355	336	+22	(+6%)	+41	(+12%)	347
Passenger	141	149	144	-8	(-5%)	-3	(-2%)	148
Motorcyclist	140	165	163	-25	(-15%)	-23	(-14%)	164
Pedestrian	187	190	176	-3	(-2%)	+11	(+6%)	177
Cyclist	30	40	37	-10	(-25%)	-7	(-19%)	37
Train/Tram	5	9	6	-4	(-44%)	-1	(-17%)	6
Location								
Melbourne	576	618	551	-42	(-7%)	+25	(+5%)	562
Rural Victoria	314	301	302	+13	(+4%)	+12	(+4%)	303
Agegroup								
0-4	2	1	7	+1	(+100%)	-5	(-71%)	4
5-15	7	14	15	-7	(-50%)	-8	(-53%)	15
16-17	15	26	19	-11	(-42%)	-4	(-21%)	21
18-20	64	52	56	+12	(+23%)	+8	(+14%)	63
21-25	80	81	86	-1	(-1%)	-6	(-7%)	84
26-29	38	63	58	-25	(-40%)	-20	(-34%)	53
30-39	112	114	110	-2	(-2%)	+2	(+2%)	118
40-49	115	118	115	-3	(-3%)	0	(0%)	115
50-59	96	105	98	-9	(-9%)	-2	(-2%)	99
60-69	114	117	96	-3	(-3%)	+18	(+19%)	100
70+	253	232	210	+21	(+9%)	+43	(+20%)	219
Alctime								
High (Melb)	257	278	249	-21	(-8%)	+8	(+3%)	250
High (Rural)	115	121	129	-6	(-5%)	-14	(-11%)	124
High (Vic)	372	399	378	-27	(-7%)	-6	(-2%)	374
Low (Melb)	319	340	302	-21	(-6%)	+17	(+6%)	311
Low (Rural)	199	180	173	+19	(+11%)	+26	(+15%)	179
Low (Vic)	518	520	475	-2	(-0%)	+43	(+9%)	491
Accident Type								
Intersection								
Adjacent direction	136	116	120	+20	(+17%)	+16	(+13%)	123
Opposing direction	52	67	66	-15	(-22%)	-14	(-21%)	59
Mid-block/other								
Head on	79	73	88	+6	(+8%)	-9	(-10%)	78
Same direction	77	90	95	-13	(-14%)	-18	(-19%)	83
Manoeuvre/o'taking	63	57	48	+6	(+11%)	+15	(+31%)	54
On path	21	23	17	-2	(-9%)	+4	(+24%)	24
Single vehicle	231	262	236	-31	(-12%)	-5	(-2%)	254
Other (incl peds)	237	235	200	+2	(+1%)	+37	(+19%)	215

Note: excludes rejected claims and claims for interstate crashes

Claims involving acute hospitalisation over 14 days: 12 months to July 2013 (claim acceptance date) -
Continued

Category	2013	2012	2011	2013 v 2012		2013 v 2011		5 Year Av
Police Service Area (based on Local Government Area (see p.13))								
BALLARAT	16	7	21	+9	(+129%)	-5	(-24%)	13
BANYULE	11	11	10	0	(0%)	+1	(+10%)	11
BASS COAST	12	13	17	-1	(-8%)	-5	(-29%)	16
BAW BAW	8	16	9	-8	(-50%)	-1	(-11%)	9
BENALLA	12	14	19	-2	(-14%)	-7	(-37%)	16
BENDIGO	15	18	19	-3	(-17%)	-4	(-21%)	17
BOROONDARA	18	30	23	-12	(-40%)	-5	(-22%)	22
BRIMBANK	21	33	18	-12	(-36%)	+3	(+17%)	21
CAMPASPE	7	4	5	+3	(+75%)	+2	(+40%)	5
CARDINIA	13	16	17	-3	(-19%)	-4	(-24%)	17
CASEY	26	21	27	+5	(+24%)	-1	(-4%)	26
CENTRAL GOLDFIELDS	2	2	2	0	(0%)	0	(0%)	2
DAREBIN	22	16	14	+6	(+38%)	+8	(+57%)	18
EAST GIPPSLAND	8	16	14	-8	(-50%)	-6	(-43%)	13
FRANKSTON	13	15	17	-2	(-13%)	-4	(-24%)	17
GEELONG	38	31	24	+7	(+23%)	+14	(+58%)	29
GLEN EIRA	30	24	39	+6	(+25%)	-9	(-23%)	31
GREATER DANDENONG	26	36	20	-10	(-28%)	+6	(+30%)	27
HOBSONS BAY	12	11	10	+1	(+9%)	+2	(+20%)	10
HORSHAM	5	13	7	-8	(-62%)	-2	(-29%)	8
HUME	32	28	23	+4	(+14%)	+9	(+39%)	26
KINGSTON	22	18	18	+4	(+22%)	+4	(+22%)	20
KNOX	15	19	16	-4	(-21%)	-1	(-6%)	15
LA TROBE	15	12	22	+3	(+25%)	-7	(-32%)	14
MACEDON RANGES	20	12	14	+8	(+67%)	+6	(+43%)	17
MANNINGHAM	13	20	12	-7	(-35%)	+1	(+8%)	13
MARIBYRNONG	15	13	17	+2	(+15%)	-2	(-12%)	14
MAROONDAH	7	13	11	-6	(-46%)	-4	(-36%)	10
MELBOURNE	31	29	33	+2	(+7%)	-2	(-6%)	28
MELTON	17	14	11	+3	(+21%)	+6	(+55%)	12
MILDURA	7	12	5	-5	(-42%)	+2	(+40%)	7
MITCHELL	20	20	13	0	(0%)	+7	(+54%)	18
MONASH	19	23	21	-4	(-17%)	-2	(-10%)	22
MOONEE VALLEY	18	19	15	-1	(-5%)	+3	(+20%)	15
MOORABOOL	16	10	13	+6	(+60%)	+3	(+23%)	15
MORELAND	33	23	20	+10	(+43%)	+13	(+65%)	23
MORNINGTON PENINSULA	31	36	32	-5	(-14%)	-1	(-3%)	29
NILLUMBIK	9	6	5	+3	(+50%)	+4	(+80%)	6
NORTHERN GRAMPPIANS	11	5	4	+6	(+120%)	+7	(+175%)	6
PORT PHILLIP	9	16	8	-7	(-44%)	+1	(+13%)	12
SHEPPARTON	17	10	7	+7	(+70%)	+10	(+143%)	14
SOUTHERN GRAMPPIANS	8	7	10	+1	(+14%)	-2	(-20%)	8
STONNINGTON	10	18	21	-8	(-44%)	-11	(-52%)	15
SURF COAST	11	9	17	+2	(+22%)	-6	(-35%)	12
SWAN HILL	6	4	4	+2	(+50%)	+2	(+50%)	5
WANGARATTA	17	15	18	+2	(+13%)	-1	(-6%)	17
WARRNAMBOOL	14	17	12	-3	(-18%)	+2	(+17%)	13
WELLINGTON	9	9	11	0	(0%)	-2	(-18%)	10
WHITEHORSE	12	19	25	-7	(-37%)	-13	(-52%)	20
WHITTLESEA	24	30	9	-6	(-20%)	+15	(+167%)	21
WODONGA	9	15	5	-6	(-40%)	+4	(+80%)	10
WYNDHAM	20	25	13	-5	(-20%)	+7	(+54%)	18
YARRA	15	9	13	+6	(+67%)	+2	(+15%)	12
YARRA RANGES	32	27	33	+5	(+19%)	-1	(-3%)	30

Note: excludes rejected claims and claims for interstate crashes

Claims involving an acute hospital admission: 12 months to July 2013 (claim acceptance date)

Category	2013	2012	2011	2013 v 2012	2013 v 2011	5 Year Av
Overview						
Claims	5,190	5,984	5,708	-794	(-13%)	5,564
Sex						
Female	2,145	2,594	2,429	-449	(-17%)	2,338
Male	3,043	3,390	3,277	-347	(-10%)	3,224
Roaduser						
Driver	2,396	2,836	2,605	-440	(-16%)	2,529
Passenger	883	1,016	1,110	-133	(-13%)	1,016
Motorcyclist	825	944	937	-119	(-13%)	931
Pedestrian	620	668	653	-48	(-7%)	626
Cyclist	349	376	328	-27	(-7%)	339
Train/Tram	27	27	22	0	(0%)	23
Location						
Melbourne	3,493	4,022	3,849	-529	(-13%)	3,658
Rural Victoria	1,633	1,889	1,805	-256	(-14%)	1,742
Agegroup						
0-4	44	46	57	-2	(-4%)	48
5-15	173	190	203	-17	(-9%)	195
16-17	91	129	133	-38	(-29%)	130
18-20	469	542	580	-73	(-13%)	548
21-25	630	768	702	-138	(-18%)	693
26-29	371	461	421	-90	(-20%)	420
30-39	783	928	886	-145	(-16%)	890
40-49	781	884	859	-103	(-12%)	828
50-59	628	765	703	-137	(-18%)	671
60-69	472	535	513	-63	(-12%)	469
70+	748	736	651	+12	(+2%)	672
Alctime						
High (Melb)	1,523	1,837	1,811	-314	(-17%)	1,663
High (Rural)	667	793	808	-126	(-16%)	756
High (Vic)	2,190	2,630	2,619	-440	(-17%)	2,418
Low (Melb)	1,970	2,185	2,038	-215	(-10%)	1,996
Low (Rural)	966	1,096	997	-130	(-12%)	986
Low (Vic)	2,936	3,281	3,035	-345	(-11%)	2,982
Accident Type						
Intersection						
Adjacent direction	763	901	880	-138	(-15%)	845
Opposing direction	455	514	457	-59	(-11%)	457
Mid-block/other						
Head on	279	319	364	-40	(-13%)	319
Same direction	760	950	971	-190	(-20%)	847
Manoeuvre/o'taking	318	307	334	+11	(+4%)	321
On path	208	239	191	-31	(-13%)	216
Single vehicle	1,390	1,635	1,605	-245	(-15%)	1,581
Other (incl peds)	1,017	1,119	906	-102	(-9%)	975

Note: excludes rejected claims and claims for interstate crashes

Claims involving an acute hospital admission: 12 months to July 2013 (claim acceptance date) – Continued

Category	2013	2012	2011	2013 v 2012		2013 v 2011		5 Year Av
Police Service Area (based on Local Government Area (see p.13))								
BALLARAT	97	91	107	+6	(+7%)	-10	(-9%)	93
BANYULE	53	76	54	-23	(-30%)	-1	(-2%)	60
BASS COAST	68	89	72	-21	(-24%)	-4	(-6%)	74
BAW BAW	55	71	52	-16	(-23%)	+3	(+6%)	53
BENALLA	89	95	101	-6	(-6%)	-12	(-12%)	98
BENDIGO	89	128	93	-39	(-30%)	-4	(-4%)	93
BOROONDARA	130	140	139	-10	(-7%)	-9	(-6%)	133
BRIMBANK	143	184	138	-41	(-22%)	+5	(+4%)	142
CAMPASPE	34	41	35	-7	(-17%)	-1	(-3%)	37
CARDINIA	81	82	112	-1	(-1%)	-31	(-28%)	88
CASEY	198	245	238	-47	(-19%)	-40	(-17%)	223
CENTRAL GOLDFIELDS	9	9	5	0	(0%)	+4	(+80%)	9
DAREBIN	90	100	113	-10	(-10%)	-23	(-20%)	101
EAST GIPPSLAND	67	79	65	-12	(-15%)	+2	(+3%)	62
FRANKSTON	107	147	145	-40	(-27%)	-38	(-26%)	135
GEELONG	194	251	226	-57	(-23%)	-32	(-14%)	223
GLEN EIRA	163	176	177	-13	(-7%)	-14	(-8%)	167
GREATER DANDENONG	198	210	210	-12	(-6%)	-12	(-6%)	185
HOBSONS BAY	53	76	56	-23	(-30%)	-3	(-5%)	60
HORSHAM	26	39	44	-13	(-33%)	-18	(-41%)	31
HUME	141	147	148	-6	(-4%)	-7	(-5%)	147
KINGSTON	128	132	127	-4	(-3%)	+1	(+1%)	129
KNOX	85	111	134	-26	(-23%)	-49	(-37%)	111
LA TROBE	64	64	77	0	(0%)	-13	(-17%)	62
MACEDON RANGES	94	70	82	+24	(+34%)	+12	(+15%)	80
MANNINGHAM	68	75	56	-7	(-9%)	+12	(+21%)	68
MARIBYRNONG	72	97	86	-25	(-26%)	-14	(-16%)	77
MAROONDAH	50	77	72	-27	(-35%)	-22	(-31%)	68
MELBOURNE	239	245	231	-6	(-2%)	+8	(+3%)	218
MELTON	74	75	73	-1	(-1%)	+1	(+1%)	69
MILDURA	25	44	36	-19	(-43%)	-11	(-31%)	33
MITCHELL	86	95	65	-9	(-9%)	+21	(+32%)	81
MONASH	165	186	154	-21	(-11%)	+11	(+7%)	165
MOONEE VALLEY	111	113	90	-2	(-2%)	+21	(+23%)	100
MOORABOOL	106	101	82	+5	(+5%)	+24	(+29%)	101
MORELAND	127	160	141	-33	(-21%)	-14	(-10%)	134
MORNINGTON PENINSULA	117	182	183	-65	(-36%)	-66	(-36%)	156
NILLUMBIK	40	40	43	0	(0%)	-3	(-7%)	37
NORTHERN GRAMPPIANS	45	30	33	+15	(+50%)	+12	(+36%)	34
PORT PHILLIP	102	120	106	-18	(-15%)	-4	(-4%)	107
SHEPPARTON	61	72	60	-11	(-15%)	+1	(+2%)	68
SOUTHERN GRAMPPIANS	48	41	56	+7	(+17%)	-8	(-14%)	44
STONNINGTON	133	111	135	+22	(+20%)	-2	(-1%)	119
SURF COAST	52	58	87	-6	(-10%)	-35	(-40%)	72
SWAN HILL	25	27	19	-2	(-7%)	+6	(+32%)	28
WANGARATTA	87	103	104	-16	(-16%)	-17	(-16%)	100
WARRNAMBOOL	59	94	104	-35	(-37%)	-45	(-43%)	86
WELLINGTON	51	74	89	-23	(-31%)	-38	(-43%)	70
WHITEHORSE	96	120	137	-24	(-20%)	-41	(-30%)	115
WHITTLESEA	139	151	111	-12	(-8%)	+28	(+25%)	131
WODONGA	63	79	57	-16	(-20%)	+6	(+11%)	62
WYNDHAM	129	148	145	-19	(-13%)	-16	(-11%)	125
YARRA	95	110	104	-15	(-14%)	-9	(-9%)	103
YARRA RANGES	166	186	191	-20	(-11%)	-25	(-13%)	187

Note: excludes rejected claims and claims for interstate crashes

Fatalities: Victorian monthly totals since 1951

Year	Jan	Feb	Mar	Apr	May	Jun	Jul	Aug	Sep	Oct	Nov	Dec	Totals
1951							61	59	52	38	29	41	
1952	45	40	54	61	54	69	67	55	44	44	31	20	584
1953	23	28	54	58	49	42	50	37	44	27	36	32	480
1954	44	42	28	60	55	36	63	33	25	52	30	41	509
1955	44	36	45	55	48	56	64	44	44	32	40	40	548
1956	34	48	51	67	53	65	71	47	39	39	44	48	606
1957	50	41	46	58	52	54	57	53	51	46	32	49	589
1958	50	38	42	58	54	41	54	53	57	40	57	52	596
1959	50	57	61	50	75	55	42	48	52	55	63	63	671
1960	49	53	57	76	70	70	67	62	61	77	52	66	760
1961	63	57	68	74	58	68	78	82	59	62	60	65	794
1962	65	41	76	78	72	80	70	77	62	53	64	70	808
1963	67	56	65	85	66	68	77	55	55	58	61	67	780
1964	73	71	78	71	83	89	80	89	67	66	62	75	904
1965	63	64	86	88	80	87	79	69	81	77	68	87	929
1966	75	59	75	103	74	86	87	80	75	66	90	85	955
1967	61	79	91	97	81	71	59	67	70	68	60	83	887
1968	70	78	86	78	73	76	73	77	72	80	81	105	949
1969	79	68	79	87	86	77	87	83	87	83	94	101	1,011
1970	85	84	106	80	87	88	110	106	78	95	68	74	1,061
1971	83	75	77	68	76	86	85	72	78	73	74	76	923
1972	61	62	75	82	75	71	98	85	83	62	80	81	915
1973	75	75	95	85	64	66	61	85	89	88	66	86	935
1974	56	62	81	60	70	73	67	62	53	70	80	72	806
1975	67	65	87	73	97	94	57	75	69	66	71	89	910
1976	79	78	88	78	69	79	60	70	82	78	77	100	938
1977	65	71	89	79	65	79	70	91	68	74	96	107	954
1978	75	54	95	63	64	69	68	77	65	84	83	72	869
1979	63	60	86	75	45	64	66	75	69	79	72	93	847
1980	48	55	66	59	47	56	60	53	45	58	61	49	657
1981	69	60	58	61	74	65	61	63	68	71	59	57	766
1982	55	53	59	59	67	45	47	71	53	69	65	66	709
1983	42	59	53	63	62	61	65	51	59	43	54	52	664
1984	65	48	58	50	56	48	46	50	71	53	55	58	658
1985	56	47	50	65	75	50	51	50	58	61	56	64	683
1986	56	50	70	69	59	53	42	54	54	52	59	51	669
1987	62	43	57	52	63	59	62	49	62	61	55	80	705
1988	49	58	69	54	79	50	54	52	64	59	43	70	701
1989	76	65	80	59	67	73	52	65	82	50	41	66	776
1990	48	44	55	39	56	64	41	34	48	35	40	44	548
1991	45	39	70	30	34	29	44	47	41	36	35	53	503
1992	34	33	34	47	33	29	23	27	28	38	30	40	396
1993	27	40	37	39	44	33	33	27	34	39	43	40	436
1994	36	31	44	35	27	33	29	37	17	27	32	30	378
1995	38	35	26	33	34	41	27	34	34	32	38	46	418
1996	40	47	35	38	28	29	30	35	49	24	33	30	418
1997	36	25	30	30	40	22	39	26	26	29	39	35	377
1998	29	29	32	36	31	22	40	19	37	36	49	30	390
1999	32	31	35	35	34	24	35	26	28	38	29	37	384
2000	32	26	46	32	39	32	33	29	36	29	44	29	407
2001	44	30	31	32	31	41	34	37	35	51	41	37	444
2002	32	31	45	31	45	32	27	25	31	30	31	37	397
2003	21	41	36	28	31	28	20	23	23	24	24	31	330
2004	32	22	30	30	46	28	27	26	22	28	25	27	343
2005	33	27	47	21	29	23	30	25	25	33	17	36	346
2006	24	37	23	23	27	23	25	22	43	20	31	39	337
2007	23	23	32	25	26	28	28	20	23	37	26	41	332
2008	28	20	37	25	25	20	27	27	18	25	26	25	303
2009	31	18	23	32	19	30	19	21	14	28	21	34	290
2010	26	25	23	20	31	26	26	18	17	36	12	28	288
2011	18	20	34	31	30	24	25	14	12	22	30	27	287
2012	30	20	25	19	23	22	17	25	17	34	26	24	282
2013	14	24	24	19	18	13	24	20	19	14	23	30	242
2014	24												
Ave	49	47	56	54	54	52	52	50	50	50	49	56	619
Max	85	84	106	103	97	94	110	106	89	95	96	107	1,061
Min	14	18	23	19	18	13	17	14	12	14	12	20	242

Fatalities by Week (2009 to 2014)

Week Ending	2009	2010	2011	2012	2013	2014	Cumulative 2014	% Change 2014-2013	12 Month Moving Total
5-Jan	7	3	2	3	1	0	0	-100%	241
12-Jan	10	5	6	7	3	5	5	+25%	243
19-Jan	4	6	3	8	6	7	12	+20%	244
26-Jan	4	5	4	9	4	8	20	+43%	248
2-Feb	6	9	6	5	3				
9-Feb	6	7	5	3	8				
16-Feb	7	4	6	7	6				
23-Feb	4	8	3	6	6				
2-Mar	1	7	3	2	2				
9-Mar	3	2	10	3	4				
16-Mar	6	8	6	11	6				
23-Mar	6	3	9	5	10				
30-Mar	8	7	9	6	2				
6-Apr	5	4	6	7	4				
13-Apr	5	5	9	2	6				
20-Apr	11	7	7	6	4				
27-Apr	9	1	6	3	5				
4-May	6	6	6	10	6				
11-May	7	8	6	2	3				
18-May	1	4	7	4	1				
25-May	2	11	10	6	2				
1-Jun	6	5	5	2	9				
8-Jun	4	7	4	8	2				
15-Jun	9	4	6	3	3				
22-Jun	7	8	7	8	5				
29-Jun	9	7	6	3	1				
6-Jul	3	7	4	2	5				
13-Jul	6	2	8	5	7				
20-Jul	4	3	6	5	4				
27-Jul	5	8	6	5	5				
3-Aug	4	10	3	1	8				
10-Aug	7	3	5	5	1				
17-Aug	6	5	3	5	3				
24-Aug	3	5	2	6	6				
31-Aug	3	1	3	8	5				
7-Sep	2	5	1	5	5				
14-Sep	4	1	4	6	2				
21-Sep	4	4	1	3	3				
28-Sep	3	5	5	3	8				
5-Oct	2	9	4	7	3				
12-Oct	6	10	5	8	2				
19-Oct	8	5	3	9	3				
26-Oct	8	7	3	6	3				
2-Nov	5	8	8	6	5				
9-Nov	3	1	6	7	8				
16-Nov	9	2	12	6	2				
23-Nov	6	3	9	5	8				
30-Nov	4	5	2	9	4				
7-Dec	5	4	10	7	6				
14-Dec	8	8	3	4	10				
21-Dec	11	6	7	1	9				
28-Dec	6	8	6	8	4				
31-Dec	2	2	1	1	1				
Total	290	288	287	282	242				

Alcohol Related Fatalities

NOTE: UPDATES TO THIS DATA WERE NOT AVAILABLE AT TIME OF REPORT

- 24% of fatally injured and tested drivers and riders had a BAC at 0.05 g/100ml or over (41 of 172) compared to 25% over the previous 12 month period (43 of 169).
- In Melbourne, 21 drivers/riders fatally injured and tested were at or over 0.05, with 38% of these having a BAC in excess of 0.15 g/100ml. Across rural Victoria, 20 drivers/riders fatally injured and tested were at or over 0.05, with 65% of these having a BAC over 0.15.
- Of the 41 drivers and riders fatally injured and tested at or over 0.05, 15% (6) were aged under 21, 39% (16) were aged 21-29, 27% (11) were aged 30-39 and 20% (8) were aged 40 years and over. In the previous year (43 fatally injured) the corresponding figures were 19% (8), 28% (12), 19% (8) and 35% (15), respectively.

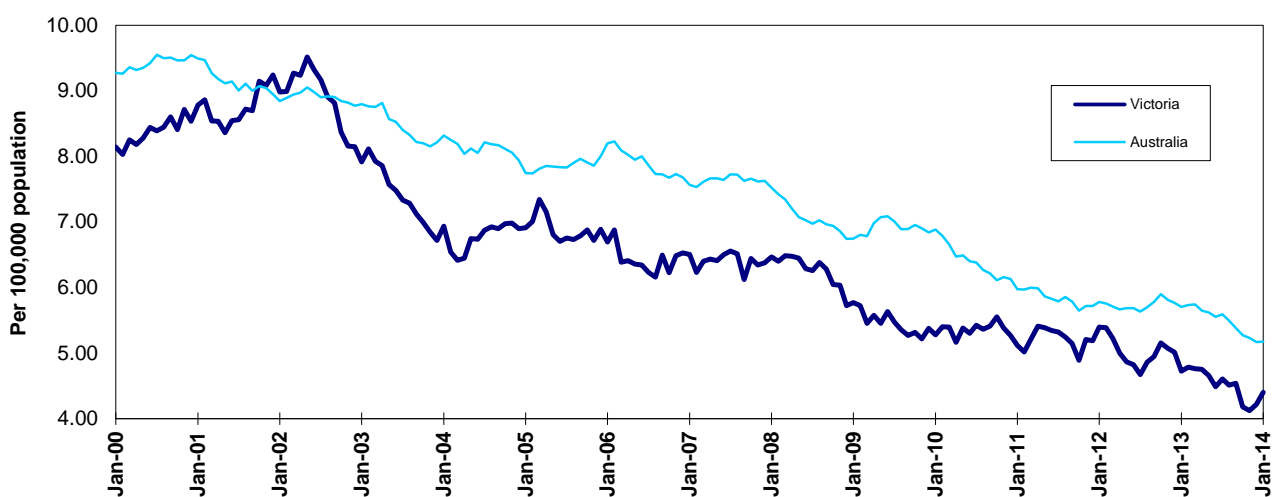
BAC Fatalities (12 months to April 2010)

Category	2010	2009	2008	2010 v 2009		2010 v 2008		5 Year Av
Melbourne Drivers and Riders								
<0.05	55	63	63	(-8)	(-13%)	(-8)	(-13%)	62
[a] at 0.05 & above	21	17	25	(+4)	(+24%)	(-4)	(-16%)	21
% at 0.05 & above	(28%)	(21%)	(28%)					(+25%)
[b] >0.15	8	10	12	(-2)	(-20%)	(-4)	(-33%)	9
%>0.15	(11%)	(13%)	(14%)					(+11%)
[b] as a % of [a]	(38%)	(59%)	(48%)					(+43%)
BAC Unknown	5	3	1	(+2)	(+67%)	(+4)	(+400%)	3
Country Drivers and Riders								
<0.05	76	63	90	(+13)	(+21%)	(-14)	(-16%)	78
[a] at 0.05 & above	20	26	32	(-6)	(-23%)	(-12)	(-38%)	26
% at 0.05 & above	(21%)	(29%)	(26%)					(+25%)
[b] >0.15	13	17	20	(-4)	(-24%)	(-7)	(-35%)	17
%>0.15	(14%)	(19%)	(16%)					(+16%)
[b] as a % of [a]	(65%)	(65%)	(63%)					(+64%)
BAC Unknown	7	2	1	(+5)	(+250%)	(+6)	(+600%)	5
Victorian Total Drivers and Riders								
<0.05	131	126	153	(+5)	(+4%)	(-22)	(-14%)	140
[a] at 0.05 & above	41	43	57	(-2)	(-5%)	(-16)	(-28%)	47
% at 0.05 & above	(24%)	(25%)	(27%)					(+25%)
[b] >0.15	21	27	32	(-6)	(-22%)	(-11)	(-34%)	26
%>0.15	(12%)	(16%)	(15%)					(+14%)
[b] as a % of [a]	(51%)	(63%)	(56%)					(+54%)
BAC Unknown	12	5	2	(+7)	(+140%)	(+10)	(+500%)	7
Victorian Total Pedestrians								
<0.05	32	35	38	(-3)	(-9%)	(-6)	(-16%)	33
[a] at 0.05 & above	8	21	9	(-13)	(-62%)	(-1)	(-11%)	14
% at 0.05 & above	(20%)	(38%)	(19%)					(+30%)
[b] >0.15	3	10	8	(-7)	(-70%)	(-5)	(-63%)	9
%>0.15	(8%)	(18%)	(17%)					(+19%)
[b] as a % of [a]	(38%)	(48%)	(89%)					(+62%)
BAC Unknown	6	4	2	(+2)	(+50%)	(+4)	(+200%)	4

The National Picture

State	Fatalities (12 months to January)					2014 v 2013	
	2014	2013	2012	2011			
NSW	362	352	368	390	+10	(+3%)	
VIC	252	266	299	280	-14	(-5%)	
QLD	258	287	277	251	-29	(-10%)	
SA	96	98	97	109	-2	(-2%)	
WA	149	195	176	194	-46	(-24%)	
TAS	37	32	23	30	+5	(+16%)	
NT	38	48	48	45	-10	(-21%)	
ACT	6	13	4	20	-7	(-54%)	
AUST TOTAL	1,198	1,291	1,292	1,319	-93	(-7%)	
AUST minus VIC	946	1,025	993	1,039	-79	(-8%)	

State	Fatalities per 10,000 registered vehicles (12 months to January)			Fatalities per 100,000 population (12 months to January)		
	2014	2013	2012	2014	2013	2012
NSW	0.72	0.71	0.76	4.88	4.82	5.10
VIC	0.57	0.61	0.70	4.38	4.72	5.40
QLD	0.70	0.81	0.80	5.53	6.28	6.19
SA	0.73	0.76	0.76	5.74	5.92	5.92
WA	0.72	0.97	0.90	5.90	8.00	7.47
TAS	0.84	0.74	0.54	7.21	6.25	4.50
NT	2.50	3.31	3.45	15.84	20.41	20.74
ACT	0.22	0.48	0.15	1.56	3.46	1.09
AUST TOTAL	0.69	0.76	0.78	5.17	5.71	5.78
AUST minus VIC	0.73	0.81	0.81	5.43	6.02	5.91



Victoria v Australia - 12 Month Moving Fatality Rate

Booze-Bus Random Breath Testing

12 months to December 2013 (monthly totals)*

2013												
	Jan	Feb	Mar	Apr	May	Jun	Jul	Aug	Sep	Oct	Nov	Dec
Melbourne	93,928	79,064	86,312	89,067	80,338	84,055	74,595	72,612	81,321	81,035	78,065	108,302
Country	7,290	7,258	8,046	9,786	8,335	4,227	9,038	4,343	1,891	9,159	4,834	11,603
Vic Total	101,218	86,322	94,358	98,853	88,673	88,282	83,633	76,955	83,212	90,194	82,899	119,905

12 months to December 2013 vs previous 12 months

	2013	2012	2011	2013 v 2012		2013 v 2011	
Melbourne	1,008,694	1,059,920	928,178	-51226	(-5%)	+80516	(+9%)
Country	85,810	110,484	155,069	-24674	(-22%)	-69259	(-45%)
Vic Total	1,094,504	1,170,404	1,083,247	-75900	(-6%)	+11257	(+1%)

*Due to police industrial action, reliable random breath testing data is not available from May to October 2011. For the rolling 12 month totals, 2010 data has been used as a substitute in the relevant months.

Mobile Safety Camera Data

Speed Infringements Issued from Mobile Cameras (monthly totals)

Monthly Average = 39,163

2013

Jan	Feb	Mar	Apr	May	Jun	Jul	Aug	Sep	Oct	Nov	Dec
52,184	39,407	36,296	40,184	42,428	37,432	43,863	35,702	35,440	38,868	36,079	32,072

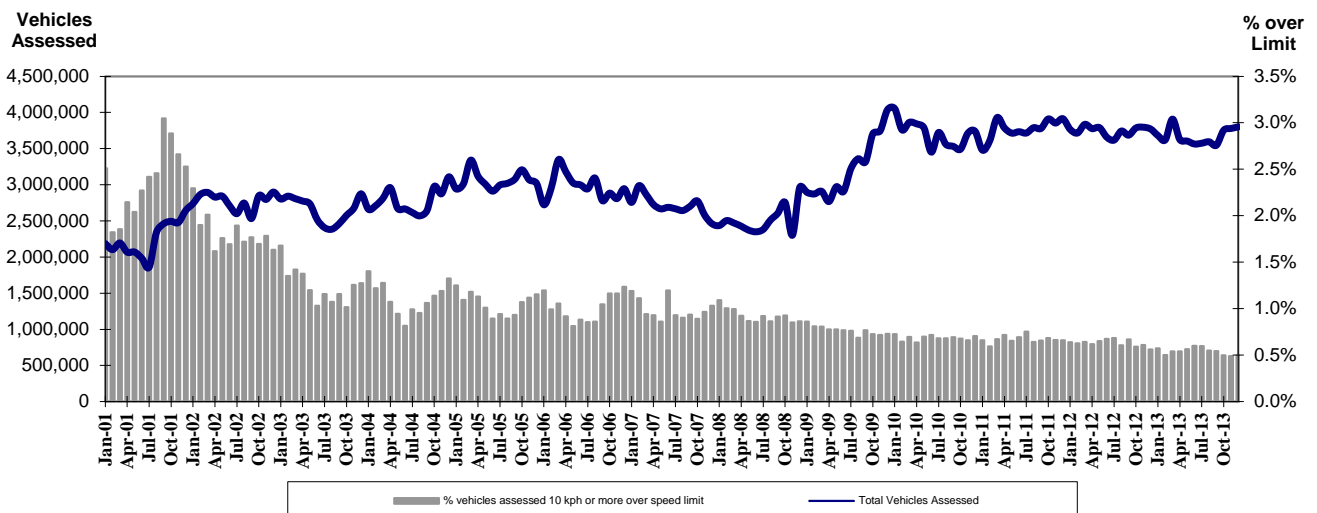
Excessive Speed Infringements (ESI) Issued from Mobile Cameras (monthly totals)

Monthly Average = 343

2013

Jan	Feb	Mar	Apr	May	Jun	Jul	Aug	Sep	Oct	Nov	Dec
363	341	292	342	398	361	387	339	338	366	306	286

Notes: An ESI is defined as 25km/h over the speed limit except in a 110km/h zone where it is 20km/h over the limit.



Mobile Safety Cameras – Vehicles assessed and percentage of vehicles assessed 10km/h or more over speed limit per month

Explanations and References

Hi-AlcTime is those times of the day and week (*shaded* in the table below) when casualty crashes are ten times more likely to involve alcohol than casualty crashes at other (Lo-AlcTime) times.

	12am - 6am	6am - 8am	8am - 10am	10am - 2pm	2pm - 4pm	4pm - 6pm	6pm - 12pm
Monday							
Tuesday							
Wednesday							
Thursday							
Friday							
Saturday							
Sunday							

Police Service Areas align with Local Government Areas. Most Police Service Areas are equivalent to a single Local Government Area, while the remainder comprise two or three Local Government Areas.

Police Service Area	Local Government Area(s)	Police Service Area	Local Government Area(s)
BALLARAT	BALLARAT, PYRENEES	MAROONDAH	MAROONDAH
BANYULE	BANYULE	MELBOURNE	MELBOURNE
BASS COAST	BASS COAST, SOUTH GIPPSLAND	MELTON	MELTON
BAW BAW	BAWBAW	MILDURA	MILDURA
BENALLA	BENALLA, MANSFIELD, MURRINDINDI	MITCHELL	MITCHELL, STRATHBOGIE
BENDIGO	GREATER BENDIGO	MONASH	MONASH
BOROONDARA	BOROONDARA	MOONEE VALLEY	MOONEE VALLEY
BRIMBANK	BRIMBANK	MOORABOOL	GOLDEN PLAINS, HEPBURN, MOORABOOL
CAMPASPE	CAMPASPE	MORELAND	MORELAND
CARDINIA	CARDINIA	MORNINGTON PENINSULA	MORNINGTON PENINSULA
CASEY	CASEY	NILLUMBIK	NILLUMBIK
CENTRAL GOLDFIELDS	CENTRAL GOLDFIELDS, LODDON	NORTHERN GRAMPIANS	ARARAT, NORTHERN GRAMPIANS, YARRIAMBICK
GREATER DANDENONG	GREATER DANDENONG	PORT PHILLIP	PORT PHILLIP
DAREBIN	DAREBIN	SHEPPARTON	GREATER SHEPPARTON
EAST GIPPSLAND	EAST GIPPSLAND	SOUTHERN GRAMPIANS	GLENELG, SOUTHERN GRAMPIANS
FRANKSTON	FRANKSTON	STONNINGTON	STONNINGTON
GEELONG	GREATER GEELONG, QUEENSCLIFF	SURFCOAST	SURFCOAST, COLAC OTWAY
GLENEIRA	GLENEIRA, BAYSIDE	SWANHILL	BULOKE, GANNAWARRA, SWAN HILL
HOBSONS BAY	HOBSONSBAY	WANGARATTA	ALPINE, MOIRA, WANGARATTA
HORSHAM	HINDMARSH, HORSHAM, WESTWIMMERA	WARRNAMBOOL	CORANGAMITE, MOYNE, WARRNAMBOOL
HUME	HUME	WELLINGTON	WELLINGTON
KINGSTON	KINGSTON	WHITEHORSE	WHITEHORSE
KNOX	KNOX	WHITTLESEA	WHITTLESEA
LATROBE	LATROBE	WODONGA	INDIGO, TOWONG, WODONGA
MACEDON RANGES	MOUNT ALEXANDER, MACEDON RANGES	WYNDHAM	WYNDHAM
MANNINGHAM	MANNINGHAM	YARRA	YARRA
MARIBYRNONG	MARIBYRNONG	YARRA RANGES	YARRA RANGES

Useful Internet Sites

TAC Sites

- TAC Safety (Road Safety) www.tacsafety.com.au
- TAC How safe is your car www.howsafeisyourcar.com.au
- TAC Learners Log www.learnerslog.com.au
- TAC Motorcycle Safety Website www.spokes.com.au
- TAC Corporate site www.tac.vic.gov.au

Victorian Sites:

- VicRoads www.vicroads.vic.gov.au
- Victoria Police www.police.vic.gov.au
- Parliamentary Road Safety Committee www.parliament.vic.gov.au/rsc/
- ARRB Transport Research www.arrb.com.au
- RACV www.racv.com.au
- Monash University Accident Research Centre www.monash.edu.au/muarc
- Roadsafe www.roadsafe.org.au
- Cameras Save Lives www.camerassavelives.vic.gov.au

National and Interstate Sites:

- Australian Transport Safety Bureau www.atsb.gov.au
- Roads and Traffic Authority (NSW) www.rta.nsw.gov.au
- Queensland Transport - Road Safety transport.qld.gov.au/Home/Safety/Road
- Department of Transport (SA) www.transport.sa.gov.au/index.htm
- Main Roads Western Australia - Road Safety www.mrwa.wa.gov.au

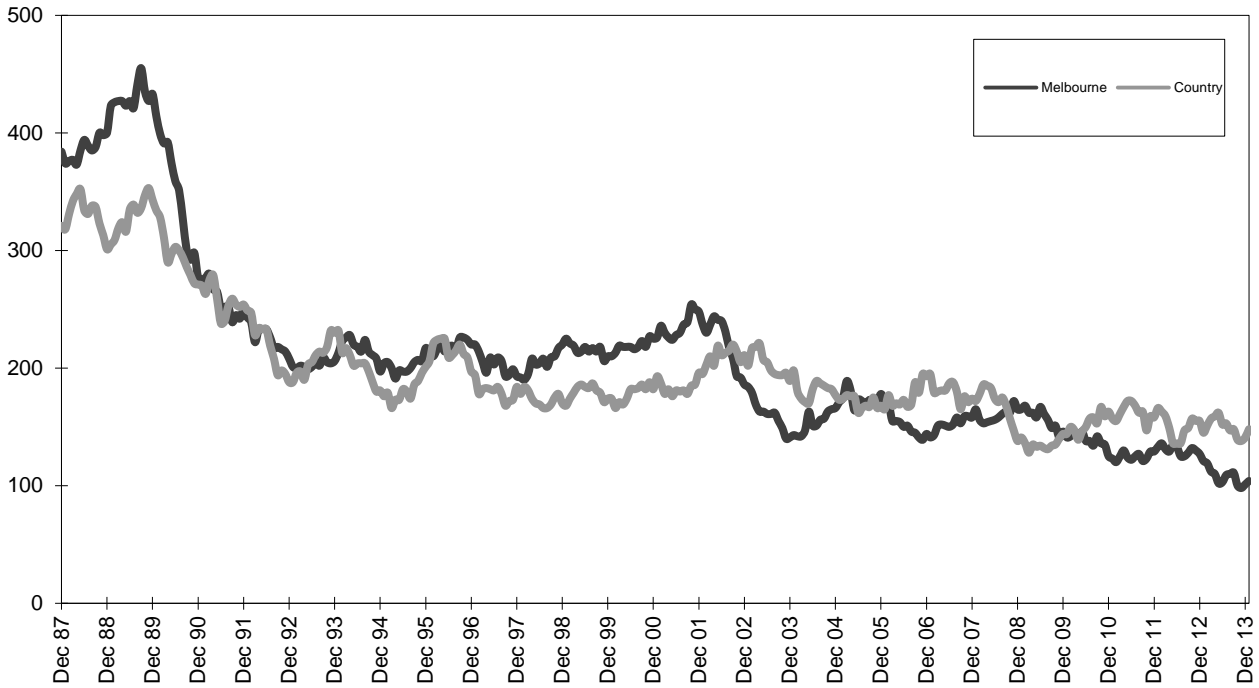
International Sites:

- National Highway Traffic Safety Admin (USA) www.nhtsa.dot.gov
- Swedish Road and Transport Institute (VTI) www.vti.se
- SWOV Institute for Road Safety Research www.swov.nl

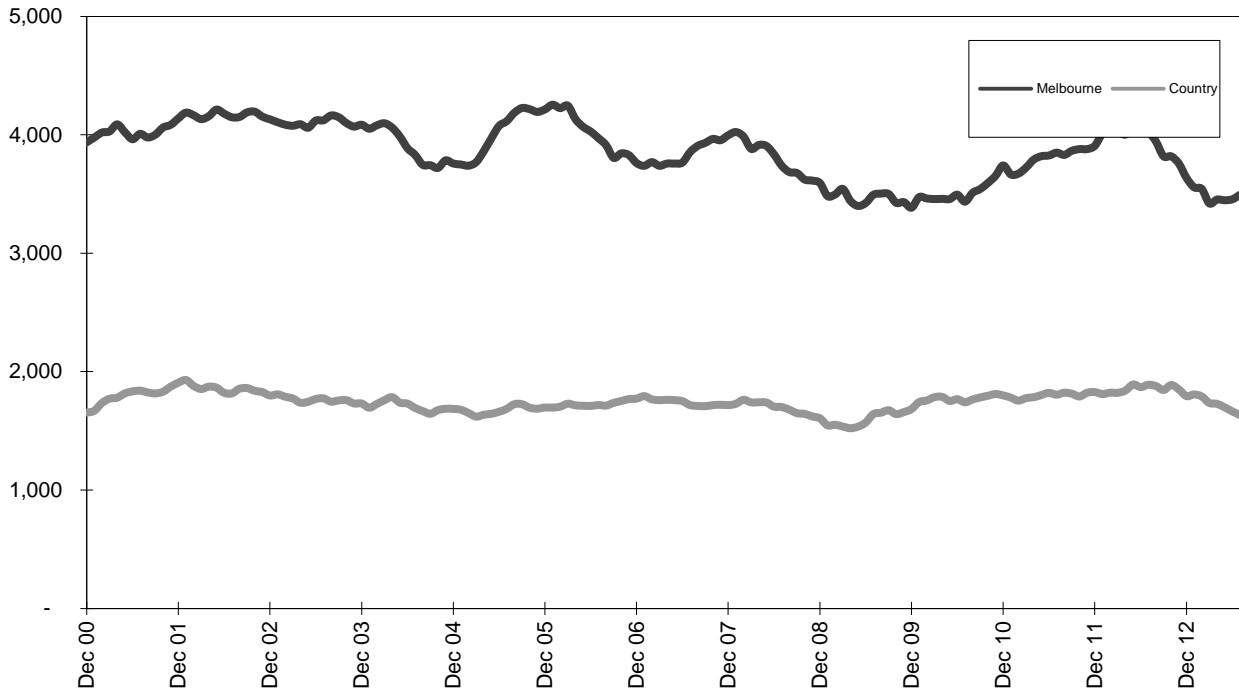
Related Sites:

- Australian Drug Foundation www.adf.org.au
- Amy Gillett Foundation www.amygillett.org.au

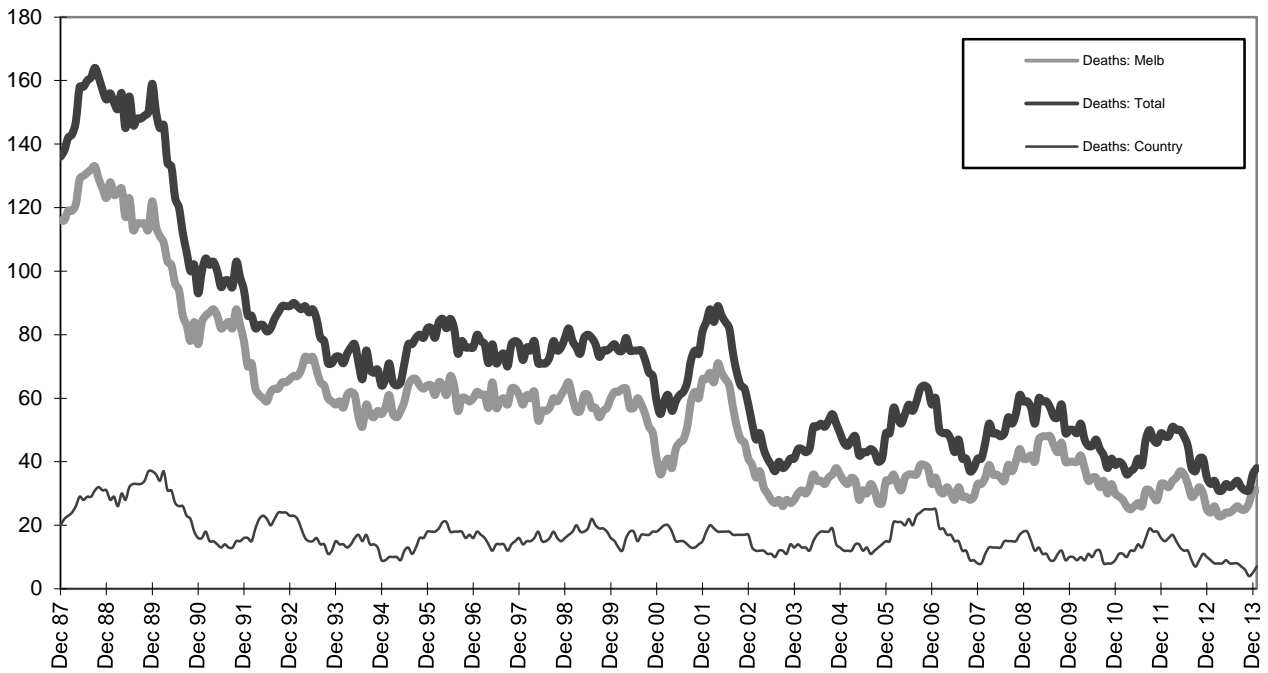
Figures



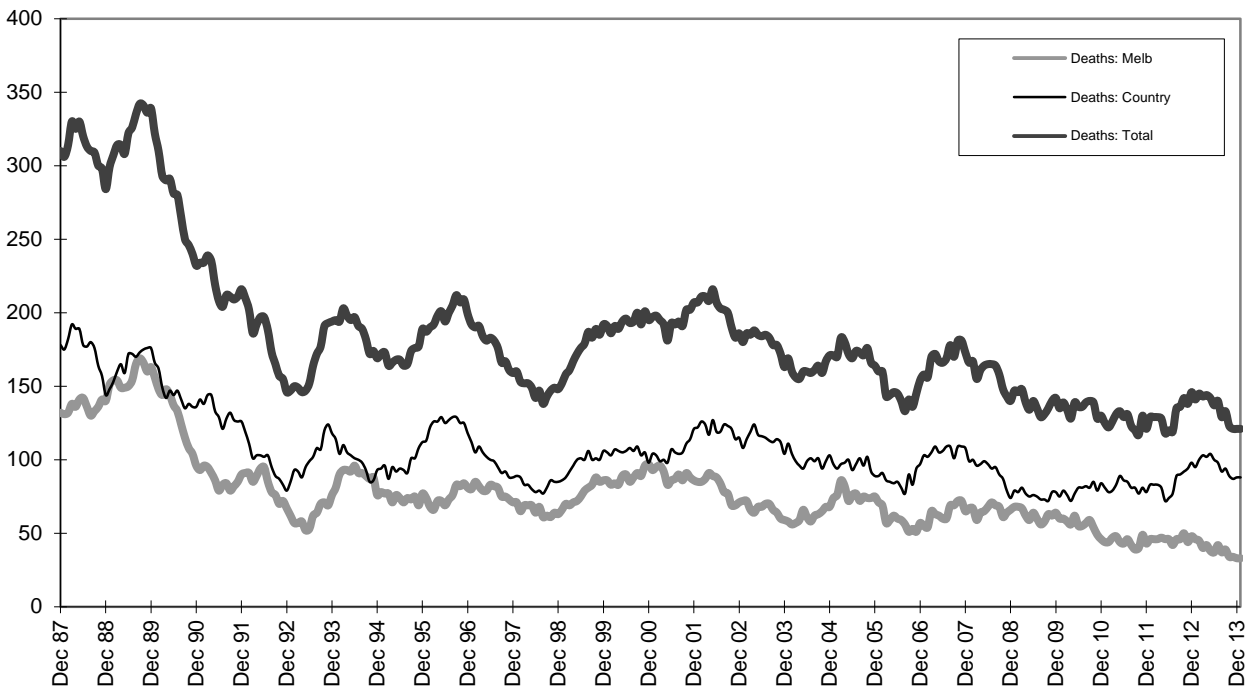
Graph 1a - Melbourne/country fatalities



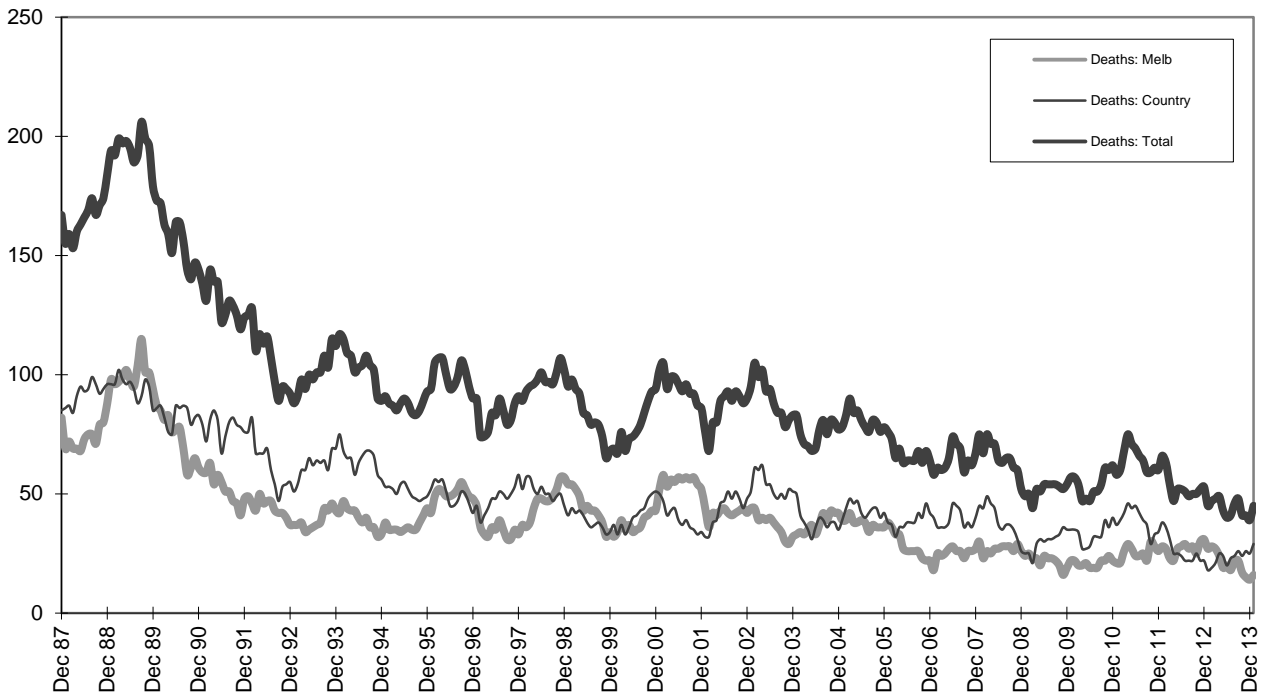
Graph 1b - Melbourne/country Claims involving an acute hospital admission



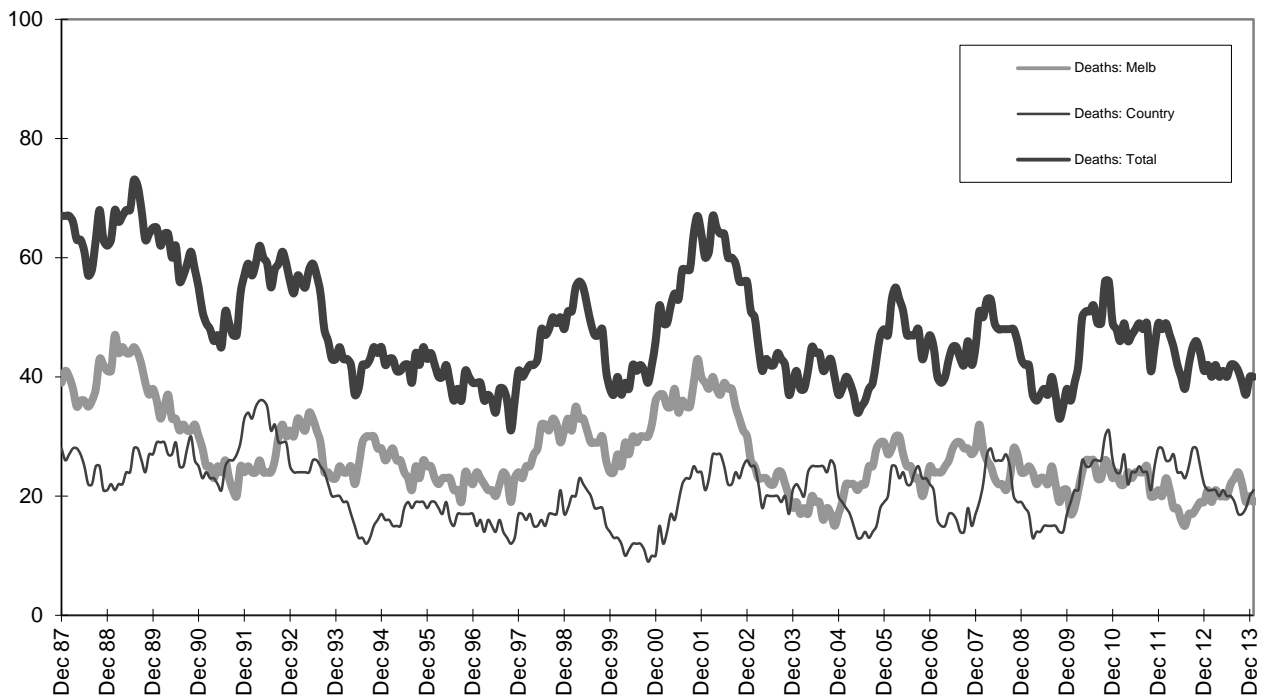
Graph 2a - Pedestrian fatalities (Melbourne/country)



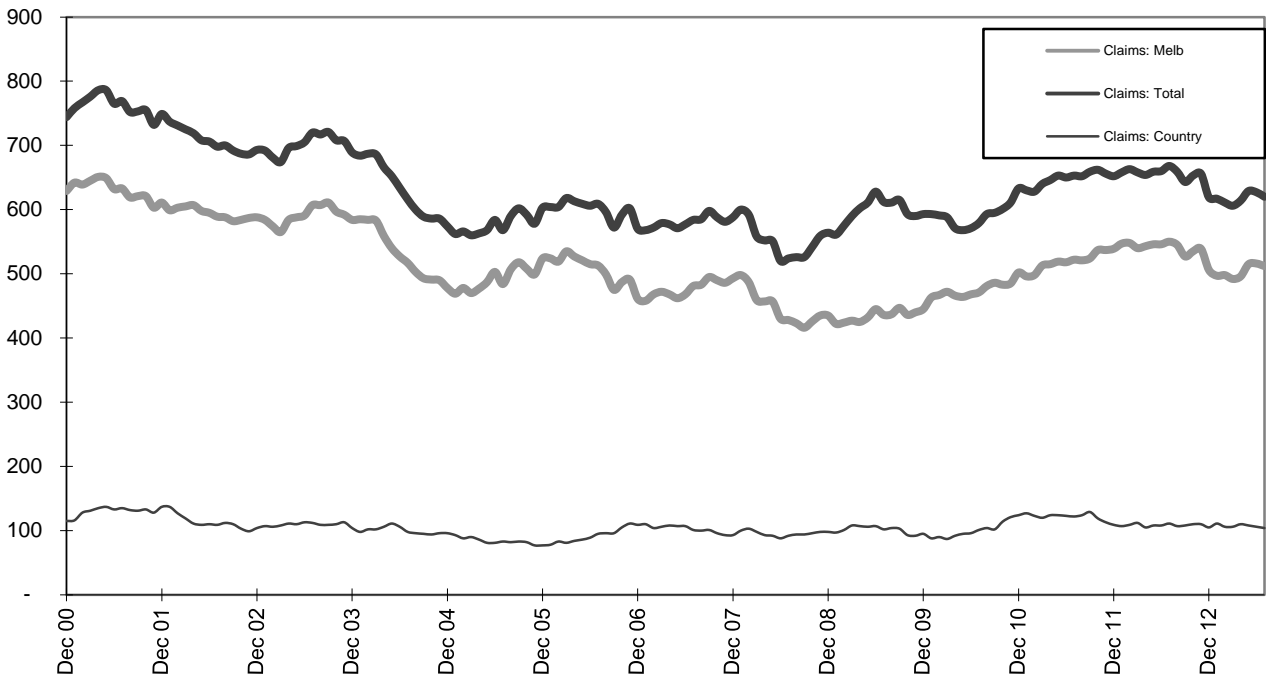
Graph 2b - Driver fatalities (Melbourne/country)



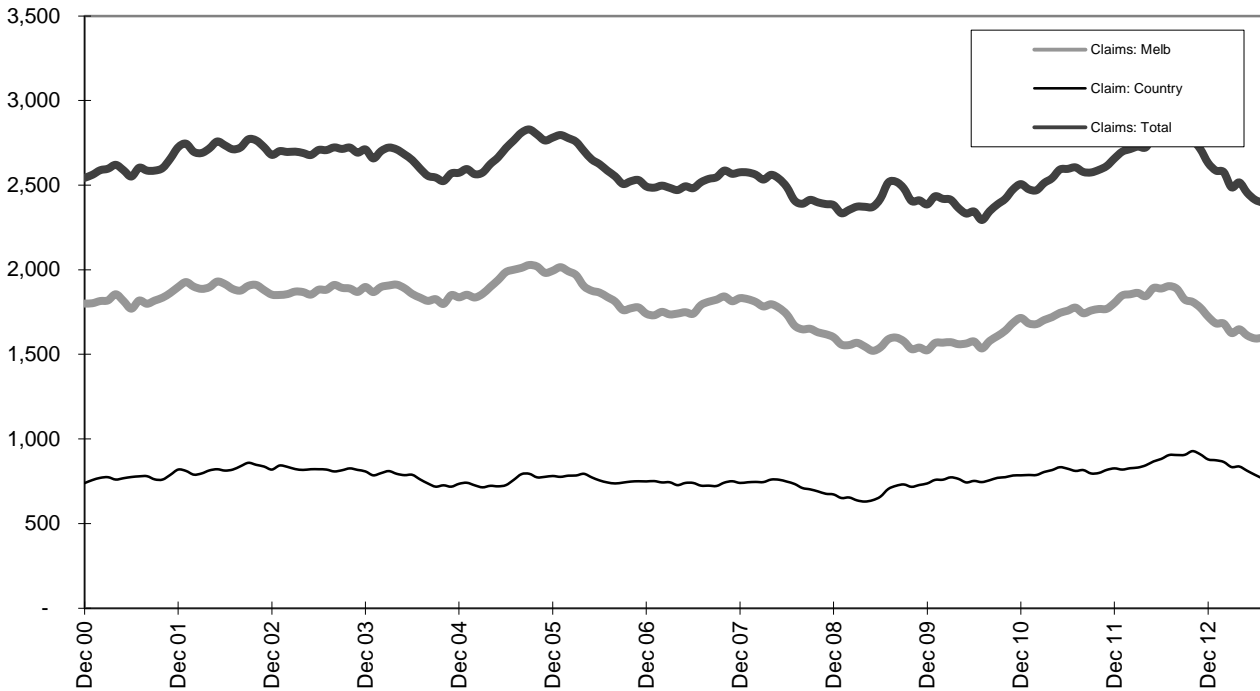
Graph 2c - Passenger fatalities (Melbourne/country)



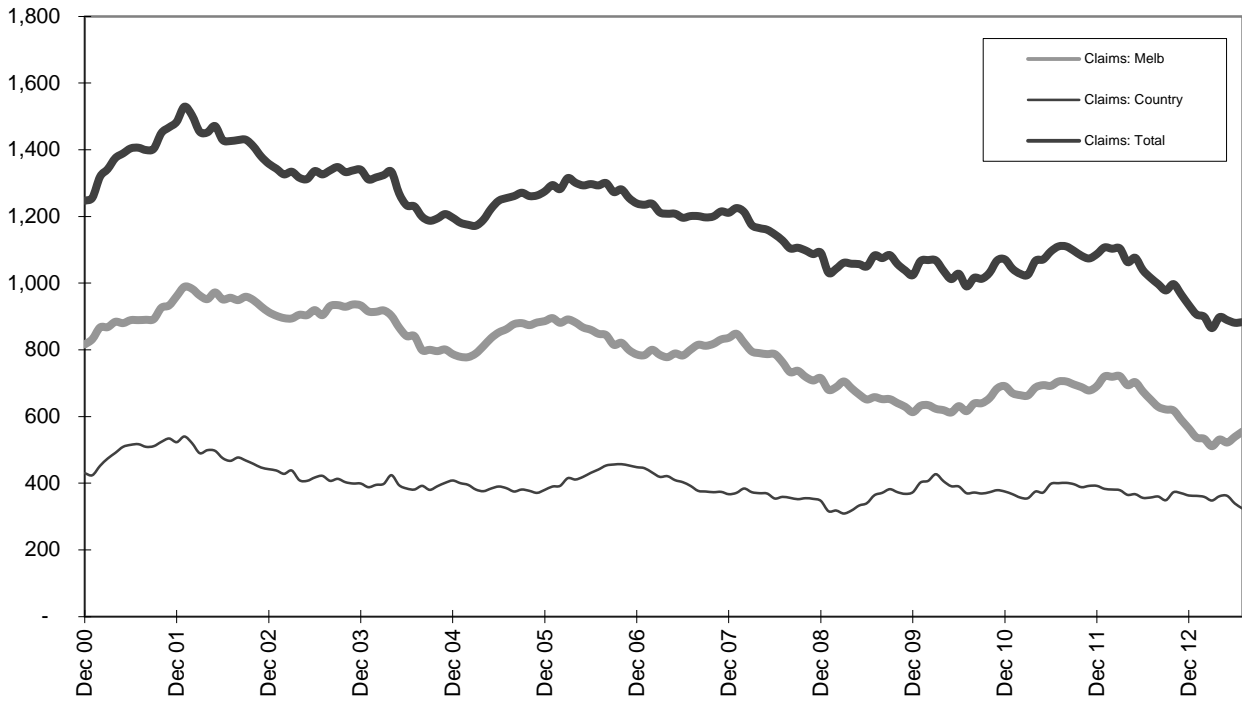
Graph 2d - Motorcyclist fatalities (Melbourne/country)



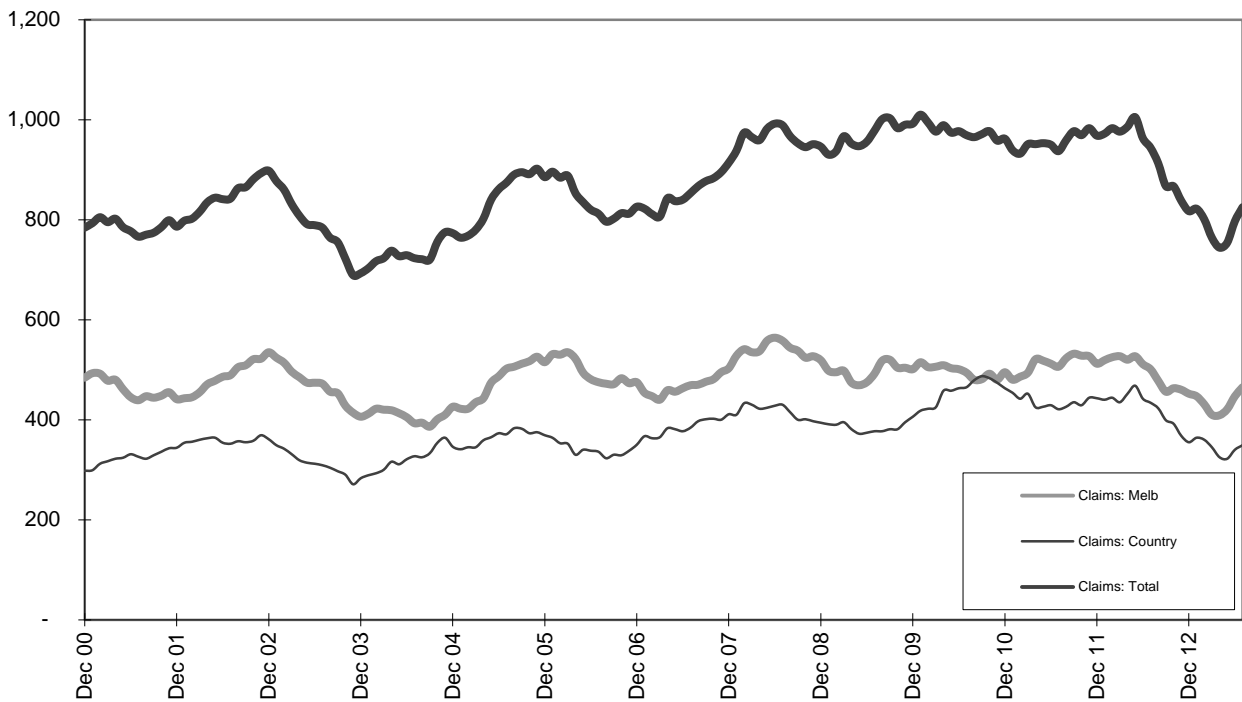
Graph 3a - Pedestrian Claims involving an acute hospital admission (Melbourne/country)



Graph 3b - Driver Claims involving an acute hospital admission (Melbourne/country)



Graph 3c - Passenger Claims involving an acute hospital admission (Melbourne/country)



Graph 3d - Motorcyclist Claims involving an acute hospital admission (Melbourne/country)