



# ROAD SAFETY STATISTICAL SUMMARY APRIL 2010



TRANSPORT  
ACCIDENT  
COMMISSION

60 Brougham Street  
Geelong Vic 3220  
PO Box 742  
Geelong Vic 3220  
Ausdoc DX 216079 Geelong

Telephone 1300 654 329  
STD Toll Free 1800 332 556  
Fax: 03 9656 9300  
www.tac.vic.gov.au  
ABN 22 033 947 623



## Contents

|                                                         |       |
|---------------------------------------------------------|-------|
| <b>Status Report</b> .....                              | 3     |
| Road Toll (updated snapshot)                            |       |
| Overview                                                |       |
| <b>Tables</b> .....                                     | 4-7   |
| Fatalities (rolling 12 month)                           |       |
| Serious Injuries (rolling 12 month)                     |       |
| Overview                                                |       |
| Sex                                                     |       |
| Roaduser                                                |       |
| Location                                                |       |
| Age Group                                               |       |
| Alctime                                                 |       |
| Police District                                         |       |
| Accident Type                                           |       |
| Victorian Road Deaths – monthly totals since 1951 ..... | 8     |
| Fatalities by Week (2004 to 2009) .....                 | 9     |
| Alcohol Related Deaths .....                            | 10    |
| The National Picture .....                              | 11    |
| Police Enforcement .....                                | 12    |
| Explanations and References .....                       | 13    |
| Alcohol times (“Alctime”) explained                     |       |
| Useful internet sites                                   |       |
| <b>Graphs</b> (12 month moving totals) .....            | 14-18 |

## Status Report

### Road Toll (year to date, accurate as at midnight 30 April 2010)

- The road toll in 2010 stands at 104, equivalent to the same stage in 2009.
- 29 people died in March and 23 in April on Victorian roads. This compares to 23 in March 2009 and 32 in April 2009.

\* Due to a change in coding of accident injury severity following the introduction of the new crash data system by Victoria Police, it is not possible to compare serious injury data from 2006 onwards with previous years' data, as a discontinuity in the data series has been introduced with the introduction of a new reporting system on 1 January 2006.

| Category                                   | 2010       | 2009       | 2008       | 2010 v 2009 | 2010 v 2008  | 5 Year Av  |
|--------------------------------------------|------------|------------|------------|-------------|--------------|------------|
| <b>Casualties (Rolling 12 Month Total)</b> |            |            |            |             |              |            |
| <b>Fatal (to April)</b>                    | <b>290</b> | <b>297</b> | <b>339</b> | <b>-7</b>   | <b>(-2%)</b> | <b>317</b> |
| per 10,000 veh                             | 0.71       | 0.75       | 0.87       | -0.04       | (-5%)        | 0.84       |
| per 100,000 pop                            | 5.30       | 5.56       | 6.47       | -0.26       | (-5%)        | 6.19       |

| Category                                  | 2010       | 2009       | 2008       | 2010 v 2009 | 2010 v 2008 | 5 Year Av  |
|-------------------------------------------|------------|------------|------------|-------------|-------------|------------|
| <b>Accidents (Rolling 12 Month Total)</b> |            |            |            |             |             |            |
| <b>Fatal (to April)</b>                   | <b>270</b> | <b>270</b> | <b>294</b> | <b>0</b>    | <b>(0%)</b> | <b>288</b> |
| per 10,000 veh                            | 0.66       | 0.68       | 0.76       | -0.02       | (-3%)       | 0.76       |
| per 100,000 pop                           | 4.94       | 5.06       | 5.61       | -0.12       | (-2%)       | 5.60       |

| Category                                   | 2009         | 2008         | 2007         | 2009 v 2008 | 2009 v 2007   | 3 Year Av    |
|--------------------------------------------|--------------|--------------|--------------|-------------|---------------|--------------|
| <b>Casualties (Rolling 12 Month Total)</b> |              |              |              |             |               |              |
| <b>*Serious (to October)</b>               | <b>6,463</b> | <b>7,429</b> | <b>7,747</b> | <b>-966</b> | <b>(-13%)</b> | <b>7,213</b> |
| per 10,000 veh                             | 16.1         | 18.9         | 20.2         | -2.8        | (-15%)        | 18.0         |
| per 100,000 pop                            | 119.6        | 140.6        | 149.4        | -21         | (-15%)        | 133.4        |

| Category                                  | 2009         | 2008         | 2007         | 2009 v 2008 | 2009 v 2007   | 3 Year Av    |
|-------------------------------------------|--------------|--------------|--------------|-------------|---------------|--------------|
| <b>Accidents (Rolling 12 Month Total)</b> |              |              |              |             |               |              |
| <b>*Serious (to October)</b>              | <b>5,451</b> | <b>6,155</b> | <b>6,274</b> | <b>-704</b> | <b>(-11%)</b> | <b>5,960</b> |
| per 10,000 veh                            | 13.6         | 15.7         | 16.4         | -2.1        | (-13%)        | 14.8         |
| per 100,000 pop                           | 100.8        | 116.5        | 121.0        | -15.7       | (-13%)        | 110.2        |

**Note:** Data is subject to revision as additional information about known accidents is received, and as new accident reports are received and processed.

## Fatalities: 12 months to April

| Category        | 2010 | 2009 | 2008 | 2010 v 2009 |        | 2010 v 2008 |        | 5 Year Av |
|-----------------|------|------|------|-------------|--------|-------------|--------|-----------|
| <b>Overview</b> |      |      |      |             |        |             |        |           |
| Fatalities      | 290  | 297  | 339  | -7          | (-2%)  | -49         | (-14%) | 317       |
| Accidents       | 270  | 270  | 294  | 0           | (0%)   | -24         | (-8%)  | 288       |
| <b>Sex</b>      |      |      |      |             |        |             |        |           |
| Male            | 216  | 199  | 242  | 17          | (9%)   | -26         | (-11%) | 227       |
| Female          | 73   | 98   | 97   | -25         | (-26%) | -24         | (-25%) | 89        |
| <b>Roaduser</b> |      |      |      |             |        |             |        |           |
| Bicyclist       | 8    | 10   | 5    | -2          | (-20%) | 3           | (60%)  | 8         |
| Driver          | 139  | 139  | 161  | 0           | (0%)   | -22         | (-14%) | 151       |
| Motorcyclist    | 50   | 36   | 53   | 14          | (39%)  | -3          | (-6%)  | 46        |
| Passenger       | 47   | 52   | 71   | -5          | (-10%) | -24         | (-34%) | 60        |
| Pedestrian      | 46   | 60   | 49   | -14         | (-23%) | -3          | (-6%)  | 51        |
| <b>Location</b> |      |      |      |             |        |             |        |           |
| Melbourne       | 142  | 162  | 155  | -20         | (-12%) | -13         | (-8%)  | 153       |
| Rural Victoria  | 148  | 135  | 184  | 13          | (10%)  | -36         | (-20%) | 164       |
| <b>Agegroup</b> |      |      |      |             |        |             |        |           |
| 0-4             | 4    | 7    | 3    | -3          | (-43%) | 1           | (33%)  | 4         |
| 5-15            | 10   | 4    | 12   | 6           | (150%) | -2          | (-17%) | 9         |
| 16-17           | 7    | 11   | 11   | -4          | (-36%) | -4          | (-36%) | 11        |
| 18-20           | 28   | 39   | 27   | -11         | (-28%) | 1           | (4%)   | 33        |
| 21-25           | 27   | 35   | 47   | -8          | (-23%) | -20         | (-43%) | 39        |
| 26-29           | 22   | 22   | 24   | 0           | (0%)   | -2          | (-8%)  | 25        |
| 30-39           | 44   | 41   | 59   | 3           | (7%)   | -15         | (-25%) | 52        |
| 40-49           | 36   | 45   | 43   | -9          | (-20%) | -7          | (-16%) | 42        |
| 50-59           | 34   | 31   | 46   | 3           | (10%)  | -12         | (-26%) | 34        |
| 60-69           | 27   | 18   | 21   | 9           | (50%)  | 6           | (29%)  | 23        |
| 70+             | 51   | 44   | 46   | 7           | (16%)  | 5           | (11%)  | 45        |
| Unknown         | 0    | 0    | 0    | 0           |        | 0           |        | 0         |
| <b>Altime</b>   |      |      |      |             |        |             |        |           |
| High (Melb)     | 82   | 74   | 83   | 8           | (11%)  | -1          | (-1%)  | 82        |
| High (Rural)    | 65   | 70   | 73   | -5          | (-7%)  | -8          | (-11%) | 79        |
| High (Vic)      | 147  | 144  | 156  | 3           | (2%)   | -9          | (-6%)  | 161       |
| Low (Melb)      | 60   | 88   | 72   | -28         | (-32%) | -12         | (-17%) | 72        |
| Low (Rural)     | 83   | 65   | 111  | 18          | (28%)  | -28         | (-25%) | 84        |
| Low (Vic)       | 143  | 153  | 183  | -10         | (-7%)  | -40         | (-22%) | 156       |
| Unknown         | 0    | 0    | 0    | 0           |        | 0           |        | 0         |

## Fatalities: 12 months to April

| Category                          | 2010      | 2009      | 2008      | 2010 v 2009 | 2010 v 2008   | 5 Year Av |
|-----------------------------------|-----------|-----------|-----------|-------------|---------------|-----------|
| <b>Police Region and Division</b> |           |           |           |             |               |           |
| <b>Region 1</b>                   | <b>19</b> | <b>23</b> | <b>28</b> | <b>-4</b>   | <b>(-17%)</b> | <b>24</b> |
| 1-1 Melbourne                     | 2         | 8         | 8         | -6          | (-75%)        | 6         |
| 1-2 Prahran                       | 3         | 3         | 5         | 0           | (0%)          | 4         |
| 1-3 Caulfield                     | 7         | 5         | 6         | 2           | (40%)         | 6         |
| 1-4 Moorabbin                     | 7         | 7         | 9         | 0           | (0%)          | 7         |
| <b>Region 2</b>                   | <b>63</b> | <b>66</b> | <b>70</b> | <b>-3</b>   | <b>(-5%)</b>  | <b>74</b> |
| 2-1 Altona North                  | 14        | 15        | 26        | -1          | (-7%)         | 17        |
| 2-2 Geelong                       | 20        | 15        | 10        | 5           | (33%)         | 17        |
| 2-3 Ballarat                      | 8         | 14        | 17        | -6          | (-43%)        | 14        |
| 2-4 Horsham                       | 8         | 6         | 4         | 2           | (33%)         | 7         |
| 2-5 Warrnambool                   | 13        | 16        | 13        | -3          | (-19%)        | 18        |
| <b>Region 3</b>                   | <b>68</b> | <b>70</b> | <b>82</b> | <b>-2</b>   | <b>(-3%)</b>  | <b>75</b> |
| 3-1 Mill Park                     | 12        | 14        | 6         | -2          | (-14%)        | 11        |
| 3-2 Broadmeadows                  | 16        | 17        | 12        | -1          | (-6%)         | 15        |
| 3-3 Bendigo                       | 21        | 14        | 20        | 7           | (50%)         | 17        |
| 3-4 Shepparton                    | 8         | 17        | 19        | -9          | (-53%)        | 17        |
| 3-5 Mildura                       | 11        | 8         | 25        | 3           | (38%)         | 15        |
| <b>Region 4</b>                   | <b>77</b> | <b>61</b> | <b>73</b> | <b>16</b>   | <b>(26%)</b>  | <b>69</b> |
| 4-1 Rosanna                       | 7         | 10        | 3         | -3          | (-30%)        | 7         |
| 4-2 Nunawading                    | 21        | 14        | 15        | 7           | (50%)         | 15        |
| 4-3 Knox                          | 16        | 20        | 19        | -4          | (-20%)        | 19        |
| 4-4 Seymour                       | 16        | 12        | 24        | 4           | (33%)         | 17        |
| 4-5 Wangaratta                    | 17        | 5         | 12        | 12          | (240%)        | 11        |
| <b>Region 5</b>                   | <b>63</b> | <b>77</b> | <b>86</b> | <b>-14</b>  | <b>(-18%)</b> | <b>75</b> |
| 5-1 Frankston                     | 11        | 19        | 22        | -8          | (-42%)        | 16        |
| 5-2 Dandenong                     | 21        | 23        | 24        | -2          | (-9%)         | 24        |
| 5-3 Morwell                       | 17        | 13        | 21        | 4           | (31%)         | 18        |
| 5-4 Bairnsdale                    | 14        | 22        | 19        | -8          | (-36%)        | 17        |
| <b>Accident Type</b>              |           |           |           |             |               |           |
| <b>Intersection</b>               |           |           |           |             |               |           |
| Adjacent direction                | 18        | 17        | 31        | 1           | (6%)          | 25        |
| Opposing direction                | 6         | 4         | 13        | 2           | (50%)         | 10        |
| <b>Other</b>                      |           |           |           |             |               |           |
| Head on                           | 36        | 36        | 41        | 0           | (0%)          | 41        |
| Same direction                    | 20        | 15        | 16        | 5           | (33%)         | 19        |
| Manoeuvre/o'taking                | 19        | 20        | 9         | -1          | (-5%)         | 16        |
| On path                           | 7         | 4         | 7         | 3           | (75%)         | 6         |
| Single vehicle                    | 127       | 130       | 147       | -3          | (-2%)         | 135       |
| Other (incl peds)                 | 57        | 71        | 75        | -14         | (-20%)        | 65        |

## Serious injuries: 12 months to October

Due to a change in coding of accident injury severity following the introduction of the new crash data system by Victoria Police, it is not possible to compare serious injury data from 2006 onwards with previous years' data, as a discontinuity in the data series has been introduced with the introduction of a new reporting system on 1 Jan 2006.

| Category        | 2009  | 2008  | 2007  | 2009 v 2008 | 2009 v 2007   | 3 Year Av |
|-----------------|-------|-------|-------|-------------|---------------|-----------|
| <b>Overview</b> |       |       |       |             |               |           |
| Casualties      | 6,463 | 7,429 | 7,747 | -966 (-13%) | -1,284 (-17%) | 7,213     |
| Accidents       | 5,451 | 6,155 | 6,274 | -704 (-11%) | -823 (-13%)   | 5,960     |
| <b>Sex</b>      |       |       |       |             |               |           |
| Male            | 3,791 | 4,418 | 4,385 | -627 (-14%) | -594 (-14%)   | 4,198     |
| Female          | 2,619 | 2,969 | 3,289 | -350 (-12%) | -670 (-20%)   | 2,959     |
| Unknown         | 53    | 42    | 73    | 11 (26%)    | -20 (-27%)    | 56        |
| <b>Roaduser</b> |       |       |       |             |               |           |
| Bicyclist       | 466   | 516   | 487   | -50 (-10%)  | -21 (-4%)     | 490       |
| Driver          | 3,031 | 3,466 | 3,763 | -435 (-13%) | -732 (-19%)   | 3,420     |
| Motorcyclist    | 1,041 | 1,172 | 982   | -131 (-11%) | 59 (6%)       | 1,065     |
| Passenger       | 1,236 | 1,525 | 1,714 | -289 (-19%) | -478 (-28%)   | 1,492     |
| Pedestrian      | 683   | 747   | 800   | -64 (-9%)   | -117 (-15%)   | 743       |
| Unknown         | 6     | 3     | 1     | 3           | 5             | 3         |
| <b>Location</b> |       |       |       |             |               |           |
| Melbourne       | 4,416 | 5,277 | 5,498 | -861 (-16%) | -1,082 (-20%) | 5,064     |
| Rural Victoria  | 1,993 | 2,079 | 2,185 | -86 (-4%)   | -192 (-9%)    | 2,086     |
| Unknown         | 54    | 73    | 64    | -19         | -10           | 64        |
| <b>Agegroup</b> |       |       |       |             |               |           |
| 0-4             | 51    | 62    | 79    | -11 (-18%)  | -28 (-35%)    | 64        |
| 5-15            | 248   | 321   | 385   | -73 (-23%)  | -137 (-36%)   | 318       |
| 16-17           | 191   | 206   | 251   | -15 (-7%)   | -60 (-24%)    | 216       |
| 18-20           | 715   | 855   | 879   | -140 (-16%) | -164 (-19%)   | 816       |
| 21-25           | 840   | 1,014 | 1,103 | -174 (-17%) | -263 (-24%)   | 986       |
| 26-29           | 538   | 629   | 631   | -91 (-14%)  | -93 (-15%)    | 599       |
| 30-39           | 1,098 | 1,328 | 1,300 | -230 (-17%) | -202 (-16%)   | 1,242     |
| 40-49           | 999   | 1,003 | 1,087 | -4 (-0%)    | -88 (-8%)     | 1,030     |
| 50-59           | 677   | 772   | 813   | -95 (-12%)  | -136 (-17%)   | 754       |
| 60-69           | 442   | 540   | 494   | -98 (-18%)  | -52 (-11%)    | 492       |
| 70+             | 572   | 602   | 573   | -30 (-5%)   | -1 (-0%)      | 582       |
| Unknown         | 92    | 97    | 152   | -5 (-5%)    | -60 (-39%)    | 114       |
| <b>Alctime</b>  |       |       |       |             |               |           |
| High (Melb)     | 2,143 | 2,452 | 2,588 | -309 (-13%) | -445 (-17%)   | 2,394     |
| High (Rural)    | 909   | 963   | 965   | -54 (-6%)   | -56 (-6%)     | 946       |
| High (Vic)      | 3,052 | 3,415 | 3,553 | -363 (-11%) | -501 (-14%)   | 3,340     |
| Low (Melb)      | 2,273 | 2,825 | 2,910 | -552 (-20%) | -637 (-22%)   | 2,669     |
| Low (Rural)     | 1,084 | 1,116 | 1,220 | -32 (-3%)   | -136 (-11%)   | 1,140     |
| Low (Vic)       | 3,357 | 3,941 | 4,130 | -584 (-15%) | -773 (-19%)   | 3,809     |
| Unknown         | 54    | 73    | 64    | -19         | -10           | 64        |

## Serious injuries: 12 months to October

Due to a change in coding of accident injury severity following the introduction of the new crash data system by Victoria Police, it is not possible to compare serious injury data from 2006 onwards with previous years' data, as a discontinuity in the data series has been introduced with the introduction of a new reporting system on 1 Jan 2006.

| Category                          | 2009         | 2008         | 2007         | 2009 v 2008 | 2009 v 2007   | 3 Year Av    |
|-----------------------------------|--------------|--------------|--------------|-------------|---------------|--------------|
| <b>Police Region and Division</b> |              |              |              |             |               |              |
| <b>Region 1</b>                   | <b>1,017</b> | <b>1,340</b> | <b>1,228</b> | <b>-323</b> | <b>(-24%)</b> | <b>1,195</b> |
| 1-1 Melbourne                     | 318          | 403          | 360          | -85         | (-21%)        | 360          |
| 1-2 Prahran                       | 210          | 266          | 260          | -56         | (-21%)        | 245          |
| 1-3 Caulfield                     | 259          | 329          | 306          | -70         | (-21%)        | 298          |
| 1-4 Moorabbin                     | 230          | 342          | 302          | -112        | (-33%)        | 291          |
| <b>Region 2</b>                   | <b>1,395</b> | <b>1,503</b> | <b>1,562</b> | <b>-108</b> | <b>(-7%)</b>  | <b>1,487</b> |
| 2-1 Altona North                  | 522          | 584          | 548          | -62         | (-11%)        | 551          |
| 2-2 Geelong                       | 422          | 430          | 458          | -8          | (-2%)         | 437          |
| 2-3 Ballarat                      | 258          | 235          | 321          | 23          | (10%)         | 271          |
| 2-4 Horsham                       | 67           | 91           | 88           | -24         | (-26%)        | 82           |
| 2-5 Warrnambool                   | 126          | 163          | 147          | -37         | (-23%)        | 145          |
| <b>Region 3</b>                   | <b>1,296</b> | <b>1,340</b> | <b>1,379</b> | <b>-44</b>  | <b>(-3%)</b>  | <b>1,338</b> |
| 3-1 Mill Park                     | 257          | 242          | 354          | 15          | (6%)          | 284          |
| 3-2 Broadmeadows                  | 502          | 499          | 500          | 3           | (1%)          | 500          |
| 3-3 Bendigo                       | 210          | 257          | 179          | -47         | (-18%)        | 215          |
| 3-4 Shepparton                    | 207          | 204          | 195          | 3           | (1%)          | 202          |
| 3-5 Mildura                       | 120          | 138          | 151          | -18         | (-13%)        | 136          |
| <b>Region 4</b>                   | <b>1,452</b> | <b>1,588</b> | <b>1,823</b> | <b>-136</b> | <b>(-9%)</b>  | <b>1,621</b> |
| 4-1 Rosanna                       | 210          | 203          | 268          | 7           | (3%)          | 227          |
| 4-2 Nunawading                    | 490          | 554          | 667          | -64         | (-12%)        | 570          |
| 4-3 Knox                          | 399          | 519          | 541          | -120        | (-23%)        | 486          |
| 4-4 Seymour                       | 189          | 166          | 196          | 23          | (14%)         | 184          |
| 4-5 Wangaratta                    | 164          | 146          | 151          | 18          | (12%)         | 154          |
| <b>Region 5</b>                   | <b>1,249</b> | <b>1,585</b> | <b>1,691</b> | <b>-336</b> | <b>(-21%)</b> | <b>1,508</b> |
| 5-1 Frankston                     | 313          | 428          | 388          | -115        | (-27%)        | 376          |
| 5-2 Dandenong                     | 564          | 742          | 837          | -178        | (-24%)        | 714          |
| 5-3 Morwell                       | 216          | 257          | 321          | -41         | (-16%)        | 265          |
| 5-4 Bairnsdale                    | 156          | 158          | 145          | -2          | (-1%)         | 153          |
| Unknown                           | 54           | 73           | 64           | -19         |               | 64           |
| <b>Accident Type</b>              |              |              |              |             |               |              |
| <b>Intersection</b>               |              |              |              |             |               |              |
| Adjacent direction                | 952          | 1,079        | 1,270        | -127        | (-12%)        | 1,100        |
| Opposing direction                | 576          | 761          | 739          | -185        | (-24%)        | 692          |
| <b>Other</b>                      |              |              |              |             |               |              |
| Head on                           | 380          | 429          | 474          | -49         | (-11%)        | 428          |
| Same direction                    | 941          | 1,048        | 1,221        | -107        | (-10%)        | 1,070        |
| Manoeuvre/o'taking                | 409          | 460          | 464          | -51         | (-11%)        | 444          |
| On path                           | 311          | 359          | 351          | -48         | (-13%)        | 340          |
| Single vehicle                    | 2,137        | 2,463        | 2,356        | -326        | (-13%)        | 2,319        |
| Other (incl peds)                 | 757          | 830          | 872          | -73         | (-9%)         | 820          |

## Victorian Road Deaths: monthly totals since 1951

| Year       | Jan       | Feb       | Mar        | Apr        | May       | Jun       | Jul        | Aug        | Sep       | Oct       | Nov       | Dec        | Totals       |
|------------|-----------|-----------|------------|------------|-----------|-----------|------------|------------|-----------|-----------|-----------|------------|--------------|
| 1951       |           |           |            |            |           |           | 61         | 59         | 52        | 38        | 29        | 41         |              |
| 1952       | 45        | 40        | 54         | 61         | 54        | 69        | 67         | 55         | 44        | 44        | 31        | 20         | 584          |
| 1953       | 23        | 28        | 54         | 58         | 49        | 42        | 50         | 37         | 44        | 27        | 36        | 32         | 480          |
| 1954       | 44        | 42        | 28         | 60         | 55        | 36        | 63         | 33         | 25        | 52        | 30        | 41         | 509          |
| 1955       | 44        | 36        | 45         | 55         | 48        | 56        | 64         | 44         | 44        | 32        | 40        | 40         | 548          |
| 1956       | 34        | 48        | 51         | 67         | 53        | 65        | 71         | 47         | 39        | 39        | 44        | 48         | 606          |
| 1957       | 50        | 41        | 46         | 58         | 52        | 54        | 57         | 53         | 51        | 46        | 32        | 49         | 589          |
| 1958       | 50        | 38        | 42         | 58         | 54        | 41        | 54         | 53         | 57        | 40        | 57        | 52         | 596          |
| 1959       | 50        | 57        | 61         | 50         | 75        | 55        | 42         | 48         | 52        | 55        | 63        | 63         | 671          |
| 1960       | 49        | 53        | 57         | 76         | 70        | 70        | 67         | 62         | 61        | 77        | 52        | 66         | 760          |
| 1961       | 63        | 57        | 68         | 74         | 58        | 68        | 78         | 82         | 59        | 62        | 60        | 65         | 794          |
| 1962       | 65        | 41        | 76         | 78         | 72        | 80        | 70         | 77         | 62        | 53        | 64        | 70         | 808          |
| 1963       | 67        | 56        | 65         | 85         | 66        | 68        | 77         | 55         | 55        | 58        | 61        | 67         | 780          |
| 1964       | 73        | 71        | 78         | 71         | 83        | 89        | 80         | 89         | 67        | 66        | 62        | 75         | 904          |
| 1965       | 63        | 64        | 86         | 88         | 80        | 87        | 79         | 69         | 81        | 77        | 68        | 87         | 929          |
| 1966       | 75        | 59        | 75         | 103        | 74        | 86        | 87         | 80         | 75        | 66        | 90        | 85         | 955          |
| 1967       | 61        | 79        | 91         | 97         | 81        | 71        | 59         | 67         | 70        | 68        | 60        | 83         | 887          |
| 1968       | 70        | 78        | 86         | 78         | 73        | 76        | 73         | 77         | 72        | 80        | 81        | 105        | 949          |
| 1969       | 79        | 68        | 79         | 87         | 86        | 77        | 87         | 83         | 87        | 83        | 94        | 101        | 1,011        |
| 1970       | 85        | 84        | 106        | 80         | 87        | 88        | 110        | 106        | 78        | 95        | 68        | 74         | 1,061        |
| 1971       | 83        | 75        | 77         | 68         | 76        | 86        | 85         | 72         | 78        | 73        | 74        | 76         | 923          |
| 1972       | 61        | 62        | 75         | 82         | 75        | 71        | 98         | 85         | 83        | 62        | 80        | 81         | 915          |
| 1973       | 75        | 75        | 95         | 85         | 64        | 66        | 61         | 85         | 89        | 88        | 66        | 86         | 935          |
| 1974       | 56        | 62        | 81         | 60         | 70        | 73        | 67         | 62         | 53        | 70        | 80        | 72         | 806          |
| 1975       | 67        | 65        | 87         | 73         | 97        | 94        | 57         | 75         | 69        | 66        | 71        | 89         | 910          |
| 1976       | 79        | 78        | 88         | 78         | 69        | 79        | 60         | 70         | 82        | 78        | 77        | 100        | 938          |
| 1977       | 65        | 71        | 89         | 79         | 65        | 79        | 70         | 91         | 68        | 74        | 96        | 107        | 954          |
| 1978       | 75        | 54        | 95         | 63         | 64        | 69        | 68         | 77         | 65        | 84        | 83        | 72         | 869          |
| 1979       | 63        | 60        | 86         | 75         | 45        | 64        | 66         | 75         | 69        | 79        | 72        | 93         | 847          |
| 1980       | 48        | 55        | 66         | 59         | 47        | 56        | 60         | 53         | 45        | 58        | 61        | 49         | 657          |
| 1981       | 69        | 60        | 58         | 61         | 74        | 65        | 61         | 63         | 68        | 71        | 59        | 57         | 766          |
| 1982       | 55        | 53        | 59         | 59         | 67        | 45        | 47         | 71         | 53        | 69        | 65        | 66         | 709          |
| 1983       | 42        | 59        | 53         | 63         | 62        | 61        | 65         | 51         | 59        | 43        | 54        | 52         | 664          |
| 1984       | 65        | 48        | 58         | 50         | 56        | 48        | 46         | 50         | 71        | 53        | 55        | 58         | 658          |
| 1985       | 56        | 47        | 50         | 65         | 75        | 50        | 51         | 50         | 58        | 61        | 56        | 64         | 683          |
| 1986       | 56        | 50        | 70         | 69         | 59        | 53        | 42         | 54         | 54        | 52        | 59        | 51         | 669          |
| 1987       | 62        | 43        | 57         | 52         | 63        | 59        | 62         | 49         | 62        | 61        | 55        | 80         | 705          |
| 1988       | 49        | 58        | 69         | 54         | 79        | 50        | 54         | 52         | 64        | 59        | 43        | 70         | 701          |
| 1989       | 76        | 65        | 80         | 59         | 67        | 73        | 52         | 65         | 82        | 50        | 41        | 66         | 776          |
| 1990       | 48        | 44        | 55         | 39         | 56        | 64        | 41         | 34         | 48        | 35        | 40        | 44         | 548          |
| 1991       | 45        | 39        | 70         | 30         | 34        | 29        | 44         | 47         | 41        | 36        | 35        | 53         | 503          |
| 1992       | 34        | 33        | 34         | 47         | 33        | 29        | 23         | 27         | 28        | 38        | 30        | 40         | 396          |
| 1993       | 27        | 40        | 37         | 39         | 44        | 33        | 33         | 27         | 34        | 39        | 43        | 40         | 436          |
| 1994       | 36        | 31        | 44         | 35         | 27        | 33        | 29         | 37         | 17        | 27        | 32        | 30         | 378          |
| 1995       | 38        | 35        | 26         | 33         | 34        | 41        | 27         | 34         | 34        | 32        | 38        | 46         | 418          |
| 1996       | 40        | 47        | 35         | 38         | 28        | 29        | 30         | 35         | 49        | 24        | 33        | 30         | 418          |
| 1997       | 36        | 25        | 30         | 30         | 40        | 22        | 39         | 26         | 26        | 29        | 39        | 35         | 377          |
| 1998       | 29        | 29        | 32         | 36         | 31        | 22        | 40         | 19         | 37        | 36        | 49        | 30         | 390          |
| 1999       | 32        | 31        | 35         | 35         | 34        | 24        | 35         | 26         | 28        | 38        | 29        | 37         | 384          |
| 2000       | 32        | 26        | 46         | 32         | 39        | 32        | 33         | 29         | 36        | 29        | 44        | 29         | 407          |
| 2001       | 44        | 30        | 31         | 32         | 31        | 41        | 34         | 37         | 35        | 51        | 41        | 37         | 444          |
| 2002       | 32        | 31        | 45         | 31         | 45        | 32        | 27         | 25         | 31        | 30        | 31        | 37         | 397          |
| 2003       | 21        | 41        | 36         | 28         | 31        | 28        | 20         | 23         | 23        | 24        | 24        | 31         | 330          |
| 2004       | 32        | 22        | 30         | 30         | 46        | 28        | 27         | 26         | 22        | 28        | 25        | 27         | 343          |
| 2005       | 33        | 27        | 47         | 21         | 29        | 23        | 30         | 25         | 25        | 33        | 17        | 36         | 346          |
| 2006       | 24        | 37        | 23         | 23         | 27        | 23        | 25         | 22         | 43        | 20        | 31        | 39         | 337          |
| 2007       | 23        | 23        | 32         | 25         | 26        | 28        | 28         | 20         | 23        | 37        | 26        | 41         | 332          |
| 2008       | 28        | 20        | 37         | 25         | 25        | 20        | 27         | 27         | 18        | 25        | 26        | 25         | 303          |
| 2009       | 31        | 18        | 23         | 32         | 19        | 30        | 19         | 21         | 14        | 28        | 21        | 34         | 290          |
| 2010       | 26        | 26        | 29         | 23         |           |           |            |            |           |           |           |            | 104          |
| <b>Ave</b> | <b>51</b> | <b>48</b> | <b>58</b>  | <b>56</b>  | <b>56</b> | <b>54</b> | <b>54</b>  | <b>52</b>  | <b>52</b> | <b>52</b> | <b>51</b> | <b>57</b>  | <b>643</b>   |
| <b>Max</b> | <b>85</b> | <b>84</b> | <b>106</b> | <b>103</b> | <b>97</b> | <b>94</b> | <b>110</b> | <b>106</b> | <b>89</b> | <b>95</b> | <b>96</b> | <b>107</b> | <b>1,061</b> |
| <b>Min</b> | <b>21</b> | <b>18</b> | <b>23</b>  | <b>21</b>  | <b>19</b> | <b>20</b> | <b>19</b>  | <b>19</b>  | <b>14</b> | <b>20</b> | <b>17</b> | <b>20</b>  | <b>303</b>   |



## Fatalities by Week (2005 to 2010)

| Week Ending  | 2005       | 2006       | 2007       | 2008       | 2009       | 2010       | Cumulative 2009 | % Change 2009-2008 | 12 Month Moving Total |
|--------------|------------|------------|------------|------------|------------|------------|-----------------|--------------------|-----------------------|
| 3-Jan        | 4          | 4          | 3          | 3          | 3          | 1          | 1               | -67%               | 288                   |
| 10-Jan       | 6          | 2          | 2          | 6          | 11         | 7          | 8               | -43%               | 284                   |
| 17-Jan       | 3          | 4          | 7          | 7          | 6          | 5          | 13              | -35%               | 283                   |
| 24-Jan       | 13         | 11         | 5          | 2          | 2          | 4          | 17              | -23%               | 285                   |
| 31-Jan       | 7          | 3          | 6          | 10         | 9          | 9          | 26              | -16%               | 285                   |
| 7-Feb        | 6          | 5          | 6          | 3          | 4          | 8          | 34              | -3%                | 289                   |
| 14-Feb       | 3          | 6          | 4          | 4          | 8          | 4          | 38              | -12%               | 285                   |
| 21-Feb       | 7          | 17         | 12         | 4          | 2          | 10         | 48              | 7%                 | 293                   |
| 28-Feb       | 11         | 9          | 1          | 9          | 4          | 4          | 52              | 6%                 | 293                   |
| 7-Mar        | 6          | 2          | 13         | 8          | 2          | 5          | 57              | 12%                | 296                   |
| 14-Mar       | 5          | 6          | 5          | 8          | 7          | 7          | 64              | 10%                | 296                   |
| 21-Mar       | 15         | 3          | 3          | 9          | 2          | 4          | 68              | 13%                | 298                   |
| 28-Mar       | 14         | 10         | 9          | 9          | 8          | 12         | 80              | 18%                | 302                   |
| 4-Apr        | 9          | 3          | 4          | 8          | 7          | 4          | 84              | 12%                | 299                   |
| 11-Apr       | 3          | 4          | 10         | 4          | 6          | 7          | 91              | 12%                | 300                   |
| 18-Apr       | 7          | 3          | 5          | 5          | 8          | 8          | 99              | 11%                | 300                   |
| 25-Apr       | 5          | 6          | 4          | 8          | 11         | 3          | 102             | 2%                 | 292                   |
| 2-May        | 7          | 9          | 6          | 6          | 4          | 3          | 105             | 1%                 | 291                   |
| 9-May        | 6          | 11         | 4          | 4          | 7          | 5          | 110             | -1%                | 289                   |
| 16-May       | 12         | 3          | 7          | 7          | 3          | 10         | 120             | 5%                 | 296                   |
| 23-May       | 5          | 6          | 5          | 5          | 1          | 7          | 127             | 10%                | 302                   |
| 30-May       | 3          | 7          | 7          | 6          | 4          |            |                 |                    |                       |
| 6-Jun        | 2          | 6          | 15         | 3          | 6          |            |                 |                    |                       |
| 13-Jun       | 8          | 4          | 2          | 5          | 7          |            |                 |                    |                       |
| 20-Jun       | 8          | 7          | 4          | 5          | 8          |            |                 |                    |                       |
| 27-Jun       | 3          | 5          | 7          | 6          | 6          |            |                 |                    |                       |
| 4-Jul        | 8          | 1          | 3          | 5          | 8          |            |                 |                    |                       |
| 11-Jul       | 6          | 8          | 10         | 10         | 7          |            |                 |                    |                       |
| 18-Jul       | 6          | 7          | 6          | 2          | 2          |            |                 |                    |                       |
| 25-Jul       | 7          | 6          | 5          | 4          | 7          |            |                 |                    |                       |
| 1-Aug        | 7          | 4          | 5          | 9          | 3          |            |                 |                    |                       |
| 8-Aug        | 7          | 7          | 2          | 6          | 5          |            |                 |                    |                       |
| 15-Aug       | 6          | 5          | 2          | 6          | 7          |            |                 |                    |                       |
| 22-Aug       | 2          | 4          | 7          | 5          | 4          |            |                 |                    |                       |
| 29-Aug       | 7          | 5          | 9          | 6          | 1          |            |                 |                    |                       |
| 5-Sep        | 3          | 2          | 2          | 4          | 4          |            |                 |                    |                       |
| 12-Sep       | 4          | 8          | 7          | 5          | 2          |            |                 |                    |                       |
| 19-Sep       | 4          | 11         | 5          | 5          | 6          |            |                 |                    |                       |
| 26-Sep       | 13         | 18         | 8          | 5          | 2          |            |                 |                    |                       |
| 3-Oct        | 7          | 5          | 4          | 9          | 2          |            |                 |                    |                       |
| 10-Oct       | 6          | 9          | 12         | 5          | 6          |            |                 |                    |                       |
| 17-Oct       | 11         | 5          | 6          | 4          | 7          |            |                 |                    |                       |
| 24-Oct       | 4          | 4          | 11         | 5          | 7          |            |                 |                    |                       |
| 31-Oct       | 7          | 2          | 5          | 3          | 9          |            |                 |                    |                       |
| 7-Nov        | 6          | 9          | 5          | 4          | 4          |            |                 |                    |                       |
| 14-Nov       | 6          | 3          | 8          | 7          | 8          |            |                 |                    |                       |
| 21-Nov       | 2          | 10         | 4          | 10         | 5          |            |                 |                    |                       |
| 28-Nov       | 3          | 7          | 7          | 3          | 3          |            |                 |                    |                       |
| 5-Dec        | 7          | 16         | 6          | 4          | 6          |            |                 |                    |                       |
| 12-Dec       | 6          | 3          | 16         | 9          | 4          |            |                 |                    |                       |
| 19-Dec       | 5          | 7          | 5          | 4          | 11         |            |                 |                    |                       |
| 26-Dec       | 13         | 11         | 10         | 9          | 10         |            |                 |                    |                       |
| 31-Dec       | 5          | 4          | 6          | 1          | 4          |            |                 |                    |                       |
| <b>Total</b> | <b>346</b> | <b>337</b> | <b>332</b> | <b>303</b> | <b>290</b> | <b>127</b> |                 |                    |                       |

## Alcohol Related Deaths

### BAC Fatalities (12 months to February 2010)

- 24% of killed and tested drivers and riders had a BAC at 0.05 g/100ml or over (40 of 167) compared to 28% over the previous 12 month period (51 of 183).
- In Melbourne, 20 drivers/riders killed and tested were at or over 0.05, with 45% of these having a BAC in excess of 0.15 g/100ml. Across rural Victoria, 20 drivers/riders killed and tested were at or over 0.05, with 55% of these having a BAC over 0.15.
- Of the 40 drivers and riders killed and tested at or over 0.05, 18% (7) were aged under 21, 35% (14) were aged 21-29, 23% (9) were aged 30-39 and 25% (10) were aged 40 years and over. In the previous year (51 killed) the corresponding figures were 18% (9), 29% (15), 18% (9) and 35% (18), respectively.

| Category                                  | 2010  | 2009  | 2008  | 2010 v 2009 | 2010 v 2008 | 5 Year Av |
|-------------------------------------------|-------|-------|-------|-------------|-------------|-----------|
| <b>Melbourne Drivers and Riders</b>       |       |       |       |             |             |           |
| <0.05                                     | 53    | 69    | 63    | -16         | (-23%)      | 64        |
| [a] at 0.05 & above                       | 20    | 22    | 27    | -2          | (-9%)       | 22        |
| % at 0.05 & above                         | (27%) | (24%) | (30%) |             |             | (25%)     |
| [b] >0.15                                 | 9     | 13    | 11    | -4          | (-31%)      | 10        |
| %>0.15                                    | (12%) | (14%) | (12%) |             |             | (12%)     |
| [b] as a % of [a]                         | (45%) | (59%) | (41%) |             |             | (45%)     |
| BAC Unknown                               | 5     | 2     | 3     | 3           | (150%)      | 2         |
| <b>Country Drivers and Riders</b>         |       |       |       |             |             |           |
| <0.05                                     | 74    | 63    | 89    | 11          | (17%)       | 77        |
| [a] at 0.05 & above                       | 20    | 29    | 30    | -9          | (-31%)      | 28        |
| % at 0.05 & above                         | (21%) | (32%) | (25%) |             |             | (26%)     |
| [b] >0.15                                 | 11    | 20    | 18    | -9          | (-45%)      | 18        |
| %>0.15                                    | (12%) | (22%) | (15%) |             |             | (17%)     |
| [b] as a % of [a]                         | (55%) | (69%) | (60%) |             |             | (64%)     |
| BAC Unknown                               | 7     | 2     | 2     | 5           | (250%)      | 5         |
| <b>Victorian Total Drivers and Riders</b> |       |       |       |             |             |           |
| <0.05                                     | 127   | 132   | 152   | -5          | (-4%)       | 141       |
| [a] at 0.05 & above                       | 40    | 51    | 57    | -11         | (-22%)      | 49        |
| % at 0.05 & above                         | (24%) | (28%) | (27%) |             |             | (26%)     |
| [b] >0.15                                 | 20    | 33    | 29    | -13         | (-39%)      | 27        |
| %>0.15                                    | (12%) | (18%) | (14%) |             |             | (14%)     |
| [b] as a % of [a]                         | (50%) | (65%) | (51%) |             |             | (56%)     |
| BAC Unknown                               | 12    | 4     | 5     | 8           | (200%)      | 7         |
| <b>Victorian Total Pedestrians</b>        |       |       |       |             |             |           |
| <0.05                                     | 32    | 37    | 35    | -5          | (-14%)      | 33        |
| [a] at 0.05 & above                       | 10    | 17    | 9     | -7          | (-41%)      | 14        |
| % at 0.05 & above                         | (24%) | (31%) | (20%) |             |             | (30%)     |
| [b] >0.15                                 | 3     | 10    | 8     | -7          | (-70%)      | 9         |
| %>0.15                                    | (7%)  | (19%) | (18%) |             |             | (19%)     |
| [b] as a % of [a]                         | (30%) | (59%) | (89%) |             |             | (63%)     |
| BAC Unknown                               | 7     | 3     | 2     | 4           | (133%)      | 5         |

## The National Picture

| State          | Killed (12 months to April) |       |       |       |     | 2010 v 2009 |
|----------------|-----------------------------|-------|-------|-------|-----|-------------|
|                | 2010                        | 2009  | 2008  | 2007  |     |             |
| NSW            | 457                         | 417   | 394   | 451   | 40  | (10%)       |
| VIC            | 290                         | 297   | 339   | 333   | -7  | (-2%)       |
| QLD            | 283                         | 342   | 354   | 348   | -59 | (-17%)      |
| SA             | 127                         | 110   | 110   | 119   | 17  | (15%)       |
| WA             | 181                         | 209   | 214   | 225   | -28 | (-13%)      |
| TAS            | 48                          | 49    | 38    | 65    | -1  | (-2%)       |
| NT             | 35                          | 66    | 61    | 45    | -31 | (-47%)      |
| ACT            | 19                          | 15    | 12    | 16    | 4   | (27%)       |
| AUST TOTAL     | 1,440                       | 1,505 | 1,522 | 1,602 | -65 | (-4%)       |
| AUST minus VIC | 1,150                       | 1,208 | 1,183 | 1,269 | -58 | (-5%)       |

| State          | Deaths per 10,000 registered vehicles<br>(12 months to April) |      |      | Deaths per 100,000 population<br>(12 months to April) |       |       |
|----------------|---------------------------------------------------------------|------|------|-------------------------------------------------------|-------|-------|
|                | 2010                                                          | 2009 | 2008 | 2010                                                  | 2009  | 2008  |
| NSW            | 0.99                                                          | 0.92 | 0.88 | 6.40                                                  | 5.95  | 5.70  |
| VIC            | 0.71                                                          | 0.75 | 0.87 | 5.30                                                  | 5.56  | 6.47  |
| QLD            | 0.85                                                          | 1.06 | 1.14 | 6.36                                                  | 7.91  | 8.40  |
| SA             | 1.04                                                          | 0.92 | 0.94 | 7.79                                                  | 6.84  | 6.92  |
| WA             | 0.96                                                          | 1.16 | 1.25 | 8.00                                                  | 9.55  | 10.07 |
| TAS            | 1.18                                                          | 1.24 | 0.98 | 9.52                                                  | 9.81  | 7.68  |
| NT             | 2.65                                                          | 5.22 | 5.04 | 15.45                                                 | 29.79 | 28.16 |
| ACT            | 0.76                                                          | 0.61 | 0.51 | 5.37                                                  | 4.33  | 3.52  |
| AUST TOTAL     | 0.91                                                          | 0.97 | 1.01 | 6.53                                                  | 6.99  | 7.20  |
| AUST minus VIC | 0.97                                                          | 1.05 | 1.06 | 6.94                                                  | 7.46  | 7.44  |

## Victoria v Australia – 12 Month Moving Fatality Rate



## Booze-Bus Random Breath Testing

12 months to April 2010 (monthly totals)

|           | 2009    |         |         |         |         |         |        |         | 2010    |         |         |         |
|-----------|---------|---------|---------|---------|---------|---------|--------|---------|---------|---------|---------|---------|
|           | May     | Jun     | Jul     | Aug     | Sep     | Oct     | Nov    | Dec     | Jan     | Feb     | Mar     | Apr     |
| Melbourne | 112,001 | 90,202  | 91,302  | 90,377  | 91,393  | 90,050  | 77,312 | 83,002  | 99,374  | 88,214  | 88,492  | 100,588 |
| Country   | 21,274  | 16,400  | 18,425  | 19,281  | 18,070  | 18,227  | 13,035 | 26,331  | 23,837  | 17,657  | 13,776  | 20,869  |
| Vic Total | 133,275 | 106,602 | 109,727 | 109,658 | 109,463 | 108,277 | 90,347 | 109,333 | 123,211 | 105,871 | 102,268 | 121,457 |

12 months to April vs previous 12 months

|           | 2010      | 2009      | 2008      | 2010 v 2009 | 2010 v 2008    |
|-----------|-----------|-----------|-----------|-------------|----------------|
| Melbourne | 1,102,307 | 1,071,437 | 1,045,388 | 30,870 (3%) | 56,919 (5%)    |
| Country   | 227,182   | 222,369   | 251,362   | 4,813 (2%)  | -24,180 (-10%) |
| Vic Total | 1,329,489 | 1,293,806 | 1,296,750 | 35,683 (3%) | 32,739 (3%)    |

## Mobile Safety Camera Data

Speed Infringements Issued from Mobile Cameras (monthly totals)

Monthly Average = 49,102

|  | 2009   |        |        |        |        |        |        |        | 2010   |        |        |        |
|--|--------|--------|--------|--------|--------|--------|--------|--------|--------|--------|--------|--------|
|  | May    | Jun    | Jul    | Aug    | Sep    | Oct    | Nov    | Dec    | Jan    | Feb    | Mar    | Apr    |
|  | 37,758 | 46,126 | 50,428 | 41,211 | 48,564 | 57,619 | 41,750 | 52,024 | 51,439 | 54,548 | 54,283 | 53,468 |

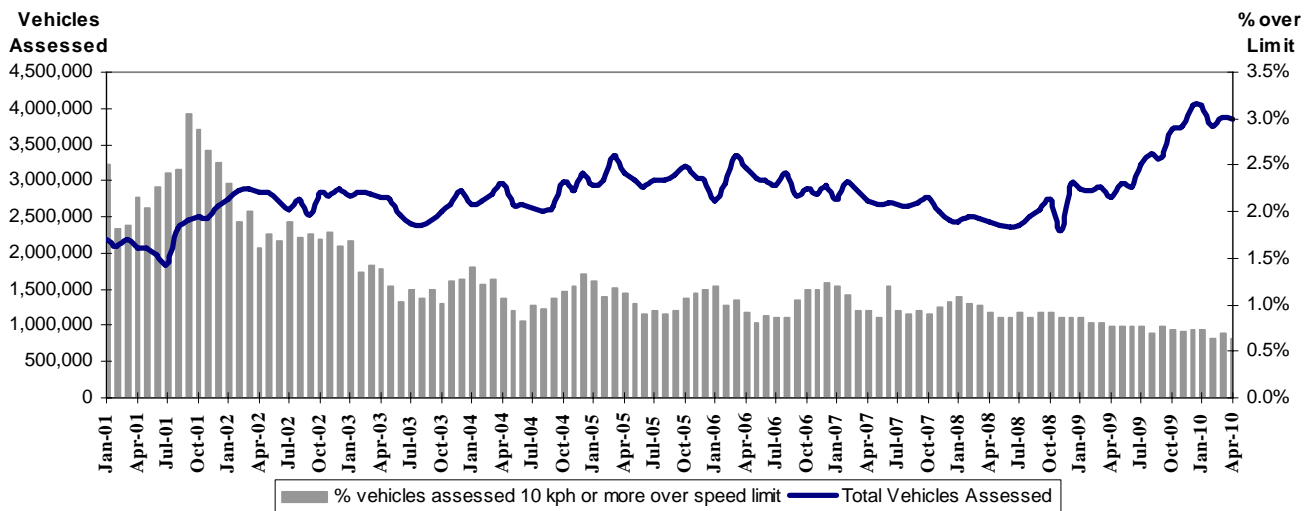
Excessive Speed Infringements Issued from Mobile Cameras (monthly totals)

Monthly Average = 367

|  | 2009 |     |     |     |     |     |     |     | 2010 |     |     |     |
|--|------|-----|-----|-----|-----|-----|-----|-----|------|-----|-----|-----|
|  | May  | Jun | Jul | Aug | Sep | Oct | Nov | Dec | Jan  | Feb | Mar | Apr |
|  | 339  | 394 | 327 | 366 | 346 | 461 | 282 | 352 | 382  | 394 | 360 | 395 |

Note: An ESI is defined as 25km/h over the speed limit except in a 110km/h zone where it is 20km/h over the limit.

Mobile Safety Cameras – Vehicles assessed and percentage of vehicles assessed 10km/h or more over speed limit per month



## Explanations and References

**Hi-Alcetime** is those times of the day and week (*shaded* in the table below) when casualty crashes are **ten times more likely to involve alcohol** than casualty crashes at other (**Lo-Alcetime**) times.

|           | 12am - 6am | 6am - 8am | 8am - 10am | 10am - 2pm | 2pm - 4pm | 4pm - 6pm | 6pm - 12pm |
|-----------|------------|-----------|------------|------------|-----------|-----------|------------|
| Monday    |            |           |            |            |           |           |            |
| Tuesday   |            |           |            |            |           |           |            |
| Wednesday |            |           |            |            |           |           |            |
| Thursday  |            |           |            |            |           |           |            |
| Friday    |            |           |            |            |           |           |            |
| Saturday  |            |           |            |            |           |           |            |
| Sunday    |            |           |            |            |           |           |            |

## Useful Internet Sites

### TAC Sites

- TAC Safety (Road Safety) [www.tacsafety.com.au](http://www.tacsafety.com.au)
- TAC How safe is your car [www.howsafeisyourcar.com.au](http://www.howsafeisyourcar.com.au)
- TAC Learners Log [www.learnerslog.com.au](http://www.learnerslog.com.au)
- TAC Motorcycle Safety Website [www.spokes.com.au](http://www.spokes.com.au)
- TAC Corporate site [www.tac.vic.gov.au](http://www.tac.vic.gov.au)

### Victorian Sites:

- arrive alive [www.vicroads.vic.gov.au](http://www.vicroads.vic.gov.au)
- VicRoads [www.vicroads.vic.gov.au](http://www.vicroads.vic.gov.au)
- Victorian Police [www.police.vic.gov.au](http://www.police.vic.gov.au)
- Parliamentary Road Safety Committee [www.parliament.vic.gov.au/rsc/](http://www.parliament.vic.gov.au/rsc/)
- ARRB Transport Research [www.arrb.com.au](http://www.arrb.com.au)
- RACV [www.racv.com.au](http://www.racv.com.au)
- Monash University Accident Research Centre [www.monash.edu.au/muarc](http://www.monash.edu.au/muarc)
- Roadsafe [www.roadsafe.org.au](http://www.roadsafe.org.au)

### National and Interstate Sites:

- Australian Transport Safety Bureau [www.atsb.gov.au](http://www.atsb.gov.au)
- Roads and Traffic Authority (NSW) [www.rta.nsw.gov.au](http://www.rta.nsw.gov.au)
- Queensland Transport - Road Safety [transport.qld.gov.au/Home/Safety/Road](http://transport.qld.gov.au/Home/Safety/Road)
- Department of Transport (SA) [www.transport.sa.gov.au/index.htm](http://www.transport.sa.gov.au/index.htm)
- Main Roads Western Australia - Road Safety [www.mrwa.wa.gov.au](http://www.mrwa.wa.gov.au)

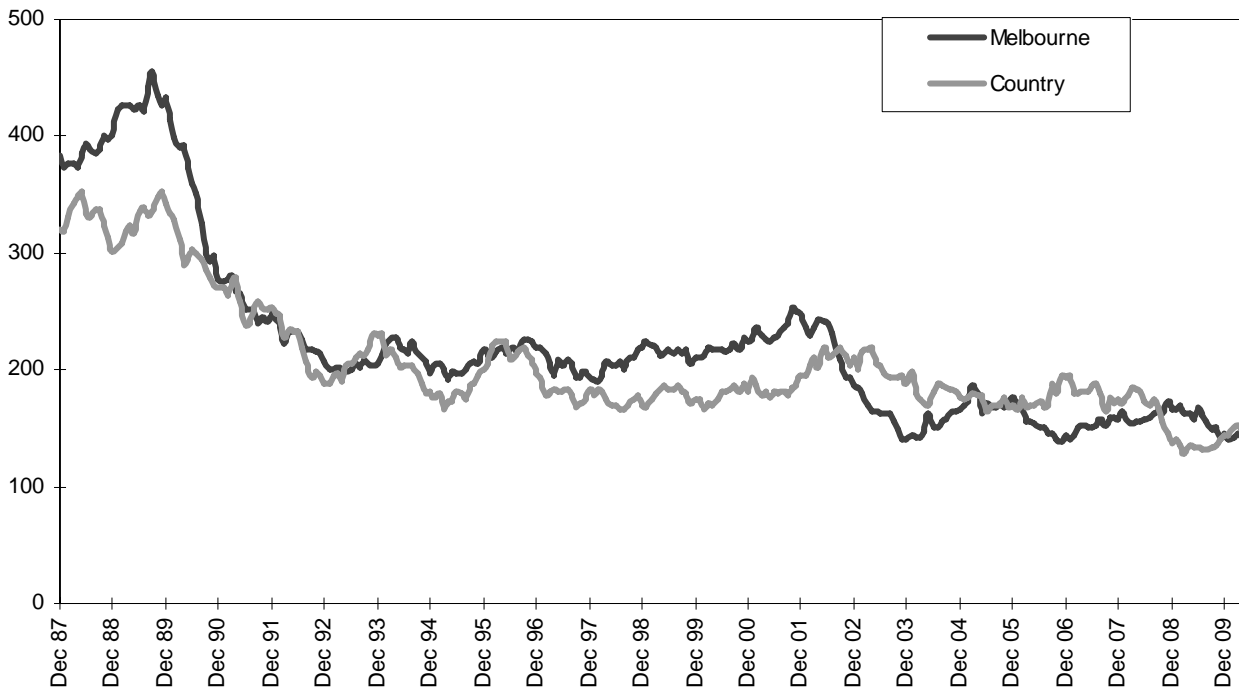
### International Sites:

- National Highway Traffic Safety Admin (USA) [www.nhtsa.dot.gov](http://www.nhtsa.dot.gov)
- Swedish Road and Transport Institute (VTI) [www.vti.se](http://www.vti.se)
- SWOV Institute for Road Safety Research [www.swov.nl](http://www.swov.nl)

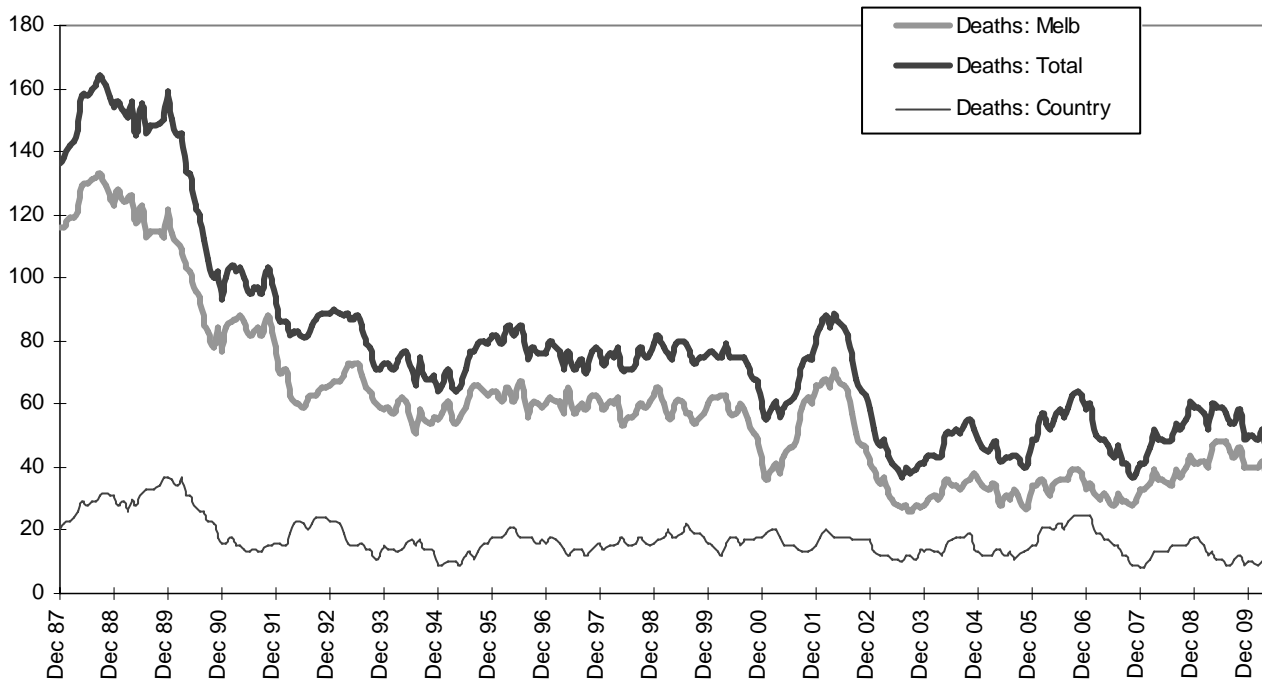
### Related Sites:

- Australian Drug Foundation [www.adf.org.au](http://www.adf.org.au)
- Bicycle Victoria [www.bv.com.au](http://www.bv.com.au)

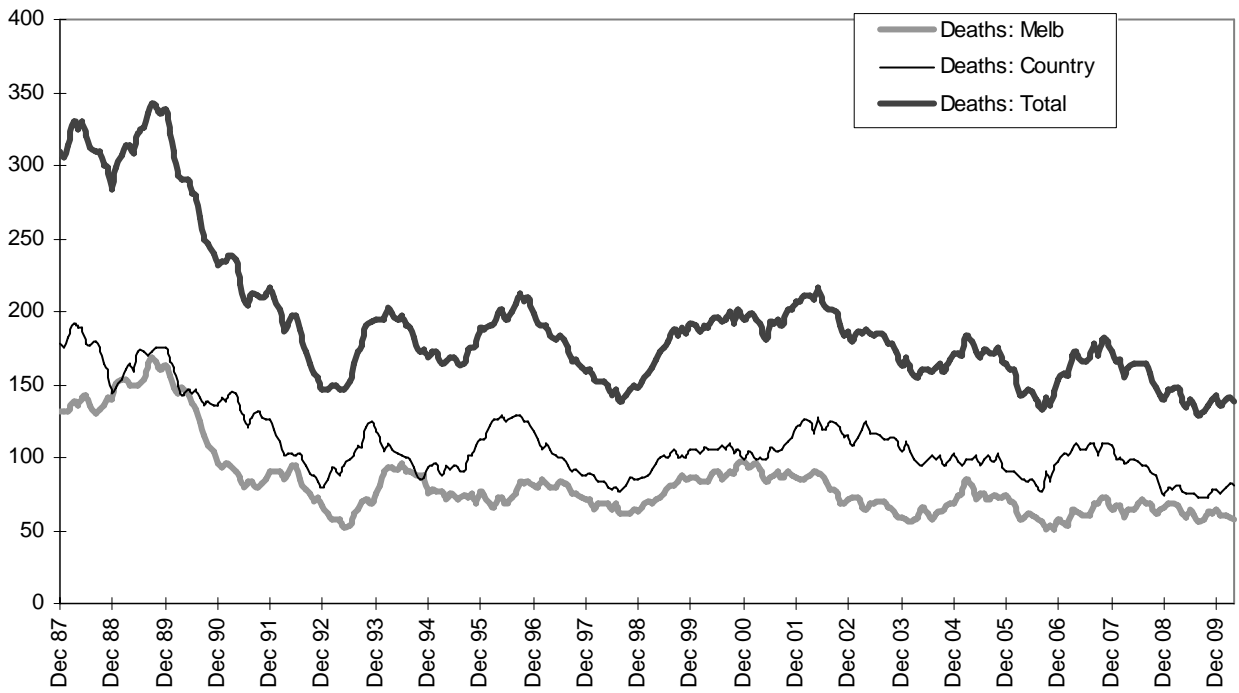
Graph 1 – Melbourne/country fatalities



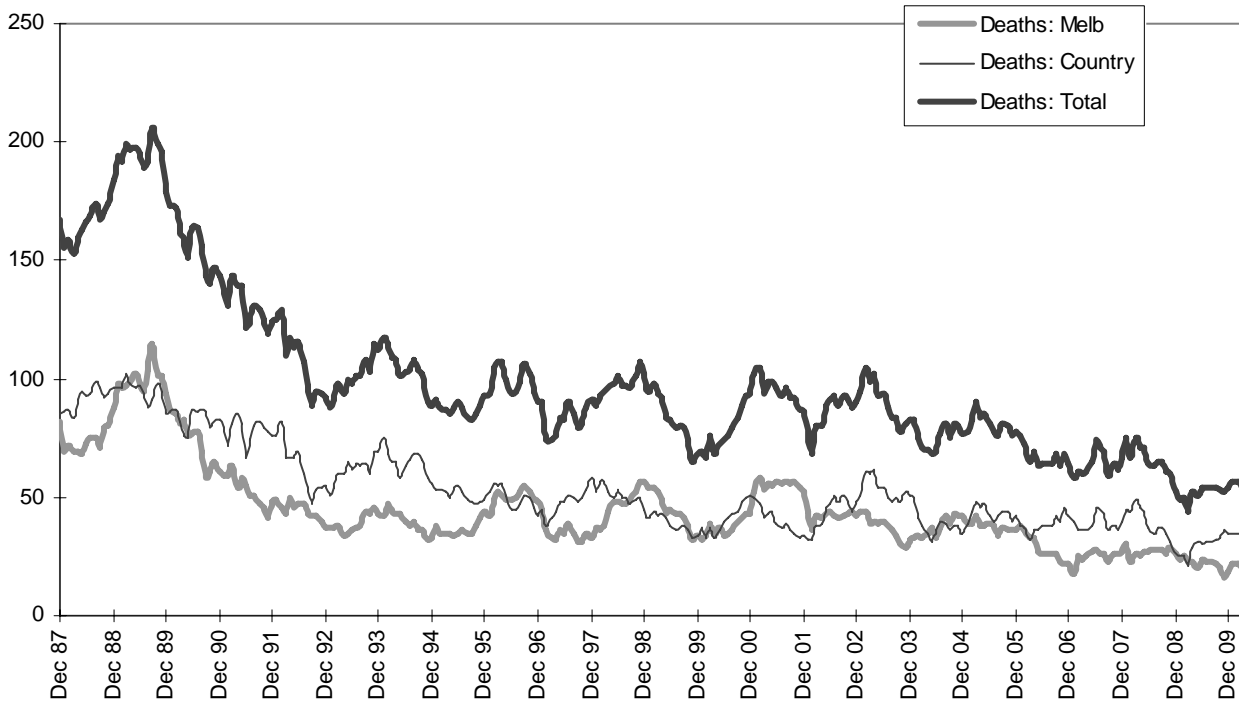
Graph 2a – Pedestrian fatalities (Melbourne/country)



Graph 2b – Driver fatalities (Melbourne/country)



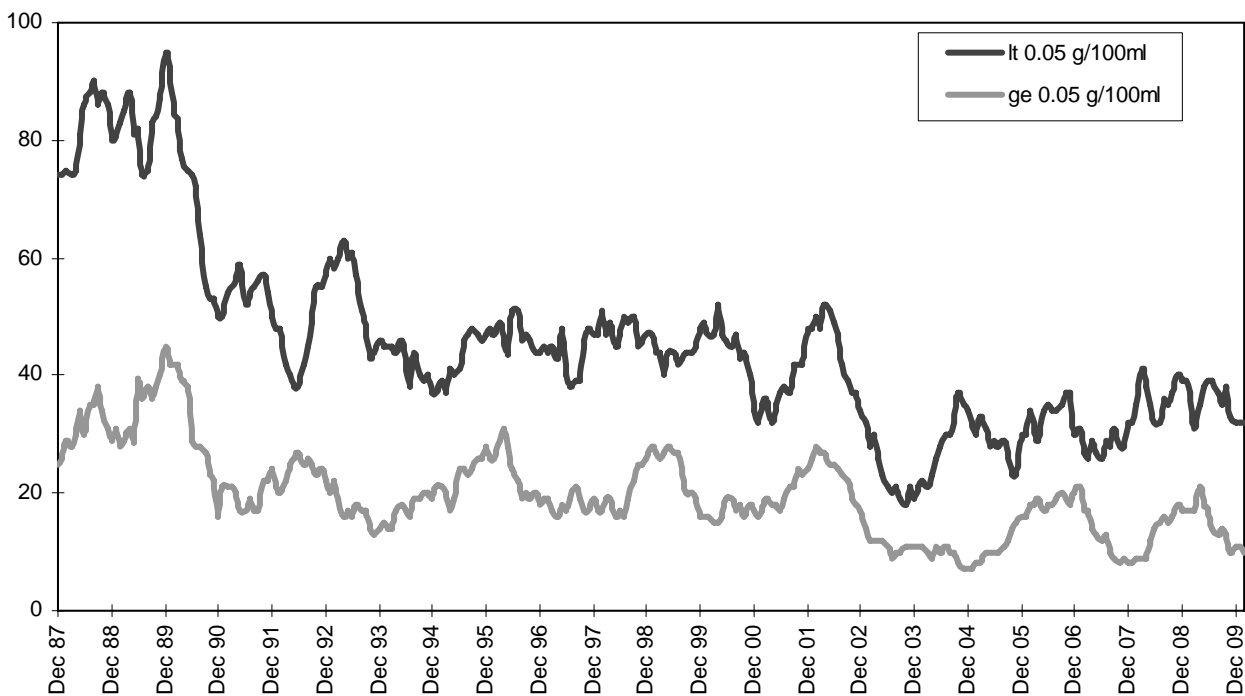
Graph 2c – Passenger fatalities (Melbourne/country)



Graph 2d –Motorcyclist fatalities (Melbourne/country)

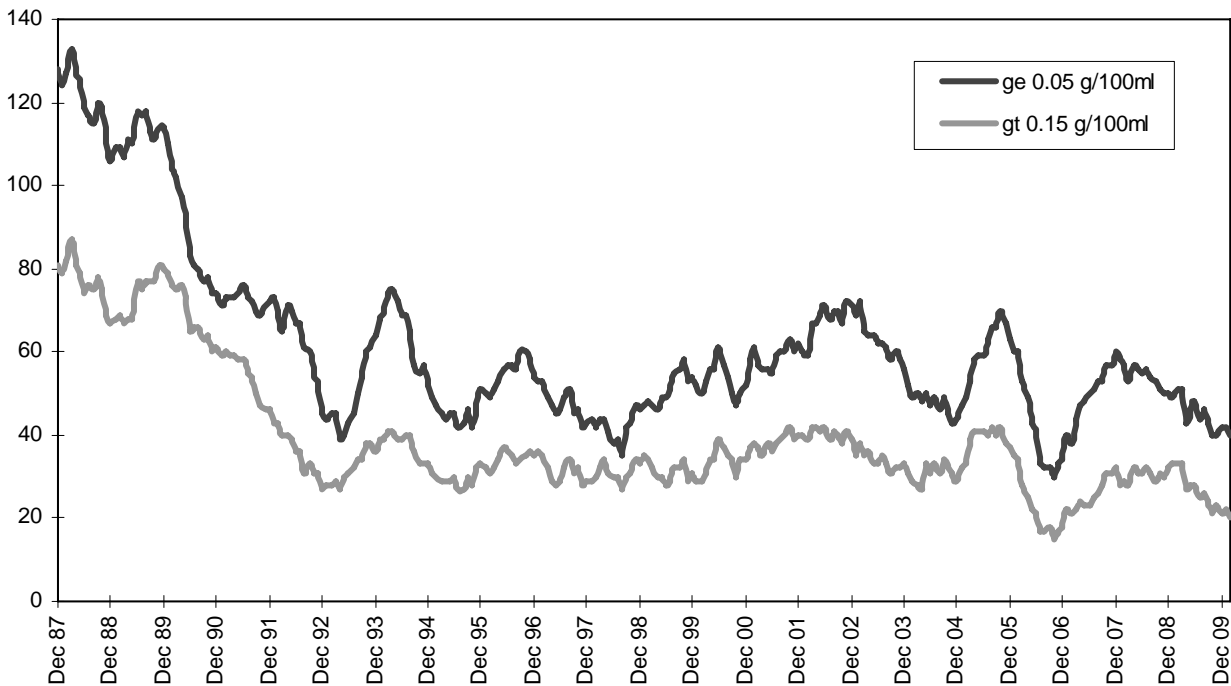


Graph 3a – Pedestrian deaths by BAC

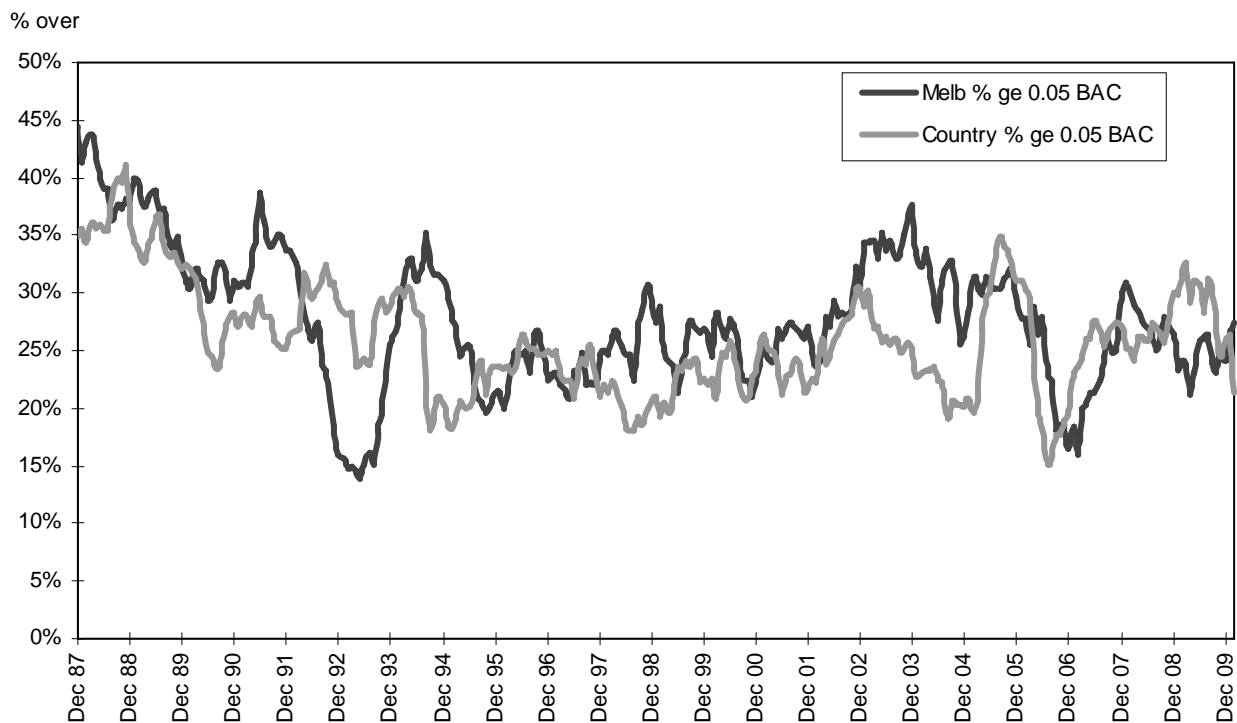




Graph 3b – Driver/rider deaths by BAC



Graph 3c – Proportion of driver/rider deaths with a BAC ge 0.05



Graph 4a – Booze-Bus RBTs



Graph 4b – RBT: Percentage positive readings

