



# ROAD SAFETY STATISTICAL SUMMARY DECEMBER 2009



TRANSPORT  
ACCIDENT  
COMMISSION

60 Brougham Street  
Geelong Vic 3220  
PO Box 742  
Geelong Vic 3220  
Ausdoc DX 216079 Geelong

Telephone 1300 654 329  
STD Toll Free 1800 332 556  
Fax: 03 9656 9300  
www.tac.vic.gov.au  
ABN 22 033 947 623



## Contents

<b>Status Report</b> .....	3
Road Toll (updated snapshot)	
Overview	
<b>Tables</b> .....	4-7
Fatalities (rolling 12 month)	
Serious Injuries (rolling 12 month)	
Overview	
Sex	
Roaduser	
Location	
Age Group	
Alctime	
Police District	
Accident Type	
Victorian Road Deaths – monthly totals since 1951 .....	8
Fatalities by Week (2004 to 2009) .....	9
Alcohol Related Deaths .....	10
The National Picture .....	11
Police Enforcement .....	12
Explanations and References .....	13
Alcohol times (“Alctime”) explained	
Useful internet sites	
<b>Graphs</b> (12 month moving totals) .....	14-18

## Status Report

### Road Toll (annual, accurate as at midnight 29 January 2010)

- The road toll in 2009 was 290, 4% less than in 2008 (303).
- 21 people died in November and 34 in December on Victorian roads. This compares to 26 in November 2008 and 25 in December 2008.

\* Due to a change in coding of accident injury severity following the introduction of the new crash data system by Victoria Police, it is not possible to compare serious injury data from 2006 onwards with previous years' data, as a discontinuity in the data series has been introduced with the introduction of a new reporting system on 1 January 2006.

Category	2009	2008	2007	2009 v 2008	2009 v 2007	5 Year Av
<b>Casualties (Rolling 12 Month Total)</b>						
<b>Fatal (to December)</b>	<b>290</b>	<b>303</b>	<b>332</b>	<b>-13</b>	<b>(-4%)</b>	<b>322</b>
per 10,000 veh	0.72	0.77	0.86	-0.05	(-6%)	0.86
per 100,000 pop	5.34	5.72	6.38	-0.38	(-7%)	6.31

Category	2009	2008	2007	2009 v 2008	2009 v 2007	3 Year Av
<b>Accidents (Rolling 12 Month Total)</b>						
<b>Fatal (to December)</b>	<b>268</b>	<b>278</b>	<b>289</b>	<b>-10</b>	<b>(-4%)</b>	<b>292</b>
per 10,000 veh	0.66	0.70	0.75	-0.04	(-6%)	0.77
per 100,000 pop	4.94	5.25	5.55	-0.31	(-6%)	5.69

Category	2009	2008	2007	2009 v 2008	2009 v 2007	3 Year Av
<b>Casualties (Rolling 12 Month Total)</b>						
<b>*Serious (to June)</b>	<b>6,889</b>	<b>7,560</b>	<b>7,563</b>	<b>-671</b>	<b>(-9%)</b>	<b>7,337</b>
per 10,000 veh	17.3	19.4	19.9	-2.1	(-11%)	18.4
per 100,000 pop	128.5	144.0	146.9	-15.5	(-11%)	136.8

Category	2009	2008	2007	2009 v 2008	2009 v 2007	3 Year Av
<b>Accidents (Rolling 12 Month Total)</b>						
<b>*Serious (to June)</b>	<b>5,726</b>	<b>6,270</b>	<b>6,083</b>	<b>-544</b>	<b>(-9%)</b>	<b>6,026</b>
per 10,000 veh	14.4	16.1	16.0	-1.7	(-11%)	15.1
per 100,000 pop	106.8	119.4	118.2	-12.6	(-11%)	112.4

**Note:** Data is subject to revision as additional information about known accidents is received, and as new accident reports are received and processed.

## Fatalities: 12 months to December

Category	2009	2008	2007	2009 v 2008	2009 v 2007	5 Year Av
<b>Overview</b>						
Fatalities	290	303	332	-13 (-4%)	-42 (-13%)	322
Accidents	268	278	289	-10 (-4%)	-21 (-7%)	292
<b>Sex</b>						
Male	196	211	243	-15 (-7%)	-47 (-19%)	229
Female	93	92	89	1 (1%)	4 (4%)	92
<b>Roaduser</b>						
Bicyclist	6	9	6	-3 (-33%)	0 (0%)	8
Driver	142	140	173	2 (1%)	-31 (-18%)	155
Motorcyclist	38	43	45	-5 (-12%)	-7 (-16%)	44
Passenger	54	52	67	2 (4%)	-13 (-19%)	63
Pedestrian	50	59	41	-9 (-15%)	9 (22%)	51
<b>Location</b>						
Melbourne	146	166	158	-20 (-12%)	-12 (-8%)	158
Rural Victoria	144	137	174	7 (5%)	-30 (-17%)	164
<b>Agegroup</b>						
0-4	6	5	3	1 (20%)	3 (100%)	4
5-15	11	6	11	5 (83%)	0 (0%)	9
16-17	6	11	10	-5 (-45%)	-4 (-40%)	11
18-20	36	28	39	8 (29%)	-3 (-8%)	35
21-25	26	44	42	-18 (-41%)	-16 (-38%)	40
26-29	19	22	29	-3 (-14%)	-10 (-34%)	26
30-39	43	46	54	-3 (-7%)	-11 (-20%)	54
40-49	41	43	40	-2 (-5%)	1 (2%)	42
50-59	35	32	39	3 (9%)	-4 (-10%)	33
60-69	23	17	28	6 (35%)	-5 (-18%)	23
70+	44	49	37	-5 (-10%)	7 (19%)	45
Unknown	0	0	0	0	0	0
<b>Altime</b>						
High (Melb)	76	81	84	-5 (-6%)	-8 (-10%)	85
High (Rural)	64	69	74	-5 (-7%)	-10 (-14%)	79
High (Vic)	140	150	158	-10 (-7%)	-18 (-11%)	164
Low (Melb)	70	85	74	-15 (-18%)	-4 (-5%)	73
Low (Rural)	80	68	100	12 (18%)	-20 (-20%)	84
Low (Vic)	150	153	174	-3 (-2%)	-24 (-14%)	157
Unknown	0	0	0	0	0	0

## Fatalities: 12 months to December

Category	2009	2008	2007	2009 v 2008	2009 v 2007	5 Year Av
<b>Police Region and Division</b>						
<b>Region 1</b>	<b>16</b>	<b>28</b>	<b>31</b>	<b>-12</b>	<b>(-43%)</b>	<b>25</b>
1-1 Melbourne	2	9	10	-7	(-78%)	6
1-2 Prahran	3	3	8	0	(0%)	5
1-3 Caulfield	6	5	6	1	(20%)	6
1-4 Moorabbin	5	11	7	-6	(-55%)	8
<b>Region 2</b>	<b>63</b>	<b>66</b>	<b>68</b>	<b>-3</b>	<b>(-5%)</b>	<b>75</b>
2-1 Altona North	16	18	25	-2	(-11%)	18
2-2 Geelong	15	19	10	-4	(-21%)	16
2-3 Ballarat	8	17	11	-9	(-53%)	15
2-4 Horsham	6	5	3	1	(20%)	8
2-5 Warrnambool	18	7	19	11	(157%)	18
<b>Region 3</b>	<b>63</b>	<b>67</b>	<b>90</b>	<b>-4</b>	<b>(-6%)</b>	<b>74</b>
3-1 Mill Park	11	10	9	1	(10%)	10
3-2 Broadmeadows	13	18	16	-5	(-28%)	15
3-3 Bendigo	18	16	19	2	(13%)	17
3-4 Shepparton	15	11	21	4	(36%)	17
3-5 Mildura	6	12	25	-6	(-50%)	14
<b>Region 4</b>	<b>80</b>	<b>61</b>	<b>66</b>	<b>19</b>	<b>(31%)</b>	<b>69</b>
4-1 Rosanna	11	5	4	6	(120%)	7
4-2 Nunawading	21	13	16	8	(62%)	15
4-3 Knox	21	17	19	4	(24%)	20
4-4 Seymour	13	20	15	-7	(-35%)	17
4-5 Wangaratta	14	6	12	8	(133%)	11
<b>Region 5</b>	<b>68</b>	<b>81</b>	<b>77</b>	<b>-13</b>	<b>(-16%)</b>	<b>79</b>
5-1 Frankston	11	25	12	-14	(-56%)	16
5-2 Dandenong	22	24	24	-2	(-8%)	26
5-3 Morwell	18	13	23	5	(38%)	19
5-4 Bairnsdale	17	19	18	-2	(-11%)	17
<b>Accident Type</b>						
<b>Intersection</b>						
Adjacent direction	16	24	28	-8	(-33%)	27
Opposing direction	7	7	13	0	(0%)	10
<b>Other</b>						
Head on	36	37	43	-1	(-3%)	42
Same direction	17	17	19	0	(0%)	19
Manoeuvre/o'taking	17	17	13	0	(0%)	15
On path	5	6	6	-1	(-17%)	6
Single vehicle	129	124	148	5	(4%)	136
Other (incl peds)	63	71	62	-8	(-11%)	66

## Serious injuries: 12 months to June

Due to a change in coding of accident injury severity following the introduction of the new crash data system by Victoria Police, it is not possible to compare serious injury data from 2006 onwards with previous years' data, as a discontinuity in the data series has been introduced with the introduction of a new reporting system on 1 Jan 2006.

Category	2009	2008	2007	2009 v 2008	2009 v 2007	3 Year Av
<b>Overview</b>						
Casualties	6,889	7,560	7,563	-671 (-9%)	-674 (-9%)	7,337
Accidents	5,726	6,270	6,083	-544 (-9%)	-357 (-6%)	6,026
<b>Sex</b>						
Male	4,057	4,467	4,225	-410 (-9%)	-168 (-4%)	4,250
Female	2,776	3,056	3,203	-280 (-9%)	-427 (-13%)	3,012
Unknown	56	37	135	19 (51%)	-79 (-59%)	76
<b>Roaduser</b>						
Bicyclist	474	519	496	-45 (-9%)	-22 (-4%)	496
Driver	3,240	3,581	3,649	-341 (-10%)	-409 (-11%)	3,490
Motorcyclist	1,085	1,159	935	-74 (-6%)	150 (16%)	1,060
Passenger	1,371	1,537	1,718	-166 (-11%)	-347 (-20%)	1,542
Pedestrian	714	761	763	-47 (-6%)	-49 (-6%)	746
Unknown	5	3	2	2	3	3
<b>Location</b>						
Melbourne	4,772	5,355	5,368	-583 (-11%)	-596 (-11%)	5,165
Rural Victoria	2,056	2,135	2,141	-79 (-4%)	-85 (-4%)	2,111
Unknown	61	70	54	-9	7	62
<b>Agegroup</b>						
0-4	58	69	78	-11 (-16%)	-20 (-26%)	68
5-15	285	336	391	-51 (-15%)	-106 (-27%)	337
16-17	192	218	262	-26 (-12%)	-70 (-27%)	224
18-20	780	849	839	-69 (-8%)	-59 (-7%)	823
21-25	904	1,064	1,053	-160 (-15%)	-149 (-14%)	1,007
26-29	583	642	611	-59 (-9%)	-28 (-5%)	612
30-39	1,183	1,328	1,280	-145 (-11%)	-97 (-8%)	1,264
40-49	1,002	1,043	1,075	-41 (-4%)	-73 (-7%)	1,040
50-59	705	801	758	-96 (-12%)	-53 (-7%)	755
60-69	506	495	462	11 (2%)	44 (10%)	488
70+	596	591	556	5 (1%)	40 (7%)	581
Unknown	95	124	198	-29 (-23%)	-103 (-52%)	139
<b>Altime</b>						
High (Melb)	2,307	2,480	2,534	-173 (-7%)	-227 (-9%)	2,440
High (Rural)	938	971	934	-33 (-3%)	4 (0%)	948
High (Vic)	3,245	3,451	3,468	-206 (-6%)	-223 (-6%)	3,388
Low (Melb)	2,465	2,875	2,834	-410 (-14%)	-369 (-13%)	2,725
Low (Rural)	1,118	1,164	1,207	-46 (-4%)	-89 (-7%)	1,163
Low (Vic)	3,583	4,039	4,041	-456 (-11%)	-458 (-11%)	3,888
Unknown	61	70	54	-9	7	62

## Serious injuries: 12 months to June

Due to a change in coding of accident injury severity following the introduction of the new crash data system by Victoria Police, it is not possible to compare serious injury data from 2006 onwards with previous years' data, as a discontinuity in the data series has been introduced with the introduction of a new reporting system on 1 Jan 2006.

Category	2009	2008	2007	2009 v 2008	2009 v 2007	2009 v 2007	3 Year Av	
<b>Police Region and Division</b>								
<b>Region 1</b>	<b>1,210</b>	<b>1,271</b>	<b>1,223</b>	<b>-61</b>	<b>(-5%)</b>	<b>-13</b>	<b>(-1%)</b>	<b>1,235</b>
1-1 Melbourne	374	366	374	8	(2%)	0	(0%)	371
1-2 Prahran	281	251	248	30	(12%)	33	(13%)	260
1-3 Caulfield	279	338	295	-59	(-17%)	-16	(-5%)	304
1-4 Moorabbin	276	316	306	-40	(-13%)	-30	(-10%)	299
<b>Region 2</b>	<b>1,504</b>	<b>1,519</b>	<b>1,498</b>	<b>-15</b>	<b>(-1%)</b>	<b>6</b>	<b>(0%)</b>	<b>1,507</b>
2-1 Altona North	569	553	522	16	(3%)	47	(9%)	548
2-2 Geelong	432	467	456	-35	(-7%)	-24	(-5%)	452
2-3 Ballarat	282	260	271	22	(8%)	11	(4%)	271
2-4 Horsham	77	88	97	-11	(-13%)	-20	(-21%)	87
2-5 Warrnambool	144	151	152	-7	(-5%)	-8	(-5%)	149
<b>Region 3</b>	<b>1,267</b>	<b>1,377</b>	<b>1,387</b>	<b>-110</b>	<b>(-8%)</b>	<b>-120</b>	<b>(-9%)</b>	<b>1,344</b>
3-1 Mill Park	245	295	316	-50	(-17%)	-71	(-22%)	285
3-2 Broadmeadows	476	498	521	-22	(-4%)	-45	(-9%)	498
3-3 Bendigo	215	234	203	-19	(-8%)	12	(6%)	217
3-4 Shepparton	215	201	201	14	(7%)	14	(7%)	206
3-5 Mildura	116	149	146	-33	(-22%)	-30	(-21%)	137
<b>Region 4</b>	<b>1,463</b>	<b>1,671</b>	<b>1,781</b>	<b>-208</b>	<b>(-12%)</b>	<b>-318</b>	<b>(-18%)</b>	<b>1,638</b>
4-1 Rosanna	207	223	271	-16	(-7%)	-64	(-24%)	234
4-2 Nunawading	509	587	639	-78	(-13%)	-130	(-20%)	578
4-3 Knox	424	529	525	-105	(-20%)	-101	(-19%)	493
4-4 Seymour	177	176	210	1	(1%)	-33	(-16%)	188
4-5 Wangaratta	146	156	136	-10	(-6%)	10	(7%)	146
<b>Region 5</b>	<b>1,384</b>	<b>1,652</b>	<b>1,620</b>	<b>-268</b>	<b>(-16%)</b>	<b>-236</b>	<b>(-15%)</b>	<b>1,552</b>
5-1 Frankston	360	429	395	-69	(-16%)	-35	(-9%)	395
5-2 Dandenong	634	781	809	-147	(-19%)	-175	(-22%)	741
5-3 Morwell	236	279	280	-43	(-15%)	-44	(-16%)	265
5-4 Bairnsdale	154	163	136	-9	(-6%)	18	(13%)	151
Unknown	61	70	54	-9		7		62
<b>Accident Type</b>								
<b>Intersection</b>								
Adjacent direction	1,040	1,148	1,204	-108	(-9%)	-164	(-14%)	1,131
Opposing direction	621	768	762	-147	(-19%)	-141	(-19%)	717
<b>Other</b>								
Head on	410	446	463	-36	(-8%)	-53	(-11%)	440
Same direction	1,005	1,121	1,160	-116	(-10%)	-155	(-13%)	1,095
Manoeuvre/o'taking	466	432	470	34	(8%)	-4	(-1%)	456
On path	337	358	327	-21	(-6%)	10	(3%)	341
Single vehicle	2,228	2,438	2,355	-210	(-9%)	-127	(-5%)	2,340
Other (incl peds)	782	849	822	-67	(-8%)	-40	(-5%)	818

## Victorian Road Deaths: monthly totals since 1951

Year	Jan	Feb	Mar	Apr	May	Jun	Jul	Aug	Sep	Oct	Nov	Dec	Totals
1951							61	59	52	38	29	41	
1952	45	40	54	61	54	69	67	55	44	44	31	20	584
1953	23	28	54	58	49	42	50	37	44	27	36	32	480
1954	44	42	28	60	55	36	63	33	25	52	30	41	509
1955	44	36	45	55	48	56	64	44	44	32	40	40	548
1956	34	48	51	67	53	65	71	47	39	39	44	48	606
1957	50	41	46	58	52	54	57	53	51	46	32	49	589
1958	50	38	42	58	54	41	54	53	57	40	57	52	596
1959	50	57	61	50	75	55	42	48	52	55	63	63	671
1960	49	53	57	76	70	70	67	62	61	77	52	66	760
1961	63	57	68	74	58	68	78	82	59	62	60	65	794
1962	65	41	76	78	72	80	70	77	62	53	64	70	808
1963	67	56	65	85	66	68	77	55	55	58	61	67	780
1964	73	71	78	71	83	89	80	89	67	66	62	75	904
1965	63	64	86	88	80	87	79	69	81	77	68	87	929
1966	75	59	75	103	74	86	87	80	75	66	90	85	955
1967	61	79	91	97	81	71	59	67	70	68	60	83	887
1968	70	78	86	78	73	76	73	77	72	80	81	105	949
1969	79	68	79	87	86	77	87	83	87	83	94	101	1,011
1970	85	84	106	80	87	88	110	106	78	95	68	74	1,061
1971	83	75	77	68	76	86	85	72	78	73	74	76	923
1972	61	62	75	82	75	71	98	85	83	62	80	81	915
1973	75	75	95	85	64	66	61	85	89	88	66	86	935
1974	56	62	81	60	70	73	67	62	53	70	80	72	806
1975	67	65	87	73	97	94	57	75	69	66	71	89	910
1976	79	78	88	78	69	79	60	70	82	78	77	100	938
1977	65	71	89	79	65	79	70	91	68	74	96	107	954
1978	75	54	95	63	64	69	68	77	65	84	83	72	869
1979	63	60	86	75	45	64	66	75	69	79	72	93	847
1980	48	55	66	59	47	56	60	53	45	58	61	49	657
1981	69	60	58	61	74	65	61	63	68	71	59	57	766
1982	55	53	59	59	67	45	47	71	53	69	65	66	709
1983	42	59	53	63	62	61	65	51	59	43	54	52	664
1984	65	48	58	50	56	48	46	50	71	53	55	58	658
1985	56	47	50	65	75	50	51	50	58	61	56	64	683
1986	56	50	70	69	59	53	42	54	54	52	59	51	669
1987	62	43	57	52	63	59	62	49	62	61	55	80	705
1988	49	58	69	54	79	50	54	52	64	59	43	70	701
1989	76	65	80	59	67	73	52	65	82	50	41	66	776
1990	48	44	55	39	56	64	41	34	48	35	40	44	548
1991	45	39	70	30	34	29	44	47	41	36	35	53	503
1992	34	33	34	47	33	29	23	27	28	38	30	40	396
1993	27	40	37	39	44	33	33	27	34	39	43	40	436
1994	36	31	44	35	27	33	29	37	17	27	32	30	378
1995	38	35	26	33	34	41	27	34	34	32	38	46	418
1996	40	47	35	38	28	29	30	35	49	24	33	30	418
1997	36	25	30	30	40	22	39	26	26	29	39	35	377
1998	29	29	32	36	31	22	40	19	37	36	49	30	390
1999	32	31	35	35	34	24	35	26	28	38	29	37	384
2000	32	26	46	32	39	32	33	29	36	29	44	29	407
2001	44	30	31	32	31	41	34	37	35	51	41	37	444
2002	32	31	45	31	45	32	27	25	31	30	31	37	397
2003	21	41	36	28	31	28	20	23	23	24	24	31	330
2004	32	22	30	30	46	28	27	26	22	28	25	27	343
2005	33	27	47	21	29	23	30	25	25	33	17	36	346
2006	24	37	23	23	27	23	25	22	43	20	31	39	337
2007	23	23	32	25	26	28	28	20	23	37	26	41	332
2008	28	20	37	25	25	20	27	27	18	25	26	25	303
2009	31	18	23	32	19	30	19	21	14	28	21	34	290
<b>Ave</b>	<b>51</b>	<b>48</b>	<b>58</b>	<b>57</b>	<b>56</b>	<b>54</b>	<b>54</b>	<b>52</b>	<b>52</b>	<b>52</b>	<b>51</b>	<b>57</b>	<b>643</b>
<b>Max</b>	<b>85</b>	<b>84</b>	<b>106</b>	<b>103</b>	<b>97</b>	<b>94</b>	<b>110</b>	<b>106</b>	<b>89</b>	<b>95</b>	<b>96</b>	<b>107</b>	<b>1,061</b>
<b>Min</b>	<b>21</b>	<b>18</b>	<b>23</b>	<b>21</b>	<b>19</b>	<b>20</b>	<b>19</b>	<b>19</b>	<b>14</b>	<b>20</b>	<b>17</b>	<b>20</b>	<b>303</b>



## Fatalities by Week (2004 to 2009)

Week Ending	2004	2005	2006	2007	2008	2009	Cumulative 2009	% Change 2009-2008	12 Month Moving Total
4-Jan	5	4	5	4	4	4	4	0%	303
11-Jan	6	7	2	1	8	11	15	25%	306
18-Jan	8	3	4	7	4	6	21	31%	308
25-Jan	7	15	13	5	3	2	23	21%	307
1-Feb	7	6	0	6	9	8	31	11%	306
8-Feb	3	4	5	6	3	5	36	16%	308
15-Feb	7	4	7	4	5	7	43	19%	310
22-Feb	7	6	17	13	4	4	47	18%	310
1-Mar	4	11	8	0	9	2	49	0%	303
8-Mar	6	6	3	14	8	2	51	-11%	297
15-Mar	8	6	6	5	10	7	58	-13%	294
22-Mar	7	14	3	3	6	4	62	-15%	292
29-Mar	7	14	10	8	9	7	69	-16%	290
5-Apr	6	9	2	6	10	8	77	-16%	288
12-Apr	5	4	4	8	3	4	81	-15%	289
19-Apr	6	6	3	5	6	8	89	-12%	291
26-Apr	11	6	7	4	7	11	100	-7%	295
3-May	9	7	9	6	6	7	107	-6%	296
10-May	11	6	11	5	3	4	111	-5%	297
17-May	10	12	2	10	8	4	115	-8%	293
24-May	8	4	8	2	7	1	116	-12%	287
31-May	12	3	5	7	3	6	122	-10%	290
7-Jun	5	6	6	15	4	4	126	-9%	290
14-Jun	9	5	4	1	7	7	133	-9%	290
21-Jun	10	9	8	4	6	7	140	-8%	291
28-Jun	4	2	4	7	2	12	152	-1%	301
5-Jul	4	7	1	5	8	2	154	-5%	295
12-Jul	6	6	10	8	7	7	161	-5%	295
19-Jul	10	6	5	9	2	2	163	-5%	295
26-Jul	3	7	8	2	6	7	170	-4%	296
2-Aug	5	8	3	6	7	3	173	-6%	292
9-Aug	11	6	8	1	8	6	179	-7%	290
16-Aug	2	6	4	2	6	7	186	-6%	291
23-Aug	5	2	3	7	3	4	190	-5%	292
30-Aug	7	8	6	9	8	0	190	-9%	284
6-Sep	5	3	2	4	2	4	194	-8%	286
13-Sep	7	3	8	6	6	2	196	-10%	282
20-Sep	5	6	11	7	6	6	202	-9%	282
27-Sep	3	13	19	5	3	2	204	-10%	281
4-Oct	5	6	4	4	9	3	207	-12%	275
11-Oct	8	9	11	13	5	7	214	-11%	277
18-Oct	7	8	2	7	5	5	219	-11%	277
25-Oct	3	3	4	9	4	7	226	-9%	280
1-Nov	8	7	4	5	5	10	236	-7%	285
8-Nov	5	6	7	5	3	3	239	-7%	285
15-Nov	8	6	4	8	8	8	247	-7%	285
22-Nov	5	2	11	5	8	6	253	-7%	283
29-Nov	6	3	6	7	5	3	256	-8%	281
6-Dec	7	8	15	6	4	6	262	-7%	283
13-Dec	5	6	5	16	8	6	268	-8%	281
20-Dec	4	5	6	7	5	10	278	-6%	286
27-Dec	9	13	11	8	8	9	287	-5%	287
31-Dec	2	4	3	5	0	3	290	-4%	
<b>Total</b>	<b>343</b>	<b>346</b>	<b>337</b>	<b>332</b>	<b>303</b>	<b>290</b>			

## Alcohol Related Deaths

### BAC Fatalities (12 months to October 2009)

- 25% of killed and tested drivers and riders had a BAC at 0.05 g/100ml or over (40 of 158) compared to 27% over the previous 12 month period (51 of 191).
- In Melbourne, 18 drivers/riders killed and tested were at or over 0.05, with 56% of these having a BAC in excess of 0.15 g/100ml. Across rural Victoria, 22 drivers/riders killed and tested were at or over 0.05, with 50% of these having a BAC over 0.15.
- Of the 40 drivers and riders killed and tested at or over 0.05, 25% (10) were aged under 21, 28% (11) were aged 21-29, 15% (6) were aged 30-39 and 33% (13) were aged 40 years and over. In the previous year (51 killed) the corresponding figures were 14% (7), 37% (19), 22% (11) and 27% (14), respectively.

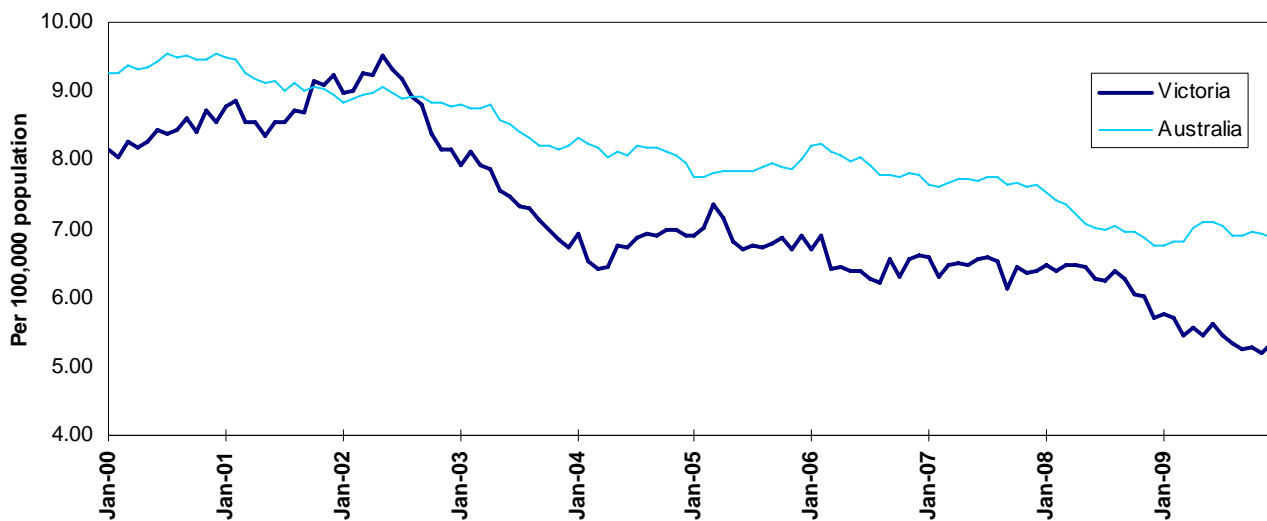
Category	2009	2008	2007	2009 v 2008	2009 v 2007	5 Year Av
<b>Melbourne Drivers and Riders</b>						
<0.05	60	62	73	-2	(-3%)	64
[a] at 0.05 & above	18	24	24	-6	(-25%)	22
% at 0.05 & above	(23%)	(28%)	(25%)			(26%)
[b] >0.15	10	11	10	-1	(-9%)	10
%>0.15	(13%)	(13%)	(10%)			(12%)
[b] as a % of [a]	(56%)	(46%)	(42%)			(46%)
BAC Unknown	3	3	2	0	(0%)	2
<b>Country Drivers and Riders</b>						
<0.05	58	78	89	-20	(-26%)	76
[a] at 0.05 & above	22	27	33	-5	(-19%)	28
% at 0.05 & above	(28%)	(26%)	(27%)			(27%)
[b] >0.15	11	20	21	-9	(-45%)	18
%>0.15	(14%)	(19%)	(17%)			(17%)
[b] as a % of [a]	(50%)	(74%)	(64%)			(64%)
BAC Unknown	6	1	4	5	(500%)	4
<b>Victorian Total Drivers and Riders</b>						
<0.05	118	140	162	-22	(-16%)	140
[a] at 0.05 & above	40	51	57	-11	(-22%)	50
% at 0.05 & above	(25%)	(27%)	(26%)			(26%)
[b] >0.15	21	31	31	-10	(-32%)	28
%>0.15	(13%)	(16%)	(14%)			(15%)
[b] as a % of [a]	(53%)	(61%)	(54%)			(56%)
BAC Unknown	9	4	6	5	(125%)	7
<b>Victorian Total Pedestrians</b>						
<0.05	38	37	28	1	(3%)	33
[a] at 0.05 & above	13	16	8	-3	(-19%)	14
% at 0.05 & above	(25%)	(30%)	(22%)			(30%)
[b] >0.15	4	12	4	-8	(-67%)	9
%>0.15	(8%)	(23%)	(11%)			(19%)
[b] as a % of [a]	(31%)	(75%)	(50%)			(64%)
BAC Unknown	7	2	1	5	(250%)	4

## The National Picture

State	Killed (12 months to December)				
	2009	2008	2007	2006	2009 v 2008
NSW	461	374	435	497	87 (23%)
VIC	290	303	332	337	-13 (-4%)
QLD	330	328	360	336	2 (1%)
SA	119	99	125	117	20 (20%)
WA	194	209	235	202	-15 (-7%)
TAS	64	40	45	55	24 (60%)
NT	31	75	57	44	-44 (-59%)
ACT	12	14	14	13	-2 (-14%)
AUST TOTAL	1,501	1,442	1,603	1,601	59 (4%)
AUST minus VIC	1,211	1,139	1,271	1,264	72 (6%)

State	Deaths per 10,000 registered vehicles (12 months to December)			Deaths per 100,000 population (12 months to December)		
	2009	2008	2007	2009	2008	2007
NSW	1.01	0.83	0.99	6.49	5.37	6.31
VIC	0.72	0.77	0.86	5.34	5.72	6.38
QLD	1.00	1.02	1.17	7.49	7.66	8.61
SA	0.98	0.83	1.08	7.33	6.18	7.89
WA	1.05	1.18	1.39	8.67	9.66	11.16
TAS	1.59	1.02	1.17	12.73	8.03	9.12
NT	2.38	6.03	4.77	13.79	34.10	26.51
ACT	0.48	0.58	0.60	3.42	4.07	4.12
AUST TOTAL	0.95	0.94	1.08	6.86	6.75	7.63
AUST minus VIC	1.03	0.99	1.15	7.36	7.08	8.04

### Victoria v Australia – 12 Month Moving Fatality Rate



## Booze-Bus Random Breath Testing

12 months to December 2009 (monthly totals)

	2009											
	Jan	Feb	Mar	Apr	May	Jun	Jul	Aug	Sep	Oct	Nov	Dec
Melbourne	117,615	33,350	41,984	102,007	108,709	90,202	91,302	90,377	91,393	90,050	77,312	83,002
Country	25,437	12,124	10,540	18,522	12,319	16,400	18,425	19,281	18,070	18,227	13,035	26,331
Vic Total	143,052	45,474	52,524	120,529	121,028	106,602	109,727	109,658	109,463	108,277	90,347	109,333

12 months to December vs previous 12 months

	2009	2008	2007	2009 v 2008	2009 v 2007
Melbourne	1,017,303	1,179,356	980,512	-162,053 (-14%)	36,791 (4%)
Country	208,711	239,829	258,343	-31,118 (-13%)	-49,632 (-19%)
Vic Total	1,226,014	1,419,185	1,238,855	-193,171 (-14%)	-12,841 (-1%)

## Mobile Safety Camera Data

Speed Infringements Issued from Mobile Cameras (monthly totals)

Monthly Average = 47,608

2009

	Jan	Feb	Mar	Apr	May	Jun	Jul	Aug	Sep	Oct	Nov	Dec
	55,949	47,286	49,261	43,314	37,758	46,126	50,428	41,211	48,564	57,619	41,750	52,024

Excessive Speed Infringements Issued from Mobile Cameras (monthly totals)

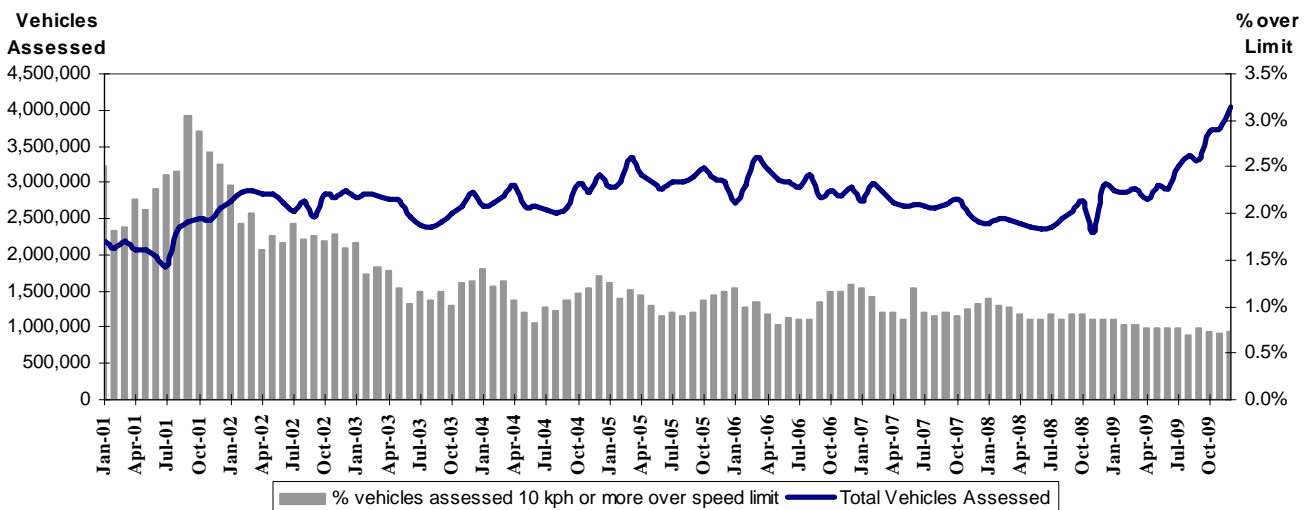
Monthly Average = 370

2009

	Jan	Feb	Mar	Apr	May	Jun	Jul	Aug	Sep	Oct	Nov	Dec
	422	351	438	359	339	394	327	366	346	461	282	352

Note: An ESI is defined as 25km/h over the speed limit except in a 110km/h zone where it is 20km/h over the limit.

Mobile Safety Cameras – Vehicles assessed and percentage of vehicles assessed 10km/h or more over speed limit per month



## Explanations and References

**Hi-Alcetime** is those times of the day and week (*shaded* in the table below) when casualty crashes are **ten times more likely to involve alcohol** than casualty crashes at other (**Lo-Alcetime**) times.

	12am - 6am	6am - 8am	8am - 10am	10am - 2pm	2pm - 4pm	4pm - 6pm	6pm - 12pm
Monday							
Tuesday							
Wednesday							
Thursday							
Friday							
Saturday							
Sunday							

## Useful Internet Sites

### TAC Sites

- TAC Safety (Road Safety) [www.tacsafety.com.au](http://www.tacsafety.com.au)
- TAC How safe is your car [www.howsafeisyourcar.com.au](http://www.howsafeisyourcar.com.au)
- TAC Learners Log [www.learnerslog.com.au](http://www.learnerslog.com.au)
- TAC Motorcycle Safety Website [www.spokes.com.au](http://www.spokes.com.au)
- TAC Corporate site [www.tac.vic.gov.au](http://www.tac.vic.gov.au)

### Victorian Sites:

- arrive alive [www.vicroads.vic.gov.au](http://www.vicroads.vic.gov.au)
- VicRoads [www.vicroads.vic.gov.au](http://www.vicroads.vic.gov.au)
- Victorian Police [www.police.vic.gov.au](http://www.police.vic.gov.au)
- Parliamentary Road Safety Committee [www.parliament.vic.gov.au/rsc/](http://www.parliament.vic.gov.au/rsc/)
- ARRB Transport Research [www.arrb.com.au](http://www.arrb.com.au)
- RACV [www.racv.com.au](http://www.racv.com.au)
- Monash University Accident Research Centre [www.monash.edu.au/muarc](http://www.monash.edu.au/muarc)
- Roadsafe [www.roadsafe.org.au](http://www.roadsafe.org.au)

### National and Interstate Sites:

- Australian Transport Safety Bureau [www.atsb.gov.au](http://www.atsb.gov.au)
- Roads and Traffic Authority (NSW) [www.rta.nsw.gov.au](http://www.rta.nsw.gov.au)
- Queensland Transport - Road Safety [transport.qld.gov.au/Home/Safety/Road](http://transport.qld.gov.au/Home/Safety/Road)
- Department of Transport (SA) [www.transport.sa.gov.au/index.htm](http://www.transport.sa.gov.au/index.htm)
- Main Roads Western Australia - Road Safety [www.mrwa.wa.gov.au](http://www.mrwa.wa.gov.au)

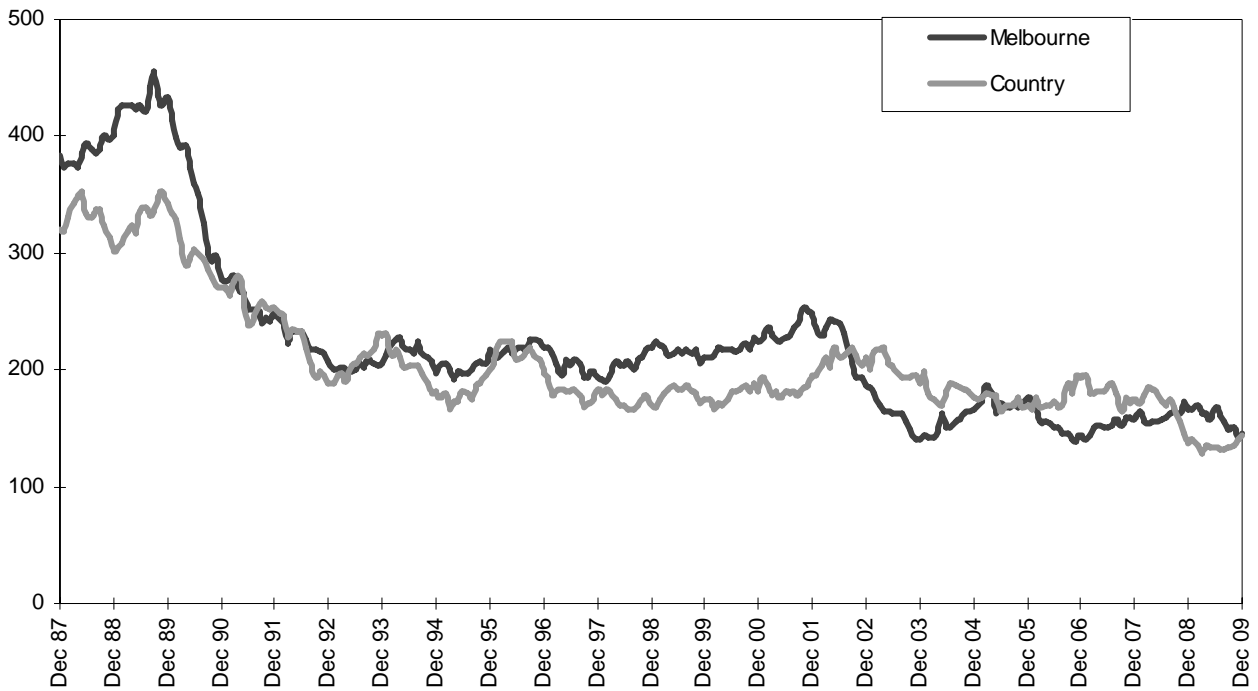
### International Sites:

- National Highway Traffic Safety Admin (USA) [www.nhtsa.dot.gov](http://www.nhtsa.dot.gov)
- Swedish Road and Transport Institute (VTI) [www.vti.se](http://www.vti.se)
- SWOV Institute for Road Safety Research [www.swov.nl](http://www.swov.nl)

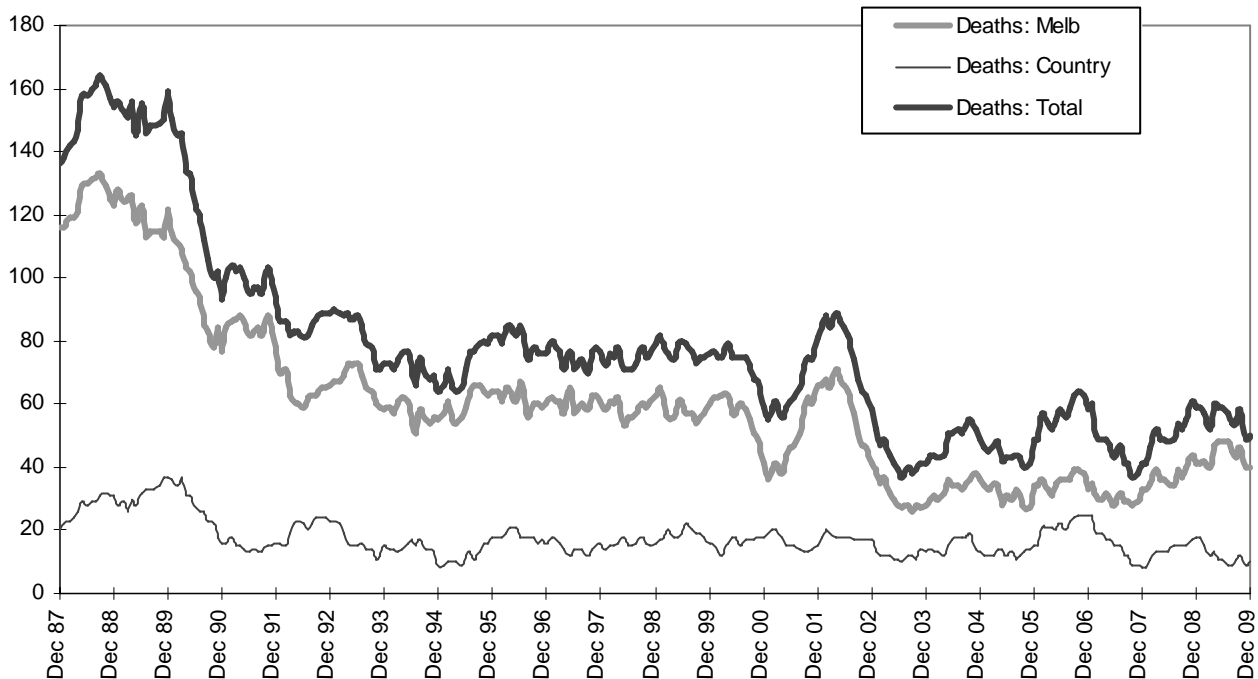
### Related Sites:

- Australian Drug Foundation [www.adf.org.au](http://www.adf.org.au)
- Bicycle Victoria [www.bv.com.au](http://www.bv.com.au)

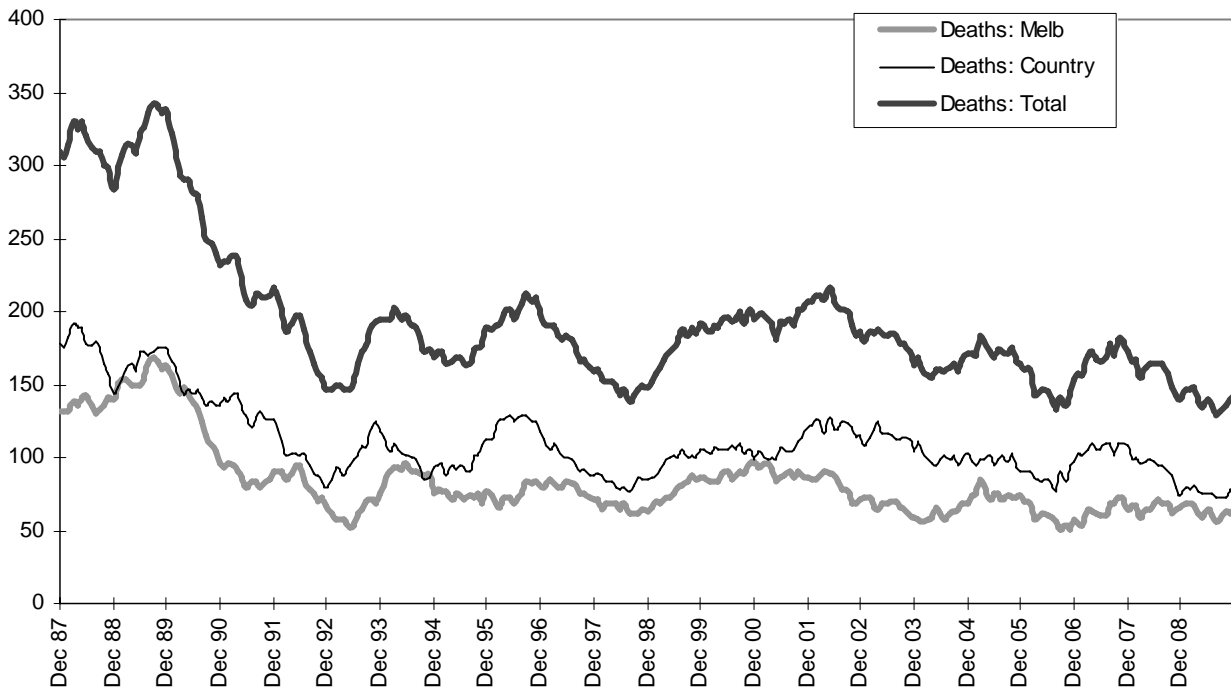
Graph 1 – Melbourne/country fatalities



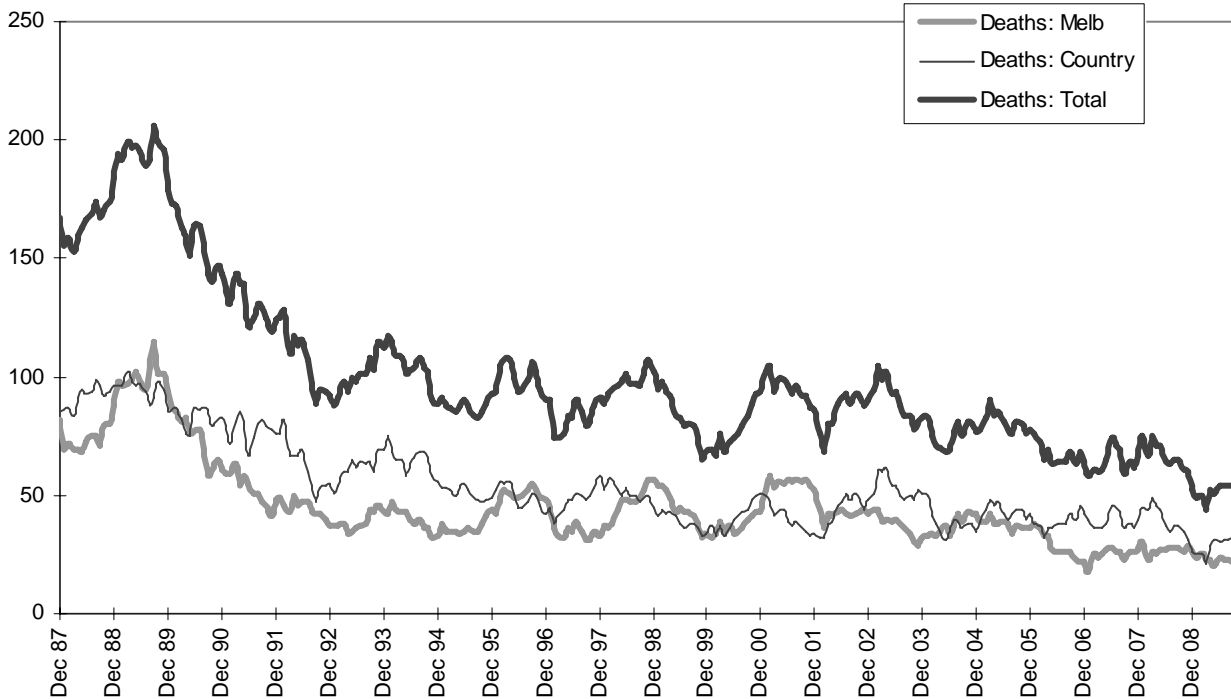
Graph 2a – Pedestrian fatalities (Melbourne/country)



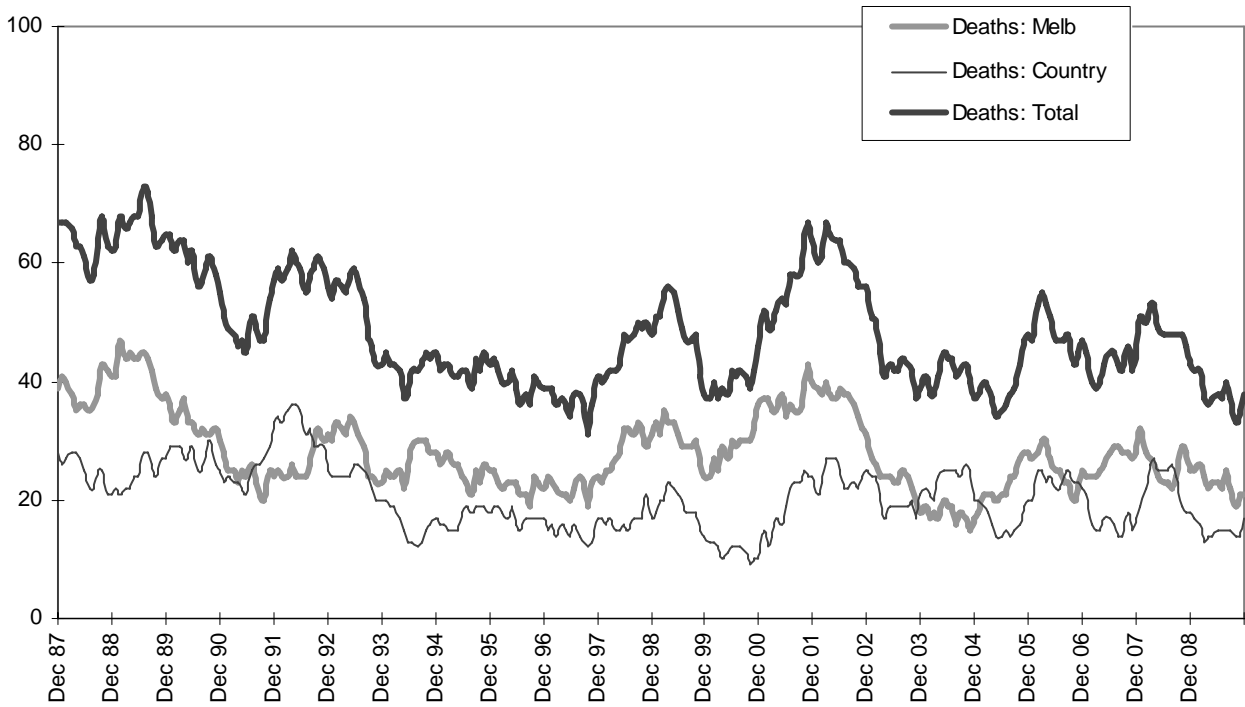
Graph 2b – Driver fatalities (Melbourne/country)



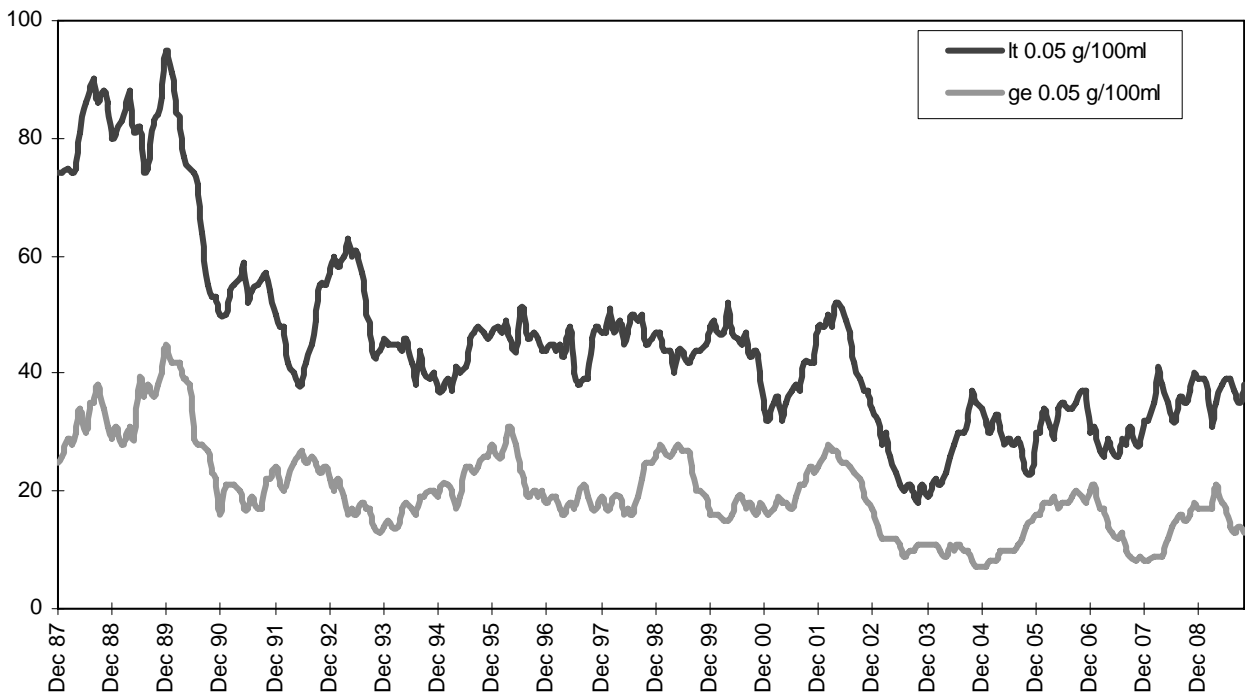
Graph 2c – Passenger fatalities (Melbourne/country)



Graph 2d –Motorcyclist fatalities (Melbourne/country)

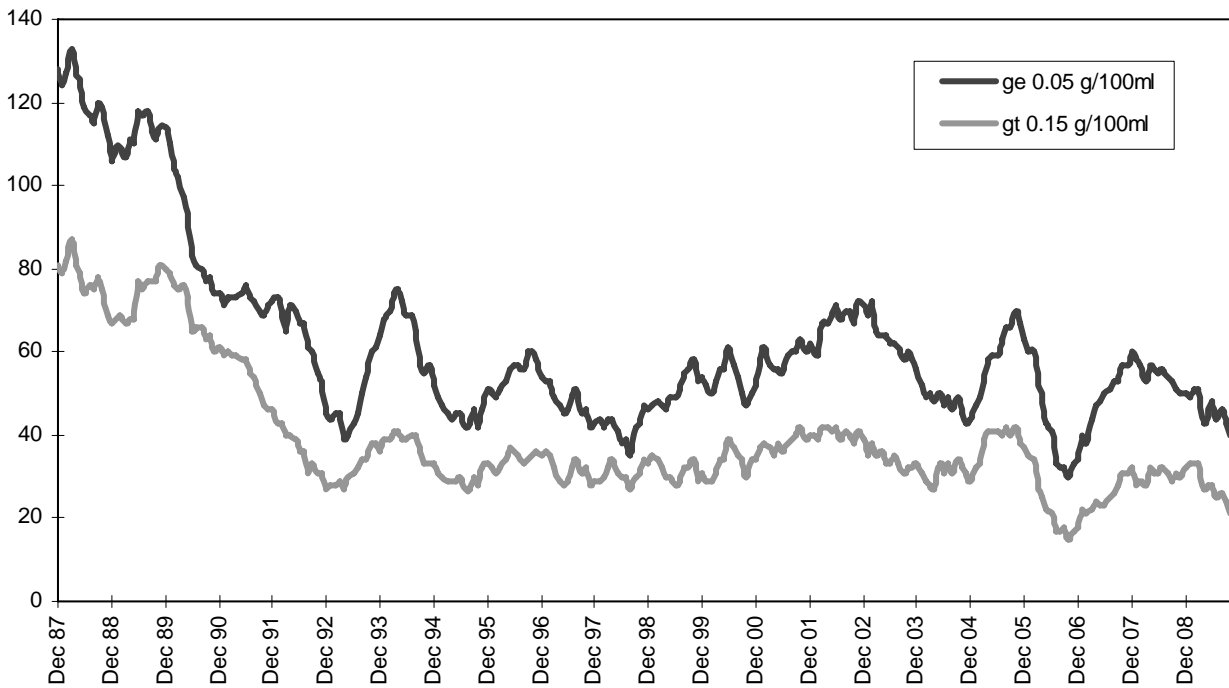


Graph 3a – Pedestrian deaths by BAC

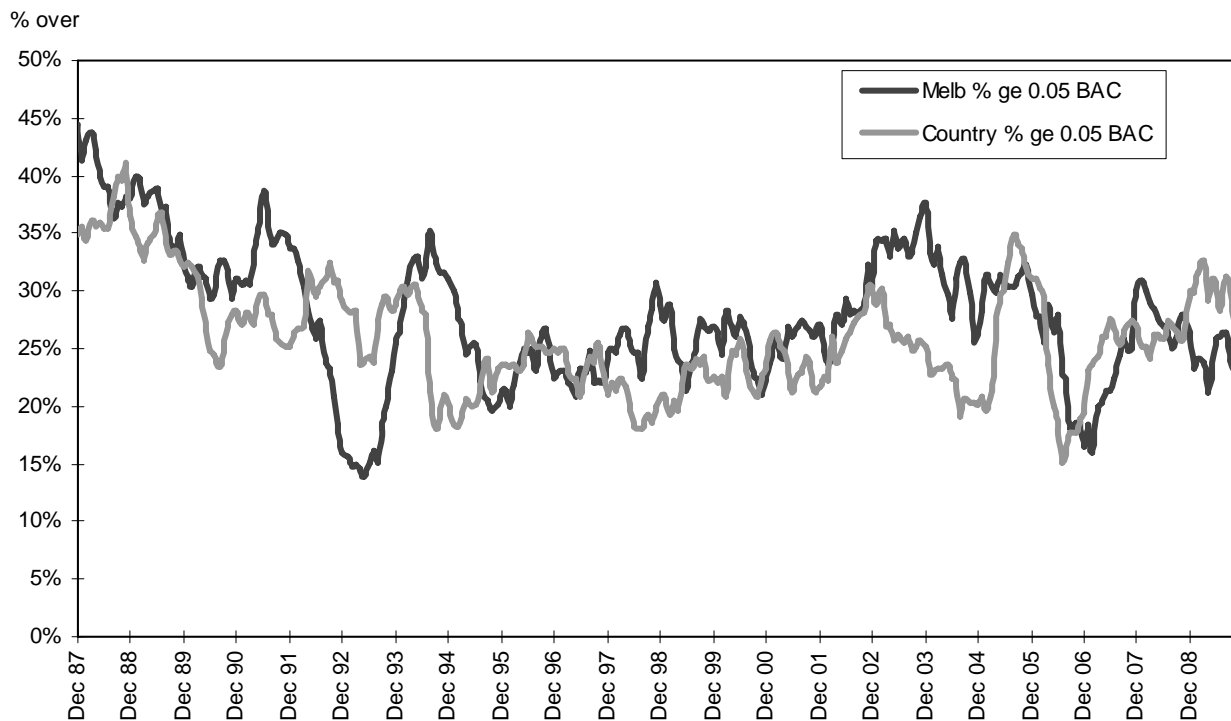




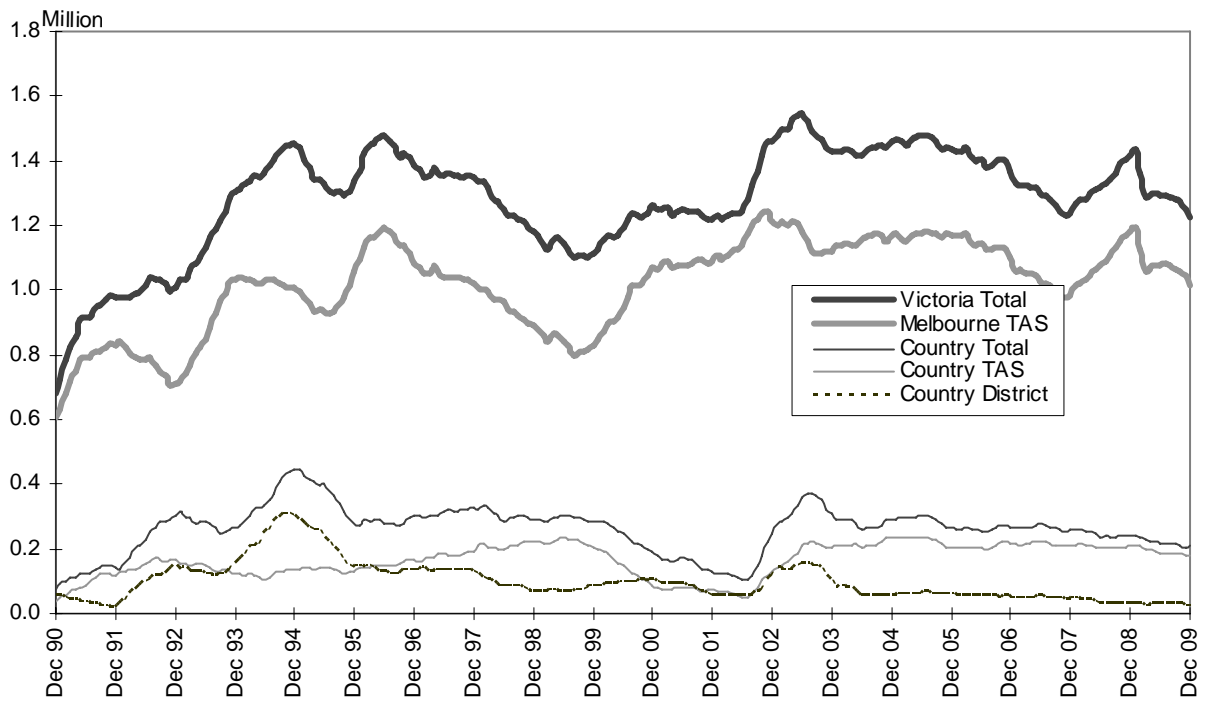
Graph 3b – Driver/rider deaths by BAC



Graph 3c – Proportion of driver/rider deaths with a BAC ge 0.05



Graph 4a – Booze-Bus RBTs



Graph 4b – RBT: Percentage positive readings

