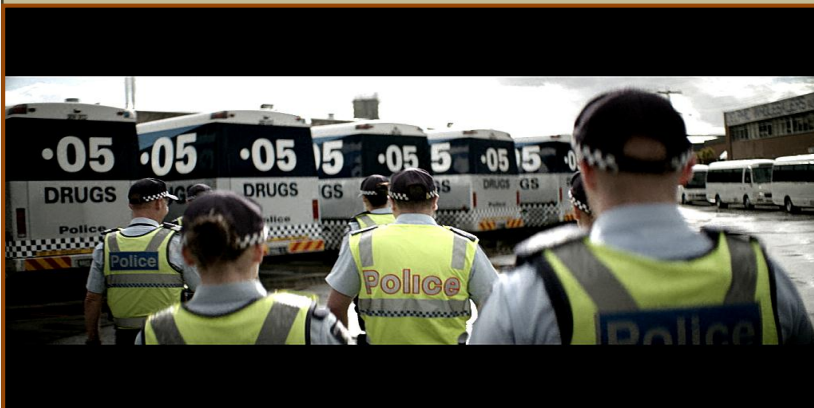
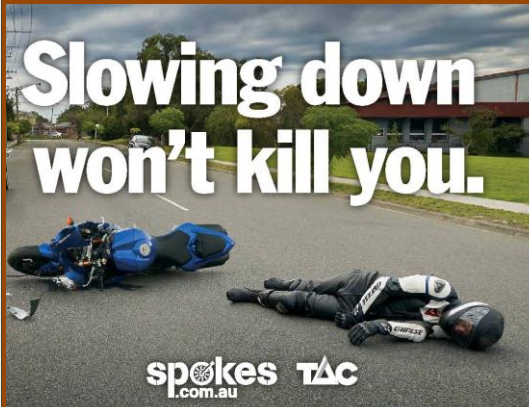


# ROAD SAFETY STATISTICAL SUMMARY

## August 2015



**TRANSPORT  
ACCIDENT  
COMMISSION**

60 Brougham Street  
Geelong Vic 3220  
PO Box 742  
Geelong Vic 3220  
Ausdoc DX 216079 Geelong

Telephone 1300 654 329  
STD Toll Free 1800 332 556  
Fax: 03 9656 9300  
www.tac.vic.gov.au  
ABN 22 033 947 623



## Contents

Status Report.....	4
Fatalities.....	4
Claims involving an acute hospital admission*.....	5
Fatalities: 12 months to August 2015.....	6
Claims involving acute hospitalisation over 14 days: 12 months to February 2015 (claim acceptance date) ....	8
Claims involving an acute hospital admission: 12 months to February 2015 (claim acceptance date) .....	10
Fatalities: Victorian monthly totals since 1951.....	12
Fatalities by Week (2009 to 2015).....	13
The National Picture.....	14
Booze-Bus Random Breath Testing .....	15
Mobile Safety Camera Data.....	15
Explanations and References .....	16
Useful Internet Sites.....	17
Figures.....	18

### Note about the data in this report

- All data provided in this report is the data most recently available at time of production. Fatalities, breath-test data and safety camera data are updated to the end of report month. A 6-month lag applies to TAC claims data.
- Reported data will have one extra day of exposure for leap years.
- Data is subject to revision as additional information about known accidents/claims is received, and as new accident/claim reports are received and processed.

\*An acute hospital admission refers to a hospital admission that occurred within 7 days of accident.

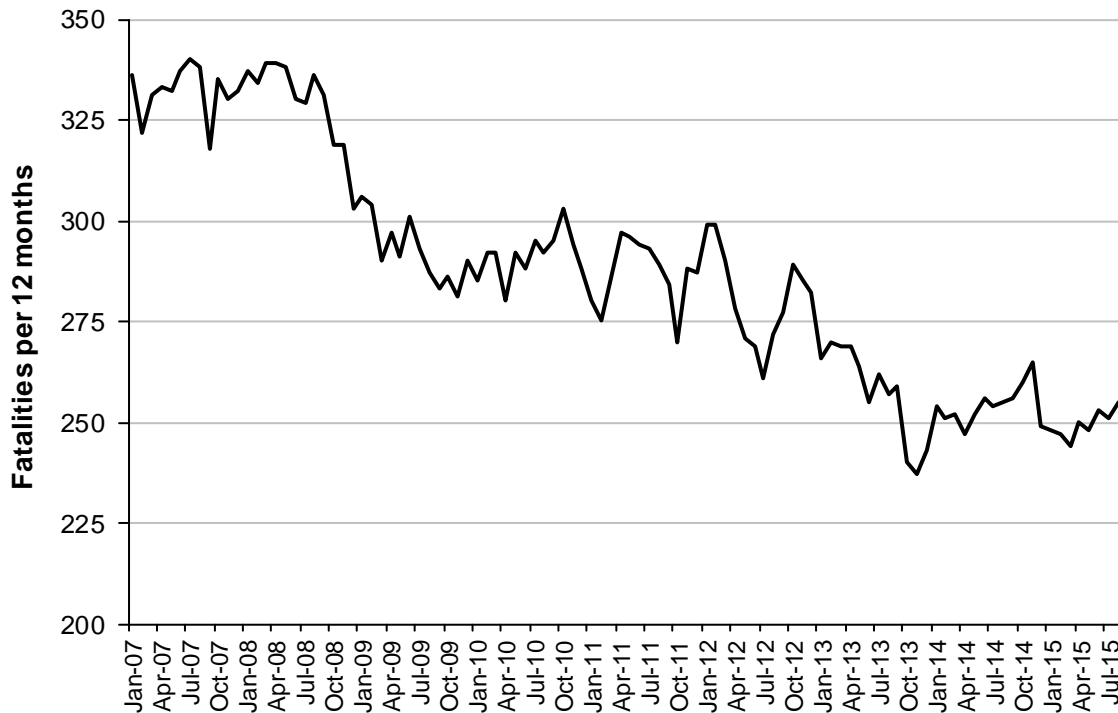
## Status Report

### Fatalities

- The rolling 12 month number of road fatalities in August 2015 stands at 255. The number of fatalities in 2014 equally stood at 255.
- 255 people were fatally injured in August 2015 on Victorian roads. This compares to 21 in August 2014.

### Fatalities (rolling 12 month, to end August 2015)

Category	2015	2014	2013	2015 v 2014		2015 v 2013		5 Year Av
<b>Fatal Injuries (Rolling 12 Month Total)</b>								
Fatal (to August)	255	255	257		<b>(+0%)</b>	<b>-2</b>	<b>(-1%)</b>	<b>266</b>
per 10,000 veh	0.56	0.57	0.59	-0.01	<b>(-2%)</b>	-0.03	<b>(-5%)</b>	0.60
per 100,000 pop	4.31	4.39	4.51	-0.08	<b>(-2%)</b>	-0.20	<b>(-4%)</b>	4.65
<b>Accidents (Rolling 12 Month Total)</b>								
Fatal (to August)	233	225	238	8	<b>(+4%)</b>	<b>-5</b>	<b>(-2%)</b>	<b>242</b>
per 10,000 veh	0.51	0.50	0.54	+0.01	<b>(+2%)</b>	-0.03	<b>(-6%)</b>	0.55
per 100,000 pop	3.94	3.87	4.18	0.07	<b>(+2%)</b>	-0.24	<b>(-6%)</b>	4.24

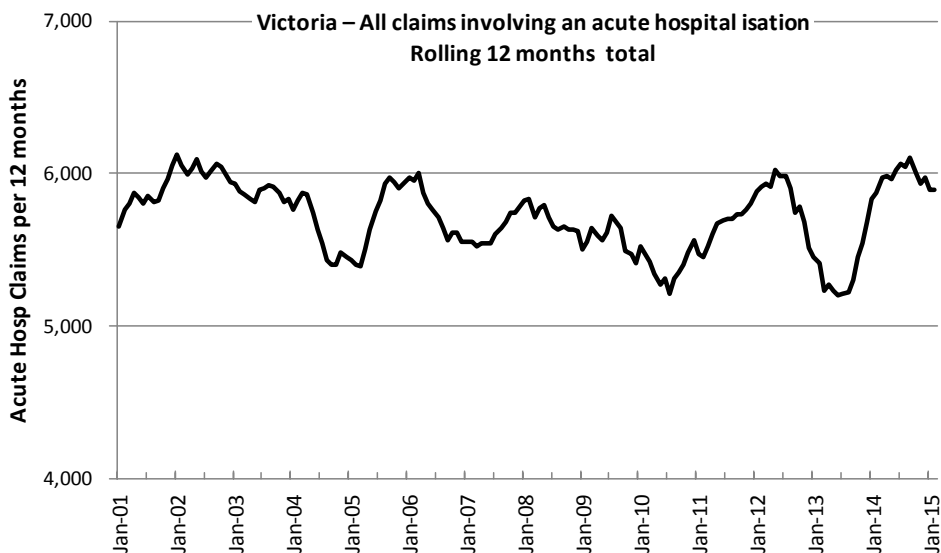


Victoria – Fatalities, rolling 12 months total

**Claims involving an acute hospital admission\***

(by claim acceptance date – rolling 12 month, to midnight 28 February 2015)

Category	2015	2014	2013	2015 v 2014		2015 v 2013		5 Year Av
<b>Claims involving an acute hospitalisation over 14 days (Rolling 12 Month Total)</b>								
Claims (to February)	875	926	893	-51	(-6%)	-18	(-2%)	889
per 100,000 pop	14.9	16.1	15.8	-1.2	(-7%)	-0.9	(-6%)	15.6
per 10,000 veh	1.9	2.1	2.1	-0.2	(-10%)	-0.2	(-10%)	2.0
<b>All claims involving an acute hospitalisation (Rolling 12 Month Total)</b>								
Claims (to February)	5,894	5,878	5,417	+16	(+0%)	+477	(+9%)	5,708
per 100,000 pop	100.6	102.1	96.0	-1.5	(-1%)	+4.6	(+5%)	100.0
per 10,000 veh	13.0	13.2	12.5	-0.2	(-2%)	+0.5	(+4%)	13.0



\*An acute hospital admission refers to a hospital admission that occurred within 7 days of accident.

## Fatalities: 12 months to August 2015

Category	2015	2014	2013	2015 v 2014		2015 v 2013		5 Year Av
<b>Overview</b>								
Fatalities	255	255	257		(0%)	-2	(-1%)	266
Accidents	233	225	238	+8	(+4%)	-5	(-2%)	242
<b>Sex</b>								
Female	72	77	80	-5	(-6%)	-8	(-10%)	77
Male	183	178	177	+5	(+3%)	+6	(+3%)	188
<b>Roaduser</b>								
Bicyclist	11	7	6	+4	(+57%)	+5	(+83%)	8
Driver	122	117	129	+5	(+4%)	-7	(-5%)	125
Motorcyclist	30	32	42	-2	(-6%)	-12	(-29%)	39
Passenger	54	53	46	+1	(+2%)	+8	(+17%)	53
Pedestrian	38	46	34	-8	(-17%)	+4	(+12%)	41
<b>Location</b>								
Melbourne	117	110	110	+7	(+6%)	+7	(+6%)	118
Rural Victoria	138	145	147	-7	(-5%)	-9	(-6%)	148
<b>Agegroup</b>								
0-4	3	3	2	0	(0%)	+1	(+50%)	3
5-15	5	8	8	-3	(-38%)	-3	(-38%)	7
16-17	13	4	3	+9	(+225%)	+10	(+333%)	7
18-20	21	14	21	+7	(+50%)	0	(0%)	23
21-25	26	24	30	+2	(+8%)	-4	(-13%)	31
26-29	22	19	12	+3	(+16%)	+10	(+83%)	19
30-39	29	39	33	-10	(-26%)	-4	(-12%)	35
40-49	33	27	33	+6	(+22%)	0	(0%)	32
50-59	27	33	32	-6	(-18%)	-5	(-16%)	31
60-69	30	31	32	-1	(-3%)	-2	(-6%)	30
70+	46	53	49	-7	(-13%)	-3	(-6%)	47
<b>Alctime</b>								
High (Melb)	62	55	65	+7	(+13%)	-3	(-5%)	62
High (Rural)	63	52	64	+11	(+21%)	-1	(-2%)	67
High (Vic)	125	107	129	+18	(+17%)	-4	(-3%)	129
Low (Melb)	55	55	45	0	(0%)	+10	(+22%)	56
Low (Rural)	75	93	83	-18	(-19%)	-8	(-10%)	81
Low (Vic)	130	148	128	-18	(-12%)	+2	(+2%)	136
<b>Accident Type</b>								
<b>Intersection</b>								
Adjacent direction	35	35	32	0	(0%)	+3	(+9%)	32
Opposing direction	12	5	2	+7	(+140%)	+10	(+500%)	7
<b>Mid-block/other</b>								
Head on	29	45	41	-16	(-36%)	-12	(-29%)	38
Same direction	9	11	17	-2	(-18%)	-8	(-47%)	13
Manoeuvre/o'taking	17	12	8	+5	(+42%)	+9	(+113%)	15
On path	4	9	4	-5	(-56%)	0	(0%)	6
Single vehicle	105	89	111	+16	(+18%)	-6	(-5%)	109
Other (incl peds)	44	49	42	-5	(-10%)	+2	(+5%)	47

## Fatalities: 12 months to August 2015 – Continued

Category	2015	2014	2013	2015 v 2014		2015 v 2013		5 Year Av
<b>Police Service Area (based on Local Government Area (see p.13))</b>								
BALLARAT	4	5	5	-1	(-20%)	-1	(-20%)	6
BANYULE	3	1	3	+2	(+200%)	0	(0%)	3
BASS COAST	5	10	4	-5	(-50%)	+1	(+25%)	7
BAW BAW	2	5	8	-3	(-60%)	-6	(-75%)	6
BENALLA	16	8	8	+8	(+100%)	+8	(+100%)	10
BENDIGO	5	3	9	+2	(+67%)	-4	(-44%)	6
BOROONDARA	2	2	7	0	(0%)	-5	(-71%)	3
BRIMBANK	4	6	5	-2	(-33%)	-1	(-20%)	6
CAMPASPE	2	7	7	-5	(-71%)	-5	(-71%)	5
CARDINIA	8	6	2	+2	(+33%)	+6	(+300%)	6
CASEY	4	6	8	-2	(-33%)	-4	(-50%)	6
CENTRAL GOLDFIELDS	1	5	1	-4	(-80%)	0	(0%)	3
DAREBIN	2	2	1	0	(0%)	+1	(+100%)	3
EAST GIPPSLAND	11	3	4	+8	(+267%)	+7	(+175%)	7
FRANKSTON	3	4	0	-1	(-25%)	+3		3
GEELONG	6	5	12	+1	(+20%)	-6	(-50%)	9
GLEN EIRA	3	6	7	-3	(-50%)	-4	(-57%)	5
GREATER DANDENONG	6	2	5	+4	(+200%)	+1	(+20%)	4
HOBSONS BAY	2	1	2	+1	(+100%)	0	(0%)	1
HORSHAM	4	2	4	+2	(+100%)	0	(0%)	4
HUME	5	3	11	+2	(+67%)	-6	(-55%)	6
KINGSTON	2	5	7	-3	(-60%)	-5	(-71%)	5
KNOX	5	6	3	-1	(-17%)	+2	(+67%)	3
LA TROBE	3	2	8	+1	(+50%)	-5	(-63%)	5
MACEDON RANGES	8	11	6	-3	(-27%)	+2	(+33%)	6
MANNINGHAM	0	1	3	-1	(-100%)	-3	(-100%)	1
MARIBYRNONG	4	1	4	+3	(+300%)	0	(0%)	3
MAROONDAH	3	0	2	+3		+1	(+50%)	2
MELBOURNE	7	3	2	+4	(+133%)	+5	(+250%)	4
MELTON	6	9	4	-3	(-33%)	+2	(+50%)	6
MILDURA	1	6	3	-5	(-83%)	-2	(-67%)	3
MITCHELL	11	5	7	+6	(+120%)	+4	(+57%)	8
MONASH	2	4	3	-2	(-50%)	-1	(-33%)	4
MOONEE VALLEY	3	4	2	-1	(-25%)	+1	(+50%)	2
MOORABOOL	6	5	11	+1	(+20%)	-5	(-45%)	8
MORELAND	5	4	2	+1	(+25%)	+3	(+150%)	4
MORNINGTON PENINSULA	12	8	1	+4	(+50%)	+11	(+1100%)	7
NILLUMBIK	2	1	0	+1	(+100%)	+2		2
NORTHERN GRAMPPIANS	2	5	5	-3	(-60%)	-3	(-60%)	4
PORT PHILLIP	1	2	3	-1	(-50%)	-2	(-67%)	2
SHEPPARTON	4	2	8	+2	(+100%)	-4	(-50%)	5
SOUTHERN GRAMPPIANS	8	4	3	+4	(+100%)	+5	(+167%)	5
STONNINGTON	4	3	2	+1	(+33%)	+2	(+100%)	2
SURF COAST	9	3	5	+6	(+200%)	+4	(+80%)	7
SWAN HILL	4	8	6	-4	(-50%)	-2	(-33%)	6
WANGARATTA	4	11	12	-7	(-64%)	-8	(-67%)	10
WARRNAMBOOL	10	17	4	-7	(-41%)	+6	(+150%)	9
WELLINGTON	5	7	3	-2	(-29%)	+2	(+67%)	5
WHITEHORSE	3	3	1	0	(0%)	+2	(+200%)	4
WHITTLESEA	4	5	3	-1	(-20%)	+1	(+33%)	5
WODONGA	6	6	3	0	(0%)	+3	(+100%)	4
WYNDHAM	6	4	9	+2	(+50%)	-3	(-33%)	6
YARRA	1	0	2	+1		-1	(-50%)	1
YARRA RANGES	6	8	7	-2	(-25%)	-1	(-14%)	8

## Claims involving acute hospitalisation over 14 days: 12 months to February 2015 (claim acceptance date)

Category	2015	2014	2013	2015 v 2014	2015 v 2013	5 Year Av
<b>Overview</b>						
Claims	875	926	893	-51 (-6%)	-18 (-2%)	889
<b>Sex</b>						
Female	347	381	378	-34 (-9%)	-31 (-8%)	360
Male	526	545	514	-19 (-3%)	+12 (+2%)	529
<b>Roaduser</b>						
Driver	336	379	384	-43 (-11%)	-48 (-13%)	350
Passenger	135	155	133	-20 (-13%)	+2 (+2%)	142
Motorcyclist	168	147	147	+21 (+14%)	+21 (+14%)	162
Pedestrian	170	200	170	-30 (-15%)	0 (0%)	179
Cyclist	38	29	33	+9 (+31%)	+5 (+15%)	36
Train/Tram	12	2	9	+10 (+500%)	+3 (+33%)	8
<b>Location</b>						
Melbourne	561	572	581	-11 (-2%)	-20 (-3%)	571
Rural Victoria	289	345	309	-56 (-16%)	-20 (-6%)	309
<b>Agegroup</b>						
0-4	3	3	1	0 (0%)	+2 (+200%)	3
5-15	16	11	10	+5 (+45%)	+6 (+60%)	13
16-17	12	15	17	-3 (-20%)	-5 (-29%)	18
18-20	49	63	54	-14 (-22%)	-5 (-9%)	57
21-25	81	81	80	0 (0%)	+1 (+1%)	81
26-29	52	42	44	+10 (+24%)	+8 (+18%)	51
30-39	99	104	107	-5 (-5%)	-8 (-7%)	107
40-49	115	119	124	-4 (-3%)	-9 (-7%)	117
50-59	111	107	100	+4 (+4%)	+11 (+11%)	104
60-69	99	107	110	-8 (-7%)	-11 (-10%)	103
70+	238	274	246	-36 (-13%)	-8 (-3%)	233
<b>Alctime</b>						
High (Melb)	218	247	246	-29 (-12%)	-28 (-11%)	242
High (Rural)	114	123	126	-9 (-7%)	-12 (-10%)	123
High (Vic)	332	370	372	-38 (-10%)	-40 (-11%)	365
Low (Melb)	343	325	335	+18 (+6%)	+8 (+2%)	330
Low (Rural)	175	222	183	-47 (-21%)	-8 (-4%)	186
Low (Vic)	518	547	518	-29 (-5%)	0 (0%)	515
<b>Accident Type</b>						
<b>Intersection</b>						
Adjacent direction	96	122	122	-26 (-21%)	-26 (-21%)	114
Opposing direction	50	67	61	-17 (-25%)	-11 (-18%)	59
<b>Mid-block/other</b>						
Head on	84	87	88	-3 (-3%)	-4 (-5%)	83
Same direction	75	73	86	+2 (+3%)	-11 (-13%)	84
Manoeuvre/o'taking	45	65	63	-20 (-31%)	-18 (-29%)	54
On path	28	24	20	+4 (+17%)	+8 (+40%)	24
Single vehicle	275	244	238	+31 (+13%)	+37 (+16%)	250
Other (incl peds)	222	244	215	-22 (-9%)	+7 (+3%)	221

Note: Excludes rejected claims and claims for interstate crashes.



Claims involving acute hospitalisation over 14 days: 12 months to February 2015 (claim acceptance date) –  
Continued

Category	2015	2014	2013	2015 v 2013		2015 v 2014		5 Year Av
<b>Police Service Area (based on Local Government Area (see p.13))</b>								
BALLARAT	10	25	10	-15	(-60%)	0	(0%)	15
BANYULE	7	11	10	-4	(-36%)	-3	(-30%)	10
BASS COAST	17	19	15	-2	(-11%)	+2	(+13%)	16
BAW BAW	10	6	12	+4	(+67%)	-2	(-17%)	10
BENALLA	24	16	19	+8	(+50%)	+5	(+26%)	20
BENDIGO	10	20	8	-10	(-50%)	+2	(+25%)	17
BOROONDARA	26	17	21	+9	(+53%)	+5	(+24%)	23
BRIMBANK	31	16	28	+15	(+94%)	+3	(+11%)	23
CAMPASPE	6	8	6	-2	(-25%)	0	(0%)	6
CARDINIA	16	10	12	+6	(+60%)	+4	(+33%)	15
CASEY	28	30	24	-2	(-7%)	+4	(+17%)	27
CENTRAL GOLDFIELDS	4	7	6	-3	(-43%)	-2	(-33%)	5
DAREBIN	17	17	21	0	(0%)	-4	(-19%)	18
EAST GIPPSLAND	11	7	17	+4	(+57%)	-6	(-35%)	12
FRANKSTON	15	13	12	+2	(+15%)	+3	(+25%)	16
GEELONG	25	34	33	-9	(-26%)	-8	(-24%)	28
GLEN EIRA	20	38	23	-18	(-47%)	-3	(-13%)	29
GREATER DANDENONG	21	32	26	-11	(-34%)	-5	(-19%)	27
HOBSONS BAY	9	11	11	-2	(-18%)	-2	(-18%)	10
HORSHAM	8	6	8	+2	(+33%)	0	(0%)	7
HUME	23	27	27	-4	(-15%)	-4	(-15%)	25
KINGSTON	22	21	20	+1	(+5%)	+2	(+10%)	20
KNOX	11	18	23	-7	(-39%)	-12	(-52%)	16
LA TROBE	11	10	13	+1	(+10%)	-2	(-15%)	14
MACEDON RANGES	19	23	16	-4	(-17%)	+3	(+19%)	18
MANNINGHAM	11	16	21	-5	(-31%)	-10	(-48%)	14
MARIBYRNONG	5	9	15	-4	(-44%)	-10	(-67%)	12
MAROONDAH	3	7	5	-4	(-57%)	-2	(-40%)	8
MELBOURNE	34	27	34	+7	(+26%)	0	(0%)	31
MELTON	11	12	20	-1	(-8%)	-9	(-45%)	13
MILDURA	6	9	11	-3	(-33%)	-5	(-45%)	8
MITCHELL	9	29	25	-20	(-69%)	-16	(-64%)	19
MONASH	18	24	18	-6	(-25%)	0	(0%)	21
MOONEE VALLEY	26	14	21	+12	(+86%)	+5	(+24%)	18
MOORABOOL	22	15	13	+7	(+47%)	+9	(+69%)	15
MORELAND	25	31	27	-6	(-19%)	-2	(-7%)	25
MORNINGTON PENINSULA	27	22	34	+5	(+23%)	-7	(-21%)	29
NILLUMBIK	8	5	9	+3	(+60%)	-1	(-11%)	6
NORTHERN GRAMPPIANS	13	13	8	0	(0%)	+5	(+63%)	9
PORT PHILLIP	22	15	10	+7	(+47%)	+12	(+120%)	13
SHEPPARTON	9	14	15	-5	(-36%)	-6	(-40%)	11
SOUTHERN GRAMPPIANS	13	7	9	+6	(+86%)	+4	(+44%)	9
STONNINGTON	14	13	13	+1	(+8%)	+1	(+8%)	16
SURF COAST	9	14	7	-5	(-36%)	+2	(+29%)	12
SWAN HILL	12	6	9	+6	(+100%)	+3	(+33%)	8
WANGARATTA	12	20	15	-8	(-40%)	-3	(-20%)	17
WARRNAMBOOL	11	15	13	-4	(-27%)	-2	(-15%)	14
WELLINGTON	11	7	11	+4	(+57%)	0	(0%)	10
WHITEHORSE	20	21	16	-1	(-5%)	+4	(+25%)	20
WHITTLESEA	18	25	28	-7	(-28%)	-10	(-36%)	21
WODONGA	7	15	10	-8	(-53%)	-3	(-30%)	10
WYNDHAM	26	20	22	+6	(+30%)	+4	(+18%)	21
YARRA	17	14	10	+3	(+21%)	+7	(+70%)	13
YARRA RANGES	30	36	20	-6	(-17%)	+10	(+50%)	31

Note: excludes rejected claims and claims for interstate crashes

## Claims involving an acute hospital admission: 12 months to February 2015 (claim acceptance date)

Category	2015	2014	2013	2015 v 2014	2015 v 2013	5 Year Av
<b>Overview</b>						
Claims	5,894	5,878	5,417	+16	(+0%)	5,708
<b>Sex</b>						
Female	2,517	2,416	2,303	+101	(+4%)	2,411
Male	3,367	3,458	3,113	-91	(-3%)	3,293
<b>Roaduser</b>						
Driver	2,619	2,635	2,581	-16	(-1%)	2,602
Passenger	1,026	1,018	902	+8	(+1%)	1,016
Motorcyclist	1,087	1,084	802	+3	(+0%)	977
Pedestrian	624	646	612	-22	(-3%)	635
Cyclist	396	387	358	+9	(+2%)	367
Train/Tram	35	28	27	+7	(+25%)	28
<b>Location</b>						
Melbourne	3,989	3,971	3,572	+18	(+0%)	3,850
Rural Victoria	1,680	1,814	1,807	-134	(-7%)	1,779
<b>Agegroup</b>						
0-4	51	57	47	-6	(-11%)	51
5-15	198	181	177	+17	(+9%)	188
16-17	92	96	112	-4	(-4%)	111
18-20	465	517	487	-52	(-10%)	516
21-25	740	744	666	-4	(-1%)	713
26-29	472	436	424	+36	(+8%)	441
30-39	913	844	854	+69	(+8%)	876
40-49	897	893	794	+4	(+0%)	859
50-59	757	749	667	+8	(+1%)	717
60-69	525	543	459	-18	(-3%)	510
70+	784	818	730	-34	(-4%)	727
<b>Alctime</b>						
High (Melb)	1,646	1,722	1,592	-76	(-4%)	1,694
High (Rural)	681	718	771	-37	(-5%)	749
High (Vic)	2,327	2,440	2,363	-113	(-5%)	2,443
Low (Melb)	2,343	2,249	1,980	+94	(+4%)	2,157
Low (Rural)	999	1,096	1,036	-97	(-9%)	1,030
Low (Vic)	3,342	3,345	3,016	-3	(-0%)	3,187
<b>Accident Type</b>						
<b>Intersection</b>						
Adjacent direction	718	853	780	-135	(-16%)	820
Opposing direction	479	524	480	-45	(-9%)	480
<b>Mid-block/other</b>						
Head on	325	311	317	+14	(+5%)	324
Same direction	895	835	813	+60	(+7%)	883
Manoeuvre/o'taking	320	344	297	-24	(-7%)	322
On path	272	265	224	+7	(+3%)	232
Single vehicle	1,697	1,617	1,448	+80	(+5%)	1,592
Other (incl peds)	1,188	1,129	1,058	+59	(+5%)	1,054

Note: excludes rejected claims and claims for interstate crashes

Claims involving an acute hospital admission: 12 months to February 2015 (claim acceptance date) –  
Continued

Category	2015	2014	2013	2015 v 2014		2015 v 2013		5 Year Av
<b>Police Service Area (based on Local Government Area (see p.13))</b>								
BALLARAT	70	109	95	-39	(-36%)	-25	(-26%)	95
BANYULE	55	62	61	-7	(-11%)	-6	(-10%)	60
BASS COAST	91	86	68	+5	(+6%)	+23	(+34%)	82
BAW BAW	70	52	62	+18	(+35%)	+8	(+13%)	60
BENALLA	98	128	102	-30	(-23%)	-4	(-4%)	118
BENDIGO	81	85	119	-4	(-5%)	-38	(-32%)	96
BOROONDARA	137	146	113	-9	(-6%)	+24	(+21%)	137
BRIMBANK	152	145	157	+7	(+5%)	-5	(-3%)	147
CAMPASPE	38	30	44	+8	(+27%)	-6	(-14%)	38
CARDINIA	119	94	84	+25	(+27%)	+35	(+42%)	99
CASEY	251	262	209	-11	(-4%)	+42	(+20%)	239
CENTRAL GOLDFIELDS	38	24	27	+14	(+58%)	+11	(+41%)	26
DAREBIN	91	89	104	+2	(+2%)	-13	(-13%)	98
EAST GIPPSLAND	59	51	91	+8	(+16%)	-32	(-35%)	64
FRANKSTON	115	110	123	+5	(+5%)	-8	(-7%)	130
GEELONG	188	236	214	-48	(-20%)	-26	(-12%)	221
GLEN EIRA	178	203	148	-25	(-12%)	+30	(+20%)	176
GREATER DANDENONG	228	273	187	-45	(-16%)	+41	(+22%)	219
HOBSONS BAY	66	71	56	-5	(-7%)	+10	(+18%)	66
HORSHAM	32	30	35	+2	(+7%)	-3	(-9%)	34
HUME	191	154	140	+37	(+24%)	+51	(+36%)	156
KINGSTON	144	135	134	+9	(+7%)	+10	(+7%)	134
KNOX	110	107	94	+3	(+3%)	+16	(+17%)	112
LA TROBE	52	68	57	-16	(-24%)	-5	(-9%)	64
MACEDON RANGES	92	111	74	-19	(-17%)	+18	(+24%)	88
MANNINGHAM	59	71	80	-12	(-17%)	-21	(-26%)	69
MARIBYRNONG	56	82	64	-26	(-32%)	-8	(-13%)	75
MAROONDAH	53	57	55	-4	(-7%)	-2	(-4%)	64
MELBOURNE	243	252	253	-9	(-4%)	-10	(-4%)	239
MELTON	68	83	74	-15	(-18%)	-6	(-8%)	74
MILDURA	22	48	37	-26	(-54%)	-15	(-41%)	36
MITCHELL	87	104	103	-17	(-16%)	-16	(-16%)	92
MONASH	200	204	169	-4	(-2%)	+31	(+18%)	178
MOONEE VALLEY	133	112	109	+21	(+19%)	+24	(+22%)	110
MOORABOOL	100	114	105	-14	(-12%)	-5	(-5%)	97
MORELAND	162	142	128	+20	(+14%)	+34	(+27%)	144
MORNINGTON PENINSULA	144	139	127	+5	(+4%)	+17	(+13%)	156
NILLUMBIK	35	27	43	+8	(+30%)	-8	(-19%)	37
NORTHERN GRAMPPIANS	53	31	40	+22	(+71%)	+13	(+33%)	38
PORT PHILLIP	158	124	103	+34	(+27%)	+55	(+53%)	122
SHEPPARTON	70	69	70	+1	(+1%)	0	(0%)	65
SOUTHERN GRAMPPIANS	47	44	49	+3	(+7%)	-2	(-4%)	46
STONNINGTON	147	141	110	+6	(+4%)	+37	(+34%)	131
SURF COAST	67	71	50	-4	(-6%)	+17	(+34%)	69
SWAN HILL	40	37	35	+3	(+8%)	+5	(+14%)	36
WANGARATTA	87	105	100	-18	(-17%)	-13	(-13%)	98
WARRNAMBOOL	68	64	77	+4	(+6%)	-9	(-12%)	83
WELLINGTON	84	58	65	+26	(+45%)	+19	(+29%)	72
WHITEHORSE	102	119	111	-17	(-14%)	-9	(-8%)	116
WHITTLESEA	139	148	156	-9	(-6%)	-17	(-11%)	137
WODONGA	46	59	88	-13	(-22%)	-42	(-48%)	62
WYNDHAM	175	145	136	+30	(+21%)	+39	(+29%)	145
YARRA	120	110	79	+10	(+9%)	+41	(+52%)	108
YARRA RANGES	158	164	165	-6	(-4%)	-7	(-4%)	175

Note: excludes rejected claims and claims for interstate crashes

**Fatalities: Victorian monthly totals since 1951**

Year	Jan	Feb	Mar	Apr	May	Jun	Jul	Aug	Sep	Oct	Nov	Dec	Totals
1951							61	59	52	38	29	41	
1952	45	40	54	61	54	69	67	55	44	44	31	20	584
1953	23	28	54	58	49	42	50	37	44	27	36	32	480
1954	44	42	28	60	55	36	63	33	25	52	30	41	509
1955	44	36	45	55	48	56	64	44	44	32	40	40	548
1956	34	48	51	67	53	65	71	47	39	39	44	48	606
1957	50	41	46	58	52	54	57	53	51	46	32	49	589
1958	50	38	42	58	54	41	54	53	57	40	57	52	596
1959	50	57	61	50	75	55	42	48	52	55	63	63	671
1960	49	53	57	76	70	70	67	62	61	77	52	66	760
1961	63	57	68	74	58	68	78	82	59	62	60	65	794
1962	65	41	76	78	72	80	70	77	62	53	64	70	808
1963	67	56	65	85	66	68	77	55	55	58	61	67	780
1964	73	71	78	71	83	89	80	89	67	66	62	75	904
1965	63	64	86	88	80	87	79	69	81	77	68	87	929
1966	75	59	75	103	74	86	87	80	75	66	90	85	955
1967	61	79	91	97	81	71	59	67	70	68	60	83	887
1968	70	78	86	78	73	76	73	77	72	80	81	105	949
1969	79	68	79	87	86	77	87	83	87	83	94	101	1,011
1970	85	84	106	80	87	88	110	106	78	95	68	74	1,061
1971	83	75	77	68	76	86	85	72	78	73	74	76	923
1972	61	62	75	82	75	71	98	85	83	62	80	81	915
1973	75	75	95	85	64	66	61	85	89	88	66	86	935
1974	56	62	81	60	70	73	67	62	53	70	80	72	806
1975	67	65	87	73	97	94	57	75	69	66	71	89	910
1976	79	78	88	78	69	79	60	70	82	78	77	100	938
1977	65	71	89	79	65	79	70	91	68	74	96	107	954
1978	75	54	95	63	64	69	68	77	65	84	83	72	869
1979	63	60	86	75	45	64	66	75	69	79	72	93	847
1980	48	55	66	59	47	56	60	53	45	58	61	49	657
1981	69	60	58	61	74	65	61	63	68	71	59	57	766
1982	55	53	59	59	67	45	47	71	53	69	65	66	709
1983	42	59	53	63	62	61	65	51	59	43	54	52	664
1984	65	48	58	50	56	48	46	50	71	53	55	58	658
1985	56	47	50	65	75	50	51	50	58	61	56	64	683
1986	56	50	70	69	59	53	42	54	54	52	59	51	669
1987	62	43	57	52	63	59	62	49	62	61	55	80	705
1988	49	58	69	54	79	50	54	52	64	59	43	70	701
1989	76	65	80	59	67	73	52	65	82	50	41	66	776
1990	48	44	55	39	56	64	41	34	48	35	40	44	548
1991	45	39	70	30	34	29	44	47	41	36	35	53	503
1992	34	33	34	47	33	29	23	27	28	38	30	40	396
1993	27	40	37	39	44	33	33	27	34	39	43	40	436
1994	36	31	44	35	27	33	29	37	17	27	32	30	378
1995	38	35	26	33	34	41	27	34	34	32	38	46	418
1996	40	47	35	38	28	29	30	35	49	24	33	30	418
1997	36	25	30	30	40	22	39	26	26	29	39	35	377
1998	29	29	32	36	31	22	40	19	37	36	49	30	390
1999	32	31	35	35	34	24	35	26	28	38	29	37	384
2000	32	26	46	32	39	32	33	29	36	29	44	29	407
2001	44	30	31	32	31	41	34	37	35	51	41	37	444
2002	32	31	45	31	45	32	27	25	31	30	31	37	397
2003	21	41	36	28	31	28	20	23	23	24	24	31	330
2004	32	22	30	30	46	28	27	26	22	28	25	27	343
2005	33	27	47	21	29	23	30	25	25	33	17	36	346
2006	24	37	23	23	27	23	25	22	43	20	31	39	337
2007	23	23	32	25	26	28	28	20	23	37	26	41	332
2008	28	20	37	25	25	20	27	27	18	25	26	25	303
2009	31	18	23	32	19	30	19	21	14	28	21	34	290
2010	26	25	23	20	31	26	26	18	17	36	12	28	288
2011	18	20	34	31	30	24	25	14	12	22	30	27	287
2012	30	20	25	19	23	22	17	25	17	34	26	24	282
2013	14	24	24	19	18	13	24	20	19	15	23	30	243
2014	25	21	25	14	23	17	22	21	20	19	28	14	249
2015	25	22	23	21	21	22	18	25					
<b>Ave</b>	<b>48</b>	<b>46</b>	<b>55</b>	<b>53</b>	<b>53</b>	<b>51</b>	<b>51</b>	<b>49</b>	<b>49</b>	<b>50</b>	<b>49</b>	<b>55</b>	<b>613</b>
<b>Max</b>	<b>85</b>	<b>84</b>	<b>106</b>	<b>103</b>	<b>97</b>	<b>94</b>	<b>110</b>	<b>106</b>	<b>89</b>	<b>95</b>	<b>96</b>	<b>107</b>	<b>1,061</b>
<b>Min</b>	<b>14</b>	<b>18</b>	<b>23</b>	<b>14</b>	<b>18</b>	<b>13</b>	<b>17</b>	<b>14</b>	<b>12</b>	<b>15</b>	<b>12</b>	<b>14</b>	<b>243</b>

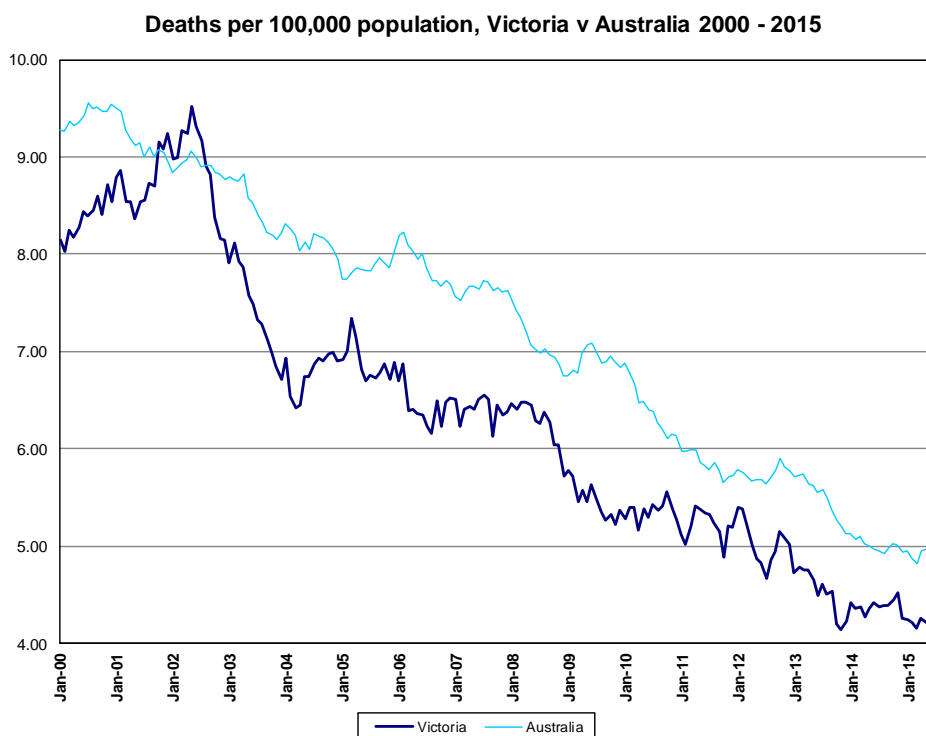
**Fatalities by Week (2009 to 2015)**

<b>Week Ending</b>	<b>2009</b>	<b>2010</b>	<b>2011</b>	<b>2012</b>	<b>2013</b>	<b>2014</b>	<b>2015</b>	<b>Cumulative 2015</b>	<b>% Change 2015-2014</b>	<b>12 Month Moving Total</b>
5-Jan	7	3	2	3	1	0	2	2	-	251
12-Jan	10	5	6	7	3	5	5	7	+40%	251
19-Jan	4	6	3	8	6	7	6	13	+8%	250
26-Jan	4	5	4	9	4	9	2	15	-29%	243
2-Feb	6	9	6	5	3	6	10	25	-7%	247
9-Feb	6	7	5	3	8	4	6	31	0%	249
16-Feb	7	4	6	7	6	8	4	35	-10%	245
23-Feb	4	8	3	6	6	2	6	41	0%	249
2-Mar	1	7	3	2	2	6	4	45	-4%	247
9-Mar	3	2	10	3	4	8	8	53	-4%	247
16-Mar	6	8	6	11	6	4	6	59	0%	249
23-Mar	6	3	9	5	10	4	2	61	-3%	247
30-Mar	8	7	9	6	2	6	3	64	-7%	244
6-Apr	5	4	6	7	4	6	3	67	-11%	241
13-Apr	5	5	9	2	6	6	6	73	-10%	241
20-Apr	11	7	7	6	4	2	7	80	-4%	246
27-Apr	9	1	6	3	5	2	4	84	-1%	248
4-May	6	6	6	10	6	3	4	88	0%	249
11-May	7	8	6	2	3	4	6	94	+2%	251
18-May	1	4	7	4	1	3	4	98	+3%	252
25-May	2	11	10	6	2	5	4	102	+2%	251
1-Jun	6	5	5	2	9	9	5	107	-2%	247
8-Jun	4	7	4	8	2	2	5	112	+1%	250
15-Jun	9	4	6	3	3	2	4	116	+3%	252
22-Jun	7	8	7	8	5	3	4	120	+3%	253
29-Jun	9	7	6	3	1	8	5	125	+1%	250
6-Jul	3	7	4	2	5	6	11	136	+5%	255
13-Jul	6	2	8	5	7	7	2	138	+1%	250
20-Jul	4	3	6	5	4	3	2	140	0%	249
27-Jul	5	8	6	5	5	4	4	144	0%	249
3-Aug	4	10	3	1	8	4	6	150	+1%	251
10-Aug	7	3	5	5	1	5	4	154	+1%	250
17-Aug	6	5	3	5	3	6	8	162	+2%	252
24-Aug	3	5	2	6	6	4	8	170	+4%	256
31-Aug	3	1	3	8	5	5	3	173	+3%	254
7-Sep	2	5	1	5	5	4				
14-Sep	4	1	4	6	2	6				
21-Sep	4	4	1	3	3	4				
28-Sep	3	5	5	3	8	3				
5-Oct	2	9	4	7	3	4				
12-Oct	6	10	5	8	2	8				
19-Oct	8	5	3	9	3	0				
26-Oct	8	7	3	6	3	8				
2-Nov	5	8	8	6	6	2				
9-Nov	3	1	6	7	8	3				
16-Nov	9	2	12	6	2	8				
23-Nov	6	3	9	5	8	3				
30-Nov	4	5	2	9	4	13				
7-Dec	5	4	10	7	6	5				
14-Dec	8	8	3	4	10	3				
21-Dec	11	6	7	1	9	3				
28-Dec	6	8	6	8	4	3				
31-Dec	2	2	1	1	1	1				
<b>Total</b>	<b>290</b>	<b>288</b>	<b>287</b>	<b>282</b>	<b>243</b>	<b>249</b>				

## The National Picture\*

State	Fatalities (12 months to August)					2015 v 2014	
	2015	2014	2013	2012			
NSW	324	329	344	381	-5	(-2%)	
VIC	255	255	257	272		(0%)	
QLD	239	230	298	270	+9	(+4%)	
SA	108	86	105	87	+22	(+26%)	
WA	169	164	176	189	+5	(+3%)	
TAS	37	41	33	22	-4	(-10%)	
NT	42	42	43	50		(0%)	
ACT	14	8	10	6	+6	(+75%)	
AUST TOTAL	1,182	1,154	1,271	1,266	+28	(+2%)	
AUST minus VIC	933	900	1,009	1,005	+33	(+4%)	

State	Fatalities per 10,000 registered vehicles (12 months to August)			Fatalities per 100,000 population (12 months to August)		
	2015	2014	2013	2015	2014	2013
NSW	0.62	0.64	0.69	4.27	4.40	4.67
VIC	0.56	0.57	0.59	4.31	4.39	4.51
QLD	0.63	0.62	0.83	5.02	4.90	6.45
SA	0.80	0.65	0.81	6.37	5.12	6.31
WA	0.77	0.77	0.86	6.48	6.43	7.09
TAS	0.82	0.93	0.76	7.17	7.98	6.44
NT	2.71	2.76	2.89	16.91	17.30	18.10
ACT	0.49	0.29	0.37	3.61	2.08	2.63
AUST TOTAL	0.66	0.65	0.74	4.99	4.94	5.58
AUST minus VIC	0.69	0.68	0.79	5.17	5.10	5.86



\* Only Victoria's data are updated to August 2015. The rest are updated to July 2015.

## Booze-Bus Random Breath Testing

12 months to March 2015 (monthly totals)

	2014						2015					
	Apr	May	Jun	Jul	Aug	Sep	Oct	Nov	Dec	Jan	Feb	Mar
Melbourne	96,725	107,794	103,200	110,427	110,124	101,857	100,252	86,261	99,008	95,430	76,758	84,559
Country	9,737	12,033	7,548	9,300	7,841	7,989	8,116	10,510	7,084	5,191	7,882	5,830
Vic Total	106,462	119,827	110,748	119,727	117,965	109,846	108,368	96,771	106,092	100,621	84,640	90,389

12 months to March 2015 vs previous 12 months

	2015	2014	2013	2015 v 2014		2015 v 2013	
Melbourne	1,172,395	1,060,175	1,062,075	+112,220	(+11%)	+110,320	(+10%)
Country	99,061	90,264	101,223	+8,797	(+10%)	-2,162	(-2%)
Vic Total	1,271,456	1,150,439	1,163,298	+121,017	(+11%)	+108,158	(+9%)

## Mobile Safety Camera Data

Speed Infringements Issued from Mobile Cameras (monthly totals)

Monthly Average = 33,669

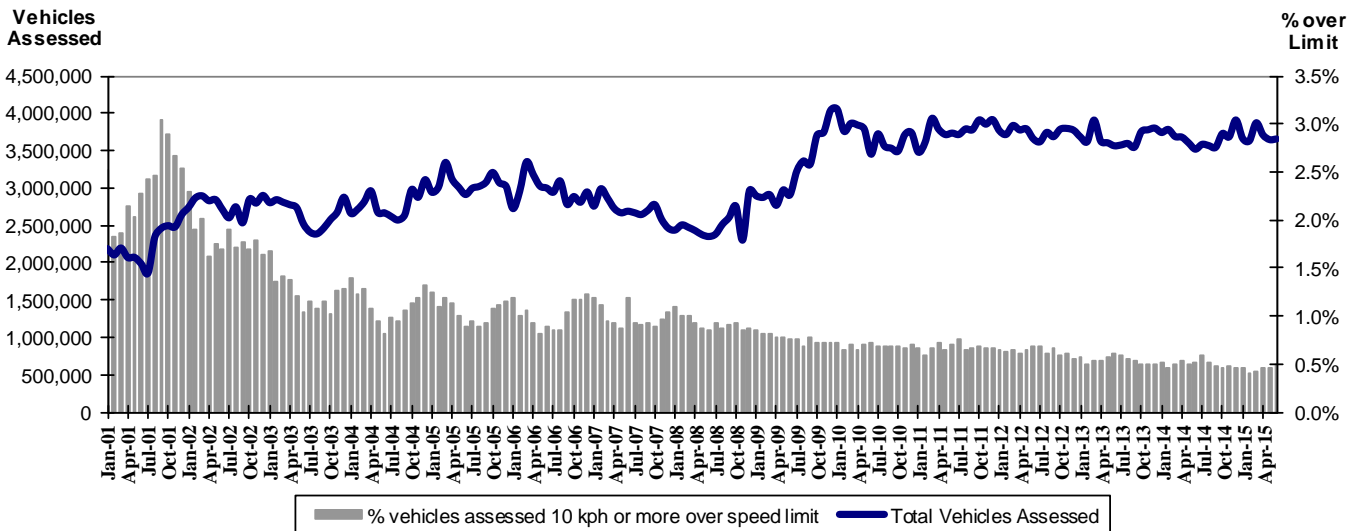
2014						2015					
Jul	Aug	Sep	Oct	Nov	Dec	Jan	Feb	Mar	Apr	May	Jun
42,640	34,202	32,625	35,422	32,416	28,732	37,982	31,250	31,144	33,790	30,434	33,386

Excessive Speed Infringements (ESI) Issued from Mobile Cameras (monthly totals)

Monthly Average = 308

2014						2015					
Jul	Aug	Sep	Oct	Nov	Dec	Jan	Feb	Mar	Apr	May	Jun
252	366	316	390	317	292	334	287	258	311	270	303

Notes: An ESI is defined as 25km/h over the speed limit except in a 110km/h zone where it is 20km/h over the limit.



Mobile Safety Cameras – Vehicles assessed and percentage of vehicles assessed 10km/h or more over speed limit per month

## Explanations and References

Hi-AlcTime is those times of the day and week (*shaded* in the table below) when casualty crashes are ten times more likely to involve alcohol than casualty crashes at other (Lo-AlcTime) times.

	12am - 6am	6am - 8am	8am - 10am	10am - 2pm	2pm - 4pm	4pm - 6pm	6pm - 12pm
Monday							
Tuesday							
Wednesday							
Thursday							
Friday							
Saturday							
Sunday							

Police Service Areas align with Local Government Areas. Most Police Service Areas are equivalent to a single Local Government Area, while the remainder comprise two or three Local Government Areas.

Police Service Area	Local Government Area(s)	Police Service Area	Local Government Area(s)
BALLARAT	BALLARAT, PYRENEES	MAROONDAH	MAROONDAH
BANYULE	BANYULE	MELBOURNE	MELBOURNE
BASS COAST	BASS COAST, SOUTH GIPPSLAND	MELTON	MELTON
BAW BAW	BAWBAW	MILDURA	MILDURA
BENALLA	BENALLA, MANSFIELD, MURRINDINDI	MITCHELL	MITCHELL, STRATHBOGIE
BENDIGO	GREATER BENDIGO	MONASH	MONASH
BOROONDARA	BOROONDARA	MOONEE VALLEY	MOONEE VALLEY
BRIMBANK	BRIMBANK	MOORABOOL	GOLDEN PLAINS, HEPBURN, MOORABOOL
CAMPASPE	CAMPASPE	MORELAND	MORELAND
CARDINIA	CARDINIA	MORNINGTON PENINSULA	MORNINGTON PENINSULA
CASEY	CASEY	NILLUMBIK	NILLUMBIK
CENTRAL GOLDFIELDS	CENTRAL GOLDFIELDS, LODDON	NORTHERN GRAMPIANS	ARARAT, NORTHERN GRAMPIANS, YARRIAMIACK
GREATER DANDENONG	GREATER DANDENONG	PORT PHILLIP	PORT PHILLIP
DAREBIN	DAREBIN	SHEPPARTON	GREATER SHEPPARTON
EAST GIPPSLAND	EAST GIPPSLAND	SOUTHERN GRAMPIANS	GLENELG, SOUTHERN GRAMPIANS
FRANKSTON	FRANKSTON	STONNINGTON	STONNINGTON
GEELONG	GREATER GEELONG, QUEENSCLIFF	SURFCOAST	SURFCOAST, COLAC OTWAY
GLENEIRA	GLENEIRA, BAYSIDE	SWANHILL	BULOKE, GANNAWARRA, SWAN HILL
HOBSONS BAY	HOBSONSBAY	WANGARATTA	ALPINE, MOIRA, WANGARATTA
HORSHAM	HINDMARSH, HORSHAM, WESTWIMMERA	WARRNAMBOOL	CORANGAMITE, MOYNE, WARRNAMBOOL
HUME	HUME	WELLINGTON	WELLINGTON
KINGSTON	KINGSTON	WHITEHORSE	WHITEHORSE
KNOX	KNOX	WHITTLESEA	WHITTLESEA
LATROBE	LATROBE	WODONGA	INDIGO, TOWONG, WODONGA
MACEDON RANGES	MOUNT ALEXANDER, MACEDON RANGES	WYNDHAM	WYNDHAM
MANNINGHAM	MANNINGHAM	YARRA	YARRA
MARIBYRNONG	MARIBYRNONG	YARRA RANGES	YARRA RANGES



## Useful Internet Sites

### TAC Sites

- TAC Safety (Road Safety) [www.tacsafety.com.au](http://www.tacsafety.com.au)
- TAC How safe is your car [www.howsafeisyourcar.com.au](http://www.howsafeisyourcar.com.au)
- TAC Learners Log [www.learnerslog.com.au](http://www.learnerslog.com.au)
- TAC Motorcycle Safety Website [www.spokes.com.au](http://www.spokes.com.au)
- TAC Corporate site [www.tac.vic.gov.au](http://www.tac.vic.gov.au)

### Victorian Sites:

- VicRoads [www.vicroads.vic.gov.au](http://www.vicroads.vic.gov.au)
- Victoria Police [www.police.vic.gov.au](http://www.police.vic.gov.au)
- Parliamentary Road Safety Committee [www.parliament.vic.gov.au/rsc/](http://www.parliament.vic.gov.au/rsc/)
- ARRB Transport Research [www.arrb.com.au](http://www.arrb.com.au)
- RACV [www.racv.com.au](http://www.racv.com.au)
- Monash University Accident Research Centre [www.monash.edu.au/muarc](http://www.monash.edu.au/muarc)
- Roadsafe [www.roadsafe.org.au](http://www.roadsafe.org.au)
- Cameras Save Lives [www.camerassavelives.vic.gov.au](http://www.camerassavelives.vic.gov.au)

### National and Interstate Sites:

- Australian Transport Safety Bureau [www.atsb.gov.au](http://www.atsb.gov.au)
- Roads and Traffic Authority (NSW) [www.rta.nsw.gov.au](http://www.rta.nsw.gov.au)
- Queensland Transport - Road Safety [transport.qld.gov.au/Home/Safety/Road](http://transport.qld.gov.au/Home/Safety/Road)
- Department of Transport (SA) [www.transport.sa.gov.au/index.htm](http://www.transport.sa.gov.au/index.htm)
- Main Roads Western Australia - Road Safety [www.mrwa.wa.gov.au](http://www.mrwa.wa.gov.au)

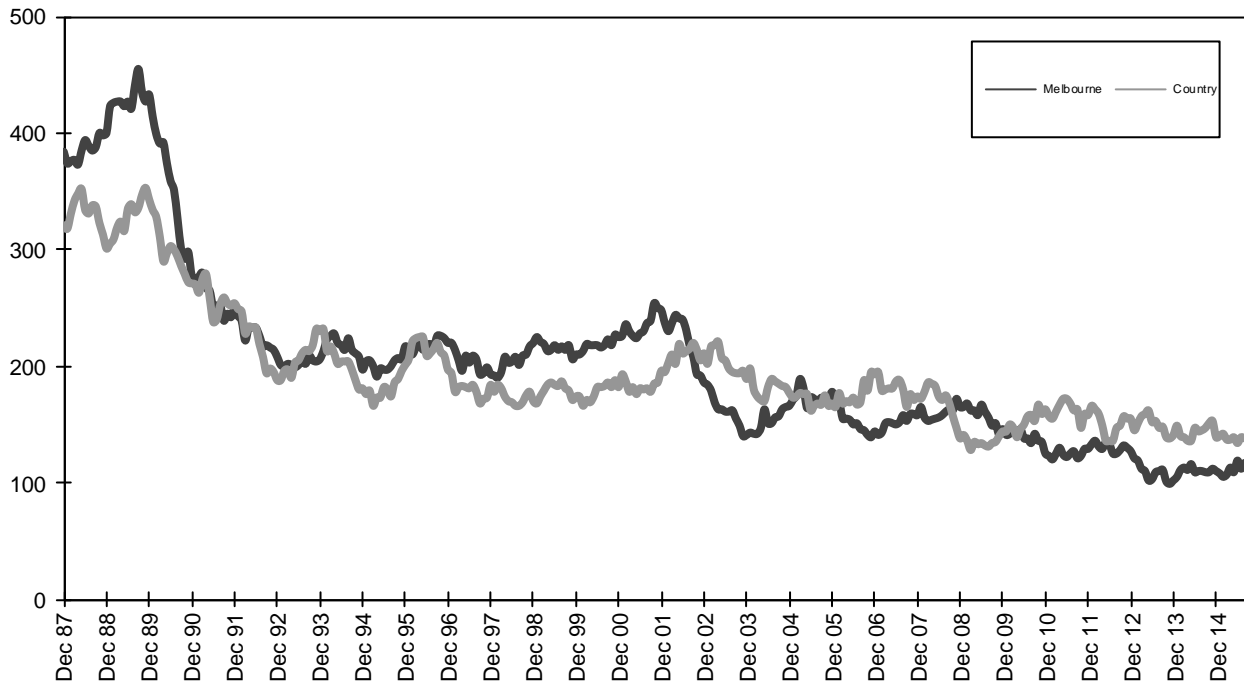
### International Sites:

- National Highway Traffic Safety Admin (USA) [www.nhtsa.dot.gov](http://www.nhtsa.dot.gov)
- Swedish Road and Transport Institute (VTI) [www.vti.se](http://www.vti.se)
- SWOV Institute for Road Safety Research [www.swov.nl](http://www.swov.nl)

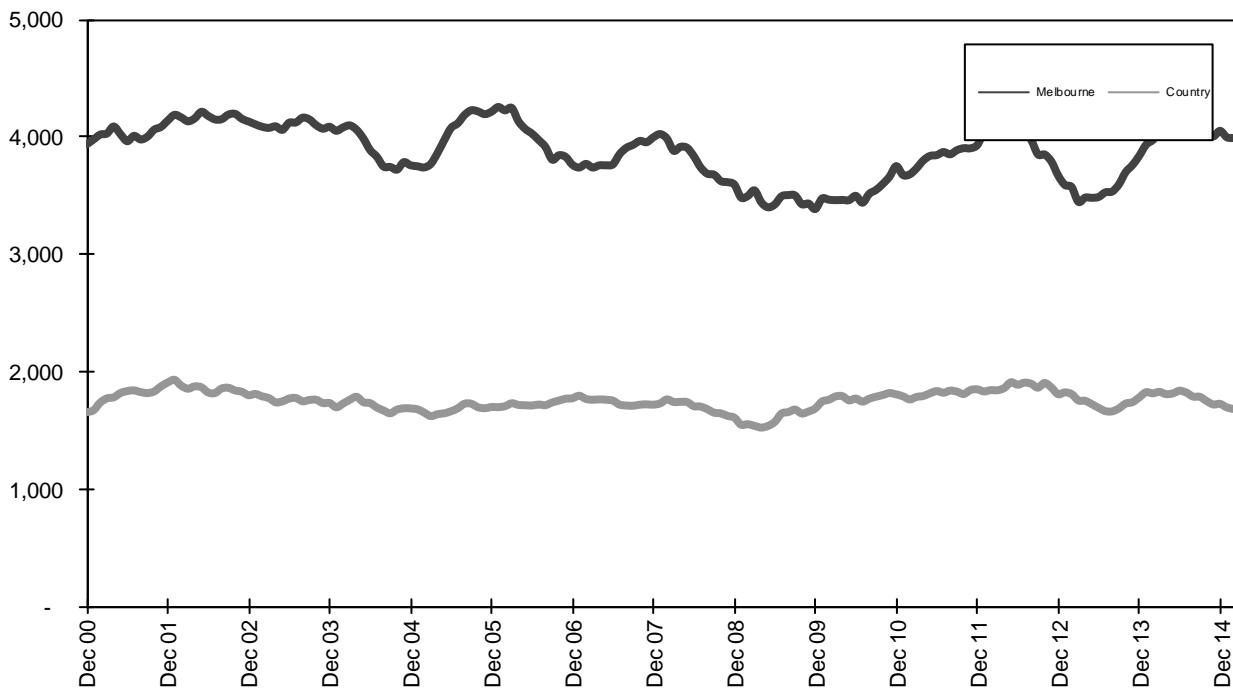
### Related Sites:

- Australian Drug Foundation [www.adf.org.au](http://www.adf.org.au)
- Amy Gillett Foundation [www.amygillett.org.au](http://www.amygillett.org.au)

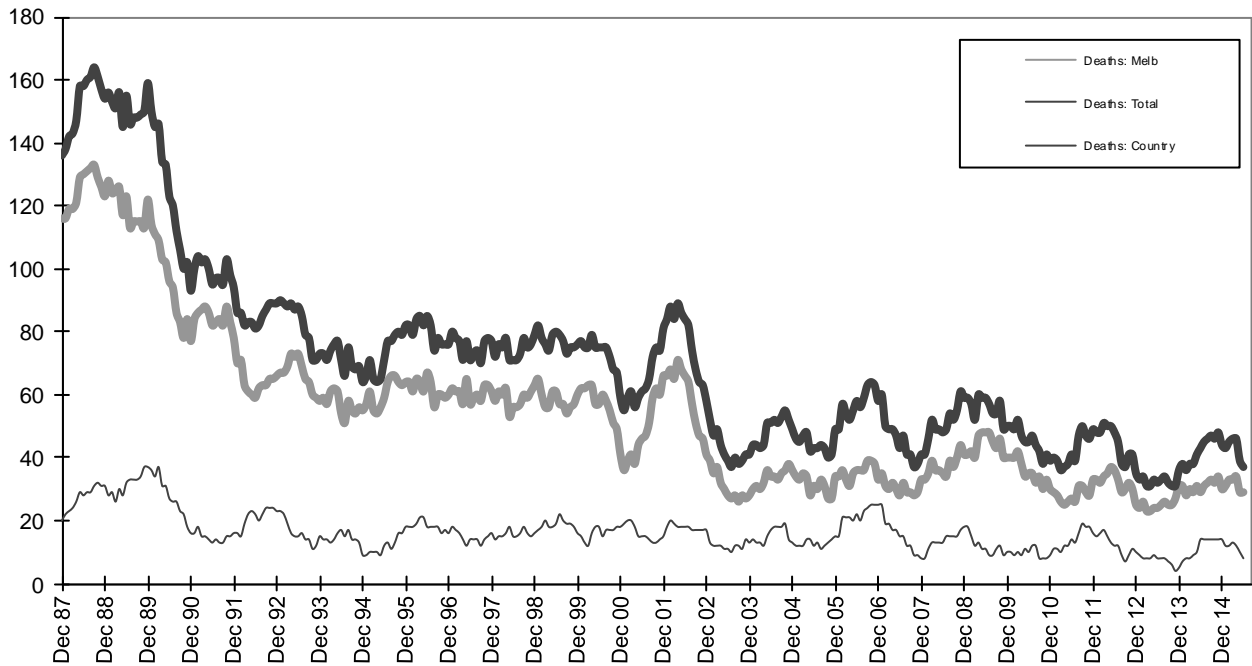
Figures



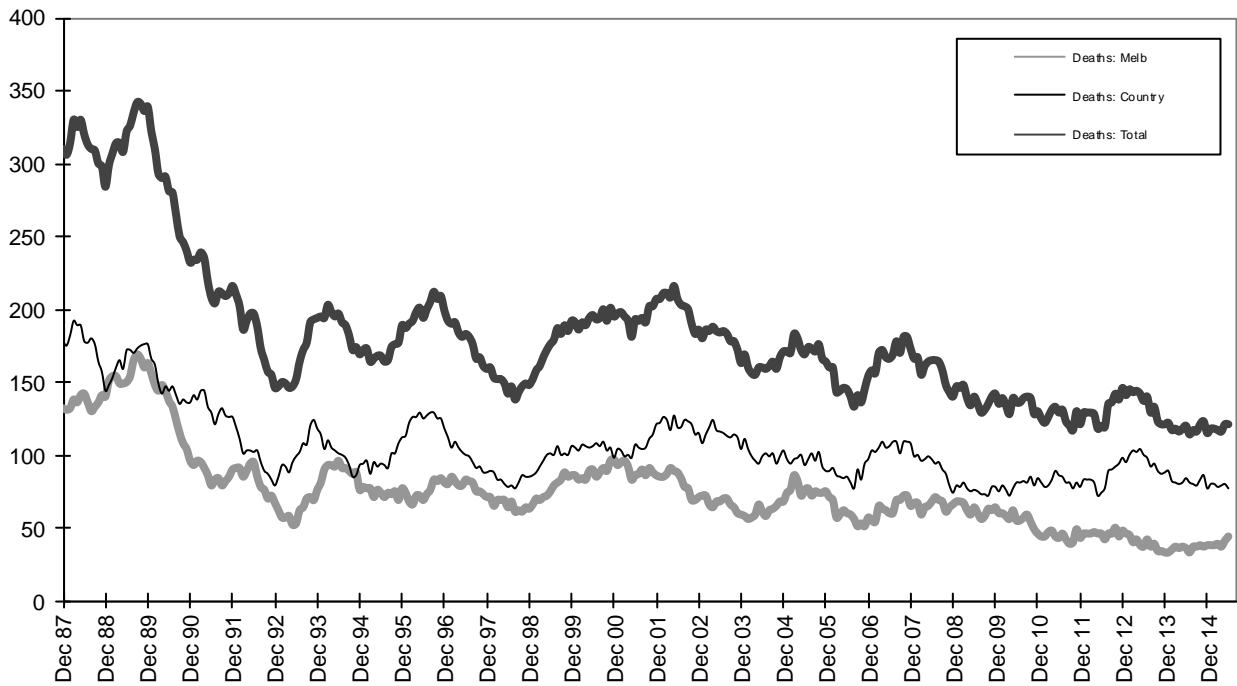
Graph 1a - Melbourne/country fatalities



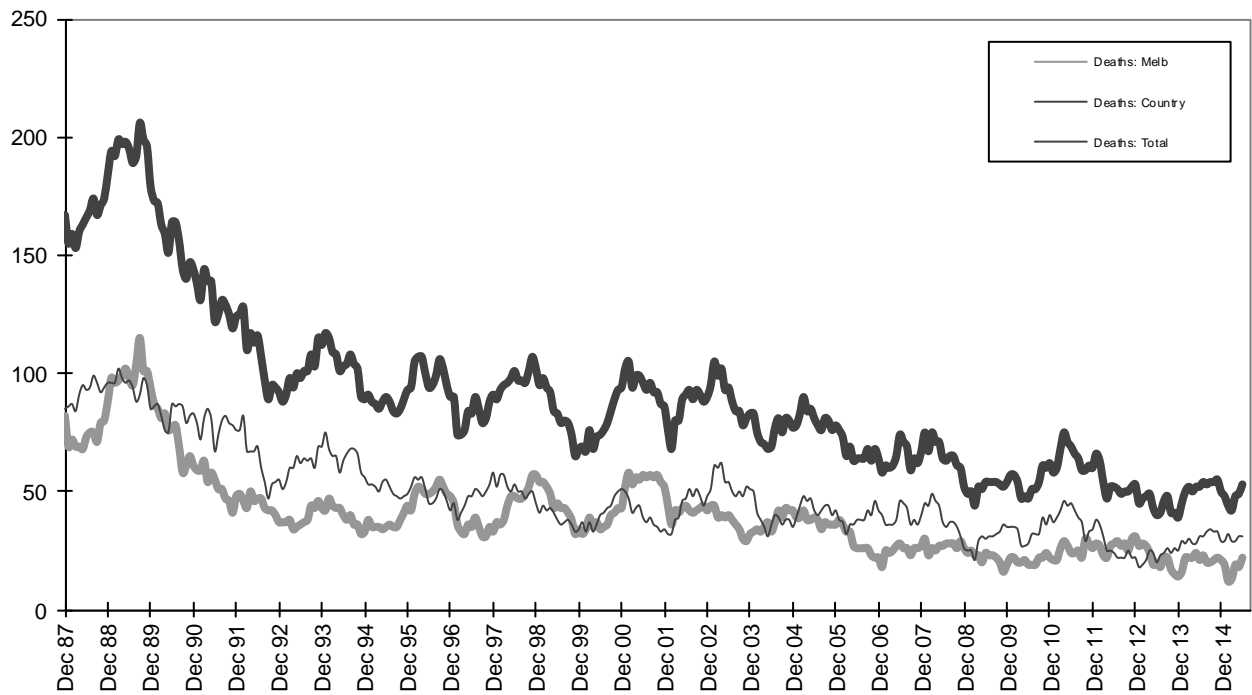
Graph 1b - Melbourne/country Claims involving an acute hospital admission



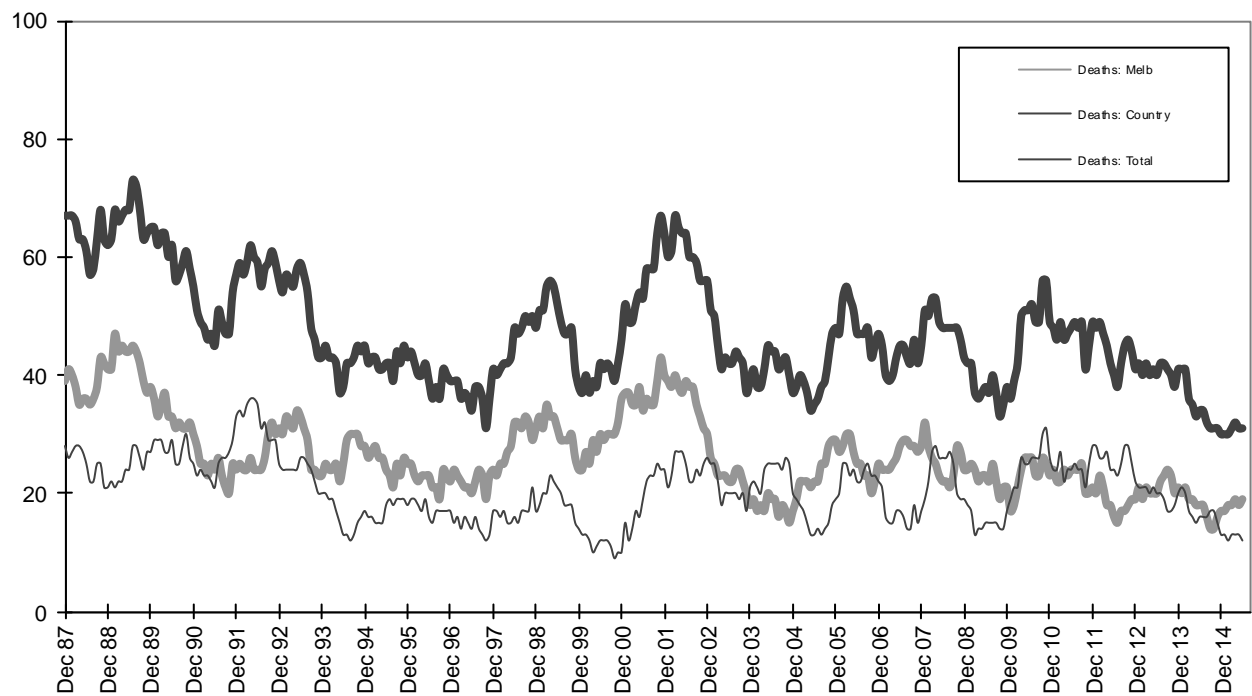
Graph 2a - Pedestrian fatalities (Melbourne/country)



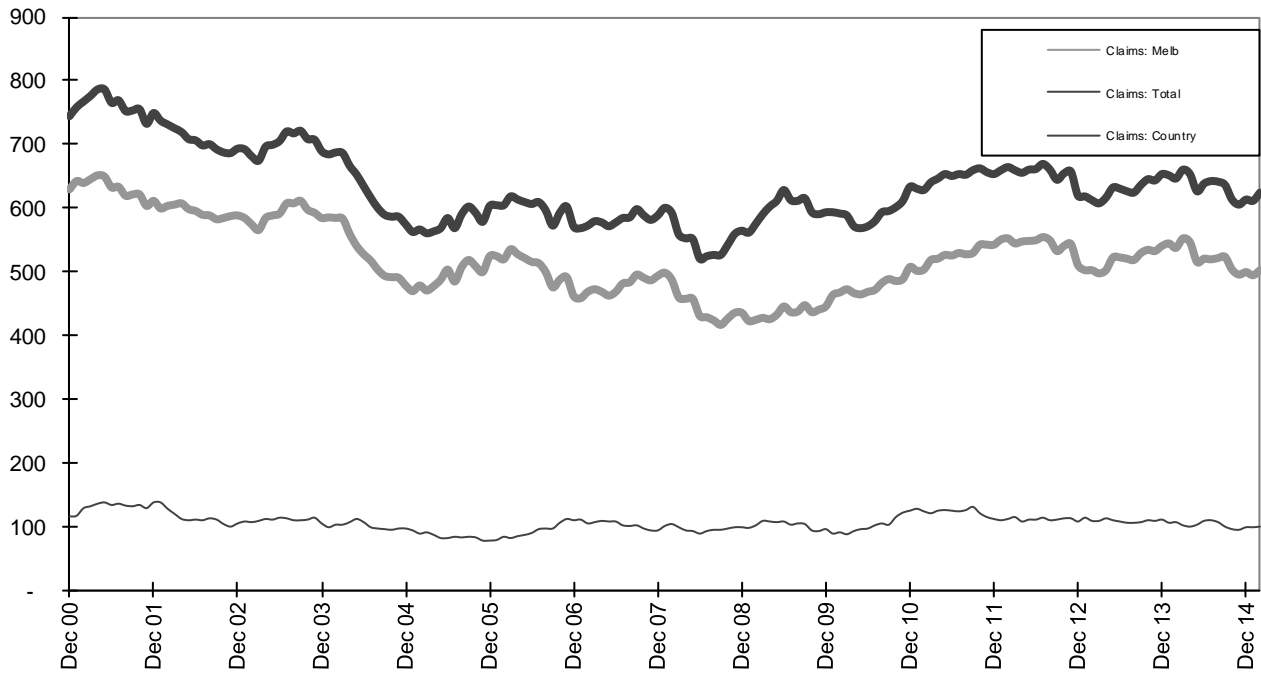
Graph 2b - Driver fatalities (Melbourne/country)



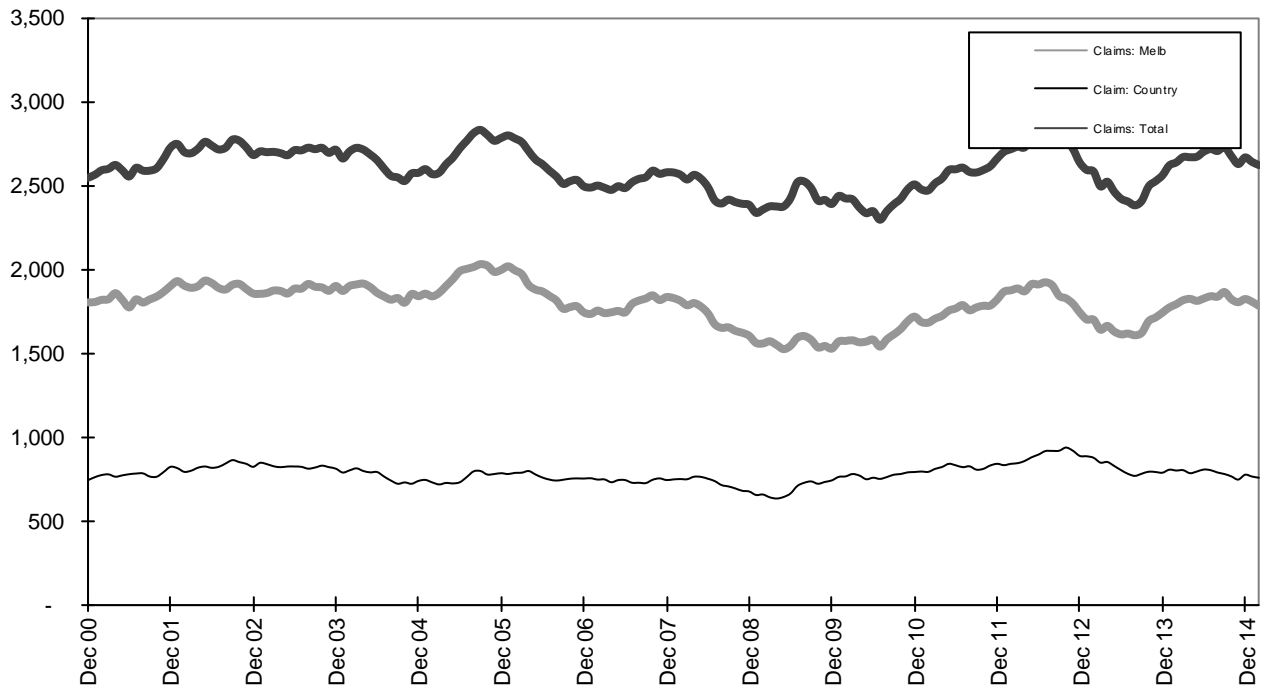
Graph 2c - Passenger fatalities (Melbourne/country)



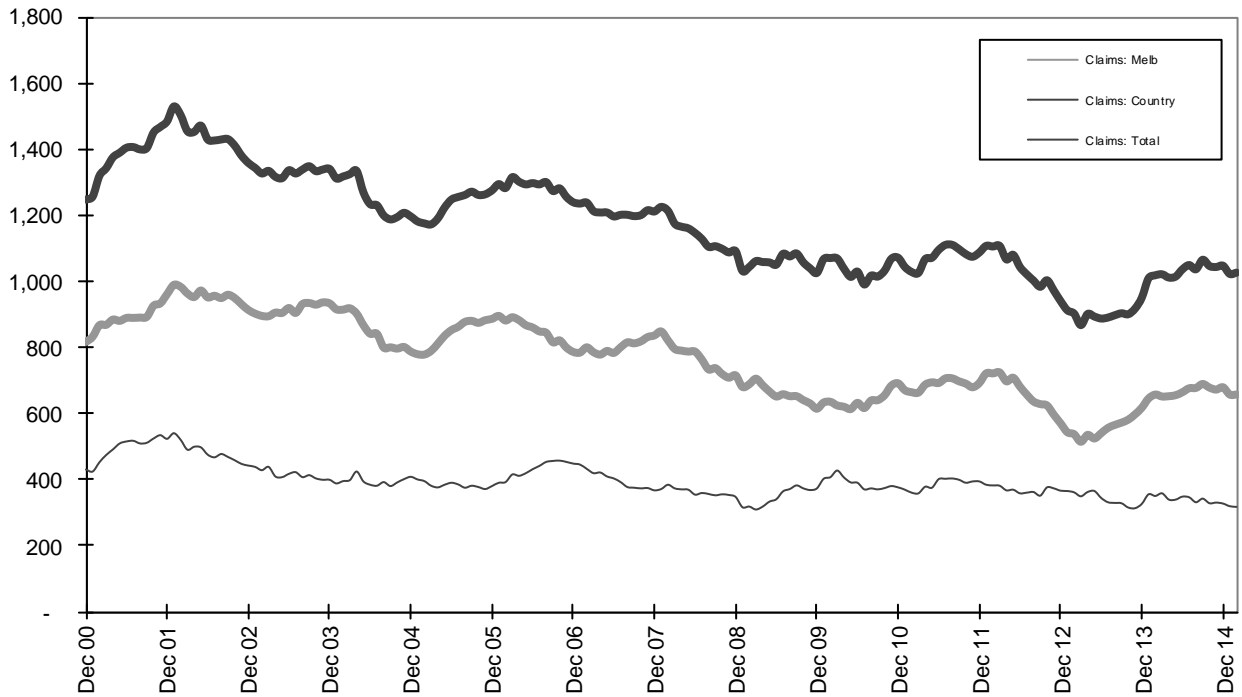
Graph 2d - Motorcyclist fatalities (Melbourne/country)



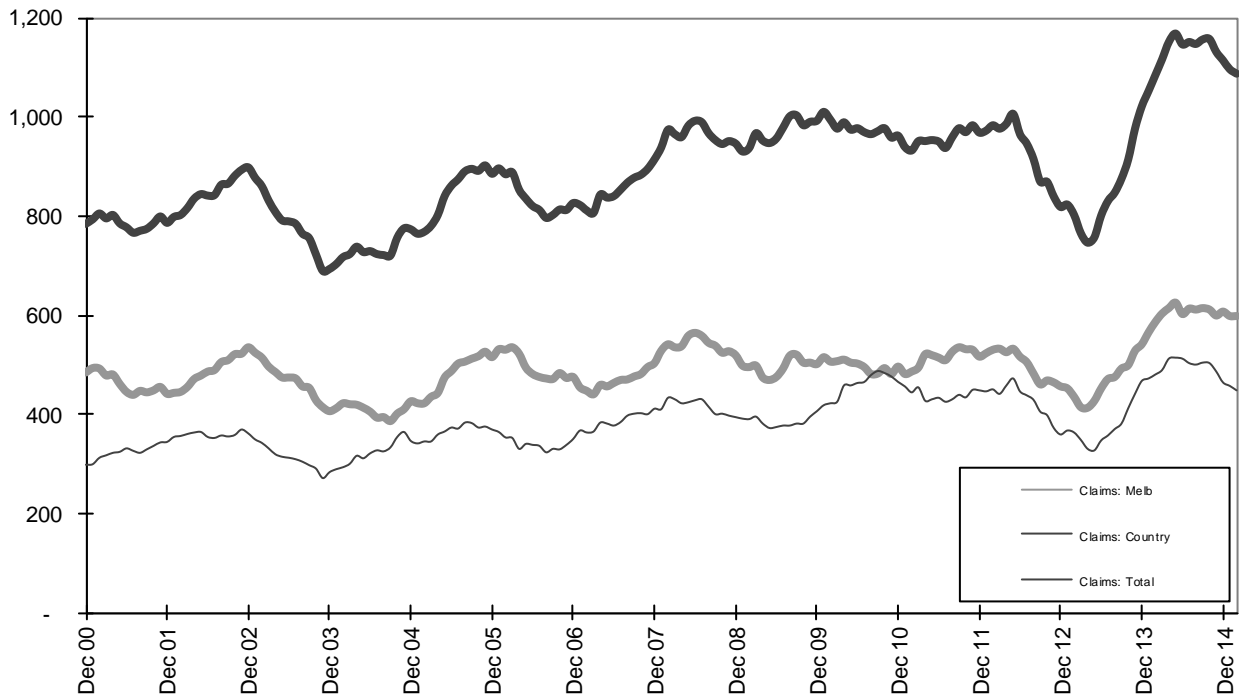
Graph 3a – Pedestrian Claims involving an acute hospital admission (Melbourne/country)



Graph 3b – Driver Claims involving an acute hospital admission (Melbourne/country)



Graph 3c - Passenger Claims involving an acute hospital admission (Melbourne/country)



Graph 3d - Motorcyclist Claims involving an acute hospital admission (Melbourne/country)