



ROAD SAFETY STATISTICAL SUMMARY FEBRUARY 2010



TRANSPORT
ACCIDENT
COMMISSION

60 Brougham Street
Geelong Vic 3220
PO Box 742
Geelong Vic 3220
Ausdoc DX 216079 Geelong

Telephone 1300 654 329
STD Toll Free 1800 332 556
Fax: 03 9656 9300
www.tac.vic.gov.au
ABN 22 033 947 623



Contents

Status Report	3
Road Toll (updated snapshot)	
Overview	
Tables	4-7
Fatalities (rolling 12 month)	
Serious Injuries (rolling 12 month)	
Overview	
Sex	
Roaduser	
Location	
Age Group	
Alctime	
Police District	
Accident Type	
Victorian Road Deaths – monthly totals since 1951	8
Fatalities by Week (2004 to 2009)	9
Alcohol Related Deaths	10
The National Picture	11
Police Enforcement	12
Explanations and References	13
Alcohol times (“Alctime”) explained	
Useful internet sites	
Graphs (12 month moving totals)	14-18

Status Report

Road Toll (year to date, accurate as at midnight 28 February 2010)

- The road toll in 2010 stands at 53, 9% more than at the same stage in 2009 (49).
- 27 people died in January and 26 in February on Victorian roads. This compares to 31 in January 2009 and 18 in February 2009.

* Due to a change in coding of accident injury severity following the introduction of the new crash data system by Victoria Police, it is not possible to compare serious injury data from 2006 onwards with previous years' data, as a discontinuity in the data series has been introduced with the introduction of a new reporting system on 1 January 2006.

Category	2010	2009	2008	2010 v 2009	2010 v 2008	5 Year Av
Casualties (Rolling 12 Month Total)						
Fatal (to February)	294	304	334	-10	(-3%)	320
per 10,000 veh	0.73	0.77	0.87	-0.04	(-5%)	0.85
per 100,000 pop	5.40	5.72	6.40	-0.32	(-6%)	6.25

Category	2010	2009	2008	2010 v 2009	2010 v 2008	5 Year Av
Accidents (Rolling 12 Month Total)						
Fatal (to February)	269	278	291	-9	(-3%)	290
per 10,000 veh	0.66	0.70	0.75	-0.04	(-6%)	0.77
per 100,000 pop	4.94	5.23	5.57	-0.29	(-6%)	5.65

Category	2009	2008	2007	2009 v 2008	2009 v 2007	3 Year Av
Casualties (Rolling 12 Month Total)						
*Serious (to August)	6,547	7,551	7,669	-1,004	(-13%)	7,256
per 10,000 veh	16.4	19.3	20.1	-2.9	(-15%)	18.1
per 100,000 pop	121.6	143.4	148.4	-21.8	(-15%)	134.8

Category	2009	2008	2007	2009 v 2008	2009 v 2007	3 Year Av
Accidents (Rolling 12 Month Total)						
*Serious (to August)	5,469	6,240	6,203	-771	(-12%)	5,971
per 10,000 veh	13.7	15.9	16.3	-2.2	(-14%)	14.9
per 100,000 pop	101.6	118.5	120.0	-16.9	(-14%)	110.9

Note: Data is subject to revision as additional information about known accidents is received, and as new accident reports are received and processed.

Fatalities: 12 months to February

Category	2010	2009	2008	2010 v 2009	2010 v 2008	5 Year Av
Overview						
Fatalities	294	304	334	-10 (-3%)	-40 (-12%)	320
Accidents	269	278	291	-9 (-3%)	-22 (-8%)	290
Sex						
Male	209	203	240	6 (3%)	-31 (-13%)	228
Female	84	101	94	-17 (-17%)	-10 (-11%)	92
Roaduser						
Bicyclist	8	9	4	-1 (-11%)	4 (100%)	8
Driver	141	146	167	-5 (-3%)	-26 (-16%)	154
Motorcyclist	39	42	50	-3 (-7%)	-11 (-22%)	45
Passenger	57	50	67	7 (14%)	-10 (-15%)	62
Pedestrian	49	57	46	-8 (-14%)	3 (7%)	52
Location						
Melbourne	143	169	156	-26 (-15%)	-13 (-8%)	156
Rural Victoria	151	135	178	16 (12%)	-27 (-15%)	164
Agegroup						
0-4	5	4	5	1 (25%)	0 (0%)	4
5-15	11	6	10	5 (83%)	1 (10%)	9
16-17	6	13	9	-7 (-54%)	-3 (-33%)	11
18-20	30	36	32	-6 (-17%)	-2 (-6%)	34
21-25	25	43	43	-18 (-42%)	-18 (-42%)	40
26-29	22	19	27	3 (16%)	-5 (-19%)	25
30-39	47	44	56	3 (7%)	-9 (-16%)	53
40-49	36	48	38	-12 (-25%)	-2 (-5%)	42
50-59	31	30	46	1 (3%)	-15 (-33%)	33
60-69	28	17	27	11 (65%)	1 (4%)	23
70+	53	44	41	9 (20%)	12 (29%)	46
Unknown	0	0	0	0	0	0
Altime						
High (Melb)	84	77	79	7 (9%)	5 (6%)	84
High (Rural)	65	67	72	-2 (-3%)	-7 (-10%)	79
High (Vic)	149	144	151	5 (3%)	-2 (-1%)	163
Low (Melb)	59	92	77	-33 (-36%)	-18 (-23%)	72
Low (Rural)	86	68	106	18 (26%)	-20 (-19%)	85
Low (Vic)	145	160	183	-15 (-9%)	-38 (-21%)	157
Unknown	0	0	0	0	0	0

Fatalities: 12 months to February

Category	2010	2009	2008	2010 v 2009	2010 v 2008	5 Year Av
Police Region and Division						
Region 1	18	26	31	-8	(-31%)	24
1-1 Melbourne	3	8	11	-5	(-63%)	6
1-2 Prahran	3	3	7	0	(0%)	5
1-3 Caulfield	6	5	6	1	(20%)	6
1-4 Moorabbin	6	10	7	-4	(-40%)	8
Region 2	70	63	68	7	(11%)	75
2-1 Altona North	14	15	28	-1	(-7%)	18
2-2 Geelong	19	17	6	2	(12%)	16
2-3 Ballarat	8	18	12	-10	(-56%)	15
2-4 Horsham	6	5	4	1	(20%)	7
2-5 Warrnambool	23	8	18	15	(188%)	19
Region 3	68	66	92	2	(3%)	73
3-1 Mill Park	16	12	7	4	(33%)	11
3-2 Broadmeadows	14	17	15	-3	(-18%)	15
3-3 Bendigo	19	13	21	6	(46%)	16
3-4 Shepparton	10	13	23	-3	(-23%)	17
3-5 Mildura	9	11	26	-2	(-18%)	14
Region 4	76	63	70	13	(21%)	70
4-1 Rosanna	9	8	4	1	(13%)	7
4-2 Nunawading	19	12	18	7	(58%)	14
4-3 Knox	16	21	19	-5	(-24%)	20
4-4 Seymour	16	18	18	-2	(-11%)	18
4-5 Wangaratta	16	4	11	12	(300%)	11
Region 5	62	86	73	-24	(-28%)	78
5-1 Frankston	11	23	15	-12	(-52%)	16
5-2 Dandenong	21	27	20	-6	(-22%)	26
5-3 Morwell	15	16	20	-1	(-6%)	19
5-4 Bairnsdale	15	20	18	-5	(-25%)	17
Accident Type						
Intersection						
Adjacent direction	18	23	27	-5	(-22%)	27
Opposing direction	6	6	11	0	(0%)	10
Other						
Head on	39	36	43	3	(8%)	41
Same direction	18	16	21	2	(13%)	18
Manoeuvre/o'taking	18	21	8	-3	(-14%)	16
On path	5	5	6	0	(0%)	6
Single vehicle	130	127	151	3	(2%)	136
Other (incl peds)	60	70	67	-10	(-14%)	66

Serious injuries: 12 months to August

Due to a change in coding of accident injury severity following the introduction of the new crash data system by Victoria Police, it is not possible to compare serious injury data from 2006 onwards with previous years' data, as a discontinuity in the data series has been introduced with the introduction of a new reporting system on 1 Jan 2006.

Category	2009	2008	2007	2009 v 2008	2009 v 2007	3 Year Av
Overview						
Casualties	6,547	7,551	7,669	-1,004 (-13%)	-1,122 (-15%)	7,256
Accidents	5,469	6,240	6,203	-771 (-12%)	-734 (-12%)	5,971
Sex						
Male	3,866	4,487	4,301	-621 (-14%)	-435 (-10%)	4,218
Female	2,629	3,019	3,253	-390 (-13%)	-624 (-19%)	2,967
Unknown	52	45	115	7 (16%)	-63 (-55%)	71
Roaduser						
Bicyclist	453	522	486	-69 (-13%)	-33 (-7%)	487
Driver	3,086	3,547	3,739	-461 (-13%)	-653 (-17%)	3,457
Motorcyclist	1,050	1,162	955	-112 (-10%)	95 (10%)	1,056
Passenger	1,277	1,557	1,708	-280 (-18%)	-431 (-25%)	1,514
Pedestrian	676	760	779	-84 (-11%)	-103 (-13%)	738
Unknown	5	3	2	2	3	3
Location						
Melbourne	4,479	5,403	5,420	-924 (-17%)	-941 (-17%)	5,101
Rural Victoria	2,017	2,072	2,189	-55 (-3%)	-172 (-8%)	2,093
Unknown	51	76	60	-25	-9	62
Agegroup						
0-4	57	63	80	-6 (-10%)	-23 (-29%)	67
5-15	263	335	392	-72 (-21%)	-129 (-33%)	330
16-17	188	224	263	-36 (-16%)	-75 (-29%)	225
18-20	738	847	865	-109 (-13%)	-127 (-15%)	817
21-25	865	1,019	1,114	-154 (-15%)	-249 (-22%)	999
26-29	538	653	619	-115 (-18%)	-81 (-13%)	603
30-39	1,128	1,338	1,283	-210 (-16%)	-155 (-12%)	1,250
40-49	969	1,035	1,065	-66 (-6%)	-96 (-9%)	1,023
50-59	668	795	779	-127 (-16%)	-111 (-14%)	747
60-69	471	532	462	-61 (-11%)	9 (2%)	488
70+	573	600	565	-27 (-5%)	8 (1%)	579
Unknown	89	110	182	-21 (-19%)	-93 (-51%)	127
Altime						
High (Melb)	2,153	2,507	2,568	-354 (-14%)	-415 (-16%)	2,409
High (Rural)	925	954	979	-29 (-3%)	-54 (-6%)	953
High (Vic)	3,078	3,461	3,547	-383 (-11%)	-469 (-13%)	3,362
Low (Melb)	2,326	2,896	2,852	-570 (-20%)	-526 (-18%)	2,691
Low (Rural)	1,092	1,118	1,210	-26 (-2%)	-118 (-10%)	1,140
Low (Vic)	3,418	4,014	4,062	-596 (-15%)	-644 (-16%)	3,831
Unknown	51	76	60	-25	-9	62

Serious injuries: 12 months to August

Due to a change in coding of accident injury severity following the introduction of the new crash data system by Victoria Police, it is not possible to compare serious injury data from 2006 onwards with previous years' data, as a discontinuity in the data series has been introduced with the introduction of a new reporting system on 1 Jan 2006.

Category	2009	2008	2007	2009 v 2008	2009 v 2007	3 Year Av
Police Region and Division						
Region 1	1,050	1,341	1,220	-291	(-22%)	1,204
1-1 Melbourne	338	395	360	-57	(-14%)	364
1-2 Prahran	232	267	259	-35	(-13%)	253
1-3 Caulfield	257	339	288	-82	(-24%)	295
1-4 Moorabbin	223	340	313	-117	(-34%)	292
Region 2	1,424	1,532	1,537	-108	(-7%)	1,498
2-1 Altona North	536	590	533	-54	(-9%)	553
2-2 Geelong	417	455	469	-38	(-8%)	447
2-3 Ballarat	265	249	293	16	(6%)	269
2-4 Horsham	74	84	92	-10	(-12%)	83
2-5 Warrnambool	132	154	150	-22	(-14%)	145
Region 3	1,266	1,351	1,394	-85	(-6%)	1,337
3-1 Mill Park	255	274	322	-19	(-7%)	284
3-2 Broadmeadows	478	498	518	-20	(-4%)	498
3-3 Bendigo	202	248	191	-46	(-19%)	214
3-4 Shepparton	220	189	203	31	(16%)	204
3-5 Mildura	111	142	160	-31	(-22%)	138
Region 4	1,474	1,620	1,797	-146	(-9%)	1,630
4-1 Rosanna	203	228	254	-25	(-11%)	228
4-2 Nunawading	501	581	649	-80	(-14%)	577
4-3 Knox	415	502	551	-87	(-17%)	489
4-4 Seymour	196	164	196	32	(20%)	185
4-5 Wangaratta	159	145	147	14	(10%)	150
Region 5	1,282	1,631	1,661	-349	(-21%)	1,525
5-1 Frankston	340	431	389	-91	(-21%)	387
5-2 Dandenong	569	769	823	-200	(-26%)	720
5-3 Morwell	222	270	299	-48	(-18%)	264
5-4 Bairnsdale	151	161	150	-10	(-6%)	154
Unknown	51	76	60	-25		62
Accident Type						
Intersection						
Adjacent direction	976	1,125	1,241	-149	(-13%)	1,114
Opposing direction	597	772	749	-175	(-23%)	706
Other						
Head on	383	448	458	-65	(-15%)	430
Same direction	933	1,106	1,194	-173	(-16%)	1,078
Manoeuvre/o'taking	433	434	476	-1	(-0%)	448
On path	326	344	349	-18	(-5%)	340
Single vehicle	2,153	2,473	2,361	-320	(-13%)	2,329
Other (incl peds)	746	849	841	-103	(-12%)	812

Victorian Road Deaths: monthly totals since 1951

Year	Jan	Feb	Mar	Apr	May	Jun	Jul	Aug	Sep	Oct	Nov	Dec	Totals
1951							61	59	52	38	29	41	
1952	45	40	54	61	54	69	67	55	44	44	31	20	584
1953	23	28	54	58	49	42	50	37	44	27	36	32	480
1954	44	42	28	60	55	36	63	33	25	52	30	41	509
1955	44	36	45	55	48	56	64	44	44	32	40	40	548
1956	34	48	51	67	53	65	71	47	39	39	44	48	606
1957	50	41	46	58	52	54	57	53	51	46	32	49	589
1958	50	38	42	58	54	41	54	53	57	40	57	52	596
1959	50	57	61	50	75	55	42	48	52	55	63	63	671
1960	49	53	57	76	70	70	67	62	61	77	52	66	760
1961	63	57	68	74	58	68	78	82	59	62	60	65	794
1962	65	41	76	78	72	80	70	77	62	53	64	70	808
1963	67	56	65	85	66	68	77	55	55	58	61	67	780
1964	73	71	78	71	83	89	80	89	67	66	62	75	904
1965	63	64	86	88	80	87	79	69	81	77	68	87	929
1966	75	59	75	103	74	86	87	80	75	66	90	85	955
1967	61	79	91	97	81	71	59	67	70	68	60	83	887
1968	70	78	86	78	73	76	73	77	72	80	81	105	949
1969	79	68	79	87	86	77	87	83	87	83	94	101	1,011
1970	85	84	106	80	87	88	110	106	78	95	68	74	1,061
1971	83	75	77	68	76	86	85	72	78	73	74	76	923
1972	61	62	75	82	75	71	98	85	83	62	80	81	915
1973	75	75	95	85	64	66	61	85	89	88	66	86	935
1974	56	62	81	60	70	73	67	62	53	70	80	72	806
1975	67	65	87	73	97	94	57	75	69	66	71	89	910
1976	79	78	88	78	69	79	60	70	82	78	77	100	938
1977	65	71	89	79	65	79	70	91	68	74	96	107	954
1978	75	54	95	63	64	69	68	77	65	84	83	72	869
1979	63	60	86	75	45	64	66	75	69	79	72	93	847
1980	48	55	66	59	47	56	60	53	45	58	61	49	657
1981	69	60	58	61	74	65	61	63	68	71	59	57	766
1982	55	53	59	59	67	45	47	71	53	69	65	66	709
1983	42	59	53	63	62	61	65	51	59	43	54	52	664
1984	65	48	58	50	56	48	46	50	71	53	55	58	658
1985	56	47	50	65	75	50	51	50	58	61	56	64	683
1986	56	50	70	69	59	53	42	54	54	52	59	51	669
1987	62	43	57	52	63	59	62	49	62	61	55	80	705
1988	49	58	69	54	79	50	54	52	64	59	43	70	701
1989	76	65	80	59	67	73	52	65	82	50	41	66	776
1990	48	44	55	39	56	64	41	34	48	35	40	44	548
1991	45	39	70	30	34	29	44	47	41	36	35	53	503
1992	34	33	34	47	33	29	23	27	28	38	30	40	396
1993	27	40	37	39	44	33	33	27	34	39	43	40	436
1994	36	31	44	35	27	33	29	37	17	27	32	30	378
1995	38	35	26	33	34	41	27	34	34	32	38	46	418
1996	40	47	35	38	28	29	30	35	49	24	33	30	418
1997	36	25	30	30	40	22	39	26	26	29	39	35	377
1998	29	29	32	36	31	22	40	19	37	36	49	30	390
1999	32	31	35	35	34	24	35	26	28	38	29	37	384
2000	32	26	46	32	39	32	33	29	36	29	44	29	407
2001	44	30	31	32	31	41	34	37	35	51	41	37	444
2002	32	31	45	31	45	32	27	25	31	30	31	37	397
2003	21	41	36	28	31	28	20	23	23	24	24	31	330
2004	32	22	30	30	46	28	27	26	22	28	25	27	343
2005	33	27	47	21	29	23	30	25	25	33	17	36	346
2006	24	37	23	23	27	23	25	22	43	20	31	39	337
2007	23	23	32	25	26	28	28	20	23	37	26	41	332
2008	28	20	37	25	25	20	27	27	18	25	26	25	303
2009	31	18	23	32	19	30	19	21	14	28	21	34	290
2010	27	26											53
Ave	51	48	58	57	56	54	54	52	52	52	51	57	643
Max	85	84	106	103	97	94	110	106	89	95	96	107	1,061
Min	21	18	23	21	19	20	19	19	14	20	17	20	303

Fatalities by Week (2005 to 2010)

Week Ending	2005	2006	2007	2008	2009	2010	Cumulative 2009	% Change 2009-2008	12 Month Moving Total
3-Jan	4	4	3	3	3	1	1	-67%	288
10-Jan	6	2	2	6	11	7	8	-43%	284
17-Jan	3	4	7	7	6	5	13	-35%	283
24-Jan	13	11	5	2	2	5	18	-18%	286
31-Jan	7	3	6	10	9	9	27	-13%	286
7-Feb	6	5	6	3	4	8	35	0%	290
14-Feb	3	6	4	4	8	4	39	-9%	286
21-Feb	7	17	12	4	2	10	49	9%	294
28-Feb	11	9	1	9	4	4	53	8%	294
7-Mar	6	2	13	8	2	5	58	14%	297
14-Mar	5	6	5	8	7	7	65	12%	297
21-Mar	15	3	3	9	2	4	69	15%	299
28-Mar	14	10	9	9	8	8	77	13%	299
4-Apr	9	3	4	8	7				
11-Apr	3	4	10	4	6				
18-Apr	7	3	5	5	8				
25-Apr	5	6	4	8	11				
2-May	7	9	6	6	4				
9-May	6	11	4	4	7				
16-May	12	3	7	7	3				
23-May	5	6	5	5	1				
30-May	3	7	7	6	4				
6-Jun	2	6	15	3	6				
13-Jun	8	4	2	5	7				
20-Jun	8	7	4	5	8				
27-Jun	3	5	7	6	6				
4-Jul	8	1	3	5	8				
11-Jul	6	8	10	10	7				
18-Jul	6	7	6	2	2				
25-Jul	7	6	5	4	7				
1-Aug	7	4	5	9	3				
8-Aug	7	7	2	6	5				
15-Aug	6	5	2	6	7				
22-Aug	2	4	7	5	4				
29-Aug	7	5	9	6	1				
5-Sep	3	2	2	4	4				
12-Sep	4	8	7	5	2				
19-Sep	4	11	5	5	6				
26-Sep	13	18	8	5	2				
3-Oct	7	5	4	9	2				
10-Oct	6	9	12	5	6				
17-Oct	11	5	6	4	7				
24-Oct	4	4	11	5	7				
31-Oct	7	2	5	3	9				
7-Nov	6	9	5	4	4				
14-Nov	6	3	8	7	8				
21-Nov	2	10	4	10	5				
28-Nov	3	7	7	3	3				
5-Dec	7	16	6	4	6				
12-Dec	6	3	16	9	4				
19-Dec	5	7	5	4	11				
26-Dec	13	11	10	9	10				
31-Dec	5	4	6	1	4				
Total	346	337	332	303	290	77			

Alcohol Related Deaths

BAC Fatalities (12 months to December 2009)

- 25% of killed and tested drivers and riders had a BAC at 0.05 g/100ml or over (42 of 168) compared to 28% over the previous 12 month period (50 of 177).
- In Melbourne, 19 drivers/riders killed and tested were at or over 0.05, with 47% of these having a BAC in excess of 0.15 g/100ml. Across rural Victoria, 23 drivers/riders killed and tested were at or over 0.05, with 52% of these having a BAC over 0.15.
- Of the 42 drivers and riders killed and tested at or over 0.05, 17% (7) were aged under 21, 31% (13) were aged 21-29, 21% (9) were aged 30-39 and 31% (13) were aged 40 years and over. In the previous year (50 killed) the corresponding figures were 18% (9), 34% (17), 20% (10) and 28% (14), respectively.

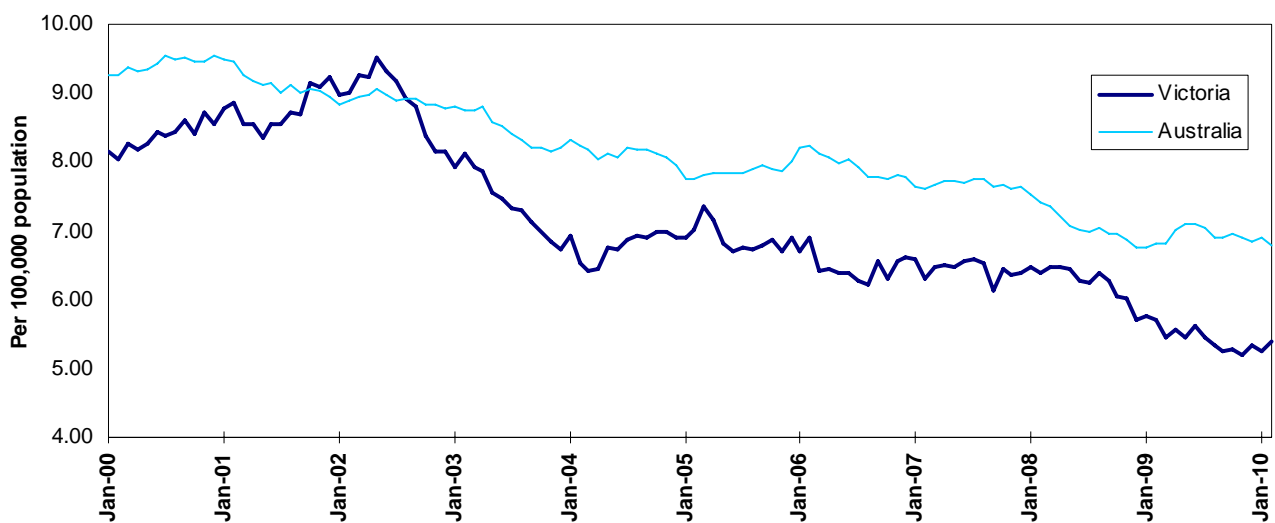
Category	2009	2008	2007	2009 v 2008	2009 v 2007	5 Year Av
Melbourne Drivers and Riders						
<0.05	60	64	63	-4	(-6%)	65
[a] at 0.05 & above	19	23	27	-4	(-17%)	22
% at 0.05 & above	(24%)	(26%)	(30%)			(26%)
[b] >0.15	9	12	12	-3	(-25%)	11
%>0.15	(11%)	(14%)	(13%)			(12%)
[b] as a % of [a]	(47%)	(52%)	(44%)			(47%)
BAC Unknown	5	3	2	2	(67%)	3
Country Drivers and Riders						
<0.05	66	63	89	3	(5%)	76
[a] at 0.05 & above	23	27	33	-4	(-15%)	27
% at 0.05 & above	(26%)	(30%)	(27%)			(27%)
[b] >0.15	12	20	20	-8	(-40%)	17
%>0.15	(13%)	(22%)	(16%)			(17%)
[b] as a % of [a]	(52%)	(74%)	(61%)			(64%)
BAC Unknown	6	2	2	4	(200%)	5
Victorian Total Drivers and Riders						
<0.05	126	127	152	-1	(-1%)	140
[a] at 0.05 & above	42	50	60	-8	(-16%)	50
% at 0.05 & above	(25%)	(28%)	(28%)			(26%)
[b] >0.15	21	32	32	-11	(-34%)	28
%>0.15	(13%)	(18%)	(15%)			(15%)
[b] as a % of [a]	(50%)	(64%)	(53%)			(56%)
BAC Unknown	11	5	4	6	(120%)	7
Victorian Total Pedestrians						
<0.05	32	39	32	-7	(-18%)	33
[a] at 0.05 & above	11	17	8	-6	(-35%)	14
% at 0.05 & above	(26%)	(30%)	(20%)			(31%)
[b] >0.15	3	12	6	-9	(-75%)	9
%>0.15	(7%)	(21%)	(15%)			(20%)
[b] as a % of [a]	(27%)	(71%)	(75%)			(65%)
BAC Unknown	7	3	1	4	(133%)	4

The National Picture

State	Killed (12 months to February)				
	2010	2009	2008	2007	2010 v 2009
NSW	479	377	428	465	102 (27%)
VIC	294	304	334	322	-10 (-3%)
QLD	312	329	355	344	-17 (-5%)
SA	128	106	118	117	22 (21%)
WA	175	217	215	211	-42 (-19%)
TAS	55	47	44	52	8 (17%)
NT	34	70	56	49	-36 (-51%)
ACT	15	12	15	12	3 (25%)
AUST TOTAL	1,492	1,462	1,565	1,572	30 (2%)
AUST minus VIC	1,198	1,158	1,231	1,250	40 (3%)

State	Deaths per 10,000 registered vehicles (12 months to February)			Deaths per 100,000 population (12 months to February)		
	2010	2009	2008	2010	2009	2008
NSW	1.04	0.83	0.97	6.73	5.39	6.20
VIC	0.73	0.77	0.87	5.40	5.72	6.40
QLD	0.94	1.02	1.15	7.05	7.65	8.46
SA	1.05	0.89	1.01	7.87	6.60	7.43
WA	0.94	1.22	1.26	7.78	9.97	10.16
TAS	1.36	1.19	1.14	10.93	9.42	8.90
NT	2.59	5.58	4.66	15.07	31.71	25.95
ACT	0.60	0.49	0.64	4.26	3.47	4.40
AUST TOTAL	0.94	0.95	1.04	6.79	6.81	7.43
AUST minus VIC	1.02	1.01	1.11	7.26	7.18	7.76

Victoria v Australia – 12 Month Moving Fatality Rate



Booze-Bus Random Breath Testing

12 months to February 2010 (monthly totals)

	2009										2010	
	Mar	Apr	May	Jun	Jul	Aug	Sep	Oct	Nov	Dec	Jan	Feb
Melbourne	41,984	102,007	112,001	90,202	91,302	90,377	91,393	90,050	77,312	83,002	99,374	88,214
Country	10,540	18,522	21,274	16,400	18,425	19,281	18,070	18,227	13,035	26,331	23,837	17,657
Vic Total	52,524	120,529	133,275	106,602	109,727	109,658	109,463	108,277	90,347	109,333	123,211	105,871

12 months to February vs previous 12 months

	2010	2009	2008	2010 v 2009	2010 v 2008
Melbourne	1,057,218	1,124,971	1,020,497	-67,753 (-6%)	36,721 (4%)
Country	221,599	236,803	259,181	-15,204 (-6%)	-37,582 (-15%)
Vic Total	1,278,817	1,361,774	1,279,678	-82,957 (-6%)	-861 (-0%)

Mobile Safety Camera Data

Speed Infringements Issued from Mobile Cameras (monthly totals)

Monthly Average = 47,837

	2009										2010	
	Mar	Apr	May	Jun	Jul	Aug	Sep	Oct	Nov	Dec	Jan	Feb
	49,261	43,314	37,758	46,126	50,428	41,211	48,564	57,619	41,750	52,024	51,439	54,548

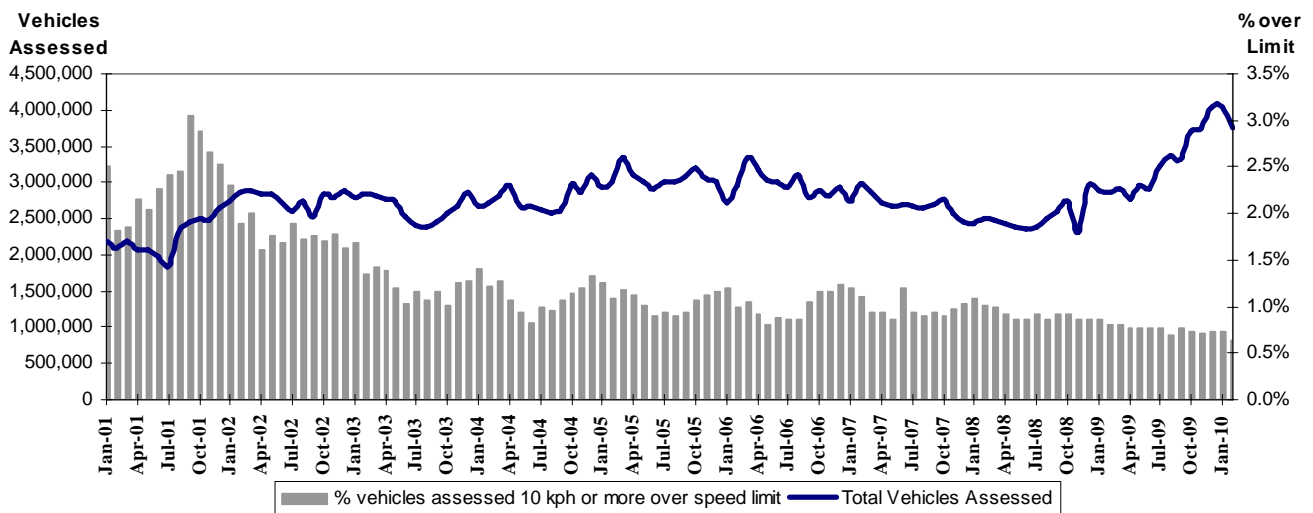
Excessive Speed Infringements Issued from Mobile Cameras (monthly totals)

Monthly Average = 370

	2009										2010	
	Mar	Apr	May	Jun	Jul	Aug	Sep	Oct	Nov	Dec	Jan	Feb
	438	359	339	394	327	366	346	461	282	352	382	394

Note: An ESI is defined as 25km/h over the speed limit except in a 110km/h zone where it is 20km/h over the limit.

Mobile Safety Cameras – Vehicles assessed and percentage of vehicles assessed 10km/h or more over speed limit per month



Explanations and References

Hi-Alcetime is those times of the day and week (*shaded* in the table below) when casualty crashes are **ten times more likely to involve alcohol** than casualty crashes at other (**Lo-Alcetime**) times.

	12am - 6am	6am - 8am	8am - 10am	10am - 2pm	2pm - 4pm	4pm - 6pm	6pm - 12pm
Monday							
Tuesday							
Wednesday							
Thursday							
Friday							
Saturday							
Sunday							

Useful Internet Sites

TAC Sites

- TAC Safety (Road Safety) www.tacsafety.com.au
- TAC How safe is your car www.howsafeisyourcar.com.au
- TAC Learners Log www.learnerslog.com.au
- TAC Motorcycle Safety Website www.spokes.com.au
- TAC Corporate site www.tac.vic.gov.au

Victorian Sites:

- arrive alive www.vicroads.vic.gov.au
- VicRoads www.vicroads.vic.gov.au
- Victorian Police www.police.vic.gov.au
- Parliamentary Road Safety Committee www.parliament.vic.gov.au/rsc/
- ARRB Transport Research www.arrb.com.au
- RACV www.racv.com.au
- Monash University Accident Research Centre www.monash.edu.au/muarc
- Roadsafe www.roadsafe.org.au

National and Interstate Sites:

- Australian Transport Safety Bureau www.atsb.gov.au
- Roads and Traffic Authority (NSW) www.rta.nsw.gov.au
- Queensland Transport - Road Safety transport.qld.gov.au/Home/Safety/Road
- Department of Transport (SA) www.transport.sa.gov.au/index.htm
- Main Roads Western Australia - Road Safety www.mrwa.wa.gov.au

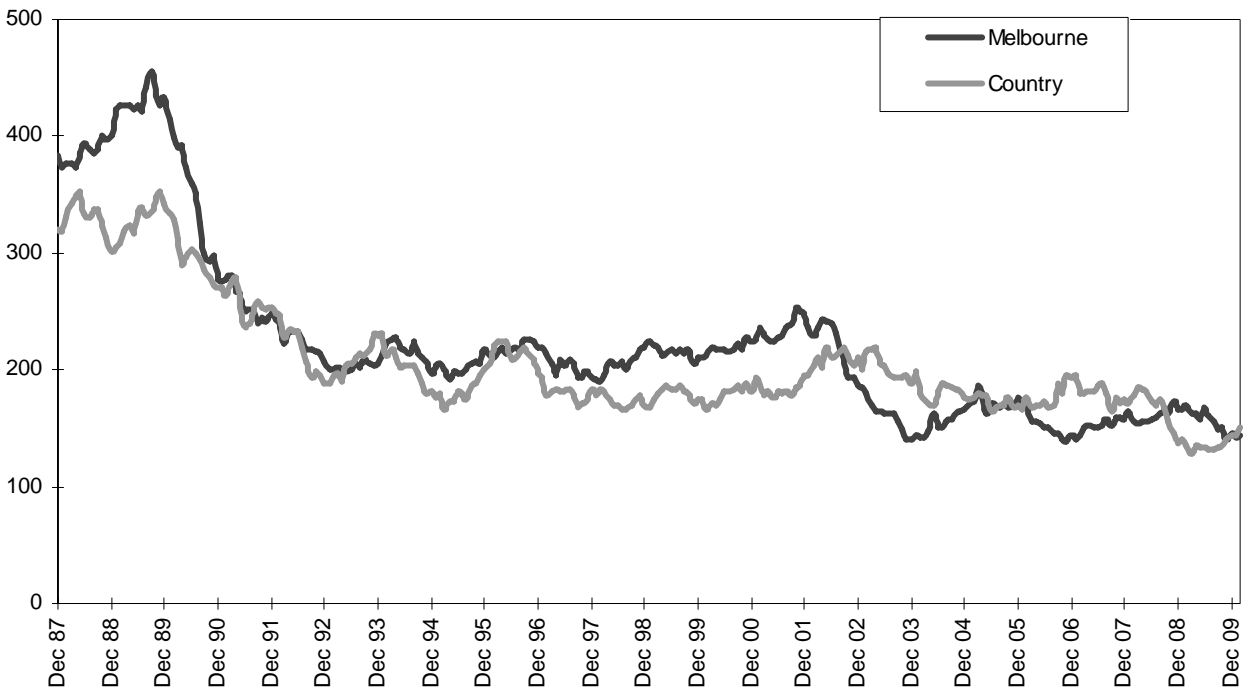
International Sites:

- National Highway Traffic Safety Admin (USA) www.nhtsa.dot.gov
- Swedish Road and Transport Institute (VTI) www.vti.se
- SWOV Institute for Road Safety Research www.swov.nl

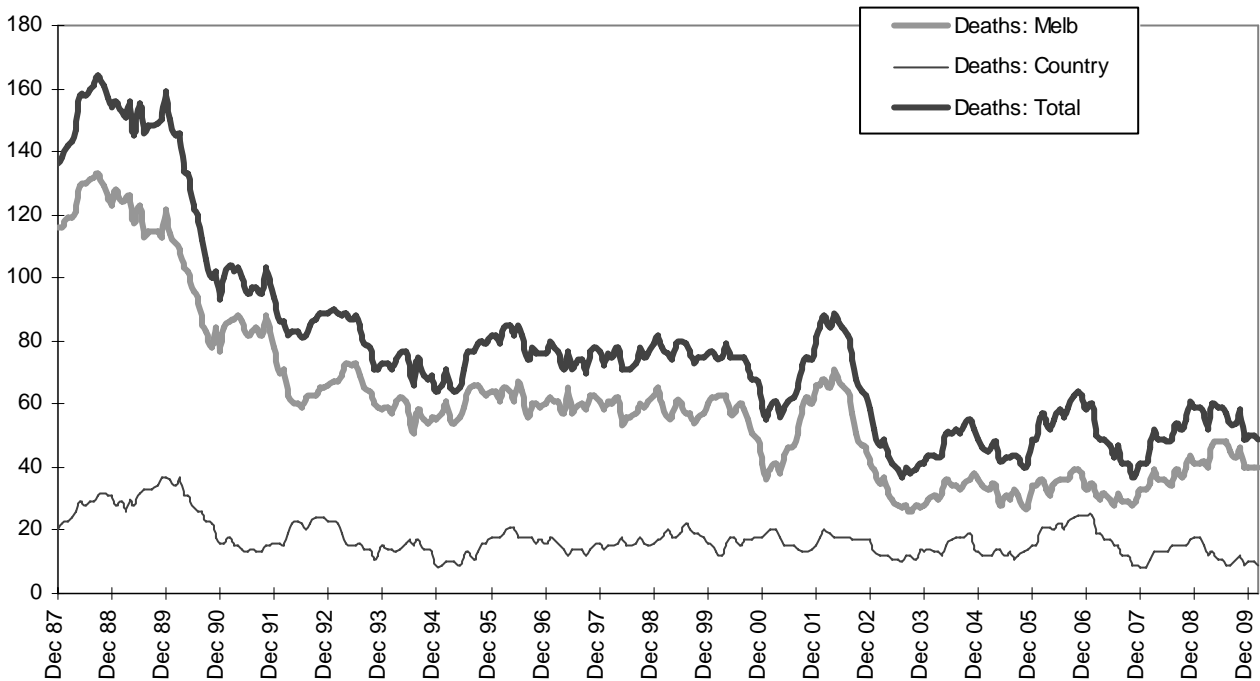
Related Sites:

- Australian Drug Foundation www.adf.org.au
- Bicycle Victoria www.bv.com.au

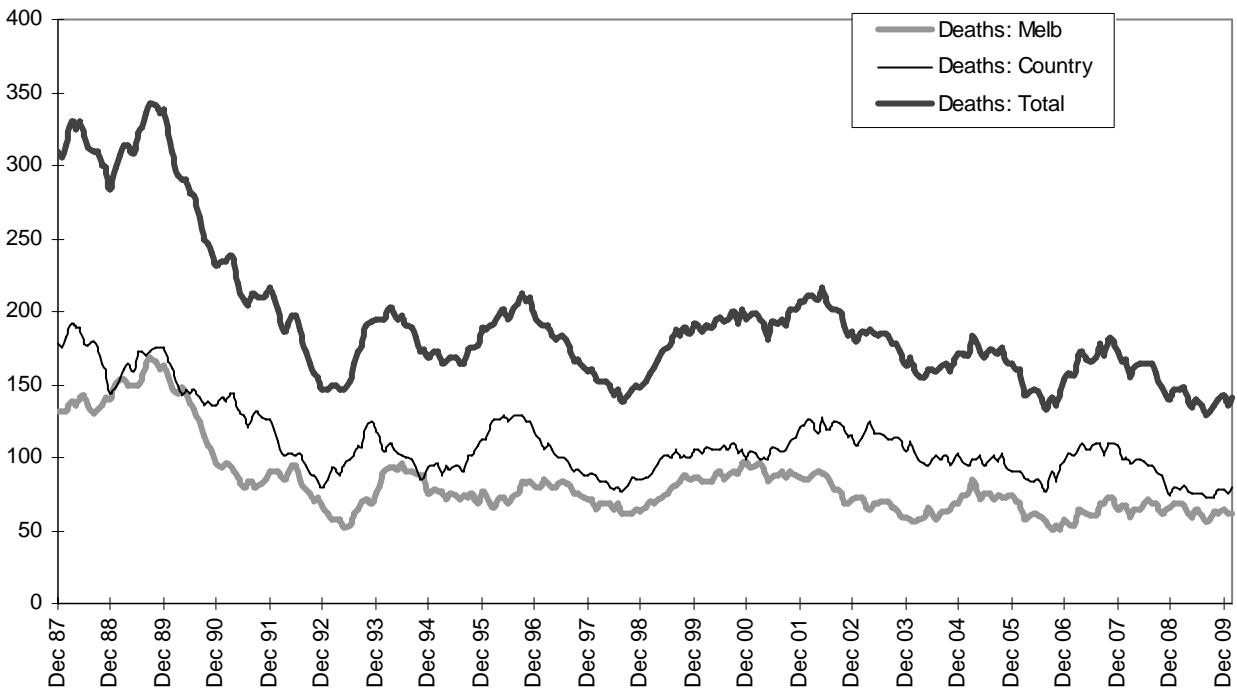
Graph 1 – Melbourne/country fatalities



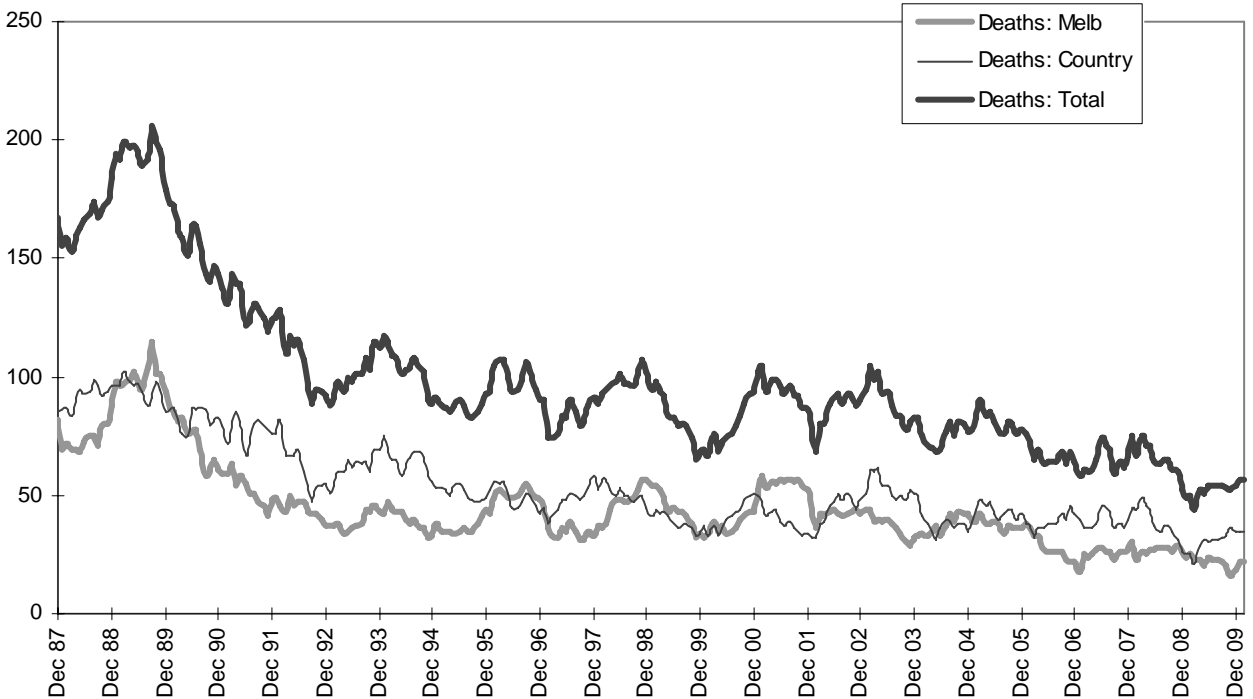
Graph 2a – Pedestrian fatalities (Melbourne/country)



Graph 2b – Driver fatalities (Melbourne/country)



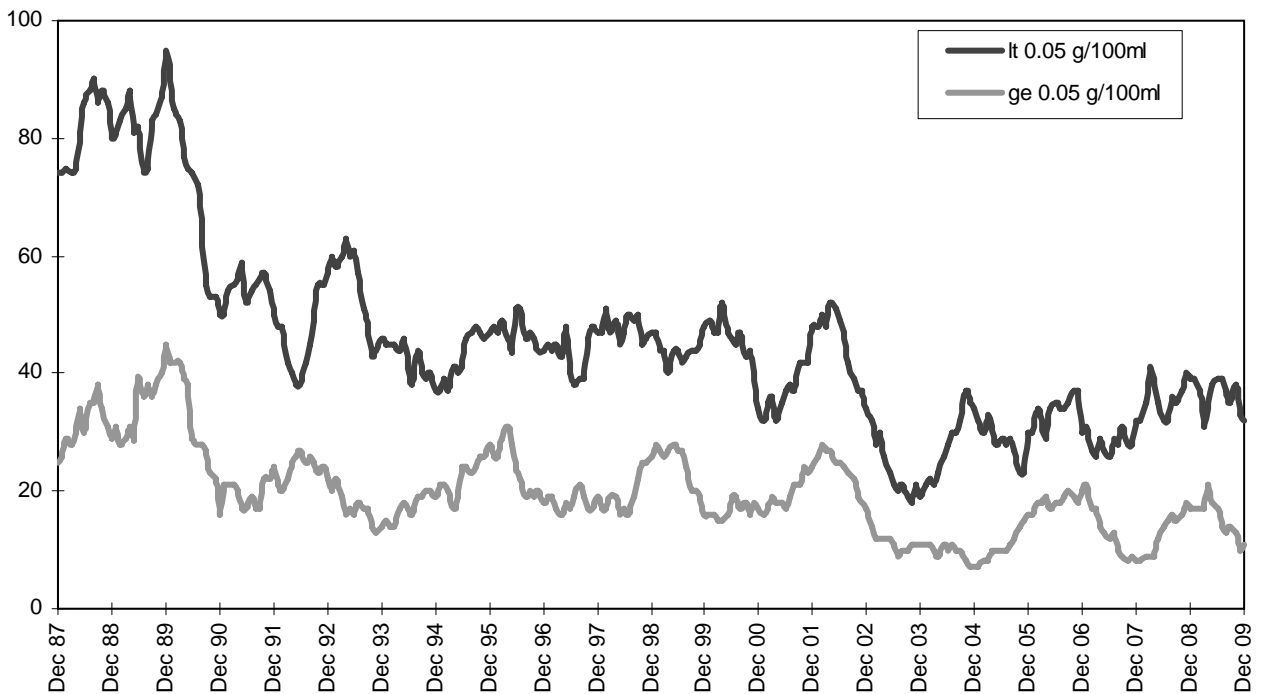
Graph 2c – Passenger fatalities (Melbourne/country)



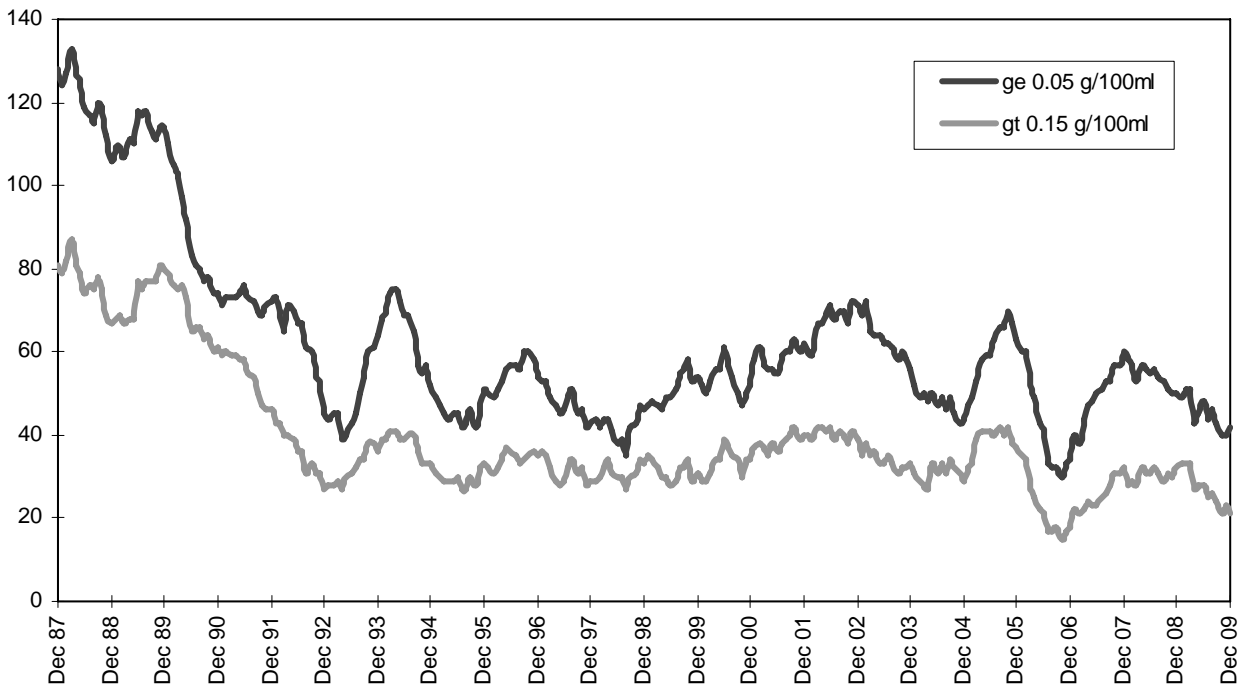
Graph 2d –Motorcyclist fatalities (Melbourne/country)



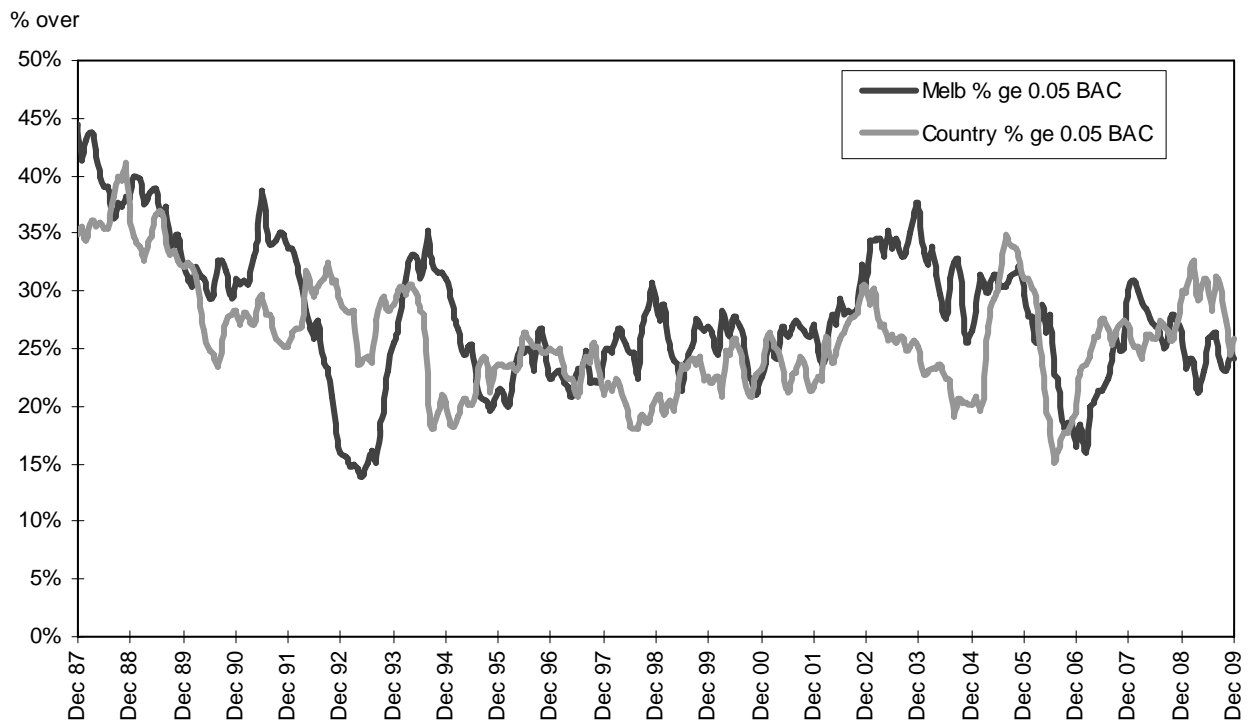
Graph 3a – Pedestrian deaths by BAC



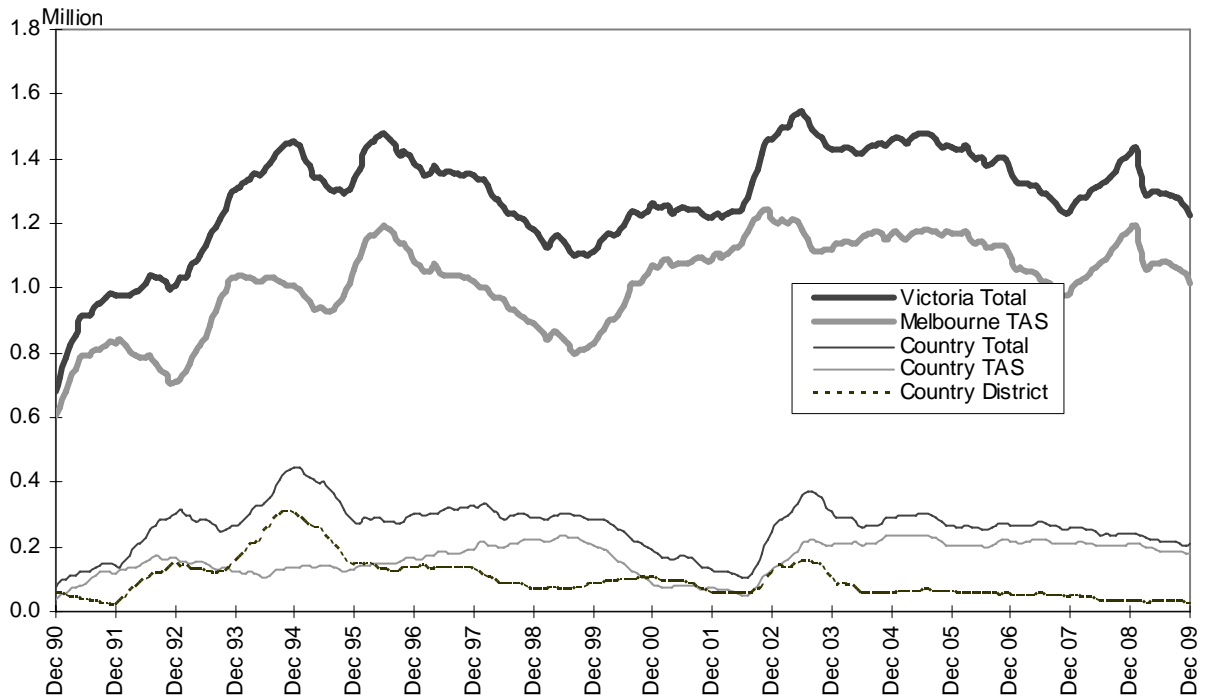
Graph 3b – Driver/rider deaths by BAC



Graph 3c – Proportion of driver/rider deaths with a BAC ge 0.05



Graph 4a – Booze-Bus RBTs



Graph 4b – RBT: Percentage positive readings

