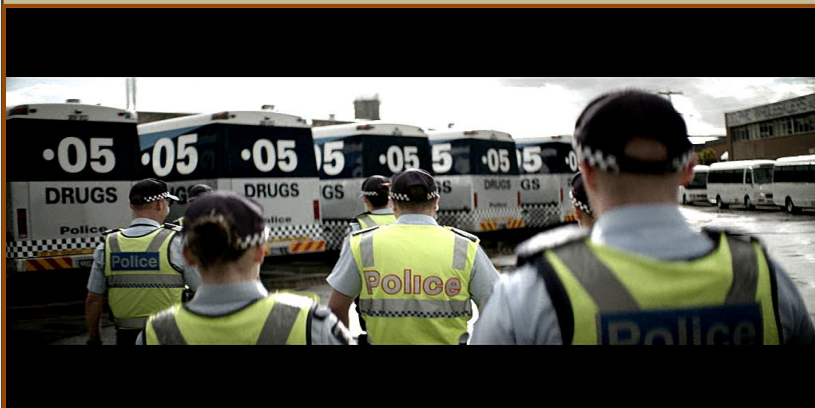


ROAD SAFETY STATISTICAL SUMMARY

January 2015



**TRANSPORT
ACCIDENT
COMMISSION**

60 Brougham Street
Geelong Vic 3220
PO Box 742
Geelong Vic 3220
Ausdoc DX 216079 Geelong

Telephone 1300 654 329
STD Toll Free 1800 332 556
Fax: 03 9656 9300
www.tac.vic.gov.au
ABN 22 033 947 623

Contents

Status Report.....	4
Fatalities.....	4
Claims involving an acute hospital admission*	5
Fatalities: 12 months to January 2015.....	6
Claims involving acute hospitalisation over 14 days: 12 months to July 2014 (claim acceptance date)	8
Claims involving an acute hospital admission: 12 months to July 2014 (claim acceptance date)	10
Fatalities: Victorian monthly totals since 1951	12
Fatalities by Week (2009 to 2015).....	13
The National Picture.....	14
Booze-Bus Random Breath Testing	15
Mobile Safety Camera Data	15
Explanations and References	16
Useful Internet Sites	17
Figures	18

Note about the data in this report

- All data provided in this report is the data most recently available at time of production. Fatalities, breath-test data and safety camera data are updated to the end of report month. A 6-month lag applies to TAC claims data.
- Reported data will have one extra day of exposure for leap years.
- Data is subject to revision as additional information about known accidents/claims is received, and as new accident/claim reports are received and processed.

*An acute hospital admission refers to a hospital admission that occurred within 7 days of accident.

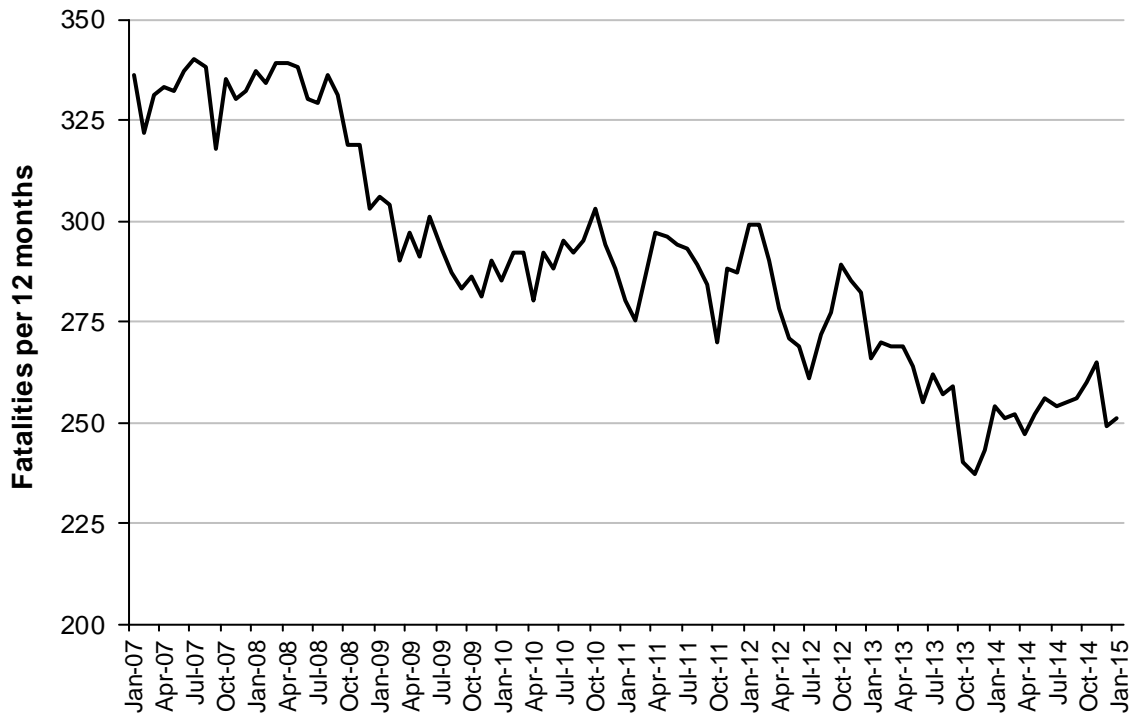
Status Report

Fatalities

- The rolling 12 month number of road fatalities in January 2015 stands at 251, 3% less than in 2014 (254).
- 27 people were fatally injured in January 2015 on Victorian roads. This compares to 25 in January 2014.

Fatalities (rolling 12 month, to end January 2015)

Category	2015	2014	2013	2015 v 2014	2014 v 2015	2014 v 2015	5 Year Av	
Fatal Injuries (Rolling 12 Month Total)								
Fatal (to January)	251	254	266	-3	(-1%)	-15	(-6%)	270
per 10,000 veh	0.55	0.57	0.61	-0.02	(-4%)	-0.06	(-10%)	0.62
per 100,000 pop	4.29	4.42	4.72	-0.13	(-3%)	-0.43	(-9%)	4.79
Accidents (Rolling 12 Month Total)								
Fatal (to January)	228	231	247	-3	(-1%)	-19	(-8%)	246
per 10,000 veh	0.50	0.52	0.57	-0.02	(-4%)	-0.07	(-12%)	0.57
per 100,000 pop	3.90	4.02	4.38	-0.12	(-3%)	-0.48	(-11%)	4.37

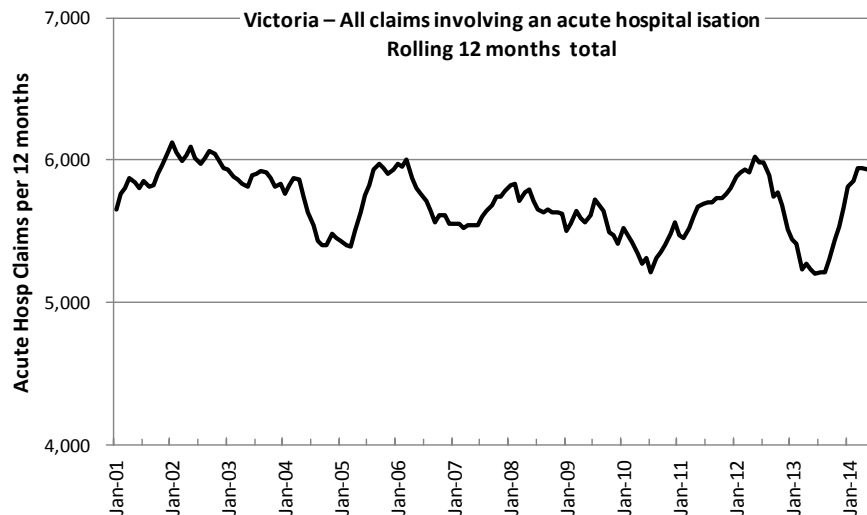
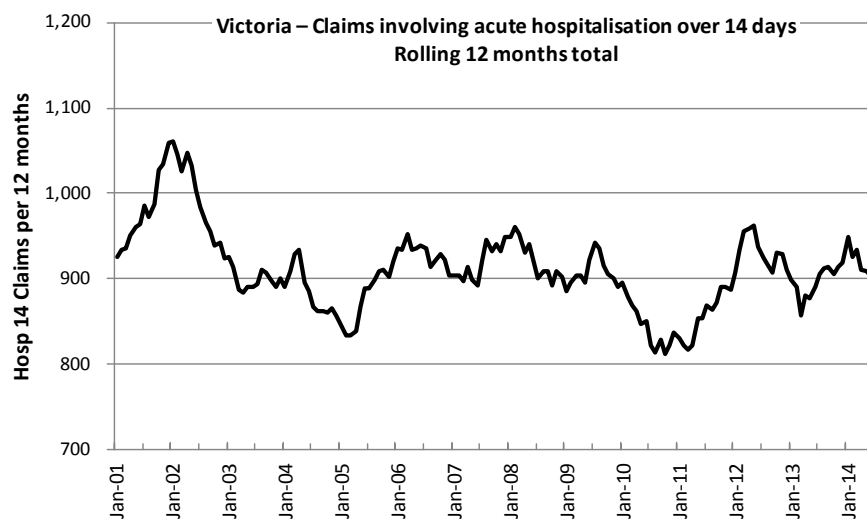


Victoria – Fatalities, rolling 12 months total

Claims involving an acute hospital admission*

(by claim acceptance date – rolling 12 month, to midnight 31 July 2014)

Category	2015	2014	2013	2015 v 2014		2014 v 2015		5 Year Av
Claims involving an acute hospitalisation over 14 days (Rolling 12 Month Total)								
Claims (to July)	900	906	923	-6	(-1%)	-23	(-2%)	884
per 100,000 pop	15.5	15.9	16.6	-0.4	(-3%)	-1.1	(-7%)	15.7
per 10,000 veh	2.0	2.1	2.2	-0.1	(-5%)	-0.2	(-9%)	2.0
All claims involving an acute hospitalisation (Rolling 12 Month Total)								
Claims (to July)	6,018	5,214	5,984	+804	(+15%)	+34	(+1%)	5,628
per 100,000 pop	103.8	91.6	107.4	+12.2	(+13%)	-3.6	(-3%)	99.9
per 10,000 veh	13.4	11.9	14.0	+1.5	(+13%)	-0.6	(-4%)	13.0



*An acute hospital admission refers to a hospital admission that occurred within 7 days of accident.

Fatalities: 12 months to January 2015

Category	2015	2014	2013	2015 v 2014		2015 v 2013		5 Year Av
Overview								
Fatalities	251	254	266	-3	(-1%)	-15	(-6%)	270
Accidents	228	231	247	-3	(-1%)	-19	(-8%)	246
Sex								
Female	66	85	80	-19	(-22%)	-14	(-18%)	75
Male	185	169	186	+16	(+9%)	-1	(-1%)	195
Roaduser								
Bicyclist	9	8	5	+1	(+13%)	+4	(+80%)	8
Driver	120	122	141	-2	(-2%)	-21	(-15%)	127
Motorcyclist	30	41	42	-11	(-27%)	-12	(-29%)	42
Passenger	48	45	45	+3	(+7%)	+3	(+7%)	52
Pedestrian	44	38	33	+6	(+16%)	+11	(+33%)	41
Location								
Melbourne	110	105	121	+5	(+5%)	-11	(-9%)	118
Rural Victoria	141	149	145	-8	(-5%)	-4	(-3%)	152
Agegroup								
0-4	4	0	3	+4	NA	+1	(+33%)	4
5-15	8	7	7	+1	(+14%)	+1	(+14%)	7
16-17	5	3	3	+2	(+67%)	+2	(+67%)	5
18-20	15	16	26	-1	(-6%)	-11	(-42%)	25
21-25	33	24	34	+9	(+38%)	-1	(-3%)	33
26-29	20	18	17	+2	(+11%)	+3	(+18%)	20
30-39	38	33	39	+5	(+15%)	-1	(-3%)	36
40-49	26	31	28	-5	(-16%)	-2	(-7%)	32
50-59	27	34	35	-7	(-21%)	-8	(-23%)	32
60-69	33	30	27	+3	(+10%)	+6	(+22%)	29
70+	42	57	46	-15	(-26%)	-4	(-9%)	47
Alctime								
High (Melb)	55	61	59	-6	(-10%)	-4	(-7%)	62
High (Rural)	57	53	69	+4	(+8%)	-12	(-17%)	69
High (Vic)	112	114	128	-2	(-2%)	-16	(-13%)	132
Low (Melb)	55	44	62	+11	(+25%)	-7	(-11%)	56
Low (Rural)	84	96	76	-12	(-13%)	+8	(+11%)	82
Low (Vic)	139	140	138	-1	(-1%)	+1	(+1%)	138
Accident Type								
Intersection								
Adjacent direction	35	35	26	0	(0%)	+9	(+35%)	31
Opposing direction	7	4	4	+3	(+75%)	+3	(+75%)	5
Mid-block/other								
Head on	37	43	42	-6	(-14%)	-5	(-12%)	39
Same direction	10	17	13	-7	(-41%)	-3	(-23%)	15
Manoeuvre/o'taking	14	7	20	+7	(+100%)	-6	(-30%)	14
On path	9	1	6	+8	(+800%)	+3	(+50%)	6
Single vehicle	90	102	115	-12	(-12%)	-25	(-22%)	111
Other (incl peds)	49	45	40	+4	(+9%)	+9	(+23%)	48

Fatalities: 12 months to January 2015 – Continued

Category	2015	2014	2013	2015 v 2014		2015 v 2013		5 Year Av
Police Service Area (based on Local Government Area (see p.13))								
BALLARAT	5	7	2	-2	(-29%)	+3	(+150%)	6
BANYULE	0	3	1	-3	(-100%)	-1	(-100%)	2
BASS COAST	8	8	5	0	(0%)	+3	(+60%)	7
BAW BAW	4	6	6	-2	(-33%)	-2	(-33%)	7
BENALLA	8	11	9	-3	(-27%)	-1	(-11%)	9
BENDIGO	6	5	11	+1	(+20%)	-5	(-45%)	7
BOROONDARA	3	5	2	-2	(-40%)	+1	(+50%)	3
BRIMBANK	7	5	8	+2	(+40%)	-1	(-13%)	7
CAMPASPE	8	3	9	+5	(+167%)	-1	(-11%)	5
CARDINIA	8	1	5	+7	(+700%)	+3	(+60%)	6
CASEY	4	7	6	-3	(-43%)	-2	(-33%)	7
CENTRAL GOLDFIELDS	2	4	2	-2	(-50%)	0	(0%)	3
DAREBIN	1	2	5	-1	(-50%)	-4	(-80%)	3
EAST GIPPSLAND	6	2	7	+4	(+200%)	-1	(-14%)	6
FRANKSTON	5	1	3	+4	(+400%)	+2	(+67%)	4
GEELONG	7	5	15	+2	(+40%)	-8	(-53%)	10
GLEN EIRA	5	6	5	-1	(-17%)	0	(0%)	5
GREATER DANDENONG	5	4	5	+1	(+25%)	0	(0%)	4
HOBSONS BAY	0	3	0	-3	(-100%)	0		1
HORSHAM	2	4	3	-2	(-50%)	-1	(-33%)	4
HUME	5	5	11	0	(0%)	-6	(-55%)	6
KINGSTON	5	6	8	-1	(-17%)	-3	(-38%)	5
KNOX	5	4	1	+1	(+25%)	+4	(+400%)	3
LA TROBE	5	6	7	-1	(-17%)	-2	(-29%)	6
MACEDON RANGES	10	5	6	+5	(+100%)	+4	(+67%)	6
MANNINGHAM	1	0	4	+1		-3	(-75%)	2
MARIBYRNONG	0	4	3	-4	(-100%)	-3	(-100%)	2
MAROONDAH	2	0	4	+2		-2	(-50%)	2
MELBOURNE	5	2	3	+3	(+150%)	+2	(+67%)	4
MELTON	5	8	5	-3	(-38%)	0	(0%)	6
MILDURA	1	7	1	-6	(-86%)	0	(0%)	3
MITCHELL	6	9	10	-3	(-33%)	-4	(-40%)	8
MONASH	1	4	5	-3	(-75%)	-4	(-80%)	3
MOONEE VALLEY	4	3	1	+1	(+33%)	+3	(+300%)	2
MOORABOOL	5	9	9	-4	(-44%)	-4	(-44%)	9
MORELAND	6	2	3	+4	(+200%)	+3	(+100%)	4
MORNINGTON PENINSULA	10	3	6	+7	(+233%)	+4	(+67%)	7
NILLUMBIK	1	0	2	+1		-1	(-50%)	1
NORTHERN GRAMPPIANS	3	7	6	-4	(-57%)	-3	(-50%)	5
PORT PHILLIP	1	4	1	-3	(-75%)	0	(0%)	2
SHEPPARTON	3	5	11	-2	(-40%)	-8	(-73%)	6
SOUTHERN GRAMPPIANS	6	0	5	+6		+1	(+20%)	4
STONNINGTON	3	4	1	-1	(-25%)	+2	(+200%)	2
SURF COAST	7	3	3	+4	(+133%)	+4	(+133%)	7
SWAN HILL	4	9	6	-5	(-56%)	-2	(-33%)	6
WANGARATTA	10	9	6	+1	(+11%)	+4	(+67%)	10
WARRNAMBOOL	13	13	1	0	(0%)	+12	(+1200%)	8
WELLINGTON	5	6	2	-1	(-17%)	+3	(+150%)	5
WHITEHORSE	3	2	2	+1	(+50%)	+1	(+50%)	4
WHITTLESEA	6	3	6	+3	(+100%)	0	(0%)	6
WODONGA	7	6	2	+1	(+17%)	+5	(+250%)	5
WYNDHAM	5	3	10	+2	(+67%)	-5	(-50%)	6
YARRA	1	1	1	0	(0%)	0	(0%)	2
YARRA RANGES	3	10	5	-7	(-70%)	-2	(-40%)	7

Claims involving acute hospitalisation over 14 days: 12 months to July 2014 (claim acceptance date)

Category	2014	2013	2012	2014 v 2013		2014 v 2012		5 Year Av
Overview								
Claims	900	906	923	-6	(-1%)	-23	(-2%)	884
Sex								
Female	362	374	405	-12	(-3%)	-43	(-11%)	356
Male	538	531	518	+7	(+1%)	+20	(+4%)	527
Roaduser								
Driver	365	380	356	-15	(-4%)	+9	(+3%)	347
Passenger	139	143	149	-4	(-3%)	-10	(-7%)	141
Motorcyclist	158	140	165	+18	(+13%)	-7	(-4%)	162
Pedestrian	179	193	190	-14	(-7%)	-11	(-6%)	179
Cyclist	38	30	40	+8	(+27%)	-2	(-5%)	37
Train/Tram	6	5	9	+1	(+20%)	-3	(-33%)	6
Location*								
Melbourne	382	581	618	-199	(-34%)	-236	(-38%)	529
Rural Victoria	207	319	301	-112	(-35%)	-94	(-31%)	286
Agegroup								
0-4	1	2	1	-1	(-50%)	0	(0%)	3
5-15	12	8	14	+4	(+50%)	-2	(-14%)	13
16-17	11	16	26	-5	(-31%)	-15	(-58%)	18
18-20	57	64	52	-7	(-11%)	+5	(+10%)	58
21-25	82	82	81	0	(0%)	+1	(+1%)	81
26-29	45	39	63	+6	(+15%)	-18	(-29%)	51
30-39	112	112	114	0	(0%)	-2	(-2%)	111
40-49	121	115	118	+6	(+5%)	+3	(+3%)	117
50-59	112	97	105	+15	(+15%)	+7	(+7%)	102
60-69	95	116	117	-21	(-18%)	-22	(-19%)	100
70+	252	255	232	-3	(-1%)	+20	(+9%)	229
Alctime*								
High (Melb)	160	260	278	-100	(-38%)	-118	(-42%)	229
High (Rural)	86	115	121	-29	(-25%)	-35	(-29%)	115
High (Vic)	246	375	399	-129	(-34%)	-153	(-38%)	344
Low (Melb)	222	321	340	-99	(-31%)	-118	(-35%)	300
Low (Rural)	121	204	180	-83	(-41%)	-59	(-33%)	171
Low (Vic)	343	525	520	-182	(-35%)	-177	(-34%)	471
Accident Type								
Intersection								
Adjacent direction	102	136	116	-34	(-25%)	-14	(-12%)	117
Opposing direction	66	54	67	+12	(+22%)	-1	(-1%)	61
Mid-block/other								
Head on	90	81	73	+9	(+11%)	+17	(+23%)	79
Same direction	67	79	90	-12	(-15%)	-23	(-26%)	84
Manoeuvre/o'taking	60	63	57	-3	(-5%)	+3	(+5%)	55
On path	25	22	23	+3	(+14%)	+2	(+9%)	25
Single vehicle	267	229	262	+38	(+17%)	+5	(+2%)	246
Other (incl peds)	223	242	235	-19	(-8%)	-12	(-5%)	217

Note: Excludes rejected claims and claims for interstate crashes.

* Due to changes in claim process procedures, locality data are missing for a significant number of claims lodged after October 2013.

Claims involving acute hospitalisation over 14 days: 12 months to July 2014 (claim acceptance date) -
Continued

Category	2014	2013	2012	2014 v 2013		2014 v 2012		5 Year Av
Police Service Area* (based on Local Government Area (see p.13))								
BALLARAT	8	16	7	-8	(-50%)	+1	(+14%)	12
BANYULE	3	11	11	-8	(-73%)	-8	(-73%)	9
BASS COAST	18	13	13	+5	(+38%)	+5	(+38%)	17
BAW BAW	4	8	16	-4	(-50%)	-12	(-75%)	9
BENALLA	13	17	15	-4	(-24%)	-2	(-13%)	20
BENDIGO	11	15	18	-4	(-27%)	-7	(-39%)	16
BOROONDARA	13	18	30	-5	(-28%)	-17	(-57%)	21
BRIMBANK	12	22	33	-10	(-45%)	-21	(-64%)	20
CAMPASPE	5	7	4	-2	(-29%)	+1	(+25%)	5
CARDINIA	9	13	16	-4	(-31%)	-7	(-44%)	14
CASEY	19	26	21	-7	(-27%)	-2	(-10%)	25
CENTRAL GOLDFIELDS	3	8	6	-5	(-63%)	-3	(-50%)	5
DAREBIN	7	22	16	-15	(-68%)	-9	(-56%)	16
EAST GIPPSLAND	6	8	16	-2	(-25%)	-10	(-63%)	11
FRANKSTON	7	13	15	-6	(-46%)	-8	(-53%)	14
GEELONG	17	38	31	-21	(-55%)	-14	(-45%)	26
GLEN EIRA	19	31	24	-12	(-39%)	-5	(-21%)	28
GREATER DANDENONG	23	27	36	-4	(-15%)	-13	(-36%)	27
HOBSONS BAY	6	12	11	-6	(-50%)	-5	(-45%)	9
HORSHAM	2	5	13	-3	(-60%)	-11	(-85%)	8
HUME	10	32	28	-22	(-69%)	-18	(-64%)	23
KINGSTON	15	23	18	-8	(-35%)	-3	(-17%)	19
KNOX	16	15	19	+1	(+7%)	-3	(-16%)	16
LA TROBE	8	16	12	-8	(-50%)	-4	(-33%)	13
MACEDON RANGES	14	20	12	-6	(-30%)	+2	(+17%)	17
MANNINGHAM	9	13	20	-4	(-31%)	-11	(-55%)	13
MARIBYRNONG	5	15	13	-10	(-67%)	-8	(-62%)	12
MAROONDAH	4	7	13	-3	(-43%)	-9	(-69%)	8
MELBOURNE	18	32	29	-14	(-44%)	-11	(-38%)	28
MELTON	9	17	14	-8	(-47%)	-5	(-36%)	12
MILDURA	4	7	12	-3	(-43%)	-8	(-67%)	7
MITCHELL	17	20	20	-3	(-15%)	-3	(-15%)	17
MONASH	20	19	23	+1	(+5%)	-3	(-13%)	21
MOONEE VALLEY	15	17	19	-2	(-12%)	-4	(-21%)	15
MOORABOOL	9	17	10	-8	(-47%)	-1	(-10%)	13
MORELAND	22	34	23	-12	(-35%)	-1	(-4%)	23
MORNINGTON PENINSULA	13	31	36	-18	(-58%)	-23	(-64%)	27
NILLUMBIK	4	9	6	-5	(-56%)	-2	(-33%)	5
NORTHERN GRAMPPIANS	10	12	5	-2	(-17%)	+5	(+100%)	7
PORT PHILLIP	13	9	16	+4	(+44%)	-3	(-19%)	12
SHEPPARTON	7	17	10	-10	(-59%)	-3	(-30%)	11
SOUTHERN GRAMPPIANS	7	8	7	-1	(-13%)	0	(0%)	9
STONNINGTON	14	10	18	+4	(+40%)	-4	(-22%)	16
SURF COAST	5	11	9	-6	(-55%)	-4	(-44%)	10
SWAN HILL	4	7	9	-3	(-43%)	-5	(-56%)	6
WANGARATTA	9	17	15	-8	(-47%)	-6	(-40%)	16
WARRNAMBOOL	8	14	17	-6	(-43%)	-9	(-53%)	12
WELLINGTON	7	9	9	-2	(-22%)	-2	(-22%)	10
WHITEHORSE	15	12	19	+3	(+25%)	-4	(-21%)	19
WHITTLESEA	15	24	30	-9	(-38%)	-15	(-50%)	20
WODONGA	11	9	15	+2	(+22%)	-4	(-27%)	10
WYNDHAM	16	20	25	-4	(-20%)	-9	(-36%)	17
YARRA	11	15	9	-4	(-27%)	+2	(+22%)	12
YARRA RANGES	20	32	27	-12	(-38%)	-7	(-26%)	28

Note: excludes rejected claims and claims for interstate crashes

* Due to changes in claim process procedures, locality data are missing for a significant number of claims lodged after October 2013.

Claims involving an acute hospital admission: 12 months to July 2014 (claim acceptance date)

Category	2014	2013	2012	2014 v 2013	2014 v 2012	2014 v 2012	5 Year Av	
Overview								
Claims	6,018	5,214	5,984	+804	(+15%)	+34	(+1%)	5,628
Sex								
Female	2,515	2,152	2,594	+363	(+17%)	-79	(-3%)	2,372
Male	3,497	3,060	3,390	+437	(+14%)	+107	(+3%)	3,253
Roaduser								
Driver	2,690	2,401	2,837	+289	(+12%)	-147	(-5%)	2,565
Passenger	1,040	890	1,020	+150	(+17%)	+20	(+2%)	1,010
Motorcyclist	1,141	828	944	+313	(+38%)	+197	(+21%)	964
Pedestrian	638	627	668	+11	(+2%)	-30	(-4%)	633
Cyclist	389	352	376	+37	(+11%)	+13	(+3%)	354
Train/Tram	32	27	27	+5	(+19%)	+5	(+19%)	25
Location*								
Melbourne	2,359	3,501	4,022	-1142	(-33%)	-1663	(-41%)	3,433
Rural Victoria	1,088	1,647	1,889	-559	(-34%)	-801	(-42%)	1,634
Agegroup								
0-4	53	45	46	+8	(+18%)	+7	(+15%)	48
5-15	173	176	190	-3	(-2%)	-17	(-9%)	190
16-17	95	92	129	+3	(+3%)	-34	(-26%)	117
18-20	522	469	542	+53	(+11%)	-20	(-4%)	527
21-25	787	635	768	+152	(+24%)	+19	(+2%)	706
26-29	471	372	461	+99	(+27%)	+10	(+2%)	429
30-39	898	783	928	+115	(+15%)	-30	(-3%)	875
40-49	908	785	884	+123	(+16%)	+24	(+3%)	839
50-59	755	632	765	+123	(+19%)	-10	(-1%)	697
60-69	536	474	535	+62	(+13%)	+1	(+0%)	488
70+	820	751	736	+69	(+9%)	+84	(+11%)	713
Alctime*								
High (Melb)	1,040	1,530	1,838	-490	(-32%)	-798	(-43%)	1,543
High (Rural)	439	671	793	-232	(-35%)	-354	(-45%)	696
High (Vic)	1,479	2,201	2,631	-722	(-33%)	-1152	(-44%)	2,239
Low (Melb)	1,319	1,971	2,184	-652	(-33%)	-865	(-40%)	1,890
Low (Rural)	649	976	1,096	-327	(-34%)	-447	(-41%)	939
Low (Vic)	1,968	2,947	3,280	-979	(-33%)	-1312	(-40%)	2,829
Accident Type								
Intersection								
Adjacent direction	818	765	901	+53	(+7%)	-83	(-9%)	828
Opposing direction	538	458	514	+80	(+17%)	+24	(+5%)	480
Mid-block/other								
Head on	341	281	319	+60	(+21%)	+22	(+7%)	318
Same direction	850	763	951	+87	(+11%)	-101	(-11%)	860
Manoeuvre/o'taking	329	316	307	+13	(+4%)	+22	(+7%)	317
On path	281	209	240	+72	(+34%)	+41	(+17%)	228
Single vehicle	1,672	1,395	1,633	+277	(+20%)	+39	(+2%)	1,579
Other (incl peds)	1,189	1,027	1,119	+162	(+16%)	+70	(+6%)	1,018

Note: excludes rejected claims and claims for interstate crashes

* Due to changes in claim process procedures, locality data are missing for a significant number of claims lodged after October 2013.

Claims involving an acute hospital admission: 12 months to July 2014 (claim acceptance date) – Continued

Category	2014	2013	2012	2014 v 2013		2014 v 2012		5 Year Av
Police Service Area* (based on Local Government Area (see p.13))								
BALLARAT	43	97	91	-54	(-56%)	-48	(-53%)	84
BANYULE	34	53	76	-19	(-36%)	-42	(-55%)	54
BASS COAST	57	68	89	-11	(-16%)	-32	(-36%)	74
BAW BAW	32	55	71	-23	(-42%)	-39	(-55%)	52
BENALLA	61	105	111	-44	(-42%)	-50	(-45%)	113
BENDIGO	58	89	128	-31	(-35%)	-70	(-55%)	88
BOROONDARA	84	129	140	-45	(-35%)	-56	(-40%)	126
BRIMBANK	69	144	184	-75	(-52%)	-115	(-63%)	127
CAMPASPE	26	34	41	-8	(-24%)	-15	(-37%)	36
CARDINIA	59	82	82	-23	(-28%)	-23	(-28%)	83
CASEY	135	197	246	-62	(-31%)	-111	(-45%)	208
CENTRAL GOLDFIELDS	14	26	26	-12	(-46%)	-12	(-46%)	23
DAREBIN	54	90	100	-36	(-40%)	-46	(-46%)	92
EAST GIPPSLAND	24	67	79	-43	(-64%)	-55	(-70%)	58
FRANKSTON	68	107	147	-39	(-36%)	-79	(-54%)	119
GEELONG	171	194	251	-23	(-12%)	-80	(-32%)	210
GLEN EIRA	133	164	176	-31	(-19%)	-43	(-24%)	164
GREATER DANDENONG	161	198	210	-37	(-19%)	-49	(-23%)	189
HOBSONS BAY	25	53	76	-28	(-53%)	-51	(-67%)	54
HORSHAM	18	26	39	-8	(-31%)	-21	(-54%)	31
HUME	88	141	147	-53	(-38%)	-59	(-40%)	135
KINGSTON	88	129	132	-41	(-32%)	-44	(-33%)	122
KNOX	73	85	111	-12	(-14%)	-38	(-34%)	102
LA TROBE	43	65	64	-22	(-34%)	-21	(-33%)	62
MACEDON RANGES	65	94	70	-29	(-31%)	-5	(-7%)	80
MANNINGHAM	40	68	75	-28	(-41%)	-35	(-47%)	63
MARIBYRNONG	43	72	97	-29	(-40%)	-54	(-56%)	71
MAROONDAH	27	50	76	-23	(-46%)	-49	(-64%)	59
MELBOURNE	153	243	245	-90	(-37%)	-92	(-38%)	213
MELTON	46	74	75	-28	(-38%)	-29	(-39%)	67
MILDURA	27	29	44	-2	(-7%)	-17	(-39%)	32
MITCHELL	57	86	95	-29	(-34%)	-38	(-40%)	78
MONASH	122	165	186	-43	(-26%)	-64	(-34%)	156
MOONEE VALLEY	65	110	113	-45	(-41%)	-48	(-42%)	93
MOORABOOL	75	107	101	-32	(-30%)	-26	(-26%)	90
MORELAND	95	129	160	-34	(-26%)	-65	(-41%)	130
MORNINGTON PENINSULA	84	118	182	-34	(-29%)	-98	(-54%)	140
NILLUMBIK	15	40	40	-25	(-63%)	-25	(-63%)	33
NORTHERN GRAMPPIANS	20	46	30	-26	(-57%)	-10	(-33%)	31
PORT PHILLIP	97	101	120	-4	(-4%)	-23	(-19%)	103
SHEPPARTON	33	61	72	-28	(-46%)	-39	(-54%)	56
SOUTHERN GRAMPPIANS	28	48	41	-20	(-42%)	-13	(-32%)	42
STONNINGTON	89	133	111	-44	(-33%)	-22	(-20%)	116
SURF COAST	37	52	58	-15	(-29%)	-21	(-36%)	61
SWAN HILL	23	33	38	-10	(-30%)	-15	(-39%)	33
WANGARATTA	58	88	103	-30	(-34%)	-45	(-44%)	91
WARRNAMBOOL	42	59	94	-17	(-29%)	-52	(-55%)	82
WELLINGTON	46	51	74	-5	(-10%)	-28	(-38%)	66
WHITEHORSE	80	96	120	-16	(-17%)	-40	(-33%)	109
WHITTLESEA	80	139	151	-59	(-42%)	-71	(-47%)	121
WODONGA	30	67	79	-37	(-55%)	-49	(-62%)	60
WYNDHAM	93	129	148	-36	(-28%)	-55	(-37%)	122
YARRA	69	95	110	-26	(-27%)	-41	(-37%)	98
YARRA RANGES	90	167	186	-77	(-46%)	-96	(-52%)	165

Note: excludes rejected claims and claims for interstate crashes

* Due to changes in claim process procedures, locality data are missing for a significant number of claims lodged after October 2013.

Fatalities: Victorian monthly totals since 1951

Year	Jan	Feb	Mar	Apr	May	Jun	Jul	Aug	Sep	Oct	Nov	Dec	Totals
1951							61	59	52	38	29	41	
1952	45	40	54	61	54	69	67	55	44	44	31	20	584
1953	23	28	54	58	49	42	50	37	44	27	36	32	480
1954	44	42	28	60	55	36	63	33	25	52	30	41	509
1955	44	36	45	55	48	56	64	44	44	32	40	40	548
1956	34	48	51	67	53	65	71	47	39	39	44	48	606
1957	50	41	46	58	52	54	57	53	51	46	32	49	589
1958	50	38	42	58	54	41	54	53	57	40	57	52	596
1959	50	57	61	50	75	55	42	48	52	55	63	63	671
1960	49	53	57	76	70	70	67	62	61	77	52	66	760
1961	63	57	68	74	58	68	78	82	59	62	60	65	794
1962	65	41	76	78	72	80	70	77	62	53	64	70	808
1963	67	56	65	85	66	68	77	55	55	58	61	67	780
1964	73	71	78	71	83	89	80	89	67	66	62	75	904
1965	63	64	86	88	80	87	79	69	81	77	68	87	929
1966	75	59	75	103	74	86	87	80	75	66	90	85	955
1967	61	79	91	97	81	71	59	67	70	68	60	83	887
1968	70	78	86	78	73	76	73	77	72	80	81	105	949
1969	79	68	79	87	86	77	87	83	87	83	94	101	1,011
1970	85	84	106	80	87	88	110	106	78	95	68	74	1,061
1971	83	75	77	68	76	86	85	72	78	73	74	76	923
1972	61	62	75	82	75	71	98	85	83	62	80	81	915
1973	75	75	95	85	64	66	61	85	89	88	66	86	935
1974	56	62	81	60	70	73	67	62	53	70	80	72	806
1975	67	65	87	73	97	94	57	75	69	66	71	89	910
1976	79	78	88	78	69	79	60	70	82	78	77	100	938
1977	65	71	89	79	65	79	70	91	68	74	96	107	954
1978	75	54	95	63	64	69	68	77	65	84	83	72	869
1979	63	60	86	75	45	64	66	75	69	79	72	93	847
1980	48	55	66	59	47	56	60	53	45	58	61	49	657
1981	69	60	58	61	74	65	61	63	68	71	59	57	766
1982	55	53	59	59	67	45	47	71	53	69	65	66	709
1983	42	59	53	63	62	61	65	51	59	43	54	52	664
1984	65	48	58	50	56	48	46	50	71	53	55	58	658
1985	56	47	50	65	75	50	51	50	58	61	56	64	683
1986	56	50	70	69	59	53	42	54	54	52	59	51	669
1987	62	43	57	52	63	59	62	49	62	61	55	80	705
1988	49	58	69	54	79	50	54	52	64	59	43	70	701
1989	76	65	80	59	67	73	52	65	82	50	41	66	776
1990	48	44	55	39	56	64	41	34	48	35	40	44	548
1991	45	39	70	30	34	29	44	47	41	36	35	53	503
1992	34	33	34	47	33	29	23	27	28	38	30	40	396
1993	27	40	37	39	44	33	33	27	34	39	43	40	436
1994	36	31	44	35	27	33	29	37	17	27	32	30	378
1995	38	35	26	33	34	41	27	34	34	32	38	46	418
1996	40	47	35	38	28	29	30	35	49	24	33	30	418
1997	36	25	30	30	40	22	39	26	26	29	39	35	377
1998	29	29	32	36	31	22	40	19	37	36	49	30	390
1999	32	31	35	35	34	24	35	26	28	38	29	37	384
2000	32	26	46	32	39	32	33	29	36	29	44	29	407
2001	44	30	31	32	31	41	34	37	35	51	41	37	444
2002	32	31	45	31	45	32	27	25	31	30	31	37	397
2003	21	41	36	28	31	28	20	23	23	24	24	31	330
2004	32	22	30	30	46	28	27	26	22	28	25	27	343
2005	33	27	47	21	29	23	30	25	25	33	17	36	346
2006	24	37	23	23	27	23	25	22	43	20	31	39	337
2007	23	23	32	25	26	28	28	20	23	37	26	41	332
2008	28	20	37	25	25	20	27	27	18	25	26	25	303
2009	31	18	23	32	19	30	19	21	14	28	21	34	290
2010	26	25	23	20	31	26	26	18	17	36	12	28	288
2011	18	20	34	31	30	24	25	14	12	22	30	27	287
2012	30	20	25	19	23	22	17	25	17	34	26	24	282
2013	14	24	24	19	18	13	24	20	19	15	23	30	243
2014	25	21	25	14	23	17	22	21	20	19	28	14	249
2015	27												
Ave	48	46	56	54	53	51	51	50	49	50	49	55	613
Max	85	84	106	103	97	94	110	106	89	95	96	107	1,061
Min	14	18	23	14	18	13	17	14	12	15	12	14	243

Fatalities by Week (2009 to 2015)

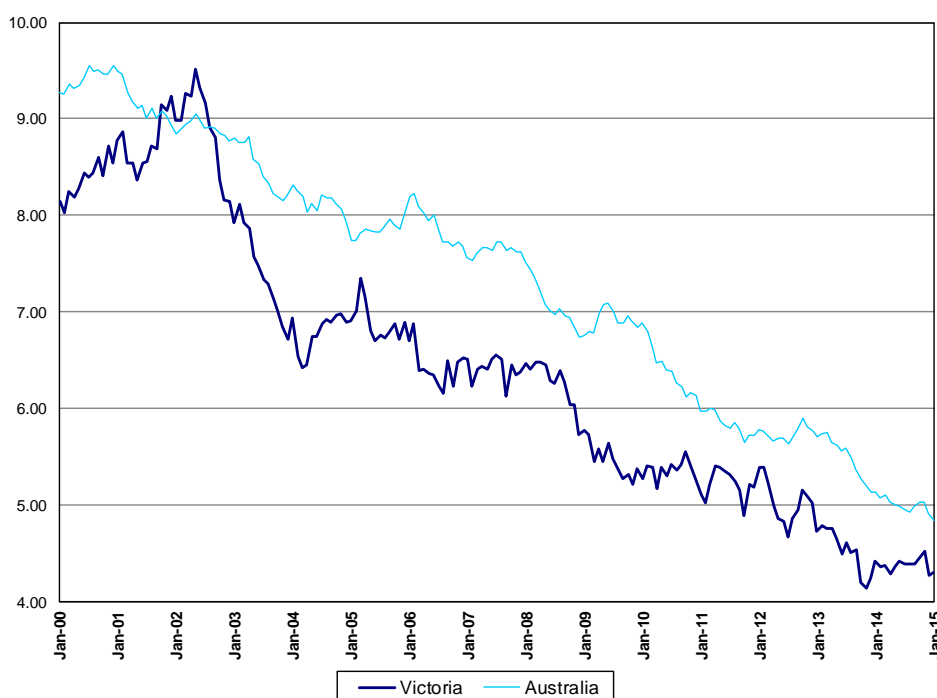
Week Ending	2009	2010	2011	2012	2013	2014	2015	Cumulative 2015	% Change 2015-2014	12 Month Moving Total
5-Jan	7	3	2	3	1	0	2	2	-	251
12-Jan	10	5	6	7	3	5	6	8	+60%	252
19-Jan	4	6	3	8	6	7	7	15	+25%	252
26-Jan	4	5	4	9	4	9	3	18	-14%	246
2-Feb	6	9	6	5	3	6				
9-Feb	6	7	5	3	8	4				
16-Feb	7	4	6	7	6	8				
23-Feb	4	8	3	6	6	2				
2-Mar	1	7	3	2	2	6				
9-Mar	3	2	10	3	4	8				
16-Mar	6	8	6	11	6	4				
23-Mar	6	3	9	5	10	4				
30-Mar	8	7	9	6	2	6				
6-Apr	5	4	6	7	4	6				
13-Apr	5	5	9	2	6	6				
20-Apr	11	7	7	6	4	2				
27-Apr	9	1	6	3	5	2				
4-May	6	6	6	10	6	3				
11-May	7	8	6	2	3	4				
18-May	1	4	7	4	1	3				
25-May	2	11	10	6	2	5				
1-Jun	6	5	5	2	9	9				
8-Jun	4	7	4	8	2	2				
15-Jun	9	4	6	3	3	2				
22-Jun	7	8	7	8	5	3				
29-Jun	9	7	6	3	1	8				
6-Jul	3	7	4	2	5	6				
13-Jul	6	2	8	5	7	7				
20-Jul	4	3	6	5	4	3				
27-Jul	5	8	6	5	5	4				
3-Aug	4	10	3	1	8	4				
10-Aug	7	3	5	5	1	5				
17-Aug	6	5	3	5	3	6				
24-Aug	3	5	2	6	6	4				
31-Aug	3	1	3	8	5	5				
7-Sep	2	5	1	5	5	4				
14-Sep	4	1	4	6	2	6				
21-Sep	4	4	1	3	3	4				
28-Sep	3	5	5	3	8	3				
5-Oct	2	9	4	7	3	4				
12-Oct	6	10	5	8	2	8				
19-Oct	8	5	3	9	3	0				
26-Oct	8	7	3	6	3	8				
2-Nov	5	8	8	6	6	2				
9-Nov	3	1	6	7	8	3				
16-Nov	9	2	12	6	2	8				
23-Nov	6	3	9	5	8	3				
30-Nov	4	5	2	9	4	13				
7-Dec	5	4	10	7	6	5				
14-Dec	8	8	3	4	10	3				
21-Dec	11	6	7	1	9	3				
28-Dec	6	8	6	8	4	3				
31-Dec	2	2	1	1	1	1				
Total	290	288	287	282	243	249				

The National Picture

State	Fatalities (12 months to January)					2015 v 2014	
	2015	2014	2013	2012			
NSW	316	352	352	368	-36	(-10%)	
VIC	251	254	266	299	-3	(-1%)	
QLD	221	257	287	277	-36	(-14%)	
SA	113	96	98	97	+17	(+18%)	
WA	190	148	195	176	+42	(+28%)	
TAS	35	37	32	23	-2	(-5%)	
NT	37	38	48	48	-1	(-3%)	
ACT	11	6	13	4	+5	(+83%)	
AUST TOTAL	1,138	1,188	1,291	1,292	-50	(-4%)	
AUST minus VIC	887	934	1,025	993	-47	(-5%)	

State	Fatalities per 10,000 registered vehicles (12 months to January)			Fatalities per 100,000 population (12 months to January)		
	2015	2014	2013	2015	2014	2013
NSW	0.61	0.70	0.71	4.20	4.75	4.82
VIC	0.55	0.57	0.61	4.29	4.42	4.72
QLD	0.59	0.70	0.81	4.67	5.51	6.28
SA	0.84	0.73	0.76	6.70	5.74	5.92
WA	0.87	0.71	0.97	7.37	5.87	8.00
TAS	0.79	0.84	0.74	6.80	7.21	6.25
NT	2.40	2.53	3.31	15.07	15.84	20.41
ACT	0.39	0.22	0.48	2.85	1.56	3.46
AUST TOTAL	0.64	0.68	0.76	4.84	5.13	5.71
AUST minus VIC	0.67	0.72	0.81	4.97	5.36	6.02

Deaths per 100,000 population, Victoria v Australia 2000 - 2015



Victoria v Australia - 12 Month Moving Fatality Rate

Booze-Bus Random Breath Testing

12 months to December 2014 (monthly totals)

2014												
	Jan	Feb	Mar	Apr	May	Jun	Jul	Aug	Sep	Oct	Nov	Dec
Melbourne	110,393	93,988	106,404	96,725	107,794	103,200	110,427	110,124	101,857	100,252	86,261	99,008
Country	6,904	4,841	15,303	9,737	12,033	7,548	9,300	7,841	7,989	8,116	10,510	7,084
Vic Total	117,297	98,829	121,707	106,462	119,827	110,748	119,727	117,965	109,846	108,368	96,771	106,092

12 months to December 2014 vs previous 12 months

	2014	2013	2012	2014 v 2013		2014 v 2012	
Melbourne	1,226,433	1,008,694	1,059,920	+217739	(+22%)	+166513	(+16%)
Country	107,206	85,810	110,484	+21396	(+25%)	-3278	(-3%)
Vic Total	1,333,639	1,094,504	1,170,404	+239135	(+22%)	+163235	(+14%)

Mobile Safety Camera Data

Speed Infringements Issued from Mobile Cameras (monthly totals)

Monthly Average = 35,454

2014

Jan	Feb	Mar	Apr	May	Jun	Jul	Aug	Sep	Oct	Nov	Dec
43,483	33,876	33,569	29,399	44,981	34,108	42,640	34,202	32,625	35,422	32,416	28,732

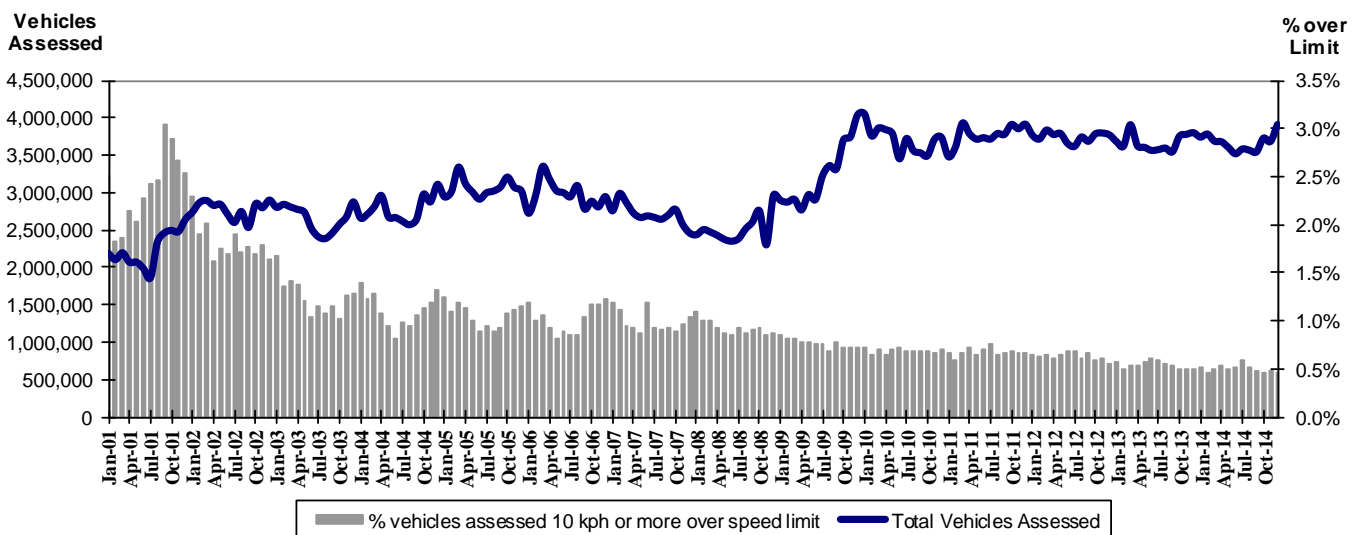
Excessive Speed Infringements (ESI) Issued from Mobile Cameras (monthly totals)

Monthly Average = 314

2014

Jan	Feb	Mar	Apr	May	Jun	Jul	Aug	Sep	Oct	Nov	Dec
366	314	270	252	366	316	390	317	292	334	287	258

Notes: An ESI is defined as 25km/h over the speed limit except in a 110km/h zone where it is 20km/h over the limit.



Mobile Safety Cameras – Vehicles assessed and percentage of vehicles assessed 10km/h or more over speed limit per month

Explanations and References

Hi-AlcTime is those times of the day and week (*shaded* in the table below) when casualty crashes are ten times more likely to involve alcohol than casualty crashes at other (Lo-AlcTime) times.

	12am - 6am	6am - 8am	8am - 10am	10am - 2pm	2pm - 4pm	4pm - 6pm	6pm - 12pm
Monday							
Tuesday							
Wednesday							
Thursday							
Friday							
Saturday							
Sunday							

Police Service Areas align with Local Government Areas. Most Police Service Areas are equivalent to a single Local Government Area, while the remainder comprise two or three Local Government Areas.

Police Service Area	Local Government Area(s)	Police Service Area	Local Government Area(s)
BALLARAT	BALLARAT, PYRENEES	MAROONDAH	MAROONDAH
BANYULE	BANYULE	MELBOURNE	MELBOURNE
BASS COAST	BASS COAST, SOUTH GIPPSLAND	MELTON	MELTON
BAW BAW	BAWBAW	MILDURA	MILDURA
BENALLA	BENALLA, MANSFIELD, MURRINDINDI	MITCHELL	MITCHELL, STRATHBOGIE
BENDIGO	GREATER BENDIGO	MONASH	MONASH
BOROONDARA	BOROONDARA	MOONEE VALLEY	MOONEE VALLEY
BRIMBANK	BRIMBANK	MOORABOOL	GOLDEN PLAINS, HEPBURN, MOORABOOL
CAMPASPE	CAMPASPE	MORELAND	MORELAND
CARDINIA	CARDINIA	MORNINGTON PENINSULA	MORNINGTON PENINSULA
CASEY	CASEY	NILLUMBIK	NILLUMBIK
CENTRAL GOLDFIELDS	CENTRAL GOLDFIELDS, LODDON	NORTHERN GRAMPIANS	ARARAT, NORTHERN GRAMPIANS, YARRIAMIACK
GREATER DANDENONG	GREATER DANDENONG	PORT PHILLIP	PORT PHILLIP
DAREBIN	DAREBIN	SHEPPARTON	GREATER SHEPPARTON
EAST GIPPSLAND	EAST GIPPSLAND	SOUTHERN GRAMPIANS	GLENELG, SOUTHERN GRAMPIANS
FRANKSTON	FRANKSTON	STONNINGTON	STONNINGTON
GEELONG	GREATER GEELONG, QUEENSCLIFF	SURFCOAST	SURFCOAST, COLAC OTWAY
GLENEIRA	GLENEIRA, BAYSIDE	SWANHILL	BULOKE, GANNAWARRA, SWAN HILL
HOBSONS BAY	HOBSONSBAY	WANGARATTA	ALPINE, MOIRA, WANGARATTA
HORSHAM	HINDMARSH, HORSHAM, WESTWIMMERA	WARRNAMBOOL	CORANGAMITE, MOYNE, WARRNAMBOOL
HUME	HUME	WELLINGTON	WELLINGTON
KINGSTON	KINGSTON	WHITEHORSE	WHITEHORSE
KNOX	KNOX	WHITTLESEA	WHITTLESEA
LATROBE	LATROBE	WODONGA	INDIGO, TOWONG, WODONGA
MACEDON RANGES	MOUNT ALEXANDER, MACEDON RANGES	WYNDHAM	WYNDHAM
MANNINGHAM	MANNINGHAM	YARRA	YARRA
MARIBYRNONG	MARIBYRNONG	YARRA RANGES	YARRA RANGES

Useful Internet Sites

TAC Sites

- TAC Safety (Road Safety) www.tacsafety.com.au
- TAC How safe is your car www.howsafeisyourcar.com.au
- TAC Learners Log www.learnerslog.com.au
- TAC Motorcycle Safety Website www.spokes.com.au
- TAC Corporate site www.tac.vic.gov.au

Victorian Sites:

- VicRoads www.vicroads.vic.gov.au
- Victoria Police www.police.vic.gov.au
- Parliamentary Road Safety Committee www.parliament.vic.gov.au/rsc/
- ARRB Transport Research www.arrb.com.au
- RACV www.racv.com.au
- Monash University Accident Research Centre www.monash.edu.au/muarc
- Roadsafe www.roadsafe.org.au
- Cameras Save Lives www.camerassavelives.vic.gov.au

National and Interstate Sites:

- Australian Transport Safety Bureau www.atsb.gov.au
- Roads and Traffic Authority (NSW) www.rta.nsw.gov.au
- Queensland Transport - Road Safety transport.qld.gov.au/Home/Safety/Road
- Department of Transport (SA) www.transport.sa.gov.au/index.htm
- Main Roads Western Australia - Road Safety www.mrwa.wa.gov.au

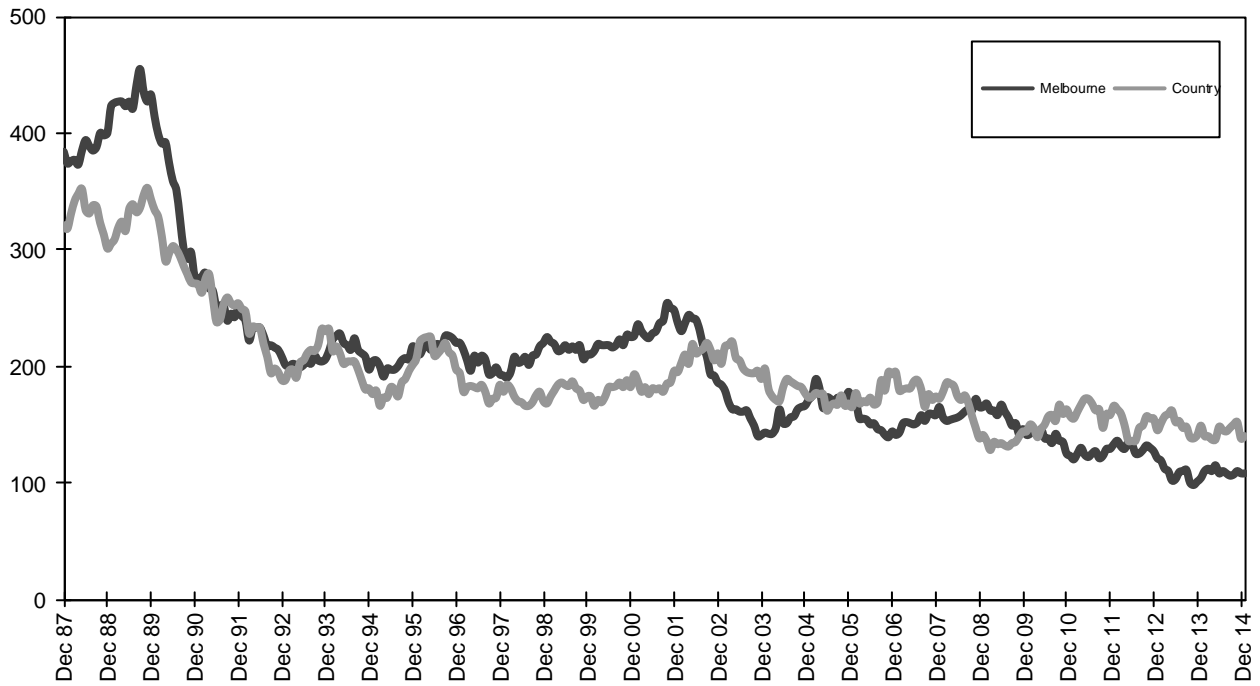
International Sites:

- National Highway Traffic Safety Admin (USA) www.nhtsa.dot.gov
- Swedish Road and Transport Institute (VTI) www.vti.se
- SWOV Institute for Road Safety Research www.swov.nl

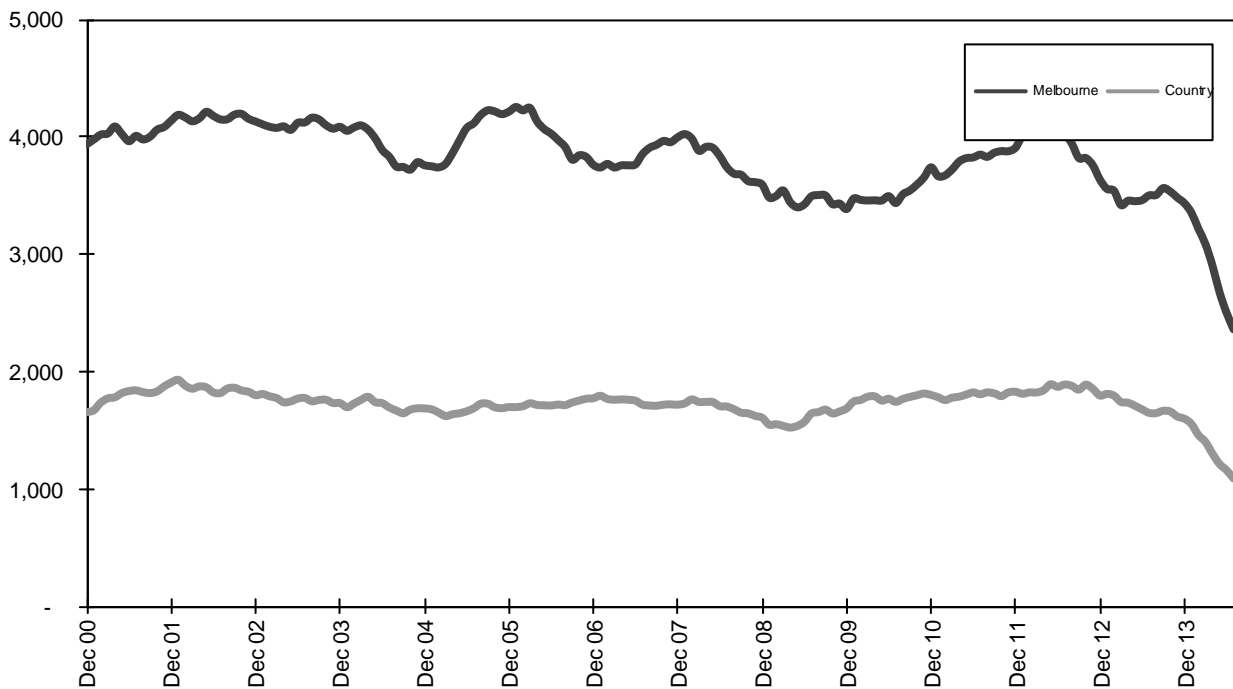
Related Sites:

- Australian Drug Foundation www.adf.org.au
- Amy Gillett Foundation www.amygillett.org.au

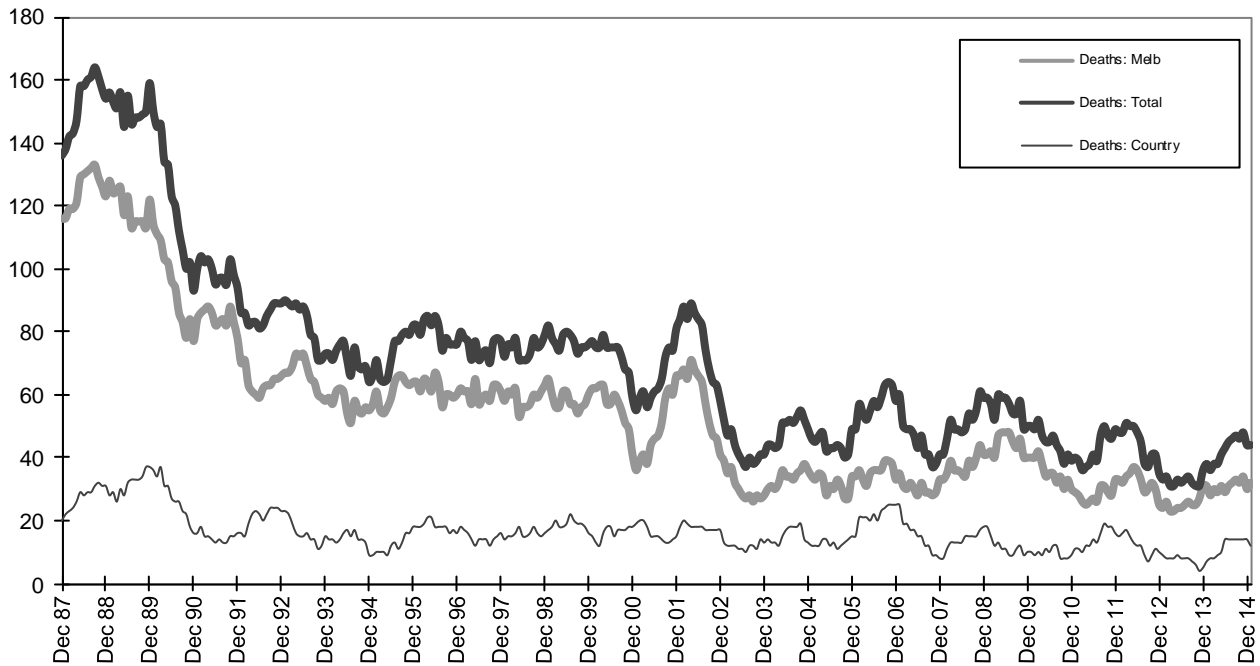
Figures



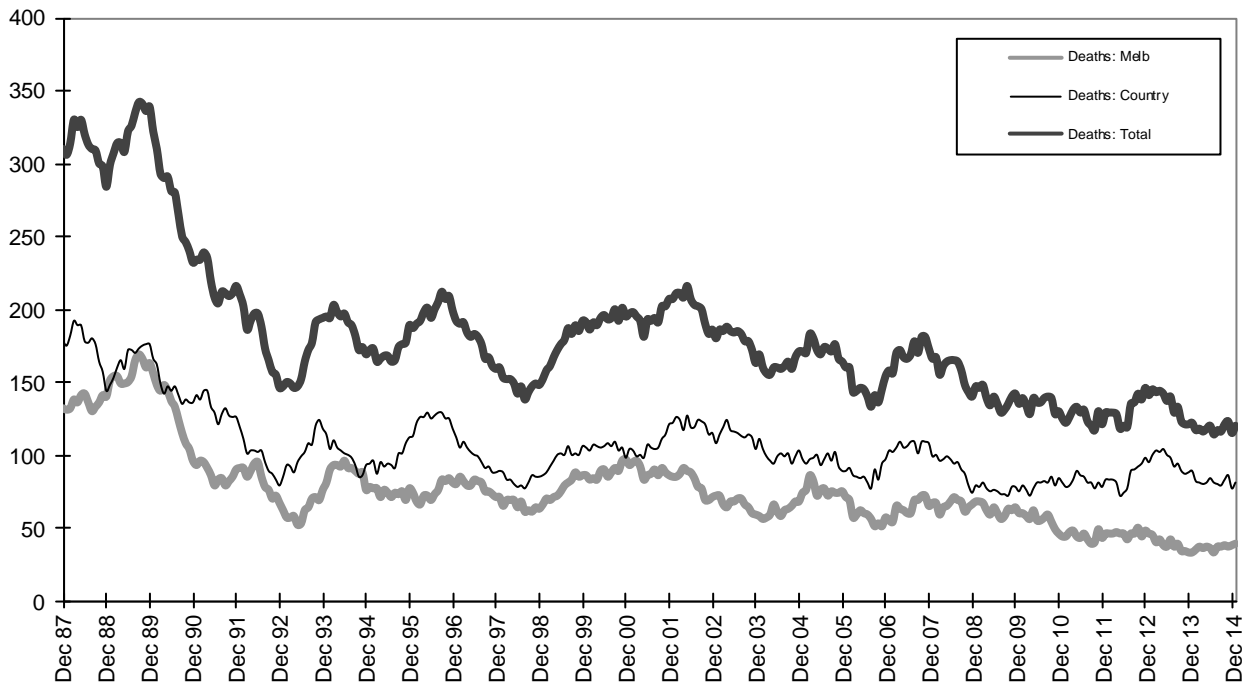
Graph 1a - Melbourne/country fatalities



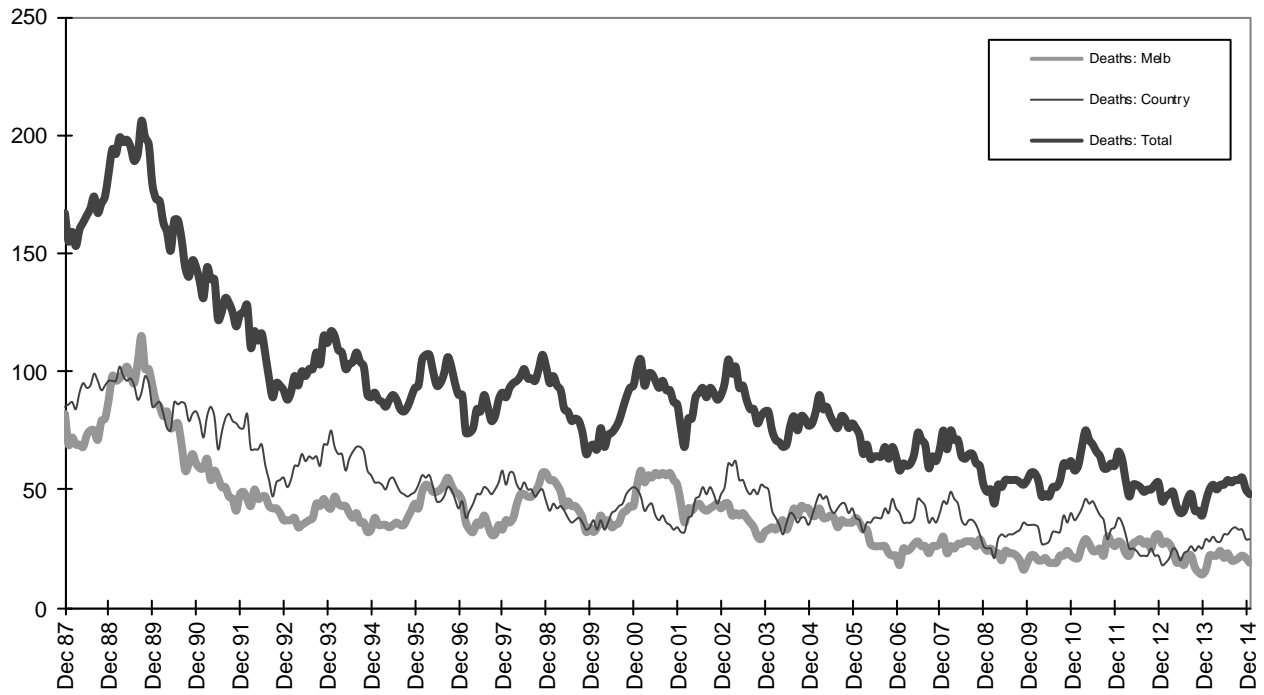
Graph 1b - Melbourne/country Claims involving an acute hospital admission



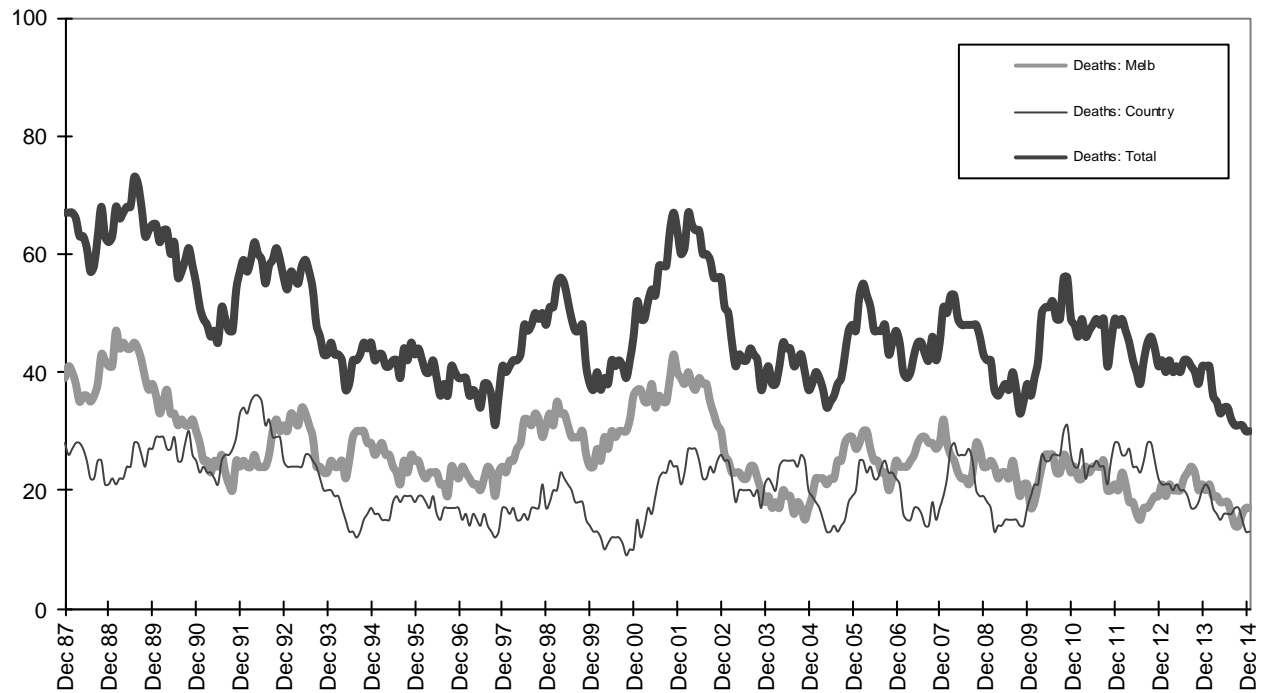
Graph 2a - Pedestrian fatalities (Melbourne/country)



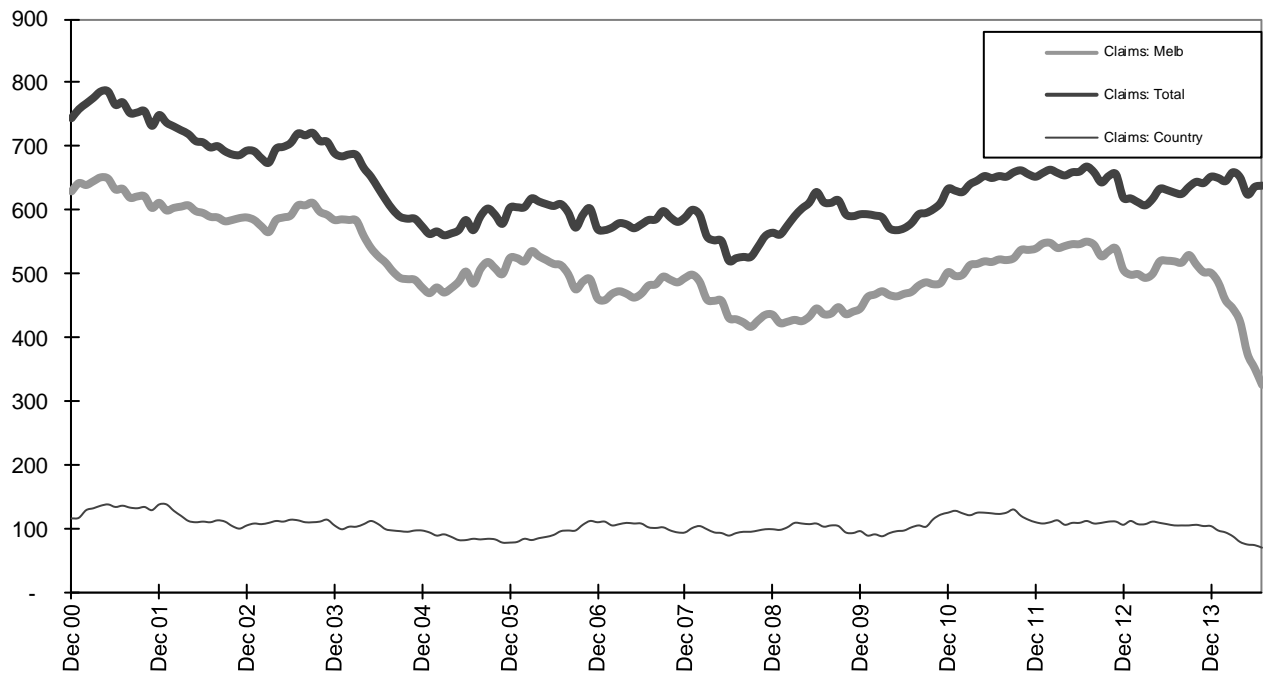
Graph 2b - Driver fatalities (Melbourne/country)



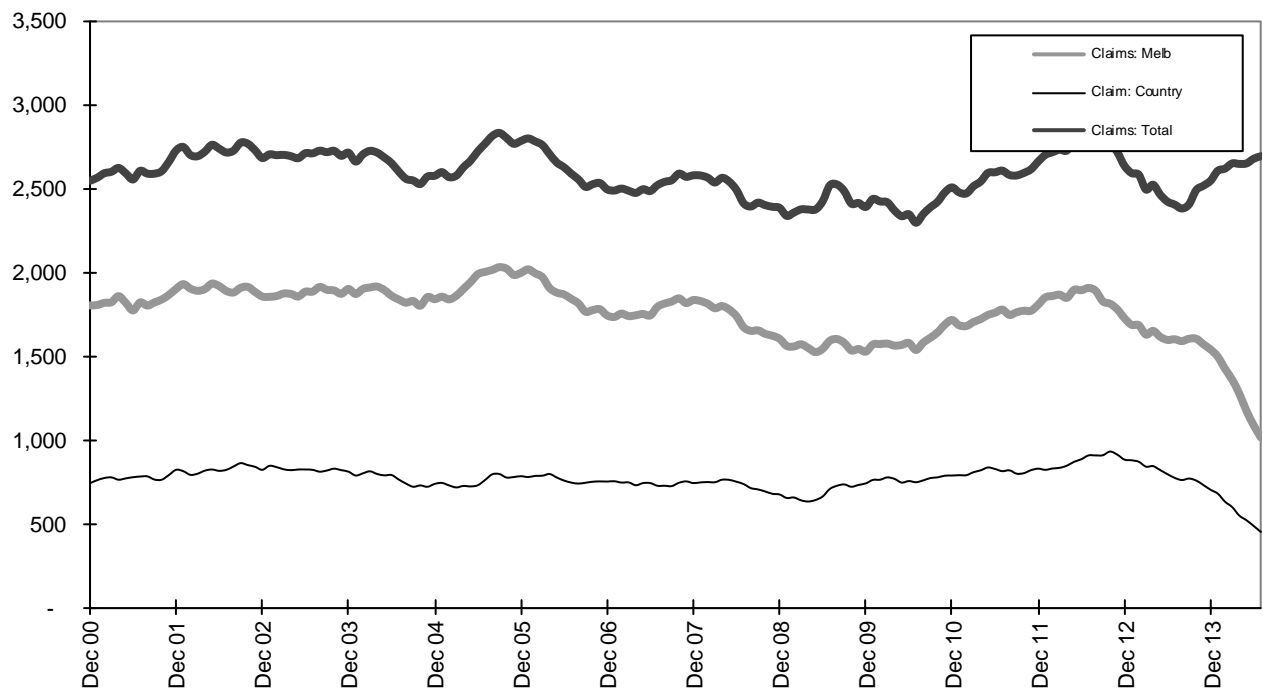
Graph 2c - Passenger fatalities (Melbourne/country)



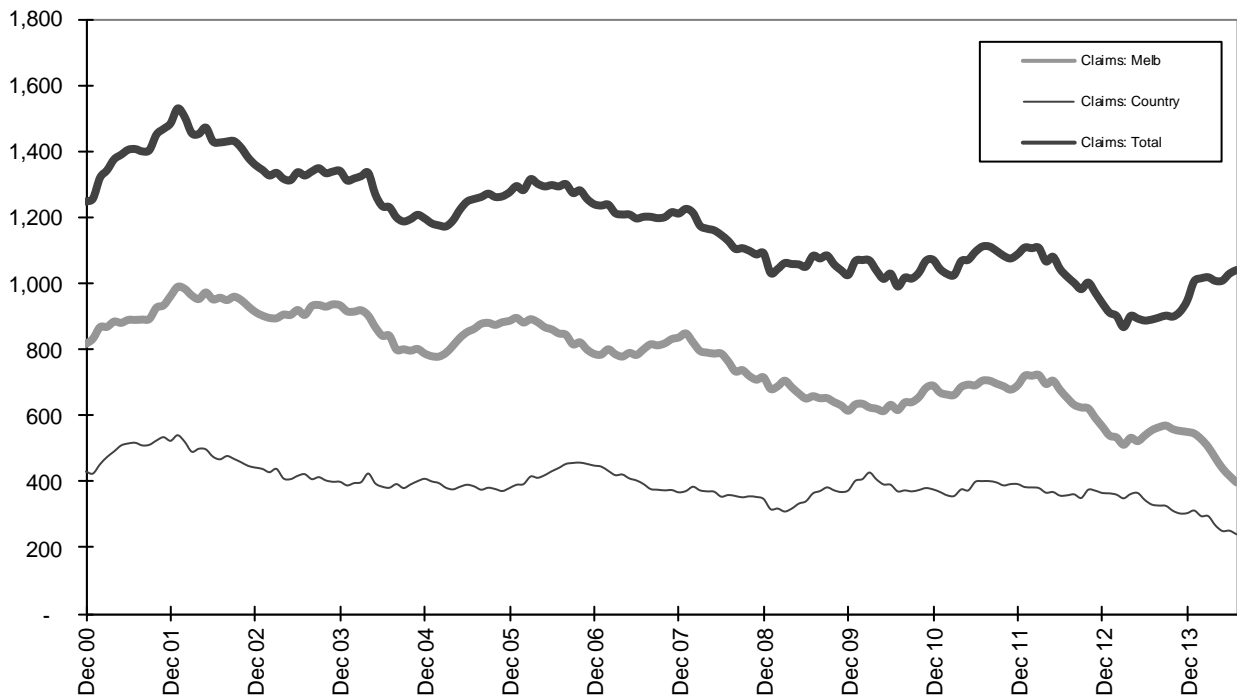
Graph 2d - Motorcyclist fatalities (Melbourne/country)



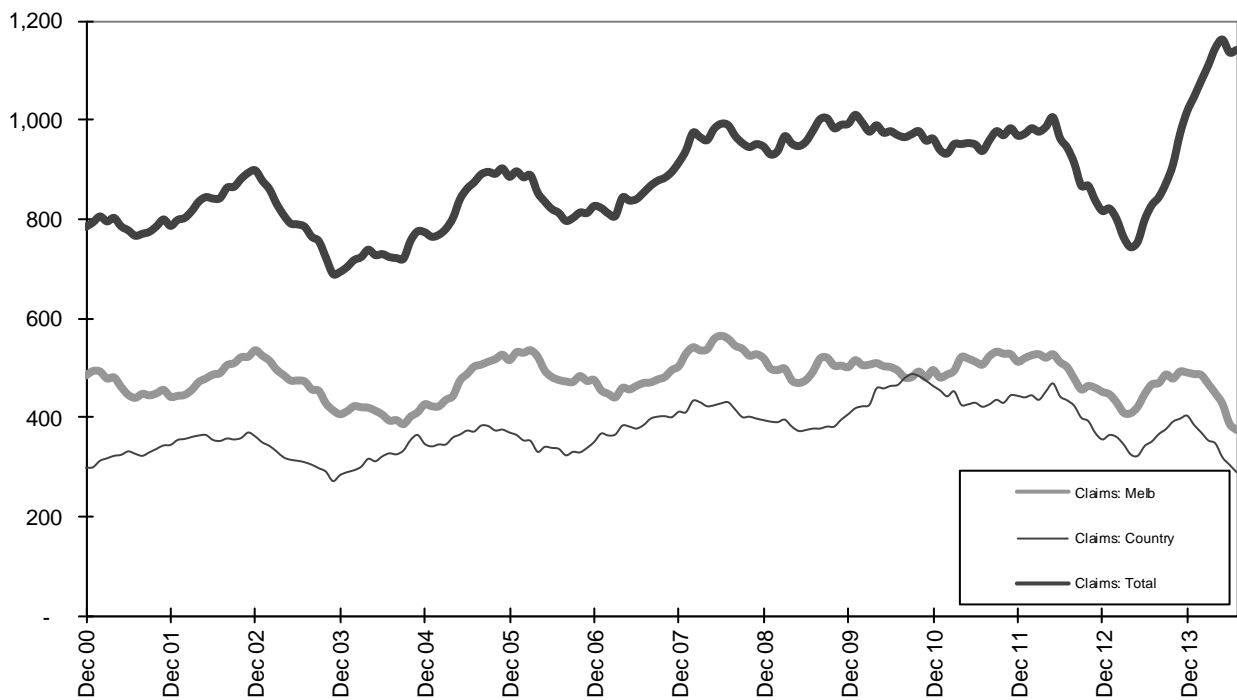
Graph 3a - Pedestrian Claims involving an acute hospital admission (Melbourne/country)



Graph 3b - Driver Claims involving an acute hospital admission (Melbourne/country)



Graph 3c - Passenger Claims involving an acute hospital admission (Melbourne/country)



Graph 3d - Motorcyclist Claims involving an acute hospital admission (Melbourne/country)