



ROAD SAFETY STATISTICAL SUMMARY DECEMBER 2010



TRANSPORT
ACCIDENT
COMMISSION

60 Brougham Street
Geelong Vic 3220
PO Box 742
Geelong Vic 3220
Ausdoc DX 216079 Geelong

Telephone 1300 654 329
STD Toll Free 1800 332 556
Fax: 03 9656 9300
www.tac.vic.gov.au
ABN 22 033 947 623



Contents

Status Report	3
Road Toll (updated snapshot)	
Tables	4-7
Fatalities (rolling 12 month)	
Claims involving hospitalisation (rolling 12 month)	
Overview	
Sex	
Road user	
Location	
Age Group	
Alctime	
Accident Type	
Police Service Area	
Victorian Road Deaths – monthly totals since 1951	8
Fatalities by Week (2005 to 2010)	9
Alcohol Related Deaths	10
The National Picture	11
Police Enforcement	12
Explanations and References	13-14
Alcohol times (“Alctime”) explained	
Police Service Areas	
Useful internet sites	
Graphs (12 month moving totals)	15-19

Note about the data in this report

- All data provided in this report is the data most recently available at time of production. Typically, fatalities data is updated to the end of report month. Similarly, breath test data and safety camera data is updated to the end of the report month. A 6-month lag applies to TAC claims data, a 2-month lag applies to alcohol related fatalities data.

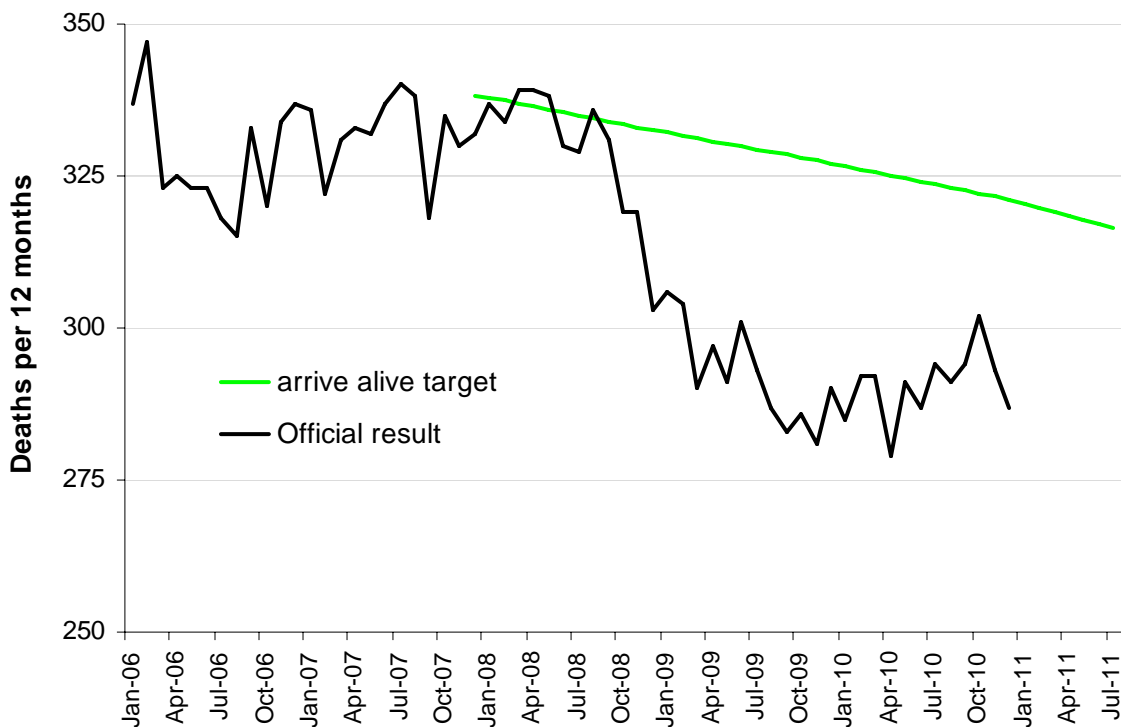
Status Report – Road Toll

Road Toll (year to date, accurate as at midnight 31 December 2010)

- The road toll in 2010 was 287, 1% less than in 2009 (290).
- 12 people died in November and 28 in December on Victorian roads. This compares to 21 in November 2009 and 34 in December 2009. The 12 deaths in November is the lowest monthly total since records commenced in 1951.

Category	2010	2009	2008	2010 v 2009		2010 v 2008		5 Year Av
Casualties (Rolling 12 Month Total)								
Fatal (to December)	287	290	303	-3	(-1%)	-16	(-5%)	310
per 10,000 veh	0.70	0.72	0.77	-0.02	(-3%)	-0.07	(-9%)	0.81
per 100,000 pop	5.17	5.34	5.72	-0.17	(-3%)	-0.55	(-10%)	5.99
Accidents (Rolling 12 Month Total)								
Fatal (to December)	259	268	278	-9	(-3%)	-19	(-7%)	281
per 10,000 veh	0.63	0.66	0.70	-0.03	(-5%)	-0.07	(-10%)	0.73
per 100,000 pop	4.67	4.94	5.25	-0.27	(-5%)	-0.58	(-11%)	5.43

Victoria – Fatalities, rolling 12 months total



Note: Data is subject to revision as additional information about known accidents is received, and as new accident reports are received and processed.

Fatalities: 12 months to December

Category	2010	2009	2008	2010 v 2009		2010 v 2008		5 Year Av
Overview								
Fatalities	287	290	303	-3	(-1%)	-16	(-5%)	310
Accidents	259	268	278	-9	(-3%)	-19	(-7%)	281
Sex								
Male	220	196	211	24	(12%)	9	(4%)	222
Female	67	94	92	-27	(-29%)	-25	(-27%)	88
Roaduser								
Bicyclist	8	6	9	2	(33%)	-1	(-11%)	9
Driver	130	142	140	-12	(-8%)	-10	(-7%)	148
Motorcyclist	49	38	43	11	(29%)	6	(14%)	44
Passenger	62	54	52	8	(15%)	10	(19%)	60
Pedestrian	38	50	59	-12	(-24%)	-21	(-36%)	49
Location								
Melbourne	124	146	166	-22	(-15%)	-42	(-25%)	148
Rural Victoria	163	144	137	19	(13%)	26	(19%)	162
Agegroup								
0-4	5	6	5	-1	(-17%)	0	(0%)	4
5-15	8	11	6	-3	(-27%)	2	(33%)	9
16-17	5	6	11	-1	(-17%)	-6	(-55%)	10
18-20	33	36	28	-3	(-8%)	5	(18%)	33
21-25	37	26	44	11	(42%)	-7	(-16%)	37
26-29	29	19	22	10	(53%)	7	(32%)	26
30-39	34	43	46	-9	(-21%)	-12	(-26%)	48
40-49	35	41	43	-6	(-15%)	-8	(-19%)	41
50-59	35	35	32	0	(0%)	3	(9%)	35
60-69	23	23	17	0	(0%)	6	(35%)	23
70+	43	44	49	-1	(-2%)	-6	(-12%)	45
Altime								
High (Melb)	70	76	81	-6	(-8%)	-11	(-14%)	79
High (Rural)	87	64	69	23	(36%)	18	(26%)	80
High (Vic)	157	140	150	17	(12%)	7	(5%)	159
Low (Melb)	54	70	85	-16	(-23%)	-31	(-36%)	68
Low (Rural)	76	80	68	-4	(-5%)	8	(12%)	82
Low (Vic)	130	150	153	-20	(-13%)	-23	(-15%)	151
Accident Type								
Intersection								
Adjacent direction	29	16	24	13	(81%)	5	(21%)	25
Opposing direction	5	7	7	-2	(-29%)	-2	(-29%)	9
Mid-block/other								
Head on	37	36	37	1	(3%)	0	(0%)	40
Same direction	21	17	17	4	(24%)	4	(24%)	18
Manoeuvre/o'taking	18	17	17	1	(6%)	1	(6%)	15
On path	10	5	6	5	(100%)	4	(67%)	7
Single vehicle	125	129	124	-4	(-3%)	1	(1%)	134
Other (incl peds)	42	63	71	-21	(-33%)	-29	(-41%)	62

Fatalities: 12 months to December

Category	2010	2009	2008	2010 v 2009		2010 v 2008		5 Year Av
Police Service Area (based on Local Government Area (see p.13))								
BALLARAT	5	5	6	0	(0%)	-1	(-17%)	5
BANYULE	3	2	2	1	(50%)	1	(50%)	2
BASS COAST	5	8	2	-3	(-38%)	3	(150%)	6
BAW BAW	12	5	5	7	(140%)	7	(140%)	8
BAYSIDE	1	1	3	0	(0%)	-2	(-67%)	2
BENALLA	10	8	11	2	(25%)	-1	(-9%)	10
BENDIGO	9	11	9	-2	(-18%)	0	(0%)	9
BOROONDARA	1	7	6	-6	(-86%)	-5	(-83%)	4
BRIMBANK	2	6	9	-4	(-67%)	-7	(-78%)	6
CAMPASPE	3	8	8	-5	(-63%)	-5	(-63%)	9
CARDINIA	7	4	4	3	(75%)	3	(75%)	5
CASEY	13	10	12	3	(30%)	1	(8%)	12
CENTRAL GOLDFIELDS	8	0	3	8		5	(167%)	5
CORANGAMITE	5	8	2	-3	(-38%)	3	(150%)	6
DANDENONG	4	8	8	-4	(-50%)	-4	(-50%)	6
DAREBIN	3	5	4	-2	(-40%)	-1	(-25%)	4
EAST GIPPSLAND	7	14	9	-7	(-50%)	-2	(-22%)	9
FRANKSTON	5	5	11	0	(0%)	-6	(-55%)	5
GEELONG	9	10	4	-1	(-10%)	5	(125%)	7
GLEN EIRA	2	5	3	-3	(-60%)	-1	(-33%)	4
HOBSONS BAY	1	1	3	0	(0%)	-2	(-67%)	3
HORSHAM	4	2	3	2	(100%)	1	(33%)	3
HUME	5	8	9	-3	(-38%)	-4	(-44%)	7
KINGSTON	3	4	8	-1	(-25%)	-5	(-63%)	5
KNOX	3	5	4	-2	(-40%)	-1	(-25%)	4
LA TROBE	5	5	6	0	(0%)	-1	(-17%)	6
MACEDON RANGES	7	7	7	0	(0%)	0	(0%)	7
MANNINGHAM	2	7	3	-5	(-71%)	-1	(-33%)	3
MARIBYRNONG	1	2	3	-1	(-50%)	-2	(-67%)	2
MAROONDAH	1	1	1	0	(0%)	0	(0%)	2
MELBOURNE	4	2	9	2	(100%)	-5	(-56%)	6
MELTON	6	7	3	-1	(-14%)	3	(100%)	5
MILDURA	4	4	6	0	(0%)	-2	(-33%)	6
MITCHELL	12	5	9	7	(140%)	3	(33%)	8
MONASH	1	9	4	-8	(-89%)	-3	(-75%)	6
MOONEE VALLEY	2	3	4	-1	(-33%)	-2	(-50%)	4
MOORABOOL	9	3	8	6	(200%)	1	(13%)	6
MORELAND	6	2	5	4	(200%)	1	(20%)	4
MORNINGTON PENINSULA	9	6	14	3	(50%)	-5	(-36%)	10
NILLUMBIK	1	2	0	-1	(-50%)	1		1
NORTHERN GRAMPIANS	4	4	2	0	(0%)	2	(100%)	4
PORT PHILLIP	3	1	2	2	(200%)	1	(50%)	2
SHEPPARTON	4	7	3	-3	(-43%)	1	(33%)	7
SOUTHERN GRAMPIANS	4	8	3	-4	(-50%)	1	(33%)	6
STONNINGTON	0	0	1	0		-1	(-100%)	1
SURF COAST	5	1	7	4	(400%)	-2	(-29%)	4
SWAN HILL	7	2	6	5	(250%)	1	(17%)	10
WANGARATTA	8	10	5	-2	(-20%)	3	(60%)	7
WARRNAMBOOL	7	2	2	5	(250%)	5	(250%)	5
WELLINGTON	4	3	10	1	(33%)	-6	(-60%)	6
WHITEHORSE	5	5	3	0	(0%)	2	(67%)	4
WHITTLESEA	15	6	6	9	(150%)	9	(150%)	8
WODONGA	6	4	1	2	(50%)	5	(500%)	5
WYNDHAM	4	4	8	0	(0%)	-4	(-50%)	5
YARRA	5	3	2	2	(67%)	3	(150%)	4
YARRA RANGES	6	15	12	-9	(-60%)	-6	(-50%)	11

Claims involving hospital admission: 12 months to June (claim acceptance date)

Category	2010	2009	2008	2010 v 2009	2010 v 2008	5 Year Av
Overview						
Hospital admission claims	5,303	5,607	5,714	-304 (-5%)	-411 (-7%)	5586
Sex						
Male	3,090	3,289	3,374	-199 (-6%)	-284 (-8%)	3248
Female	2,210	2,318	2,340	-108 (-5%)	-130 (-6%)	2338
Roaduser						
Bicyclist	325	302	292	23 (8%)	33 (11%)	296
Driver	2,339	2,416	2,486	-77 (-3%)	-147 (-6%)	2471
Motorcyclist	971	955	992	16 (2%)	-21 (-2%)	916
Passenger	1,021	1,038	1,144	-17 (-2%)	-123 (-11%)	1140
Pedestrian	574	624	520	-50 (-8%)	54 (10%)	580
Tram/train	16	24	3	-8 (-33%)	13 (433%)	11
Location						
Melbourne	3,475	3,398	3,828	77 (2%)	-353 (-9%)	3699
Rural Victoria	1784	1594	1706	190 (12%)	78 (5%)	1711
Agegroup						
0-4	44	55	46	-11 (-20%)	-2 (-4%)	50
5-15	223	197	238	26 (13%)	-15 (-6%)	228
16-17	141	154	167	-13 (-8%)	-26 (-16%)	167
18-20	538	615	629	-77 (-13%)	-91 (-14%)	607
21-25	654	703	784	-49 (-7%)	-130 (-17%)	734
26-29	427	427	428	0 (0%)	-1 (-0%)	435
30-39	887	966	942	-79 (-8%)	-55 (-6%)	957
40-49	768	820	829	-52 (-6%)	-61 (-7%)	807
50-59	630	624	650	6 (1%)	-20 (-3%)	612
60-69	392	435	449	-43 (-10%)	-57 (-13%)	408
70+	599	611	552	-12 (-2%)	47 (9%)	580
Altime						
High (Melb)	1533	1602	1719	-69 (-4%)	-186 (-11%)	1705
High (Rural)	810	706	735	104 (15%)	75 (10%)	741
High (Vic)	2365	2644	2592	-279 (-11%)	-227 (-9%)	2549
Low (Melb)	1942	1796	2109	146 (8%)	-167 (-8%)	1994
Low (Rural)	974	888	971	86 (10%)	3 (0%)	970
Low (Vic)	2938	2963	3122	-25 (-1%)	-184 (-6%)	3037
Accident Type						
Intersection						
Adjacent direction	810	868	847	-58 (-7%)	-37 (-4%)	853
Opposing direction	446	422	460	24 (6%)	-14 (-3%)	438
Mid-block/other						
Head on	291	342	325	-51 (-15%)	-34 (-10%)	313
Same direction	768	780	793	-12 (-2%)	-25 (-3%)	759
Manoeuvre/o'taking	300	336	313	-36 (-11%)	-13 (-4%)	299
On path	221	214	193	7 (3%)	28 (15%)	199
Single vehicle	1627	1616	1718	11 (1%)	-91 (-5%)	1654
Other (incl peds)	840	1001	671	-161 (-16%)	169 (25%)	774

Note: excludes rejected claims and claims for interstate crashes

Claims involving hospital admission: 12 months to June (claim acceptance date)

Category	2010	2009	2008	2010 v 2009		2010 v 2008		5 Year Av
Police Service Area (based on Local Government Area (see p.13))								
BALLARAT	74	79	65	-5	(-6%)	9	(14%)	68
BANYULE	60	64	65	-4	(-6%)	-5	(-8%)	65
BASS COAST	78	58	100	20	(34%)	-22	(-22%)	85
BAW BAW	46	39	44	7	(18%)	2	(5%)	45
BAYSIDE	63	70	52	-7	(-10%)	11	(21%)	68
BENALLA	124	76	92	48	(63%)	32	(35%)	88
BENDIGO	84	91	85	-7	(-8%)	-1	(-1%)	86
BOROONDARA	139	121	131	18	(15%)	8	(6%)	139
BRIMBANK	115	156	179	-41	(-26%)	-64	(-36%)	154
CAMPASPE	79	62	74	17	(27%)	5	(7%)	82
CARDINIA	80	92	91	-12	(-13%)	-11	(-12%)	81
CASEY	239	185	234	54	(29%)	5	(2%)	223
CENTRAL GOLDFIELDS	29	20	19	9	(45%)	10	(53%)	20
CORANGAMITE	75	65	59	10	(15%)	16	(27%)	66
DANDENONG	184	132	179	52	(39%)	5	(3%)	175
DAREBIN	107	96	113	11	(11%)	-6	(-5%)	107
EAST GIPPSLAND	56	41	56	15	(37%)	0	(0%)	54
FRANKSTON	137	143	131	-6	(-4%)	6	(5%)	135
GEELONG	214	231	227	-17	(-7%)	-13	(-6%)	232
GLEN EIRA	101	90	106	11	(12%)	-5	(-5%)	104
HOBSONS BAY	58	55	85	3	(5%)	-27	(-32%)	69
HORSHAM	30	17	26	13	(76%)	4	(15%)	33
HUME	146	139	176	7	(5%)	-30	(-17%)	157
KINGSTON	134	131	142	3	(2%)	-8	(-6%)	136
KNOX	111	118	145	-7	(-6%)	-34	(-23%)	130
LA TROBE	61	43	59	18	(42%)	2	(3%)	55
MACEDON RANGES	89	67	73	22	(33%)	16	(22%)	76
MANNINGHAM	68	63	82	5	(8%)	-14	(-17%)	72
MARIBYRNONG	67	70	75	-3	(-4%)	-8	(-11%)	73
MAROONDAH	75	67	65	8	(12%)	10	(15%)	72
MELBOURNE	193	181	158	12	(7%)	35	(22%)	188
MELTON	52	39	57	13	(33%)	-5	(-9%)	47
MILDURA	25	30	30	-5	(-17%)	-5	(-17%)	32
MITCHELL	116	97	124	19	(20%)	-8	(-6%)	112
MONASH	143	155	176	-12	(-8%)	-33	(-19%)	162
MOONEE VALLEY	85	105	102	-20	(-19%)	-17	(-17%)	110
MOORABOOL	91	124	91	-33	(-27%)	0	(0%)	88
MORELAND	119	118	159	1	(1%)	-40	(-25%)	136
MORNINGTON PENINSULA	143	160	165	-17	(-11%)	-22	(-13%)	171
NILLUMBIK	31	33	30	-2	(-6%)	1	(3%)	31
NORTHERN GRAMPIANS	28	33	45	-5	(-15%)	-17	(-38%)	38
PORT PHILLIP	95	113	148	-18	(-16%)	-53	(-36%)	132
SHEPPARTON	62	86	69	-24	(-28%)	-7	(-10%)	83
SOUTHERN GRAMPIANS	35	35	44	0	(0%)	-9	(-20%)	39
STONNINGTON	110	105	115	5	(5%)	-5	(-4%)	115
SURF COAST	41	59	38	-18	(-31%)	3	(8%)	50
SWAN HILL	45	38	42	7	(18%)	3	(7%)	44
WANGARATTA	77	55	69	22	(40%)	8	(12%)	65
WARRNAMBOOL	61	30	34	31	(103%)	27	(79%)	44
WELLINGTON	77	55	59	22	(40%)	18	(31%)	62
WHITEHORSE	120	110	136	10	(9%)	-16	(-12%)	136
WHITTLESEA	125	113	108	12	(11%)	17	(16%)	111
WODONGA	65	43	78	22	(51%)	-13	(-17%)	56
WYNDHAM	90	113	122	-23	(-20%)	-32	(-26%)	114
YARRA	105	93	92	12	(13%)	13	(14%)	93
YARRA RANGES	202	184	213	18	(10%)	-11	(-5%)	201

Victorian Road Deaths: monthly totals since 1951

Year	Jan	Feb	Mar	Apr	May	Jun	Jul	Aug	Sep	Oct	Nov	Dec	Totals
1951							61	59	52	38	29	41	
1952	45	40	54	61	54	69	67	55	44	44	31	20	584
1953	23	28	54	58	49	42	50	37	44	27	36	32	480
1954	44	42	28	60	55	36	63	33	25	52	30	41	509
1955	44	36	45	55	48	56	64	44	44	32	40	40	548
1956	34	48	51	67	53	65	71	47	39	39	44	48	606
1957	50	41	46	58	52	54	57	53	51	46	32	49	589
1958	50	38	42	58	54	41	54	53	57	40	57	52	596
1959	50	57	61	50	75	55	42	48	52	55	63	63	671
1960	49	53	57	76	70	70	67	62	61	77	52	66	760
1961	63	57	68	74	58	68	78	82	59	62	60	65	794
1962	65	41	76	78	72	80	70	77	62	53	64	70	808
1963	67	56	65	85	66	68	77	55	55	58	61	67	780
1964	73	71	78	71	83	89	80	89	67	66	62	75	904
1965	63	64	86	88	80	87	79	69	81	77	68	87	929
1966	75	59	75	103	74	86	87	80	75	66	90	85	955
1967	61	79	91	97	81	71	59	67	70	68	60	83	887
1968	70	78	86	78	73	76	73	77	72	80	81	105	949
1969	79	68	79	87	86	77	87	83	87	83	94	101	1,011
1970	85	84	106	80	87	88	110	106	78	95	68	74	1,061
1971	83	75	77	68	76	86	85	72	78	73	74	76	923
1972	61	62	75	82	75	71	98	85	83	62	80	81	915
1973	75	75	95	85	64	66	61	85	89	88	66	86	935
1974	56	62	81	60	70	73	67	62	53	70	80	72	806
1975	67	65	87	73	97	94	57	75	69	66	71	89	910
1976	79	78	88	78	69	79	60	70	82	78	77	100	938
1977	65	71	89	79	65	79	70	91	68	74	96	107	954
1978	75	54	95	63	64	69	68	77	65	84	83	72	869
1979	63	60	86	75	45	64	66	75	69	79	72	93	847
1980	48	55	66	59	47	56	60	53	45	58	61	49	657
1981	69	60	58	61	74	65	61	63	68	71	59	57	766
1982	55	53	59	59	67	45	47	71	53	69	65	66	709
1983	42	59	53	63	62	61	65	51	59	43	54	52	664
1984	65	48	58	50	56	48	46	50	71	53	55	58	658
1985	56	47	50	65	75	50	51	50	58	61	56	64	683
1986	56	50	70	69	59	53	42	54	54	52	59	51	669
1987	62	43	57	52	63	59	62	49	62	61	55	80	705
1988	49	58	69	54	79	50	54	52	64	59	43	70	701
1989	76	65	80	59	67	73	52	65	82	50	41	66	776
1990	48	44	55	39	56	64	41	34	48	35	40	44	548
1991	45	39	70	30	34	29	44	47	41	36	35	53	503
1992	34	33	34	47	33	29	23	27	28	38	30	40	396
1993	27	40	37	39	44	33	33	27	34	39	43	40	436
1994	36	31	44	35	27	33	29	37	17	27	32	30	378
1995	38	35	26	33	34	41	27	34	34	32	38	46	418
1996	40	47	35	38	28	29	30	35	49	24	33	30	418
1997	36	25	30	30	40	22	39	26	26	29	39	35	377
1998	29	29	32	36	31	22	40	19	37	36	49	30	390
1999	32	31	35	35	34	24	35	26	28	38	29	37	384
2000	32	26	46	32	39	32	33	29	36	29	44	29	407
2001	44	30	31	32	31	41	34	37	35	51	41	37	444
2002	32	31	45	31	45	32	27	25	31	30	31	37	397
2003	21	41	36	28	31	28	20	23	23	24	24	31	330
2004	32	22	30	30	46	28	27	26	22	28	25	27	343
2005	33	27	47	21	29	23	30	25	25	33	17	36	346
2006	24	37	23	23	27	23	25	22	43	20	31	39	337
2007	23	23	32	25	26	28	28	20	23	37	26	41	332
2008	28	20	37	25	25	20	27	27	18	25	26	25	303
2009	31	18	23	32	19	30	19	21	14	28	21	34	290
2010	26	25	23	19	31	26	26	18	17	36	12	28	287
Ave	51	48	58	56	55	54	53	52	51	51	51	57	637
Max	85	84	106	103	97	94	110	106	89	95	96	107	1,061
Min	21	18	23	19	19	20	19	18	14	20	12	20	287

Fatalities by Week (2005 to 2010)

Week Ending	2005	2006	2007	2008	2009	2010	Cumulative 2010	% Change 2010-2009	12 Month Moving Total
3-Jan	4	4	3	3	3	1	1	-67%	288
10-Jan	6	2	2	6	11	7	8	-43%	284
17-Jan	3	4	7	7	6	5	13	-35%	283
24-Jan	13	11	5	2	2	4	17	-23%	285
31-Jan	7	3	6	10	9	9	26	-16%	285
7-Feb	6	5	6	3	4	7	33	-6%	288
14-Feb	3	6	4	4	8	4	37	-14%	284
21-Feb	7	17	12	4	2	10	47	4%	292
28-Feb	11	9	1	9	4	4	51	4%	292
7-Mar	6	2	13	8	2	4	55	8%	294
14-Mar	5	6	5	8	7	7	62	7%	294
21-Mar	15	3	3	9	2	3	65	8%	295
28-Mar	14	10	9	9	8	8	73	7%	295
4-Apr	9	3	4	8	7	4	77	3%	292
11-Apr	3	4	10	4	6	5	82	1%	291
18-Apr	7	3	5	5	8	7	89	0%	290
25-Apr	5	6	4	8	11	2	91	-9%	281
2-May	7	9	6	6	4	3	94	-10%	280
9-May	6	11	4	4	7	4	98	-12%	277
16-May	12	3	7	7	3	8	106	-7%	282
23-May	5	6	5	5	1	8	114	-1%	289
30-May	3	7	7	6	4	10	124	4%	295
6-Jun	2	6	15	3	6	4	128	2%	293
13-Jun	8	4	2	5	7	6	134	2%	292
20-Jun	8	7	4	5	8	8	142	1%	292
27-Jun	3	5	7	6	6	6	148	1%	292
4-Jul	8	1	3	5	8	7	155	1%	291
11-Jul	6	8	10	10	7	3	158	-2%	287
18-Jul	6	7	6	2	2	3	161	-1%	288
25-Jul	7	6	5	4	7	7	168	-1%	288
1-Aug	7	4	5	9	3	9	177	2%	294
8-Aug	7	7	2	6	5	6	183	3%	295
15-Aug	6	5	2	6	7	5	188	2%	293
22-Aug	2	4	7	5	4	4	192	2%	293
29-Aug	7	5	9	6	1	1	193	2%	293
5-Sep	3	2	2	4	4	3	196	1%	292
12-Sep	4	8	7	5	2	4	200	2%	294
19-Sep	4	11	5	5	6	1	201	0%	289
26-Sep	13	18	8	5	2	6	207	1%	293
3-Oct	7	5	4	9	2	8	215	4%	299
10-Oct	6	9	12	5	6	11	226	7%	304
17-Oct	11	5	6	4	7	4	230	5%	301
24-Oct	4	4	11	5	7	9	239	6%	303
31-Oct	7	2	5	3	9	8	247	5%	302
7-Nov	6	9	5	4	4	2	249	4%	300
14-Nov	6	3	8	7	8	0	249	1%	292
21-Nov	2	10	4	10	5	4	253	0%	291
28-Nov	3	7	7	3	3	3	256	0%	291
5-Dec	7	16	6	4	6	7	263	1%	292
12-Dec	6	3	16	9	4	6	269	2%	294
19-Dec	5	7	5	4	11	5	274	-1%	288
26-Dec	13	11	10	9	10	10	284	-1%	288
31-Dec	5	4	6	1	4	3	287	-1%	287
Total	346	337	332	303	290	287			

Alcohol Related Deaths

NOTE: UPDATES TO THIS DATA WERE NOT AVAILABLE AT TIME OF REPORT

BAC Fatalities (12 months to April 2010)

- 24% of killed and tested drivers and riders had a BAC at 0.05 g/100ml or over (41 of 172) compared to 25% over the previous 12 month period (43 of 169).
- In Melbourne, 21 drivers/riders killed and tested were at or over 0.05, with 38% of these having a BAC in excess of 0.15 g/100ml. Across rural Victoria, 20 drivers/riders killed and tested were at or over 0.05, with 65% of these having a BAC over 0.15.
- Of the 41 drivers and riders killed and tested at or over 0.05, 15% (6) were aged under 21, 39% (16) were aged 21-29, 27% (11) were aged 30-39 and 20% (8) were aged 40 years and over. In the previous year (43 killed) the corresponding figures were 19% (8), 28% (12), 19% (8) and 35% (15), respectively.

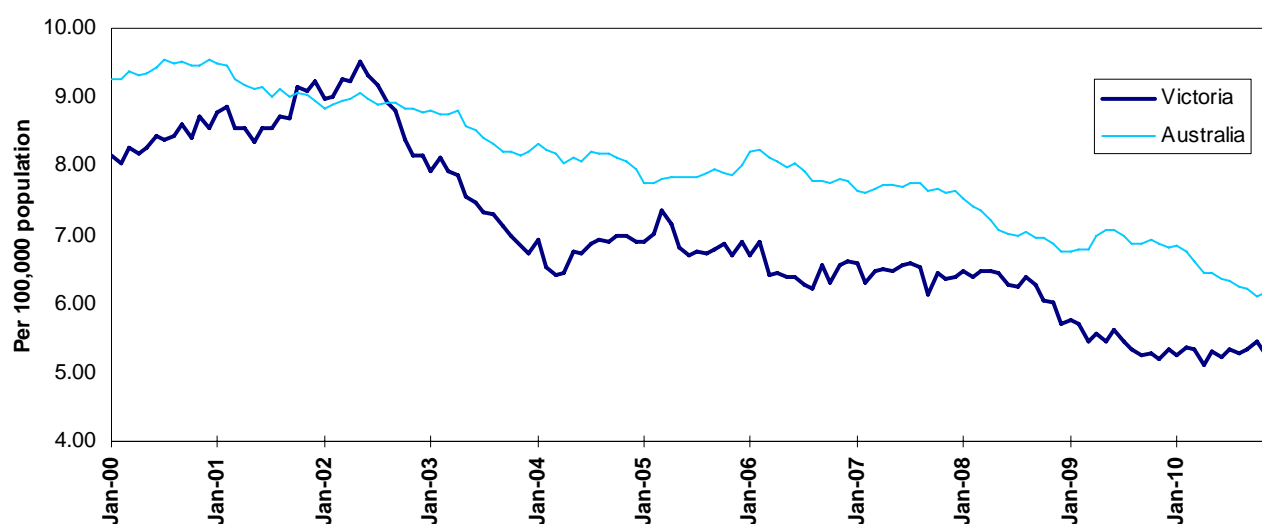
Category	2010	2009	2008	2010 v 2009	2010 v 2008	5 Year Av
Melbourne Drivers and Riders						
<0.05	55	63	63	-8	(-13%)	62
[a] at 0.05 & above	21	17	25	4	(24%)	21
% at 0.05 & above	(28%)	(21%)	(28%)			(25%)
[b] >0.15	8	10	12	-2	(-20%)	9
%>0.15	(11%)	(13%)	(14%)			(11%)
[b] as a % of [a]	(38%)	(59%)	(48%)			(43%)
BAC Unknown	5	3	1	2	(67%)	3
Country Drivers and Riders						
<0.05	76	63	90	13	(21%)	78
[a] at 0.05 & above	20	26	32	-6	(-23%)	26
% at 0.05 & above	(21%)	(29%)	(26%)			(25%)
[b] >0.15	13	17	20	-4	(-24%)	17
%>0.15	(14%)	(19%)	(16%)			(16%)
[b] as a % of [a]	(65%)	(65%)	(63%)			(64%)
BAC Unknown	7	2	1	5	(250%)	5
Victorian Total Drivers and Riders						
<0.05	131	126	153	5	(4%)	140
[a] at 0.05 & above	41	43	57	-2	(-5%)	47
% at 0.05 & above	(24%)	(25%)	(27%)			(25%)
[b] >0.15	21	27	32	-6	(-22%)	26
%>0.15	(12%)	(16%)	(15%)			(14%)
[b] as a % of [a]	(51%)	(63%)	(56%)			(54%)
BAC Unknown	12	5	2	7	(140%)	7
Victorian Total Pedestrians						
<0.05	32	35	38	-3	(-9%)	33
[a] at 0.05 & above	8	21	9	-13	(-62%)	14
% at 0.05 & above	(20%)	(38%)	(19%)			(30%)
[b] >0.15	3	10	8	-7	(-70%)	9
%>0.15	(8%)	(18%)	(17%)			(19%)
[b] as a % of [a]	(38%)	(48%)	(89%)			(62%)
BAC Unknown	6	4	2	2	(50%)	4

The National Picture

State	Killed (12 months to December)					2010 v 2009	
	2010	2009	2008	2007			
NSW	422	453	374	435	-31	(-7%)	
VIC	287	290	303	332	-3	(-1%)	
QLD	249	331	328	360	-82	(-25%)	
SA	118	119	99	125	-1	(-1%)	
WA	193	190	209	235	3	(2%)	
TAS	31	64	40	45	-33	(-52%)	
NT	50	31	75	57	19	(61%)	
ACT	18	12	14	14	6	(50%)	
AUST TOTAL	1,368	1,490	1,442	1,603	-122	(-8%)	
AUST minus VIC	1,081	1,200	1,139	1,271	-119	(-10%)	

State	Deaths per 10,000 registered vehicles (12 months to December)			Deaths per 100,000 population (12 months to December)		
	2010	2009	2008	2010	2009	2008
NSW	0.91	0.99	0.83	5.83	6.38	5.37
VIC	0.70	0.72	0.77	5.17	5.34	5.72
QLD	0.73	1.00	1.02	5.51	7.51	7.66
SA	0.95	0.98	0.83	7.17	7.33	6.18
WA	1.00	1.03	1.18	8.40	8.49	9.66
TAS	0.75	1.59	1.02	6.11	12.73	8.03
NT	3.68	2.38	6.03	21.77	13.79	34.10
ACT	0.71	0.48	0.58	5.02	3.42	4.07
AUST TOTAL	0.85	0.94	0.94	6.12	6.81	6.75
AUST minus VIC	0.90	1.02	0.99	6.44	7.30	7.08

Victoria v Australia – 12 Month Moving Fatality Rate



Booze-Bus Random Breath Testing

12 months to December 2010 (monthly totals)

2010		Jan	Feb	Mar	Apr	May	Jun	Jul	Aug	Sep	Oct	Nov	Dec
Melbourne		99,374	88,214	88,492	100,588	89,275	85,838	86,195	79,603	91,365	78,241	81,341	97,729
Country		23,837	17,657	13,776	20,869	13,669	13,900	13,420	9,459	14,650	15,957	19,375	19,112
Vic Total		123,211	105,871	102,268	121,457	102,944	99,738	99,615	89,062	106,015	94,198	100,716	116,841

12 months to December vs previous 12 months

	2010	2009	2008	2010 v 2009	2010 v 2008
Melbourne	1,066,255	1,020,595	1,179,356	45,660 (4%)	-113,101 (-10%)
Country	195,681	217,242	239,829	-21,561 (-10%)	-44,148 (-18%)
Vic Total	1,261,936	1,237,837	1,419,185	24,099 (2%)	-157,249 (-11%)

Mobile Safety Camera Data

Speed Infringements Issued from Mobile Cameras (monthly totals)

Monthly Average = 50,411

2010

Jan	Feb	Mar	Apr	May	Jun	Jul	Aug	Sep	Oct	Nov	Dec
51,439	54,548	54,283	53,468	48,585	50,841	52,675	47,719	49,546	49,408	47,500	44,921

Excessive Speed Infringements Issued from Mobile Cameras (monthly totals)

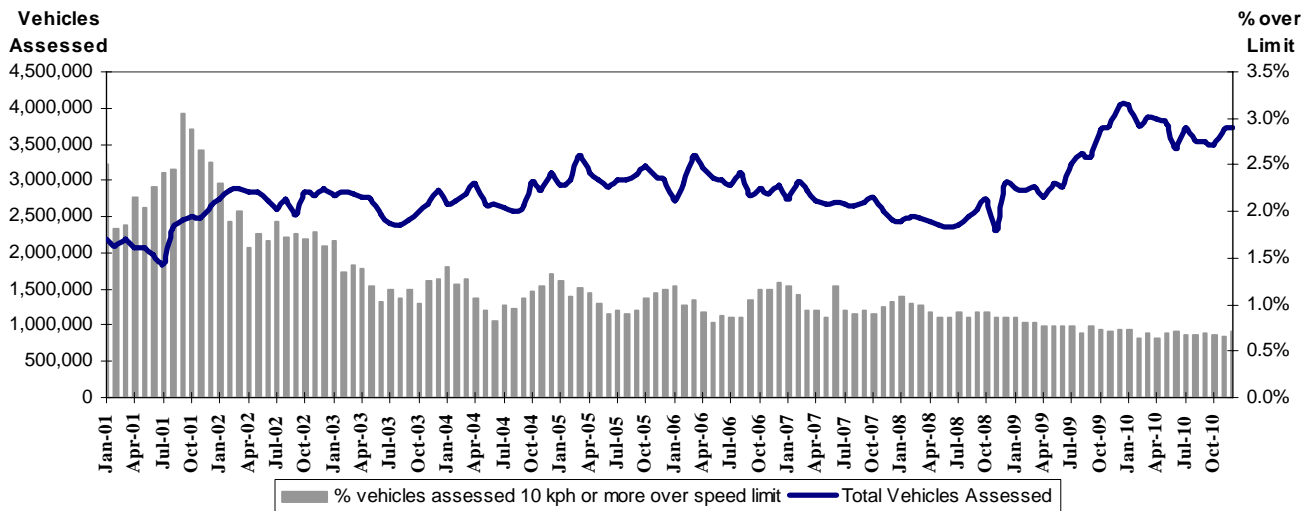
Monthly Average = 369

2010

Jan	Feb	Mar	Apr	May	Jun	Jul	Aug	Sep	Oct	Nov	Dec
382	394	360	395	372	372	422	311	354	377	330	363

Note: An ESI is defined as 25km/h over the speed limit except in a 110km/h zone where it is 20km/h over the limit.

Mobile Safety Cameras – Vehicles assessed and percentage of vehicles assessed 10km/h or more over speed limit per month



Explanations and References

Hi-Alcime is those times of the day and week (*shaded* in the table below) when casualty crashes are **ten times more likely to involve alcohol** than casualty crashes at other (**Lo-Alcime**) times.

	12am - 6am	6am - 8am	8am - 10am	10am - 2pm	2pm - 4pm	4pm - 6pm	6pm - 12pm
Monday							
Tuesday							
Wednesday							
Thursday							
Friday							
Saturday							
Sunday							

Police Service Areas align with Local Government Areas. Most Police Service Areas are equivalent to a single Local Government Area, while the remainder comprise two or three Local Government Areas.

Police Service Area	Local Government Area(s)	Police Service Area	Local Government Area(s)
BALLARAT	BALLARAT	MARIBYRNONG	MARIBYRNONG
BANYULE	BANYULE	MAROONDAH	MAROONDAH
BASS COAST	BASS COAST, SOUTH GIPPSLAND	MELBOURNE	MELBOURNE
BAW BAW	BAWBAW	MELTON	MELTON
BAYSIDE	BAYSIDE	MILDURA	MILDURA
BENALLA	BENALLA, MANSFIELD, STRATHBOGIE	MITCHELL	MITCHELL, MURRINDINDI
BENDIGO	GREATER BENDIGO, LODDON	MONASH	MONASH
BOROONDARA	BOROONDARA	MOONEE VALLEY	MOONEE VALLEY
BRIMBANK	BRIMBANK	MOORABOOL	GOLDEN PLAINS, HEPBURN, MOORABOOL
CAMPASPE	CAMPASPE	MORELAND	MORELAND
CARDINIA	CARDINIA	MORNINGTON PENINSULA	MORNINGTON PENINSULA
CASEY	CASEY	NILLUMBIK	NILLUMBIK
CENTRAL GOLDFIELDS	CENTRAL GOLDFIELDS, PYRENEES	NORTHERN GRAMPIANS	ARARAT, NORTHERN GRAMPIANS, YARRIAMBICK
CORANGAMITE	COLAC-OTWAY, CORANGAMITE	PORT PHILLIP	PORT PHILLIP
DANDENONG	GREATER DANDENONG	SHEPPARTON	GREATER SHEPPARTON
DAREBIN	DAREBIN	SOUTHERN GRAMPIANS	GLENELG, SOUTHERN GRAMPIANS
EAST GIPPSLAND	EAST GIPPSLAND	STONNINGTON	STONNINGTON
FRANKSTON	FRANKSTON	SURFCOAST	SURFCOAST
GEE LONG	GREATER GEE LONG, QUEENSLIFF	SWANHILL	BULOKE
GLENEIRA	GLENEIRA	WANGARATTA	ALPINE, WANGARATTA
HOBSONS BAY	HOBSONSBAY	WARRNAMBOOL	MOYNE, WARRNAMBOOL
HORSHAM	HINDMARSH, HORSHAM, WESTWIMMERA	WELLINGTON	WELLINGTON
HUME	HUME	WHITEHORSE	WHITEHORSE
KINGSTON	KINGSTON	WHITTLESEA	WHITTLESEA
KNOX	KNOX	WODONGA	INDIGO, TOWONG, WODONGA
LATROBE	LATROBE	WYNDHAM	WYNDHAM
MACEDON RANGES	MOUNT ALEXANDER, MACEDON RANGES	YARRA	YARRA
MANNINGHAM	MANNINGHAM	YARRA RANGES	YARRA RANGES

Useful Internet Sites

TAC Sites

- TAC Safety (Road Safety) www.tacsafety.com.au
- TAC How safe is your car www.howsafeisyourcar.com.au
- TAC Learners Log www.learnerslog.com.au
- TAC Motorcycle Safety Website www.spokes.com.au
- TAC Corporate site www.tac.vic.gov.au

Victorian Sites:

- arrive alive www.vicroads.vic.gov.au
- VicRoads www.vicroads.vic.gov.au
- Victorian Police www.police.vic.gov.au
- Parliamentary Road Safety Committee www.parliament.vic.gov.au/rsc/
- ARRB Transport Research www.arrb.com.au
- RACV www.racv.com.au
- Monash University Accident Research Centre www.monash.edu.au/muarc
- Roadsafe www.roadsafe.org.au

National and Interstate Sites:

- Australian Transport Safety Bureau www.atsb.gov.au
- Roads and Traffic Authority (NSW) www.rta.nsw.gov.au
- Queensland Transport - Road Safety transport.qld.gov.au/Home/Safety/Road
- Department of Transport (SA) www.transport.sa.gov.au/index.htm
- Main Roads Western Australia - Road Safety www.mrwa.wa.gov.au

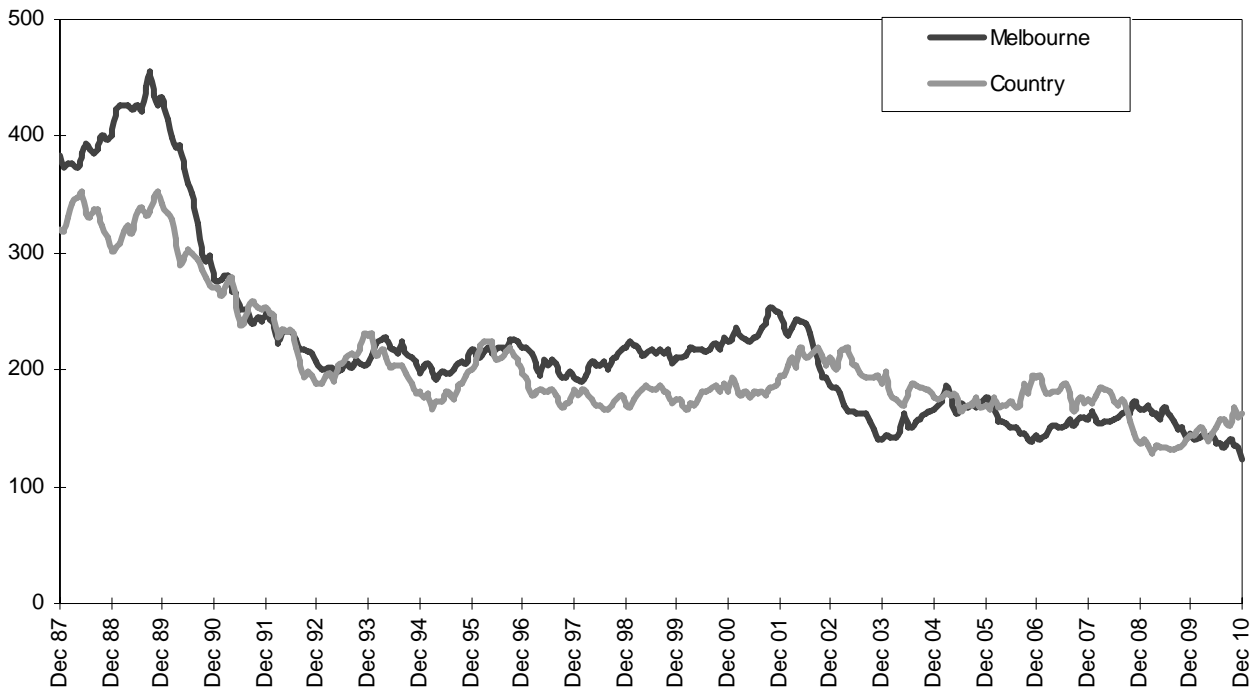
International Sites:

- National Highway Traffic Safety Admin (USA) www.nhtsa.dot.gov
- Swedish Road and Transport Institute (VTI) www.vti.se
- SWOV Institute for Road Safety Research www.swov.nl

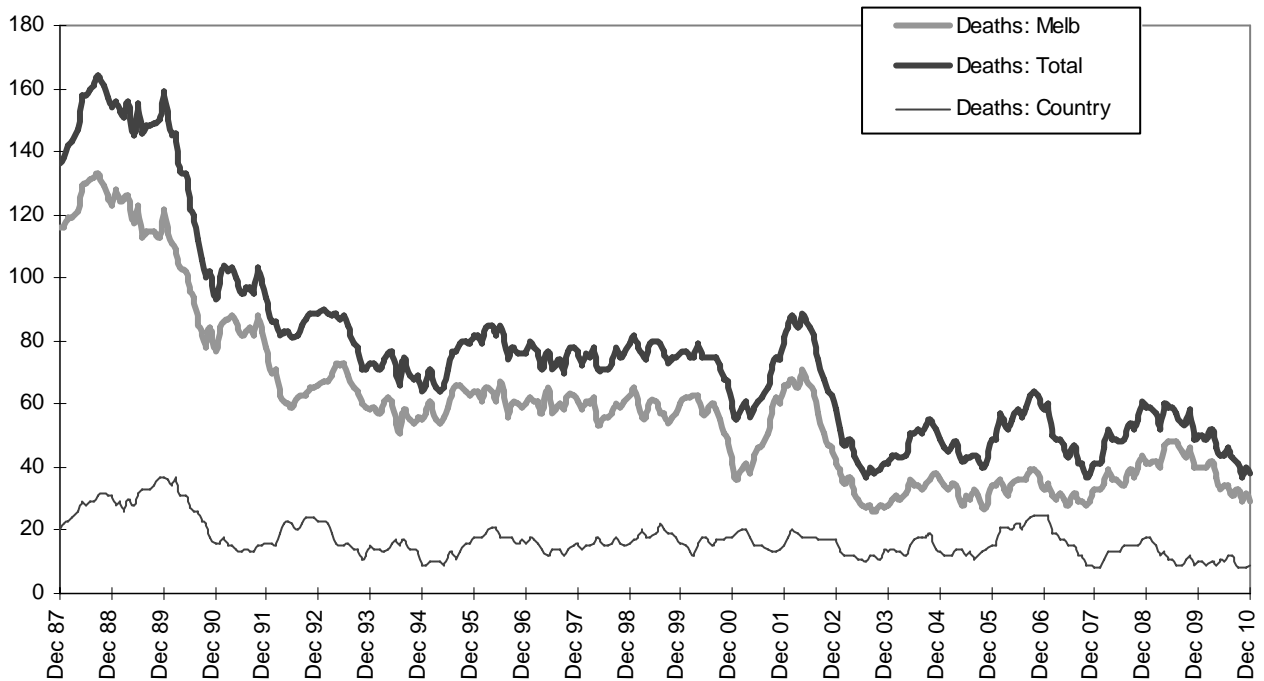
Related Sites:

- Australian Drug Foundation www.adf.org.au
- Bicycle Victoria www.bv.com.au

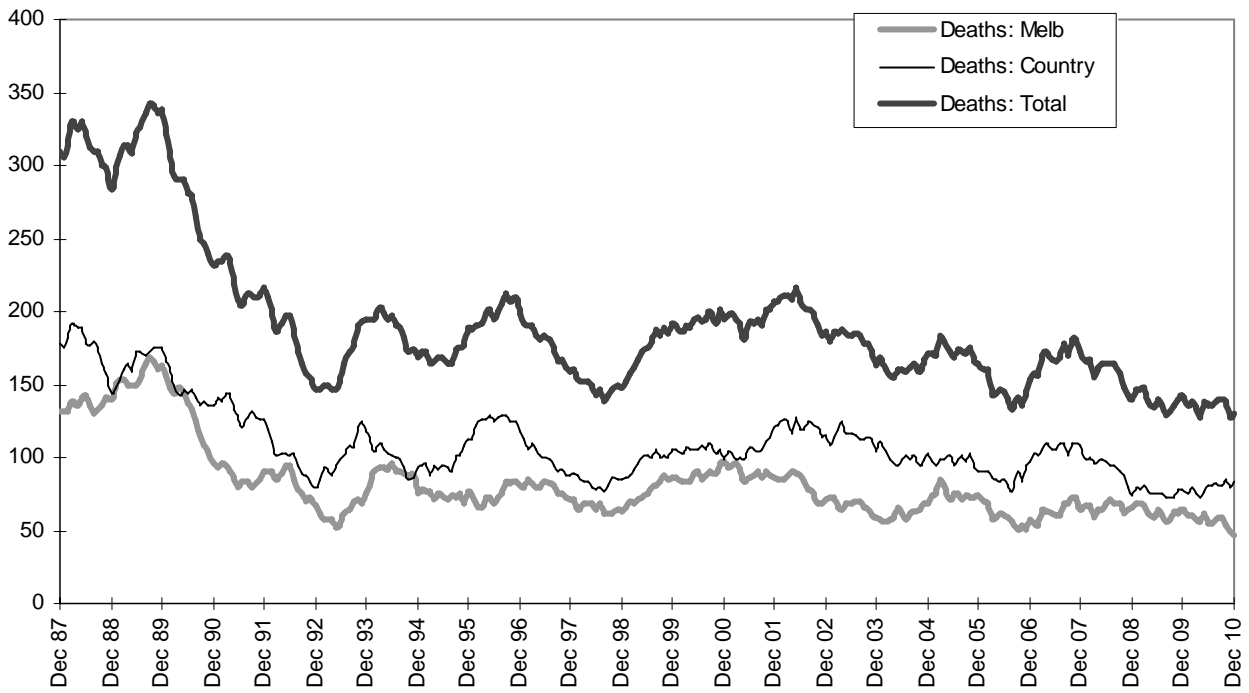
Graph 1 – Melbourne/country fatalities



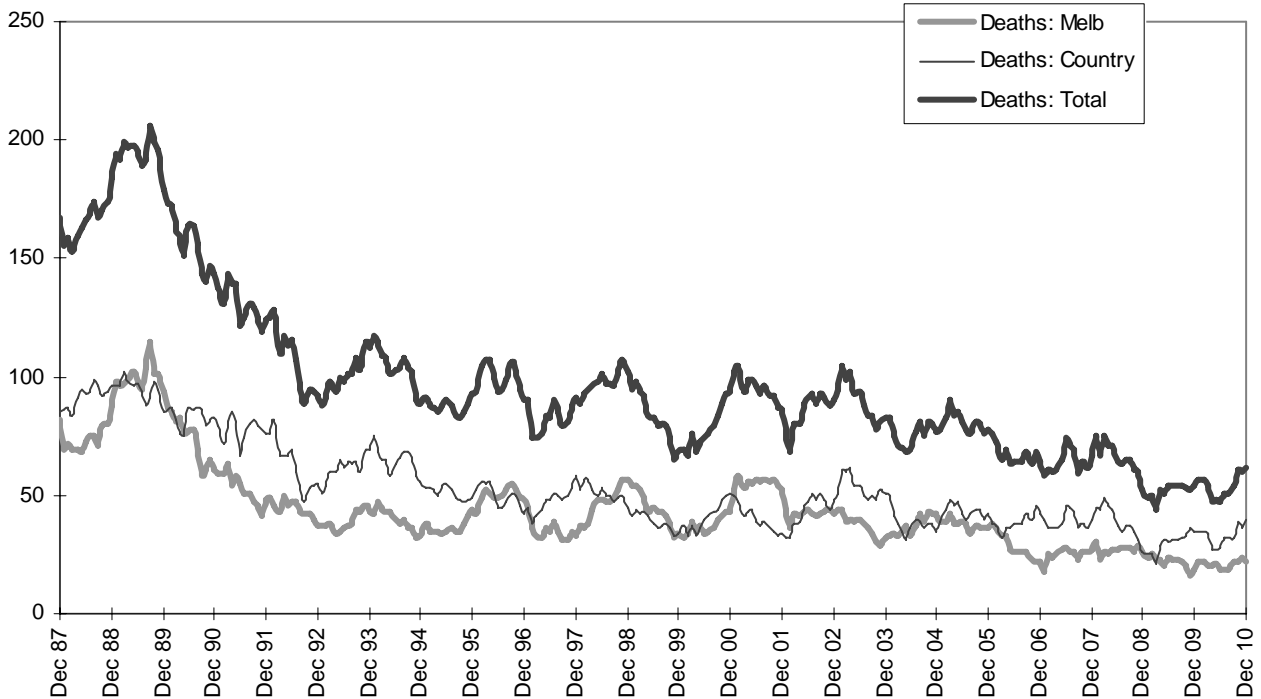
Graph 2a – Pedestrian fatalities (Melbourne/country)



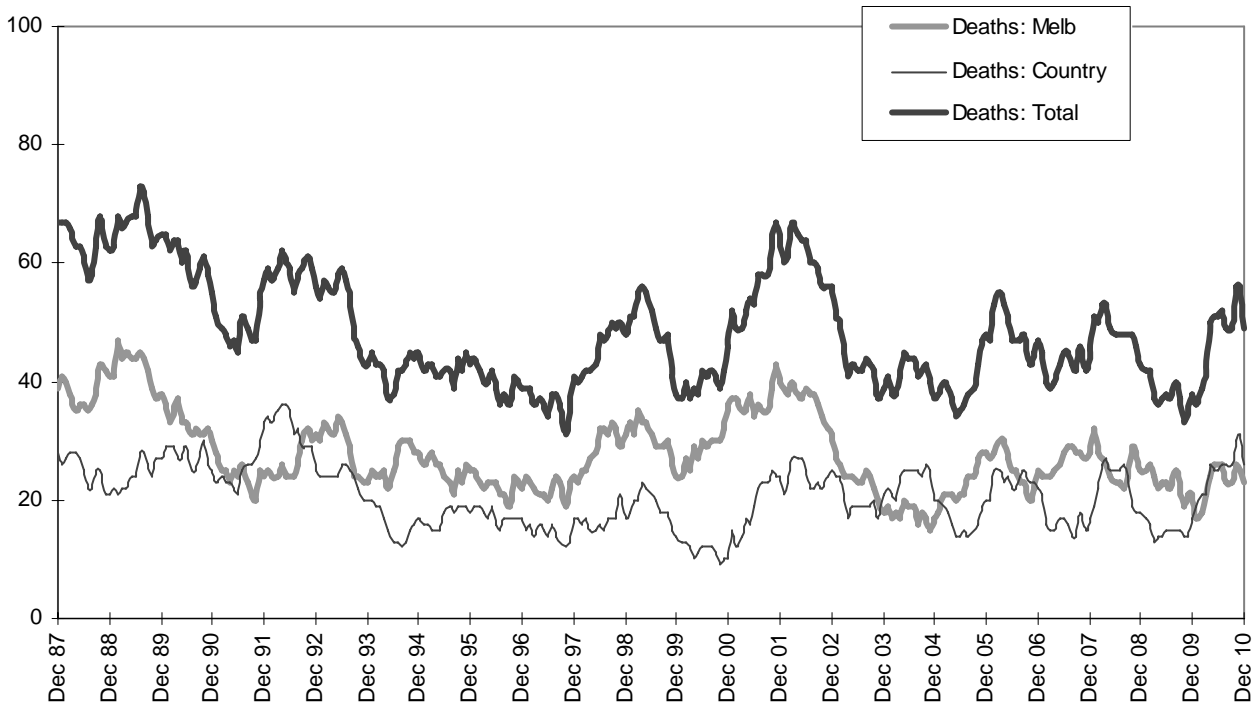
Graph 2b – Driver fatalities (Melbourne/country)



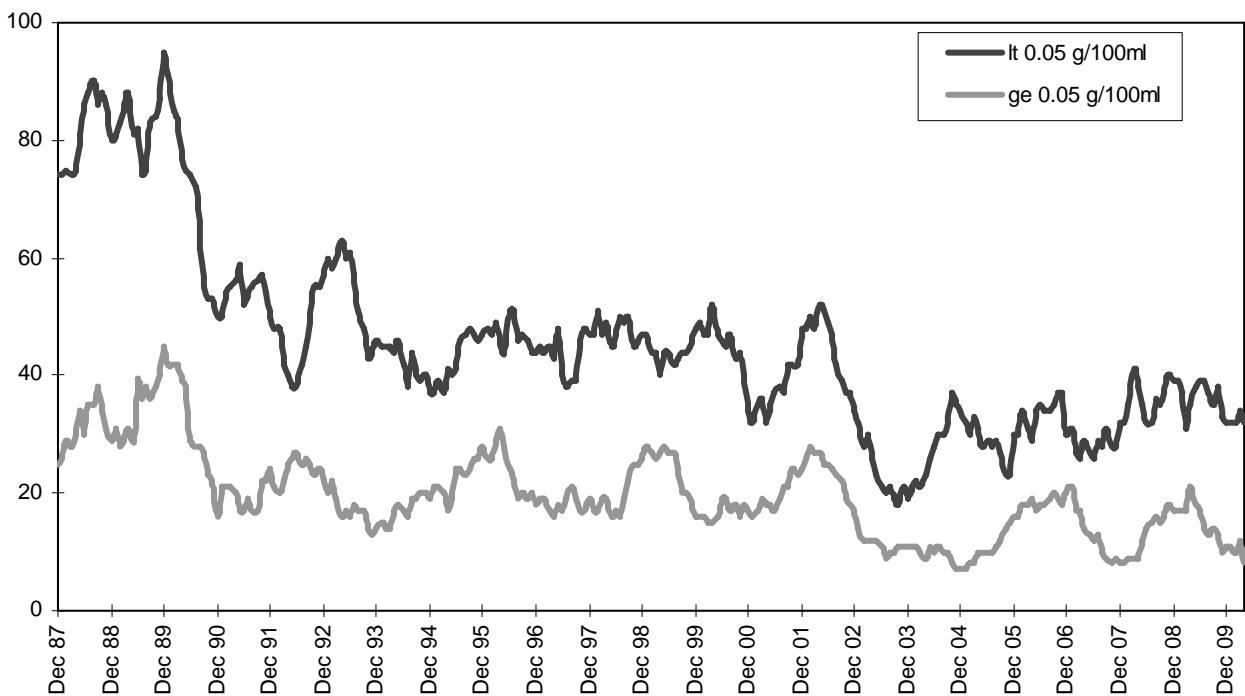
Graph 2c – Passenger fatalities (Melbourne/country)



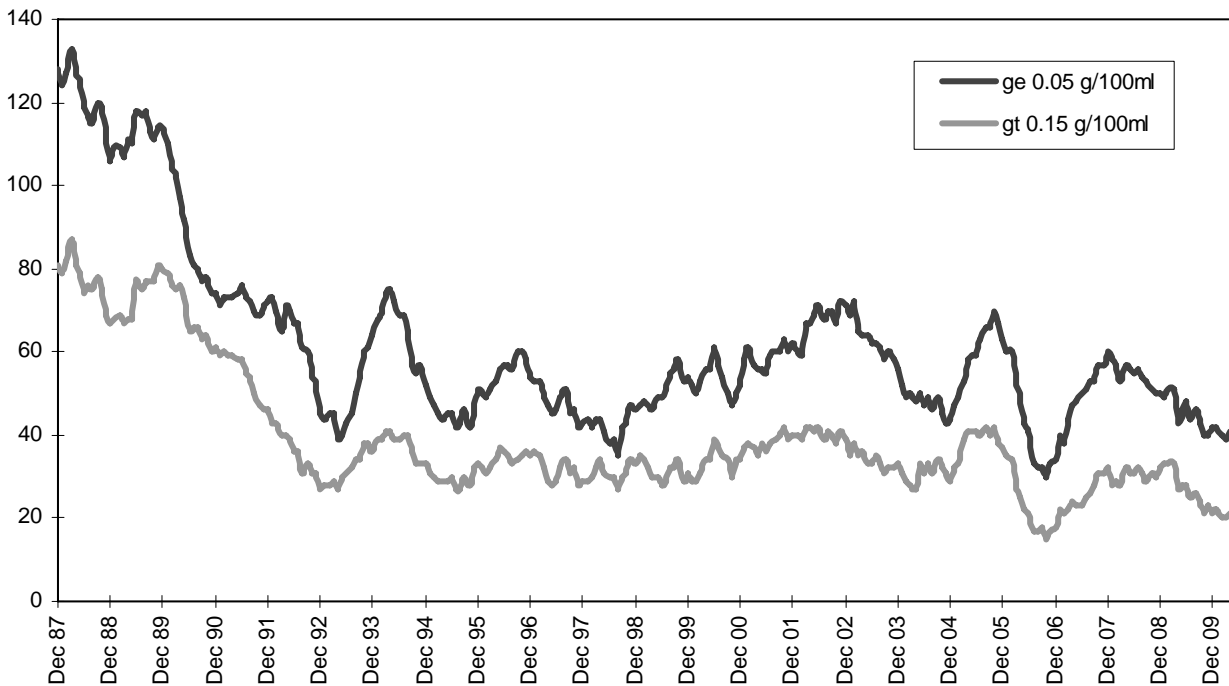
Graph 2d –Motorcyclist fatalities (Melbourne/country)



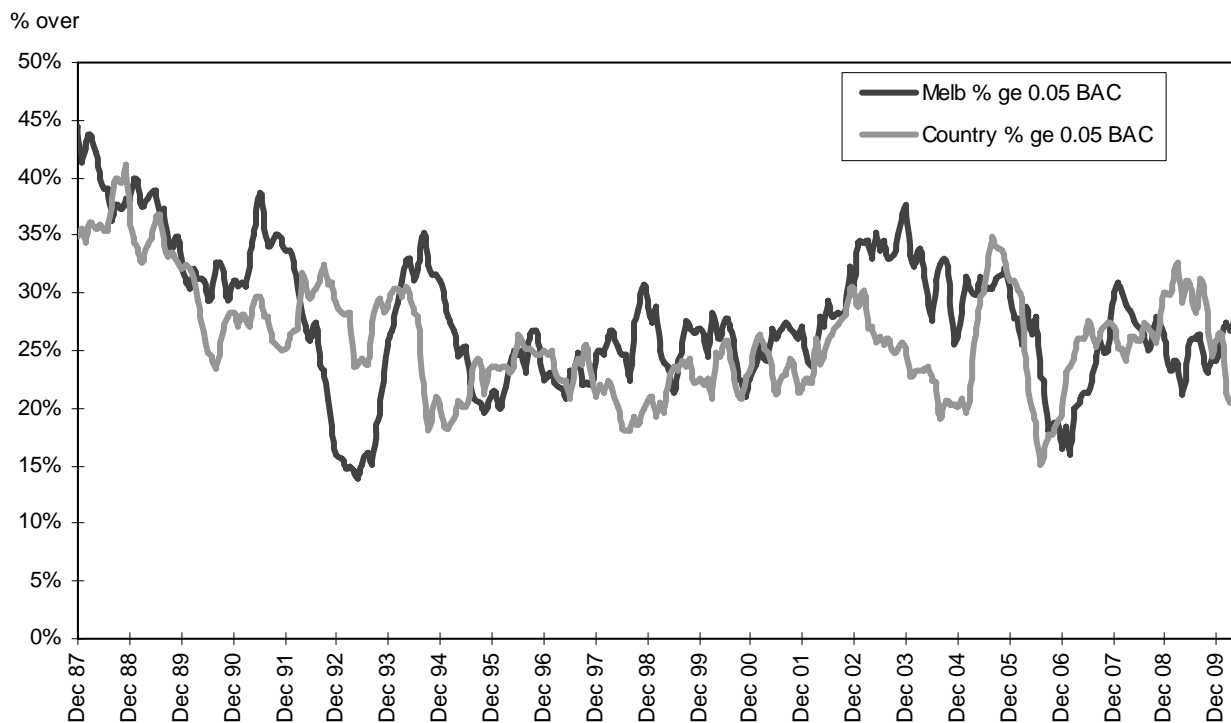
Graph 3a – Pedestrian deaths by BAC



Graph 3b – Driver/rider deaths by BAC



Graph 3c – Proportion of driver/rider deaths with a BAC ge 0.05



Graph 4a – Booze-Bus RBTs



Graph 4b – RBT: Percentage positive readings

