

TAC Value-based Healthcare Grant Program 2022 Guidelines



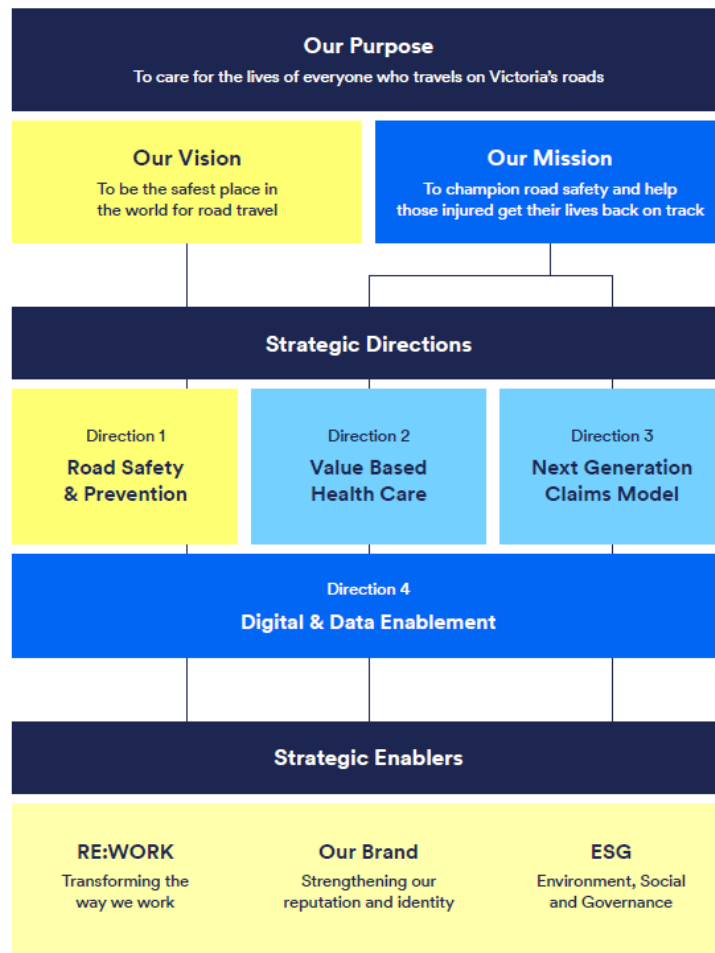
Contents

TAC’s Strategic Direction ‘TAC 2025’	2
TAC Value-based Healthcare Grant Program	3
WHAT IS THIS PROGRAM?	3
AIMS OF THE PROGRAM	4
WHAT FUNDING IS AVAILABLE?	4
WHEN DOES THE GRANT ROUND OPEN?	4
Eligibility	4
WHO CAN APPLY?	4
WHO IS NOT ELIGIBLE TO APPLY?	5
WHAT PROJECTS WILL BE FUNDED?	5
EXAMPLES OF PROJECTS	6
Using the funds	6
APPROVED EXPENSES	6
PROHIBITED EXPENSES	7
How to apply for funding	7
PRE-APPLICATION SUPPORT	7
APPLICATION FORM	7
Assessment	7
ASSESSMENT PROCESS	7
ASSESSMENT CRITERIA	8
NOTIFICATION AND FEEDBACK	8
Successful Applicants	8
FUNDING AGREEMENT AND PROJECT PLAN	8
PROJECT DELIVERY	9
REPORTING	9
PAYMENTS	9

TAC's Strategic Direction 'TAC 2025'

The TAC is a Government-owned enterprise, established under the *Transport Accident Act 1986* to reduce the social and financial cost of transport accident injuries to the Victorian community. The TAC's key functions are to prevent accidents and support those who have been injured on our roads. The TAC's commitment to having a positive impact on the lives of our clients and their providers, and every Victorian road user is exemplified by our purpose, vision and mission.

Value-based Health Care (VBHC) is one of four strategic directions under TAC 2025. VBHC is an opportunity to focus on a client's individual needs by improving the outcomes that matter to them. It's also an opportunity to focus on recovery, rehabilitation, return to work and social participation in a more efficient and cost-effective way. At the TAC, supporting clients to achieve the best health outcomes possible is at the core of everything we do. We acknowledge that what constitutes getting 'life back on track' is unique for each client.

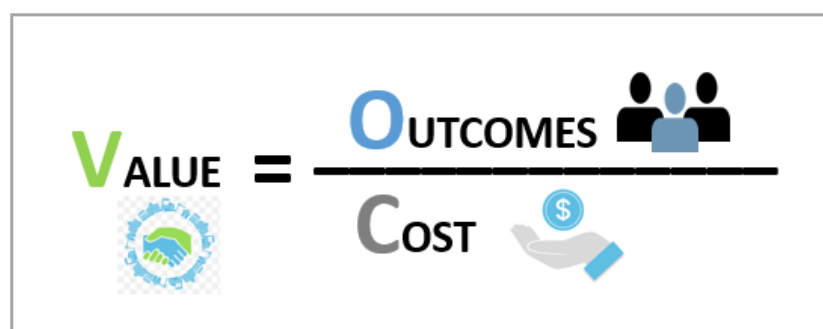


TAC Value-based Healthcare Grant Program

WHAT IS THIS PROGRAM?

The TAC funds healthcare services that facilitate rehabilitation and recovery after a transport accident to help clients' get their life back on track. Consistent with the TAC's strategic direction 'TAC 2025', the TAC is offering research grants funding to encourage health service providers to make shifts towards VBHC.

VBHC is healthcare that supports people to achieve outcomes that matter most to them, in a way that is financially sustainable for the system¹. In a VBHC system people receive integrated care, providers have the data they need to continuously improve care, and organisations have incentives that are aligned with what value means to people². On a community level VBHC can improve population health outcomes and reduce overall health care spending.



3

Supported by technology and data analytics capability, there are four essential principles of VBHC known as the quadruple aim⁴:

1. **Clinical / Client Outcomes.** Needs driven, effective, integrated care that delivers positive, sustainable and measurable results.
2. **Client Experience.** High levels of satisfaction and support to navigate their own care.
3. **Provider Experience.** An engaged workforce of providers with high job satisfaction.
4. **Cost Optimisation.** Transparent, effective and efficient process improvements that eliminate waste, redundancy and misuse of resources.

Achieving VBHC is complex and requires change on individual, service and systemic levels. The TAC can help by facilitating investment in research that will build the body of evidence for VBHC in Victoria.

To inform your application the TAC strongly encourages visiting these websites for more information on VBHC:

- Australian Centre for Value Based Healthcare <https://valuebasedcareaustralia.com.au>
- Safer Care Victoria <https://www.bettersafecare.vic.gov.au/publications/value-based-healthcare>

¹ Victorian Agency for Health Information, Value-based Healthcare Advice, dated 4 December 2019.

² Safer Care Victoria. Local and international perspectives on value based health care, dated 4 June 2019.

³ Porter, M.E. et al. (2014). Value-Based Health Care Delivery, Harvard Business School.

⁴ Sikka, R., Morath J.M., & Leape, L. (2015). The Quadruple Aim: care, health, cost and meaning in work.

AIMS OF THE PROGRAM

The grant program aims to incentivise health service providers to implement innovative research projects that embrace the principles of VBHC. We are looking for projects that address an area of priority for people with transport accident injuries and will build capability in measuring outcomes.

WHAT FUNDING IS AVAILABLE?

This grant program offers grants of up to \$150,000 (ex. GST).

WHEN DOES THE GRANT ROUND OPEN?

Applications Open	Applications Close	Assessment	Notification	Execute Funding Agreement	Project Delivery Timeframe
Tuesday 19 th April 2022 9:00AM	Tuesday 31 st May 2022 3:00PM	June-July	August	September	Within 15 months (Delivered by 30 December 2023)

Eligibility

WHO CAN APPLY?

To be eligible for funding you must be Victorian based, financially viable and one of the following health service related providers:

1. Hospitals – includes pre-hospital clinics
2. Rehabilitation services – includes inpatient and outpatient services
3. Post-hospital services – includes early discharge and post-acute care type services
4. Primary health care services – includes Primary Health Networks
5. Pain management service providers
6. Peak Bodies*
7. Professional Societies*
8. Doctor of Philosophy Students*

*Must be collaborating with a health setting from 1 – 5.

Applicants must nominate a Chief Investigator who will be responsible for submitting the application, conducting the research, and reporting as required under the Funding Agreement.

The TAC will accept multiple applications from a single organisation, however each application must nominate a different Chief Investigator to lead the project.

WHO IS NOT ELIGIBLE TO APPLY?

Ineligible professionals, services and programs	Reason(s)
<ul style="list-style-type: none">Individuals who are not a health service related providerAcademic researchers who do not have dual appointment with a health setting listed above	This grant program targets healthcare.
<ul style="list-style-type: none">Vocational rehabilitation providersNetwork pain management providers	The TAC has existing projects incorporating the principles of VBHC.
<ul style="list-style-type: none">Disability services	The TAC will administer a grant program dedicated to disability services later in 2022.
<ul style="list-style-type: none">Service providers who are members of the TAC Clinical Panel	To avoid any perception of bias or conflict of interest.

Applications may also be considered ineligible if the following requirements are breached:

- It is incomplete or fails to answer all questions
- Duplicates previous research or current research in-progress
- A person is nominated as Chief Investigator on more than one application
- Not submitted by the designated closing date and time

WHAT PROJECTS WILL BE FUNDED?

Funding will be prioritised for new, small-scale projects in the discovery or pilot stage. You are invited to submit an application for projects that:

- Align with helping TAC clients get their life back on track
- Address at least two of the principles of VBHC
- Demonstrate innovation in health care; the project creates a new or significantly changes an existing method, process or service⁵.
- Focus on an episode of care or topic of importance to TAC clients with traumatic physical and/or mental health injuries
- Consider social determinants of health such as the needs of culturally and linguistically diverse populations, or people living in rural or remote areas
- Can be measured and evaluated; preferably in comparison to usual care and incorporate global health measures
- Offer potential to be scaled-up in the future – continued or expanded

Applications to fund the project *in part* and *in full* will be accepted.

Successful applicants must comply with relevant legislation⁶ and professional standards⁷ to ensure the research is ethical, conducted with integrity and scientifically sound.

⁵ Taylor, S.P. (2017) What Is Innovation? A Study of the Definitions, Academic Models and Applicability of Innovation to an Example of Social Housing in England. *Open Journal of Social Sciences*, 5, 128-146.

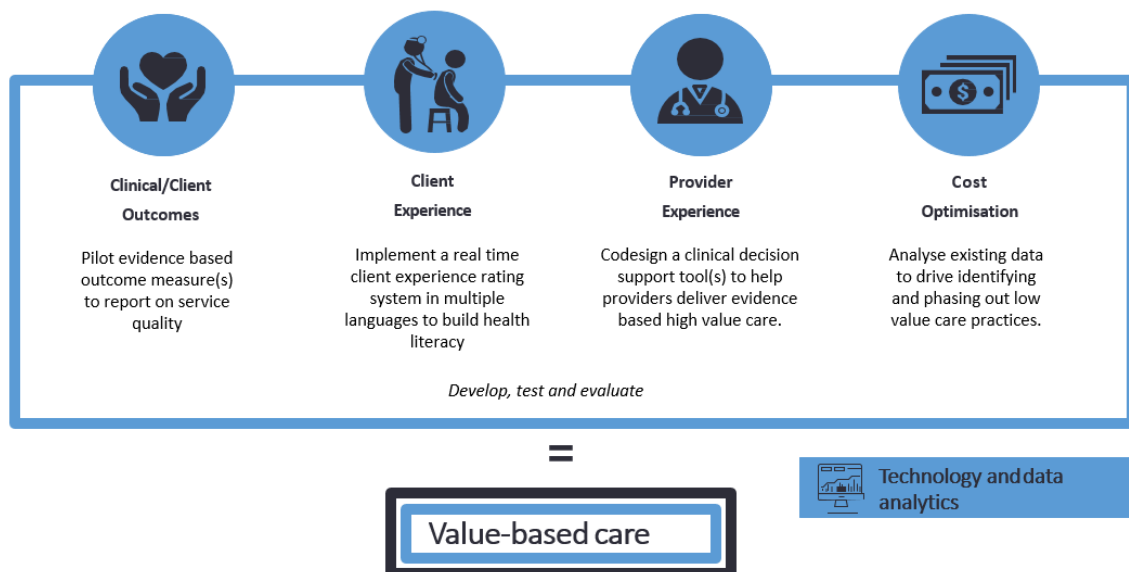
⁶ The Privacy Act (1988) and National Statement on Ethical Conduct in Human Research (2018).

⁷ Australian Code for the Responsible Conduct of Research (2018).

Projects that won't be funded include:

- Interstate projects
- Projects that have already taken place
- Secondary research of any kind
- One-off events such as workshops, expos and conferences
- Professional development of staff, including training
- General fundraising projects

EXAMPLES OF PROJECTS



Using the funds

APPROVED EXPENSES

Funding can be used for the following project expenses:

- Key personnel - Salary contributions for supporting project management roles, consultants (e.g. researchers), experts (e.g. statistician) and consumers. Must match the roles and responsibilities of the position and reflect the time commitment.
- Equipment - Essential to the research. For example, language translation, transcribing, access to specialist archives / databases, specialized information technology software and/or devices (e.g. live scribe pens), and outcome measurement tools. Individual items of equipment must not exceed \$10,000.
- Travel - Essential to the research. For example, vehicle mileage and accommodation for data collection.
- Other direct research costs – Ethics approval costs, printing and mail-out costs for recruitment, venue hire and hospitality costs for workshops associated with data collection.

Applicants are required to justify the budget.

PROHIBITED EXPENSES

Expenses that won't be funded within this program include:

- Infrastructure and capital works
- Professional membership fees
- Professional development courses
- Conference registration fees
- Publication fees for journals
- Cleaning services
- Anything not directly related to the project

How to apply for funding

PRE-APPLICATION SUPPORT

To assist you in preparing your application the TAC is providing 30 minutes of pre application support per applicant in the months of April and May. An education session on evaluation methodology will also be made available. It is recommended you take advantage of this support by contacting the Research & Evaluation team by email research@tac.vic.gov.au

APPLICATION FORM

The application form can be downloaded in PDF or Word format from the TAC website at tac.vic.gov.au/about-the-tac/community/grants/vbhc. All sections must be completed. All funding amounts referenced in the application form are to be in Australian dollars and exclusive of GST.

Applications are to be submitted and managed online through SmartyGrants, a grants management platform. Please contact the Research & Evaluation team by email research@tac.vic.gov.au should you need technical support.

After your application is submitted you will be given a link to your project.

Assessment

ASSESSMENT PROCESS

The TAC adopts an open, transparent and objective assessment process which consists of the following stages:

1. Eligibility - each application is assessed against the eligibility criteria. Applications must adhere to eligibility standards outlined in 'Who can apply?' on page 4. Ineligible applications will not progress past this stage.
2. Assessment – each eligible application is individually reviewed and assessed against the defined assessment criteria. This assessment is undertaken by a panel of subject matter experts from the TAC.
3. Recommendation – all assessments are compiled into a recommendation report and the final decision is made by the TAC.

During the assessment process the TAC may negotiate grant amounts. The outcome of these negotiations will impact the success of the application.

ASSESSMENT CRITERIA

All eligible applications will be assessed against the following criteria:

Criteria	Description
1. Impact on VBHC 40% weighting	The application outlines: A need and innovative solution substantiated by relevant evidence that is directly relevant to the aims of this grant program. The potential contribution of the project on VBHC. Engagement of relevant partners that will facilitate change in practice.
2. Capability and capacity 25% weighting	The application demonstrates: Nominated key personnel have the breadth of skills and expertise, and access to resources to successfully deliver the project.
3. Project methodology 25% weighting	The application outlines: A sound and appropriate design and method to address the need, aim and objectives (e.g. best-fit). Considers participant recruitment, data management, ethics and privacy. Appropriate milestones, deliverables and feasible timelines. Involvement of TAC clients or consumers in the management of the project.
4. Value for money and risk 10% weighting	The application outlines: A realistic project budget with well justified project expenses. Co-contributions and in-kind support. A sound risk management plan.

NOTIFICATION AND FEEDBACK

All applicants will be informed of the outcome of their application and provided feedback via email no later than ten weeks after the closing date. Refer to the table on page 4 to view key dates.

Successful Applicants

FUNDING AGREEMENT AND PROJECT PLAN

All successful Applicants will need to sign a Funding Agreement. This document will detail the TAC's funding Standard Terms and Conditions with respect to:

- Roles and responsibilities
- Funding contribution
- Governance
- Confidentiality, Privacy and publicity
- Intellectual property
- Sharing of de-identified data
- Warranties and indemnity
- Insurance requirements
- Dispute resolution
- Termination

All successful Applicants will need to develop a Project Plan. The Project Plan will detail the aims, objectives, methodology, deliverables and payment schedule (excluding GST). The TAC will transpose information from the Application into the Project Plan template to make the complicated simple. Successful Applicants will be required to complete any unpopulated sections of the Project

Plan template and facilitate execution. The Project Plan will be an enclosure of the Funding Agreement.

PROJECT DELIVERY

All project activities must be completed within 15 months of the Funding Agreement commencement date unless otherwise agreed to by the TAC.

REPORTING

Reporting is required to monitor project progress and ensure projects are delivered as agreed. All reporting requirements will be integrated into the Project Plan. We acknowledge not all projects are the same, however as a minimum applicants are expected to provide the following:

- Progress meetings - quarterly basis
- Progress Reports – every 6mths
- Outcome Report – conclusion of project activities and includes a financial acquittal for all expended funds (excluding GST)
- Presentation of findings – conclusion of project activities

TAC project management reporting templates will be made available to assist with consistent reporting.

PAYMENTS

The payment schedule for each successful project will be outlined in their Project Plan. Payments are triggered by the execution of the Funding Agreement and the receipt and acceptance of project reports. The standard payment schedule includes:

- Project Initiation – execution of the Funding Agreement (50%)
- Progress Report #1 – 6 months from commencement (15%)
- Progress Report #2 – 12 months from commencement (15%)
- Outcome Report – within 15 months of commencement (20%)

Contact us

For further information, or to discuss a project idea and application email the Research & Evaluation team research@tac.vic.gov.au