



ROAD SAFETY STATISTICAL SUMMARY

April 2012



**TRANSPORT
ACCIDENT
COMMISSION**

60 Brougham Street
Geelong Vic 3220
PO Box 742
Geelong Vic 3220
Ausdoc DX 216079 Geelong

Telephone 1300 654 329
STD Toll Free 1800 332 556
Fax: 03 9656 9300
www.tac.vic.gov.au
ABN 22 033 947 623



Contents

Status Reports _____	4-5
Fatalities (updated snapshot)	
Claims involving an acute hospital admission (updated snapshot)	
Tables _____	6-9
Fatalities (rolling 12 month)	
Claims involving an acute hospital admission (rolling 12 month)	
Overview	
Sex	
Road user	
Location	
Age Group	
Alctime	
Accident Type	
Police Service Area	
Fatalities – monthly totals since 1951 _____	10
Fatalities by Week (2007 to 2012) _____	11
Alcohol Related Fatalities _____	12
The National Picture _____	13
Police Enforcement _____	14
Explanations and References _____	15-16
Alcohol times (“Alctime”) explained	
Police Service Areas	
Useful internet sites	
Graphs (12 month moving totals) _____	17-24

Note about the data in this report

- All data provided in this report is the data most recently available at time of production. Typically, fatalities data is updated to the end of report month. Similarly, breath test data and safety camera data is updated to the end of the report month. A 6-month lag applies to TAC claims data, and a 2-month lag applies to alcohol related fatalities data.
- Note that reported data inclusive of February 2008 or February 2012 will have one extra day of exposure compared to non-leap years.

Status Report – Fatalities

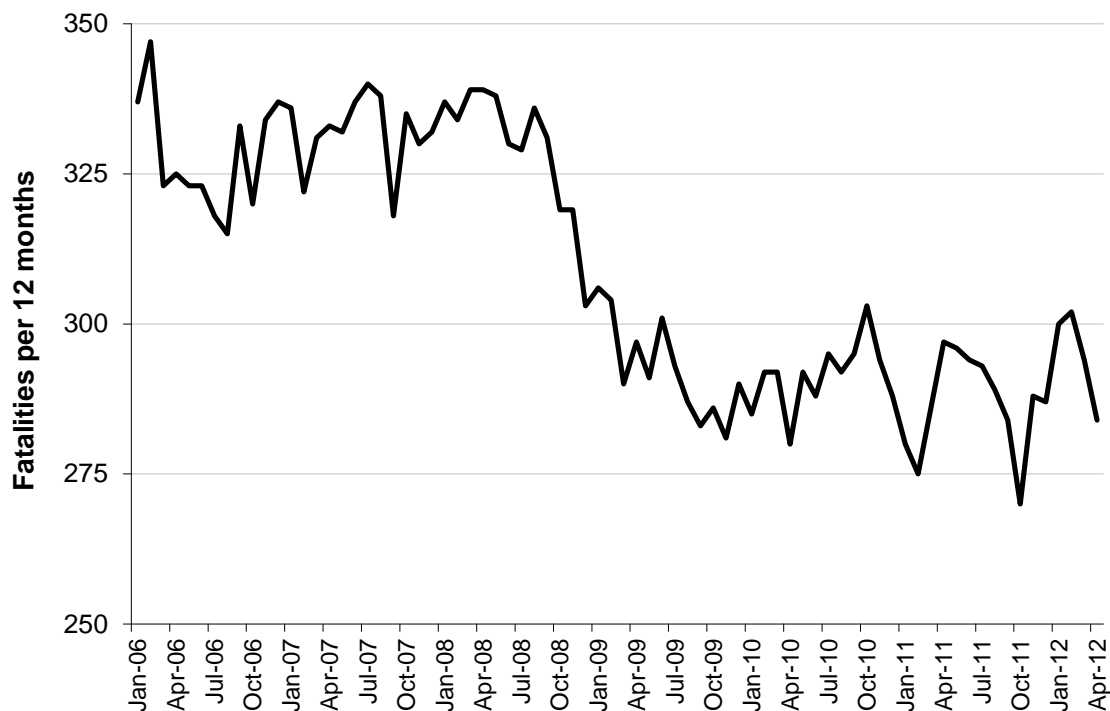
Fatalities (year to date, to end April 2012)

- The number of road fatalities in 2012 stands at 100, 3% less than at the same stage in 2011 (103).
- 26 people were fatally injured in March 2012 and 21 in April 2012 on Victorian roads. This compares to 34 in March 2011 and 31 in April 2011.

Category	2012	2011	2010	2012 v 2011		2012 v 2010		5 Year Av
Injuries (Rolling 12 Month Total)								
Fatal (to April)	284	297	280	-13	(-4%)	4	(1%)	309
per 10,000 veh	0.66	0.71	0.69	-0.05	(-7%)	-0.03	(-4%)	0.62
per 100,000 pop	5.03	5.33	5.12	-0.3	(-6%)	-0.09	(-2%)	6.18

Accidents (Rolling 12 Month Total)								
Fatal (to April)	260	270	260	-10	(-4%)	0	(0%)	280
per 10,000 veh	0.61	0.65	0.64	-0.04	(-6%)	-0.03	(-5%)	0.72
per 100,000 pop	4.60	4.84	4.76	-0.24	(-5%)	-0.16	(-3%)	5.34

Victoria – Fatalities, rolling 12 months total



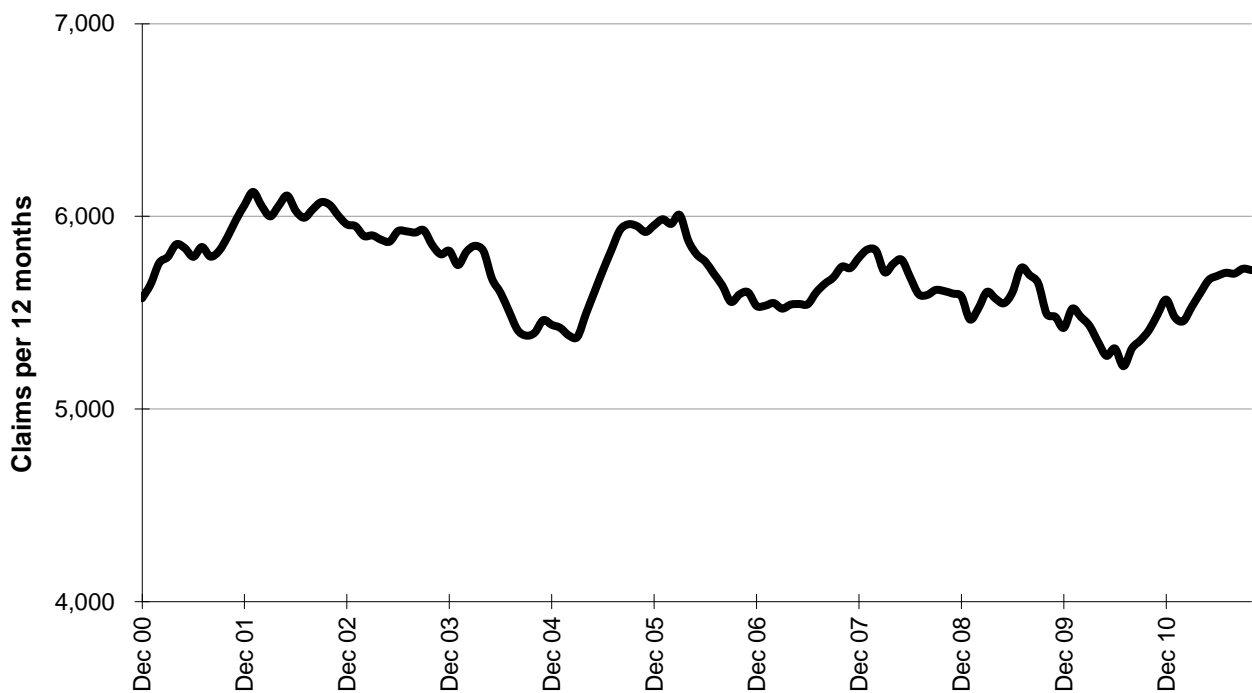
Note: Data is subject to revision as additional information about known accidents is received, and as new accident reports are received and processed.

Status Report – Claims involving an acute hospital admission* (by claim acceptance date)

Claims (year to date, to midnight 31 October 2011)

Category	2011	2010	2009	2011 v 2010	2011 v 2009	5 Year Av
Claims involving an acute hospital admission (Rolling 12 Month Total)						
Claims (to October)	5,721	5,410	5,493	311	(6%)	5,570
per 10,000 veh	102.0	97.9	101.6	4.1	(4%)	107.2
per 100,000 pop	13.5	13.1	13.7	0.4	(3%)	14.5

Victoria – Claims involving an acute hospital admission, rolling 12 months total



Note: Data is subject to revision as additional information about known claims is received, and as new claims are received and processed.

*An acute hospital admission refers to a hospital admission that occurred within 7 days of accident.

Fatalities: 12 months to April

Category	2012	2011	2010	2012 v 2011	2012 v 2010	5 Year Av
Overview						
Fatalities	284	297	280	-13 (-4%)	4 (1%)	309
Accidents	260	270	260	-10 (-4%)	0 (0%)	280
Sex						
Male	204	221	207	-17 (-8%)	-3 (-1%)	222
Female	80	76	73	4 (5%)	7 (10%)	87
Roaduser						
Bicyclist	9	8	8	1 (13%)	1 (13%)	8
Driver	133	131	128	2 (2%)	5 (4%)	146
Motorcyclist	45	46	50	-1 (-2%)	-5 (-10%)	45
Passenger	47	75	47	-28 (-37%)	0 (0%)	61
Pedestrian	50	37	47	13 (35%)	3 (6%)	48
Location						
Melbourne	132	130	141	2 (2%)	-9 (-6%)	148
Rural Victoria	152	167	139	-15 (-9%)	13 (9%)	161
Agegroup						
0-4	2	8	4	-6 (-75%)	-2 (-50%)	5
5-15	7	8	10	-1 (-13%)	-3 (-30%)	9
16-17	9	6	6	3 (50%)	3 (50%)	9
18-20	32	35	27	-3 (-9%)	5 (19%)	33
21-25	35	41	27	-6 (-15%)	8 (30%)	38
26-29	22	23	21	-1 (-4%)	1 (5%)	24
30-39	43	28	43	15 (54%)	0 (0%)	45
40-49	31	38	36	-7 (-18%)	-5 (-14%)	41
50-59	30	34	32	-4 (-12%)	-2 (-6%)	35
60-69	29	27	26	2 (7%)	3 (12%)	23
70+	44	49	48	-5 (-10%)	-4 (-8%)	46
Alctime						
High (Melb)	67	70	82	-3 (-4%)	-15 (-18%)	79
High (Rural)	73	95	59	-22 (-23%)	14 (24%)	78
High (Vic)	140	165	141	-25 (-15%)	-1 (-1%)	158
Low (Melb)	65	60	59	5 (8%)	6 (10%)	69
Low (Rural)	79	72	80	7 (10%)	-1 (-1%)	83
Low (Vic)	144	132	139	12 (9%)	5 (4%)	152
Accident Type						
Intersection						
Adjacent direction	29	33	17	-4 (-12%)	12 (71%)	26
Opposing direction	5	8	6	-3 (-38%)	-1 (-17%)	9
Mid-block/other						
Head on	39	38	35	1 (3%)	4 (11%)	39
Same direction	12	18	20	-6 (-33%)	-8 (-40%)	18
Manoeuvre/o'taking	13	17	19	-4 (-24%)	-6 (-32%)	16
On path	5	8	7	-3 (-38%)	-2 (-29%)	6
Single vehicle	122	132	120	-10 (-8%)	2 (2%)	134
Other (incl peds)	59	43	56	16 (37%)	3 (5%)	61

Fatalities: 12 months to April

Category	2012	2011	2010	2012 v 2011	2012 v 2010	5 Year Av
Police Service Area (based on Local Government Area (see p.13))						
BALLARAT	5	11	4	-6 (-55%)	1 (25%)	6
BANYULE	3	3	1	0 (0%)	2 (200%)	2
BASS COAST	10	5	8	5 (100%)	2 (25%)	6
BAW BAW	2	15	3	-13 (-87%)	-1 (-33%)	9
BENALLA	6	12	11	-6 (-50%)	-5 (-45%)	8
BENDIGO	6	6	8	0 (0%)	-2 (-25%)	6
BOROONDARA	1	2	6	-1 (-50%)	-5 (-83%)	5
BRIMBANK	12	2	7	10 (500%)	5 (71%)	6
CAMPASPE	4	2	4	2 (100%)	0 (0%)	3
CARDINIA	12	9	2	3 (33%)	10 (500%)	5
CASEY	6	11	12	-5 (-45%)	-6 (-50%)	12
CENTRAL GOLDFIELDS	1	9	2	-8 (-89%)	-1 (-50%)	6
DAREBIN	3	3	0	0 (0%)	3 (300%)	4
EAST GIPPSLAND	6	8	11	-2 (-25%)	-5 (-45%)	11
FRANKSTON	2	7	4	-5 (-71%)	-2 (-50%)	6
GEELONG	14	10	11	4 (40%)	3 (27%)	7
GLEN EIRA	5	4	5	1 (25%)	0 (0%)	5
GREATER DANDENONG	5	4	7	1 (25%)	-2 (-29%)	6
HOBSONS BAY	1	1	1	0 (0%)	0 (0%)	3
HORSHAM	7	4	3	3 (75%)	4 (133%)	3
HUME	7	4	9	3 (75%)	-2 (-22%)	7
KINGSTON	5	3	5	2 (67%)	0 (0%)	5
KNOX	2	1	6	1 (100%)	-4 (-67%)	4
LA TROBE	5	6	6	-1 (-17%)	-1 (-17%)	6
MACEDON RANGES	6	3	8	3 (100%)	-2 (-25%)	7
MANNINGHAM	2	2	6	0 (0%)	-4 (-67%)	3
MARIBYRNONG	1	1	2	0 (0%)	-1 (-50%)	2
MAROONDAH	5	3	1	2 (67%)	4 (400%)	2
MELBOURNE	8	3	2	5 (167%)	6 (300%)	6
MELTON	7	8	4	-1 (-13%)	3 (75%)	5
MILDURA	3	3	5	0 (0%)	-2 (-40%)	4
MITCHELL	6	8	5	-2 (-25%)	1 (20%)	10
MONASH	3	5	7	-2 (-40%)	-4 (-57%)	6
MOONEE VALLEY	1	2	3	-1 (-50%)	-2 (-67%)	4
MOORABOOL	12	8	3	4 (50%)	9 (300%)	6
MORELAND	2	7	4	-5 (-71%)	-2 (-50%)	4
MORNINGTON PENINSULA	4	11	7	-7 (-64%)	-3 (-43%)	10
NILLUMBIK	3	2	0	1 (50%)	3 (300%)	1
NORTHERN GRAMPIANS	3	4	4	-1 (-25%)	-1 (-25%)	4
PORT PHILLIP	2	1	3	1 (100%)	-1 (-33%)	2
SHEPPARTON	8	2	3	6 (300%)	5 (167%)	6
SOUTHERN GRAMPIANS	6	5	1	1 (20%)	5 (500%)	6
STONNINGTON	2	1	0	1 (100%)	2 (200%)	1
SURF COAST	11	8	7	3 (38%)	4 (57%)	8
SWAN HILL	7	6	5	1 (17%)	2 (40%)	10
WANGARATTA	12	15	12	-3 (-20%)	0 (0%)	13
WARRNAMBOOL	5	7	7	-2 (-29%)	-2 (-29%)	7
WELLINGTON	4	7	2	-3 (-43%)	2 (100%)	6
WHITEHORSE	4	5	7	-1 (-20%)	-3 (-43%)	4
WHITTLESEA	6	7	13	-1 (-14%)	-7 (-54%)	7
WODONGA	3	3	6	0 (0%)	-3 (-50%)	4
WYNDHAM	5	7	5	-2 (-29%)	0 (0%)	5
YARRA	2	5	3	-3 (-60%)	-1 (-33%)	3
YARRA RANGES	11	6	9	5 (83%)	2 (22%)	10

Claims involving an acute hospital admission: 12 months to October (claim acceptance date)

Category	2011	2010	2009	2011 v 2010	2011 v 2009	5 Year Av
Overview						
Claims	5,721	5,410	5,493	311 (6%)	228 (4%)	5,570
Sex						
Male	3,295	3,116	3,237	179 (6%)	58 (2%)	3,239
Female	2,424	2,291	2,256	133 (6%)	168 (7%)	2,331
Roaduser						
Bicyclist	342	324	321	18 (6%)	21 (7%)	297
Driver	2,585	2,421	2,407	164 (7%)	178 (7%)	2,465
Motorcyclist	966	978	982	-12 (-1%)	-16 (-2%)	919
Passenger	1,075	1,027	1,055	48 (5%)	20 (2%)	1,130
Pedestrian	659	604	591	55 (9%)	68 (12%)	583
Tram/train	20	22	20	-2 (-9%)	0 (0%)	13
Location						
Melbourne	3,870	3,599	3,427	271 (8%)	443 (13%)	3,686
Rural Victoria	1,783	1,799	1,645	-16 (-1%)	138 (8%)	1,709
Agegroup						
0-4	50	43	56	7 (16%)	-6 (-11%)	50
5-15	202	225	182	-23 (-10%)	20 (11%)	225
16-17	117	132	160	-15 (-11%)	-43 (-27%)	165
18-20	562	532	604	30 (6%)	-42 (-7%)	601
21-25	738	638	703	100 (16%)	35 (5%)	724
26-29	410	434	424	-24 (-6%)	-14 (-3%)	432
30-39	911	860	940	51 (6%)	-29 (-3%)	946
40-49	848	796	833	52 (7%)	15 (2%)	810
50-59	702	680	595	22 (3%)	107 (18%)	622
60-69	503	441	398	62 (14%)	105 (26%)	414
70+	678	629	598	49 (8%)	80 (13%)	581
Alctime						
High (Melb)	1,794	1,587	1,627	207 (13%)	167 (10%)	1,691
High (Rural)	790	789	747	1 (0%)	43 (6%)	743
High (Vic)	2,609	2,380	2,604	229 (10%)	5 (0%)	2,537
Low (Melb)	2,076	2,012	1,800	64 (3%)	276 (15%)	1,995
Low (Rural)	993	1,010	898	-17 (-2%)	95 (11%)	966
Low (Vic)	3,112	3,030	2,889	82 (3%)	223 (8%)	3,033
Accident Type						
Intersection						
Adjacent direction	889	816	879	73 (9%)	10 (1%)	844
Opposing direction	469	436	444	33 (8%)	25 (6%)	440
Mid-block/other						
Head on	359	312	315	47 (15%)	44 (14%)	316
Same direction	943	860	751	83 (10%)	192 (26%)	770
Manoeuvre/o'taking	326	330	314	-4 (-1%)	12 (4%)	304
On path	188	211	225	-23 (-11%)	-37 (-16%)	197
Single vehicle	1,604	1,567	1,660	37 (2%)	-56 (-3%)	1,652
Other (incl peds)	943	878	901	65 (7%)	42 (5%)	795

Note: excludes rejected claims and claims for interstate crashes

Claims involving an acute hospital admission: 12 months to October (claim acceptance date)

Category	2011	2010	2009	2011 v 2010		2011 v 2009		5 Year Av
Police Service Area (based on Local Government Area (see p.13))								
BALLARAT	99	85	83	14	(16%)	16	(19%)	77
BANYULE	63	53	62	10	(19%)	1	(2%)	63
BASS COAST	85	82	60	3	(4%)	25	(42%)	84
BAW BAW	48	52	41	-4	(-8%)	7	(17%)	46
BENALLA	107	113	79	-6	(-5%)	28	(35%)	97
BENDIGO	101	83	77	18	(22%)	24	(31%)	75
BOROONDARA	138	139	121	-1	(-1%)	17	(14%)	138
BRIMBANK	157	92	142	65	(71%)	15	(11%)	134
CAMPASPE	28	43	40	-15	(-35%)	-12	(-30%)	39
CARDINIA	110	78	90	32	(41%)	20	(22%)	81
CASEY	244	231	208	13	(6%)	36	(17%)	224
CENTRAL GOLDFIELDS	8	5	14	3	(60%)	-6	(-43%)	12
DAREBIN	97	118	93	-21	(-18%)	4	(4%)	108
EAST GIPPSLAND	60	58	47	2	(3%)	13	(28%)	54
FRANKSTON	152	137	133	15	(11%)	19	(14%)	131
GEELONG	231	241	220	-10	(-4%)	11	(5%)	234
GLEN EIRA	158	179	145	-21	(-12%)	13	(9%)	165
GREATER DANDENONG	216	178	140	38	(21%)	76	(54%)	175
HOBSONS BAY	49	65	58	-16	(-25%)	-9	(-16%)	68
HORSHAM	42	31	18	11	(35%)	24	(133%)	33
HUME	140	155	161	-15	(-10%)	-21	(-13%)	157
KINGSTON	122	129	124	-7	(-5%)	-2	(-2%)	133
KNOX	124	120	116	4	(3%)	8	(7%)	130
LA TROBE	82	63	40	19	(30%)	42	(105%)	55
MACEDON RANGES	78	87	77	-9	(-10%)	1	(1%)	76
MANNINGHAM	59	73	56	-14	(-19%)	3	(5%)	72
MARIBYRNONG	104	54	65	50	(93%)	39	(60%)	70
MAROONDAH	74	78	64	-4	(-5%)	10	(16%)	70
MELBOURNE	226	202	188	24	(12%)	38	(20%)	187
MELTON	81	66	53	15	(23%)	28	(53%)	62
MILDURA	34	27	26	7	(26%)	8	(31%)	33
MITCHELL	69	91	72	-22	(-24%)	-3	(-4%)	75
MONASH	160	160	161	0	(0%)	-1	(-1%)	169
MOONEE VALLEY	98	87	91	11	(13%)	7	(8%)	107
MOORABOOL	93	74	138	19	(26%)	-45	(-33%)	88
MORELAND	152	131	123	21	(16%)	29	(24%)	137
MORNINGTON PENINSULA	182	145	163	37	(26%)	19	(12%)	168
NILLUMBIK	43	36	32	7	(19%)	11	(34%)	32
NORTHERN GRAMPPIANS	36	29	29	7	(24%)	7	(24%)	37
PORT PHILLIP	116	93	113	23	(25%)	3	(3%)	127
SHEPPARTON	63	57	86	6	(11%)	-23	(-27%)	84
SOUTHERN GRAMPPIANS	44	45	29	-1	(-2%)	15	(52%)	39
STONNINGTON	132	113	105	19	(17%)	27	(26%)	113
SURF COAST	79	78	92	1	(1%)	-13	(-14%)	83
SWAN HILL	21	25	42	-4	(-16%)	-21	(-50%)	35
WANGARATTA	92	109	111	-17	(-16%)	-19	(-17%)	107
WARRNAMBOOL	92	119	66	-27	(-23%)	26	(39%)	80
WELLINGTON	86	73	71	13	(18%)	15	(21%)	63
WHITEHORSE	117	131	103	-14	(-11%)	14	(14%)	133
WHITTLESEA	99	132	117	-33	(-25%)	-18	(-15%)	116
WODONGA	48	69	50	-21	(-30%)	-2	(-4%)	58
WYNDHAM	152	107	101	45	(42%)	51	(50%)	118
YARRA	106	121	95	-15	(-12%)	11	(12%)	97
YARRA RANGES	199	196	204	3	(2%)	-5	(-2%)	201

Fatalities: Victorian monthly totals since 1951

Year	Jan	Feb	Mar	Apr	May	Jun	Jul	Aug	Sep	Oct	Nov	Dec	Totals
1951							61	59	52	38	29	41	
1952	45	40	54	61	54	69	67	55	44	44	31	20	584
1953	23	28	54	58	49	42	50	37	44	27	36	32	480
1954	44	42	28	60	55	36	63	33	25	52	30	41	509
1955	44	36	45	55	48	56	64	44	44	32	40	40	548
1956	34	48	51	67	53	65	71	47	39	39	44	48	606
1957	50	41	46	58	52	54	57	53	51	46	32	49	589
1958	50	38	42	58	54	41	54	53	57	40	57	52	596
1959	50	57	61	50	75	55	42	48	52	55	63	63	671
1960	49	53	57	76	70	70	67	62	61	77	52	66	760
1961	63	57	68	74	58	68	78	82	59	62	60	65	794
1962	65	41	76	78	72	80	70	77	62	53	64	70	808
1963	67	56	65	85	66	68	77	55	55	58	61	67	780
1964	73	71	78	71	83	89	80	89	67	66	62	75	904
1965	63	64	86	88	80	87	79	69	81	77	68	87	929
1966	75	59	75	103	74	86	87	80	75	66	90	85	955
1967	61	79	91	97	81	71	59	67	70	68	60	83	887
1968	70	78	86	78	73	76	73	77	72	80	81	105	949
1969	79	68	79	87	86	77	87	83	87	83	94	101	1,011
1970	85	84	106	80	87	88	110	106	78	95	68	74	1,061
1971	83	75	77	68	76	86	85	72	78	73	74	76	923
1972	61	62	75	82	75	71	98	85	83	62	80	81	915
1973	75	75	95	85	64	66	61	85	89	88	66	86	935
1974	56	62	81	60	70	73	67	62	53	70	80	72	806
1975	67	65	87	73	97	94	57	75	69	66	71	89	910
1976	79	78	88	78	69	79	60	70	82	78	77	100	938
1977	65	71	89	79	65	79	70	91	68	74	96	107	954
1978	75	54	95	63	64	69	68	77	65	84	83	72	869
1979	63	60	86	75	45	64	66	75	69	79	72	93	847
1980	48	55	66	59	47	56	60	53	45	58	61	49	657
1981	69	60	58	61	74	65	61	63	68	71	59	57	766
1982	55	53	59	59	67	45	47	71	53	69	65	66	709
1983	42	59	53	63	62	61	65	51	59	43	54	52	664
1984	65	48	58	50	56	48	46	50	71	53	55	58	658
1985	56	47	50	65	75	50	51	50	58	61	56	64	683
1986	56	50	70	69	59	53	42	54	54	52	59	51	669
1987	62	43	57	52	63	59	62	49	62	61	55	80	705
1988	49	58	69	54	79	50	54	52	64	59	43	70	701
1989	76	65	80	59	67	73	52	65	82	50	41	66	776
1990	48	44	55	39	56	64	41	34	48	35	40	44	548
1991	45	39	70	30	34	29	44	47	41	36	35	53	503
1992	34	33	34	47	33	29	23	27	28	38	30	40	396
1993	27	40	37	39	44	33	33	27	34	39	43	40	436
1994	36	31	44	35	27	33	29	37	17	27	32	30	378
1995	38	35	26	33	34	41	27	34	34	32	38	46	418
1996	40	47	35	38	28	29	30	35	49	24	33	30	418
1997	36	25	30	30	40	22	39	26	26	29	39	35	377
1998	29	29	32	36	31	22	40	19	37	36	49	30	390
1999	32	31	35	35	34	24	35	26	28	38	29	37	384
2000	32	26	46	32	39	32	33	29	36	29	44	29	407
2001	44	30	31	32	31	41	34	37	35	51	41	37	444
2002	32	31	45	31	45	32	27	25	31	30	31	37	397
2003	21	41	36	28	31	28	20	23	23	24	24	31	330
2004	32	22	30	30	46	28	27	26	22	28	25	27	343
2005	33	27	47	21	29	23	30	25	25	33	17	36	346
2006	24	37	23	23	27	23	25	22	43	20	31	39	337
2007	23	23	32	25	26	28	28	20	23	37	26	41	332
2008	28	20	37	25	25	20	27	27	18	25	26	25	303
2009	31	18	23	32	19	30	19	21	14	28	21	34	290
2010	26	25	23	20	31	26	26	18	17	36	12	28	288
2011	18	20	34	31	30	24	25	14	12	22	30	27	287
2012	31	22	26	21									100
Ave	50	47	57	55	55	53	53	51	51	51	50	56	631
Max	85	84	106	103	97	94	110	106	89	95	96	107	1,061
Min	18	18	23	20	19	20	19	14	12	20	12	20	287

Fatalities by Week (2007 to 2012)

Week Ending	2007	2008	2009	2010	2011	2012	Cumulative 2012	% Change 2012-2011	12 Month Moving Total
1-Jan	3	1	3	1	2	1	1	-50%	286
8-Jan	2	8	11	6	1	3	4	33%	288
15-Jan	7	5	6	1	6	9	13	44%	291
22-Jan	5	4	2	9	4	7	20	54%	294
29-Jan	5	8	8	6	4	10	30	76%	300
5-Feb	7	5	1	9	8	4	34	36%	296
12-Feb	4	4	10	5	3	2	36	29%	295
19-Feb	10	4	3	8	5	12	48	45%	302
26-Feb	3	8	5	4	4	4	52	41%	302
4-Mar	9	8	2	6	8	2	54	20%	296
11-Mar	9	5	6	5	6	4	58	14%	294
18-Mar	3	13	3	4	9	12	70	17%	297
25-Mar	8	7	7	8	8	4	74	9%	293
1-Apr	4	10	8	5	5	7	81	11%	295
8-Apr	11	3	5	4	12	7	88	4%	290
15-Apr	4	6	8	6	5	3	91	1%	288
22-Apr	3	6	10	4	6	6	97	1%	288
29-Apr	7	5	6	4	7	2	99	-4%	283
6-May	3	7	7	3	4	10	109	2%	289
13-May	6	4	4	9	7	2	111	-3%	284
20-May	8	8	1	6	11	5	116	-7%	278
27-May	6	6	3	12	4	4	120	-7%	278
3-Jun	15	2	7	2	5				
10-Jun	3	6	6	7	9				
17-Jun	4	4	8	8	3				
24-Jun	7	7	6	5	6				
1-Jul	2	5	7	8	5				
8-Jul	9	10	9	4	10				
15-Jul	7	2	2	3	5				
22-Jul	6	3	5	5	8				
29-Jul	5	8	3	10	2				
5-Aug	2	8	3	7	4				
12-Aug	2	6	11	3	6				
19-Aug	4	3	4	5	1				
26-Aug	11	7	1	2	1				
2-Sep	3	5	4	3	3				
9-Sep	7	3	1	4	3				
16-Sep	4	6	7	1	3				
23-Sep	8	6	2	6	1				
30-Sep	5	6	2	4	5				
7-Oct	12	8	2	12	7				
14-Oct	6	4	8	7	2				
21-Oct	8	4	9	8	3				
28-Oct	6	4	8	6	7				
4-Nov	6	4	4	5	5				
11-Nov	7	7	6	0	12				
18-Nov	4	10	6	3	8				
25-Nov	7	3	4	3	5				
2-Dec	8	4	5	7	7				
9-Dec	16	9	5	6	6				
16-Dec	5	3	11	6	7				
23-Dec	8	9	10	9	6				
31-Dec	8	2	5	4	3				
Total	332	303	290	288	287				

Alcohol Related Fatalities

NOTE: UPDATES TO THIS DATA WERE NOT AVAILABLE AT TIME OF REPORT

BAC Fatalities (12 months to April 2010)

- 24% of fatally injured and tested drivers and riders had a BAC at 0.05 g/100ml or over (41 of 172) compared to 25% over the previous 12 month period (43 of 169).
- In Melbourne, 21 drivers/riders fatally injured and tested were at or over 0.05, with 38% of these having a BAC in excess of 0.15 g/100ml. Across rural Victoria, 20 drivers/riders fatally injured and tested were at or over 0.05, with 65% of these having a BAC over 0.15.
- Of the 41 drivers and riders fatally injured and tested at or over 0.05, 15% (6) were aged under 21, 39% (16) were aged 21-29, 27% (11) were aged 30-39 and 20% (8) were aged 40 years and over. In the previous year (43 fatally injured) the corresponding figures were 19% (8), 28% (12), 19% (8) and 35% (15), respectively.

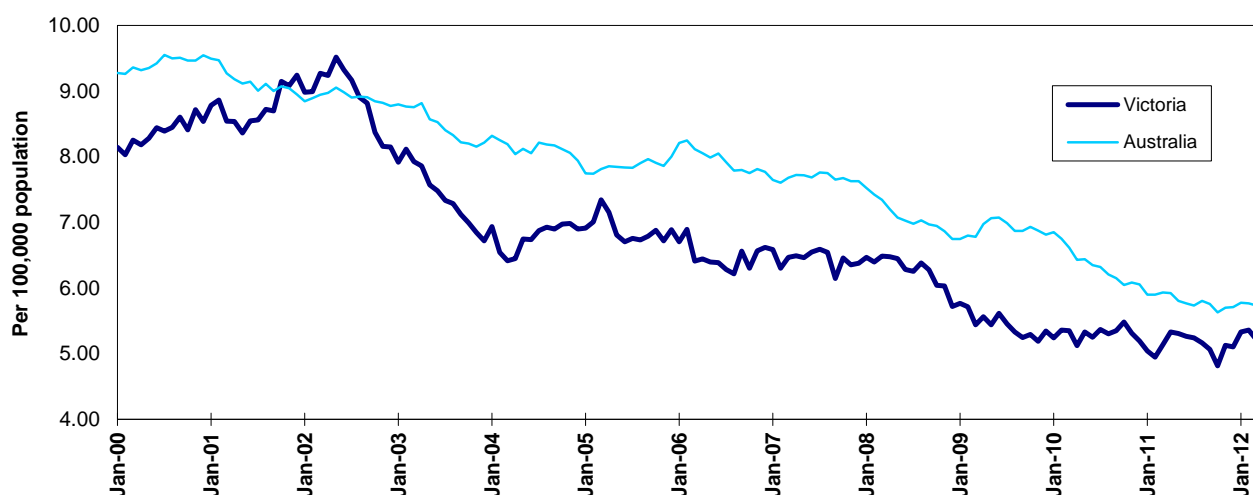
Category	2010	2009	2008	2010 v 2009	2010 v 2008	5 Year Av
Melbourne Drivers and Riders						
<0.05	55	63	63	-8	(-13%)	62
[a] at 0.05 & above	21	17	25	4	(24%)	21
% at 0.05 & above	(28%)	(21%)	(28%)			(25%)
[b] >0.15	8	10	12	-2	(-20%)	9
%>0.15	(11%)	(13%)	(14%)			(11%)
[b] as a % of [a]	(38%)	(59%)	(48%)			(43%)
BAC Unknown	5	3	1	2	(67%)	3
Country Drivers and Riders						
<0.05	76	63	90	13	(21%)	78
[a] at 0.05 & above	20	26	32	-6	(-23%)	26
% at 0.05 & above	(21%)	(29%)	(26%)			(25%)
[b] >0.15	13	17	20	-4	(-24%)	17
%>0.15	(14%)	(19%)	(16%)			(16%)
[b] as a % of [a]	(65%)	(65%)	(63%)			(64%)
BAC Unknown	7	2	1	5	(250%)	5
Victorian Total Drivers and Riders						
<0.05	131	126	153	5	(4%)	140
[a] at 0.05 & above	41	43	57	-2	(-5%)	47
% at 0.05 & above	(24%)	(25%)	(27%)			(25%)
[b] >0.15	21	27	32	-6	(-22%)	26
%>0.15	(12%)	(16%)	(15%)			(14%)
[b] as a % of [a]	(51%)	(63%)	(56%)			(54%)
BAC Unknown	12	5	2	7	(140%)	7
Victorian Total Pedestrians						
<0.05	32	35	38	-3	(-9%)	33
[a] at 0.05 & above	8	21	9	-13	(-62%)	14
% at 0.05 & above	(20%)	(38%)	(19%)			(30%)
[b] >0.15	3	10	8	-7	(-70%)	9
%>0.15	(8%)	(18%)	(17%)			(19%)
[b] as a % of [a]	(38%)	(48%)	(89%)			(62%)
BAC Unknown	6	4	2	2	(50%)	4

The National Picture

State	Fatalities (12 months to April)					2012 v 2011	
	2012	2011	2010	2009			
NSW	386	375	445	416	11	(3%)	
VIC	284	297	280	297	-13	(-4%)	
QLD	274	257	282	342	17	(7%)	
SA	100	109	127	110	-9	(-8%)	
WA	176	203	179	207	-27	(-13%)	
TAS	22	30	48	49	-8	(-27%)	
NT	50	44	36	66	6	(14%)	
ACT	1	14	19	15	-13	(-93%)	
AUST TOTAL	1,293	1,329	1,416	1,502	-36	(-3%)	
AUST minus VIC	1,009	1,032	1,136	1,205	-23	(-2%)	

State	Fatalities per 10,000 registered vehicles (12 months to April)			Fatalities per 100,000 population (12 months to April)		
	2012	2011	2010	2012	2011	2010
NSW	0.79	0.79	0.96	5.27	5.16	6.41
VIC	0.66	0.71	0.69	5.03	5.33	5.35
QLD	0.80	0.76	0.85	5.95	5.66	6.72
SA	0.78	0.87	1.04	6.02	6.61	7.68
WA	0.90	1.07	0.97	7.45	8.78	7.77
TAS	0.52	0.72	1.18	4.30	5.90	10.72
NT	3.59	3.19	2.72	21.71	19.14	15.93
ACT	0.04	0.54	0.76	0.28	3.92	4.81
AUST TOTAL	0.78	0.82	0.89	5.69	5.92	6.61
AUST minus VIC	0.82	0.85	0.96	5.90	6.11	7.03

Victoria v Australia – 12 Month Moving Fatality Rate



Booze-Bus Random Breath Testing*

12 months to June 2011 (monthly totals)

	2010						2011					
	Jul	Aug	Sep	Oct	Nov	Dec	Jan	Feb	Mar	Apr	May	Jun
Melbourne	86,195	79,603	91,365	78,241	81,341	97,729	78,392	67,733	80,249	85,872	91,495	97,118
Country	13,420	9,459	14,650	15,957	19,375	19,112	20,355	16,658	11,753	13,440	15,127	16,814
Vic Total	99,615	89,062	106,015	94,198	100,716	116,841	98,747	84,391	92,002	99,312	106,622	113,932

12 months to June 2011 vs previous 12 months

	2011	2010	2009	2011 v 2010	2011 v 2009
Melbourne	1,015,333	1,075,217	1,078,484	-59,884 (-6%)	-63,151 (-6%)
Country	186,120	217,077	224,767	-30,957 (-14%)	-38,647 (-17%)
Vic Total	1,201,453	1,292,294	1,303,251	-90,841 (-7%)	-101,798 (-8%)

*Due to police industrial action, random breath testing data is not available from July to October 2011.

Mobile Safety Camera Data

Speed Infringements Issued from Mobile Cameras (monthly totals)

Monthly Average = 48,681

2011						2012					
May	Jun	Jul	Aug	Sep	Oct	Nov	Dec	Jan	Feb	Mar	Apr
53,774	50,556	48,508	47,459	45,614	13,049	88,160	44,408	54,857	43,904	50,948	42,935

Excessive Speed Infringements Issued from Mobile Cameras (monthly totals)

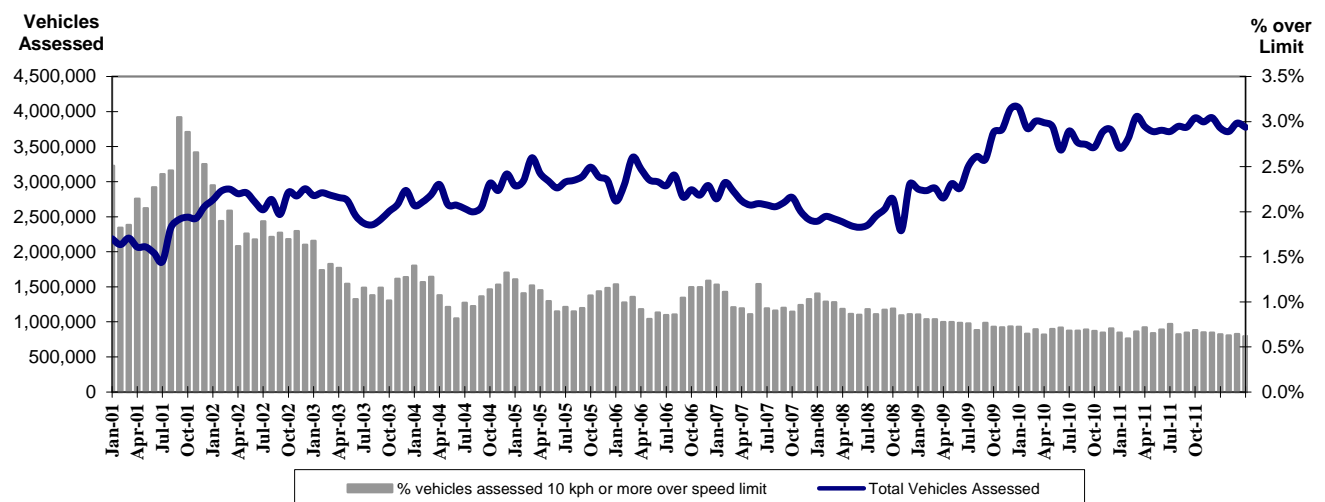
Monthly Average = 448

2011						2012					
May	Jun	Jul	Aug	Sep	Oct	Nov	Dec	Jan	Feb	Mar	Apr
525	587	460	467	421	176	658	450	487	340	435	374

Notes: An ESI is defined as 25km/h over the speed limit except in a 110km/h zone where it is 20km/h over the limit.

Note that the Victoria Police Traffic Camera Office was not approving infringements during police industrial action between 30th September and 24th of October. This resulted in a backlog of infringements which were subsequently processed in November. The issuing of "on-the-spot" fine numbers also dropped during the industrial action.

Mobile Safety Cameras – Vehicles assessed and percentage of vehicles assessed 10km/h or more over speed limit per month



Explanations and References

Hi-Alcetime is those times of the day and week (*shaded* in the table below) when casualty crashes are ten times more likely to involve alcohol than casualty crashes at other (Lo-Alcetime) times.

	12am - 6am	6am - 8am	8am - 10am	10am - 2pm	2pm - 4pm	4pm - 6pm	6pm - 12pm
Monday							
Tuesday							
Wednesday							
Thursday							
Friday							
Saturday							
Sunday							

Police Service Areas align with Local Government Areas. Most Police Service Areas are equivalent to a single Local Government Area, while the remainder comprise two or three Local Government Areas.

Police Service Area	Local Government Area(s)	Police Service Area	Local Government Area(s)
BALLARAT	BALLARAT, PYRENEES	MAROONDAH	MAROONDAH
BANYULE	BANYULE	MELBOURNE	MELBOURNE
BASS COAST	BASS COAST, SOUTH GIPPSLAND	MELTON	MELTON
BAW BAW	BAWBAW	MILDURA	MILDURA
BENALLA	BENALLA, MANSFIELD, MURRINDINDI	MITCHELL	MITCHELL, STRATHBOGIE
BENDIGO	GREATER BENDIGO	MONASH	MONASH
BOROONDARA	BOROONDARA	MOONEE VALLEY	MOONEE VALLEY
BRIMBANK	BRIMBANK	MOORABOOL	GOLDEN PLAINS, HEPBURN, MOORABOOL
CAMPASPE	CAMPASPE	MORELAND	MORELAND
CARDINIA	CARDINIA	MORNINGTON PENINSULA	MORNINGTON PENINSULA
CASEY	CASEY	NILLUMBIK	NILLUMBIK
CENTRAL GOLDFIELDS	CENTRAL GOLDFIELDS, LODDON	NORTHERN GRAMPIANS	ARARAT, NORTHERN GRAMPIANS, YARRIAMIACK
GREATER DANDENONG	GREATER DANDENONG	PORT PHILLIP	PORT PHILLIP
DAREBIN	DAREBIN	SHEPPARTON	GREATER SHEPPARTON
EAST GIPPSLAND	EAST GIPPSLAND	SOUTHERN GRAMPIANS	GLENELG, SOUTHERN GRAMPIANS
FRANKSTON	FRANKSTON	STONNINGTON	STONNINGTON
GEELONG	GREATER GEELONG, QUEENSCLIFF	SURFCOAST	SURFCOAST, COLAC OTWAY
GLENEIRA	GLENEIRA, BAYSIDE	SWANHILL	BULOKE, GANNAWARRA, SWAN HILL
HOBSONS BAY	HOBSONSBAY	WANGARATTA	ALPINE, WANGARATTA
HORSHAM	HINDMARSH, HORSHAM, WESTWIMMERA	WARRNAMBOOL	CORANGAMITE, MOYNE, WARRNAMBOOL
HUME	HUME	WELLINGTON	WELLINGTON
KINGSTON	KINGSTON	WHITEHORSE	WHITEHORSE
KNOX	KNOX	WHITTLESEA	WHITTLESEA
LATROBE	LATROBE	WODONGA	INDIGO, TOWONG, WODONGA
MACEDON RANGES	MOUNT ALEXANDER, MACEDON RANGES	WYNDHAM	WYNDHAM
MANNINGHAM	MANNINGHAM	YARRA	YARRA
MARIBYRNONG	MARIBYRNONG	YARRA RANGES	YARRA RANGES

Useful Internet Sites

TAC Sites

- TAC Safety (Road Safety) www.tacsafety.com.au
- TAC How safe is your car www.howsafeisyourcar.com.au
- TAC Learners Log www.learnerslog.com.au
- TAC Motorcycle Safety Website www.spokes.com.au
- TAC Corporate site www.tac.vic.gov.au

Victorian Sites:

- VicRoads www.vicroads.vic.gov.au
- Victoria Police www.police.vic.gov.au
- Parliamentary Road Safety Committee www.parliament.vic.gov.au/rsc/
- ARRB Transport Research www.arrb.com.au
- RACV www.racv.com.au
- Monash University Accident Research Centre www.monash.edu.au/muarc
- Roadsafe www.roadsafe.org.au

National and Interstate Sites:

- Australian Transport Safety Bureau www.atsb.gov.au
- Roads and Traffic Authority (NSW) www.rta.nsw.gov.au
- Queensland Transport - Road Safety transport.qld.gov.au/Home/Safety/Road
- Department of Transport (SA) www.transport.sa.gov.au/index.htm
- Main Roads Western Australia - Road Safety www.mrwa.wa.gov.au

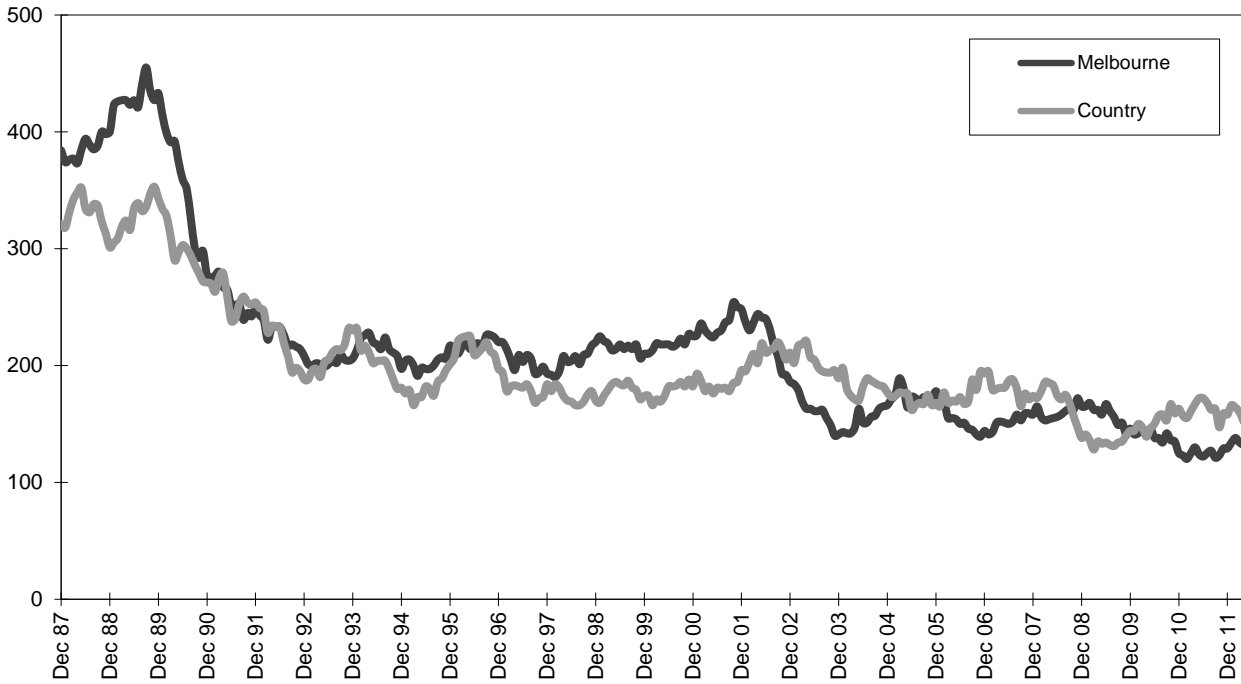
International Sites:

- National Highway Traffic Safety Admin (USA) www.nhtsa.dot.gov
- Swedish Road and Transport Institute (VTI) www.vti.se
- SWOV Institute for Road Safety Research www.swov.nl

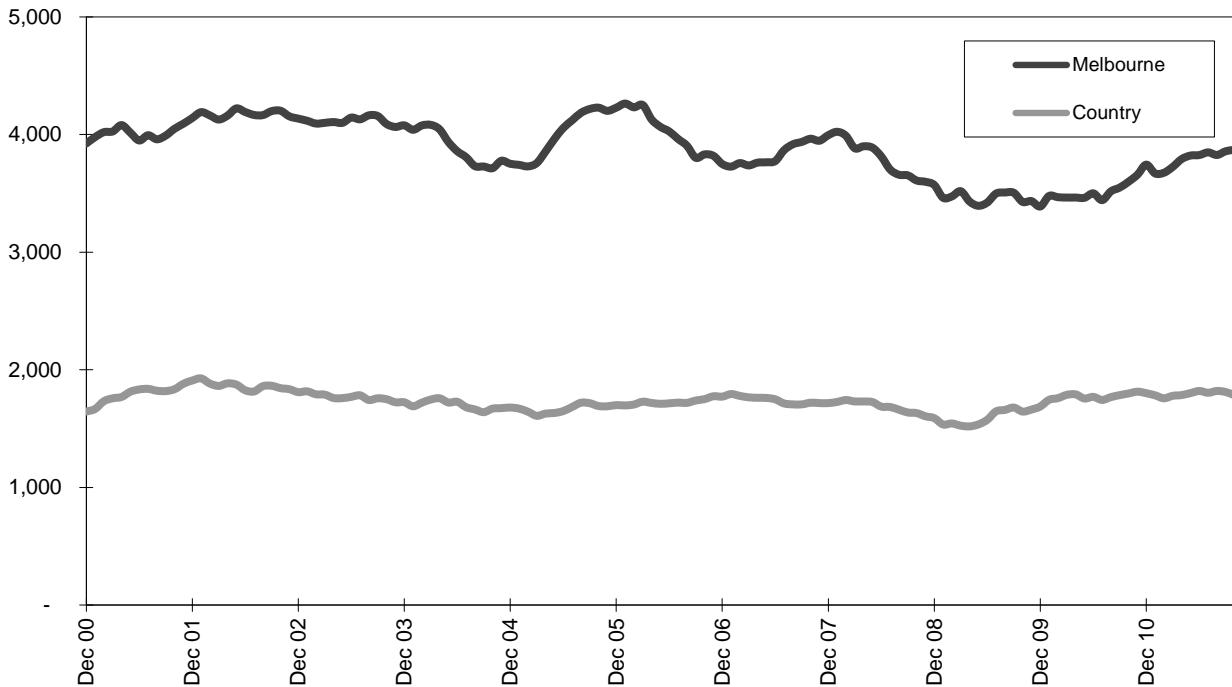
Related Sites:

- Australian Drug Foundation www.adf.org.au
- Amy Gillett Foundation www.amygillett.org.au

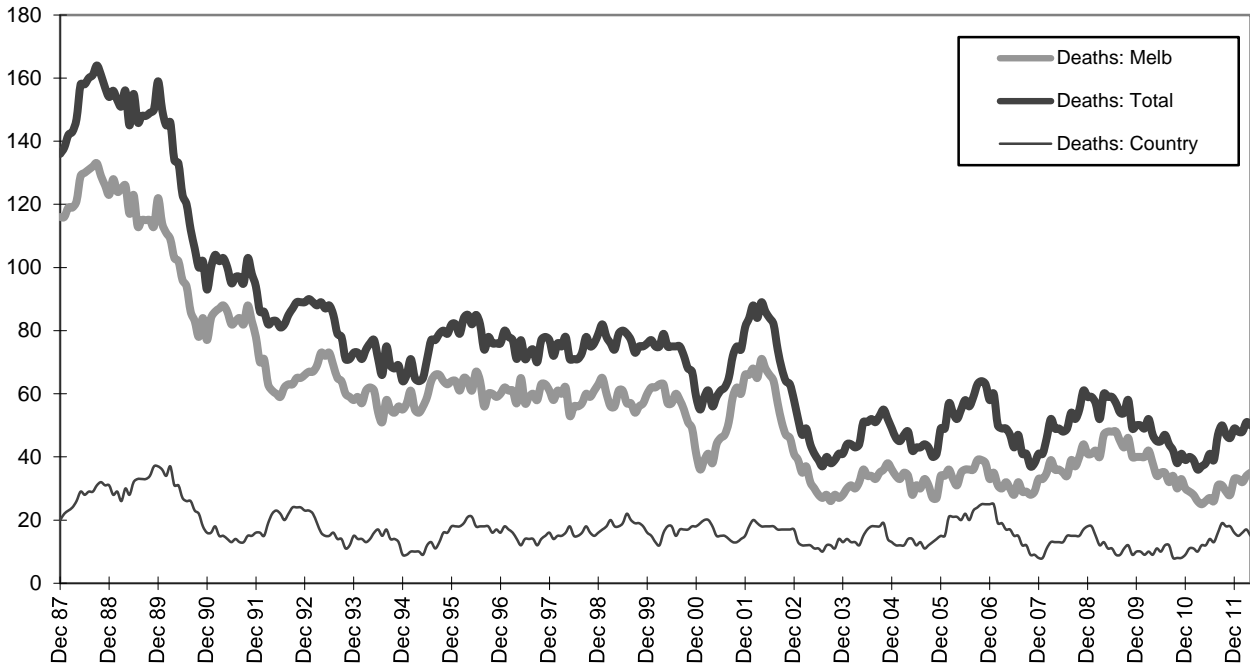
Graph 1a – Melbourne/country fatalities



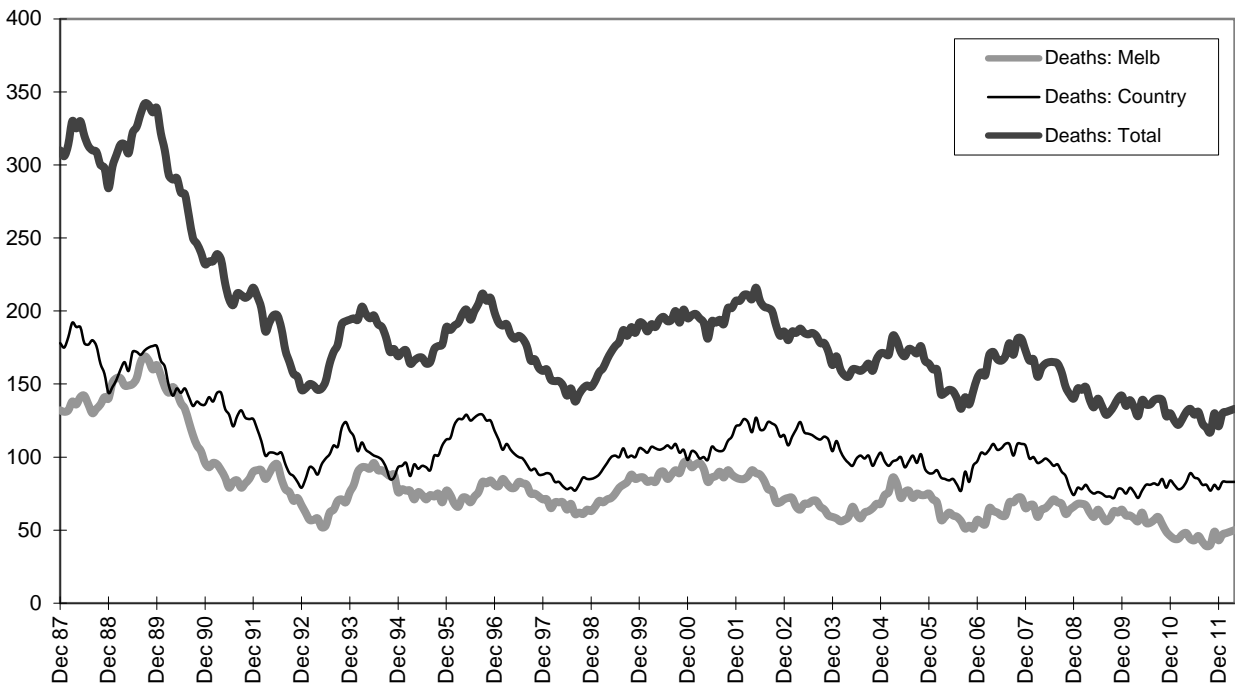
Graph 1b – Melbourne/country Claims involving an acute hospital admission



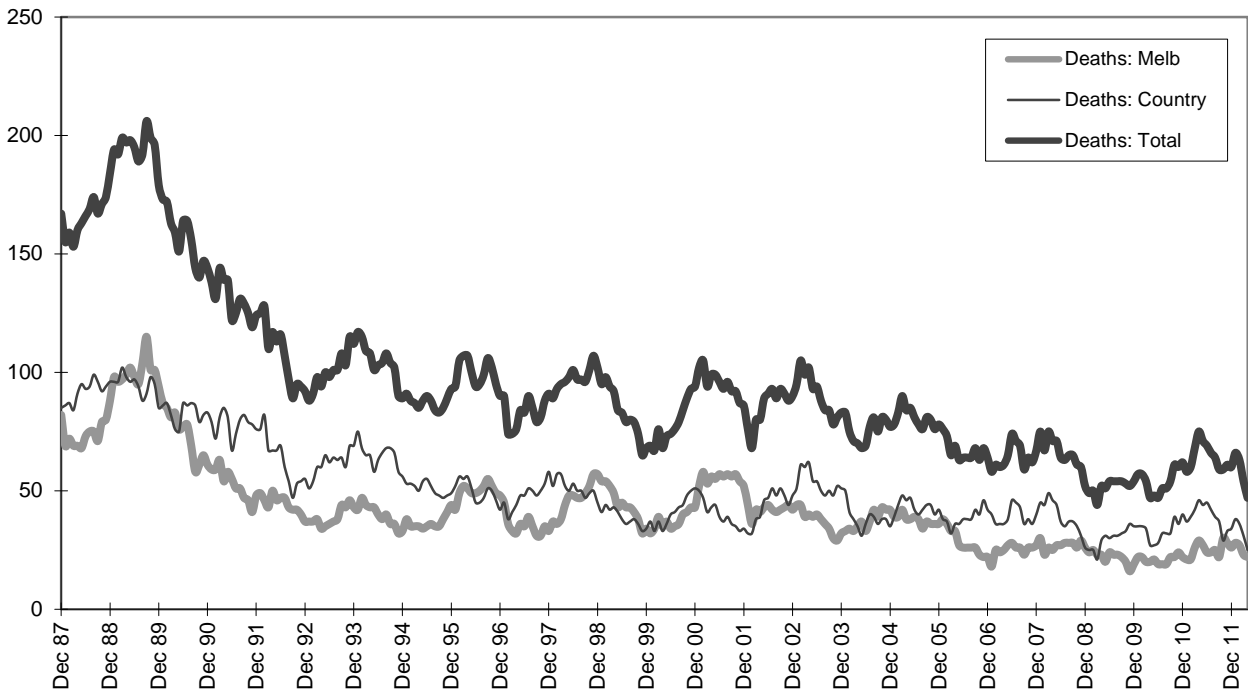
Graph 2a – Pedestrian fatalities (Melbourne/country)



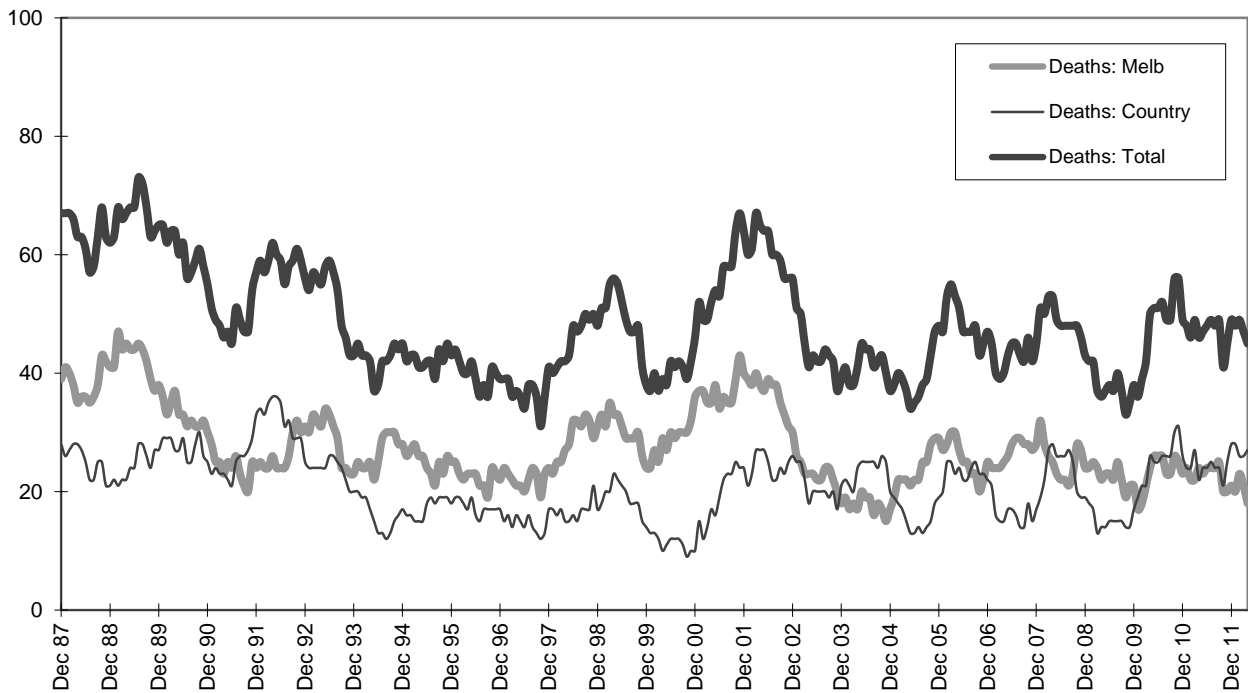
Graph 2b – Driver fatalities (Melbourne/country)



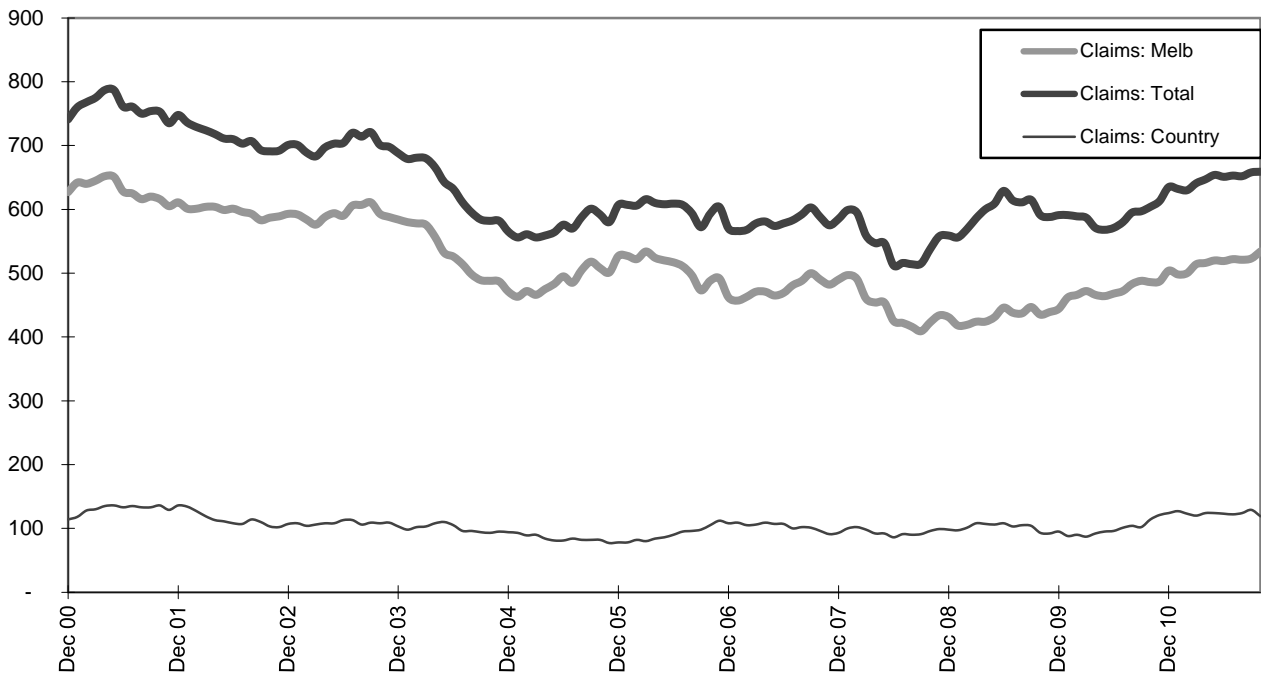
Graph 2c – Passenger fatalities (Melbourne/country)



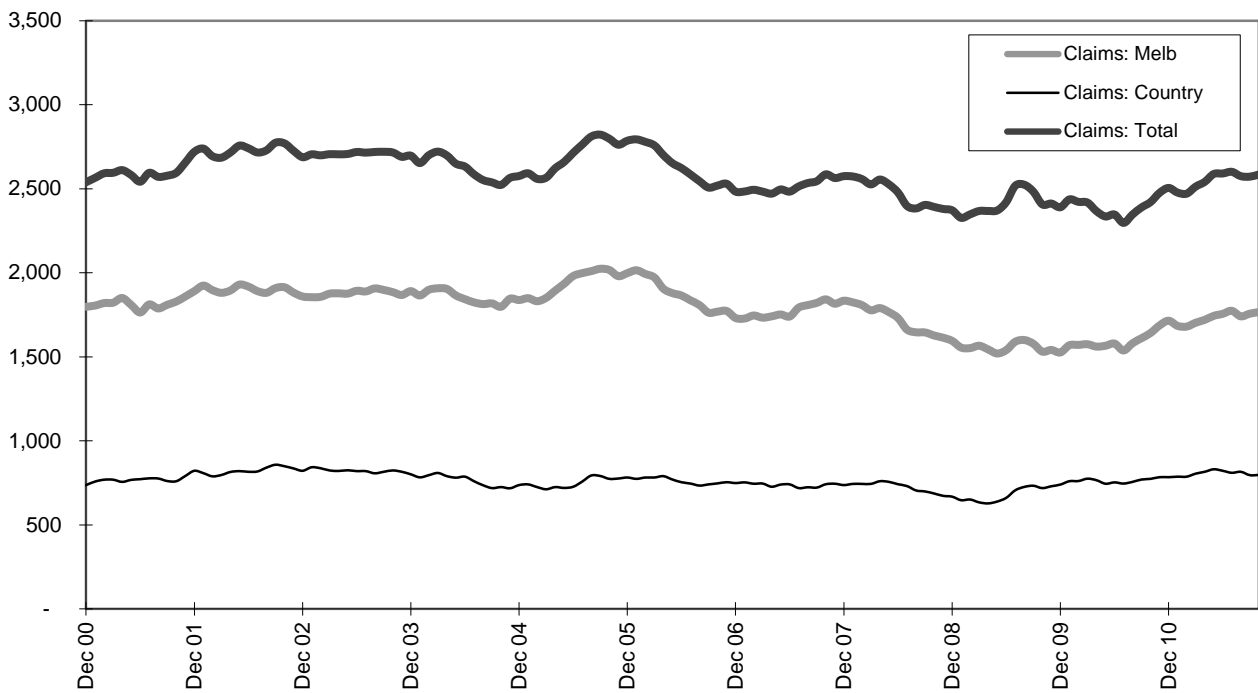
Graph 2d –Motorcyclist fatalities (Melbourne/country)



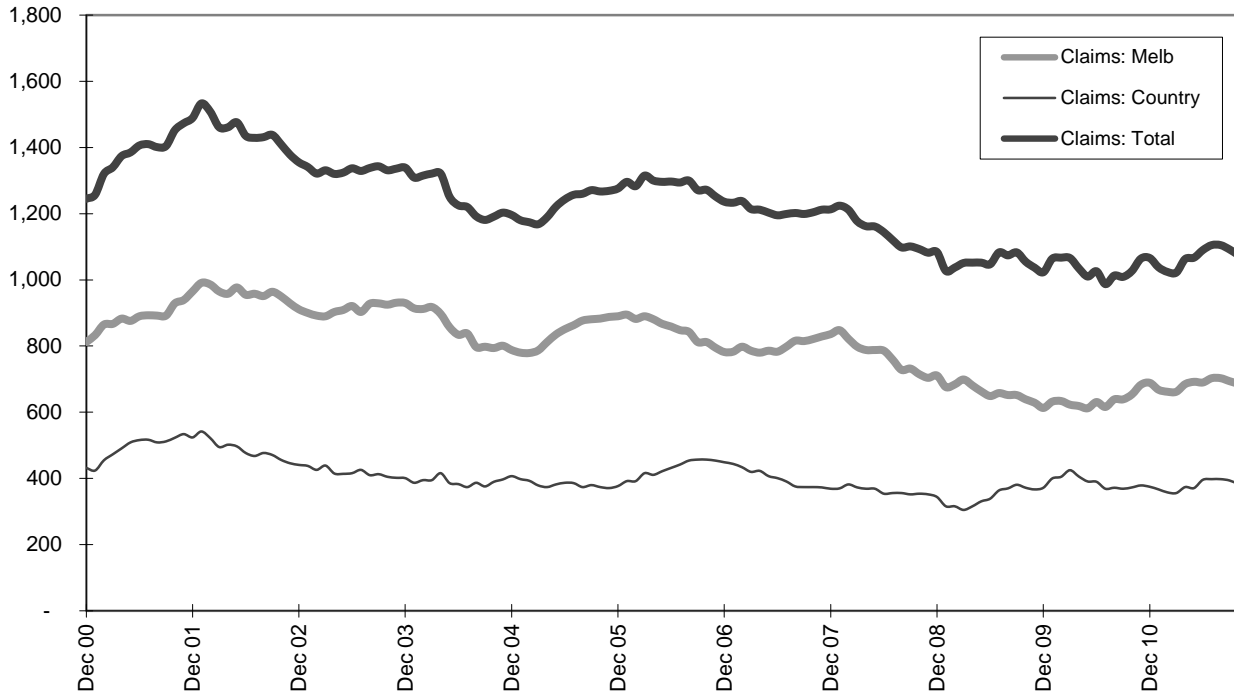
Graph 3a – Pedestrian Claims involving an acute hospital admission (Melbourne/country)



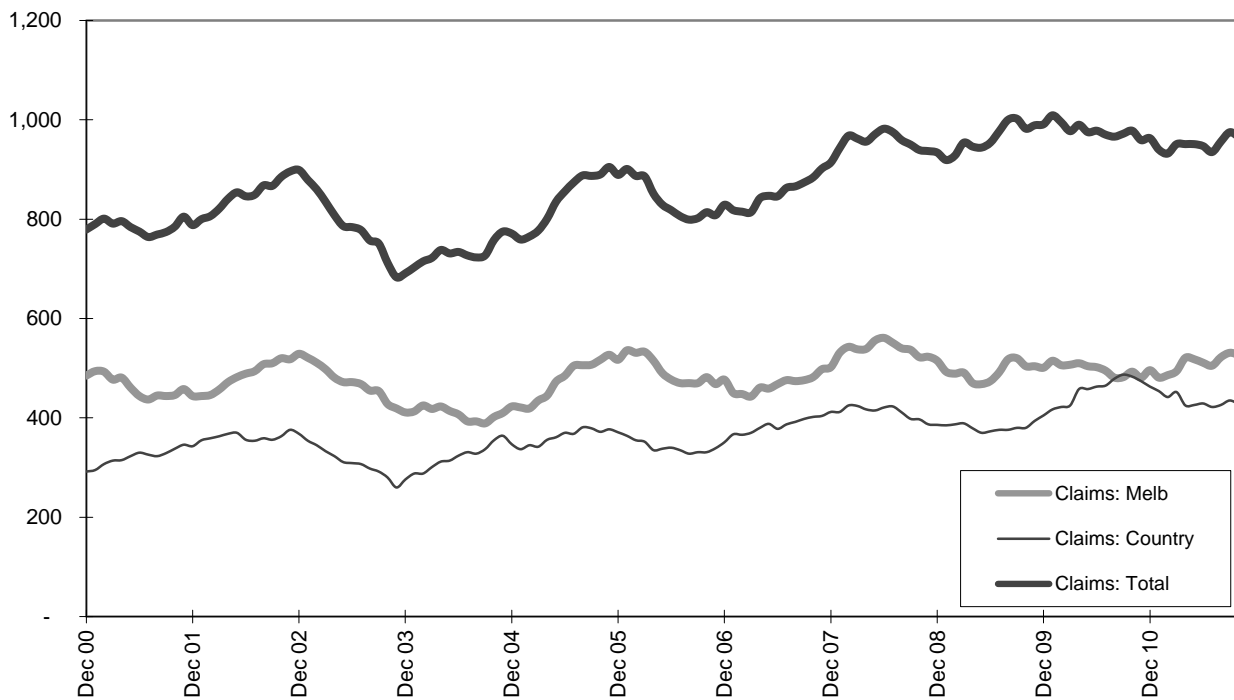
Graph 3b – Driver Claims involving an acute hospital admission (Melbourne/country)



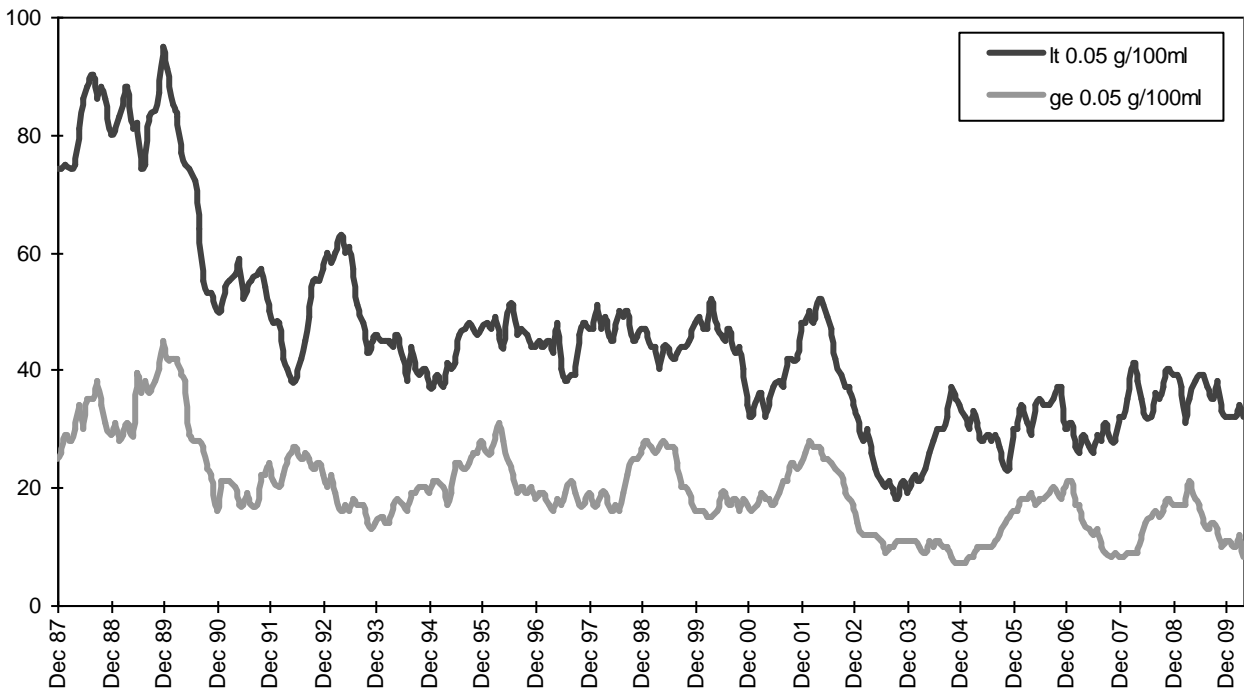
Graph 3c – Passenger Claims involving an acute hospital admission (Melbourne/country)



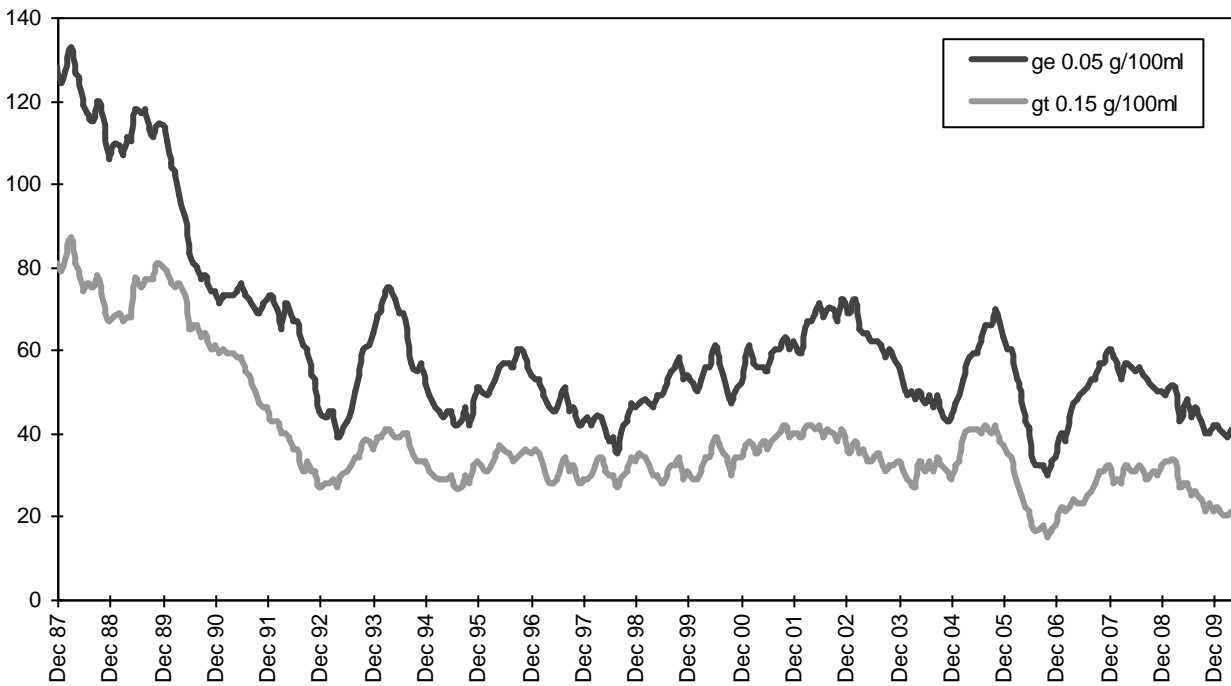
Graph 3d – Motorcyclist Claims involving an acute hospital admission (Melbourne/country)



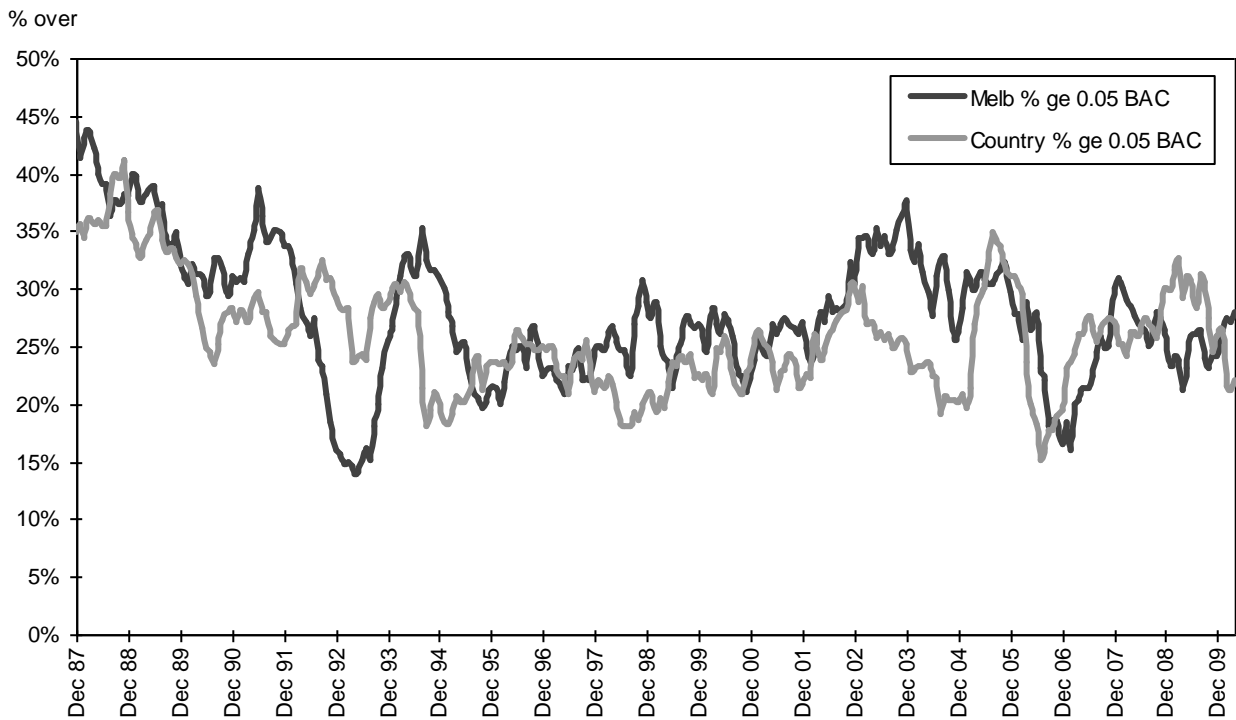
Graph 4a – Pedestrian fatalities by BAC



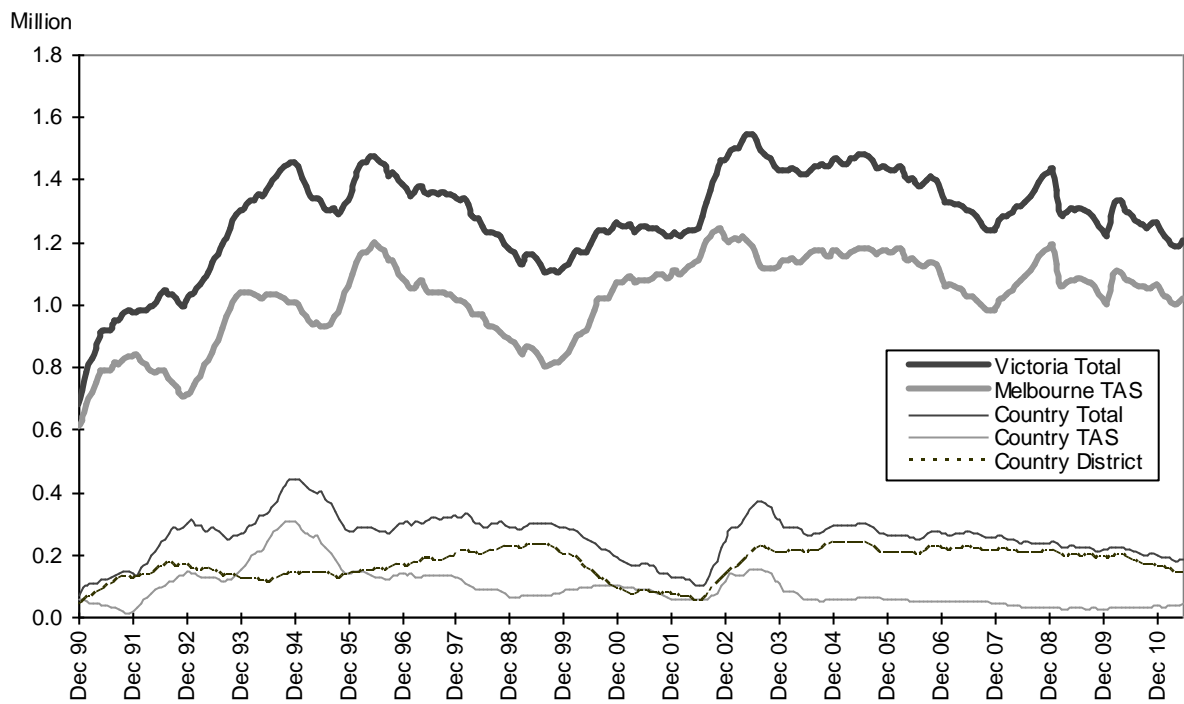
Graph 4b – Driver/rider fatalities by BAC



Graph 4c – Proportion of driver/rider fatalities with a BAC ge 0.05



Graph 5a – Booze-Bus RBTs



Graph 5b – RBT: Percentage positive readings

