



ROAD SAFETY STATISTICAL SUMMARY

October 2011



TRANSPORT
ACCIDENT
COMMISSION

60 Brougham Street
Geelong Vic 3220
PO Box 742
Geelong Vic 3220
Ausdoc DX 216079 Geelong

Telephone 1300 654 329
STD Toll Free 1800 332 556
Fax: 03 9656 9300
www.tac.vic.gov.au
ABN 22 033 947 623



Contents

Status Report	3
Road Toll (updated snapshot)	
Tables	4-7
Fatalities (rolling 12 month)	
Claims involving hospitalisation (rolling 12 month)	
Overview	
Sex	
Road user	
Location	
Age Group	
Altime	
Accident Type	
Police Service Area	
Victorian Road Deaths – monthly totals since 1951	8
Fatalities by Week (2006 to 2011)	9
Alcohol Related Deaths	10
The National Picture	11
Police Enforcement	12
Explanations and References	13-14
Alcohol times (“Altime”) explained	
Police Service Areas	
Useful internet sites	
Graphs (12 month moving totals)	15-19

Note about the data in this report

- All data provided in this report is the data most recently available at time of production. Typically, fatalities data is updated to the end of report month. Similarly, breath test data and safety camera data is updated to the end of the report month. A 6-month lag applies to TAC claims data, a 2-month lag applies to alcohol related fatalities data.

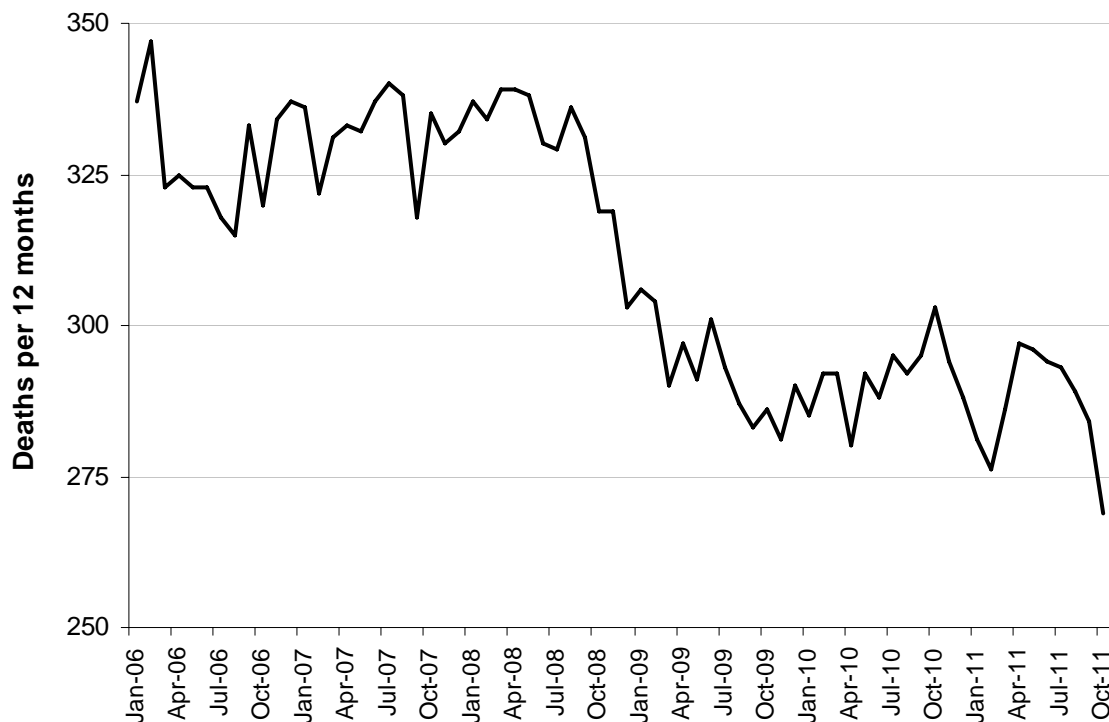
Status Report – Road Toll

Road Toll (year to date, accurate as at midnight 31 October 2011)

- The road toll in 2011 stands at 229, 7.7% less than at the same stage in 2010 (248).
- 12 people died in September 2011 and 21 in October 2011 on Victorian roads. This compares to 17 in September 2010 and 36 in October 2010.

Category	2011	2010	2009	2011 v 2010		2011 v 2009		5 Year Av
Casualties (Rolling 12 Month Total)								
Fatal (to October)	269	303	286	-34	(-11%)	-17	(-6%)	302
per 10,000 veh	0.64	0.74	0.71	-0.1	(-14%)	-0.07	(-10%)	0.78
per 100,000 pop	4.76	5.48	5.29	-0.72	(-13%)	-0.53	(-10%)	5.77
Accidents (Rolling 12 Month Total)								
Fatal (to October)	251	277	261	-26	(-9%)	-10	(-4%)	275
per 10,000 veh	0.59	0.67	0.65	-0.08	(-12%)	-0.06	(-9%)	0.70
per 100,000 pop	4.44	5.01	4.83	-0.57	(-11%)	-0.39	(-8%)	5.23

Victoria – Fatalities, rolling 12 months total



Note: Data is subject to revision as additional information about known accidents is received, and as new accident reports are received and processed.

Fatalities: 12 months to October

Category	2011	2010	2009	2011 v 2010		2011 v 2009		5 Year Av
Overview								
Fatalities	269	303	286	-34	(-11%)	-17	(-6%)	302
Accidents	251	277	261	-26	(-9%)	-10	(-4%)	275
Sex								
Male	194	230	195	-36	(-16%)	-1	(-1%)	218
Female	75	73	91	2	(3%)	-16	(-18%)	84
Roaduser								
Bicyclist	6	9	7	-3	(-33%)	-1	(-14%)	7
Driver	117	139	135	-22	(-16%)	-18	(-13%)	144
Motorcyclist	40	56	33	-16	(-29%)	7	(21%)	45
Passenger	59	61	53	-2	(-3%)	6	(11%)	60
Pedestrian	47	38	58	9	(24%)	-11	(-19%)	47
Location								
Melbourne	123	136	151	-13	(-10%)	-28	(-19%)	146
Rural Victoria	146	167	135	-21	(-13%)	11	(8%)	156
Agegroup								
0-4	6	6	5	0	(0%)	1	(20%)	5
5-15	10	8	9	2	(25%)	1	(11%)	9
16-17	9	6	8	3	(50%)	1	(13%)	9
18-20	28	32	42	-4	(-13%)	-14	(-33%)	34
21-25	36	35	26	1	(3%)	10	(38%)	37
26-29	16	27	17	-11	(-41%)	-1	(-6%)	23
30-39	29	43	41	-14	(-33%)	-12	(-29%)	42
40-49	37	39	42	-2	(-5%)	-5	(-12%)	39
50-59	29	35	35	-6	(-17%)	-6	(-17%)	36
60-69	23	27	21	-4	(-15%)	2	(10%)	24
70+	46	45	40	1	(2%)	6	(15%)	45
Alctime								
High (Melb)	69	77	73	-8	(-10%)	-4	(-5%)	78
High (Rural)	72	85	65	-13	(-15%)	7	(11%)	74
High (Vic)	141	162	138	-21	(-13%)	3	(2%)	152
Low (Melb)	54	59	78	-5	(-8%)	-24	(-31%)	68
Low (Rural)	74	82	70	-8	(-10%)	4	(6%)	82
Low (Vic)	128	141	148	-13	(-9%)	-20	(-14%)	150
Accident Type								
Intersection								
Adjacent direction	28	28	15	0	(0%)	13	(87%)	25
Opposing direction	7	7	4	0	(0%)	3	(75%)	8
Mid-block/other								
Head on	34	39	36	-5	(-13%)	-2	(-6%)	39
Same direction	12	22	17	-10	(-45%)	-5	(-29%)	17
Manoeuvre/o'taking	12	21	23	-9	(-43%)	-11	(-48%)	16
On path	4	10	5	-6	(-60%)	-1	(-20%)	7
Single vehicle	119	131	117	-12	(-9%)	2	(2%)	131
Other (incl peds)	53	45	69	8	(18%)	-16	(-23%)	59

Fatalities: 12 months to October

Category	2011	2010	2009	2011 v 2010		2011 v 2009		5 Year Av
Police Service Area (based on Local Government Area (see p.13))								
BALLARAT	8	8	6	0	(0%)	2	(33%)	7
BANYULE	3	1	2	2	(200%)	1	(50%)	2
BASS COAST	9	4	9	5	(125%)	0	(0%)	7
BAW BAW	10	8	6	2	(25%)	4	(67%)	8
BENALLA	4	6	5	-2	(-33%)	-1	(-20%)	5
BENDIGO	5	7	6	-2	(-29%)	-1	(-17%)	6
BOROONDARA	2	2	7	0	(0%)	-5	(-71%)	4
BRIMBANK	10	5	5	5	(100%)	5	(100%)	7
CAMPASPE	3	2	2	1	(50%)	1	(50%)	3
CARDINIA	6	7	4	-1	(-14%)	2	(50%)	6
CASEY	9	9	8	0	(0%)	1	(13%)	11
CENTRAL GOLDFIELDS	6	4	2	2	(50%)	4	(200%)	5
DAREBIN	3	2	5	1	(50%)	-2	(-40%)	4
EAST GIPPSLAND	8	9	12	-1	(-11%)	-4	(-33%)	10
FRANKSTON	6	3	6	3	(100%)	0	(0%)	6
GEELONG	11	12	8	-1	(-8%)	3	(38%)	8
GLEN EIRA	5	5	5	0	(0%)	0	(0%)	5
GREATER DANDENONG	3	6	8	-3	(-50%)	-5	(-63%)	6
HOBSONS BAY	0	1	2	-1	(-100%)	-2	(-100%)	3
HORSHAM	4	5	0	-1	(-20%)	4		3
HUME	3	8	9	-5	(-63%)	-6	(-67%)	7
KINGSTON	1	3	6	-2	(-67%)	-5	(-83%)	4
KNOX	1	3	6	-2	(-67%)	-5	(-83%)	4
LA TROBE	2	7	4	-5	(-71%)	-2	(-50%)	6
MACEDON RANGES	3	8	5	-5	(-63%)	-2	(-40%)	6
MANNINGHAM	1	5	5	-4	(-80%)	-4	(-80%)	3
MARIBYRNONG	1	1	1	0	(0%)	0	(0%)	2
MAROONDAH	3	2	0	1	(50%)	3		2
MELBOURNE	6	4	3	2	(50%)	3	(100%)	6
MELTON	8	5	8	3	(60%)	0	(0%)	6
MILDURA	4	5	2	-1	(-20%)	2	(100%)	5
MITCHELL	4	12	5	-8	(-67%)	-1	(-20%)	9
MONASH	5	3	8	2	(67%)	-3	(-38%)	6
MOONEE VALLEY	2	2	5	0	(0%)	-3	(-60%)	4
MOORABOOL	10	8	5	2	(25%)	5	(100%)	7
MORELAND	3	7	2	-4	(-57%)	1	(50%)	4
MORNINGTON PENINSULA	7	10	7	-3	(-30%)	0	(0%)	10
NILLUMBIK	2	1	2	1	(100%)	0	(0%)	1
NORTHERN GRAMPIANS	2	4	4	-2	(-50%)	-2	(-50%)	3
PORT PHILLIP	2	2	2	0	(0%)	0	(0%)	2
SHEPPARTON	4	4	8	0	(0%)	-4	(-50%)	6
SOUTHERN GRAMPIANS	1	4	9	-3	(-75%)	-8	(-89%)	5
STONNINGTON	1	0	1	1		0	(0%)	1
SURF COAST	11	10	7	1	(10%)	4	(57%)	9
SWAN HILL	5	7	3	-2	(-29%)	2	(67%)	8
WANGARATTA	14	10	14	4	(40%)	0	(0%)	12
WARRNAMBOOL	3	7	3	-4	(-57%)	0	(0%)	4
WELLINGTON	6	4	4	2	(50%)	2	(50%)	6
WHITEHORSE	5	7	3	-2	(-29%)	2	(67%)	4
WHITTLESEA	4	15	9	-11	(-73%)	-5	(-56%)	7
WODONGA	1	6	3	-5	(-83%)	-2	(-67%)	4
WYNDHAM	9	5	4	4	(80%)	5	(125%)	6
YARRA	2	4	4	-2	(-50%)	-2	(-50%)	3
YARRA RANGES	10	8	14	2	(25%)	-4	(-29%)	11

Claims involving hospital admission: 12 months to April (claim acceptance date)

Category	2011	2010	2009	2011 v 2010	2011 v 2009	5 Year Av
Overview						
Hospital admission claims	5,593	5,343	5,593	250 (5%)	0 (0%)	5,569
Sex						
Male	3,232	3,108	3,296	124 (4%)	-64 (-2%)	3,235
Female	2,360	2,232	2,297	128 (6%)	63 (3%)	2,333
Roaduser						
Bicyclist	337	309	297	28 (9%)	40 (13%)	308
Driver	2,533	2,363	2,370	170 (7%)	163 (7%)	2,460
Motorcyclist	950	989	951	-39 (-4%)	-1 (-0%)	939
Passenger	1,063	1,030	1,056	33 (3%)	7 (1%)	1,104
Pedestrian	647	571	600	76 (13%)	47 (8%)	589
Tram/train	27	16	19	11 (69%)	8 (42%)	15
Location						
Melbourne	3,788	3,461	3,442	327 (9%)	346 (10%)	3,673
Rural Victoria	1,778	1,787	1,522	-9 (-1%)	256 (17%)	1,718
Agegroup						
0-4	51	49	47	2 (4%)	4 (9%)	50
5-15	187	225	197	-38 (-17%)	-10 (-5%)	221
16-17	133	143	147	-10 (-7%)	-14 (-10%)	159
18-20	546	566	609	-20 (-4%)	-63 (-10%)	587
21-25	674	677	729	-3 (-0%)	-55 (-8%)	717
26-29	452	408	407	44 (11%)	45 (11%)	431
30-39	860	916	945	-56 (-6%)	-85 (-9%)	936
40-49	853	770	820	83 (11%)	33 (4%)	821
50-59	685	624	635	61 (10%)	50 (8%)	633
60-69	495	371	442	124 (33%)	53 (12%)	426
70+	657	594	615	63 (11%)	42 (7%)	588
Alctime						
High (Melb)	1,699	1,616	1,589	83 (5%)	110 (7%)	1,680
High (Rural)	799	823	645	-24 (-3%)	154 (24%)	751
High (Vic)	2,507	2,495	2,578	12 (0%)	-71 (-3%)	2,535
Low (Melb)	2,089	1,845	1,853	244 (13%)	236 (13%)	1,993
Low (Rural)	979	964	877	15 (2%)	102 (12%)	967
Low (Vic)	3,086	2,848	3,015	238 (8%)	71 (2%)	3,034
Accident Type						
Intersection						
Adjacent direction	826	816	842	10 (1%)	-16 (-2%)	844
Opposing direction	452	433	430	19 (4%)	22 (5%)	442
Mid-block/other						
Head on	351	285	339	66 (23%)	12 (4%)	322
Same direction	921	774	754	147 (19%)	167 (22%)	794
Manoeuvre/o'taking	346	315	316	31 (10%)	30 (9%)	314
On path	201	223	216	-22 (-10%)	-15 (-7%)	198
Single vehicle	1,604	1,655	1,596	-51 (-3%)	8 (1%)	1,655
Other (incl peds)	892	841	940	51 (6%)	-48 (-5%)	818

Note: excludes rejected claims and claims for interstate crashes

Claims involving hospital admission: 12 months to April (claim acceptance date)

Category	2011	2010	2009	2011 v 2010	2011 v 2009	5 Year Av
Police Service Area (based on Local Government Area (see p.13))						
BALLARAT	96	78	85	18 (23%)	11 (13%)	81
BANYULE	56	62	63	-6 (-10%)	-7 (-11%)	63
BASS COAST	71	76	61	-5 (-7%)	10 (16%)	82
BAW BAW	46	45	38	1 (2%)	8 (21%)	47
BENALLA	101	111	84	-10 (-9%)	17 (20%)	101
BENDIGO	99	71	82	28 (39%)	17 (21%)	79
BOROONDARA	145	142	120	3 (2%)	25 (21%)	138
BRIMBANK	122	106	153	16 (15%)	-31 (-20%)	139
CAMPASPE	34	45	22	-11 (-24%)	12 (55%)	39
CARDINIA	107	80	82	27 (34%)	25 (30%)	87
CASEY	227	242	179	-15 (-6%)	48 (27%)	228
CENTRAL GOLDFIELDS	6	9	12	-3 (-33%)	-6 (-50%)	12
DAREBIN	116	109	91	7 (6%)	25 (27%)	109
EAST GIPPSLAND	63	54	47	9 (17%)	16 (34%)	54
FRANKSTON	152	132	135	20 (15%)	17 (13%)	133
GEELONG	228	224	209	4 (2%)	19 (9%)	229
GLEN EIRA	175	154	146	21 (14%)	29 (20%)	160
GREATER DANDENONG	208	162	142	46 (28%)	66 (46%)	177
HOBSONS BAY	71	53	64	18 (34%)	7 (11%)	67
HORSHAM	37	30	12	7 (23%)	25 (208%)	31
HUME	146	149	142	-3 (-2%)	4 (3%)	155
KINGSTON	126	145	124	-19 (-13%)	2 (2%)	133
KNOX	134	106	135	28 (26%)	-1 (-1%)	128
LA TROBE	76	51	51	25 (49%)	25 (49%)	60
MACEDON RANGES	91	93	62	-2 (-2%)	29 (47%)	78
MANNINGHAM	64	64	62	0 (0%)	2 (3%)	71
MARIBYRNONG	62	74	75	-12 (-16%)	-13 (-17%)	71
MAROONDAH	70	69	69	1 (1%)	1 (1%)	69
MELBOURNE	229	194	171	35 (18%)	58 (34%)	190
MELTON	67	64	52	3 (5%)	15 (29%)	63
MILDURA	34	21	34	13 (62%)	0 (0%)	32
MITCHELL	79	77	74	2 (3%)	5 (7%)	75
MONASH	153	159	159	-6 (-4%)	-6 (-4%)	166
MOONEE VALLEY	83	85	109	-2 (-2%)	-26 (-24%)	103
MOORABOOL	80	113	104	-33 (-29%)	-24 (-23%)	92
MORELAND	139	118	124	21 (18%)	15 (12%)	134
MORNINGTON PENINSULA	187	134	173	53 (40%)	14 (8%)	168
NILLUMBIK	37	28	35	9 (32%)	2 (6%)	33
NORTHERN GRAMPIANS	30	28	34	2 (7%)	-4 (-12%)	36
PORT PHILLIP	100	101	118	-1 (-1%)	-18 (-15%)	119
SHEPPARTON	62	69	78	-7 (-10%)	-16 (-21%)	80
SOUTHERN GRAMPIANS	48	39	28	9 (23%)	20 (71%)	39
STONNINGTON	140	102	101	38 (37%)	39 (39%)	115
SURF COAST	81	75	95	6 (8%)	-14 (-15%)	80
SWAN HILL	22	40	32	-18 (-45%)	-10 (-31%)	34
WANGARATTA	102	126	85	-24 (-19%)	17 (20%)	106
WARRNAMBOOL	98	102	52	-4 (-4%)	46 (88%)	80
WELLINGTON	72	88	58	-16 (-18%)	14 (24%)	64
WHITEHORSE	146	107	116	39 (36%)	30 (26%)	132
WHITTLESEA	123	118	113	5 (4%)	10 (9%)	116
WODONGA	62	60	50	2 (3%)	12 (24%)	60
WYNDHAM	112	102	110	10 (10%)	2 (2%)	115
YARRA	104	106	89	-2 (-2%)	15 (17%)	98
YARRA RANGES	187	194	190	-7 (-4%)	-3 (-2%)	196

Victorian Road Deaths: monthly totals since 1951

Year	Jan	Feb	Mar	Apr	May	Jun	Jul	Aug	Sep	Oct	Nov	Dec	Totals
1951							61	59	52	38	29	41	
1952	45	40	54	61	54	69	67	55	44	44	31	20	584
1953	23	28	54	58	49	42	50	37	44	27	36	32	480
1954	44	42	28	60	55	36	63	33	25	52	30	41	509
1955	44	36	45	55	48	56	64	44	44	32	40	40	548
1956	34	48	51	67	53	65	71	47	39	39	44	48	606
1957	50	41	46	58	52	54	57	53	51	46	32	49	589
1958	50	38	42	58	54	41	54	53	57	40	57	52	596
1959	50	57	61	50	75	55	42	48	52	55	63	63	671
1960	49	53	57	76	70	70	67	62	61	77	52	66	760
1961	63	57	68	74	58	68	78	82	59	62	60	65	794
1962	65	41	76	78	72	80	70	77	62	53	64	70	808
1963	67	56	65	85	66	68	77	55	55	58	61	67	780
1964	73	71	78	71	83	89	80	89	67	66	62	75	904
1965	63	64	86	88	80	87	79	69	81	77	68	87	929
1966	75	59	75	103	74	86	87	80	75	66	90	85	955
1967	61	79	91	97	81	71	59	67	70	68	60	83	887
1968	70	78	86	78	73	76	73	77	72	80	81	105	949
1969	79	68	79	87	86	77	87	83	87	83	94	101	1,011
1970	85	84	106	80	87	88	110	106	78	95	68	74	1,061
1971	83	75	77	68	76	86	85	72	78	73	74	76	923
1972	61	62	75	82	75	71	98	85	83	62	80	81	915
1973	75	75	95	85	64	66	61	85	89	88	66	86	935
1974	56	62	81	60	70	73	67	62	53	70	80	72	806
1975	67	65	87	73	97	94	57	75	69	66	71	89	910
1976	79	78	88	78	69	79	60	70	82	78	77	100	938
1977	65	71	89	79	65	79	70	91	68	74	96	107	954
1978	75	54	95	63	64	69	68	77	65	84	83	72	869
1979	63	60	86	75	45	64	66	75	69	79	72	93	847
1980	48	55	66	59	47	56	60	53	45	58	61	49	657
1981	69	60	58	61	74	65	61	63	68	71	59	57	766
1982	55	53	59	59	67	45	47	71	53	69	65	66	709
1983	42	59	53	63	62	61	65	51	59	43	54	52	664
1984	65	48	58	50	56	48	46	50	71	53	55	58	658
1985	56	47	50	65	75	50	51	50	58	61	56	64	683
1986	56	50	70	69	59	53	42	54	54	52	59	51	669
1987	62	43	57	52	63	59	62	49	62	61	55	80	705
1988	49	58	69	54	79	50	54	52	64	59	43	70	701
1989	76	65	80	59	67	73	52	65	82	50	41	66	776
1990	48	44	55	39	56	64	41	34	48	35	40	44	548
1991	45	39	70	30	34	29	44	47	41	36	35	53	503
1992	34	33	34	47	33	29	23	27	28	38	30	40	396
1993	27	40	37	39	44	33	33	27	34	39	43	40	436
1994	36	31	44	35	27	33	29	37	17	27	32	30	378
1995	38	35	26	33	34	41	27	34	34	32	38	46	418
1996	40	47	35	38	28	29	30	35	49	24	33	30	418
1997	36	25	30	30	40	22	39	26	26	29	39	35	377
1998	29	29	32	36	31	22	40	19	37	36	49	30	390
1999	32	31	35	35	34	24	35	26	28	38	29	37	384
2000	32	26	46	32	39	32	33	29	36	29	44	29	407
2001	44	30	31	32	31	41	34	37	35	51	41	37	444
2002	32	31	45	31	45	32	27	25	31	30	31	37	397
2003	21	41	36	28	31	28	20	23	23	24	24	31	330
2004	32	22	30	30	46	28	27	26	22	28	25	27	343
2005	33	27	47	21	29	23	30	25	25	33	17	36	346
2006	24	37	23	23	27	23	25	22	43	20	31	39	337
2007	23	23	32	25	26	28	28	20	23	37	26	41	332
2008	28	20	37	25	25	20	27	27	18	25	26	25	303
2009	31	18	23	32	19	30	19	21	14	28	21	34	290
2010	26	25	23	20	31	26	26	18	17	36	12	28	288
2011	19	20	33	31	30	24	25	14	12	21			229
Ave	50	48	57	56	55	53	53	51	51	51	51	57	637
Max	85	84	106	103	97	94	110	106	89	95	96	107	1,061
Min	19	18	23	20	19	20	19	14	12	20	12	20	288

Fatalities by Week (2006 to 2011)

Week Ending	2006	2007	2008	2009	2010	2011	Cumulative 2011	% Change 2011-2010	12 Month Moving Total
2-Jan	3	3	1	3	1	2	2	100%	289
9-Jan	3	2	8	11	6	1	3	-57%	284
16-Jan	4	7	5	6	1	7	10	25%	290
23-Jan	9	5	4	2	9	4	14	-18%	285
30-Jan	5	5	8	8	6	4	18	-22%	283
6-Feb	4	7	5	1	9	8	26	-19%	282
13-Feb	6	4	4	10	5	3	29	-22%	280
20-Feb	18	10	4	3	8	5	34	-24%	277
27-Feb	8	3	8	5	4	4	38	-22%	277
6-Mar	3	9	8	2	6	8	46	-16%	279
13-Mar	6	9	5	6	5	6	52	-13%	280
20-Mar	3	3	13	3	4	8	60	-6%	284
27-Mar	8	8	7	7	8	8	68	-6%	284
3-Apr	5	4	10	8	5	5	73	-5%	284
10-Apr	4	11	3	5	4	12	85	5%	292
17-Apr	3	4	6	8	6	5	90	3%	291
24-Apr	2	3	6	10	4	6	96	5%	293
1-May	13	7	5	6	4	7	103	8%	296
8-May	11	3	7	7	3	5	108	10%	298
15-May	3	6	4	4	9	7	115	7%	296
22-May	4	8	8	1	6	11	126	12%	301
29-May	8	6	6	3	12	3	129	3%	292
5-Jun	6	15	2	7	2	5	134	6%	295
12-Jun	4	3	6	6	7	9	143	7%	297
19-Jun	7	4	4	8	8	3	146	3%	292
26-Jun	6	7	7	6	5	6	152	3%	293
3-Jul	1	2	5	7	8	5	157	1%	290
10-Jul	7	9	10	9	4	10	167	5%	296
17-Jul	7	7	2	2	3	6	173	7%	299
24-Jul	7	6	3	5	5	7	180	8%	301
31-Jul	4	5	8	3	10	2	182	3%	293
7-Aug	7	2	8	3	7	4	186	1%	290
14-Aug	4	2	6	11	3	6	192	3%	293
21-Aug	5	4	3	4	5	1	193	1%	289
28-Aug	5	11	7	1	2	1	194	0%	288
4-Sep	2	3	5	4	3	3	197	0%	288
11-Sep	5	7	3	1	4	3	200	0%	287
18-Sep	13	4	6	7	1	3	203	0%	289
25-Sep	12	8	6	2	6	1	204	-2%	284
2-Oct	12	5	6	2	4	5	209	-1%	285
9-Oct	9	12	8	2	12	6	215	-4%	279
16-Oct	5	6	4	8	7	2	217	-6%	274
23-Oct	4	8	4	9	8	3	220	-8%	269
30-Oct	1	6	4	8	6	7	227	-7%	270
6-Nov	10	6	4	4	5	6	233	-7%	271
13-Nov	2	7	7	6	0	12	245	-2%	283
20-Nov	9	4	10	6	3	7	252	0%	287
27-Nov	8	7	3	4	3	3	255	0%	287
4-Dec	16	8	4	5	7				
11-Dec	4	16	9	5	6				
18-Dec	6	5	3	11	6				
25-Dec	11	8	9	10	9				
31-Dec	5	8	2	5	4				
Total	337	332	303	290	288	255			

Alcohol Related Deaths

NOTE: UPDATES TO THIS DATA WERE NOT AVAILABLE AT TIME OF REPORT

BAC Fatalities (12 months to April 2010)

- 24% of killed and tested drivers and riders had a BAC at 0.05 g/100ml or over (41 of 172) compared to 25% over the previous 12 month period (43 of 169).
- In Melbourne, 21 drivers/riders killed and tested were at or over 0.05, with 38% of these having a BAC in excess of 0.15 g/100ml. Across rural Victoria, 20 drivers/riders killed and tested were at or over 0.05, with 65% of these having a BAC over 0.15.
- Of the 41 drivers and riders killed and tested at or over 0.05, 15% (6) were aged under 21, 39% (16) were aged 21-29, 27% (11) were aged 30-39 and 20% (8) were aged 40 years and over. In the previous year (43 killed) the corresponding figures were 19% (8), 28% (12), 19% (8) and 35% (15), respectively.

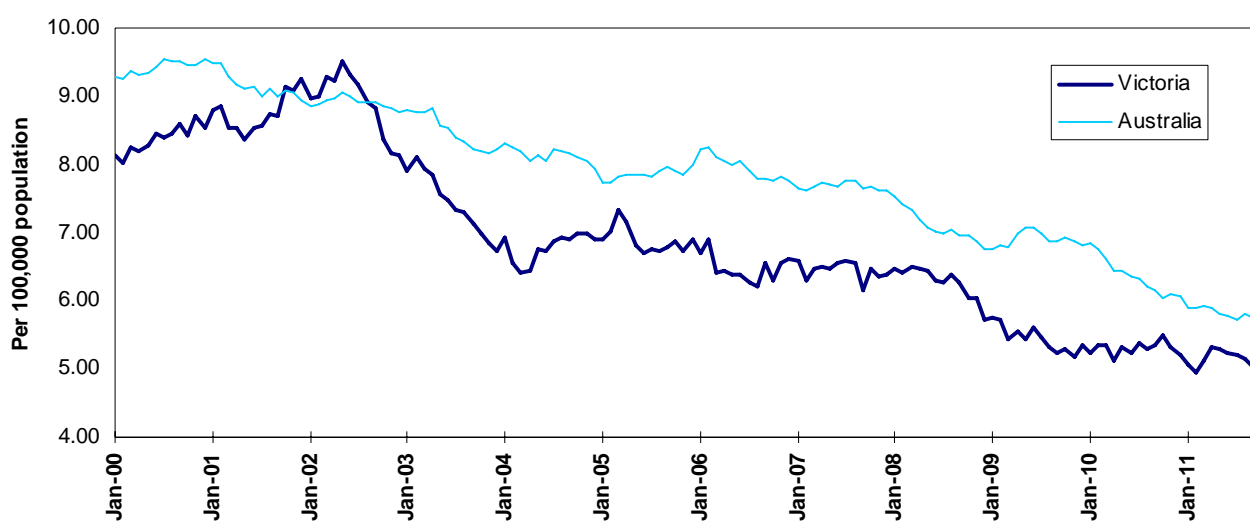
Category	2010	2009	2008	2010 v 2009	2010 v 2008	5 Year Av
Melbourne Drivers and Riders						
<0.05	55	63	63	-8	(-13%)	62
[a] at 0.05 & above	21	17	25	4	(24%)	21
% at 0.05 & above	(28%)	(21%)	(28%)			(25%)
[b] >0.15	8	10	12	-2	(-20%)	9
%>0.15	(11%)	(13%)	(14%)			(11%)
[b] as a % of [a]	(38%)	(59%)	(48%)			(43%)
BAC Unknown	5	3	1	2	(67%)	3
Country Drivers and Riders						
<0.05	76	63	90	13	(21%)	78
[a] at 0.05 & above	20	26	32	-6	(-23%)	26
% at 0.05 & above	(21%)	(29%)	(26%)			(25%)
[b] >0.15	13	17	20	-4	(-24%)	17
%>0.15	(14%)	(19%)	(16%)			(16%)
[b] as a % of [a]	(65%)	(65%)	(63%)			(64%)
BAC Unknown	7	2	1	5	(250%)	5
Victorian Total Drivers and Riders						
<0.05	131	126	153	5	(4%)	140
[a] at 0.05 & above	41	43	57	-2	(-5%)	47
% at 0.05 & above	(24%)	(25%)	(27%)			(25%)
[b] >0.15	21	27	32	-6	(-22%)	26
%>0.15	(12%)	(16%)	(15%)			(14%)
[b] as a % of [a]	(51%)	(63%)	(56%)			(54%)
BAC Unknown	12	5	2	7	(140%)	7
Victorian Total Pedestrians						
<0.05	32	35	38	-3	(-9%)	33
[a] at 0.05 & above	8	21	9	-13	(-62%)	14
% at 0.05 & above	(20%)	(38%)	(19%)			(30%)
[b] >0.15	3	10	8	-7	(-70%)	9
%>0.15	(8%)	(18%)	(17%)			(19%)
[b] as a % of [a]	(38%)	(48%)	(89%)			(62%)
BAC Unknown	6	4	2	2	(50%)	4

The National Picture

State	Killed (12 months to October)					2011 v 2010	
	2011	2010	2009	2008			
NSW	365	408	454	381	-43	(-11%)	
VIC	269	303	286	319	-34	(-11%)	
QLD	261	240	343	328	21	(9%)	
SA	110	115	121	107	-5	(-4%)	
WA	196	184	194	212	12	(7%)	
TAS	27	33	63	38	-6	(-18%)	
NT	42	45	36	80	-3	(-7%)	
ACT	7	18	13	15	-11	(-61%)	
AUST TOTAL	1,277	1,346	1,510	1,480	-69	(-5%)	
AUST minus VIC	1,008	1,043	1,224	1,161	-35	(-3%)	

State	Deaths per 10,000 registered vehicles (12 months to October)			Deaths per 100,000 population (12 months to October)		
	2011	2010	2009	2011	2010	2009
NSW	0.76	0.87	0.99	4.96	5.65	6.41
VIC	0.64	0.74	0.71	4.76	5.48	5.29
QLD	0.76	0.71	1.04	5.66	5.34	7.82
SA	0.87	0.93	1.00	6.61	7.01	7.47
WA	1.02	0.98	1.06	8.35	8.05	8.72
TAS	0.64	0.80	1.57	5.28	6.51	12.55
NT	3.05	3.33	2.79	17.97	19.66	16.07
ACT	0.27	0.71	0.53	1.92	5.03	3.71
AUST TOTAL	0.78	0.84	0.96	5.62	6.05	6.93
AUST minus VIC	0.82	0.87	1.05	5.90	6.23	7.47

Victoria v Australia – 12 Month Moving Fatality Rate



Booze-Bus Random Breath Testing*

12 months to June 2011 (monthly totals)

	2010						2011					
	Jul	Aug	Sep	Oct	Nov	Dec	Jan	Feb	Mar	Apr	May	Jun
Melbourne	86,195	79,603	91,365	78,241	81,341	97,729	78,392	67,733	80,249	85,872	91,495	97,118
Country	13,420	9,459	14,650	15,957	19,375	19,112	20,355	16,658	11,753	13,440	15,127	16,814
Vic Total	99,615	89,062	106,015	94,198	100,716	116,841	98,747	84,391	92,002	99,312	106,622	113,932

12 months to June 2011 vs previous 12 months

	2011	2010	2009	2011 v 2010	2011 v 2009
Melbourne	1,015,333	1,075,217	1,078,484	-59,884 (-6%)	-63,151 (-6%)
Country	186,120	217,077	224,767	-30,957 (-14%)	-38,647 (-17%)
Vic Total	1,201,453	1,292,294	1,303,251	-90,841 (-7%)	-101,798 (-8%)

*At the time of reporting, the most recent available data was June 2011.

Mobile Safety Camera Data

Speed Infringements Issued from Mobile Cameras (monthly totals)

Monthly Average = 44,739

2010	2011											
	Nov	Dec	Jan	Feb	Mar	Apr	May	Jun	Jul	Aug	Sep	Oct
47,500	44,921	51,861	41,104	52,252	40,271	53,774	50,556	48,508	47,459	45,614	13,049	

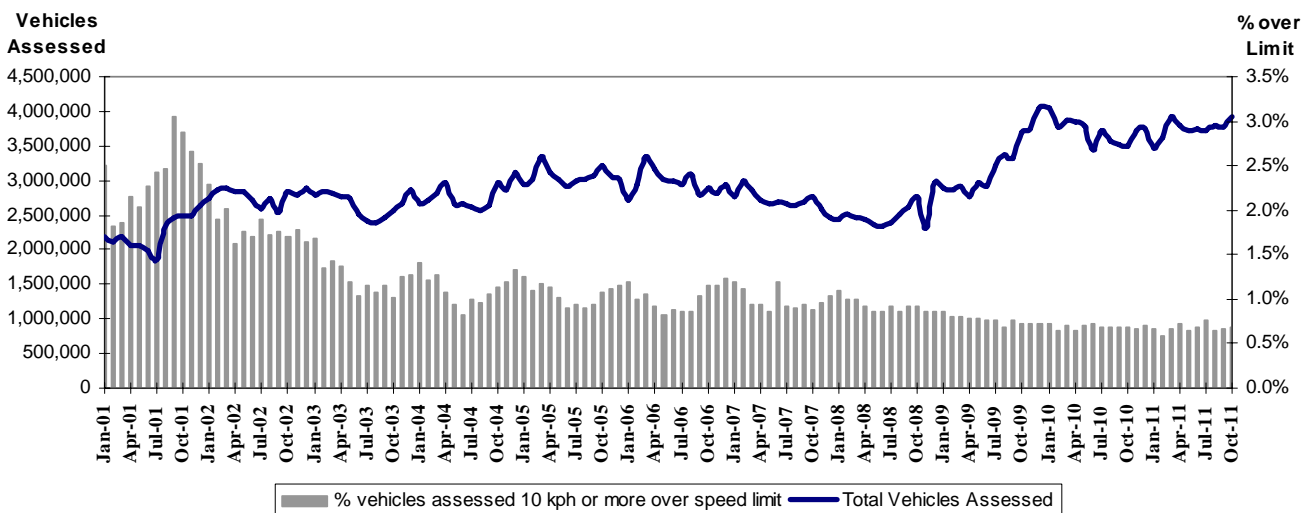
Excessive Speed Infringements Issued from Mobile Cameras (monthly totals)

Monthly Average = 413

2010	2011											
	Nov	Dec	Jan	Feb	Mar	Apr	May	Jun	Jul	Aug	Sep	Oct
330	363	352	398	466	406	525	587	460	467	421	176	

Note: An ESI is defined as 25km/h over the speed limit except in a 110km/h zone where it is 20km/h over the limit.

Mobile Safety Cameras – Vehicles assessed and percentage of vehicles assessed 10km/h or more over speed limit per month



Explanations and References

Hi-Alcetime is those times of the day and week (*shaded in the table below*) when casualty crashes are ten times more likely to involve alcohol than casualty crashes at other (Lo-Alcetime) times.

	12am - 6am	6am - 8am	8am - 10am	10am - 2pm	2pm - 4pm	4pm - 6pm	6pm - 12pm
Monday							
Tuesday							
Wednesday							
Thursday							
Friday							
Saturday							
Sunday							

Police Service Areas align with Local Government Areas. Most Police Service Areas are equivalent to a single Local Government Area, while the remainder comprise two or three Local Government Areas.

Police Service Area	Local Government Area(s)	Police Service Area	Local Government Area(s)
BALLARAT	BALLARAT, PYRENEES	MAROONDAH	MAROONDAH
BANYULE	BANYULE	MELBOURNE	MELBOURNE
BASS COAST	BASS COAST, SOUTH GIPPSLAND	MELTON	MELTON
BAW BAW	BAWBAW	MILDURA	MILDURA
BENALLA	BENALLA, MANSFIELD, MURRINDINDI	MITCHELL	MITCHELL, STRATHBOGIE
BENDIGO	GREATER BENDIGO	MONASH	MONASH
BOROONDARA	BOROONDARA	MOONEE VALLEY	MOONEE VALLEY
BRIMBANK	BRIMBANK	MOORABOOL	GOLDEN PLAINS, HEPBURN, MOORABOOL
CAMPASPE	CAMPASPE	MORELAND	MORELAND
CARDINIA	CARDINIA	MORNINGTON PENINSULA	MORNINGTON PENINSULA
CASEY	CASEY	NILLUMBIK	NILLUMBIK
CENTRAL GOLDFIELDS	CENTRAL GOLDFIELDS, LODDON	NORTHERN GRAMPIANS	ARARAT, NORTHERN GRAMPIANS, YARRIAMIACK
GREATER DANDENONG	GREATER DANDENONG	PORT PHILLIP	PORT PHILLIP
DAREBIN	DAREBIN	SHEPPARTON	GREATER SHEPPARTON
EAST GIPPSLAND	EAST GIPPSLAND	SOUTHERN GRAMPIANS	GLENELG, SOUTHERN GRAMPIANS
FRANKSTON	FRANKSTON	STONNINGTON	STONNINGTON
GEELONG	GREATER GEELONG, QUEENSCLIFF	SURFCOAST	SURFCOAST, COLAC OTWAY
GLENEIRA	GLENEIRA, BAYSIDE	SWANHILL	BULOKE, GANNAWARRA, SWAN HILL
HOBSONS BAY	HOBSONSBAY	WANGARATTA	ALPINE, WANGARATTA
HORSHAM	HINDMARSH, HORSHAM, WESTWIMMERA	WARRNAMBOOL	CORANGAMITE, MOYNE, WARRNAMBOOL
HUME	HUME	WELLINGTON	WELLINGTON
KINGSTON	KINGSTON	WHITEHORSE	WHITEHORSE
KNOX	KNOX	WHITTLESEA	WHITTLESEA
LATROBE	LATROBE	WODONGA	INDIGO, TOWONG, WODONGA
MACEDON RANGES	MOUNT ALEXANDER, MACEDON RANGES	WYNDHAM	WYNDHAM
MANNINGHAM	MANNINGHAM	YARRA	YARRA
MARIBYRNONG	MARIBYRNONG	YARRA RANGES	YARRA RANGES

Useful Internet Sites

TAC Sites

- TAC Safety (Road Safety) www.tacsafety.com.au
- TAC How safe is your car www.howsafeisyourcar.com.au
- TAC Learners Log www.learnerslog.com.au
- TAC Motorcycle Safety Website www.spokes.com.au
- TAC Corporate site www.tac.vic.gov.au

Victorian Sites:

- arrive alive www.vicroads.vic.gov.au
- VicRoads www.vicroads.vic.gov.au
- Victorian Police www.police.vic.gov.au
- Parliamentary Road Safety Committee www.parliament.vic.gov.au/rsc/
- ARRB Transport Research www.arrb.com.au
- RACV www.racv.com.au
- Monash University Accident Research Centre www.monash.edu.au/muarc
- Roadsafe www.roadsafe.org.au

National and Interstate Sites:

- Australian Transport Safety Bureau www.atsb.gov.au
- Roads and Traffic Authority (NSW) www.rta.nsw.gov.au
- Queensland Transport - Road Safety transport.qld.gov.au/Home/Safety/Road
- Department of Transport (SA) www.transport.sa.gov.au/index.htm
- Main Roads Western Australia - Road Safety www.mrwa.wa.gov.au

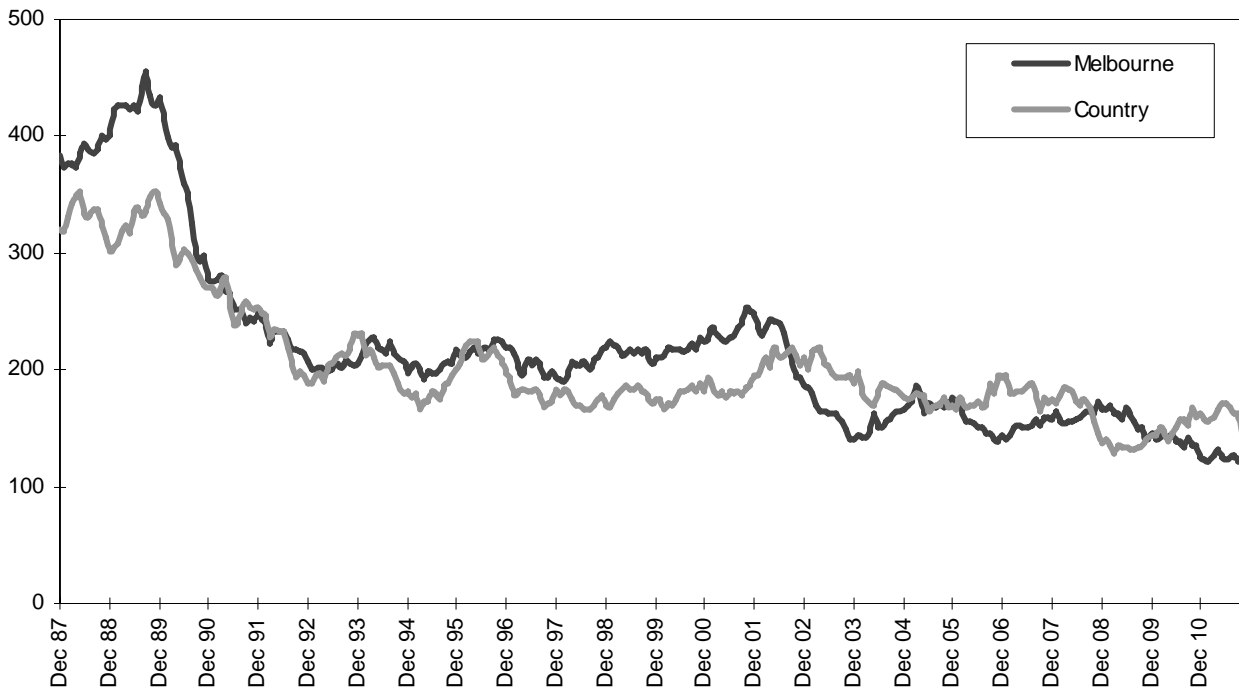
International Sites:

- National Highway Traffic Safety Admin (USA) www.nhtsa.dot.gov
- Swedish Road and Transport Institute (VTI) www.vti.se
- SWOV Institute for Road Safety Research www.swov.nl

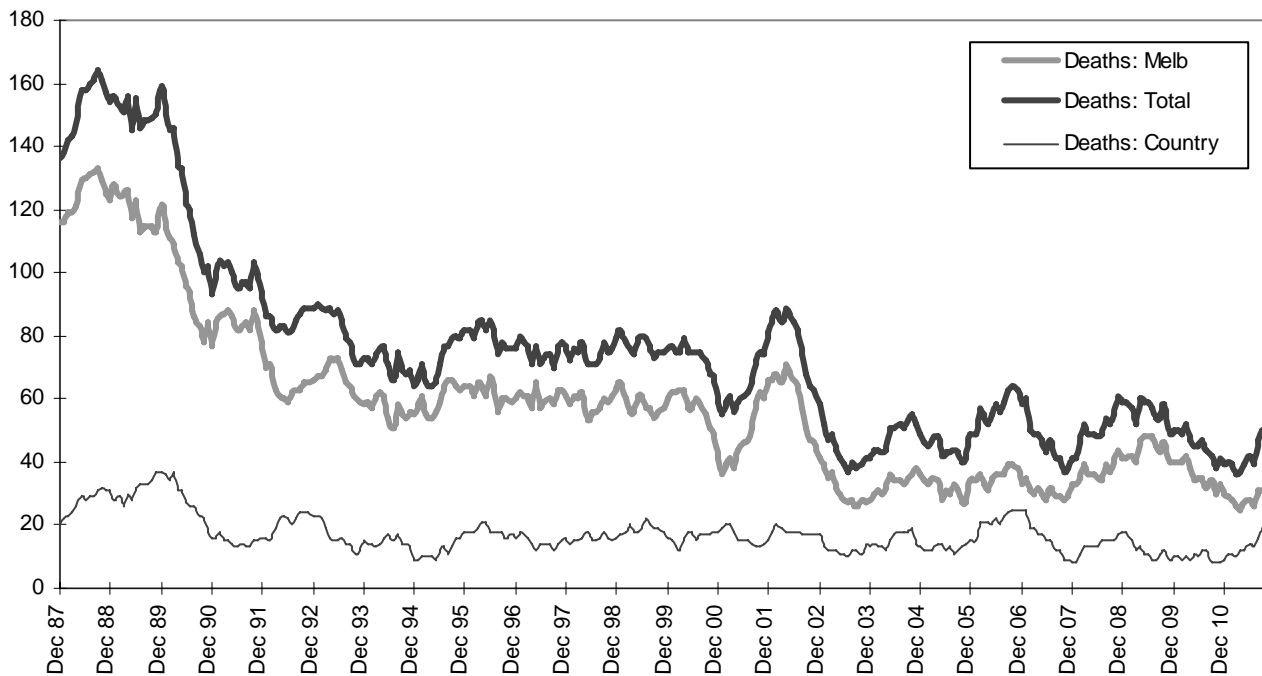
Related Sites:

- Australian Drug Foundation www.adf.org.au
- Bicycle Victoria www.bv.com.au

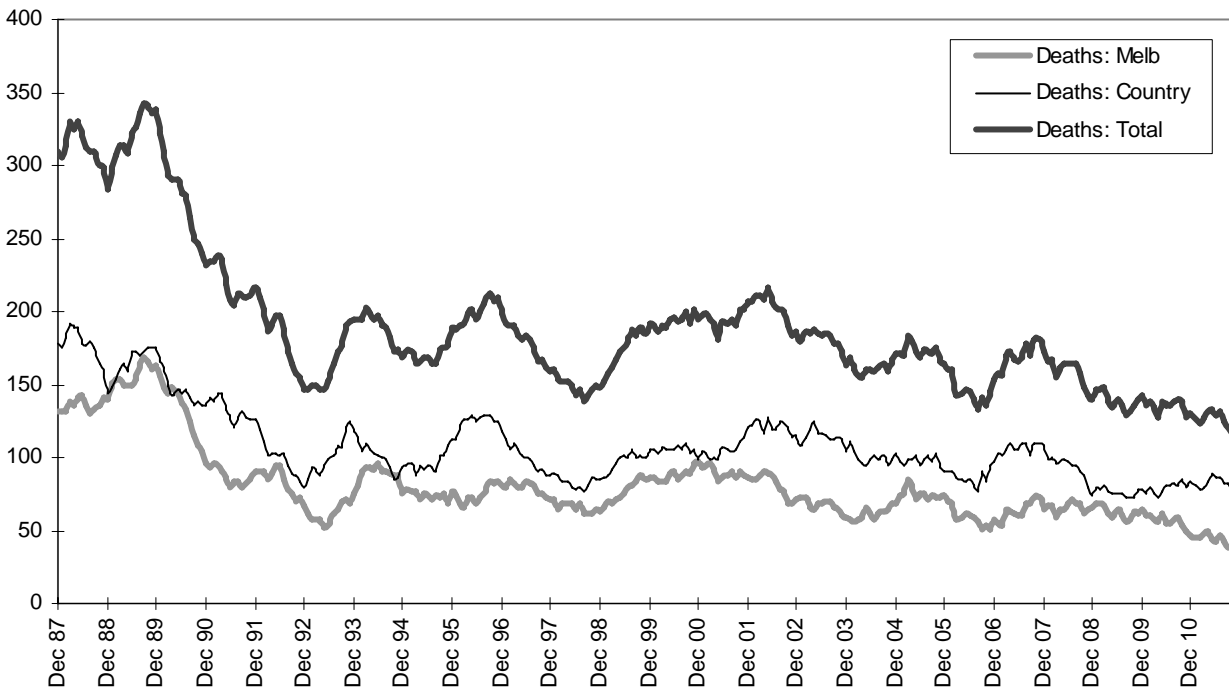
Graph 1 – Melbourne/country fatalities



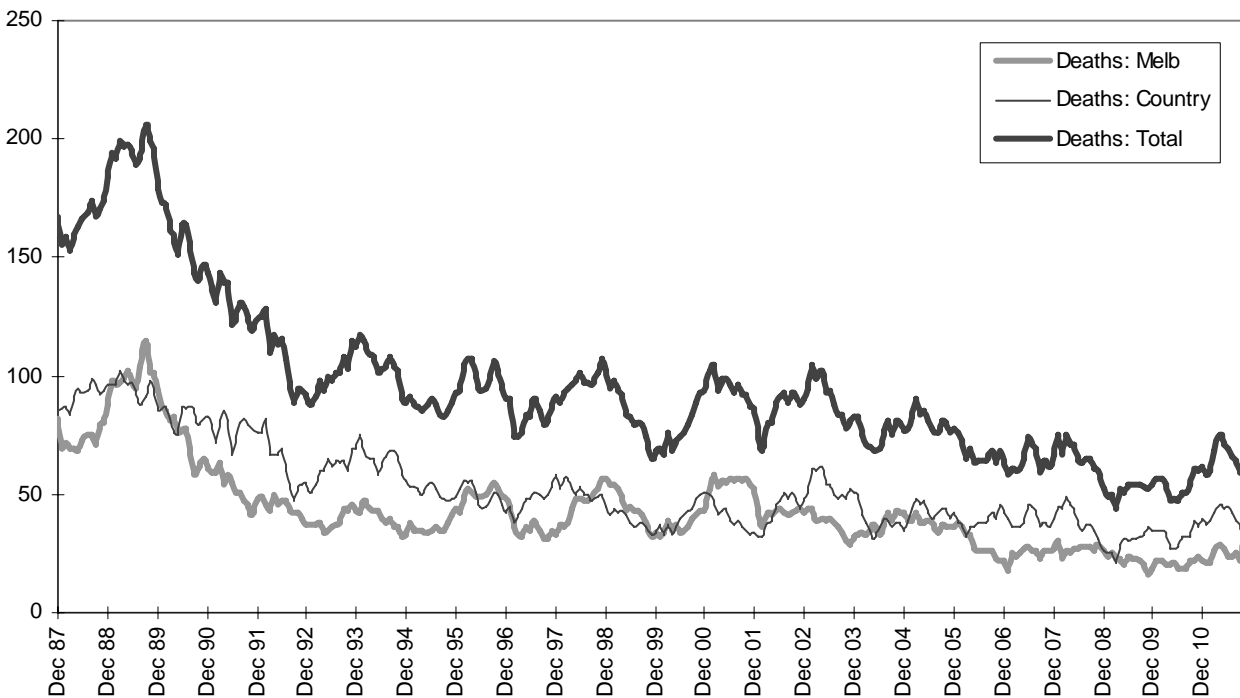
Graph 2a – Pedestrian fatalities (Melbourne/country)



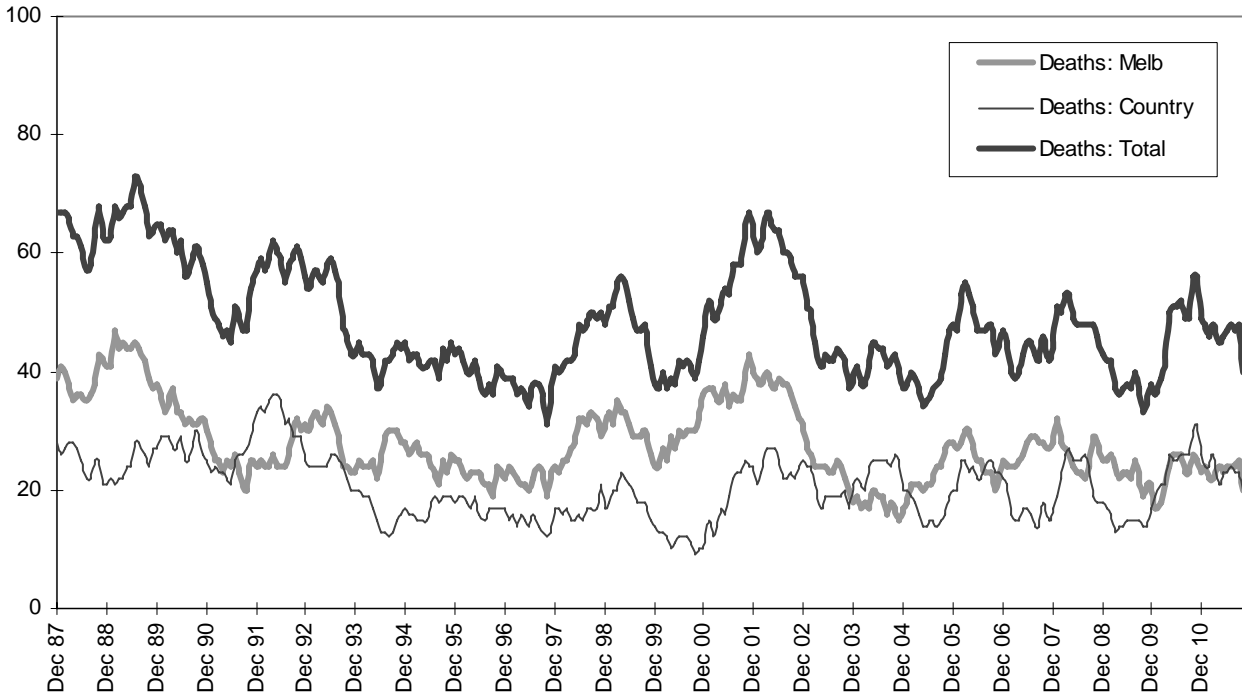
Graph 2b – Driver fatalities (Melbourne/country)



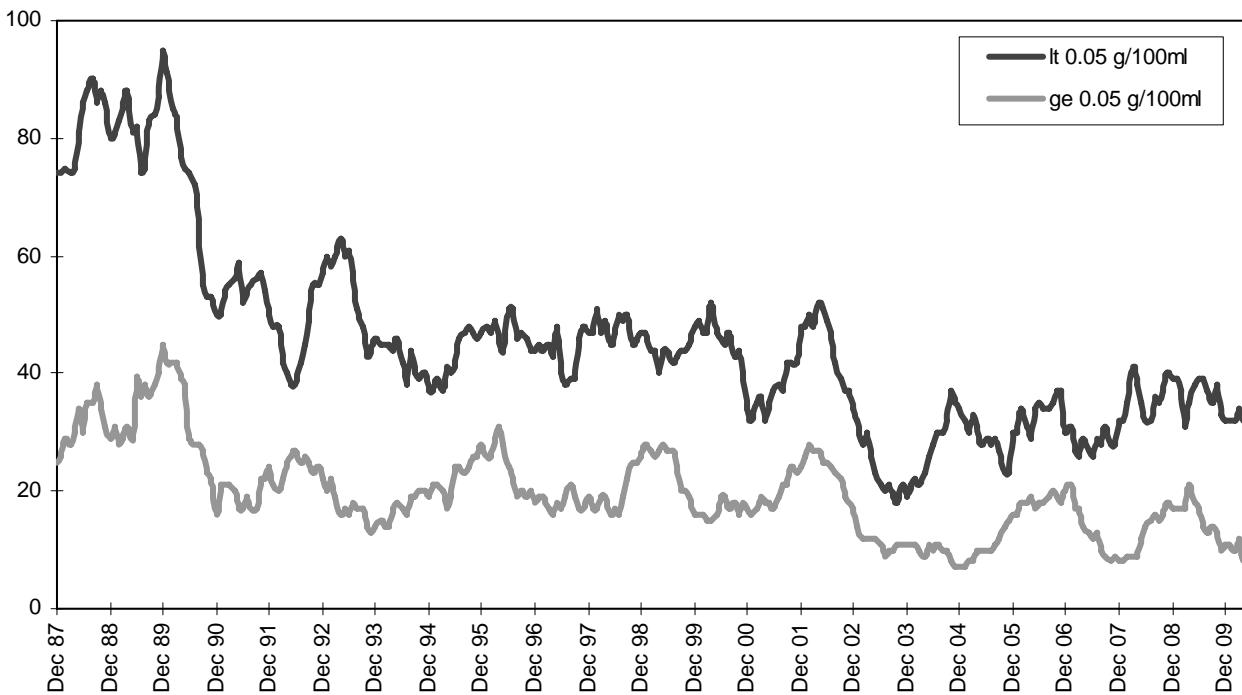
Graph 2c – Passenger fatalities (Melbourne/country)



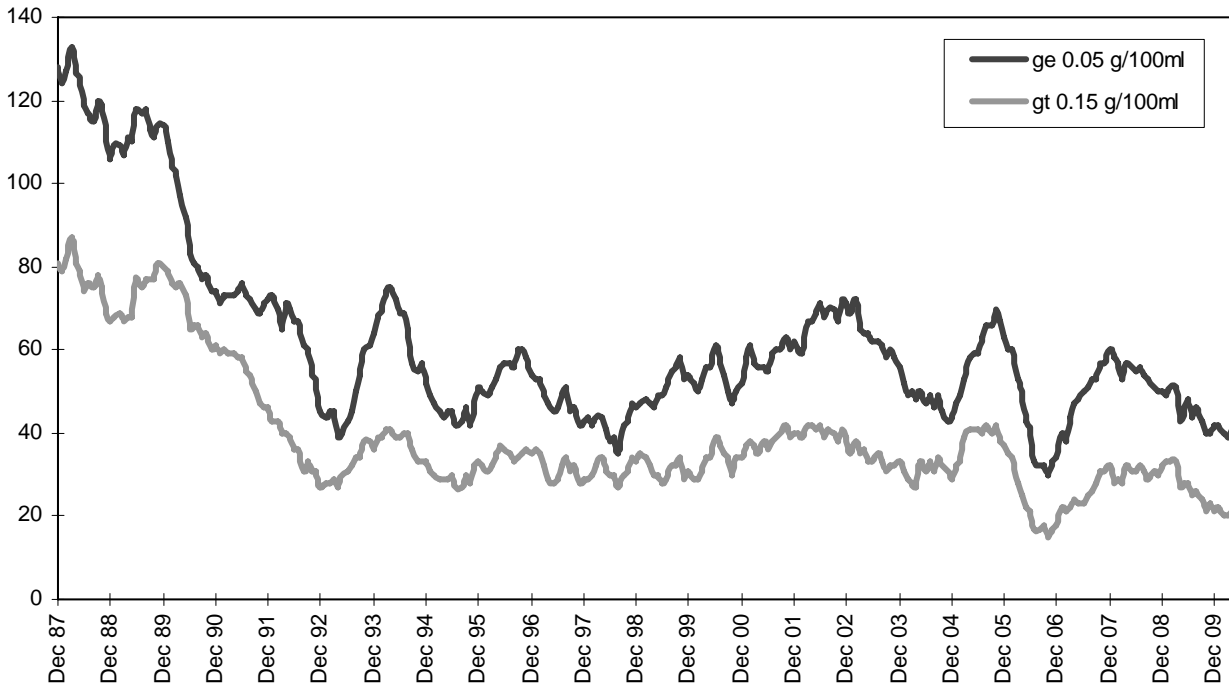
Graph 2d –Motorcyclist fatalities (Melbourne/country)



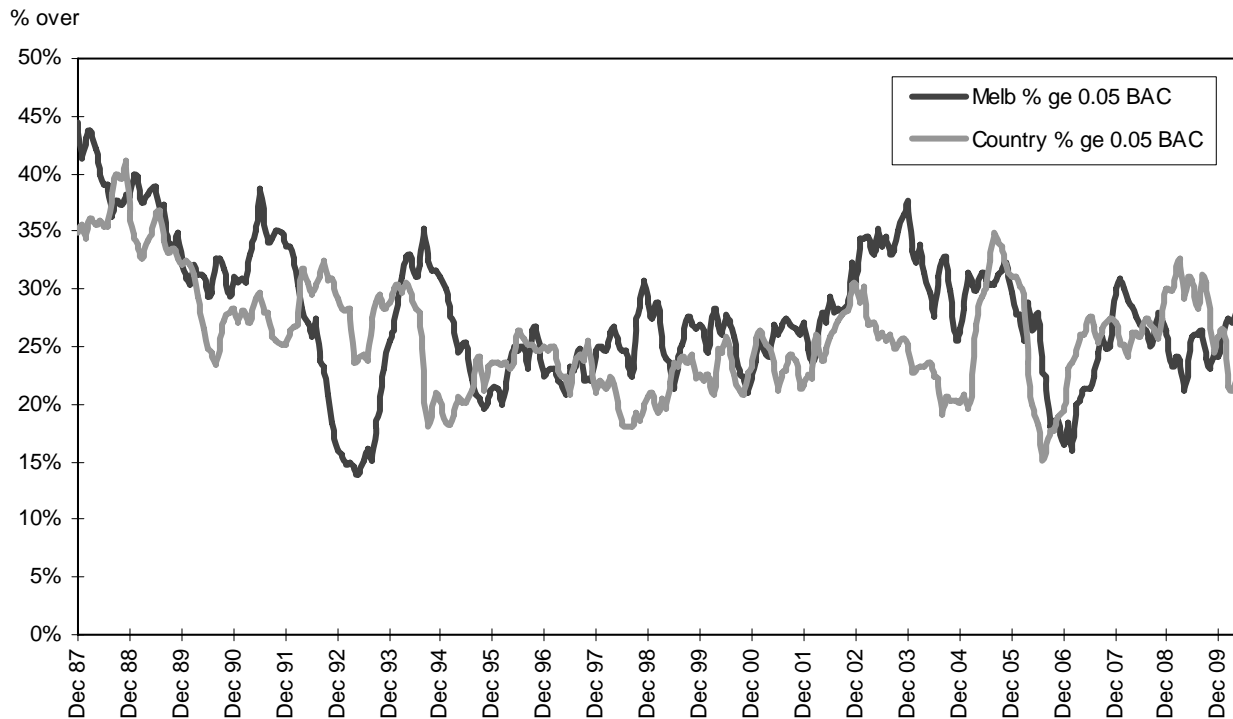
Graph 3a – Pedestrian deaths by BAC



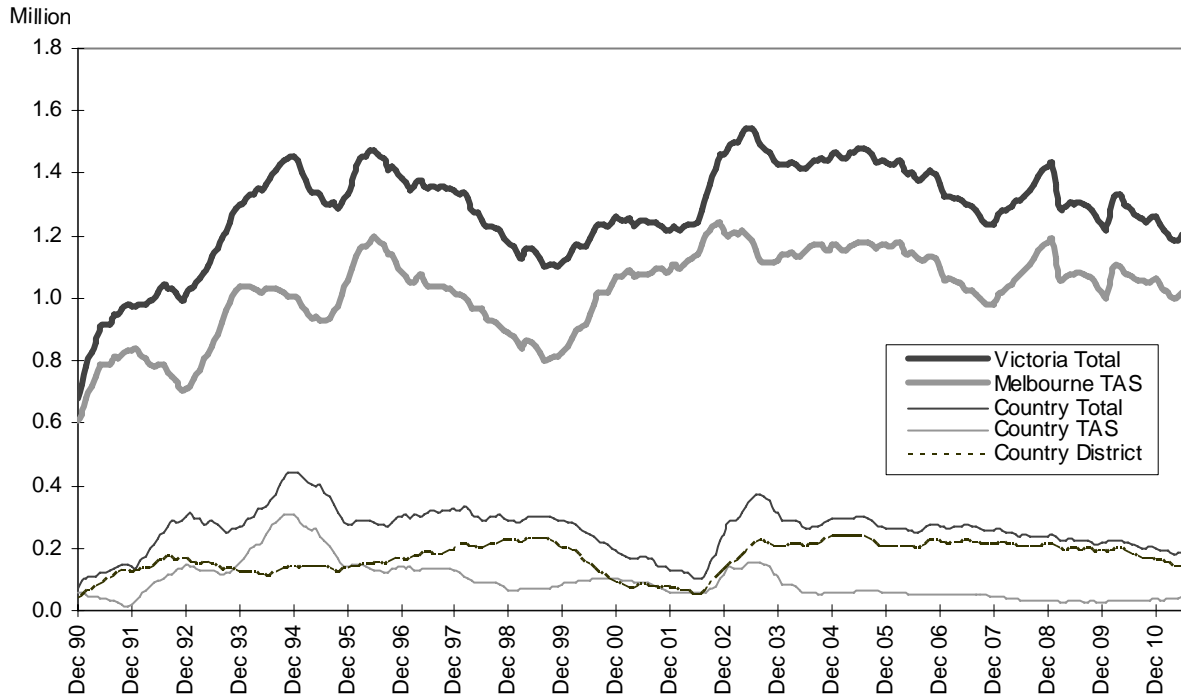
Graph 3b – Driver/rider deaths by BAC



Graph 3c – Proportion of driver/rider deaths with a BAC ge 0.05



Graph 4a – Booze-Bus RBTs



Graph 4b – RBT: Percentage positive readings

