



# ROAD SAFETY STATISTICAL SUMMARY

## April 2011



TRANSPORT  
ACCIDENT  
COMMISSION

60 Brougham Street  
Geelong Vic 3220  
PO Box 742  
Geelong Vic 3220  
Ausdoc DX 216079 Geelong

Telephone 1300 654 329  
STD Toll Free 1800 332 556  
Fax: 03 9656 9300  
[www.tac.vic.gov.au](http://www.tac.vic.gov.au)  
ABN 22 033 947 623



## Contents

<b>Status Report</b> _____	3
Road Toll (updated snapshot)	
<b>Tables</b> _____	4-7
Fatalities (rolling 12 month)	
Claims involving hospitalisation (rolling 12 month)	
Overview	
Sex	
Road user	
Location	
Age Group	
Altime	
Accident Type	
Police Service Area	
Victorian Road Deaths – monthly totals since 1951 _____	8
Fatalities by Week (2006 to 2011) _____	9
Alcohol Related Deaths _____	10
The National Picture _____	11
Police Enforcement _____	12
Explanations and References _____	13-14
Alcohol times (“Altime”) explained	
Police Service Areas	
Useful internet sites	
<b>Graphs</b> (12 month moving totals) _____	15-19

### Note about the data in this report

- All data provided in this report is the data most recently available at time of production. Typically, fatalities data is updated to the end of report month. Similarly, breath test data and safety camera data is updated to the end of the report month. A 6-month lag applies to TAC claims data, a 2-month lag applies to alcohol related fatalities data.

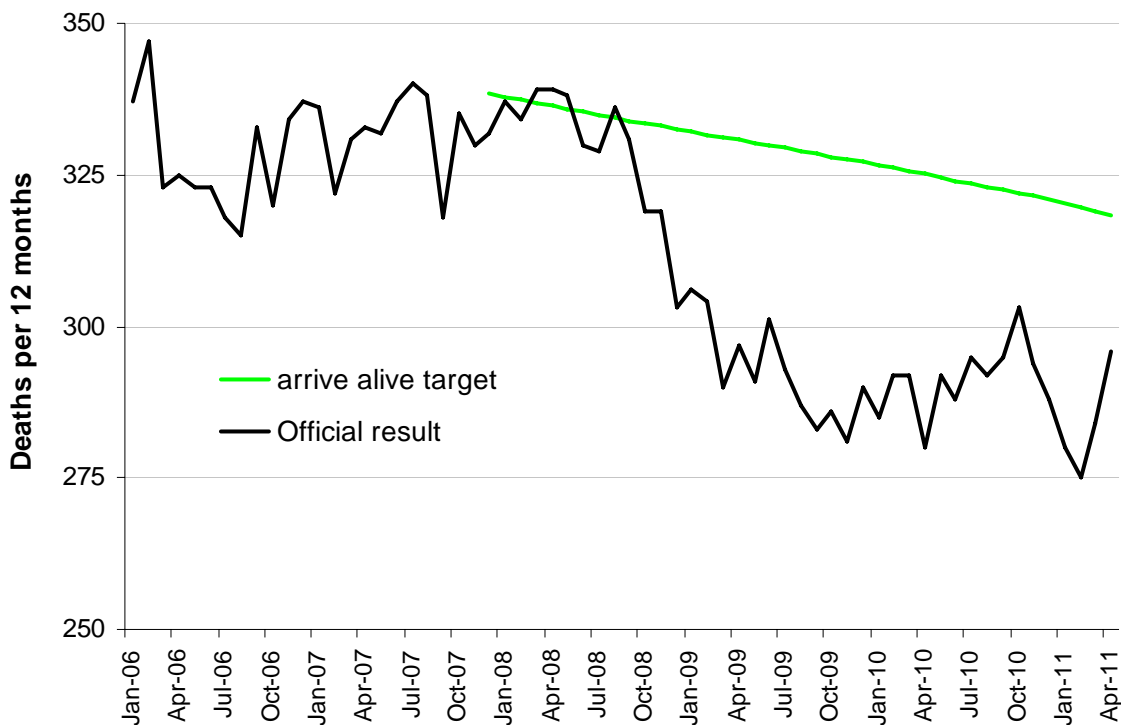
## Status Report – Road Toll

Road Toll (year to date, accurate as at midnight 30 April 2011)

- The road toll in 2011 stands at 102, 8.5% more than at the same stage in 2010 (94).
- 32 people died in March 2011 and 32 in April 2011 on Victorian roads. This compares to 23 in March 2010 and 20 in April 2010.

Category	2011	2010	2009	2011 v 2010	2011 v 2009	5 Year Av
<b>Casualties (Rolling 12 Month Total)</b>						
Fatal (to April)	296	280	297	16	(6%)	309
per 10,000 veh	0.71	0.69	0.75	0.02	(3%)	0.79
per 100,000 pop	5.30	5.12	5.56	0.18	(4%)	5.89
<b>Accidents (Rolling 12 Month Total)</b>						
Fatal (to April)	269	260	270	9	(3%)	280
per 10,000 veh	0.64	0.64	0.68	0	(0%)	0.72
per 100,000 pop	4.81	4.76	5.06	0.05	(1%)	5.34

### Victoria – Fatalities, rolling 12 months total



Note: Data is subject to revision as additional information about known accidents is received, and as new accident reports are received and processed.

## Fatalities: 12 months to April

Category	2011	2010	2009	2011 v 2010	2011 v 2009	5 Year Av
<b>Overview</b>						
Fatalities	296	280	297	16 (6%)	-1 (-0%)	309
Accidents	269	260	270	9 (3%)	-1 (-0%)	280
<b>Sex</b>						
Male	221	207	199	14 (7%)	22 (11%)	222
Female	75	73	98	2 (3%)	-23 (-23%)	87
<b>Roaduser</b>						
Bicyclist	8	8	10	0 (0%)	-2 (-20%)	8
Driver	132	128	139	4 (3%)	-7 (-5%)	146
Motorcyclist	45	50	36	-5 (-10%)	9 (25%)	45
Passenger	74	47	52	27 (57%)	22 (42%)	61
Pedestrian	37	47	60	-10 (-21%)	-23 (-38%)	48
<b>Location</b>						
Melbourne	131	141	162	-10 (-7%)	-31 (-19%)	148
Rural Victoria	165	139	135	26 (19%)	30 (22%)	161
<b>Agegroup</b>						
0-4	8	4	7	4 (100%)	1 (14%)	5
5-15	8	10	4	-2 (-20%)	4 (100%)	9
16-17	6	6	11	0 (0%)	-5 (-45%)	9
18-20	35	27	39	8 (30%)	-4 (-10%)	33
21-25	42	27	35	15 (56%)	7 (20%)	38
26-29	23	21	22	2 (10%)	1 (5%)	24
30-39	28	43	41	-15 (-35%)	-13 (-32%)	45
40-49	38	36	45	2 (6%)	-7 (-16%)	41
50-59	34	32	31	2 (6%)	3 (10%)	35
60-69	27	26	18	1 (4%)	9 (50%)	23
70+	47	48	44	-1 (-2%)	3 (7%)	46
<b>Alctime</b>						
High (Melb)	70	82	74	-12 (-15%)	-4 (-5%)	79
High (Rural)	95	59	70	36 (61%)	25 (36%)	78
High (Vic)	165	141	144	24 (17%)	21 (15%)	158
Low (Melb)	61	59	88	2 (3%)	-27 (-31%)	69
Low (Rural)	70	80	65	-10 (-13%)	5 (8%)	82
Low (Vic)	131	139	153	-8 (-6%)	-22 (-14%)	151
<b>Accident Type</b>						
<b>Intersection</b>						
Adjacent direction	33	17	17	16 (94%)	16 (94%)	26
Opposing direction	7	6	4	1 (17%)	3 (75%)	9
<b>Mid-block/other</b>						
Head on	39	35	36	4 (11%)	3 (8%)	39
Same direction	18	20	15	-2 (-10%)	3 (20%)	18
Manoeuvre/o'taking	17	19	20	-2 (-11%)	-3 (-15%)	16
On path	8	7	4	1 (14%)	4 (100%)	6
Single vehicle	132	120	130	12 (10%)	2 (2%)	134
Other (incl peds)	42	56	71	-14 (-25%)	-29 (-41%)	61

## Fatalities: 12 months to April

Category	2011	2010	2009	2011 v 2010	2011 v 2009	5 Year Av
<b>Police Service Area (based on Local Government Area (see p.13))</b>						
BALLARAT	7	4	4	3 (75%)	3 (75%)	5
BANYULE	3	1	4	2 (200%)	-1 (-25%)	2
BASS COAST	5	8	3	-3 (-38%)	2 (67%)	6
BAW BAW	15	3	6	12 (400%)	9 (150%)	9
BAYSIDE	1	1	1	0 (0%)	0 (0%)	2
BENALLA	11	8	6	3 (38%)	5 (83%)	10
BENDIGO	10	10	5	0 (0%)	5 (100%)	9
BOROONDARA	2	6	7	-4 (-67%)	-5 (-71%)	5
BRIMBANK	2	7	5	-5 (-71%)	-3 (-60%)	6
CAMPASPE	5	5	8	0 (0%)	-3 (-38%)	8
CARDINIA	9	2	7	7 (350%)	2 (29%)	5
CASEY	11	12	8	-1 (-8%)	3 (38%)	12
CENTRAL GOLDFIELDS	9	0	2	9 (350%)	7 (350%)	4
CORANGAMITE	5	6	4	-1 (-17%)	1 (25%)	6
DANDENONG	4	7	8	-3 (-43%)	-4 (-50%)	6
DAREBIN	3	0	8	3 (350%)	-5 (-63%)	4
EAST GIPPSLAND	8	11	12	-3 (-27%)	-4 (-33%)	11
FRANKSTON	7	4	11	3 (75%)	-4 (-36%)	6
GEELONG	9	11	6	-2 (-18%)	3 (50%)	7
GLEN EIRA	3	4	4	-1 (-25%)	-1 (-25%)	4
HOBSONS BAY	1	1	2	0 (0%)	-1 (-50%)	3
HORSHAM	5	3	2	2 (67%)	3 (150%)	3
HUME	4	9	9	-5 (-56%)	-5 (-56%)	7
KINGSTON	3	5	6	-2 (-40%)	-3 (-50%)	5
KNOX	1	6	3	-5 (-83%)	-2 (-67%)	4
LA TROBE	6	6	4	0 (0%)	2 (50%)	6
MACEDON RANGES	3	8	9	-5 (-63%)	-6 (-67%)	7
MANNINGHAM	2	6	4	-4 (-67%)	-2 (-50%)	3
MARIBYRNONG	1	2	1	-1 (-50%)	0 (0%)	2
MAROONDAH	3	1	0	2 (200%)	3 (350%)	2
MELBOURNE	3	2	8	1 (50%)	-5 (-63%)	6
MELTON	9	4	7	5 (125%)	2 (29%)	6
MILDURA	3	5	4	-2 (-40%)	-1 (-25%)	4
MITCHELL	9	8	6	1 (13%)	3 (50%)	8
MONASH	5	7	5	-2 (-29%)	0 (0%)	6
MOONEE VALLEY	2	3	3	-1 (-33%)	-1 (-33%)	4
MOORABOOL	8	3	8	5 (167%)	0 (0%)	6
MORELAND	7	4	5	3 (75%)	2 (40%)	4
MORNINGTON PENINSULA	11	7	8	4 (57%)	3 (38%)	10
NILLUMBIK	2	0	2	2 (200%)	0 (0%)	1
NORTHERN GRAMPIANS	4	4	4	0 (0%)	0 (0%)	4
PORT PHILLIP	1	3	1	-2 (-67%)	0 (0%)	2
SHEPPARTON	2	3	9	-1 (-33%)	-7 (-78%)	6
SOUTHERN GRAMPIANS	5	1	9	4 (400%)	-4 (-44%)	6
STONNINGTON	1	0	1	1 (100%)	0 (0%)	1
SURF COAST	5	3	2	2 (67%)	3 (150%)	4
SWAN HILL	6	5	4	1 (20%)	2 (50%)	10
WANGARATTA	11	11	3	0 (0%)	8 (267%)	8
WARRNAMBOOL	5	5	3	0 (0%)	2 (67%)	5
WELLINGTON	6	2	10	4 (200%)	-4 (-40%)	6
WHITEHORSE	5	7	2	-2 (-29%)	3 (150%)	4
WHITTLESEA	7	13	6	-6 (-46%)	1 (17%)	7
WODONGA	3	6	2	-3 (-50%)	1 (50%)	4
WYNDHAM	7	5	7	2 (40%)	0 (0%)	5
YARRA	5	3	2	2 (67%)	3 (150%)	3
YARRA RANGES	6	9	17	-3 (-33%)	-11 (-65%)	10

## Claims involving hospital admission: 12 months to October (claim acceptance date)

Category	2010	2009	2008	2010 v 2009	2010 v 2008	5 Year Av
<b>Overview</b>						
Hospital admission claims	5,392	5,485	5,633	-93 (-2%)	-241 (-4%)	5,572
<b>Sex</b>						
Male	3,108	3,235	3,298	-127 (-4%)	-190 (-6%)	3,240
Female	2,281	2,250	2,335	31 (1%)	-54 (-2%)	2,332
<b>Roaduser</b>						
Bicyclist	325	320	289	5 (2%)	36 (12%)	297
Driver	2,407	2,401	2,395	6 (0%)	12 (1%)	2,463
Motorcyclist	973	981	945	-8 (-1%)	28 (3%)	919
Passenger	1,021	1,048	1,096	-27 (-3%)	-75 (-7%)	1,130
Pedestrian	603	591	541	12 (2%)	62 (11%)	583
Tram/train	22	20	8	2 (10%)	14 (175%)	13
<b>Location</b>						
Melbourne	3,574	3,385	3,617	189 (6%)	-43 (-1%)	3,676
Rural Victoria	1,806	1,678	1,643	128 (8%)	163 (10%)	1,722
<b>Agegroup</b>						
0-4	43	55	51	-12 (-22%)	-8 (-16%)	50
5-15	224	182	240	42 (23%)	-16 (-7%)	225
16-17	131	160	158	-29 (-18%)	-27 (-17%)	165
18-20	529	604	611	-75 (-12%)	-82 (-13%)	601
21-25	636	703	739	-67 (-10%)	-103 (-14%)	725
26-29	433	424	416	9 (2%)	17 (4%)	432
30-39	861	939	961	-78 (-8%)	-100 (-10%)	947
40-49	796	832	792	-36 (-4%)	4 (1%)	810
50-59	672	593	644	79 (13%)	28 (4%)	621
60-69	439	396	460	43 (11%)	-21 (-5%)	414
70+	628	597	561	31 (5%)	67 (12%)	583
<b>Alctime</b>						
High (Melb)	1,569	1,606	1,622	-37 (-2%)	-53 (-3%)	1,684
High (Rural)	797	766	736	31 (4%)	61 (8%)	750
High (Vic)	2,370	2,603	2,591	-233 (-9%)	-221 (-9%)	2,537
Low (Melb)	2,005	1,779	1,995	226 (13%)	10 (1%)	1,992
Low (Rural)	1,009	912	907	97 (11%)	102 (11%)	972
Low (Vic)	3,022	2,882	3,042	140 (5%)	-20 (-1%)	3,035
<b>Accident Type</b>						
<b>Intersection</b>						
Adjacent direction	815	876	802	-61 (-7%)	13 (2%)	843
Opposing direction	430	444	438	-14 (-3%)	-8 (-2%)	440
<b>Mid-block/other</b>						
Head on	312	315	321	-3 (-1%)	-9 (-3%)	316
Same direction	858	750	794	108 (14%)	64 (8%)	771
Manoeuvre/o'taking	331	315	326	16 (5%)	5 (2%)	304
On path	211	223	189	-12 (-5%)	22 (12%)	197
Single vehicle	1,562	1,657	1,665	-95 (-6%)	-103 (-6%)	1,652
Other (incl peds)	873	901	788	-28 (-3%)	85 (11%)	794

Note: excludes rejected claims and claims for interstate crashes

## Claims involving hospital admission: 12 months to October (claim acceptance date)

Category	2010	2009	2008	2010 v 2009		2010 v 2008		5 Year Av
<b>Police Service Area (based on Local Government Area (see p.13))</b>								
BALLARAT	75	76	70	-1	(-1%)	5	(7%)	70
BANYULE	52	62	70	-10	(-16%)	-18	(-26%)	63
BASS COAST	80	60	83	20	(33%)	-3	(-4%)	84
BAW BAW	50	41	41	9	(22%)	9	(22%)	46
BAYSIDE	84	59	54	25	(42%)	30	(56%)	70
BENALLA	129	81	77	48	(59%)	52	(68%)	88
BENDIGO	88	91	89	-3	(-3%)	-1	(-1%)	88
BOROONDARA	139	120	120	19	(16%)	19	(16%)	138
BRIMBANK	107	151	170	-44	(-29%)	-63	(-37%)	148
CAMPASPE	76	80	66	-4	(-5%)	10	(15%)	82
CARDINIA	74	90	84	-16	(-18%)	-10	(-12%)	81
CASEY	226	208	208	18	(9%)	18	(9%)	224
CENTRAL GOLDFIELDS	26	20	26	6	(30%)	0	(0%)	21
CORANGAMITE	78	59	69	19	(32%)	9	(13%)	65
DANDENONG	178	140	173	38	(27%)	5	(3%)	175
DAREBIN	118	93	105	25	(27%)	13	(12%)	108
EAST GIPPSLAND	62	47	59	15	(32%)	3	(5%)	55
FRANKSTON	137	133	129	4	(3%)	8	(6%)	131
GEELONG	242	219	222	23	(11%)	20	(9%)	235
GLEN EIRA	102	91	105	11	(12%)	-3	(-3%)	105
HOBSONS BAY	65	58	81	7	(12%)	-16	(-20%)	68
HORSHAM	31	18	25	13	(72%)	6	(24%)	33
HUME	152	161	139	-9	(-6%)	13	(9%)	157
KINGSTON	129	124	152	5	(4%)	-23	(-15%)	134
KNOX	119	116	136	3	(3%)	-17	(-13%)	130
LA TROBE	64	40	53	24	(60%)	11	(21%)	55
MACEDON RANGES	87	77	73	10	(13%)	14	(19%)	76
MANNINGHAM	73	56	74	17	(30%)	-1	(-1%)	72
MARIBYRNONG	53	65	87	-12	(-18%)	-34	(-39%)	70
MAROONDAH	77	64	66	13	(20%)	11	(17%)	70
MELBOURNE	201	188	149	13	(7%)	52	(35%)	187
MELTON	51	43	51	8	(19%)	0	(0%)	49
MILDURA	27	25	35	2	(8%)	-8	(-23%)	32
MITCHELL	110	93	124	17	(18%)	-14	(-11%)	110
MONASH	152	156	153	-4	(-3%)	-1	(-1%)	159
MOONEE VALLEY	87	91	102	-4	(-4%)	-15	(-15%)	107
MOORABOOL	74	138	91	-64	(-46%)	-17	(-19%)	88
MORELAND	131	122	134	9	(7%)	-3	(-2%)	138
MORNINGTON PENINSULA	145	165	165	-20	(-12%)	-20	(-12%)	169
NILLUMBIK	36	32	28	4	(13%)	8	(29%)	32
NORTHERN GRAMPIANS	29	28	43	1	(4%)	-14	(-33%)	36
PORT PHILLIP	93	113	128	-20	(-18%)	-35	(-27%)	127
SHEPPARTON	57	86	69	-29	(-34%)	-12	(-17%)	81
SOUTHERN GRAMPIANS	45	29	44	16	(55%)	1	(2%)	39
STONNINGTON	113	106	120	7	(7%)	-7	(-6%)	113
SURF COAST	43	60	36	-17	(-28%)	7	(19%)	50
SWAN HILL	34	46	35	-12	(-26%)	-1	(-3%)	44
WANGARATTA	76	67	62	9	(13%)	14	(23%)	66
WARRNAMBOOL	75	39	28	36	(92%)	47	(168%)	48
WELLINGTON	73	71	55	2	(3%)	18	(33%)	63
WHITEHORSE	132	103	137	29	(28%)	-5	(-4%)	133
WHITTLESEA	129	110	114	19	(17%)	15	(13%)	113
WODONGA	69	50	65	19	(38%)	4	(6%)	58
WYNDHAM	107	101	122	6	(6%)	-15	(-12%)	118
YARRA	122	94	81	28	(30%)	41	(51%)	97
YARRA RANGES	196	203	183	-7	(-3%)	13	(7%)	201

## Victorian Road Deaths: monthly totals since 1951

Year	Jan	Feb	Mar	Apr	May	Jun	Jul	Aug	Sep	Oct	Nov	Dec	Totals
1951							61	59	52	38	29	41	
1952	45	40	54	61	54	69	67	55	44	44	31	20	584
1953	23	28	54	58	49	42	50	37	44	27	36	32	480
1954	44	42	28	60	55	36	63	33	25	52	30	41	509
1955	44	36	45	55	48	56	64	44	44	32	40	40	548
1956	34	48	51	67	53	65	71	47	39	39	44	48	606
1957	50	41	46	58	52	54	57	53	51	46	32	49	589
1958	50	38	42	58	54	41	54	53	57	40	57	52	596
1959	50	57	61	50	75	55	42	48	52	55	63	63	671
1960	49	53	57	76	70	70	67	62	61	77	52	66	760
1961	63	57	68	74	58	68	78	82	59	62	60	65	794
1962	65	41	76	78	72	80	70	77	62	53	64	70	808
1963	67	56	65	85	66	68	77	55	55	58	61	67	780
1964	73	71	78	71	83	89	80	89	67	66	62	75	904
1965	63	64	86	88	80	87	79	69	81	77	68	87	929
1966	75	59	75	103	74	86	87	80	75	66	90	85	955
1967	61	79	91	97	81	71	59	67	70	68	60	83	887
1968	70	78	86	78	73	76	73	77	72	80	81	105	949
1969	79	68	79	87	86	77	87	83	87	83	94	101	1,011
1970	85	84	106	80	87	88	110	106	78	95	68	74	1,061
1971	83	75	77	68	76	86	85	72	78	73	74	76	923
1972	61	62	75	82	75	71	98	85	83	62	80	81	915
1973	75	75	95	85	64	66	61	85	89	88	66	86	935
1974	56	62	81	60	70	73	67	62	53	70	80	72	806
1975	67	65	87	73	97	94	57	75	69	66	71	89	910
1976	79	78	88	78	69	79	60	70	82	78	77	100	938
1977	65	71	89	79	65	79	70	91	68	74	96	107	954
1978	75	54	95	63	64	69	68	77	65	84	83	72	869
1979	63	60	86	75	45	64	66	75	69	79	72	93	847
1980	48	55	66	59	47	56	60	53	45	58	61	49	657
1981	69	60	58	61	74	65	61	63	68	71	59	57	766
1982	55	53	59	59	67	45	47	71	53	69	65	66	709
1983	42	59	53	63	62	61	65	51	59	43	54	52	664
1984	65	48	58	50	56	48	46	50	71	53	55	58	658
1985	56	47	50	65	75	50	51	50	58	61	56	64	683
1986	56	50	70	69	59	53	42	54	54	52	59	51	669
1987	62	43	57	52	63	59	62	49	62	61	55	80	705
1988	49	58	69	54	79	50	54	52	64	59	43	70	701
1989	76	65	80	59	67	73	52	65	82	50	41	66	776
1990	48	44	55	39	56	64	41	34	48	35	40	44	548
1991	45	39	70	30	34	29	44	47	41	36	35	53	503
1992	34	33	34	47	33	29	23	27	28	38	30	40	396
1993	27	40	37	39	44	33	33	27	34	39	43	40	436
1994	36	31	44	35	27	33	29	37	17	27	32	30	378
1995	38	35	26	33	34	41	27	34	34	32	38	46	418
1996	40	47	35	38	28	29	30	35	49	24	33	30	418
1997	36	25	30	30	40	22	39	26	26	29	39	35	377
1998	29	29	32	36	31	22	40	19	37	36	49	30	390
1999	32	31	35	35	34	24	35	26	28	38	29	37	384
2000	32	26	46	32	39	32	33	29	36	29	44	29	407
2001	44	30	31	32	31	41	34	37	35	51	41	37	444
2002	32	31	45	31	45	32	27	25	31	30	31	37	397
2003	21	41	36	28	31	28	20	23	23	24	24	31	330
2004	32	22	30	30	46	28	27	26	22	28	25	27	343
2005	33	27	47	21	29	23	30	25	25	33	17	36	346
2006	24	37	23	23	27	23	25	22	43	20	31	39	337
2007	23	23	32	25	26	28	28	20	23	37	26	41	332
2008	28	20	37	25	25	20	27	27	18	25	26	25	303
2009	31	18	23	32	19	30	19	21	14	28	21	34	290
2010	26	25	23	20	31	26	26	18	17	36	12	28	288
2011	18	20	32	32									102
<b>Ave</b>	<b>50</b>	<b>48</b>	<b>57</b>	<b>56</b>	<b>55</b>	<b>53</b>	<b>53</b>	<b>52</b>	<b>51</b>	<b>51</b>	<b>51</b>	<b>57</b>	<b>637</b>
<b>Max</b>	<b>85</b>	<b>84</b>	<b>106</b>	<b>103</b>	<b>97</b>	<b>94</b>	<b>110</b>	<b>106</b>	<b>89</b>	<b>95</b>	<b>96</b>	<b>107</b>	<b>1,061</b>
<b>Min</b>	<b>18</b>	<b>18</b>	<b>23</b>	<b>20</b>	<b>19</b>	<b>20</b>	<b>19</b>	<b>18</b>	<b>14</b>	<b>20</b>	<b>12</b>	<b>20</b>	<b>288</b>



## Fatalities by Week (2006 to 2011)

Week Ending	2006	2007	2008	2009	2010	2011	Cumulative 2011	% Change 2011-2010	12 Month Moving Total
2-Jan	3	3	1	3	1	2	2	100%	289
9-Jan	3	2	8	11	6	2	4	-43%	285
16-Jan	4	7	5	6	1	7	11	38%	291
23-Jan	9	5	4	2	9	4	15	-12%	286
30-Jan	5	5	8	8	6	3	18	-22%	283
6-Feb	4	7	5	1	9	8	26	-19%	282
13-Feb	6	4	4	10	5	3	29	-22%	280
20-Feb	18	10	4	3	8	5	34	-24%	277
27-Feb	8	3	8	5	4	4	38	-22%	277
6-Mar	3	9	8	2	6	8	46	-16%	279
13-Mar	6	9	5	6	5	6	52	-13%	280
20-Mar	3	3	13	3	4	8	60	-6%	284
27-Mar	8	8	7	7	8	7	67	-7%	283
3-Apr	5	4	10	8	5	5	72	-6%	283
10-Apr	4	11	3	5	4	13	85	5%	292
17-Apr	3	4	6	8	6	5	90	3%	291
24-Apr	2	3	6	10	4	6	96	5%	293
1-May	13	7	5	6	4	7	103	8%	296
8-May	11	3	7	7	3	5	108	10%	298
15-May	3	6	4	4	9	9	117	9%	298
22-May	4	8	8	1	6	9	126	12%	301
29-May	8	6	6	3	12	2	128	2%	291
5-Jun	6	15	2	7	2				
12-Jun	4	3	6	6	7				
19-Jun	7	4	4	8	8				
26-Jun	6	7	7	6	5				
3-Jul	1	2	5	7	8				
10-Jul	7	9	10	9	4				
17-Jul	7	7	2	2	3				
24-Jul	7	6	3	5	5				
31-Jul	4	5	8	3	10				
7-Aug	7	2	8	3	7				
14-Aug	4	2	6	11	3				
21-Aug	5	4	3	4	5				
28-Aug	5	11	7	1	2				
4-Sep	2	3	5	4	3				
11-Sep	5	7	3	1	4				
18-Sep	13	4	6	7	1				
25-Sep	12	8	6	2	6				
2-Oct	12	5	6	2	4				
9-Oct	9	12	8	2	12				
16-Oct	5	6	4	8	7				
23-Oct	4	8	4	9	8				
30-Oct	1	6	4	8	6				
6-Nov	10	6	4	4	5				
13-Nov	2	7	7	6	0				
20-Nov	9	4	10	6	3				
27-Nov	8	7	3	4	3				
4-Dec	16	8	4	5	7				
11-Dec	4	16	9	5	6				
18-Dec	6	5	3	11	6				
25-Dec	11	8	9	10	9				
31-Dec	5	8	2	5	4				
<b>Total</b>	<b>337</b>	<b>332</b>	<b>303</b>	<b>290</b>	<b>288</b>	<b>128</b>			

## Alcohol Related Deaths

**NOTE: UPDATES TO THIS DATA WERE NOT AVAILABLE AT TIME OF REPORT**

### BAC Fatalities (12 months to April 2010)

- 24% of killed and tested drivers and riders had a BAC at 0.05 g/100ml or over (41 of 172) compared to 25% over the previous 12 month period (43 of 169).
- In Melbourne, 21 drivers/riders killed and tested were at or over 0.05, with 38% of these having a BAC in excess of 0.15 g/100ml. Across rural Victoria, 20 drivers/riders killed and tested were at or over 0.05, with 65% of these having a BAC over 0.15.
- Of the 41 drivers and riders killed and tested at or over 0.05, 15% (6) were aged under 21, 39% (16) were aged 21-29, 27% (11) were aged 30-39 and 20% (8) were aged 40 years and over. In the previous year (43 killed) the corresponding figures were 19% (8), 28% (12), 19% (8) and 35% (15), respectively.

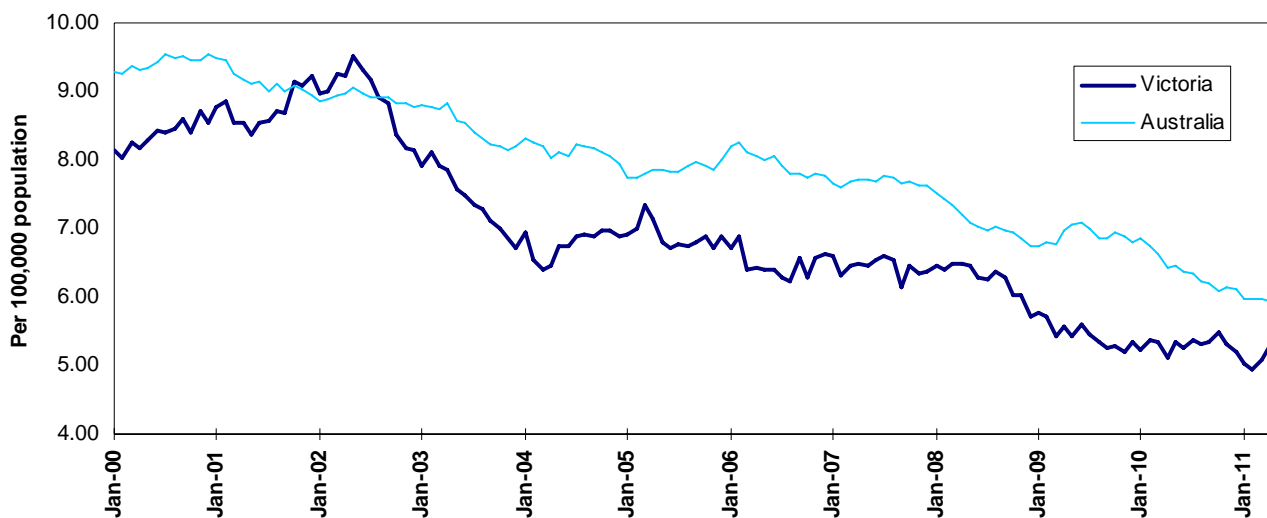
Category	2010	2009	2008	2010 v 2009	2010 v 2008	5 Year Av
<b>Melbourne Drivers and Riders</b>						
<0.05	55	63	63	-8	(-13%)	62
[a] at 0.05 & above	21	17	25	4	(24%)	21
% at 0.05 & above	(28%)	(21%)	(28%)			(25%)
[b] >0.15	8	10	12	-2	(-20%)	9
%>0.15	(11%)	(13%)	(14%)			(11%)
[b] as a % of [a]	(38%)	(59%)	(48%)			(43%)
BAC Unknown	5	3	1	2	(67%)	3
<b>Country Drivers and Riders</b>						
<0.05	76	63	90	13	(21%)	78
[a] at 0.05 & above	20	26	32	-6	(-23%)	26
% at 0.05 & above	(21%)	(29%)	(26%)			(25%)
[b] >0.15	13	17	20	-4	(-24%)	17
%>0.15	(14%)	(19%)	(16%)			(16%)
[b] as a % of [a]	(65%)	(65%)	(63%)			(64%)
BAC Unknown	7	2	1	5	(250%)	5
<b>Victorian Total Drivers and Riders</b>						
<0.05	131	126	153	5	(4%)	140
[a] at 0.05 & above	41	43	57	-2	(-5%)	47
% at 0.05 & above	(24%)	(25%)	(27%)			(25%)
[b] >0.15	21	27	32	-6	(-22%)	26
%>0.15	(12%)	(16%)	(15%)			(14%)
[b] as a % of [a]	(51%)	(63%)	(56%)			(54%)
BAC Unknown	12	5	2	7	(140%)	7
<b>Victorian Total Pedestrians</b>						
<0.05	32	35	38	-3	(-9%)	33
[a] at 0.05 & above	8	21	9	-13	(-62%)	14
% at 0.05 & above	(20%)	(38%)	(19%)			(30%)
[b] >0.15	3	10	8	-7	(-70%)	9
%>0.15	(8%)	(18%)	(17%)			(19%)
[b] as a % of [a]	(38%)	(48%)	(89%)			(62%)
BAC Unknown	6	4	2	2	(50%)	4

## The National Picture

State	Killed (12 months to April)					2011 v 2010	
	2011	2010	2009	2008			
NSW	387	447	416	394	-60	(-13%)	
VIC	296	280	297	339	16	(6%)	
QLD	257	282	342	354	-25	(-9%)	
SA	108	127	110	110	-19	(-15%)	
WA	200	179	207	214	21	(12%)	
TAS	30	48	49	38	-18	(-38%)	
NT	44	36	66	61	8	(22%)	
ACT	14	19	15	12	-5	(-26%)	
AUST TOTAL	1,334	1,418	1,502	1,522	-84	(-6%)	
AUST minus VIC	1,040	1,138	1,205	1,183	-98	(-9%)	

State	Deaths per 10,000 registered vehicles (12 months to April)			Deaths per 100,000 population (12 months to April)		
	2011	2010	2009	2011	2010	2009
NSW	0.82	0.96	0.91	5.31	6.26	5.93
VIC	0.71	0.69	0.75	5.30	5.12	5.56
QLD	0.76	0.85	1.06	5.64	6.35	7.91
SA	0.86	1.04	0.92	6.54	7.79	6.84
WA	1.06	0.97	1.15	8.63	7.93	9.46
TAS	0.72	1.18	1.24	5.89	9.52	9.81
NT	3.18	2.72	5.22	19.02	15.90	29.79
ACT	0.54	0.76	0.61	3.87	5.37	4.33
AUST TOTAL	0.82	0.89	0.97	5.93	6.44	6.97
AUST minus VIC	0.86	0.96	1.04	6.15	6.87	7.44

## Victoria v Australia – 12 Month Moving Fatality Rate



## Booze-Bus Random Breath Testing

12 months to April 2011 (monthly totals)

	2010						2011					
	May	Jun	Jul	Aug	Sep	Oct	Nov	Dec	Jan	Feb	Mar	Apr
Melbourne	89,275	85,838	86,195	79,603	91,365	78,241	81,341	97,729	78,392	67,733	80,249	85,872
Country	13,669	13,900	13,420	9,459	14,650	15,957	19,375	19,112	20,355	16,658	11,753	13,440
<b>Vic Total</b>	<b>102,944</b>	<b>99,738</b>	<b>99,615</b>	<b>89,062</b>	<b>106,015</b>	<b>94,198</b>	<b>100,716</b>	<b>116,841</b>	<b>98,747</b>	<b>84,391</b>	<b>92,002</b>	<b>99,312</b>

12 months to April 2011 vs previous 12 months

	2011	2010	2009	2011 v 2010	2011 v 2009
Melbourne	1,001,833	1,102,307	1,071,369	-100,474 (-9%)	-69,536 (-6%)
Country	181,748	227,182	222,369	-45,434 (-20%)	-40,621 (-18%)
<b>Vic Total</b>	<b>1,183,581</b>	<b>1,329,489</b>	<b>1,293,806</b>	<b>-145,908 (-11%)</b>	<b>-110,225 (-9%)</b>

## Mobile Safety Camera Data

Speed Infringements Issued from Mobile Cameras (monthly totals)

Monthly Average = 48,057

	2010						2011					
	May	Jun	Jul	Aug	Sep	Oct	Nov	Dec	Jan	Feb	Mar	Apr
	48,585	50,841	52,675	47,719	49,546	49,408	47,500	44,921	51,861	41,104	52,252	40,271

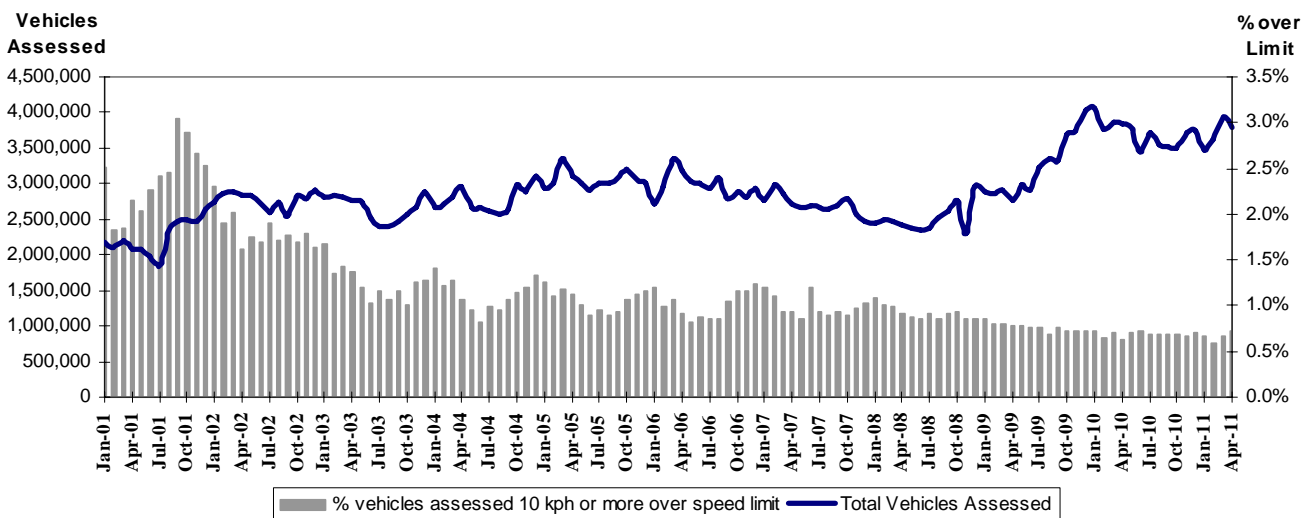
Excessive Speed Infringements Issued from Mobile Cameras (monthly totals)

Monthly Average = 377

	2010						2011					
	May	Jun	Jul	Aug	Sep	Oct	Nov	Dec	Jan	Feb	Mar	Apr
	372	372	422	311	354	377	330	363	352	398	466	406

Note: An ESI is defined as 25km/h over the speed limit except in a 110km/h zone where it is 20km/h over the limit.

Mobile Safety Cameras – Vehicles assessed and percentage of vehicles assessed 10km/h or more over speed limit per month



## Explanations and References

Hi-Alcetime is those times of the day and week (*shaded in the table below*) when casualty crashes are ten times more likely to involve alcohol than casualty crashes at other (Lo-Alcetime) times.

	12am - 6am	6am - 8am	8am - 10am	10am - 2pm	2pm - 4pm	4pm - 6pm	6pm - 12pm
Monday							
Tuesday							
Wednesday							
Thursday							
Friday							
Saturday							
Sunday							

Police Service Areas align with Local Government Areas. Most Police Service Areas are equivalent to a single Local Government Area, while the remainder comprise two or three Local Government Areas.

Police Service Area	Local Government Area(s)	Police Service Area	Local Government Area(s)
BALLARAT	BALLARAT	MARIBYRNONG	MARIBYRNONG
BANYULE	BANYULE	MAROONDAH	MAROONDAH
BASS COAST	BASS COAST, SOUTH GIPPSLAND	MELBOURNE	MELBOURNE
BAW BAW	BAWBAW	MELTON	MELTON
BAYSIDE	BAYSIDE	MILDURA	MILDURA
BENALLA	BENALLA, MANSFIELD, STRATHBOGIE	MITCHELL	MITCHELL, MURRINDINDI
BENDIGO	GREATER BENDIGO, LODDON	MONASH	MONASH
BOROONDARA	BOROONDARA	MOONEE VALLEY	MOONEE VALLEY
BRIMBANK	BRIMBANK	MOORABOOL	GOLDEN PLAINS, HEPBURN, MOORABOOL
CAMPASPE	CAMPASPE	MORELAND	MORELAND
CARDINIA	CARDINIA	MORNINGTON PENINSULA	MORNINGTON PENINSULA
CASEY	CASEY	NILLUMBIK	NILLUMBIK
CENTRAL GOLDFIELDS	CENTRAL GOLDFIELDS, PYRENEES	NORTHERN GRAMPIANS	ARARAT, NORTHERN GRAMPIANS, YARRIAMIACK
CORANGAMITE	COLAC-OTWAY, CORANGAMITE	PORT PHILLIP	PORT PHILLIP
DANDENONG	GREATER DANDENONG	SHEPPARTON	GREATER SHEPPARTON
DAREBIN	DAREBIN	SOUTHERN GRAMPIANS	GLENELG, SOUTHERN GRAMPIANS
EAST GIPPSLAND	EAST GIPPSLAND	STONNINGTON	STONNINGTON
FRANKSTON	FRANKSTON	SURFCOAST	SURFCOAST
GEELONG	GREATER GEELONG, QUEENSCLIFF	SWANHILL	BULOKE
GLENEIRA	GLENEIRA	WANGARATTA	ALPINE, WANGARATTA
HOBSONS BAY	HOBSONSBAY	WARRNAMBOOL	MOYNE, WARRNAMBOOL
HORSHAM	HINDMARSH, HORSHAM, WESTWIMMERA	WELLINGTON	WELLINGTON
HUME	HUME	WHITEHORSE	WHITEHORSE
KINGSTON	KINGSTON	WHITTLESEA	WHITTLESEA
KNOX	KNOX	WODONGA	INDIGO, TOWONG, WODONGA
LATROBE	LATROBE	WYNDHAM	WYNDHAM
MACEDON RANGES	MOUNT ALEXANDER, MACEDON RANGES	YARRA	YARRA
MANNINGHAM	MANNINGHAM	YARRA RANGES	YARRA RANGES

## Useful Internet Sites

### TAC Sites

- TAC Safety (Road Safety) [www.tacsafety.com.au](http://www.tacsafety.com.au)
- TAC How safe is your car [www.howsafeisyourcar.com.au](http://www.howsafeisyourcar.com.au)
- TAC Learners Log [www.learnerslog.com.au](http://www.learnerslog.com.au)
- TAC Motorcycle Safety Website [www.spokes.com.au](http://www.spokes.com.au)
- TAC Corporate site [www.tac.vic.gov.au](http://www.tac.vic.gov.au)

### Victorian Sites:

- arrive alive [www.vicroads.vic.gov.au](http://www.vicroads.vic.gov.au)
- VicRoads [www.vicroads.vic.gov.au](http://www.vicroads.vic.gov.au)
- Victorian Police [www.police.vic.gov.au](http://www.police.vic.gov.au)
- Parliamentary Road Safety Committee [www.parliament.vic.gov.au/rsc/](http://www.parliament.vic.gov.au/rsc/)
- ARRB Transport Research [www.arrb.com.au](http://www.arrb.com.au)
- RACV [www.racv.com.au](http://www.racv.com.au)
- Monash University Accident Research Centre [www.monash.edu.au/muarc](http://www.monash.edu.au/muarc)
- Roadsafe [www.roadsafe.org.au](http://www.roadsafe.org.au)

### National and Interstate Sites:

- Australian Transport Safety Bureau [www.atsb.gov.au](http://www.atsb.gov.au)
- Roads and Traffic Authority (NSW) [www.rta.nsw.gov.au](http://www.rta.nsw.gov.au)
- Queensland Transport - Road Safety [transport.qld.gov.au/Home/Safety/Road](http://transport.qld.gov.au/Home/Safety/Road)
- Department of Transport (SA) [www.transport.sa.gov.au/index.htm](http://www.transport.sa.gov.au/index.htm)
- Main Roads Western Australia - Road Safety [www.mrwa.wa.gov.au](http://www.mrwa.wa.gov.au)

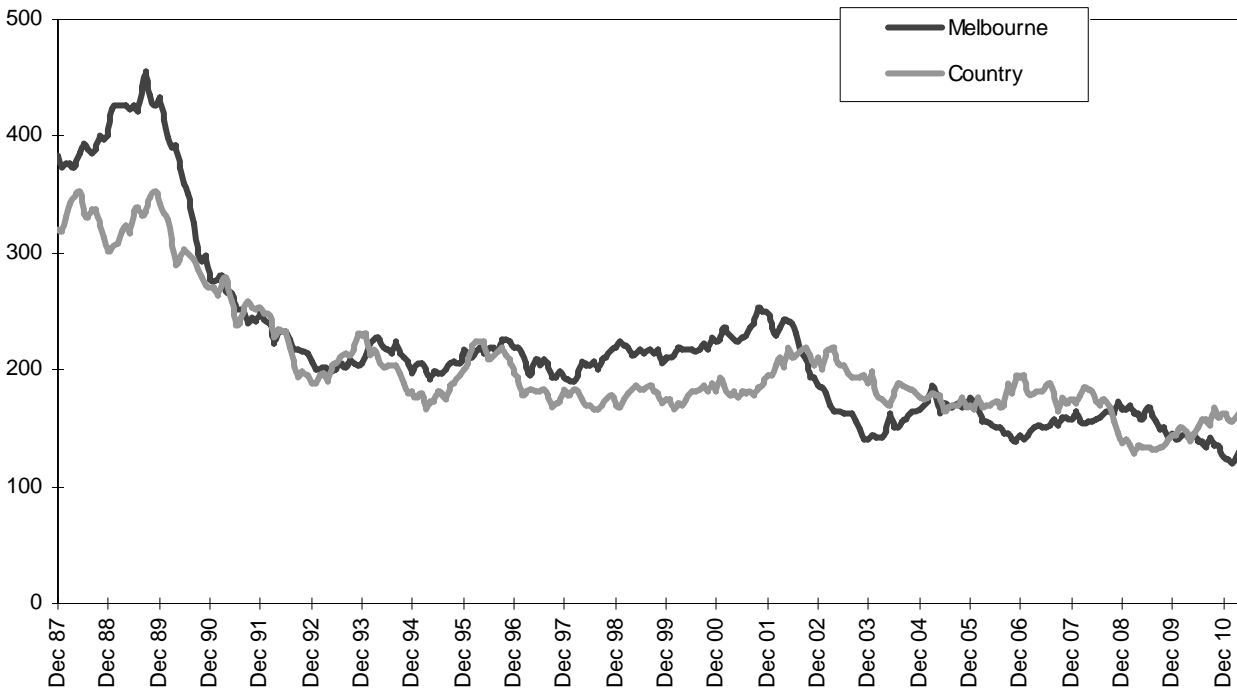
### International Sites:

- National Highway Traffic Safety Admin (USA) [www.nhtsa.dot.gov](http://www.nhtsa.dot.gov)
- Swedish Road and Transport Institute (VTI) [www.vti.se](http://www.vti.se)
- SWOV Institute for Road Safety Research [www.swov.nl](http://www.swov.nl)

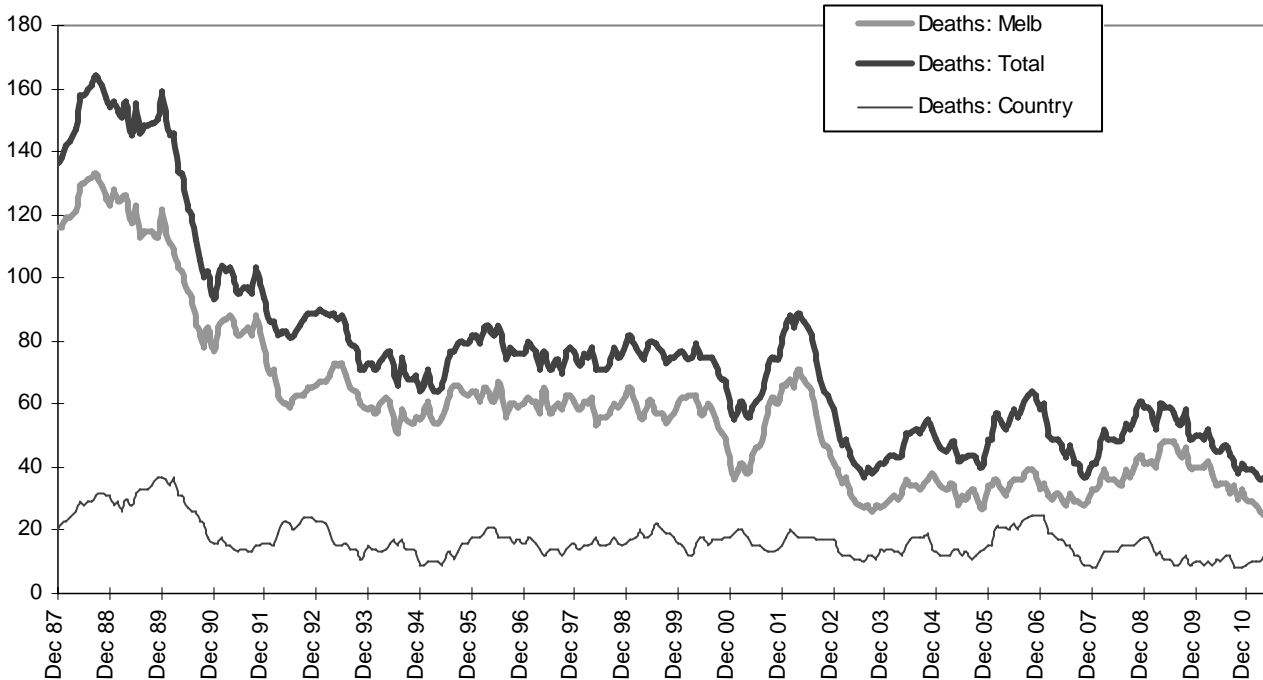
### Related Sites:

- Australian Drug Foundation [www.adf.org.au](http://www.adf.org.au)
- Bicycle Victoria [www.bv.com.au](http://www.bv.com.au)

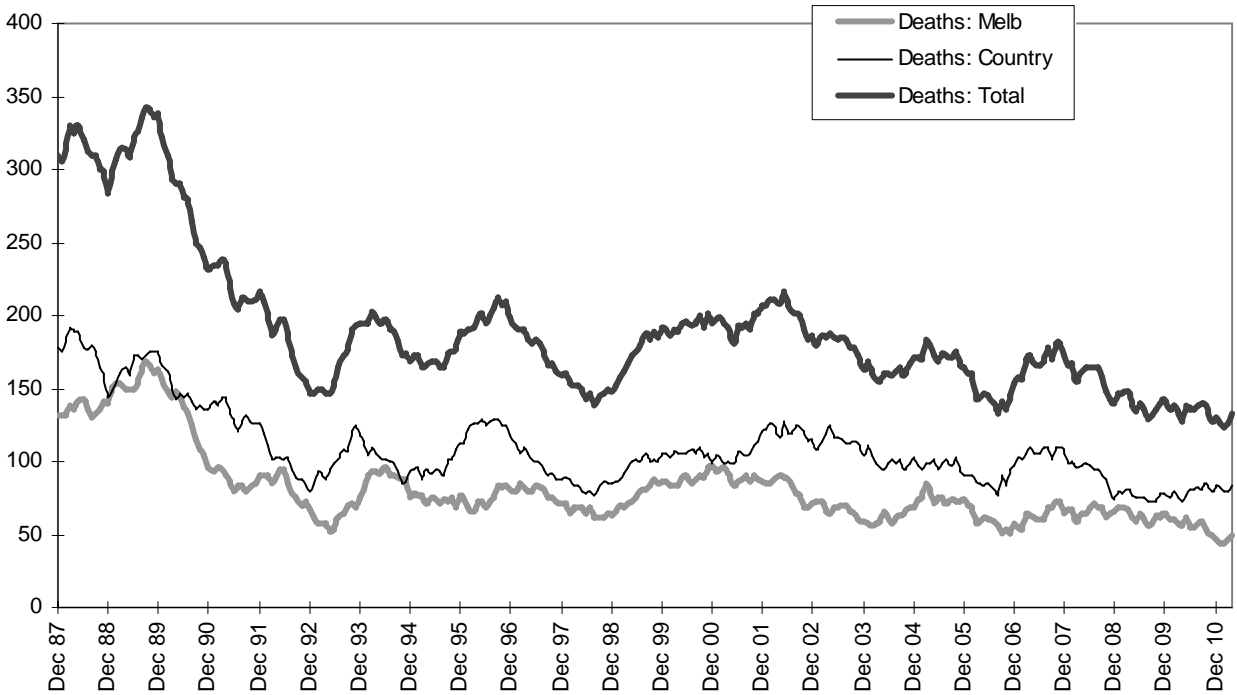
Graph 1 – Melbourne/country fatalities



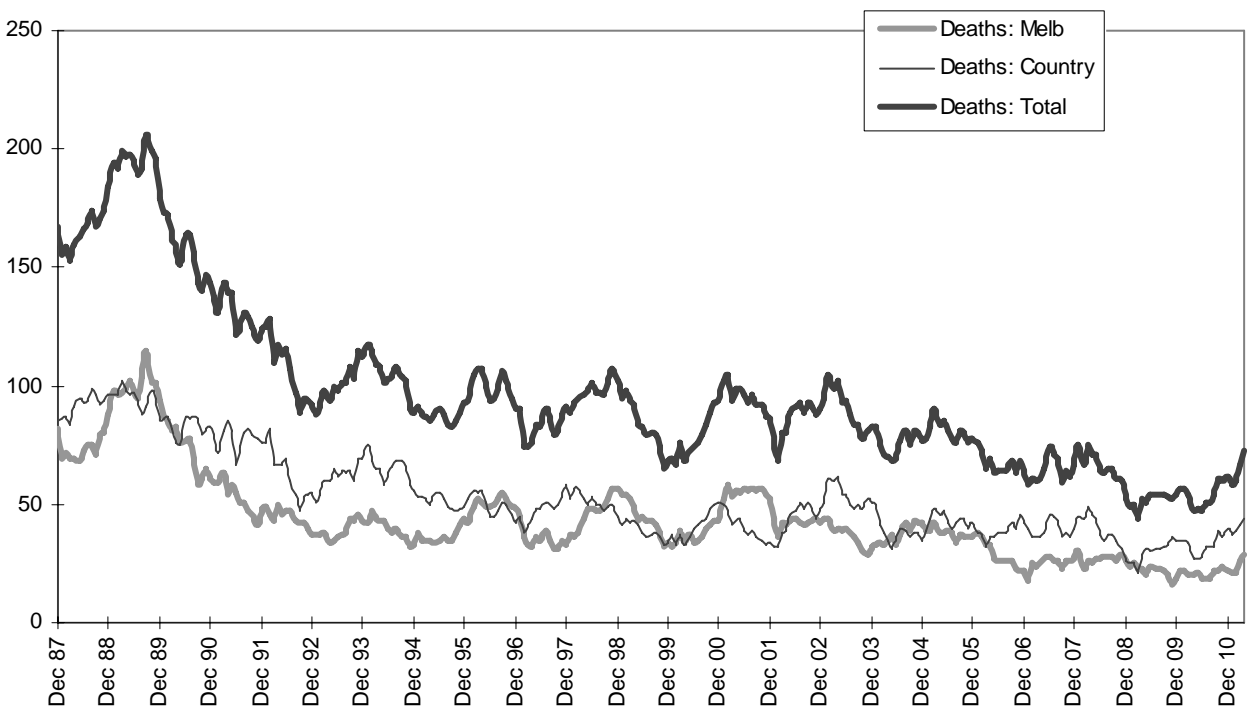
Graph 2a – Pedestrian fatalities (Melbourne/country)



Graph 2b – Driver fatalities (Melbourne/country)

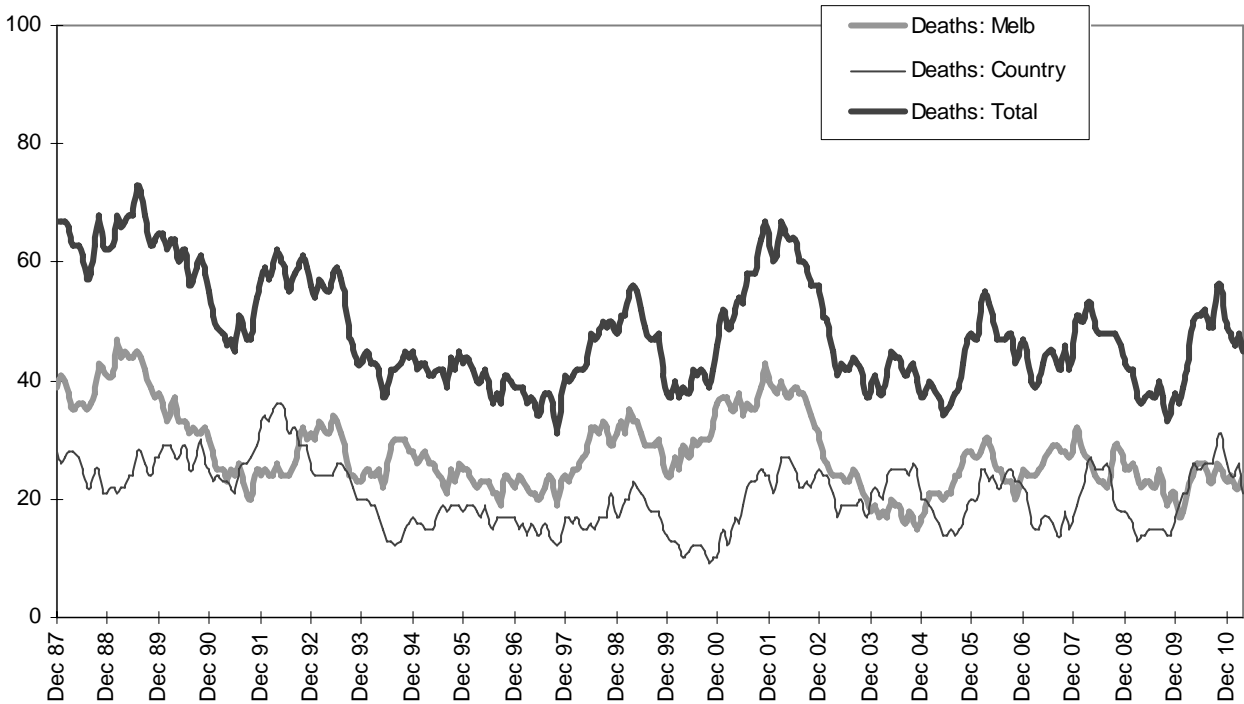


Graph 2c – Passenger fatalities (Melbourne/country)

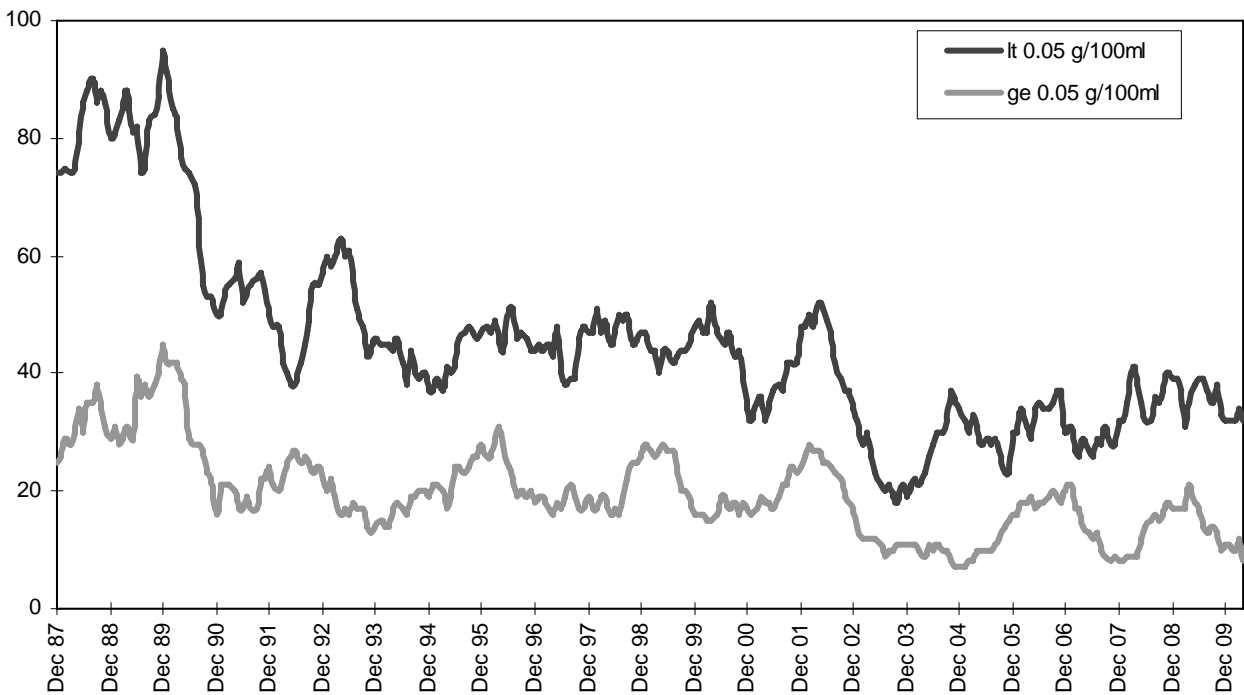




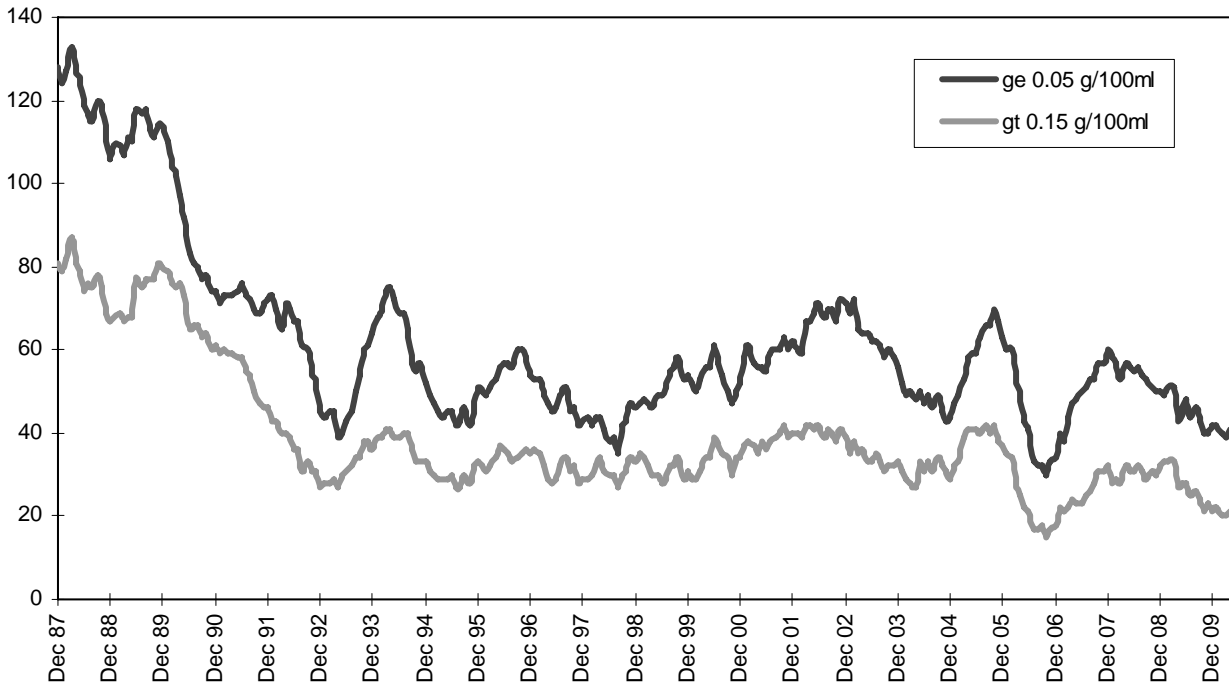
Graph 2d –Motorcyclist fatalities (Melbourne/country)



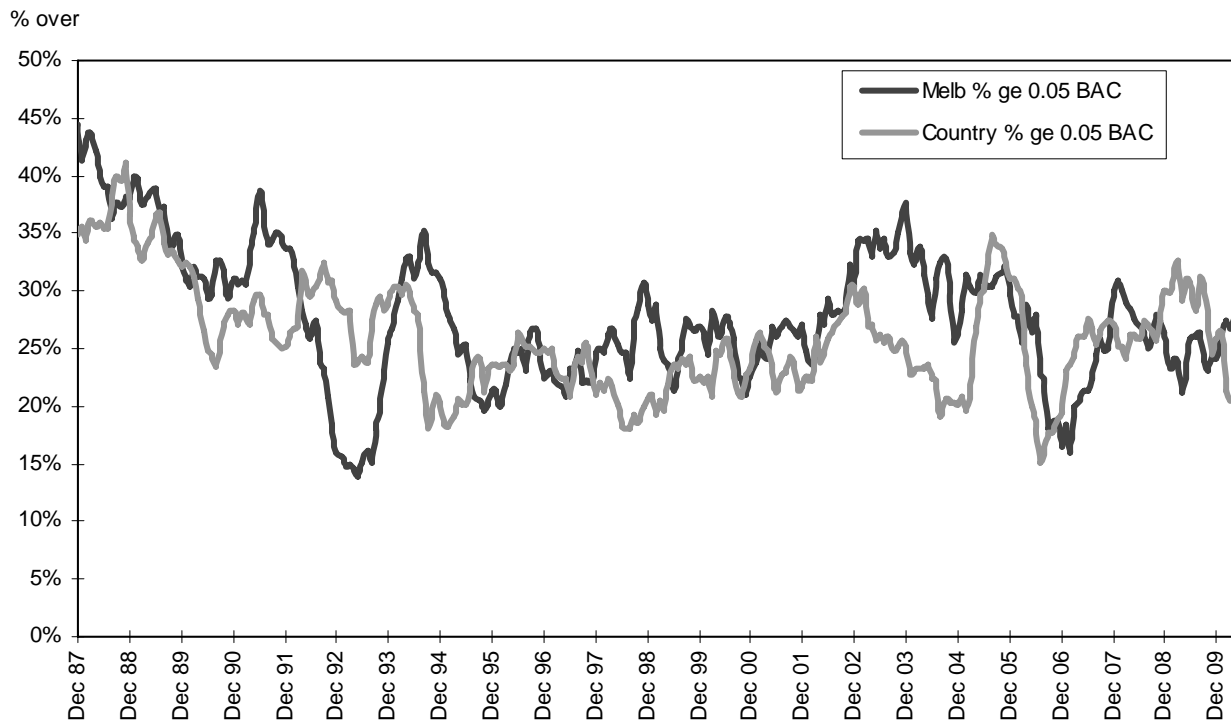
Graph 3a – Pedestrian deaths by BAC



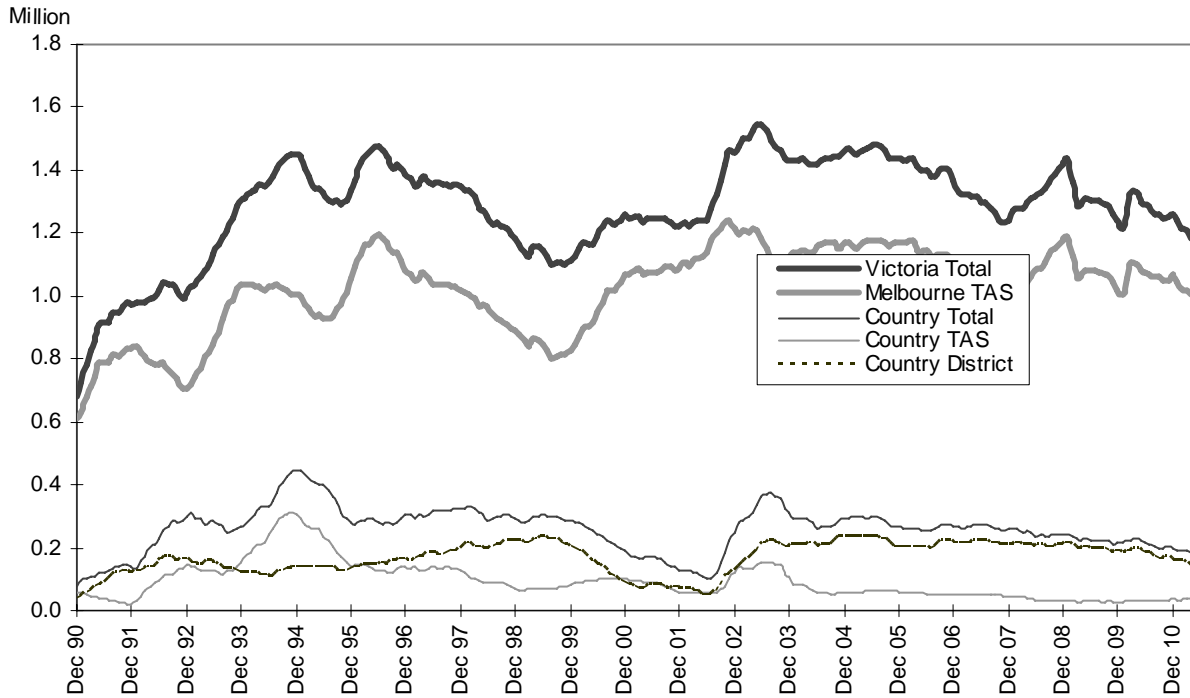
Graph 3b – Driver/rider deaths by BAC



Graph 3c – Proportion of driver/rider deaths with a BAC ge 0.05



Graph 4a – Booze-Bus RBTs



Graph 4b – RBT: Percentage positive readings

