



ROAD SAFETY STATISTICAL SUMMARY

June 2012



**TRANSPORT
ACCIDENT
COMMISSION**

60 Brougham Street
Geelong Vic 3220
PO Box 742
Geelong Vic 3220
Ausdoc DX 216079 Geelong

Telephone 1300 654 329
STD Toll Free 1800 332 556
Fax: 03 9656 9300
www.tac.vic.gov.au
ABN 22 033 947 623



Contents

Status Reports _____	4-5
Fatalities (updated snapshot)	
Claims involving an acute hospital admission (updated snapshot)	
Tables _____	6-9
Fatalities (rolling 12 month)	
Claims involving an acute hospital admission (rolling 12 month)	
Overview	
Sex	
Road user	
Location	
Age Group	
Alctime	
Accident Type	
Police Service Area	
Fatalities – monthly totals since 1951 _____	10
Fatalities by Week (2007 to 2012) _____	11
Alcohol Related Fatalities _____	12
The National Picture _____	13
Police Enforcement _____	14
Explanations and References _____	15-16
Alcohol times (“Alctime”) explained	
Police Service Areas	
Useful internet sites	
Graphs (12 month moving totals) _____	17-24

Note about the data in this report

- All data provided in this report is the data most recently available at time of production. Typically, fatalities data is updated to the end of report month. Similarly, breath test data and safety camera data is updated to the end of the report month. A 6-month lag applies to TAC claims data, and a 2-month lag applies to alcohol related fatalities data.
- Note that reported data inclusive of February 2008 or February 2012 will have one extra day of exposure compared to non-leap years.

Status Report – Fatalities

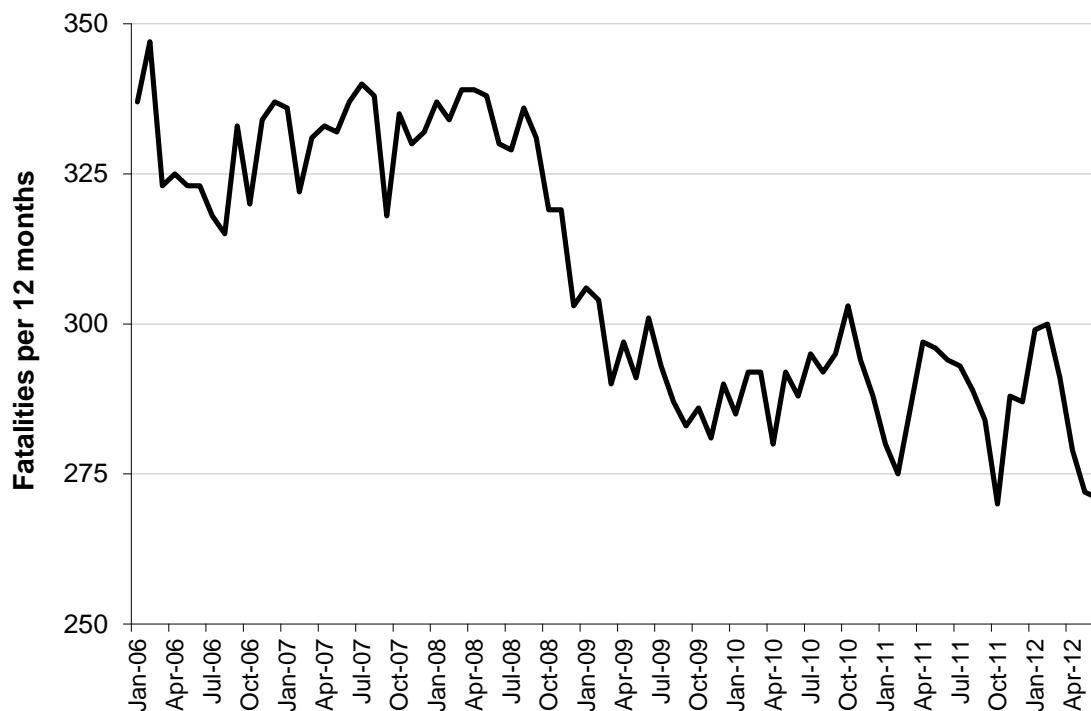
Fatalities (year to date, to end June 2012)

- The number of road fatalities in 2012 stands at 141, 10% less than at the same stage in 2011 (157).
- 23 people were fatally injured in May 2012 and 23 in June 2012 on Victorian roads. This compares to 30 in May 2011 and 24 in June 2011.

Category	2012	2011	2010	2012 v 2011		2012 v 2010		5 Year Av
Fatal Injuries (Rolling 12 Month Total)								
Fatal (to June)	271	294	288	-23	(-8%)	-17	(-6%)	310
per 10,000 veh	0.63	0.70	0.70	-0.07	(-10%)	-0.07	(-10%)	0.61
per 100,000 pop	4.79	5.26	5.25	-0.47	(-9%)	-0.46	(-9%)	6.14

Accidents (Rolling 12 Month Total)								
Fatal (to June)	247	273	266	-26	(-10%)	-19	(-7%)	281
per 10,000 veh	0.58	0.65	0.65	-0.07	(-11%)	-0.07	(-11%)	0.72
per 100,000 pop	4.36	4.89	4.85	-0.53	(-11%)	-0.49	(-10%)	5.31

Victoria – Fatalities, rolling 12 months total



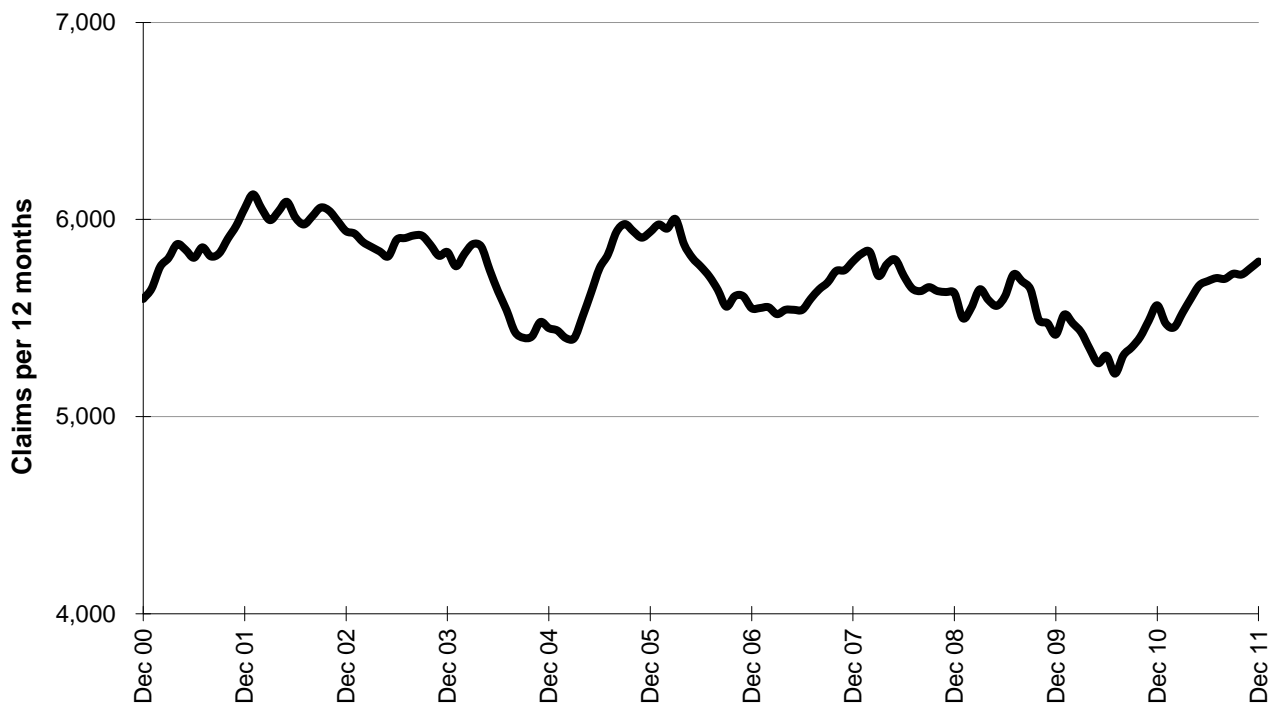
Note: Data is subject to revision as additional information about known accidents is received, and as new accident reports are received and processed.

Status Report – Claims involving an acute hospital admission* (by claim acceptance date)

Claims (year to date, to midnight 31 December 2011)

Category	2011	2010	2009	2011 v 2010		2011 v 2009		5 Year Av
Claims involving an acute hospital admission (Rolling 12 Month Total)								
Claims (to December)	5,787	5,565	5,416	222	(4%)	371	(7%)	5,589
per 10,000 veh	102.9	100.3	99.8	2.6	(3%)	3.1	(3%)	106.7
per 100,000 pop	13.6	13.4	13.4	0.2	(1%)	0.2	(1%)	14.4

Victoria – Claims involving an acute hospital admission, rolling 12 months total



Note: Data is subject to revision as additional information about known claims is received, and as new claims are received and processed.

*An acute hospital admission refers to a hospital admission that occurred within 7 days of accident.

Fatalities: 12 months to June

Category	2012	2011	2010	2012 v 2011	2012 v 2010	5 Year Av
Overview						
Fatalities	271	294	288	-23 (-8%)	-17 (-6%)	310
Accidents	247	273	266	-26 (-10%)	-19 (-7%)	281
Sex						
Male	188	220	216	-32 (-15%)	-28 (-13%)	223
Female	83	74	72	9 (12%)	11 (15%)	87
Roaduser						
Bicyclist	9	7	9	2 (29%)	0 (0%)	8
Driver	122	129	136	-7 (-5%)	-14 (-10%)	147
Motorcyclist	40	48	51	-8 (-17%)	-11 (-22%)	46
Passenger	52	69	47	-17 (-25%)	5 (11%)	62
Pedestrian	48	41	45	7 (17%)	3 (7%)	47
Location						
Melbourne	135	122	138	13 (11%)	-3 (-2%)	147
Rural Victoria	136	172	150	-36 (-21%)	-14 (-9%)	163
Agegroup						
0-4	3	7	4	-4 (-57%)	-1 (-25%)	5
5-15	9	6	8	3 (50%)	1 (13%)	8
16-17	9	6	6	3 (50%)	3 (50%)	9
18-20	35	36	23	-1 (-3%)	12 (52%)	34
21-25	26	43	28	-17 (-40%)	-2 (-7%)	38
26-29	23	21	24	2 (10%)	-1 (-4%)	25
30-39	41	27	45	14 (52%)	-4 (-9%)	44
40-49	25	40	37	-15 (-38%)	-12 (-32%)	42
50-59	30	33	35	-3 (-9%)	-5 (-14%)	36
60-69	24	27	30	-3 (-11%)	-6 (-20%)	24
70+	46	48	48	-2 (-4%)	-2 (-4%)	45
Alctime						
High (Melb)	68	64	79	4 (6%)	-11 (-14%)	78
High (Rural)	61	97	67	-36 (-37%)	-6 (-9%)	79
High (Vic)	129	161	146	-32 (-20%)	-17 (-12%)	157
Low (Melb)	67	58	59	9 (16%)	8 (14%)	69
Low (Rural)	75	75	83	0 (0%)	-8 (-10%)	84
Low (Vic)	142	133	142	9 (7%)	0 (0%)	153
Accident Type						
Intersection						
Adjacent direction	23	35	22	-12 (-34%)	1 (5%)	28
Opposing direction	4	9	6	-5 (-56%)	-2 (-33%)	9
Mid-block/other						
Head on	37	31	39	6 (19%)	-2 (-5%)	39
Same direction	12	17	21	-5 (-29%)	-9 (-43%)	18
Manoeuvre/o'taking	17	18	14	-1 (-6%)	3 (21%)	16
On path	6	8	8	-2 (-25%)	-2 (-25%)	7
Single vehicle	114	130	122	-16 (-12%)	-8 (-7%)	135
Other (incl peds)	58	46	56	12 (26%)	2 (4%)	60

Fatalities: 12 months to June

Category	2012	2011	2010	2012 v 2011	2012 v 2010	5 Year Av
Police Service Area (based on Local Government Area (see p.13))						
BALLARAT	2	14	4	-12 (-86%)	-2 (-50%)	7
BANYULE	3	3	1	0 (0%)	2 (200%)	2
BASS COAST	6	7	8	-1 (-14%)	-2 (-25%)	6
BAW BAW	2	14	4	-12 (-86%)	-2 (-50%)	8
BENALLA	5	7	14	-2 (-29%)	-9 (-64%)	8
BENDIGO	10	4	11	6 (150%)	-1 (-9%)	6
BOROONDARA	2	2	5	0 (0%)	-3 (-60%)	4
BRIMBANK	11	4	6	7 (175%)	5 (83%)	6
CAMPASPE	6	2	2	4 (200%)	4 (200%)	3
CARDINIA	11	7	5	4 (57%)	6 (120%)	6
CASEY	4	11	7	-7 (-64%)	-3 (-43%)	12
CENTRAL GOLDFIELDS	2	8	3	-6 (-75%)	-1 (-33%)	5
DAREBIN	6	2	1	4 (200%)	5 (500%)	4
EAST GIPPSLAND	7	8	9	-1 (-13%)	-2 (-22%)	11
FRANKSTON	3	7	2	-4 (-57%)	1 (50%)	6
GEELONG	9	14	10	-5 (-36%)	-1 (-10%)	8
GLEN EIRA	5	4	5	1 (25%)	0 (0%)	5
GREATER DANDENONG	5	3	6	2 (67%)	-1 (-17%)	6
HOBSONS BAY	1	1	1	0 (0%)	0 (0%)	3
HORSHAM	7	4	4	3 (75%)	3 (75%)	3
HUME	5	4	8	1 (25%)	-3 (-38%)	7
KINGSTON	9	1	6	8 (800%)	3 (50%)	5
KNOX	2	1	5	1 (100%)	-3 (-60%)	4
LA TROBE	6	4	7	2 (50%)	-1 (-14%)	6
MACEDON RANGES	4	4	9	0 (0%)	-5 (-56%)	7
MANNINGHAM	2	0	7	2	-5 (-71%)	3
MARIBYRNONG	2	1	2	1 (100%)	0 (0%)	2
MAROONDAH	5	3	1	2 (67%)	4 (400%)	2
MELBOURNE	6	4	3	2 (50%)	3 (100%)	6
MELTON	6	6	5	0 (0%)	1 (20%)	5
MILDURA	1	5	4	-4 (-80%)	-3 (-75%)	5
MITCHELL	8	7	7	1 (14%)	1 (14%)	10
MONASH	2	6	7	-4 (-67%)	-5 (-71%)	6
MOONEE VALLEY	1	2	1	-1 (-50%)	0 (0%)	4
MOORABOOL	9	9	6	0 (0%)	3 (50%)	7
MORELAND	3	5	5	-2 (-40%)	-2 (-40%)	4
MORNINGTON PENINSULA	8	10	8	-2 (-20%)	0 (0%)	10
NILLUMBIK	4	2	0	2 (100%)	4	1
NORTHERN GRAMPIANS	3	3	3	0 (0%)	0 (0%)	4
PORT PHILLIP	1	2	3	-1 (-50%)	-2 (-67%)	2
SHEPPARTON	9	5	3	4 (80%)	6 (200%)	6
SOUTHERN GRAMPIANS	6	3	3	3 (100%)	3 (100%)	5
STONNINGTON	2	1	0	1 (100%)	2	1
SURF COAST	10	9	7	1 (11%)	3 (43%)	8
SWAN HILL	5	7	5	-2 (-29%)	0 (0%)	10
WANGARATTA	10	15	12	-5 (-33%)	-2 (-17%)	13
WARRNAMBOOL	4	7	8	-3 (-43%)	-4 (-50%)	7
WELLINGTON	2	9	1	-7 (-78%)	1 (100%)	6
WHITEHORSE	4	6	7	-2 (-33%)	-3 (-43%)	4
WHITTLESEA	5	6	14	-1 (-17%)	-9 (-64%)	7
WODONGA	3	3	6	0 (0%)	-3 (-50%)	4
WYNDHAM	4	7	8	-3 (-43%)	-4 (-50%)	6
YARRA	2	5	3	-3 (-60%)	-1 (-33%)	3
YARRA RANGES	11	6	6	5 (83%)	5 (83%)	10

Claims involving an acute hospital admission: 12 months to December (claim acceptance date)

Category	2011	2010	2009	2011 v 2010	2011 v 2009	5 Year Av
Overview						
Claims	5,787	5,565	5,416	222 (4%)	371 (7%)	5,589
Sex						
Male	3,332	3,178	3,210	154 (5%)	122 (4%)	3,248
Female	2,454	2,383	2,206	71 (3%)	248 (11%)	2,340
Roaduser						
Bicyclist	342	336	314	6 (2%)	28 (9%)	301
Driver	2,650	2,504	2,387	146 (6%)	263 (11%)	2,469
Motorcyclist	962	962	991	0 (0%)	-29 (-3%)	928
Passenger	1,084	1,068	1,022	16 (1%)	62 (6%)	1,126
Pedestrian	651	635	591	16 (3%)	60 (10%)	589
Tram/train	21	25	19	-4 (-16%)	2 (11%)	14
Location						
Melbourne	3,899	3,741	3,385	158 (4%)	514 (15%)	3,696
Rural Victoria	1,822	1,801	1,685	21 (1%)	137 (8%)	1,717
Agegroup						
0-4	53	51	43	2 (4%)	10 (23%)	51
5-15	202	223	195	-21 (-9%)	7 (4%)	225
16-17	125	138	156	-13 (-9%)	-31 (-20%)	163
18-20	553	546	592	7 (1%)	-39 (-7%)	600
21-25	736	662	685	74 (11%)	51 (7%)	725
26-29	418	434	425	-16 (-4%)	-7 (-2%)	434
30-39	909	873	937	36 (4%)	-28 (-3%)	946
40-49	878	826	816	52 (6%)	62 (8%)	816
50-59	712	701	590	11 (2%)	122 (21%)	626
60-69	527	472	384	55 (12%)	143 (37%)	419
70+	674	639	593	35 (5%)	81 (14%)	584
Alctime						
High (Melb)	1,814	1,657	1,593	157 (9%)	221 (14%)	1,692
High (Rural)	791	798	783	-7 (-1%)	8 (1%)	751
High (Vic)	2,632	2,462	2,559	170 (7%)	73 (3%)	2,546
Low (Melb)	2,085	2,084	1,792	1 (0%)	293 (16%)	2,004
Low (Rural)	1,031	1,003	902	28 (3%)	129 (14%)	966
Low (Vic)	3,155	3,103	2,857	52 (2%)	298 (10%)	3,043
Accident Type						
Intersection						
Adjacent direction	905	846	840	59 (7%)	65 (8%)	846
Opposing direction	464	451	438	13 (3%)	26 (6%)	439
Mid-block/other						
Head on	358	317	306	41 (13%)	52 (17%)	318
Same direction	946	919	745	27 (3%)	201 (27%)	782
Manoeuvre/o'taking	323	340	306	-17 (-5%)	17 (6%)	306
On path	190	216	214	-26 (-12%)	-24 (-11%)	199
Single vehicle	1,635	1,578	1,652	57 (4%)	-17 (-1%)	1,660
Other (incl peds)	966	898	913	68 (8%)	53 (6%)	810

Note: excludes rejected claims and claims for interstate crashes

Claims involving an acute hospital admission: 12 months to December (claim acceptance date)

Category	2011	2010	2009	2011 v 2010		2011 v 2009		5 Year Av
Police Service Area (based on Local Government Area (see p.13))								
BALLARAT	102	90	81	12	(13%)	21	(26%)	78
BANYULE	54	67	53	-13	(-19%)	1	(2%)	66
BASS COAST	88	78	66	10	(13%)	22	(33%)	84
BAW BAW	66	47	39	19	(40%)	27	(69%)	46
BENALLA	102	113	86	-11	(-10%)	16	(19%)	98
BENDIGO	101	88	75	13	(15%)	26	(35%)	77
BOROONDARA	137	151	127	-14	(-9%)	10	(8%)	138
BRIMBANK	166	100	127	66	(66%)	39	(31%)	136
CAMPASPE	33	43	42	-10	(-23%)	-9	(-21%)	39
CARDINIA	101	99	77	2	(2%)	24	(31%)	84
CASEY	241	237	211	4	(2%)	30	(14%)	228
CENTRAL GOLDFIELDS	6	8	11	-2	(-25%)	-5	(-45%)	13
DAREBIN	95	116	101	-21	(-18%)	-6	(-6%)	108
EAST GIPPSLAND	68	57	50	11	(19%)	18	(36%)	54
FRANKSTON	149	153	125	-4	(-3%)	24	(19%)	134
GEELONG	233	248	227	-15	(-6%)	6	(3%)	234
GLEN EIRA	166	182	154	-16	(-9%)	12	(8%)	164
GREATER DANDENONG	213	190	140	23	(12%)	73	(52%)	174
HOBSONS BAY	58	67	58	-9	(-13%)	0	(0%)	68
HORSHAM	38	35	24	3	(9%)	14	(58%)	34
HUME	140	149	161	-9	(-6%)	-21	(-13%)	157
KINGSTON	124	131	137	-7	(-5%)	-13	(-9%)	132
KNOX	121	124	107	-3	(-2%)	14	(13%)	130
LA TROBE	83	64	40	19	(30%)	43	(108%)	54
MACEDON RANGES	74	88	83	-14	(-16%)	-9	(-11%)	78
MANNINGHAM	65	71	57	-6	(-8%)	8	(14%)	71
MARIBYRNONG	102	58	72	44	(76%)	30	(42%)	72
MAROONDAH	82	74	59	8	(11%)	23	(39%)	69
MELBOURNE	223	217	190	6	(3%)	33	(17%)	189
MELTON	80	63	61	17	(27%)	19	(31%)	63
MILDURA	36	29	26	7	(24%)	10	(38%)	33
MITCHELL	74	93	68	-19	(-20%)	6	(9%)	76
MONASH	161	165	159	-4	(-2%)	2	(1%)	169
MOONEE VALLEY	95	91	83	4	(4%)	12	(14%)	105
MOORABOOL	93	78	133	15	(19%)	-40	(-30%)	89
MORELAND	158	132	114	26	(20%)	44	(39%)	135
MORNINGTON PENINSULA	188	161	142	27	(17%)	46	(32%)	168
NILLUMBIK	45	36	26	9	(25%)	19	(73%)	32
NORTHERN GRAMPPIANS	38	27	27	11	(41%)	11	(41%)	36
PORT PHILLIP	125	91	113	34	(37%)	12	(11%)	124
SHEPPARTON	60	60	82	0	(0%)	-22	(-27%)	83
SOUTHERN GRAMPPIANS	45	43	35	2	(5%)	10	(29%)	39
STONNINGTON	133	118	106	15	(13%)	27	(25%)	113
SURF COAST	78	72	89	6	(8%)	-11	(-12%)	81
SWAN HILL	24	22	40	2	(9%)	-16	(-40%)	34
WANGARATTA	92	110	111	-18	(-16%)	-19	(-17%)	108
WARRNAMBOOL	96	113	74	-17	(-15%)	22	(30%)	79
WELLINGTON	88	63	79	25	(40%)	9	(11%)	63
WHITEHORSE	109	137	117	-28	(-20%)	-8	(-7%)	134
WHITTLESEA	104	134	113	-30	(-22%)	-9	(-8%)	118
WODONGA	50	73	51	-23	(-32%)	-1	(-2%)	60
WYNDHAM	163	105	106	58	(55%)	57	(54%)	116
YARRA	107	118	97	-11	(-9%)	10	(10%)	96
YARRA RANGES	194	204	192	-10	(-5%)	2	(1%)	203

Fatalities: Victorian monthly totals since 1951

Year	Jan	Feb	Mar	Apr	May	Jun	Jul	Aug	Sep	Oct	Nov	Dec	Totals
1951							61	59	52	38	29	41	
1952	45	40	54	61	54	69	67	55	44	44	31	20	584
1953	23	28	54	58	49	42	50	37	44	27	36	32	480
1954	44	42	28	60	55	36	63	33	25	52	30	41	509
1955	44	36	45	55	48	56	64	44	44	32	40	40	548
1956	34	48	51	67	53	65	71	47	39	39	44	48	606
1957	50	41	46	58	52	54	57	53	51	46	32	49	589
1958	50	38	42	58	54	41	54	53	57	40	57	52	596
1959	50	57	61	50	75	55	42	48	52	55	63	63	671
1960	49	53	57	76	70	70	67	62	61	77	52	66	760
1961	63	57	68	74	58	68	78	82	59	62	60	65	794
1962	65	41	76	78	72	80	70	77	62	53	64	70	808
1963	67	56	65	85	66	68	77	55	55	58	61	67	780
1964	73	71	78	71	83	89	80	89	67	66	62	75	904
1965	63	64	86	88	80	87	79	69	81	77	68	87	929
1966	75	59	75	103	74	86	87	80	75	66	90	85	955
1967	61	79	91	97	81	71	59	67	70	68	60	83	887
1968	70	78	86	78	73	76	73	77	72	80	81	105	949
1969	79	68	79	87	86	77	87	83	87	83	94	101	1,011
1970	85	84	106	80	87	88	110	106	78	95	68	74	1,061
1971	83	75	77	68	76	86	86	72	78	73	74	76	923
1972	61	62	75	82	75	71	98	85	83	62	80	81	915
1973	75	75	95	85	64	66	61	85	89	88	66	86	935
1974	56	62	81	60	70	73	67	62	53	70	80	72	806
1975	67	65	87	73	97	94	57	75	69	66	71	89	910
1976	79	78	88	78	69	79	60	70	82	78	77	100	938
1977	65	71	89	79	65	79	70	91	68	74	96	107	954
1978	75	54	95	63	64	69	68	77	65	84	83	72	869
1979	63	60	86	75	45	64	66	75	69	79	72	93	847
1980	48	55	66	59	47	56	60	53	45	58	61	49	657
1981	69	60	58	61	74	65	61	63	68	71	59	57	766
1982	55	53	59	59	67	45	47	71	53	69	65	66	709
1983	42	59	53	63	62	61	65	51	59	43	54	52	664
1984	65	48	58	50	56	48	46	50	71	53	55	58	658
1985	56	47	50	65	75	50	51	50	58	61	56	64	683
1986	56	50	70	69	59	53	42	54	54	52	59	51	669
1987	62	43	57	52	63	59	62	49	62	61	55	80	705
1988	49	58	69	54	79	50	54	52	64	59	43	70	701
1989	76	65	80	59	67	73	52	65	82	50	41	66	776
1990	48	44	55	39	56	64	41	34	48	35	40	44	548
1991	45	39	70	30	34	29	44	47	41	36	35	53	503
1992	34	33	34	47	33	29	23	27	28	38	30	40	396
1993	27	40	37	39	44	33	33	27	34	39	43	40	436
1994	36	31	44	35	27	33	29	37	17	27	32	30	378
1995	38	35	26	33	34	41	27	34	34	32	38	46	418
1996	40	47	35	38	28	29	30	35	49	24	33	30	418
1997	36	25	30	30	40	22	39	26	26	29	39	35	377
1998	29	29	32	36	31	22	40	19	37	36	49	30	390
1999	32	31	35	35	34	24	35	26	28	38	29	37	384
2000	32	26	46	32	39	32	33	29	36	29	44	29	407
2001	44	30	31	32	31	41	34	37	35	51	41	37	444
2002	32	31	45	31	45	32	27	25	31	30	31	37	397
2003	21	41	36	28	31	28	20	23	23	24	24	31	330
2004	32	22	30	30	46	28	27	26	22	28	25	27	343
2005	33	27	47	21	29	23	30	25	25	33	17	36	346
2006	24	37	23	23	27	23	25	22	43	20	31	39	337
2007	23	23	32	25	26	28	28	20	23	37	26	41	332
2008	28	20	37	25	25	20	27	27	18	25	26	25	303
2009	31	18	23	32	19	30	19	21	14	28	21	34	290
2010	26	25	23	20	31	26	26	18	17	36	12	28	288
2011	18	20	34	31	30	24	25	14	12	22	30	27	287
2012	30	21	25	19	23	23							141
Ave	50	47	57	55	54	53	53	51	51	51	50	56	631
Max	85	84	106	103	97	94	110	106	89	95	96	107	1,061
Min	18	18	23	19	19	20	19	14	12	20	12	20	287

Fatalities by Week (2007 to 2012)

Week Ending	2007	2008	2009	2010	2011	2012	Cumulative 2012	% Change 2012-2011	12 Month Moving Total
1-Jan	3	1	3	1	2	1	1	-50%	286
8-Jan	2	8	11	6	1	3	4	33%	288
15-Jan	7	5	6	1	6	9	13	44%	291
22-Jan	5	4	2	9	4	7	20	54%	294
29-Jan	5	8	8	6	4	9	29	71%	299
5-Feb	7	5	1	9	8	4	33	32%	295
12-Feb	4	4	10	5	3	2	35	25%	294
19-Feb	10	4	3	8	5	11	46	39%	300
26-Feb	3	8	5	4	4	4	50	35%	300
4-Mar	9	8	2	6	8	1	51	13%	293
11-Mar	9	5	6	5	6	4	55	8%	291
18-Mar	3	13	3	4	9	12	67	12%	294
25-Mar	8	7	7	8	8	4	71	4%	290
1-Apr	4	10	8	5	5	7	78	7%	292
8-Apr	11	3	5	4	12	6	84	-1%	286
15-Apr	4	6	8	6	5	2	86	-4%	283
22-Apr	3	6	10	4	6	6	92	-4%	283
29-Apr	7	5	6	4	7	2	94	-9%	278
6-May	3	7	7	3	4	10	104	-3%	284
13-May	6	4	4	9	7	2	106	-7%	279
20-May	8	8	1	6	11	5	111	-11%	273
27-May	6	6	3	12	4	5	116	-10%	274
3-Jun	15	2	7	2	5	4	120	-10%	273
10-Jun	3	6	6	7	9	6	126	-12%	270
17-Jun	4	4	8	8	3	4	130	-11%	271
24-Jun	7	7	6	5	6	7	137	-10%	272
1-Jul	2	5	7	8	5	5	142	-10%	272
8-Jul	9	10	9	4	10	4	146	-13%	266
15-Jul	7	2	2	3	5	4	150	-13%	265
22-Jul	6	3	5	5	8	5	155	-14%	262
29-Jul	5	8	3	10	2	5	160	-12%	265
5-Aug	2	8	3	7	4	3	163	-12%	264
12-Aug	2	6	11	3	6	4	167	-13%	262
19-Aug	4	3	4	5	1				
26-Aug	11	7	1	2	1				
2-Sep	3	5	4	3	3				
9-Sep	7	3	1	4	3				
16-Sep	4	6	7	1	3				
23-Sep	8	6	2	6	1				
30-Sep	5	6	2	4	5				
7-Oct	12	8	2	12	7				
14-Oct	6	4	8	7	2				
21-Oct	8	4	9	8	3				
28-Oct	6	4	8	6	7				
4-Nov	6	4	4	5	5				
11-Nov	7	7	6	0	12				
18-Nov	4	10	6	3	8				
25-Nov	7	3	4	3	5				
2-Dec	8	4	5	7	7				
9-Dec	16	9	5	6	6				
16-Dec	5	3	11	6	7				
23-Dec	8	9	10	9	6				
31-Dec	8	2	5	4	3				
Total	332	303	290	288	287				

Alcohol Related Fatalities

NOTE: UPDATES TO THIS DATA WERE NOT AVAILABLE AT TIME OF REPORT

BAC Fatalities (12 months to April 2010)

- 24% of fatally injured and tested drivers and riders had a BAC at 0.05 g/100ml or over (41 of 172) compared to 25% over the previous 12 month period (43 of 169).
- In Melbourne, 21 drivers/riders fatally injured and tested were at or over 0.05, with 38% of these having a BAC in excess of 0.15 g/100ml. Across rural Victoria, 20 drivers/riders fatally injured and tested were at or over 0.05, with 65% of these having a BAC over 0.15.
- Of the 41 drivers and riders fatally injured and tested at or over 0.05, 15% (6) were aged under 21, 39% (16) were aged 21-29, 27% (11) were aged 30-39 and 20% (8) were aged 40 years and over. In the previous year (43 fatally injured) the corresponding figures were 19% (8), 28% (12), 19% (8) and 35% (15), respectively.

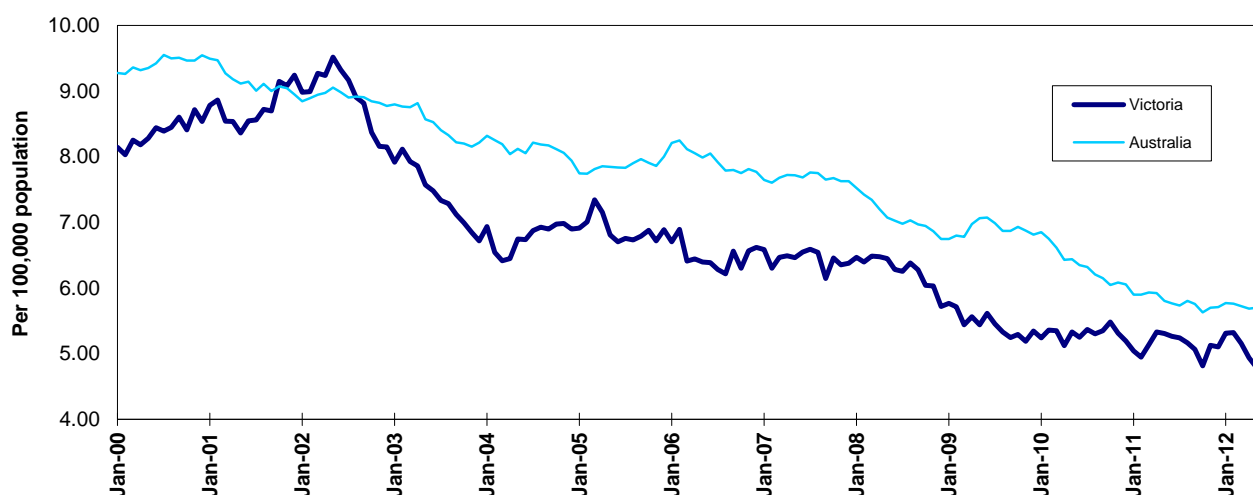
Category	2010	2009	2008	2010 v 2009	2010 v 2008	5 Year Av
Melbourne Drivers and Riders						
<0.05	55	63	63	-8	(-13%)	62
[a] at 0.05 & above	21	17	25	4	(24%)	21
% at 0.05 & above	(28%)	(21%)	(28%)			(25%)
[b] >0.15	8	10	12	-2	(-20%)	9
%>0.15	(11%)	(13%)	(14%)			(11%)
[b] as a % of [a]	(38%)	(59%)	(48%)			(43%)
BAC Unknown	5	3	1	2	(67%)	3
Country Drivers and Riders						
<0.05	76	63	90	13	(21%)	78
[a] at 0.05 & above	20	26	32	-6	(-23%)	26
% at 0.05 & above	(21%)	(29%)	(26%)			(25%)
[b] >0.15	13	17	20	-4	(-24%)	17
%>0.15	(14%)	(19%)	(16%)			(16%)
[b] as a % of [a]	(65%)	(65%)	(63%)			(64%)
BAC Unknown	7	2	1	5	(250%)	5
Victorian Total Drivers and Riders						
<0.05	131	126	153	5	(4%)	140
[a] at 0.05 & above	41	43	57	-2	(-5%)	47
% at 0.05 & above	(24%)	(25%)	(27%)			(25%)
[b] >0.15	21	27	32	-6	(-22%)	26
%>0.15	(12%)	(16%)	(15%)			(14%)
[b] as a % of [a]	(51%)	(63%)	(56%)			(54%)
BAC Unknown	12	5	2	7	(140%)	7
Victorian Total Pedestrians						
<0.05	32	35	38	-3	(-9%)	33
[a] at 0.05 & above	8	21	9	-13	(-62%)	14
% at 0.05 & above	(20%)	(38%)	(19%)			(30%)
[b] >0.15	3	10	8	-7	(-70%)	9
%>0.15	(8%)	(18%)	(17%)			(19%)
[b] as a % of [a]	(38%)	(48%)	(89%)			(62%)
BAC Unknown	6	4	2	2	(50%)	4

The National Picture

State	Fatalities (12 months to June)					2012 v 2011	
	2012	2011	2010	2009			
NSW	404	357	445	432	47	(13%)	
VIC	271	294	288	301	-23	(-8%)	
QLD	279	251	269	351	28	(11%)	
SA	91	111	118	128	-20	(-18%)	
WA	181	197	184	199	-16	(-8%)	
TAS	19	32	44	50	-13	(-41%)	
NT	53	44	35	56	9	(20%)	
ACT	5	10	20	13	-5	(-50%)	
AUST TOTAL	1,303	1,296	1,403	1,530	7	(1%)	
AUST minus VIC	1,032	1,002	1,115	1,229	30	(3%)	

State	Fatalities per 10,000 registered vehicles (12 months to June)			Fatalities per 100,000 population (12 months to June)		
	2012	2011	2010	2012	2011	2010
NSW	0.83	0.75	0.96	5.51	4.91	6.21
VIC	0.63	0.70	0.70	4.79	5.26	5.25
QLD	0.81	0.74	0.81	6.05	5.52	6.03
SA	0.71	0.88	0.96	5.47	6.72	7.22
WA	0.92	1.04	0.99	7.63	8.49	8.12
TAS	0.44	0.77	1.08	3.71	6.29	8.71
NT	3.79	3.17	2.63	23.00	19.14	15.40
ACT	0.19	0.39	0.79	1.42	2.80	5.63
AUST TOTAL	0.78	0.79	0.88	5.73	5.76	6.35
AUST minus VIC	0.83	0.82	0.94	6.01	5.91	6.71

Victoria v Australia – 12 Month Moving Fatality Rate



Booze-Bus Random Breath Testing*

12 months to April 2012 (monthly totals)

	2011						2012					
	May	Jun	Jul	Aug	Sep	Oct	Nov	Dec	Jan	Feb	Mar	Apr
Melbourne							84,800	97,551	86,442	83,625	87,082	89,651
Country							13,085	19,863	9,042	10,529	12,033	7,426
Vic Total							97,885	117,414	95,484	94,154	99,115	97,077

12 months to April 2012 vs previous 12 months

	2012	2011	2010	2012 v 2011		2011 v 2009	
Melbourne	1,039,668	1,001,833	1,102,307	37,835	(4%)	-62,639	(-6%)
Country	153,033	181,748	227,182	-28,715	(-16%)	-74,149	(-33%)
Vic Total	1,192,701	1,183,581	1,329,489	9,120	(1%)	-136,788	(-10%)

*Due to police industrial action, reliable random breath testing data is not available from May to October 2011. For the rolling 12 month totals, 2010 data has been used as a substitute in the relevant months.

Mobile Safety Camera Data

Speed Infringements Issued from Mobile Cameras (monthly totals)

Monthly Average = 47,989

2011	2012											
	Jul	Aug	Sep	Oct	Nov	Dec	Jan	Feb	Mar	Apr	May	Jun
48,508	47,459	45,614	13,049	88,160	44,408	54,857	43,904	50,948	42,935	50,292	45,729	

Excessive Speed Infringements Issued from Mobile Cameras (monthly totals)

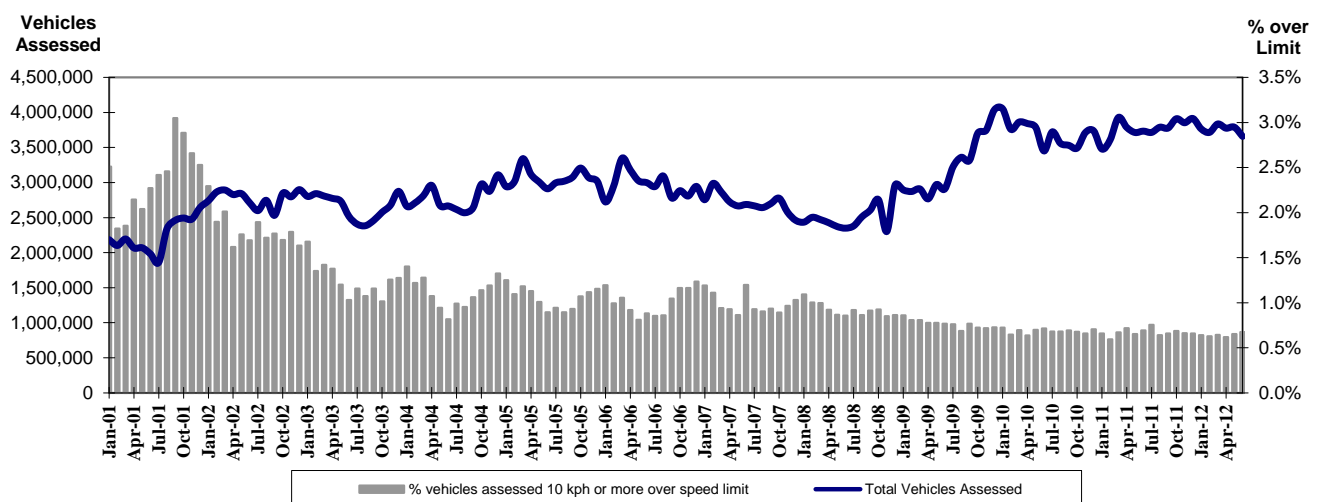
Monthly Average = 414

2011	2012											
	Jul	Aug	Sep	Oct	Nov	Dec	Jan	Feb	Mar	Apr	May	Jun
460	467	421	176	658	450	487	340	435	374	360	341	

Notes: An ESI is defined as 25km/h over the speed limit except in a 110km/h zone where it is 20km/h over the limit.

Note that the Victoria Police Traffic Camera Office was not approving infringements during police industrial action between 30th September and 24th of October. This resulted in a backlog of infringements which were subsequently processed in November. The issuing of "on-the-spot" fine numbers also dropped during the industrial action.

Mobile Safety Cameras – Vehicles assessed and percentage of vehicles assessed 10km/h or more over speed limit per month



Explanations and References

Hi-AlcTime is those times of the day and week (*shaded* in the table below) when casualty crashes are ten times more likely to involve alcohol than casualty crashes at other (Lo-AlcTime) times.

	12am - 6am	6am - 8am	8am - 10am	10am - 2pm	2pm - 4pm	4pm - 6pm	6pm - 12pm
Monday							
Tuesday							
Wednesday							
Thursday							
Friday							
Saturday							
Sunday							

Police Service Areas align with Local Government Areas. Most Police Service Areas are equivalent to a single Local Government Area, while the remainder comprise two or three Local Government Areas.

Police Service Area	Local Government Area(s)	Police Service Area	Local Government Area(s)
BALLARAT	BALLARAT, PYRENEES	MAROONDAH	MAROONDAH
BANYULE	BANYULE	MELBOURNE	MELBOURNE
BASS COAST	BASS COAST, SOUTH GIPPSLAND	MELTON	MELTON
BAW BAW	BAWBAW	MILDURA	MILDURA
BENALLA	BENALLA, MANSFIELD, MURRINDINDI	MITCHELL	MITCHELL, STRATHBOGIE
BENDIGO	GREATER BENDIGO	MONASH	MONASH
BOROONDARA	BOROONDARA	MOONEE VALLEY	MOONEE VALLEY
BRIMBANK	BRIMBANK	MOORABOOL	GOLDEN PLAINS, HEPBURN, MOORABOOL
CAMPASPE	CAMPASPE	MORELAND	MORELAND
CARDINIA	CARDINIA	MORNINGTON PENINSULA	MORNINGTON PENINSULA
CASEY	CASEY	NILLUMBIK	NILLUMBIK
CENTRAL GOLDFIELDS	CENTRAL GOLDFIELDS, LODDON	NORTHERN GRAMPIANS	ARARAT, NORTHERN GRAMPIANS, YARRIAMBIACK
GREATER DANDENONG	GREATER DANDENONG	PORT PHILLIP	PORT PHILLIP
DAREBIN	DAREBIN	SHEPPARTON	GREATER SHEPPARTON
EAST GIPPSLAND	EAST GIPPSLAND	SOUTHERN GRAMPIANS	GLENELG, SOUTHERN GRAMPIANS
FRANKSTON	FRANKSTON	STONNINGTON	STONNINGTON
GEELONG	GREATER GEELONG, QUEENSCLIFF	SURFCOAST	SURFCOAST, COLAC OTWAY
GLENEIRA	GLENEIRA, BAYSIDE	SWANHILL	BULOKE, GANNAWARRA, SWAN HILL
HOBSONS BAY	HOBSONSBAY	WANGARATTA	ALPINE, WANGARATTA
HORSHAM	HINDMARSH, HORSHAM, WESTWIMMERA	WARRNAMBOOL	CORANGAMITE, MOYNE, WARRNAMBOOL
HUME	HUME	WELLINGTON	WELLINGTON
KINGSTON	KINGSTON	WHITEHORSE	WHITEHORSE
KNOX	KNOX	WHITTLESEA	WHITTLESEA
LATROBE	LATROBE	WODONGA	INDIGO, TOWONG, WODONGA
MACEDON RANGES	MOUNT ALEXANDER, MACEDON RANGES	WYNDHAM	WYNDHAM
MANNINGHAM	MANNINGHAM	YARRA	YARRA
MARIBYRNONG	MARIBYRNONG	YARRA RANGES	YARRA RANGES

Useful Internet Sites

TAC Sites

- TAC Safety (Road Safety) www.tacsafety.com.au
- TAC How safe is your car www.howsafeisyourcar.com.au
- TAC Learners Log www.learnerslog.com.au
- TAC Motorcycle Safety Website www.spokes.com.au
- TAC Corporate site www.tac.vic.gov.au

Victorian Sites:

- VicRoads www.vicroads.vic.gov.au
- Victoria Police www.police.vic.gov.au
- Parliamentary Road Safety Committee www.parliament.vic.gov.au/rsc/
- ARRB Transport Research www.arrb.com.au
- RACV www.racv.com.au
- Monash University Accident Research Centre www.monash.edu.au/muarc
- Roadsafe www.roadsafe.org.au

National and Interstate Sites:

- Australian Transport Safety Bureau www.atsb.gov.au
- Roads and Traffic Authority (NSW) www.rta.nsw.gov.au
- Queensland Transport - Road Safety transport.qld.gov.au/Home/Safety/Road
- Department of Transport (SA) www.transport.sa.gov.au/index.htm
- Main Roads Western Australia - Road Safety www.mrwa.wa.gov.au

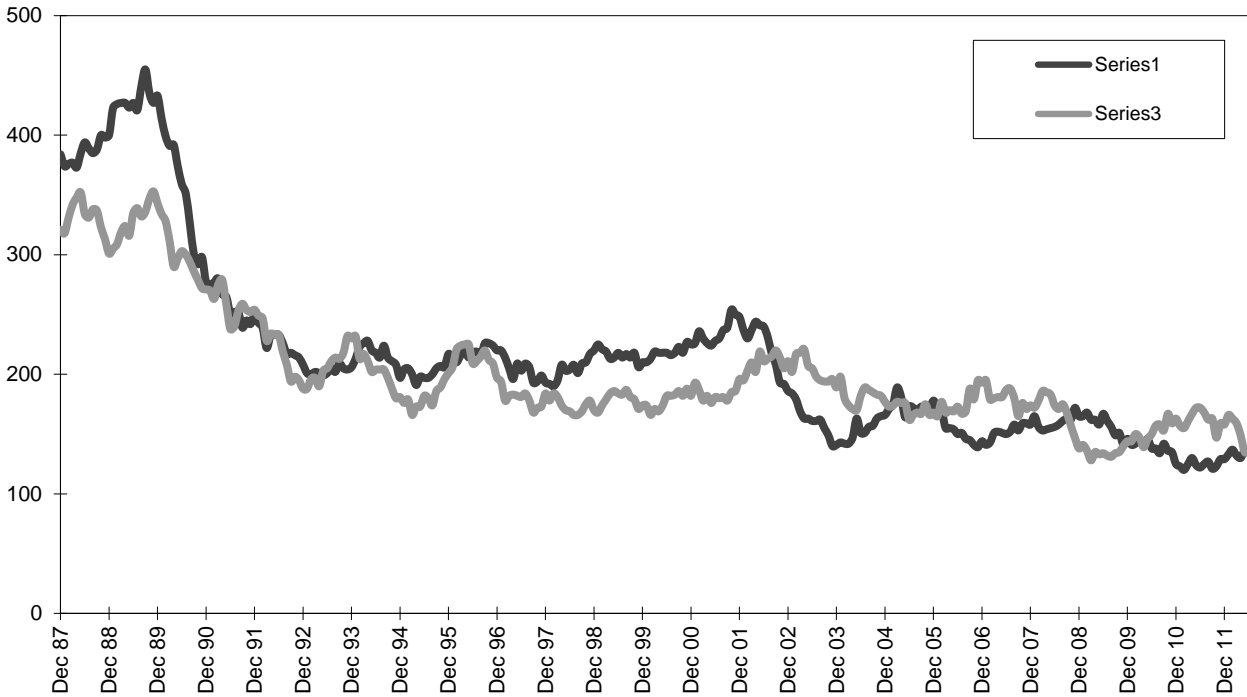
International Sites:

- National Highway Traffic Safety Admin (USA) www.nhtsa.dot.gov
- Swedish Road and Transport Institute (VTI) www.vti.se
- SWOV Institute for Road Safety Research www.swov.nl

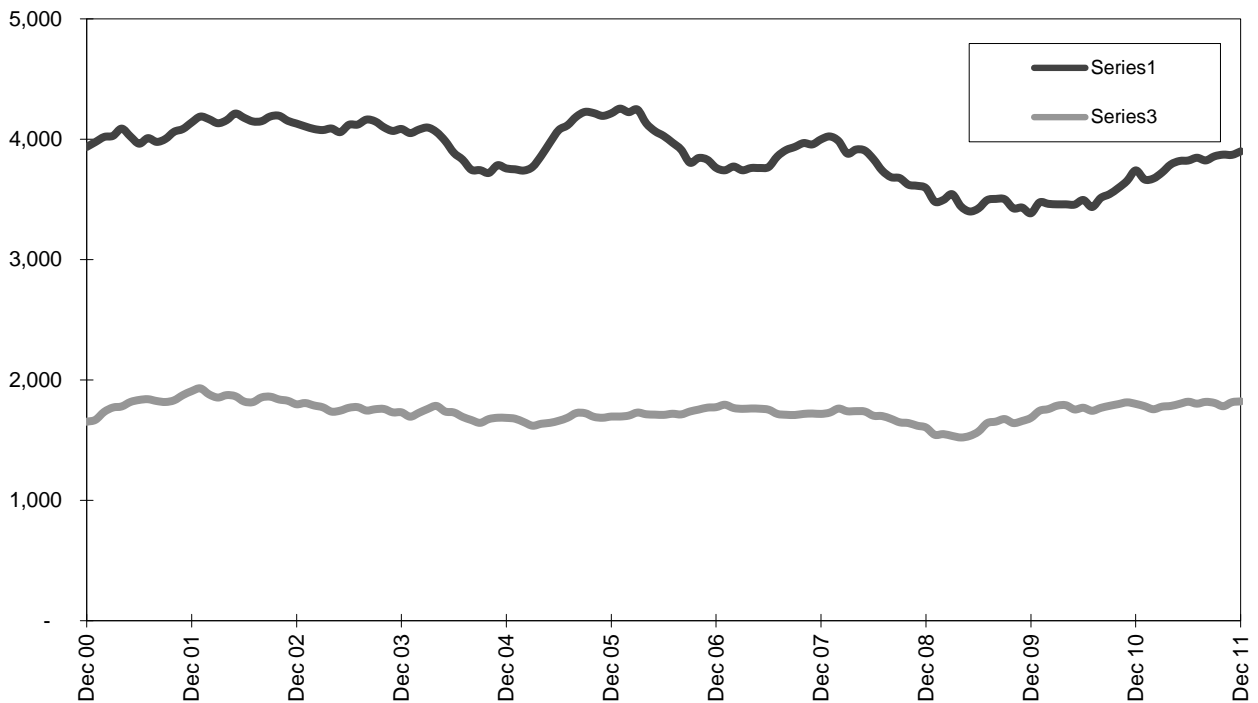
Related Sites:

- Australian Drug Foundation www.adf.org.au
- Amy Gillett Foundation www.amygillett.org.au

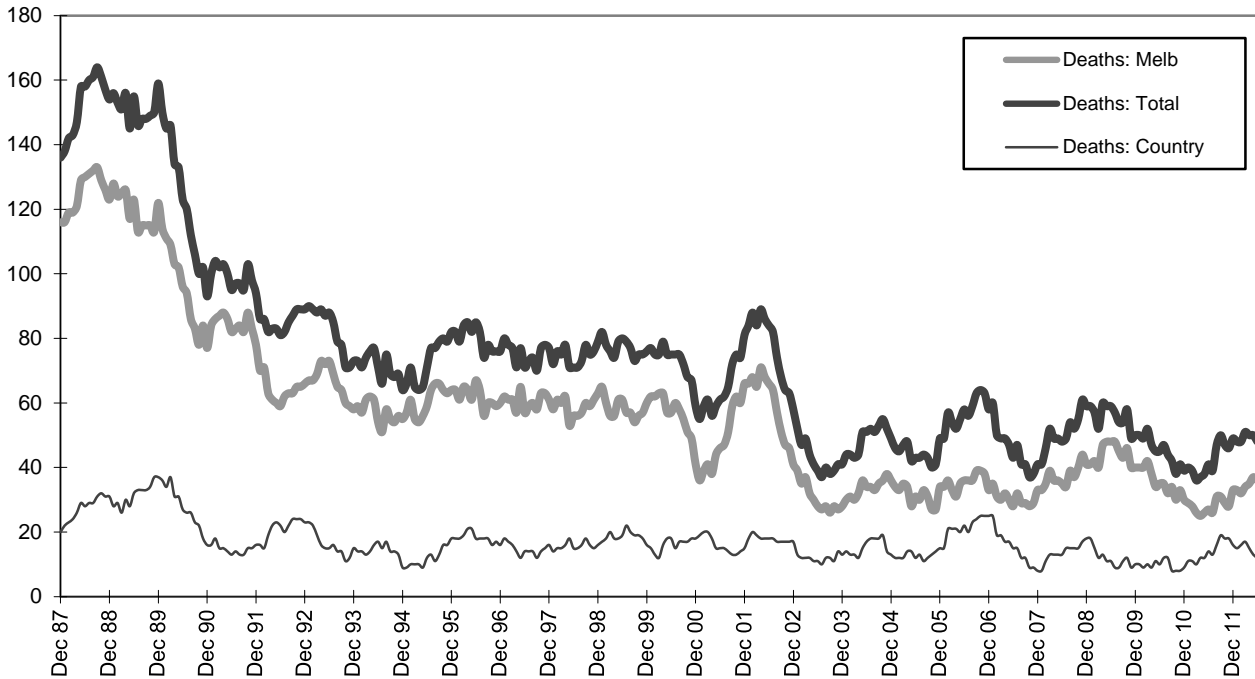
Graph 1a – Melbourne/country fatalities



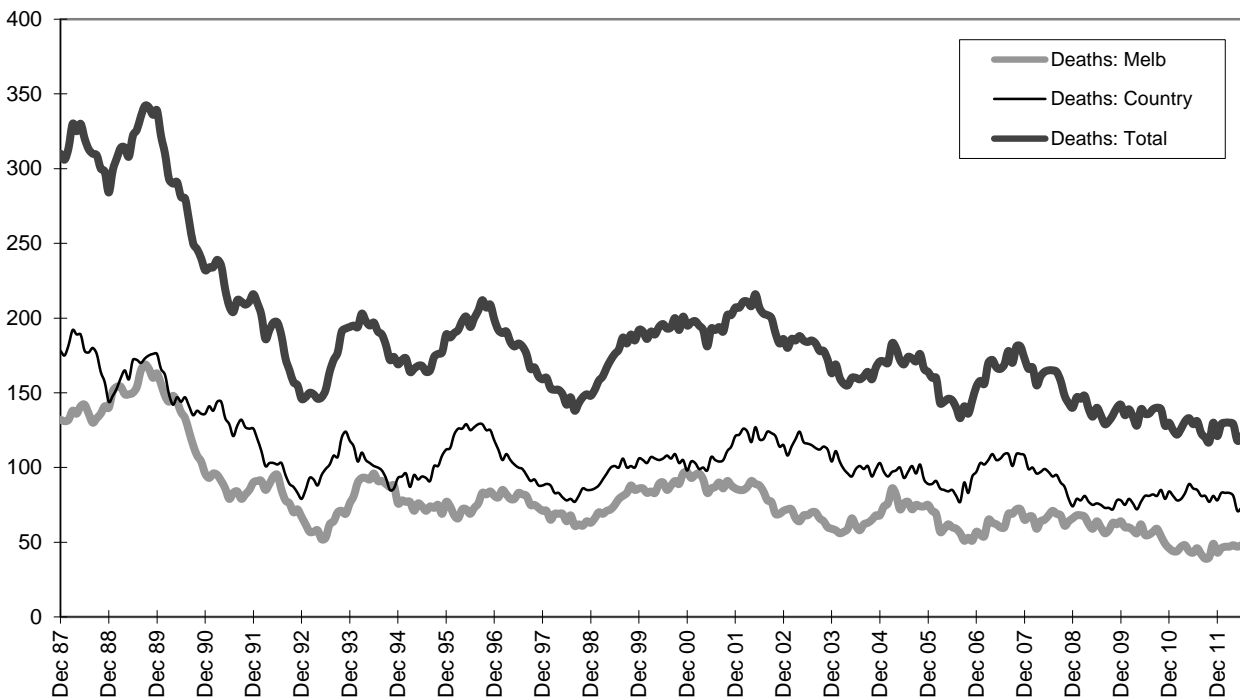
Graph 1b – Melbourne/country Claims involving an acute hospital admission



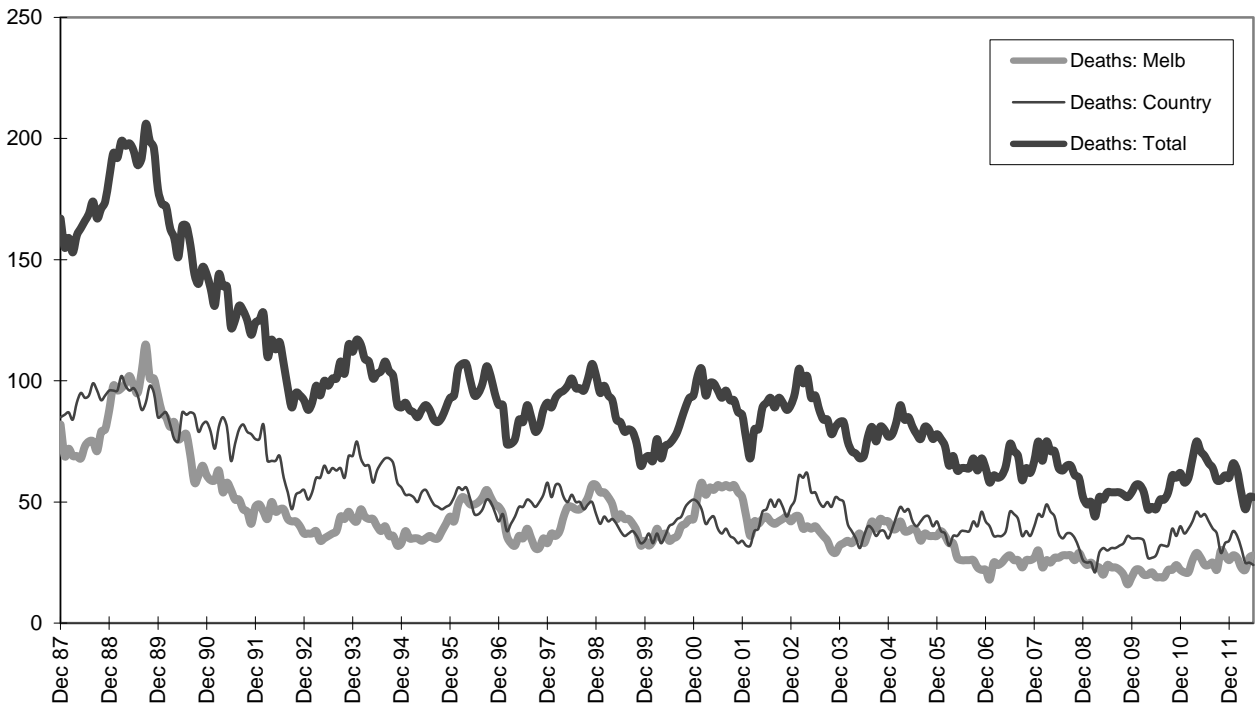
Graph 2a – Pedestrian fatalities (Melbourne/country)



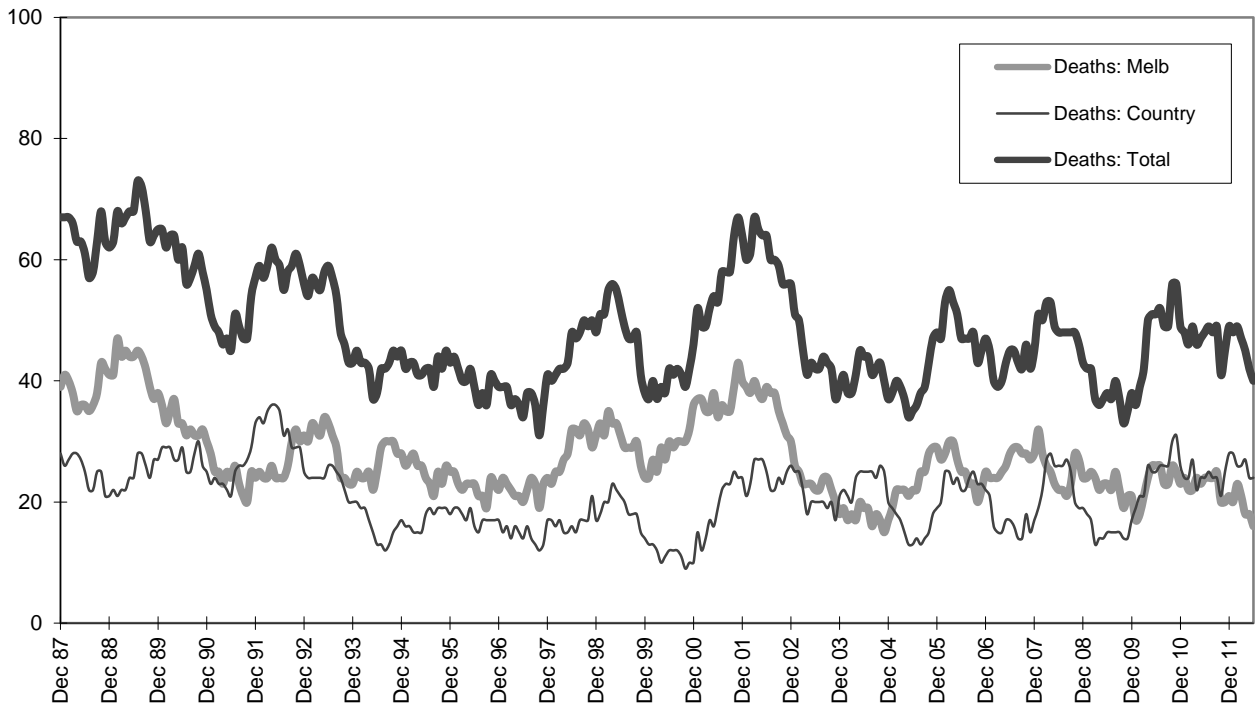
Graph 2b – Driver fatalities (Melbourne/country)



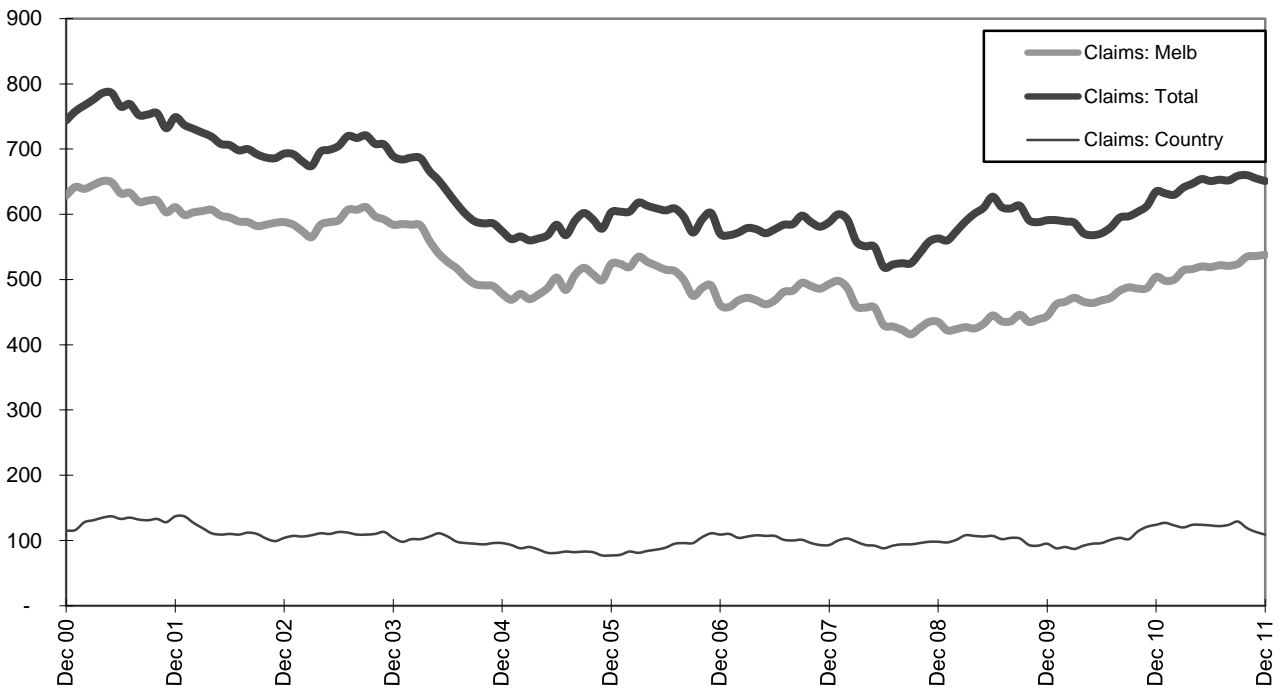
Graph 2c – Passenger fatalities (Melbourne/country)



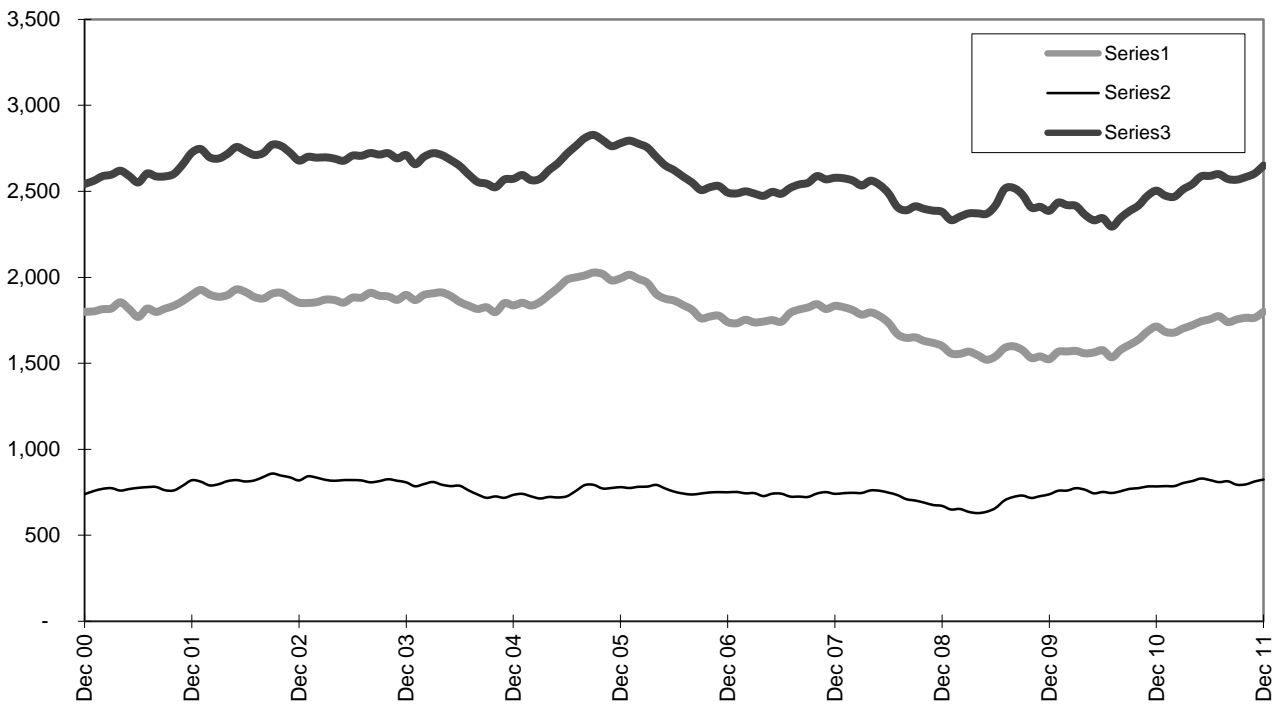
Graph 2d –Motorcyclist fatalities (Melbourne/country)



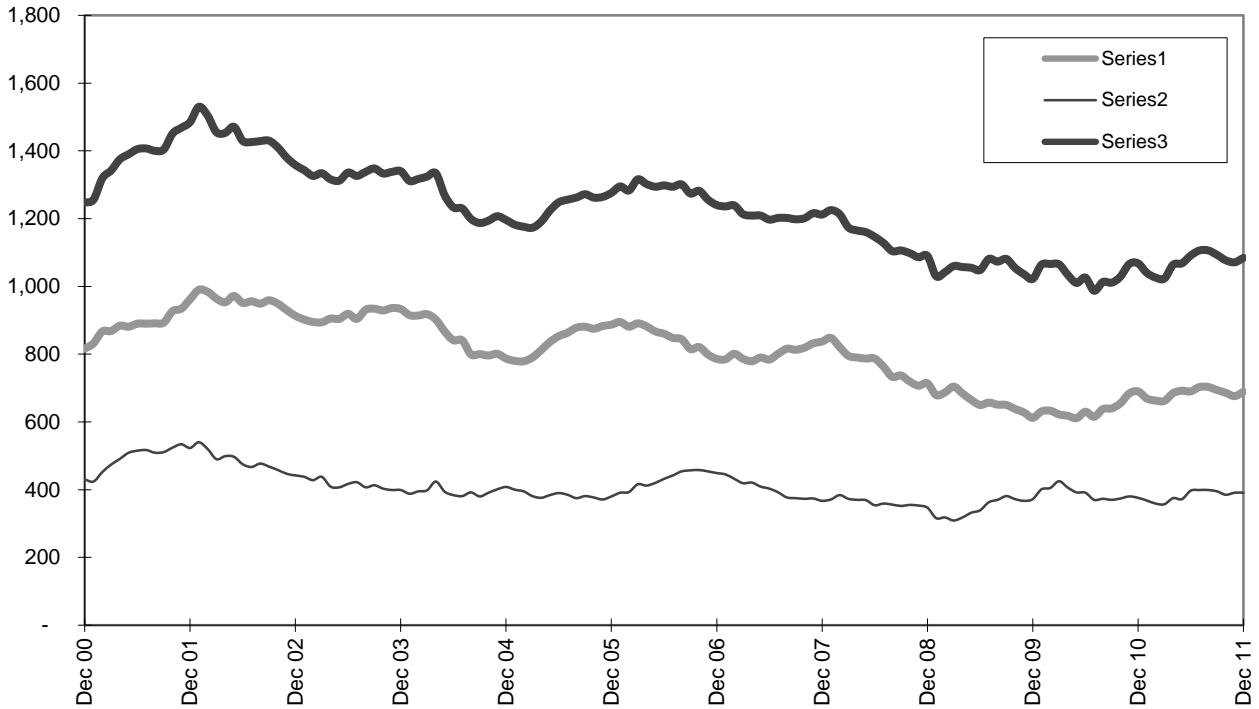
Graph 3a – Pedestrian Claims involving an acute hospital admission (Melbourne/country)



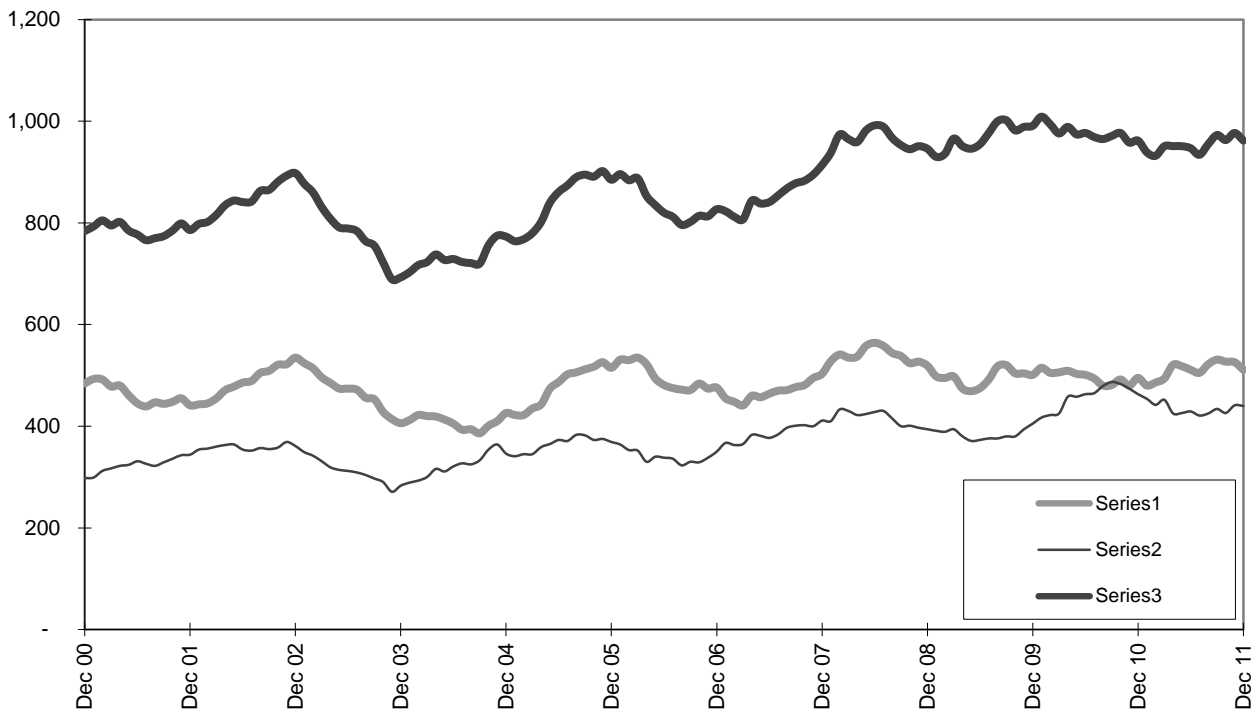
Graph 3b – Driver Claims involving an acute hospital admission (Melbourne/country)



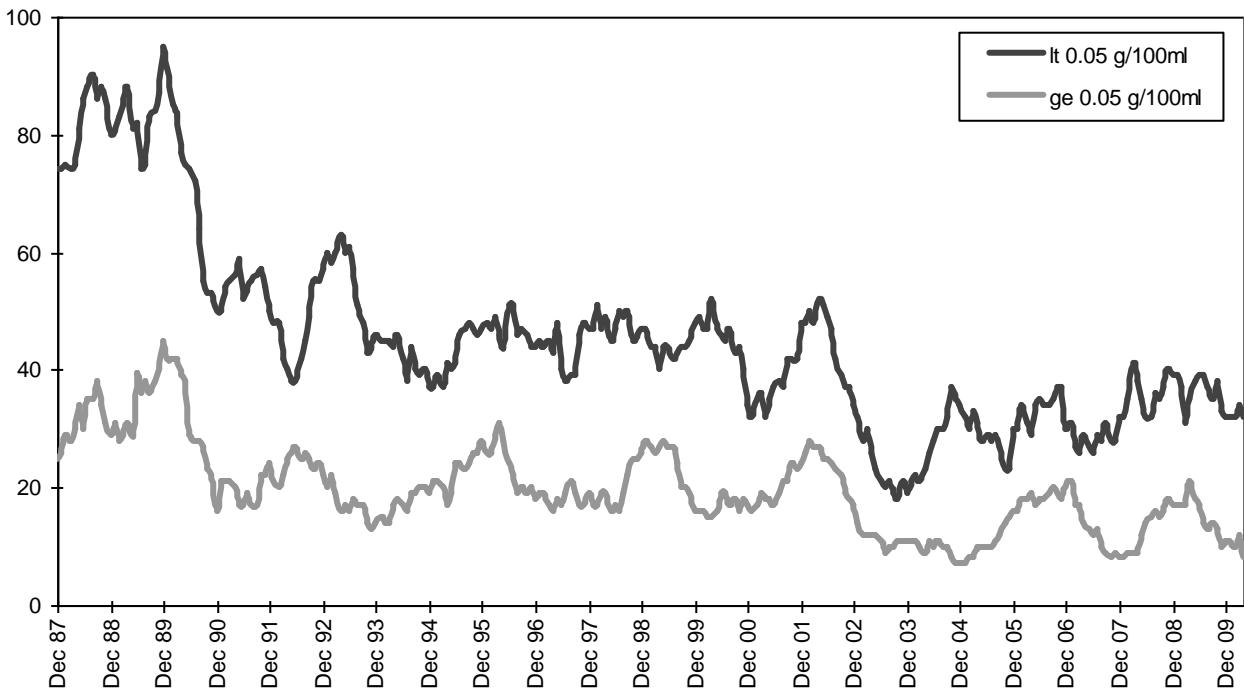
Graph 3c – Passenger Claims involving an acute hospital admission (Melbourne/country)



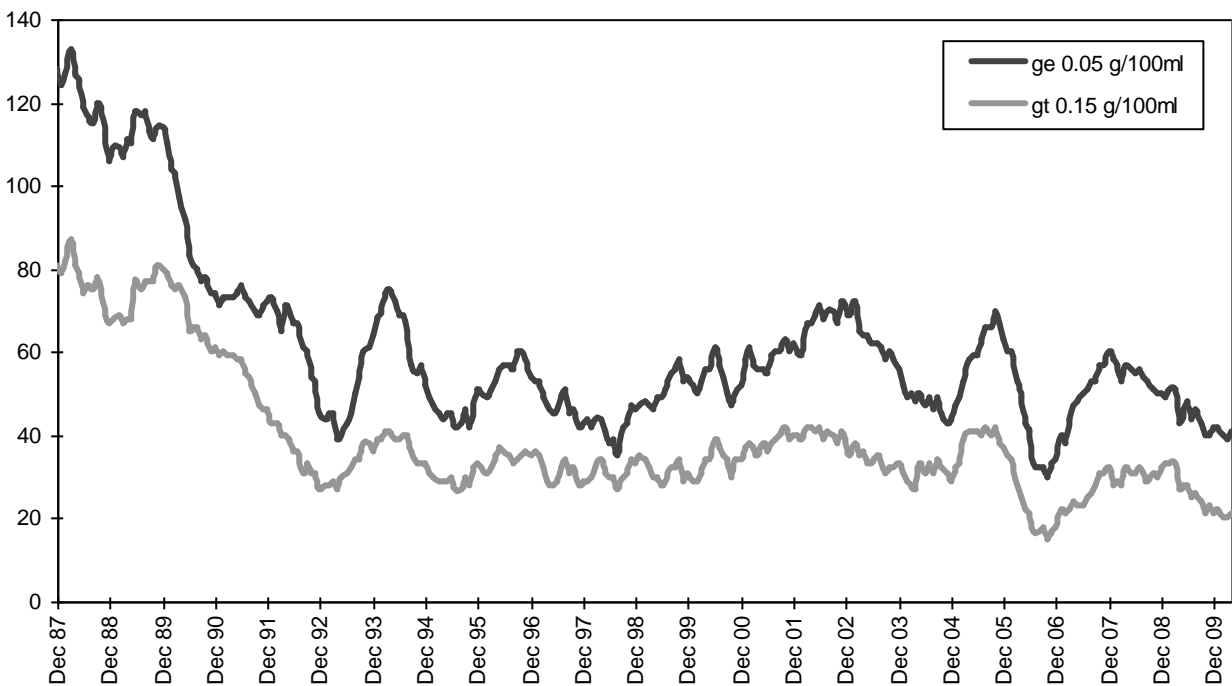
Graph 3d –Motorcyclist Claims involving an acute hospital admission (Melbourne/country)



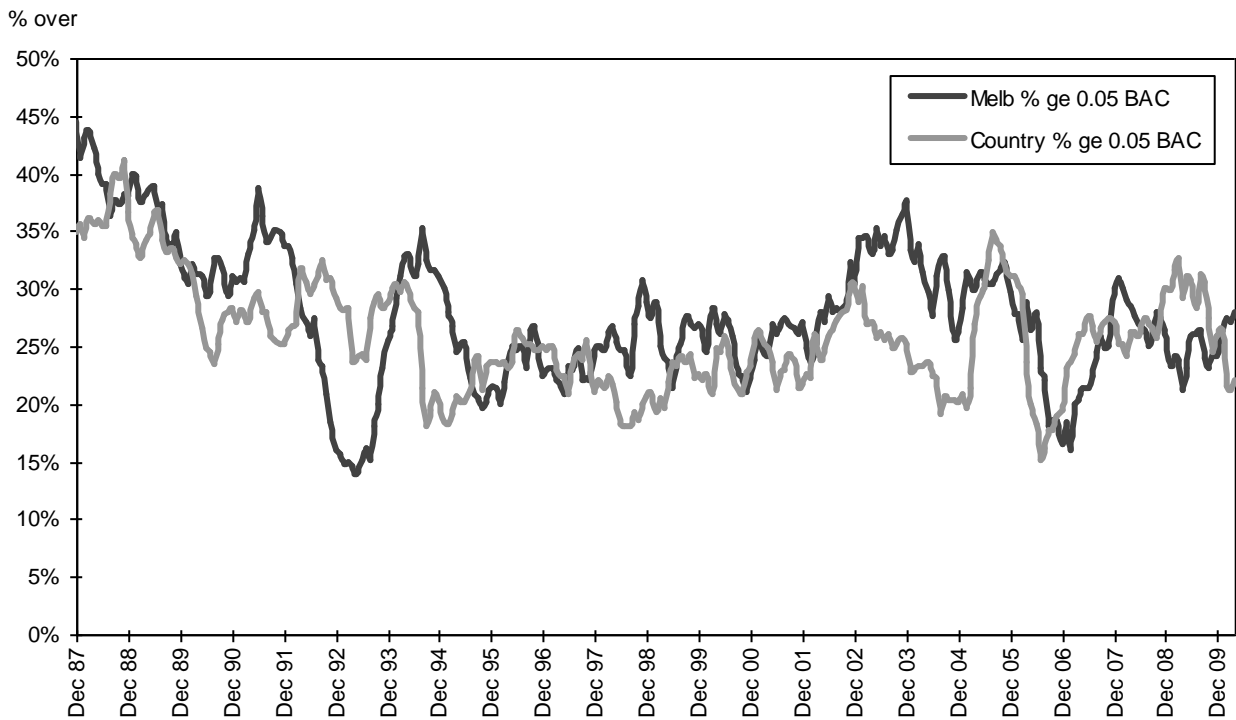
Graph 4a – Pedestrian fatalities by BAC



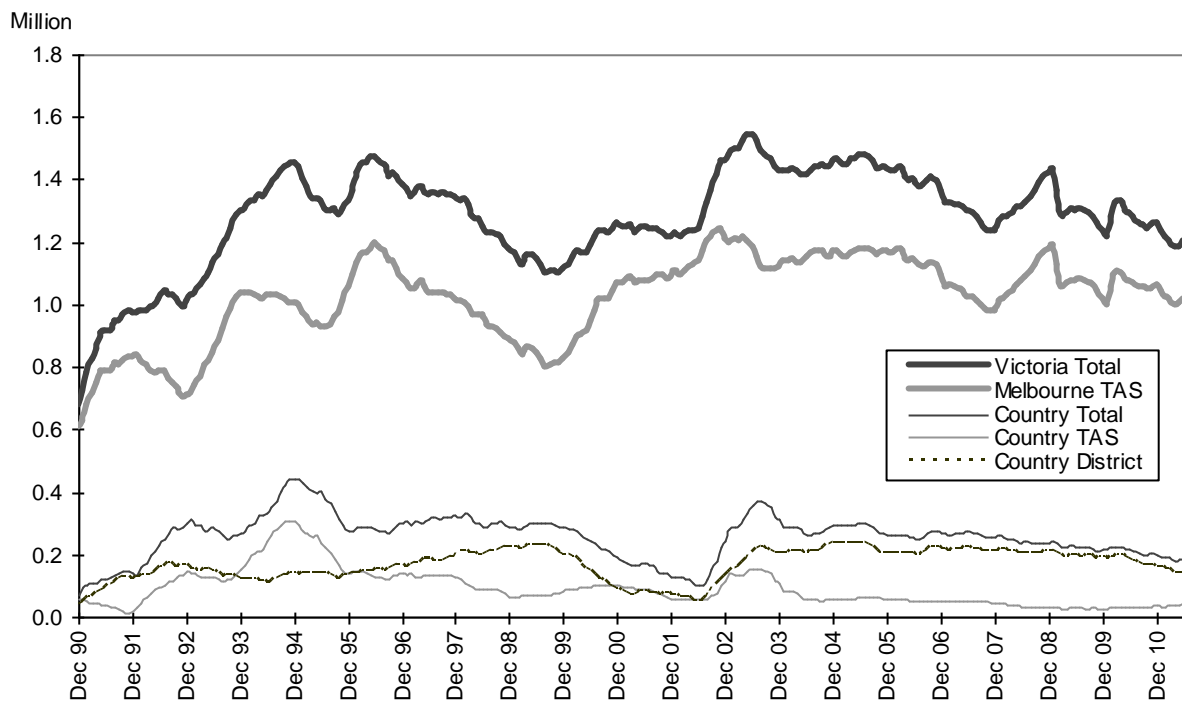
Graph 4b – Driver/rider fatalities by BAC



Graph 4c – Proportion of driver/rider fatalities with a BAC ge 0.05



Graph 5a – Booze-Bus RBTs



Graph 5b – RBT: Percentage positive readings

