

Contents

Status Report.....	4
Fatalities.....	4
Claims involving an acute hospital admission*	5
Fatalities: 12 months to November 2015	6
Claims involving acute hospitalisation over 14 days: 12 months to May 2015 (claim acceptance date).....	8
Claims involving an acute hospital admission: 12 months to May 2015 (claim acceptance date)	10
Fatalities: Victorian monthly totals since 1951	12
Fatalities by Week (2009 to 2015).....	13
The National Picture	14
Booze-Bus Random Breath Testing	15
Mobile Safety Camera Data	15
Explanations and References	16
Useful Internet Sites	17
Figures	18

Note about the data in this report

- All data provided in this report is the data most recently available at time of production. Fatalities, breath-test data and safety camera data are updated to the end of report month. A 6-month lag applies to TAC claims data.
- Reported data will have one extra day of exposure for leap years.
- Data is subject to revision as additional information about known accidents/claims is received, and as new accident/claim reports are received and processed.

*An acute hospital admission refers to a hospital admission that occurred within 7 days of accident.

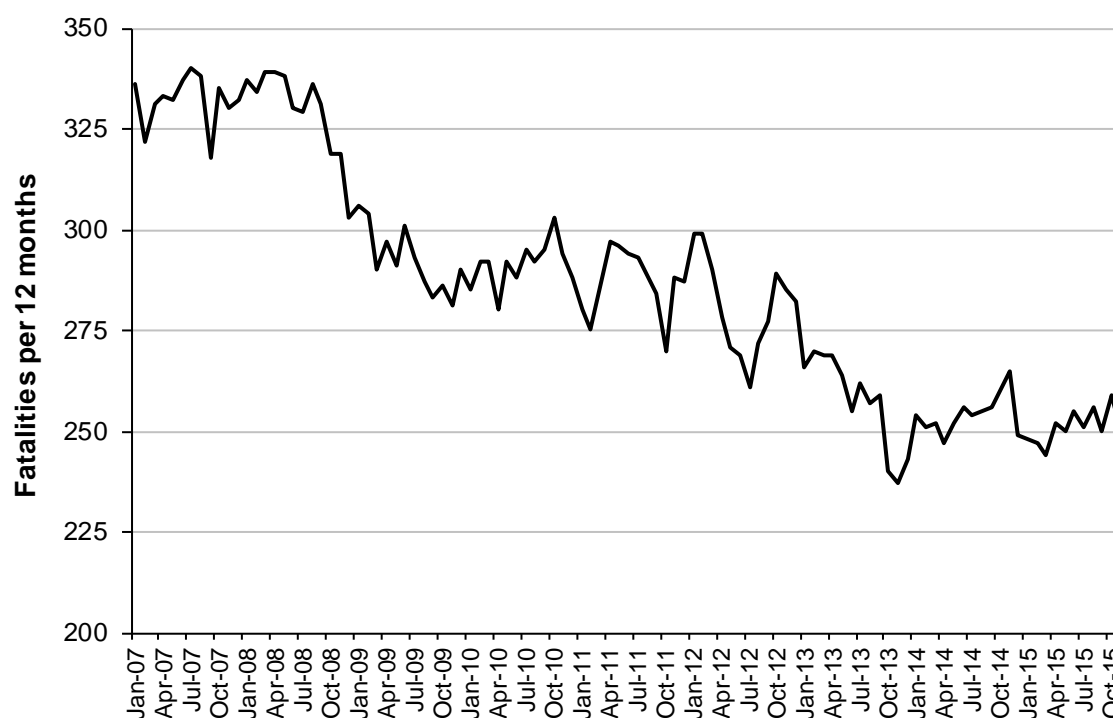
Status Report

Fatalities

- The rolling 12 month number of road fatalities in November 2015 stands at 249. The number of fatalities in 2014 stood at 265 (6% down).
- 18 people were fatally injured in November 2015 on Victorian roads. This compares to 28 in November 2014.

Fatalities (rolling 12 month, to end November 2015)

Category	2015	2014	2013	2015 v 2014		2015 v 2013		5 Year Av
Fatal Injuries (Rolling 12 Month Total)								
Fatal (to November)	249	265	237	-16	(-6%)	+12	(+5%)	265
per 10,000 veh	0.54	0.59	0.54	-0.05	(-8%)	0.00	(+0%)	0.60
per 100,000 pop	4.20	4.54	4.14	-0.34	(-7%)	+0.06	(+1%)	4.62
Accidents (Rolling 12 Month Total)								
Fatal (to November)	231	236	219	-5	(-2%)	+12	(+5%)	242
per 10,000 veh	0.52	0.52	0.50	0.00	(+0%)	+0.02	(+4%)	0.55
per 100,000 pop	4.02	4.05	3.82	-0.03	(-1%)	+0.20	(+5%)	4.23

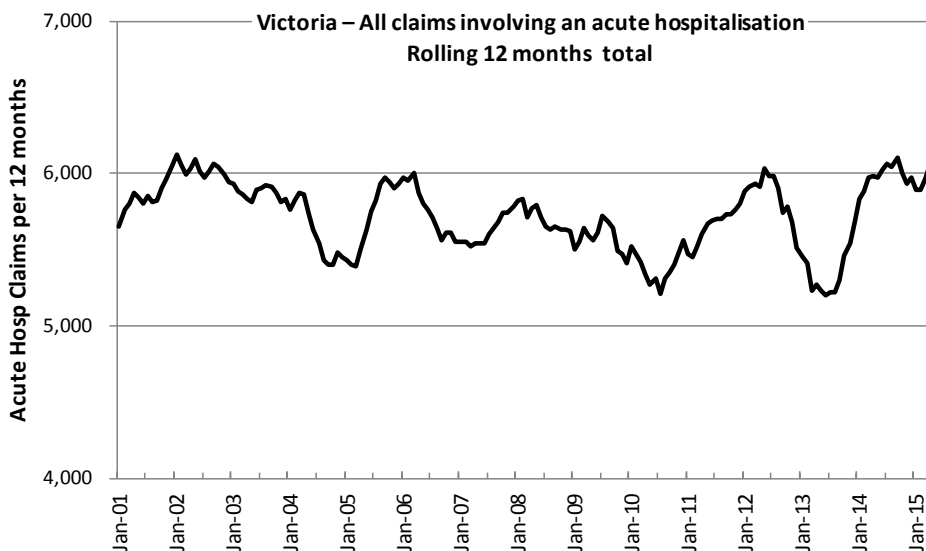
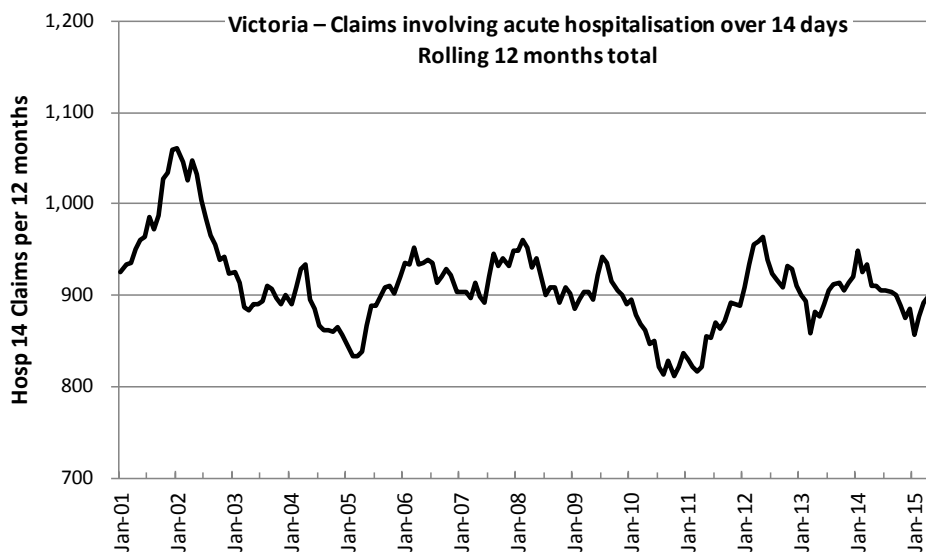


Victoria – Fatalities, rolling 12 months total

Claims involving an acute hospital admission*

(by claim acceptance date – rolling 12 month, to midnight 31 May 2015)

Category	2015	2014	2013	2015 v 2014		2015 v 2013		5 Year Av
Claims involving an acute hospitalisation over 14 days (Rolling 12 Month Total)								
Claims (to May)	889	910	877	-21	(-2%)	+12	(+1%)	899
per 100,000 pop	15.1	15.7	15.5	-0.6	(-4%)	-0.4	(-3%)	15.8
per 10,000 veh	1.9	2.0	2.0	-0.1	(-5%)	-0.1	(-5%)	2.1
All claims involving an acute hospitalisation (Rolling 12 Month Total)								
Claims (to May)	6,003	5,967	5,236	+36	(+1%)	+767	(+15%)	5,781
per 100,000 pop	102.1	103.2	92.3	-1.1	(-1%)	+9.8	(+11%)	101.0
per 10,000 veh	13.1	13.4	12.0	-0.3	(-2%)	+1.1	(+9%)	13.2



*An acute hospital admission refers to a hospital admission that occurred within 7 days of accident.

Fatalities: 12 months to November 2015

Category	2015	2014	2013	2015 v 2014		2015 v 2013		5 Year Av
Overview								
Fatalities	249	265	237	-16	(-6%)	+12	(+5%)	265
Accidents	231	236	219	-5	(-2%)	+12	(+5%)	242
Sex								
Female	69	75	80	-6	(-8%)	-11	(-14%)	77
Male	180	190	157	-10	(-5%)	+23	(+15%)	187
Roaduser								
Bicyclist	11	8	6	+3	(+38%)	+5	(+83%)	8
Driver	123	123	121	0	(0%)	+2	(+2%)	127
Motorcyclist	32	31	38	+1	(+3%)	-6	(-16%)	38
Passenger	49	55	41	-6	(-11%)	+8	(+20%)	52
Pedestrian	34	48	31	-14	(-29%)	+3	(+10%)	40
Location								
Melbourne	119	112	99	+7	(+6%)	+20	(+20%)	118
Rural Victoria	130	153	138	-23	(-15%)	-8	(-6%)	147
Agegroup								
0-4	2	4	0	-2	(-50%)	+2	NA	3
5-15	3	10	5	-7	(-70%)	-2	(-40%)	7
16-17	13	4	3	+9	(+225%)	+10	(+333%)	7
18-20	22	13	17	+9	(+69%)	+5	(+29%)	23
21-25	16	34	26	-18	(-53%)	-10	(-38%)	28
26-29	25	18	15	+7	(+39%)	+10	(+67%)	19
30-39	31	43	30	-12	(-28%)	+1	(+3%)	36
40-49	39	25	31	+14	(+56%)	+8	(+26%)	33
50-59	28	35	26	-7	(-20%)	+2	(+8%)	31
60-69	25	35	28	-10	(-29%)	-3	(-11%)	30
70+	45	44	55	+1	(+2%)	-10	(-18%)	48
Altime								
High (Melb)	65	56	60	+9	(+16%)	+5	(+8%)	62
High (Rural)	59	64	51	-5	(-8%)	+8	(+16%)	66
High (Vic)	124	120	111	+4	(+3%)	+13	(+12%)	128
Low (Melb)	54	56	39	-2	(-4%)	+15	(+38%)	56
Low (Rural)	71	89	87	-18	(-20%)	-16	(-18%)	81
Low (Vic)	125	145	126	-20	(-14%)	-1	(-1%)	137
Accident Type								
Intersection								
Adjacent direction	35	32	33	+3	(+9%)	+2	(+6%)	32
Opposing direction	11	8	2	+3	(+38%)	+9	(+450%)	7
Mid-block/other								
Head on	36	40	42	-4	(-10%)	-6	(-14%)	39
Same direction	13	11	17	+2	(+18%)	-4	(-24%)	14
Manoeuvre/o'taking	16	12	11	+4	(+33%)	+5	(+45%)	14
On path	4	9	1	-5	(-56%)	+3	(+300%)	5
Single vehicle	98	98	94	0	(0%)	+4	(+4%)	108
Other (incl peds)	36	55	37	-19	(-35%)	-1	(-3%)	47

Fatalities: 12 months to November 2015 – Continued

Category	2015	2014	2013	2015 v 2014		2015 v 2013		5 Year Av
Police Service Area (based on Local Government Area (see p.13))								
BALLARAT	3	4	7	-1	(-25%)	-4	(-57%)	5
BANYULE	4	0	3	+4		+1	(+33%)	3
BASS COAST	3	11	6	-8	(-73%)	-3	(-50%)	7
BAW BAW	1	5	5	-4	(-80%)	-4	(-80%)	5
BENALLA	14	8	11	+6	(+75%)	+3	(+27%)	10
BENDIGO	3	5	6	-2	(-40%)	-3	(-50%)	6
BOROONDARA	2	3	6	-1	(-33%)	-4	(-67%)	3
BRIMBANK	5	4	5	+1	(+25%)	0	(0%)	7
CAMPASPE	5	7	4	-2	(-29%)	+1	(+25%)	6
CARDINIA	8	8	1	0	(0%)	+7	(+700%)	7
CASEY	4	4	8	0	(0%)	-4	(-50%)	6
CENTRAL GOLDFIELDS	2	3	3	-1	(-33%)	-1	(-33%)	3
DAREBIN	2	2	1	0	(0%)	+1	(+100%)	3
EAST GIPPSLAND	9	6	4	+3	(+50%)	+5	(+125%)	7
FRANKSTON	1	6	0	-5	(-83%)	+1		3
GEELONG	4	6	11	-2	(-33%)	-7	(-64%)	9
GLEN EIRA	2	5	7	-3	(-60%)	-5	(-71%)	5
GREATER DANDENONG	8	4	3	+4	(+100%)	+5	(+167%)	5
HOBSONS BAY	2	0	3	+2		-1	(-33%)	1
HORSHAM	7	1	4	+6	(+600%)	+3	(+75%)	5
HUME	7	4	7	+3	(+75%)	0	(0%)	6
KINGSTON	4	4	7	0	(0%)	-3	(-43%)	5
KNOX	5	6	4	-1	(-17%)	+1	(+25%)	3
LA TROBE	3	4	7	-1	(-25%)	-4	(-57%)	5
MACEDON RANGES	8	12	3	-4	(-33%)	+5	(+167%)	7
MANNINGHAM	0	1	0	-1	(-100%)	0		1
MARIBYRNONG	4	1	3	+3	(+300%)	+1	(+33%)	2
MAROONDAH	2	1	1	+1	(+100%)	+1	(+100%)	2
MELBOURNE	5	4	2	+1	(+25%)	+3	(+150%)	4
MELTON	6	6	6	0	(0%)	0	(0%)	6
MILDURA	1	4	5	-3	(-75%)	-4	(-80%)	3
MITCHELL	11	4	8	+7	(+175%)	+3	(+38%)	8
MONASH	4	3	3	+1	(+33%)	+1	(+33%)	4
MOONEE VALLEY	2	5	1	-3	(-60%)	+1	(+100%)	2
MOORABOOL	6	6	9	0	(0%)	-3	(-33%)	8
MORELAND	3	5	2	-2	(-40%)	+1	(+50%)	3
MORNINGTON PENINSULA	8	10	3	-2	(-20%)	+5	(+167%)	7
NILLUMBIK	2	1	0	+1	(+100%)	+2		2
NORTHERN GRAMPIANS	3	6	4	-3	(-50%)	-1	(-25%)	4
PORT PHILLIP	1	2	3	-1	(-50%)	-2	(-67%)	2
SHEPPARTON	8	2	4	+6	(+300%)	+4	(+100%)	6
SOUTHERN GRAMPIANS	6	6	1	0	(0%)	+5	(+500%)	5
STONNINGTON	4	5	2	-1	(-20%)	+2	(+100%)	3
SURF COAST	7	7	3	0	(0%)	+4	(+133%)	7
SWAN HILL	3	7	6	-4	(-57%)	-3	(-50%)	5
WANGARATTA	8	10	10	-2	(-20%)	-2	(-20%)	11
WARRNAMBOOL	8	15	8	-7	(-47%)	0	(0%)	8
WELLINGTON	3	6	5	-3	(-50%)	-2	(-40%)	5
WHITEHORSE	4	3	1	+1	(+33%)	+3	(+300%)	3
WHITTLESEA	5	4	3	+1	(+25%)	+2	(+67%)	5
WODONGA	3	8	4	-5	(-63%)	-1	(-25%)	4
WYNDHAM	6	5	4	+1	(+20%)	+2	(+50%)	7
YARRA	0	1	2	-1	(-100%)	-2	(-100%)	1
YARRA RANGES	10	5	8	+5	(+100%)	+2	(+25%)	8

Claims involving acute hospitalisation over 14 days: 12 months to May 2015 (claim acceptance date)

Category	2015	2014	2013	2015 v 2014		2015 v 2013		5 Year Av
Overview								
Claims	889	910	877	-21	(-2%)	+12	(+1%)	899
Sex								
Female	375	367	368	+8	(+2%)	+7	(+2%)	368
Male	512	543	508	-31	(-6%)	+4	(+1%)	530
Roaduser								
Driver	348	370	381	-22	(-6%)	-33	(-9%)	358
Passenger	137	144	141	-7	(-5%)	-4	(-3%)	143
Motorcyclist	173	162	124	+11	(+7%)	+49	(+40%)	161
Pedestrian	163	186	181	-23	(-12%)	-18	(-10%)	180
Cyclist	38	31	31	+7	(+23%)	+7	(+23%)	37
Train/Tram	13	4	6	+9	(+225%)	+7	(+117%)	8
Location								
Melbourne	571	570	558	+1	(+0%)	+13	(+2%)	578
Rural Victoria	290	327	317	-37	(-11%)	-27	(-9%)	311
Agegroup								
0-4	4	2	2	+2	(+100%)	+2	(+100%)	3
5-15	17	13	8	+4	(+31%)	+9	(+113%)	14
16-17	9	12	18	-3	(-25%)	-9	(-50%)	17
18-20	45	61	63	-16	(-26%)	-18	(-29%)	56
21-25	80	80	85	0	(0%)	-5	(-6%)	83
26-29	54	45	37	+9	(+20%)	+17	(+46%)	51
30-39	109	102	110	+7	(+7%)	-1	(-1%)	111
40-49	106	126	110	-20	(-16%)	-4	(-4%)	117
50-59	108	109	103	-1	(-1%)	+5	(+5%)	104
60-69	101	105	104	-4	(-4%)	-3	(-3%)	105
70+	256	255	237	+1	(+0%)	+19	(+8%)	239
Alctime								
High (Melb)	212	237	246	-25	(-11%)	-34	(-14%)	243
High (Rural)	117	126	119	-9	(-7%)	-2	(-2%)	123
High (Vic)	329	363	365	-34	(-9%)	-36	(-10%)	366
Low (Melb)	359	333	312	+26	(+8%)	+47	(+15%)	335
Low (Rural)	173	201	198	-28	(-14%)	-25	(-13%)	187
Low (Vic)	532	534	510	-2	(-0%)	+22	(+4%)	523
Accident Type								
Intersection								
Adjacent direction	100	110	125	-10	(-9%)	-25	(-20%)	116
Opposing direction	52	64	53	-12	(-19%)	-1	(-2%)	60
Mid-block/other								
Head on	85	89	82	-4	(-4%)	+3	(+4%)	85
Same direction	86	75	69	+11	(+15%)	+17	(+25%)	85
Manoeuvre/o'taking	54	60	65	-6	(-10%)	-11	(-17%)	57
On path	37	23	22	+14	(+61%)	+15	(+68%)	24
Single vehicle	264	257	236	+7	(+3%)	+28	(+12%)	251
Other (incl peds)	211	232	225	-21	(-9%)	-14	(-6%)	221

Note: Excludes rejected claims and claims for interstate crashes.

Claims involving acute hospitalisation over 14 days: 12 months to May 2015 (claim acceptance date) –
Continued

Category	2015	2014	2013	2015 v 2013		2015 v 2014		5 Year Av
Police Service Area (based on Local Government Area (see p.13))								
BALLARAT	14	24	12	-10	(-42%)	+2	(+17%)	16
BANYULE	7	8	12	-1	(-13%)	-5	(-42%)	10
BASS COAST	19	20	13	-1	(-5%)	+6	(+46%)	17
BAW BAW	10	8	8	+2	(+25%)	+2	(+25%)	10
BENALLA	22	19	19	+3	(+16%)	+3	(+16%)	21
BENDIGO	7	15	15	-8	(-53%)	-8	(-53%)	15
BOROONDARA	21	26	15	-5	(-19%)	+6	(+40%)	23
BRIMBANK	29	18	22	+11	(+61%)	+7	(+32%)	24
CAMPASPE	8	7	7	+1	(+14%)	+1	(+14%)	7
CARDINIA	14	13	13	+1	(+8%)	+1	(+8%)	15
CASEY	28	26	28	+2	(+8%)	0	(0%)	26
CENTRAL GOLDFIELDS	3	7	8	-4	(-57%)	-5	(-63%)	6
DAREBIN	17	15	21	+2	(+13%)	-4	(-19%)	17
EAST GIPPSLAND	10	8	8	+2	(+25%)	+2	(+25%)	11
FRANKSTON	17	13	10	+4	(+31%)	+7	(+70%)	15
GEELONG	26	27	39	-1	(-4%)	-13	(-33%)	29
GLEN EIRA	21	35	26	-14	(-40%)	-5	(-19%)	30
GREATER DANDENONG	17	34	20	-17	(-50%)	-3	(-15%)	26
HOBSONS BAY	12	11	10	+1	(+9%)	+2	(+20%)	11
HORSHAM	6	5	9	+1	(+20%)	-3	(-33%)	7
HUME	27	20	28	+7	(+35%)	-1	(-4%)	25
KINGSTON	26	21	21	+5	(+24%)	+5	(+24%)	21
KNOX	15	18	20	-3	(-17%)	-5	(-25%)	17
LA TROBE	11	11	13	0	(0%)	-2	(-15%)	14
MACEDON RANGES	18	21	17	-3	(-14%)	+1	(+6%)	17
MANNINGHAM	12	14	18	-2	(-14%)	-6	(-33%)	14
MARIBYRNONG	8	7	14	+1	(+14%)	-6	(-43%)	12
MAROONDAH	5	7	5	-2	(-29%)	0	(0%)	9
MELBOURNE	36	24	33	+12	(+50%)	+3	(+9%)	31
MELTON	16	10	19	+6	(+60%)	-3	(-16%)	14
MILDURA	4	8	7	-4	(-50%)	-3	(-43%)	8
MITCHELL	11	28	21	-17	(-61%)	-10	(-48%)	18
MONASH	17	26	17	-9	(-35%)	0	(0%)	22
MOONEE VALLEY	24	16	19	+8	(+50%)	+5	(+26%)	18
MOORABOOL	19	14	17	+5	(+36%)	+2	(+12%)	15
MORELAND	31	29	31	+2	(+7%)	0	(0%)	28
MORNINGTON PENINSULA	27	23	31	+4	(+17%)	-4	(-13%)	29
NILLUMBIK	10	3	10	+7	(+233%)	0	(0%)	7
NORTHERN GRAMPIANS	11	15	11	-4	(-27%)	0	(0%)	10
PORT PHILLIP	18	21	7	-3	(-14%)	+11	(+157%)	14
SHEPPARTON	9	10	19	-1	(-10%)	-10	(-53%)	10
SOUTHERN GRAMPIANS	11	9	8	+2	(+22%)	+3	(+38%)	9
STONNINGTON	14	13	10	+1	(+8%)	+4	(+40%)	16
SURF COAST	14	11	10	+3	(+27%)	+4	(+40%)	12
SWAN HILL	15	6	9	+9	(+150%)	+6	(+67%)	8
WANGARATTA	17	15	16	+2	(+13%)	+1	(+6%)	16
WARRNAMBOOL	10	14	14	-4	(-29%)	-4	(-29%)	13
WELLINGTON	8	9	10	-1	(-11%)	-2	(-20%)	9
WHITEHORSE	18	21	14	-3	(-14%)	+4	(+29%)	19
WHITTLESEA	15	26	20	-11	(-42%)	-5	(-25%)	21
WODONGA	7	16	7	-9	(-56%)	0	(0%)	10
WYNDHAM	25	24	23	+1	(+4%)	+2	(+9%)	22
YARRA	13	14	14	-1	(-7%)	-1	(-7%)	13
YARRA RANGES	31	34	27	-3	(-9%)	+4	(+15%)	32

Note: excludes rejected claims and claims for interstate crashes

Claims involving an acute hospital admission: 12 months to May 2015 (claim acceptance date)

Category	2015	2014	2013	2015 v 2014	2015 v 2013	5 Year Av
Overview						
Claims	6,003	5,967	5,236	+36	(+1%)	5,781
Sex						
Female	2,605	2,471	2,194	+134	(+5%)	2,447
Male	3,395	3,492	3,040	-97	(-3%)	3,332
Roaduser						
Driver	2,723	2,669	2,460	+54	(+2%)	2,647
Passenger	1,027	1,014	893	+13	(+1%)	1,017
Motorcyclist	1,052	1,169	757	-117	(-10%)	987
Pedestrian	638	627	634	+11	(+2%)	642
Cyclist	408	384	355	+24	(+6%)	371
Train/Tram	36	25	29	+11	(+44%)	28
Location						
Melbourne	4,051	4,009	3,480	+42	(+1%)	3,895
Rural Victoria	1,717	1,817	1,721	-100	(-6%)	1,795
Agegroup						
0-4	50	53	46	-3	(-6%)	50
5-15	218	176	186	+42	(+24%)	192
16-17	92	93	105	-1	(-1%)	111
18-20	476	530	461	-54	(-10%)	519
21-25	735	774	635	-39	(-5%)	722
26-29	485	455	392	+30	(+7%)	445
30-39	926	910	775	+16	(+2%)	886
40-49	896	889	782	+7	(+1%)	866
50-59	774	751	656	+23	(+3%)	724
60-69	547	535	470	+12	(+2%)	518
70+	809	803	728	+6	(+1%)	749
Alctime						
High (Melb)	1,669	1,714	1,530	-45	(-3%)	1,710
High (Rural)	719	721	706	-2	(-0%)	754
High (Vic)	2,388	2,435	2,236	-47	(-2%)	2,464
Low (Melb)	2,382	2,295	1,950	+87	(+4%)	2,185
Low (Rural)	998	1,096	1,015	-98	(-9%)	1,042
Low (Vic)	3,380	3,391	2,965	-11	(-0%)	3,227
Accident Type						
Intersection						
Adjacent direction	728	836	764	-108	(-13%)	825
Opposing direction	498	520	475	-22	(-4%)	487
Mid-block/other						
Head on	305	329	294	-24	(-7%)	324
Same direction	926	840	747	+86	(+10%)	887
Manoeuvre/o'taking	338	335	307	+3	(+1%)	327
On path	298	286	201	+12	(+4%)	244
Single vehicle	1,702	1,678	1,392	+24	(+1%)	1,607
Other (incl peds)	1,213	1,145	1,056	+68	(+6%)	1,081

Note: excludes rejected claims and claims for interstate crashes

Claims involving an acute hospital admission: 12 months to May 2015 (claim acceptance date) – Continued

Category	2015	2014	2013	2015 v 2014		2015 v 2013		5 Year Av
Police Service Area (based on Local Government Area (see p.13))								
BALLARAT	77	93	90	-16	(-17%)	-13	(-14%)	95
BANYULE	53	64	60	-11	(-17%)	-7	(-12%)	60
BASS COAST	85	99	64	-14	(-14%)	+21	(+33%)	84
BAW BAW	57	61	62	-4	(-7%)	-5	(-8%)	59
BENALLA	109	117	105	-8	(-7%)	+4	(+4%)	117
BENDIGO	94	77	101	+17	(+22%)	-7	(-7%)	98
BOROONDARA	132	153	116	-21	(-14%)	+16	(+14%)	137
BRIMBANK	152	130	140	+22	(+17%)	+12	(+9%)	149
CAMPASPE	40	34	36	+6	(+18%)	+4	(+11%)	38
CARDINIA	113	111	76	+2	(+2%)	+37	(+49%)	100
CASEY	271	261	205	+10	(+4%)	+66	(+32%)	243
CENTRAL GOLDFIELDS	31	27	31	+4	(+15%)	0	(0%)	27
DAREBIN	91	99	93	-8	(-8%)	-2	(-2%)	98
EAST GIPPSLAND	61	49	74	+12	(+24%)	-13	(-18%)	64
FRANKSTON	130	115	110	+15	(+13%)	+20	(+18%)	131
GEELONG	209	241	199	-32	(-13%)	+10	(+5%)	229
GLEN EIRA	170	201	156	-31	(-15%)	+14	(+9%)	178
GREATER DANDENONG	224	272	192	-48	(-18%)	+32	(+17%)	221
HOBSONS BAY	69	73	47	-4	(-5%)	+22	(+47%)	66
HORSHAM	27	33	35	-6	(-18%)	-8	(-23%)	34
HUME	190	170	132	+20	(+12%)	+58	(+44%)	160
KINGSTON	145	146	129	-1	(-1%)	+16	(+12%)	135
KNOX	107	120	84	-13	(-11%)	+23	(+27%)	113
LA TROBE	53	67	62	-14	(-21%)	-9	(-15%)	65
MACEDON RANGES	92	105	80	-13	(-12%)	+12	(+15%)	88
MANNINGHAM	77	65	72	+12	(+18%)	+5	(+7%)	70
MARIBYRNONG	68	76	62	-8	(-11%)	+6	(+10%)	77
MAROONDAH	53	58	52	-5	(-9%)	+1	(+2%)	62
MELBOURNE	246	234	253	+12	(+5%)	-7	(-3%)	242
MELTON	78	79	69	-1	(-1%)	+9	(+13%)	76
MILDURA	21	47	29	-26	(-55%)	-8	(-28%)	36
MITCHELL	98	106	95	-8	(-8%)	+3	(+3%)	92
MONASH	201	200	177	+1	(+0%)	+24	(+14%)	182
MOONEE VALLEY	132	108	104	+24	(+22%)	+28	(+27%)	110
MOORABOOL	98	114	102	-16	(-14%)	-4	(-4%)	98
MORELAND	166	140	131	+26	(+19%)	+35	(+27%)	149
MORNINGTON PENINSULA	151	149	119	+2	(+1%)	+32	(+27%)	157
NILLUMBIK	44	26	40	+18	(+69%)	+4	(+10%)	38
NORTHERN GRAMPIANS	52	38	41	+14	(+37%)	+11	(+27%)	40
PORT PHILLIP	168	128	109	+40	(+31%)	+59	(+54%)	127
SHEPPARTON	71	63	76	+8	(+13%)	-5	(-7%)	66
SOUTHERN GRAMPIANS	42	48	48	-6	(-13%)	-6	(-13%)	47
STONNINGTON	145	131	125	+14	(+11%)	+20	(+16%)	132
SURF COAST	70	74	48	-4	(-5%)	+22	(+46%)	70
SWAN HILL	45	33	37	+12	(+36%)	+8	(+22%)	37
WANGARATTA	93	99	98	-6	(-6%)	-5	(-5%)	98
WARRNAMBOOL	67	67	71	0	(0%)	-4	(-6%)	81
WELLINGTON	79	64	63	+15	(+23%)	+16	(+25%)	73
WHITEHORSE	95	119	96	-24	(-20%)	-1	(-1%)	114
WHITTLESEA	128	152	139	-24	(-16%)	-11	(-8%)	138
WODONGA	46	61	74	-15	(-25%)	-28	(-38%)	62
WYNDHAM	168	156	131	+12	(+8%)	+37	(+28%)	149
YARRA	114	116	89	-2	(-2%)	+25	(+28%)	108
YARRA RANGES	170	157	172	+13	(+8%)	-2	(-1%)	177

Note: excludes rejected claims and claims for interstate crashes

Fatalities: Victorian monthly totals since 1951

Year	Jan	Feb	Mar	Apr	May	Jun	Jul	Aug	Sep	Oct	Nov	Dec	Totals
1951							61	59	52	38	29	41	
1952	45	40	54	61	54	69	67	55	44	44	31	20	584
1953	23	28	54	58	49	42	50	37	44	27	36	32	480
1954	44	42	28	60	55	36	63	33	25	52	30	41	509
1955	44	36	45	55	48	56	64	44	44	32	40	40	548
1956	34	48	51	67	53	65	71	47	39	39	44	48	606
1957	50	41	46	58	52	54	57	53	51	46	32	49	589
1958	50	38	42	58	54	41	54	53	57	40	57	52	596
1959	50	57	61	50	75	55	42	48	52	55	63	63	671
1960	49	53	57	76	70	70	67	62	61	77	52	66	760
1961	63	57	68	74	58	68	78	82	59	62	60	65	794
1962	65	41	76	78	72	80	70	77	62	53	64	70	808
1963	67	56	65	85	66	68	77	55	55	58	61	67	780
1964	73	71	78	71	83	89	80	89	67	66	62	75	904
1965	63	64	86	88	80	87	79	69	81	77	68	87	929
1966	75	59	75	103	74	86	87	80	75	66	90	85	955
1967	61	79	91	97	81	71	59	67	70	68	60	83	887
1968	70	78	86	78	73	76	73	77	72	80	81	105	949
1969	79	68	79	87	86	77	87	83	87	83	94	101	1,011
1970	85	84	106	80	87	88	110	106	78	95	68	74	1,061
1971	83	75	77	68	76	86	85	72	78	73	74	76	923
1972	61	62	75	82	75	71	98	85	83	62	80	81	915
1973	75	75	95	85	64	66	61	85	89	88	66	86	935
1974	56	62	81	60	70	73	67	62	53	70	80	72	806
1975	67	65	87	73	97	94	57	75	69	66	71	89	910
1976	79	78	88	78	69	79	60	70	82	78	77	100	938
1977	65	71	89	79	65	79	70	91	68	74	96	107	954
1978	75	54	95	63	64	69	68	77	65	84	83	72	869
1979	63	60	86	75	45	64	66	75	69	79	72	93	847
1980	48	55	66	59	47	56	60	53	45	58	61	49	657
1981	69	60	58	61	74	65	61	63	68	71	59	57	766
1982	55	53	59	59	67	45	47	71	53	69	65	66	709
1983	42	59	53	63	62	61	65	51	59	43	54	52	664
1984	65	48	58	50	56	48	46	50	71	53	55	58	658
1985	56	47	50	65	75	50	51	50	58	61	56	64	683
1986	56	50	70	69	59	53	42	54	54	52	59	51	669
1987	62	43	57	52	63	59	62	49	62	61	55	80	705
1988	49	58	69	54	79	50	54	52	64	59	43	70	701
1989	76	65	80	59	67	73	52	65	82	50	41	66	776
1990	48	44	55	39	56	64	41	34	48	35	40	44	548
1991	45	39	70	30	34	29	44	47	41	36	35	53	503
1992	34	33	34	47	33	29	23	27	28	38	30	40	396
1993	27	40	37	39	44	33	33	27	34	39	43	40	436
1994	36	31	44	35	27	33	29	37	17	27	32	30	378
1995	38	35	26	33	34	41	27	34	34	32	38	46	418
1996	40	47	35	38	28	29	30	35	49	24	33	30	418
1997	36	25	30	30	40	22	39	26	26	29	39	35	377
1998	29	29	32	36	31	22	40	19	37	36	49	30	390
1999	32	31	35	35	34	24	35	26	28	38	29	37	384
2000	32	26	46	32	39	32	33	29	36	29	44	29	407
2001	44	30	31	32	31	41	34	37	35	51	41	37	444
2002	32	31	45	31	45	32	27	25	31	30	31	37	397
2003	21	41	36	28	31	28	20	23	23	24	24	31	330
2004	32	22	30	30	46	28	27	26	22	28	25	27	343
2005	33	27	47	21	29	23	30	25	25	33	17	36	346
2006	24	37	23	23	27	23	25	22	43	20	31	39	337
2007	23	23	32	25	26	28	28	20	23	37	26	41	332
2008	28	20	37	25	25	20	27	27	18	25	26	25	303
2009	31	18	23	32	19	30	19	21	14	28	21	34	290
2010	26	25	23	20	31	26	26	18	17	36	12	28	288
2011	18	20	34	31	30	24	25	14	12	22	30	27	287
2012	30	20	25	19	23	22	17	25	17	34	26	24	282
2013	14	24	24	19	18	13	24	20	19	15	23	30	243
2014	25	21	25	14	23	17	22	21	20	19	28	14	249
2015	25	22	23	21	21	22	18	25	13	28	18		
Ave	48	46	55	53	53	51	51	49	49	49	49	55	613
Max	85	84	106	103	97	94	110	106	89	95	96	107	1,061
Min	14	18	23	14	18	13	17	14	12	15	12	14	243

Fatalities by Week (2009 to 2015)

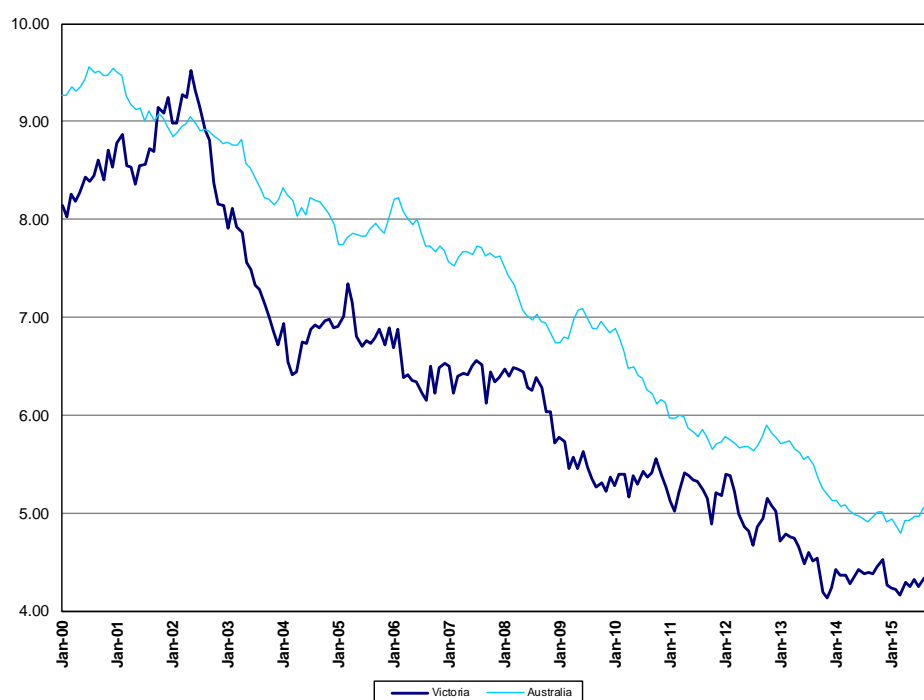
Week Ending	2009	2010	2011	2012	2013	2014	2015	Cumulative 2015	% Change 2015-2014	12 Month Moving Total
5-Jan	7	3	2	3	1	0	2	2	-	251
12-Jan	10	5	6	7	3	5	5	7	+40%	251
19-Jan	4	6	3	8	6	7	6	13	+8%	250
26-Jan	4	5	4	9	4	9	2	15	-29%	243
2-Feb	6	9	6	5	3	6	10	25	-7%	247
9-Feb	6	7	5	3	8	4	6	31	0%	249
16-Feb	7	4	6	7	6	8	4	35	-10%	245
23-Feb	4	8	3	6	6	2	6	41	0%	249
2-Mar	1	7	3	2	2	6	4	45	-4%	247
9-Mar	3	2	10	3	4	8	8	53	-4%	247
16-Mar	6	8	6	11	6	4	6	59	0%	249
23-Mar	6	3	9	5	10	4	2	61	-3%	247
30-Mar	8	7	9	6	2	6	3	64	-7%	244
6-Apr	5	4	6	7	4	6	3	67	-11%	241
13-Apr	5	5	9	2	6	6	6	73	-10%	241
20-Apr	11	7	7	6	4	2	8	81	-2%	247
27-Apr	9	1	6	3	5	2	5	86	+1%	250
4-May	6	6	6	10	6	3	4	90	+2%	251
11-May	7	8	6	2	3	4	6	96	+4%	253
18-May	1	4	7	4	1	3	4	100	+5%	254
25-May	2	11	10	6	2	5	4	104	+4%	253
1-Jun	6	5	5	2	9	9	5	109	0%	249
8-Jun	4	7	4	8	2	2	5	114	+3%	252
15-Jun	9	4	6	3	3	2	4	118	+4%	254
22-Jun	7	8	7	8	5	3	4	122	+5%	255
29-Jun	9	7	6	3	1	8	5	127	+2%	252
6-Jul	3	7	4	2	5	6	11	138	+6%	257
13-Jul	6	2	8	5	7	7	2	140	+2%	252
20-Jul	4	3	6	5	4	3	2	142	+1%	251
27-Jul	5	8	6	5	5	4	4	146	+1%	251
3-Aug	4	10	3	1	8	4	6	152	+3%	253
10-Aug	7	3	5	5	1	5	4	156	+2%	252
17-Aug	6	5	3	5	3	6	8	164	+3%	254
24-Aug	3	5	2	6	6	4	8	172	+6%	258
31-Aug	3	1	3	8	5	5	3	175	+4%	256
7-Sep	2	5	1	5	5	4	3	178	+3%	255
14-Sep	4	1	4	6	2	6	3	181	+2%	252
21-Sep	4	4	1	3	3	4	2	183	+1%	250
28-Sep	3	5	5	3	8	3	5	188	+2%	252
5-Oct	2	9	4	7	3	4	4	192	+2%	252
12-Oct	6	10	5	8	2	8	6	198	+1%	250
19-Oct	8	5	3	9	3	0	6	204	+4%	256
26-Oct	8	7	3	6	3	8	8	212	+3%	256
2-Nov	5	8	8	6	6	2	5	217	+5%	259
9-Nov	3	1	6	7	8	3	5	222	+6%	261
16-Nov	9	2	12	6	2	8	4	226	+4%	257
23-Nov	6	3	9	5	8	3	2	228	+3%	256
30-Nov	4	5	2	9	4	13	5	233	-0%	248
7-Dec	5	4	10	7	6	5				
14-Dec	8	8	3	4	10	3				
21-Dec	11	6	7	1	9	3				
28-Dec	6	8	6	8	4	3				
31-Dec	2	2	1	1	1	1				
Total	290	288	287	282	243	249				

The National Picture

State	Fatalities (12 months to November)					2015 v 2014	
	2015	2014	2013	2012			
NSW	339	317	333	381	+22	(+7%)	
VIC	250	264	237	285	-14	(-5%)	
QLD	239	229	274	283	+10	(+4%)	
SA	117	95	102	90	+22	(+23%)	
WA	160	181	162	183	-21	(-12%)	
TAS	37	40	34	29	-3	(-8%)	
NT	44	39	40	50	+5	(+13%)	
ACT	12	10	7	11	+2	(+20%)	
AUST TOTAL	1,198	1,175	1,189	1,312	+23	(+2%)	
AUST minus VIC	948	911	952	1,027	+37	(+4%)	

State	Fatalities per 10,000 registered vehicles (12 months to November)			Fatalities per 100,000 population (12 months to November)		
	2015	2014	2013	2015	2014	2013
NSW	0.64	0.62	0.66	4.45	4.22	4.50
VIC	0.54	0.59	0.54	4.22	4.53	4.14
QLD	0.63	0.61	0.75	5.01	4.85	5.89
SA	0.86	0.71	0.78	6.89	5.64	6.11
WA	0.73	0.84	0.78	6.18	7.05	6.45
TAS	0.82	0.90	0.77	7.16	7.77	6.63
NT	2.82	2.55	2.67	17.99	15.94	16.73
ACT	0.42	0.36	0.25	3.07	2.59	1.83
AUST TOTAL	0.66	0.66	0.69	5.04	5.01	5.20
AUST minus VIC	0.70	0.69	0.74	5.31	5.13	5.48

Deaths per 100,000 population, Victoria v Australia 2000 - 2015



Victoria v Australia - 12 Month Moving Fatality Rate

Booze-Bus Random Breath Testing

12 months to September 2015 (monthly totals)

	2014			2015								
	Oct	Nov	Dec	Jan	Feb	Mar	Apr	May	Jun	Jul	Aug	Sep
Melbourne	100,252	86,261	99,008	95,430	76,758	84,559	74,387	70,603	63,988	64,557	78,225	79,794
Country	8,116	10,510	7,084	5,191	7,909	5,830	3,095	7,283	10,186	2,833	3,734	4,598
Vic Total	108,368	96,771	106,092	100,621	84,667	90,389	77,482	77,886	74,174	67,390	81,959	84,392

12 months to September 2015 vs previous 12 months

	2015	2014	2013	2015 v 2014		2015 v 2013	
Melbourne	1,172,395	1,060,175	1,062,075	+112220	(+11%)	+110320	(+10%)
Country	99,061	90,264	101,223	+8797	(+10%)	-2162	(-2%)
Vic Total	1,271,456	1,150,439	1,163,298	+121017	(+11%)	+108158	(+9%)

Mobile Safety Camera Data

Speed Infringements Issued from Mobile Cameras (monthly totals)

Monthly Average = 32,664

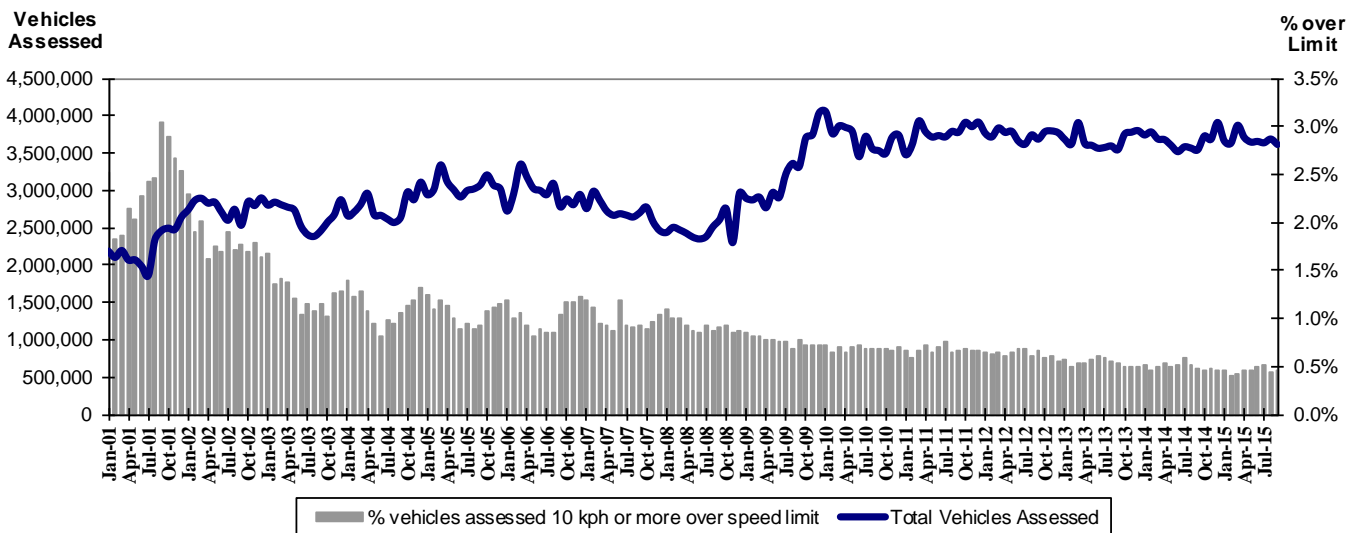
2014	2015											
	Oct	Nov	Dec	Jan	Feb	Mar	Apr	May	Jun	Jul	Aug	Sep
	35,422	32,416	28,732	37,982	31,250	31,144	33,790	30,434	33,386	36,437	31,001	29,975

Excessive Speed Infringements (ESI) Issued from Mobile Cameras (monthly totals)

Monthly Average = 303

2014	2015											
	Oct	Nov	Dec	Jan	Feb	Mar	Apr	May	Jun	Jul	Aug	Sep
	334	287	258	311	270	303	335	258	342	338	312	283

Notes: An ESI is defined as 25km/h over the speed limit except in a 110km/h zone where it is 20km/h over the limit.



Mobile Safety Cameras – Vehicles assessed and percentage of vehicles assessed 10km/h or more over speed limit per month

Explanations and References

Hi-AlcTime is those times of the day and week (*shaded* in the table below) when casualty crashes are ten times more likely to involve alcohol than casualty crashes at other (Lo-AlcTime) times.

	12am - 6am	6am - 8am	8am - 10am	10am - 2pm	2pm - 4pm	4pm - 6pm	6pm - 12pm
Monday							
Tuesday							
Wednesday							
Thursday							
Friday							
Saturday							
Sunday							

Police Service Areas align with Local Government Areas. Most Police Service Areas are equivalent to a single Local Government Area, while the remainder comprise two or three Local Government Areas.

Police Service Area	Local Government Area(s)	Police Service Area	Local Government Area(s)
BALLARAT	BALLARAT, PYRENEES	MAROONDAH	MAROONDAH
BANYULE	BANYULE	MELBOURNE	MELBOURNE
BASS COAST	BASS COAST, SOUTH GIPPSLAND	MELTON	MELTON
BAW BAW	BAWBAW	MILDURA	MILDURA
BENALLA	BENALLA, MANSFIELD, MURRINDINDI	MITCHELL	MITCHELL, STRATHBOGIE
BENDIGO	GREATER BENDIGO	MONASH	MONASH
BOROONDARA	BOROONDARA	MOONEE VALLEY	MOONEE VALLEY
BRIMBANK	BRIMBANK	MOORABOOL	GOLDEN PLAINS, HEPBURN, MOORABOOL
CAMPASPE	CAMPASPE	MORELAND	MORELAND
CARDINIA	CARDINIA	MORNINGTON PENINSULA	MORNINGTON PENINSULA
CASEY	CASEY	NILLUMBIK	NILLUMBIK
CENTRAL GOLDFIELDS	CENTRAL GOLDFIELDS, LODDON	NORTHERN GRAMPIANS	ARARAT, NORTHERN GRAMPIANS, YARRIAMBICK
GREATER DANDENONG	GREATER DANDENONG	PORT PHILLIP	PORT PHILLIP
DAREBIN	DAREBIN	SHEPPARTON	GREATER SHEPPARTON
EAST GIPPSLAND	EAST GIPPSLAND	SOUTHERN GRAMPIANS	GLENELG, SOUTHERN GRAMPIANS
FRANKSTON	FRANKSTON	STONNINGTON	STONNINGTON
GEELONG	GREATER GEELONG, QUEENSCLIFF	SURFCOAST	SURFCOAST, COLAC OTWAY
GLENEIRA	GLENEIRA, BAYSIDE	SWANHILL	BULOKE, GANNAWARRA, SWAN HILL
HOBSONS BAY	HOBSONSBAY	WANGARATTA	ALPINE, MOIRA, WANGARATTA
HORSHAM	HINDMARSH, HORSHAM, WESTWIMMERA	WARRNAMBOOL	CORANGAMITE, MOYNE, WARRNAMBOOL
HUME	HUME	WELLINGTON	WELLINGTON
KINGSTON	KINGSTON	WHITEHORSE	WHITEHORSE
KNOX	KNOX	WHITTLESEA	WHITTLESEA
LATROBE	LATROBE	WODONGA	INDIGO, TOWONG, WODONGA
MACEDON RANGES	MOUNT ALEXANDER, MACEDON RANGES	WYNDHAM	WYNDHAM
MANNINGHAM	MANNINGHAM	YARRA	YARRA
MARIBYRNONG	MARIBYRNONG	YARRA RANGES	YARRA RANGES

Useful Internet Sites

TAC Sites

- TAC Safety (Road Safety) www.tacsafety.com.au
- TAC How safe is your car www.howsafeisyourcar.com.au
- TAC Learners Log www.learnerslog.com.au
- TAC Motorcycle Safety Website www.spokes.com.au
- TAC Corporate site www.tac.vic.gov.au

Victorian Sites:

- VicRoads www.vicroads.vic.gov.au
- Victoria Police www.police.vic.gov.au
- Parliamentary Road Safety Committee www.parliament.vic.gov.au/rsc/
- ARRB Transport Research www.arrb.com.au
- RACV www.racv.com.au
- Monash University Accident Research Centre www.monash.edu.au/muarc
- Roadsafe www.roadsafe.org.au
- Cameras Save Lives www.camerassavelives.vic.gov.au

National and Interstate Sites:

- Australian Transport Safety Bureau www.atsb.gov.au
- Roads and Traffic Authority (NSW) www.rta.nsw.gov.au
- Queensland Transport - Road Safety transport.qld.gov.au/Home/Safety/Road
- Department of Transport (SA) www.transport.sa.gov.au/index.htm
- Main Roads Western Australia - Road Safety www.mrwa.wa.gov.au

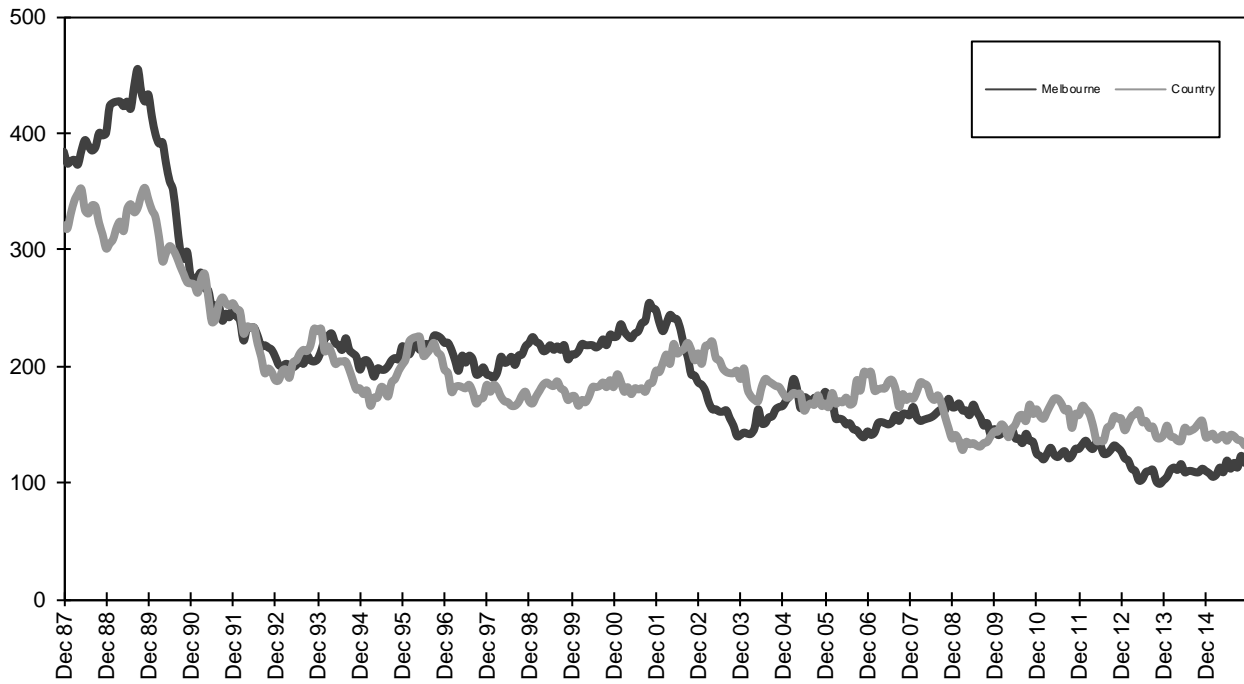
International Sites:

- National Highway Traffic Safety Admin (USA) www.nhtsa.dot.gov
- Swedish Road and Transport Institute (VTI) www.vti.se
- SWOV Institute for Road Safety Research www.swov.nl

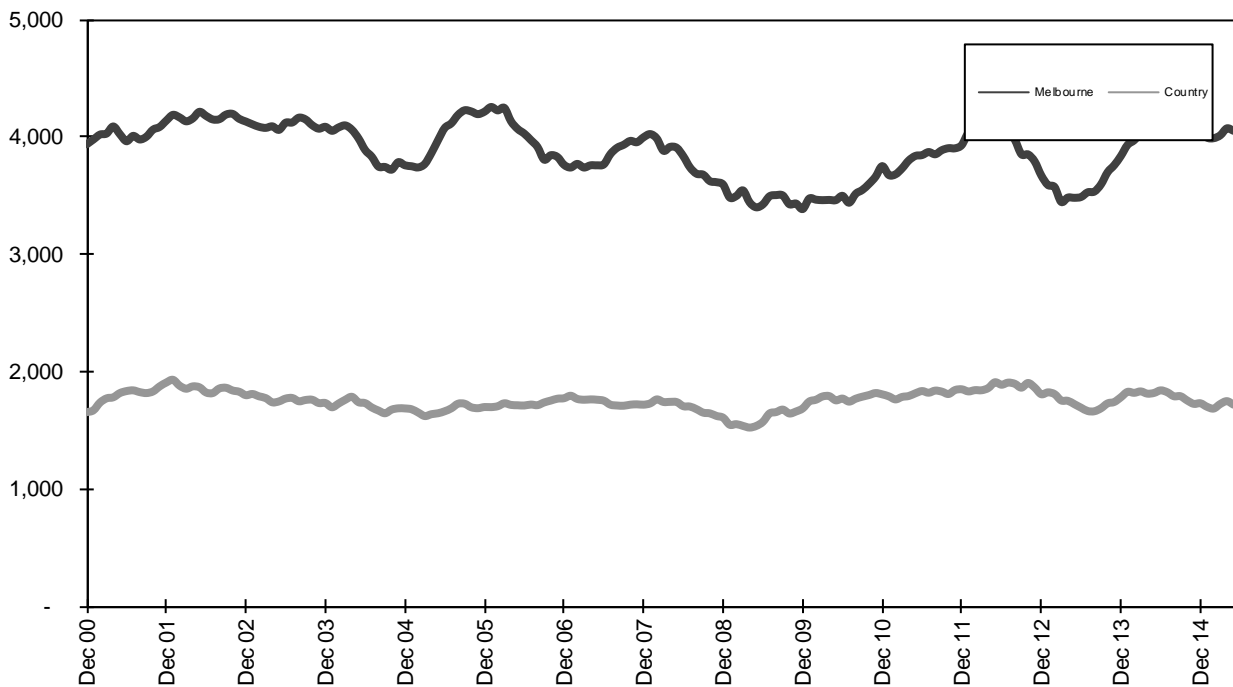
Related Sites:

- Australian Drug Foundation www.adf.org.au
- Amy Gillett Foundation www.amygillett.org.au

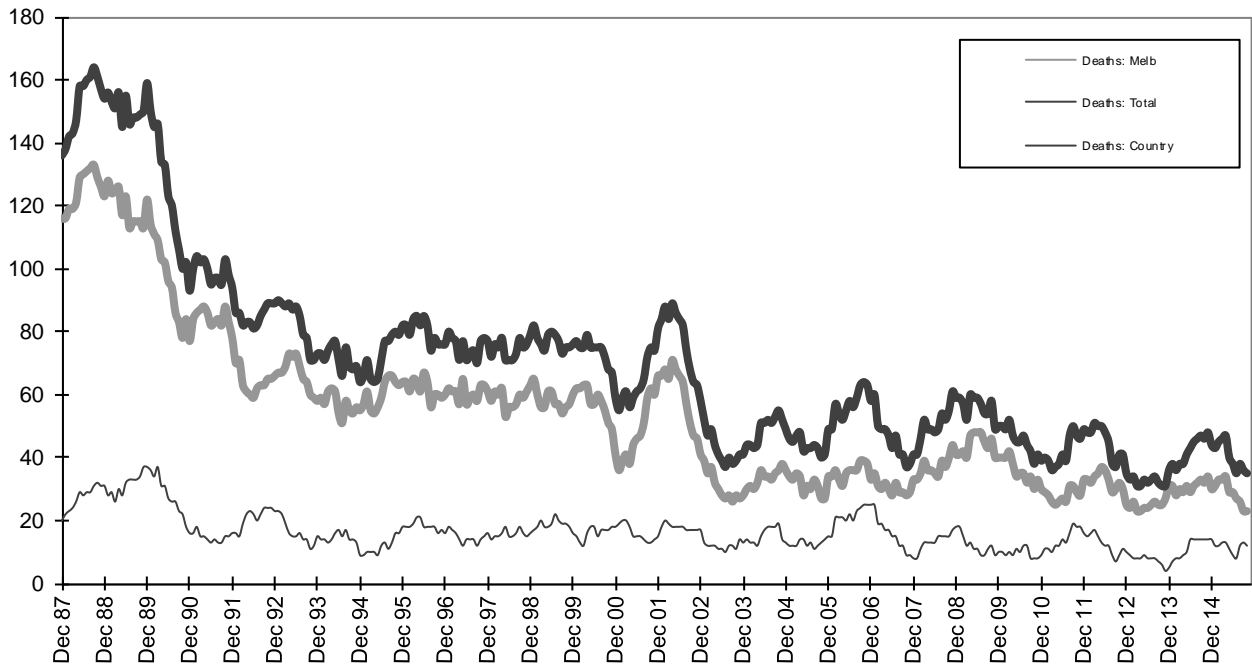
Figures



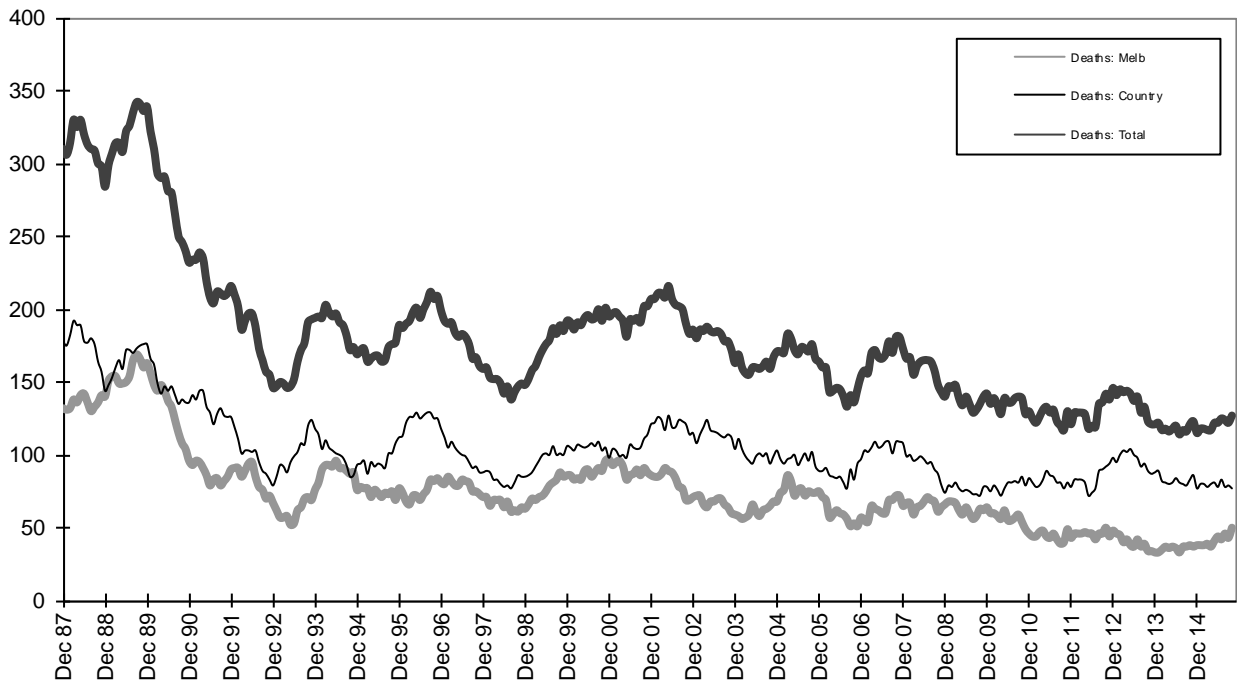
Graph 1a - Melbourne/country fatalities



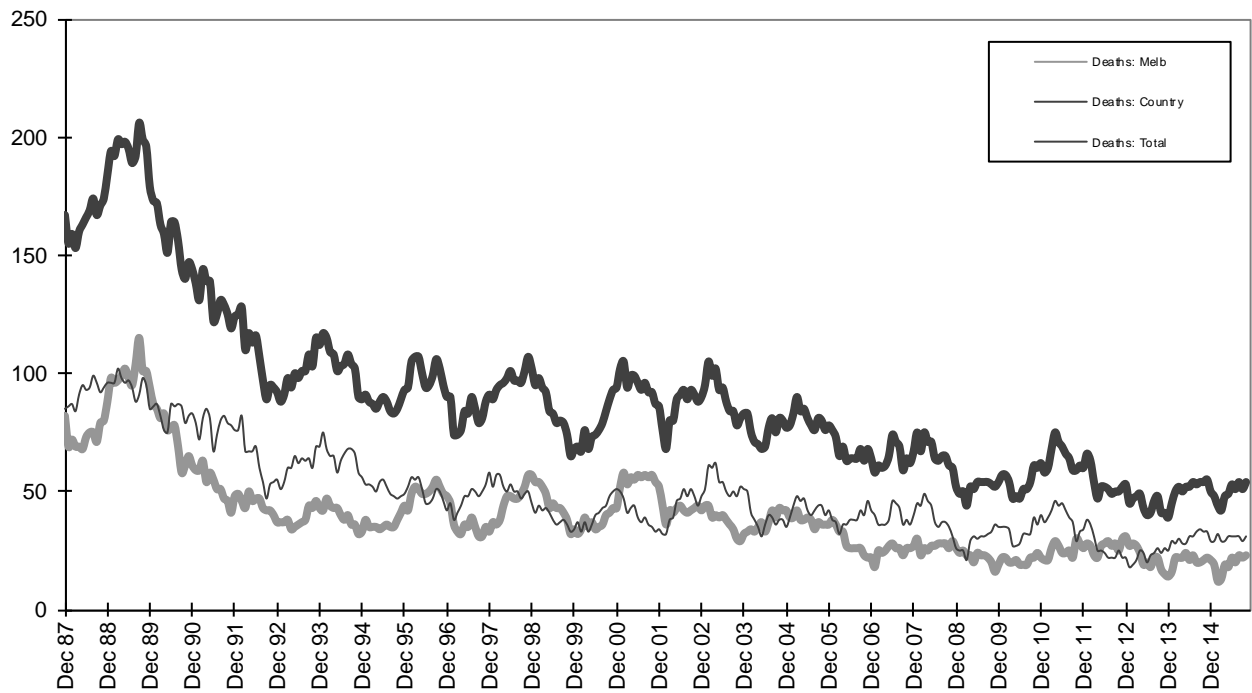
Graph 1b - Melbourne/country Claims involving an acute hospital admission



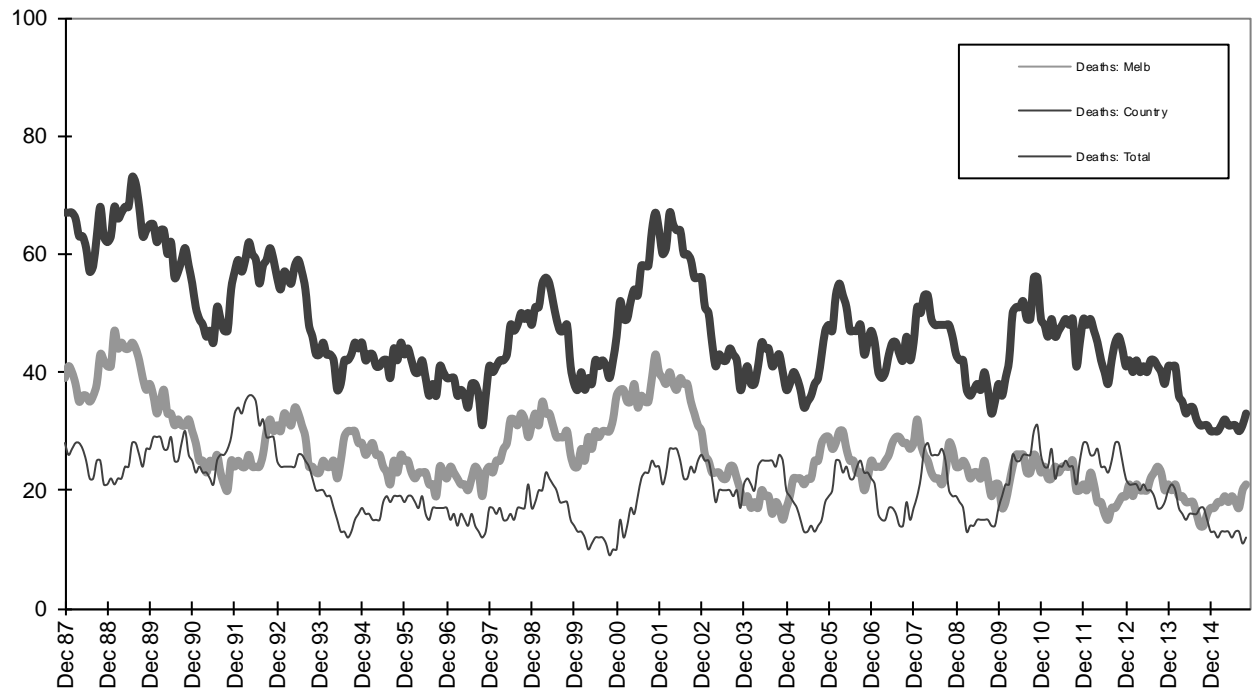
Graph 2a - Pedestrian fatalities (Melbourne/country)



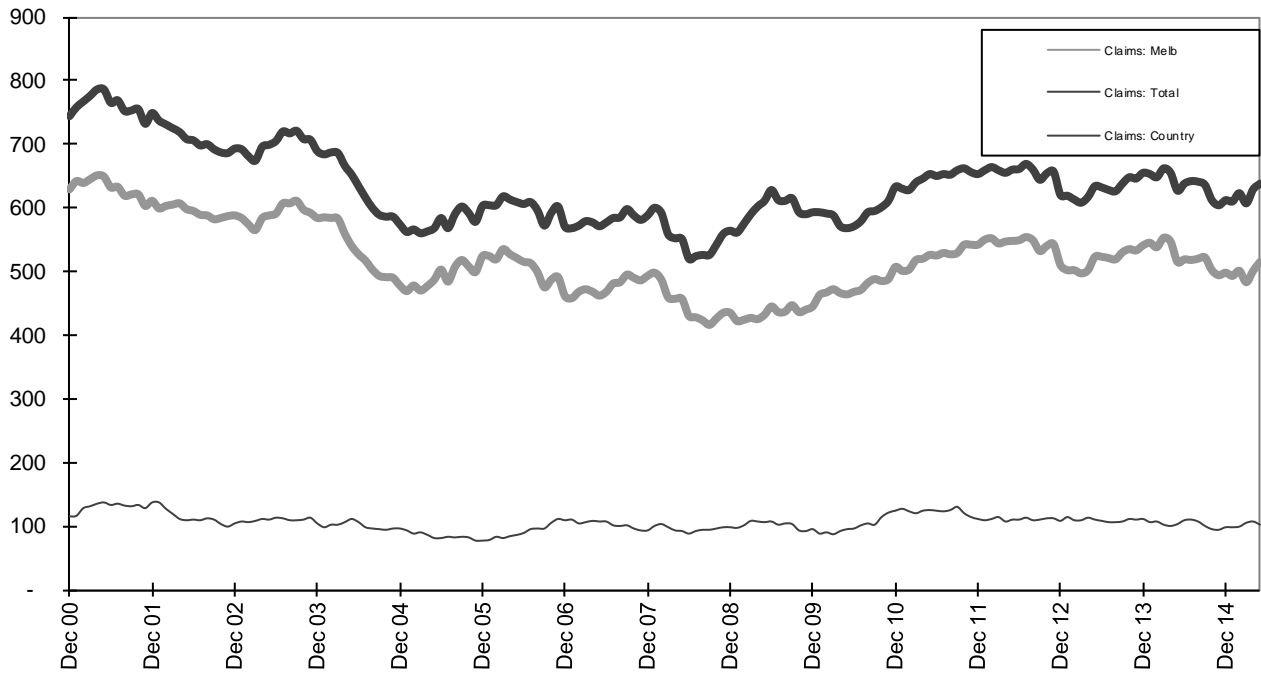
Graph 2b - Driver fatalities (Melbourne/country)



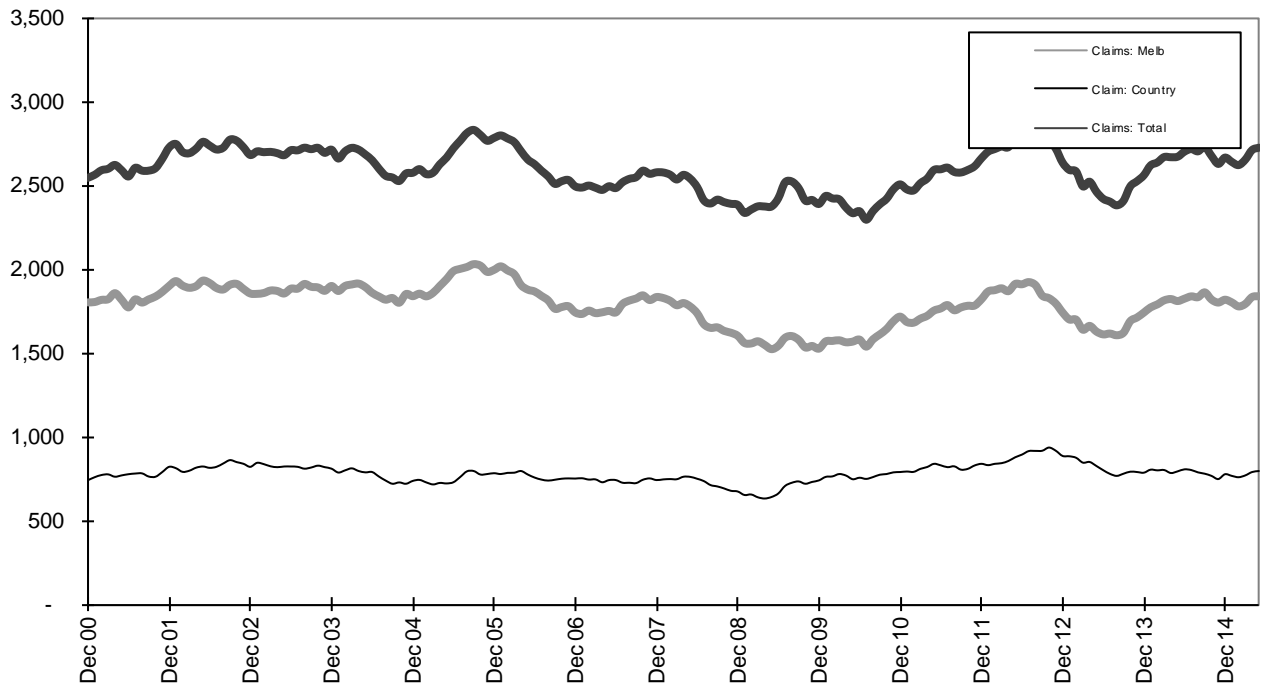
Graph 2c - Passenger fatalities (Melbourne/country)



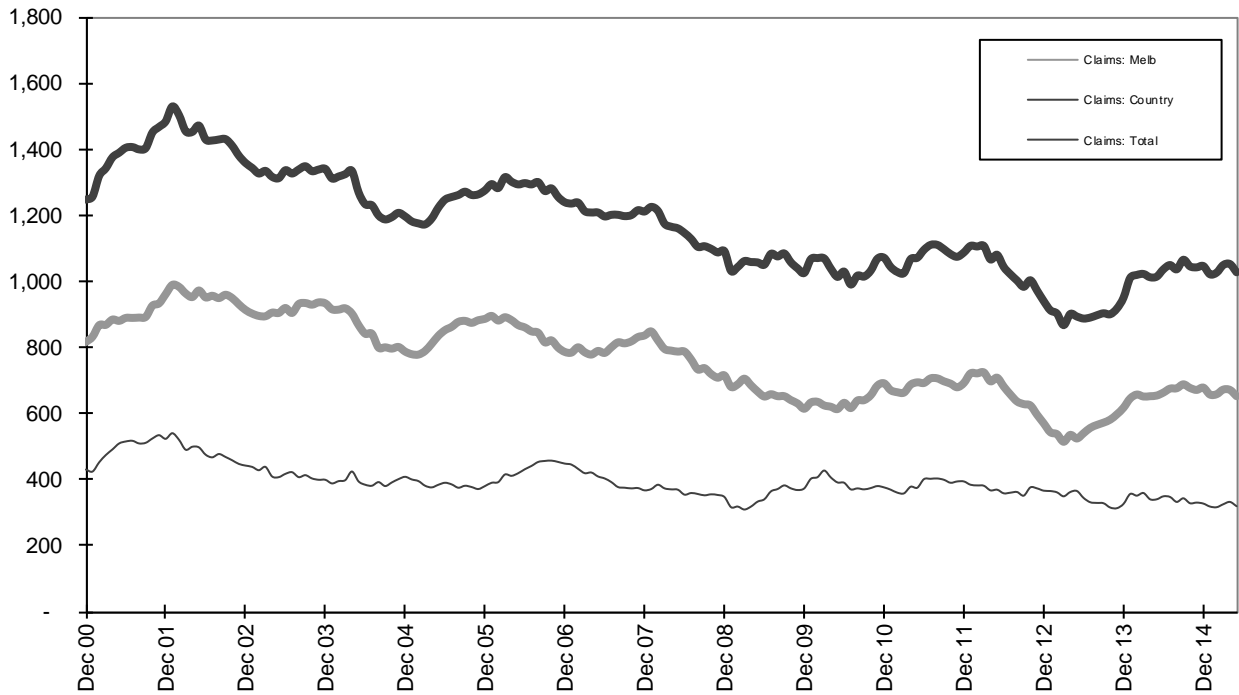
Graph 2d - Motorcyclist fatalities (Melbourne/country)



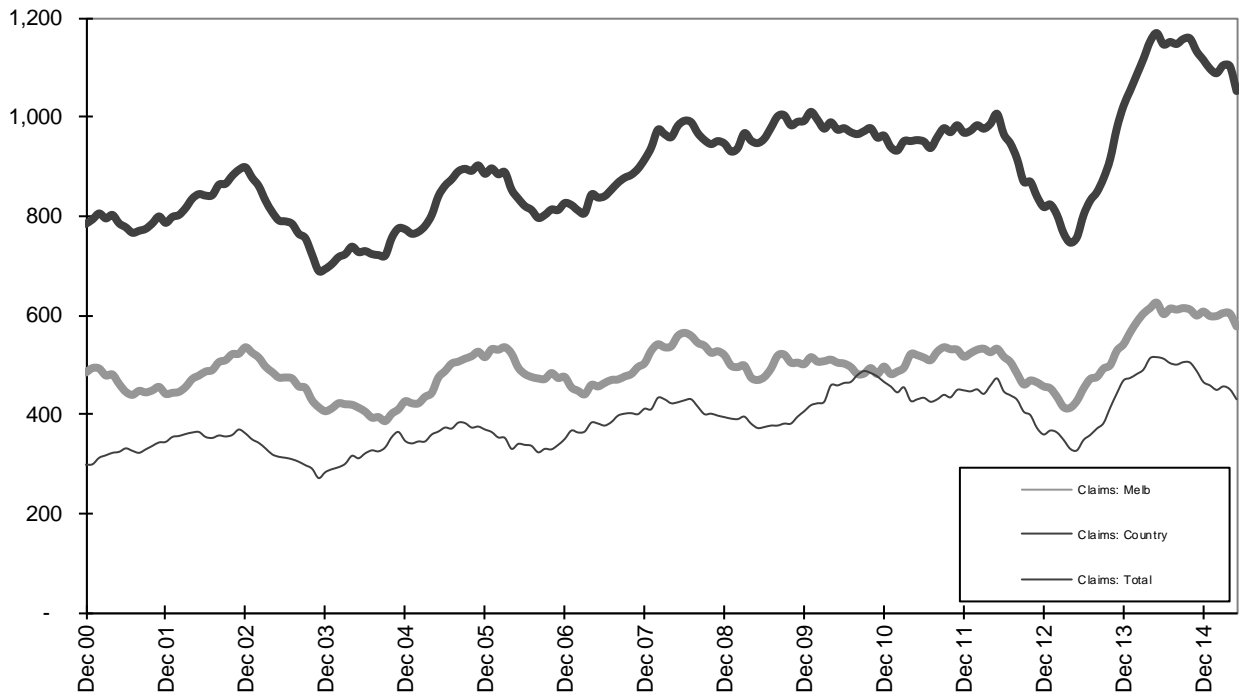
Graph 3a – Pedestrian Claims involving an acute hospital admission (Melbourne/country)



Graph 3b – Driver Claims involving an acute hospital admission (Melbourne/country)



Graph 3c - Passenger Claims involving an acute hospital admission (Melbourne/country)



Graph 3d - Motorcyclist Claims involving an acute hospital admission (Melbourne/country)