



ROAD SAFETY MONTHLY SUMMARY FEBRUARY 2009



TRANSPORT
ACCIDENT
COMMISSION

60 Brougham Street
Geelong Vic 3220
PO Box 742
Geelong Vic 3220
Ausdoc DX 216079 Geelong

Telephone 1300 654 329
STD Toll Free 1800 332 556
Fax: 03 9656 9300
www.tac.vic.gov.au
ABN 22 033 947 623



Contents

Status Report _____	3
Road Toll (updated snapshot)	
Overview	
Tables _____	4-9
Fatalities (year to date and rolling 12 month)	
Serious Injuries (rolling 12 month)	
Overview	
Sex	
Roaduser	
Location	
Age Group	
Alctime	
Police District	
Accident Type	
Victorian Road Deaths – monthly totals since 1951 _____	10
Fatalities by Week (2002 to 2007) _____	11
Alcohol Related Deaths _____	12-13
The National Picture _____	14
Police Enforcement _____	15
Explanations and References _____	16
Alcohol times (“Alctime”) explained	
Useful internet sites	
Graphs (12 month moving totals) _____	17-24

Status Report

Road Toll (to midnight 15 March 2009)

- The road toll stands at 61 for the year, 9% less than at the same time in 2008 (67).
- 31 people died in January and 21 in February on Victorian roads. This compares to 28 and 20 in January and February in 2008.

* Due to a change in coding of accident injury severity following the introduction of the new crash data system by Victoria Police, it is not possible to compare serious injury data from 2006 onwards with previous years' data, as a discontinuity in the data series has been introduced with the introduction of a new reporting system on 1 January 2006.

Category	2009	2008	2007	2009 v 2008		2009 v 2007		5 Year Av
Casualties (Rolling 12 Month Total)								
Fatal (to February)	307	334	322	-27	(-8%)	-15	(-5%)	332
per 10,000 veh	0.77	0.87	0.85	-0.1	(-11%)	-0.08	(-9%)	0.89
per 100,000 pop	5.78	6.40	6.30	-0.62	(-10%)	-0.52	(-8%)	6.54

Accidents (Rolling 12 Month Total)								
Fatal (to February)	281	291	298	-10	(-3%)	-17	(-6%)	300
per 10,000 veh	0.71	0.76	0.79	-0.05	(-7%)	-0.08	(-10%)	0.81
per 100,000 pop	5.29	5.57	5.83	-0.28	(-5%)	-0.54	(-9%)	5.91

Category	2008	2007	2006	2008 v 2007		2008 v 2006		3 Year Av
Casualties (Rolling 12 Month Total)								
*Serious (to Nov)	6,565	7,864	7,098	-1,299	(-17%)	-533	(-8%)	7,176
per 10,000 veh	16.7	20.5	18.9	-3.8	(-19%)	-2.2	(-12%)	18.2
per 100,000 pop	124.1	151.4	139.6	-27.3	(-18%)	-15.5	(-11%)	135.6

Accidents (Rolling 12 Month Total)								
*Serious (to Nov)	5,447	6,334	5,664	-887	(-14%)	-217	(-4%)	5,815
per 10,000 veh	13.8	16.5	15.1	-2.7	(-16%)	-1.3	(-9%)	14.8
per 100,000 pop	103.0	121.9	111.4	-18.9	(-16%)	-8.4	(-8%)	109.9

Note: Data is subject to revision as additional information about known accidents is received, and as new accident reports are received and processed.

Fatalities: January - February

Category	2009	2008	2007	2009 v 2008	2009 v 2007	5 Year Av
Overview						
Fatalities	52	48	46	4	6	53
Accidents	47	44	42	3	5	48
Sex						
Male	31	36	39	-5	-8	39
Female	21	12	7	9	14	14
Roaduser						
Bicyclist	0	0	2	0	-2	1
Driver	28	19	25	9	3	24
Motorcyclist	9	10	5	-1	4	9
Passenger	8	10	10	-2	-2	12
Pedestrian	7	9	4	-2	3	7
Location						
Melbourne	26	20	22	6	4	24
Rural Victoria	26	28	24	-2	2	29
Agegroup						
0-4	1	2	0	-1	1	2
5-15	1	1	2	0	-1	2
16-17	2	0	1	2	1	2
18-20	10	2	9	8	1	6
21-25	3	5	4	-2	-1	5
26-29	2	5	7	-3	-5	5
30-39	8	9	7	-1	1	11
40-49	10	5	7	5	3	7
50-59	8	9	2	-1	6	4
60-69	2	2	3	0	-1	4
70+	4	8	4	-4	0	5
Unknown	1	0	0	1	1	0
Alctime						
High (Melb)	8	10	15	-2	-7	13
High (Rural)	10	12	14	-2	-4	15
High (Vic)	18	22	29	-4	-11	28
Low (Melb)	18	10	7	8	11	11
Low (Rural)	16	16	10	0	6	15
Low (Vic)	34	26	17	8	17	26
Unknown	0	0	0	0	0	0

Fatalities: January - February

Category	2009	2008	2007	2009 v 2008	2009 v 2007	5 Year Av
Police Region and Division						
Region 1	1	3	3	-2	-2	3
1-1 Melbourne	1	2	1	-1	0	1
1-2 Prahran	0	0	1	0	-1	1
1-3 Caulfield	0	0	0	0	0	0
1-4 Moorabbin	0	1	1	-1	-1	1
Region 2	10	11	11	-1	-1	12
2-1 Altona North	4	5	2	-1	2	3
2-2 Geelong	0	2	6	-2	-6	3
2-3 Ballarat	3	2	1	1	2	2
2-4 Horsham	1	1	0	0	1	1
2-5 Warrnambool	2	1	2	1	0	3
Region 3	10	11	9	-1	1	13
3-1 Mill Park	2	0	2	2	0	2
3-2 Broadmeadows	0	1	2	-1	-2	2
3-3 Bendigo	2	5	3	-3	-1	3
3-4 Shepparton	6	4	2	2	4	4
3-5 Mildura	0	1	0	-1	0	2
Region 4	14	12	8	2	6	11
4-1 Rosanna	3	0	0	3	3	1
4-2 Nunawading	2	3	1	-1	1	1
4-3 Knox	7	3	3	4	4	4
4-4 Seymour	2	4	1	-2	1	3
4-5 Wangaratta	0	2	3	-2	-3	1
Region 5	17	11	15	6	2	14
5-1 Frankston	2	4	1	-2	1	2
5-2 Dandenong	5	1	5	4	0	4
5-3 Morwell	5	2	5	3	0	4
5-4 Bairnsdale	5	4	4	1	1	4
Accident Type						
Intersection						
Adjacent direction	1	2	3	-1	-2	3
Opposing direction	1	2	4	-1	-3	2
Other						
Head on	5	6	6	-1	-1	7
Same direction	4	5	3	-1	1	4
Manoeuvre/o'taking	4	0	5	4	-1	3
On path	0	1	1	-1	-1	1
Single vehicle	25	20	17	5	8	24
Other (incl peds)	12	12	7	0	5	10

Fatalities: 12 months to February

Category	08/09	07/08	06/07	08/09 v 07/08	08/09 v 06/07	5 Year Av
Overview						
Fatalities	307	334	322	-27 (-8%)	-15 (-5%)	332
Accidents	281	291	298	-10 (-3%)	-17 (-6%)	300
Sex						
Male	206	240	237	-34 (-14%)	-31 (-13%)	236
Female	101	94	85	7 (7%)	16 (19%)	96
Roaduser						
Bicyclist	9	4	15	5 (125%)	-6 (-40%)	9
Driver	149	167	156	-18 (-11%)	-7 (-4%)	160
Motorcyclist	42	50	40	-8 (-16%)	2 (5%)	45
Passenger	50	67	61	-17 (-25%)	-11 (-18%)	67
Pedestrian	57	46	50	11 (24%)	7 (14%)	51
Location						
Melbourne	172	156	143	16 (10%)	29 (20%)	163
Rural Victoria	135	178	179	-43 (-24%)	-44 (-25%)	169
Agegroup						
0-4	4	5	2	-1 (-20%)	2 (100%)	4
5-15	6	10	9	-4 (-40%)	-3 (-33%)	10
16-17	13	9	11	4 (44%)	2 (18%)	12
18-20	36	32	33	4 (13%)	3 (9%)	36
21-25	42	43	32	-1 (-2%)	10 (31%)	44
26-29	19	27	32	-8 (-30%)	-13 (-41%)	25
30-39	45	56	54	-11 (-20%)	-9 (-17%)	54
40-49	48	38	51	10 (26%)	-3 (-6%)	43
50-59	31	46	32	-15 (-33%)	-1 (-3%)	34
60-69	17	27	19	-10 (-37%)	-2 (-11%)	24
70+	45	41	47	4 (10%)	-2 (-4%)	45
Unknown	1	0	0	1	1	0
Altime						
High (Melb)	79	79	87	0 (0%)	-8 (-9%)	88
High (Rural)	67	72	96	-5 (-7%)	-29 (-30%)	85
High (Vic)	146	151	183	-5 (-3%)	-37 (-20%)	173
Low (Melb)	93	77	56	16 (21%)	37 (66%)	75
Low (Rural)	68	106	83	-38 (-36%)	-15 (-18%)	84
Low (Vic)	161	183	139	-22 (-12%)	22 (16%)	159
Unknown	0	0	0	0	0	0

Fatalities: 12 months to February

Category	08/09	07/08	06/07	08/09 v 07/08	08/09 v 06/07	5 Year Av
Police Region and Division						
Region 1	26	31	22	-5	(-16%)	27
1-1 Melbourne	8	11	5	-3	(-27%)	7
1-2 Prahran	3	7	5	-4	(-57%)	5
1-3 Caulfield	5	6	5	-1	(-17%)	6
1-4 Moorabbin	10	7	7	3	(43%)	9
Region 2	65	68	81	-3	(-4%)	78
2-1 Altona North	17	28	13	-11	(-39%)	19
2-2 Geelong	17	6	18	11	(183%)	15
2-3 Ballarat	18	12	17	6	(50%)	17
2-4 Horsham	5	4	14	1	(25%)	9
2-5 Warrnambool	8	18	19	-10	(-56%)	18
Region 3	66	92	74	-26	(-28%)	78
3-1 Mill Park	12	7	11	5	(71%)	11
3-2 Broadmeadows	17	15	13	2	(13%)	15
3-3 Bendigo	13	21	16	-8	(-38%)	18
3-4 Shepparton	13	23	20	-10	(-43%)	18
3-5 Mildura	11	26	14	-15	(-58%)	16
Region 4	63	70	71	-7	(-10%)	68
4-1 Rosanna	8	4	7	4	(100%)	7
4-2 Nunawading	12	18	13	-6	(-33%)	14
4-3 Knox	21	19	23	2	(11%)	21
4-4 Seymour	18	18	16	0	(0%)	16
4-5 Wangaratta	4	11	12	-7	(-64%)	11
Region 5	87	73	74	14	(19%)	81
5-1 Frankston	23	15	10	8	(53%)	17
5-2 Dandenong	28	20	25	8	(40%)	28
5-3 Morwell	16	20	26	-4	(-20%)	19
5-4 Bairnsdale	20	18	13	2	(11%)	17
Accident Type						
Intersection						
Adjacent direction	23	27	29	-4	(-15%)	31
Opposing direction	6	11	15	-5	(-45%)	12
Other						
Head on	36	43	43	-7	(-16%)	45
Same direction	16	21	16	-5	(-24%)	19
Manoeuvre/o'taking	21	8	15	13	(163%)	15
On path	5	6	8	-1	(-17%)	8
Single vehicle	129	151	131	-22	(-15%)	138
Other (incl peds)	71	67	65	4	(6%)	64

Serious injuries: 12 months to November

Due to a change in coding of accident injury severity following the introduction of the new crash data system by Victoria Police, it is not possible to compare serious injury data from 2006 onwards with previous years' data, as a discontinuity in the data series has been introduced with the introduction of a new reporting system on 1 Jan 2006.

Category	07/08	06/07	05/06	07/08 v 06/07	07/08 v 05/06	3 Year Av
Overview						
Casualties	6,565	7,864	7,098	-1,299 (-17%)	-533 (-8%)	7,176
Accidents	5,447	6,334	5,664	-887 (-14%)	-217 (-4%)	5,815
Sex						
Male	3,869	4,464	4,019	-595 (-13%)	-150 (-4%)	2,470
Female	2,660	3,338	2,898	-678 (-20%)	-238 (-8%)	1,779
Unknown	36	62	181	-26 (-42%)	-145 (-80%)	56
Roaduser						
Bicyclist	461	504	441	-43 (-9%)	20 (5%)	281
Driver	3,067	3,806	3,488	-739 (-19%)	-421 (-12%)	2,072
Motorcyclist	1,016	1,003	886	13 (1%)	130 (15%)	581
Passenger	1,340	1,743	1,570	-403 (-23%)	-230 (-15%)	931
Pedestrian	680	805	665	-125 (-16%)	15 (2%)	430
Unknown	1	3	48	-2	-47	10
Location						
Melbourne	4,713	5,596	4,909	-883 (-16%)	-196 (-4%)	3,044
Rural Victoria	1,792	2,210	2,189	-418 (-19%)	-397 (-18%)	1,238
Unknown	60	58	0	2	60	24
Agegroup						
0-4	51	85	62	-34 (-40%)	-11 (-18%)	40
5-15	284	401	353	-117 (-29%)	-69 (-20%)	208
16-17	185	254	245	-69 (-27%)	-60 (-24%)	137
18-20	741	897	796	-156 (-17%)	-55 (-7%)	487
21-25	906	1,089	966	-183 (-17%)	-60 (-6%)	592
26-29	558	634	556	-76 (-12%)	2 (0%)	350
30-39	1,133	1,313	1,213	-180 (-14%)	-80 (-7%)	732
40-49	890	1,065	985	-175 (-16%)	-95 (-10%)	588
50-59	685	812	631	-127 (-16%)	54 (9%)	426
60-69	501	490	376	11 (2%)	125 (33%)	273
70+	542	584	492	-42 (-7%)	50 (10%)	324
Unknown	89	240	423	-151 (-63%)	-334 (-79%)	150
Altime						
High (Melb)	2,192	2,609	2,358	-417 (-16%)	-166 (-7%)	1,432
High (Rural)	812	979	941	-167 (-17%)	-129 (-14%)	546
High (Vic)	3,004	3,588	3,299	-584 (-16%)	-295 (-9%)	1,978
Low (Melb)	2,521	2,987	2,551	-466 (-16%)	-30 (-1%)	1,612
Low (Rural)	980	1,231	1,248	-251 (-20%)	-268 (-21%)	692
Low (Vic)	3,501	4,218	3,799	-717 (-17%)	-298 (-8%)	2,304
Unknown	60	58	0	2	60	24

Serious injuries: 12 months to November

Due to a change in coding of accident injury severity following the introduction of the new crash data system by Victoria Police, it is not possible to compare serious injury data from 2006 onwards with previous years' data, as a discontinuity in the data series has been introduced with the introduction of a new reporting system on 1 Jan 2006.

Category	07/08	06/07	05/06	07/08 v 06/07	07/08 v 05/06	3 Year Av		
Police Region and Division								
Region 1	1,224	1,221	1,167	3	(0%)	57	(5%)	722
1-1 Melbourne	363	360	345	3	(1%)	18	(5%)	214
1-2 Prahran	233	247	211	-14	(-6%)	22	(10%)	138
1-3 Caulfield	313	309	308	4	(1%)	5	(2%)	186
1-4 Moorabbin	315	305	303	10	(3%)	12	(4%)	185
Region 2	1,309	1,607	1,458	-298	(-19%)	-149	(-10%)	875
2-1 Altona North	519	567	442	-48	(-8%)	77	(17%)	306
2-2 Geelong	382	464	454	-82	(-18%)	-72	(-16%)	260
2-3 Ballarat	200	313	246	-113	(-36%)	-46	(-19%)	152
2-4 Horsham	64	99	109	-35	(-35%)	-45	(-41%)	54
2-5 Warrnambool	144	164	207	-20	(-12%)	-63	(-30%)	103
Region 3	1,227	1,394	1,327	-167	(-12%)	-100	(-8%)	790
3-1 Mill Park	207	357	266	-150	(-42%)	-59	(-22%)	166
3-2 Broadmeadows	486	505	474	-19	(-4%)	12	(3%)	293
3-3 Bendigo	223	182	229	41	(23%)	-6	(-3%)	127
3-4 Shepparton	194	199	210	-5	(-3%)	-16	(-8%)	121
3-5 Mildura	117	151	148	-34	(-23%)	-31	(-21%)	83
Region 4	1,372	1,847	1,621	-475	(-26%)	-249	(-15%)	968
4-1 Rosanna	203	264	243	-61	(-23%)	-40	(-16%)	142
4-2 Nunawading	472	688	539	-216	(-31%)	-67	(-12%)	340
4-3 Knox	426	559	470	-133	(-24%)	-44	(-9%)	291
4-4 Seymour	141	190	227	-49	(-26%)	-86	(-38%)	112
4-5 Wangaratta	130	146	142	-16	(-11%)	-12	(-8%)	84
Region 5	1,373	1,737	1,525	-364	(-21%)	-152	(-10%)	927
5-1 Frankston	384	419	422	-35	(-8%)	-38	(-9%)	245
5-2 Dandenong	648	839	739	-191	(-23%)	-91	(-12%)	445
5-3 Morwell	205	326	211	-121	(-37%)	-6	(-3%)	148
5-4 Bairnsdale	136	153	153	-17	(-11%)	-17	(-11%)	88
Unknown	60	58	0	2		60		24
Accident Type								
Intersection								
Adjacent direction	993	1,292	1,114	-299	(-23%)	-121	(-11%)	680
Opposing direction	700	752	716	-52	(-7%)	-16	(-2%)	434
Other								
Head on	368	479	441	-111	(-23%)	-73	(-17%)	258
Same direction	909	1,253	1,024	-344	(-27%)	-115	(-11%)	637
Manoeuvre/o'taking	405	467	430	-62	(-13%)	-25	(-6%)	260
On path	329	355	305	-26	(-7%)	24	(8%)	198
Single vehicle	2,105	2,385	2,332	-280	(-12%)	-227	(-10%)	1,364
Other (incl peds)	756	881	736	-125	(-14%)	20	(3%)	475

Victorian Road Deaths: monthly totals since 1951

Year	Jan	Feb	Mar	Apr	May	Jun	Jul	Aug	Sep	Oct	Nov	Dec	Totals
1951							61	59	52	38	29	41	
1952	45	40	54	61	54	69	67	55	44	44	31	20	584
1953	23	28	54	58	49	42	50	37	44	27	36	32	480
1954	44	42	28	60	55	36	63	33	25	52	30	41	509
1955	44	36	45	55	48	56	64	44	44	32	40	40	548
1956	34	48	51	67	53	65	71	47	39	39	44	48	606
1957	50	41	46	58	52	54	57	53	51	46	32	49	589
1958	50	38	42	58	54	41	54	53	57	40	57	52	596
1959	50	57	61	50	75	55	42	48	52	55	63	63	671
1960	49	53	57	76	70	70	67	62	61	77	52	66	760
1961	63	57	68	74	58	68	78	82	59	62	60	65	794
1962	65	41	76	78	72	80	70	77	62	53	64	70	808
1963	67	56	65	85	66	68	77	55	55	58	61	67	780
1964	73	71	78	71	83	89	80	89	67	66	62	75	904
1965	63	64	86	88	80	87	79	69	81	77	68	87	929
1966	75	59	75	103	74	86	87	80	75	66	90	85	955
1967	61	79	91	97	81	71	59	67	70	68	60	83	887
1968	70	78	86	78	73	76	73	77	72	80	81	105	949
1969	79	68	79	87	86	77	87	83	87	83	94	101	1,011
1970	85	84	106	80	87	88	110	106	78	95	68	74	1,061
1971	83	75	77	68	76	86	85	72	78	73	74	76	923
1972	61	62	75	82	75	71	98	85	83	62	80	81	915
1973	75	75	95	85	64	66	61	85	89	88	66	86	935
1974	56	62	81	60	70	73	67	62	53	70	80	72	806
1975	67	65	87	73	97	94	57	75	69	66	71	89	910
1976	79	78	88	78	69	79	60	70	82	78	77	100	938
1977	65	71	89	79	65	79	70	91	68	74	96	107	954
1978	75	54	95	63	64	69	68	77	65	84	83	72	869
1979	63	60	86	75	45	64	66	75	69	79	72	93	847
1980	48	55	66	59	47	56	60	53	45	58	61	49	657
1981	69	60	58	61	74	65	61	63	68	71	59	57	766
1982	55	53	59	59	67	45	47	71	53	69	65	66	709
1983	42	59	53	63	62	61	65	51	59	43	54	52	664
1984	65	48	58	50	56	48	46	50	71	53	55	58	658
1985	56	47	50	65	75	50	51	50	58	61	56	64	683
1986	56	50	70	69	59	53	42	54	54	52	59	51	669
1987	62	43	57	52	63	59	62	49	62	61	55	80	705
1988	49	58	69	54	79	50	54	52	64	59	43	70	701
1989	76	65	80	59	67	73	52	65	82	50	41	66	776
1990	48	44	55	39	56	64	41	34	48	35	40	44	548
1991	45	39	70	30	34	29	44	47	41	36	35	53	503
1992	34	33	34	47	33	29	23	27	28	38	30	40	396
1993	27	40	37	39	44	33	33	27	34	39	43	40	436
1994	36	31	44	35	27	33	29	37	17	27	32	30	378
1995	38	35	26	33	34	41	27	34	34	32	38	46	418
1996	40	47	35	38	28	29	30	35	49	24	33	30	418
1997	36	25	30	30	40	22	39	26	26	29	39	35	377
1998	29	29	32	36	31	22	40	19	37	36	49	30	390
1999	32	31	35	35	34	24	35	26	28	38	29	37	384
2000	32	26	46	32	39	32	33	29	36	29	44	29	407
2001	44	30	31	32	31	41	34	37	35	51	41	37	444
2002	32	31	45	31	45	32	27	25	31	30	31	37	397
2003	21	41	36	28	31	28	20	23	23	24	24	31	330
2004	32	22	30	30	46	28	27	26	22	28	25	27	343
2005	33	27	47	21	29	23	30	25	25	33	17	36	346
2006	24	37	23	23	27	23	25	22	43	20	31	39	337
2007	23	23	32	25	26	28	28	20	23	37	26	41	332
2008	28	20	37	25	25	20	27	27	18	25	26	25	303
2009	31	21											52
Ave	51	49	59	57	56	54	54	53	53	52	52	58	638
Max	85	84	106	103	97	94	110	106	89	95	96	107	1,061
Min	21	20	23	21	25	20	20	19	17	20	17	20	303

Fatalities by Week (2004 to 2009)

Week Ending	2004	2005	2006	2007	2008	2009	Cumulative 2009	% Change 2009-2008	12 Month Moving Total
4-Jan	5	4	5	4	4	4	4	0%	303
11-Jan	6	7	2	1	8	11	15	25%	306
18-Jan	8	3	4	7	4	6	21	31%	308
25-Jan	7	15	13	5	3	2	23	21%	307
1-Feb	7	6	5	6	9	8	31	11%	306
8-Feb	3	4	7	6	3	6	37	19%	309
15-Feb	7	4	17	4	5	8	45	25%	312
22-Feb	7	6	8	13	4	4	49	23%	312
1-Mar	4	11	3	14	9	3	52	6%	306
8-Mar	6	6	6	5	8	3	55	-4%	301
15-Mar	8	6	3	3	10	6	61	-9%	297
22-Mar	7	14	10	8	6				
29-Mar	7	14	2	6	9				
5-Apr	6	9	4	8	10				
12-Apr	5	4	3	5	3				
19-Apr	6	6	7	4	6				
26-Apr	11	6	9	6	7				
3-May	9	7	11	5	6				
10-May	11	6	2	10	3				
17-May	10	12	8	2	8				
24-May	8	4	5	7	7				
31-May	12	3	6	15	3				
7-Jun	5	6	4	1	4				
14-Jun	9	5	8	4	7				
21-Jun	10	9	4	7	6				
28-Jun	4	2	1	5	2				
5-Jul	4	7	10	8	8				
12-Jul	6	6	5	9	7				
19-Jul	10	6	8	2	2				
26-Jul	3	7	3	6	6				
2-Aug	5	8	8	1	7				
9-Aug	11	6	4	2	8				
16-Aug	2	6	3	7	6				
23-Aug	5	2	6	9	3				
30-Aug	7	8	2	4	8				
6-Sep	5	3	8	6	2				
13-Sep	7	3	11	7	6				
20-Sep	5	6	19	5	6				
27-Sep	3	13	4	4	3				
4-Oct	5	6	11	13	9				
11-Oct	8	9	2	7	5				
18-Oct	7	8	4	9	5				
25-Oct	3	3	4	5	4				
1-Nov	8	7	7	5	5				
8-Nov	5	6	4	8	3				
15-Nov	8	6	11	5	8				
22-Nov	5	2	6	7	8				
29-Nov	6	3	15	6	5				
6-Dec	7	8	5	16	4				
13-Dec	5	6	6	7	8				
20-Dec	4	5	11	8	5				
27-Dec	9	13	3	5	8				
31-Dec	2	4							
Total	343	346	337	332	303	61			

Alcohol Related Deaths

BAC Fatalities (12 months to December 2008)

- 29% of killed and tested drivers and riders had a BAC at 0.05 g/100ml or over (51 of 178) compared to 29% over the previous 12 month period (62 of 214).
- In Melbourne, 24 drivers/riders killed and tested were at or over 0.05, with 45% of these having a BAC in excess of 0.15 g/100ml. Across rural Victoria, 27 drivers/riders killed and tested were at or over 0.05, with 78% of these having a BAC over 0.15.
- Of the 51 drivers and riders killed and tested at or over 0.05, 18% (9) were aged under 21, 35% (18) were aged 21-29, 20% (10) were aged 30-39 and 27% (14) were aged 40 years and over. In the previous year (62 killed) the corresponding figures were 18% (11), 31% (19), 32% (20) and 19% (12), respectively.

BAC (January - December)

Category	2008	2007	2006	2008 v 2007		2008 v 2006		5 Year Av
Melbourne Drivers and Riders								
<0.05	64	63	67	1	(2%)	-3	(-4%)	65
[a] at 0.05 & above	24	28	13	-4	(-14%)	11		23
% at 0.05 & above	(27%)	(31%)	(16%)					(26%)
[b] >0.15	12	15	8	-3	(-20%)	4		11
%>0.15	(14%)	(16%)	(10%)					(13%)
[b] as a % of [a]	(50%)	(54%)	(62%)					(48%)
BAC Unknown	3	2	2	1	(50%)	1	(50%)	3
Country Drivers and Riders								
<0.05	63	89	88	-26	(-29%)	-25	(-28%)	81
[a] at 0.05 & above	27	34	21	-7	(-21%)	6	(29%)	28
% at 0.05 & above	(30%)	(28%)	(19%)					(26%)
[b] >0.15	20	20	13	0	(0%)	7	(54%)	19
%>0.15	(22%)	(16%)	(12%)					(17%)
[b] as a % of [a]	(74%)	(59%)	(62%)					(67%)
BAC Unknown	2	2	10	0	(0%)	-8	(-80%)	5
Victorian Total Drivers and Riders								
<0.05	127	152	155	-25	(-16%)	-28	(-18%)	145
[a] at 0.05 & above	51	62	34	-11	(-18%)	17	(50%)	51
% at 0.05 & above	(29%)	(29%)	(18%)					(26%)
[b] >0.15	32	35	21	-3	(-9%)	11	(52%)	30
%>0.15	(18%)	(16%)	(11%)					(15%)
[b] as a % of [a]	(63%)	(56%)	(62%)					(58%)
BAC Unknown	5	4	12	1	(25%)	-7	(-58%)	8
Victorian Total Pedestrians								
<0.05	39	32	30	7	(22%)	9	(30%)	33
[a] at 0.05 & above	17	8	20	9	(113%)	-3	(-15%)	14
% at 0.05 & above	(30%)	(20%)	(40%)					(29%)
[b] >0.15	12	6	13	6	(100%)	-1	(-8%)	10
%>0.15	(21%)	(15%)	(26%)					(22%)
[b] as a % of [a]	(71%)	(75%)	(65%)					(75%)
BAC Unknown	3	1	8	2	(200%)	-5	(-63%)	5

BAC (12 months to December)

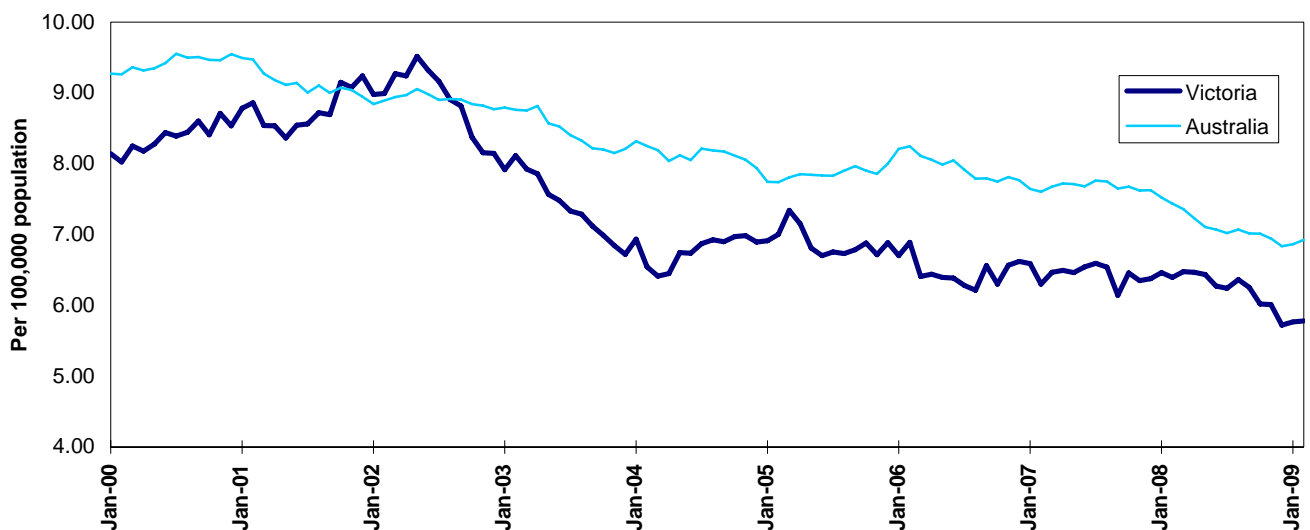
Category	2008	2007	2006	2008 v 2007		2008 v 2006		5 Year Av
Melbourne Drivers and Riders								
<0.05	64	63	67	1	(2%)	-3	(-4%)	65
[a] at 0.05 & above	24	28	13	-4	(-14%)	11	(85%)	23
% at 0.05 & above	(27%)	(31%)	(16%)					(26%)
[b] >0.15	12	15	8	-3	(-20%)	4	(50%)	11
%>0.15	(14%)	(16%)	(10%)					(13%)
[b] as a % of [a]	(50%)	(54%)	(62%)					(48%)
BAC Unknown	3	2	2	1	(50%)	1	(50%)	3
Country Drivers and Riders								
<0.05	63	89	88	-26	(-29%)	-25	(-28%)	81
[a] at 0.05 & above	27	34	21	-7	(-21%)	6	(29%)	28
% at 0.05 & above	(30%)	(28%)	(19%)					(26%)
[b] >0.15	20	20	13	0	(0%)	7	(54%)	19
%>0.15	(22%)	(16%)	(12%)					(17%)
[b] as a % of [a]	(74%)	(59%)	(62%)					(67%)
BAC Unknown	2	2	10	0	(0%)	-8	(-80%)	5
Victorian Total Drivers and Riders								
<0.05	127	152	155	-25	(-16%)	-28	(-18%)	145
[a] at 0.05 & above	51	62	34	-11	(-18%)	17	(50%)	51
% at 0.05 & above	(29%)	(29%)	(18%)					(26%)
[b] >0.15	32	35	21	-3	(-9%)	11	(52%)	30
%>0.15	(18%)	(16%)	(11%)					(15%)
[b] as a % of [a]	(63%)	(56%)	(62%)					(58%)
BAC Unknown	5	4	12	1	(25%)	-7	(-58%)	8
Victorian Total Pedestrians								
<0.05	39	32	30	7	(22%)	9	(30%)	33
[a] at 0.05 & above	17	8	20	9	(113%)	-3	(-15%)	14
% at 0.05 & above	(30%)	(20%)	(40%)					(29%)
[b] >0.15	12	6	13	6	(100%)	-1	(-8%)	10
%>0.15	(21%)	(15%)	(26%)					(22%)
[b] as a % of [a]	(71%)	(75%)	(65%)					(75%)
BAC Unknown	3	1	8	2	(200%)	-5	(-63%)	5

The National Picture

State	Killed (12 months to February)					2009 v 2008	
	2009	2008	2007	2006			
NSW	398	430	465	531	-32	(-7%)	
VIC	307	334	322	347	-27	(-8%)	
QLD	329	355	344	341	-26	(-7%)	
SA	105	118	117	154	-13	(-11%)	
WA	216	216	211	173	0	(0%)	
TAS	47	44	52	57	3	(7%)	
NT	70	56	49	52	14	(25%)	
ACT	13	15	12	25	-2	(-13%)	
AUST TOTAL	1,485	1,568	1,572	1,680	-83	(-5%)	
AUST minus VIC	1,178	1,234	1,250	1,333	-56	(-5%)	

State	Deaths per 10,000 registered vehicles (12 months to February)			Deaths per 100,000 population (12 months to February)		
	2009	2008	2007	2009	2008	2007
NSW	0.87	0.98	1.08	5.70	6.23	6.80
VIC	0.77	0.87	0.85	5.78	6.39	6.30
QLD	1.02	1.15	1.16	7.66	8.45	8.44
SA	0.88	1.01	1.02	6.54	7.42	7.50
WA	1.22	1.26	1.29	9.94	10.21	10.24
TAS	1.19	1.15	1.38	9.42	8.91	10.62
NT	5.60	4.67	4.23	31.71	25.88	23.55
ACT	0.53	0.65	0.53	3.77	4.39	3.63
AUST TOTAL	0.96	1.05	1.08	6.93	7.44	7.60
AUST minus VIC	1.02	1.11	1.16	7.31	7.78	8.03

Victoria v Australia – 12 Month Moving Fatality Rate



Booze-Bus Random Breath Testing

January

	2009	2008	2007	2009 v 2008		2009 v 2007	
Melbourne	117,615	104,771	73,914	12,844	(12%)	43,701	(59%)
Country	25,437	21,471	20,072	3,966	(18%)	5,365	(27%)
Vic Total	143,052	126,242	93,986	16,810	(13%)	49,066	(52%)

12 months to January vs previous 12 months

	2009	2008	2007	2009 v 2008		2009 v 2007	
Melbourne	1,192,200	1,011,369	1,059,646	180,831	(18%)	132,554	(13%)
Country	243,795	259,742	267,544	-15,947	(-6%)	-23,749	(-9%)
Vic Total	1,435,995	1,271,111	1,327,690	164,884	(13%)	108,305	(8%)

Mobile Safety Camera Data

Speed Infringements Issued from Mobile Cameras (monthly totals)

Monthly Average = 46,508

2008

2009

Feb	Mar	Apr	May	Jun	Jul	Aug	Sep	Oct	Nov	Dec	Jan
58,546	45,579	54,153	43,476	33,280	43,778	40,730	44,653	50,920	41,762	45,270	55,949

Excessive Speed Infringements Issued from Mobile Cameras (monthly totals)

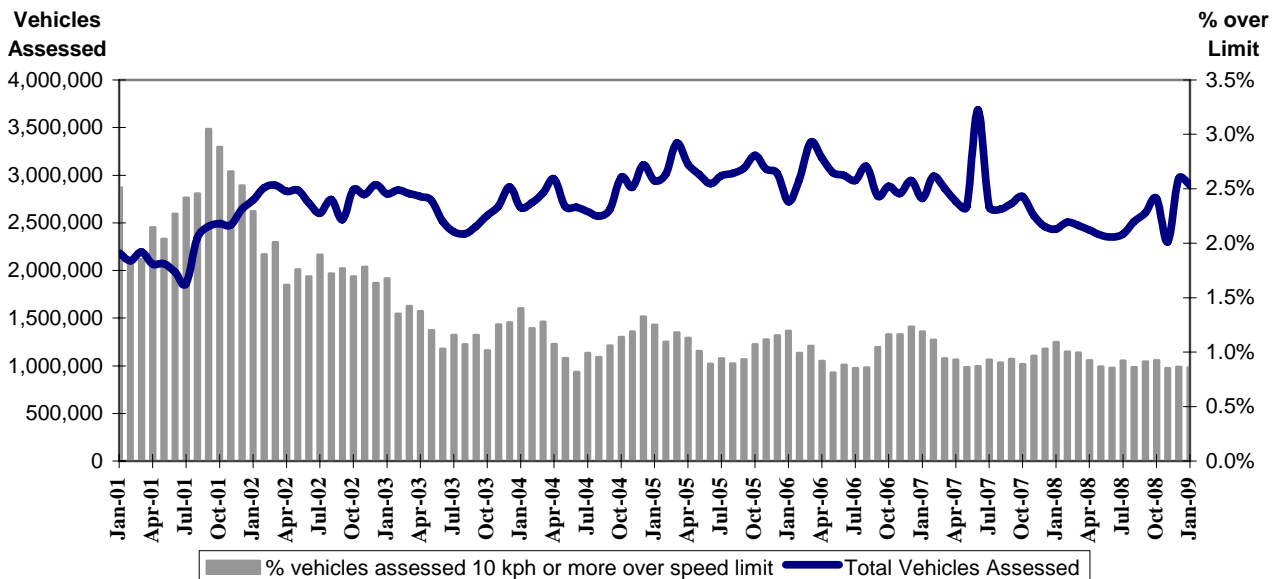
Monthly Average = 367

2008

2009

Feb	Mar	Apr	May	Jun	Jul	Aug	Sep	Oct	Nov	Dec	Jan
483	387	444	356	261	318	345	309	422	325	332	422

Mobile Safety Cameras – Vehicles assessed and percentage of vehicles assessed 10km/h or more over speed limit per month



Explanations and References

Hi-Alcetime is those times of the day and week (*shaded* in the table below) when casualty crashes are **ten times more likely to involve alcohol** than casualty crashes at other (**Lo-Alcetime**) times.

	12am - 6am	6am - 8am	8am - 10am	10am - 2pm	2pm - 4pm	4pm - 6pm	6pm - 12pm
Monday							
Tuesday							
Wednesday							
Thursday							
Friday							
Saturday							
Sunday							

Useful Internet Sites

TAC Sites

- TAC Safety (Road Safety) www.tacsafety.com.au
- TAC How safe is your car www.howsafeisyourcar.com.au
- TAC Learners Log www.learnerslog.com.au
- TAC Motorcycle Safety Website www.spokes.com.au
- TAC Corporate site www.tac.vic.gov.au

Victorian Sites:

- VicRoads www.vicroads.vic.gov.au
- Victorian Police (Operation Countdown) www.operationcountdown.com.au
- Parliamentary Road Safety Committee www.parliament.vic.gov.au/parlrsc/
- ARRB Transport Research www.arrb.com.au
- RACV www.racv.com.au
- Monash University Accident Research Centre www.general.monash.edu.au/muarc
- Roadsafe www.roadsafe.org.au

National and Interstate Sites:

- Australian Transport Safety Bureau www.atsb.gov.au
- Roads and Traffic Authority (NSW) www.rta.nsw.gov.au
- Queensland Transport - Road Safety www.roadsafety.net
- Department of Transport (SA) www.transport.sa.gov.au/index.htm
- Main Roads Western Australia - Road Safety www.mrwa.wa.gov.au

International Sites:

- National Highway Traffic Safety Admin (USA) www.nhtsa.dot.gov
- Swedish Road and Transport Institute (VTI) www.vti.se
- SWOV Institute for Road Safety Research www.swov.nl

Related Sites:

- Australian Drug Foundation www.adf.org.au
- Bicycle Victoria www.bv.com.au

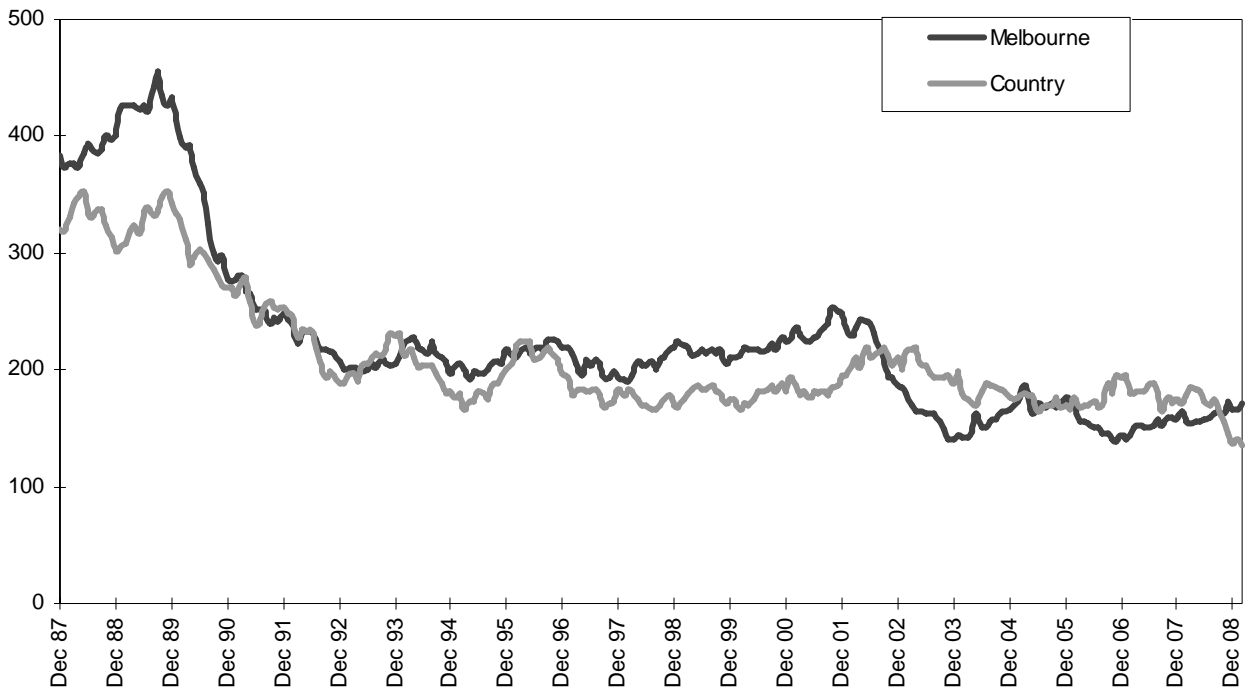
Graphs

Urban/Rural Fatalities	Graphs 1
Road User Group Fatalities	Graphs 2 (a-d)
Pedestrian and Driver/Rider Deaths with a BAC at 0.05 and over	Graphs 3 (a-e)
Single Vehicle Fatalities	Graph 4
Random Breath Testing	Graphs 5 (a-b)

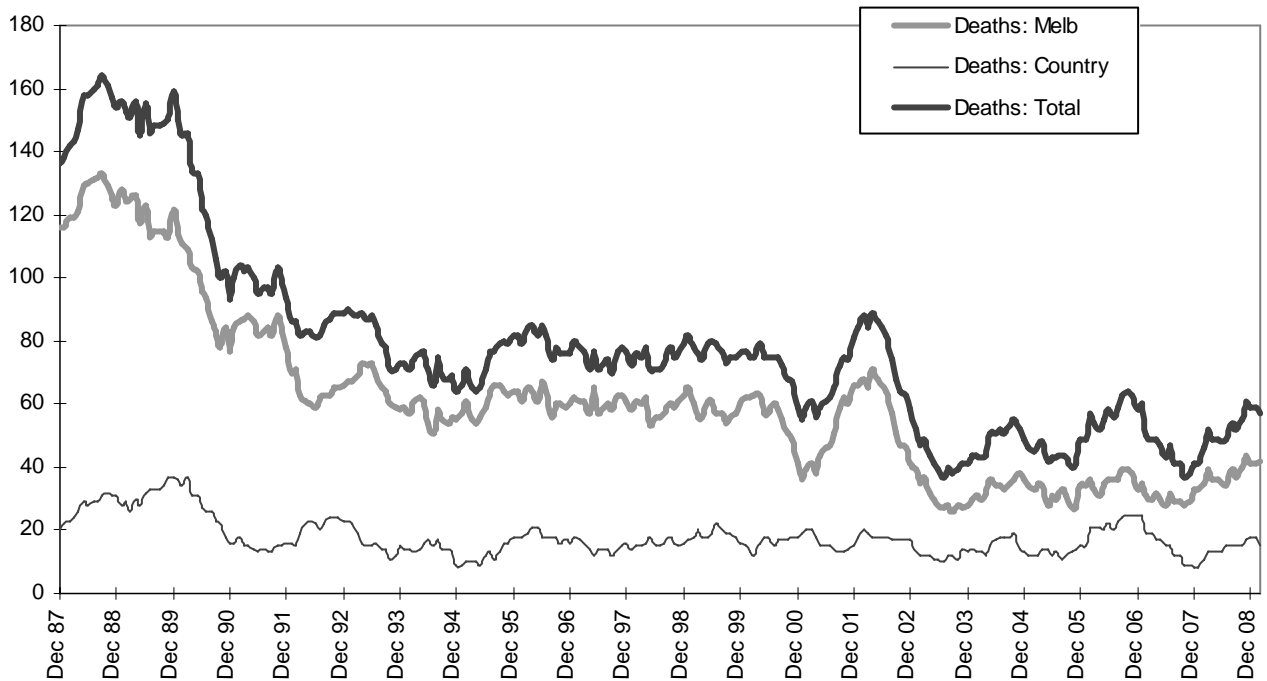
Notes

- All graphs are 12 month moving totals.
- Data is subject to revision as additional information about known accidents is received, and as new accident reports are received and processed.

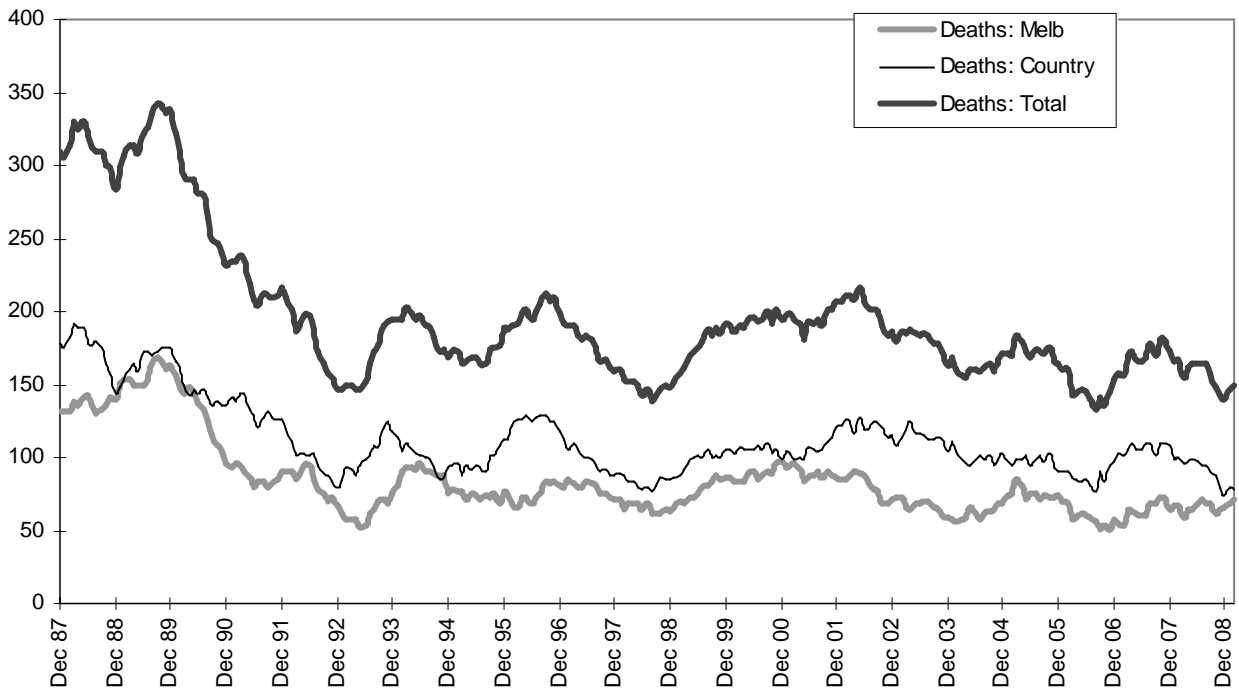
Graph 1 – Melbourne/country fatalities



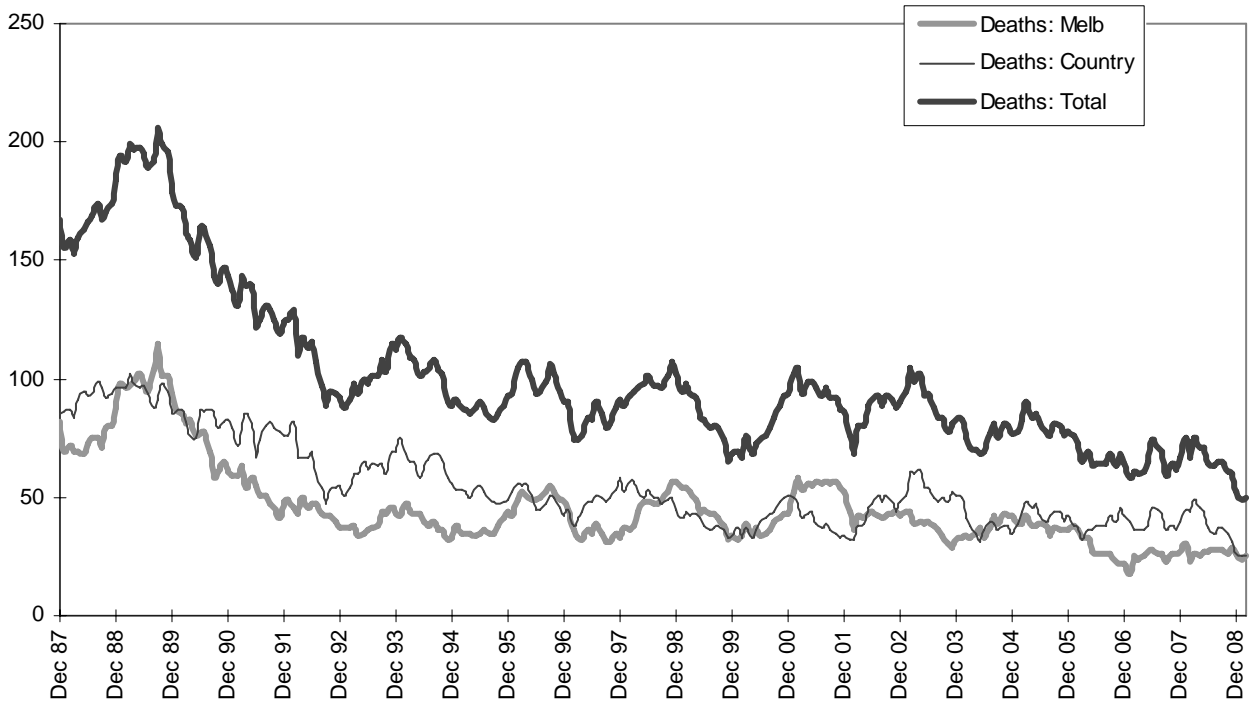
Graph 2a – Pedestrian fatalities (Melbourne/country)



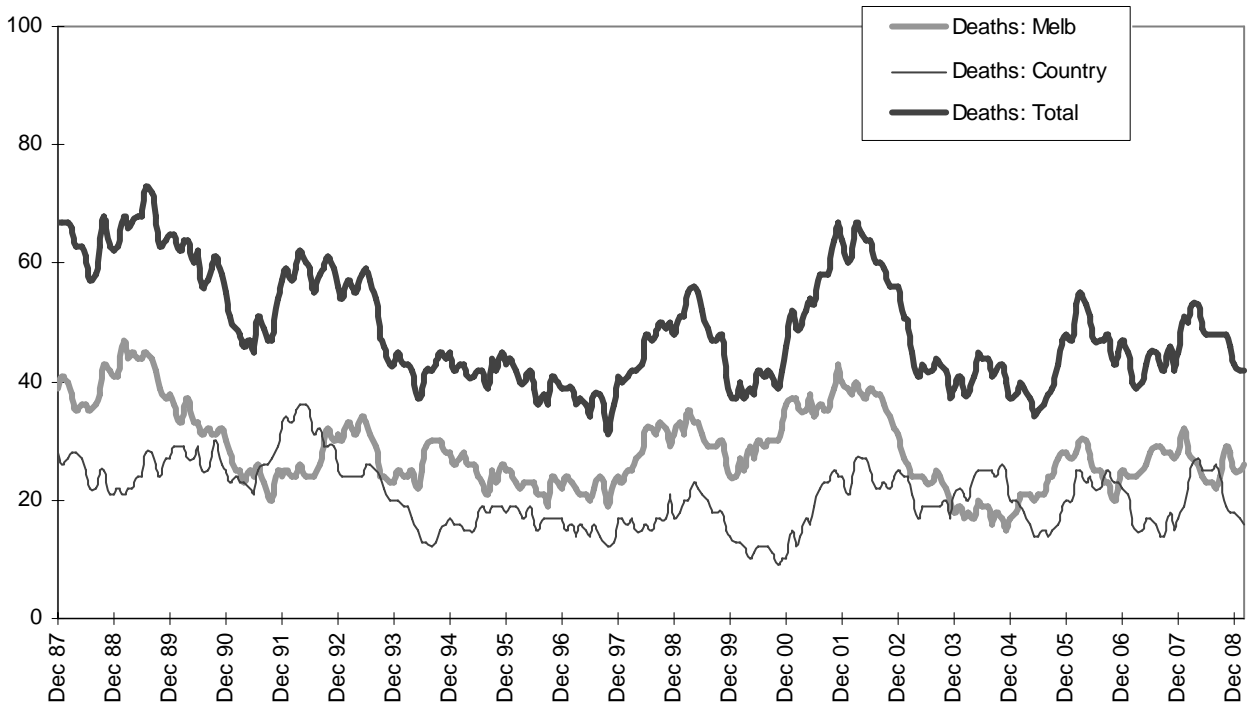
Graph 2b – Driver fatalities (Melbourne/country)



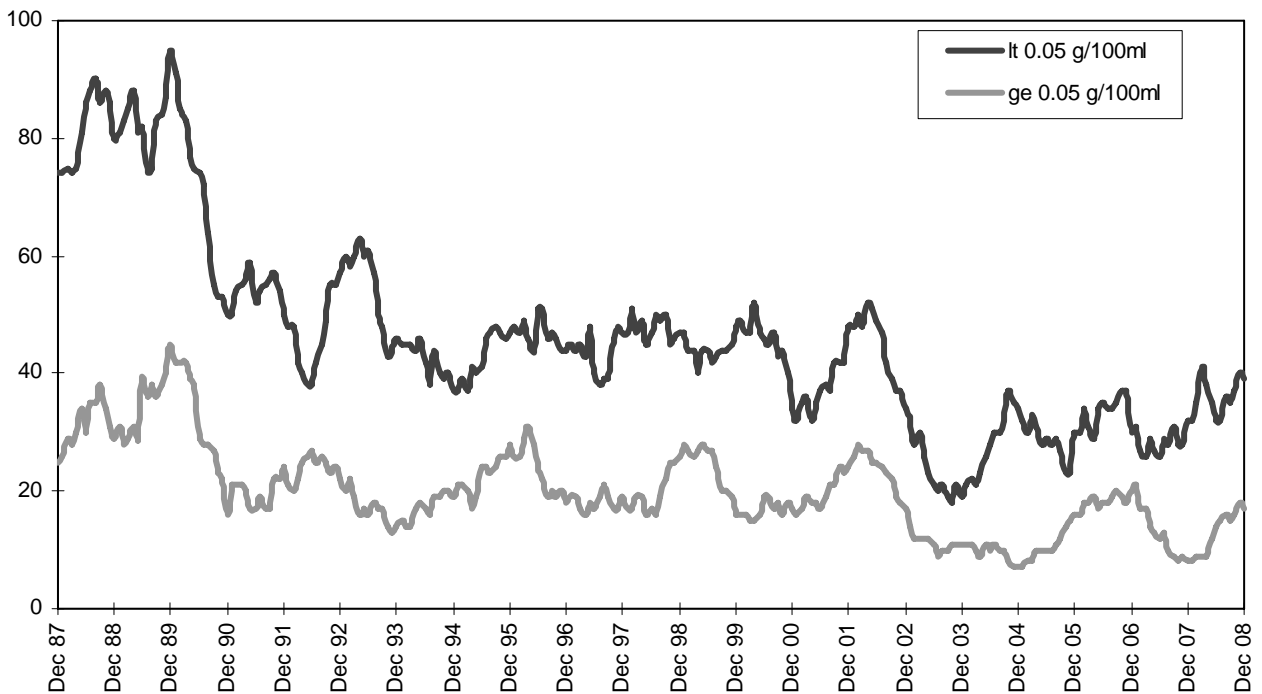
Graph 2c – Passenger fatalities (Melbourne/country)



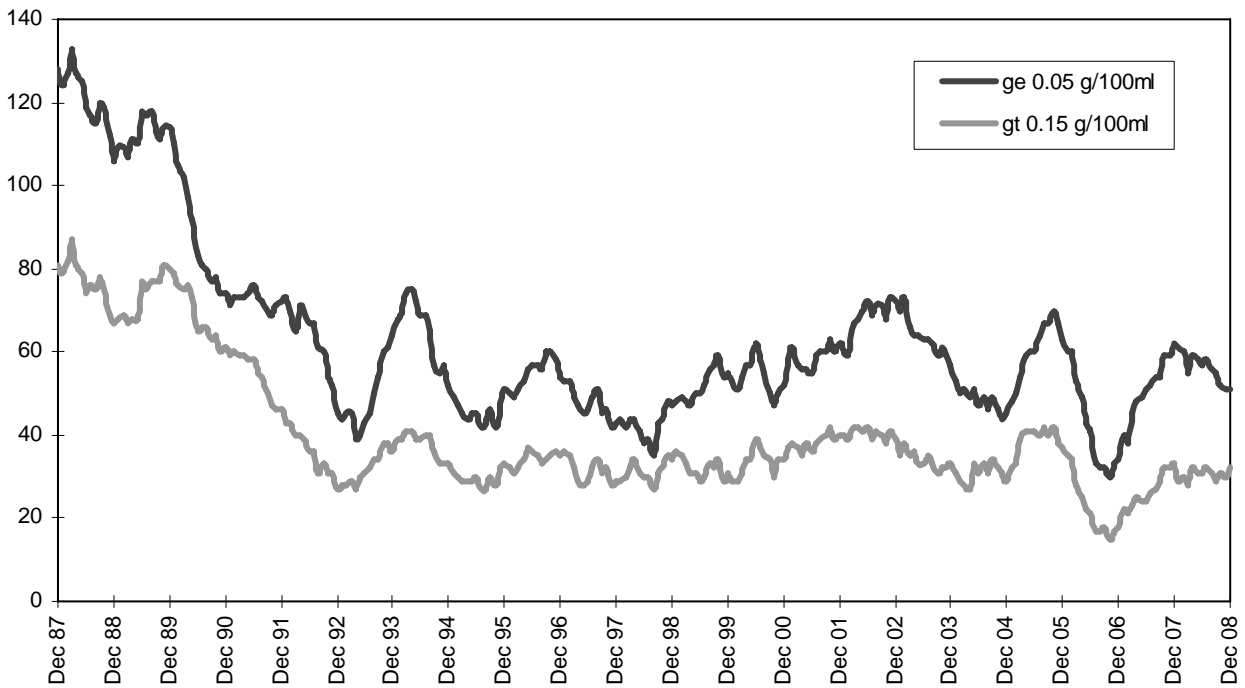
Graph 2d –Motorcyclist fatalities (Melbourne/country)



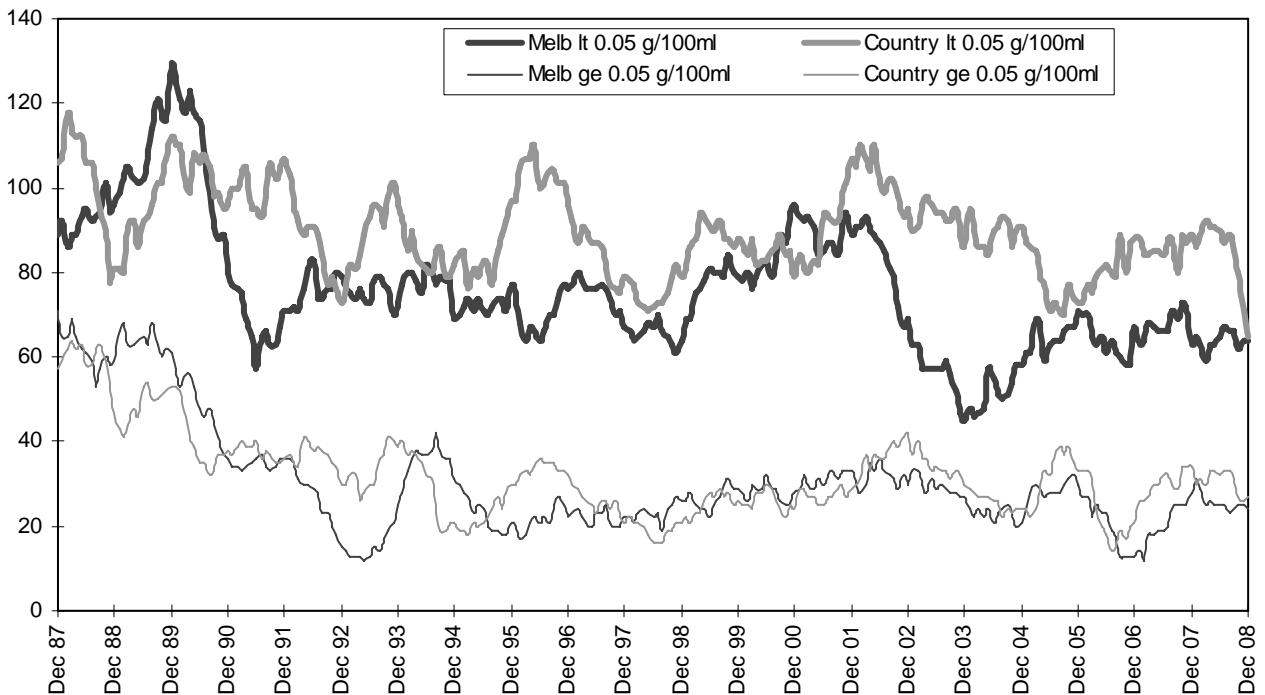
Graph 3a – Pedestrian deaths by BAC



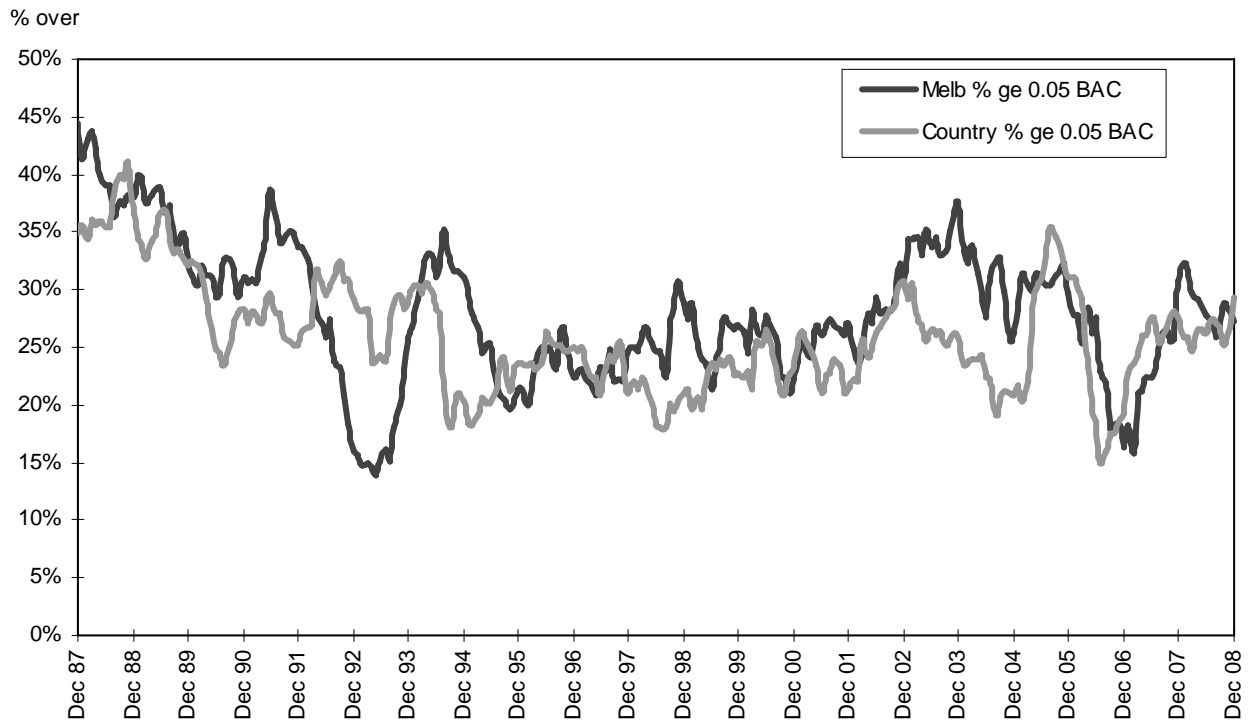
Graph 3b – Driver/rider deaths by BAC



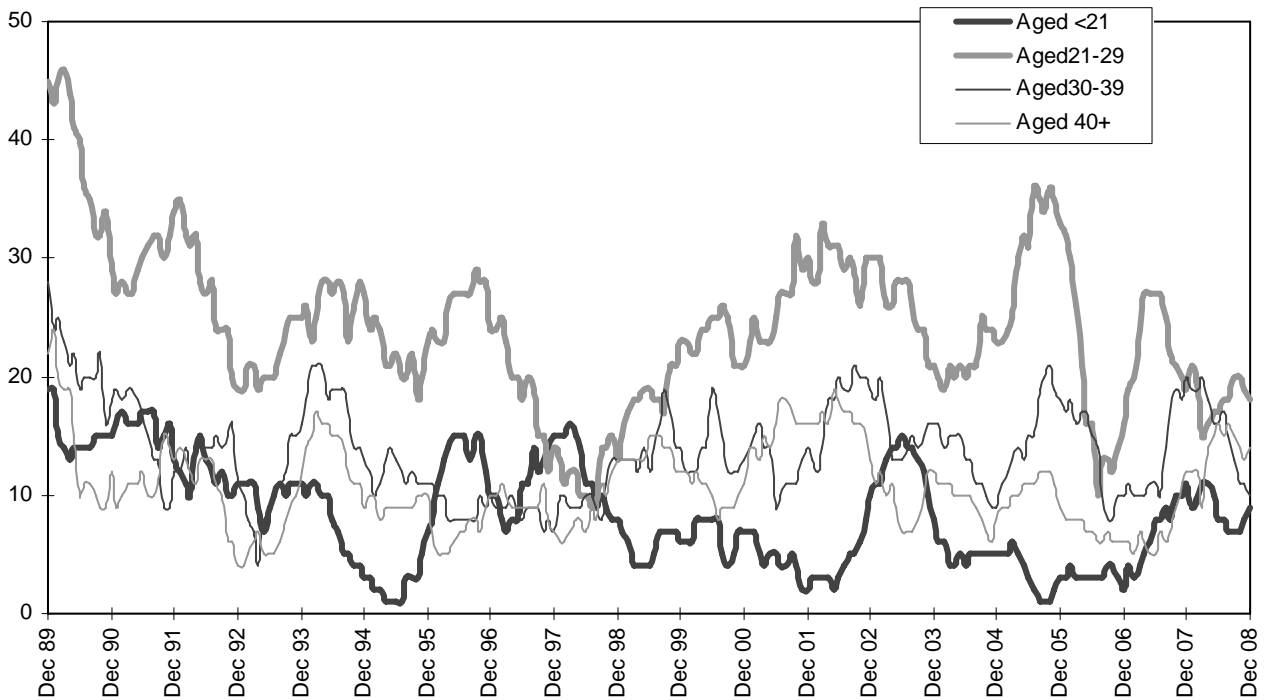
Graph 3c – Driver/rider deaths by BAC (Melbourne/country)



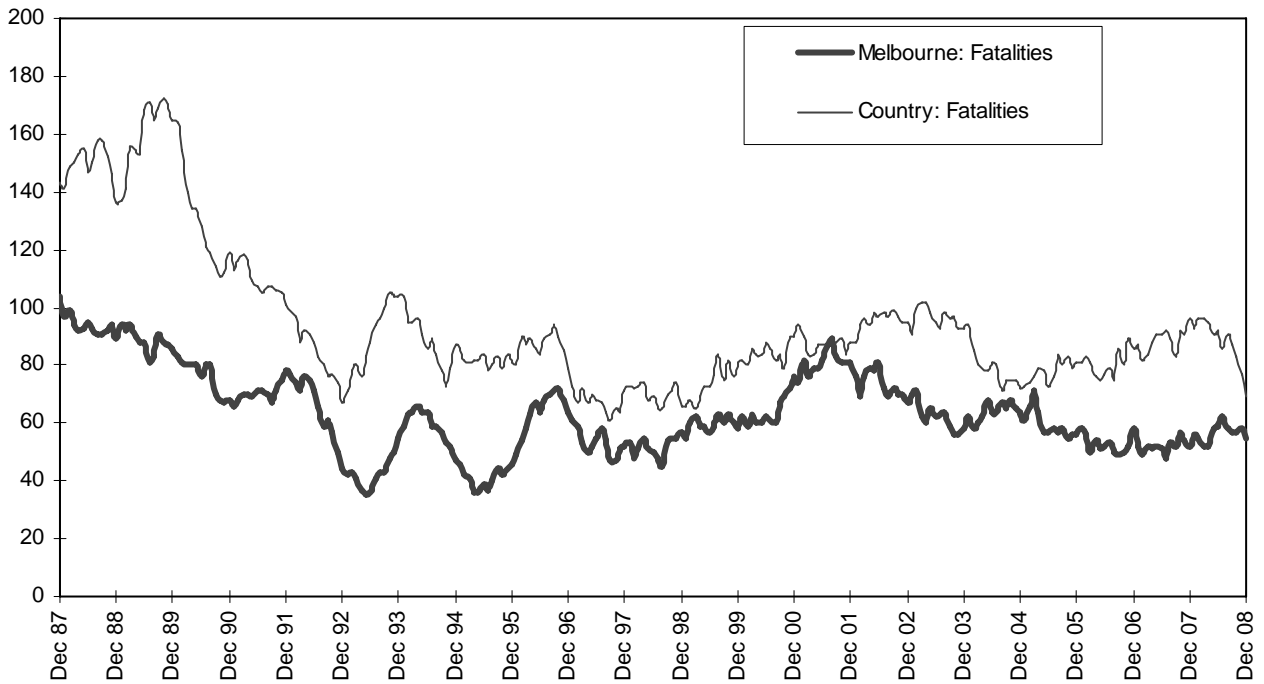
Graph 3d – Proportion of driver/rider deaths with a BAC ge 0.05



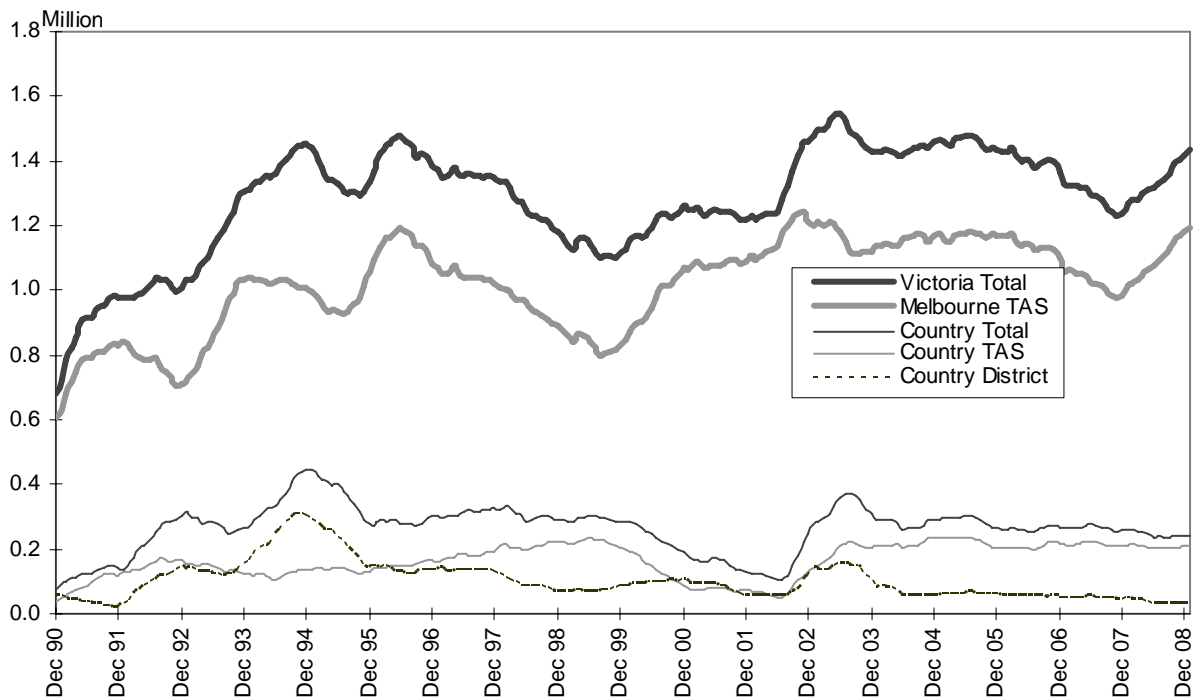
Graph 3e – Killed drivers and riders with a BAC ge 0.05 by age group



Graph 4 – Single vehicle off-path deaths



Graph 5a – Booze-Bus RBTs



Graph 5b – RBT: Percentage positive readings

