



ROAD SAFETY STATISTICAL SUMMARY JUNE 2010



TRANSPORT
ACCIDENT
COMMISSION

60 Brougham Street
Geelong Vic 3220
PO Box 742
Geelong Vic 3220
Ausdoc DX 216079 Geelong

Telephone 1300 654 329
STD Toll Free 1800 332 556
Fax: 03 9656 9300
www.tac.vic.gov.au
ABN 22 033 947 623



Contents

Status Report	3
Road Toll (updated snapshot)	
Tables	4-7
Fatalities (rolling 12 month)	
Claims involving hospitalisation (rolling 12 month)	
Overview	
Sex	
Road user	
Location	
Age Group	
Alctime	
Accident Type	
Police Service Area	
Victorian Road Deaths – monthly totals since 1951	8
Fatalities by Week (2004 to 2009)	9
Alcohol Related Deaths	10
The National Picture	11
Police Enforcement	12
Explanations and References	13-14
Alcohol times (“Alctime”) explained	
Police Service Areas	
Useful internet sites	
Graphs (12 month moving totals)	15-19

Note about the data in this report

- All data provided in this report is the data most recently available at time of production. Typically, fatalities data is updated to the end of report month. Similarly, breath test data and safety camera data is updated to the end of the report month. A 6-month lag applies to TAC claims data, a 2-month lag applies to alcohol related fatalities data

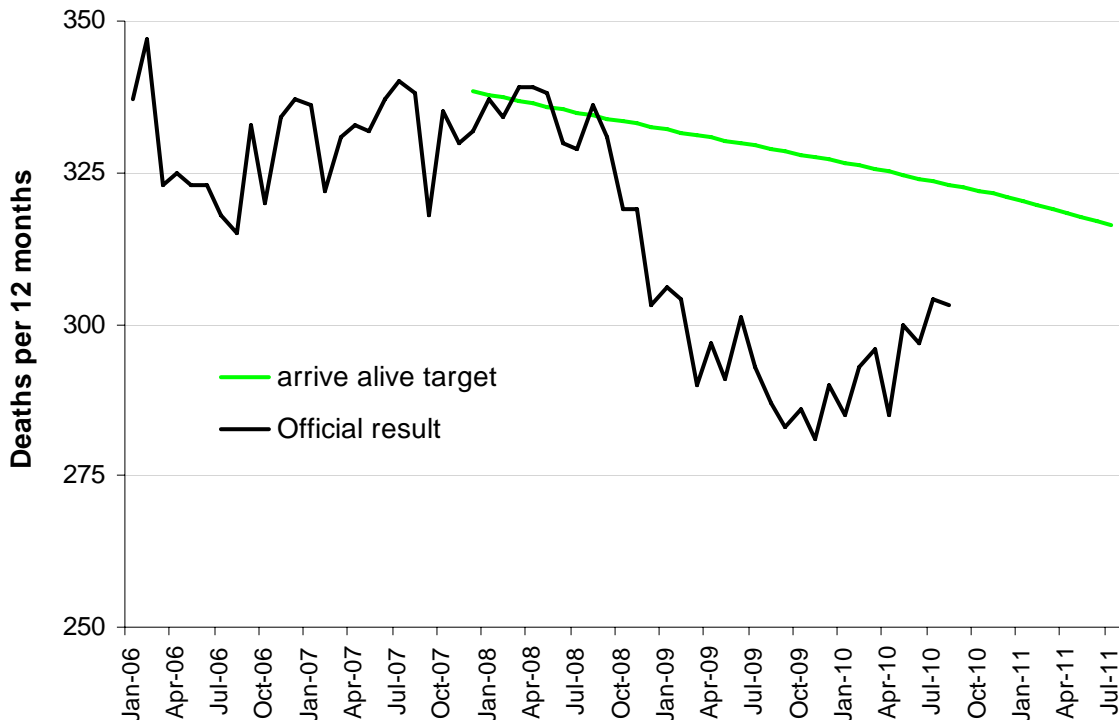
Status Report – Road Toll

Road Toll (year to date, accurate as at midnight 30 June 2010)

- The road toll in 2010 stands at 163, 7% more than at the same stage in 2009 (153).
- 34 people died in May and 27 in June on Victorian roads. This compares to 19 in May 2009 and 30 in June 2009.

Category	2010	2009	2008	2010 v 2009		2010 v 2008		5 Year Av
Casualties (Rolling 12 Month Total)								
Fatal (to June)	297	301	330	-4	(-1%)	-33	(-10%)	318
per 10,000 veh	0.74	0.75	0.85	-0.01	(-1%)	-0.11	(-13%)	0.83
per 100,000 pop	5.51	5.61	6.28	-0.1	(-2%)	-0.77	(-12%)	6.14
Accidents (Rolling 12 Month Total)								
Fatal (to June)	275	271	292	4	(1%)	-17	(-6%)	288
per 10,000 veh	0.67	0.68	0.75	-0.01	(-1%)	-0.08	(-11%)	0.75
per 100,000 pop	5.01	5.05	5.56	-0.04	(-1%)	-0.55	(-10%)	5.56

Victoria – Fatalities, rolling 12 months total



Note: Data is subject to revision as additional information about known accidents is received, and as new accident reports are received and processed.

Fatalities: 12 months to June

Category	2010	2009	2008	2010 v 2009		2010 v 2008		5 Year Av
Overview								
Fatalities	297	301	330	-4	(-1%)	-33	(-10%)	318
Accidents	275	271	292	4	(1%)	-17	(-6%)	288
Sex								
Male	224	202	239	22	(11%)	-15	(-6%)	229
Female	72	99	91	-27	(-27%)	-19	(-21%)	89
Roaduser								
Bicyclist	9	10	5	-1	(-10%)	4	(80%)	8
Driver	146	140	165	6	(4%)	-19	(-12%)	152
Motorcyclist	51	38	48	13	(34%)	3	(6%)	46
Passenger	46	54	64	-8	(-15%)	-18	(-28%)	60
Pedestrian	45	59	48	-14	(-24%)	-3	(-6%)	51
Location								
Melbourne	139	167	157	-28	(-17%)	-18	(-11%)	153
Rural Victoria	158	134	173	24	(18%)	-15	(-9%)	165
Agegroup								
0-4	4	7	3	-3	(-43%)	1	(33%)	4
5-15	8	8	7	0	(0%)	1	(14%)	10
16-17	7	10	11	-3	(-30%)	-4	(-36%)	11
18-20	24	42	28	-18	(-43%)	-4	(-14%)	34
21-25	27	32	51	-5	(-16%)	-24	(-47%)	38
26-29	24	21	24	3	(14%)	0	(0%)	25
30-39	46	45	54	1	(2%)	-8	(-15%)	52
40-49	39	44	45	-5	(-11%)	-6	(-13%)	43
50-59	37	33	41	4	(12%)	-4	(-10%)	33
60-69	31	18	19	13	(72%)	12	(63%)	23
70+	49	41	47	8	(20%)	2	(4%)	44
Altime								
High (Melb)	79	79	79	0	(0%)	0	(0%)	82
High (Rural)	71	64	79	7	(11%)	-8	(-10%)	80
High (Vic)	150	143	158	7	(5%)	-8	(-5%)	162
Low (Melb)	60	88	78	-28	(-32%)	-18	(-23%)	71
Low (Rural)	87	70	94	17	(24%)	-7	(-7%)	85
Low (Vic)	147	158	172	-11	(-7%)	-25	(-15%)	156
Accident Type								
Intersection								
Adjacent direction	22	17	32	5	(29%)	-10	(-31%)	25
Opposing direction	6	4	11	2	(50%)	-5	(-45%)	10
Mid-block/other								
Head on	39	37	40	2	(5%)	-1	(-3%)	42
Same direction	21	16	16	5	(31%)	5	(31%)	18
Manoeuvre/o'taking	15	25	10	-10	(-40%)	5	(50%)	16
On path	8	5	7	3	(60%)	1	(14%)	7
Single vehicle	129	129	151	0	(0%)	-22	(-15%)	136
Other (incl peds)	57	68	63	-11	(-16%)	-6	(-10%)	65

Fatalities: 12 months to June

Category	2010	2009	2008	2010 v 2009		2010 v 2008		5 Year Av
Police Service Area (based on Local Government Area (see p.13))								
BALLARAT	3	3	5	0	(0%)	-2	(-40%)	5
BANYULE	1	4	0	-3	(-75%)	1		2
BASS COAST	8	5	3	3	(60%)	5	(167%)	6
BAW BAW	6	5	9	1	(20%)	-3	(-33%)	7
BAYSIDE	1	1	4	0	(0%)	-3	(-75%)	2
BENALLA	10	9	15	1	(11%)	-5	(-33%)	10
BENDIGO	17	4	12	13	(325%)	5	(42%)	10
BOROONDARA	6	7	5	-1	(-14%)	1	(20%)	5
BRIMBANK	6	5	8	1	(20%)	-2	(-25%)	6
CAMPASPE	3	10	11	-7	(-70%)	-8	(-73%)	9
CARDINIA	5	5	4	0	(0%)	1	(25%)	5
CASEY	7	11	14	-4	(-36%)	-7	(-50%)	11
CENTRAL GOLDFIELDS	2	2	6	0	(0%)	-4	(-67%)	4
CORANGAMITE	7	4	4	3	(75%)	3	(75%)	7
DANDENONG	7	10	7	-3	(-30%)	0	(0%)	7
DAREBIN	1	5	6	-4	(-80%)	-5	(-83%)	4
EAST GIPPSLAND	9	13	16	-4	(-31%)	-7	(-44%)	9
FRANKSTON	2	12	5	-10	(-83%)	-3	(-60%)	5
GEELONG	11	7	4	4	(57%)	7	(175%)	8
GLEN EIRA	4	5	2	-1	(-20%)	2	(100%)	4
HOBSONS BAY	1	2	7	-1	(-50%)	-6	(-86%)	4
HORSHAM	4	1	4	3	(300%)	0	(0%)	3
HUME	9	10	4	-1	(-10%)	5	(125%)	8
KINGSTON	6	5	7	1	(20%)	-1	(-14%)	5
KNOX	5	4	4	1	(25%)	1	(25%)	4
LA TROBE	7	5	6	2	(40%)	1	(17%)	6
MACEDON RANGES	9	8	8	1	(13%)	1	(13%)	8
MANNINGHAM	7	4	1	3	(75%)	6	(600%)	3
MARIBYRNONG	2	1	5	1	(100%)	-3	(-60%)	3
MAROONDAH	2	0	3	2		-1	(-33%)	3
MELBOURNE	2	6	8	-4	(-67%)	-6	(-75%)	6
MELTON	5	9	6	-4	(-44%)	-1	(-17%)	6
MILDURA	5	3	8	2	(67%)	-3	(-38%)	5
MITCHELL	11	6	7	5	(83%)	4	(57%)	8
MONASH	7	5	6	2	(40%)	1	(17%)	6
MOONEE VALLEY	1	4	6	-3	(-75%)	-5	(-83%)	4
MOORABOOL	6	8	5	-2	(-25%)	1	(20%)	6
MORELAND	4	6	3	-2	(-33%)	1	(33%)	4
MORNINGTON PENINSULA	8	8	17	0	(0%)	-9	(-53%)	10
NILLUMBIK	0	2	0	-2	(-100%)	0		1
NORTHERN GRAMPIANS	3	6	1	-3	(-50%)	2	(200%)	4
PORT PHILLIP	3	1	3	2	(200%)	0	(0%)	2
SHEPPARTON	3	8	8	-5	(-63%)	-5	(-63%)	7
SOUTHERN GRAMPIANS	3	8	8	-5	(-63%)	-5	(-63%)	6
STONNINGTON	0	1	2	-1	(-100%)	-2	(-100%)	1
SURF COAST	2	2	6	0	(0%)	-4	(-67%)	3
SWAN HILL	5	3	6	2	(67%)	-1	(-17%)	9
WANGARATTA	12	2	11	10	(500%)	1	(9%)	6
WARRNAMBOOL	6	3	1	3	(100%)	5	(500%)	5
WELLINGTON	1	8	6	-7	(-88%)	-5	(-83%)	7
WHITEHORSE	7	2	3	5	(250%)	4	(133%)	4
WHITTLESEA	13	8	3	5	(63%)	10	(333%)	7
WODONGA	5	1	2	4	(400%)	3	(150%)	4
WYNDHAM	8	7	1	1	(14%)	7	(700%)	6
YARRA	3	2	1	1	(50%)	2	(200%)	3
YARRA RANGES	6	15	13	-9	(-60%)	-7	(-54%)	12

Claims involving hospital admission: 12 months to December (claim acceptance date)

Category	2010	2009	2008	2010 v 2009	2010 v 2008	5 Year Av		
Overview								
Hospital admission claims	5,359	5,624	5,791	-265	(-5%)	-432	(-7%)	318
Sex								
Male	3,176	3,281	3,361	-105	(-3%)	-185	(-6%)	3284
Female	2,183	2,343	2,430	-160	(-7%)	-247	(-10%)	2368
Roaduser								
Bicyclist	311	279	311	32	(11%)	0	(0%)	288
Driver	2,365	2,376	2,583	-11	(-0%)	-218	(-8%)	2520
Motorcyclist	975	946	914	29	(3%)	61	(7%)	909
Passenger	1,005	1,084	1,211	-79	(-7%)	-206	(-17%)	1163
Pedestrian	586	561	589	25	(4%)	-3	(-1%)	582
Tram/train	19	11	10	8	(73%)	9	(90%)	10
Location								
Melbourne	3,316	3,576	4,011	-260	(-7%)	-695	(-17%)	3770
Rural Victoria	1697	1619	1710	78	(5%)	-13	(-1%)	1706
Agegroup								
0-4	43	55	40	-12	(-22%)	3	(8%)	49
5-15	191	231	246	-40	(-17%)	-55	(-22%)	233
16-17	157	151	176	6	(4%)	-19	(-11%)	169
18-20	588	627	621	-39	(-6%)	-33	(-5%)	621
21-25	680	742	804	-62	(-8%)	-124	(-15%)	756
26-29	419	414	470	5	(1%)	-51	(-11%)	449
30-39	922	935	983	-13	(-1%)	-61	(-6%)	972
40-49	808	781	826	27	(3%)	-18	(-2%)	818
50-59	584	644	631	-60	(-9%)	-47	(-7%)	605
60-69	382	448	437	-66	(-15%)	-55	(-13%)	402
70+	585	596	557	-11	(-2%)	28	(5%)	577
Altime								
High (Melb)	1550	1615	1861	-65	(-4%)	-311	(-17%)	1745
High (Rural)	796	712	718	84	(12%)	78	(11%)	734
High (Vic)	2531	2590	2634	-59	(-2%)	-103	(-4%)	2583
Low (Melb)	1766	1961	2150	-195	(-10%)	-384	(-18%)	2025
Low (Rural)	901	907	992	-6	(-1%)	-91	(-9%)	972
Low (Vic)	2828	3034	3157	-206	(-7%)	-329	(-10%)	3070
Accident Type								
Intersection								
Adjacent direction	833	806	903	27	(3%)	-70	(-8%)	857
Opposing direction	436	436	456	0	(0%)	-20	(-4%)	456
Mid-block/other								
Head on	304	334	334	-30	(-9%)	-30	(-9%)	319
Same direction	739	760	848	-21	(-3%)	-109	(-13%)	764
Manoeuvre/o'taking	302	340	280	-38	(-11%)	22	(8%)	290
On path	208	211	195	-3	(-1%)	13	(7%)	200
Single vehicle	1629	1646	1714	-17	(-1%)	-85	(-5%)	1656
Other (incl peds)	906	820	736	86	(10%)	170	(23%)	761

Note: excludes rejected claims and claims for interstate crashes

Claims involving hospital admission: 12 months to December (claim acceptance date)

Category	2010	2009	2008	2010 v 2009		2010 v 2008		5 Year Av
Police Service Area (based on Local Government Area (see p.13))								
BALLARAT	76	74	68	2	(3%)	8	(12%)	65
BANYULE	53	76	59	-23	(-30%)	-6	(-10%)	64
BASS COAST	66	76	112	-10	(-13%)	-46	(-41%)	86
BAW BAW	39	38	56	1	(3%)	-17	(-30%)	46
BAYSIDE	64	57	66	7	(12%)	-2	(-3%)	68
BENALLA	87	77	83	10	(13%)	4	(5%)	80
BENDIGO	84	89	84	-5	(-6%)	0	(0%)	84
BOROONDARA	123	118	147	5	(4%)	-24	(-16%)	139
BRIMBANK	135	168	192	-33	(-20%)	-57	(-30%)	160
CAMPASPE	79	64	84	15	(23%)	-5	(-6%)	86
CARDINIA	77	85	89	-8	(-9%)	-12	(-13%)	81
CASEY	210	206	262	4	(2%)	-52	(-20%)	216
CENTRAL GOLDFIELDS	20	25	20	-5	(-20%)	0	(0%)	21
CORANGAMITE	63	70	45	-7	(-10%)	18	(40%)	66
DANDENONG	140	169	197	-29	(-17%)	-57	(-29%)	177
DAREBIN	98	98	114	0	(0%)	-16	(-14%)	108
EAST GIPPSLAND	49	55	51	-6	(-11%)	-2	(-4%)	56
FRANKSTON	125	133	130	-8	(-6%)	-5	(-4%)	132
GEELONG	227	201	245	26	(13%)	-18	(-7%)	230
GLEN EIRA	94	100	107	-6	(-6%)	-13	(-12%)	106
HOBSONS BAY	58	74	79	-16	(-22%)	-21	(-27%)	70
HORSHAM	23	21	36	2	(10%)	-13	(-36%)	35
HUME	159	143	195	16	(11%)	-36	(-18%)	168
KINGSTON	137	139	123	-2	(-1%)	14	(11%)	142
KNOX	106	144	138	-38	(-26%)	-32	(-23%)	133
LA TROBE	40	56	63	-16	(-29%)	-23	(-37%)	56
MACEDON RANGES	81	65	68	16	(25%)	13	(19%)	73
MANNINGHAM	56	65	93	-9	(-14%)	-37	(-40%)	74
MARIBYRNONG	70	78	73	-8	(-10%)	-3	(-4%)	75
MAROONDAH	58	74	71	-16	(-22%)	-13	(-18%)	73
MELBOURNE	188	152	184	36	(24%)	4	(2%)	192
MELTON	47	45	54	2	(4%)	-7	(-13%)	47
MILDURA	25	33	36	-8	(-24%)	-11	(-31%)	31
MITCHELL	89	113	123	-24	(-21%)	-34	(-28%)	109
MONASH	154	155	191	-1	(-1%)	-37	(-19%)	166
MOONEE VALLEY	82	106	123	-24	(-23%)	-41	(-33%)	112
MOORABOOL	133	89	74	44	(49%)	59	(80%)	88
MORELAND	113	147	150	-34	(-23%)	-37	(-25%)	143
MORNINGTON PENINSULA	145	175	168	-30	(-17%)	-23	(-14%)	175
NILLUMBIK	26	37	29	-11	(-30%)	-3	(-10%)	32
NORTHERN GRAMPIANS	26	42	41	-16	(-38%)	-15	(-37%)	38
PORT PHILLIP	113	120	154	-7	(-6%)	-41	(-27%)	146
SHEPPARTON	82	75	76	7	(9%)	6	(8%)	87
SOUTHERN GRAMPIANS	34	43	36	-9	(-21%)	-2	(-6%)	39
STONNINGTON	104	115	111	-11	(-10%)	-7	(-6%)	121
SURF COAST	57	44	53	13	(30%)	4	(8%)	50
SWAN HILL	44	39	53	5	(13%)	-9	(-17%)	44
WANGARATTA	70	59	57	11	(19%)	13	(23%)	64
WARRNAMBOOL	42	28	49	14	(50%)	-7	(-14%)	41
WELLINGTON	78	62	46	16	(26%)	32	(70%)	64
WHITEHORSE	116	123	143	-7	(-6%)	-27	(-19%)	139
WHITTLESEA	105	110	117	-5	(-5%)	-12	(-10%)	111
WODONGA	51	66	65	-15	(-23%)	-14	(-22%)	56
WYNDHAM	105	108	134	-3	(-3%)	-29	(-22%)	114
YARRA	93	77	102	16	(21%)	-9	(-9%)	91
YARRA RANGES	190	194	201	-4	(-2%)	-11	(-5%)	204

Victorian Road Deaths: monthly totals since 1951

Year	Jan	Feb	Mar	Apr	May	Jun	Jul	Aug	Sep	Oct	Nov	Dec	Totals
1951							61	59	52	38	29	41	
1952	45	40	54	61	54	69	67	55	44	44	31	20	584
1953	23	28	54	58	49	42	50	37	44	27	36	32	480
1954	44	42	28	60	55	36	63	33	25	52	30	41	509
1955	44	36	45	55	48	56	64	44	44	32	40	40	548
1956	34	48	51	67	53	65	71	47	39	39	44	48	606
1957	50	41	46	58	52	54	57	53	51	46	32	49	589
1958	50	38	42	58	54	41	54	53	57	40	57	52	596
1959	50	57	61	50	75	55	42	48	52	55	63	63	671
1960	49	53	57	76	70	70	67	62	61	77	52	66	760
1961	63	57	68	74	58	68	78	82	59	62	60	65	794
1962	65	41	76	78	72	80	70	77	62	53	64	70	808
1963	67	56	65	85	66	68	77	55	55	58	61	67	780
1964	73	71	78	71	83	89	80	89	67	66	62	75	904
1965	63	64	86	88	80	87	79	69	81	77	68	87	929
1966	75	59	75	103	74	86	87	80	75	66	90	85	955
1967	61	79	91	97	81	71	59	67	70	68	60	83	887
1968	70	78	86	78	73	76	73	77	72	80	81	105	949
1969	79	68	79	87	86	77	87	83	87	83	94	101	1,011
1970	85	84	106	80	87	88	110	106	78	95	68	74	1,061
1971	83	75	77	68	76	86	85	72	78	73	74	76	923
1972	61	62	75	82	75	71	98	85	83	62	80	81	915
1973	75	75	95	85	64	66	61	85	89	88	66	86	935
1974	56	62	81	60	70	73	67	62	53	70	80	72	806
1975	67	65	87	73	97	94	57	75	69	66	71	89	910
1976	79	78	88	78	69	79	60	70	82	78	77	100	938
1977	65	71	89	79	65	79	70	91	68	74	96	107	954
1978	75	54	95	63	64	69	68	77	65	84	83	72	869
1979	63	60	86	75	45	64	66	75	69	79	72	93	847
1980	48	55	66	59	47	56	60	53	45	58	61	49	657
1981	69	60	58	61	74	65	61	63	68	71	59	57	766
1982	55	53	59	59	67	45	47	71	53	69	65	66	709
1983	42	59	53	63	62	61	65	51	59	43	54	52	664
1984	65	48	58	50	56	48	46	50	71	53	55	58	658
1985	56	47	50	65	75	50	51	50	58	61	56	64	683
1986	56	50	70	69	59	53	42	54	54	52	59	51	669
1987	62	43	57	52	63	59	62	49	62	61	55	80	705
1988	49	58	69	54	79	50	54	52	64	59	43	70	701
1989	76	65	80	59	67	73	52	65	82	50	41	66	776
1990	48	44	55	39	56	64	41	34	48	35	40	44	548
1991	45	39	70	30	34	29	44	47	41	36	35	53	503
1992	34	33	34	47	33	29	23	27	28	38	30	40	396
1993	27	40	37	39	44	33	33	27	34	39	43	40	436
1994	36	31	44	35	27	33	29	37	17	27	32	30	378
1995	38	35	26	33	34	41	27	34	34	32	38	46	418
1996	40	47	35	38	28	29	30	35	49	24	33	30	418
1997	36	25	30	30	40	22	39	26	26	29	39	35	377
1998	29	29	32	36	31	22	40	19	37	36	49	30	390
1999	32	31	35	35	34	24	35	26	28	38	29	37	384
2000	32	26	46	32	39	32	33	29	36	29	44	29	407
2001	44	30	31	32	31	41	34	37	35	51	41	37	444
2002	32	31	45	31	45	32	27	25	31	30	31	37	397
2003	21	41	36	28	31	28	20	23	23	24	24	31	330
2004	32	22	30	30	46	28	27	26	22	28	25	27	343
2005	33	27	47	21	29	23	30	25	25	33	17	36	346
2006	24	37	23	23	27	23	25	22	43	20	31	39	337
2007	23	23	32	25	26	28	28	20	23	37	26	41	332
2008	28	20	37	25	25	20	27	27	18	25	26	25	303
2009	31	18	23	32	19	30	19	21	14	28	21	34	290
2010	26	26	26	21	34	27							160
Ave	51	48	58	56	56	54	54	52	52	52	51	57	643
Max	85	84	106	103	97	94	110	106	89	95	96	107	1,061
Min	21	18	23	21	19	20	19	19	14	20	17	20	303

Fatalities by Week (2005 to 2010)

Week Ending	2005	2006	2007	2008	2009	2010	Cumulative 2010	% Change 2010-2009	12 Month Moving Total
3-Jan	4	4	3	3	3	1	1	-67%	288
10-Jan	6	2	2	6	11	7	8	-43%	284
17-Jan	3	4	7	7	6	5	13	-35%	283
24-Jan	13	11	5	2	2	4	17	-23%	285
31-Jan	7	3	6	10	9	9	26	-16%	285
7-Feb	6	5	6	3	4	8	34	-3%	289
14-Feb	3	6	4	4	8	4	38	-12%	285
21-Feb	7	17	12	4	2	10	48	7%	293
28-Feb	11	9	1	9	4	4	52	6%	293
7-Mar	6	2	13	8	2	5	57	12%	296
14-Mar	5	6	5	8	7	7	64	10%	296
21-Mar	15	3	3	9	2	4	68	13%	298
28-Mar	14	10	9	9	8	9	77	13%	299
4-Apr	9	3	4	8	7	4	81	8%	296
11-Apr	3	4	10	4	6	6	87	7%	296
18-Apr	7	3	5	5	8	8	95	7%	296
25-Apr	5	6	4	8	11	2	97	-3%	287
2-May	7	9	6	6	4	3	100	-4%	286
9-May	6	11	4	4	7	4	104	-6%	283
16-May	12	3	7	7	3	10	114	0%	290
23-May	5	6	5	5	1	8	122	6%	297
30-May	3	7	7	6	4	10	132	11%	303
6-Jun	2	6	15	3	6	5	137	10%	302
13-Jun	8	4	2	5	7	7	144	9%	302
20-Jun	8	7	4	5	8	8	152	9%	302
27-Jun	3	5	7	6	6	6	158	8%	302
4-Jul	8	1	3	5	8	7	165	7%	301
11-Jul	6	8	10	10	7	3	168	4%	297
18-Jul	6	7	6	2	2	3	171	5%	298
25-Jul	7	6	5	4	7	7	178	5%	298
1-Aug	7	4	5	9	3	10	188	9%	305
8-Aug	7	7	2	6	5	6	194	9%	306
15-Aug	6	5	2	6	7	5	199	8%	304
22-Aug	2	4	7	5	4	6	205	8%	306
29-Aug	7	5	9	6	1	0	205	8%	305
5-Sep	3	2	2	4	4	3	208	7%	304
12-Sep	4	8	7	5	2	6	214	9%	308
19-Sep	4	11	5	5	6	1	215	6%	303
26-Sep	13	18	8	5	2				
3-Oct	7	5	4	9	2				
10-Oct	6	9	12	5	6				
17-Oct	11	5	6	4	7				
24-Oct	4	4	11	5	7				
31-Oct	7	2	5	3	9				
7-Nov	6	9	5	4	4				
14-Nov	6	3	8	7	8				
21-Nov	2	10	4	10	5				
28-Nov	3	7	7	3	3				
5-Dec	7	16	6	4	6				
12-Dec	6	3	16	9	4				
19-Dec	5	7	5	4	11				
26-Dec	13	11	10	9	10				
31-Dec	5	4	6	1	4				
Total	346	337	332	303	290	215			

Alcohol Related Deaths

BAC Fatalities (12 months to April 2010)

- 24% of killed and tested drivers and riders had a BAC at 0.05 g/100ml or over (41 of 172) compared to 25% over the previous 12 month period (43 of 169).
- In Melbourne, 21 drivers/riders killed and tested were at or over 0.05, with 38% of these having a BAC in excess of 0.15 g/100ml. Across rural Victoria, 20 drivers/riders killed and tested were at or over 0.05, with 65% of these having a BAC over 0.15.
- Of the 41 drivers and riders killed and tested at or over 0.05, 15% (6) were aged under 21, 39% (16) were aged 21-29, 27% (11) were aged 30-39 and 20% (8) were aged 40 years and over. In the previous year (43 killed) the corresponding figures were 19% (8), 28% (12), 19% (8) and 35% (15), respectively.

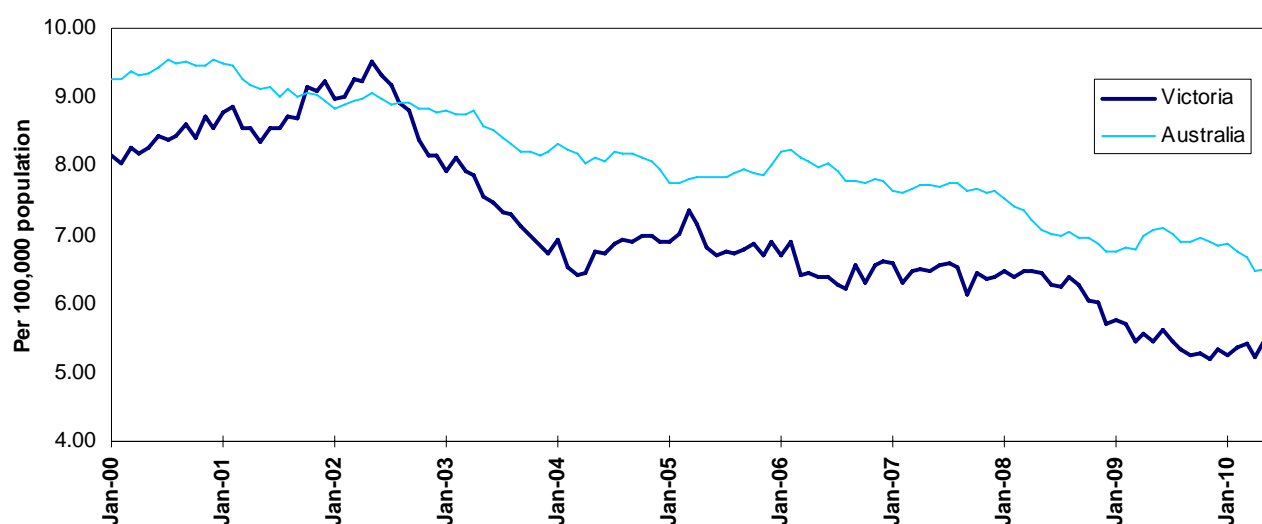
Category	2010	2009	2008	2010 v 2009	2010 v 2008	5 Year Av
Melbourne Drivers and Riders						
<0.05	55	63	63	-8	(-13%)	62
[a] at 0.05 & above	21	17	25	4	(24%)	21
% at 0.05 & above	(28%)	(21%)	(28%)			(25%)
[b] >0.15	8	10	12	-2	(-20%)	9
%>0.15	(11%)	(13%)	(14%)			(11%)
[b] as a % of [a]	(38%)	(59%)	(48%)			(43%)
BAC Unknown	5	3	1	2	(67%)	3
Country Drivers and Riders						
<0.05	76	63	90	13	(21%)	78
[a] at 0.05 & above	20	26	32	-6	(-23%)	26
% at 0.05 & above	(21%)	(29%)	(26%)			(25%)
[b] >0.15	13	17	20	-4	(-24%)	17
%>0.15	(14%)	(19%)	(16%)			(16%)
[b] as a % of [a]	(65%)	(65%)	(63%)			(64%)
BAC Unknown	7	2	1	5	(250%)	5
Victorian Total Drivers and Riders						
<0.05	131	126	153	5	(4%)	140
[a] at 0.05 & above	41	43	57	-2	(-5%)	47
% at 0.05 & above	(24%)	(25%)	(27%)			(25%)
[b] >0.15	21	27	32	-6	(-22%)	26
%>0.15	(12%)	(16%)	(15%)			(14%)
[b] as a % of [a]	(51%)	(63%)	(56%)			(54%)
BAC Unknown	12	5	2	7	(140%)	7
Victorian Total Pedestrians						
<0.05	32	35	38	-3	(-9%)	33
[a] at 0.05 & above	8	21	9	-13	(-62%)	14
% at 0.05 & above	(20%)	(38%)	(19%)			(30%)
[b] >0.15	3	10	8	-7	(-70%)	9
%>0.15	(8%)	(18%)	(17%)			(19%)
[b] as a % of [a]	(38%)	(48%)	(89%)			(62%)
BAC Unknown	6	4	2	2	(50%)	4

The National Picture

State	Killed (12 months to June)					2010 v 2009
	2010	2009	2008	2007		
NSW	453	433	376	443	20	(5%)
VIC	297	301	330	337	-4	(-1%)
QLD	270	351	331	367	-81	(-23%)
SA	118	128	107	105	-10	(-8%)
WA	184	201	221	225	-17	(-8%)
TAS	44	50	41	56	-6	(-12%)
NT	35	56	69	49	-21	(-38%)
ACT	20	13	14	17	7	(54%)
AUST TOTAL	1,421	1,533	1,489	1,599	-112	(-7%)
AUST minus VIC	1,124	1,232	1,159	1,262	-108	(-9%)

State	Deaths per 10,000 registered vehicles (12 months to June)			Deaths per 100,000 population (12 months to June)		
	2010	2009	2008	2010	2009	2008
NSW	0.98	0.95	0.84	6.32	6.16	5.43
VIC	0.73	0.75	0.85	5.41	5.61	6.28
QLD	0.80	1.08	1.05	6.04	8.08	7.82
SA	0.96	1.07	0.91	7.23	7.94	6.72
WA	0.97	1.11	1.28	8.09	9.14	10.35
TAS	1.08	1.26	1.05	8.72	9.99	8.27
NT	2.63	4.40	5.67	15.40	25.18	31.73
ACT	0.80	0.53	0.59	5.64	3.74	4.09
AUST TOTAL	0.89	0.98	0.98	6.42	7.09	7.03
AUST minus VIC	0.95	1.06	1.03	6.76	7.58	7.27

Victoria v Australia – 12 Month Moving Fatality Rate



Booze-Bus Random Breath Testing

12 months to June 2010 (monthly totals)

	2009						2010					
	Jul	Aug	Sep	Oct	Nov	Dec	Jan	Feb	Mar	Apr	May	Jun
Melbourne	91,302	90,377	91,393	90,050	77,312	83,002	99,374	88,214	88,492	100,588	89,275	85,838
Country	18,425	19,281	18,070	18,227	13,035	26,331	23,837	17,657	13,776	20,869	13,669	13,900
Vic Total	109,727	109,658	109,463	108,277	90,347	109,333	123,211	105,871	102,268	121,457	102,944	99,738

12 months to June vs previous 12 months

	2010	2009	2008	2010 v 2009	2010 v 2008
Melbourne	1,075,217	1,078,484	1,078,715	-3,267 (-0%)	-3,498 (-0%)
Country	217,077	224,767	236,635	-7,690 (-3%)	-19,558 (-8%)
Vic Total	1,292,294	1,303,251	1,315,350	-10,957 (-1%)	-23,056 (-2%)

Mobile Safety Camera Data

Speed Infringements Issued from Mobile Cameras (monthly totals)

Monthly Average = 50,397

2009	2010										
	Jul	Aug	Sep	Oct	Nov	Dec	Jan	Feb	Mar	Apr	May
50,428	41,211	48,564	57,619	41,750	52,024	51,439	54,548	54,283	53,468	48,585	50,841

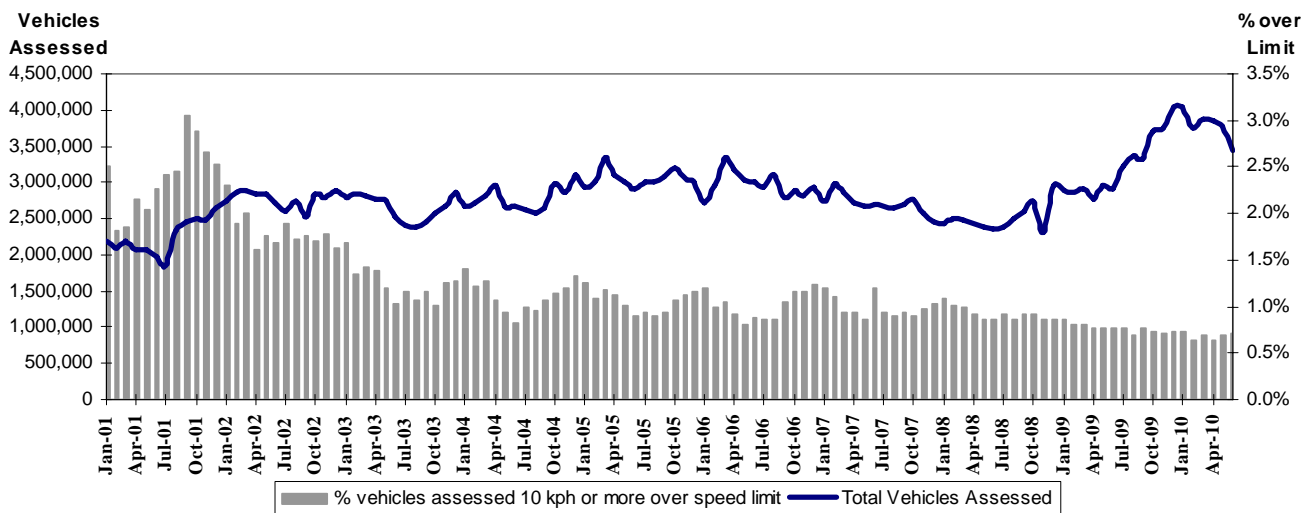
Excessive Speed Infringements Issued from Mobile Cameras (monthly totals)

Monthly Average = 367

2009	2010										
	Jul	Aug	Sep	Oct	Nov	Dec	Jan	Feb	Mar	Apr	May
327	366	346	461	282	352	382	394	360	395	372	372

Note: An ESI is defined as 25km/h over the speed limit except in a 110km/h zone where it is 20km/h over the limit.

Mobile Safety Cameras – Vehicles assessed and percentage of vehicles assessed 10km/h or more over speed limit per month



Explanations and References

Hi-Alcime is those times of the day and week (*shaded* in the table below) when casualty crashes are **ten times more likely to involve alcohol** than casualty crashes at other (**Lo-Alcime**) times.

	12am - 6am	6am - 8am	8am - 10am	10am - 2pm	2pm - 4pm	4pm - 6pm	6pm - 12pm
Monday							
Tuesday							
Wednesday							
Thursday							
Friday							
Saturday							
Sunday							

Police Service Areas align with Local Government Areas. Most Police Service Areas are equivalent to a single Local Government Area, while the remainder comprise two or three Local Government Areas.

Police Service Area	Local Government Area(s)	Police Service Area	Local Government Area(s)
BALLARAT	BALLARAT	MARIBYRNONG	MARIBYRNONG
BANYULE	BANYULE	MAROONDAH	MAROONDAH
BASS COAST	BASS COAST, SOUTH GIPPSLAND	MELBOURNE	MELBOURNE
BAW BAW	BAWBAW	MELTON	MELTON
BAYSIDE	BAYSIDE	MILDURA	MILDURA
BENALLA	BENALLA, MANSFIELD, STRATHBOGIE	MITCHELL	MITCHELL, MURRINDINDI
BENDIGO	GREATER BENDIGO, LODDON	MONASH	MONASH
BOROONDARA	BOROONDARA	MOONEE VALLEY	MOONEE VALLEY
BRIMBANK	BRIMBANK	MOORABOOL	GOLDEN PLAINS, HEPBURN, MOORABOOL
CAMPASPE	CAMPASPE	MORELAND	MORELAND
CARDINIA	CARDINIA	MORNINGTON PENINSULA	MORNINGTON PENINSULA
CASEY	CASEY	NILLUMBIK	NILLUMBIK
CENTRAL GOLDFIELDS	CENTRAL GOLDFIELDS, PYRENEES	NORTHERN GRAMPIANS	ARARAT, NORTHERN GRAMPIANS, YARRIAMIACK
CORANGAMITE	COLAC-OTWAY, CORANGAMITE	PORT PHILLIP	PORT PHILLIP
DANDENONG	GREATER DANDENONG	SHEPPARTON	GREATER SHEPPARTON
DAREBIN	DAREBIN	SOUTHERN GRAMPIANS	GLENELG, SOUTHERN GRAMPIANS
EAST GIPPSLAND	EAST GIPPSLAND	STONNINGTON	STONNINGTON
FRANKSTON	FRANKSTON	SURFCOAST	SURFCOAST
GEELONG	GREATER GEELONG, QUEENSLIFF	SWANHILL	BULOKE
GLENEIRA	GLENEIRA	WANGARATTA	ALPINE, WANGARATTA
HOBSONS BAY	HOBSONSBAY	WARRNAMBOOL	MOYNE, WARRNAMBOOL
HORSHAM	HINDMARSH, HORSHAM, WESTWIMMERA	WELLINGTON	WELLINGTON
HUME	HUME	WHITEHORSE	WHITEHORSE
KINGSTON	KINGSTON	WHITTLESEA	WHITTLESEA
KNOX	KNOX	WODONGA	INDIGO, TOWONG, WODONGA
LATROBE	LATROBE	WYNDHAM	WYNDHAM
MACEDON RANGES	MOUNT ALEXANDER, MACEDON RANGES	YARRA	YARRA
MANNINGHAM	MANNINGHAM	YARRA RANGES	YARRA RANGES

Useful Internet Sites

TAC Sites

- TAC Safety (Road Safety) www.tacsafety.com.au
- TAC How safe is your car www.howsafeisyourcar.com.au
- TAC Learners Log www.learnerslog.com.au
- TAC Motorcycle Safety Website www.spokes.com.au
- TAC Corporate site www.tac.vic.gov.au

Victorian Sites:

- arrive alive www.vicroads.vic.gov.au
- VicRoads www.vicroads.vic.gov.au
- Victorian Police www.police.vic.gov.au
- Parliamentary Road Safety Committee www.parliament.vic.gov.au/rsc/
- ARRB Transport Research www.arrb.com.au
- RACV www.racv.com.au
- Monash University Accident Research Centre www.monash.edu.au/muarc
- Roadsafe www.roadsafe.org.au

National and Interstate Sites:

- Australian Transport Safety Bureau www.atsb.gov.au
- Roads and Traffic Authority (NSW) www.rta.nsw.gov.au
- Queensland Transport - Road Safety transport.qld.gov.au/Home/Safety/Road
- Department of Transport (SA) www.transport.sa.gov.au/index.htm
- Main Roads Western Australia - Road Safety www.mrwa.wa.gov.au

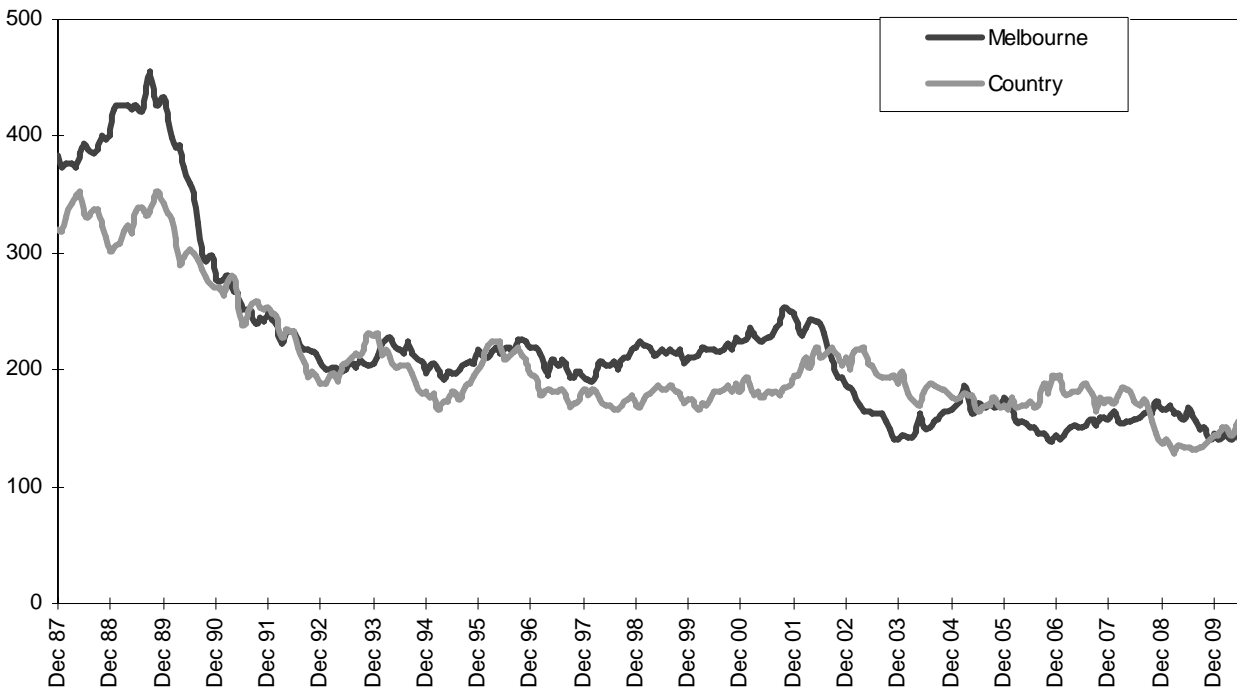
International Sites:

- National Highway Traffic Safety Admin (USA) www.nhtsa.dot.gov
- Swedish Road and Transport Institute (VTI) www.vti.se
- SWOV Institute for Road Safety Research www.swov.nl

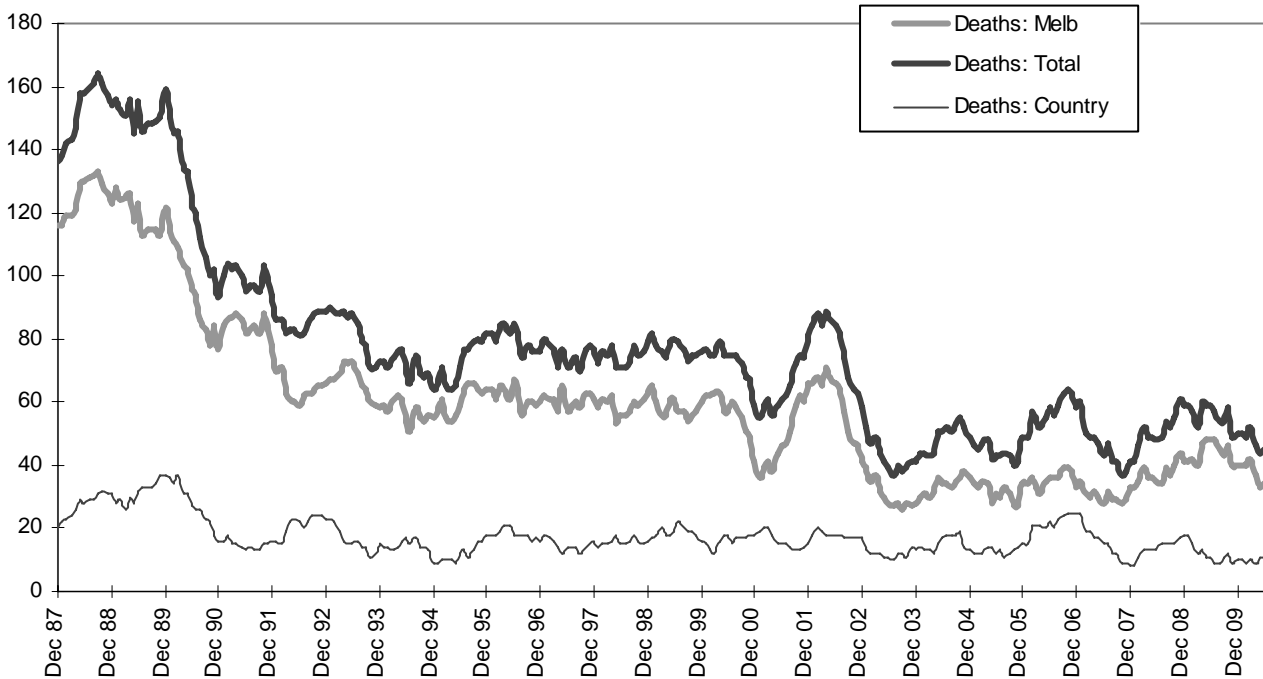
Related Sites:

- Australian Drug Foundation www.adf.org.au
- Bicycle Victoria www.bv.com.au

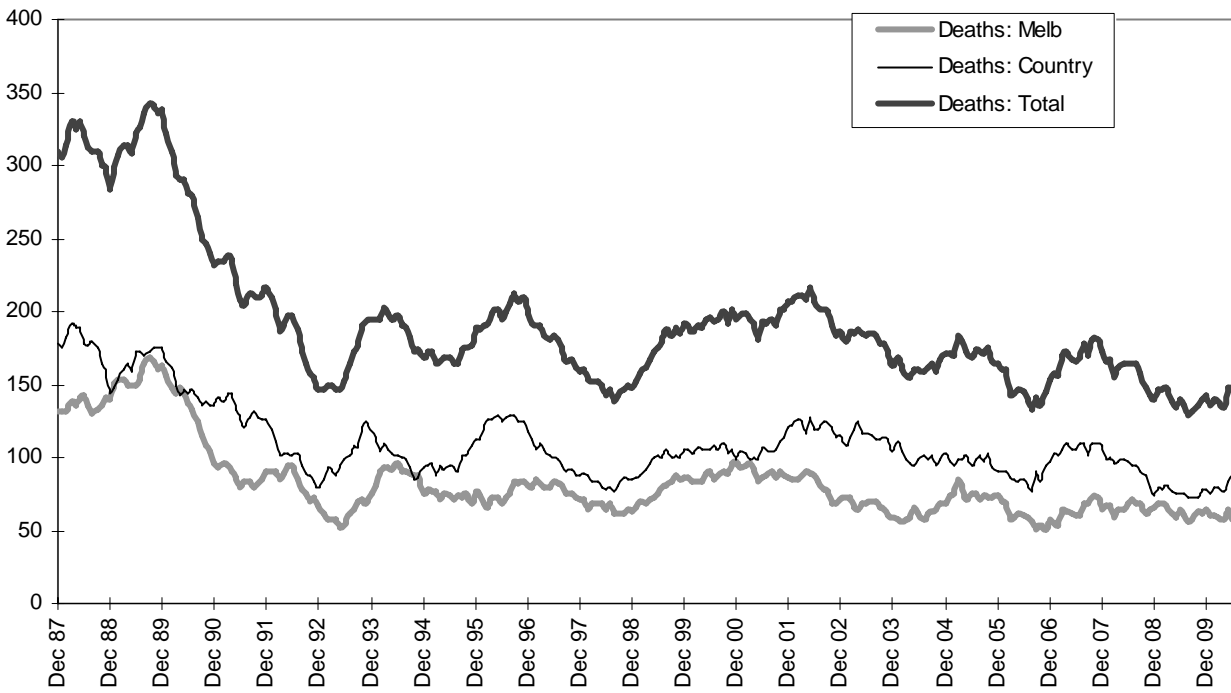
Graph 1 – Melbourne/country fatalities



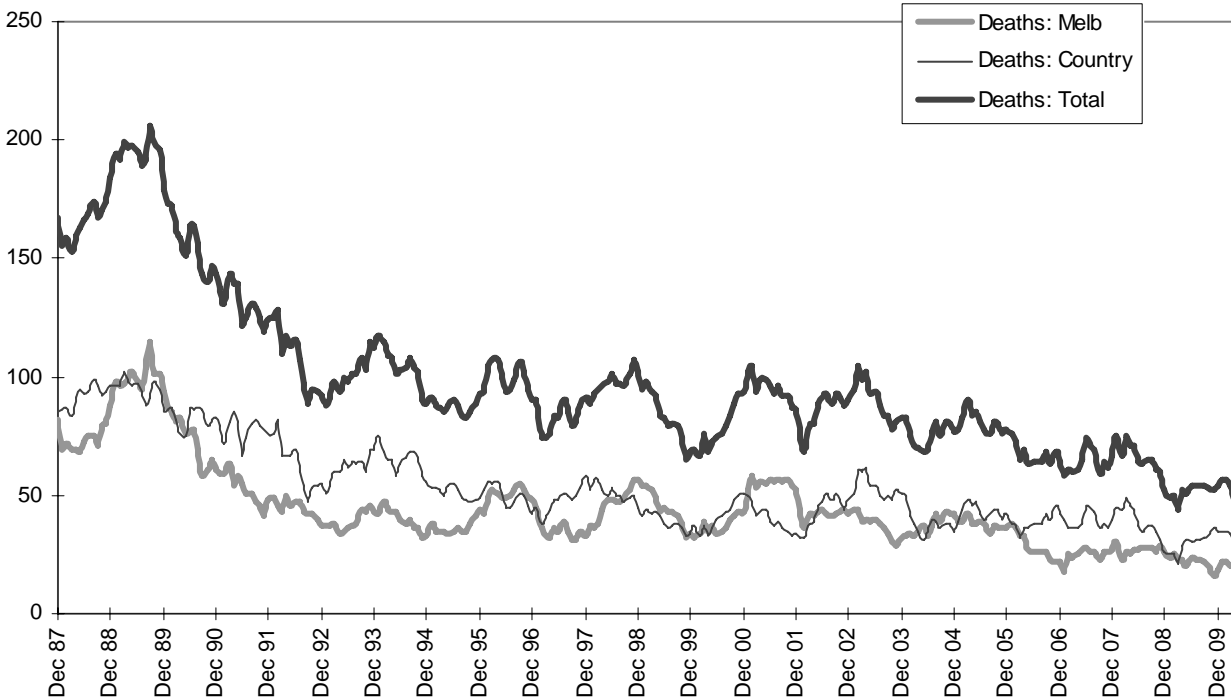
Graph 2a – Pedestrian fatalities (Melbourne/country)



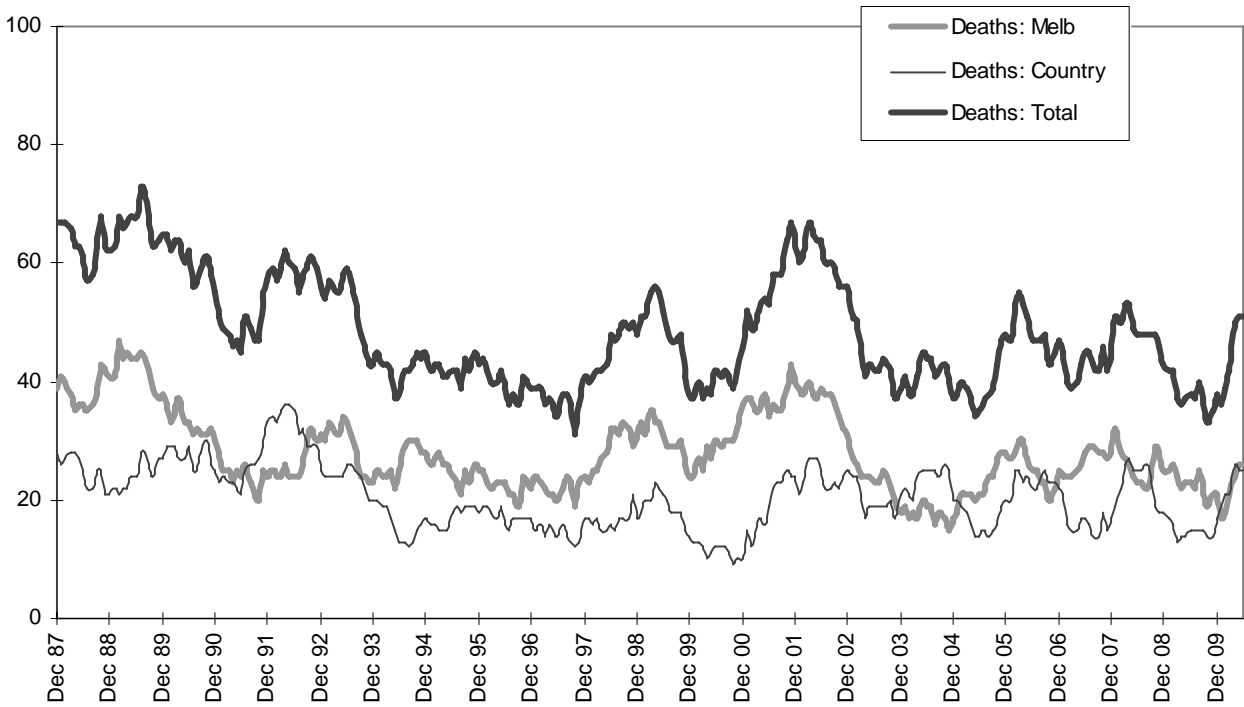
Graph 2b – Driver fatalities (Melbourne/country)



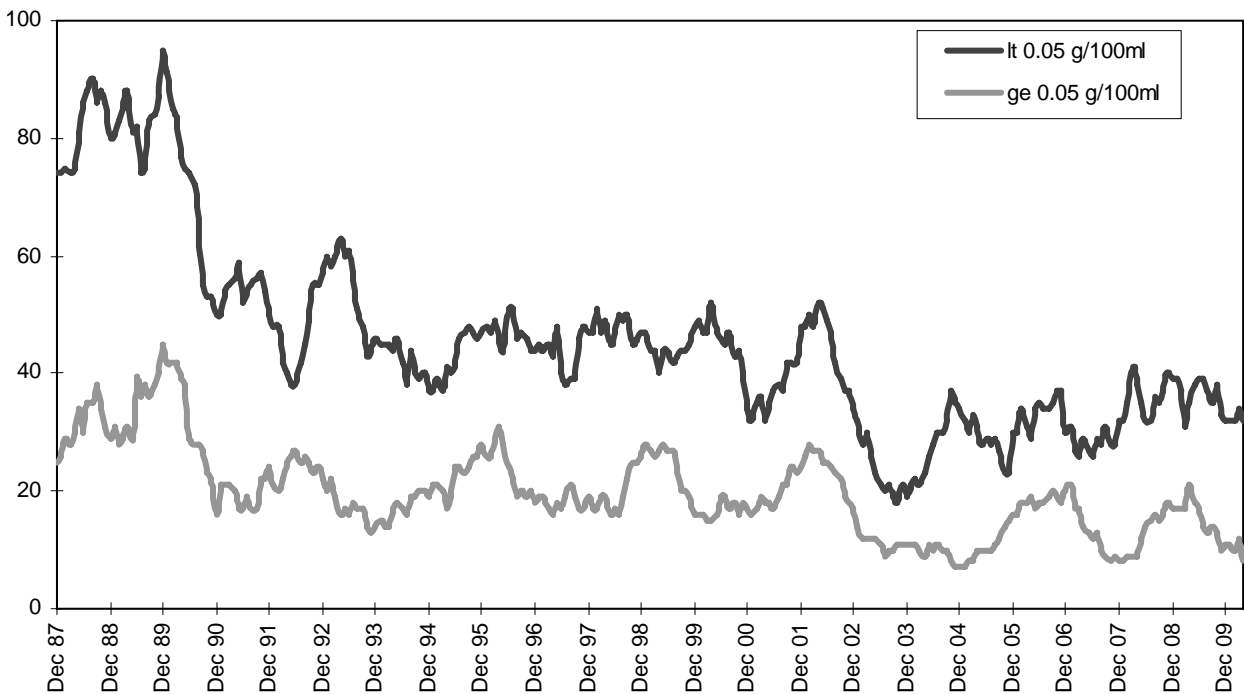
Graph 2c – Passenger fatalities (Melbourne/country)



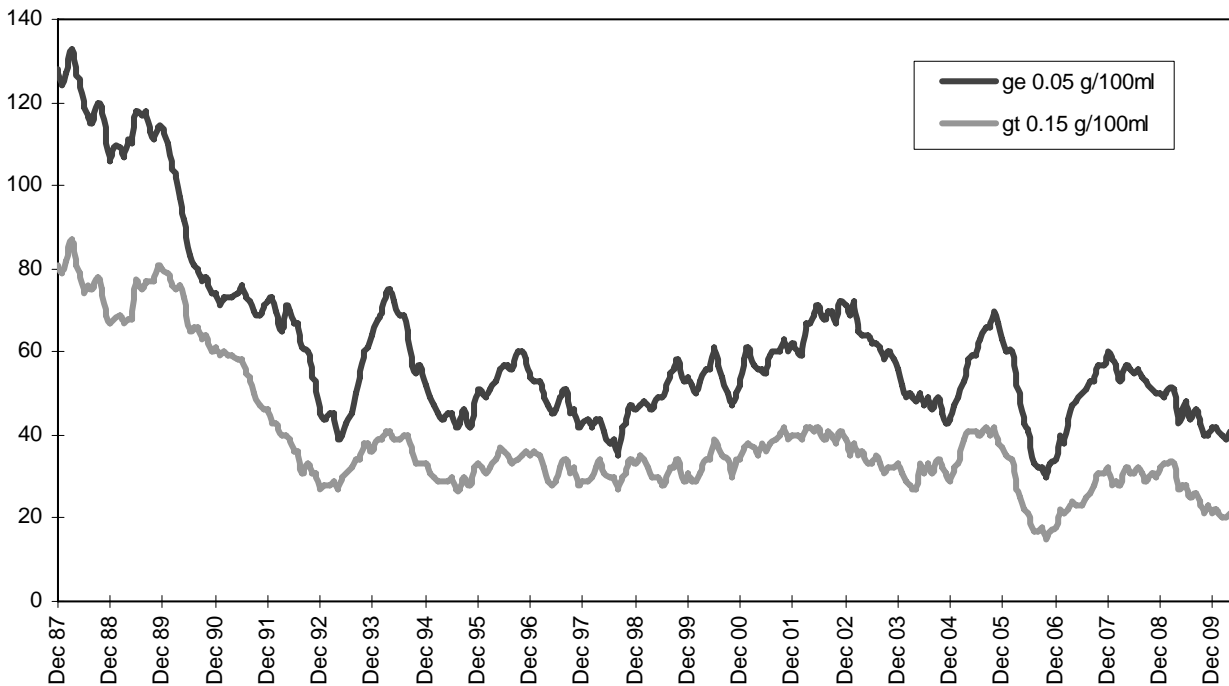
Graph 2d –Motorcyclist fatalities (Melbourne/country)



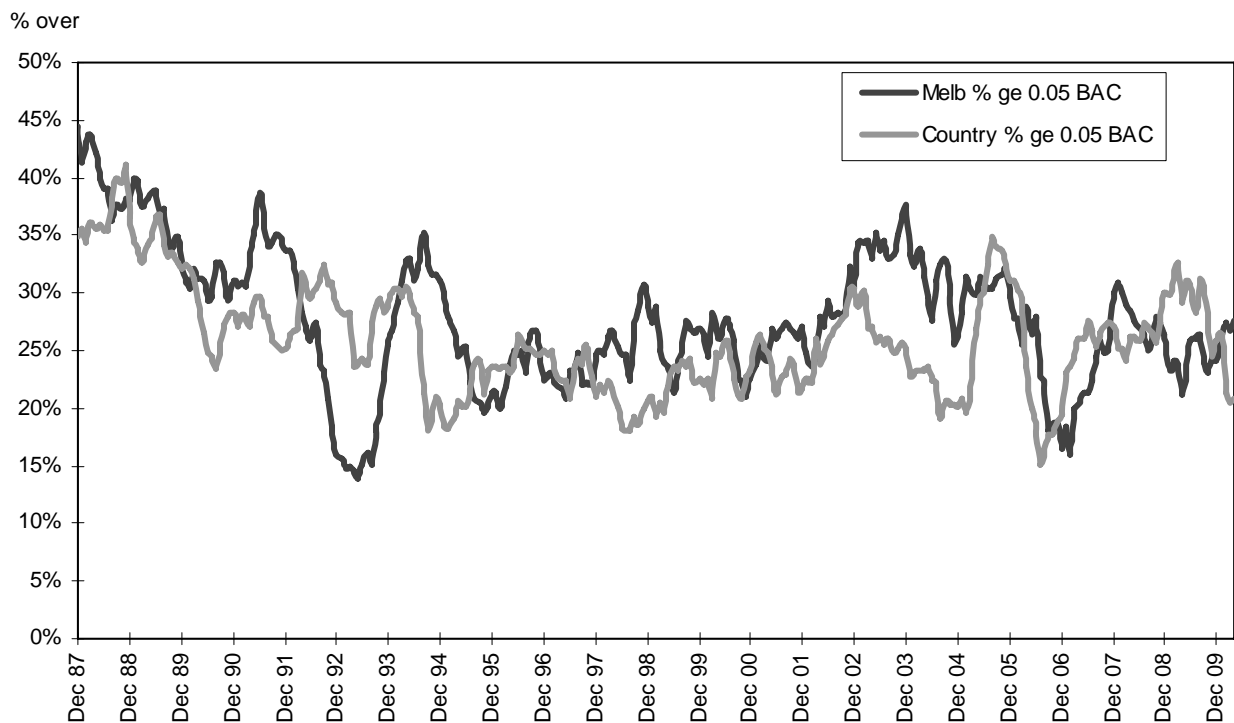
Graph 3a – Pedestrian deaths by BAC



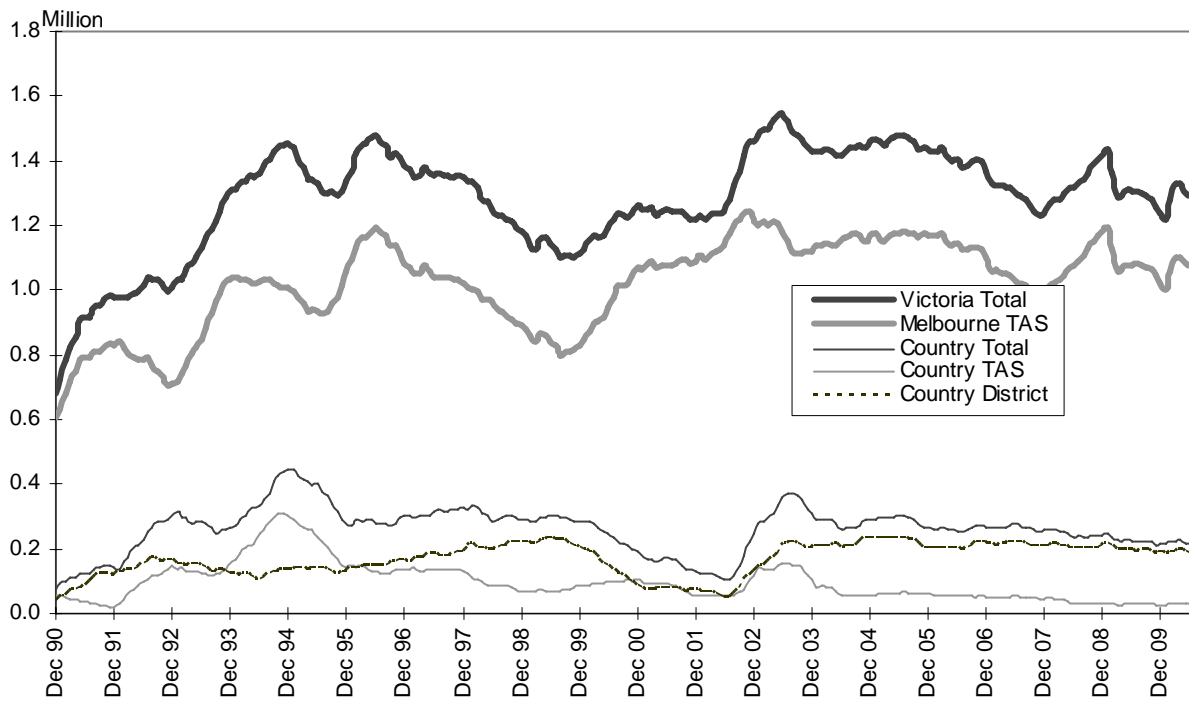
Graph 3b – Driver/rider deaths by BAC



Graph 3c – Proportion of driver/rider deaths with a BAC ge 0.05



Graph 4a – Booze-Bus RBTs



Graph 4b – RBT: Percentage positive readings

