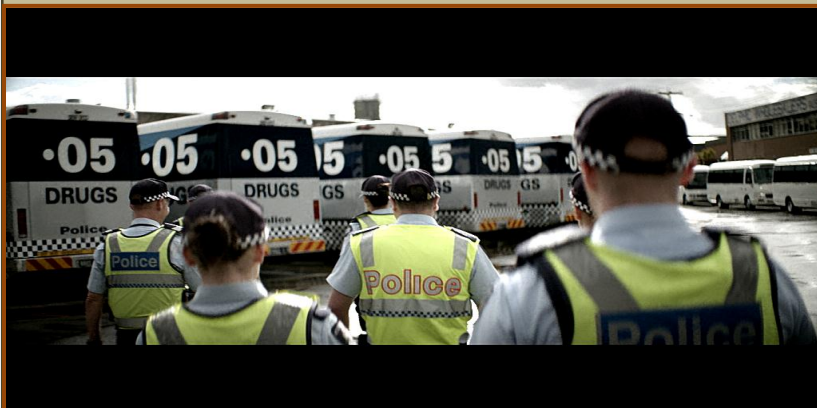


ROAD SAFETY STATISTICAL SUMMARY

March 2015



**TRANSPORT
ACCIDENT
COMMISSION**

60 Brougham Street
Geelong Vic 3220
PO Box 742
Geelong Vic 3220
Ausdoc DX 216079 Geelong

Telephone 1300 654 329
STD Toll Free 1800 332 556
Fax: 03 9656 9300
www.tac.vic.gov.au
ABN 22 033 947 623

Contents

Status Report.....	4
Fatalities.....	4
Claims involving an acute hospital admission*	5
Fatalities: 12 months to March 2015	6
Claims involving acute hospitalisation over 14 days: 12 months to September 2014 (claim acceptance date)	8
Claims involving an acute hospital admission: 12 months to September 2014 (claim acceptance date)	10
Fatalities: Victorian monthly totals since 1951	12
Fatalities by Week (2009 to 2015).....	13
The National Picture.....	14
Booze-Bus Random Breath Testing	15
Mobile Safety Camera Data	15
Explanations and References	16
Useful Internet Sites	17
Figures	18

Note about the data in this report

- All data provided in this report is the data most recently available at time of production. Fatalities, breath-test data and safety camera data are updated to the end of report month. A 6-month lag applies to TAC claims data.
- Reported data will have one extra day of exposure for leap years.
- Data is subject to revision as additional information about known accidents/claims is received, and as new accident/claim reports are received and processed.

*An acute hospital admission refers to a hospital admission that occurred within 7 days of accident.

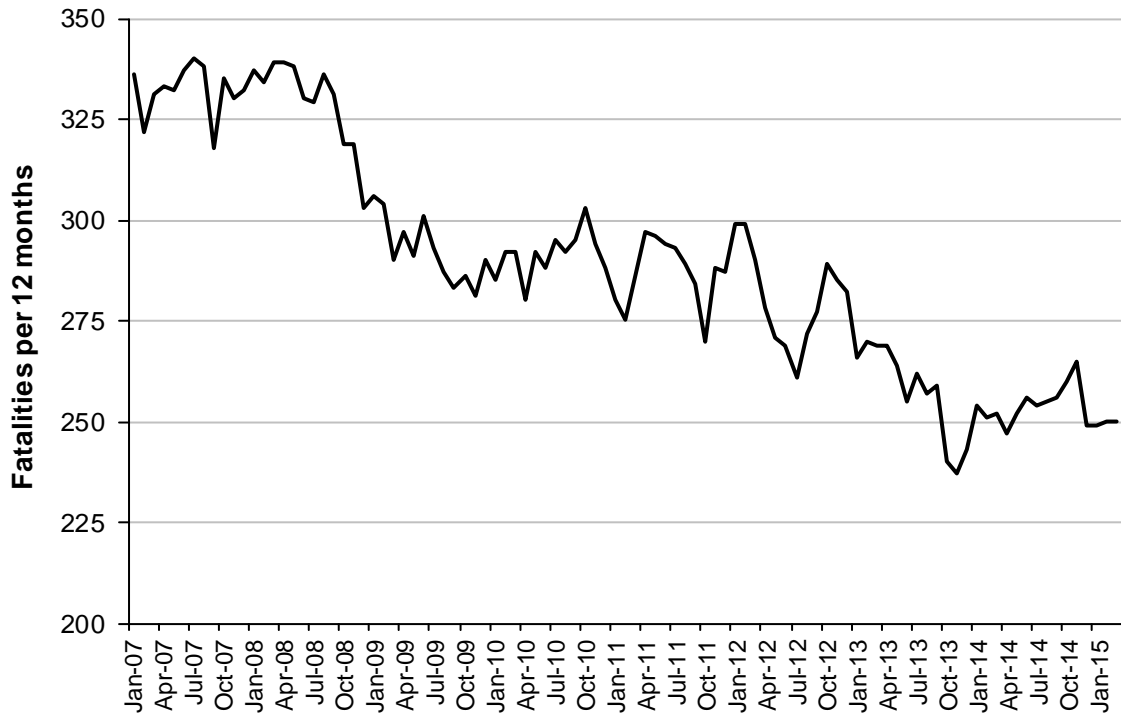
Status Report

Fatalities

- The rolling 12 month number of road fatalities in March 2015 stands at 250, 1% less than in 2014 (252).
- 25 people were fatally injured in March 2015 on Victorian roads. This compares to 25 in March 2014.

Fatalities (rolling 12 month, to end March 2015)

Category	2015	2014	2013	2015 v 2014		2014 v 2015		5 Year Av
Fatal Injuries (Rolling 12 Month Total)								
Fatal (to March)	250	252	269	-2	(-1%)	-19	(-7%)	269
per 10,000 veh	0.55	0.57	0.62	-0.02	(-4%)	-0.07	(-11%)	0.62
per 100,000 pop	4.26	4.37	4.76	-0.11	(-3%)	-0.50	(-11%)	4.75
Accidents (Rolling 12 Month Total)								
Fatal (to March)	231	224	249	7	(+3%)	-18	(-7%)	246
per 10,000 veh	0.51	0.50	0.57	+0.01	(+2%)	-0.06	(-11%)	0.56
per 100,000 pop	3.94	3.89	4.41	0.05	(+1%)	-0.47	(-11%)	4.34

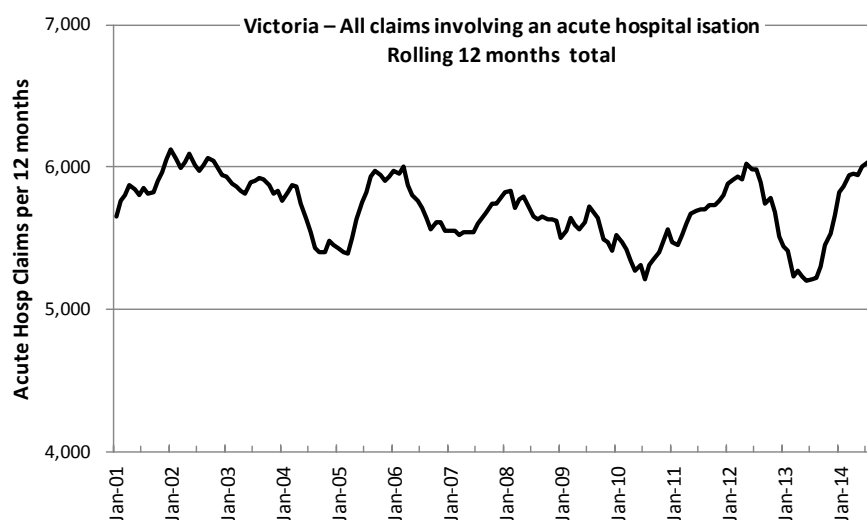
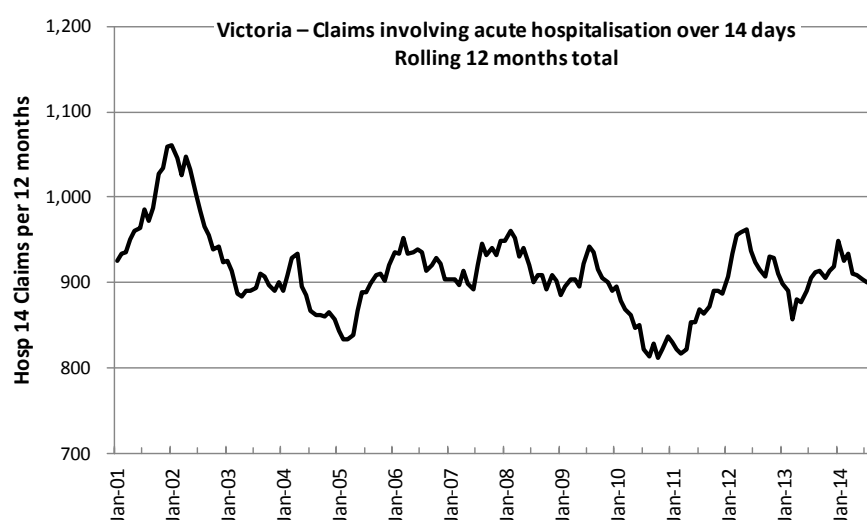


Victoria – Fatalities, rolling 12 months total

Claims involving an acute hospital admission*

(by claim acceptance date – rolling 12 month, to midnight 30 September 2014)

Category	2015	2014	2013	2015 v 2014		2014 v 2015		5 Year Av
Claims involving an acute hospitalisation over 14 days (Rolling 12 Month Total)								
Claims (to September)	893	914	907	-21	(-2%)	-14	(-2%)	883
per 100,000 pop	15.4	16.0	16.2	-0.6	(-4%)	-0.8	(-5%)	15.6
per 10,000 veh	2.0	2.1	2.1	-0.1	(-5%)	-0.1	(-5%)	2.0
All claims involving an acute hospitalisation (Rolling 12 Month Total)								
Claims (to September)	6,053	5,300	5,741	+753	(+14%)	+312	(+5%)	5,636
per 100,000 pop	104.1	92.8	102.8	+11.3	(+12%)	+1.3	(+1%)	99.5
per 10,000 veh	13.5	12.0	13.3	+1.5	(+13%)	+0.2	(+2%)	12.9



*An acute hospital admission refers to a hospital admission that occurred within 7 days of accident.

Fatalities: 12 months to March 2015

Category	2015	2014	2013	2015 v 2014		2015 v 2013		5 Year Av
Overview								
Fatalities	250	252	269	-2	(-1%)	-19	(-7%)	269
Accidents	231	224	249	+7	(+3%)	-18	(-7%)	246
Sex								
Female	61	85	85	-24	(-28%)	-24	(-28%)	76
Male	189	167	184	+22	(+13%)	+5	(+3%)	193
Roaduser								
Bicyclist	8	8	5		(0%)	+3	(+60%)	7
Driver	121	118	143	+3	(+3%)	-22	(-15%)	127
Motorcyclist	31	36	42	-5	(-14%)	-11	(-26%)	41
Passenger	42	52	48	-10	(-19%)	-6	(-13%)	53
Pedestrian	48	38	31	+10	(+26%)	+17	(+55%)	41
Location								
Melbourne	110	113	112	-3	(-3%)	-2	(-2%)	118
Rural Victoria	140	139	157	+1	(+1%)	-17	(-11%)	151
Agegroup								
0-4	4	1	3	+3	NA	+1	(+33%)	4
5-15	7	8	9	-1	(-13%)	-2	(-22%)	8
16-17	6	3	2	+3	(+100%)	+4	(+200%)	5
18-20	11	18	24	-7	(-39%)	-13	(-54%)	24
21-25	33	20	33	+13	(+65%)	0	(0%)	32
26-29	23	16	16	+7	(+44%)	+7	(+44%)	20
30-39	35	33	40	+2	(+6%)	-5	(-13%)	35
40-49	29	34	27	-5	(-15%)	+2	(+7%)	32
50-59	27	30	37	-3	(-10%)	-10	(-27%)	32
60-69	33	28	30	+5	(+18%)	+3	(+10%)	29
70+	41	60	47	-19	(-32%)	-6	(-13%)	47
Altime								
High (Melb)	57	59	56	-2	(-3%)	+1	(+2%)	62
High (Rural)	59	49	73	+10	(+20%)	-14	(-19%)	70
High (Vic)	116	108	129	+8	(+7%)	-13	(-10%)	132
Low (Melb)	53	54	56	-1	(-2%)	-3	(-5%)	56
Low (Rural)	81	90	84	-9	(-10%)	-3	(-4%)	81
Low (Vic)	134	144	140	-10	(-7%)	-6	(-4%)	137
Accident Type								
Intersection								
Adjacent direction	25	42	28	-17	(-40%)	-3	(-11%)	31
Opposing direction	10	3	4	+7	(+233%)	+6	(+150%)	6
Mid-block/other								
Head on	31	47	41	-16	(-34%)	-10	(-24%)	39
Same direction	13	12	16	+1	(+8%)	-3	(-19%)	14
Manoeuvre/o'taking	13	10	15	+3	(+30%)	-2	(-13%)	14
On path	10	1	7	+9	(+900%)	+3	(+43%)	6
Single vehicle	96	91	120	+5	(+5%)	-24	(-20%)	111
Other (incl peds)	52	46	38	+6	(+13%)	+14	(+37%)	47

Fatalities: 12 months to March 2015 – Continued

Category	2015	2014	2013	2015 v 2014		2015 v 2013		5 Year Av
Police Service Area (based on Local Government Area (see p.13))								
BALLARAT	4	7	4	-3	(-43%)	0	(0%)	6
BANYULE	2	3	1	-1	(-33%)	+1	(+100%)	2
BASS COAST	6	9	4	-3	(-33%)	+2	(+50%)	7
BAW BAW	4	5	7	-1	(-20%)	-3	(-43%)	7
BENALLA	9	12	10	-3	(-25%)	-1	(-10%)	9
BENDIGO	7	1	14	+6	(+600%)	-7	(-50%)	7
BOROONDARA	2	6	2	-4	(-67%)	0	(0%)	3
BRIMBANK	5	5	8	0	(0%)	-3	(-38%)	6
CAMPASPE	4	5	9	-1	(-20%)	-5	(-56%)	5
CARDINIA	3	6	3	-3	(-50%)	0	(0%)	6
CASEY	5	5	6	0	(0%)	-1	(-17%)	7
CENTRAL GOLDFIELDS	0	5	2	-5	(-100%)	-2	(-100%)	3
DAREBIN	0	3	4	-3	(-100%)	-4	(-100%)	3
EAST GIPPSLAND	7	2	5	+5	(+250%)	+2	(+40%)	6
FRANKSTON	5	1	2	+4	(+400%)	+3	(+150%)	3
GEELONG	6	4	16	+2	(+50%)	-10	(-63%)	10
GLEN EIRA	6	5	6	+1	(+20%)	0	(0%)	5
GREATER DANDENONG	5	2	6	+3	(+150%)	-1	(-17%)	4
HOBSONS BAY	0	3	0	-3	(-100%)	0	(0%)	1
HORSHAM	2	4	3	-2	(-50%)	-1	(-33%)	4
HUME	5	4	12	+1	(+25%)	-7	(-58%)	6
KINGSTON	4	7	7	-3	(-43%)	-3	(-43%)	5
KNOX	4	5	1	-1	(-20%)	+3	(+300%)	3
LA TROBE	5	3	8	+2	(+67%)	-3	(-38%)	5
MACEDON RANGES	8	8	4	0	(0%)	+4	(+100%)	6
MANNINGHAM	2	0	3	+2	(+100%)	-1	(-33%)	2
MARIBYRNONG	0	3	4	-3	(-100%)	-4	(-100%)	2
MAROONDAH	2	0	4	+2	(+100%)	-2	(-50%)	2
MELBOURNE	8	3	2	+5	(+167%)	+6	(+300%)	5
MELTON	6	9	3	-3	(-33%)	+3	(+100%)	7
MILDURA	2	6	2	-4	(-67%)	0	(0%)	3
MITCHELL	7	6	12	+1	(+17%)	-5	(-42%)	8
MONASH	1	4	5	-3	(-75%)	-4	(-80%)	3
MOONEE VALLEY	4	4	1	0	(0%)	+3	(+300%)	2
MOORABOOL	5	8	9	-3	(-38%)	-4	(-44%)	8
MORELAND	8	2	2	+6	(+300%)	+6	(+300%)	4
MORNINGTON PENINSULA	8	5	5	+3	(+60%)	+3	(+60%)	7
NILLUMBIK	2	0	2	+2	(+100%)	0	(0%)	2
NORTHERN GRAMPIANS	3	8	5	-5	(-63%)	-2	(-40%)	5
PORT PHILLIP	1	4	0	-3	(-75%)	+1	(+25%)	2
SHEPPARTON	4	3	11	+1	(+33%)	-7	(-64%)	6
SOUTHERN GRAMPIANS	10	0	5	+10	(+200%)	+5	(+100%)	5
STONNINGTON	4	4	1	0	(0%)	+3	(+300%)	2
SURF COAST	7	5	3	+2	(+40%)	+4	(+133%)	7
SWAN HILL	4	9	5	-5	(-56%)	-1	(-20%)	6
WANGARATTA	9	8	8	+1	(+13%)	+1	(+13%)	10
WARRNAMBOOL	14	10	4	+4	(+40%)	+10	(+250%)	8
WELLINGTON	4	6	3	-2	(-33%)	+1	(+33%)	5
WHITEHORSE	5	2	2	+3	(+150%)	+3	(+150%)	4
WHITTLESEA	4	4	5	0	(0%)	-1	(-20%)	5
WODONGA	9	5	3	+4	(+80%)	+6	(+200%)	5
WYNDHAM	5	2	11	+3	(+150%)	-6	(-55%)	6
YARRA	1	0	2	+1	(+50%)	-1	(-50%)	2
YARRA RANGES	3	12	3	-9	(-75%)	0	(0%)	7

Claims involving acute hospitalisation over 14 days: 12 months to September 2014 (claim acceptance date)

Category	2014	2013	2012	2014 v 2013	2014 v 2012	5 Year Av
Overview						
Claims	893	914	907	-21 (-2%)	-14 (-2%)	883
Sex						
Female	358	389	391	-31 (-8%)	-33 (-8%)	358
Male	535	524	516	+11 (+2%)	+19 (+4%)	525
Roaduser						
Driver	373	380	355	-7 (-2%)	+18 (+5%)	349
Passenger	131	151	147	-20 (-13%)	-16 (-11%)	140
Motorcyclist	157	134	164	+23 (+17%)	-7 (-4%)	161
Pedestrian	176	200	183	-24 (-12%)	-7 (-4%)	178
Cyclist	34	28	39	+6 (+21%)	-5 (-13%)	36
Train/Tram	9	4	9	+5 (+125%)	0 (0%)	7
Location*						
Melbourne	335	598	600	-263 (-44%)	-265 (-44%)	520
Rural Victoria	188	310	302	-122 (-39%)	-114 (-38%)	283
Agegroup						
0-4	1	2	1	-1 (-50%)	0 (0%)	3
5-15	15	7	13	+8 (+114%)	+2 (+15%)	14
16-17	11	16	24	-5 (-31%)	-13 (-54%)	18
18-20	54	70	52	-16 (-23%)	+2 (+4%)	58
21-25	85	77	83	+8 (+10%)	+2 (+2%)	81
26-29	47	39	56	+8 (+21%)	-9 (-16%)	50
30-39	111	114	112	-3 (-3%)	-1 (-1%)	111
40-49	112	115	124	-3 (-3%)	-12 (-10%)	116
50-59	112	99	97	+13 (+13%)	+15 (+15%)	101
60-69	97	112	116	-15 (-13%)	-19 (-16%)	102
70+	248	263	229	-15 (-6%)	+19 (+8%)	229
Alctime*						
High (Melb)	139	272	267	-133 (-49%)	-128 (-48%)	224
High (Rural)	74	113	119	-39 (-35%)	-45 (-38%)	113
High (Vic)	213	385	386	-172 (-45%)	-173 (-45%)	337
Low (Melb)	196	326	333	-130 (-40%)	-137 (-41%)	296
Low (Rural)	114	197	183	-83 (-42%)	-69 (-38%)	170
Low (Vic)	310	523	516	-213 (-41%)	-206 (-40%)	465
Accident Type						
Intersection						
Adjacent direction	96	136	113	-40 (-29%)	-17 (-15%)	115
Opposing direction	60	65	62	-5 (-8%)	-2 (-3%)	60
Mid-block/other						
Head on	96	74	74	+22 (+30%)	+22 (+30%)	81
Same direction	65	81	88	-16 (-20%)	-23 (-26%)	85
Manoeuvre/o'taking	60	59	57	+1 (+2%)	+3 (+5%)	55
On path	27	20	19	+7 (+35%)	+8 (+42%)	25
Single vehicle	272	231	260	+41 (+18%)	+12 (+5%)	245
Other (incl peds)	217	248	234	-31 (-13%)	-17 (-7%)	218

Note: Excludes rejected claims and claims for interstate crashes.

* Due to changes in claim process procedures, locality data are missing for a significant number of claims lodged after October 2013.

Claims involving acute hospitalisation over 14 days: 12 months to September 2014 (claim acceptance date) – Continued

Category	2014	2013	2012	2014 v 2013		2014 v 2012		5 Year Av
Police Service Area* (based on Local Government Area (see p.13))								
BALLARAT	6	17	9	-11	(-65%)	-3	(-33%)	13
BANYULE	3	10	8	-7	(-70%)	-5	(-63%)	9
BASS COAST	15	13	14	+2	(+15%)	+1	(+7%)	16
BAW BAW	3	8	15	-5	(-63%)	-12	(-80%)	9
BENALLA	11	18	16	-7	(-39%)	-5	(-31%)	19
BENDIGO	8	18	13	-10	(-56%)	-5	(-38%)	16
BOROONDARA	14	20	28	-6	(-30%)	-14	(-50%)	21
BRIMBANK	11	20	33	-9	(-45%)	-22	(-67%)	19
CAMPASPE	5	5	6	0	(0%)	-1	(-17%)	5
CARDINIA	7	15	13	-8	(-53%)	-6	(-46%)	14
CASEY	12	34	18	-22	(-65%)	-6	(-33%)	25
CENTRAL GOLDFIELDS	2	7	6	-5	(-71%)	-4	(-67%)	5
DAREBIN	8	18	19	-10	(-56%)	-11	(-58%)	16
EAST GIPPSLAND	7	5	18	+2	(+40%)	-11	(-61%)	11
FRANKSTON	5	15	12	-10	(-67%)	-7	(-58%)	14
GEELONG	17	37	29	-20	(-54%)	-12	(-41%)	26
GLEN EIRA	15	33	27	-18	(-55%)	-12	(-44%)	28
GREATER DANDENONG	19	31	29	-12	(-39%)	-10	(-34%)	26
HOBSONS BAY	5	10	13	-5	(-50%)	-8	(-62%)	9
HORSHAM	2	5	11	-3	(-60%)	-9	(-82%)	7
HUME	8	34	26	-26	(-76%)	-18	(-69%)	23
KINGSTON	14	25	17	-11	(-44%)	-3	(-18%)	18
KNOX	12	18	20	-6	(-33%)	-8	(-40%)	15
LA TROBE	6	15	12	-9	(-60%)	-6	(-50%)	13
MACEDON RANGES	15	17	13	-2	(-12%)	+2	(+15%)	16
MANNINGHAM	8	13	22	-5	(-38%)	-14	(-64%)	13
MARIBYRNONG	3	13	16	-10	(-77%)	-13	(-81%)	12
MAROONDAH	4	7	7	-3	(-43%)	-3	(-43%)	8
MELBOURNE	18	32	29	-14	(-44%)	-11	(-38%)	28
MELTON	8	17	13	-9	(-53%)	-5	(-38%)	12
MILDURA	4	6	11	-2	(-33%)	-7	(-64%)	6
MITCHELL	15	18	22	-3	(-17%)	-7	(-32%)	17
MONASH	18	20	21	-2	(-10%)	-3	(-14%)	21
MOONEE VALLEY	16	14	21	+2	(+14%)	-5	(-24%)	15
MOORABOOL	12	18	9	-6	(-33%)	+3	(+33%)	13
MORELAND	17	38	23	-21	(-55%)	-6	(-26%)	23
MORNINGTON PENINSULA	14	29	39	-15	(-52%)	-25	(-64%)	27
NILLUMBIK	4	8	6	-4	(-50%)	-2	(-33%)	5
NORTHERN GRAMPPIANS	8	13	4	-5	(-38%)	+4	(+100%)	7
PORT PHILLIP	13	10	15	+3	(+30%)	-2	(-13%)	11
SHEPPARTON	6	15	11	-9	(-60%)	-5	(-45%)	11
SOUTHERN GRAMPPIANS	7	7	9	0	(0%)	-2	(-22%)	9
STONNINGTON	12	12	16	0	(0%)	-4	(-25%)	15
SURF COAST	5	11	8	-6	(-55%)	-3	(-38%)	10
SWAN HILL	4	6	12	-2	(-33%)	-8	(-67%)	6
WANGARATTA	6	20	15	-14	(-70%)	-9	(-60%)	15
WARRNAMBOOL	6	13	16	-7	(-54%)	-10	(-63%)	12
WELLINGTON	8	8	8	0	(0%)	0	(0%)	9
WHITEHORSE	10	14	22	-4	(-29%)	-12	(-55%)	18
WHITTLESEA	10	23	30	-13	(-57%)	-20	(-67%)	19
WODONGA	10	10	15	0	(0%)	-5	(-33%)	10
WYNDHAM	17	20	21	-3	(-15%)	-4	(-19%)	17
YARRA	10	14	9	-4	(-29%)	+1	(+11%)	12
YARRA RANGES	20	31	27	-11	(-35%)	-7	(-26%)	28

Note: excludes rejected claims and claims for interstate crashes

* Due to changes in claim process procedures, locality data are missing for a significant number of claims lodged after October 2013.

Claims involving an acute hospital admission: 12 months to September 2014 (claim acceptance date)

Category	2014	2013	2012	2014 v 2013	2014 v 2012	5 Year Av
Overview						
Claims	6,053	5,300	5,741	+753 (+14%)	+312 (+5%)	5,636
Sex						
Female	2,547	2,160	2,492	+387 (+18%)	+55 (+2%)	2,380
Male	3,499	3,138	3,249	+361 (+12%)	+250 (+8%)	3,252
Roaduser						
Driver	2,709	2,403	2,760	+306 (+13%)	-51 (-2%)	2,566
Passenger	1,054	903	983	+151 (+17%)	+71 (+7%)	1,010
Motorcyclist	1,147	873	867	+274 (+31%)	+280 (+32%)	967
Pedestrian	630	637	644	-7 (-1%)	-14 (-2%)	633
Cyclist	382	367	357	+15 (+4%)	+25 (+7%)	356
Train/Tram	35	27	26	+8 (+30%)	+9 (+35%)	26
Location*						
Melbourne	2,095	3,563	3,820	-1468 (-41%)	-1725 (-45%)	3,377
Rural Victoria	937	1,667	1,845	-730 (-44%)	-908 (-49%)	1,609
Agegroup						
0-4	50	49	47	+1 (+2%)	+3 (+6%)	48
5-15	166	178	182	-12 (-7%)	-16 (-9%)	191
16-17	97	92	128	+5 (+5%)	-31 (-24%)	114
18-20	508	477	520	+31 (+6%)	-12 (-2%)	521
21-25	790	630	742	+160 (+25%)	+48 (+6%)	705
26-29	496	386	434	+110 (+28%)	+62 (+14%)	432
30-39	899	786	885	+113 (+14%)	+14 (+2%)	871
40-49	926	794	846	+132 (+17%)	+80 (+9%)	843
50-59	766	648	715	+118 (+18%)	+51 (+7%)	701
60-69	544	483	522	+61 (+13%)	+22 (+4%)	495
70+	811	777	720	+34 (+4%)	+91 (+13%)	715
Alctime*						
High (Melb)	939	1,563	1,732	-624 (-40%)	-793 (-46%)	1,515
High (Rural)	383	664	774	-281 (-42%)	-391 (-51%)	684
High (Vic)	1,322	2,227	2,506	-905 (-41%)	-1184 (-47%)	2,198
Low (Melb)	1,156	2,000	2,088	-844 (-42%)	-932 (-45%)	1,862
Low (Rural)	554	1,003	1,071	-449 (-45%)	-517 (-48%)	925
Low (Vic)	1,710	3,003	3,159	-1293 (-43%)	-1449 (-46%)	2,788
Accident Type						
Intersection						
Adjacent direction	793	786	833	+7 (+1%)	-40 (-5%)	820
Opposing direction	516	485	491	+31 (+6%)	+25 (+5%)	477
Mid-block/other						
Head on	346	282	310	+64 (+23%)	+36 (+12%)	321
Same direction	882	756	900	+126 (+17%)	-18 (-2%)	868
Manoeuvre/o'taking	325	311	313	+14 (+5%)	+12 (+4%)	320
On path	292	222	233	+70 (+32%)	+59 (+25%)	230
Single vehicle	1,687	1,430	1,574	+257 (+18%)	+113 (+7%)	1,573
Other (incl peds)	1,212	1,028	1,087	+184 (+18%)	+125 (+11%)	1,027

Note: excludes rejected claims and claims for interstate crashes

* Due to changes in claim process procedures, locality data are missing for a significant number of claims lodged after October 2013.

Claims involving an acute hospital admission: 12 months to September 2014 (claim acceptance date) -
Continued

Category	2014	2013	2012	2014 v 2013		2014 v 2012		5 Year Av
Police Service Area* (based on Local Government Area (see p.13))								
BALLARAT	33	98	94	-65	(-66%)	-61	(-65%)	83
BANYULE	33	51	70	-18	(-35%)	-37	(-53%)	54
BASS COAST	46	77	82	-31	(-40%)	-36	(-44%)	73
BAW BAW	25	58	69	-33	(-57%)	-44	(-64%)	51
BENALLA	55	107	108	-52	(-49%)	-53	(-49%)	111
BENDIGO	51	84	123	-33	(-39%)	-72	(-59%)	88
BOROONDARA	72	146	130	-74	(-51%)	-58	(-45%)	124
BRIMBANK	59	134	182	-75	(-56%)	-123	(-68%)	124
CAMPASPE	22	31	46	-9	(-29%)	-24	(-52%)	34
CARDINIA	52	83	83	-31	(-37%)	-31	(-37%)	81
CASEY	117	213	219	-96	(-45%)	-102	(-47%)	205
CENTRAL GOLDFIELDS	15	24	25	-9	(-38%)	-10	(-40%)	23
DAREBIN	45	92	97	-47	(-51%)	-52	(-54%)	90
EAST GIPPSLAND	23	59	85	-36	(-61%)	-62	(-73%)	58
FRANKSTON	56	106	133	-50	(-47%)	-77	(-58%)	116
GEELONG	144	202	228	-58	(-29%)	-84	(-37%)	207
GLEN EIRA	113	177	178	-64	(-36%)	-65	(-37%)	162
GREATER DANDENONG	143	208	197	-65	(-31%)	-54	(-27%)	185
HOBSONS BAY	20	51	77	-31	(-61%)	-57	(-74%)	53
HORSHAM	16	31	36	-15	(-48%)	-20	(-56%)	32
HUME	71	153	130	-82	(-54%)	-59	(-45%)	130
KINGSTON	82	127	136	-45	(-35%)	-54	(-40%)	119
KNOX	56	82	117	-26	(-32%)	-61	(-52%)	99
LA TROBE	33	68	58	-35	(-51%)	-25	(-43%)	61
MACEDON RANGES	64	93	71	-29	(-31%)	-7	(-10%)	80
MANNINGHAM	29	73	77	-44	(-60%)	-48	(-62%)	62
MARIBYRNONG	35	77	76	-42	(-55%)	-41	(-54%)	69
MAROONDAH	28	48	57	-20	(-42%)	-29	(-51%)	57
MELBOURNE	133	249	242	-116	(-47%)	-109	(-45%)	211
MELTON	41	78	67	-37	(-47%)	-26	(-39%)	67
MILDURA	23	31	44	-8	(-26%)	-21	(-48%)	32
MITCHELL	53	84	96	-31	(-37%)	-43	(-45%)	78
MONASH	115	153	189	-38	(-25%)	-74	(-39%)	154
MOONEE VALLEY	59	101	123	-42	(-42%)	-64	(-52%)	92
MOORABOOL	66	114	95	-48	(-42%)	-29	(-31%)	88
MORELAND	79	143	135	-64	(-45%)	-56	(-41%)	127
MORNINGTON PENINSULA	82	120	170	-38	(-32%)	-88	(-52%)	138
NILLUMBIK	15	38	39	-23	(-61%)	-24	(-62%)	34
NORTHERN GRAMPPIANS	17	43	29	-26	(-60%)	-12	(-41%)	31
PORT PHILLIP	99	99	108	0	(0%)	-9	(-8%)	103
SHEPPARTON	28	57	76	-29	(-51%)	-48	(-63%)	55
SOUTHERN GRAMPPIANS	24	47	45	-23	(-49%)	-21	(-47%)	41
STONNINGTON	86	134	109	-48	(-36%)	-23	(-21%)	114
SURF COAST	30	51	54	-21	(-41%)	-24	(-44%)	60
SWAN HILL	25	29	39	-4	(-14%)	-14	(-36%)	32
WANGARATTA	49	98	97	-49	(-50%)	-48	(-49%)	90
WARRNAMBOOL	30	65	89	-35	(-54%)	-59	(-66%)	79
WELLINGTON	45	53	69	-8	(-15%)	-24	(-35%)	65
WHITEHORSE	61	105	120	-44	(-42%)	-59	(-49%)	107
WHITTLESEA	64	139	154	-75	(-54%)	-90	(-58%)	119
WODONGA	20	63	87	-43	(-68%)	-67	(-77%)	57
WYNDHAM	96	127	135	-31	(-24%)	-39	(-29%)	123
YARRA	62	96	102	-34	(-35%)	-40	(-39%)	97
YARRA RANGES	92	160	168	-68	(-43%)	-76	(-45%)	162

Note: excludes rejected claims and claims for interstate crashes

* Due to changes in claim process procedures, locality data are missing for a significant number of claims lodged after October 2013.

Fatalities: Victorian monthly totals since 1951

Year	Jan	Feb	Mar	Apr	May	Jun	Jul	Aug	Sep	Oct	Nov	Dec	Totals
1951							61	59	52	38	29	41	
1952	45	40	54	61	54	69	67	55	44	44	31	20	584
1953	23	28	54	58	49	42	50	37	44	27	36	32	480
1954	44	42	28	60	55	36	63	33	25	52	30	41	509
1955	44	36	45	55	48	56	64	44	44	32	40	40	548
1956	34	48	51	67	53	65	71	47	39	39	44	48	606
1957	50	41	46	58	52	54	57	53	51	46	32	49	589
1958	50	38	42	58	54	41	54	53	57	40	57	52	596
1959	50	57	61	50	75	55	42	48	52	55	63	63	671
1960	49	53	57	76	70	70	67	62	61	77	52	66	760
1961	63	57	68	74	58	68	78	82	59	62	60	65	794
1962	65	41	76	78	72	80	70	77	62	53	64	70	808
1963	67	56	65	85	66	68	77	55	55	58	61	67	780
1964	73	71	78	71	83	89	80	89	67	66	62	75	904
1965	63	64	86	88	80	87	79	69	81	77	68	87	929
1966	75	59	75	103	74	86	87	80	75	66	90	85	955
1967	61	79	91	97	81	71	59	67	70	68	60	83	887
1968	70	78	86	78	73	76	73	77	72	80	81	105	949
1969	79	68	79	87	86	77	87	83	87	83	94	101	1,011
1970	85	84	106	80	87	88	110	106	78	95	68	74	1,061
1971	83	75	77	68	76	86	85	72	78	73	74	76	923
1972	61	62	75	82	75	71	98	85	83	62	80	81	915
1973	75	75	95	85	64	66	61	85	89	88	66	86	935
1974	56	62	81	60	70	73	67	62	53	70	80	72	806
1975	67	65	87	73	97	94	57	75	69	66	71	89	910
1976	79	78	88	78	69	79	60	70	82	78	77	100	938
1977	65	71	89	79	65	79	70	91	68	74	96	107	954
1978	75	54	95	63	64	69	68	77	65	84	83	72	869
1979	63	60	86	75	45	64	66	75	69	79	72	93	847
1980	48	55	66	59	47	56	60	53	45	58	61	49	657
1981	69	60	58	61	74	65	61	63	68	71	59	57	766
1982	55	53	59	59	67	45	47	71	53	69	65	66	709
1983	42	59	53	63	62	61	65	51	59	43	54	52	664
1984	65	48	58	50	56	48	46	50	71	53	55	58	658
1985	56	47	50	65	75	50	51	50	58	61	56	64	683
1986	56	50	70	69	59	53	42	54	54	52	59	51	669
1987	62	43	57	52	63	59	62	49	62	61	55	80	705
1988	49	58	69	54	79	50	54	52	64	59	43	70	701
1989	76	65	80	59	67	73	52	65	82	50	41	66	776
1990	48	44	55	39	56	64	41	34	48	35	40	44	548
1991	45	39	70	30	34	29	44	47	41	36	35	53	503
1992	34	33	34	47	33	29	23	27	28	38	30	40	396
1993	27	40	37	39	44	33	33	27	34	39	43	40	436
1994	36	31	44	35	27	33	29	37	17	27	32	30	378
1995	38	35	26	33	34	41	27	34	34	32	38	46	418
1996	40	47	35	38	28	29	30	35	49	24	33	30	418
1997	36	25	30	30	40	22	39	26	26	29	39	35	377
1998	29	29	32	36	31	22	40	19	37	36	49	30	390
1999	32	31	35	35	34	24	35	26	28	38	29	37	384
2000	32	26	46	32	39	32	33	29	36	29	44	29	407
2001	44	30	31	32	31	41	34	37	35	51	41	37	444
2002	32	31	45	31	45	32	27	25	31	30	31	37	397
2003	21	41	36	28	31	28	20	23	23	24	24	31	330
2004	32	22	30	30	46	28	27	26	22	28	25	27	343
2005	33	27	47	21	29	23	30	25	25	33	17	36	346
2006	24	37	23	23	27	23	25	22	43	20	31	39	337
2007	23	23	32	25	26	28	28	20	23	37	26	41	332
2008	28	20	37	25	25	20	27	27	18	25	26	25	303
2009	31	18	23	32	19	30	19	21	14	28	21	34	290
2010	26	25	23	20	31	26	26	18	17	36	12	28	288
2011	18	20	34	31	30	24	25	14	12	22	30	27	287
2012	30	20	25	19	23	22	17	25	17	34	26	24	282
2013	14	24	24	19	18	13	24	20	19	15	23	30	243
2014	25	21	25	14	23	17	22	21	20	19	28	14	249
2015	27	22	25										
Ave	48	46	55	54	53	51	51	50	49	50	49	55	613
Max	85	84	106	103	97	94	110	106	89	95	96	107	1,061
Min	14	18	23	14	18	13	17	14	12	15	12	14	243

Fatalities by Week (2009 to 2015)

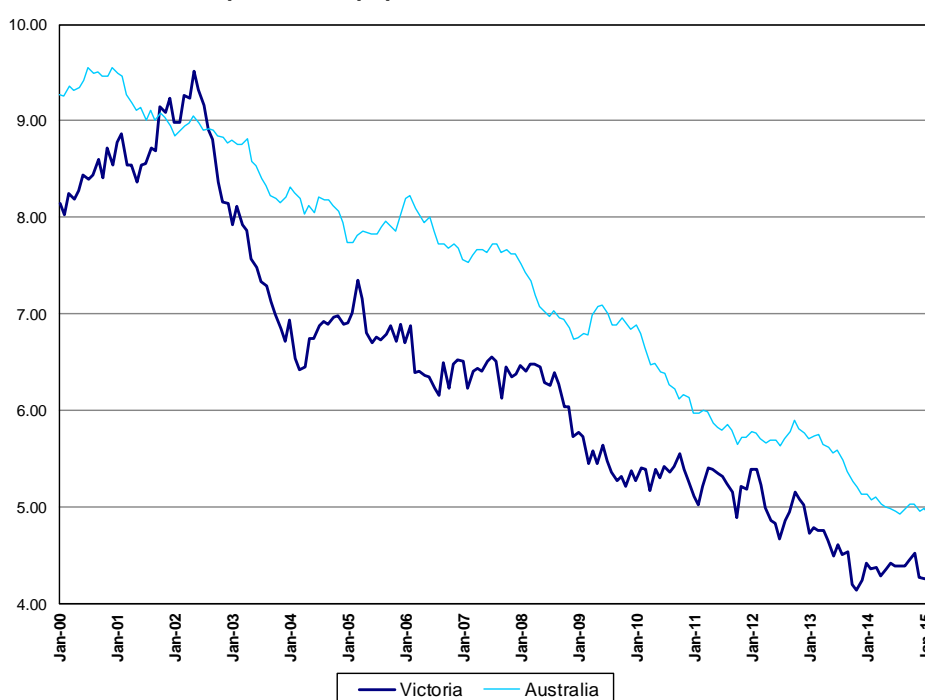
Week Ending	2009	2010	2011	2012	2013	2014	2015	Cumulative 2015	% Change 2015-2014	12 Month Moving Total
5-Jan	7	3	2	3	1	0	2	2	-	251
12-Jan	10	5	6	7	3	5	5	7	+40%	251
19-Jan	4	6	3	8	6	7	7	14	+17%	251
26-Jan	4	5	4	9	4	9	2	16	-24%	244
2-Feb	6	9	6	5	3	6	10	26	-4%	248
9-Feb	6	7	5	3	8	4	7	33	+6%	251
16-Feb	7	4	6	7	6	8	5	38	-3%	248
23-Feb	4	8	3	6	6	2	6	44	+7%	252
2-Mar	1	7	3	2	2	6	4	48	+2%	250
9-Mar	3	2	10	3	4	8	9	57	+4%	251
16-Mar	6	8	6	11	6	4	7	64	+8%	254
23-Mar	6	3	9	5	10	4	3	67	+6%	253
30-Mar	8	7	9	6	2	6	3	70	+1%	250
6-Apr	5	4	6	7	4	6				
13-Apr	5	5	9	2	6	6				
20-Apr	11	7	7	6	4	2				
27-Apr	9	1	6	3	5	2				
4-May	6	6	6	10	6	3				
11-May	7	8	6	2	3	4				
18-May	1	4	7	4	1	3				
25-May	2	11	10	6	2	5				
1-Jun	6	5	5	2	9	9				
8-Jun	4	7	4	8	2	2				
15-Jun	9	4	6	3	3	2				
22-Jun	7	8	7	8	5	3				
29-Jun	9	7	6	3	1	8				
6-Jul	3	7	4	2	5	6				
13-Jul	6	2	8	5	7	7				
20-Jul	4	3	6	5	4	3				
27-Jul	5	8	6	5	5	4				
3-Aug	4	10	3	1	8	4				
10-Aug	7	3	5	5	1	5				
17-Aug	6	5	3	5	3	6				
24-Aug	3	5	2	6	6	4				
31-Aug	3	1	3	8	5	5				
7-Sep	2	5	1	5	5	4				
14-Sep	4	1	4	6	2	6				
21-Sep	4	4	1	3	3	4				
28-Sep	3	5	5	3	8	3				
5-Oct	2	9	4	7	3	4				
12-Oct	6	10	5	8	2	8				
19-Oct	8	5	3	9	3	0				
26-Oct	8	7	3	6	3	8				
2-Nov	5	8	8	6	6	2				
9-Nov	3	1	6	7	8	3				
16-Nov	9	2	12	6	2	8				
23-Nov	6	3	9	5	8	3				
30-Nov	4	5	2	9	4	13				
7-Dec	5	4	10	7	6	5				
14-Dec	8	8	3	4	10	3				
21-Dec	11	6	7	1	9	3				
28-Dec	6	8	6	8	4	3				
31-Dec	2	2	1	1	1	1				
Total	290	288	287	282	243	249				

The National Picture

State	Fatalities (12 months to March)					2015 v 2014	
	2015	2014	2013	2012			
NSW	306	344	357	365	-38	(-11%)	
VIC	250	252	269	290	-2	(-1%)	
QLD	219	248	298	270	-29	(-12%)	
SA	103	92	100	100	+11	(+12%)	
WA	185	163	181	181	+22	(+13%)	
TAS	40	34	35	23	+6	(+18%)	
NT	38	43	46	49	-5	(-12%)	
ACT	7	7	16	0		(0%)	
AUST TOTAL	1,148	1,183	1,302	1,278	-35	(-3%)	
AUST minus VIC	898	931	1,033	988	-33	(-4%)	

State	Fatalities per 10,000 registered vehicles (12 months to March)			Fatalities per 100,000 population (12 months to March)		
	2015	2014	2013	2015	2014	2013
NSW	0.59	0.68	0.72	4.06	4.63	4.88
VIC	0.55	0.57	0.62	4.26	4.37	4.76
QLD	0.58	0.68	0.84	4.62	5.31	6.50
SA	0.77	0.70	0.77	6.10	5.49	6.03
WA	0.84	0.77	0.89	7.15	6.44	7.38
TAS	0.90	0.77	0.80	7.76	6.62	6.83
NT	2.46	2.85	3.15	15.42	17.85	19.49
ACT	0.25	0.25	0.59	1.81	1.82	4.25
AUST TOTAL	0.64	0.68	0.76	4.87	5.09	5.74
AUST minus VIC	0.67	0.71	0.81	5.02	5.32	6.05

Deaths per 100,000 population, Victoria v Australia 2000 - 2015



Victoria v Australia - 12 Month Moving Fatality Rate

Booze-Bus Random Breath Testing

12 months to December 2014 (monthly totals)

2014												
	Jan	Feb	Mar	Apr	May	Jun	Jul	Aug	Sep	Oct	Nov	Dec
Melbourne	110,393	93,988	106,404	96,725	107,794	103,200	110,427	110,124	101,857	100,252	86,261	99,008
Country	6,904	4,841	15,303	9,737	12,033	7,548	9,300	7,841	7,989	8,116	10,510	7,084
Vic Total	117,297	98,829	121,707	106,462	119,827	110,748	119,727	117,965	109,846	108,368	96,771	106,092

12 months to December 2014 vs previous 12 months

	2014	2013	2012	2014 v 2013		2014 v 2012	
Melbourne	1,226,433	1,008,694	1,059,920	+217739	(+22%)	+166513	(+16%)
Country	107,206	85,810	110,484	+21396	(+25%)	-3278	(-3%)
Vic Total	1,333,639	1,094,504	1,170,404	+239135	(+22%)	+163235	(+14%)

Mobile Safety Camera Data

Speed Infringements Issued from Mobile Cameras (monthly totals)

Monthly Average = 35,454

2014

Jan	Feb	Mar	Apr	May	Jun	Jul	Aug	Sep	Oct	Nov	Dec
43,483	33,876	33,569	29,399	44,981	34,108	42,640	34,202	32,625	35,422	32,416	28,732

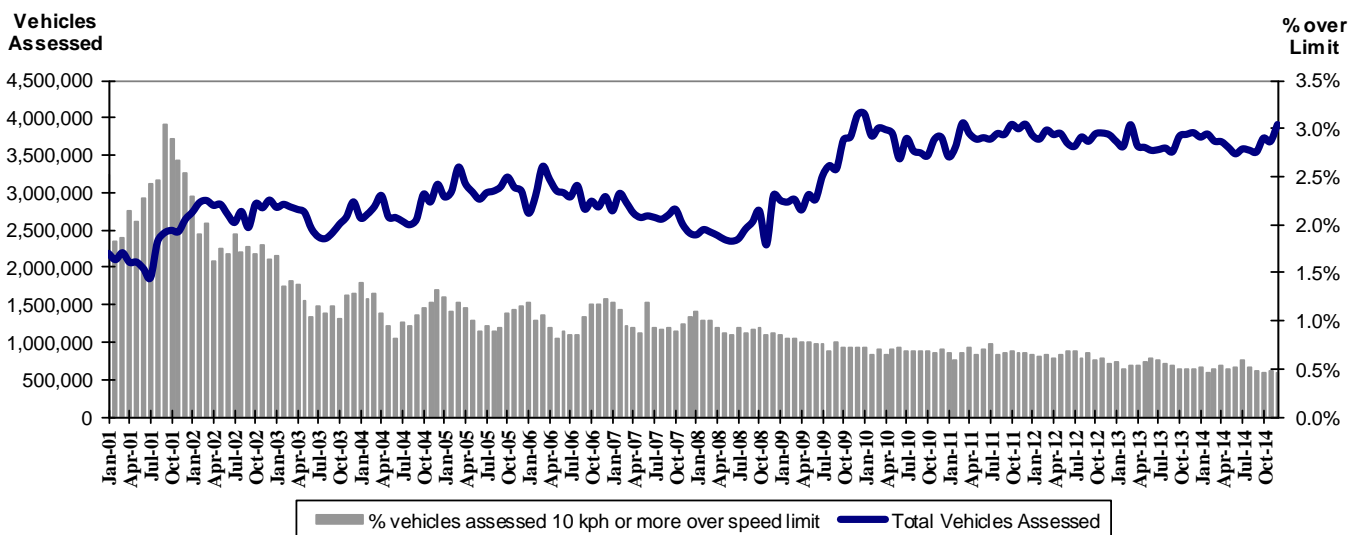
Excessive Speed Infringements (ESI) Issued from Mobile Cameras (monthly totals)

Monthly Average = 314

2014

Jan	Feb	Mar	Apr	May	Jun	Jul	Aug	Sep	Oct	Nov	Dec
366	314	270	252	366	316	390	317	292	334	287	258

Notes: An ESI is defined as 25km/h over the speed limit except in a 110km/h zone where it is 20km/h over the limit.



Mobile Safety Cameras – Vehicles assessed and percentage of vehicles assessed 10km/h or more over speed limit per month

Explanations and References

Hi-AlcTime is those times of the day and week (*shaded* in the table below) when casualty crashes are ten times more likely to involve alcohol than casualty crashes at other (Lo-AlcTime) times.

	12am - 6am	6am - 8am	8am - 10am	10am - 2pm	2pm - 4pm	4pm - 6pm	6pm - 12pm
Monday							
Tuesday							
Wednesday							
Thursday							
Friday							
Saturday							
Sunday							

Police Service Areas align with Local Government Areas. Most Police Service Areas are equivalent to a single Local Government Area, while the remainder comprise two or three Local Government Areas.

Police Service Area	Local Government Area(s)	Police Service Area	Local Government Area(s)
BALLARAT	BALLARAT, PYRENEES	MAROONDAH	MAROONDAH
BANYULE	BANYULE	MELBOURNE	MELBOURNE
BASS COAST	BASS COAST, SOUTH GIPPSLAND	MELTON	MELTON
BAW BAW	BAWBAW	MILDURA	MILDURA
BENALLA	BENALLA, MANSFIELD, MURRINDINDI	MITCHELL	MITCHELL, STRATHBOGIE
BENDIGO	GREATER BENDIGO	MONASH	MONASH
BOROONDARA	BOROONDARA	MOONEE VALLEY	MOONEE VALLEY
BRIMBANK	BRIMBANK	MOORABOOL	GOLDEN PLAINS, HEPBURN, MOORABOOL
CAMPASPE	CAMPASPE	MORELAND	MORELAND
CARDINIA	CARDINIA	MORNINGTON PENINSULA	MORNINGTON PENINSULA
CASEY	CASEY	NILLUMBIK	NILLUMBIK
CENTRAL GOLDFIELDS	CENTRAL GOLDFIELDS, LODDON	NORTHERN GRAMPIANS	ARARAT, NORTHERN GRAMPIANS, YARRIAMIACK
GREATER DANDENONG	GREATER DANDENONG	PORT PHILLIP	PORT PHILLIP
DAREBIN	DAREBIN	SHEPPARTON	GREATER SHEPPARTON
EAST GIPPSLAND	EAST GIPPSLAND	SOUTHERN GRAMPIANS	GLENELG, SOUTHERN GRAMPIANS
FRANKSTON	FRANKSTON	STONNINGTON	STONNINGTON
GEELONG	GREATER GEELONG, QUEENSCLIFF	SURFCOAST	SURFCOAST, COLAC OTWAY
GLENEIRA	GLENEIRA, BAYSIDE	SWANHILL	BULOKE, GANNAWARRA, SWAN HILL
HOBSONS BAY	HOBSONSBAY	WANGARATTA	ALPINE, MOIRA, WANGARATTA
HORSHAM	HINDMARSH, HORSHAM, WESTWIMMERA	WARRNAMBOOL	CORANGAMITE, MOYNE, WARRNAMBOOL
HUME	HUME	WELLINGTON	WELLINGTON
KINGSTON	KINGSTON	WHITEHORSE	WHITEHORSE
KNOX	KNOX	WHITTLESEA	WHITTLESEA
LATROBE	LATROBE	WODONGA	INDIGO, TOWONG, WODONGA
MACEDON RANGES	MOUNT ALEXANDER, MACEDON RANGES	WYNDHAM	WYNDHAM
MANNINGHAM	MANNINGHAM	YARRA	YARRA
MARIBYRNONG	MARIBYRNONG	YARRA RANGES	YARRA RANGES

Useful Internet Sites

TAC Sites

- TAC Safety (Road Safety) www.tacsafety.com.au
- TAC How safe is your car www.howsafeisyourcar.com.au
- TAC Learners Log www.learnerslog.com.au
- TAC Motorcycle Safety Website www.spokes.com.au
- TAC Corporate site www.tac.vic.gov.au

Victorian Sites:

- VicRoads www.vicroads.vic.gov.au
- Victoria Police www.police.vic.gov.au
- Parliamentary Road Safety Committee www.parliament.vic.gov.au/rsc/
- ARRB Transport Research www.arrb.com.au
- RACV www.racv.com.au
- Monash University Accident Research Centre www.monash.edu.au/muarc
- Roadsafe www.roadsafe.org.au
- Cameras Save Lives www.camerassavelives.vic.gov.au

National and Interstate Sites:

- Australian Transport Safety Bureau www.atsb.gov.au
- Roads and Traffic Authority (NSW) www.rta.nsw.gov.au
- Queensland Transport - Road Safety transport.qld.gov.au/Home/Safety/Road
- Department of Transport (SA) www.transport.sa.gov.au/index.htm
- Main Roads Western Australia - Road Safety www.mrwa.wa.gov.au

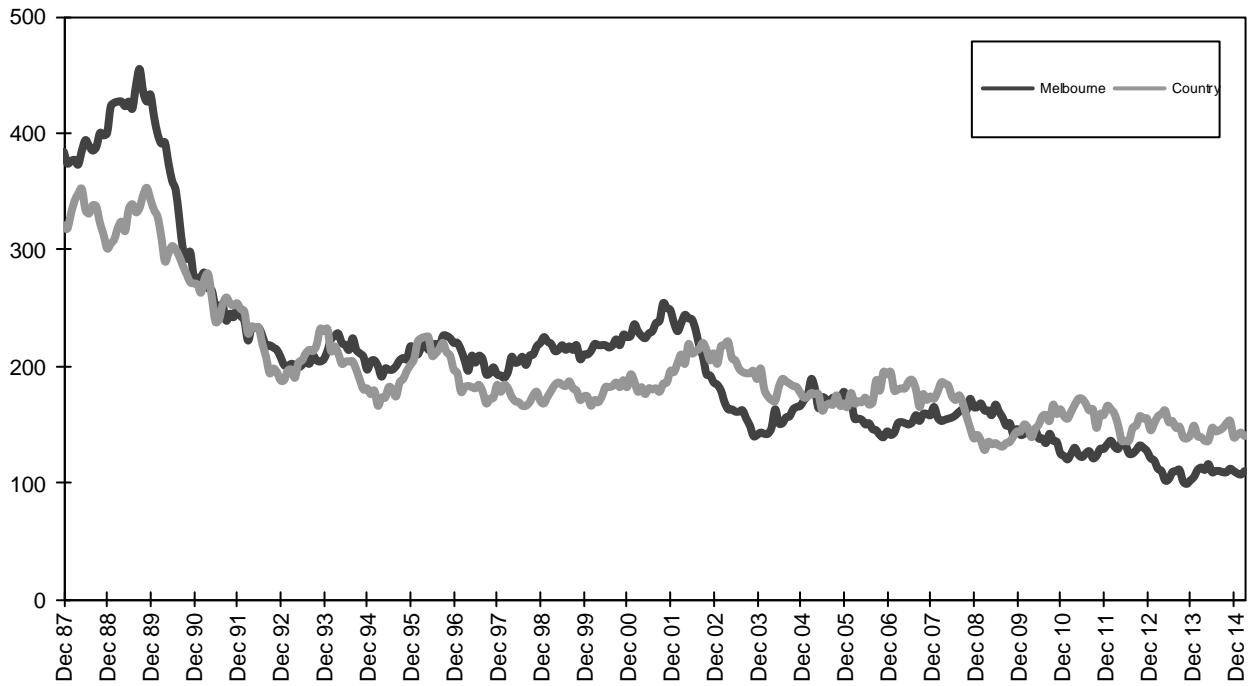
International Sites:

- National Highway Traffic Safety Admin (USA) www.nhtsa.dot.gov
- Swedish Road and Transport Institute (VTI) www.vti.se
- SWOV Institute for Road Safety Research www.swov.nl

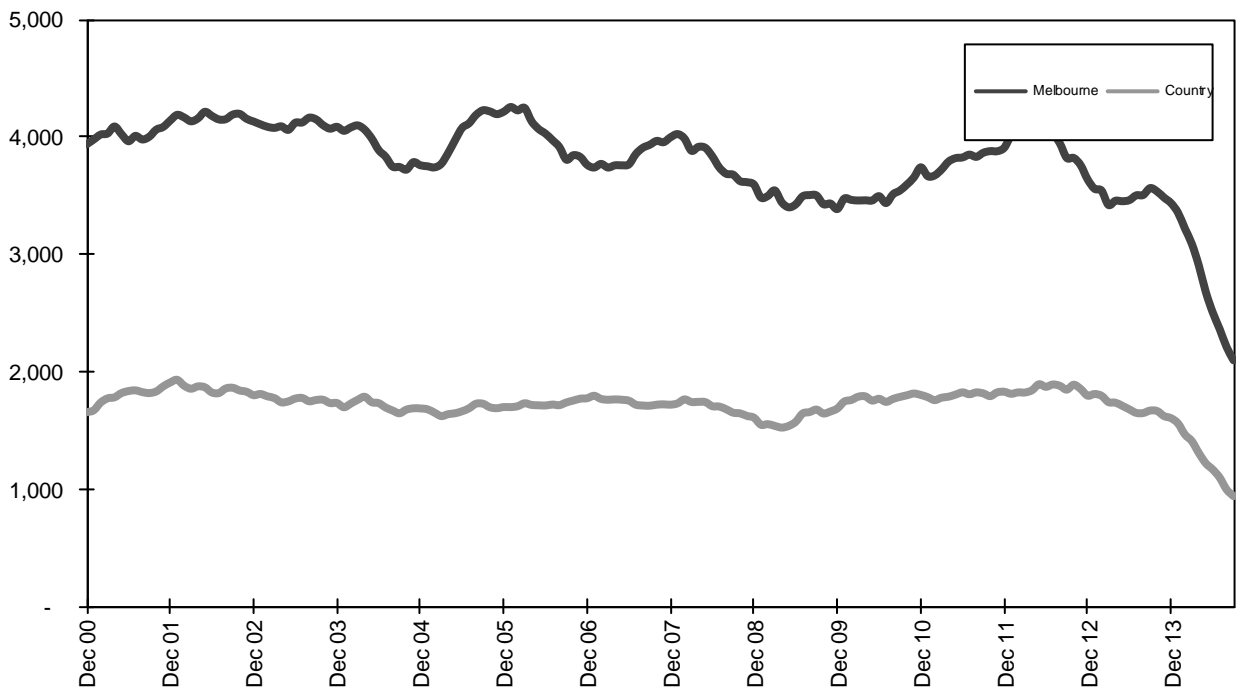
Related Sites:

- Australian Drug Foundation www.adf.org.au
- Amy Gillett Foundation www.amygillett.org.au

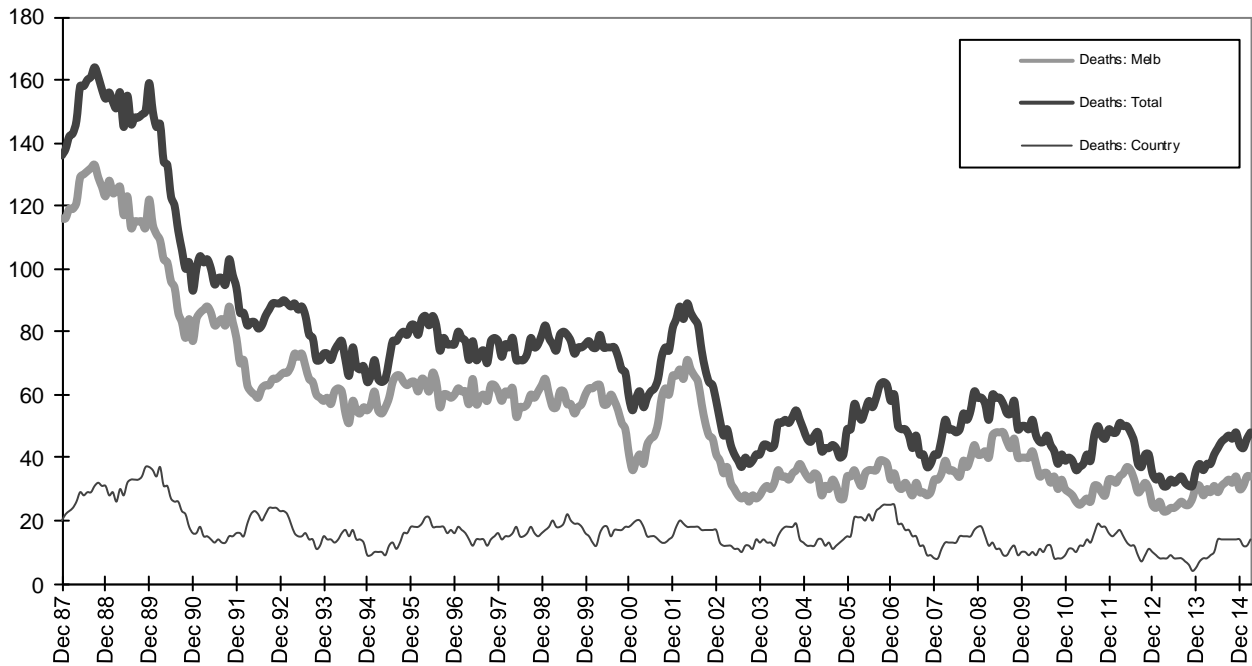
Figures



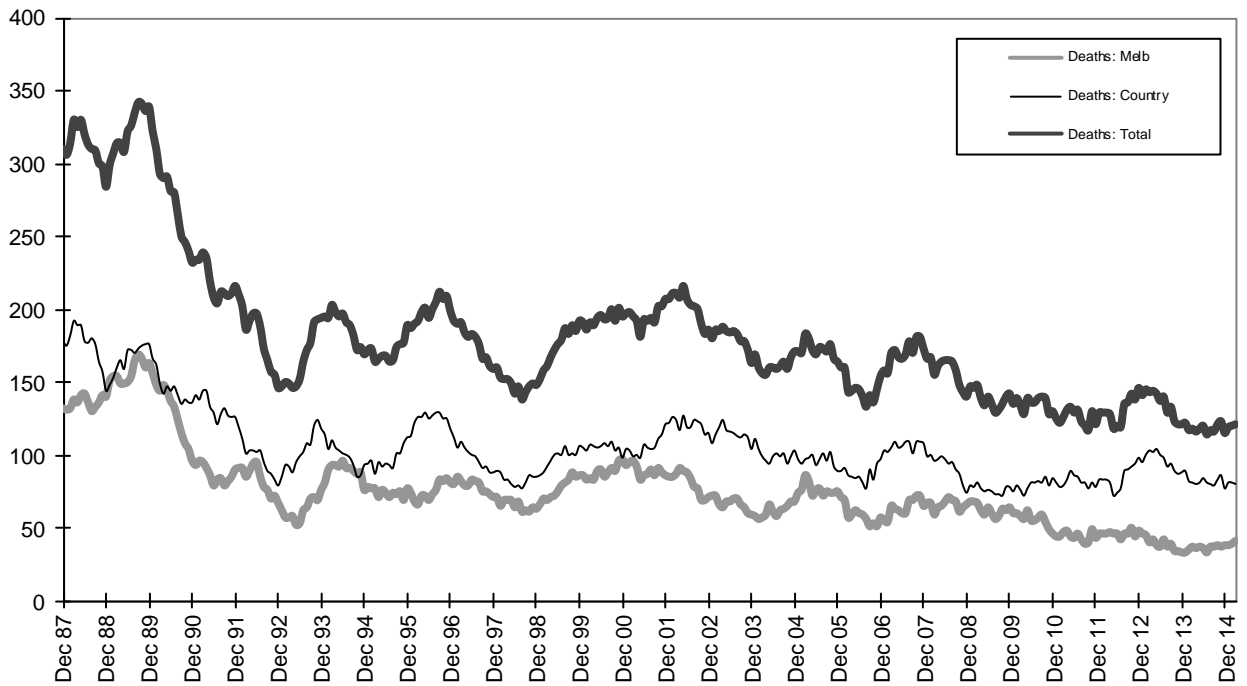
Graph 1a - Melbourne/country fatalities



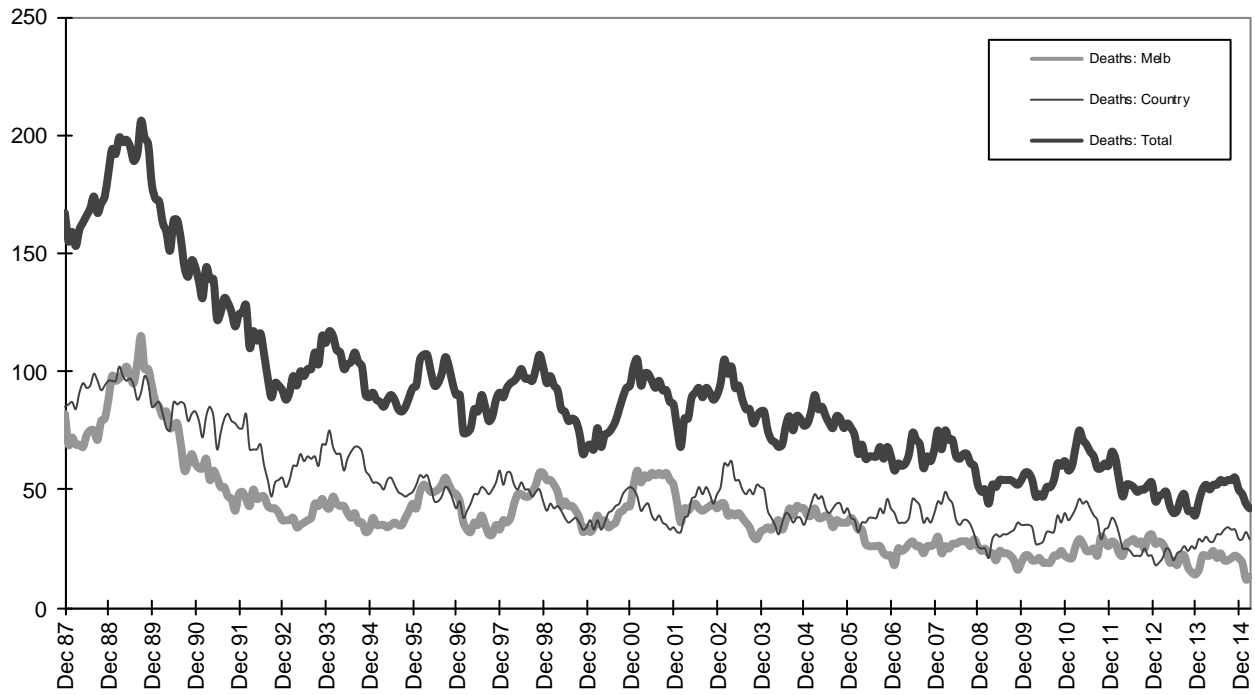
Graph 1b - Melbourne/country Claims involving an acute hospital admission



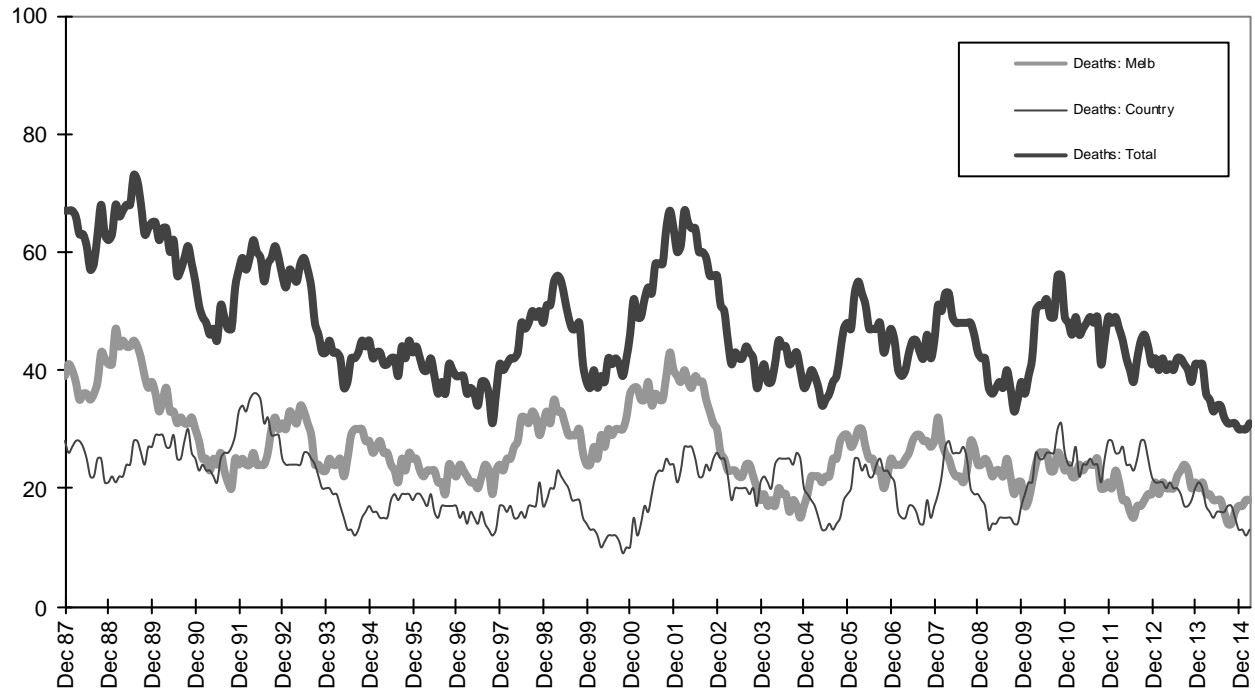
Graph 2a - Pedestrian fatalities (Melbourne/country)



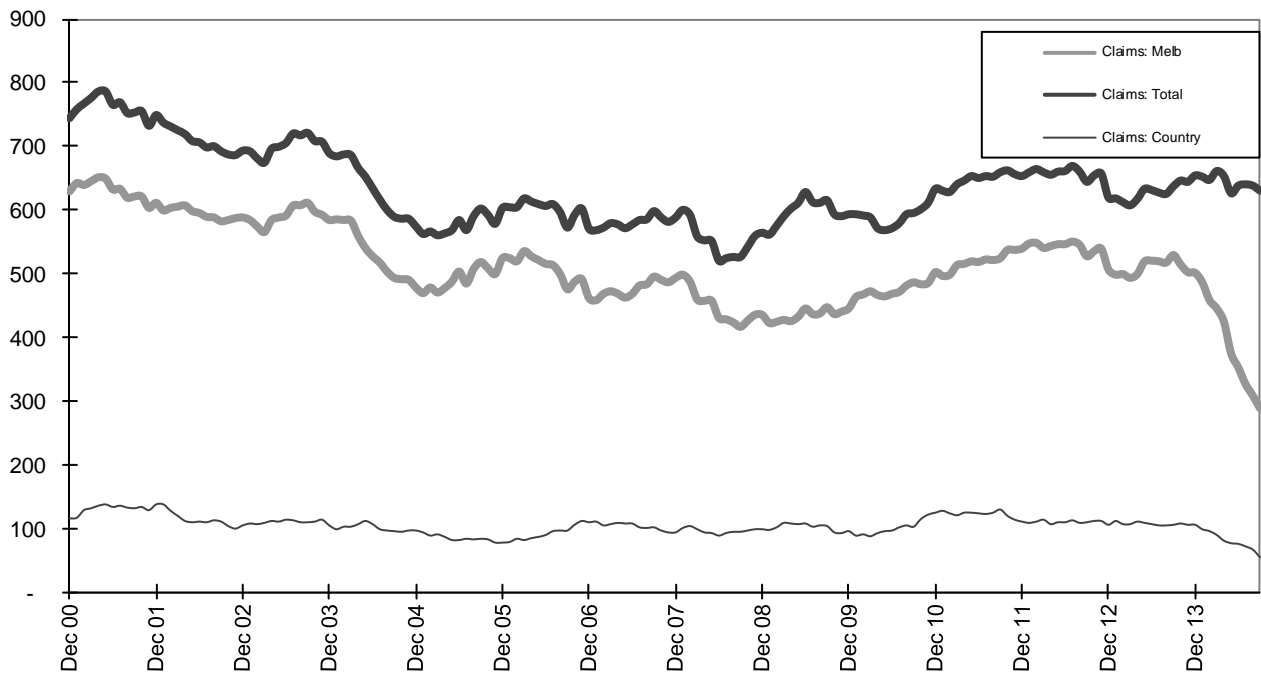
Graph 2b - Driver fatalities (Melbourne/country)



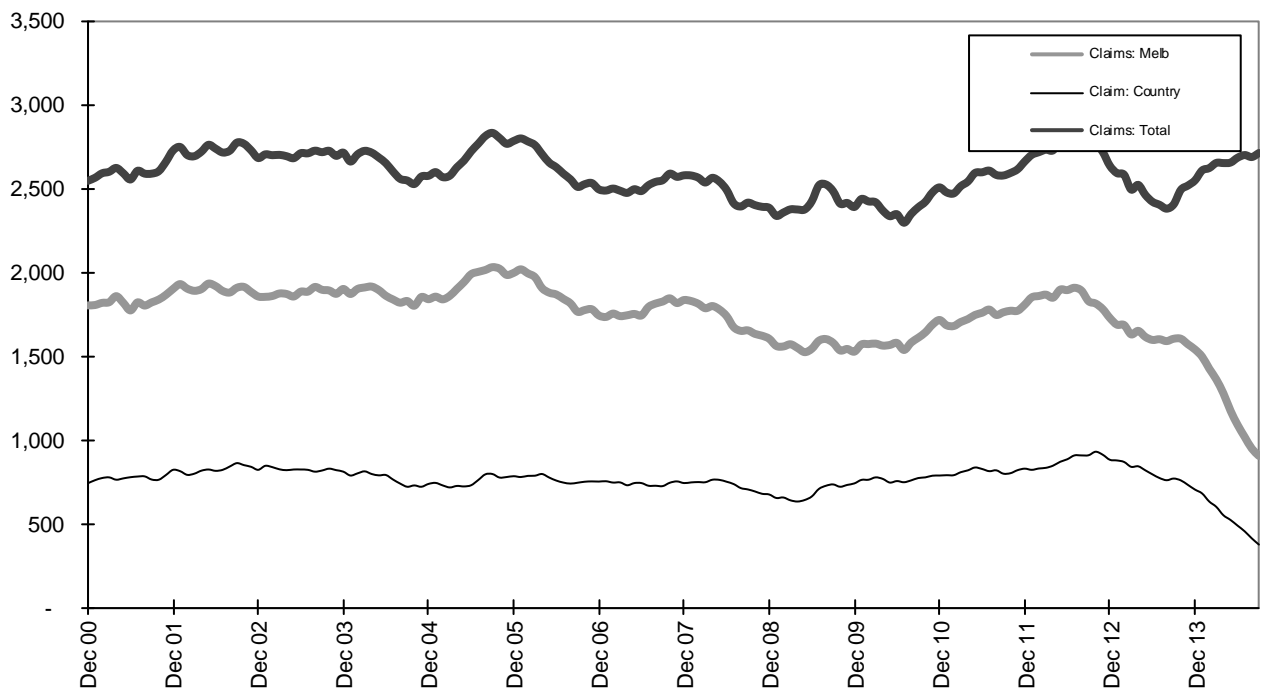
Graph 2c - Passenger fatalities (Melbourne/country)



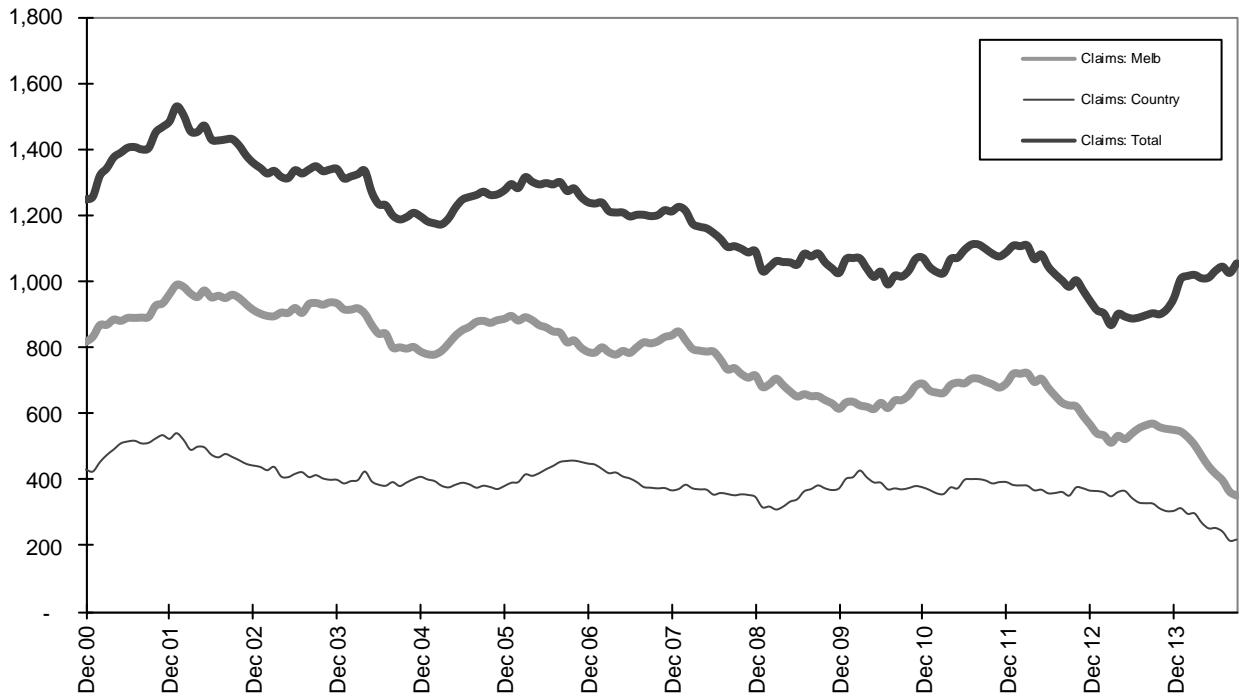
Graph 2d - Motorcyclist fatalities (Melbourne/country)



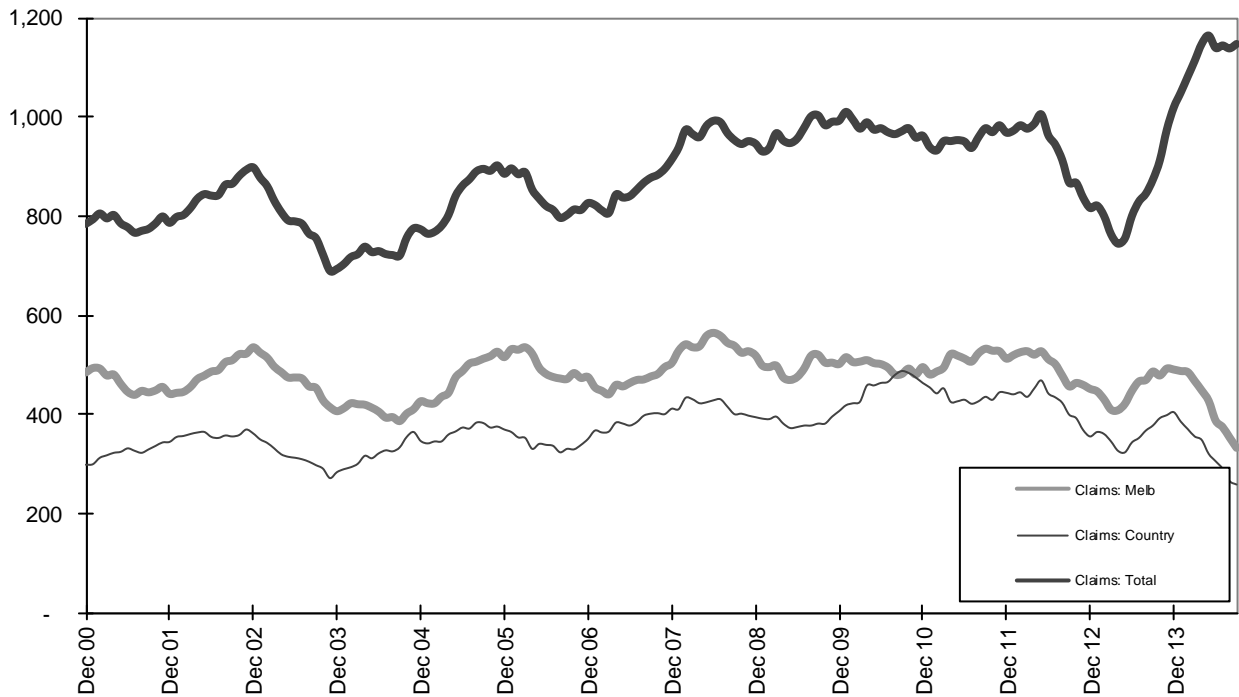
Graph 3a - Pedestrian Claims involving an acute hospital admission (Melbourne/country)



Graph 3b - Driver Claims involving an acute hospital admission (Melbourne/country)



Graph 3c - Passenger Claims involving an acute hospital admission (Melbourne/country)



Graph 3d - Motorcyclist Claims involving an acute hospital admission (Melbourne/country)