



# ROAD SAFETY STATISTICAL SUMMARY

## October 2012



**TRANSPORT  
ACCIDENT  
COMMISSION**

60 Brougham Street  
Geelong Vic 3220  
PO Box 742  
Geelong Vic 3220  
Ausdoc DX 216079 Geelong

Telephone 1300 654 329  
STD Toll Free 1800 332 556  
Fax: 03 9656 9300  
[www.tac.vic.gov.au](http://www.tac.vic.gov.au)  
ABN 22 033 947 623





## Contents

Status Report.....	4
Fatalities.....	4
Claims involving acute hospitalisation over 14 days and an acute hospital admission* .....	5
Fatalities: 12 months to October .....	6
Claims involving acute hospitalisation over 14 days: 12 months to April (claim acceptance date).....	8
Claims involving an acute hospital admission: 12 months to April (claim acceptance date).....	10
Fatalities: Victorian monthly totals since 1951 .....	12
Fatalities by Week (2007 to 2012).....	13
Alcohol Related Fatalities.....	14
The National Picture .....	15
Booze-Bus Random Breath Testing* .....	16
Mobile Safety Camera Data .....	16
Explanations and References .....	17
Useful Internet Sites.....	18
Figures .....	19

### Note about the data in this report

- All data provided in this report is the data most recently available at time of production. Fatalities, breath-test data and safety camera data are updated to the end of report month. A 6-month lag applies to TAC claims data, and a 2-month lag applies to alcohol related fatalities data.
- Note that reported data inclusive of February 2008 or February 2012 will have one extra day of exposure compared to non-leap years.

\*An acute hospital admission refers to a hospital admission that occurred within 7 days of accident.

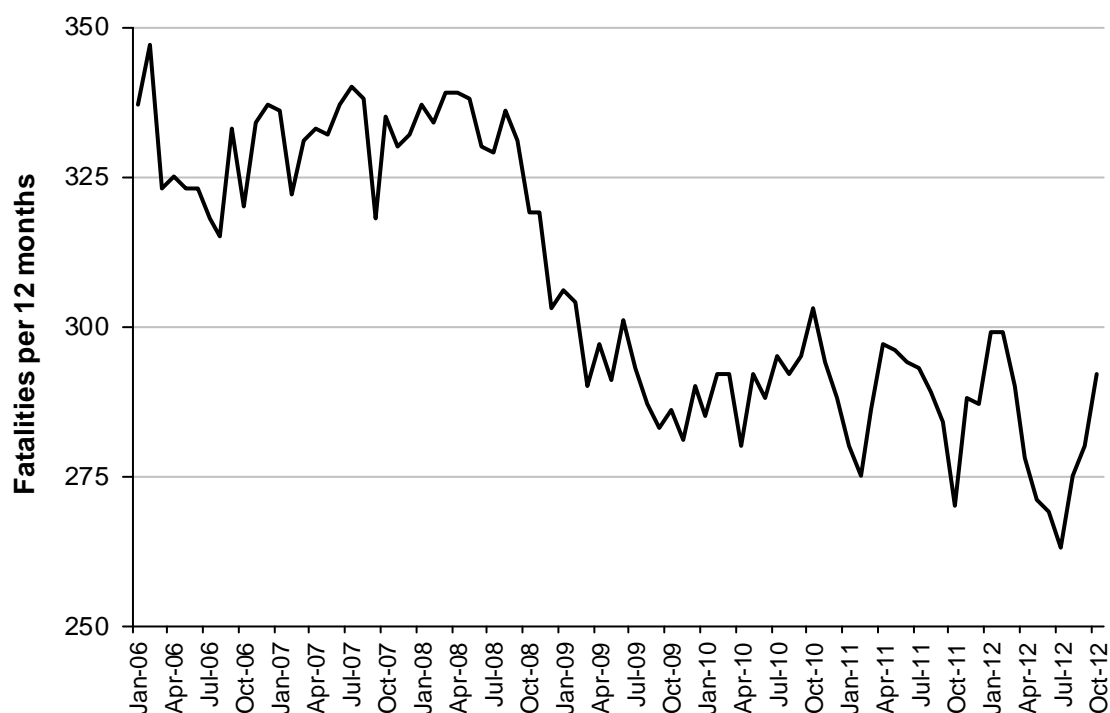
## Status Report

### Fatalities

- The number of road fatalities in 2012 stands at 235, 2.2% more than at the same stage in 2011 (230).
- 17 people were fatally injured in September 2012 and 34 in October 2012 on Victorian roads. This compares to 12 in September 2011 and 22 in October 2011.

### Fatalities (year to date, to end October 2012)

Category	2012	2011	2010	2012 v 2011		2012 v 2010		5 Year Av
<b>Fatal Injuries (Rolling 12 Month Total)</b>								
Fatal (to October)	292	270	303	22	(8%)	-11	(-4%)	303
per 10,000 veh	0.65	0.69	0.71	-0.04	(-6%)	-0.06	(-8%)	0.61
per 100,000 pop	4.92	5.16	5.30	-0.24	(-5%)	-0.38	(-7%)	6.09
<b>Accidents (Rolling 12 Month Total)</b>								
Fatal (to October)	270	250	277	20	(8%)	-7	(-3%)	275
per 10,000 veh	0.59	0.64	0.66	-0.05	(-8%)	-0.07	(-11%)	0.71
per 100,000 pop	4.49	4.79	4.88	-0.3	(-6%)	-0.39	(-8%)	5.28

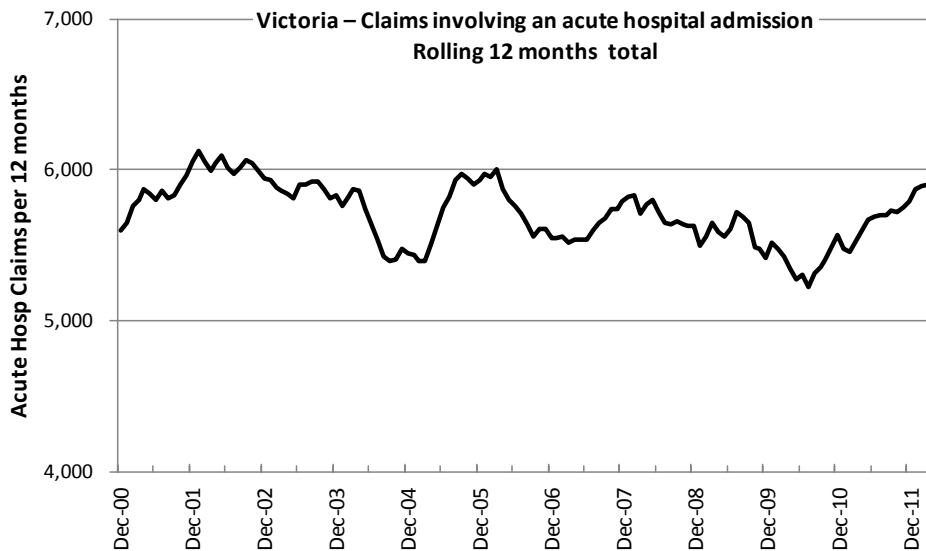
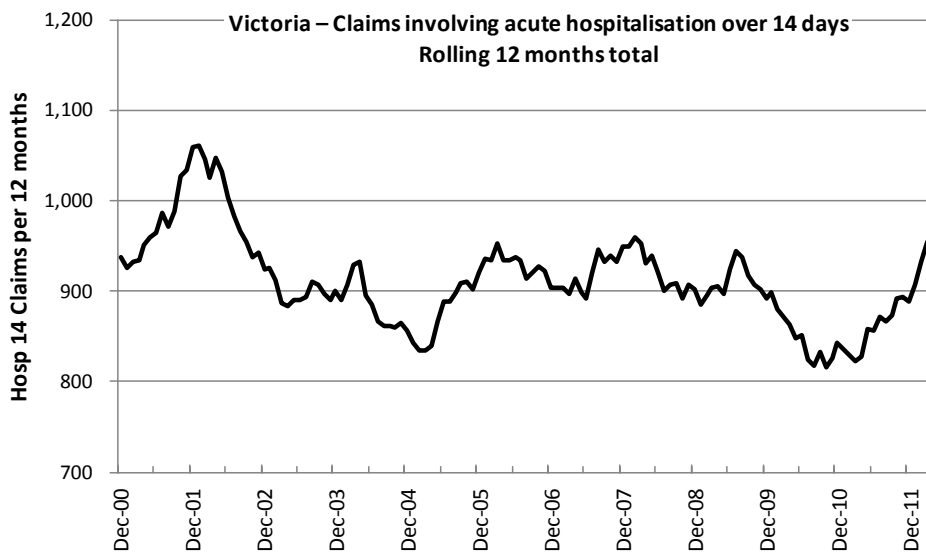


Victoria – Fatalities, rolling 12 months total

Note: Data is subject to revision as additional information about known accidents is received, and as new accident reports are received and processed.

**Claims involving acute hospitalisation over 14 days and an acute hospital admission\***  
 (by claim acceptance date - year to date, to midnight 30 April 2012)

Category	2012	2011	2010	2012 v 2011	2012 v 2010	5 Year Av
<b>Claims involving acute hospitalisation over 14 days (Rolling 12 Month Total)</b>						
Claims (to April)	958	827	864	131	(16%)	888
per 10,000 veh	17.0	14.8	15.8	2.2	(15%)	17.0
per 100,000 pop	2.2	2.0	2.1	0.2	(10%)	2.3
<b>Claims involving an acute hospital admission (Rolling 12 Month Total)</b>						
Claims (to April)	5,893	5,601	5,345	292	(5%)	5,571
per 10,000 veh	104.3	100.5	97.8	3.8	(4%)	105.4
per 100,000 pop	13.8	13.4	13.1	0.4	(3%)	14.2



Note: Data is subject to revision as additional information about known claims is received, and as new claims are received and processed.

\*An acute hospital admission refers to a hospital admission that occurred within 7 days of accident.

## Fatalities: 12 months to October

Category	2012	2011	2010	2012 v 2011		2012 v 2010		5 Year Av
<b>Overview</b>								
Fatalities	292	270	303	22	(8%)	-11	(-4%)	303
Accidents	270	250	277	20	(8%)	-7	(-3%)	275
<b>Sex</b>								
Male	209	195	230	14	(7%)	-21	(-9%)	218
Female	83	75	73	8	(11%)	10	(14%)	84
<b>Roaduser</b>								
Bicyclist	10	6	9	4	(67%)	1	(11%)	7
Driver	145	117	139	28	(24%)	6	(4%)	144
Motorcyclist	47	41	56	6	(15%)	-9	(-16%)	45
Passenger	49	59	61	-10	(-17%)	-12	(-20%)	60
Pedestrian	41	47	38	-6	(-13%)	3	(8%)	47
<b>Location</b>								
Melbourne	133	123	136	10	(8%)	-3	(-2%)	146
Rural Victoria	159	147	167	12	(8%)	-8	(-5%)	156
<b>Agegroup</b>								
0-4	4	6	6	-2	(-33%)	-2	(-33%)	5
5-15	5	10	8	-5	(-50%)	-3	(-38%)	9
16-17	5	9	6	-4	(-44%)	-1	(-17%)	9
18-20	33	28	32	5	(18%)	1	(3%)	34
21-25	27	36	35	-9	(-25%)	-8	(-23%)	37
26-29	22	16	27	6	(38%)	-5	(-19%)	23
30-39	47	29	43	18	(62%)	4	(9%)	42
40-49	27	37	39	-10	(-27%)	-12	(-31%)	39
50-59	41	29	35	12	(41%)	6	(17%)	36
60-69	35	24	27	11	(46%)	8	(30%)	24
70+	45	46	45	-1	(-2%)	0	(0%)	45
<b>Alctime</b>								
High (Melb)	58	70	77	-12	(-17%)	-19	(-25%)	78
High (Rural)	79	72	85	7	(10%)	-6	(-7%)	74
High (Vic)	137	142	162	-5	(-4%)	-25	(-15%)	152
Low (Melb)	75	53	59	22	(42%)	16	(27%)	68
Low (Rural)	80	75	82	5	(7%)	-2	(-2%)	82
Low (Vic)	155	128	141	27	(21%)	14	(10%)	150
<b>Accident Type</b>								
<b>Intersection</b>								
Adjacent direction	31	28	28	3	(11%)	3	(11%)	25
Opposing direction	5	7	7	-2	(-29%)	-2	(-29%)	8
<b>Mid-block/other</b>								
Head on	43	34	39	9	(26%)	4	(10%)	39
Same direction	14	12	22	2	(17%)	-8	(-36%)	17
Manoeuvre/o'taking	19	12	21	7	(58%)	-2	(-10%)	16
On path	8	4	10	4	(100%)	-2	(-20%)	7
Single vehicle	121	119	131	2	(2%)	-10	(-8%)	131
Other (incl peds)	51	54	45	-3	(-6%)	6	(13%)	59

## Fatalities: 12 months to October – Continued

Category	2012	2011	2010	2012 v 2011		2012 v 2010		5 Year Av
<b>Police Service Area (based on Local Government Area (see p.13))</b>								
BALLARAT	3	8	8	-5	(-63%)	-5	(-63%)	7
BANYULE	4	3	1	1	(33%)	3	(300%)	2
BASS COAST	5	9	4	-4	(-44%)	1	(25%)	7
BAW BAW	3	10	8	-7	(-70%)	-5	(-63%)	8
BENALLA	7	10	10	-3	(-30%)	-3	(-30%)	8
BENDIGO	10	5	7	5	(100%)	3	(43%)	6
BOROONDARA	2	2	2	0	(0%)	0	(0%)	4
BRIMBANK	9	10	5	-1	(-10%)	4	(80%)	7
CAMPASPE	9	3	2	6	(200%)	7	(350%)	3
CARDINIA	10	6	7	4	(67%)	3	(43%)	6
CASEY	6	9	9	-3	(-33%)	-3	(-33%)	11
CENTRAL GOLDFIELDS	2	6	4	-4	(-67%)	-2	(-50%)	5
DAREBIN	5	3	2	2	(67%)	3	(150%)	4
EAST GIPPSLAND	7	8	9	-1	(-13%)	-2	(-22%)	10
FRANKSTON	3	6	3	-3	(-50%)	0	(0%)	6
GEELONG	12	11	12	1	(9%)	0	(0%)	8
GLEN EIRA	3	5	5	-2	(-40%)	-2	(-40%)	5
GREATER DANDENONG	4	3	6	1	(33%)	-2	(-33%)	6
HOBSONS BAY	2	0	1	2	(200%)	1	(100%)	3
HORSHAM	6	4	5	2	(50%)	1	(20%)	3
HUME	6	3	8	3	(100%)	-2	(-25%)	7
KINGSTON	9	1	3	8	(800%)	6	(200%)	4
KNOX	1	1	3	0	(0%)	-2	(-67%)	4
LA TROBE	9	2	7	7	(350%)	2	(29%)	6
MACEDON RANGES	6	3	8	3	(100%)	-2	(-25%)	6
MANNINGHAM	2	1	5	1	(100%)	-3	(-60%)	3
MARIBYRNONG	4	1	1	3	(300%)	3	(300%)	2
MAROONDAH	5	3	2	2	(67%)	3	(150%)	2
MELBOURNE	4	6	4	-2	(-33%)	0	(0%)	6
MELTON	7	8	5	-1	(-13%)	2	(40%)	6
MILDURA	0	4	5	-4	(-100%)	-5	(-100%)	5
MITCHELL	11	4	12	7	(175%)	-1	(-8%)	9
MONASH	4	5	3	-1	(-20%)	1	(33%)	6
MOONEE VALLEY	1	1	2	0	(0%)	-1	(-50%)	3
MOORABOOL	10	10	8	0	(0%)	2	(25%)	7
MORELAND	4	3	7	1	(33%)	-3	(-43%)	4
MORNINGTON PENINSULA	8	7	10	1	(14%)	-2	(-20%)	10
NILLUMBIK	4	2	1	2	(100%)	3	(300%)	1
NORTHERN GRAMPIANS	7	2	4	5	(250%)	3	(75%)	3
PORT PHILLIP	1	2	2	-1	(-50%)	-1	(-50%)	2
SHEPPARTON	11	4	4	7	(175%)	7	(175%)	6
SOUTHERN GRAMPIANS	9	1	4	8	(800%)	5	(125%)	5
STONNINGTON	1	2	0	-1	(-50%)	1	(50%)	2
SURF COAST	5	12	10	-7	(-58%)	-5	(-50%)	9
SWAN HILL	4	5	7	-1	(-20%)	-3	(-43%)	8
WANGARATTA	9	13	10	-4	(-31%)	-1	(-10%)	12
WARRNAMBOOL	4	5	9	-1	(-20%)	-5	(-56%)	6
WELLINGTON	3	7	4	-4	(-57%)	-1	(-25%)	6
WHITEHORSE	4	5	7	-1	(-20%)	-3	(-43%)	4
WHITTLESEA	6	4	15	2	(50%)	-9	(-60%)	7
WODONGA	5	1	6	4	(400%)	-1	(-17%)	4
WYNDHAM	8	9	5	-1	(-11%)	3	(60%)	6
YARRA	1	2	4	-1	(-50%)	-3	(-75%)	3
YARRA RANGES	7	10	8	-3	(-30%)	-1	(-13%)	11

## Claims involving acute hospitalisation over 14 days: 12 months to April (claim acceptance date)

Category	2012	2011	2010	2012 v 2011	2012 v 2010	5 Year Av
<b>Overview</b>						
Claims	958	827	864	131 (16%)	94 (11%)	888
<b>Sex</b>						
Male	554	523	528	31 (6%)	26 (5%)	539
Female	403	304	336	99 (33%)	67 (20%)	349
<b>Roaduser</b>						
Bicyclist	38	44	36	-6 (-14%)	2 (6%)	37
Driver	353	320	321	33 (10%)	32 (10%)	334
Motorcyclist	177	167	181	10 (6%)	-4 (-2%)	164
Passenger	167	120	154	47 (39%)	13 (8%)	159
Pedestrian	195	166	159	29 (17%)	36 (23%)	168
Tram/train	9	8	3	1 (13%)	6 (200%)	4
<b>Location</b>						
Melbourne	622	543	538	79 (15%)	84 (16%)	568
Rural Victoria	322	279	315	43 (15%)	7 (2%)	294
<b>Agegroup</b>						
0-4	2	8	5	-6 (-75%)	-3 (-60%)	4
5-15	20	10	21	10 (100%)	-1 (-5%)	16
16-17	24	22	16	2 (9%)	8 (50%)	23
18-20	55	50	73	5 (10%)	-18 (-25%)	69
21-25	88	82	82	6 (7%)	6 (7%)	93
26-29	70	49	60	21 (43%)	10 (17%)	52
30-39	126	103	125	23 (22%)	1 (1%)	125
40-49	122	115	111	7 (6%)	11 (10%)	117
50-59	108	92	91	16 (17%)	17 (19%)	99
60-69	115	97	80	18 (19%)	35 (44%)	91
70+	228	199	200	29 (15%)	28 (14%)	199
<b>Alctime</b>						
High (Melb)	280	225	225	55 (24%)	55 (24%)	255
High (Rural)	134	115	115	19 (17%)	19 (17%)	125
High (Vic)	414	754	754	-340 (-45%)	-340 (-45%)	380
Low (Melb)	342	318	318	24 (8%)	24 (8%)	312
Low (Rural)	188	164	164	24 (15%)	24 (15%)	169
Low (Vic)	530	1,012	1,012	-482 (-48%)	-482 (-48%)	482
<b>Accident Type</b>						
<b>Intersection</b>						
Adjacent direction	124	112	125	12 (11%)	-1 (-1%)	118
Opposing direction	70	58	62	12 (21%)	8 (13%)	59
<b>Mid-block/other</b>						
Head on	79	86	65	-7 (-8%)	14 (22%)	76
Same direction	90	92	80	-2 (-2%)	10 (13%)	77
Manoeuvre/o'taking	52	48	48	4 (8%)	4 (8%)	51
On path	23	18	35	5 (28%)	-12 (-34%)	23
Single vehicle	275	222	262	53 (24%)	13 (5%)	266
Other (incl peds)	245	191	187	54 (28%)	58 (31%)	189

Note: excludes rejected claims and claims for interstate crashes



## Claims involving acute hospitalisation over 14 days: 12 months to April (claim acceptance date) - Continued

Category	2012	2011	2010	2012 v 2011		2012 v 2010		5 Year Av
<b>Police Service Area (based on Local Government Area (see p.13))</b>								
BALLARAT	16	14	8	2	(14%)	8	(100%)	12
BANYULE	8	13	13	-5	(-38%)	-5	(-38%)	10
BASS COAST	20	11	21	9	(82%)	-1	(-5%)	19
BAW BAW	20	4	8	16	(400%)	12	(150%)	6
BENALLA	19	15	19	4	(27%)	0	(0%)	15
BENDIGO	17	24	14	-7	(-29%)	3	(21%)	14
BOROONDARA	29	22	25	7	(32%)	4	(16%)	21
BRIMBANK	29	16	19	13	(81%)	10	(53%)	20
CAMPASPE	7	2	4	5	(250%)	3	(75%)	6
CARDINIA	16	19	16	-3	(-16%)	0	(0%)	17
CASEY	21	24	37	-3	(-13%)	-16	(-43%)	35
CENTRAL GOLDFIELDS	2	2	1	0	(0%)	1	(100%)	3
DAREBIN	13	20	21	-7	(-35%)	-8	(-38%)	21
EAST GIPPSLAND	12	15	14	-3	(-20%)	-2	(-14%)	15
FRANKSTON	19	16	18	3	(19%)	1	(6%)	18
GEELONG	30	21	25	9	(43%)	5	(20%)	29
GLEN EIRA	34	30	31	4	(13%)	3	(10%)	30
GREATER DANDENONG	33	26	29	7	(27%)	4	(14%)	27
HOBSONS BAY	11	8	8	3	(38%)	3	(38%)	10
HORSHAM	11	5	13	6	(120%)	-2	(-15%)	5
HUME	29	21	24	8	(38%)	5	(21%)	27
KINGSTON	20	15	27	5	(33%)	-7	(-26%)	19
KNOX	16	14	14	2	(14%)	2	(14%)	16
LA TROBE	17	18	7	-1	(-6%)	10	(143%)	13
MACEDON RANGES	12	17	25	-5	(-29%)	-13	(-52%)	15
MANNINGHAM	17	10	11	7	(70%)	6	(55%)	11
MARIBYRNONG	14	17	15	-3	(-18%)	-1	(-7%)	14
MAROONDAH	15	12	5	3	(25%)	10	(200%)	11
MELBOURNE	24	38	27	-14	(-37%)	-3	(-11%)	27
MELTON	13	10	10	3	(30%)	3	(30%)	9
MILDURA	10	8	4	2	(25%)	6	(150%)	6
MITCHELL	10	15	19	-5	(-33%)	-9	(-47%)	15
MONASH	26	24	20	2	(8%)	6	(30%)	26
MOONEE VALLEY	20	10	14	10	(100%)	6	(43%)	14
MOORABOOL	11	13	22	-2	(-15%)	-11	(-50%)	16
MORELAND	20	23	13	-3	(-13%)	7	(54%)	22
MORNINGTON PENINSULA	32	35	20	-3	(-9%)	12	(60%)	26
NILLUMBIK	5	6	1	-1	(-17%)	4	(400%)	5
NORTHERN GRAMPIANS	7	4	1	3	(75%)	6	(600%)	6
PORT PHILLIP	16	7	17	9	(129%)	-1	(-6%)	16
SHEPPARTON	8	9	13	-1	(-11%)	-5	(-38%)	15
SOUTHERN GRAMPIANS	8	11	10	-3	(-27%)	-2	(-20%)	8
STONNINGTON	23	19	12	4	(21%)	11	(92%)	16
SURF COAST	16	12	12	4	(33%)	4	(33%)	11
SWAN HILL	3	4	7	-1	(-25%)	-4	(-57%)	7
WANGARATTA	16	19	20	-3	(-16%)	-4	(-20%)	17
WARRNAMBOOL	20	9	15	11	(122%)	5	(33%)	10
WELLINGTON	9	10	13	-1	(-10%)	-4	(-31%)	11
WHITEHORSE	18	24	22	-6	(-25%)	-4	(-18%)	22
WHITTLESEA	24	15	18	9	(60%)	6	(33%)	16
WODONGA	11	6	9	5	(83%)	2	(22%)	11
WYNDHAM	26	11	11	15	(136%)	15	(136%)	16
YARRA	15	9	15	6	(67%)	0	(0%)	12
YARRA RANGES	36	29	25	7	(24%)	11	(44%)	33

Note: excludes rejected claims and claims for interstate crashes

## Claims involving an acute hospital admission: 12 months to April (claim acceptance date)

Category	2012	2011	2010	2012 v 2011	2012 v 2010	5 Year Av
<b>Overview</b>						
Claims	5,894	5,601	5,344	293 (5%)	550 (10%)	5,571
<b>Sex</b>						
Male	3,387	3,236	3,108	151 (5%)	279 (9%)	3,236
Female	2,506	2,364	2,233	142 (6%)	273 (12%)	2,334
<b>Roaduser</b>						
Bicyclist	373	338	309	35 (10%)	64 (21%)	309
Driver	2,717	2,541	2,363	176 (7%)	354 (15%)	2,463
Motorcyclist	976	951	989	25 (3%)	-13 (-1%)	939
Passenger	1,060	1,065	1,035	-5 (-0%)	25 (2%)	1,106
Pedestrian	652	648	571	4 (1%)	81 (14%)	590
Tram/train	23	27	16	-4 (-15%)	7 (44%)	15
<b>Location</b>						
Melbourne	3,990	3,791	3,459	199 (5%)	531 (15%)	3,673
Rural Victoria	1,830	1,784	1,789	46 (3%)	41 (2%)	1,720
<b>Agegroup</b>						
0-4	51	51	49	0 (0%)	2 (4%)	50
5-15	190	188	226	2 (1%)	-36 (-16%)	222
16-17	124	133	143	-9 (-7%)	-19 (-13%)	160
18-20	566	546	565	20 (4%)	1 (0%)	587
21-25	773	672	677	101 (15%)	96 (14%)	716
26-29	436	452	408	-16 (-4%)	28 (7%)	431
30-39	910	864	917	46 (5%)	-7 (-1%)	937
40-49	879	853	770	26 (3%)	109 (14%)	821
50-59	718	689	626	29 (4%)	92 (15%)	634
60-69	533	496	369	37 (7%)	164 (44%)	426
70+	714	657	594	57 (9%)	120 (20%)	588
<b>Alctime</b>						
High (Melb)	1,841	1,702	1,614	139 (8%)	227 (14%)	1,681
High (Rural)	783	801	824	-18 (-2%)	-41 (-5%)	752
High (Vic)	2,624	2,503	2,438	121 (5%)	186 (8%)	2,432
Low (Melb)	2,149	2,089	1,845	60 (3%)	304 (16%)	1,993
Low (Rural)	1,047	983	965	64 (7%)	82 (8%)	968
Low (Vic)	3,196	3,072	2,810	124 (4%)	386 (14%)	2,961
<b>Accident Type</b>						
<b>Intersection</b>						
Adjacent direction	937	829	815	108 (13%)	122 (15%)	845
Opposing direction	478	453	433	25 (6%)	45 (10%)	442
<b>Mid-block/other</b>						
Head on	321	352	285	-31 (-9%)	36 (13%)	322
Same direction	948	922	774	26 (3%)	174 (22%)	794
Manoeuvre/o'taking	295	346	313	-51 (-15%)	-18 (-6%)	314
On path	218	201	224	17 (8%)	-6 (-3%)	198
Single vehicle	1,622	1,602	1,656	20 (1%)	-34 (-2%)	1,655
Other (incl peds)	1,075	896	843	179 (20%)	232 (28%)	820

Note: excludes rejected claims and claims for interstate crashes

## Claims involving an acute hospital admission: 12 months to April (claim acceptance date) - Continued

Category	2012	2011	2010	2012 v 2011		2012 v 2010		5 Year Av
<b>Police Service Area (based on Local Government Area (see p.13))</b>								
BALLARAT	106	98	78	8	(8%)	28	(36%)	81
BANYULE	64	56	61	8	(14%)	3	(5%)	63
BASS COAST	95	71	76	24	(34%)	19	(25%)	82
BAW BAW	73	46	45	27	(59%)	28	(62%)	47
BENALLA	98	102	112	-4	(-4%)	-14	(-13%)	101
BENDIGO	112	99	71	13	(13%)	41	(58%)	79
BOROONDARA	135	145	142	-10	(-7%)	-7	(-5%)	138
BRIMBANK	183	123	106	60	(49%)	77	(73%)	139
CAMPASPE	42	34	45	8	(24%)	-3	(-7%)	39
CARDINIA	88	107	80	-19	(-18%)	8	(10%)	87
CASEY	241	227	242	14	(6%)	-1	(-0%)	228
CENTRAL GOLDFIELDS	8	6	9	2	(33%)	-1	(-11%)	12
DAREBIN	87	116	109	-29	(-25%)	-22	(-20%)	109
EAST GIPPSLAND	65	60	54	5	(8%)	11	(20%)	53
FRANKSTON	142	153	132	-11	(-7%)	10	(8%)	133
GEELONG	246	228	224	18	(8%)	22	(10%)	229
GLEN EIRA	182	175	154	7	(4%)	28	(18%)	160
GREATER DANDENONG	204	208	162	-4	(-2%)	42	(26%)	177
HOBSONS BAY	66	71	53	-5	(-7%)	13	(25%)	67
HORSHAM	41	37	30	4	(11%)	11	(37%)	31
HUME	152	146	149	6	(4%)	3	(2%)	155
KINGSTON	131	126	145	5	(4%)	-14	(-10%)	133
KNOX	117	134	106	-17	(-13%)	11	(10%)	128
LA TROBE	65	76	51	-11	(-14%)	14	(27%)	60
MACEDON RANGES	67	91	93	-24	(-26%)	-26	(-28%)	78
MANNINGHAM	70	64	64	6	(9%)	6	(9%)	71
MARIBYRNONG	112	62	74	50	(81%)	38	(51%)	71
MAROONDAH	72	70	69	2	(3%)	3	(4%)	69
MELBOURNE	233	229	194	4	(2%)	39	(20%)	190
MELTON	83	67	64	16	(24%)	19	(30%)	63
MILDURA	41	36	22	5	(14%)	19	(86%)	32
MITCHELL	78	80	77	-2	(-3%)	1	(1%)	75
MONASH	174	153	159	21	(14%)	15	(9%)	166
MOONEE VALLEY	114	84	85	30	(36%)	29	(34%)	104
MOORABOOL	97	80	113	17	(21%)	-16	(-14%)	92
MORELAND	160	139	118	21	(15%)	42	(36%)	134
MORNINGTON PENINSULA	178	187	134	-9	(-5%)	44	(33%)	168
NILLUMBIK	44	37	28	7	(19%)	16	(57%)	33
NORTHERN GRAMPPIANS	36	30	28	6	(20%)	8	(29%)	36
PORT PHILLIP	125	99	101	26	(26%)	24	(24%)	119
SHEPPARTON	54	64	69	-10	(-16%)	-15	(-22%)	80
SOUTHERN GRAMPPIANS	45	48	39	-3	(-6%)	6	(15%)	39
STONNINGTON	121	140	101	-19	(-14%)	20	(20%)	115
SURF COAST	68	81	74	-13	(-16%)	-6	(-8%)	80
SWAN HILL	24	22	40	2	(9%)	-16	(-40%)	34
WANGARATTA	89	102	126	-13	(-13%)	-37	(-29%)	106
WARRNAMBOOL	97	99	103	-2	(-2%)	-6	(-6%)	80
WELLINGTON	83	72	88	11	(15%)	-5	(-6%)	64
WHITEHORSE	110	146	107	-36	(-25%)	3	(3%)	132
WHITTLESEA	129	123	118	6	(5%)	11	(9%)	116
WODONGA	57	62	60	-5	(-8%)	-3	(-5%)	60
WYNDHAM	159	112	102	47	(42%)	57	(56%)	115
YARRA	116	105	106	11	(10%)	10	(9%)	99
YARRA RANGES	198	187	194	11	(6%)	4	(2%)	196

Note: excludes rejected claims and claims for interstate crashes

## Fatalities: Victorian monthly totals since 1951

Year	Jan	Feb	Mar	Apr	May	Jun	Jul	Aug	Sep	Oct	Nov	Dec	Totals
1951							61	59	52	38	29	41	
1952	45	40	54	61	54	69	67	55	44	44	31	20	584
1953	23	28	54	58	49	42	50	37	44	27	36	32	480
1954	44	42	28	60	55	36	63	33	25	52	30	41	509
1955	44	36	45	55	48	56	64	44	44	32	40	40	548
1956	34	48	51	67	53	65	71	47	39	39	44	48	606
1957	50	41	46	58	52	54	57	53	51	46	32	49	589
1958	50	38	42	58	54	41	54	53	57	40	57	52	596
1959	50	57	61	50	75	55	42	48	52	55	63	63	671
1960	49	53	57	76	70	70	67	62	61	77	52	66	760
1961	63	57	68	74	58	68	78	82	59	62	60	65	794
1962	65	41	76	78	72	80	70	77	62	53	64	70	808
1963	67	56	65	85	66	68	77	55	55	58	61	67	780
1964	73	71	78	71	83	89	80	89	67	66	62	75	904
1965	63	64	86	88	80	87	79	69	81	77	68	87	929
1966	75	59	75	103	74	86	87	80	75	66	90	85	955
1967	61	79	91	97	81	71	59	67	70	68	60	83	887
1968	70	78	86	78	73	76	73	77	72	80	81	105	949
1969	79	68	79	87	86	77	87	83	87	83	94	101	1,011
1970	85	84	106	80	87	88	110	106	78	95	68	74	1,061
1971	83	75	77	68	76	86	85	72	78	73	74	76	923
1972	61	62	75	82	75	71	98	85	83	62	80	81	915
1973	75	75	95	85	64	66	61	85	89	88	66	86	935
1974	56	62	81	60	70	73	67	62	53	70	80	72	806
1975	67	65	87	73	97	94	57	75	69	66	71	89	910
1976	79	78	88	78	69	79	60	70	82	78	77	100	938
1977	65	71	89	79	65	79	70	91	68	74	96	107	954
1978	75	54	95	63	64	69	68	77	65	84	83	72	869
1979	63	60	86	75	45	64	66	75	69	79	72	93	847
1980	48	55	66	59	47	56	60	53	45	58	61	49	657
1981	69	60	58	61	74	65	61	63	68	71	59	57	766
1982	55	53	59	59	67	45	47	71	53	69	65	66	709
1983	42	59	53	63	62	61	65	51	59	43	54	52	664
1984	65	48	58	50	56	48	46	50	71	53	55	58	658
1985	56	47	50	65	75	50	51	50	58	61	56	64	683
1986	56	50	70	69	59	53	42	54	54	52	59	51	669
1987	62	43	57	52	63	59	62	49	62	61	55	80	705
1988	49	58	69	54	79	50	54	52	64	59	43	70	701
1989	76	65	80	59	67	73	52	65	82	50	41	66	776
1990	48	44	55	39	56	64	41	34	48	35	40	44	548
1991	45	39	70	30	34	29	44	47	41	36	35	53	503
1992	34	33	34	47	33	29	23	27	28	38	30	40	396
1993	27	40	37	39	44	33	33	27	34	39	43	40	436
1994	36	31	44	35	27	33	29	37	17	27	32	30	378
1995	38	35	26	33	34	41	27	34	34	32	38	46	418
1996	40	47	35	38	28	29	30	35	49	24	33	30	418
1997	36	25	30	30	40	22	39	26	26	29	39	35	377
1998	29	29	32	36	31	22	40	19	37	36	49	30	390
1999	32	31	35	35	34	24	35	26	28	38	29	37	384
2000	32	26	46	32	39	32	33	29	36	29	44	29	407
2001	44	30	31	32	31	41	34	37	35	51	41	37	444
2002	32	31	45	31	45	32	27	25	31	30	31	37	397
2003	21	41	36	28	31	28	20	23	23	24	24	31	330
2004	32	22	30	30	46	28	27	26	22	28	25	27	343
2005	33	27	47	21	29	23	30	25	25	33	17	36	346
2006	24	37	23	23	27	23	25	22	43	20	31	39	337
2007	23	23	32	25	26	28	28	20	23	37	26	41	332
2008	28	20	37	25	25	20	27	27	18	25	26	25	303
2009	31	18	23	32	19	30	19	21	14	28	21	34	290
2010	26	25	23	20	31	26	26	18	17	36	12	28	288
2011	18	20	34	31	30	24	25	14	12	22	30	27	287
2012	30	21	25	19	23	23	20	27	17	34			235
<b>Ave</b>	<b>50</b>	<b>47</b>	<b>57</b>	<b>55</b>	<b>54</b>	<b>53</b>	<b>52</b>	<b>51</b>	<b>50</b>	<b>51</b>	<b>50</b>	<b>56</b>	<b>631</b>
<b>Max</b>	<b>85</b>	<b>84</b>	<b>106</b>	<b>103</b>	<b>97</b>	<b>94</b>	<b>110</b>	<b>106</b>	<b>89</b>	<b>95</b>	<b>96</b>	<b>107</b>	<b>1,061</b>
<b>Min</b>	<b>18</b>	<b>18</b>	<b>23</b>	<b>19</b>	<b>19</b>	<b>20</b>	<b>19</b>	<b>14</b>	<b>12</b>	<b>20</b>	<b>12</b>	<b>20</b>	<b>287</b>

**Fatalities by Week (2007 to 2012)**

Week Ending	2007	2008	2009	2010	2011	2012	Cumulative 2012	% Change 2012-2011	12 Month Moving Total
1-Jan	3	1	3	1	2	1	1	-50%	286
8-Jan	2	8	11	6	1	3	4	33%	288
15-Jan	7	5	6	1	6	9	13	44%	291
22-Jan	5	4	2	9	4	7	20	54%	294
29-Jan	5	8	8	6	4	9	29	71%	299
5-Feb	7	5	1	9	8	4	33	32%	295
12-Feb	4	4	10	5	3	2	35	25%	294
19-Feb	10	4	3	8	5	10	45	36%	299
26-Feb	3	8	5	4	4	4	49	32%	299
4-Mar	9	8	2	6	8	1	50	11%	292
11-Mar	9	5	6	5	6	4	54	6%	290
18-Mar	3	13	3	4	9	12	66	10%	293
25-Mar	8	7	7	8	8	4	70	3%	289
1-Apr	4	10	8	5	5	7	77	5%	291
8-Apr	11	3	5	4	12	6	83	-2%	285
15-Apr	4	6	8	6	5	2	85	-6%	282
22-Apr	3	6	10	4	6	6	91	-5%	282
29-Apr	7	5	6	4	7	2	93	-10%	277
6-May	3	7	7	3	4	10	103	-4%	283
13-May	6	4	4	9	7	2	105	-8%	278
20-May	8	8	1	6	11	5	110	-12%	272
27-May	6	6	3	12	4	5	115	-11%	273
3-Jun	15	2	7	2	5	4	119	-11%	272
10-Jun	3	6	6	7	9	6	125	-13%	269
17-Jun	4	4	8	8	3	4	129	-12%	270
24-Jun	7	7	6	5	6	7	136	-11%	271
1-Jul	2	5	7	8	5	4	140	-11%	270
8-Jul	9	10	9	4	10	3	143	-14%	263
15-Jul	7	2	2	3	5	4	147	-15%	262
22-Jul	6	3	5	5	8	5	152	-16%	259
29-Jul	5	8	3	10	2	6	158	-13%	263
5-Aug	2	8	3	7	4	2	160	-14%	261
12-Aug	2	6	11	3	6	5	165	-14%	260
19-Aug	4	3	4	5	1	5	170	-12%	264
26-Aug	11	7	1	2	1	10	180	-7%	273
2-Sep	3	5	4	3	3	5	185	-6%	275
9-Sep	7	3	1	4	3	4	189	-6%	276
16-Sep	4	6	7	1	3	6	195	-4%	279
23-Sep	8	6	2	6	1	4	199	-2%	282
30-Sep	5	6	2	4	5	2	201	-4%	279
7-Oct	12	8	2	12	7	9	210	-3%	281
14-Oct	6	4	8	7	2	9	219	0%	288
21-Oct	8	4	9	8	3	8	227	3%	293
28-Oct	6	4	8	6	7	5	232	2%	291
4-Nov	6	4	4	5	5	5	237	2%	291
11-Nov	7	7	6	0	12	7	244	0%	286
18-Nov	4	10	6	3	8	7	251	-1%	285
25-Nov	7	3	4	3	5	3	254	-2%	283
2-Dec	8	4	5	7	7				
9-Dec	16	9	5	6	6				
16-Dec	5	3	11	6	7				
23-Dec	8	9	10	9	6				
31-Dec	8	2	5	4	3				
<b>Total</b>	<b>332</b>	<b>303</b>	<b>290</b>	<b>288</b>	<b>287</b>				

## Alcohol Related Fatalities

### NOTE: UPDATES TO THIS DATA WERE NOT AVAILABLE AT TIME OF REPORT

- 24% of fatally injured and tested drivers and riders had a BAC at 0.05 g/100ml or over (41 of 172) compared to 25% over the previous 12 month period (43 of 169).
- In Melbourne, 21 drivers/riders fatally injured and tested were at or over 0.05, with 38% of these having a BAC in excess of 0.15 g/100ml. Across rural Victoria, 20 drivers/riders fatally injured and tested were at or over 0.05, with 65% of these having a BAC over 0.15.
- Of the 41 drivers and riders fatally injured and tested at or over 0.05, 15% (6) were aged under 21, 39% (16) were aged 21-29, 27% (11) were aged 30-39 and 20% (8) were aged 40 years and over. In the previous year (43 fatally injured) the corresponding figures were 19% (8), 28% (12), 19% (8) and 35% (15), respectively.

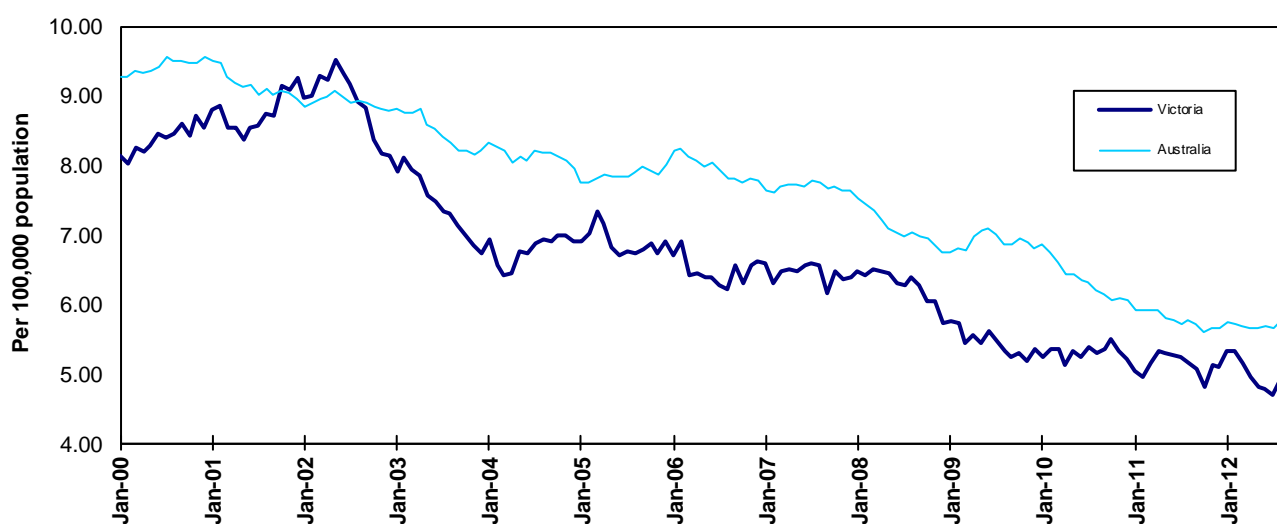
### BAC Fatalities (12 months to April 2010)

Category	2010	2009	2008	2010 v 2009		2010 v 2008		5 Year Av
<b>Melbourne Drivers and Riders</b>								
<0.05	55	63	63	-8	(-13%)	-8	(-13%)	62
[a] at 0.05 & above	21	17	25	4	(24%)	-4	(-16%)	21
% at 0.05 & above	(28%)	(21%)	(28%)					(25%)
[b] >0.15	8	10	12	-2	(-20%)	-4	(-33%)	9
%>0.15	(11%)	(13%)	(14%)					(11%)
[b] as a % of [a]	(38%)	(59%)	(48%)					(43%)
BAC Unknown	5	3	1	2	(67%)	4	(400%)	3
<b>Country Drivers and Riders</b>								
<0.05	76	63	90	13	(21%)	-14	(-16%)	78
[a] at 0.05 & above	20	26	32	-6	(-23%)	-12	(-38%)	26
% at 0.05 & above	(21%)	(29%)	(26%)					(25%)
[b] >0.15	13	17	20	-4	(-24%)	-7	(-35%)	17
%>0.15	(14%)	(19%)	(16%)					(16%)
[b] as a % of [a]	(65%)	(65%)	(63%)					(64%)
BAC Unknown	7	2	1	5	(250%)	6	(600%)	5
<b>Victorian Total Drivers and Riders</b>								
<0.05	131	126	153	5	(4%)	-22	(-14%)	140
[a] at 0.05 & above	41	43	57	-2	(-5%)	-16	(-28%)	47
% at 0.05 & above	(24%)	(25%)	(27%)					(25%)
[b] >0.15	21	27	32	-6	(-22%)	-11	(-34%)	26
%>0.15	(12%)	(16%)	(15%)					(14%)
[b] as a % of [a]	(51%)	(63%)	(56%)					(54%)
BAC Unknown	12	5	2	7	(140%)	10	(500%)	7
<b>Victorian Total Pedestrians</b>								
<0.05	32	35	38	-3	(-9%)	-6	(-16%)	33
[a] at 0.05 & above	8	21	9	-13	(-62%)	-1	(-11%)	14
% at 0.05 & above	(20%)	(38%)	(19%)					(30%)
[b] >0.15	3	10	8	-7	(-70%)	-5	(-63%)	9
%>0.15	(8%)	(18%)	(17%)					(19%)
[b] as a % of [a]	(38%)	(48%)	(89%)					(62%)
BAC Unknown	6	4	2	2	(50%)	4	(200%)	4

## The National Picture

State	Fatalities (12 months to September)				2012 v 2011	
	2012	2011	2010	2009		
NSW	403	364	414	448	39	(11%)
VIC	284	284	295	283	0	(0%)
QLD	283	262	245	347	21	(8%)
SA	92	115	110	120	-23	(-20%)
WA	183	189	203	182	-6	(-3%)
TAS	29	26	34	63	3	(12%)
NT	54	41	46	40	13	(32%)
ACT	8	7	20	11	1	(14%)
AUST TOTAL	1,336	1,288	1,367	1,494	48	(4%)
AUST minus VIC	1,052	1,004	1,072	1,211	48	(5%)

State	Fatalities per 10,000 registered vehicles (12 months to September)			Fatalities per 100,000 population (12 months to September)		
	2012	2011	2010	2012	2011	2010
NSW	0.82	0.76	0.88	5.48	4.99	5.75
VIC	0.66	0.67	0.72	5.00	5.07	5.35
QLD	0.81	0.77	0.73	6.11	5.74	5.46
SA	0.72	0.91	0.89	5.52	6.95	6.71
WA	0.92	0.98	1.09	7.68	8.10	8.90
TAS	0.67	0.62	0.83	5.66	5.10	6.71
NT	3.81	2.98	3.41	23.42	17.82	20.13
ACT	0.30	0.27	0.79	2.28	1.97	5.60
AUST TOTAL	0.80	0.78	0.85	5.85	5.71	6.15
AUST minus VIC	0.84	0.82	0.90	6.10	5.89	6.42



Victoria v Australia - 12 Month Moving Fatality Rate

### Booze-Bus Random Breath Testing\*

12 months to September 2012 (monthly totals)

	2011			2012								
	Oct	Nov	Dec	Jan	Feb	Mar	Apr	May	Jun	Jul	Aug	Sep
Melbourne				86,442	83,625	87,082	89,651	91,052	79,523	77,942	80,396	97,391
Country				9,042	10,529	12,033	7,426	7,767	7,285	4,486	7,077	4,599
Vic Total				95,484	94,154	99,115	97,077	98,819	86,808	82,428	87,473	101,990

12 months to June 2012 vs previous 12 months

	2012	2011	2010	2012 v 2011	2011 v 2009
Melbourne	1,033,696	924,897	1,059,308	108,799 (12%)	-25,612 (-2%)
Country	119,149	160,608	198,830	-41,459 (-26%)	-79,681 (-40%)
Vic Total	1,152,845	1,085,505	1,258,138	67,340 (6%)	-105,293 (-8%)

\*Due to police industrial action, reliable random breath testing data is not available from May to October 2011. For the rolling 12 month totals, 2010 data has been used as a substitute in the relevant months.

### Mobile Safety Camera Data

Speed Infringements Issued from Mobile Cameras (monthly totals)

Monthly Average = 47,481

	2011			2012								
	Oct	Nov	Dec	Jan	Feb	Mar	Apr	May	Jun	Jul	Aug	Sep
	13,049	88,160	44,408	54,857	43,904	50,948	42,935	50,292	45,729	48,023	45,032	42,429

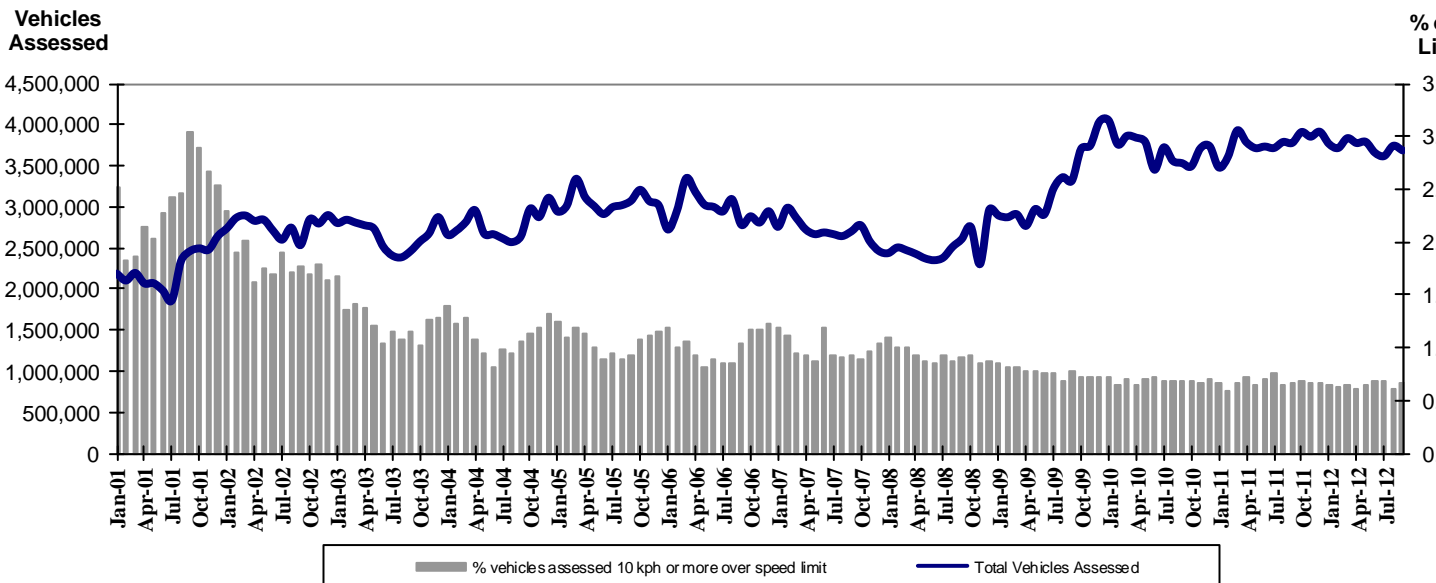
Excessive Speed Infringements Issued from Mobile Cameras (monthly totals)

Monthly Average = 391

	2011			2012								
	Oct	Nov	Dec	Jan	Feb	Mar	Apr	May	Jun	Jul	Aug	Sep
	176	658	450	487	340	435	374	360	341	352	368	353

Notes: An ESI is defined as 25km/h over the speed limit except in a 110km/h zone where it is 20km/h over the limit.

Note that the Victoria Police Traffic Camera Office was not approving infringements during police industrial action between 30th September and 24th of October. This resulted in a backlog of infringements which were subsequently processed in November. The issuing of "on-the-spot" fine numbers also dropped during the industrial action.



Mobile Safety Cameras – Vehicles assessed and percentage of vehicles assessed 10km/h or more over speed limit per month



## Explanations and References

Hi-AlcTime is those times of the day and week (*shaded* in the table below) when casualty crashes are ten times more likely to involve alcohol than casualty crashes at other (Lo-AlcTime) times.

	12am - 6am	6am - 8am	8am - 10am	10am - 2pm	2pm - 4pm	4pm - 6pm	6pm - 12pm
Monday							
Tuesday							
Wednesday							
Thursday							
Friday							
Saturday							
Sunday							

Police Service Areas align with Local Government Areas. Most Police Service Areas are equivalent to a single Local Government Area, while the remainder comprise two or three Local Government Areas.

Police Service Area	Local Government Area(s)	Police Service Area	Local Government Area(s)
BALLARAT	BALLARAT, PYRENEES	MAROONDAH	MAROONDAH
BANYULE	BANYULE	MELBOURNE	MELBOURNE
BASS COAST	BASS COAST, SOUTH GIPPSLAND	MELTON	MELTON
BAW BAW	BAWBAW	MILDURA	MILDURA
BENALLA	BENALLA, MANSFIELD, MURRINDINDI	MITCHELL	MITCHELL, STRATHBOGIE
BENDIGO	GREATER BENDIGO	MONASH	MONASH
BOROONDARA	BOROONDARA	MOONEE VALLEY	MOONEE VALLEY
BRIMBANK	BRIMBANK	MOORABOOL	GOLDEN PLAINS, HEPBURN, MOORABOOL
CAMPASPE	CAMPASPE	MORELAND	MORELAND
CARDINIA	CARDINIA	MORNINGTON PENINSULA	MORNINGTON PENINSULA
CASEY	CASEY	NILLUMBIK	NILLUMBIK
CENTRAL GOLDFIELDS	CENTRAL GOLDFIELDS, LODDON	NORTHERN GRAMPIANS	ARARAT, NORTHERN GRAMPIANS, YARRIAMIACK
GREATER DANDENONG	GREATER DANDENONG	PORT PHILLIP	PORT PHILLIP
DAREBIN	DAREBIN	SHEPPARTON	GREATER SHEPPARTON
EAST GIPPSLAND	EAST GIPPSLAND	SOUTHERN GRAMPIANS	GLENELG, SOUTHERN GRAMPIANS
FRANKSTON	FRANKSTON	STONNINGTON	STONNINGTON
GEELONG	GREATER GEELONG, QUEENSCLIFF	SURFCOAST	SURFCOAST, COLAC OTWAY
GLENEIRA	GLENEIRA, BAYSIDE	SWANHILL	BULOKE, GANNAWARRA, SWAN HILL
HOBSONS BAY	HOBSONSBAY	WANGARATTA	ALPINE, MOIRA, WANGARATTA
HORSHAM	HINDMARSH, HORSHAM, WESTWIMMERA	WARRNAMBOOL	CORANGAMITE, MOYNE, WARRNAMBOOL
HUME	HUME	WELLINGTON	WELLINGTON
KINGSTON	KINGSTON	WHITEHORSE	WHITEHORSE
KNOX	KNOX	WHITTLESEA	WHITTLESEA
LATROBE	LATROBE	WODONGA	INDIGO, TOWONG, WODONGA
MACEDON RANGES	MOUNT ALEXANDER, MACEDON RANGES	WYNDHAM	WYNDHAM
MANNINGHAM	MANNINGHAM	YARRA	YARRA
MARIBYRNONG	MARIBYRNONG	YARRA RANGES	YARRA RANGES

## Useful Internet Sites

### TAC Sites

- TAC Safety (Road Safety) [www.tacsafety.com.au](http://www.tacsafety.com.au)
- TAC How safe is your car [www.howsafeisyourcar.com.au](http://www.howsafeisyourcar.com.au)
- TAC Learners Log [www.learnerslog.com.au](http://www.learnerslog.com.au)
- TAC Motorcycle Safety Website [www.spokes.com.au](http://www.spokes.com.au)
- TAC Corporate site [www.tac.vic.gov.au](http://www.tac.vic.gov.au)

### Victorian Sites:

- VicRoads [www.vicroads.vic.gov.au](http://www.vicroads.vic.gov.au)
- Victoria Police [www.police.vic.gov.au](http://www.police.vic.gov.au)
- Parliamentary Road Safety Committee [www.parliament.vic.gov.au/rsc/](http://www.parliament.vic.gov.au/rsc/)
- ARRB Transport Research [www.arrb.com.au](http://www.arrb.com.au)
- RACV [www.racv.com.au](http://www.racv.com.au)
- Monash University Accident Research Centre [www.monash.edu.au/muarc](http://www.monash.edu.au/muarc)
- Roadsafe [www.roadsafe.org.au](http://www.roadsafe.org.au)
- Cameras Save Lives [www.camerassavelives.vic.gov.au](http://www.camerassavelives.vic.gov.au)

### National and Interstate Sites:

- Australian Transport Safety Bureau [www.atsb.gov.au](http://www.atsb.gov.au)
- Roads and Traffic Authority (NSW) [www.rta.nsw.gov.au](http://www.rta.nsw.gov.au)
- Queensland Transport - Road Safety [transport.qld.gov.au/Home/Safety/Road](http://transport.qld.gov.au/Home/Safety/Road)
- Department of Transport (SA) [www.transport.sa.gov.au/index.htm](http://www.transport.sa.gov.au/index.htm)
- Main Roads Western Australia - Road Safety [www.mrwa.wa.gov.au](http://www.mrwa.wa.gov.au)

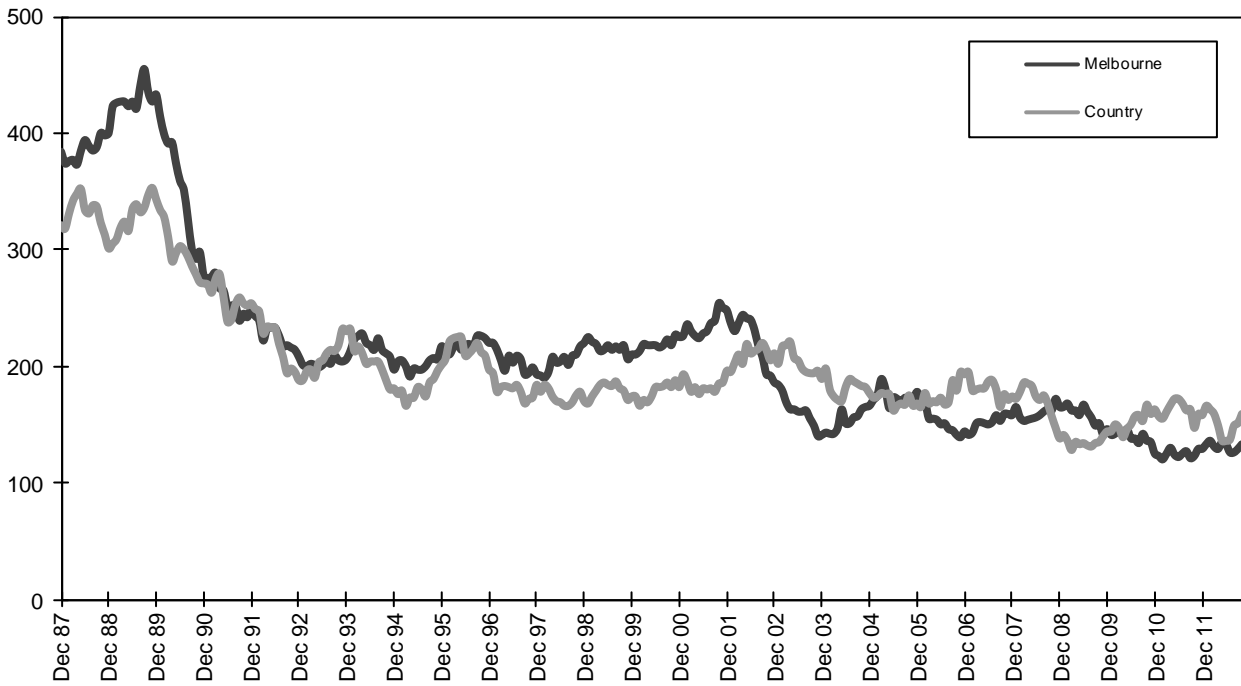
### International Sites:

- National Highway Traffic Safety Admin (USA) [www.nhtsa.dot.gov](http://www.nhtsa.dot.gov)
- Swedish Road and Transport Institute (VTI) [www.vti.se](http://www.vti.se)
- SWOV Institute for Road Safety Research [www.swov.nl](http://www.swov.nl)

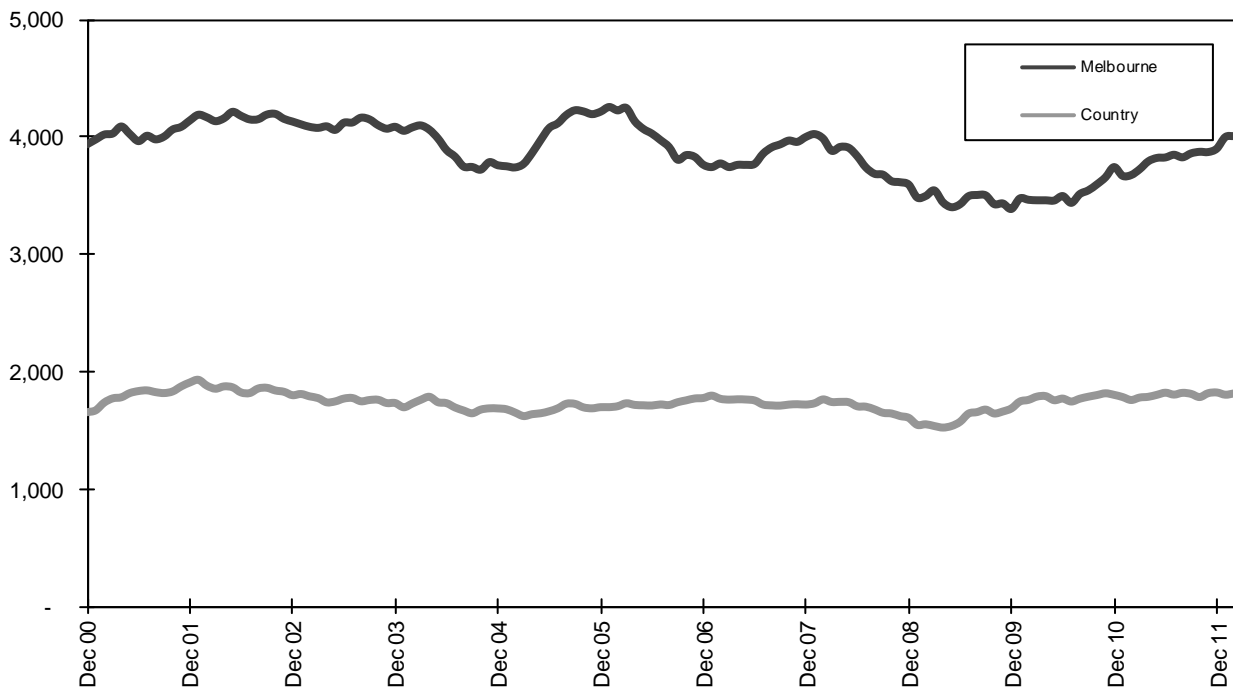
### Related Sites:

- Australian Drug Foundation [www.adf.org.au](http://www.adf.org.au)
- Amy Gillett Foundation [www.amygillett.org.au](http://www.amygillett.org.au)

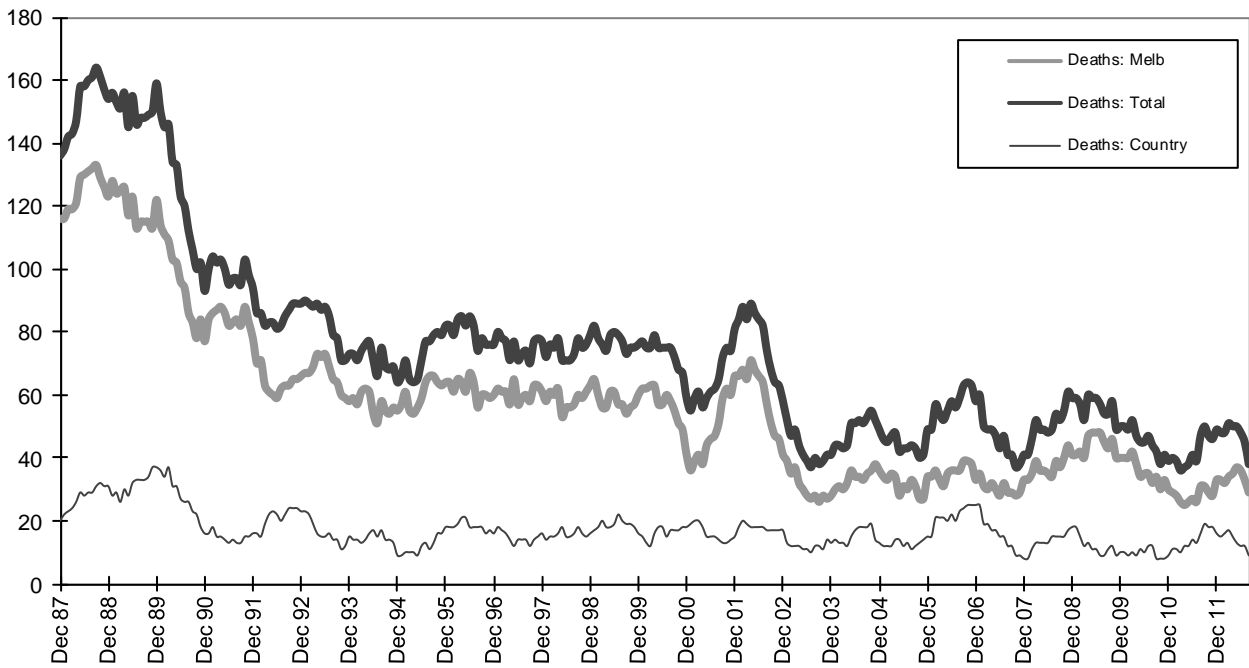
Figures



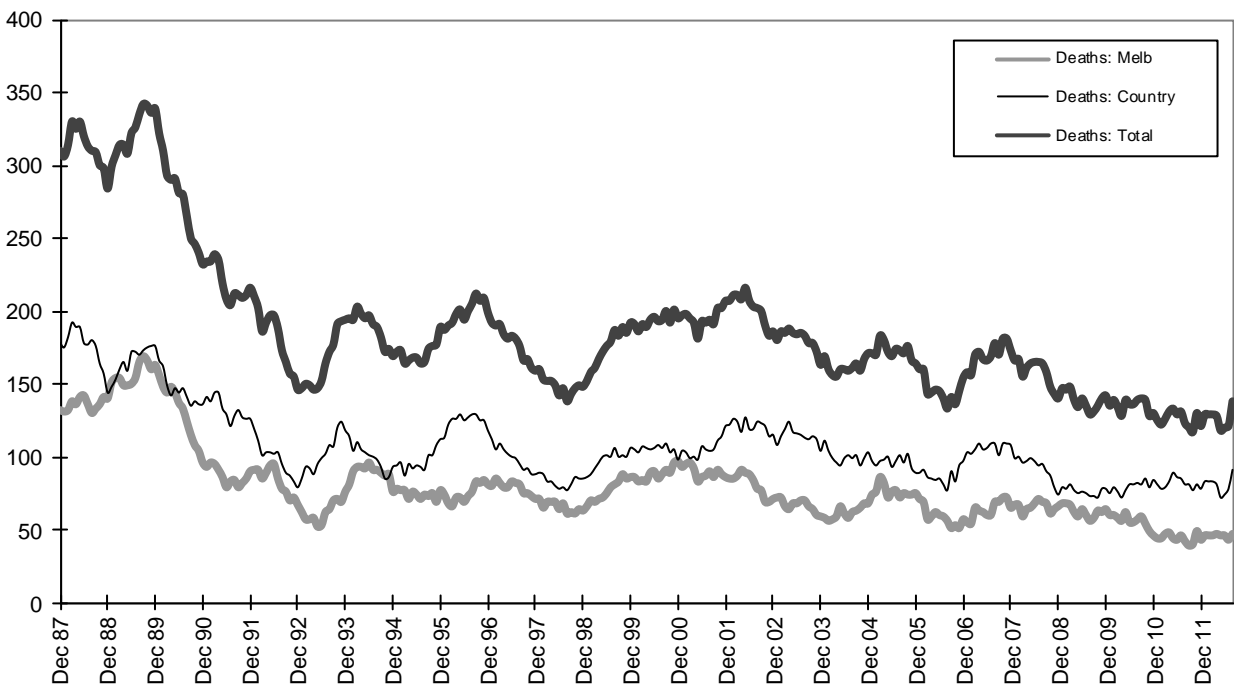
Graph 1a - Melbourne/country fatalities



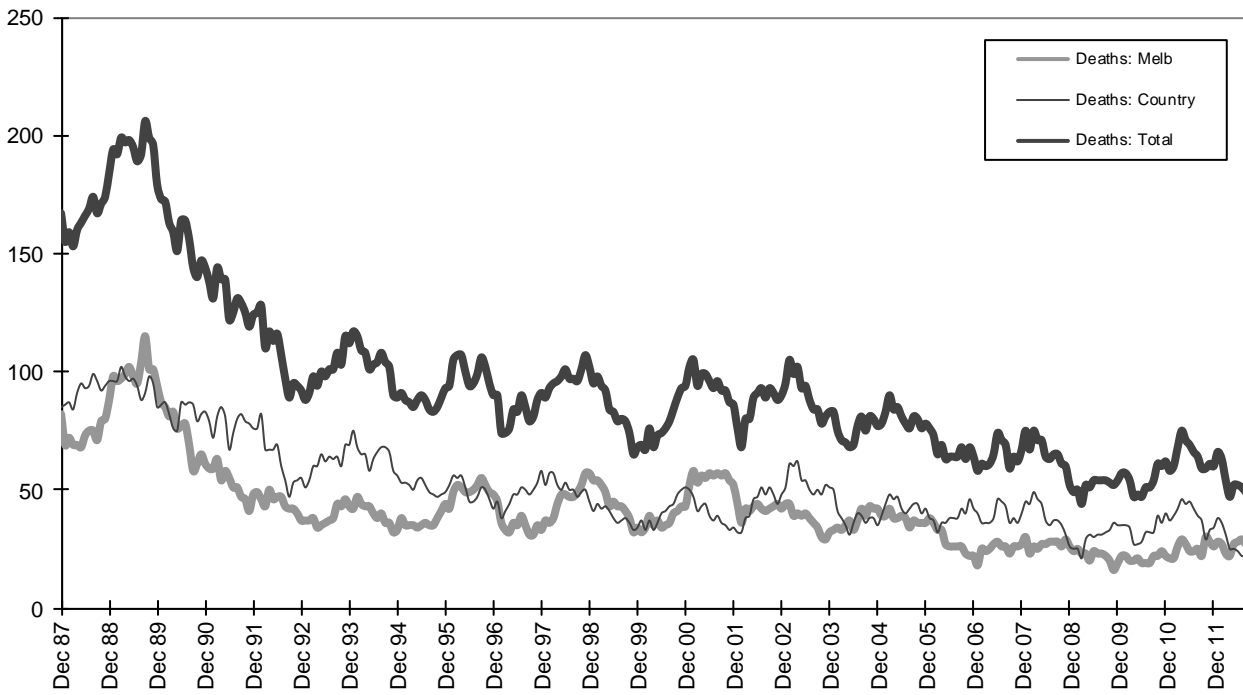
Graph 1b - Melbourne/country Claims involving an acute hospital admission



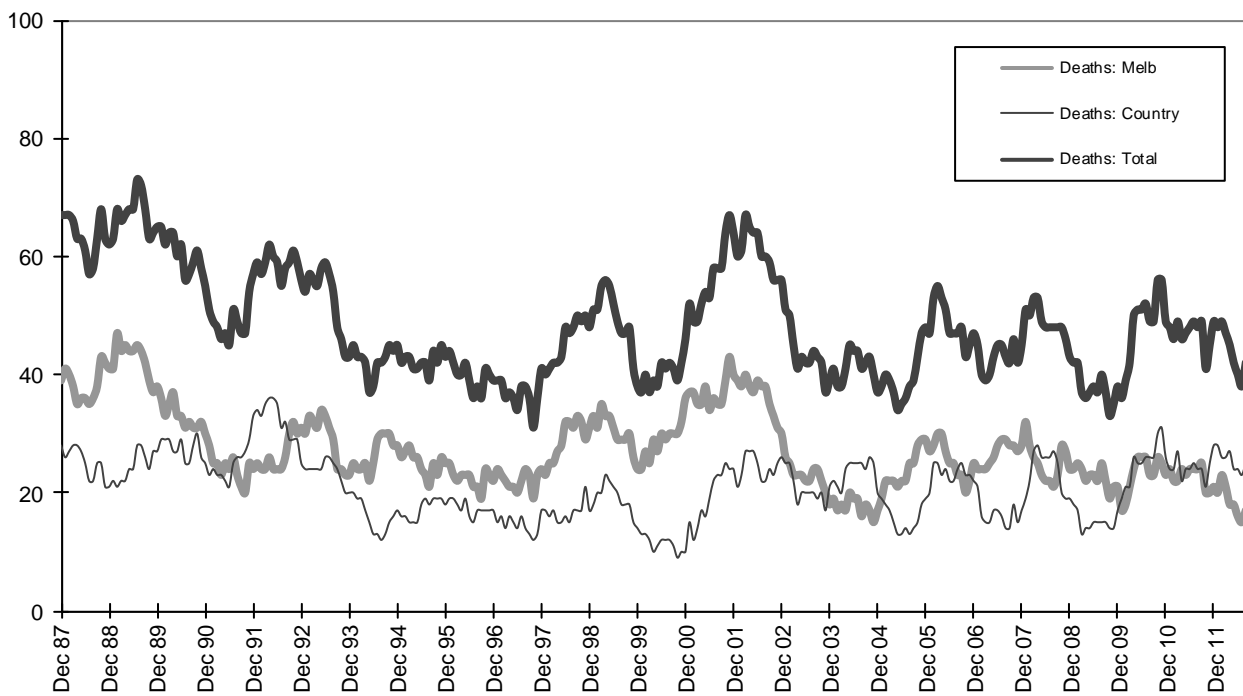
Graph 2a - Pedestrian fatalities (Melbourne/country)



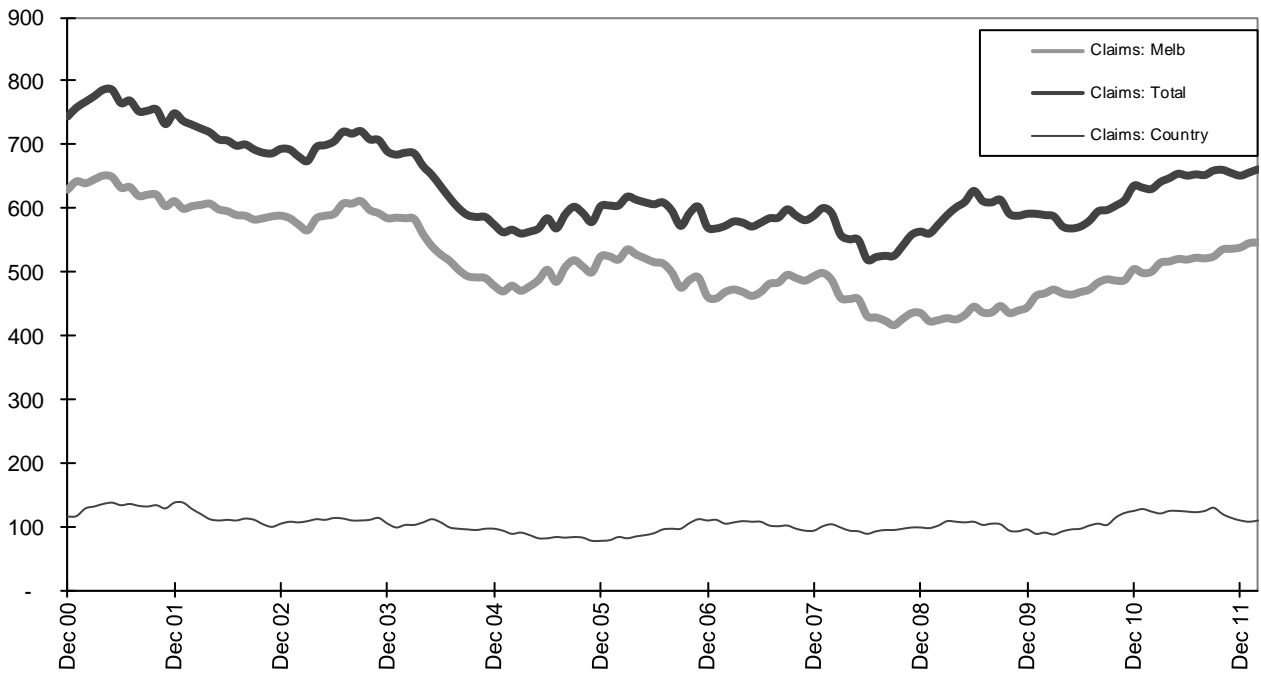
Graph 2b - Driver fatalities (Melbourne/country)



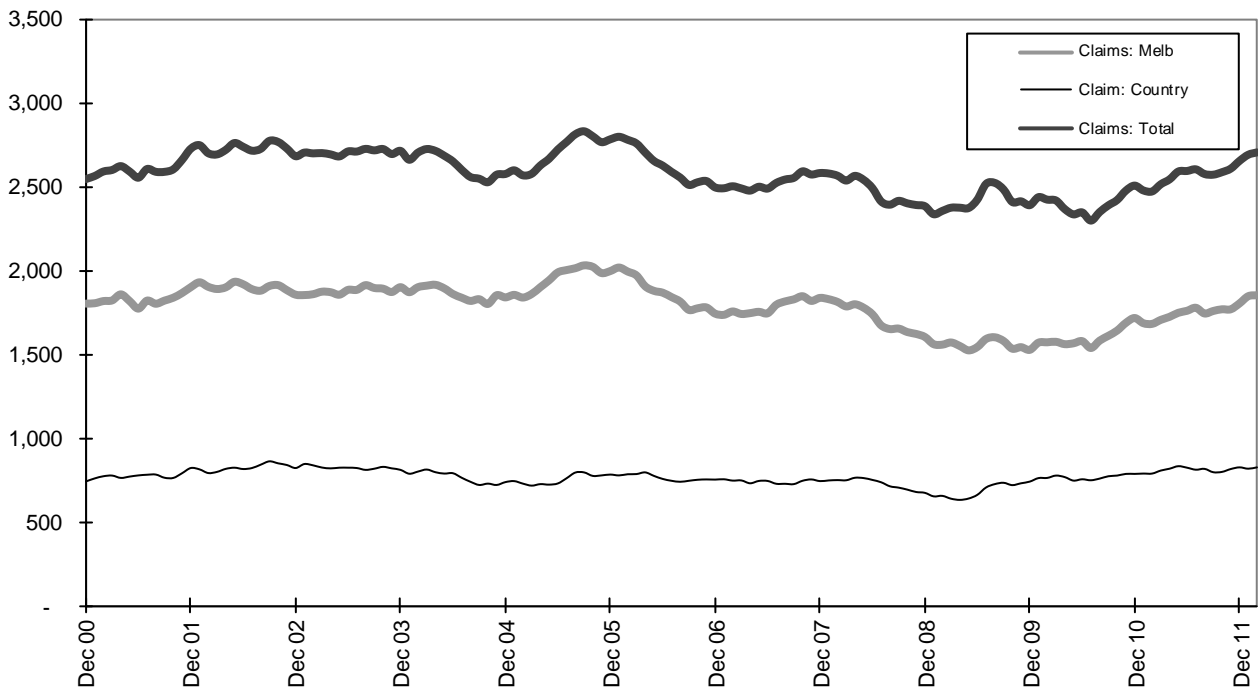
Graph 2c - Passenger fatalities (Melbourne/country)



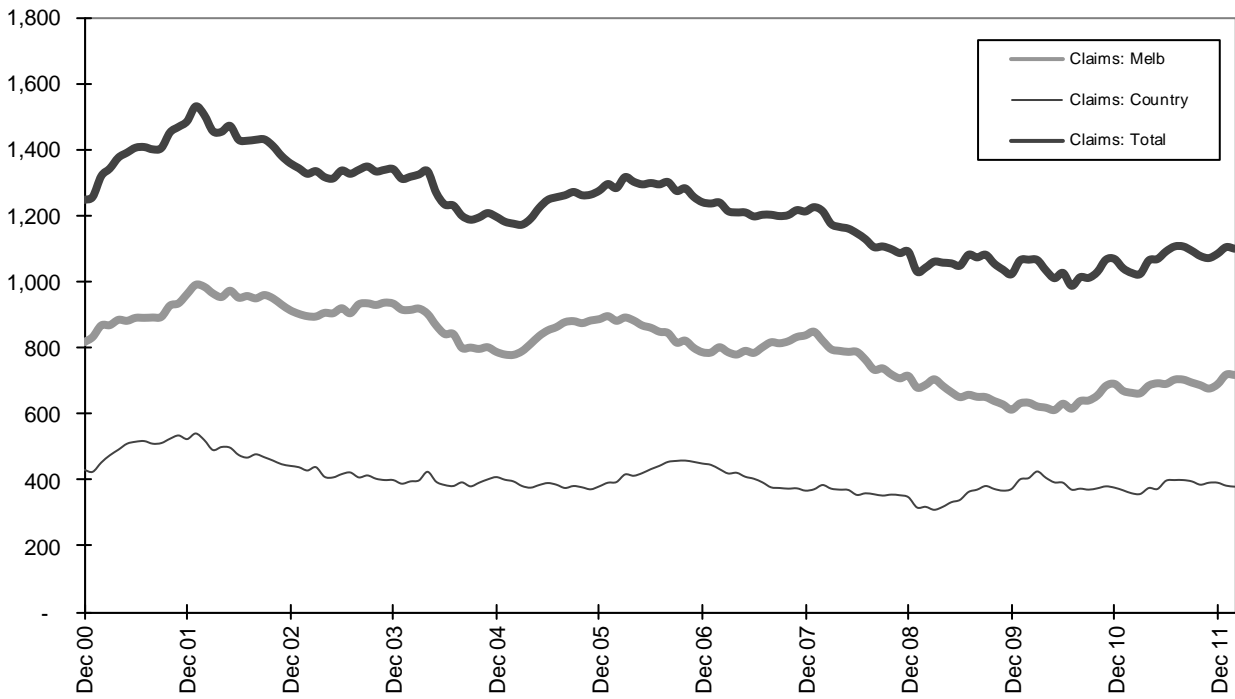
Graph 2d - Motorcyclist fatalities (Melbourne/country)



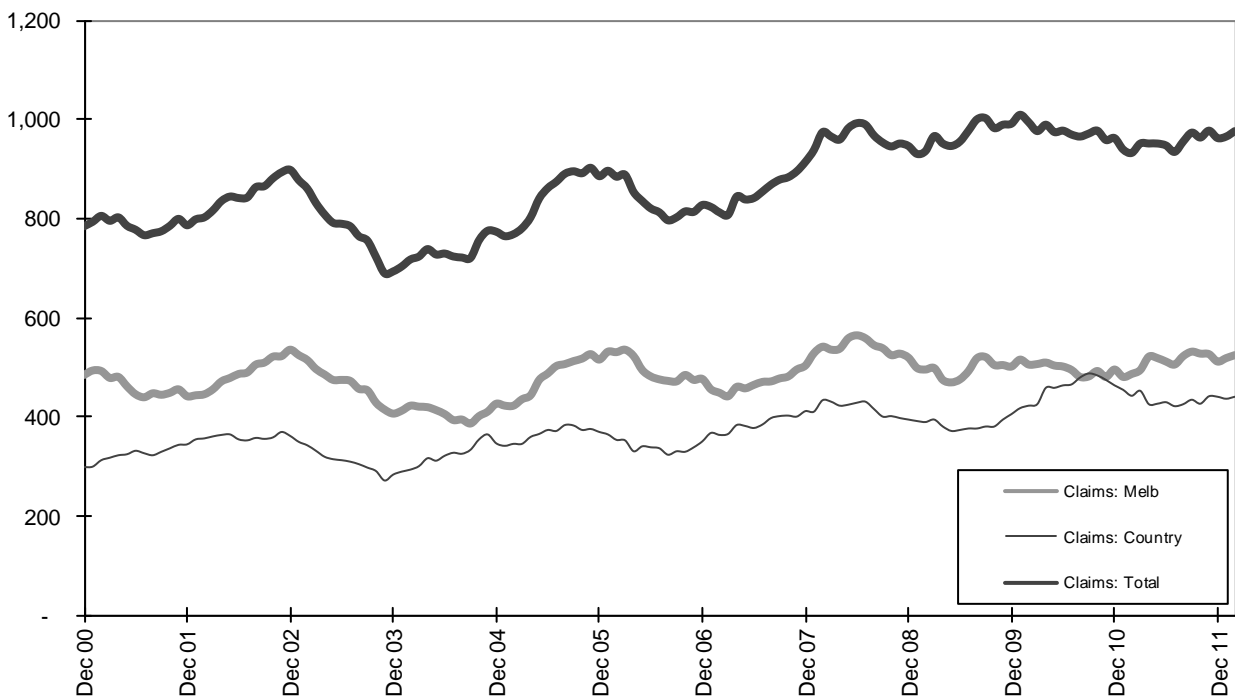
Graph 3a - Pedestrian Claims involving an acute hospital admission (Melbourne/country)



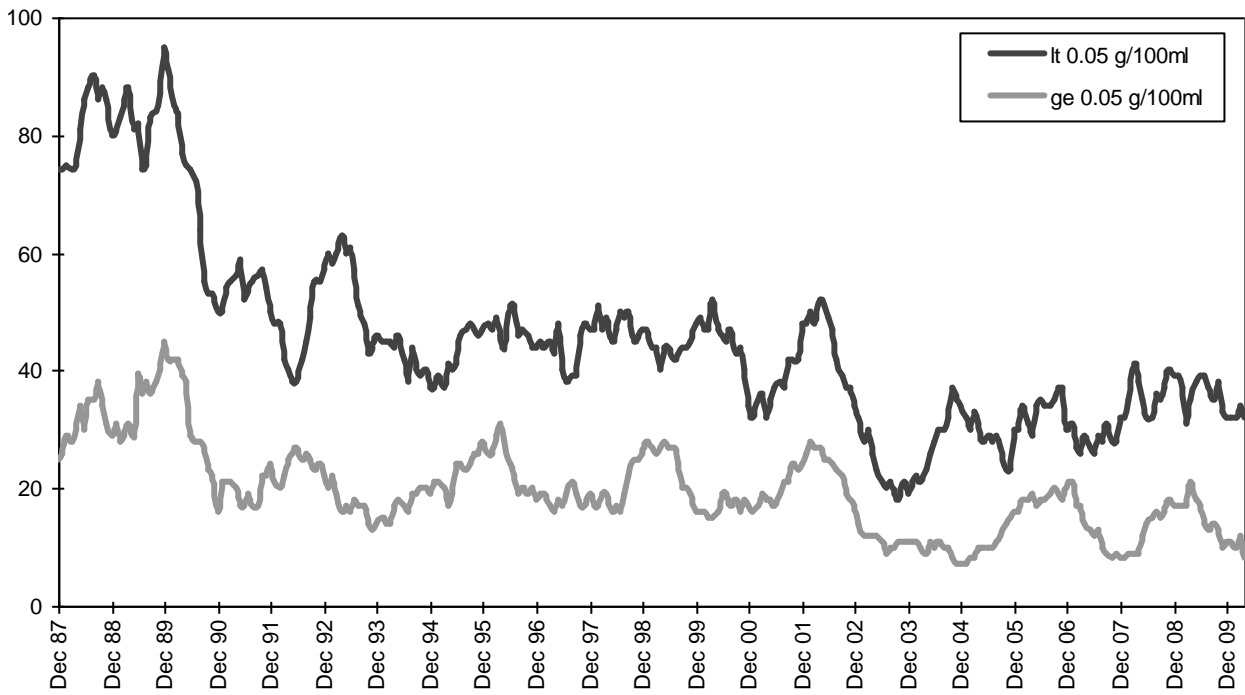
Graph 3b - Driver Claims involving an acute hospital admission (Melbourne/country)



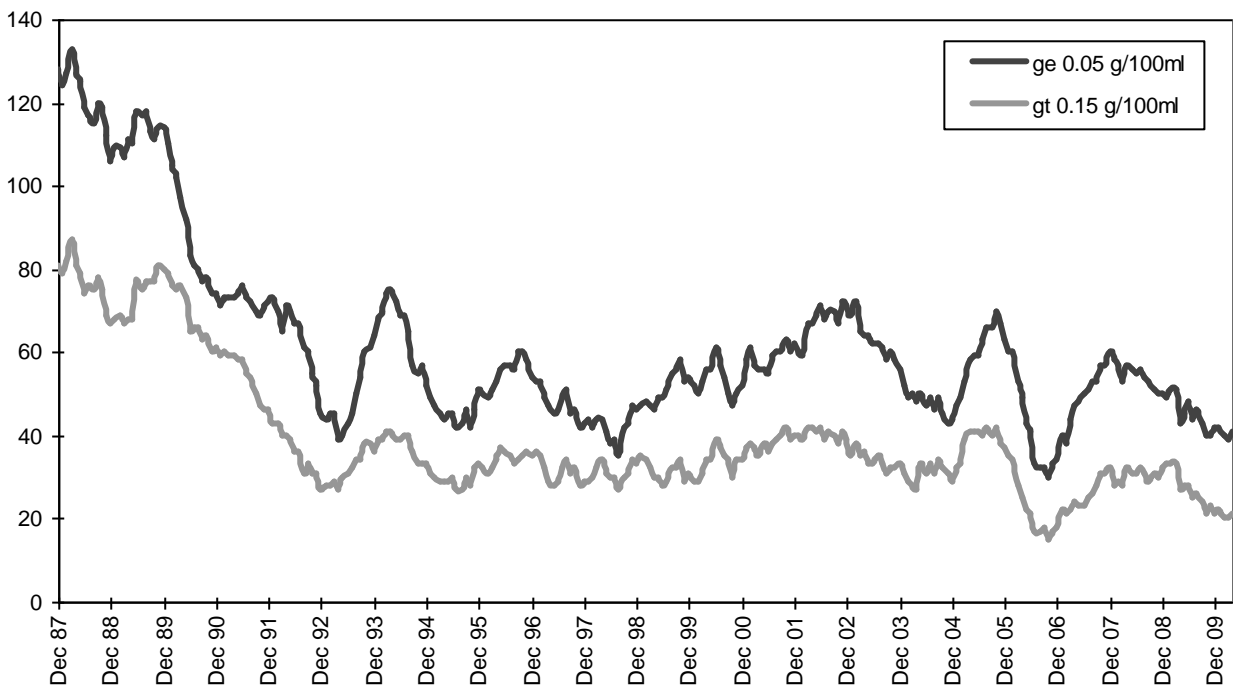
Graph 3c - Passenger Claims involving an acute hospital admission (Melbourne/country)



Graph 3d - Motorcyclist Claims involving an acute hospital admission (Melbourne/country)

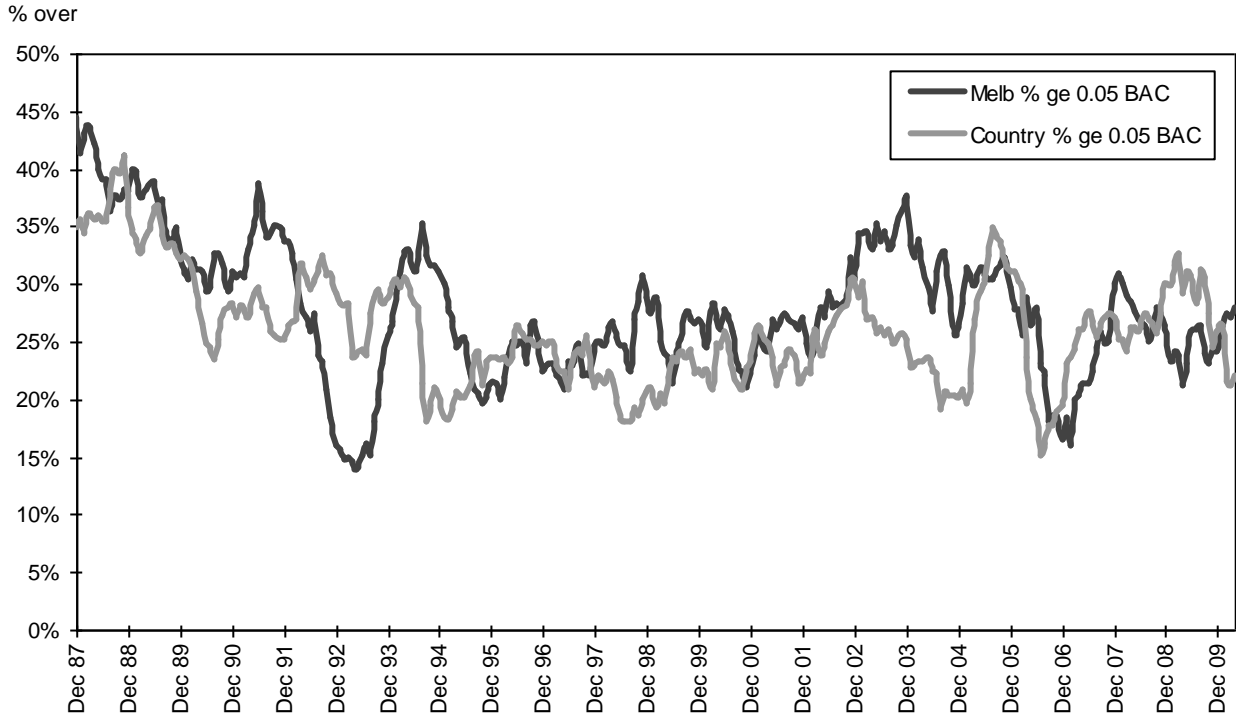


Graph 4a - Pedestrian fatalities by BAC

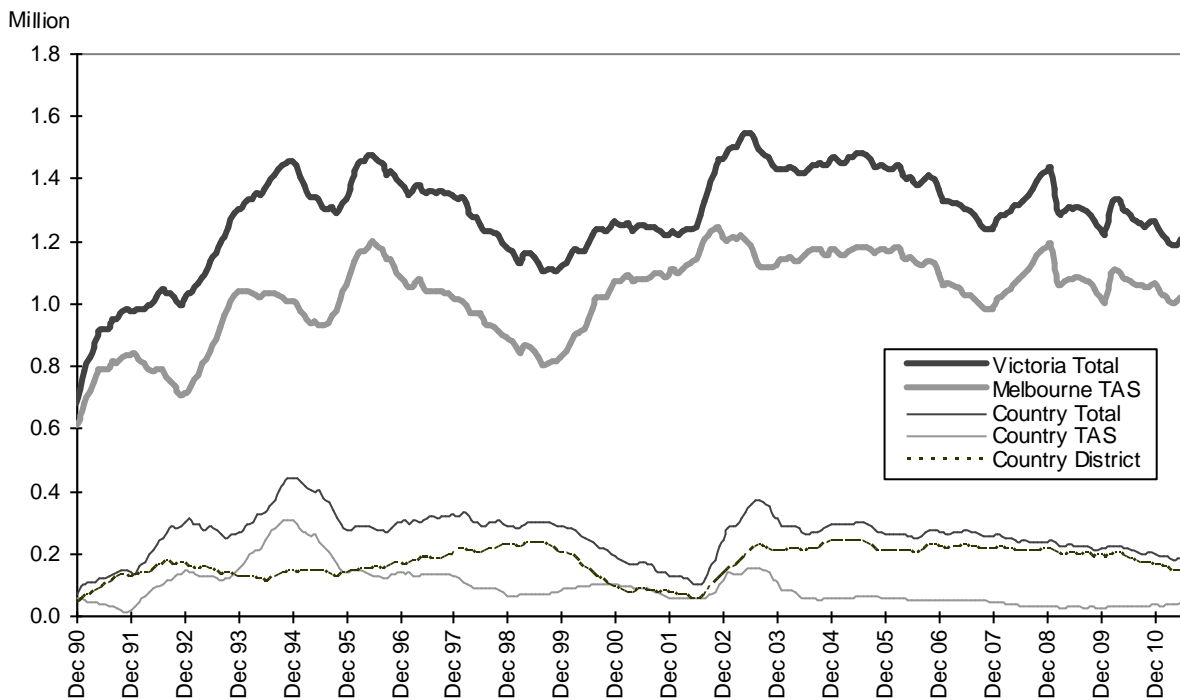


Graph 4b - Driver/rider fatalities by BAC

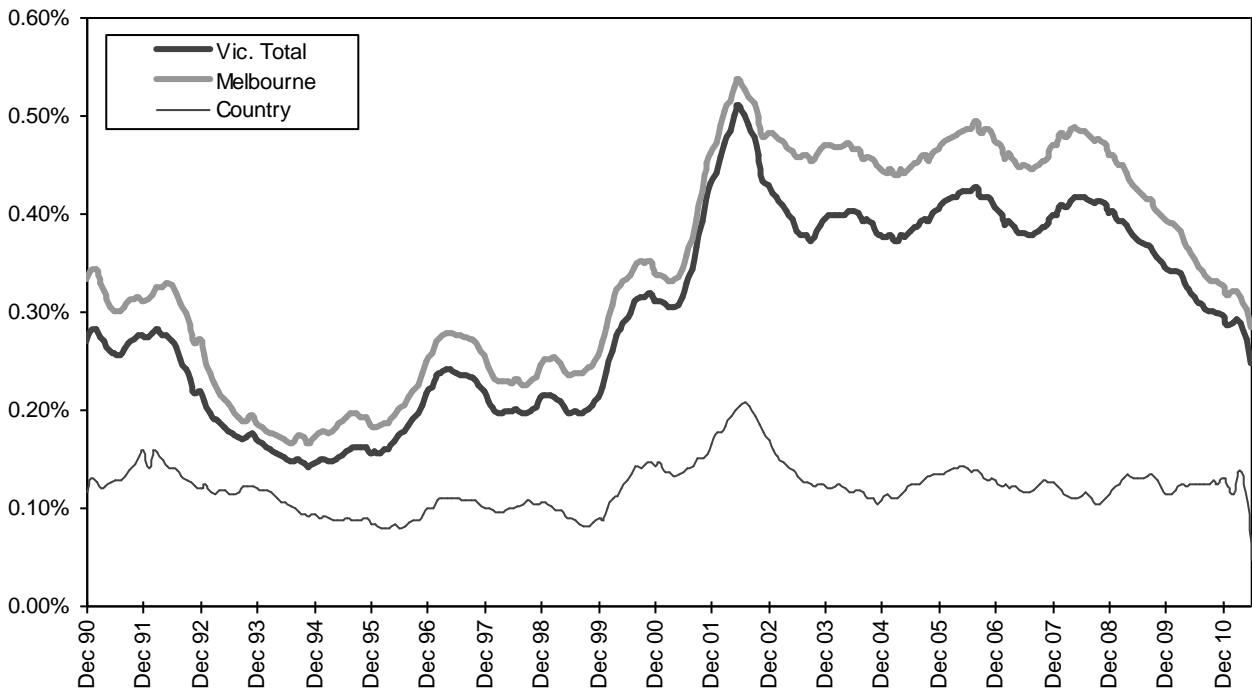




Graph 4c - Proportion of driver/rider fatalities with a BAC ge 0.05



Graph 5a - Boozed-Bus RBTs



Graph 5b - RBT: Percentage positive readings