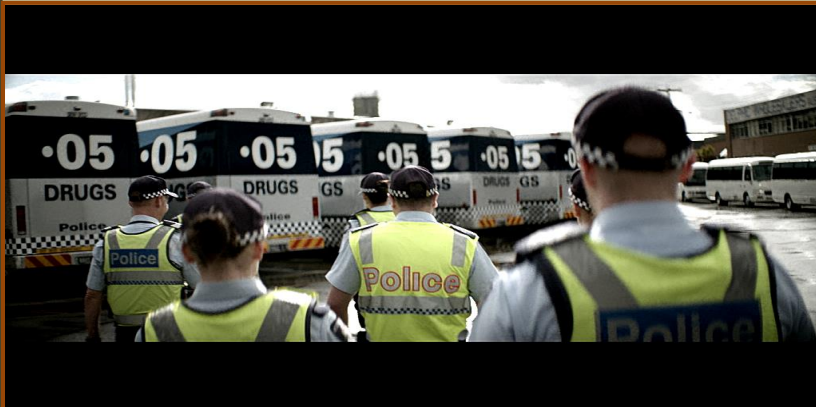


ROAD SAFETY STATISTICAL SUMMARY

October 2015



**TRANSPORT
ACCIDENT
COMMISSION**

60 Brougham Street
Geelong Vic 3220
PO Box 742
Geelong Vic 3220
Ausdoc DX 216079 Geelong

Telephone 1300 654 329
STD Toll Free 1800 332 556
Fax: 03 9656 9300
www.tac.vic.gov.au
ABN 22 033 947 623

Contents

Status Report.....	4
Fatalities.....	4
Claims involving an acute hospital admission*	5
Fatalities: 12 months to October 2015.....	6
Claims involving acute hospitalisation over 14 days: 12 months to April 2015 (claim acceptance date).....	8
Claims involving an acute hospital admission: 12 months to April 2015 (claim acceptance date).....	10
Fatalities: Victorian monthly totals since 1951	12
Fatalities by Week (2009 to 2015).....	13
The National Picture.....	14
Booze-Bus Random Breath Testing	15
Mobile Safety Camera Data	15
Explanations and References	16
Useful Internet Sites	17
Figures	18

Note about the data in this report

- All data provided in this report is the data most recently available at time of production. Fatalities, breath-test data and safety camera data are updated to the end of report month. A 6-month lag applies to TAC claims data.
- Reported data will have one extra day of exposure for leap years.
- Data is subject to revision as additional information about known accidents/claims is received, and as new accident/claim reports are received and processed.

*An acute hospital admission refers to a hospital admission that occurred within 7 days of accident.

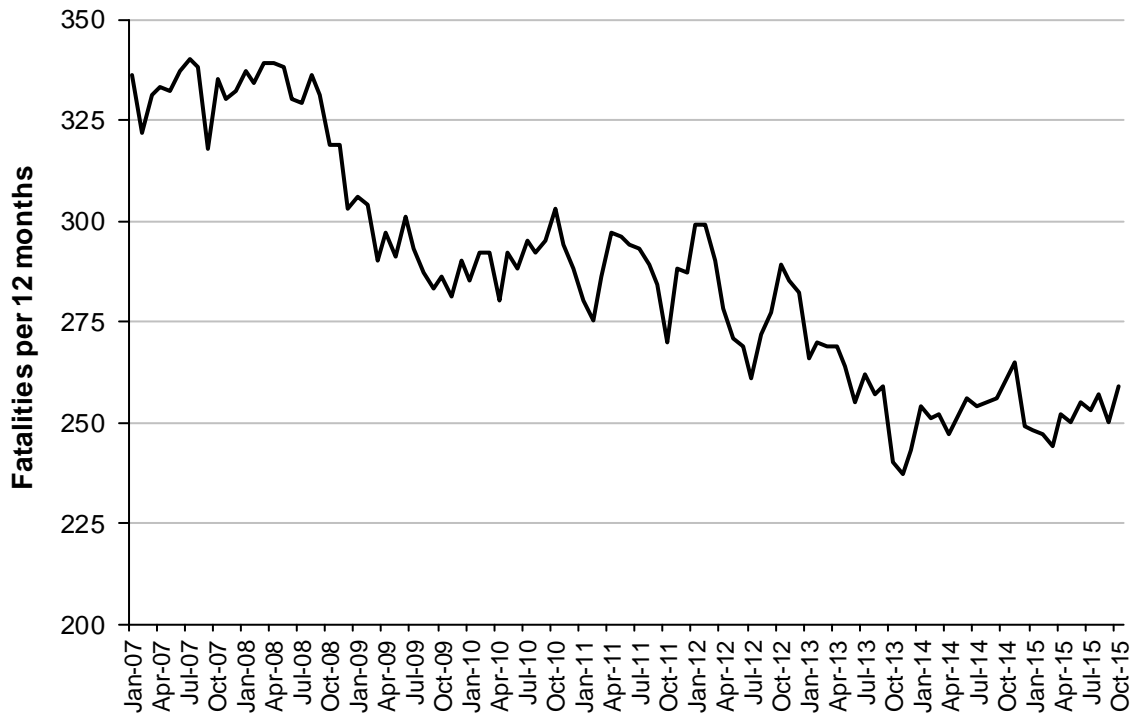
Status Report

Fatalities

- The rolling 12 month number of road fatalities in October 2015 stands at 259. The number of fatalities in 2014 stood at 260 (1% up).
- 28 people were fatally injured in October 2015 on Victorian roads. This compares to 19 in October 2014.

Fatalities (rolling 12 month, to end October 2015)

Category	2015	2014	2013	2015 v 2014		2015 v 2013		5 Year Av
Fatal Injuries (Rolling 12 Month Total)								
Fatal (to October)	259	260	240	-1	(-0%)	+19	(+8%)	264
per 10,000 veh	0.56	0.58	0.54	-0.02	(-3%)	+0.02	(+4%)	0.60
per 100,000 pop	4.37	4.46	4.20	-0.09	(-2%)	+0.17	(+4%)	4.60
Accidents (Rolling 12 Month Total)								
Fatal (to October)	237	232	220	5	(+2%)	17	(+8%)	241
per 10,000 veh	0.52	0.51	0.50	+0.01	(+2%)	+0.02	(+4%)	0.55
per 100,000 pop	4.00	3.98	3.85	0.02	(+1%)	0.15	(+4%)	4.21

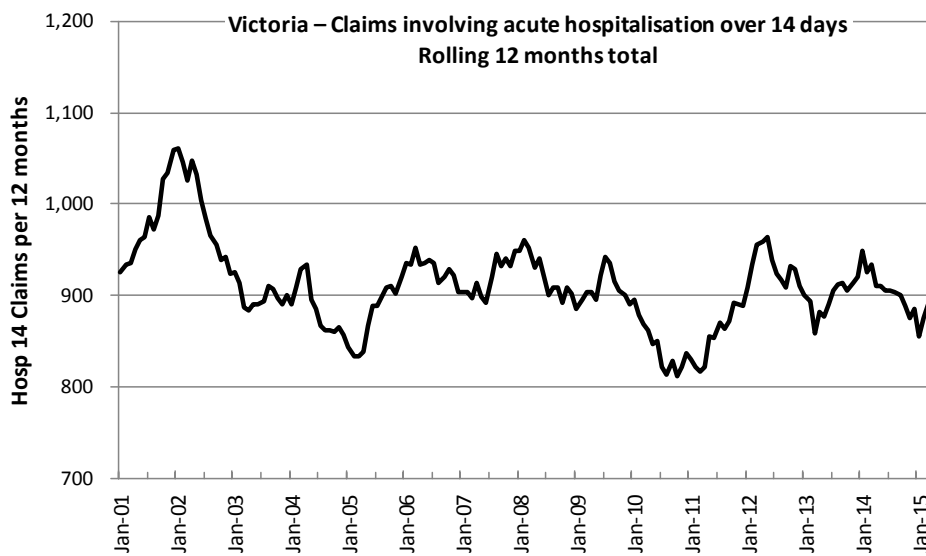


Victoria – Fatalities, rolling 12 months total

Claims involving an acute hospital admission*

(by claim acceptance date – rolling 12 month, to midnight 30 April 2015)

Category	2015	2014	2013	2015 v 2014		2015 v 2013		5 Year Av
Claims involving an acute hospitalisation over 14 days (Rolling 12 Month Total)								
Claims (to April)	896	911	882	-15	(-2%)	+14	(+2%)	894
per 100,000 pop	15.2	15.8	15.6	-0.6	(-4%)	-0.4	(-3%)	15.8
per 10,000 veh	2.0	2.0	2.0	0.0	(+0%)	0.0	(+0%)	2.1
All claims involving an acute hospitalisation (Rolling 12 Month Total)								
Claims (to April)	6,048	5,980	5,271	+68	(+1%)	+777	(+15%)	5,764
per 100,000 pop	102.9	103.6	93.1	-0.7	(-1%)	+9.8	(+11%)	100.9
per 10,000 veh	13.3	13.4	12.1	-0.1	(-1%)	+1.2	(+10%)	13.2



*An acute hospital admission refers to a hospital admission that occurred within 7 days of accident.

Fatalities: 12 months to October 2015

Category	2015	2014	2013	2015 v 2014		2015 v 2013		5 Year Av
Overview								
Fatalities	259	260	240	-1	(-0%)	+19	(+8%)	264
Accidents	237	232	220	+5	(+2%)	+17	(+8%)	241
Sex								
Female	74	74	80		(0%)	-6	(-8%)	77
Male	185	186	160	-1	(-1%)	+25	(+16%)	187
Roaduser								
Bicyclist	10	8	5	+2	(+25%)	+5	(+100%)	8
Driver	127	121	123	+6	(+5%)	+4	(+3%)	126
Motorcyclist	33	31	40	+2	(+6%)	-7	(-18%)	38
Passenger	54	54	41	0	(0%)	+13	(+32%)	52
Pedestrian	35	46	31	-11	(-24%)	+4	(+13%)	40
Location								
Melbourne	123	109	101	+14	(+13%)	+22	(+22%)	118
Rural Victoria	136	151	139	-15	(-10%)	-3	(-2%)	146
Agegroup								
0-4	3	3	0	0	(0%)	+3	NA	3
5-15	3	10	7	-7	(-70%)	-4	(-57%)	7
16-17	12	4	4	+8	(+200%)	+8	(+200%)	7
18-20	19	14	18	+5	(+36%)	+1	(+6%)	23
21-25	21	28	29	-7	(-25%)	-8	(-28%)	28
26-29	23	19	13	+4	(+21%)	+10	(+77%)	19
30-39	35	38	31	-3	(-8%)	+4	(+13%)	35
40-49	36	27	33	+9	(+33%)	+3	(+9%)	32
50-59	28	37	22	-9	(-24%)	+6	(+27%)	31
60-69	28	32	30	-4	(-13%)	-2	(-7%)	29
70+	49	48	52	+1	(+2%)	-3	(-6%)	48
Alctime								
High (Melb)	64	57	58	+7	(+12%)	+6	(+10%)	62
High (Rural)	59	57	55	+2	(+4%)	+4	(+7%)	64
High (Vic)	123	114	113	+9	(+8%)	+10	(+9%)	126
Low (Melb)	59	52	43	+7	(+13%)	+16	(+37%)	56
Low (Rural)	77	94	84	-17	(-18%)	-7	(-8%)	82
Low (Vic)	136	146	127	-10	(-7%)	+9	(+7%)	138
Accident Type								
Intersection								
Adjacent direction	40	31	31	+9	(+29%)	+9	(+29%)	32
Opposing direction	12	7	2	+5	(+71%)	+10	(+500%)	7
Mid-block/other								
Head on	33	46	38	-13	(-28%)	-5	(-13%)	38
Same direction	14	7	18	+7	(+100%)	-4	(-22%)	13
Manoeuvre/o'taking	19	9	11	+10	(+111%)	+8	(+73%)	14
On path	5	9	1	-4	(-44%)	+4	(+400%)	5
Single vehicle	97	100	101	-3	(-3%)	-4	(-4%)	107
Other (incl peds)	39	51	38	-12	(-24%)	+1	(+3%)	47

Fatalities: 12 months to October 2015 – Continued

Category	2015	2014	2013	2015 v 2014		2015 v 2013		5 Year Av
Police Service Area (based on Local Government Area (see p.13))								
BALLARAT	4	5	6	-1	(-20%)	-2	(-33%)	5
BANYULE	4	0	3	+4		+1	(+33%)	3
BASS COAST	3	10	6	-7	(-70%)	-3	(-50%)	7
BAW BAW	1	6	6	-5	(-83%)	-5	(-83%)	5
BENALLA	16	7	10	+9	(+129%)	+6	(+60%)	10
BENDIGO	4	4	7	0	(0%)	-3	(-43%)	6
BOROONDARA	3	2	6	+1	(+50%)	-3	(-50%)	3
BRIMBANK	5	4	5	+1	(+25%)	0	(0%)	7
CAMPASPE	4	7	4	-3	(-43%)	0	(0%)	5
CARDINIA	7	8	1	-1	(-13%)	+6	(+600%)	6
CASEY	4	6	6	-2	(-33%)	-2	(-33%)	6
CENTRAL GOLDFIELDS	2	3	3	-1	(-33%)	-1	(-33%)	3
DAREBIN	2	2	1	0	(0%)	+1	(+100%)	3
EAST GIPPSLAND	12	3	4	+9	(+300%)	+8	(+200%)	7
FRANKSTON	1	6	0	-5	(-83%)	+1		3
GEELONG	4	6	12	-2	(-33%)	-8	(-67%)	9
GLEN EIRA	3	6	6	-3	(-50%)	-3	(-50%)	5
GREATER DANDENONG	7	3	5	+4	(+133%)	+2	(+40%)	4
HOBSONS BAY	2	0	3	+2		-1	(-33%)	1
HORSHAM	6	1	5	+5	(+500%)	+1	(+20%)	4
HUME	6	4	11	+2	(+50%)	-5	(-45%)	6
KINGSTON	2	5	8	-3	(-60%)	-6	(-75%)	5
KNOX	5	6	4	-1	(-17%)	+1	(+25%)	3
LA TROBE	4	3	7	+1	(+33%)	-3	(-43%)	5
MACEDON RANGES	7	11	5	-4	(-36%)	+2	(+40%)	6
MANNINGHAM	0	1	2	-1	(-100%)	-2	(-100%)	1
MARIBYRNONG	4	1	3	+3	(+300%)	+1	(+33%)	3
MAROONDAH	2	1	1	+1	(+100%)	+1	(+100%)	2
MELBOURNE	6	3	2	+3	(+100%)	+4	(+200%)	4
MELTON	6	9	3	-3	(-33%)	+3	(+100%)	6
MILDURA	1	6	3	-5	(-83%)	-2	(-67%)	3
MITCHELL	10	5	7	+5	(+100%)	+3	(+43%)	7
MONASH	3	3	4	0	(0%)	-1	(-25%)	4
MOONEE VALLEY	3	4	1	-1	(-25%)	+2	(+200%)	2
MOORABOOL	5	7	8	-2	(-29%)	-3	(-38%)	8
MORELAND	3	6	1	-3	(-50%)	+2	(+200%)	3
MORNINGTON PENINSULA	13	6	2	+7	(+117%)	+11	(+550%)	7
NILLUMBIK	2	1	0	+1	(+100%)	+2		2
NORTHERN GRAMPPIANS	2	6	4	-4	(-67%)	-2	(-50%)	4
PORT PHILLIP	1	2	3	-1	(-50%)	-2	(-67%)	2
SHEPPARTON	7	2	5	+5	(+250%)	+2	(+40%)	6
SOUTHERN GRAMPPIANS	6	6	2	0	(0%)	+4	(+200%)	5
STONNINGTON	4	3	2	+1	(+33%)	+2	(+100%)	2
SURF COAST	10	4	3	+6	(+150%)	+7	(+233%)	7
SWAN HILL	3	8	7	-5	(-63%)	-4	(-57%)	5
WANGARATTA	8	11	11	-3	(-27%)	-3	(-27%)	10
WARRNAMBOOL	8	16	7	-8	(-50%)	+1	(+14%)	8
WELLINGTON	4	7	3	-3	(-43%)	+1	(+33%)	5
WHITEHORSE	4	3	1	+1	(+33%)	+3	(+300%)	3
WHITTLESEA	5	4	4	+1	(+25%)	+1	(+25%)	5
WODONGA	4	7	4	-3	(-43%)	0	(0%)	4
WYNDHAM	7	4	4	+3	(+75%)	+3	(+75%)	7
YARRA	1	0	2	+1		-1	(-50%)	1
YARRA RANGES	9	6	7	+3	(+50%)	+2	(+29%)	8

Claims involving acute hospitalisation over 14 days: 12 months to April 2015 (claim acceptance date)

Category	2015	2014	2013	2015 v 2014		2015 v 2013		5 Year Av
Overview								
Claims	896	911	882	-15	(-2%)	+14	(+2%)	894
Sex								
Female	374	378	366	-4	(-1%)	+8	(+2%)	365
Male	520	533	515	-13	(-2%)	+5	(+1%)	528
Roaduser								
Driver	353	361	388	-8	(-2%)	-35	(-9%)	355
Passenger	134	152	139	-18	(-12%)	-5	(-4%)	142
Motorcyclist	183	151	124	+32	(+21%)	+59	(+48%)	161
Pedestrian	163	198	177	-35	(-18%)	-14	(-8%)	180
Cyclist	33	33	32	0	(0%)	+1	(+3%)	36
Train/Tram	11	4	7	+7	(+175%)	+4	(+57%)	8
Location								
Melbourne	566	586	550	-20	(-3%)	+16	(+3%)	575
Rural Victoria	302	313	329	-11	(-4%)	-27	(-8%)	310
Agegroup								
0-4	4	2	2	+2	(+100%)	+2	(+100%)	3
5-15	16	12	9	+4	(+33%)	+7	(+78%)	13
16-17	10	13	18	-3	(-23%)	-8	(-44%)	17
18-20	46	63	64	-17	(-27%)	-18	(-28%)	56
21-25	80	79	81	+1	(+1%)	-1	(-1%)	82
26-29	54	42	38	+12	(+29%)	+16	(+42%)	51
30-39	110	96	113	+14	(+15%)	-3	(-3%)	109
40-49	114	122	113	-8	(-7%)	+1	(+1%)	117
50-59	101	110	104	-9	(-8%)	-3	(-3%)	103
60-69	101	112	101	-11	(-10%)	0	(0%)	105
70+	260	260	239	0	(0%)	+21	(+9%)	237
Alctime								
High (Melb)	209	247	242	-38	(-15%)	-33	(-14%)	241
High (Rural)	119	119	127	0	(0%)	-8	(-6%)	123
High (Vic)	328	366	369	-38	(-10%)	-41	(-11%)	364
Low (Melb)	357	339	308	+18	(+5%)	+49	(+16%)	333
Low (Rural)	183	194	202	-11	(-6%)	-19	(-9%)	187
Low (Vic)	540	533	510	+7	(+1%)	+30	(+6%)	520
Accident Type								
Intersection								
Adjacent direction	97	113	126	-16	(-14%)	-29	(-23%)	114
Opposing direction	47	68	51	-21	(-31%)	-4	(-8%)	58
Mid-block/other								
Head on	84	90	84	-6	(-7%)	0	(0%)	84
Same direction	89	72	80	+17	(+24%)	+9	(+11%)	85
Manoeuvre/o'taking	53	62	64	-9	(-15%)	-11	(-17%)	56
On path	35	21	21	+14	(+67%)	+14	(+67%)	24
Single vehicle	280	240	236	+40	(+17%)	+44	(+19%)	251
Other (incl peds)	211	245	220	-34	(-14%)	-9	(-4%)	222

Note: Excludes rejected claims and claims for interstate crashes.

Claims involving acute hospitalisation over 14 days: 12 months to April 2015 (claim acceptance date) –
Continued

Category	2015	2014	2013	2015 v 2013		2015 v 2014		5 Year Av
Police Service Area (based on Local Government Area (see p.13))								
BALLARAT	13	23	13	-10	(-43%)	0	(0%)	16
BANYULE	8	8	12	0	(0%)	-4	(-33%)	10
BASS COAST	18	19	14	-1	(-5%)	+4	(+29%)	16
BAW BAW	12	6	9	+6	(+100%)	+3	(+33%)	10
BENALLA	25	15	21	+10	(+67%)	+4	(+19%)	21
BENDIGO	8	15	15	-7	(-47%)	-7	(-47%)	16
BOROONDARA	21	25	17	-4	(-16%)	+4	(+24%)	23
BRIMBANK	30	18	24	+12	(+67%)	+6	(+25%)	23
CAMPASPE	5	7	8	-2	(-29%)	-3	(-38%)	6
CARDINIA	17	10	12	+7	(+70%)	+5	(+42%)	15
CASEY	31	27	28	+4	(+15%)	+3	(+11%)	26
CENTRAL GOLDFIELDS	2	7	8	-5	(-71%)	-6	(-75%)	5
DAREBIN	16	17	21	-1	(-6%)	-5	(-24%)	17
EAST GIPPSLAND	10	7	13	+3	(+43%)	-3	(-23%)	11
FRANKSTON	17	12	11	+5	(+42%)	+6	(+55%)	15
GEELONG	25	30	37	-5	(-17%)	-12	(-32%)	29
GLEN EIRA	19	39	22	-20	(-51%)	-3	(-14%)	29
GREATER DANDENONG	18	35	20	-17	(-49%)	-2	(-10%)	26
HOBSONS BAY	8	13	11	-5	(-38%)	-3	(-27%)	10
HORSHAM	7	5	8	+2	(+40%)	-1	(-13%)	7
HUME	26	23	27	+3	(+13%)	-1	(-4%)	25
KINGSTON	22	24	19	-2	(-8%)	+3	(+16%)	20
KNOX	13	19	20	-6	(-32%)	-7	(-35%)	16
LA TROBE	13	10	13	+3	(+30%)	0	(0%)	14
MACEDON RANGES	17	21	17	-4	(-19%)	0	(0%)	17
MANNINGHAM	11	14	20	-3	(-21%)	-9	(-45%)	14
MARIBYRNONG	7	7	15	0	(0%)	-8	(-53%)	12
MAROONDAH	4	8	4	-4	(-50%)	0	(0%)	8
MELBOURNE	31	29	33	+2	(+7%)	-2	(-6%)	31
MELTON	14	12	18	+2	(+17%)	-4	(-22%)	13
MILDURA	6	7	7	-1	(-14%)	-1	(-14%)	8
MITCHELL	13	27	25	-14	(-52%)	-12	(-48%)	18
MONASH	19	23	17	-4	(-17%)	+2	(+12%)	22
MOONEE VALLEY	25	15	20	+10	(+67%)	+5	(+25%)	18
MOORABOOL	21	14	16	+7	(+50%)	+5	(+31%)	15
MORELAND	29	33	27	-4	(-12%)	+2	(+7%)	27
MORNINGTON PENINSULA	27	24	30	+3	(+13%)	-3	(-10%)	29
NILLUMBIK	9	5	8	+4	(+80%)	+1	(+13%)	7
NORTHERN GRAMPPIANS	12	12	11	0	(0%)	+1	(+9%)	9
PORT PHILLIP	19	19	6	0	(0%)	+13	(+217%)	13
SHEPPARTON	8	13	16	-5	(-38%)	-8	(-50%)	11
SOUTHERN GRAMPPIANS	10	10	8	0	(0%)	+2	(+25%)	9
STONNINGTON	16	12	11	+4	(+33%)	+5	(+45%)	16
SURF COAST	14	12	9	+2	(+17%)	+5	(+56%)	13
SWAN HILL	16	6	8	+10	(+167%)	+8	(+100%)	9
WANGARATTA	16	15	17	+1	(+7%)	-1	(-6%)	17
WARRNAMBOOL	11	13	14	-2	(-15%)	-3	(-21%)	13
WELLINGTON	10	6	11	+4	(+67%)	-1	(-9%)	9
WHITEHORSE	19	22	15	-3	(-14%)	+4	(+27%)	20
WHITTLESEA	19	24	23	-5	(-21%)	-4	(-17%)	21
WODONGA	10	13	11	-3	(-23%)	-1	(-9%)	10
WYNDHAM	26	19	23	+7	(+37%)	+3	(+13%)	21
YARRA	15	15	11	0	(0%)	+4	(+36%)	13
YARRA RANGES	30	35	25	-5	(-14%)	+5	(+20%)	31

Note: excludes rejected claims and claims for interstate crashes

Claims involving an acute hospital admission: 12 months to April 2015 (claim acceptance date)

Category	2015	2014	2013	2015 v 2014	2015 v 2013	2015 v 2013	5 Year Av
Overview							
Claims	6,048	5,980	5,271	+68	(+1%)	+777	(+15%) 5,764
Sex							
Female	2,600	2,484	2,225	+116	(+5%)	+375	(+17%) 2,437
Male	3,441	3,490	3,044	-49	(-1%)	+397	(+13%) 3,323
Roaduser							
Driver	2,709	2,666	2,520	+43	(+2%)	+189	(+8%) 2,632
Passenger	1,051	1,012	901	+39	(+4%)	+150	(+17%) 1,019
Motorcyclist	1,101	1,151	746	-50	(-4%)	+355	(+48%) 987
Pedestrian	628	654	616	-26	(-4%)	+12	(+2%) 640
Cyclist	405	383	341	+22	(+6%)	+64	(+19%) 369
Train/Tram	35	30	25	+5	(+17%)	+10	(+40%) 28
Location							
Melbourne	4,068	4,039	3,482	+29	(+1%)	+586	(+17%) 3,885
Rural Victoria	1,746	1,809	1,750	-63	(-3%)	-4	(-0%) 1,791
Agegroup							
0-4	54	53	44	+1	(+2%)	+10	(+23%) 50
5-15	213	184	185	+29	(+16%)	+28	(+15%) 192
16-17	93	94	113	-1	(-1%)	-20	(-18%) 111
18-20	467	538	467	-71	(-13%)	0	(0%) 517
21-25	750	772	630	-22	(-3%)	+120	(+19%) 720
26-29	487	452	393	+35	(+8%)	+94	(+24%) 444
30-39	939	878	814	+61	(+7%)	+125	(+15%) 883
40-49	911	904	768	+7	(+1%)	+143	(+19%) 863
50-59	779	743	676	+36	(+5%)	+103	(+15%) 722
60-69	539	553	462	-14	(-3%)	+77	(+17%) 517
70+	816	809	719	+7	(+1%)	+97	(+13%) 743
Alctime							
High (Melb)	1,662	1,748	1,531	-86	(-5%)	+131	(+9%) 1,703
High (Rural)	719	720	734	-1	(-0%)	-15	(-2%) 753
High (Vic)	2,381	2,468	2,265	-87	(-4%)	+116	(+5%) 2,456
Low (Melb)	2,406	2,291	1,951	+115	(+5%)	+455	(+23%) 2,182
Low (Rural)	1,027	1,089	1,016	-62	(-6%)	+11	(+1%) 1,038
Low (Vic)	3,433	3,380	2,967	+53	(+2%)	+466	(+16%) 3,220
Accident Type							
Intersection							
Adjacent direction	731	854	759	-123	(-14%)	-28	(-4%) 822
Opposing direction	491	522	479	-31	(-6%)	+12	(+3%) 485
Mid-block/other							
Head on	316	325	310	-9	(-3%)	+6	(+2%) 325
Same direction	937	842	777	+95	(+11%)	+160	(+21%) 887
Manoeuvre/o'taking	323	346	300	-23	(-7%)	+23	(+8%) 323
On path	287	274	209	+13	(+5%)	+78	(+37%) 238
Single vehicle	1,754	1,653	1,405	+101	(+6%)	+349	(+25%) 1,609
Other (incl peds)	1,209	1,164	1,032	+45	(+4%)	+177	(+17%) 1,074

Note: excludes rejected claims and claims for interstate crashes

Claims involving an acute hospital admission: 12 months to April 2015 (claim acceptance date) – Continued

Category	2015	2014	2013	2015 v 2014		2015 v 2013		5 Year Av
Police Service Area (based on Local Government Area (see p.13))								
BALLARAT	77	103	89	-26	(-25%)	-12	(-13%)	95
BANYULE	58	57	63	+1	(+2%)	-5	(-8%)	60
BASS COAST	90	90	67	0	(0%)	+23	(+34%)	83
BAW BAW	61	58	61	+3	(+5%)	0	(0%)	60
BENALLA	110	117	110	-7	(-6%)	0	(0%)	118
BENDIGO	91	78	108	+13	(+17%)	-17	(-16%)	98
BOROONDARA	131	154	112	-23	(-15%)	+19	(+17%)	136
BRIMBANK	156	139	138	+17	(+12%)	+18	(+13%)	148
CAMPASPE	34	34	39	0	(0%)	-5	(-13%)	37
CARDINIA	122	99	82	+23	(+23%)	+40	(+49%)	100
CASEY	274	264	209	+10	(+4%)	+65	(+31%)	244
CENTRAL GOLDFIELDS	31	28	30	+3	(+11%)	+1	(+3%)	27
DAREBIN	88	100	98	-12	(-12%)	-10	(-10%)	98
EAST GIPPSLAND	64	47	85	+17	(+36%)	-21	(-25%)	64
FRANKSTON	131	107	116	+24	(+22%)	+15	(+13%)	131
GEELONG	206	244	202	-38	(-16%)	+4	(+2%)	226
GLEN EIRA	177	202	146	-25	(-12%)	+31	(+21%)	177
GREATER DANDENONG	228	275	190	-47	(-17%)	+38	(+20%)	221
HOBSONS BAY	66	74	50	-8	(-11%)	+16	(+32%)	66
HORSHAM	32	31	31	+1	(+3%)	+1	(+3%)	34
HUME	192	168	132	+24	(+14%)	+60	(+45%)	158
KINGSTON	137	148	127	-11	(-7%)	+10	(+8%)	134
KNOX	112	121	83	-9	(-7%)	+29	(+35%)	114
LA TROBE	57	70	58	-13	(-19%)	-1	(-2%)	65
MACEDON RANGES	92	111	81	-19	(-17%)	+11	(+14%)	89
MANNINGHAM	68	69	77	-1	(-1%)	-9	(-12%)	69
MARIBYRNONG	60	78	61	-18	(-23%)	-1	(-2%)	75
MAROONDAH	57	56	56	+1	(+2%)	+1	(+2%)	62
MELBOURNE	243	254	236	-11	(-4%)	+7	(+3%)	241
MELTON	76	83	70	-7	(-8%)	+6	(+9%)	76
MILDURA	19	47	30	-28	(-60%)	-11	(-37%)	36
MITCHELL	109	99	96	+10	(+10%)	+13	(+14%)	93
MONASH	201	200	178	+1	(+0%)	+23	(+13%)	181
MOONEE VALLEY	133	110	107	+23	(+21%)	+26	(+24%)	110
MOORABOOL	101	116	97	-15	(-13%)	+4	(+4%)	98
MORELAND	165	144	125	+21	(+15%)	+40	(+32%)	147
MORNINGTON PENINSULA	155	145	122	+10	(+7%)	+33	(+27%)	158
NILLUMBIK	40	26	41	+14	(+54%)	-1	(-2%)	38
NORTHERN GRAMPPIANS	55	30	43	+25	(+83%)	+12	(+28%)	39
PORT PHILLIP	163	133	103	+30	(+23%)	+60	(+58%)	125
SHEPPARTON	66	69	71	-3	(-4%)	-5	(-7%)	65
SOUTHERN GRAMPPIANS	44	48	47	-4	(-8%)	-3	(-6%)	47
STONNINGTON	148	136	117	+12	(+9%)	+31	(+26%)	133
SURF COAST	70	72	50	-2	(-3%)	+20	(+40%)	69
SWAN HILL	43	35	36	+8	(+23%)	+7	(+19%)	37
WANGARATTA	92	103	96	-11	(-11%)	-4	(-4%)	97
WARRNAMBOOL	68	65	74	+3	(+5%)	-6	(-8%)	81
WELLINGTON	85	56	62	+29	(+52%)	+23	(+37%)	72
WHITEHORSE	102	116	103	-14	(-12%)	-1	(-1%)	116
WHITTLESEA	133	149	149	-16	(-11%)	-16	(-11%)	137
WODONGA	49	58	87	-9	(-16%)	-38	(-44%)	63
WYNDHAM	170	154	139	+16	(+10%)	+31	(+22%)	147
YARRA	116	118	83	-2	(-2%)	+33	(+40%)	108
YARRA RANGES	166	160	169	+6	(+4%)	-3	(-2%)	177

Note: excludes rejected claims and claims for interstate crashes

Fatalities: Victorian monthly totals since 1951

Year	Jan	Feb	Mar	Apr	May	Jun	Jul	Aug	Sep	Oct	Nov	Dec	Totals
1951							61	59	52	38	29	41	
1952	45	40	54	61	54	69	67	55	44	44	31	20	584
1953	23	28	54	58	49	42	50	37	44	27	36	32	480
1954	44	42	28	60	55	36	63	33	25	52	30	41	509
1955	44	36	45	55	48	56	64	44	44	32	40	40	548
1956	34	48	51	67	53	65	71	47	39	39	44	48	606
1957	50	41	46	58	52	54	57	53	51	46	32	49	589
1958	50	38	42	58	54	41	54	53	57	40	57	52	596
1959	50	57	61	50	75	55	42	48	52	55	63	63	671
1960	49	53	57	76	70	70	67	62	61	77	52	66	760
1961	63	57	68	74	58	68	78	82	59	62	60	65	794
1962	65	41	76	78	72	80	70	77	62	53	64	70	808
1963	67	56	65	85	66	68	77	55	55	58	61	67	780
1964	73	71	78	71	83	89	80	89	67	66	62	75	904
1965	63	64	86	88	80	87	79	69	81	77	68	87	929
1966	75	59	75	103	74	86	87	80	75	66	90	85	955
1967	61	79	91	97	81	71	59	67	70	68	60	83	887
1968	70	78	86	78	73	76	73	77	72	80	81	105	949
1969	79	68	79	87	86	77	87	83	87	83	94	101	1,011
1970	85	84	106	80	87	88	110	106	78	95	68	74	1,061
1971	83	75	77	68	76	86	85	72	78	73	74	76	923
1972	61	62	75	82	75	71	98	85	83	62	80	81	915
1973	75	75	95	85	64	66	61	85	89	88	66	86	935
1974	56	62	81	60	70	73	67	62	53	70	80	72	806
1975	67	65	87	73	97	94	57	75	69	66	71	89	910
1976	79	78	88	78	69	79	60	70	82	78	77	100	938
1977	65	71	89	79	65	79	70	91	68	74	96	107	954
1978	75	54	95	63	64	69	68	77	65	84	83	72	869
1979	63	60	86	75	45	64	66	75	69	79	72	93	847
1980	48	55	66	59	47	56	60	53	45	58	61	49	657
1981	69	60	58	61	74	65	61	63	68	71	59	57	766
1982	55	53	59	59	67	45	47	71	53	69	65	66	709
1983	42	59	53	63	62	61	65	51	59	43	54	52	664
1984	65	48	58	50	56	48	46	50	71	53	55	58	658
1985	56	47	50	65	75	50	51	50	58	61	56	64	683
1986	56	50	70	69	59	53	42	54	54	52	59	51	669
1987	62	43	57	52	63	59	62	49	62	61	55	80	705
1988	49	58	69	54	79	50	54	52	64	59	43	70	701
1989	76	65	80	59	67	73	52	65	82	50	41	66	776
1990	48	44	55	39	56	64	41	34	48	35	40	44	548
1991	45	39	70	30	34	29	44	47	41	36	35	53	503
1992	34	33	34	47	33	29	23	27	28	38	30	40	396
1993	27	40	37	39	44	33	33	27	34	39	43	40	436
1994	36	31	44	35	27	33	29	37	17	27	32	30	378
1995	38	35	26	33	34	41	27	34	34	32	38	46	418
1996	40	47	35	38	28	29	30	35	49	24	33	30	418
1997	36	25	30	30	40	22	39	26	26	29	39	35	377
1998	29	29	32	36	31	22	40	19	37	36	49	30	390
1999	32	31	35	35	34	24	35	26	28	38	29	37	384
2000	32	26	46	32	39	32	33	29	36	29	44	29	407
2001	44	30	31	32	31	41	34	37	35	51	41	37	444
2002	32	31	45	31	45	32	27	25	31	30	31	37	397
2003	21	41	36	28	31	28	20	23	23	24	24	31	330
2004	32	22	30	30	46	28	27	26	22	28	25	27	343
2005	33	27	47	21	29	23	30	25	25	33	17	36	346
2006	24	37	23	23	27	23	25	22	43	20	31	39	337
2007	23	23	32	25	26	28	28	20	23	37	26	41	332
2008	28	20	37	25	25	20	27	27	18	25	26	25	303
2009	31	18	23	32	19	30	19	21	14	28	21	34	290
2010	26	25	23	20	31	26	26	18	17	36	12	28	288
2011	18	20	34	31	30	24	25	14	12	22	30	27	287
2012	30	20	25	19	23	22	17	25	17	34	26	24	282
2013	14	24	24	19	18	13	24	20	19	15	23	30	243
2014	25	21	25	14	23	17	22	21	20	19	28	14	249
2015	25	22	23	21	21	22	18	25	13	28			
Ave	48	46	55	53	53	51	51	49	49	49	49	55	613
Max	85	84	106	103	97	94	110	106	89	95	96	107	1,061
Min	14	18	23	14	18	13	17	14	12	15	12	14	243

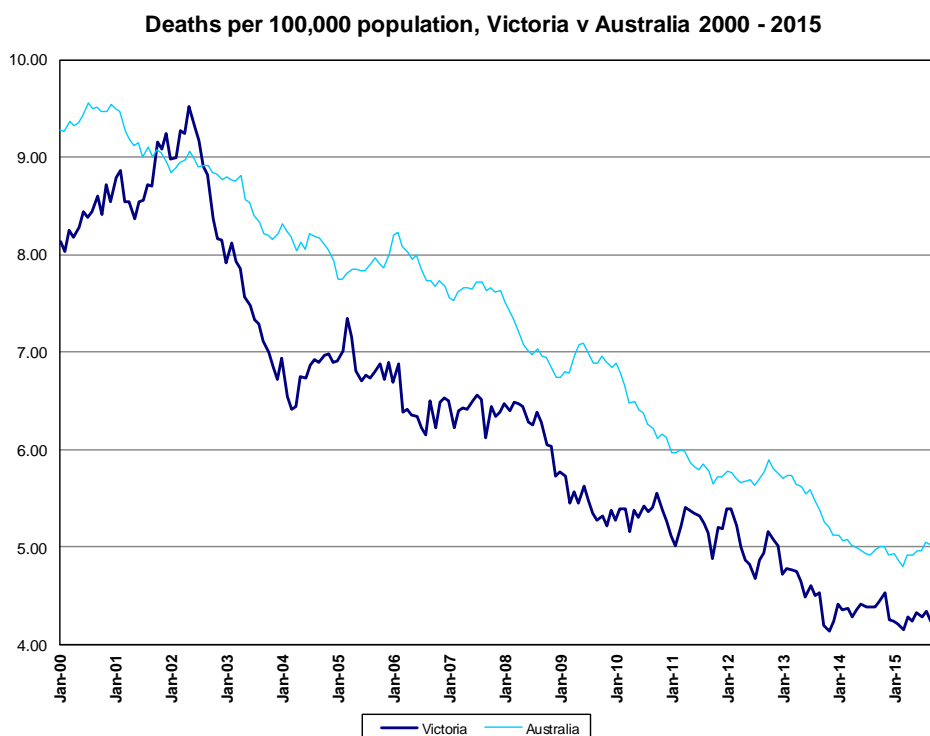
Fatalities by Week (2009 to 2015)

Week Ending	2009	2010	2011	2012	2013	2014	2015	Cumulative 2015	% Change 2015-2014	12 Month Moving Total
5-Jan	7	3	2	3	1	0	2	2	-	251
12-Jan	10	5	6	7	3	5	5	7	+40%	251
19-Jan	4	6	3	8	6	7	6	13	+8%	250
26-Jan	4	5	4	9	4	9	2	15	-29%	243
2-Feb	6	9	6	5	3	6	10	25	-7%	247
9-Feb	6	7	5	3	8	4	6	31	0%	249
16-Feb	7	4	6	7	6	8	4	35	-10%	245
23-Feb	4	8	3	6	6	2	6	41	0%	249
2-Mar	1	7	3	2	2	6	4	45	-4%	247
9-Mar	3	2	10	3	4	8	8	53	-4%	247
16-Mar	6	8	6	11	6	4	6	59	0%	249
23-Mar	6	3	9	5	10	4	2	61	-3%	247
30-Mar	8	7	9	6	2	6	3	64	-7%	244
6-Apr	5	4	6	7	4	6	3	67	-11%	241
13-Apr	5	5	9	2	6	6	6	73	-10%	241
20-Apr	11	7	7	6	4	2	8	81	-2%	247
27-Apr	9	1	6	3	5	2	5	86	+1%	250
4-May	6	6	6	10	6	3	4	90	+2%	251
11-May	7	8	6	2	3	4	6	96	+4%	253
18-May	1	4	7	4	1	3	4	100	+5%	254
25-May	2	11	10	6	2	5	4	104	+4%	253
1-Jun	6	5	5	2	9	9	5	109	0%	249
8-Jun	4	7	4	8	2	2	5	114	+3%	252
15-Jun	9	4	6	3	3	2	4	118	+4%	254
22-Jun	7	8	7	8	5	3	4	122	+5%	255
29-Jun	9	7	6	3	1	8	5	127	+2%	252
6-Jul	3	7	4	2	5	6	11	138	+6%	257
13-Jul	6	2	8	5	7	7	2	140	+2%	252
20-Jul	4	3	6	5	4	3	2	142	+1%	251
27-Jul	5	8	6	5	5	4	4	146	+1%	251
3-Aug	4	10	3	1	8	4	6	152	+3%	253
10-Aug	7	3	5	5	1	5	4	156	+2%	252
17-Aug	6	5	3	5	3	6	8	164	+3%	254
24-Aug	3	5	2	6	6	4	8	172	+6%	258
31-Aug	3	1	3	8	5	5	3	175	+4%	256
7-Sep	2	5	1	5	5	4	3	178	+3%	255
14-Sep	4	1	4	6	2	6	3	181	+2%	252
21-Sep	4	4	1	3	3	4	2	183	+1%	250
28-Sep	3	5	5	3	8	3	5	188	+2%	252
5-Oct	2	9	4	7	3	4	4	192	+2%	252
12-Oct	6	10	5	8	2	8	6	198	+1%	250
19-Oct	8	5	3	9	3	0	6	204	+4%	256
26-Oct	8	7	3	6	3	8	8	212	+3%	256
2-Nov	5	8	8	6	6	2				
9-Nov	3	1	6	7	8	3				
16-Nov	9	2	12	6	2	8				
23-Nov	6	3	9	5	8	3				
30-Nov	4	5	2	9	4	13				
7-Dec	5	4	10	7	6	5				
14-Dec	8	8	3	4	10	3				
21-Dec	11	6	7	1	9	3				
28-Dec	6	8	6	8	4	3				
31-Dec	2	2	1	1	1	1				
Total	290	288	287	282	243	249				

The National Picture

State	Fatalities (12 months to October)					2015 v 2014	
	2015	2014	2013	2012			
NSW	338	322	334	385	+16	(+5%)	
VIC	259	260	240	289	-1	(-0%)	
QLD	236	229	277	293	+7	(+3%)	
SA	116	96	101	88	+20	(+21%)	
WA	164	178	168	182	-14	(-8%)	
TAS	40	42	29	31	-2	(-5%)	
NT	45	39	42	52	+6	(+15%)	
ACT	12	9	9	9	+3	(+33%)	
AUST TOTAL	1,210	1,174	1,200	1,329	+36	(+3%)	
AUST minus VIC	951	915	960	1,040	+36	(+4%)	

State	Fatalities per 10,000 registered vehicles (12 months to October)			Fatalities per 100,000 population (12 months to October)		
	2015	2014	2013	2015	2014	2013
NSW	0.64	0.63	0.67	4.44	4.29	4.52
VIC	0.56	0.58	0.54	4.37	4.46	4.20
QLD	0.62	0.61	0.76	4.94	4.86	5.97
SA	0.86	0.72	0.77	6.83	5.70	6.05
WA	0.75	0.82	0.81	6.26	6.94	6.71
TAS	0.88	0.95	0.66	7.75	8.16	5.65
NT	2.89	2.55	2.81	18.02	15.97	17.59
ACT	0.42	0.32	0.33	3.09	2.33	2.36
AUST TOTAL	0.67	0.66	0.69	5.09	5.01	5.26
AUST minus VIC	0.70	0.69	0.75	5.24	5.16	5.54



Booze-Bus Random Breath Testing

12 months to September 2015 (monthly totals)

	2014			2015								
	Oct	Nov	Dec	Jan	Feb	Mar	Apr	May	Jun	Jul	Aug	Sep
Melbourne	100,252	86,261	99,008	95,430	76,758	84,559	74,387	70,603	63,988	64,557	78,225	79,794
Country	8,116	10,510	7,084	5,191	7,909	5,830	3,095	7,283	10,186	2,833	3,734	4,598
Vic Total	108,368	96,771	106,092	100,621	84,667	90,389	77,482	77,886	74,174	67,390	81,959	84,392

12 months to September 2015 vs previous 12 months

	2015	2014	2013	2015 v 2014		2015 v 2013	
Melbourne	1,172,395	1,060,175	1,062,075	+112220	(+11%)	+110320	(+10%)
Country	99,061	90,264	101,223	+8797	(+10%)	-2162	(-2%)
Vic Total	1,271,456	1,150,439	1,163,298	+121017	(+11%)	+108158	(+9%)

Mobile Safety Camera Data

Speed Infringements Issued from Mobile Cameras (monthly totals)

Monthly Average = 32,664

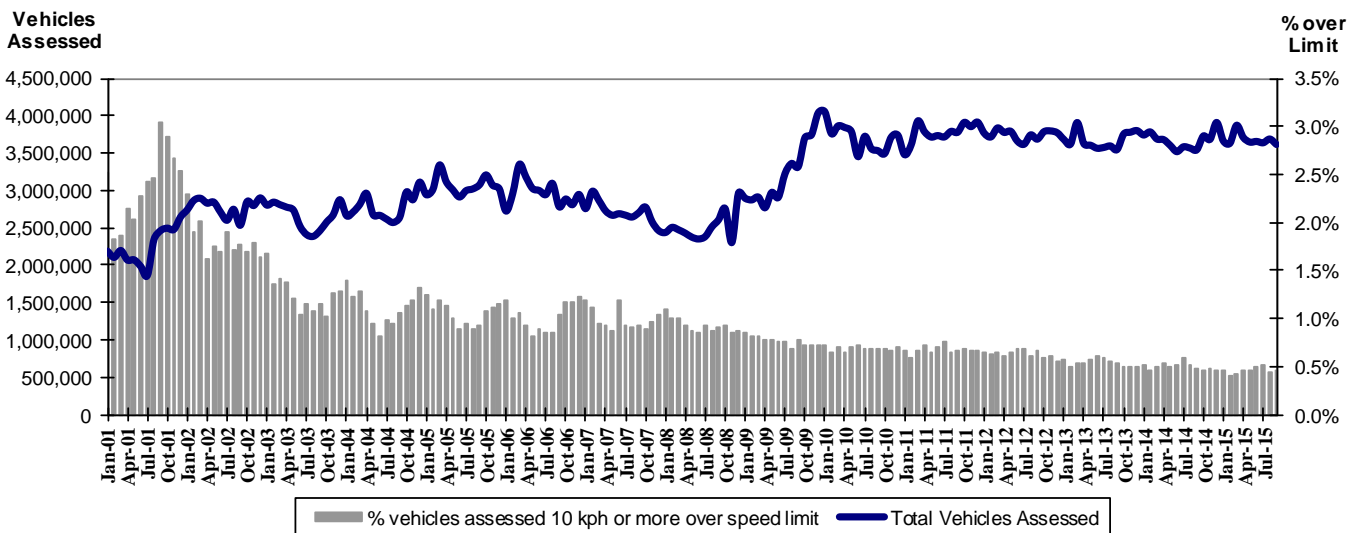
2014	2015											
	Oct	Nov	Dec	Jan	Feb	Mar	Apr	May	Jun	Jul	Aug	Sep
	35,422	32,416	28,732	37,982	31,250	31,144	33,790	30,434	33,386	36,437	31,001	29,975

Excessive Speed Infringements (ESI) Issued from Mobile Cameras (monthly totals)

Monthly Average = 303

2014	2015											
	Oct	Nov	Dec	Jan	Feb	Mar	Apr	May	Jun	Jul	Aug	Sep
	334	287	258	311	270	303	335	258	342	338	312	283

Notes: An ESI is defined as 25km/h over the speed limit except in a 110km/h zone where it is 20km/h over the limit.



Mobile Safety Cameras – Vehicles assessed and percentage of vehicles assessed 10km/h or more over speed limit per month

Explanations and References

Hi-AlcTime is those times of the day and week (*shaded* in the table below) when casualty crashes are ten times more likely to involve alcohol than casualty crashes at other (Lo-AlcTime) times.

	12am - 6am	6am - 8am	8am - 10am	10am - 2pm	2pm - 4pm	4pm - 6pm	6pm - 12pm
Monday							
Tuesday							
Wednesday							
Thursday							
Friday							
Saturday							
Sunday							

Police Service Areas align with Local Government Areas. Most Police Service Areas are equivalent to a single Local Government Area, while the remainder comprise two or three Local Government Areas.

Police Service Area	Local Government Area(s)	Police Service Area	Local Government Area(s)
BALLARAT	BALLARAT, PYRENEES	MAROONDAH	MAROONDAH
BANYULE	BANYULE	MELBOURNE	MELBOURNE
BASS COAST	BASS COAST, SOUTH GIPPSLAND	MELTON	MELTON
BAW BAW	BAWBAW	MILDURA	MILDURA
BENALLA	BENALLA, MANSFIELD, MURRINDINDI	MITCHELL	MITCHELL, STRATHBOGIE
BENDIGO	GREATER BENDIGO	MONASH	MONASH
BOROONDARA	BOROONDARA	MOONEE VALLEY	MOONEE VALLEY
BRIMBANK	BRIMBANK	MOORABOOL	GOLDEN PLAINS, HEPBURN, MOORABOOL
CAMPASPE	CAMPASPE	MORELAND	MORELAND
CARDINIA	CARDINIA	MORNINGTON PENINSULA	MORNINGTON PENINSULA
CASEY	CASEY	NILLUMBIK	NILLUMBIK
CENTRAL GOLDFIELDS	CENTRAL GOLDFIELDS, LODDON	NORTHERN GRAMPIANS	ARARAT, NORTHERN GRAMPIANS, YARRIAMIACK
GREATER DANDENONG	GREATER DANDENONG	PORT PHILLIP	PORT PHILLIP
DAREBIN	DAREBIN	SHEPPARTON	GREATER SHEPPARTON
EAST GIPPSLAND	EAST GIPPSLAND	SOUTHERN GRAMPIANS	GLENELG, SOUTHERN GRAMPIANS
FRANKSTON	FRANKSTON	STONNINGTON	STONNINGTON
GEELONG	GREATER GEELONG, QUEENSCLIFF	SURFCOAST	SURFCOAST, COLAC OTWAY
GLENEIRA	GLENEIRA, BAYSIDE	SWANHILL	BULOKE, GANNAWARRA, SWAN HILL
HOBSONS BAY	HOBSONSBAY	WANGARATTA	ALPINE, MOIRA, WANGARATTA
HORSHAM	HINDMARSH, HORSHAM, WESTWIMMERA	WARRNAMBOOL	CORANGAMITE, MOYNE, WARRNAMBOOL
HUME	HUME	WELLINGTON	WELLINGTON
KINGSTON	KINGSTON	WHITEHORSE	WHITEHORSE
KNOX	KNOX	WHITTLESEA	WHITTLESEA
LATROBE	LATROBE	WODONGA	INDIGO, TOWONG, WODONGA
MACEDON RANGES	MOUNT ALEXANDER, MACEDON RANGES	WYNDHAM	WYNDHAM
MANNINGHAM	MANNINGHAM	YARRA	YARRA
MARIBYRNONG	MARIBYRNONG	YARRA RANGES	YARRA RANGES

Useful Internet Sites

TAC Sites

- TAC Safety (Road Safety) www.tacsafety.com.au
- TAC How safe is your car www.howsafeisyourcar.com.au
- TAC Learners Log www.learnerslog.com.au
- TAC Motorcycle Safety Website www.spokes.com.au
- TAC Corporate site www.tac.vic.gov.au

Victorian Sites:

- VicRoads www.vicroads.vic.gov.au
- Victoria Police www.police.vic.gov.au
- Parliamentary Road Safety Committee www.parliament.vic.gov.au/rsc/
- ARRB Transport Research www.arrb.com.au
- RACV www.racv.com.au
- Monash University Accident Research Centre www.monash.edu.au/muarc
- Roadsafe www.roadsafe.org.au
- Cameras Save Lives www.camerassavelives.vic.gov.au

National and Interstate Sites:

- Australian Transport Safety Bureau www.atsb.gov.au
- Roads and Traffic Authority (NSW) www.rta.nsw.gov.au
- Queensland Transport - Road Safety transport.qld.gov.au/Home/Safety/Road
- Department of Transport (SA) www.transport.sa.gov.au/index.htm
- Main Roads Western Australia - Road Safety www.mrwa.wa.gov.au

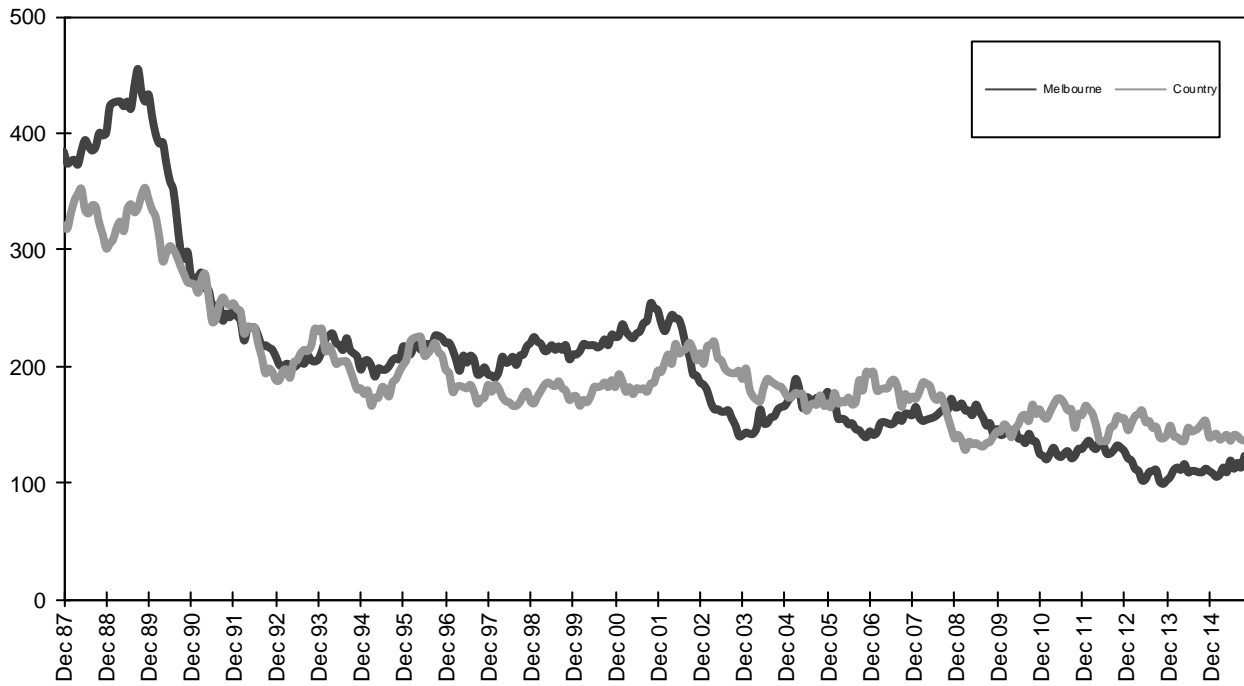
International Sites:

- National Highway Traffic Safety Admin (USA) www.nhtsa.dot.gov
- Swedish Road and Transport Institute (VTI) www.vti.se
- SWOV Institute for Road Safety Research www.swov.nl

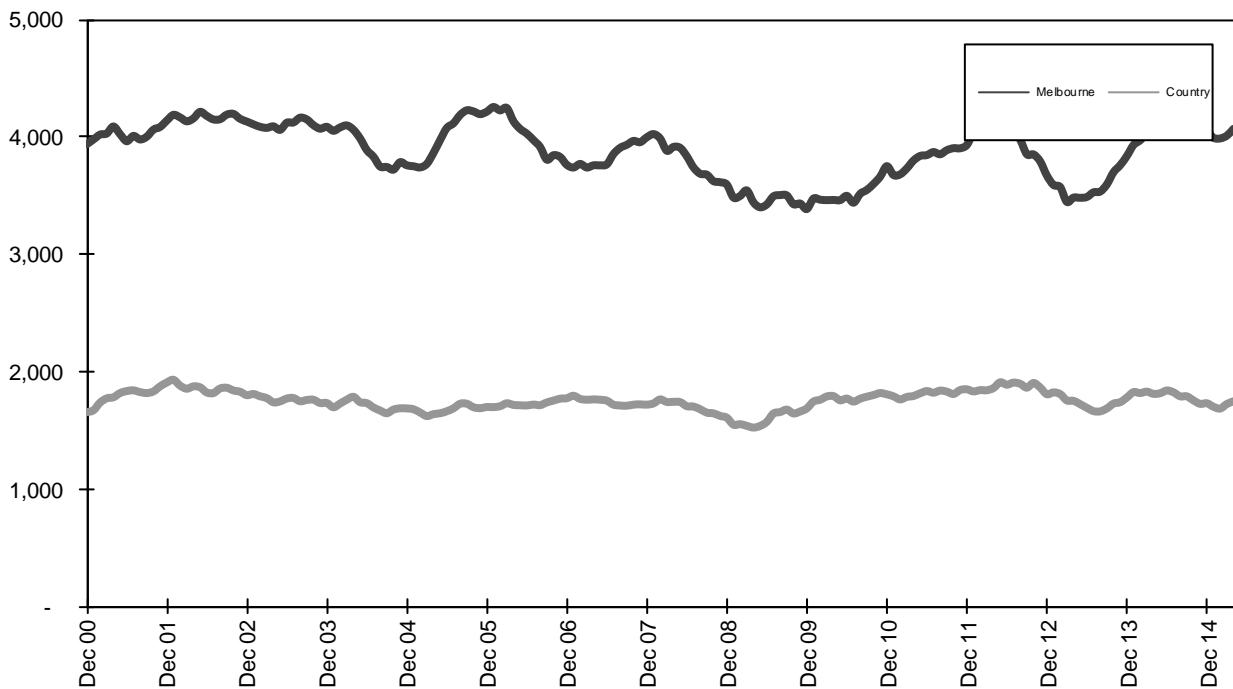
Related Sites:

- Australian Drug Foundation www.adf.org.au
- Amy Gillett Foundation www.amygillett.org.au

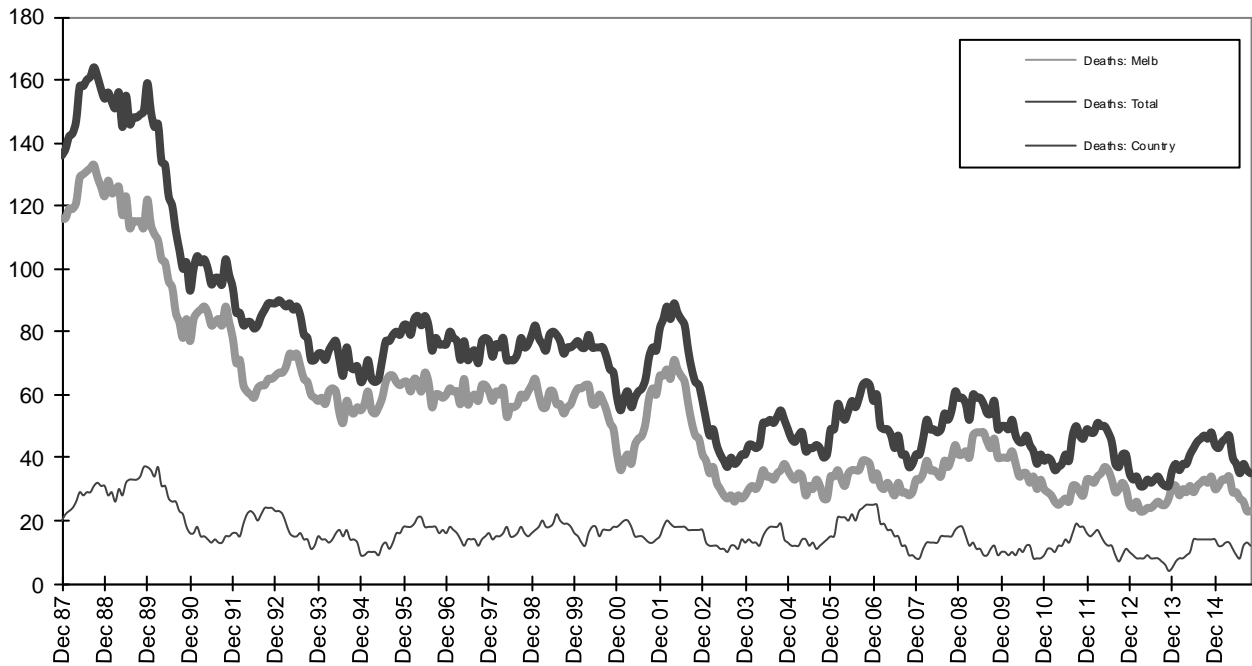
Figures



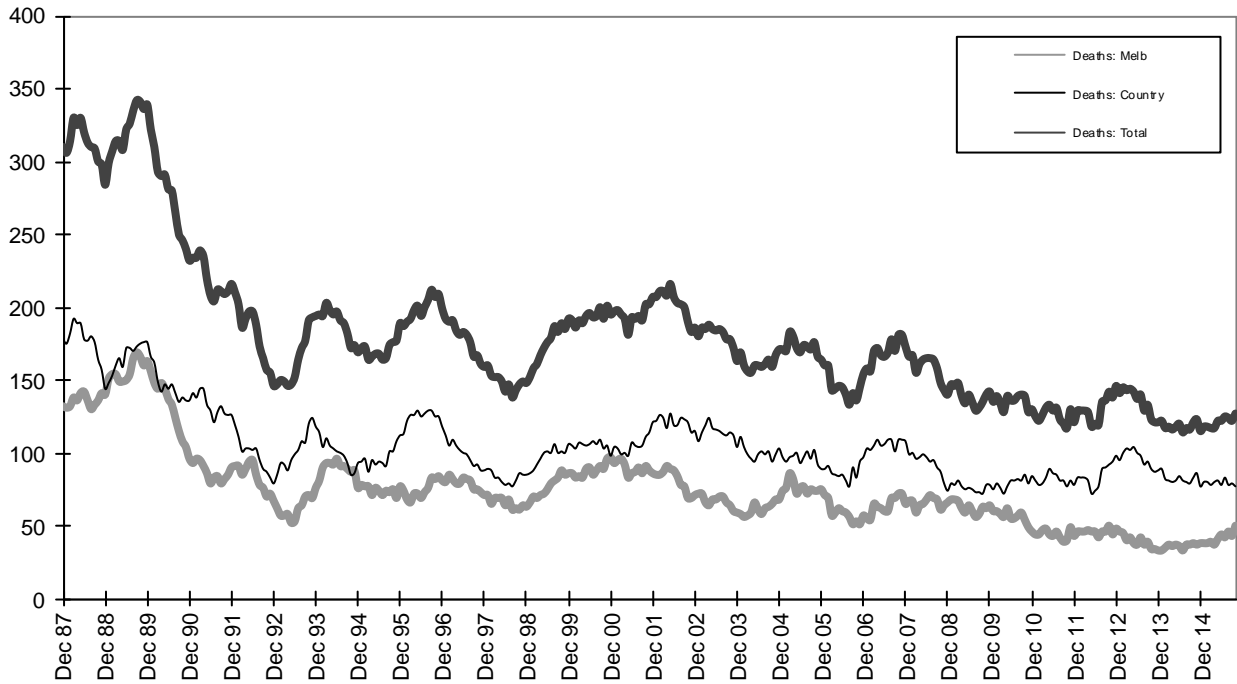
Graph 1a - Melbourne/country fatalities



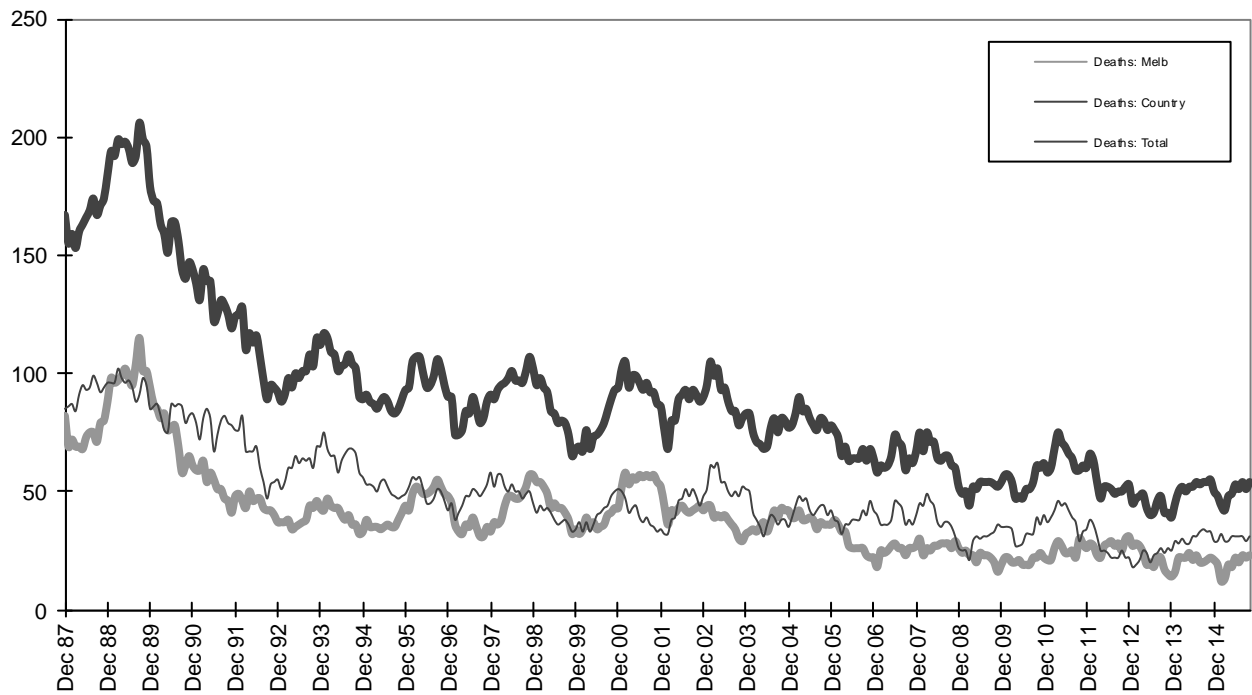
Graph 1b - Melbourne/country Claims involving an acute hospital admission



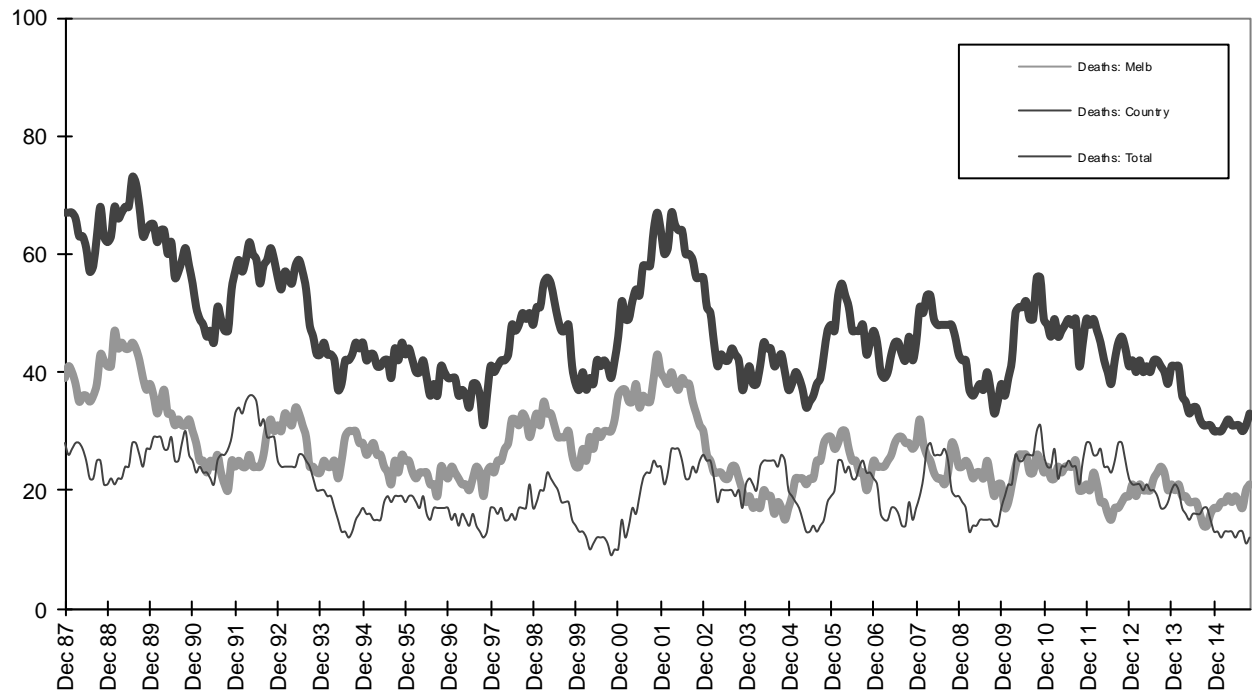
Graph 2a - Pedestrian fatalities (Melbourne/country)



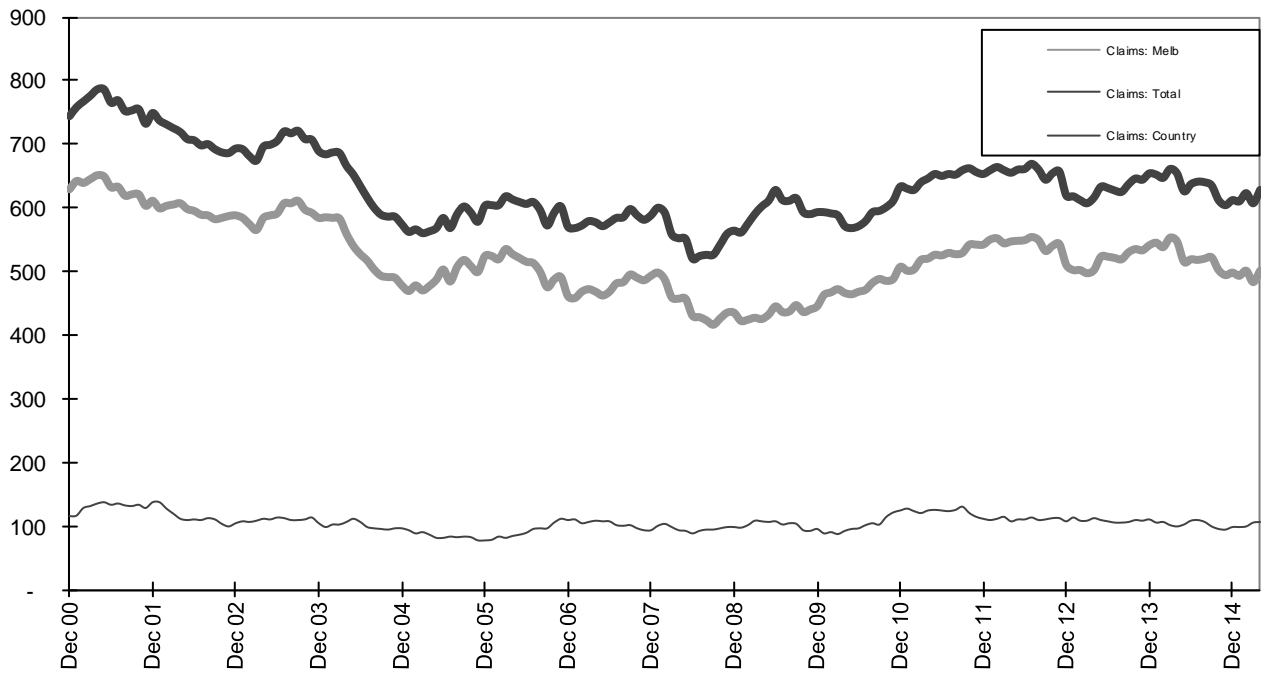
Graph 2b - Driver fatalities (Melbourne/country)



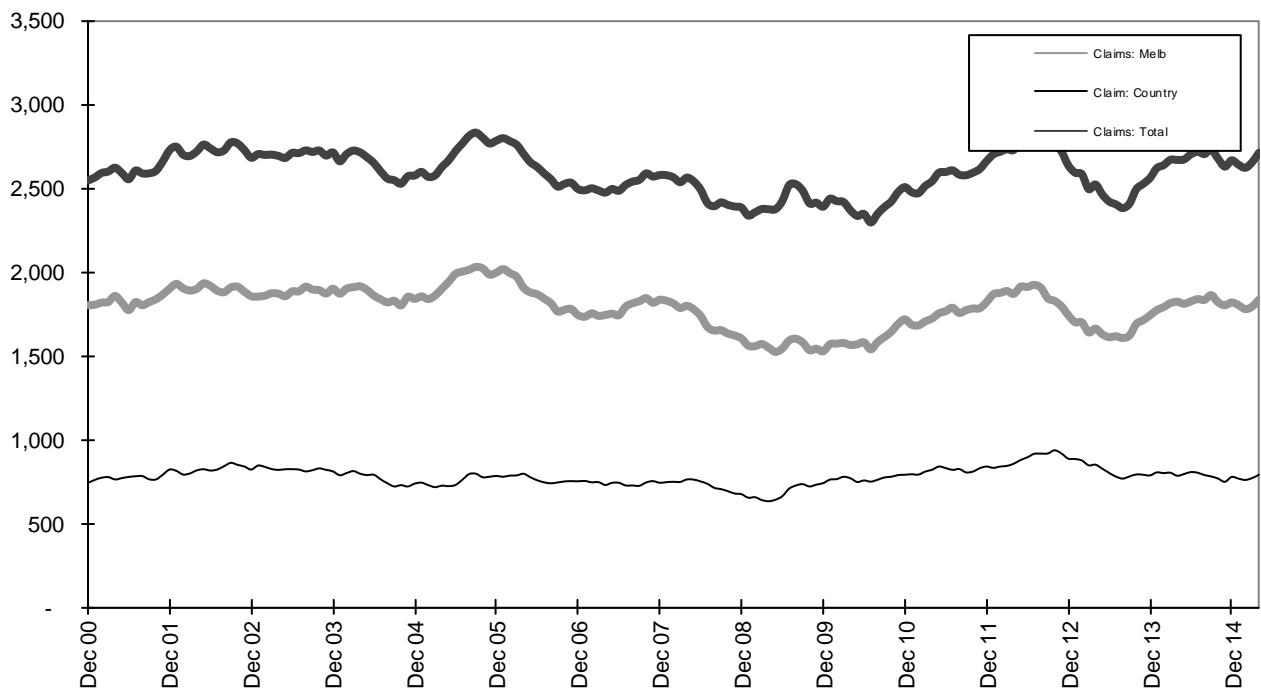
Graph 2c - Passenger fatalities (Melbourne/country)



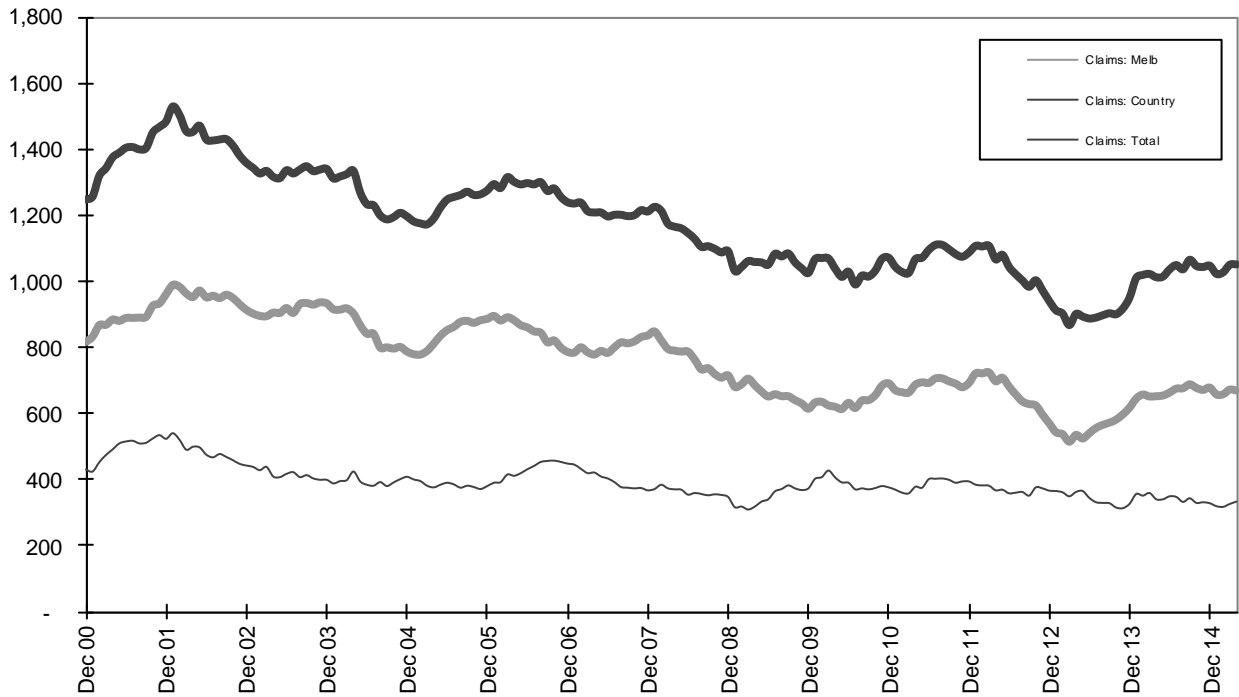
Graph 2d - Motorcyclist fatalities (Melbourne/country)



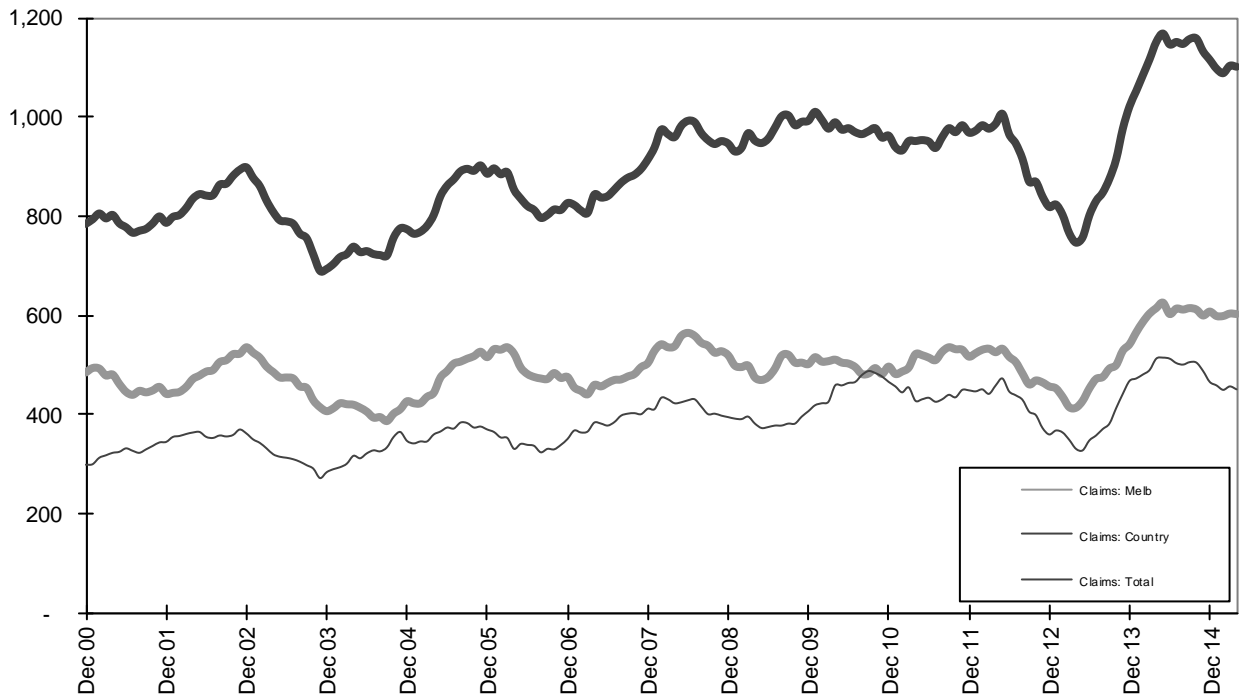
Graph 3a – Pedestrian Claims involving an acute hospital admission (Melbourne/country)



Graph 3b – Driver Claims involving an acute hospital admission (Melbourne/country)



Graph 3c - Passenger Claims involving an acute hospital admission (Melbourne/country)



Graph 3d - Motorcyclist Claims involving an acute hospital admission (Melbourne/country)