

# ROAD SAFETY STATISTICAL SUMMARY

## February 2016



TRANSPORT  
ACCIDENT  
COMMISSION

60 Brougham Street  
Geelong Vic 3220  
PO Box 742  
Geelong Vic 3220  
Ausdoc DX 216079 Geelong

Telephone 1300 654 329  
STD Toll Free 1800 332 556  
Fax: 03 9656 9300  
www.tac.vic.gov.au  
ABN 22 033 947 623



## Contents

Status Report.....	4
Fatalities.....	4
Claims involving an acute hospital admission* .....	5
Fatalities: 12 months to February 2016 .....	6
Claims involving acute hospitalisation over 14 days: 12 months to August 2015 (claim acceptance date).....	8
Claims involving an acute hospital admission: 12 months to August 2015 (claim acceptance date).....	10
Fatalities: Victorian monthly totals since 1951 .....	12
Fatalities by Week (2009 to 2016).....	13
The National Picture .....	14
Booze-Bus Random Breath Testing .....	15
Mobile Safety Camera Data .....	15
Explanations and References .....	16
Useful Internet Sites .....	17
Figures .....	18

### Note about the data in this report

- All data provided in this report is the data most recently available at time of production. Fatalities, breath-test data and safety camera data are updated to the end of report month. A 6-month lag applies to TAC claims data.
- Reported data will have one extra day of exposure for leap years.
- Data is subject to revision as additional information about known accidents/claims is received, and as new accident/claim reports are received and processed.

\*An acute hospital admission refers to a hospital admission that occurred within 7 days of accident.

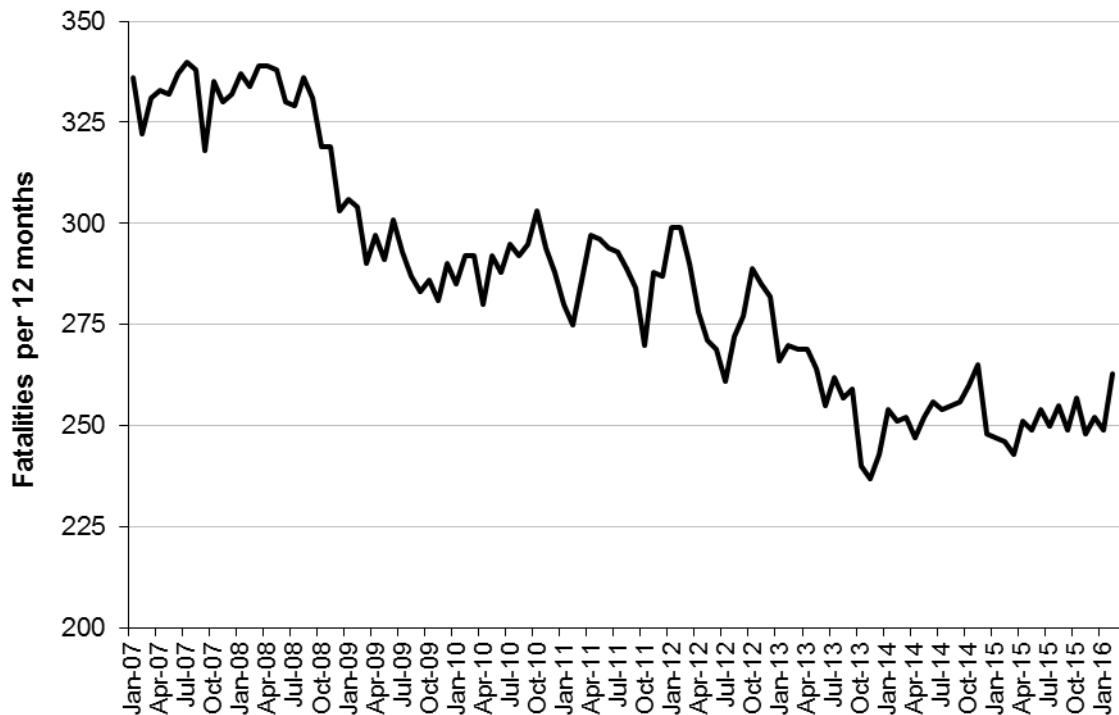
## Status Report

### Fatalities

- The rolling 12 month number of road fatalities in February 2016 stands at 263. The number of fatalities in 2015 stood at 246 (6.9% increase).
- 34 people were fatally injured in February 2016 on Victorian roads. This compares to 20 in February 2015.

### Fatalities (rolling 12 month, to end February 2016)

Category	2016	2015	2014	2016 v 2015		2016 v 2014		5 Year Av
<b>Fatal Injuries (Rolling 12 Month Total)</b>								
Fatal (to February)	263	246	251	+17	(+6.9%)	+12	(+5%)	313
per 10,000 veh	0.57	0.54	0.57	+0.03	(+6%)	0.00	(+0%)	0.60
per 100,000 pop	4.42	4.20	4.36	+0.22	(+5%)	+0.06	(+1%)	4.66
<b>Accidents (Rolling 12 Month Total)</b>								
Fatal (to February)	245	225	226	+20	(+9%)	+19	(+8%)	243
per 10,000 veh	0.50	0.50	0.51	0.00	(+0%)	-0.01	(-2%)	0.53
per 100,000 pop	3.85	3.84	3.93	0.01	(+0%)	-0.08	(-2%)	4.10

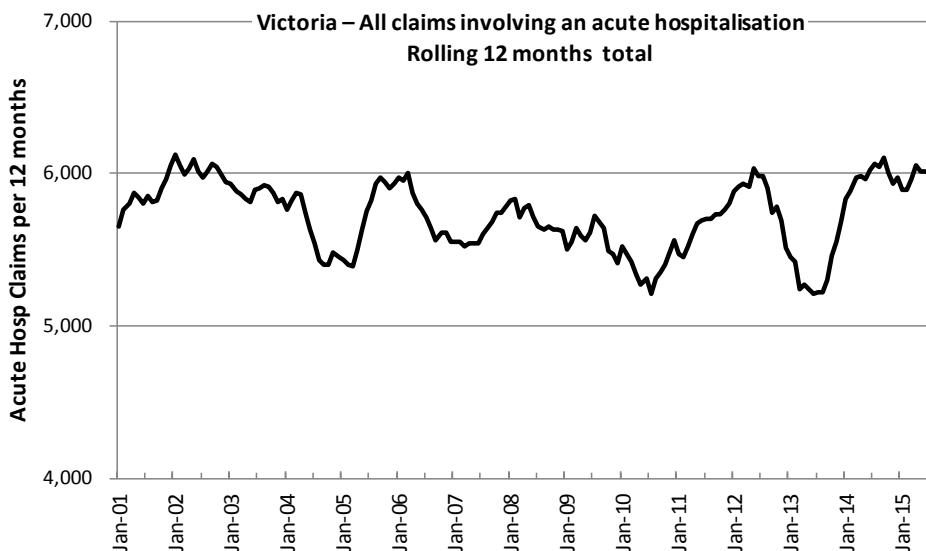
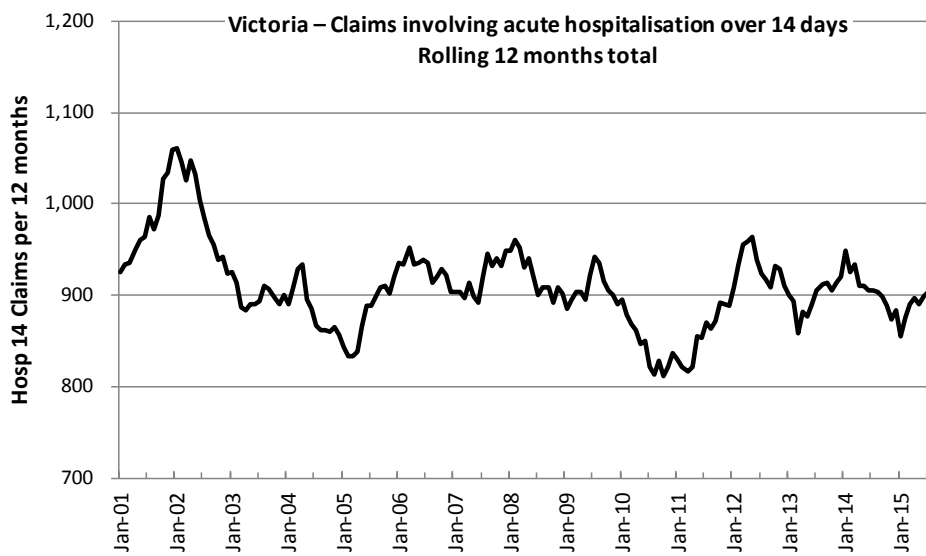


Victoria - Fatalities, rolling 12 months total

**Claims involving an acute hospital admission\***

(by claim acceptance date – rolling 12 month, to midnight 31 August 2015)

Category	2015	2014	2013	2015 v 2014		2015 v 2013		5 Year Av
<b>Claims involving an acute hospitalisation over 14 days (Rolling 12 Month Total)</b>								
Claims (to August)	925	903	912	+22	(+2%)	+13	(+1%)	904
per 100,000 pop	15.7	15.6	16.0	+0.1	(+1%)	-0.3	(-2%)	15.8
per 10,000 veh	2.0	2.0	2.1	0.0	(+0%)	-0.1	(-5%)	2.1
<b>All claims involving an acute hospitalisation (Rolling 12 Month Total)</b>								
Claims (to August)	6,007	6,041	5,220	-34	(-1%)	+787	(+15%)	5,775
per 100,000 pop	101.7	104.0	91.6	-2.3	(-2%)	+10.1	(+11%)	101.3
per 10,000 veh	13.1	13.5	11.9	-0.4	(-3%)	+1.2	(+10%)	13.2



\*An acute hospital admission refers to a hospital admission that occurred within 7 days of accident.

## Fatalities: 12 months to February 2016

Category	2016	2015	2014	2016 v 2015		2016 v 2014		5 Year Av
<b>Overview</b>								
Fatalities	263	246	251	+17	(+7%)	+12	(+5%)	313
Accidents	245	225	226	+20	(+9%)	+19	(+8%)	243
<b>Sex</b>								
Female	75	62	84	+13	(+21%)	-9	(-11%)	78
Male	188	184	167	+4	(+2%)	+21	(+13%)	188
<b>Roaduser</b>								
Bicyclist	11	10	7	+1	(+10%)	+4	(+57%)	8
Driver	122	117	117	5	(+4%)	+5	(+4%)	126
Motorcyclist	43	30	41	+13	(+43%)	+2	(+5%)	41
Passenger	52	44	50	+8	(+18%)	+2	(+4%)	51
Pedestrian	35	45	36	-10	(-22%)	-1	(-3%)	40
<b>Location</b>								
Melbourne	129	105	111	+24	(+23%)	+18	(+16%)	120
Rural Victoria	134	141	140	-7	(-5%)	-6	(-4%)	146
<b>Agegroup</b>								
0-4	1	4	1	-3	(-75%)	0	(0%)	3
5-15	4	5	10	-1	(-20%)	-6	(-60%)	7
16-17	16	6	3	+10	(+167%)	+13	(+433%)	8
18-20	31	14	17	+17	(+121%)	+14	(+82%)	24
21-25	18	34	22	-16	(-47%)	-4	(-18%)	29
26-29	22	21	17	+1	(+5%)	+5	(+29%)	19
30-39	28	37	34	-9	(-24%)	-6	(-18%)	36
40-49	40	26	32	+14	(+54%)	+8	(+25%)	33
50-59	31	28	30	+3	(+11%)	+1	(+3%)	31
60-69	24	30	28	-6	(-20%)	-4	(-14%)	29
70+	48	41	56	+7	(+17%)	-8	(-14%)	47
<b>Altime</b>								
High (Melb)	71	56	58	+15	(+27%)	+13	(+22%)	64
High (Rural)	63	61	53	+2	(+3%)	+10	(+19%)	65
High (Vic)	134	117	111	+17	(+15%)	+23	(+21%)	129
Low (Melb)	58	49	53	+9	(+18%)	+5	(+9%)	56
Low (Rural)	71	80	87	-9	(-11%)	-16	(-18%)	80
Low (Vic)	129	129	140	0	(0%)	-11	(-8%)	137
<b>Accident Type</b>								
<b>Intersection</b>								
Adjacent direction	33	30	40	+3	(+10%)	-7	(-18%)	32
Opposing direction	12	8	4	+4	(+50%)	+8	(+200%)	7
<b>Mid-block/other</b>								
Head on	41	34	42	+7	(+21%)	-1	(-2%)	40
Same direction	17	10	16	+7	(+70%)	+1	(+6%)	14
Manoeuvre/o'taking	19	14	9	+5	(+36%)	+10	(+111%)	15
On path	5	10	1	-5	(-50%)	+4	(+400%)	5
Single vehicle	99	89	96	+10	(+11%)	+3	(+3%)	107
Other (incl peds)	37	51	43	-14	(-27%)	-6	(-14%)	46

## Fatalities: 12 months to February 2016 – Continued

Category	2016	2015	2014	2016 v 2015		2016 v 2014		5 Year Av
<b>Police Service Area (based on Local Government Area (see p.13))</b>								
BALLARAT	3	4	7	-1	(-25%)	-4	(-57%)	5
BANYULE	2	1	3	+1	(+100%)	-1	(-33%)	2
BASS COAST	6	6	9	0	(0%)	-3	(-33%)	7
BAW BAW	2	4	5	-2	(-50%)	-3	(-60%)	5
BENALLA	13	7	12	+6	(+86%)	+1	(+8%)	10
BENDIGO	2	7	3	-5	(-71%)	-1	(-33%)	6
BOROONDARA	2	3	5	-1	(-33%)	-3	(-60%)	3
BRIMBANK	8	4	7	+4	(+100%)	+1	(+14%)	8
CAMPASPE	4	8	2	-4	(-50%)	+2	(+100%)	5
CARDINIA	11	4	5	+7	(+175%)	+6	(+120%)	7
CASEY	6	4	6	+2	(+50%)	0	(0%)	5
CENTRAL GOLDFIELDS	3	2	3	+1	(+50%)	0	(0%)	3
DAREBIN	5	1	2	+4	(+400%)	+3	(+150%)	3
EAST GIPPSLAND	11	6	1	+5	(+83%)	+10	(+1000%)	7
FRANKSTON	3	5	1	-2	(-40%)	+2	(+200%)	3
GEELONG	3	6	5	-3	(-50%)	-2	(-40%)	8
GLEN EIRA	3	5	5	-2	(-40%)	-2	(-40%)	5
GREATER DANDENONG	7	5	3	+2	(+40%)	+4	(+133%)	5
HOBSONS BAY	5	1	3	+4	(+400%)	+2	(+67%)	2
HORSHAM	6	2	4	+4	(+200%)	+2	(+50%)	4
HUME	7	5	3	+2	(+40%)	+4	(+133%)	7
KINGSTON	5	3	7	+2	(+67%)	-2	(-29%)	5
KNOX	6	5	4	+1	(+20%)	+2	(+50%)	4
LA TROBE	3	5	6	-2	(-40%)	-3	(-50%)	5
MACEDON RANGES	9	10	5	-1	(-10%)	+4	(+80%)	7
MANNINGHAM	1	1	0	0	(0%)	+1		1
MARIBYRNONG	4	0	3	+4		+1	(+33%)	2
MAROONDAH	1	2	0	-1	(-50%)	+1		2
MELBOURNE	3	6	3	-3	(-50%)	0	(0%)	4
MELTON	4	5	9	-1	(-20%)	-5	(-56%)	6
MILDURA	5	1	6	+4	(+400%)	-1	(-17%)	3
MITCHELL	10	6	9	+4	(+67%)	+1	(+11%)	8
MONASH	3	1	4	+2	(+200%)	-1	(-25%)	3
MOONEE VALLEY	0	5	3	-5	(-100%)	-3	(-100%)	2
MOORABOOL	6	5	8	+1	(+20%)	-2	(-25%)	8
MORELAND	1	7	2	-6	(-86%)	-1	(-50%)	3
MORNINGTON PENINSULA	10	8	5	+2	(+25%)	+5	(+100%)	7
NILLUMBIK	2	2	0	0	(0%)	+2		2
NORTHERN GRAMPPIANS	5	3	7	+2	(+67%)	-2	(-29%)	5
PORT PHILLIP	2	1	4	+1	(+100%)	-2	(-50%)	2
SHEPPARTON	7	4	4	+3	(+75%)	+3	(+75%)	6
SOUTHERN GRAMPPIANS	5	9	0	-4	(-44%)	+5		5
STONNINGTON	3	3	4	0	(0%)	-1	(-25%)	3
SURF COAST	6	6	4	0	(0%)	+2	(+50%)	6
SWAN HILL	4	4	9	0	(0%)	-5	(-56%)	6
WANGARATTA	8	11	8	-3	(-27%)	0	(0%)	10
WARRNAMBOOL	5	14	11	-9	(-64%)	-6	(-55%)	8
WELLINGTON	3	4	6	-1	(-25%)	-3	(-50%)	5
WHITEHORSE	3	4	2	-1	(-25%)	+1	(+50%)	3
WHITTLESEA	3	6	2	-3	(-50%)	+1	(+50%)	5
WODONGA	4	7	6	-3	(-43%)	-2	(-33%)	4
WYNDHAM	8	5	3	+3	(+60%)	+5	(+167%)	7
YARRA	1	1	1	0	(0%)	0	(0%)	1
YARRA RANGES	11	2	12	+9	(+450%)	-1	(-8%)	8

## Claims involving acute hospitalisation over 14 days: 12 months to August 2015 (claim acceptance date)

Category	2015	2014	2013	2015 v 2014		2015 v 2013		5 Year Av
<b>Overview</b>								
Claims	925	903	912	+22	(+2%)	+13	(+1%)	904
<b>Sex</b>								
Female	398	360	385	+38	(+11%)	+13	(+3%)	375
Male	526	542	526	-16	(-3%)	0	(0%)	529
<b>Roaduser</b>								
Driver	348	377	378	-29	(-8%)	-30	(-8%)	357
Passenger	149	128	152	+21	(+16%)	-3	(-2%)	144
Motorcyclist	181	158	137	+23	(+15%)	+44	(+32%)	162
Pedestrian	183	183	196	0	(0%)	-13	(-7%)	185
Cyclist	38	35	30	+3	(+9%)	+8	(+27%)	36
Train/Tram	10	8	5	+2	(+25%)	+5	(+100%)	7
<b>Location</b>								
Melbourne	604	555	591	+49	(+9%)	+13	(+2%)	581
Rural Victoria	295	328	319	-33	(-10%)	-24	(-8%)	312
<b>Agegroup</b>								
0-4	4	1	2	+3	(+300%)	+2	(+100%)	3
5-15	19	14	8	+5	(+36%)	+11	(+138%)	14
16-17	13	13	15	0	(0%)	-2	(-13%)	17
18-20	46	54	67	-8	(-15%)	-21	(-31%)	55
21-25	87	84	77	+3	(+4%)	+10	(+13%)	84
26-29	57	47	40	+10	(+21%)	+17	(+43%)	52
30-39	92	117	111	-25	(-21%)	-19	(-17%)	108
40-49	117	112	119	+5	(+4%)	-2	(-2%)	117
50-59	117	112	97	+5	(+4%)	+20	(+21%)	106
60-69	110	96	114	+14	(+15%)	-4	(-4%)	107
70+	263	253	262	+10	(+4%)	+1	(+0%)	242
<b>Alctime</b>								
High (Melb)	235	214	266	+21	(+10%)	-31	(-12%)	246
High (Rural)	117	128	118	-11	(-9%)	-1	(-1%)	123
High (Vic)	352	342	384	+10	(+3%)	-32	(-8%)	369
Low (Melb)	369	341	325	+28	(+8%)	+44	(+14%)	335
Low (Rural)	178	200	201	-22	(-11%)	-23	(-11%)	189
Low (Vic)	547	541	526	+6	(+1%)	+21	(+4%)	524
<b>Accident Type</b>								
<b>Intersection</b>								
Adjacent direction	109	94	135	+15	(+16%)	-26	(-19%)	114
Opposing direction	56	63	62	-7	(-11%)	-6	(-10%)	63
<b>Mid-block/other</b>								
Head on	83	90	80	-7	(-8%)	+3	(+4%)	84
Same direction	94	65	83	+29	(+45%)	+11	(+13%)	84
Manoeuvre/o'taking	52	63	60	-11	(-17%)	-8	(-13%)	56
On path	29	27	20	+2	(+7%)	+9	(+45%)	23
Single vehicle	273	276	225	-3	(-1%)	+48	(+21%)	254
Other (incl peds)	229	225	247	+4	(+2%)	-18	(-7%)	227

Note: Excludes rejected claims and claims for interstate crashes.



**Claims involving acute hospitalisation over 14 days: 12 months to August 2015 (claim acceptance date) – Continued**

Category	2015	2014	2013	2015 v 2013		2015 v 2014		5 Year Av
<b>Police Service Area (based on Local Government Area (see p.13))</b>								
BALLARAT	16	22	16	-6	(-27%)	0	(0%)	17
BANYULE	10	9	11	+1	(+11%)	-1	(-9%)	10
BASS COAST	19	20	14	-1	(-5%)	+5	(+36%)	17
BAW BAW	8	8	9	0	(0%)	-1	(-11%)	10
BENALLA	22	21	18	+1	(+5%)	+4	(+22%)	21
BENDIGO	14	11	18	+3	(+27%)	-4	(-22%)	16
BOROONDARA	24	25	18	-1	(-4%)	+6	(+33%)	23
BRIMBANK	33	18	19	+15	(+83%)	+14	(+74%)	25
CAMPASPE	9	8	7	+1	(+13%)	+2	(+29%)	7
CARDINIA	15	11	15	+4	(+36%)	0	(0%)	15
CASEY	33	30	28	+3	(+10%)	+5	(+18%)	28
CENTRAL GOLDFIELDS	2	7	8	-5	(-71%)	-6	(-75%)	6
DAREBIN	16	13	21	+3	(+23%)	-5	(-24%)	16
EAST GIPPSLAND	9	9	5	0	(0%)	+4	(+80%)	11
FRANKSTON	20	11	12	+9	(+82%)	+8	(+67%)	15
GEELONG	27	25	37	+2	(+8%)	-10	(-27%)	29
GLEN EIRA	22	28	33	-6	(-21%)	-11	(-33%)	29
GREATER DANDENONG	16	30	28	-14	(-47%)	-12	(-43%)	26
HOBSONS BAY	11	10	12	+1	(+10%)	-1	(-8%)	10
HORSHAM	4	7	5	-3	(-43%)	-1	(-20%)	7
HUME	36	15	33	+21	(+140%)	+3	(+9%)	27
KINGSTON	26	23	24	+3	(+13%)	+2	(+8%)	22
KNOX	13	21	16	-8	(-38%)	-3	(-19%)	17
LA TROBE	14	9	15	+5	(+56%)	-1	(-7%)	15
MACEDON RANGES	11	27	17	-16	(-59%)	-6	(-35%)	17
MANNINGHAM	9	14	14	-5	(-36%)	-5	(-36%)	14
MARIBYRNONG	13	5	14	+8	(+160%)	-1	(-7%)	13
MAROONDAH	5	5	7	0	(0%)	-2	(-29%)	8
MELBOURNE	35	27	35	+8	(+30%)	0	(0%)	31
MELTON	17	11	17	+6	(+55%)	0	(0%)	14
MILDURA	6	9	6	-3	(-33%)	0	(0%)	8
MITCHELL	14	23	20	-9	(-39%)	-6	(-30%)	18
MONASH	23	24	21	-1	(-4%)	+2	(+10%)	22
MOONEE VALLEY	21	22	14	-1	(-5%)	+7	(+50%)	19
MOORABOOL	20	16	17	+4	(+25%)	+3	(+18%)	15
MORELAND	28	24	36	+4	(+17%)	-8	(-22%)	27
MORNINGTON PENINSULA	23	20	32	+3	(+15%)	-9	(-28%)	28
NILLUMBIK	11	6	8	+5	(+83%)	+3	(+38%)	7
NORTHERN GRAMPPIANS	13	13	12	0	(0%)	+1	(+8%)	10
PORT PHILLIP	16	22	7	-6	(-27%)	+9	(+129%)	14
SHEPPARTON	10	10	17	0	(0%)	-7	(-41%)	11
SOUTHERN GRAMPPIANS	9	11	8	-2	(-18%)	+1	(+13%)	9
STONNINGTON	14	16	12	-2	(-13%)	+2	(+17%)	16
SURF COAST	12	14	12	-2	(-14%)	0	(0%)	12
SWAN HILL	13	9	6	+4	(+44%)	+7	(+117%)	8
WANGARATTA	17	10	21	+7	(+70%)	-4	(-19%)	16
WARRNAMBOOL	9	15	13	-6	(-40%)	-4	(-31%)	13
WELLINGTON	7	12	8	-5	(-42%)	-1	(-13%)	9
WHITEHORSE	18	22	11	-4	(-18%)	+7	(+64%)	19
WHITTLESEA	27	19	23	+8	(+42%)	+4	(+17%)	22
WODONGA	10	12	10	-2	(-17%)	0	(0%)	10
WYNDHAM	21	29	22	-8	(-28%)	-1	(-5%)	22
YARRA	13	13	15	0	(0%)	-2	(-13%)	13
YARRA RANGES	35	32	33	+3	(+9%)	+2	(+6%)	31

Note: excludes rejected claims and claims for interstate crashes

## Claims involving an acute hospital admission: 12 months to August 2015 (claim acceptance date)

Category	2015	2014	2013	2015 v 2014		2015 v 2013		5 Year Av
<b>Overview</b>								
Claims	6,007	6,041	5,220	-34	(-1%)	+787	(+15%)	5,775
<b>Sex</b>								
Female	2,591	2,539	2,129	+52	(+2%)	+462	(+22%)	2,451
Male	3,408	3,496	3,092	-88	(-3%)	+316	(+10%)	3,321
<b>Roaduser</b>								
Driver	2,753	2,702	2,379	+51	(+2%)	+374	(+16%)	2,647
Passenger	1,016	1,036	897	-20	(-2%)	+119	(+13%)	1,012
Motorcyclist	1,082	1,147	849	-65	(-6%)	+233	(+27%)	990
Pedestrian	604	640	627	-36	(-6%)	-23	(-4%)	637
Cyclist	390	386	360	+4	(+1%)	+30	(+8%)	367
Train/Tram	29	35	26	-6	(-17%)	+3	(+12%)	27
<b>Location</b>								
Melbourne	4,017	4,069	3,534	-52	(-1%)	+483	(+14%)	3,889
Rural Victoria	1,752	1,789	1,662	-37	(-2%)	+90	(+5%)	1,787
<b>Agegroup</b>								
0-4	44	52	50	-8	(-15%)	-6	(-12%)	49
5-15	222	170	184	+52	(+31%)	+38	(+21%)	193
16-17	105	98	88	+7	(+7%)	+17	(+19%)	110
18-20	461	521	459	-60	(-12%)	+2	(+0%)	509
21-25	704	789	613	-85	(-11%)	+91	(+15%)	719
26-29	479	487	376	-8	(-2%)	+103	(+27%)	441
30-39	946	908	776	+38	(+4%)	+170	(+22%)	888
40-49	884	901	803	-17	(-2%)	+81	(+10%)	863
50-59	790	758	634	+32	(+4%)	+156	(+25%)	726
60-69	554	545	475	+9	(+2%)	+79	(+17%)	522
70+	818	813	765	+5	(+1%)	+53	(+7%)	756
<b>Alcime</b>								
High (Melb)	1,685	1,704	1,548	-19	(-1%)	+137	(+9%)	1,708
High (Rural)	724	706	664	+18	(+3%)	+60	(+9%)	744
High (Vic)	2,409	2,410	2,212	-1	(-0%)	+197	(+9%)	2,451
Low (Melb)	2,332	2,365	1,986	-33	(-1%)	+346	(+17%)	2,182
Low (Rural)	1,028	1,083	998	-55	(-5%)	+30	(+3%)	1,043
Low (Vic)	3,360	3,448	2,984	-88	(-3%)	+376	(+13%)	3,225
<b>Accident Type</b>								
<b>Intersection</b>								
Adjacent direction	779	802	754	-23	(-3%)	+25	(+3%)	821
Opposing direction	504	512	485	-8	(-2%)	+19	(+4%)	493
<b>Mid-block/other</b>								
Head on	281	341	291	-60	(-18%)	-10	(-3%)	319
Same direction	923	863	754	+60	(+7%)	+169	(+22%)	886
Manoeuvre/o'taking	332	331	309	+1	(+0%)	+23	(+7%)	323
On path	295	284	217	+11	(+4%)	+78	(+36%)	244
Single vehicle	1,725	1,693	1,398	+32	(+2%)	+327	(+23%)	1,604
Other (incl peds)	1,168	1,216	1,015	-48	(-4%)	+153	(+15%)	1,085

Note: excludes rejected claims and claims for interstate crashes

Claims involving an acute hospital admission: 12 months to August 2015 (claim acceptance date) – Continued

Category	2015	2014	2013	2015 v 2014		2015 v 2013		5 Year Av
<b>Police Service Area (based on Local Government Area (see p.13))</b>								
BALLARAT	80	92	99	-12	(-13%)	-19	(-19%)	95
BANYULE	47	67	52	-20	(-30%)	-5	(-10%)	59
BASS COAST	87	89	74	-2	(-2%)	+13	(+18%)	82
BAW BAW	46	68	58	-22	(-32%)	-12	(-21%)	59
BENALLA	111	105	107	+6	(+6%)	+4	(+4%)	113
BENDIGO	105	74	89	+31	(+42%)	+16	(+18%)	98
BOROONDARA	132	134	135	-2	(-1%)	-3	(-2%)	134
BRIMBANK	147	134	136	+13	(+10%)	+11	(+8%)	150
CAMPASPE	38	38	32	0	(0%)	+6	(+19%)	37
CARDINIA	108	119	81	-11	(-9%)	+27	(+33%)	101
CASEY	291	268	204	+23	(+9%)	+87	(+43%)	248
CENTRAL GOLDFIELDS	24	32	27	-8	(-25%)	-3	(-11%)	26
DAREBIN	89	96	95	-7	(-7%)	-6	(-6%)	96
EAST GIPPSLAND	68	49	58	+19	(+39%)	+10	(+17%)	65
FRANKSTON	137	113	104	+24	(+21%)	+33	(+32%)	130
GEELONG	229	227	190	+2	(+1%)	+39	(+21%)	226
GLEN EIRA	177	188	174	-11	(-6%)	+3	(+2%)	178
GREATER DANDENONG	228	291	199	-63	(-22%)	+29	(+15%)	227
HOBSONS BAY	66	66	51	0	(0%)	+15	(+29%)	62
HORSHAM	34	35	29	-1	(-3%)	+5	(+17%)	36
HUME	185	183	149	+2	(+1%)	+36	(+24%)	161
KINGSTON	134	155	129	-21	(-14%)	+5	(+4%)	136
KNOX	102	126	83	-24	(-19%)	+19	(+23%)	112
LA TROBE	53	62	66	-9	(-15%)	-13	(-20%)	64
MACEDON RANGES	95	100	92	-5	(-5%)	+3	(+3%)	89
MANNINGHAM	76	59	75	+17	(+29%)	+1	(+1%)	69
MARIBY RNONG	74	66	75	+8	(+12%)	-1	(-1%)	79
MAROONDAH	57	56	47	+1	(+2%)	+10	(+21%)	60
MELBOURNE	232	251	240	-19	(-8%)	-8	(-3%)	241
MELTON	87	66	77	+21	(+32%)	+10	(+13%)	75
MILDURA	24	44	32	-20	(-45%)	-8	(-25%)	36
MITCHELL	103	107	86	-4	(-4%)	+17	(+20%)	92
MONASH	196	216	159	-20	(-9%)	+37	(+23%)	182
MOONEE VALLEY	122	122	105	0	(0%)	+17	(+16%)	112
MOORABOOL	96	105	110	-9	(-9%)	-14	(-13%)	100
MORELAND	149	150	138	-1	(-1%)	+11	(+8%)	146
MORNINGTON PENINSUL	155	137	124	+18	(+13%)	+31	(+25%)	155
NILLUMBIK	45	25	39	+20	(+80%)	+6	(+15%)	39
NORTHERN GRAMPIANS	53	39	43	+14	(+36%)	+10	(+23%)	41
PORT PHILLIP	143	155	100	-12	(-8%)	+43	(+43%)	125
SHEPPARTON	78	66	56	+12	(+18%)	+22	(+39%)	67
SOUTHERN GRAMPIANS	37	51	48	-14	(-27%)	-11	(-23%)	46
STONNINGTON	146	139	129	+7	(+5%)	+17	(+13%)	132
SURF COAST	73	74	52	-1	(-1%)	+21	(+40%)	69
SWAN HILL	40	43	30	-3	(-7%)	+10	(+33%)	37
WANGARATTA	94	95	99	-1	(-1%)	-5	(-5%)	97
WARRNAMBOOL	57	71	61	-14	(-20%)	-4	(-7%)	76
WELLINGTON	72	74	56	-2	(-3%)	+16	(+29%)	73
WHITEHORSE	95	114	95	-19	(-17%)	0	(0%)	112
WHITTLESEA	151	137	145	+14	(+10%)	+6	(+4%)	138
WODONGA	55	49	68	+6	(+12%)	-13	(-19%)	61
WYNDHAM	148	179	132	-31	(-17%)	+16	(+12%)	149
YARRA	116	106	95	+10	(+9%)	+21	(+22%)	106
YARRA RANGES	182	151	167	+31	(+21%)	+15	(+9%)	175

Note: excludes rejected claims and claims for interstate crashes

**Fatalities: Victorian monthly totals since 1951**

Year	Jan	Feb	Mar	Apr	May	Jun	Jul	Aug	Sep	Oct	Nov	Dec	Totals
1951							61	59	52	38	29	41	
1952	45	40	54	61	54	69	67	55	44	44	31	20	584
1953	23	28	54	58	49	42	50	37	44	27	36	32	480
1954	44	42	28	60	55	36	63	33	25	52	30	41	509
1955	44	36	45	55	48	56	64	44	44	32	40	40	548
1956	34	48	51	67	53	65	71	47	39	39	44	48	606
1957	50	41	46	58	52	54	57	53	51	46	32	49	589
1958	50	38	42	58	54	41	54	53	57	40	57	52	596
1959	50	57	61	50	75	55	42	48	52	55	63	63	671
1960	49	53	57	76	70	70	67	62	61	77	52	66	760
1961	63	57	68	74	58	68	78	82	59	62	60	65	794
1962	65	41	76	78	72	80	70	77	62	53	64	70	808
1963	67	56	65	85	66	68	77	55	55	58	61	67	780
1964	73	71	78	71	83	89	80	89	67	66	62	75	904
1965	63	64	86	88	80	87	79	69	81	77	68	87	929
1966	75	59	75	103	74	86	87	80	75	66	90	85	955
1967	61	79	91	97	81	71	59	67	70	68	60	83	887
1968	70	78	86	78	73	76	73	77	72	80	81	105	949
1969	79	68	79	87	86	77	87	83	87	83	94	101	1,011
1970	85	84	106	80	87	88	110	106	78	95	68	74	1,061
1971	83	75	77	68	76	86	85	72	78	73	74	76	923
1972	61	62	75	82	75	71	98	85	83	62	80	81	915
1973	75	75	95	85	64	66	61	85	89	88	66	86	935
1974	56	62	81	60	70	73	67	62	53	70	80	72	806
1975	67	65	87	73	97	94	57	75	69	66	71	89	910
1976	79	78	88	78	69	79	60	70	82	78	77	100	938
1977	65	71	89	79	65	79	70	91	68	74	96	107	954
1978	75	54	95	63	64	69	68	77	65	84	83	72	869
1979	63	60	86	75	45	64	66	75	69	79	72	93	847
1980	48	55	66	59	47	56	60	53	45	58	61	49	657
1981	69	60	58	61	74	65	61	63	68	71	59	57	766
1982	55	53	59	59	67	45	47	71	53	69	65	66	709
1983	42	59	53	63	62	61	65	51	59	43	54	52	664
1984	65	48	58	50	56	48	46	50	71	53	55	58	658
1985	56	47	50	65	75	50	51	50	58	61	56	64	683
1986	56	50	70	69	59	53	42	54	54	52	59	51	669
1987	62	43	57	52	63	59	62	49	62	61	55	80	705
1988	49	58	69	54	79	50	54	52	64	59	43	70	701
1989	76	65	80	59	67	73	52	65	82	50	41	66	776
1990	48	44	55	39	56	64	41	34	48	35	40	44	548
1991	45	39	70	30	34	29	44	47	41	36	35	53	503
1992	34	33	34	47	33	29	23	27	28	38	30	40	396
1993	27	40	37	39	44	33	33	27	34	39	43	40	436
1994	36	31	44	35	27	33	29	37	17	27	32	30	378
1995	38	35	26	33	34	41	27	34	34	32	38	46	418
1996	40	47	35	38	28	29	30	35	49	24	33	30	418
1997	36	25	30	30	40	22	39	26	26	29	39	35	377
1998	29	29	32	36	31	22	40	19	37	36	49	30	390
1999	32	31	35	35	34	24	35	26	28	38	29	37	384
2000	32	26	46	32	39	32	33	29	36	29	44	29	407
2001	44	30	31	32	31	41	34	37	35	51	41	37	444
2002	32	31	45	31	45	32	27	25	31	30	31	37	397
2003	21	41	36	28	31	28	20	23	23	24	24	31	330
2004	32	22	30	30	46	28	27	26	22	28	25	27	343
2005	33	27	47	21	29	23	30	25	25	33	17	36	346
2006	24	37	23	23	27	23	25	22	43	20	31	39	337
2007	23	23	32	25	26	28	28	20	23	37	26	41	332
2008	28	20	37	25	25	20	27	27	18	25	26	25	303
2009	31	18	23	32	19	30	19	21	14	28	21	34	290
2010	26	25	23	20	31	26	26	18	17	36	12	28	288
2011	18	20	34	31	30	24	25	14	12	22	30	27	287
2012	30	20	25	19	23	22	17	25	17	34	26	24	282
2013	14	24	24	19	18	13	24	20	19	15	23	30	243
2014	25	21	25	14	23	17	22	21	20	19	28	13	248
2015	24	20	22	22	21	22	18	26	14	27	19	17	252
2016	21	34											
<b>Ave</b>	<b>48</b>	<b>46</b>	<b>55</b>	<b>53</b>	<b>53</b>	<b>51</b>	<b>51</b>	<b>49</b>	<b>49</b>	<b>49</b>	<b>49</b>	<b>54</b>	<b>599</b>
<b>Max</b>	<b>85</b>	<b>84</b>	<b>106</b>	<b>103</b>	<b>97</b>	<b>94</b>	<b>110</b>	<b>106</b>	<b>89</b>	<b>95</b>	<b>96</b>	<b>107</b>	<b>1,061</b>
<b>Min</b>	<b>14</b>	<b>18</b>	<b>22</b>	<b>14</b>	<b>18</b>	<b>13</b>	<b>17</b>	<b>14</b>	<b>12</b>	<b>15</b>	<b>12</b>	<b>13</b>	<b>21</b>

## Fatalities by Week (2009 to 2016)

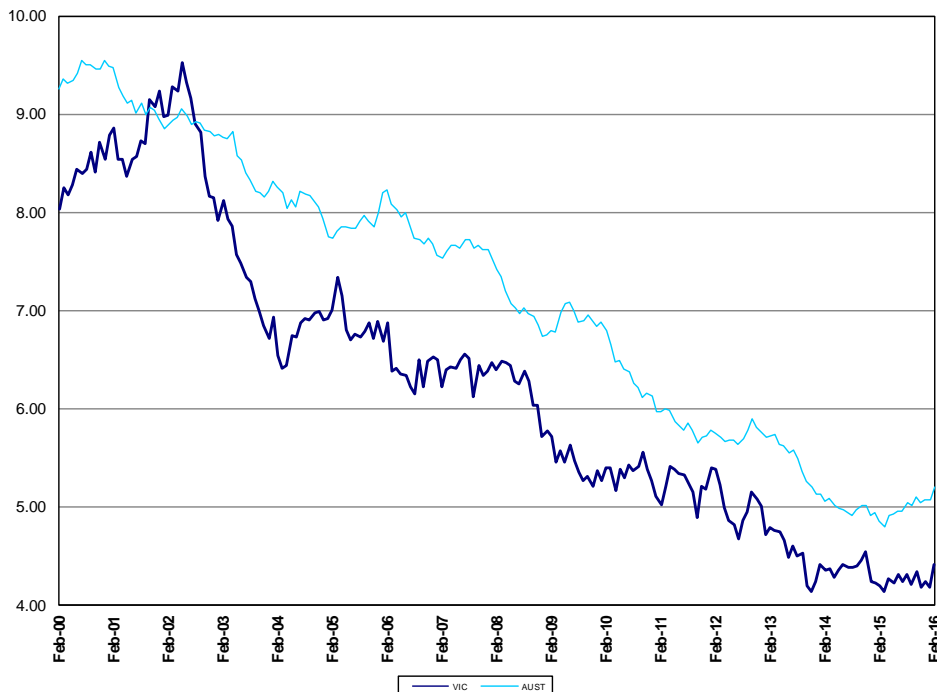
Week Ending	2009	2010	2011	2012	2013	2014	2015	2016	Cumulative 2016	% Change 2016-2015
5-Jan	7	3	2	3	1	0	2	1	2	-
12-Jan	10	5	6	7	3	5	5	4	5	-29%
19-Jan	4	6	3	8	6	7	6	3	8	-38%
26-Jan	4	5	4	9	4	9	2	3	11	-48%
2-Feb	6	9	6	5	3	6	10	10	21	-22%
9-Feb	6	7	5	3	8	4	6	4	25	-19%
16-Feb	7	4	6	7	6	8	4	13	38	-3%
23-Feb	4	8	3	6	6	2	6	7	45	+10%
2-Mar	1	7	3	2	2	6	4			
9-Mar	3	2	10	3	4	8	8			
16-Mar	6	8	6	11	6	4	6			
23-Mar	6	3	9	5	10	4	2			
30-Mar	8	7	9	6	2	6	3			
6-Apr	5	4	6	7	4	6	3			
13-Apr	5	5	9	2	6	6	6			
20-Apr	11	7	7	6	4	2	8			
27-Apr	9	1	6	3	5	2	5			
4-May	6	6	6	10	6	3	4			
11-May	7	8	6	2	3	4	6			
18-May	1	4	7	4	1	3	4			
25-May	2	11	10	6	2	5	4			
1-Jun	6	5	5	2	9	9	5			
8-Jun	4	7	4	8	2	2	5			
15-Jun	9	4	6	3	3	2	4			
22-Jun	7	8	7	8	5	3	4			
29-Jun	9	7	6	3	1	8	5			
6-Jul	3	7	4	2	5	6	10			
13-Jul	6	2	8	5	7	7	2			
20-Jul	4	3	6	5	4	3	2			
27-Jul	5	8	6	5	5	4	3			
3-Aug	4	10	3	1	8	4	6			
10-Aug	7	3	5	5	1	5	4			
17-Aug	6	5	3	5	3	6	9			
24-Aug	3	5	2	6	6	4	7			
31-Aug	3	1	3	8	5	5	3			
7-Sep	2	5	1	5	5	4	4			
14-Sep	4	1	4	6	2	6	3			
21-Sep	4	4	1	3	3	4	2			
28-Sep	3	5	5	3	8	3	6			
5-Oct	2	9	4	7	3	4	4			
12-Oct	6	10	5	8	2	8	6			
19-Oct	8	5	3	9	3	0	6			
26-Oct	8	7	3	6	3	8	8			
2-Nov	5	8	8	6	6	2	5			
9-Nov	3	1	6	7	8	3	5			
16-Nov	9	2	12	6	2	8	4			
23-Nov	6	3	9	5	8	3	2			
30-Nov	4	5	2	9	4	13	5			
7-Dec	5	4	10	7	6	5	8			
14-Dec	8	8	3	4	10	2	5			
21-Dec	11	6	7	1	9	3	2			
28-Dec	6	8	6	8	4	3	5			
31-Dec	2	2	1	1	1	1	1			
<b>Total</b>	<b>290</b>	<b>288</b>	<b>287</b>	<b>282</b>	<b>243</b>	<b>248</b>	<b>254</b>	<b>45</b>		

### The National Picture

State	Fatalities (12 months to February)				2016 v 2015	
	2016	2015	2014	2013		
NSW	358	297	348	360	+61	(+21%)
VIC	263	246	251	270	+17	(+7%)
QLD	257	219	245	294	+38	(+17%)
SA	97	112	97	93	-15	(-13%)
WA	166	185	150	189	-19	(-10%)
TAS	35	39	36	32	-4	(-10%)
NT	51	37	40	47	+14	(+38%)
ACT	14	9	8	13	+5	(+56%)
AUST TOTAL	1,241	1,144	1,175	1,298	+97	(+8%)
AUST minus VIC	978	898	924	1,028	+80	(+9%)

State	Fatalities per 10,000 registered vehicles (12 months to February)			Fatalities per 100,000 population (12 months to February)		
	2016	2015	2014	2016	2015	2014
NSW	0.67	0.57	0.69	4.69	3.94	4.69
VIC	0.57	0.54	0.57	4.42	4.20	4.36
QLD	0.67	0.58	0.67	5.37	4.63	5.25
SA	0.71	0.84	0.74	5.70	6.64	5.80
WA	0.75	0.85	0.71	6.40	7.18	5.94
TAS	0.77	0.87	0.82	6.77	7.57	7.01
NT	3.25	2.41	2.66	20.86	15.10	16.64
ACT	0.49	0.32	0.29	3.58	2.33	2.08
AUST TOTAL	0.68	0.64	0.67	5.21	4.86	5.07
AUST minus VIC	0.72	0.67	0.71	5.48	5.04	5.29

Deaths per 100,000 population, Victoria v Australia 2000 - 2015



Victoria v Australia – 12 Month Moving Fatality Rate

## Booze-Bus Random Breath Testing

12 months to September 2015 (monthly totals)

	2014			2015								
	Oct	Nov	Dec	Jan	Feb	Mar	Apr	May	Jun	Jul	Aug	Sep
Melbourne	100,252	86,261	99,008	95,430	76,758	84,559	74,387	70,603	63,988	64,557	78,225	79,794
Country	8,116	10,510	7,084	5,191	7,909	5,830	3,095	7,283	10,186	2,833	3,734	4,598
Vic Total	108,368	96,771	106,092	100,621	84,667	90,389	77,482	77,886	74,174	67,390	81,959	84,392

12 months to September 2015 vs previous 12 months

	2015	2014	2013	2015 v 2014		2015 v 2013	
Melbourne	1,172,395	1,060,175	1,062,075	+112220	(+11%)	+110320	(+10%)
Country	99,061	90,264	101,223	+8797	(+10%)	-2162	(-2%)
Vic Total	1,271,456	1,150,439	1,163,298	+121017	(+11%)	+108158	(+9%)

## Mobile Safety Camera Data

Speed Infringements Issued from Mobile Cameras (monthly totals)

Monthly Average = 32,664

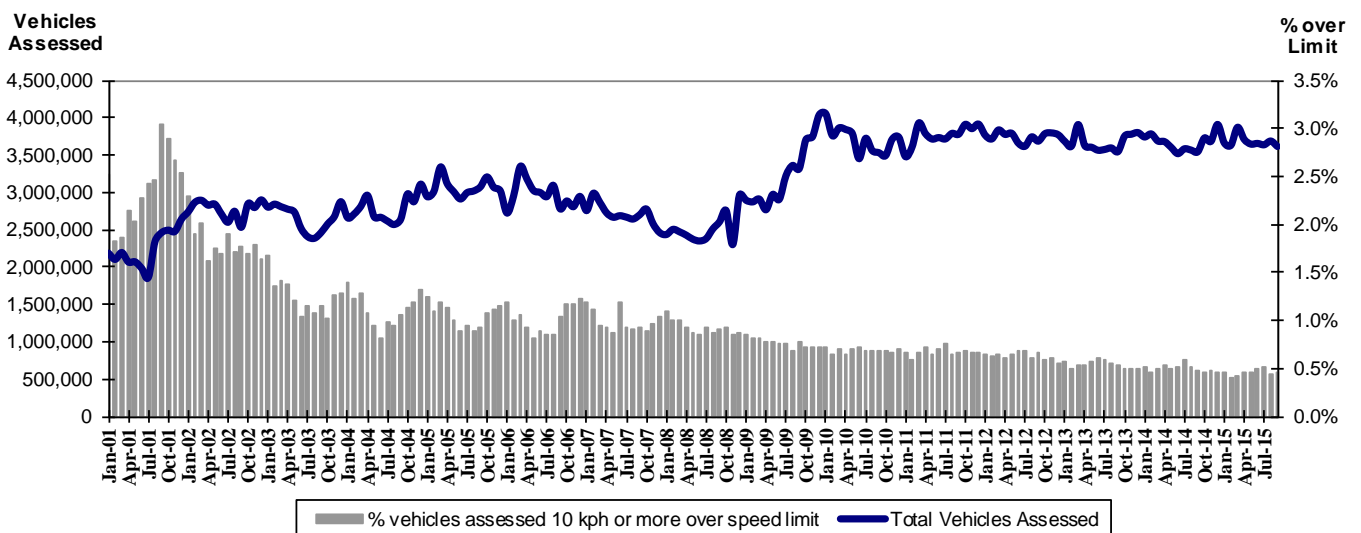
2014	2015											
	Oct	Nov	Dec	Jan	Feb	Mar	Apr	May	Jun	Jul	Aug	Sep
	35,422	32,416	28,732	37,982	31,250	31,144	33,790	30,434	33,386	36,437	31,001	29,975

Excessive Speed Infringements (ESI) Issued from Mobile Cameras (monthly totals)

Monthly Average = 303

2014	2015											
	Oct	Nov	Dec	Jan	Feb	Mar	Apr	May	Jun	Jul	Aug	Sep
	334	287	258	311	270	303	335	258	342	338	312	283

Notes: An ESI is defined as 25km/h over the speed limit except in a 110km/h zone where it is 20km/h over the limit.



Mobile Safety Cameras – Vehicles assessed and percentage of vehicles assessed 10km/h or more over speed limit per month

## Explanations and References

Hi-AlcTime is those times of the day and week (*shaded* in the table below) when casualty crashes are ten times more likely to involve alcohol than casualty crashes at other (Lo-AlcTime) times.

	12am - 6am	6am - 8am	8am - 10am	10am - 2pm	2pm - 4pm	4pm - 6pm	6pm - 12pm
Monday							
Tuesday							
Wednesday							
Thursday							
Friday							
Saturday							
Sunday							

Police Service Areas align with Local Government Areas. Most Police Service Areas are equivalent to a single Local Government Area, while the remainder comprise two or three Local Government Areas.

Police Service Area	Local Government Area(s)	Police Service Area	Local Government Area(s)
BALLARAT	BALLARAT, PYRENEES	MAROONDAH	MAROONDAH
BANYULE	BANYULE	MELBOURNE	MELBOURNE
BASS COAST	BASS COAST, SOUTH GIPPSLAND	MELTON	MELTON
BAW BAW	BAWBAW	MILDURA	MILDURA
BENALLA	BENALLA, MANSFIELD, MURRINDINDI	MITCHELL	MITCHELL, STRATHBOGIE
BENDIGO	GREATER BENDIGO	MONASH	MONASH
BOROONDARA	BOROONDARA	MOONEE VALLEY	MOONEE VALLEY
BRIMBANK	BRIMBANK	MOORABOOL	GOLDEN PLAINS, HEPBURN, MOORABOOL
CAMPASPE	CAMPASPE	MORELAND	MORELAND
CARDINIA	CARDINIA	MORNINGTON PENINSULA	MORNINGTON PENINSULA
CASEY	CASEY	NILLUMBIK	NILLUMBIK
CENTRAL GOLDFIELDS	CENTRAL GOLDFIELDS, LODDON	NORTHERN GRAMPIANS	ARARAT, NORTHERN GRAMPIANS, YARRIAMBICK
GREATER DANDENONG	GREATER DANDENONG	PORT PHILLIP	PORT PHILLIP
DAREBIN	DAREBIN	SHEPPARTON	GREATER SHEPPARTON
EAST GIPPSLAND	EAST GIPPSLAND	SOUTHERN GRAMPIANS	GLENELG, SOUTHERN GRAMPIANS
FRANKSTON	FRANKSTON	STONNINGTON	STONNINGTON
GEELONG	GREATER GEELONG, QUEENSCLIFF	SURFCOAST	SURFCOAST, COLAC OTWAY
GLENEIRA	GLENEIRA, BAYSIDE	SWANHILL	BULOKE, GANNAWARRA, SWAN HILL
HOBSONS BAY	HOBSONSBAY	WANGARATTA	ALPINE, MOIRA, WANGARATTA
HORSHAM	HINDMARSH, HORSHAM, WESTWIMMERA	WARRNAMBOOL	CORANGAMITE, MOYNE, WARRNAMBOOL
HUME	HUME	WELLINGTON	WELLINGTON
KINGSTON	KINGSTON	WHITEHORSE	WHITEHORSE
KNOX	KNOX	WHITTLESEA	WHITTLESEA
LATROBE	LATROBE	WODONGA	INDIGO, TOWONG, WODONGA
MACEDON RANGES	MOUNT ALEXANDER, MACEDON RANGES	WYNDHAM	WYNDHAM
MANNINGHAM	MANNINGHAM	YARRA	YARRA
MARIBYRNONG	MARIBYRNONG	YARRA RANGES	YARRA RANGES



## Useful Internet Sites

### TAC Sites

- TAC Safety (Road Safety) [www.tacsafety.com.au](http://www.tacsafety.com.au)
- TAC How safe is your car [www.howsafeisyourcar.com.au](http://www.howsafeisyourcar.com.au)
- TAC Learners Log [www.learnerslog.com.au](http://www.learnerslog.com.au)
- TAC Motorcycle Safety Website [www.spokes.com.au](http://www.spokes.com.au)
- TAC Corporate site [www.tac.vic.gov.au](http://www.tac.vic.gov.au)

### Victorian Sites:

- VicRoads [www.vicroads.vic.gov.au](http://www.vicroads.vic.gov.au)
- Victoria Police [www.police.vic.gov.au](http://www.police.vic.gov.au)
- Parliamentary Road Safety Committee [www.parliament.vic.gov.au/rsc/](http://www.parliament.vic.gov.au/rsc/)
- ARRB Transport Research [www.arrb.com.au](http://www.arrb.com.au)
- RACV [www.racv.com.au](http://www.racv.com.au)
- Monash University Accident Research Centre [www.monash.edu.au/muarc](http://www.monash.edu.au/muarc)
- Roadsafe [www.roadsafe.org.au](http://www.roadsafe.org.au)
- Cameras Save Lives [www.camerassavelives.vic.gov.au](http://www.camerassavelives.vic.gov.au)

### National and Interstate Sites:

- Australian Transport Safety Bureau [www.atsb.gov.au](http://www.atsb.gov.au)
- Roads and Traffic Authority (NSW) [www.rta.nsw.gov.au](http://www.rta.nsw.gov.au)
- Queensland Transport - Road Safety [transport.qld.gov.au/Home/Safety/Road](http://transport.qld.gov.au/Home/Safety/Road)
- Department of Transport (SA) [www.transport.sa.gov.au/index.htm](http://www.transport.sa.gov.au/index.htm)
- Main Roads Western Australia - Road Safety [www.mrwa.wa.gov.au](http://www.mrwa.wa.gov.au)

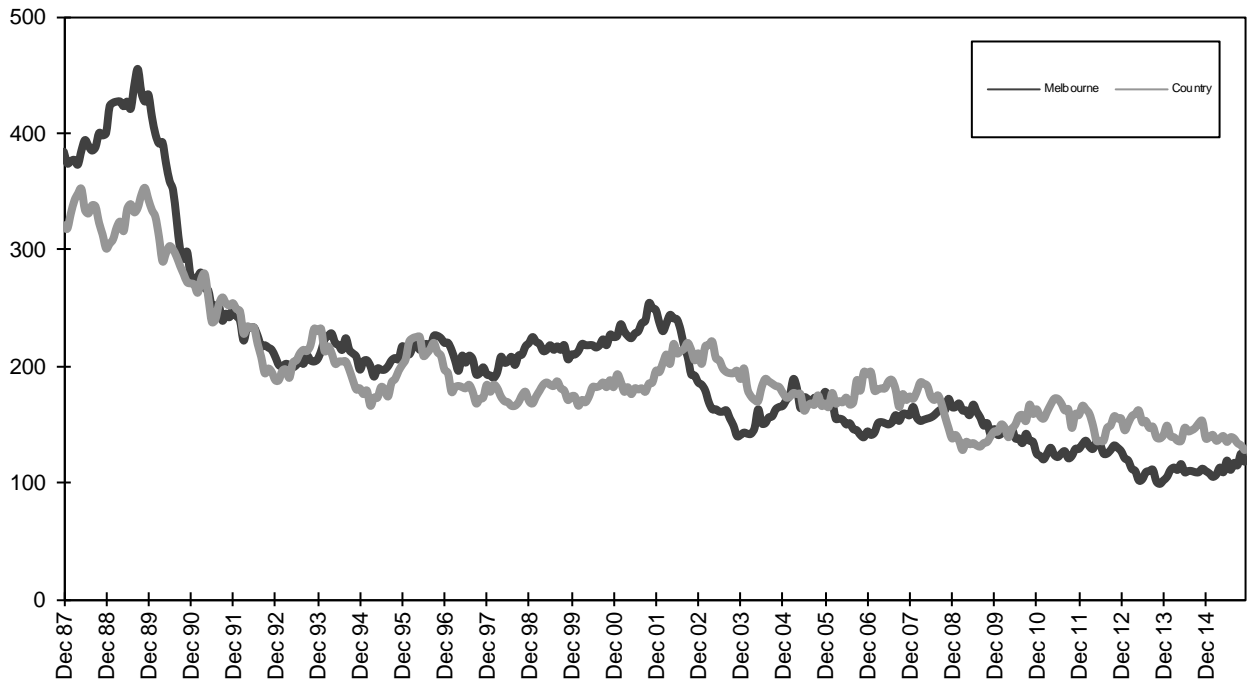
### International Sites:

- National Highway Traffic Safety Admin (USA) [www.nhtsa.dot.gov](http://www.nhtsa.dot.gov)
- Swedish Road and Transport Institute (VTI) [www.vti.se](http://www.vti.se)
- SWOV Institute for Road Safety Research [www.swov.nl](http://www.swov.nl)

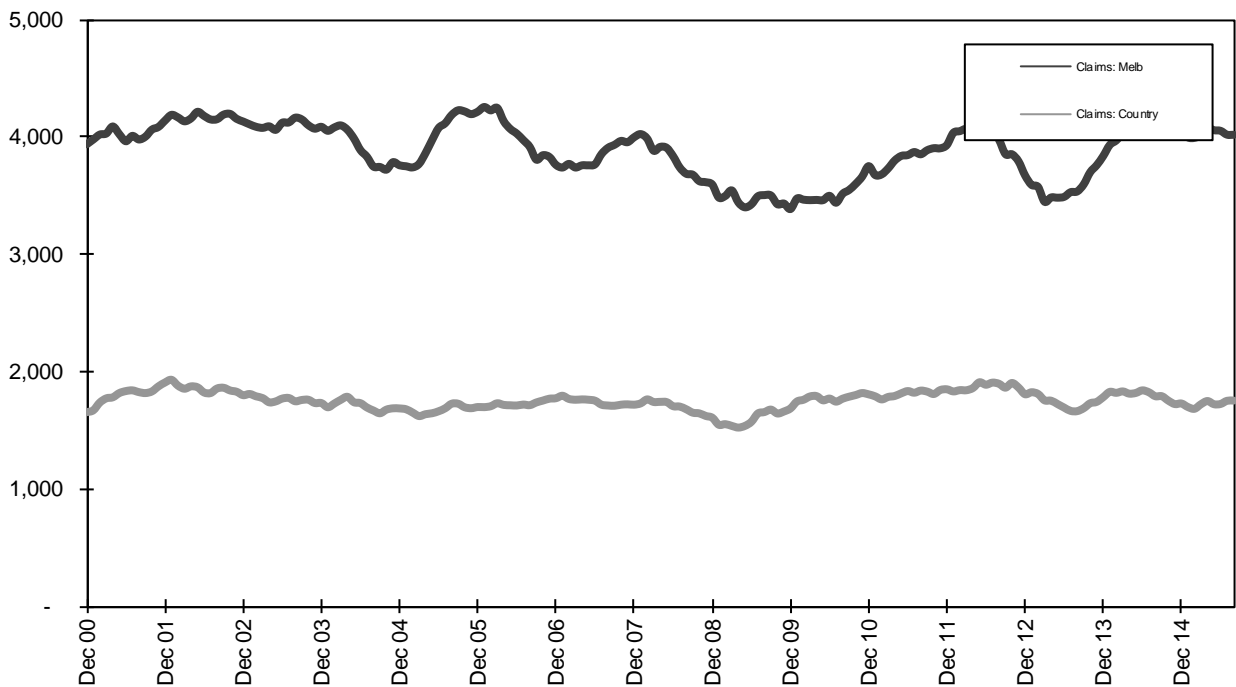
### Related Sites:

- Australian Drug Foundation [www.adf.org.au](http://www.adf.org.au)
- Amy Gillett Foundation [www.amygillett.org.au](http://www.amygillett.org.au)

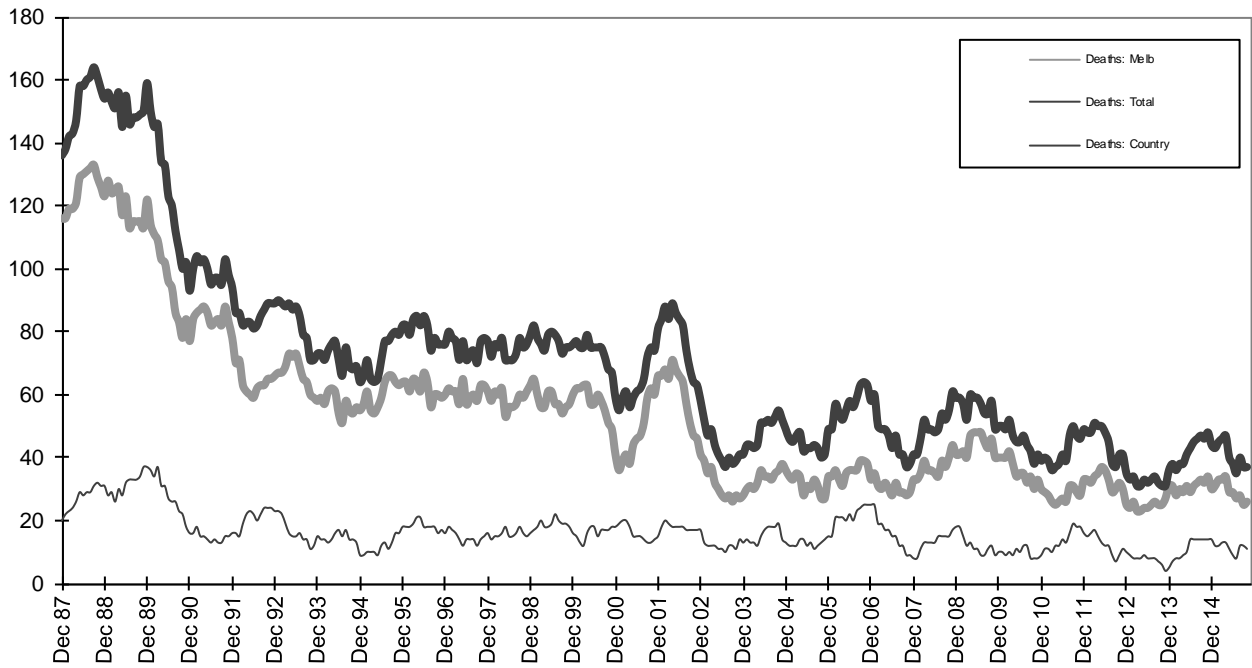
Figures



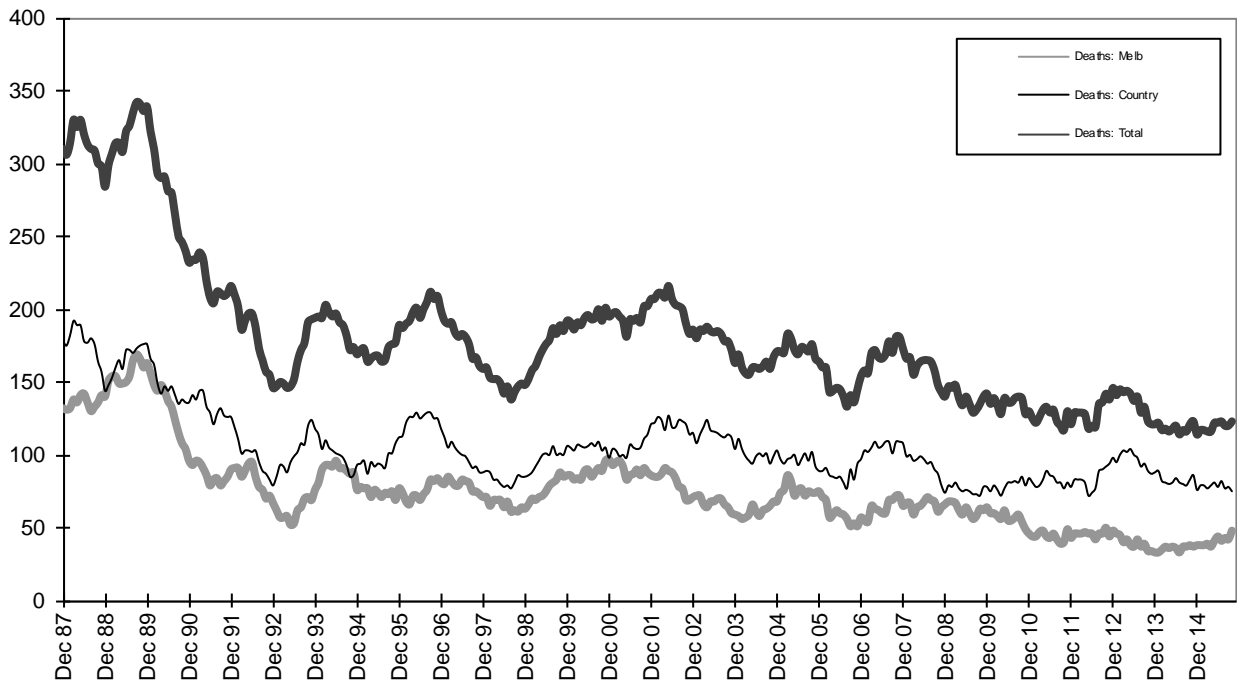
Graph 1a - Melbourne/country fatalities



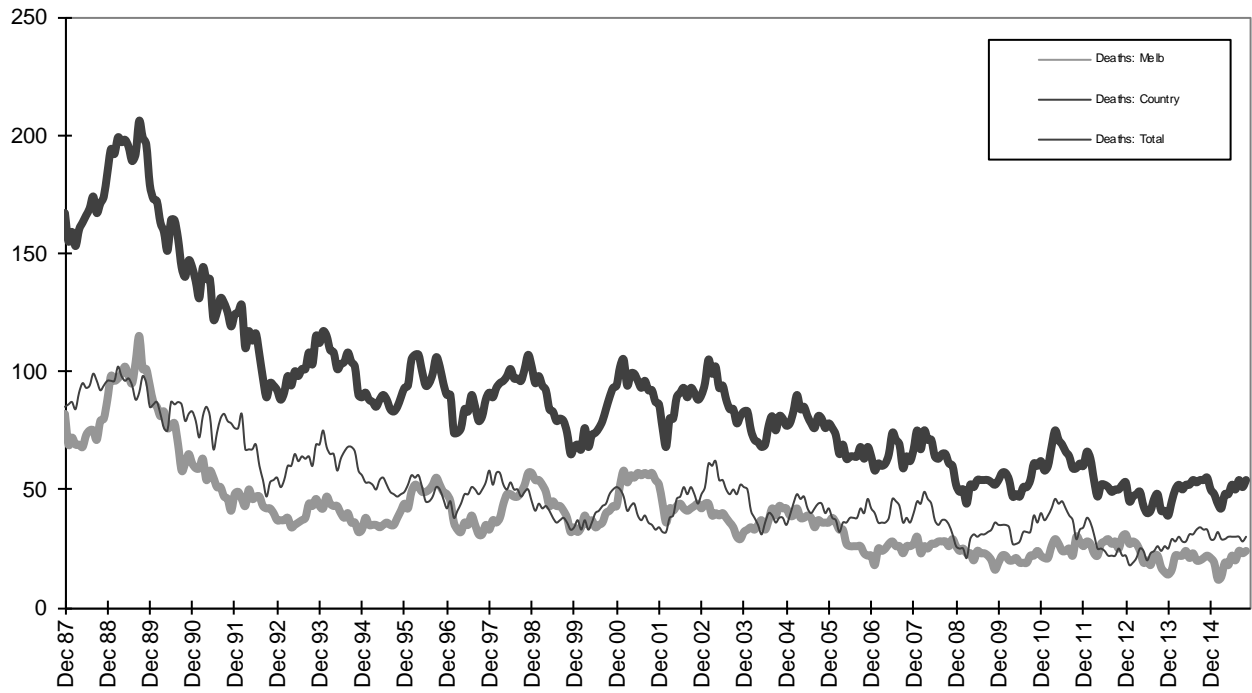
Graph 1b - Melbourne/country Claims involving an acute hospital admission



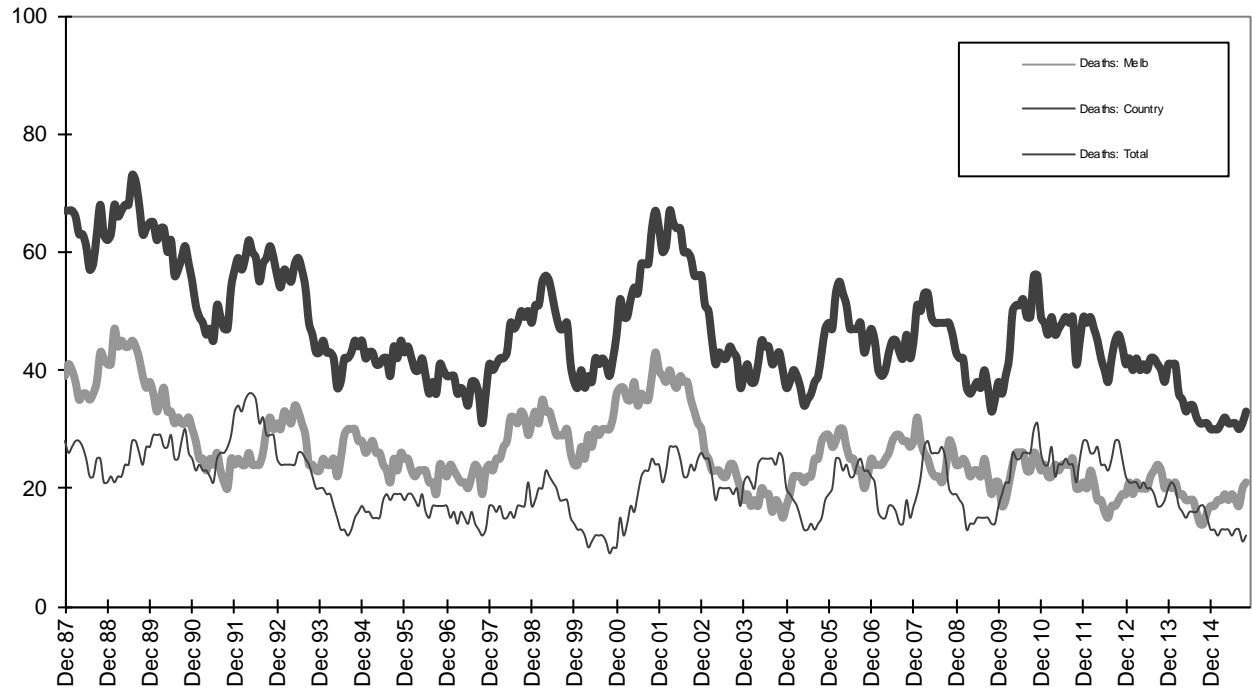
Graph 2a - Pedestrian fatalities (Melbourne/country)



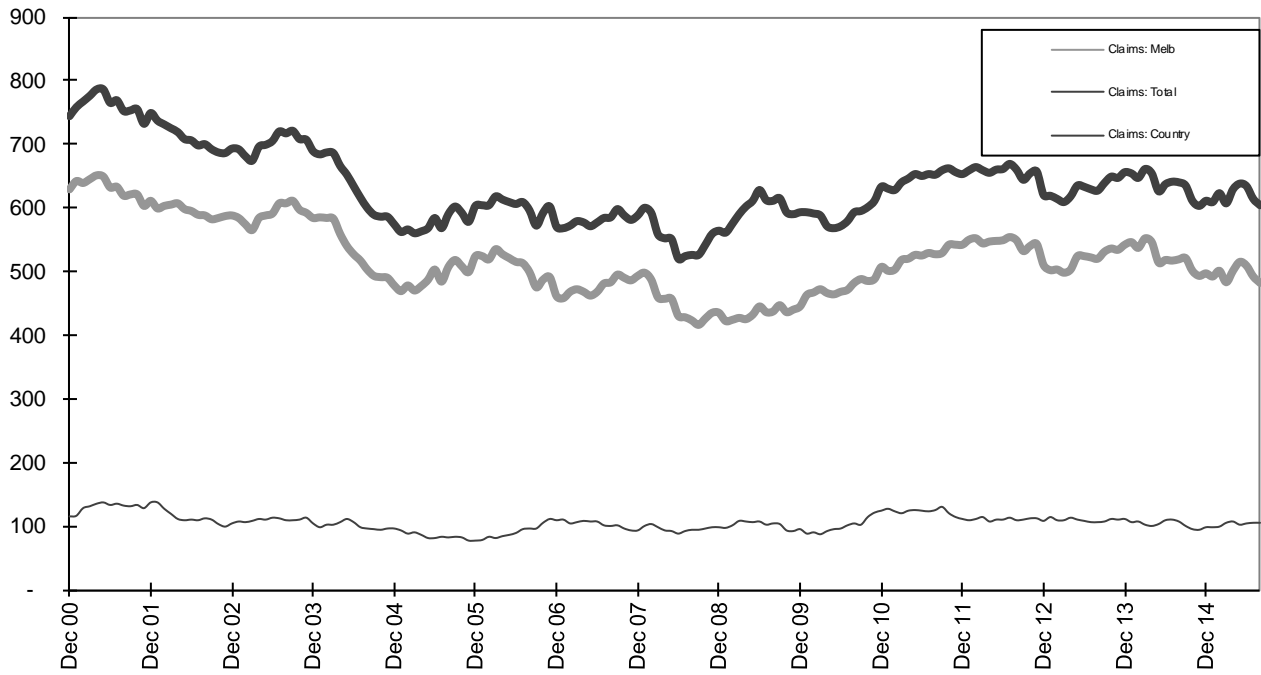
Graph 2b - Driver fatalities (Melbourne/country)



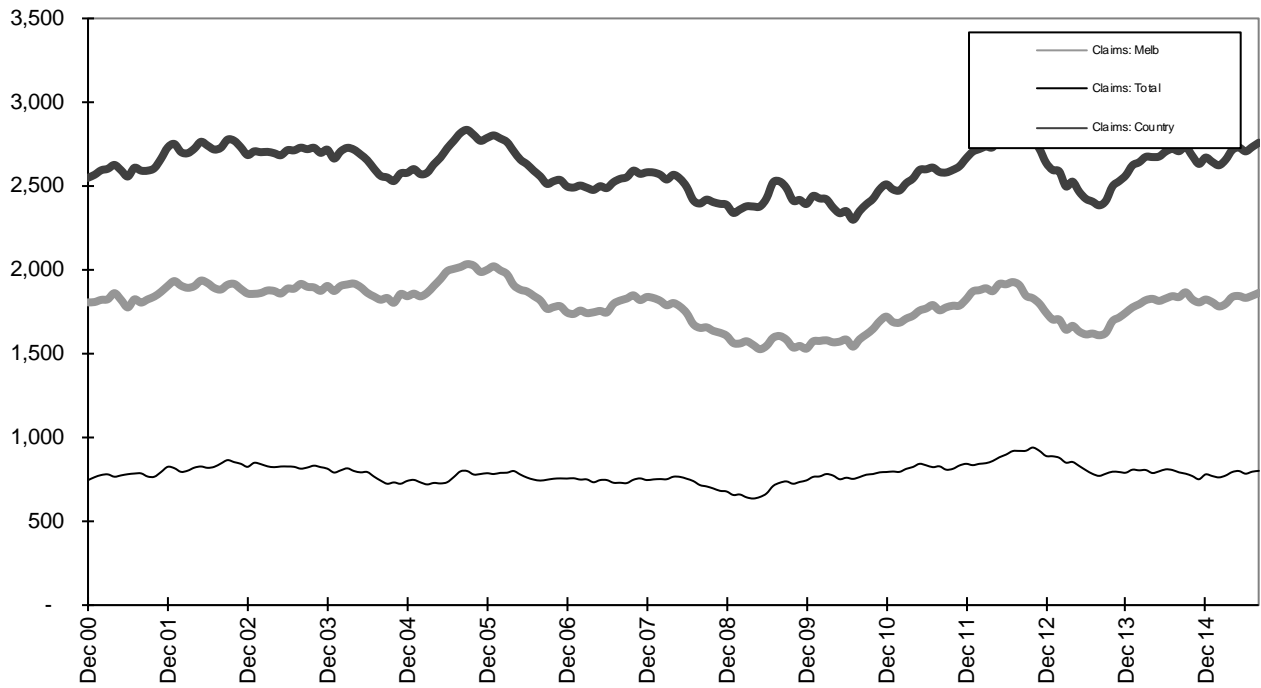
Graph 2c - Passenger fatalities (Melbourne/country)



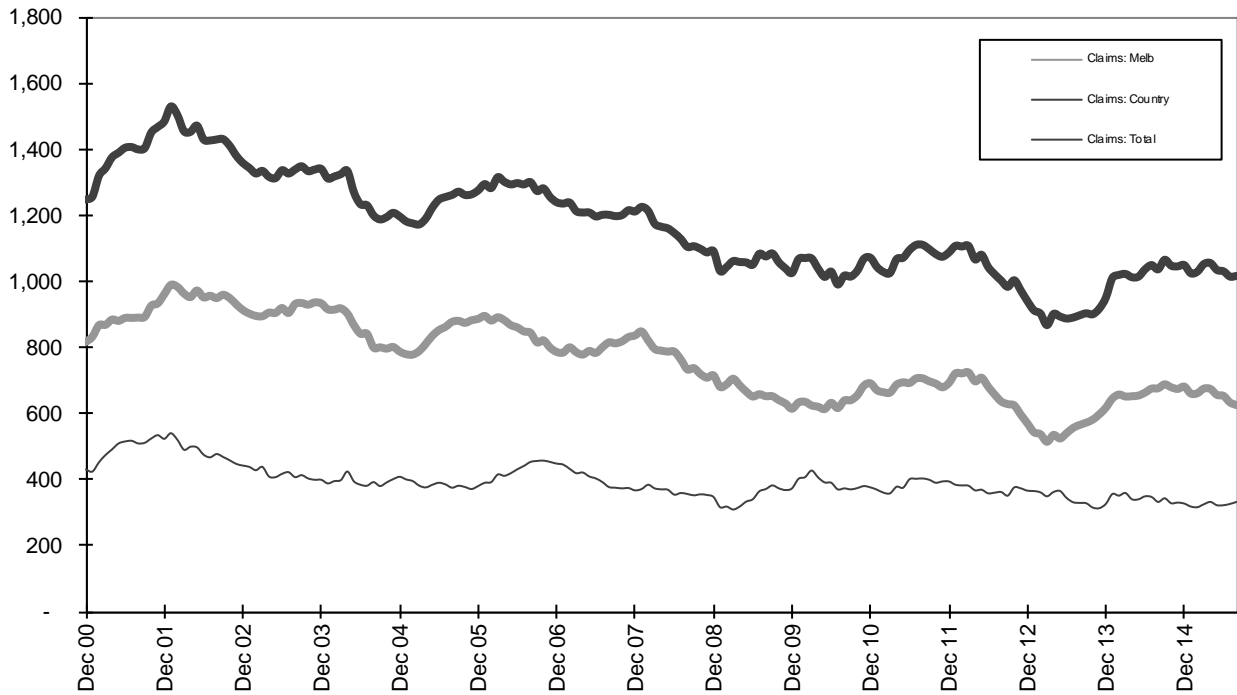
Graph 2d - Motorcyclist fatalities (Melbourne/country)



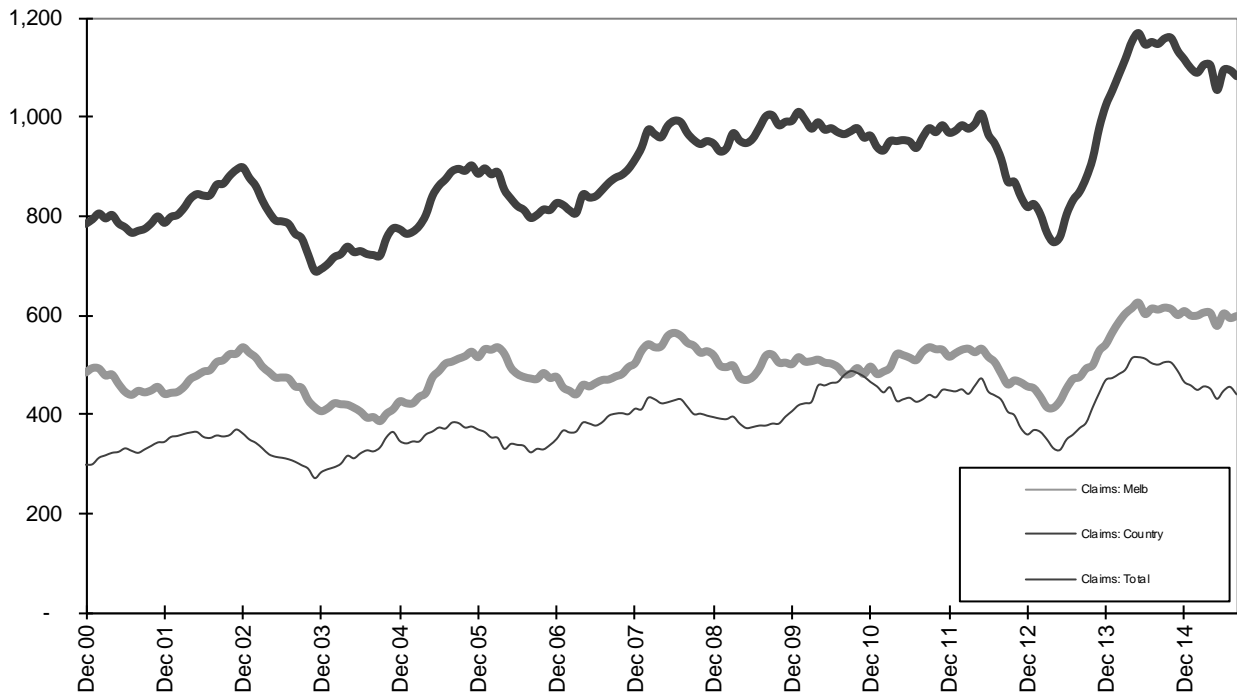
Graph 3a – Pedestrian Claims involving an acute hospital admission (Melbourne/country)



Graph 3b – Driver Claims involving an acute hospital admission (Melbourne/country)



Graph 3c - Passenger Claims involving an acute hospital admission (Melbourne/country)



Graph 3d - Motorcyclist Claims involving an acute hospital admission (Melbourne/country)