

ROAD SAFETY STATISTICAL SUMMARY

April 2016



TRANSPORT
ACCIDENT
COMMISSION

60 Brougham Street
Geelong Vic 3220
PO Box 742
Geelong Vic 3220
Ausdoc DX 216079 Geelong

Telephone 1300 654 329
STD Toll Free 1800 332 556
Fax: 03 9656 9300
www.tac.vic.gov.au
ABN 22 033 947 623

Contents

Status Report.....	4
Fatalities.....	4
Claims involving an acute hospital admission*	5
Fatalities: 12 months to April 2016	6
Claims involving acute hospitalisation over 14 days: 12 months to October 2015 (claim acceptance date).....	8
Claims involving an acute hospital admission: 12 months to October 2015 (claim acceptance date).....	10
Fatalities: Victorian monthly totals since 1951.....	12
Fatalities by Week (2009 to 2016).....	13
The National Picture.....	14
Booze-Bus Random Breath Testing	15
Mobile Safety Camera Data.....	15
Explanations and References	16
Useful Internet Sites.....	17
Figures.....	18

Note about the data in this report

- All data provided in this report is the data most recently available at time of production. Fatalities, breath-test data and safety camera data are updated to the end of report month. A 6-month lag applies to TAC claims data.
- Reported data will have one extra day of exposure for leap years.
- Data is subject to revision as additional information about known accidents/claims is received, and as new accident/claim reports are received and processed.

*An acute hospital admission refers to a hospital admission that occurred within 7 days of accident.

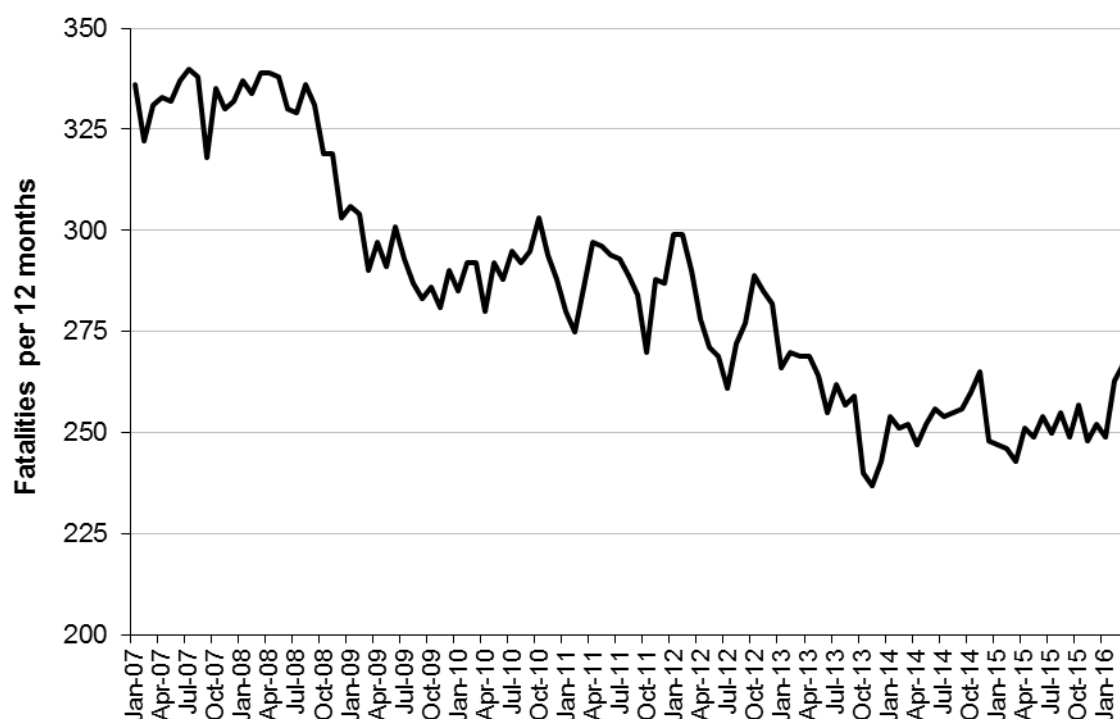
Status Report

Fatalities

- The rolling 12 month number of road fatalities in April 2016 stands at 264. The number of fatalities in 2015 stood at 251 (5.2% increase).
- 18 people were fatally injured in April 2016 on Victorian roads. This compares to 22 in April 2015.

Fatalities (rolling 12 month, to end April 2016)

Category	2016	2015	2014	2016 v 2015	2016 v 2014	2016 v 2013	2016 v 2012	5 Year Av
Fatal Injuries (Rolling 12 Month Total)								
Fatal (to April)	264	251	247	+13	(+5.2%)	+17	(+7%)	262
per 10,000 veh	0.57	0.55	0.55	+0.02	(+4%)	+0.02	(+4%)	0.59
per 100,000 pop	4.42	4.27	4.28	+0.15	(+4%)	+0.14	(+3%)	4.54
Accidents (Rolling 12 Month Total)								
Fatal (to April)	248	228	222	+20	(+9%)	+26	(+12%)	240
per 10,000 veh	0.54	0.50	0.50	+0.04	(+8%)	+0.04	(+8%)	0.51
per 100,000 pop	4.15	3.88	3.85	0.27	(+7%)	+0.30	(+8%)	3.98

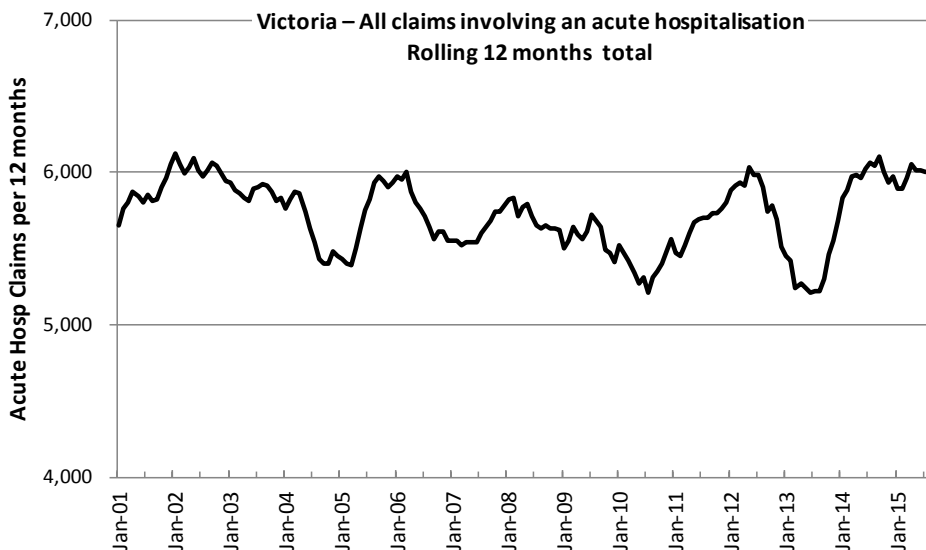
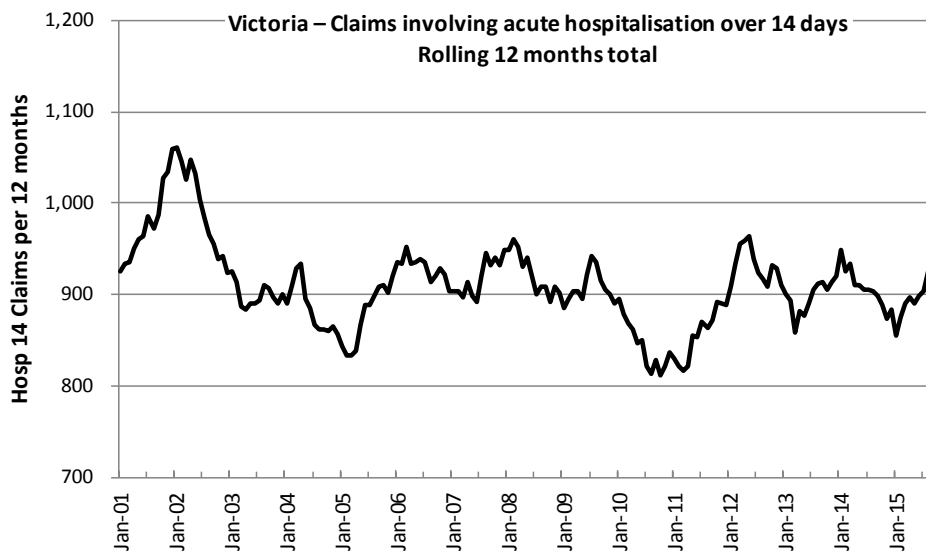


Victoria - Fatalities, rolling 12 months total

Claims involving an acute hospital admission*

(by claim acceptance date – rolling 12 month, to midnight 31 October 2015)

Category	2015	2014	2013	2015 v 2014		2015 v 2013		5 Year Av
Claims involving an acute hospitalisation over 14 days (Rolling 12 Month Total)								
Claims (to October)	954	888	906	+66	(+7%)	+48	(+5%)	914
per 100,000 pop	16.1	15.2	15.8	+0.9	(+6%)	+0.3	(+2%)	15.8
per 10,000 veh	2.1	2.0	2.1	+0.1	(+5%)	0.0	(+0%)	2.1
All claims involving an acute hospitalisation (Rolling 12 Month Total)								
Claims (to October)	6,097	6,003	5,459	+94	(+2%)	+638	(+12%)	5,815
per 100,000 pop	103.0	103.1	95.5	-0.1	(-0%)	+7.5	(+8%)	101.4
per 10,000 veh	13.3	13.3	12.4	0.0	(+0%)	+0.9	(+7%)	13.2



*An acute hospital admission refers to a hospital admission that occurred within 7 days of accident.

Fatalities: 12 months to April 2016

Category	2016	2015	2014	2016 v 2015		2016 v 2014		5 Year Av
Overview								
Fatalities	264	251	247	+13	(+5%)	+17	(+7%)	262
Accidents	248	228	222	+20	(+9%)	+26	(+12%)	240
Sex								
Female	76	65	79	+11	(+17%)	-3	(-4%)	77
Male	187	186	168	+1	(+1%)	+19	(+11%)	185
Roaduser								
Bicyclist	12	8	8	+4	(+50%)	+4	(+50%)	8
Driver	128	116	116	12	(+10%)	+12	(+10%)	126
Motorcyclist	45	32	35	+13	(+41%)	+10	(+29%)	39
Passenger	50	48	50	+2	(+4%)	0	(0%)	49
Pedestrian	29	47	38	-18	(-38%)	-9	(-24%)	39
Location								
Melbourne	125	113	111	+12	(+11%)	+14	(+13%)	118
Rural Victoria	139	138	136	+1	(+1%)	+3	(+2%)	144
Agegroup								
0-4	3	4	1	-1	(-25%)	+2	(+200%)	3
5-15	4	4	9	0	(0%)	-5	(-56%)	6
16-17	14	8	3	+6	(+75%)	+11	(+367%)	7
18-20	30	14	16	+16	(+114%)	+14	(+88%)	24
21-25	16	34	21	-18	(-53%)	-5	(-24%)	27
26-29	21	24	17	-3	(-13%)	+4	(+24%)	20
30-39	31	32	34	-1	(-3%)	-3	(-9%)	36
40-49	35	30	31	+5	(+17%)	+4	(+13%)	31
50-59	32	29	29	+3	(+10%)	+3	(+10%)	32
60-69	28	30	26	-2	(-7%)	+2	(+8%)	29
70+	50	42	59	+8	(+19%)	-9	(-15%)	47
Alctime								
High (Melb)	67	62	56	+5	(+8%)	+11	(+20%)	62
High (Rural)	68	59	48	+9	(+15%)	+20	(+42%)	64
High (Vic)	135	121	104	+14	(+12%)	+31	(+30%)	62
Low (Melb)	58	51	55	+7	(+14%)	+3	(+5%)	56
Low (Rural)	71	79	88	-8	(-10%)	-17	(-19%)	80
Low (Vic)	129	130	143	-1	(-1%)	-14	(-10%)	136
Accident Type								
Intersection								
Adjacent direction	38	24	41	+14	(+58%)	-3	(-7%)	32
Opposing direction	9	10	4	-1	(-10%)	+5	(+125%)	6
Mid-block/other								
Head on	50	28	46	+22	(+79%)	+4	(+9%)	41
Same direction	19	11	12	+8	(+73%)	+7	(+58%)	14
Manoeuvre/o'taking	19	14	9	+5	(+36%)	+10	(+111%)	14
On path	5	8	3	-3	(-38%)	+2	(+67%)	6
Single vehicle	94	105	86	-11	(-10%)	+8	(+9%)	104
Other (incl peds)	30	51	46	-21	(-41%)	-16	(-35%)	45

Fatalities: 12 months to April 2016 – Continued

Category	2016	2015	2014	2016 v 2015		2016 v 2014		5 Year Av
Police Service Area (based on Local Government Area (see p.13))								
BALLARAT	6	4	7	+2	(+50%)	-1	(-14%)	5
BANYULE	2	1	3	+1	(+100%)	-1	(-33%)	2
BASS COAST	6	6	9	0	(0%)	-3	(-33%)	7
BAW BAW	2	4	5	-2	(-50%)	-3	(-60%)	4
BENALLA	10	11	10	-1	(-9%)	0	(0%)	9
BENDIGO	4	7	1	-3	(-43%)	+3	(+300%)	6
BOROONDARA	3	2	6	+1	(+50%)	-3	(-50%)	3
BRIMBANK	8	4	5	+4	(+100%)	+3	(+60%)	7
CAMPASPE	4	4	5	0	(0%)	-1	(-20%)	5
CARDINIA	9	5	6	+4	(+80%)	+3	(+50%)	7
CASEY	8	4	6	+4	(+100%)	+2	(+33%)	6
CENTRAL GOLDFIELDS	3	0	5	+3		-2	(-40%)	2
DAREBIN	5	0	3	+5		+2	(+67%)	3
EAST GIPPSLAND	9	6	3	+3	(+50%)	+6	(+200%)	6
FRANKSTON	3	5	1	-2	(-40%)	+2	(+200%)	2
GEELONG	4	6	4	-2	(-33%)	0	(0%)	8
GLEN EIRA	2	5	5	-3	(-60%)	-3	(-60%)	5
GREATER DANDENONG	7	5	2	+2	(+40%)	+5	(+250%)	5
HOBSONS BAY	5	1	3	+4	(+400%)	+2	(+67%)	2
HORSHAM	6	2	2	+4	(+200%)	+4	(+200%)	4
HUME	6	5	2	+1	(+20%)	+4	(+200%)	6
KINGSTON	4	4	7	0	(0%)	-3	(-43%)	5
KNOX	6	5	5	+1	(+20%)	+1	(+20%)	4
LA TROBE	7	5	3	+2	(+40%)	+4	(+133%)	6
MACEDON RANGES	8	8	6	0	(0%)	+2	(+33%)	7
MANNINGHAM	1	1	0	0	(0%)	+1		1
MARIBYRNONG	3	1	2	+2	(+200%)	+1	(+50%)	2
MAROONDAH	1	2	0	-1	(-50%)	+1		2
MELBOURNE	1	8	3	-7	(-88%)	-2	(-67%)	4
MELTON	4	7	8	-3	(-43%)	-4	(-50%)	6
MILDURA	4	2	6	+2	(+100%)	-2	(-33%)	3
MITCHELL	10	7	6	+3	(+43%)	+4	(+67%)	8
MONASH	3	2	4	+1	(+50%)	-1	(-25%)	3
MOONEE VALLEY	2	4	4	-2	(-50%)	-2	(-50%)	2
MOORABOOL	6	8	8	-2	(-25%)	-2	(-25%)	8
MORELAND	1	6	3	-5	(-83%)	-2	(-67%)	3
MORNINGTON PENINSULA	11	11	5	0	(0%)	+6	(+120%)	7
NILLUMBIK	2	3	0	-1	(-33%)	+2		2
NORTHERN GRAMPPIANS	5	2	9	+3	(+150%)	-4	(-44%)	5
PORT PHILLIP	2	0	5	+2		-3	(-60%)	2
SHEPPARTON	6	5	3	+1	(+20%)	+3	(+100%)	7
SOUTHERN GRAMPPIANS	4	9	1	-5	(-56%)	+3	(+300%)	5
STONNINGTON	2	4	3	-2	(-50%)	-1	(-33%)	3
SURF COAST	7	6	4	+1	(+17%)	+3	(+75%)	6
SWAN HILL	4	4	9	0	(0%)	-5	(-56%)	5
WANGARATTA	11	7	8	+4	(+57%)	+3	(+38%)	9
WARRNAMBOOL	5	13	11	-8	(-62%)	-6	(-55%)	8
WELLINGTON	3	3	6	0	(0%)	-3	(-50%)	4
WHITEHORSE	2	4	3	-2	(-50%)	-1	(-33%)	3
WHITTLESEA	5	4	5	+1	(+25%)	0	(0%)	5
WODONGA	4	8	5	-4	(-50%)	-1	(-20%)	5
WYNDHAM	6	6	2	0	(0%)	+4	(+200%)	6
YARRA	2	1	0	+1	(+100%)	+2		1
YARRA RANGES	10	4	10	+6	(+150%)	0	(0%)	8

Claims involving acute hospitalisation over 14 days: 12 months to October 2015 (claim acceptance date)

Category	2015	2014	2013	2015 v 2014		2015 v 2013		5 Year Av
Overview								
Claims	954	888	906	+66	(+7%)	+48	(+5%)	914
Sex								
Female	416	348	388	+68	(+20%)	+28	(+7%)	381
Male	537	538	517	-1	(-0%)	+20	(+4%)	533
Roaduser								
Driver	355	354	387	+1	(+0%)	-32	(-8%)	361
Passenger	148	136	143	+12	(+9%)	+5	(+3%)	146
Motorcyclist	179	168	128	+11	(+7%)	+51	(+40%)	160
Pedestrian	180	173	201	+7	(+4%)	-21	(-10%)	185
Cyclist	45	34	27	+11	(+32%)	+18	(+67%)	37
Train/Tram	9	9	4	0	(0%)	+5	(+125%)	7
Location								
Melbourne	633	541	588	+92	(+17%)	+45	(+8%)	589
Rural Victoria	295	326	314	-31	(-10%)	-19	(-6%)	313
Agegroup								
0-4	5	2	2	+3	(+150%)	+3	(+150%)	3
5-15	21	13	9	+8	(+62%)	+12	(+133%)	15
16-17	12	12	16	0	(0%)	-4	(-25%)	17
18-20	45	53	65	-8	(-15%)	-20	(-31%)	54
21-25	88	84	77	+4	(+5%)	+11	(+14%)	84
26-29	58	52	33	+6	(+12%)	+25	(+76%)	52
30-39	109	110	107	-1	(-1%)	+2	(+2%)	111
40-49	119	104	119	+15	(+14%)	0	(0%)	116
50-59	128	108	96	+20	(+19%)	+32	(+33%)	109
60-69	104	99	112	+5	(+5%)	-8	(-7%)	106
70+	265	250	269	+15	(+6%)	-4	(-1%)	246
Alcetime								
High (Melb)	257	202	266	+55	(+27%)	-9	(-3%)	250
High (Rural)	111	128	116	-17	(-13%)	-5	(-4%)	122
High (Vic)	368	330	382	+38	(+12%)	-14	(-4%)	372
Low (Melb)	376	339	322	+37	(+11%)	+54	(+17%)	339
Low (Rural)	184	198	198	-14	(-7%)	-14	(-7%)	191
Low (Vic)	560	537	520	+23	(+4%)	+40	(+8%)	530
Accident Type								
Intersection								
Adjacent direction	97	99	132	-2	(-2%)	-35	(-27%)	113
Opposing direction	61	63	65	-2	(-3%)	-4	(-6%)	63
Mid-block/other								
Head on	94	88	76	+6	(+7%)	+18	(+24%)	85
Same direction	96	71	68	+25	(+35%)	+28	(+41%)	85
Manoeuvre/o'taking	60	53	63	+7	(+13%)	-3	(-5%)	57
On path	31	27	21	+4	(+15%)	+10	(+48%)	24
Single vehicle	287	270	232	+17	(+6%)	+55	(+24%)	259
Other (incl peds)	228	216	248	+12	(+6%)	-20	(-8%)	228

Note: Excludes rejected claims and claims for interstate crashes.

Claims involving acute hospitalisation over 14 days: 12 months to October 2015 (claim acceptance date) – Continued

Category	2015	2014	2013	2015 v 2013		2015 v 2014		5 Year Av
Police Service Area (based on Local Government Area (see p.13))								
BALLARAT	18	20	17	-2	(-10%)	+1	(+6%)	17
BANYULE	11	9	10	+2	(+22%)	+1	(+10%)	10
BASS COAST	16	21	16	-5	(-24%)	0	(0%)	17
BAW BAW	10	8	8	+2	(+25%)	+2	(+25%)	10
BENALLA	24	20	16	+4	(+20%)	+8	(+50%)	21
BENDIGO	12	12	18	0	(0%)	-6	(-33%)	15
BOROONDARA	19	28	18	-9	(-32%)	+1	(+6%)	23
BRIMBANK	35	22	19	+13	(+59%)	+16	(+84%)	26
CAMPASPE	9	6	7	+3	(+50%)	+2	(+29%)	7
CARDINIA	17	12	12	+5	(+42%)	+5	(+42%)	15
CASEY	35	23	33	+12	(+52%)	+2	(+6%)	27
CENTRAL GOLDFIELDS	4	5	7	-1	(-20%)	-3	(-43%)	6
DAREBIN	14	16	18	-2	(-13%)	-4	(-22%)	16
EAST GIPPSLAND	10	9	7	+1	(+11%)	+3	(+43%)	11
FRANKSTON	18	12	15	+6	(+50%)	+3	(+20%)	15
GEE LONG	22	29	34	-7	(-24%)	-12	(-35%)	29
GLEN EIRA	23	26	34	-3	(-12%)	-11	(-32%)	29
GREATER DANDENONG	14	29	31	-15	(-52%)	-17	(-55%)	26
HOBSONS BAY	12	8	9	+4	(+50%)	+3	(+33%)	10
HORSHAM	5	8	5	-3	(-38%)	0	(0%)	8
HUME	34	17	29	+17	(+100%)	+5	(+17%)	27
KINGSTON	25	22	27	+3	(+14%)	-2	(-7%)	22
KNOX	19	14	20	+5	(+36%)	-1	(-5%)	18
LA TROBE	16	8	13	+8	(+100%)	+3	(+23%)	15
MACEDON RANGES	13	26	18	-13	(-50%)	-5	(-28%)	17
MANNINGHAM	10	12	13	-2	(-17%)	-3	(-23%)	14
MARIBY RNONG	11	5	12	+6	(+120%)	-1	(-8%)	12
MAROONDAH	6	5	7	+1	(+20%)	-1	(-14%)	8
MELBOURNE	32	31	31	+1	(+3%)	+1	(+3%)	31
MELTON	20	12	11	+8	(+67%)	+9	(+82%)	15
MILDURA	4	10	6	-6	(-60%)	-2	(-33%)	8
MITCHELL	16	23	17	-7	(-30%)	-1	(-6%)	19
MONASH	25	21	20	+4	(+19%)	+5	(+25%)	22
MOONEE VALLEY	18	23	15	-5	(-22%)	+3	(+20%)	18
MOORABOOL	20	18	18	+2	(+11%)	+2	(+11%)	16
MORELAND	30	21	37	+9	(+43%)	-7	(-19%)	27
MORNINGTON PENINSULA	29	23	27	+6	(+26%)	+2	(+7%)	29
NILLUMBIK	11	5	6	+6	(+120%)	+5	(+83%)	7
NORTHERN GRAMPPIANS	12	10	14	+2	(+20%)	-2	(-14%)	9
PORT PHILLIP	19	20	11	-1	(-5%)	+8	(+73%)	15
SHEPPARTON	11	10	12	+1	(+10%)	-1	(-8%)	11
SOUTHERN GRAMPPIANS	8	10	9	-2	(-20%)	-1	(-11%)	9
STONNINGTON	20	14	13	+6	(+43%)	+7	(+54%)	17
SURF COAST	15	13	12	+2	(+15%)	+3	(+25%)	13
SWAN HILL	11	9	6	+2	(+22%)	+5	(+83%)	8
WANGARATTA	15	13	19	+2	(+15%)	-4	(-21%)	16
WARRNAMBOOL	8	12	17	-4	(-33%)	-9	(-53%)	13
WELLINGTON	7	13	7	-6	(-46%)	0	(0%)	9
WHITEHORSE	16	21	15	-5	(-24%)	+1	(+7%)	19
WHITTLESEA	32	14	24	+18	(+129%)	+8	(+33%)	23
WODONGA	9	13	11	-4	(-31%)	-2	(-18%)	11
WYNDHAM	19	32	22	-13	(-41%)	-3	(-14%)	22
YARRA	15	13	14	+2	(+15%)	+1	(+7%)	13
YARRA RANGES	44	31	35	+13	(+42%)	+9	(+26%)	33

Note: excludes rejected claims and claims for interstate crashes

Claims involving an acute hospital admission: 12 months to October 2015 (claim acceptance date)

Category	2015	2014	2013	2015 v 2014	2015 v 2013	5 Year Av
Overview						
Claims	6,097	6,003	5,459	+94 (+2%)	+638 (+12%)	5,815
Sex						
Female	2,665	2,516	2,234	+149 (+6%)	+431 (+19%)	2,469
Male	3,429	3,478	3,223	-49 (-1%)	+206 (+6%)	3,342
Roaduser						
Driver	2,797	2,672	2,493	+125 (+5%)	+304 (+12%)	2,664
Passenger	1,019	1,045	900	-26 (-2%)	+119 (+13%)	1,010
Motorcyclist	1,078	1,160	916	-82 (-7%)	+162 (+18%)	998
Pedestrian	606	615	649	-9 (-1%)	-43 (-7%)	637
Cyclist	387	375	386	+12 (+3%)	+1 (+0%)	371
Train/Tram	29	32	29	-3 (-9%)	0 (0%)	27
Location						
Melbourne	4,103	4,039	3,697	+64 (+2%)	+406 (+11%)	3,919
Rural Victoria	1,775	1,751	1,729	+24 (+1%)	+46 (+3%)	1,793
Agegroup						
0-4	41	49	53	-8 (-16%)	-12 (-23%)	49
5-15	240	176	174	+64 (+36%)	+66 (+38%)	196
16-17	107	101	93	+6 (+6%)	+14 (+15%)	109
18-20	449	513	475	-64 (-12%)	-26 (-5%)	504
21-25	706	790	661	-84 (-11%)	+45 (+7%)	725
26-29	499	484	390	+15 (+3%)	+109 (+28%)	447
30-39	984	902	793	+82 (+9%)	+191 (+24%)	899
40-49	873	910	842	-37 (-4%)	+31 (+4%)	867
50-59	784	754	673	+30 (+4%)	+111 (+16%)	729
60-69	582	534	507	+48 (+9%)	+75 (+15%)	528
70+	839	789	797	+50 (+6%)	+42 (+5%)	765
Altime						
High (Melb)	1,692	1,702	1,596	-10 (-1%)	+96 (+6%)	1,709
High (Rural)	701	705	684	-4 (-1%)	+17 (+2%)	738
High (Vic)	2,393	2,407	2,280	-14 (-1%)	+113 (+5%)	2,447
Low (Melb)	2,411	2,337	2,101	+74 (+3%)	+310 (+15%)	2,209
Low (Rural)	1,074	1,046	1,045	+28 (+3%)	+29 (+3%)	1,055
Low (Vic)	3,485	3,383	3,146	+102 (+3%)	+339 (+11%)	3,264
Accident Type						
Intersection						
Adjacent direction	769	780	821	-11 (-1%)	-52 (-6%)	818
Opposing direction	526	518	489	+8 (+2%)	+37 (+8%)	499
Mid-block/other						
Head on	293	346	281	-53 (-15%)	+12 (+4%)	320
Same direction	937	856	791	+81 (+9%)	+146 (+18%)	887
Manoeuvre/o'taking	368	310	325	+58 (+19%)	+43 (+13%)	329
On path	288	282	238	+6 (+2%)	+50 (+21%)	247
Single vehicle	1,708	1,719	1,447	-11 (-1%)	+261 (+18%)	1,615
Other (incl peds)	1,215	1,191	1,066	+24 (+2%)	+149 (+14%)	1,101

Note: excludes rejected claims and claims for interstate crashes

Claims involving an acute hospital admission: 12 months to October 2015 (claim acceptance date) – Continued

Category	2015	2014	2013	2015 v 2014		2015 v 2013		5 Year Av
Police Service Area (based on Local Government Area (see p.13))								
BALLARAT	89	83	105	+6	(+7%)	-16	(-15%)	96
BANYULE	39	70	54	-31	(-44%)	-15	(-28%)	59
BASS COAST	80	89	79	-9	(-10%)	+1	(+1%)	82
BAW BAW	47	69	52	-22	(-32%)	-5	(-10%)	58
BENALLA	115	104	107	+11	(+11%)	+8	(+7%)	115
BENDIGO	113	76	85	+37	(+49%)	+28	(+33%)	100
BOROONDARA	136	133	148	+3	(+2%)	-12	(-8%)	137
BRIMBANK	141	147	135	-6	(-4%)	+6	(+4%)	153
CAMPASPE	38	32	36	+6	(+19%)	+2	(+6%)	36
CARDINIA	108	125	82	-17	(-14%)	+26	(+32%)	102
CASEY	306	255	219	+51	(+20%)	+87	(+40%)	251
CENTRAL GOLDFIELDS	20	37	25	-17	(-46%)	-5	(-20%)	27
DAREBIN	86	94	96	-8	(-9%)	-10	(-10%)	95
EAST GIPPSLAND	65	46	64	+19	(+41%)	+1	(+2%)	64
FRANKSTON	141	114	111	+27	(+24%)	+30	(+27%)	131
GEELONG	230	216	210	+14	(+6%)	+20	(+10%)	225
GLEN EIRA	173	194	181	-21	(-11%)	-8	(-4%)	176
GREATER DANDENONG	242	280	223	-38	(-14%)	+19	(+9%)	230
HOBSONS BAY	71	60	53	+11	(+18%)	+18	(+34%)	63
HORSHAM	44	32	30	+12	(+38%)	+14	(+47%)	37
HUME	192	183	144	+9	(+5%)	+48	(+33%)	161
KINGSTON	134	161	132	-27	(-17%)	+2	(+2%)	137
KNOX	113	121	87	-8	(-7%)	+26	(+30%)	111
LA TROBE	55	52	75	+3	(+6%)	-20	(-27%)	64
MACEDON RANGES	93	96	101	-3	(-3%)	-8	(-8%)	89
MANNINGHAM	80	57	75	+23	(+40%)	+5	(+7%)	69
MARIBY RNONG	75	61	80	+14	(+23%)	-5	(-6%)	80
MAROONDAH	59	55	56	+4	(+7%)	+3	(+5%)	60
MELBOURNE	248	234	253	+14	(+6%)	-5	(-2%)	244
MELTON	99	65	78	+34	(+52%)	+21	(+27%)	79
MILDURA	31	42	33	-11	(-26%)	-2	(-6%)	37
MITCHELL	98	110	86	-12	(-11%)	+12	(+14%)	93
MONASH	194	204	176	-10	(-5%)	+18	(+10%)	183
MOONEE VALLEY	124	120	106	+4	(+3%)	+18	(+17%)	114
MOORABOOL	92	102	124	-10	(-10%)	-32	(-26%)	101
MORELAND	147	147	156	0	(0%)	-9	(-6%)	146
MORNINGTON PENINSUL	164	146	120	+18	(+12%)	+44	(+37%)	156
NILLUMBIK	43	29	37	+14	(+48%)	+6	(+16%)	39
NORTHERN GRAMPIANS	50	42	41	+8	(+19%)	+9	(+22%)	41
PORT PHILLIP	147	147	112	0	(0%)	+35	(+31%)	127
SHEPPARTON	83	65	55	+18	(+28%)	+28	(+51%)	68
SOUTHERN GRAMPIANS	37	54	44	-17	(-31%)	-7	(-16%)	46
STONNINGTON	144	147	126	-3	(-2%)	+18	(+14%)	133
SURF COAST	81	71	57	+10	(+14%)	+24	(+42%)	69
SWAN HILL	36	43	31	-7	(-16%)	+5	(+16%)	37
WANGARATTA	97	96	96	+1	(+1%)	+1	(+1%)	98
WARRNAMBOOL	57	63	69	-6	(-10%)	-12	(-17%)	75
WELLINGTON	65	82	58	-17	(-21%)	+7	(+12%)	73
WHITEHORSE	101	105	108	-4	(-4%)	-7	(-6%)	111
WHITTLESEA	152	126	151	+26	(+21%)	+1	(+1%)	138
WODONGA	59	49	66	+10	(+20%)	-7	(-11%)	62
WYNDHAM	143	185	131	-42	(-23%)	+12	(+9%)	150
YARRA	122	106	103	+16	(+15%)	+19	(+18%)	107
YARRA RANGES	179	168	164	+11	(+7%)	+15	(+9%)	176

Note: excludes rejected claims and claims for interstate crashes

Fatalities: Victorian monthly totals since 1951

Year	Jan	Feb	Mar	Apr	May	Jun	Jul	Aug	Sep	Oct	Nov	Dec	Totals
1951							61	59	52	38	29	41	
1952	45	40	54	61	54	69	67	55	44	44	31	20	584
1953	23	28	54	58	49	42	50	37	44	27	36	32	480
1954	44	42	28	60	55	36	63	33	25	52	30	41	509
1955	44	36	45	55	48	56	64	44	44	32	40	40	548
1956	34	48	51	67	53	65	71	47	39	39	44	48	606
1957	50	41	46	58	52	54	57	53	51	46	32	49	589
1958	50	38	42	58	54	41	54	53	57	40	57	52	596
1959	50	57	61	50	75	55	42	48	52	55	63	63	671
1960	49	53	57	76	70	70	67	62	61	77	52	66	760
1961	63	57	68	74	58	68	78	82	59	62	60	65	794
1962	65	41	76	78	72	80	70	77	62	53	64	70	808
1963	67	56	65	85	66	68	77	55	55	58	61	67	780
1964	73	71	78	71	83	89	80	89	67	66	62	75	904
1965	63	64	86	88	80	87	79	69	81	77	68	87	929
1966	75	59	75	103	74	86	87	80	75	66	90	85	955
1967	61	79	91	97	81	71	59	67	70	68	60	83	887
1968	70	78	86	78	73	76	73	77	72	80	81	105	949
1969	79	68	79	87	86	77	87	83	87	83	94	101	1,011
1970	85	84	106	80	87	88	110	106	78	95	68	74	1,061
1971	83	75	77	68	76	86	85	72	78	73	74	76	923
1972	61	62	75	82	75	71	98	85	83	62	80	81	915
1973	75	75	95	85	64	66	61	85	89	88	66	86	935
1974	56	62	81	60	70	73	67	62	53	70	80	72	806
1975	67	65	87	73	97	94	57	75	69	66	71	89	910
1976	79	78	88	78	69	79	60	70	82	78	77	100	938
1977	65	71	89	79	65	79	70	91	68	74	96	107	954
1978	75	54	95	63	64	69	68	77	65	84	83	72	869
1979	63	60	86	75	45	64	66	75	69	79	72	93	847
1980	48	55	66	59	47	56	60	53	45	58	61	49	657
1981	69	60	58	61	74	65	61	63	68	71	59	57	766
1982	55	53	59	59	67	45	47	71	53	69	65	66	709
1983	42	59	53	63	62	61	65	51	59	43	54	52	664
1984	65	48	58	50	56	48	46	50	71	53	55	58	658
1985	56	47	50	65	75	50	51	50	58	61	56	64	683
1986	56	50	70	69	59	53	42	54	54	52	59	51	669
1987	62	43	57	52	63	59	62	49	62	61	55	80	705
1988	49	58	69	54	79	50	54	52	64	59	43	70	701
1989	76	65	80	59	67	73	52	65	82	50	41	66	776
1990	48	44	55	39	56	64	41	34	48	35	40	44	548
1991	45	39	70	30	34	29	44	47	41	36	35	53	503
1992	34	33	34	47	33	29	23	27	28	38	30	40	396
1993	27	40	37	39	44	33	33	27	34	39	43	40	436
1994	36	31	44	35	27	33	29	37	17	27	32	30	378
1995	38	35	26	33	34	41	27	34	34	32	38	46	418
1996	40	47	35	38	28	29	30	35	49	24	33	30	418
1997	36	25	30	30	40	22	39	26	26	29	39	35	377
1998	29	29	32	36	31	22	40	19	37	36	49	30	390
1999	32	31	35	35	34	24	35	26	28	38	29	37	384
2000	32	26	46	32	39	32	33	29	36	29	44	29	407
2001	44	30	31	32	31	41	34	37	35	51	41	37	444
2002	32	31	45	31	45	32	27	25	31	30	31	37	397
2003	21	41	36	28	31	28	20	23	23	24	24	31	330
2004	32	22	30	30	46	28	27	26	22	28	25	27	343
2005	33	27	47	21	29	23	30	25	25	33	17	36	346
2006	24	37	23	23	27	23	25	22	43	20	31	39	337
2007	23	23	32	25	26	28	28	20	23	37	26	41	332
2008	28	20	37	25	25	20	27	27	18	25	26	25	303
2009	31	18	23	32	19	30	19	21	14	28	21	34	290
2010	26	25	23	20	31	26	26	18	17	36	12	28	288
2011	18	20	34	31	30	24	25	14	12	22	30	27	287
2012	30	20	25	19	23	22	17	25	17	34	26	24	282
2013	14	24	24	19	18	13	24	20	19	15	23	30	243
2014	25	21	25	14	23	17	22	21	20	19	28	13	248
2015	24	20	22	22	21	22	18	26	14	27	19	17	252
2016	21	34	26	18									
Ave	48	46	55	53	53	51	51	49	49	49	49	54	608
Max	85	84	106	103	97	94	110	106	89	95	96	107	1,061
Min	14	18	22	14	18	13	17	14	12	15	12	13	243

Fatalities by Week (2009 to 2016)

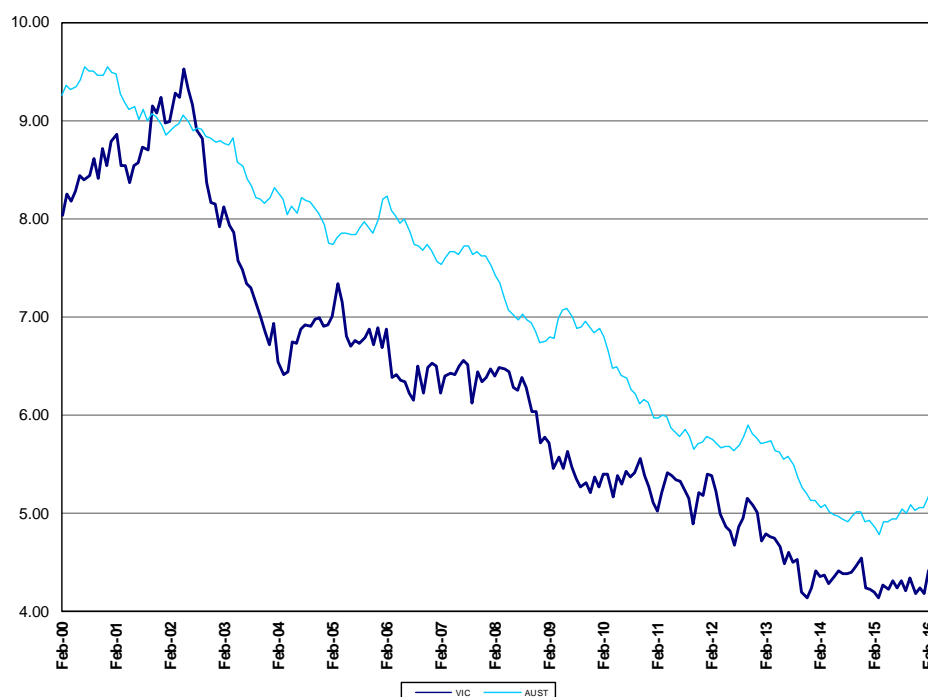
Week Ending	2009	2010	2011	2012	2013	2014	2015	2016	Cumulative 2016	% Change 2016-2015
5-Jan	7	3	2	3	1	0	2	7	2	-
12-Jan	10	5	6	7	3	5	5	10	17	+143%
19-Jan	4	6	3	8	6	7	6	4	21	+62%
26-Jan	4	5	4	9	4	9	2	4	25	+19%
2-Feb	6	9	6	5	3	6	10	6	31	+15%
9-Feb	6	7	5	3	8	4	6	6	37	+19%
16-Feb	7	4	6	7	6	8	4	7	44	+13%
23-Feb	4	8	3	6	6	2	6	4	48	+17%
2-Mar	1	7	3	2	2	6	4	1	49	+4%
9-Mar	3	2	10	3	4	8	8	3	52	-5%
16-Mar	6	8	6	11	6	4	6	6	58	-2%
23-Mar	6	3	9	5	10	4	2	6	64	+2%
30-Mar	8	7	9	6	2	6	3	8	72	+4%
6-Apr	5	4	6	7	4	6	3	5	77	+3%
13-Apr	5	5	9	2	6	6	6	5	82	+12%
20-Apr	11	7	7	6	4	2	8	11	93	+15%
27-Apr	9	1	6	3	5	2	5	9	102	+20%
4-May	6	6	6	10	6	3	4			
11-May	7	8	6	2	3	4	6			
18-May	1	4	7	4	1	3	4			
25-May	2	11	10	6	2	5	4			
1-Jun	6	5	5	2	9	9	5			
8-Jun	4	7	4	8	2	2	5			
15-Jun	9	4	6	3	3	2	4			
22-Jun	7	8	7	8	5	3	4			
29-Jun	9	7	6	3	1	8	5			
6-Jul	3	7	4	2	5	6	10			
13-Jul	6	2	8	5	7	7	2			
20-Jul	4	3	6	5	4	3	2			
27-Jul	5	8	6	5	5	4	3			
3-Aug	4	10	3	1	8	4	6			
10-Aug	7	3	5	5	1	5	4			
17-Aug	6	5	3	5	3	6	9			
24-Aug	3	5	2	6	6	4	7			
31-Aug	3	1	3	8	5	5	3			
7-Sep	2	5	1	5	5	4	4			
14-Sep	4	1	4	6	2	6	3			
21-Sep	4	4	1	3	3	4	2			
28-Sep	3	5	5	3	8	3	6			
5-Oct	2	9	4	7	3	4	4			
12-Oct	6	10	5	8	2	8	6			
19-Oct	8	5	3	9	3	0	6			
26-Oct	8	7	3	6	3	8	8			
2-Nov	5	8	8	6	6	2	5			
9-Nov	3	1	6	7	8	3	5			
16-Nov	9	2	12	6	2	8	4			
23-Nov	6	3	9	5	8	3	2			
30-Nov	4	5	2	9	4	13	5			
7-Dec	5	4	10	7	6	5	8			
14-Dec	8	8	3	4	10	2	5			
21-Dec	11	6	7	1	9	3	2			
28-Dec	6	8	6	8	4	3	5			
31-Dec	2	2	1	1	1	1	1			
Total	290	288	287	282	243	248	254	102		

The National Picture

State	Fatalities (12 months to April)					2016 v 2015	
	2016	2015	2014	2013			
NSW	386	299	338	350	+87	(+29%)	
VIC	264	251	247	269	+13	(+5%)	
QLD	244	235	236	296	+9	(+4%)	
SA	103	107	93	93	-4	(-4%)	
WA	168	183	170	176	-15	(-8%)	
TAS	41	36	37	35	+5	(+14%)	
NT	52	38	40	47	+14	(+37%)	
ACT	15	8	7	15	+7	(+88%)	
AUST TOTAL	1,273	1,157	1,168	1,281	+116	(+10%)	
AUST minus VIC	1,009	906	921	1,012	+103	(+11%)	

State	Fatalities per 10,000 registered vehicles (12 months to April)			Fatalities per 100,000 population (12 months to April)		
	2016	2015	2014	2016	2015	2014
NSW	0.72	0.58	0.67	5.04	3.96	4.54
VIC	0.57	0.55	0.55	4.42	4.27	4.28
QLD	0.64	0.63	0.64	5.09	4.96	5.04
SA	0.76	0.80	0.70	6.05	6.33	5.55
WA	0.76	0.84	0.80	6.47	7.09	6.70
TAS	0.90	0.80	0.84	7.93	6.99	7.20
NT	3.31	2.46	2.64	21.27	15.52	16.57
ACT	0.52	0.28	0.25	3.82	2.06	1.82
AUST TOTAL	0.70	0.65	0.67	5.33	4.91	5.02
AUST minus VIC	0.74	0.68	0.71	5.65	5.09	5.25

Deaths per 100,000 population, Victoria v Australia 2000 - 2016



Victoria v Australia - 12 Month Moving Fatality Rate

Booze-Bus Random Breath Testing

12 months to March 2016 (monthly totals)

	2015									2016		
	Apr	May	Jun	Jul	Aug	Sep	Oct	Nov	Dec	Jan	Feb	Mar
Melbourne	74,387	70,603	63,988	64,557	78,225	79,794	87,587	90,741	97,335	94,950	84,870	74,906
Country	3,095	7,283	10,186	2,833	3,734	4,598	6,184	7,167	4,673	7,818	4,079	8,676
Vic Total	77,482	77,886	74,174	67,390	81,959	84,392	93,771	97,908	102,008	102,768	88,949	83,582

12 months to March 2016 vs previous 12 months

	2016	2015	2014	2016 v 2015	2016 v 2014
Melbourne	961,943	1,172,395	1,060,175	-210452 (-18%)	-98232 (-9%)
Country	70,326	99,088	90,264	-28762 (-29%)	-19938 (-22%)
Vic Total	1,032,269	1,271,483	1,150,439	-239214 (-19%)	-118170 (-10%)

Mobile Safety Camera Data

Speed Infringements Issued from Mobile Cameras (monthly totals)

Monthly Average = 32,484

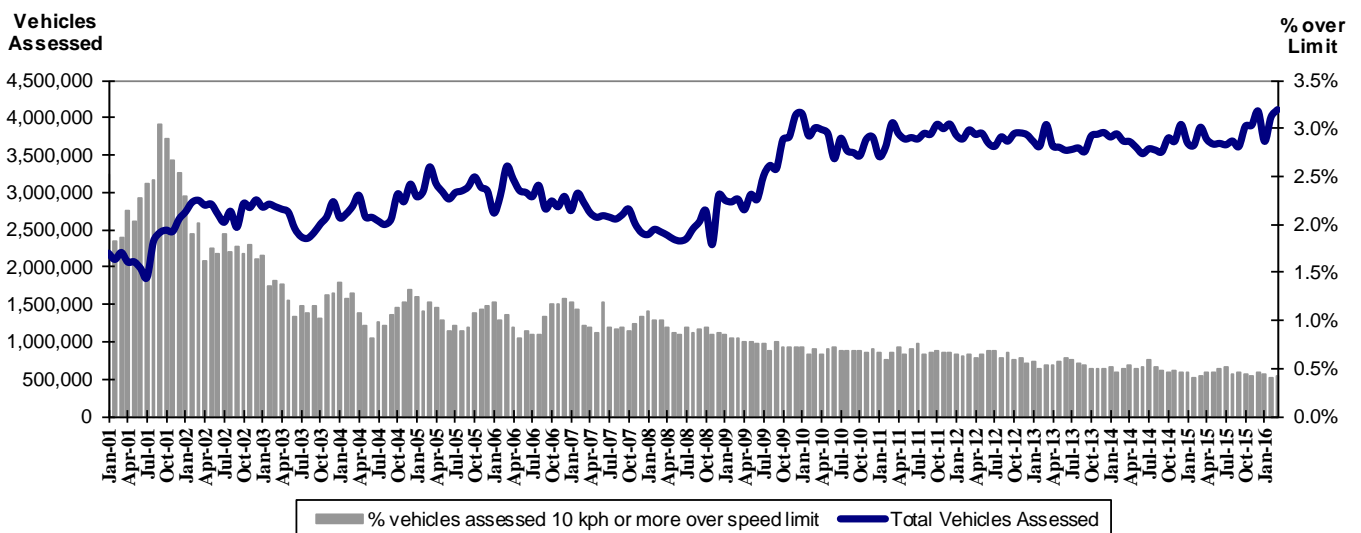
2015	2016											
	Apr	May	Jun	Jul	Aug	Sep	Oct	Nov	Dec	Jan	Feb	Mar
	33,790	30,434	33,386	36,437	31,001	29,975	34,436	29,747	35,684	32,312	31,573	31,038

Excessive Speed Infringements (ESI) Issued from Mobile Cameras (monthly totals)

Monthly Average = 317

2015	2016											
	Apr	May	Jun	Jul	Aug	Sep	Oct	Nov	Dec	Jan	Feb	Mar
	335	258	342	338	312	283	352	243	366	274	353	348

Notes: An ESI is defined as 25km/h over the speed limit except in a 110km/h zone where it is 20km/h over the limit.



Mobile Safety Cameras – Vehicles assessed and percentage of vehicles assessed 10km/h or more over speed limit per month

Explanations and References

Hi-AlcTime is those times of the day and week (*shaded* in the table below) when casualty crashes are ten times more likely to involve alcohol than casualty crashes at other (Lo-AlcTime) times.

	12am - 6am	6am - 8am	8am - 10am	10am - 2pm	2pm - 4pm	4pm - 6pm	6pm - 12pm
Monday							
Tuesday							
Wednesday							
Thursday							
Friday							
Saturday							
Sunday							

Police Service Areas align with Local Government Areas. Most Police Service Areas are equivalent to a single Local Government Area, while the remainder comprise two or three Local Government Areas.

Police Service Area	Local Government Area(s)	Police Service Area	Local Government Area(s)
BALLARAT	BALLARAT, PYRENEES	MAROONDAH	MAROONDAH
BANYULE	BANYULE	MELBOURNE	MELBOURNE
BASS COAST	BASS COAST, SOUTH GIPPSLAND	MELTON	MELTON
BAW BAW	BAWBAW	MILDURA	MILDURA
BENALLA	BENALLA, MANSFIELD, MURRINDINDI	MITCHELL	MITCHELL, STRATHBOGIE
BENDIGO	GREATER BENDIGO	MONASH	MONASH
BOROONDARA	BOROONDARA	MOONEE VALLEY	MOONEE VALLEY
BRIMBANK	BRIMBANK	MOORABOOL	GOLDEN PLAINS, HEPBURN, MOORABOOL
CAMPASPE	CAMPASPE	MORELAND	MORELAND
CARDINIA	CARDINIA	MORNINGTON PENINSULA	MORNINGTON PENINSULA
CASEY	CASEY	NILLUMBIK	NILLUMBIK
CENTRAL GOLDFIELDS	CENTRAL GOLDFIELDS, LODDON	NORTHERN GRAMPIANS	ARARAT, NORTHERN GRAMPIANS, YARRIAMBICK
GREATER DANDENONG	GREATER DANDENONG	PORT PHILLIP	PORT PHILLIP
DAREBIN	DAREBIN	SHEPPARTON	GREATER SHEPPARTON
EAST GIPPSLAND	EAST GIPPSLAND	SOUTHERN GRAMPIANS	GLENELG, SOUTHERN GRAMPIANS
FRANKSTON	FRANKSTON	STONNINGTON	STONNINGTON
GEELONG	GREATER GEELONG, QUEENSCLIFF	SURFCOAST	SURFCOAST, COLAC OTWAY
GLENEIRA	GLENEIRA, BAYSIDE	SWANHILL	BULOKE, GANNAWARRA, SWAN HILL
HOBSONS BAY	HOBSONSBAY	WANGARATTA	ALPINE, MOIRA, WANGARATTA
HORSHAM	HINDMARSH, HORSHAM, WESTWIMMERA	WARRNAMBOOL	CORANGAMITE, MOYNE, WARRNAMBOOL
HUME	HUME	WELLINGTON	WELLINGTON
KINGSTON	KINGSTON	WHITEHORSE	WHITEHORSE
KNOX	KNOX	WHITTLESEA	WHITTLESEA
LATROBE	LATROBE	WODONGA	INDIGO, TOWONG, WODONGA
MACEDON RANGES	MOUNT ALEXANDER, MACEDON RANGES	WYNDHAM	WYNDHAM
MANNINGHAM	MANNINGHAM	YARRA	YARRA
MARIBYRNONG	MARIBYRNONG	YARRA RANGES	YARRA RANGES

Useful Internet Sites

TAC Sites

- TAC Safety (Road Safety) www.tacsafety.com.au
- TAC How safe is your car www.howsafeisyourcar.com.au
- TAC Learners Log www.learnerslog.com.au
- TAC Motorcycle Safety Website www.spokes.com.au
- TAC Corporate site www.tac.vic.gov.au

Victorian Sites:

- VicRoads www.vicroads.vic.gov.au
- Victoria Police www.police.vic.gov.au
- Parliamentary Road Safety Committee www.parliament.vic.gov.au/rsc/
- ARRB Transport Research www.arrb.com.au
- RACV www.racv.com.au
- Monash University Accident Research Centre www.monash.edu.au/muarc
- Roadsafe www.roadsafe.org.au
- Cameras Save Lives www.camerassavelives.vic.gov.au

National and Interstate Sites:

- Australian Transport Safety Bureau www.atsb.gov.au
- Roads and Traffic Authority (NSW) www.rta.nsw.gov.au
- Queensland Transport - Road Safety transport.qld.gov.au/Home/Safety/Road
- Department of Transport (SA) www.transport.sa.gov.au/index.htm
- Main Roads Western Australia - Road Safety www.mrwa.wa.gov.au

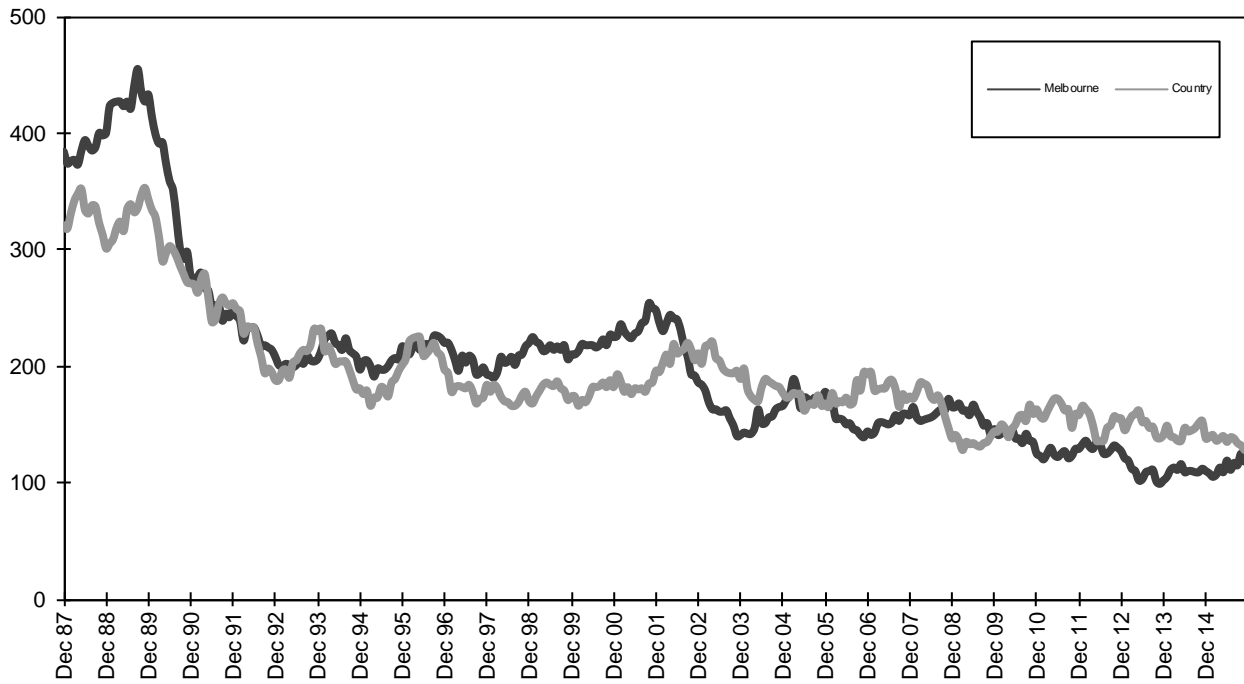
International Sites:

- National Highway Traffic Safety Admin (USA) www.nhtsa.dot.gov
- Swedish Road and Transport Institute (VTI) www.vti.se
- SWOV Institute for Road Safety Research www.swov.nl

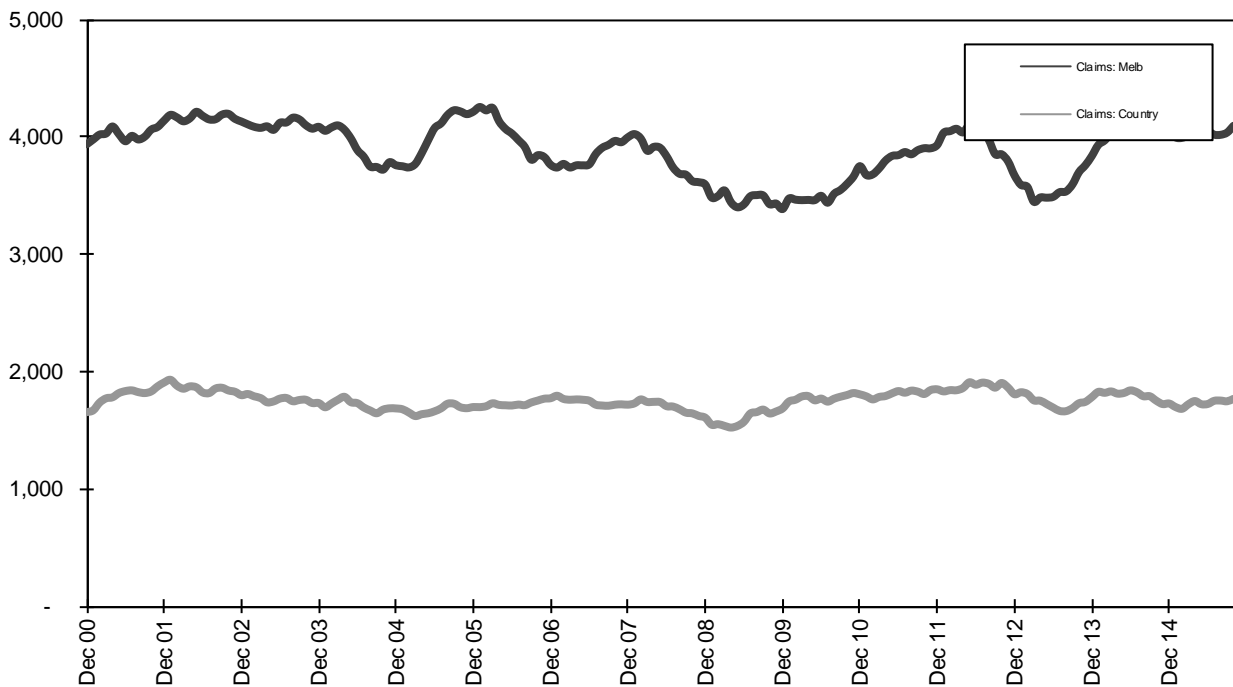
Related Sites:

- Australian Drug Foundation www.adf.org.au
- Amy Gillett Foundation www.amygillett.org.au

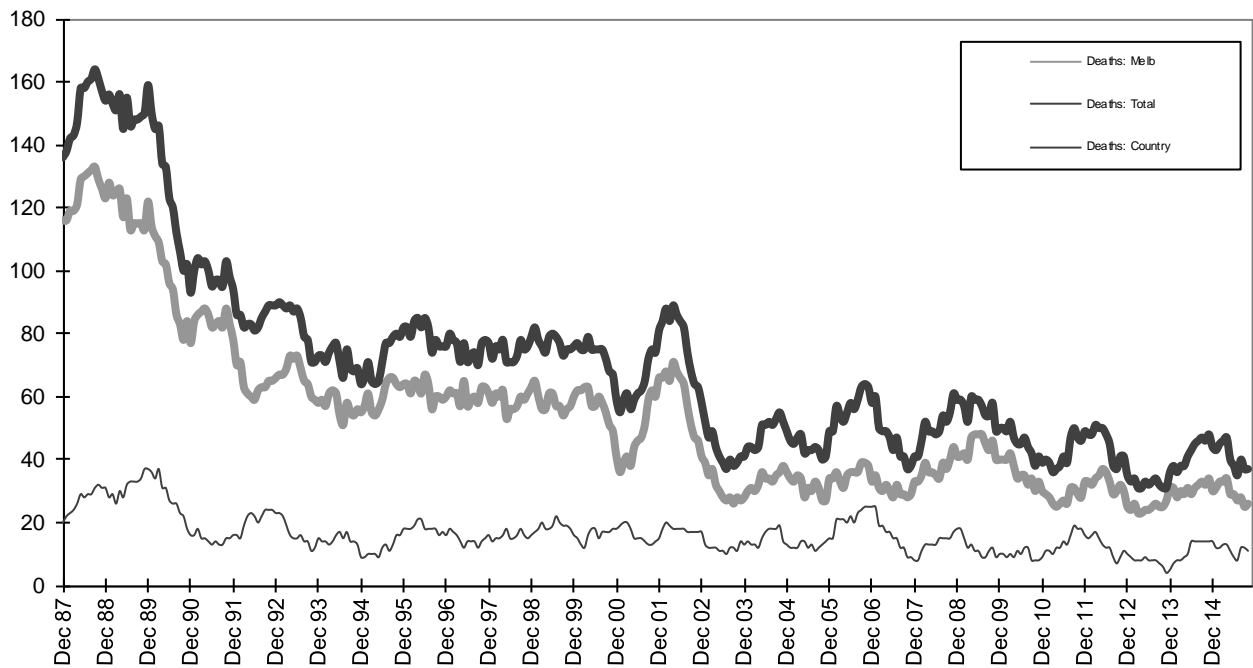
Figures



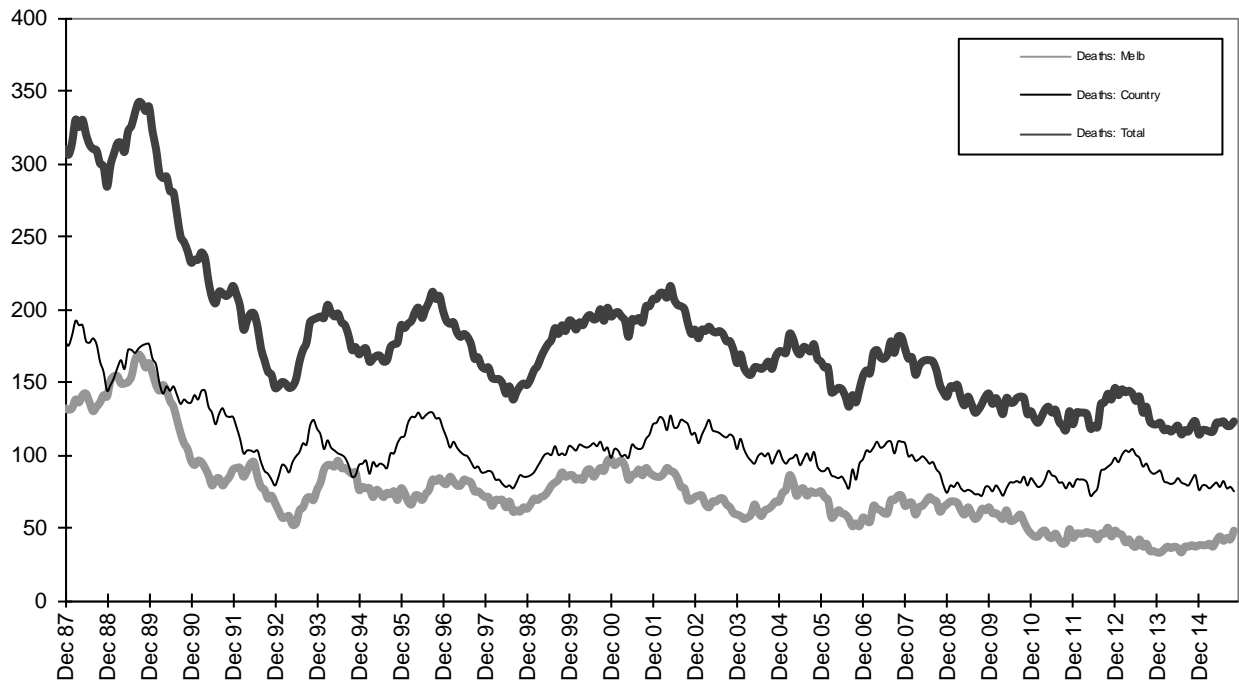
Graph 1a - Melbourne/country fatalities



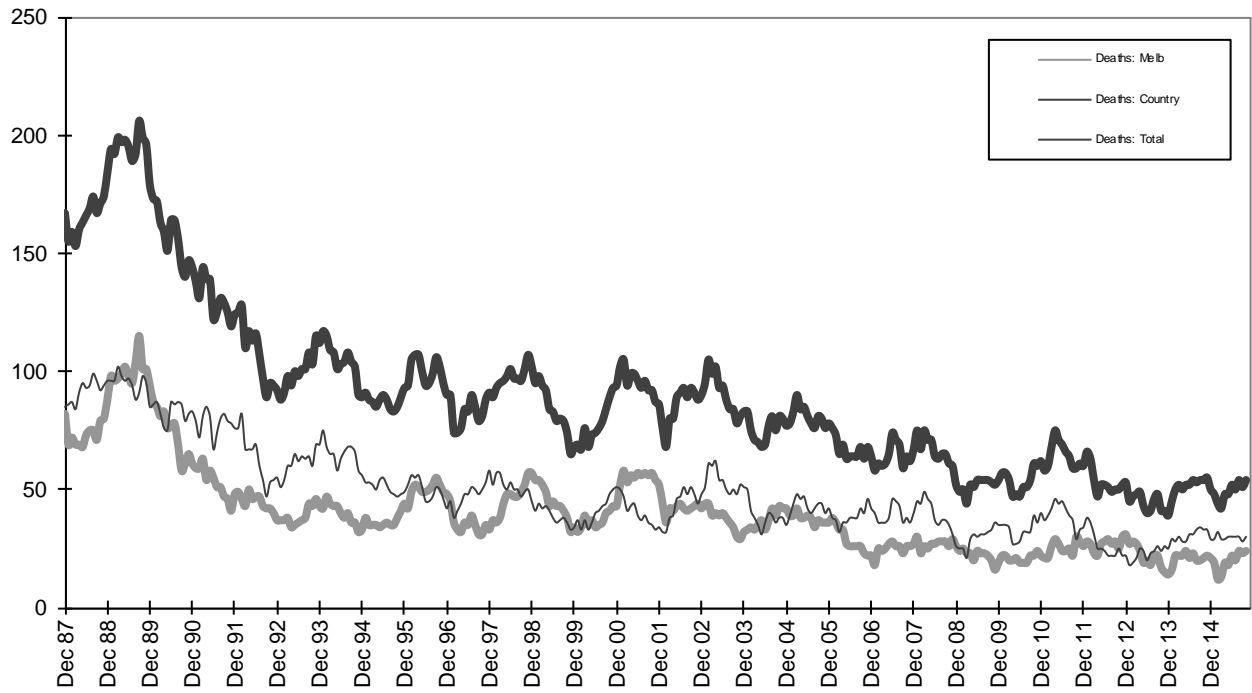
Graph 1b - Melbourne/country Claims involving an acute hospital admission



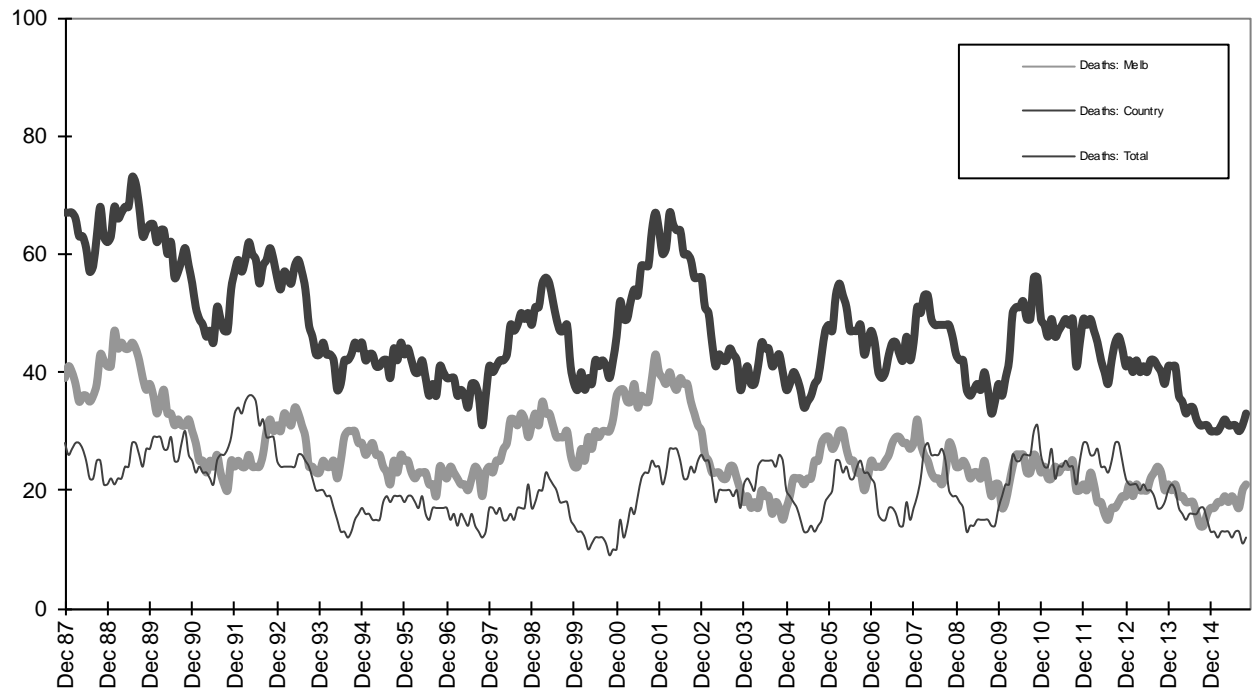
Graph 2a - Pedestrian fatalities (Melbourne/country)



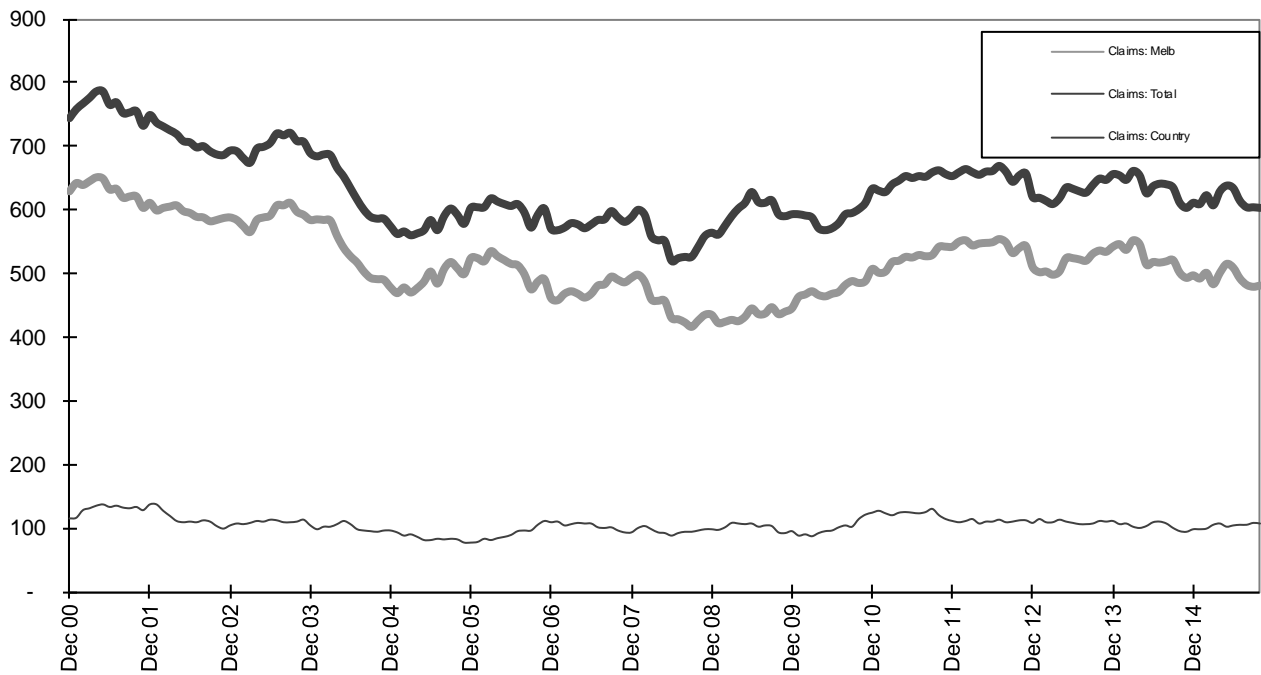
Graph 2b - Driver fatalities (Melbourne/country)



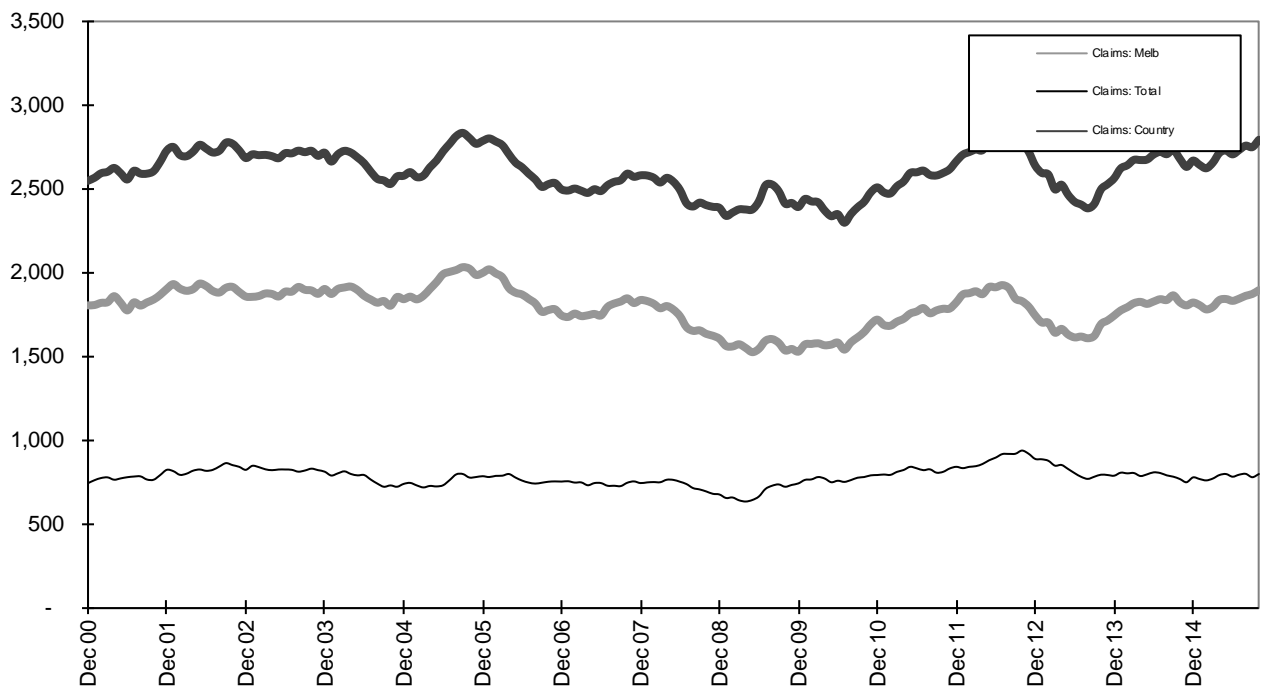
Graph 2c - Passenger fatalities (Melbourne/country)



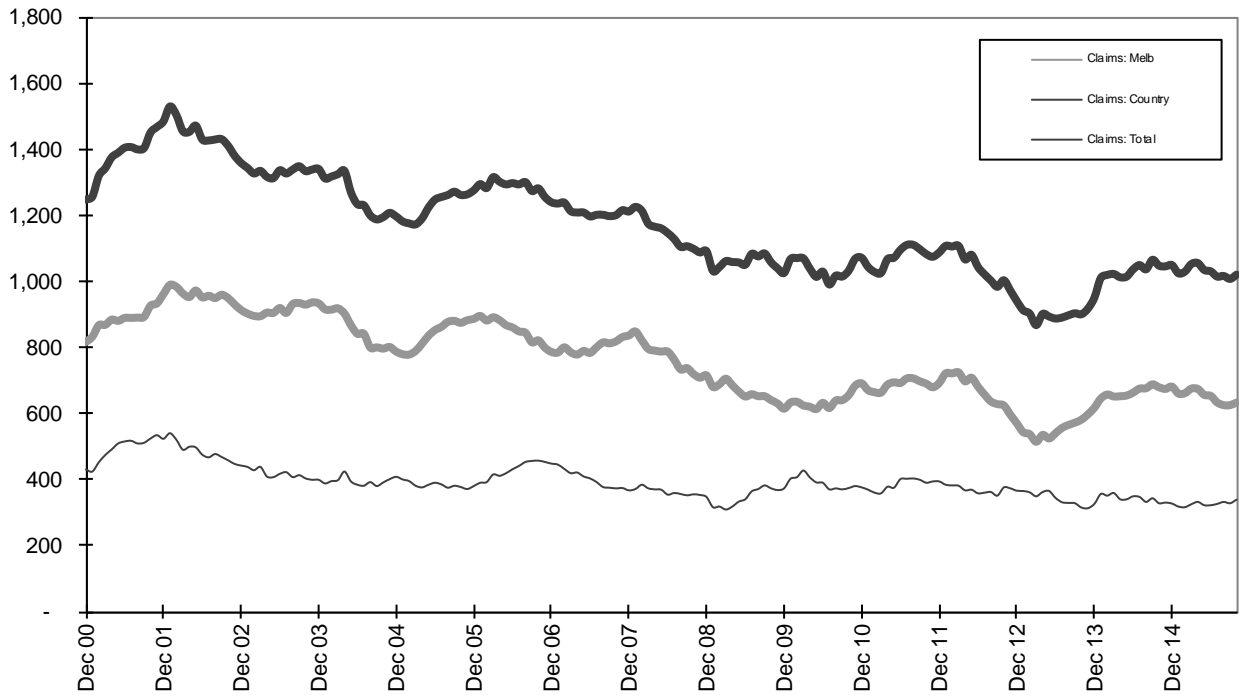
Graph 2d - Motorcyclist fatalities (Melbourne/country)



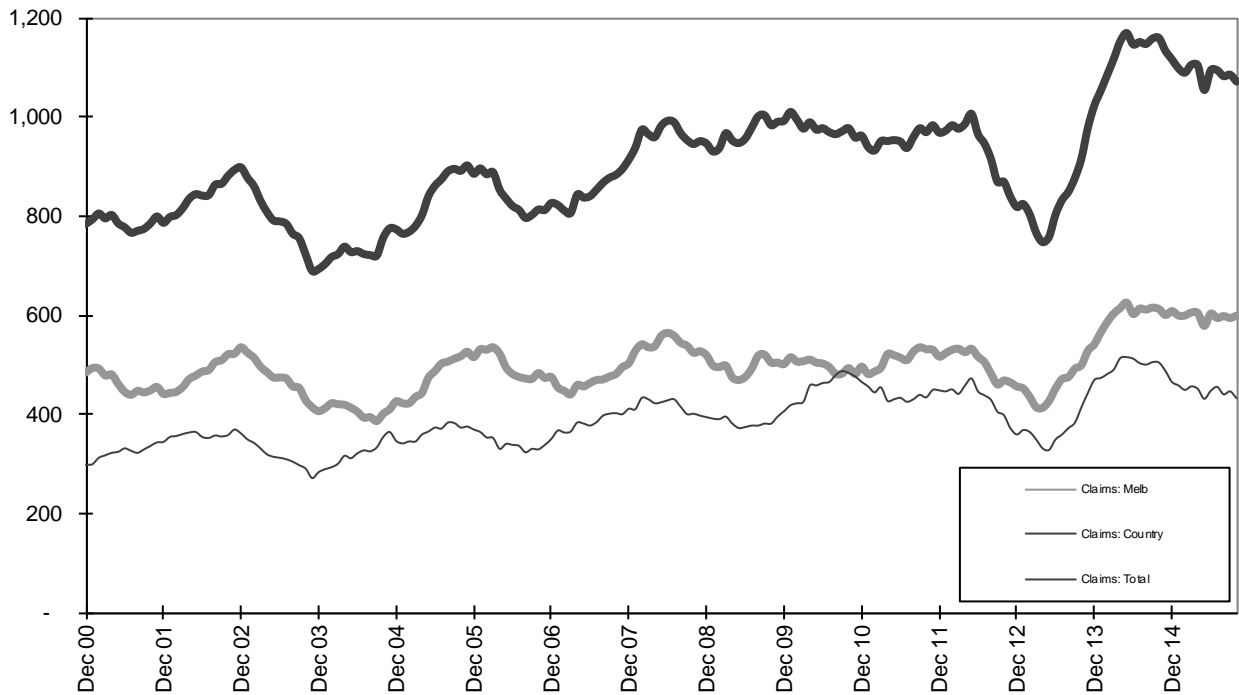
Graph 3a – Pedestrian Claims involving an acute hospital admission (Melbourne/country)



Graph 3b – Driver Claims involving an acute hospital admission (Melbourne/country)



Graph 3c - Passenger Claims involving an acute hospital admission (Melbourne/country)



Graph 3d - Motorcyclist Claims involving an acute hospital admission (Melbourne/country)