



# ROAD SAFETY STATISTICAL SUMMARY

## August 2012



**TRANSPORT  
ACCIDENT  
COMMISSION**

60 Brougham Street  
Geelong Vic 3220  
PO Box 742  
Geelong Vic 3220  
Ausdoc DX 216079 Geelong

Telephone 1300 654 329  
STD Toll Free 1800 332 556  
Fax: 03 9656 9300  
[www.tac.vic.gov.au](http://www.tac.vic.gov.au)  
ABN 22 033 947 623





## Contents

<b>Status Reports</b> _____	4-5
Fatalities (updated snapshot)	
Claims involving an acute hospital admission (updated snapshot)	
<b>Tables</b> _____	6-9
Fatalities (rolling 12 month)	
Claims involving an acute hospital admission (rolling 12 month)	
Overview	
Sex	
Road user	
Location	
Age Group	
Alctime	
Accident Type	
Police Service Area	
Fatalities – monthly totals since 1951 _____	10
Fatalities by Week (2007 to 2012) _____	11
Alcohol Related Fatalities _____	12
The National Picture _____	13
Police Enforcement _____	14
Explanations and References _____	15-16
Alcohol times (“Alctime”) explained	
Police Service Areas	
Useful internet sites	
<b>Graphs (12 month moving totals)</b> _____	17-24

### Note about the data in this report

- All data provided in this report is the data most recently available at time of production. Typically, fatalities data is updated to the end of report month. Similarly, breath test data and safety camera data is updated to the end of the report month. A 6-month lag applies to TAC claims data, and a 2-month lag applies to alcohol related fatalities data.
- Note that reported data inclusive of February 2008 or February 2012 will have one extra day of exposure compared to non-leap years.

## Status Report – Fatalities

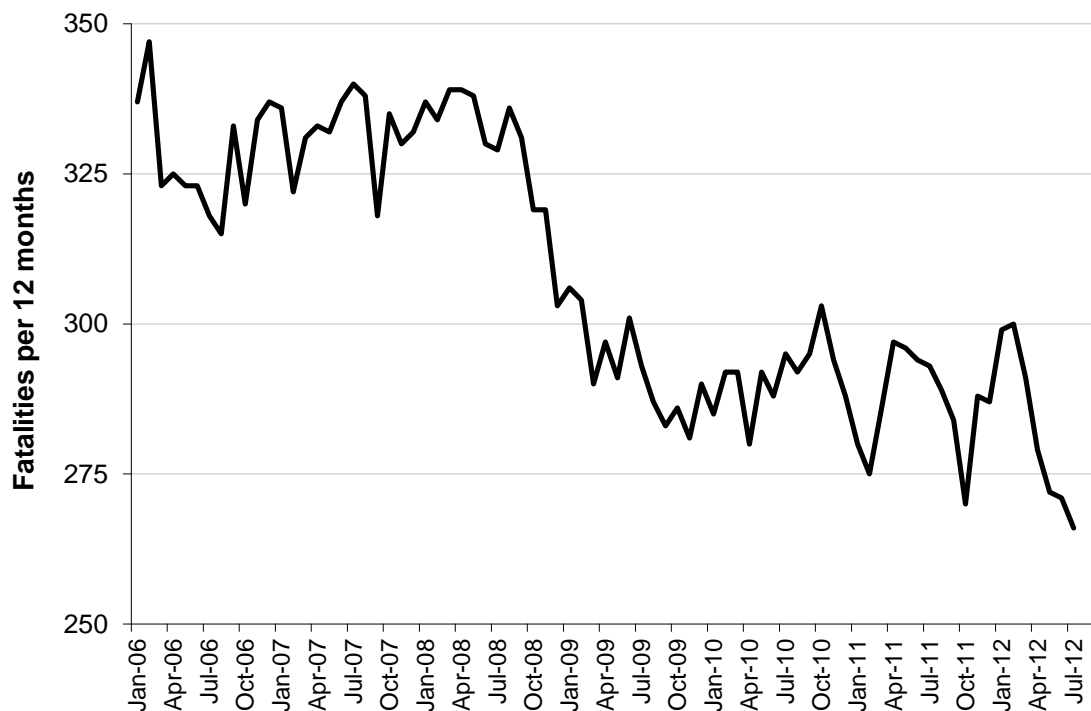
### Fatalities (year to date, to end August 2012)

- The number of road fatalities in 2012 stands at 181, 4.1% less than at the same stage in 2011 (196).
- 20 people were fatally injured in July 2012 and 27 in August 2012 on Victorian roads. This compares to 25 in July 2011 and 14 in August 2011.

Category	2012	2011	2010	2012 v 2011		2012 v 2010		5 Year Av
<b>Fatal Injuries (Rolling 12 Month Total)</b>								
Fatal (to August)	279	289	292	-10	(-3%)	-13	(-4%)	308
per 10,000 veh	0.65	0.69	0.71	-0.04	(-6%)	-0.06	(-8%)	0.61
per 100,000 pop	4.92	5.16	5.30	-0.24	(-5%)	-0.38	(-7%)	6.09

<b>Accidents (Rolling 12 Month Total)</b>								
Fatal (to August)	255	268	269	-13	(-5%)	-14	(-5%)	280
per 10,000 veh	0.59	0.64	0.66	-0.05	(-8%)	-0.07	(-11%)	0.71
per 100,000 pop	4.49	4.79	4.88	-0.3	(-6%)	-0.39	(-8%)	5.28

### Victoria – Fatalities, rolling 12 months total



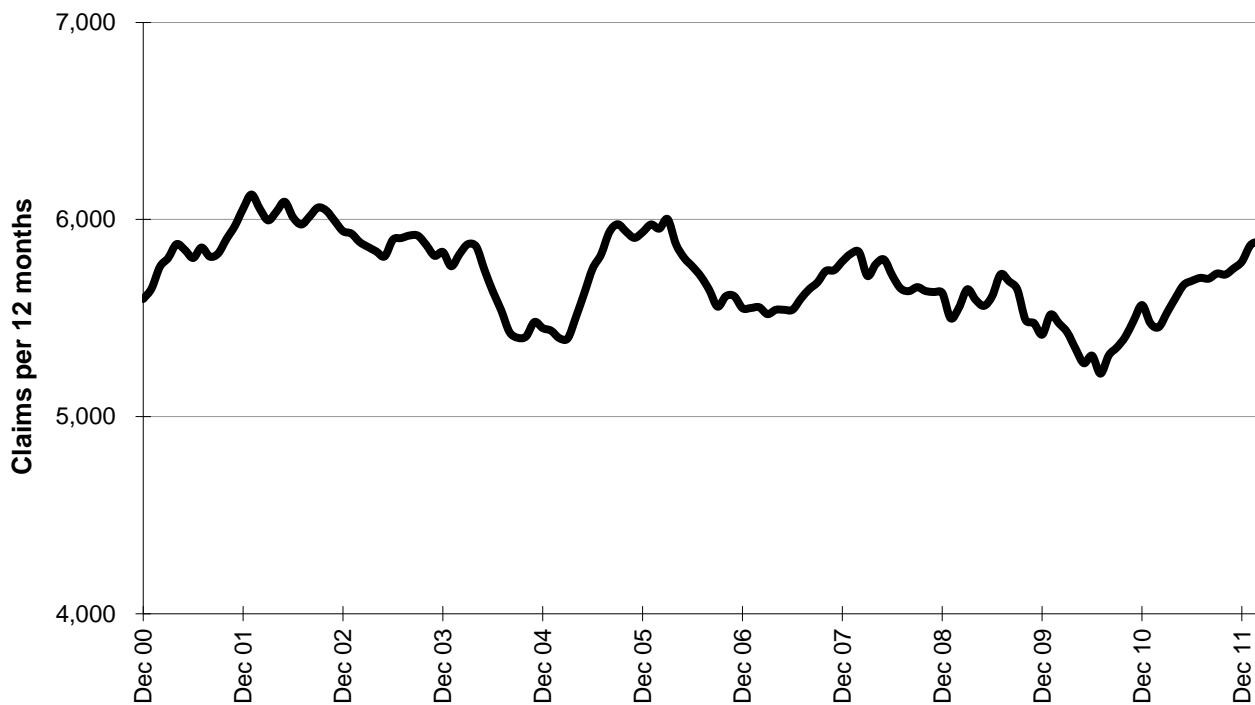
Note: Data is subject to revision as additional information about known accidents is received, and as new accident reports are received and processed.

## Status Report – Claims involving an acute hospital admission\* (by claim acceptance date)

Claims (year to date, to midnight 29 February 2012)

Category	2012	2011	2010	2012 v 2011		2012 v 2010		5 Year Av
<b>Claims involving an acute hospital admission (Rolling 12 Month Total)</b>								
Claims (to February)	5,890	5,454	5,474	436	(8%)	416	(8%)	5,574
per 10,000 veh	104.5	98.1	100.5	6.4	(7%)	4	(4%)	106.0
per 100,000 pop	13.9	13.1	13.5	0.8	(6%)	0.4	(3%)	14.3

### Victoria – Claims involving an acute hospital admission, rolling 12 months total



Note: Data is subject to revision as additional information about known claims is received, and as new claims are received and processed.

\*An acute hospital admission refers to a hospital admission that occurred within 7 days of accident.

## Fatalities: 12 months to August

Category	2012	2011	2010	2012 v 2011	2012 v 2010	5 Year Av
<b>Overview</b>						
Fatalities	279	289	292	-10 (-3%)	-13 (-4%)	308
Accidents	255	268	269	-13 (-5%)	-14 (-5%)	280
<b>Sex</b>						
Male	200	209	217	-9 (-4%)	-17 (-8%)	221
Female	78	80	75	-2 (-3%)	3 (4%)	87
<b>Roaduser</b>						
Bicyclist	8	7	9	1 (14%)	-1 (-11%)	8
Driver	141	123	139	18 (15%)	2 (1%)	147
Motorcyclist	42	48	49	-6 (-13%)	-7 (-14%)	46
Passenger	49	64	51	-15 (-23%)	-2 (-4%)	61
Pedestrian	39	47	44	-8 (-17%)	-5 (-11%)	48
<b>Location</b>						
Melbourne	129	127	134	2 (2%)	-5 (-4%)	147
Rural Victoria	150	162	158	-12 (-7%)	-8 (-5%)	161
<b>Agegroup</b>						
0-4	3	6	5	-3 (-50%)	-2 (-40%)	5
5-15	7	8	7	-1 (-13%)	0 (0%)	9
16-17	8	6	7	2 (33%)	1 (14%)	9
18-20	28	33	31	-5 (-15%)	-3 (-10%)	35
21-25	30	42	26	-12 (-29%)	4 (15%)	38
26-29	25	15	28	10 (67%)	-3 (-11%)	24
30-39	40	34	41	6 (18%)	-1 (-2%)	43
40-49	25	43	35	-18 (-42%)	-10 (-29%)	41
50-59	35	32	36	3 (9%)	-1 (-3%)	36
60-69	31	27	29	4 (15%)	2 (7%)	25
70+	46	43	47	3 (7%)	-1 (-2%)	46
<b>Alctime</b>						
High (Melb)	56	71	78	-15 (-21%)	-22 (-28%)	79
High (Rural)	71	87	74	-16 (-18%)	-3 (-4%)	77
High (Vic)	127	158	152	-31 (-20%)	-25 (-16%)	156
Low (Melb)	73	56	56	17 (30%)	17 (30%)	68
Low (Rural)	79	75	84	4 (5%)	-5 (-6%)	85
Low (Vic)	152	131	140	21 (16%)	12 (9%)	153
<b>Accident Type</b>						
<b>Intersection</b>						
Adjacent direction	26	30	25	-4 (-13%)	1 (4%)	27
Opposing direction	6	8	5	-2 (-25%)	1 (20%)	8
<b>Mid-block/other</b>						
Head on	43	33	39	10 (30%)	4 (10%)	39
Same direction	11	17	21	-6 (-35%)	-10 (-48%)	18
Manoeuvre/o'taking	21	16	14	5 (31%)	7 (50%)	16
On path	5	7	9	-2 (-29%)	-4 (-44%)	7
Single vehicle	117	125	128	-8 (-6%)	-11 (-9%)	133
Other (incl peds)	50	53	51	-3 (-6%)	-1 (-2%)	60

## Fatalities: 12 months to August

Category	2012	2011	2010	2012 v 2011	2012 v 2010	5 Year Av
<b>Police Service Area (based on Local Government Area (see p.13))</b>						
BALLARAT	3	13	6	-10 (-77%)	-3 (-50%)	7
BANYULE	3	3	1	0 (0%)	2 (200%)	2
BASS COAST	5	9	6	-4 (-44%)	-1 (-17%)	7
BAW BAW	1	15	4	-14 (-93%)	-3 (-75%)	9
BENALLA	7	9	12	-2 (-22%)	-5 (-42%)	8
BENDIGO	11	3	10	8 (267%)	1 (10%)	6
BOROONDARA	2	2	3	0 (0%)	-1 (-33%)	4
BRIMBANK	8	9	5	-1 (-11%)	3 (60%)	7
CAMPASPE	7	2	2	5 (250%)	5 (250%)	3
CARDINIA	10	6	7	4 (67%)	3 (43%)	6
CASEY	3	10	8	-7 (-70%)	-5 (-63%)	12
CENTRAL GOLDFIELDS	2	8	3	-6 (-75%)	-1 (-33%)	5
DAREBIN	6	3	1	3 (100%)	5 (500%)	4
EAST GIPPSLAND	8	7	10	1 (14%)	-2 (-20%)	10
FRANKSTON	3	6	3	-3 (-50%)	0 (0%)	6
GEELONG	12	10	13	2 (20%)	-1 (-8%)	8
GLEN EIRA	4	4	4	0 (0%)	0 (0%)	5
GREATER DANDENONG	5	3	5	2 (67%)	0 (0%)	6
HOBSONS BAY	1	0	2	1 (50%)	-1 (-50%)	3
HORSHAM	6	4	5	2 (50%)	1 (20%)	3
HUME	7	3	9	4 (133%)	-2 (-22%)	7
KINGSTON	9	1	4	8 (800%)	5 (125%)	5
KNOX	1	2	2	-1 (-50%)	-1 (-50%)	4
LA TROBE	8	2	9	6 (300%)	-1 (-11%)	6
MACEDON RANGES	4	3	9	1 (33%)	-5 (-56%)	7
MANNINGHAM	2	0	6	2 (200%)	-4 (-67%)	3
MARIBYRNONG	3	1	2	2 (200%)	1 (50%)	2
MAROONDAH	5	3	2	2 (67%)	3 (150%)	3
MELBOURNE	4	6	3	-2 (-33%)	1 (33%)	6
MELTON	7	6	5	1 (17%)	2 (40%)	5
MILDURA	0	4	5	-4 (-100%)	-5 (-100%)	5
MITCHELL	10	7	8	3 (43%)	2 (25%)	9
MONASH	4	6	6	-2 (-33%)	-2 (-33%)	6
MOONEE VALLEY	0	2	2	-2 (-100%)	-2 (-100%)	4
MOORABOOL	7	11	7	-4 (-36%)	0 (0%)	7
MORELAND	4	4	6	0 (0%)	-2 (-33%)	4
MORNINGTON PENINSULA	7	9	9	-2 (-22%)	-2 (-22%)	10
NILLUMBIK	3	2	1	1 (50%)	2 (200%)	2
NORTHERN GRAMPIANS	6	2	4	4 (200%)	2 (50%)	3
PORT PHILLIP	1	2	2	-1 (-50%)	-1 (-50%)	2
SHEPPARTON	9	4	4	5 (125%)	5 (125%)	6
SOUTHERN GRAMPIANS	8	1	5	7 (700%)	3 (60%)	5
STONNINGTON	1	2	0	-1 (-50%)	1 (100%)	2
SURF COAST	8	9	9	-1 (-11%)	-1 (-11%)	8
SWAN HILL	6	6	5	0 (0%)	1 (20%)	10
WANGARATTA	9	15	9	-6 (-40%)	0 (0%)	13
WARRNAMBOOL	5	7	6	-2 (-29%)	-1 (-17%)	6
WELLINGTON	2	9	2	-7 (-78%)	0 (0%)	6
WHITEHORSE	4	7	6	-3 (-43%)	-2 (-33%)	4
WHITTLESEA	6	7	13	-1 (-14%)	-7 (-54%)	7
WODONGA	5	2	5	3 (150%)	0 (0%)	4
WYNDHAM	4	9	6	-5 (-56%)	-2 (-33%)	6
YARRA	2	2	6	0 (0%)	-4 (-67%)	3
YARRA RANGES	11	7	5	4 (57%)	6 (120%)	10

## Claims involving an acute hospital admission: 12 months to February (claim acceptance date)

Category	2012	2011	2010	2012 v 2011	2012 v 2010	5 Year Av
<b>Overview</b>						
Claims	5,890	5,454	5,474	436 (8%)	416 (8%)	5,574
<b>Sex</b>						
Male	3,387	3,139	3,192	248 (8%)	195 (6%)	3,239
Female	2,502	2,314	2,279	188 (8%)	223 (10%)	2,334
<b>Roaduser</b>						
Bicyclist	353	335	313	18 (5%)	40 (13%)	304
Driver	2,702	2,469	2,420	233 (9%)	282 (12%)	2,461
Motorcyclist	976	932	994	44 (5%)	-18 (-2%)	930
Passenger	1,099	1,026	1,066	73 (7%)	33 (3%)	1,117
Pedestrian	661	630	589	31 (5%)	72 (12%)	591
Tram/train	20	29	15	-9 (-31%)	5 (33%)	15
<b>Location</b>						
Melbourne	4,006	3,674	3,463	332 (9%)	543 (16%)	3,678
Rural Victoria	1,813	1,757	1,758	56 (3%)	55 (3%)	1,719
<b>Agegroup</b>						
0-4	51	50	48	1 (2%)	3 (6%)	51
5-15	204	182	225	22 (12%)	-21 (-9%)	223
16-17	125	130	163	-5 (-4%)	-38 (-23%)	163
18-20	564	546	593	18 (3%)	-29 (-5%)	596
21-25	764	650	692	114 (18%)	72 (10%)	719
26-29	426	447	411	-21 (-5%)	15 (4%)	430
30-39	928	835	948	93 (11%)	-20 (-2%)	937
40-49	888	819	786	69 (8%)	102 (13%)	814
50-59	724	687	611	37 (5%)	113 (18%)	627
60-69	531	487	381	44 (9%)	150 (39%)	426
70+	685	621	616	64 (10%)	69 (11%)	586
<b>Alctime</b>						
High (Melb)	1,852	1,637	1,629	215 (13%)	223 (14%)	1,685
High (Rural)	778	792	812	-14 (-2%)	-34 (-4%)	749
High (Vic)	2,660	2,436	2,571	224 (9%)	89 (3%)	2,537
Low (Melb)	2,154	2,037	1,834	117 (6%)	320 (17%)	1,994
Low (Rural)	1,035	965	946	70 (7%)	89 (9%)	970
Low (Vic)	3,230	3,018	2,903	212 (7%)	327 (11%)	3,038
<b>Accident Type</b>						
<b>Intersection</b>						
Adjacent direction	937	809	850	128 (16%)	87 (10%)	847
Opposing direction	478	437	449	41 (9%)	29 (6%)	438
<b>Mid-block/other</b>						
Head on	351	318	295	33 (10%)	56 (19%)	319
Same direction	976	892	772	84 (9%)	204 (26%)	784
Manoeuvre/o'taking	302	342	309	-40 (-12%)	-7 (-2%)	311
On path	195	205	220	-10 (-5%)	-25 (-11%)	198
Single vehicle	1,644	1,551	1,686	93 (6%)	-42 (-2%)	1,656
Other (incl peds)	1,007	900	892	107 (12%)	115 (13%)	819

Note: excludes rejected claims and claims for interstate crashes



## Claims involving an acute hospital admission: 12 months to February (claim acceptance date)

Category	2012	2011	2010	2012 v 2011		2012 v 2010		5 Year Av
<b>Police Service Area (based on Local Government Area (see p.13))</b>								
BALLARAT	104	92	80	12	(13%)	24	(30%)	80
BANYULE	65	57	58	8	(14%)	7	(12%)	63
BASS COAST	93	71	71	22	(31%)	22	(31%)	82
BAW BAW	69	49	39	20	(41%)	30	(77%)	47
BENALLA	100	109	98	-9	(-8%)	2	(2%)	100
BENDIGO	106	89	70	17	(19%)	36	(51%)	77
BOROONDARA	134	152	128	-18	(-12%)	6	(5%)	138
BRIMBANK	175	104	117	71	(68%)	58	(50%)	137
CAMPASPE	37	38	45	-1	(-3%)	-8	(-18%)	39
CARDINIA	91	107	77	-16	(-15%)	14	(18%)	86
CASEY	250	223	236	27	(12%)	14	(6%)	227
CENTRAL GOLDFIELDS	7	8	10	-1	(-13%)	-3	(-30%)	13
DAREBIN	88	115	112	-27	(-23%)	-24	(-21%)	108
EAST GIPPSLAND	66	51	54	15	(29%)	12	(22%)	54
FRANKSTON	149	148	132	1	(1%)	17	(13%)	133
GEE LONG	239	230	230	9	(4%)	9	(4%)	234
GLEN EIRA	169	179	150	-10	(-6%)	19	(13%)	163
GREATER DANDENONG	211	194	153	17	(9%)	58	(38%)	175
HOBSONS BAY	63	70	54	-7	(-10%)	9	(17%)	67
HORSHAM	40	32	30	8	(25%)	10	(33%)	33
HUME	151	141	156	10	(7%)	-5	(-3%)	155
KINGSTON	133	127	138	6	(5%)	-5	(-4%)	133
KNOX	120	128	109	-8	(-6%)	11	(10%)	128
LA TROBE	78	67	48	11	(16%)	30	(63%)	57
MACEDON RANGES	73	87	90	-14	(-16%)	-17	(-19%)	78
MANNINGHAM	62	73	55	-11	(-15%)	7	(13%)	71
MARIBYRNONG	118	56	69	62	(111%)	49	(71%)	70
MAROONDAH	80	75	57	5	(7%)	23	(40%)	68
MELBOURNE	224	215	197	9	(4%)	27	(14%)	190
MELTON	81	65	62	16	(25%)	19	(31%)	64
MILDURA	30	36	25	-6	(-17%)	5	(20%)	34
MITCHELL	70	94	68	-24	(-26%)	2	(3%)	75
MONASH	170	145	166	25	(17%)	4	(2%)	166
MOONEE VALLEY	109	86	86	23	(27%)	23	(27%)	104
MOORABOOL	89	78	120	11	(14%)	-31	(-26%)	90
MORELAND	155	133	120	22	(17%)	35	(29%)	134
MORNINGTON PENINSULA	194	174	142	20	(11%)	52	(37%)	169
NILLUMBIK	44	34	25	10	(29%)	19	(76%)	33
NORTHERN GRAMPPIANS	38	29	28	9	(31%)	10	(36%)	36
PORT PHILLIP	128	93	109	35	(38%)	19	(17%)	120
SHEPPARTON	60	56	83	4	(7%)	-23	(-28%)	81
SOUTHERN GRAMPPIANS	45	43	41	2	(5%)	4	(10%)	38
STONNINGTON	131	124	103	7	(6%)	28	(27%)	112
SURF COAST	77	78	74	-1	(-1%)	3	(4%)	80
SWAN HILL	25	21	43	4	(19%)	-18	(-42%)	34
WANGARATTA	89	105	121	-16	(-15%)	-32	(-26%)	107
WARRNAMBOOL	95	109	88	-14	(-13%)	7	(8%)	80
WELLINGTON	87	65	83	22	(34%)	4	(5%)	63
WHITEHORSE	108	138	115	-30	(-22%)	-7	(-6%)	132
WHITTLESEA	118	118	123	0	(0%)	-5	(-4%)	116
WODONGA	52	63	59	-11	(-17%)	-7	(-12%)	60
WYNDHAM	164	105	112	59	(56%)	52	(46%)	116
YARRA	123	106	107	17	(16%)	16	(15%)	98
YARRA RANGES	198	189	195	9	(5%)	3	(2%)	200

**Fatalities: Victorian monthly totals since 1951**

<b>Year</b>	<b>Jan</b>	<b>Feb</b>	<b>Mar</b>	<b>Apr</b>	<b>May</b>	<b>Jun</b>	<b>Jul</b>	<b>Aug</b>	<b>Sep</b>	<b>Oct</b>	<b>Nov</b>	<b>Dec</b>	<b>Totals</b>
1951							61	59	52	38	29	41	
1952	45	40	54	61	54	69	67	55	44	44	31	20	584
1953	23	28	54	58	49	42	50	37	44	27	36	32	480
1954	44	42	28	60	55	36	63	33	25	52	30	41	509
1955	44	36	45	55	48	56	64	44	44	32	40	40	548
1956	34	48	51	67	53	65	71	47	39	39	44	48	606
1957	50	41	46	58	52	54	57	53	51	46	32	49	589
1958	50	38	42	58	54	41	54	53	57	40	57	52	596
1959	50	57	61	50	75	55	42	48	52	55	63	63	671
1960	49	53	57	76	70	70	67	62	61	77	52	66	760
1961	63	57	68	74	58	68	78	82	59	62	60	65	794
1962	65	41	76	78	72	80	70	77	62	53	64	70	808
1963	67	56	65	85	66	68	77	55	55	58	61	67	780
1964	73	71	78	71	83	89	80	89	67	66	62	75	904
1965	63	64	86	88	80	87	79	69	81	77	68	87	929
1966	75	59	75	103	74	86	87	80	75	66	90	85	955
1967	61	79	91	97	81	71	59	67	70	68	60	83	887
1968	70	78	86	78	73	76	73	77	72	80	81	105	949
1969	79	68	79	87	86	77	87	83	87	83	94	101	1,011
1970	85	84	106	80	87	88	110	106	78	95	68	74	1,061
1971	83	75	77	68	76	86	86	72	78	73	74	76	923
1972	61	62	75	82	75	71	98	85	83	62	80	81	915
1973	75	75	95	85	64	66	61	85	89	88	66	86	935
1974	56	62	81	60	70	73	67	62	53	70	80	72	806
1975	67	65	87	73	97	94	57	75	69	66	71	89	910
1976	79	78	88	78	69	79	60	70	82	78	77	100	938
1977	65	71	89	79	65	79	70	91	68	74	96	107	954
1978	75	54	95	63	64	69	68	77	65	84	83	72	869
1979	63	60	86	75	45	64	66	75	69	79	72	93	847
1980	48	55	66	59	47	56	60	53	45	58	61	49	657
1981	69	60	58	61	74	65	61	63	68	71	59	57	766
1982	55	53	59	59	67	45	47	71	53	69	65	66	709
1983	42	59	53	63	62	61	65	51	59	43	54	52	664
1984	65	48	58	50	56	48	46	50	71	53	55	58	658
1985	56	47	50	65	75	50	51	50	58	61	56	64	683
1986	56	50	70	69	59	53	42	54	54	52	59	51	669
1987	62	43	57	52	63	59	62	49	62	61	55	80	705
1988	49	58	69	54	79	50	54	52	64	59	43	70	701
1989	76	65	80	59	67	73	52	65	82	50	41	66	776
1990	48	44	55	39	56	64	41	34	48	35	40	44	548
1991	45	39	70	30	34	29	44	47	41	36	35	53	503
1992	34	33	34	47	33	29	23	27	28	38	30	40	396
1993	27	40	37	39	44	33	33	27	34	39	43	40	436
1994	36	31	44	35	27	33	29	37	17	27	32	30	378
1995	38	35	26	33	34	41	27	34	34	32	38	46	418
1996	40	47	35	38	28	29	30	35	49	24	33	30	418
1997	36	25	30	30	40	22	39	26	26	29	39	35	377
1998	29	29	32	36	31	22	40	19	37	36	49	30	390
1999	32	31	35	35	34	24	35	26	28	38	29	37	384
2000	32	26	46	32	39	32	33	29	36	29	44	29	407
2001	44	30	31	32	31	41	34	37	35	51	41	37	444
2002	32	31	45	31	45	32	27	25	31	30	31	37	397
2003	21	41	36	28	31	28	20	23	23	24	24	31	330
2004	32	22	30	30	46	28	27	26	22	28	25	27	343
2005	33	27	47	21	29	23	30	25	25	33	17	36	346
2006	24	37	23	23	27	23	25	22	43	20	31	39	337
2007	23	23	32	25	26	28	28	20	23	37	26	41	332
2008	28	20	37	25	25	20	27	27	18	25	26	25	303
2009	31	18	23	32	19	30	19	21	14	28	21	34	290
2010	26	25	23	20	31	26	26	18	17	36	12	28	288
2011	18	20	34	31	30	24	25	14	12	22	30	27	287
2012	30	21	25	19	23	23	20	27					141
<b>Ave</b>	<b>50</b>	<b>47</b>	<b>57</b>	<b>55</b>	<b>54</b>	<b>53</b>	<b>52</b>	<b>51</b>	<b>51</b>	<b>51</b>	<b>50</b>	<b>56</b>	<b>631</b>
<b>Max</b>	<b>85</b>	<b>84</b>	<b>106</b>	<b>103</b>	<b>97</b>	<b>94</b>	<b>110</b>	<b>106</b>	<b>89</b>	<b>95</b>	<b>96</b>	<b>107</b>	<b>1,061</b>
<b>Min</b>	<b>18</b>	<b>18</b>	<b>23</b>	<b>19</b>	<b>19</b>	<b>20</b>	<b>19</b>	<b>14</b>	<b>12</b>	<b>20</b>	<b>12</b>	<b>20</b>	<b>287</b>

## Fatalities by Week (2007 to 2012)

Week Ending	2007	2008	2009	2010	2011	2012	Cumulative 2012	% Change 2012-2011	12 Month Moving Total
1-Jan	3	1	3	1	2	1	1	-50%	286
8-Jan	2	8	11	6	1	3	4	33%	288
15-Jan	7	5	6	1	6	9	13	44%	291
22-Jan	5	4	2	9	4	7	20	54%	294
29-Jan	5	8	8	6	4	9	29	71%	299
5-Feb	7	5	1	9	8	4	33	32%	295
12-Feb	4	4	10	5	3	2	35	25%	294
19-Feb	10	4	3	8	5	11	46	39%	300
26-Feb	3	8	5	4	4	4	50	35%	300
4-Mar	9	8	2	6	8	1	51	13%	293
11-Mar	9	5	6	5	6	4	55	8%	291
18-Mar	3	13	3	4	9	12	67	12%	294
25-Mar	8	7	7	8	8	4	71	4%	290
1-Apr	4	10	8	5	5	7	78	7%	292
8-Apr	11	3	5	4	12	6	84	-1%	286
15-Apr	4	6	8	6	5	2	86	-4%	283
22-Apr	3	6	10	4	6	6	92	-4%	283
29-Apr	7	5	6	4	7	2	94	-9%	278
6-May	3	7	7	3	4	10	104	-3%	284
13-May	6	4	4	9	7	2	106	-7%	279
20-May	8	8	1	6	11	5	111	-11%	273
27-May	6	6	3	12	4	5	116	-10%	274
3-Jun	15	2	7	2	5	4	120	-10%	273
10-Jun	3	6	6	7	9	6	126	-12%	270
17-Jun	4	4	8	8	3	4	130	-11%	271
24-Jun	7	7	6	5	6	7	137	-10%	272
1-Jul	2	5	7	8	5	5	142	-10%	272
8-Jul	9	10	9	4	10	4	146	-13%	266
15-Jul	7	2	2	3	5	4	150	-13%	265
22-Jul	6	3	5	5	8	5	155	-14%	262
29-Jul	5	8	3	10	2	5	160	-12%	265
5-Aug	2	8	3	7	4	3	163	-12%	264
12-Aug	2	6	11	3	6	4	167	-13%	262
19-Aug	4	3	4	5	1				
26-Aug	11	7	1	2	1				
2-Sep	3	5	4	3	3				
9-Sep	7	3	1	4	3				
16-Sep	4	6	7	1	3				
23-Sep	8	6	2	6	1				
30-Sep	5	6	2	4	5				
7-Oct	12	8	2	12	7				
14-Oct	6	4	8	7	2				
21-Oct	8	4	9	8	3				
28-Oct	6	4	8	6	7				
4-Nov	6	4	4	5	5				
11-Nov	7	7	6	0	12				
18-Nov	4	10	6	3	8				
25-Nov	7	3	4	3	5				
2-Dec	8	4	5	7	7				
9-Dec	16	9	5	6	6				
16-Dec	5	3	11	6	7				
23-Dec	8	9	10	9	6				
31-Dec	8	2	5	4	3				
<b>Total</b>	<b>332</b>	<b>303</b>	<b>290</b>	<b>288</b>	<b>287</b>				

## Alcohol Related Fatalities

**NOTE: UPDATES TO THIS DATA WERE NOT AVAILABLE AT TIME OF REPORT**

### BAC Fatalities (12 months to April 2010)

- 24% of fatally injured and tested drivers and riders had a BAC at 0.05 g/100ml or over (41 of 172) compared to 25% over the previous 12 month period (43 of 169).
- In Melbourne, 21 drivers/riders fatally injured and tested were at or over 0.05, with 38% of these having a BAC in excess of 0.15 g/100ml. Across rural Victoria, 20 drivers/riders fatally injured and tested were at or over 0.05, with 65% of these having a BAC over 0.15.
- Of the 41 drivers and riders fatally injured and tested at or over 0.05, 15% (6) were aged under 21, 39% (16) were aged 21-29, 27% (11) were aged 30-39 and 20% (8) were aged 40 years and over. In the previous year (43 fatally injured) the corresponding figures were 19% (8), 28% (12), 19% (8) and 35% (15), respectively.

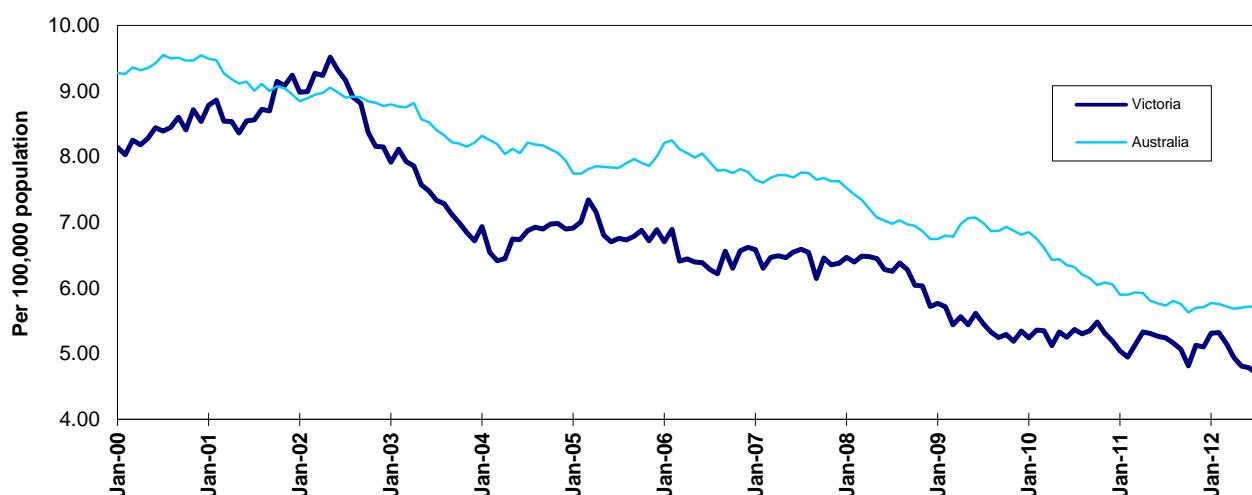
Category	2010	2009	2008	2010 v 2009	2010 v 2008	5 Year Av
<b>Melbourne Drivers and Riders</b>						
<0.05	55	63	63	-8	(-13%)	62
[a] at 0.05 & above	21	17	25	4	(24%)	21
% at 0.05 & above	(28%)	(21%)	(28%)			(25%)
[b] >0.15	8	10	12	-2	(-20%)	9
%>0.15	(11%)	(13%)	(14%)			(11%)
[b] as a % of [a]	(38%)	(59%)	(48%)			(43%)
BAC Unknown	5	3	1	2	(67%)	3
<b>Country Drivers and Riders</b>						
<0.05	76	63	90	13	(21%)	78
[a] at 0.05 & above	20	26	32	-6	(-23%)	26
% at 0.05 & above	(21%)	(29%)	(26%)			(25%)
[b] >0.15	13	17	20	-4	(-24%)	17
%>0.15	(14%)	(19%)	(16%)			(16%)
[b] as a % of [a]	(65%)	(65%)	(63%)			(64%)
BAC Unknown	7	2	1	5	(250%)	5
<b>Victorian Total Drivers and Riders</b>						
<0.05	131	126	153	5	(4%)	140
[a] at 0.05 & above	41	43	57	-2	(-5%)	47
% at 0.05 & above	(24%)	(25%)	(27%)			(25%)
[b] >0.15	21	27	32	-6	(-22%)	26
%>0.15	(12%)	(16%)	(15%)			(14%)
[b] as a % of [a]	(51%)	(63%)	(56%)			(54%)
BAC Unknown	12	5	2	7	(140%)	7
<b>Victorian Total Pedestrians</b>						
<0.05	32	35	38	-3	(-9%)	33
[a] at 0.05 & above	8	21	9	-13	(-62%)	14
% at 0.05 & above	(20%)	(38%)	(19%)			(30%)
[b] >0.15	3	10	8	-7	(-70%)	9
%>0.15	(8%)	(18%)	(17%)			(19%)
[b] as a % of [a]	(38%)	(48%)	(89%)			(62%)
BAC Unknown	6	4	2	2	(50%)	4

## The National Picture

State	Fatalities (12 months to August)					2012 v 2011
	2012	2011	2010	2009		
NSW	403	376	419	439	27	(7%)
VIC	279	289	292	287	-10	(-3%)
QLD	274	267	252	340	7	(3%)
SA	90	112	118	123	-22	(-20%)
WA	187	188	195	185	-1	(-1%)
TAS	23	28	33	63	-5	(-18%)
NT	56	39	47	44	17	(44%)
ACT	6	8	21	10	-2	(-25%)
AUST TOTAL	1,318	1,307	1,377	1,491	11	(1%)
AUST minus VIC	1,039	1,018	1,085	1,204	21	(2%)

State	Fatalities per 10,000 registered vehicles (12 months to August)			Fatalities per 100,000 population (12 months to August)		
	2012	2011	2010	2012	2011	2010
NSW	0.83	0.79	0.90	5.49	5.16	5.83
VIC	0.65	0.69	0.71	4.92	5.16	5.30
QLD	0.78	0.78	0.75	5.93	5.86	5.63
SA	0.71	0.89	0.95	5.40	6.78	7.21
WA	0.94	0.98	1.04	7.86	8.07	8.57
TAS	0.53	0.67	0.81	4.49	5.49	6.52
NT	3.96	2.84	3.50	24.29	16.96	20.61
ACT	0.22	0.31	0.83	1.71	2.25	5.89
AUST TOTAL	0.79	0.80	0.86	5.78	5.80	6.21
AUST minus VIC	0.83	0.83	0.91	6.03	5.98	6.51

### Victoria v Australia – 12 Month Moving Fatality Rate



## Booze-Bus Random Breath Testing\*

12 months to August 2012 (monthly totals)

	2011				2012							
	Sep	Oct	Nov	Dec	Jan	Feb	Mar	Apr	May	Jun	Jul	Aug
Melbourne					86,442	83,625	87,082	89,651	91,052	79,523	77,942	80,396
Country					9,042	10,529	12,033	7,426	7,767	7,285	4,486	7,077
Vic Total					95,484	94,154	99,115	97,077	98,819	86,808	82,428	87,473

12 months to June 2012 vs previous 12 months

	2012	2011	2010	2012 v 2011		2011 v 2009	
Melbourne	1,039,668	1,001,833	1,102,307	37,835	(4%)	-62,639	(-6%)
Country	153,033	181,748	227,182	-28,715	(-16%)	-74,149	(-33%)
Vic Total	1,192,701	1,183,581	1,329,489	9,120	(1%)	-136,788	(-10%)

\*Due to police industrial action, reliable random breath testing data is not available from May to October 2011. For the rolling 12 month totals, 2010 data has been used as a substitute in the relevant months.

## Mobile Safety Camera Data

Speed Infringements Issued from Mobile Cameras (monthly totals)

Monthly Average = 47,989

2011	2012										
	Jul	Aug	Sep	Oct	Nov	Dec	Jan	Feb	Mar	Apr	May
48,508	47,459	45,614	13,049	88,160	44,408	54,857	43,904	50,948	42,935	50,292	45,729

Excessive Speed Infringements Issued from Mobile Cameras (monthly totals)

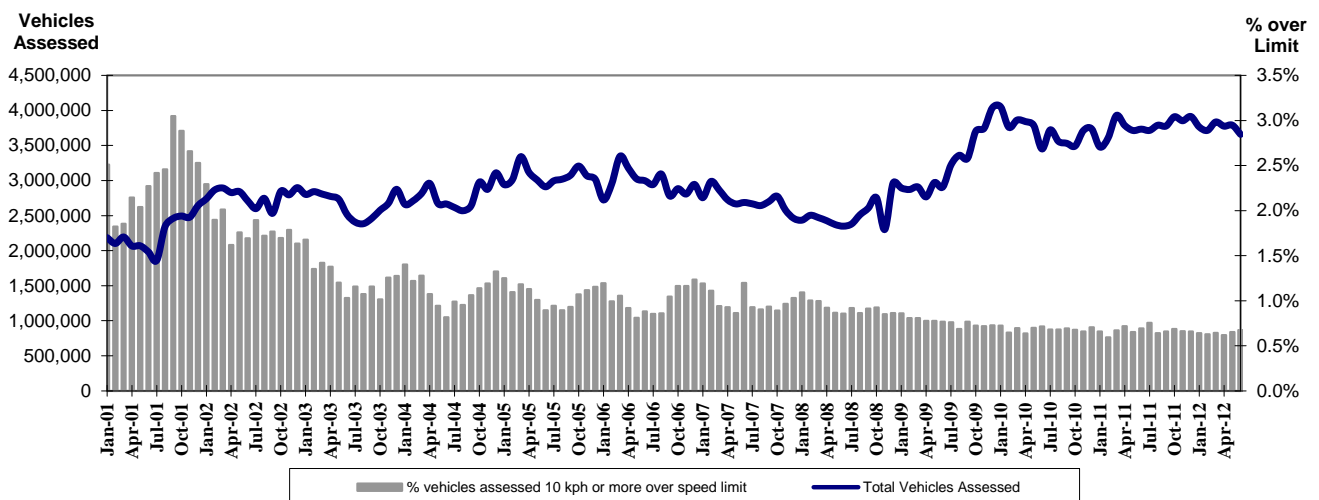
Monthly Average = 414

2011	2012										
	Jul	Aug	Sep	Oct	Nov	Dec	Jan	Feb	Mar	Apr	May
460	467	421	176	658	450	487	340	435	374	360	341

Notes: An ESI is defined as 25km/h over the speed limit except in a 110km/h zone where it is 20km/h over the limit.

Note that the Victoria Police Traffic Camera Office was not approving infringements during police industrial action between 30th September and 24th of October. This resulted in a backlog of infringements which were subsequently processed in November. The issuing of "on-the-spot" fine numbers also dropped during the industrial action.

Mobile Safety Cameras – Vehicles assessed and percentage of vehicles assessed 10km/h or more over speed limit per month



### Explanations and References

Hi-AlcTime is those times of the day and week (*shaded* in the table below) when casualty crashes are ten times more likely to involve alcohol than casualty crashes at other (Lo-AlcTime) times.

	12am - 6am	6am - 8am	8am - 10am	10am - 2pm	2pm - 4pm	4pm - 6pm	6pm - 12pm
Monday							
Tuesday							
Wednesday							
Thursday							
Friday							
Saturday							
Sunday							

Police Service Areas align with Local Government Areas. Most Police Service Areas are equivalent to a single Local Government Area, while the remainder comprise two or three Local Government Areas.

Police Service Area	Local Government Area(s)	Police Service Area	Local Government Area(s)
BALLARAT	BALLARAT, PYRENEES	MAROONDAH	MAROONDAH
BANYULE	BANYULE	MELBOURNE	MELBOURNE
BASS COAST	BASS COAST, SOUTH GIPPSLAND	MELTON	MELTON
BAW BAW	BAWBAW	MILDURA	MILDURA
BENALLA	BENALLA, MANSFIELD, MURRINDINDI	MITCHELL	MITCHELL, STRATHBOGIE
BENDIGO	GREATER BENDIGO	MONASH	MONASH
BOROONDARA	BOROONDARA	MOONEE VALLEY	MOONEE VALLEY
BRIMBANK	BRIMBANK	MOORABOOL	GOLDEN PLAINS, HEPBURN, MOORABOOL
CAMPASPE	CAMPASPE	MORELAND	MORELAND
CARDINIA	CARDINIA	MORNINGTON PENINSULA	MORNINGTON PENINSULA
CASEY	CASEY	NILLUMBIK	NILLUMBIK
CENTRAL GOLDFIELDS	CENTRAL GOLDFIELDS, LODDON	NORTHERN GRAMPIANS	ARARAT, NORTHERN GRAMPIANS, YARRIAMIACK
GREATER DANDENONG	GREATER DANDENONG	PORT PHILLIP	PORT PHILLIP
DAREBIN	DAREBIN	SHEPPARTON	GREATER SHEPPARTON
EAST GIPPSLAND	EAST GIPPSLAND	SOUTHERN GRAMPIANS	GLENELG, SOUTHERN GRAMPIANS
FRANKSTON	FRANKSTON	STONNINGTON	STONNINGTON
GEELONG	GREATER GEELONG, QUEENSCLIFF	SURFCOAST	SURFCOAST, COLAC OTWAY
GLENEIRA	GLENEIRA, BAYSIDE	SWANHILL	BULOKE, GANNAWARRA, SWAN HILL
HOBSONS BAY	HOBSONSBAY	WANGARATTA	ALPINE, MOIRA, WANGARATTA
HORSHAM	HINDMARSH, HORSHAM, WESTWIMMERA	WARRNAMBOOL	CORANGAMITE, MOYNE, WARRNAMBOOL
HUME	HUME	WELLINGTON	WELLINGTON
KINGSTON	KINGSTON	WHITEHORSE	WHITEHORSE
KNOX	KNOX	WHITTLESEA	WHITTLESEA
LATROBE	LATROBE	WODONGA	INDIGO, TOWONG, WODONGA
MACEDON RANGES	MOUNT ALEXANDER, MACEDON RANGES	WYNDHAM	WYNDHAM
MANNINGHAM	MANNINGHAM	YARRA	YARRA
MARIBYRNONG	MARIBYRNONG	YARRA RANGES	YARRA RANGES

## Useful Internet Sites

### TAC Sites

- TAC Safety (Road Safety) [www.tacsafety.com.au](http://www.tacsafety.com.au)
- TAC How safe is your car [www.howsafeisyourcar.com.au](http://www.howsafeisyourcar.com.au)
- TAC Learners Log [www.learnerslog.com.au](http://www.learnerslog.com.au)
- TAC Motorcycle Safety Website [www.spokes.com.au](http://www.spokes.com.au)
- TAC Corporate site [www.tac.vic.gov.au](http://www.tac.vic.gov.au)

### Victorian Sites:

- VicRoads [www.vicroads.vic.gov.au](http://www.vicroads.vic.gov.au)
- Victoria Police [www.police.vic.gov.au](http://www.police.vic.gov.au)
- Parliamentary Road Safety Committee [www.parliament.vic.gov.au/rsc/](http://www.parliament.vic.gov.au/rsc/)
- ARRB Transport Research [www.arrb.com.au](http://www.arrb.com.au)
- RACV [www.racv.com.au](http://www.racv.com.au)
- Monash University Accident Research Centre [www.monash.edu.au/muarc](http://www.monash.edu.au/muarc)
- Roadsafe [www.roadsafe.org.au](http://www.roadsafe.org.au)
- Cameras Save Lives [www.camerassavelives.vic.gov.au](http://www.camerassavelives.vic.gov.au)

### National and Interstate Sites:

- Australian Transport Safety Bureau [www.atsb.gov.au](http://www.atsb.gov.au)
- Roads and Traffic Authority (NSW) [www.rta.nsw.gov.au](http://www.rta.nsw.gov.au)
- Queensland Transport - Road Safety [transport.qld.gov.au/Home/Safety/Road](http://transport.qld.gov.au/Home/Safety/Road)
- Department of Transport (SA) [www.transport.sa.gov.au/index.htm](http://www.transport.sa.gov.au/index.htm)
- Main Roads Western Australia - Road Safety [www.mrwa.wa.gov.au](http://www.mrwa.wa.gov.au)

### International Sites:

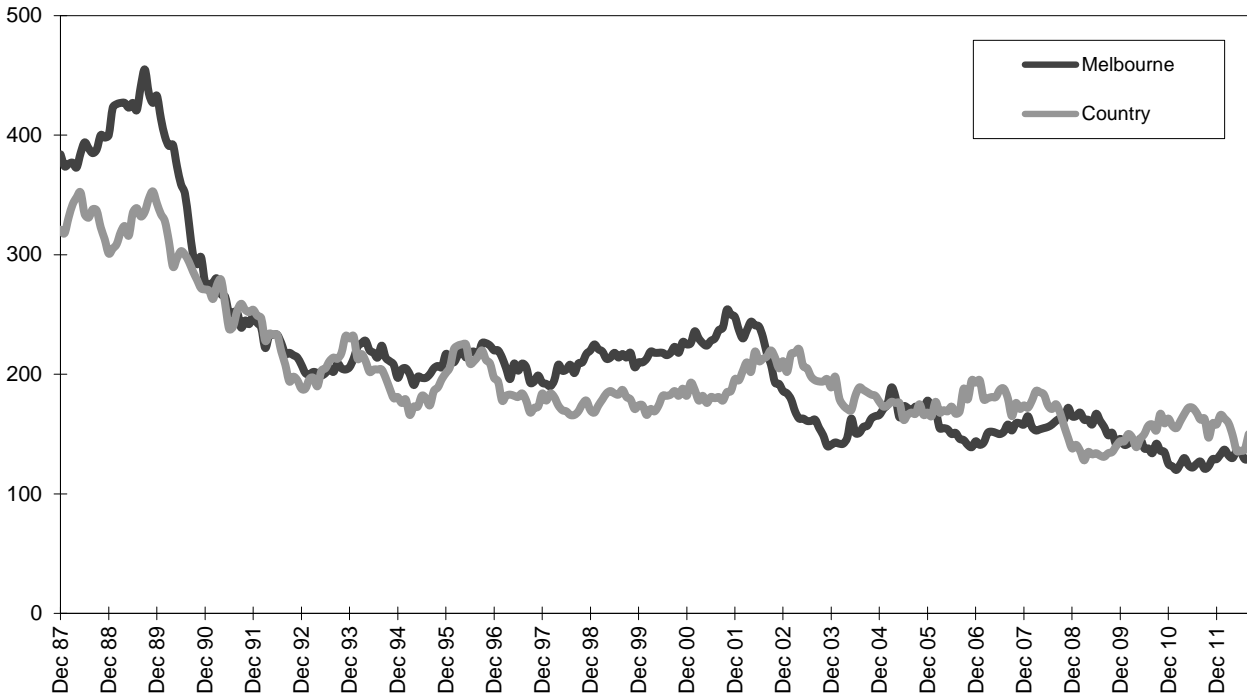
- National Highway Traffic Safety Admin (USA) [www.nhtsa.dot.gov](http://www.nhtsa.dot.gov)
- Swedish Road and Transport Institute (VTI) [www.vti.se](http://www.vti.se)
- SWOV Institute for Road Safety Research [www.swov.nl](http://www.swov.nl)

### Related Sites:

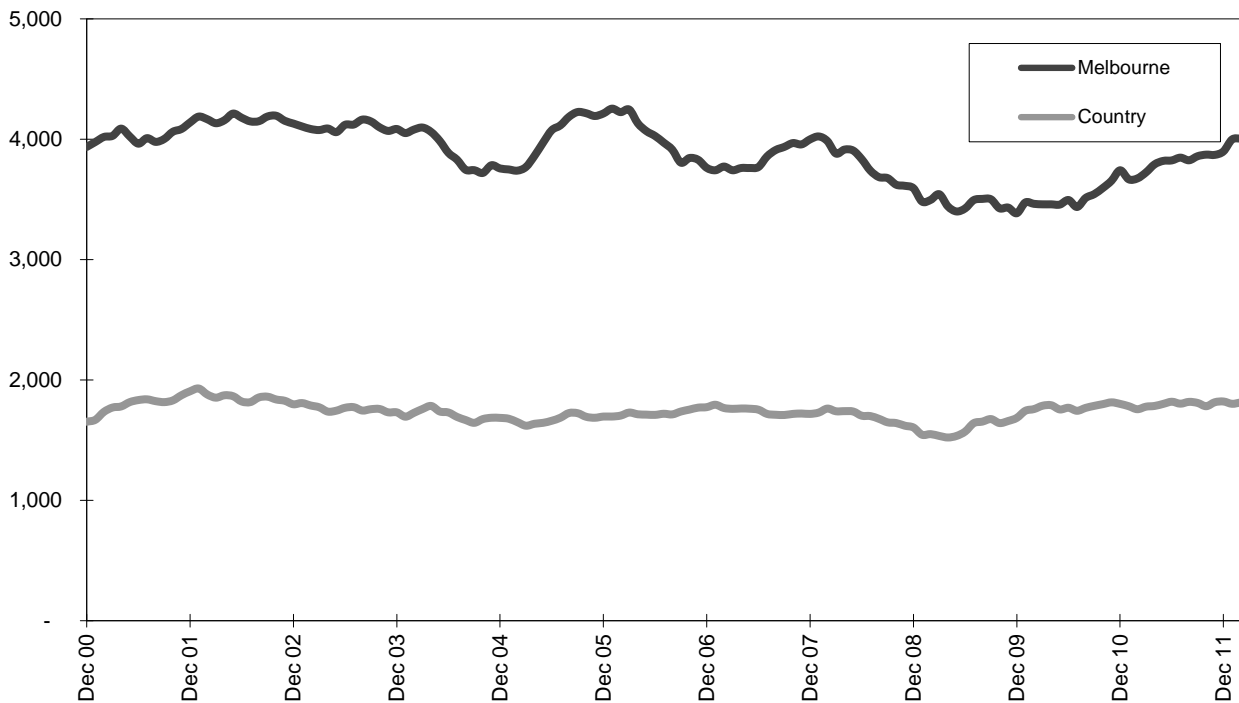
- Australian Drug Foundation [www.adf.org.au](http://www.adf.org.au)
- Amy Gillett Foundation [www.amygillett.org.au](http://www.amygillett.org.au)



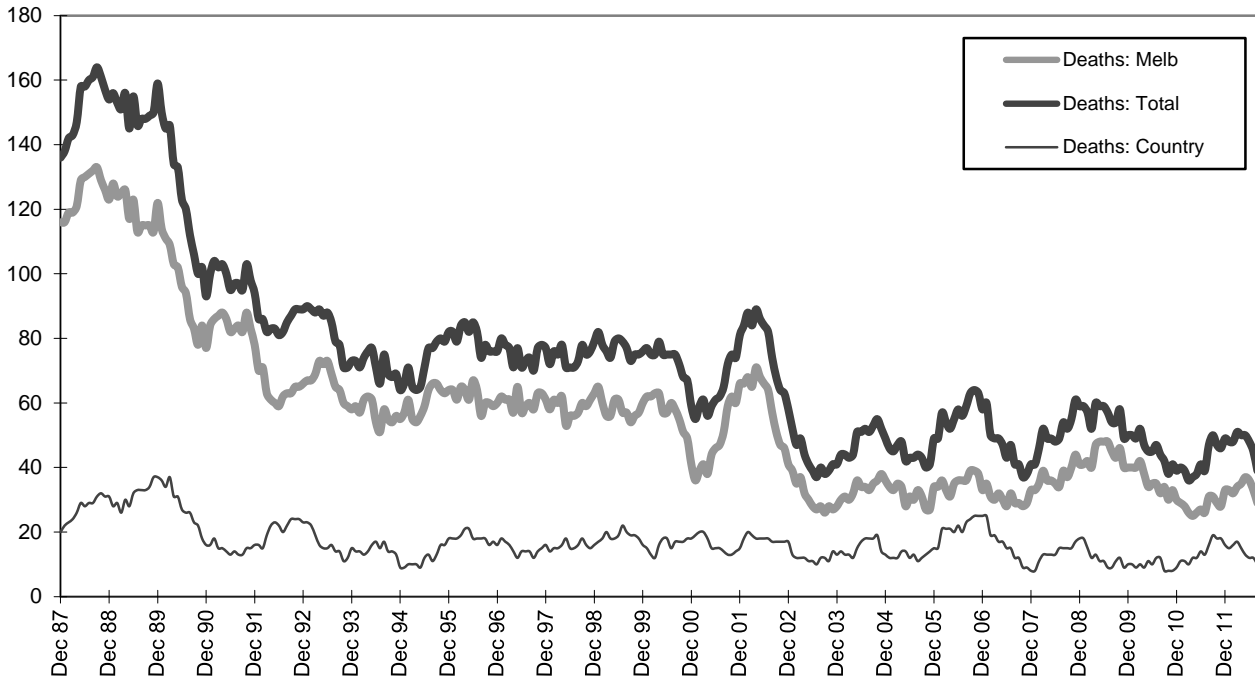
**Graph 1a – Melbourne/country fatalities**



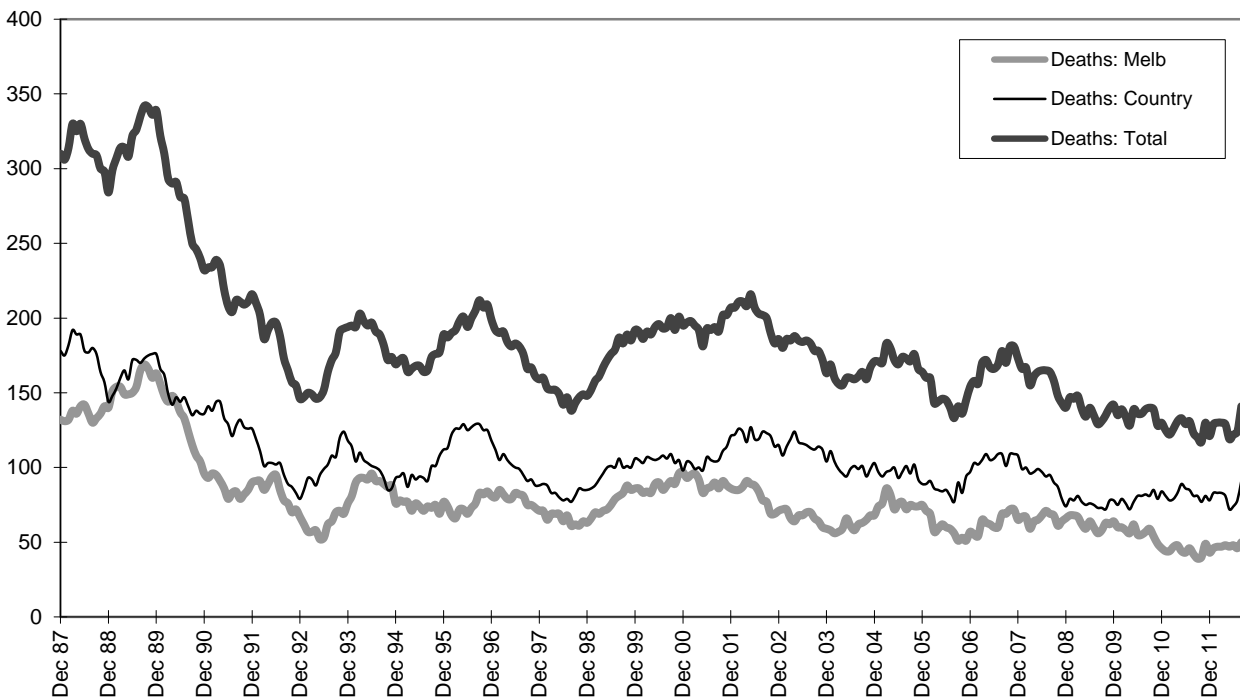
**Graph 1b – Melbourne/country Claims involving an acute hospital admission**



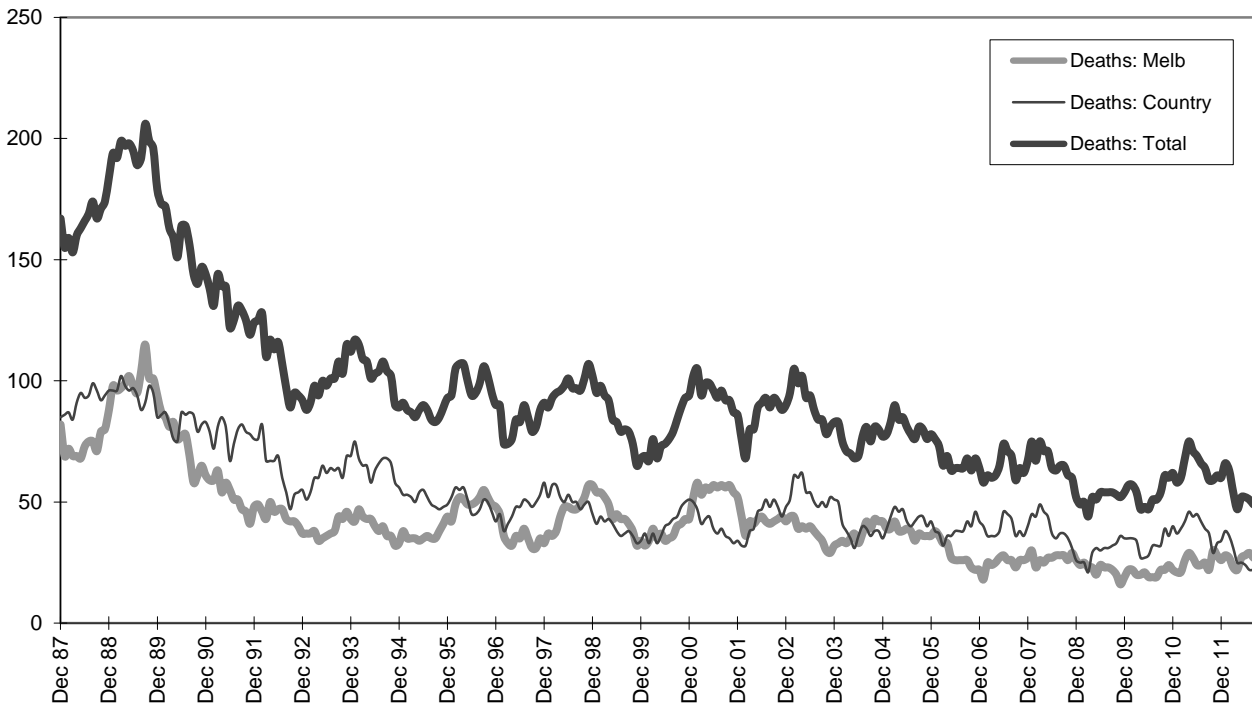
**Graph 2a – Pedestrian fatalities (Melbourne/country)**



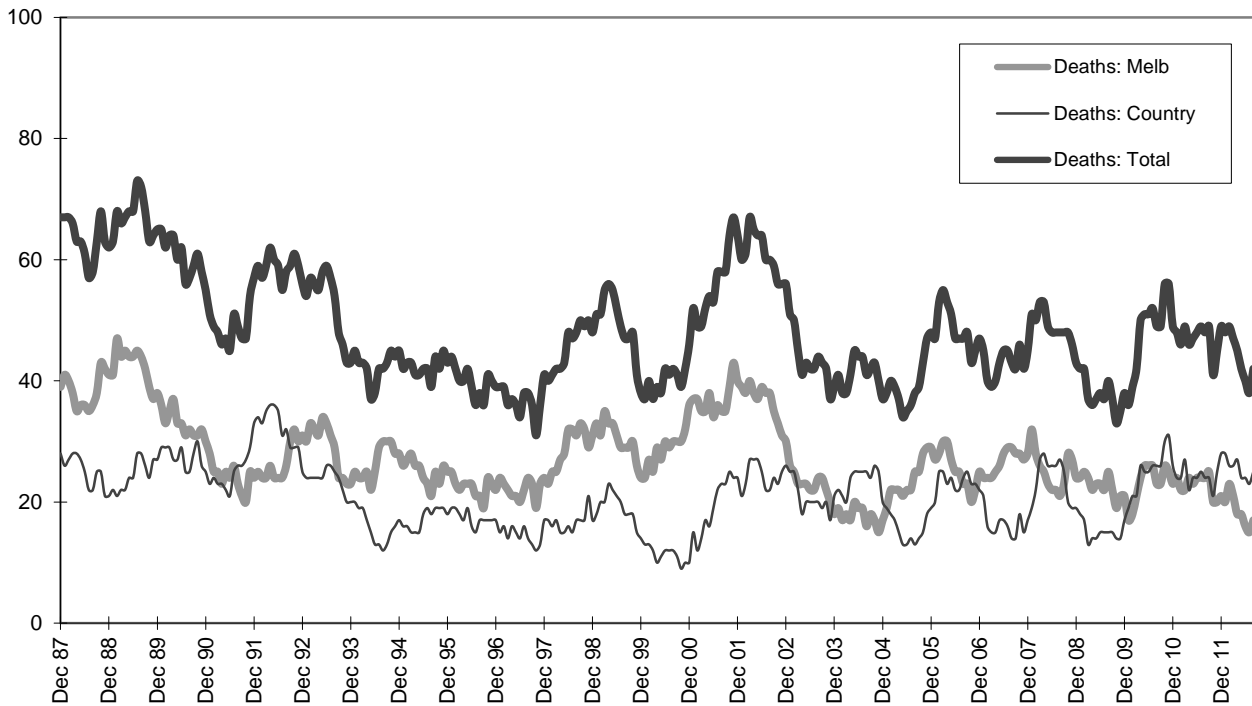
**Graph 2b – Driver fatalities (Melbourne/country)**



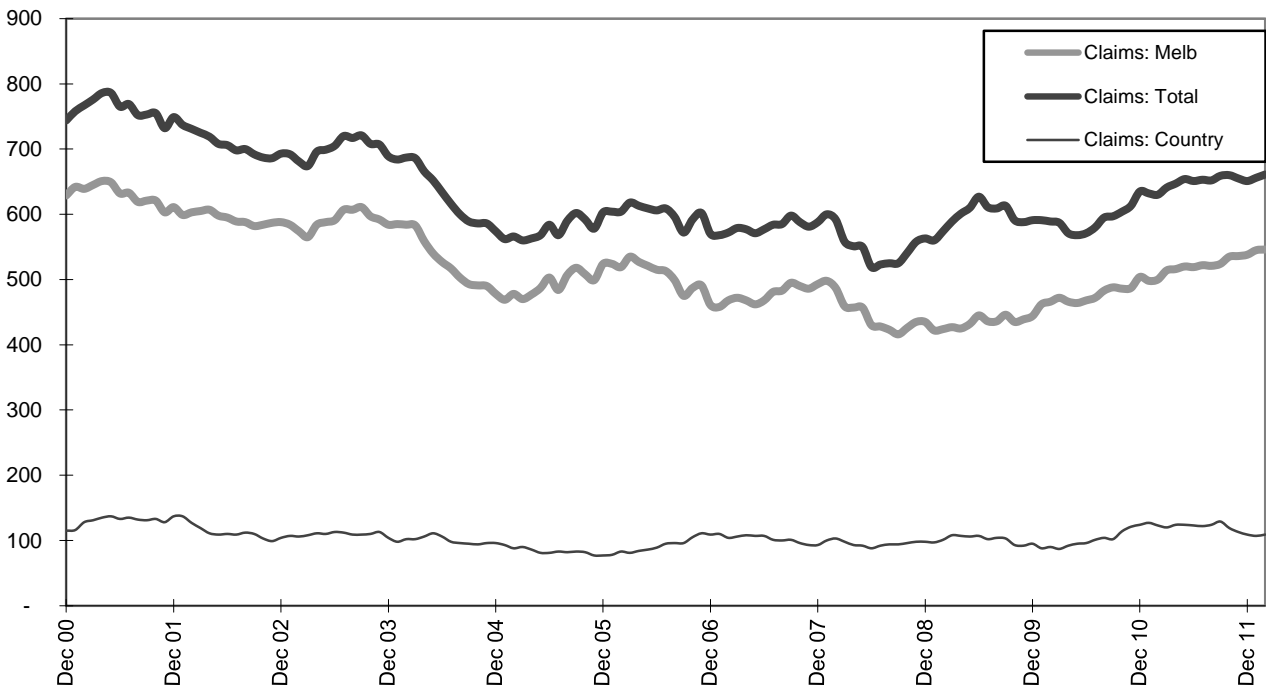
**Graph 2c – Passenger fatalities (Melbourne/country)**



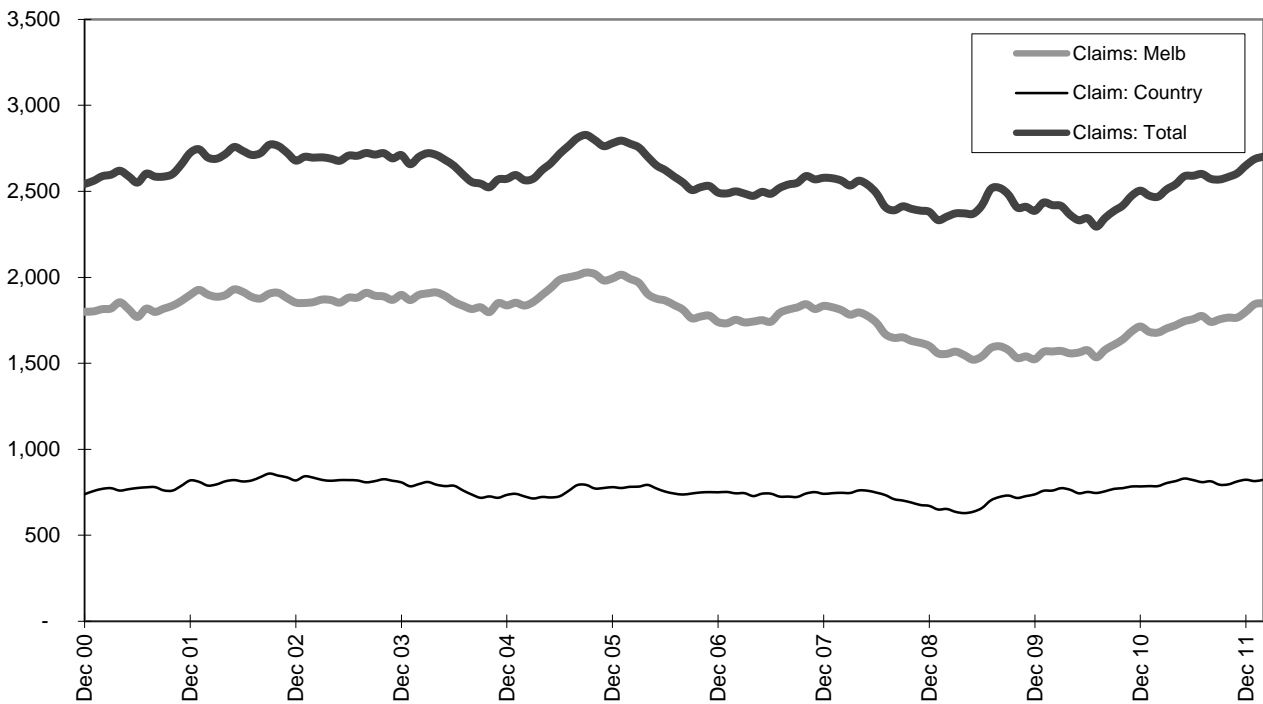
**Graph 2d –Motorcyclist fatalities (Melbourne/country)**



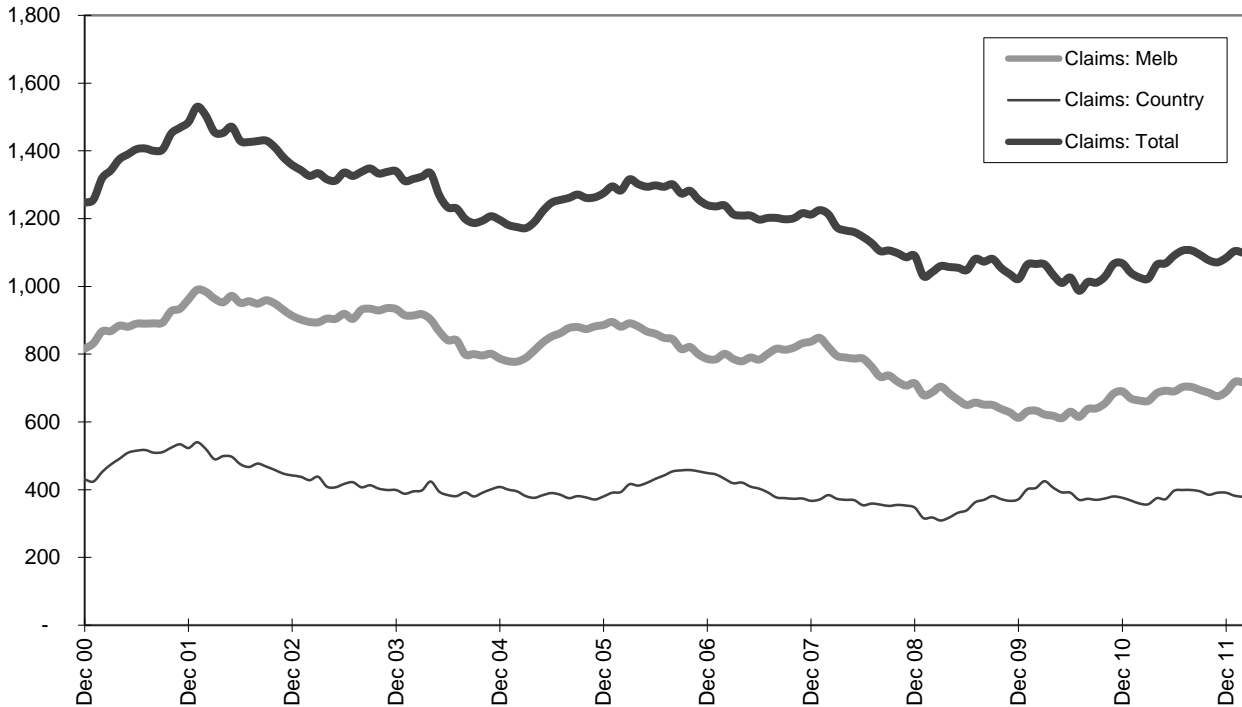
**Graph 3a – Pedestrian Claims involving an acute hospital admission (Melbourne/country)**



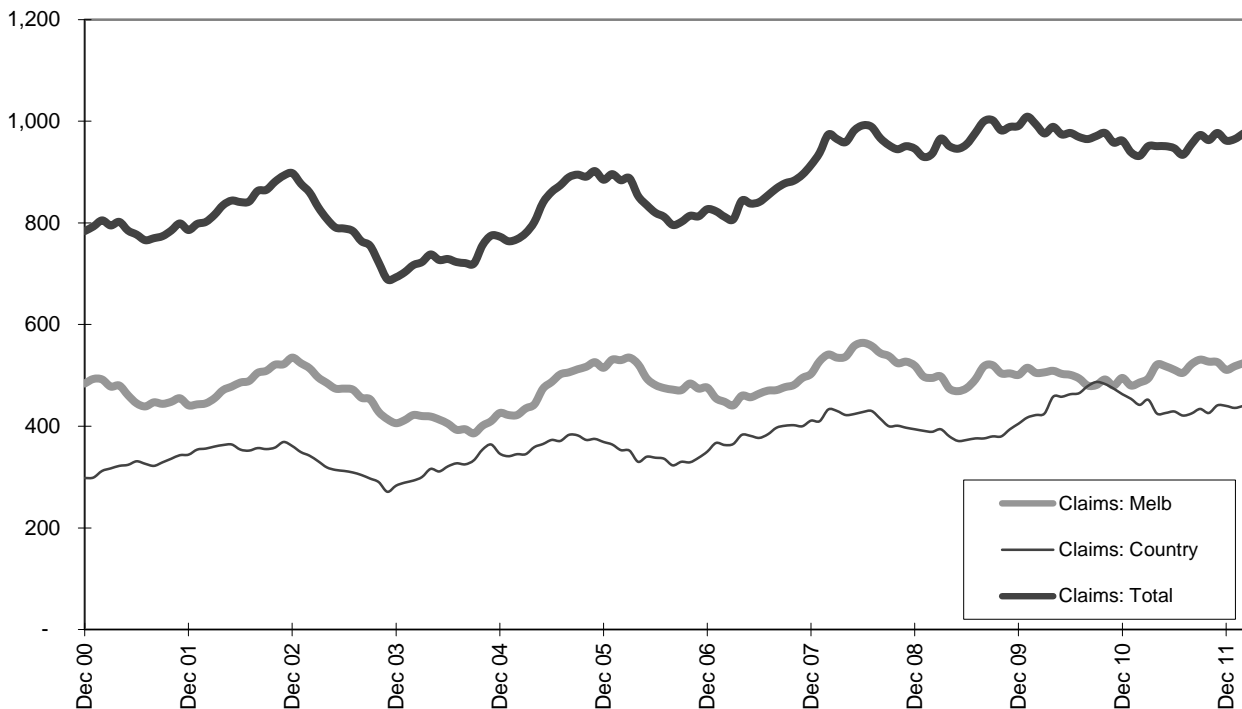
**Graph 3b – Driver Claims involving an acute hospital admission (Melbourne/country)**



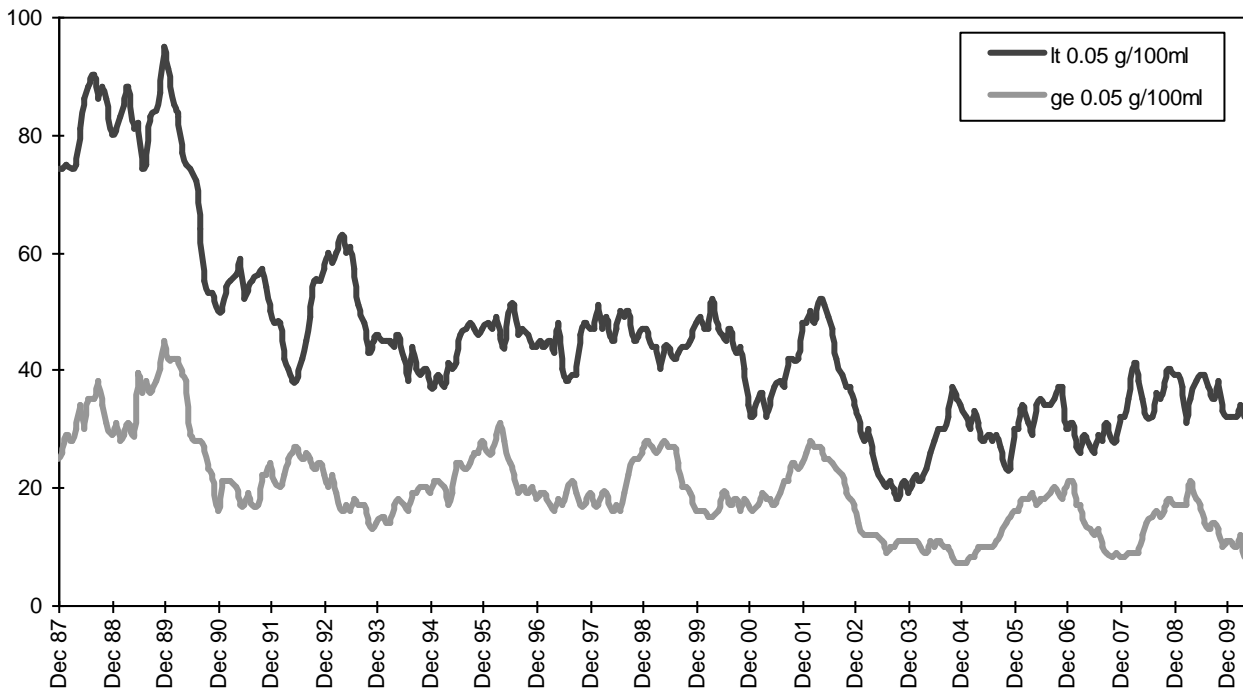
**Graph 3c – Passenger Claims involving an acute hospital admission (Melbourne/country)**



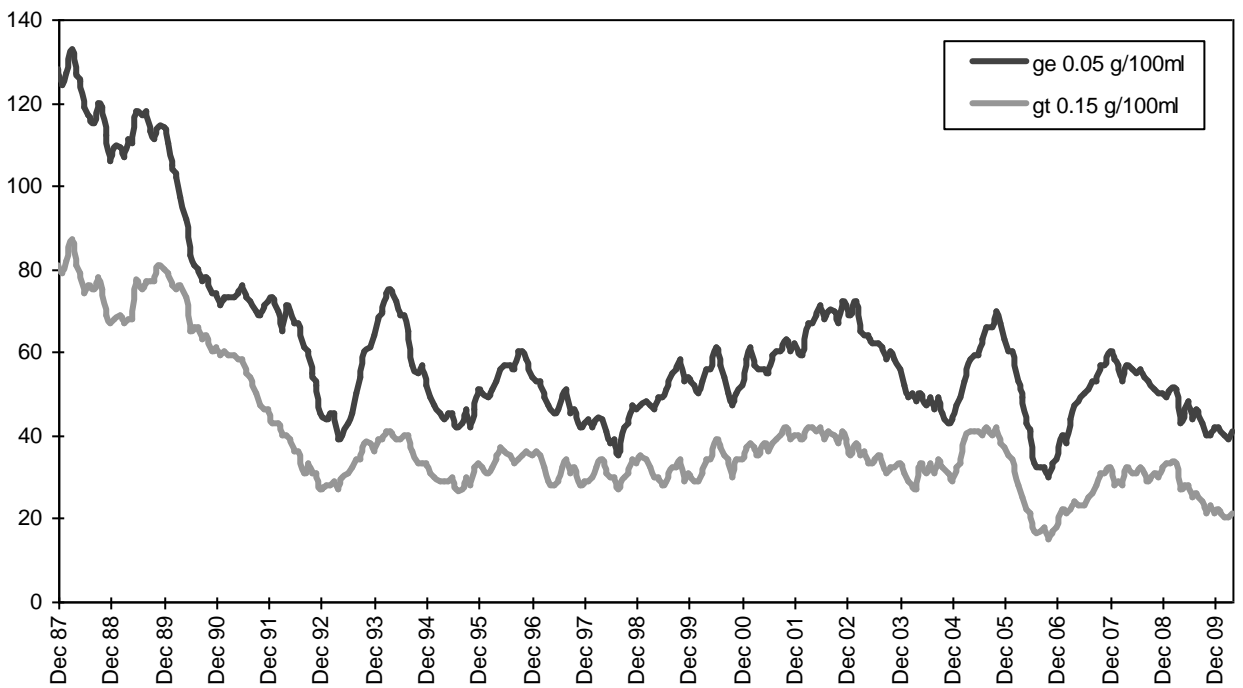
**Graph 3d –Motorcyclist Claims involving an acute hospital admission (Melbourne/country)**



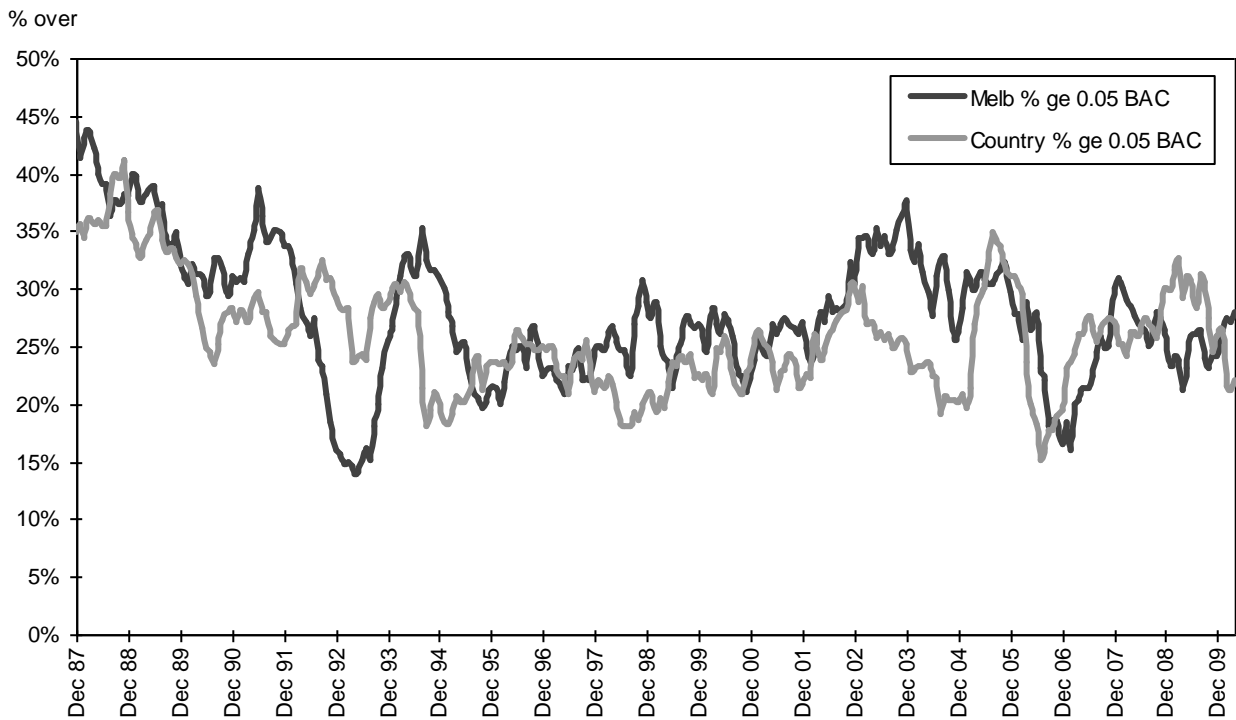
**Graph 4a – Pedestrian fatalities by BAC**



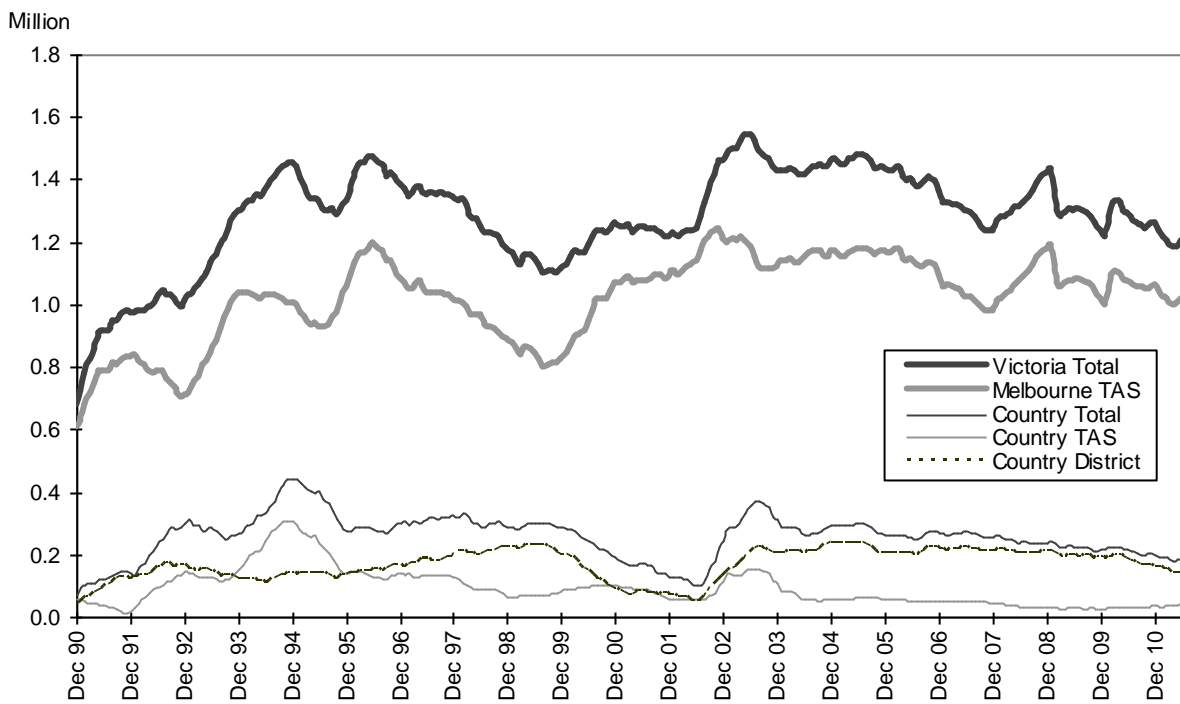
**Graph 4b – Driver/rider fatalities by BAC**



**Graph 4c – Proportion of driver/rider fatalities with a BAC ge 0.05**



**Graph 5a – Booze-Bus RBTs**



**Graph 5b – RBT: Percentage positive readings**

