



ROAD SAFETY STATISTICAL SUMMARY

June 2011



TRANSPORT
ACCIDENT
COMMISSION

60 Brougham Street
Geelong Vic 3220
PO Box 742
Geelong Vic 3220
Ausdoc DX 216079 Geelong

Telephone 1300 654 329
STD Toll Free 1800 332 556
Fax: 03 9656 9300
www.tac.vic.gov.au
ABN 22 033 947 623



Contents

Status Report _____	3
Road Toll (updated snapshot)	
Tables _____	4-7
Fatalities (rolling 12 month)	
Claims involving hospitalisation (rolling 12 month)	
Overview	
Sex	
Road user	
Location	
Age Group	
Altime	
Accident Type	
Police Service Area	
Victorian Road Deaths – monthly totals since 1951 _____	8
Fatalities by Week (2006 to 2011) _____	9
Alcohol Related Deaths _____	10
The National Picture _____	11
Police Enforcement _____	12
Explanations and References _____	13-14
Alcohol times (“Altime”) explained	
Police Service Areas	
Useful internet sites	
Graphs (12 month moving totals) _____	15-19

Note about the data in this report

- All data provided in this report is the data most recently available at time of production. Typically, fatalities data is updated to the end of report month. Similarly, breath test data and safety camera data is updated to the end of the report month. A 6-month lag applies to TAC claims data, a 2-month lag applies to alcohol related fatalities data.

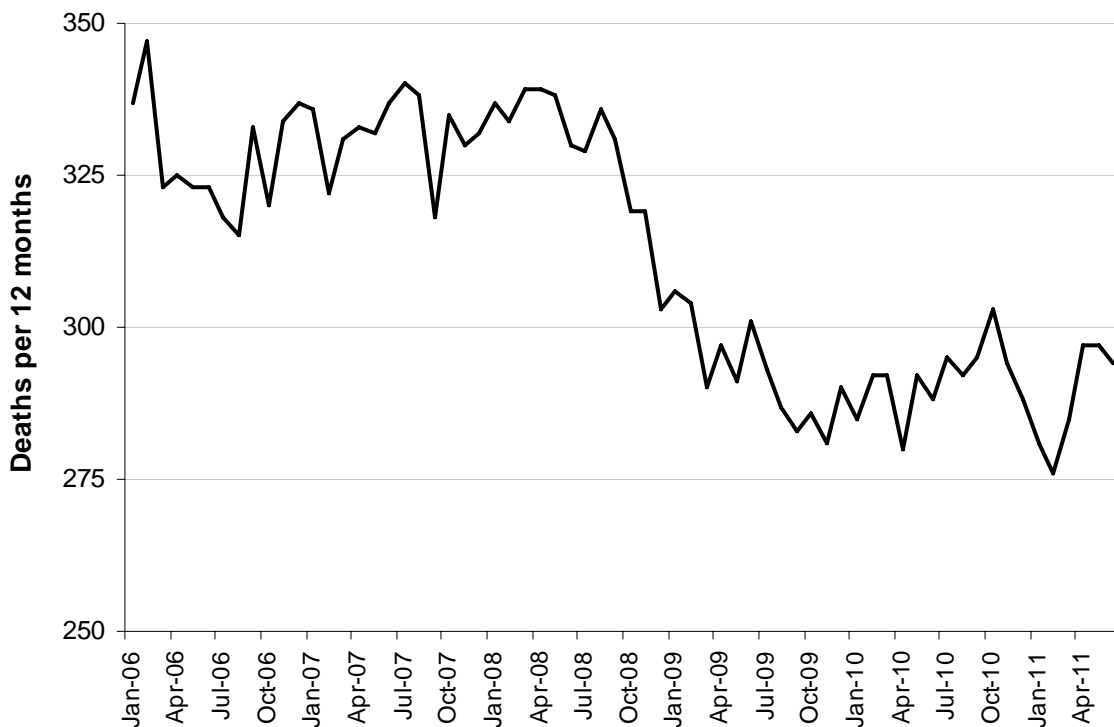
Status Report – Road Toll

Road Toll (year to date, accurate as at midnight 30 June 2011)

- The road toll in 2011 stands at 157, 4.0% more than at the same stage in 2010 (151).
- 31 people died in May 2011 and 23 in June 2011 on Victorian roads. This compares to 31 in May 2010 and 26 in June 2010.

Category	2011	2010	2009	2011 v 2010	2011 v 2009	5 Year Av
Casualties (Rolling 12 Month Total)						
Fatal (to June)	294	288	301	6 (2%)	-7 (-2%)	310
per 10,000 veh	0.70	0.70	0.75	0 (0%)	-0.05 (-7%)	0.79
per 100,000 pop	5.24	5.25	5.61	-0.01 (-0%)	-0.37 (-7%)	5.85
Accidents (Rolling 12 Month Total)						
Fatal (to June)	273	266	271	7 (3%)	2 (1%)	281
per 10,000 veh	0.65	0.65	0.68	0 (0%)	-0.03 (-4%)	0.72
per 100,000 pop	4.87	4.85	5.05	0.02 (0%)	-0.18 (-4%)	5.31

Victoria – Fatalities, rolling 12 months total



Note: Data is subject to revision as additional information about known accidents is received, and as new accident reports are received and processed.

Fatalities: 12 months to June

Category	2011	2010	2009	2011 v 2010		2011 v 2009		5 Year Av
Overview								
Fatalities	294	288	301	6	(2%)	-7	(-2%)	310
Accidents	273	266	271	7	(3%)	2	(1%)	281
Sex								
Male	220	216	202	4	(2%)	18	(9%)	223
Female	74	72	99	2	(3%)	-25	(-25%)	87
Roaduser								
Bicyclist	7	9	10	-2	(-22%)	-3	(-30%)	8
Driver	130	136	140	-6	(-4%)	-10	(-7%)	147
Motorcyclist	46	51	38	-5	(-10%)	8	(21%)	46
Passenger	68	47	54	21	(45%)	14	(26%)	61
Pedestrian	43	45	59	-2	(-4%)	-16	(-27%)	48
Location								
Melbourne	124	138	167	-14	(-10%)	-43	(-26%)	147
Rural Victoria	170	150	134	20	(13%)	36	(27%)	163
Agegroup								
0-4	7	4	7	3	(75%)	0	(0%)	5
5-15	6	8	8	-2	(-25%)	-2	(-25%)	8
16-17	6	6	10	0	(0%)	-4	(-40%)	9
18-20	35	23	42	12	(52%)	-7	(-17%)	34
21-25	44	28	32	16	(57%)	12	(38%)	38
26-29	21	24	21	-3	(-13%)	0	(0%)	25
30-39	28	45	45	-17	(-38%)	-17	(-38%)	44
40-49	40	37	44	3	(8%)	-4	(-9%)	42
50-59	33	35	33	-2	(-6%)	0	(0%)	36
60-69	27	30	18	-3	(-10%)	9	(50%)	24
70+	47	48	41	-1	(-2%)	6	(15%)	45
Alctime								
High (Melb)	65	79	79	-14	(-18%)	-14	(-18%)	78
High (Rural)	98	67	64	31	(46%)	34	(53%)	79
High (Vic)	163	146	143	17	(12%)	20	(14%)	157
Low (Melb)	59	59	88	0	(0%)	-29	(-33%)	69
Low (Rural)	72	83	70	-11	(-13%)	2	(3%)	84
Low (Vic)	131	142	158	-11	(-8%)	-27	(-17%)	153
Accident Type								
Intersection								
Adjacent direction	34	22	17	12	(55%)	17	(100%)	28
Opposing direction	8	6	4	2	(33%)	4	(100%)	8
Mid-block/other								
Head on	32	39	37	-7	(-18%)	-5	(-14%)	39
Same direction	16	21	16	-5	(-24%)	0	(0%)	18
Manoeuvre/o'taking	19	14	25	5	(36%)	-6	(-24%)	16
On path	8	8	5	0	(0%)	3	(60%)	7
Single vehicle	131	122	129	9	(7%)	2	(2%)	135
Other (incl peds)	46	56	68	-10	(-18%)	-22	(-32%)	60

Fatalities: 12 months to June

Category	2011	2010	2009	2011 v 2010		2011 v 2009		5 Year Av
Police Service Area (based on Local Government Area (see p.13))								
BALLARAT	7	3	3	4	(133%)	4	(133%)	4
BANYULE	3	1	4	2	(200%)	-1	(-25%)	2
BASS COAST	7	8	5	-1	(-13%)	2	(40%)	6
BAW BAW	14	4	5	10	(250%)	9	(180%)	8
BAYSIDE	2	1	1	1	(100%)	1	(100%)	2
BENALLA	6	10	9	-4	(-40%)	-3	(-33%)	10
BENDIGO	7	14	4	-7	(-50%)	3	(75%)	9
BOROONDARA	2	5	7	-3	(-60%)	-5	(-71%)	4
BRIMBANK	3	6	5	-3	(-50%)	-2	(-40%)	6
CAMPASPE	6	3	10	3	(100%)	-4	(-40%)	8
CARDINIA	7	5	5	2	(40%)	2	(40%)	6
CASEY	11	7	11	4	(57%)	0	(0%)	12
CENTRAL GOLDFIELDS	12	1	2	11	(1100%)	10	(500%)	5
CORANGAMITE	7	6	4	1	(17%)	3	(75%)	6
DANDENONG	4	6	10	-2	(-33%)	-6	(-60%)	6
DAREBIN	2	1	5	1	(100%)	-3	(-60%)	4
EAST GIPPSLAND	8	9	13	-1	(-11%)	-5	(-38%)	11
FRANKSTON	7	2	12	5	(250%)	-5	(-42%)	6
GEELONG	13	10	7	3	(30%)	6	(86%)	8
GLEN EIRA	2	4	5	-2	(-50%)	-3	(-60%)	4
HOBSONS BAY	1	1	2	0	(0%)	-1	(-50%)	3
HORSHAM	5	4	1	1	(25%)	4	(400%)	4
HUME	4	8	10	-4	(-50%)	-6	(-60%)	7
KINGSTON	1	6	5	-5	(-83%)	-4	(-80%)	5
KNOX	1	5	4	-4	(-80%)	-3	(-75%)	4
LA TROBE	4	7	5	-3	(-43%)	-1	(-20%)	6
MACEDON RANGES	3	9	8	-6	(-67%)	-5	(-63%)	7
MANNINGHAM	0	7	4	-7	(-100%)	-4	(-100%)	3
MARIBYRNONG	1	2	1	-1	(-50%)	0	(0%)	2
MAROONDAH	3	1	0	2	(200%)	3		2
MELBOURNE	4	3	6	1	(33%)	-2	(-33%)	6
MELTON	7	5	9	2	(40%)	-2	(-22%)	6
MILDURA	5	4	3	1	(25%)	2	(67%)	5
MITCHELL	9	11	6	-2	(-18%)	3	(50%)	8
MONASH	6	7	5	-1	(-14%)	1	(20%)	6
MOONEE VALLEY	3	1	4	2	(200%)	-1	(-25%)	4
MOORABOOL	9	6	8	3	(50%)	1	(13%)	7
MORELAND	5	5	6	0	(0%)	-1	(-17%)	4
MORNINGTON PENINSULA	10	8	8	2	(25%)	2	(25%)	10
NILLUMBIK	2	0	2	2		0	(0%)	1
NORTHERN GRAMPIANS	3	3	6	0	(0%)	-3	(-50%)	4
PORT PHILLIP	2	3	1	-1	(-33%)	1	(100%)	2
SHEPPARTON	5	3	8	2	(67%)	-3	(-38%)	6
SOUTHERN GRAMPIANS	3	3	8	0	(0%)	-5	(-63%)	5
STONNINGTON	1	0	1	1		0	(0%)	1
SURF COAST	5	3	2	2	(67%)	3	(150%)	4
SWAN HILL	7	5	3	2	(40%)	4	(133%)	10
WANGARATTA	10	11	2	-1	(-9%)	8	(400%)	8
WARRNAMBOOL	4	6	3	-2	(-33%)	1	(33%)	5
WELLINGTON	8	1	8	7	(700%)	0	(0%)	6
WHITEHORSE	6	7	2	-1	(-14%)	4	(200%)	4
WHITTLESEA	6	14	8	-8	(-57%)	-2	(-25%)	7
WODONGA	3	6	1	-3	(-50%)	2	(200%)	4
WYNDHAM	7	8	7	-1	(-13%)	0	(0%)	6
YARRA	5	3	2	2	(67%)	3	(150%)	3
YARRA RANGES	6	6	15	0	(0%)	-9	(-60%)	10

Claims involving hospital admission: 12 months to December (claim acceptance date)

Category	2010	2009	2008	2010 v 2009	2010 v 2008	5 Year Av
Overview						
Hospital admission claims	5,535	5,410	5,626	125 (2%)	-91 (-2%)	5,582
Sex						
Male	3,166	3,206	3,282	-40 (-1%)	-116 (-4%)	3,245
Female	2,365	2,204	2,344	161 (7%)	21 (1%)	2,336
Roaduser						
Bicyclist	335	313	280	22 (7%)	55 (20%)	300
Driver	2,485	2,383	2,378	102 (4%)	107 (4%)	2,463
Motorcyclist	959	989	946	-30 (-3%)	13 (1%)	927
Passenger	1,054	1,019	1,088	35 (3%)	-34 (-3%)	1,123
Pedestrian	633	591	563	42 (7%)	70 (12%)	589
Tram/train	25	19	11	6 (32%)	14 (127%)	14
Location						
Melbourne	3,717	3,352	3,575	365 (11%)	142 (4%)	3,681
Rural Victoria	1,796	1,712	1,621	84 (5%)	175 (11%)	1,724
Agegroup						
0-4	50	43	56	7 (16%)	-6 (-11%)	51
5-15	220	195	231	25 (13%)	-11 (-5%)	224
16-17	138	156	152	-18 (-12%)	-14 (-9%)	163
18-20	540	593	627	-53 (-9%)	-87 (-14%)	599
21-25	659	685	741	-26 (-4%)	-82 (-11%)	724
26-29	432	425	414	7 (2%)	18 (4%)	433
30-39	870	935	936	-65 (-7%)	-66 (-7%)	945
40-49	825	815	782	10 (1%)	43 (5%)	815
50-59	692	587	644	105 (18%)	48 (7%)	623
60-69	474	384	448	90 (23%)	26 (6%)	420
70+	635	592	595	43 (7%)	40 (7%)	584
Alctime						
High (Melb)	1,642	1,575	1,614	67 (4%)	28 (2%)	1,683
High (Rural)	797	799	714	-2 (-0%)	83 (12%)	755
High (Vic)	2,446	2,558	2,591	-112 (-4%)	-145 (-6%)	2,542
Low (Melb)	2,075	1,777	1,961	298 (17%)	114 (6%)	1,998
Low (Rural)	999	913	907	86 (9%)	92 (10%)	969
Low (Vic)	3,089	2,852	3,035	237 (8%)	54 (2%)	3,040
Accident Type						
Intersection						
Adjacent direction	842	838	808	4 (0%)	34 (4%)	845
Opposing direction	449	438	435	11 (3%)	14 (3%)	438
Mid-block/other						
Head on	316	306	334	10 (3%)	-18 (-5%)	318
Same direction	908	744	760	164 (22%)	148 (19%)	780
Manoeuvre/o'taking	339	307	340	32 (10%)	-1 (-0%)	306
On path	216	212	210	4 (2%)	6 (3%)	198
Single vehicle	1,571	1,650	1,646	-79 (-5%)	-75 (-5%)	1,658
Other (incl peds)	894	913	821	-19 (-2%)	73 (9%)	809

Note: excludes rejected claims and claims for interstate crashes

Claims involving hospital admission: 12 months to December (claim acceptance date)

Category	2010	2009	2008	2010 v 2009		2010 v 2008		5 Year Av
Police Service Area (based on Local Government Area (see p.13))								
BALLARAT	76	76	74	0	(0%)	2	(3%)	70
BANYULE	68	53	76	15	(28%)	-8	(-11%)	66
BASS COAST	78	66	76	12	(18%)	2	(3%)	84
BAW BAW	46	39	38	7	(18%)	8	(21%)	46
BAYSIDE	85	65	57	20	(31%)	28	(49%)	70
BENALLA	122	89	77	33	(37%)	45	(58%)	87
BENDIGO	96	86	89	10	(12%)	7	(8%)	89
BOROONDARA	151	126	118	25	(20%)	33	(28%)	138
BRIMBANK	116	137	167	-21	(-15%)	-51	(-31%)	149
CAMPASPE	76	79	64	-3	(-4%)	12	(19%)	82
CARDINIA	94	77	85	17	(22%)	9	(11%)	83
CASEY	232	211	206	21	(10%)	26	(13%)	227
CENTRAL GOLDFIELDS	29	21	25	8	(38%)	4	(16%)	22
CORANGAMITE	72	63	70	9	(14%)	2	(3%)	62
DANDENONG	188	140	169	48	(34%)	19	(11%)	174
DAREBIN	116	101	98	15	(15%)	18	(18%)	108
EAST GIPPSLAND	60	50	55	10	(20%)	5	(9%)	55
FRANKSTON	152	125	133	27	(22%)	19	(14%)	133
GEELONG	249	227	201	22	(10%)	48	(24%)	234
GLEN EIRA	103	94	100	9	(10%)	3	(3%)	104
HOBSONS BAY	67	58	74	9	(16%)	-7	(-9%)	68
HORSHAM	33	24	21	9	(38%)	12	(57%)	33
HUME	149	161	143	-12	(-7%)	6	(4%)	157
KINGSTON	129	137	139	-8	(-6%)	-10	(-7%)	132
KNOX	123	107	144	16	(15%)	-21	(-15%)	130
LA TROBE	65	40	56	25	(63%)	9	(16%)	55
MACEDON RANGES	88	82	65	6	(7%)	23	(35%)	78
MANNINGHAM	71	57	65	14	(25%)	6	(9%)	71
MARIBYRNONG	58	72	78	-14	(-19%)	-20	(-26%)	72
MAROONDAH	73	59	74	14	(24%)	-1	(-1%)	69
MELBOURNE	217	190	152	27	(14%)	65	(43%)	189
MELTON	47	50	45	-3	(-6%)	2	(4%)	49
MILDURA	29	25	34	4	(16%)	-5	(-15%)	32
MITCHELL	118	93	113	25	(27%)	5	(4%)	112
MONASH	156	154	155	2	(1%)	1	(1%)	159
MOONEE VALLEY	90	83	106	7	(8%)	-16	(-15%)	105
MOORABOOL	77	133	89	-56	(-42%)	-12	(-13%)	89
MORELAND	131	114	148	17	(15%)	-17	(-11%)	135
MORNINGTON PENINSULA	161	145	175	16	(11%)	-14	(-8%)	169
NILLUMBIK	36	26	37	10	(38%)	-1	(-3%)	32
NORTHERN GRAMPIANS	27	27	42	0	(0%)	-15	(-36%)	36
PORT PHILLIP	92	113	120	-21	(-19%)	-28	(-23%)	124
SHEPPARTON	58	82	75	-24	(-29%)	-17	(-23%)	81
SOUTHERN GRAMPIANS	42	35	43	7	(20%)	-1	(-2%)	39
STONNINGTON	118	107	115	11	(10%)	3	(3%)	113
SURF COAST	39	57	44	-18	(-32%)	-5	(-11%)	48
SWAN HILL	32	45	39	-13	(-29%)	-7	(-18%)	43
WANGARATTA	76	70	59	6	(9%)	17	(29%)	67
WARRNAMBOOL	73	42	29	31	(74%)	44	(152%)	49
WELLINGTON	63	79	62	-16	(-20%)	1	(2%)	63
WHITEHORSE	138	117	123	21	(18%)	15	(12%)	134
WHITTLESEA	129	107	110	22	(21%)	19	(17%)	114
WODONGA	73	51	66	22	(43%)	7	(11%)	60
WYNDHAM	105	106	107	-1	(-1%)	-2	(-2%)	116
YARRA	118	96	77	22	(23%)	41	(53%)	96
YARRA RANGES	203	191	194	12	(6%)	9	(5%)	203

Victorian Road Deaths: monthly totals since 1951

Year	Jan	Feb	Mar	Apr	May	Jun	Jul	Aug	Sep	Oct	Nov	Dec	Totals
1951							61	59	52	38	29	41	
1952	45	40	54	61	54	69	67	55	44	44	31	20	584
1953	23	28	54	58	49	42	50	37	44	27	36	32	480
1954	44	42	28	60	55	36	63	33	25	52	30	41	509
1955	44	36	45	55	48	56	64	44	44	32	40	40	548
1956	34	48	51	67	53	65	71	47	39	39	44	48	606
1957	50	41	46	58	52	54	57	53	51	46	32	49	589
1958	50	38	42	58	54	41	54	53	57	40	57	52	596
1959	50	57	61	50	75	55	42	48	52	55	63	63	671
1960	49	53	57	76	70	70	67	62	61	77	52	66	760
1961	63	57	68	74	58	68	78	82	59	62	60	65	794
1962	65	41	76	78	72	80	70	77	62	53	64	70	808
1963	67	56	65	85	66	68	77	55	55	58	61	67	780
1964	73	71	78	71	83	89	80	89	67	66	62	75	904
1965	63	64	86	88	80	87	79	69	81	77	68	87	929
1966	75	59	75	103	74	86	87	80	75	66	90	85	955
1967	61	79	91	97	81	71	59	67	70	68	60	83	887
1968	70	78	86	78	73	76	73	77	72	80	81	105	949
1969	79	68	79	87	86	77	87	83	87	83	94	101	1,011
1970	85	84	106	80	87	88	110	106	78	95	68	74	1,061
1971	83	75	77	68	76	86	85	72	78	73	74	76	923
1972	61	62	75	82	75	71	98	85	83	62	80	81	915
1973	75	75	95	85	64	66	61	85	89	88	66	86	935
1974	56	62	81	60	70	73	67	62	53	70	80	72	806
1975	67	65	87	73	97	94	57	75	69	66	71	89	910
1976	79	78	88	78	69	79	60	70	82	78	77	100	938
1977	65	71	89	79	65	79	70	91	68	74	96	107	954
1978	75	54	95	63	64	69	68	77	65	84	83	72	869
1979	63	60	86	75	45	64	66	75	69	79	72	93	847
1980	48	55	66	59	47	56	60	53	45	58	61	49	657
1981	69	60	58	61	74	65	61	63	68	71	59	57	766
1982	55	53	59	59	67	45	47	71	53	69	65	66	709
1983	42	59	53	63	62	61	65	51	59	43	54	52	664
1984	65	48	58	50	56	48	46	50	71	53	55	58	658
1985	56	47	50	65	75	50	51	50	58	61	56	64	683
1986	56	50	70	69	59	53	42	54	54	52	59	51	669
1987	62	43	57	52	63	59	62	49	62	61	55	80	705
1988	49	58	69	54	79	50	54	52	64	59	43	70	701
1989	76	65	80	59	67	73	52	65	82	50	41	66	776
1990	48	44	55	39	56	64	41	34	48	35	40	44	548
1991	45	39	70	30	34	29	44	47	41	36	35	53	503
1992	34	33	34	47	33	29	23	27	28	38	30	40	396
1993	27	40	37	39	44	33	33	27	34	39	43	40	436
1994	36	31	44	35	27	33	29	37	17	27	32	30	378
1995	38	35	26	33	34	41	27	34	34	32	38	46	418
1996	40	47	35	38	28	29	30	35	49	24	33	30	418
1997	36	25	30	30	40	22	39	26	26	29	39	35	377
1998	29	29	32	36	31	22	40	19	37	36	49	30	390
1999	32	31	35	35	34	24	35	26	28	38	29	37	384
2000	32	26	46	32	39	32	33	29	36	29	44	29	407
2001	44	30	31	32	31	41	34	37	35	51	41	37	444
2002	32	31	45	31	45	32	27	25	31	30	31	37	397
2003	21	41	36	28	31	28	20	23	23	24	24	31	330
2004	32	22	30	30	46	28	27	26	22	28	25	27	343
2005	33	27	47	21	29	23	30	25	25	33	17	36	346
2006	24	37	23	23	27	23	25	22	43	20	31	39	337
2007	23	23	32	25	26	28	28	20	23	37	26	41	332
2008	28	20	37	25	25	20	27	27	18	25	26	25	303
2009	31	18	23	32	19	30	19	21	14	28	21	34	290
2010	26	25	23	20	31	26	26	18	17	36	12	28	288
2011	19	20	32	32	31	23							157
Ave	50	48	57	56	55	53	53	52	51	51	51	57	637
Max	85	84	106	103	97	94	110	106	89	95	96	107	1,061
Min	19	18	23	20	19	20	19	18	14	20	12	20	288

Fatalities by Week (2006 to 2011)

Week Ending	2006	2007	2008	2009	2010	2011	Cumulative 2011	% Change 2011-2010	12 Month Moving Total
2-Jan	3	3	1	3	1	2	2	100%	289
9-Jan	3	2	8	11	6	2	4	-43%	285
16-Jan	4	7	5	6	1	7	11	38%	291
23-Jan	9	5	4	2	9	4	15	-12%	286
30-Jan	5	5	8	8	6	3	18	-22%	283
6-Feb	4	7	5	1	9	8	26	-19%	282
13-Feb	6	4	4	10	5	3	29	-22%	280
20-Feb	18	10	4	3	8	5	34	-24%	277
27-Feb	8	3	8	5	4	4	38	-22%	277
6-Mar	3	9	8	2	6	8	46	-16%	279
13-Mar	6	9	5	6	5	6	52	-13%	280
20-Mar	3	3	13	3	4	8	60	-6%	284
27-Mar	8	8	7	7	8	7	67	-7%	283
3-Apr	5	4	10	8	5	5	72	-6%	283
10-Apr	4	11	3	5	4	13	85	5%	292
17-Apr	3	4	6	8	6	5	90	3%	291
24-Apr	2	3	6	10	4	6	96	5%	293
1-May	13	7	5	6	4	7	103	8%	296
8-May	11	3	7	7	3	5	108	10%	298
15-May	3	6	4	4	9	9	117	9%	298
22-May	4	8	8	1	6	10	127	12%	302
29-May	8	6	6	3	12	3	130	4%	293
5-Jun	6	15	2	7	2	5	135	6%	296
12-Jun	4	3	6	6	7	9	144	7%	298
19-Jun	7	4	4	8	8	3	147	4%	293
26-Jun	6	7	7	6	5	6	153	4%	294
3-Jul	1	2	5	7	8	4	157	1%	290
10-Jul	7	9	10	9	4	10	167	5%	296
17-Jul	7	7	2	2	3	6	173	7%	299
24-Jul	7	6	3	5	5	5	178	7%	299
31-Jul	4	5	8	3	10				
7-Aug	7	2	8	3	7				
14-Aug	4	2	6	11	3				
21-Aug	5	4	3	4	5				
28-Aug	5	11	7	1	2				
4-Sep	2	3	5	4	3				
11-Sep	5	7	3	1	4				
18-Sep	13	4	6	7	1				
25-Sep	12	8	6	2	6				
2-Oct	12	5	6	2	4				
9-Oct	9	12	8	2	12				
16-Oct	5	6	4	8	7				
23-Oct	4	8	4	9	8				
30-Oct	1	6	4	8	6				
6-Nov	10	6	4	4	5				
13-Nov	2	7	7	6	0				
20-Nov	9	4	10	6	3				
27-Nov	8	7	3	4	3				
4-Dec	16	8	4	5	7				
11-Dec	4	16	9	5	6				
18-Dec	6	5	3	11	6				
25-Dec	11	8	9	10	9				
31-Dec	5	8	2	5	4				
Total	337	332	303	290	288	178			

Alcohol Related Deaths

NOTE: UPDATES TO THIS DATA WERE NOT AVAILABLE AT TIME OF REPORT

BAC Fatalities (12 months to April 2010)

- 24% of killed and tested drivers and riders had a BAC at 0.05 g/100ml or over (41 of 172) compared to 25% over the previous 12 month period (43 of 169).
- In Melbourne, 21 drivers/riders killed and tested were at or over 0.05, with 38% of these having a BAC in excess of 0.15 g/100ml. Across rural Victoria, 20 drivers/riders killed and tested were at or over 0.05, with 65% of these having a BAC over 0.15.
- Of the 41 drivers and riders killed and tested at or over 0.05, 15% (6) were aged under 21, 39% (16) were aged 21-29, 27% (11) were aged 30-39 and 20% (8) were aged 40 years and over. In the previous year (43 killed) the corresponding figures were 19% (8), 28% (12), 19% (8) and 35% (15), respectively.

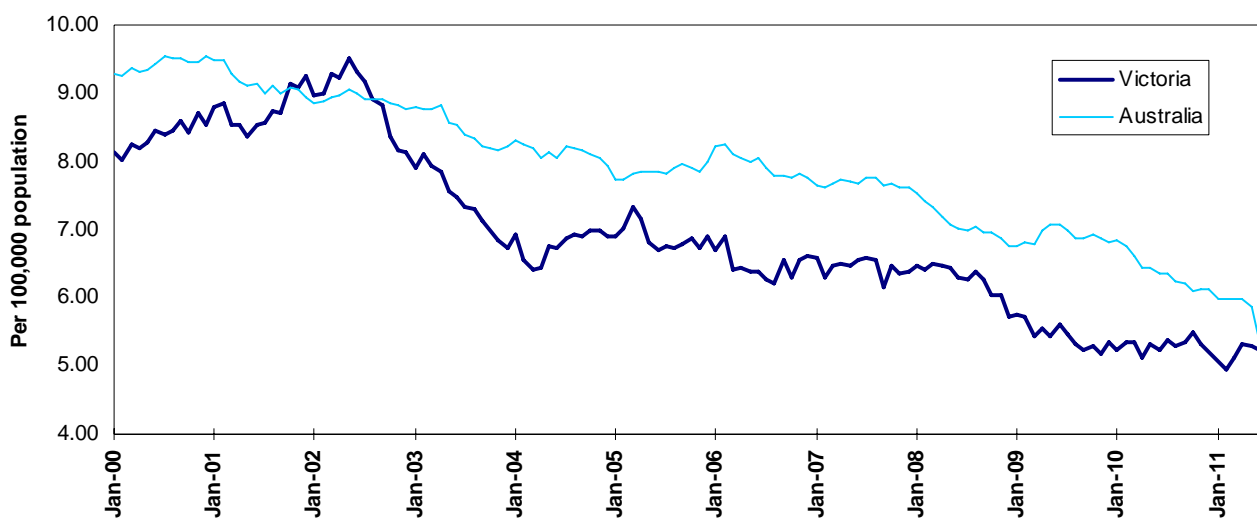
Category	2010	2009	2008	2010 v 2009	2010 v 2008	5 Year Av
Melbourne Drivers and Riders						
<0.05	55	63	63	-8	(-13%)	62
[a] at 0.05 & above	21	17	25	4	(24%)	21
% at 0.05 & above	(28%)	(21%)	(28%)			(25%)
[b] >0.15	8	10	12	-2	(-20%)	9
%>0.15	(11%)	(13%)	(14%)			(11%)
[b] as a % of [a]	(38%)	(59%)	(48%)			(43%)
BAC Unknown	5	3	1	2	(67%)	3
Country Drivers and Riders						
<0.05	76	63	90	13	(21%)	78
[a] at 0.05 & above	20	26	32	-6	(-23%)	26
% at 0.05 & above	(21%)	(29%)	(26%)			(25%)
[b] >0.15	13	17	20	-4	(-24%)	17
%>0.15	(14%)	(19%)	(16%)			(16%)
[b] as a % of [a]	(65%)	(65%)	(63%)			(64%)
BAC Unknown	7	2	1	5	(250%)	5
Victorian Total Drivers and Riders						
<0.05	131	126	153	5	(4%)	140
[a] at 0.05 & above	41	43	57	-2	(-5%)	47
% at 0.05 & above	(24%)	(25%)	(27%)			(25%)
[b] >0.15	21	27	32	-6	(-22%)	26
%>0.15	(12%)	(16%)	(15%)			(14%)
[b] as a % of [a]	(51%)	(63%)	(56%)			(54%)
BAC Unknown	12	5	2	7	(140%)	7
Victorian Total Pedestrians						
<0.05	32	35	38	-3	(-9%)	33
[a] at 0.05 & above	8	21	9	-13	(-62%)	14
% at 0.05 & above	(20%)	(38%)	(19%)			(30%)
[b] >0.15	3	10	8	-7	(-70%)	9
%>0.15	(8%)	(18%)	(17%)			(19%)
[b] as a % of [a]	(38%)	(48%)	(89%)			(62%)
BAC Unknown	6	4	2	2	(50%)	4

The National Picture

State	Killed (12 months to June)					2011 v 2010	
	2011	2010	2009	2008			
NSW	370	449	432	376	-79	(-18%)	
VIC	294	288	301	330	6	(2%)	
QLD	250	269	351	331	-19	(-7%)	
SA	111	118	128	107	-7	(-6%)	
WA	196	184	199	221	12	(7%)	
TAS	32	44	50	41	-12	(-27%)	
NT	44	35	56	69	9	(26%)	
ACT	11	20	13	14	-9	(-45%)	
AUST TOTAL	1,308	1,407	1,530	1,489	-99	(-7%)	
AUST minus VIC	1,014	1,119	1,229	1,159	-105	(-9%)	

State	Deaths per 10,000 registered vehicles (12 months to June)			Deaths per 100,000 population (12 months to June)		
	2011	2010	2009	2011	2010	2009
NSW	0.78	0.96	0.95	5.06	6.26	6.14
VIC	0.70	0.70	0.75	5.24	5.25	5.61
QLD	0.73	0.81	1.08	5.47	6.03	8.08
SA	0.88	0.96	1.07	6.70	7.22	7.94
WA	1.03	0.99	1.10	8.43	8.12	9.05
TAS	0.77	1.08	1.26	6.27	8.71	9.99
NT	3.16	2.63	4.40	18.96	15.40	25.18
ACT	0.42	0.79	0.53	3.03	5.63	3.74
AUST TOTAL	0.80	0.88	0.98	5.79	6.36	7.08
AUST minus VIC	0.83	0.94	1.06	5.98	6.73	7.56

Victoria v Australia – 12 Month Moving Fatality Rate



Booze-Bus Random Breath Testing*

12 months to April 2011 (monthly totals)

	2010						2011					
	May	Jun	Jul	Aug	Sep	Oct	Nov	Dec	Jan	Feb	Mar	Apr
Melbourne	89,275	85,838	86,195	79,603	91,365	78,241	81,341	97,729	78,392	67,733	80,249	85,872
Country	13,669	13,900	13,420	9,459	14,650	15,957	19,375	19,112	20,355	16,658	11,753	13,440
Vic Total	102,944	99,738	99,615	89,062	106,015	94,198	100,716	116,841	98,747	84,391	92,002	99,312

12 months to April 2011 vs previous 12 months

	2011	2010	2009	2011 v 2010	2011 v 2009
Melbourne	1,001,833	1,102,307	1,071,369	-100,474 (-9%)	-69,536 (-6%)
Country	181,748	227,182	222,369	-45,434 (-20%)	-40,621 (-18%)
Vic Total	1,183,581	1,329,489	1,293,806	-145,908 (-11%)	-110,225 (-9%)

*At the time of reporting, the most recent available data was April 2011.

Mobile Safety Camera Data

Speed Infringements Issued from Mobile Cameras (monthly totals)

Monthly Average = 48,466

2010						2011					
Jul	Aug	Sep	Oct	Nov	Dec	Jan	Feb	Mar	Apr	May	Jun
52,675	47,719	49,546	49,408	47,500	44,921	51,861	41,104	52,252	40,271	53,774	50,556

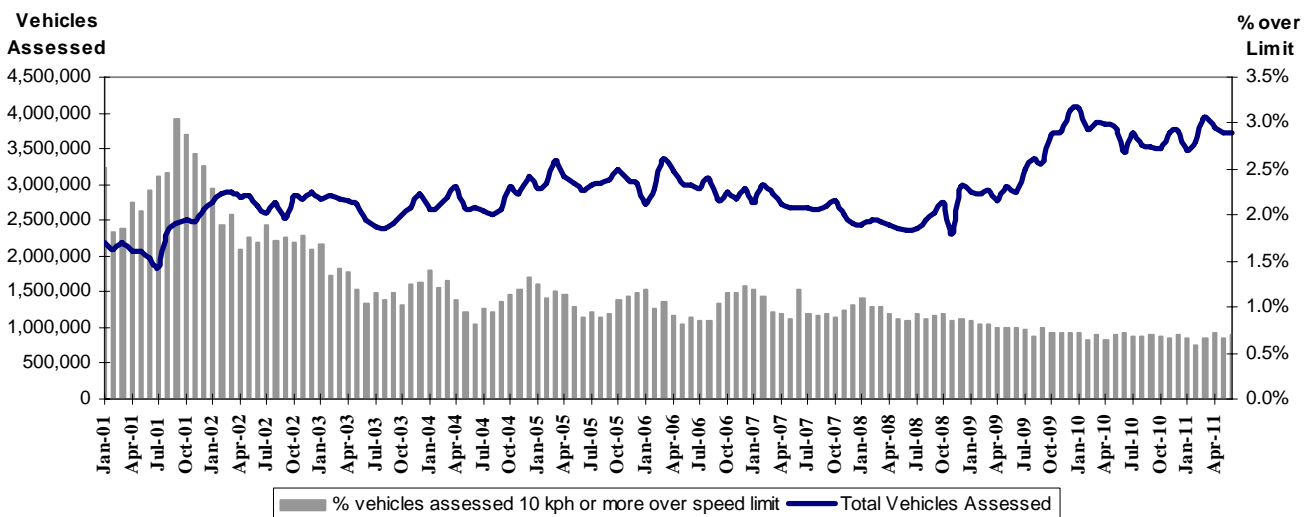
Excessive Speed Infringements Issued from Mobile Cameras (monthly totals)

Monthly Average = 408

2010						2011					
Jul	Aug	Sep	Oct	Nov	Dec	Jan	Feb	Mar	Apr	May	Jun
422	311	354	377	330	363	352	398	466	406	525	587

Note: An ESI is defined as 25km/h over the speed limit except in a 110km/h zone where it is 20km/h over the limit.

Mobile Safety Cameras – Vehicles assessed and percentage of vehicles assessed 10km/h or more over speed limit per month



Explanations and References

Hi-Alcetime is those times of the day and week (*shaded in the table below*) when casualty crashes are ten times more likely to involve alcohol than casualty crashes at other (Lo-Alcetime) times.

	12am - 6am	6am - 8am	8am - 10am	10am - 2pm	2pm - 4pm	4pm - 6pm	6pm - 12pm
Monday							
Tuesday							
Wednesday							
Thursday							
Friday							
Saturday							
Sunday							

Police Service Areas align with Local Government Areas. Most Police Service Areas are equivalent to a single Local Government Area, while the remainder comprise two or three Local Government Areas.

Police Service Area	Local Government Area(s)	Police Service Area	Local Government Area(s)
BALLARAT	BALLARAT	MARIBYRNONG	MARIBYRNONG
BANYULE	BANYULE	MAROONDAH	MAROONDAH
BASS COAST	BASS COAST, SOUTH GIPPSLAND	MELBOURNE	MELBOURNE
BAW BAW	BAWBAW	MELTON	MELTON
BAYSIDE	BAYSIDE	MILDURA	MILDURA
BENALLA	BENALLA, MANSFIELD, STRATHBOGIE	MITCHELL	MITCHELL, MURRINDINDI
BENDIGO	GREATER BENDIGO, LODDON	MONASH	MONASH
BOROONDARA	BOROONDARA	MOONEE VALLEY	MOONEE VALLEY
BRIMBANK	BRIMBANK	MOORABOOL	GOLDEN PLAINS, HEPBURN, MOORABOOL
CAMPASPE	CAMPASPE	MORELAND	MORELAND
CARDINIA	CARDINIA	MORNINGTON PENINSULA	MORNINGTON PENINSULA
CASEY	CASEY	NILLUMBIK	NILLUMBIK
CENTRAL GOLDFIELDS	CENTRAL GOLDFIELDS, PYRENEES	NORTHERN GRAMPIANS	ARARAT, NORTHERN GRAMPIANS, YARRIAMBIACK
CORANGAMITE	COLAC-OTWAY, CORANGAMITE	PORT PHILLIP	PORT PHILLIP
DANDENONG	GREATER DANDENONG	SHEPPARTON	GREATER SHEPPARTON
DAREBIN	DAREBIN	SOUTHERN GRAMPIANS	GLENELG, SOUTHERN GRAMPIANS
EAST GIPPSLAND	EAST GIPPSLAND	STONNINGTON	STONNINGTON
FRANKSTON	FRANKSTON	SURFCOAST	SURFCOAST
GEELONG	GREATER GEELONG, QUEENSCLIFF	SWANHILL	BULOKE
GLENEIRA	GLENEIRA	WANGARATTA	ALPINE, WANGARATTA
HOBSONS BAY	HOBSONSBAY	WARRNAMBOOL	MOYNE, WARRNAMBOOL
HORSHAM	HINDMARSH, HORSHAM, WESTWIMMERA	WELLINGTON	WELLINGTON
HUME	HUME	WHITEHORSE	WHITEHORSE
KINGSTON	KINGSTON	WHITTLESEA	WHITTLESEA
KNOX	KNOX	WODONGA	INDIGO, TOWONG, WODONGA
LATROBE	LATROBE	WYNDHAM	WYNDHAM
MACEDON RANGES	MOUNT ALEXANDER, MACEDON RANGES	YARRA	YARRA
MANNINGHAM	MANNINGHAM	YARRA RANGES	YARRA RANGES

Useful Internet Sites

TAC Sites

- TAC Safety (Road Safety) www.tacsafety.com.au
- TAC How safe is your car www.howsafeisyourcar.com.au
- TAC Learners Log www.learnerslog.com.au
- TAC Motorcycle Safety Website www.spokes.com.au
- TAC Corporate site www.tac.vic.gov.au

Victorian Sites:

- arrive alive www.vicroads.vic.gov.au
- VicRoads www.vicroads.vic.gov.au
- Victorian Police www.police.vic.gov.au
- Parliamentary Road Safety Committee www.parliament.vic.gov.au/rsc/
- ARRB Transport Research www.arrb.com.au
- RACV www.racv.com.au
- Monash University Accident Research Centre www.monash.edu.au/muarc
- Roadsafe www.roadsafe.org.au

National and Interstate Sites:

- Australian Transport Safety Bureau www.atsb.gov.au
- Roads and Traffic Authority (NSW) www.rta.nsw.gov.au
- Queensland Transport - Road Safety transport.qld.gov.au/Home/Safety/Road
- Department of Transport (SA) www.transport.sa.gov.au/index.htm
- Main Roads Western Australia - Road Safety www.mrwa.wa.gov.au

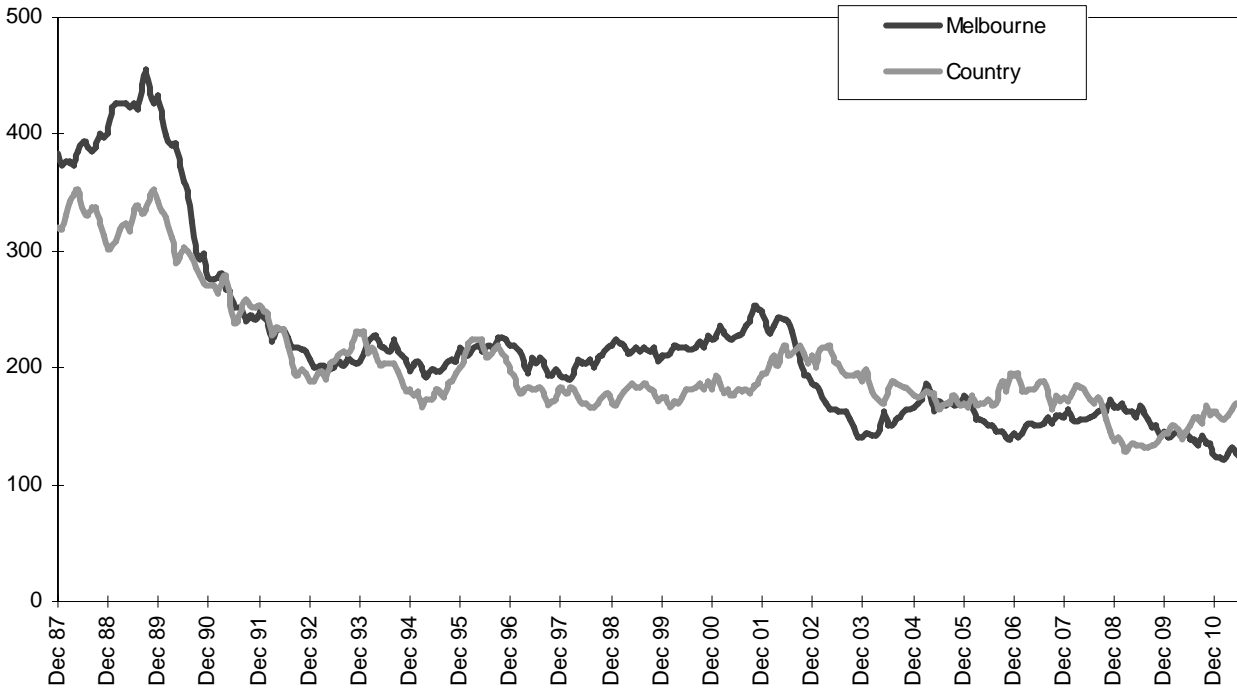
International Sites:

- National Highway Traffic Safety Admin (USA) www.nhtsa.dot.gov
- Swedish Road and Transport Institute (VTI) www.vti.se
- SWOV Institute for Road Safety Research www.swov.nl

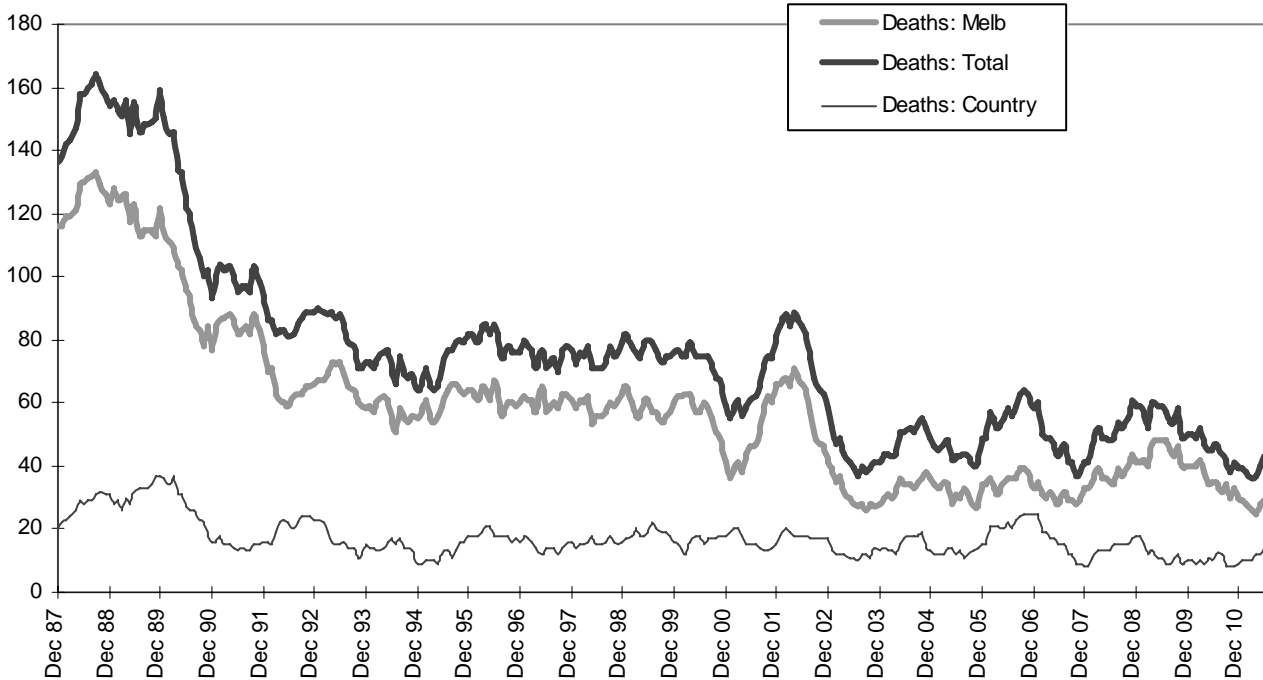
Related Sites:

- Australian Drug Foundation www.adf.org.au
- Bicycle Victoria www.bv.com.au

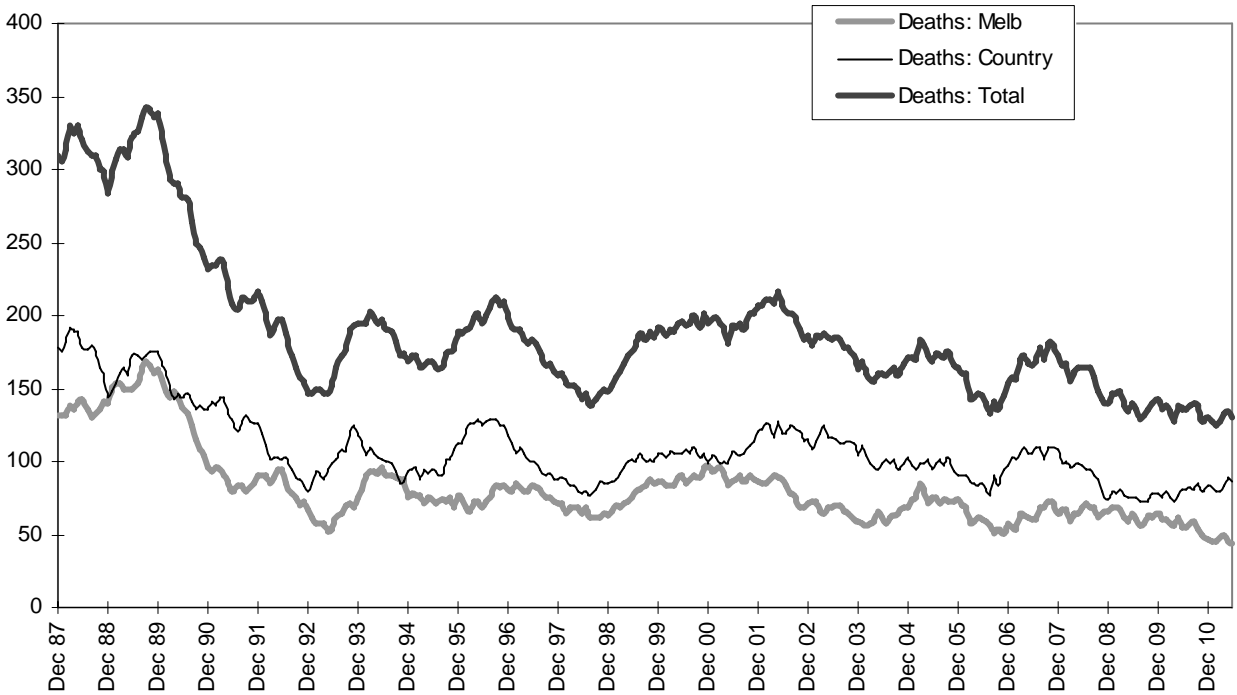
Graph 1 – Melbourne/country fatalities



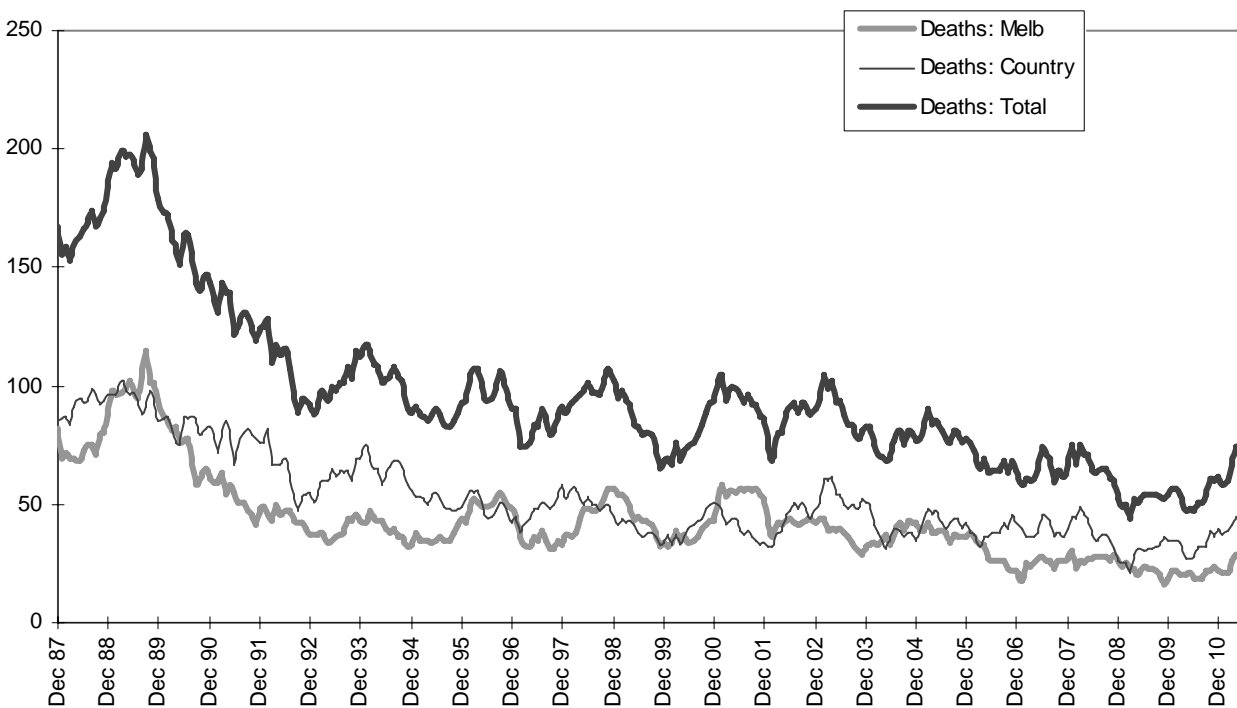
Graph 2a – Pedestrian fatalities (Melbourne/country)



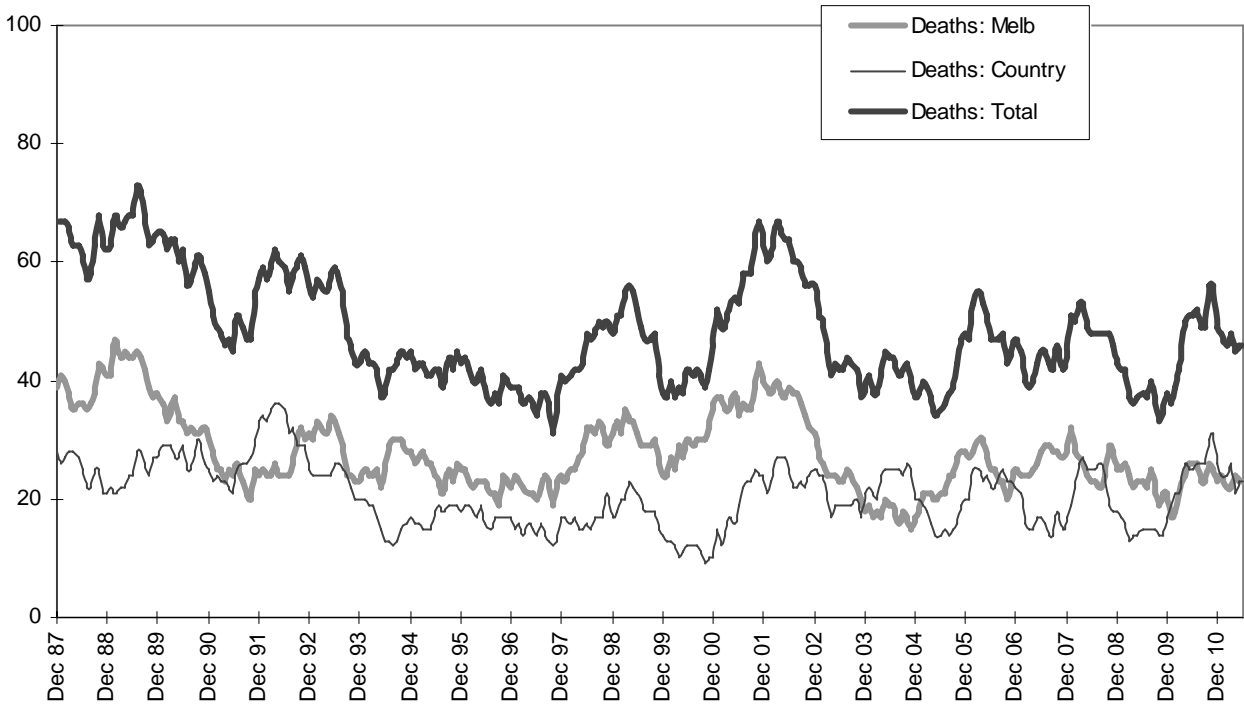
Graph 2b – Driver fatalities (Melbourne/country)



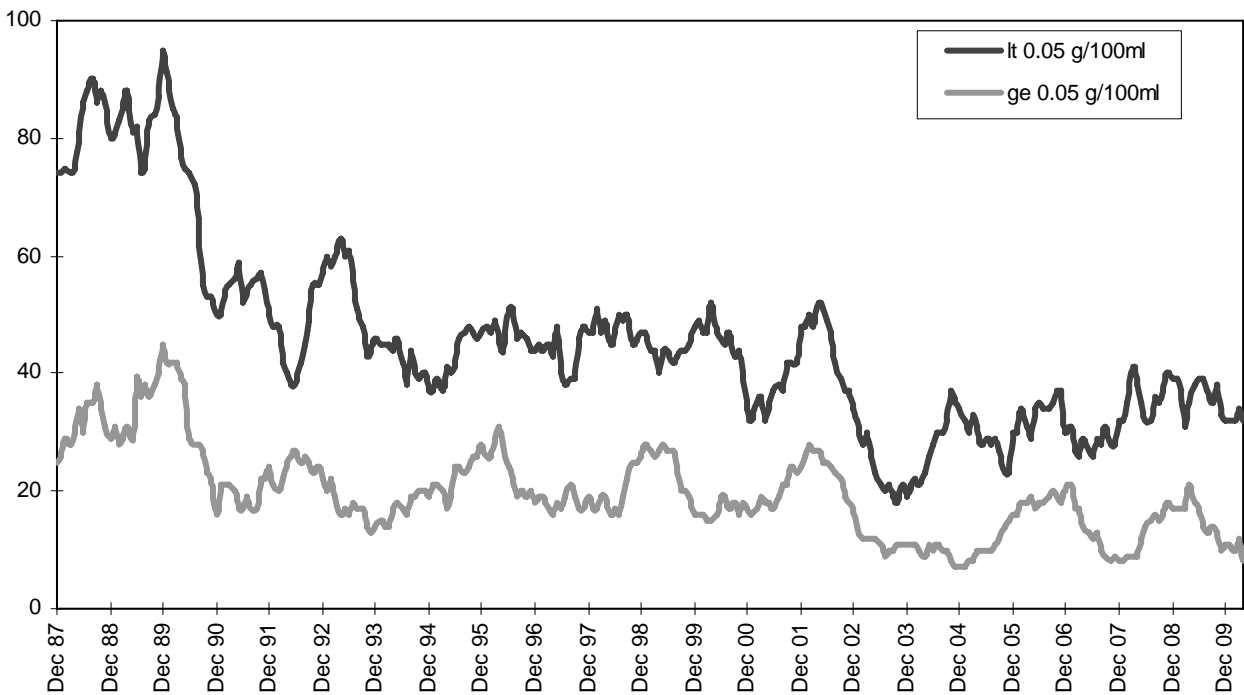
Graph 2c – Passenger fatalities (Melbourne/country)



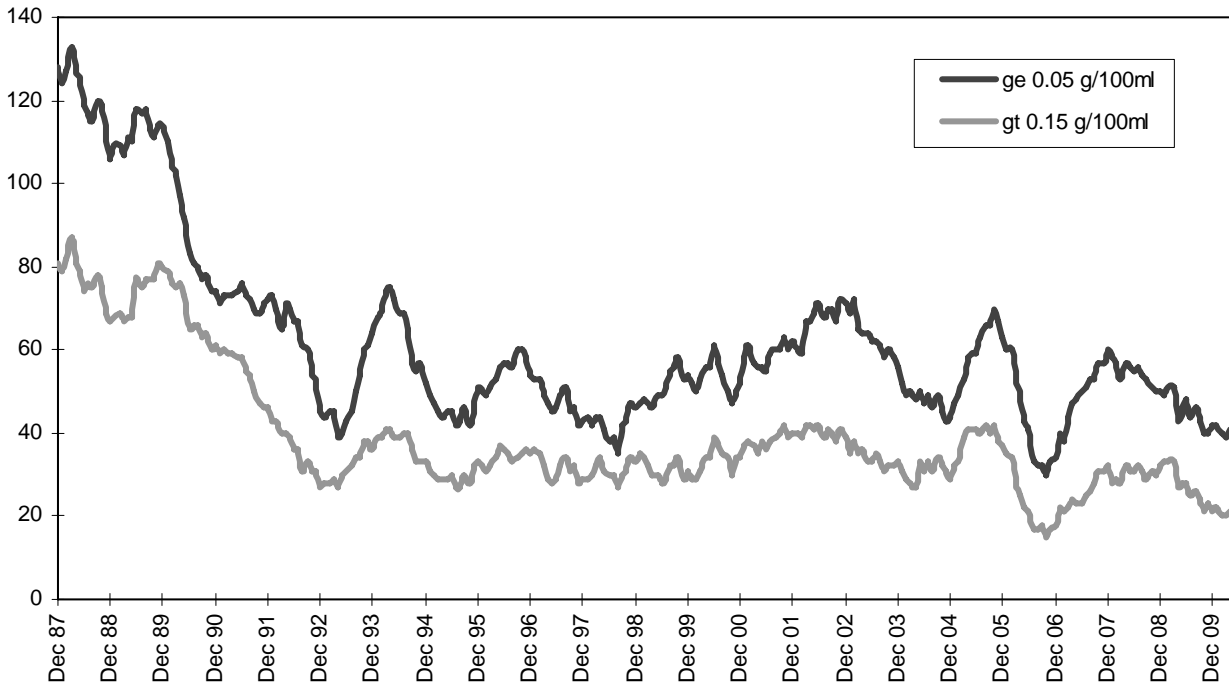
Graph 2d –Motorcyclist fatalities (Melbourne/country)



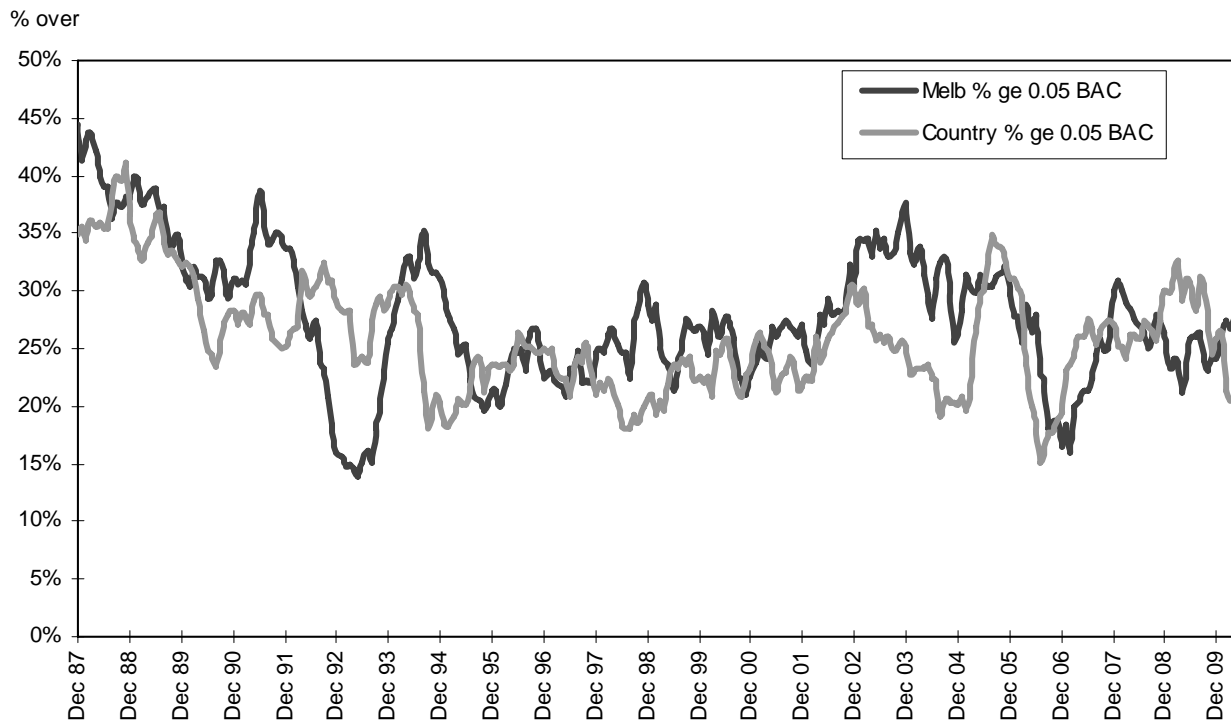
Graph 3a – Pedestrian deaths by BAC



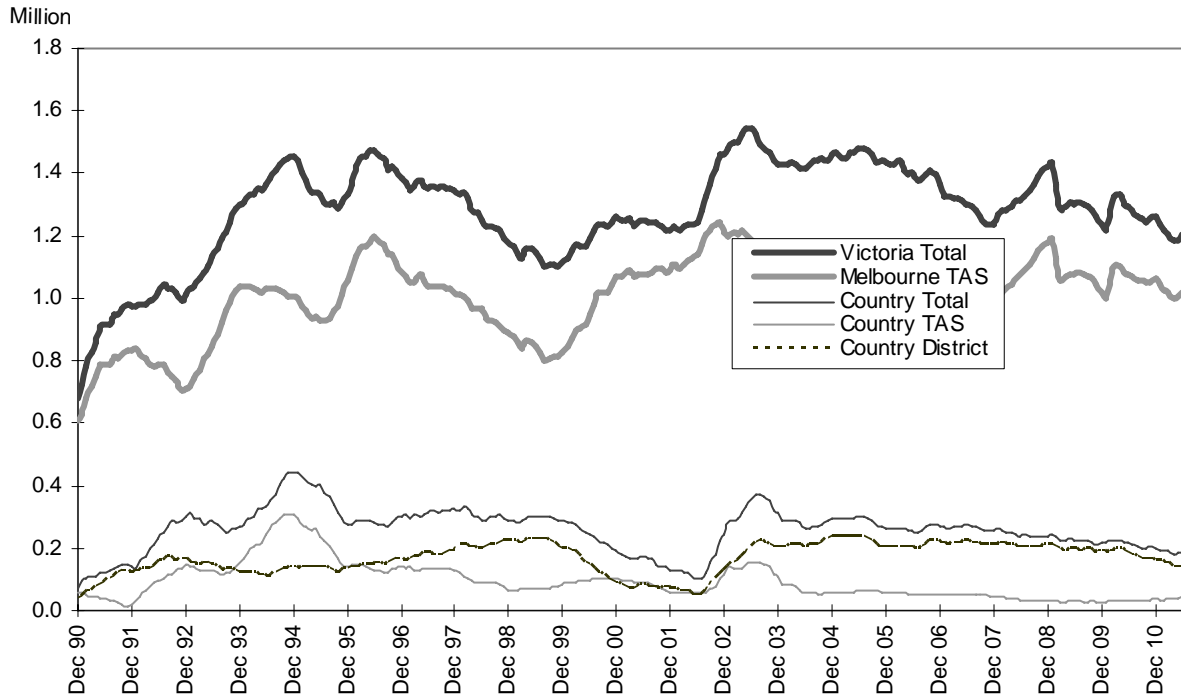
Graph 3b – Driver/rider deaths by BAC



Graph 3c – Proportion of driver/rider deaths with a BAC ge 0.05



Graph 4a – Booze-Bus RBTs



Graph 4b – RBT: Percentage positive readings

