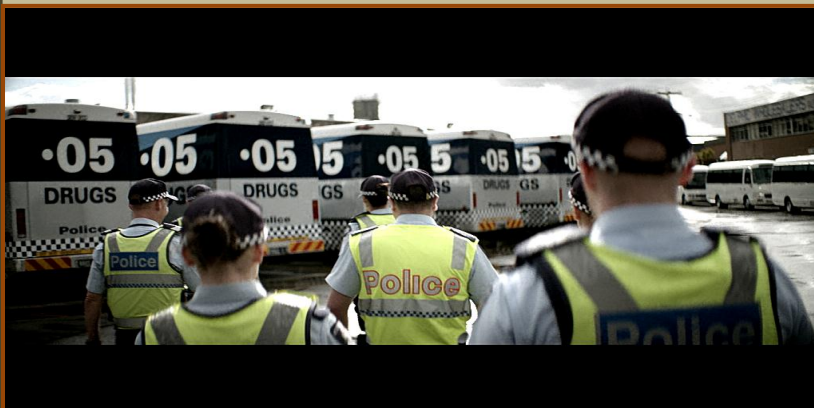


# ROAD SAFETY STATISTICAL SUMMARY

## April 2015



**TRANSPORT  
ACCIDENT  
COMMISSION**

60 Brougham Street  
Geelong Vic 3220  
PO Box 742  
Geelong Vic 3220  
Ausdoc DX 216079 Geelong

Telephone 1300 654 329  
STD Toll Free 1800 332 556  
Fax: 03 9656 9300  
www.tac.vic.gov.au  
ABN 22 033 947 623



## Contents

Status Report.....	4
Fatalities.....	4
Claims involving an acute hospital admission* .....	5
Fatalities: 12 months to April 2015 .....	6
Claims involving acute hospitalisation over 14 days: 12 months to October 2014 (claim acceptance date) .....	8
Claims involving an acute hospital admission: 12 months to October 2014 (claim acceptance date).....	10
Fatalities: Victorian monthly totals since 1951 .....	12
Fatalities by Week (2009 to 2015).....	13
The National Picture.....	14
Booze-Bus Random Breath Testing .....	15
Mobile Safety Camera Data .....	15
Explanations and References .....	16
Useful Internet Sites .....	17
Figures .....	18

### Note about the data in this report

- All data provided in this report is the data most recently available at time of production. Fatalities, breath-test data and safety camera data are updated to the end of report month. A 6-month lag applies to TAC claims data.
- Reported data will have one extra day of exposure for leap years.
- Data is subject to revision as additional information about known accidents/claims is received, and as new accident/claim reports are received and processed.

\*An acute hospital admission refers to a hospital admission that occurred within 7 days of accident.

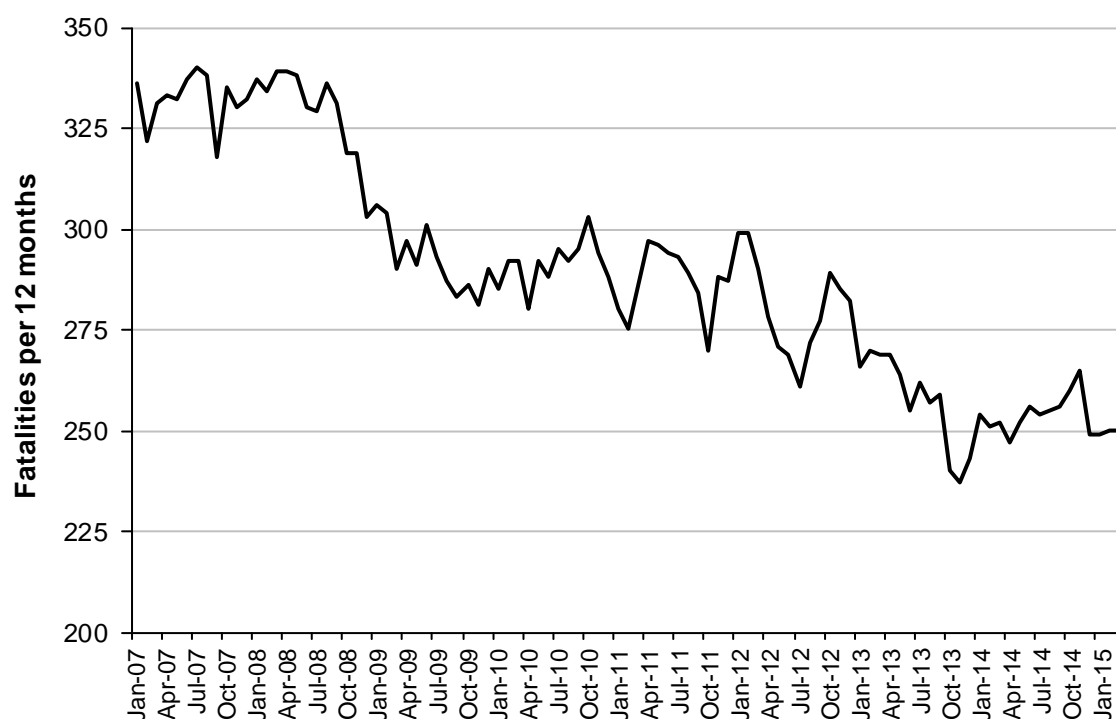
## Status Report

### Fatalities

- The rolling 12 month number of road fatalities in April 2015 stands at 255, 3% more than in 2014 (247).
- 21 people were fatally injured in April 2015 on Victorian roads. This compares to 14 in April 2014.

### Fatalities (rolling 12 month, to end April 2015)

Category	2015	2014	2013	2015 v 2014	2014 v 2015	5 Year Av
<b>Fatal Injuries (Rolling 12 Month Total)</b>						
Fatal (to April)	255	247	269	+8	(+3%)	269
per 10,000 veh	0.56	0.55	0.62	+0.01	(+2%)	0.63
per 100,000 pop	4.34	4.28	4.75	+0.06	(+1%)	4.84
<b>Accidents (Rolling 12 Month Total)</b>						
Fatal (to April)	232	222	247	10	(+5%)	255
per 10,000 veh	0.51	0.50	0.57	+0.01	(+2%)	0.63
per 100,000 pop	3.95	3.85	4.36	0.1	(+3%)	4.75

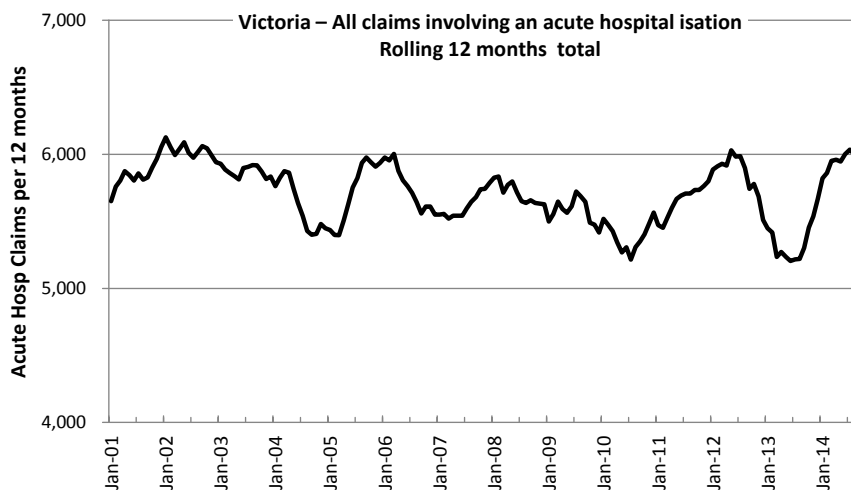
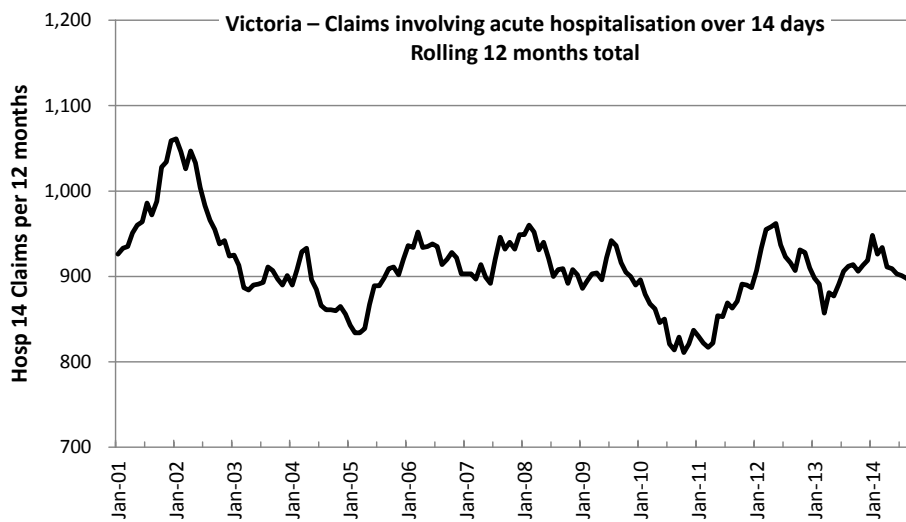


Victoria – Fatalities, rolling 12 months total

**Claims involving an acute hospital admission\***

(by claim acceptance date – rolling 12 month, to midnight 31 October 2014)

Category	2015	2014	2013	2015 v 2014		2014 v 2015		5 Year Av
<b>Claims involving an acute hospitalisation over 14 days (Rolling 12 Month Total)</b>								
Claims (to October)	882	906	931	-24	(-3%)	-49	(-5%)	884
per 100,000 pop	15.1	15.8	16.7	-0.7	(-4%)	-1.6	(-10%)	15.9
per 10,000 veh	2.0	2.1	2.2	-0.1	(-5%)	-0.2	(-9%)	2.1
<b>All claims involving an acute hospitalisation (Rolling 12 Month Total)</b>								
Claims (to October)	5,948	5,454	5,780	+494	(+9%)	+168	(+3%)	5,664
per 100,000 pop	102.1	95.4	103.4	+6.7	(+7%)	-1.3	(-1%)	100.7
per 10,000 veh	13.2	12.4	13.4	+0.8	(+6%)	-0.2	(-1%)	13.2



\*An acute hospital admission refers to a hospital admission that occurred within 7 days of accident.

## Fatalities: 12 months to April 2015

Category	2015	2014	2013	2015 v 2014		2015 v 2013		5 Year Av
<b>Overview</b>								
Fatalities	255	247	269	+8	(+3%)	-14	(-5%)	269
Accidents	232	222	247	+10	(+5%)	-15	(-6%)	255
<b>Sex</b>								
Female	64	79	84	-15	(-19%)	-20	(-24%)	77
Male	191	168	185	+23	(+14%)	+6	(+3%)	193
<b>Roaduser</b>								
Bicyclist	8	8	5		(0%)	+3	(+60%)	7
Driver	118	116	144	+2	(+2%)	-26	(-18%)	127
Motorcyclist	32	35	40	-3	(-9%)	-8	(-20%)	40
Passenger	48	50	49	-2	(-4%)	-1	(-2%)	54
Pedestrian	49	38	31	+11	(+29%)	+18	(+58%)	41
<b>Location</b>								
Melbourne	116	111	110	+5	(+5%)	+6	(+5%)	119
Rural Victoria	139	136	159	+3	(+2%)	-20	(-13%)	150
<b>Agegroup</b>								
0-4	4	1	3	+3	NA	+1	(+33%)	4
5-15	6	9	8	-3	(-33%)	-2	(-25%)	8
16-17	8	3	2	+5	(+167%)	+6	(+300%)	6
18-20	13	16	26	-3	(-19%)	-13	(-50%)	24
21-25	34	21	32	+13	(+62%)	+2	(+6%)	32
26-29	24	17	15	+7	(+41%)	+9	(+60%)	20
30-39	32	34	40	-2	(-6%)	-8	(-20%)	35
40-49	31	31	29	0	(0%)	+2	(+7%)	32
50-59	27	29	38	-2	(-7%)	-11	(-29%)	32
60-69	33	26	34	+7	(+27%)	-1	(-3%)	30
70+	43	59	41	-16	(-27%)	+2	(+5%)	47
<b>Altime</b>								
High (Melb)	63	56	57	+7	(+13%)	+6	(+11%)	63
High (Rural)	60	48	74	+12	(+25%)	-14	(-19%)	70
High (Vic)	123	104	131	+19	(+18%)	-8	(-6%)	132
Low (Melb)	53	55	53	-2	(-4%)	0	(0%)	57
Low (Rural)	79	88	85	-9	(-10%)	-6	(-7%)	80
Low (Vic)	132	143	138	-11	(-8%)	-6	(-4%)	137
<b>Accident Type</b>								
<b>Intersection</b>								
Adjacent direction	24	41	29	-17	(-41%)	-5	(-17%)	31
Opposing direction	10	4	3	+6	(+150%)	+7	(+233%)	6
<b>Mid-block/other</b>								
Head on	29	46	42	-17	(-37%)	-13	(-31%)	39
Same direction	11	12	15	-1	(-8%)	-4	(-27%)	14
Manoeuvre/o'taking	14	9	16	+5	(+56%)	-2	(-13%)	14
On path	8	3	7	+5	(+167%)	+1	(+14%)	6
Single vehicle	106	86	119	+20	(+23%)	-13	(-11%)	112
Other (incl peds)	53	46	38	+7	(+15%)	+15	(+39%)	48

## Fatalities: 12 months to April 2015 – Continued

Category	2015	2014	2013	2015 v 2014		2015 v 2013		5 Year Av
<b>Police Service Area (based on Local Government Area (see p.13))</b>								
BALLARAT	5	7	4	-2	(-29%)	+1	(+25%)	6
BANYULE	2	3	1	-1	(-33%)	+1	(+100%)	2
BASS COAST	6	9	3	-3	(-33%)	+3	(+100%)	7
BAW BAW	4	5	7	-1	(-20%)	-3	(-43%)	7
BENALLA	11	10	10	+1	(+10%)	+1	(+10%)	10
BENDIGO	7	1	14	+6	(+600%)	-7	(-50%)	7
BOROONDARA	2	6	2	-4	(-67%)	0	(0%)	3
BRIMBANK	5	5	8	0	(0%)	-3	(-38%)	6
CAMPASPE	4	5	9	-1	(-20%)	-5	(-56%)	5
CARDINIA	5	6	1	-1	(-17%)	+4	(+400%)	7
CASEY	4	6	6	-2	(-33%)	-2	(-33%)	6
CENTRAL GOLDFIELDS	0	5	2	-5	(-100%)	-2	(-100%)	3
DAREBIN	0	3	4	-3	(-100%)	-4	(-100%)	3
EAST GIPPSLAND	6	3	5	+3	(+100%)	+1	(+20%)	6
FRANKSTON	5	1	1	+4	(+400%)	+4	(+400%)	3
GEELONG	6	4	14	+2	(+50%)	-8	(-57%)	10
GLEN EIRA	5	5	6	0	(0%)	-1	(-17%)	5
GREATER DANDENONG	5	2	5	+3	(+150%)	0	(0%)	4
HOBSONS BAY	0	3	0	-3	(-100%)	0	(0%)	1
HORSHAM	2	2	4	0	(0%)	-2	(-50%)	4
HUME	5	2	14	+3	(+150%)	-9	(-64%)	6
KINGSTON	4	7	7	-3	(-43%)	-3	(-43%)	5
KNOX	5	5	1	0	(0%)	+4	(+400%)	3
LA TROBE	5	3	8	+2	(+67%)	-3	(-38%)	5
MACEDON RANGES	8	6	6	+2	(+33%)	+2	(+33%)	6
MANNINGHAM	2	0	3	+2	(+100%)	-1	(-33%)	2
MARIBYRNONG	1	2	5	-1	(-50%)	-4	(-80%)	2
MAROONDAH	2	0	2	+2	(+100%)	0	(0%)	2
MELBOURNE	8	3	1	+5	(+167%)	+7	(+700%)	5
MELTON	7	8	3	-1	(-13%)	+4	(+133%)	7
MILDURA	3	6	2	-3	(-50%)	+1	(+50%)	3
MITCHELL	7	6	12	+1	(+17%)	-5	(-42%)	8
MONASH	2	4	4	-2	(-50%)	-2	(-50%)	4
MOONEE VALLEY	4	4	1	0	(0%)	+3	(+300%)	2
MOORABOOL	7	8	9	-1	(-13%)	-2	(-22%)	9
MORELAND	7	3	2	+4	(+133%)	+5	(+250%)	4
MORNINGTON PENINSULA	12	5	5	+7	(+140%)	+7	(+140%)	7
NILLUMBIK	3	0	1	+3	(+300%)	+2	(+200%)	2
NORTHERN GRAMPPIANS	2	9	4	-7	(-78%)	-2	(-50%)	4
PORT PHILLIP	0	5	0	-5	(-100%)	0	(0%)	2
SHEPPARTON	4	3	11	+1	(+33%)	-7	(-64%)	6
SOUTHERN GRAMPPIANS	9	1	5	+8	(+800%)	+4	(+80%)	5
STONNINGTON	4	3	2	+1	(+33%)	+2	(+100%)	2
SURF COAST	7	4	4	+3	(+75%)	+3	(+75%)	7
SWAN HILL	4	9	4	-5	(-56%)	0	(0%)	6
WANGARATTA	7	8	10	-1	(-13%)	-3	(-30%)	10
WARRNAMBOOL	13	11	4	+2	(+18%)	+9	(+225%)	8
WELLINGTON	3	6	4	-3	(-50%)	-1	(-25%)	5
WHITEHORSE	4	3	2	+1	(+33%)	+2	(+100%)	4
WHITTLESEA	3	5	5	-2	(-40%)	-2	(-40%)	5
WODONGA	8	5	3	+3	(+60%)	+5	(+167%)	4
WYNDHAM	6	2	12	+4	(+200%)	-6	(-50%)	6
YARRA	1	0	2	+1	(+100%)	-1	(-50%)	2
YARRA RANGES	4	10	5	-6	(-60%)	-1	(-20%)	7

## Claims involving acute hospitalisation over 14 days: 12 months to October 2014 (claim acceptance date)

Category	2014	2013	2012	2014 v 2013	2014 v 2012	5 Year Av
<b>Overview</b>						
Claims	882	906	931	-24 (-3%)	-49 (-5%)	884
<b>Sex</b>						
Female	347	388	406	-41 (-11%)	-59 (-15%)	358
Male	535	518	524	+17 (+3%)	+11 (+2%)	526
<b>Roaduser</b>						
Driver	351	387	368	-36 (-9%)	-17 (-5%)	351
Passenger	135	144	153	-9 (-6%)	-18 (-12%)	140
Motorcyclist	167	127	166	+40 (+31%)	+1 (+1%)	162
Pedestrian	173	200	187	-27 (-14%)	-14 (-7%)	179
Cyclist	33	27	37	+6 (+22%)	-4 (-11%)	35
Train/Tram	9	4	9	+5 (+125%)	0 (0%)	7
<b>Location*</b>						
Melbourne	324	571	605	-247 (-43%)	-281 (-46%)	516
Rural Victoria	181	304	320	-123 (-40%)	-139 (-43%)	282
<b>Agegroup</b>						
0-4	2	2	1	0 (0%)	+1 (+100%)	3
5-15	13	9	13	+4 (+44%)	0 (0%)	14
16-17	11	16	24	-5 (-31%)	-13 (-54%)	17
18-20	54	65	57	-11 (-17%)	-3 (-5%)	57
21-25	83	77	83	+6 (+8%)	0 (0%)	81
26-29	50	33	53	+17 (+52%)	-3 (-6%)	50
30-39	110	107	116	+3 (+3%)	-6 (-5%)	110
40-49	104	118	135	-14 (-12%)	-31 (-23%)	117
50-59	108	96	102	+12 (+13%)	+6 (+6%)	100
60-69	99	112	114	-13 (-12%)	-15 (-13%)	102
70+	248	271	233	-23 (-8%)	+15 (+6%)	232
<b>Alctime*</b>						
High (Melb)	129	263	265	-134 (-51%)	-136 (-51%)	222
High (Rural)	72	110	125	-38 (-35%)	-53 (-42%)	112
High (Vic)	201	373	390	-172 (-46%)	-189 (-48%)	334
Low (Melb)	195	308	340	-113 (-37%)	-145 (-43%)	294
Low (Rural)	109	194	195	-85 (-44%)	-86 (-44%)	170
Low (Vic)	304	502	535	-198 (-39%)	-231 (-43%)	464
<b>Accident Type</b>						
<b>Intersection</b>						
Adjacent direction	97	132	123	-35 (-27%)	-26 (-21%)	116
Opposing direction	63	65	59	-2 (-3%)	+4 (+7%)	61
<b>Mid-block/other</b>						
Head on	88	76	76	+12 (+16%)	+12 (+16%)	80
Same direction	71	68	92	+3 (+4%)	-21 (-23%)	85
Manoeuvre/o'taking	54	63	59	-9 (-14%)	-5 (-8%)	56
On path	27	21	19	+6 (+29%)	+8 (+42%)	24
Single vehicle	267	232	262	+35 (+15%)	+5 (+2%)	245
Other (incl peds)	215	249	241	-34 (-14%)	-26 (-11%)	218

Note: Excludes rejected claims and claims for interstate crashes.

\* Due to changes in claim process procedures, locality data are missing for a significant number of claims lodged after October 2013.



Claims involving acute hospitalisation over 14 days: 12 months to October 2014 (claim acceptance date) –  
Continued

Category	2014	2013	2012	2014 v 2013		2014 v 2012		5 Year Av
<b>Police Service Area* (based on Local Government Area (see p.13))</b>								
BALLARAT	5	17	10	-12	(-71%)	-5	(-50%)	12
BANYULE	4	9	9	-5	(-56%)	-5	(-56%)	9
BASS COAST	16	16	13	0	(0%)	+3	(+23%)	16
BAW BAW	4	7	16	-3	(-43%)	-12	(-75%)	9
BENALLA	11	15	19	-4	(-27%)	-8	(-42%)	19
BENDIGO	7	18	13	-11	(-61%)	-6	(-46%)	16
BOROONDARA	15	17	27	-2	(-12%)	-12	(-44%)	21
BRIMBANK	11	19	31	-8	(-42%)	-20	(-65%)	19
CAMPASPE	3	7	6	-4	(-57%)	-3	(-50%)	5
CARDINIA	7	12	16	-5	(-42%)	-9	(-56%)	14
CASEY	10	32	19	-22	(-69%)	-9	(-47%)	24
CENTRAL GOLDFIELDS	2	6	7	-4	(-67%)	-5	(-71%)	5
DAREBIN	8	16	20	-8	(-50%)	-12	(-60%)	15
EAST GIPPSLAND	7	7	18	0	(0%)	-11	(-61%)	12
FRANKSTON	6	15	11	-9	(-60%)	-5	(-45%)	14
GEELONG	18	34	33	-16	(-47%)	-15	(-45%)	27
GLEN EIRA	14	33	27	-19	(-58%)	-13	(-48%)	28
GREATER DANDENONG	21	29	24	-8	(-28%)	-3	(-13%)	26
HOBSONS BAY	4	9	14	-5	(-56%)	-10	(-71%)	9
HORSHAM	2	5	11	-3	(-60%)	-9	(-82%)	7
HUME	7	30	31	-23	(-77%)	-24	(-77%)	23
KINGSTON	14	26	15	-12	(-46%)	-1	(-7%)	18
KNOX	8	20	21	-12	(-60%)	-13	(-62%)	15
LA TROBE	7	13	12	-6	(-46%)	-5	(-42%)	14
MACEDON RANGES	14	18	14	-4	(-22%)	0	(0%)	16
MANNINGHAM	8	12	24	-4	(-33%)	-16	(-67%)	13
MARIBYRNONG	3	12	16	-9	(-75%)	-13	(-81%)	12
MAROONDAH	3	7	7	-4	(-57%)	-4	(-57%)	8
MELBOURNE	19	30	28	-11	(-37%)	-9	(-32%)	27
MELTON	8	11	19	-3	(-27%)	-11	(-58%)	12
MILDURA	5	5	12	0	(0%)	-7	(-58%)	7
MITCHELL	15	17	25	-2	(-12%)	-10	(-40%)	18
MONASH	17	19	21	-2	(-11%)	-4	(-19%)	21
MOONEE VALLEY	16	15	21	+1	(+7%)	-5	(-24%)	16
MOORABOOL	12	17	8	-5	(-29%)	+4	(+50%)	12
MORELAND	16	37	22	-21	(-57%)	-6	(-27%)	23
MORNINGTON PENINSULA	14	27	38	-13	(-48%)	-24	(-63%)	27
NILLUMBIK	4	5	9	-1	(-20%)	-5	(-56%)	5
NORTHERN GRAMPPIANS	6	13	6	-7	(-54%)	0	(0%)	7
PORT PHILLIP	12	11	14	+1	(+9%)	-2	(-14%)	11
SHEPPARTON	5	12	14	-7	(-58%)	-9	(-64%)	10
SOUTHERN GRAMPPIANS	6	8	8	-2	(-25%)	-2	(-25%)	9
STONNINGTON	10	13	17	-3	(-23%)	-7	(-41%)	15
SURF COAST	4	12	8	-8	(-67%)	-4	(-50%)	10
SWAN HILL	4	6	9	-2	(-33%)	-5	(-56%)	7
WANGARATTA	6	19	17	-13	(-68%)	-11	(-65%)	15
WARRNAMBOOL	5	14	17	-9	(-64%)	-12	(-71%)	12
WELLINGTON	9	7	9	+2	(+29%)	0	(0%)	9
WHITEHORSE	10	14	21	-4	(-29%)	-11	(-52%)	18
WHITTLESEA	8	23	30	-15	(-65%)	-22	(-73%)	18
WODONGA	8	11	15	-3	(-27%)	-7	(-47%)	10
WYNDHAM	19	20	22	-1	(-5%)	-3	(-14%)	18
YARRA	10	14	9	-4	(-29%)	+1	(+11%)	12
YARRA RANGES	18	34	22	-16	(-47%)	-4	(-18%)	27

Note: excludes rejected claims and claims for interstate crashes

\* Due to changes in claim process procedures, locality data are missing for a significant number of claims lodged after October 2013.

## Claims involving an acute hospital admission: 12 months to October 2014 (claim acceptance date)

Category	2014	2013	2012	2014 v 2013	2014 v 2012	2014 v 2012	5 Year Av	
<b>Overview</b>								
Claims	5,948	5,454	5,780	+494	(+9%)	+168	(+3%)	5,664
<b>Sex</b>								
Female	2,493	2,233	2,506	+260	(+12%)	-13	(-1%)	2,389
Male	3,448	3,220	3,273	+228	(+7%)	+175	(+5%)	3,272
<b>Roaduser</b>								
Driver	2,655	2,491	2,764	+164	(+7%)	-109	(-4%)	2,584
Passenger	1,035	900	1,003	+135	(+15%)	+32	(+3%)	1,010
Motorcyclist	1,149	912	867	+237	(+26%)	+282	(+33%)	975
Pedestrian	604	646	654	-42	(-7%)	-50	(-8%)	633
Cyclist	370	386	358	-16	(-4%)	+12	(+3%)	357
Train/Tram	32	29	27	+3	(+10%)	+5	(+19%)	26
<b>Location*</b>								
Melbourne	1,947	3,535	3,821	-1588	(-45%)	-1874	(-49%)	3,355
Rural Victoria	863	1,664	1,887	-801	(-48%)	-1024	(-54%)	1,600
<b>Agegroup</b>								
0-4	44	53	51	-9	(-17%)	-7	(-14%)	48
5-15	166	174	188	-8	(-5%)	-22	(-12%)	191
16-17	99	94	126	+5	(+5%)	-27	(-21%)	114
18-20	508	473	523	+35	(+7%)	-15	(-3%)	519
21-25	784	661	724	+123	(+19%)	+60	(+8%)	710
26-29	481	390	450	+91	(+23%)	+31	(+7%)	433
30-39	893	793	905	+100	(+13%)	-12	(-1%)	872
40-49	904	840	859	+64	(+8%)	+45	(+5%)	849
50-59	749	671	727	+78	(+12%)	+22	(+3%)	706
60-69	533	506	510	+27	(+5%)	+23	(+5%)	499
70+	787	799	717	-12	(-2%)	+70	(+10%)	722
<b>Alctime*</b>								
High (Melb)	863	1,540	1,735	-677	(-44%)	-872	(-50%)	1,504
High (Rural)	355	656	796	-301	(-46%)	-441	(-55%)	677
High (Vic)	1,218	2,196	2,531	-978	(-45%)	-1313	(-52%)	2,181
Low (Melb)	1,084	1,995	2,086	-911	(-46%)	-1002	(-48%)	1,851
Low (Rural)	508	1,008	1,091	-500	(-50%)	-583	(-53%)	923
Low (Vic)	1,592	3,003	3,177	-1411	(-47%)	-1585	(-50%)	2,774
<b>Accident Type</b>								
<b>Intersection</b>								
Adjacent direction	773	822	831	-49	(-6%)	-58	(-7%)	826
Opposing direction	515	489	489	+26	(+5%)	+26	(+5%)	479
<b>Mid-block/other</b>								
Head on	338	281	318	+57	(+20%)	+20	(+6%)	322
Same direction	849	790	906	+59	(+7%)	-57	(-6%)	870
Manoeuvre/o'taking	310	322	312	-12	(-4%)	-2	(-1%)	321
On path	279	237	236	+42	(+18%)	+43	(+18%)	231
Single vehicle	1,704	1,446	1,594	+258	(+18%)	+110	(+7%)	1,583
Other (incl peds)	1,180	1,067	1,094	+113	(+11%)	+86	(+8%)	1,031

Note: excludes rejected claims and claims for interstate crashes

\* Due to changes in claim process procedures, locality data are missing for a significant number of claims lodged after October 2013.

Claims involving an acute hospital admission: 12 months to October 2014 (claim acceptance date) –  
Continued

Category	2014	2013	2012	2014 v 2013		2014 v 2012		5 Year Av
<b>Police Service Area* (based on Local Government Area (see p.13))</b>								
BALLARAT	26	101	97	-75	(-74%)	-71	(-73%)	82
BANYULE	32	51	67	-19	(-37%)	-35	(-52%)	53
BASS COAST	45	78	74	-33	(-42%)	-29	(-39%)	73
BAW BAW	28	51	75	-23	(-45%)	-47	(-63%)	51
BENALLA	53	100	112	-47	(-47%)	-59	(-53%)	109
BENDIGO	46	84	127	-38	(-45%)	-81	(-64%)	88
BOROONDARA	69	143	126	-74	(-52%)	-57	(-45%)	123
BRIMBANK	59	127	182	-68	(-54%)	-123	(-68%)	123
CAMPASPE	15	35	46	-20	(-57%)	-31	(-67%)	33
CARDINIA	59	80	85	-21	(-26%)	-26	(-31%)	82
CASEY	108	207	226	-99	(-48%)	-118	(-52%)	203
CENTRAL GOLDFIELDS	14	23	27	-9	(-39%)	-13	(-48%)	22
DAREBIN	37	89	104	-52	(-58%)	-67	(-64%)	89
EAST GIPPSLAND	24	60	85	-36	(-60%)	-61	(-72%)	57
FRANKSTON	48	108	133	-60	(-56%)	-85	(-64%)	116
GEELONG	134	204	229	-70	(-34%)	-95	(-41%)	207
GLEN EIRA	115	177	174	-62	(-35%)	-59	(-34%)	161
GREATER DANDENONG	133	211	187	-78	(-37%)	-54	(-29%)	185
HOBSONS BAY	16	49	79	-33	(-67%)	-63	(-80%)	52
HORSHAM	14	29	39	-15	(-52%)	-25	(-64%)	31
HUME	68	141	143	-73	(-52%)	-75	(-52%)	129
KINGSTON	79	126	133	-47	(-37%)	-54	(-41%)	118
KNOX	50	84	111	-34	(-40%)	-61	(-55%)	98
LA TROBE	27	73	57	-46	(-63%)	-30	(-53%)	60
MACEDON RANGES	57	99	73	-42	(-42%)	-16	(-22%)	79
MANNINGHAM	28	72	76	-44	(-61%)	-48	(-63%)	61
MARIBYRNONG	30	79	77	-49	(-62%)	-47	(-61%)	69
MAROONDAH	22	54	55	-32	(-59%)	-33	(-60%)	56
MELBOURNE	118	246	248	-128	(-52%)	-130	(-52%)	208
MELTON	38	72	72	-34	(-47%)	-34	(-47%)	66
MILDURA	22	32	44	-10	(-31%)	-22	(-50%)	32
MITCHELL	51	83	99	-32	(-39%)	-48	(-48%)	79
MONASH	95	169	183	-74	(-44%)	-88	(-48%)	153
MOONEE VALLEY	55	101	122	-46	(-46%)	-67	(-55%)	92
MOORABOOL	64	118	92	-54	(-46%)	-28	(-30%)	88
MORELAND	71	150	126	-79	(-53%)	-55	(-44%)	126
MORNINGTON PENINSULA	75	117	167	-42	(-36%)	-92	(-55%)	137
NILLUMBIK	13	36	40	-23	(-64%)	-27	(-68%)	34
NORTHERN GRAMPPIANS	14	39	35	-25	(-64%)	-21	(-60%)	31
PORT PHILLIP	88	103	112	-15	(-15%)	-24	(-21%)	103
SHEPPARTON	28	53	73	-25	(-47%)	-45	(-62%)	55
SOUTHERN GRAMPPIANS	23	43	48	-20	(-47%)	-25	(-52%)	41
STONNINGTON	89	120	112	-31	(-26%)	-23	(-21%)	113
SURF COAST	26	54	55	-28	(-52%)	-29	(-53%)	58
SWAN HILL	23	30	39	-7	(-23%)	-16	(-41%)	32
WANGARATTA	44	94	106	-50	(-53%)	-62	(-58%)	89
WARRNAMBOOL	24	64	94	-40	(-63%)	-70	(-74%)	79
WELLINGTON	44	52	72	-8	(-15%)	-28	(-39%)	65
WHITEHORSE	53	107	121	-54	(-50%)	-68	(-56%)	106
WHITTLESEA	58	139	160	-81	(-58%)	-102	(-64%)	118
WODONGA	17	65	89	-48	(-74%)	-72	(-81%)	58
WYNDHAM	96	121	141	-25	(-21%)	-45	(-32%)	123
YARRA	59	98	95	-39	(-40%)	-36	(-38%)	96
YARRA RANGES	86	158	164	-72	(-46%)	-78	(-48%)	161

Note: excludes rejected claims and claims for interstate crashes

\* Due to changes in claim process procedures, locality data are missing for a significant number of claims lodged after October 2013.

**Fatalities: Victorian monthly totals since 1951**

<b>Year</b>	<b>Jan</b>	<b>Feb</b>	<b>Mar</b>	<b>Apr</b>	<b>May</b>	<b>Jun</b>	<b>Jul</b>	<b>Aug</b>	<b>Sep</b>	<b>Oct</b>	<b>Nov</b>	<b>Dec</b>	<b>Totals</b>
1951							61	59	52	38	29	41	
1952	45	40	54	61	54	69	67	55	44	44	31	20	584
1953	23	28	54	58	49	42	50	37	44	27	36	32	480
1954	44	42	28	60	55	36	63	33	25	52	30	41	509
1955	44	36	45	55	48	56	64	44	44	32	40	40	548
1956	34	48	51	67	53	65	71	47	39	39	44	48	606
1957	50	41	46	58	52	54	57	53	51	46	32	49	589
1958	50	38	42	58	54	41	54	53	57	40	57	52	596
1959	50	57	61	50	75	55	42	48	52	55	63	63	671
1960	49	53	57	76	70	70	67	62	61	77	52	66	760
1961	63	57	68	74	58	68	78	82	59	62	60	65	794
1962	65	41	76	78	72	80	70	77	62	53	64	70	808
1963	67	56	65	85	66	68	77	55	55	58	61	67	780
1964	73	71	78	71	83	89	80	89	67	66	62	75	904
1965	63	64	86	88	80	87	79	69	81	77	68	87	929
1966	75	59	75	103	74	86	87	80	75	66	90	85	955
1967	61	79	91	97	81	71	59	67	70	68	60	83	887
1968	70	78	86	78	73	76	73	77	72	80	81	105	949
1969	79	68	79	87	86	77	87	83	87	83	94	101	1,011
1970	85	84	106	80	87	88	110	106	78	95	68	74	1,061
1971	83	75	77	68	76	86	85	72	78	73	74	76	923
1972	61	62	75	82	75	71	98	85	83	62	80	81	915
1973	75	75	95	85	64	66	61	85	89	88	66	86	935
1974	56	62	81	60	70	73	67	62	53	70	80	72	806
1975	67	65	87	73	97	94	57	75	69	66	71	89	910
1976	79	78	88	78	69	79	60	70	82	78	77	100	938
1977	65	71	89	79	65	79	70	91	68	74	96	107	954
1978	75	54	95	63	64	69	68	77	65	84	83	72	869
1979	63	60	86	75	45	64	66	75	69	79	72	93	847
1980	48	55	66	59	47	56	60	53	45	58	61	49	657
1981	69	60	58	61	74	65	61	63	68	71	59	57	766
1982	55	53	59	59	67	45	47	71	53	69	65	66	709
1983	42	59	53	63	62	61	65	51	59	43	54	52	664
1984	65	48	58	50	56	48	46	50	71	53	55	58	658
1985	56	47	50	65	75	50	51	50	58	61	56	64	683
1986	56	50	70	69	59	53	42	54	54	52	59	51	669
1987	62	43	57	52	63	59	62	49	62	61	55	80	705
1988	49	58	69	54	79	50	54	52	64	59	43	70	701
1989	76	65	80	59	67	73	52	65	82	50	41	66	776
1990	48	44	55	39	56	64	41	34	48	35	40	44	548
1991	45	39	70	30	34	29	44	47	41	36	35	53	503
1992	34	33	34	47	33	29	23	27	28	38	30	40	396
1993	27	40	37	39	44	33	33	27	34	39	43	40	436
1994	36	31	44	35	27	33	29	37	17	27	32	30	378
1995	38	35	26	33	34	41	27	34	34	32	38	46	418
1996	40	47	35	38	28	29	30	35	49	24	33	30	418
1997	36	25	30	30	40	22	39	26	26	29	39	35	377
1998	29	29	32	36	31	22	40	19	37	36	49	30	390
1999	32	31	35	35	34	24	35	26	28	38	29	37	384
2000	32	26	46	32	39	32	33	29	36	29	44	29	407
2001	44	30	31	32	31	41	34	37	35	51	41	37	444
2002	32	31	45	31	45	32	27	25	31	30	31	37	397
2003	21	41	36	28	31	28	20	23	23	24	24	31	330
2004	32	22	30	30	46	28	27	26	22	28	25	27	343
2005	33	27	47	21	29	23	30	25	25	33	17	36	346
2006	24	37	23	23	27	23	25	22	43	20	31	39	337
2007	23	23	32	25	26	28	28	20	23	37	26	41	332
2008	28	20	37	25	25	20	27	27	18	25	26	25	303
2009	31	18	23	32	19	30	19	21	14	28	21	34	290
2010	26	25	23	20	31	26	26	18	17	36	12	28	288
2011	18	20	34	31	30	24	25	14	12	22	30	27	287
2012	30	20	25	19	23	22	17	25	17	34	26	24	282
2013	14	24	24	19	18	13	24	20	19	15	23	30	243
2014	25	21	25	14	23	17	22	21	20	19	28	14	249
2015	25	22	23	21									
<b>Ave</b>	<b>48</b>	<b>46</b>	<b>55</b>	<b>53</b>	<b>53</b>	<b>51</b>	<b>51</b>	<b>50</b>	<b>49</b>	<b>50</b>	<b>49</b>	<b>55</b>	<b>613</b>
<b>Max</b>	<b>85</b>	<b>84</b>	<b>106</b>	<b>103</b>	<b>97</b>	<b>94</b>	<b>110</b>	<b>106</b>	<b>89</b>	<b>95</b>	<b>96</b>	<b>107</b>	<b>1,061</b>
<b>Min</b>	<b>14</b>	<b>18</b>	<b>23</b>	<b>14</b>	<b>18</b>	<b>13</b>	<b>17</b>	<b>14</b>	<b>12</b>	<b>15</b>	<b>12</b>	<b>14</b>	<b>243</b>

## Fatalities by Week (2009 to 2015)

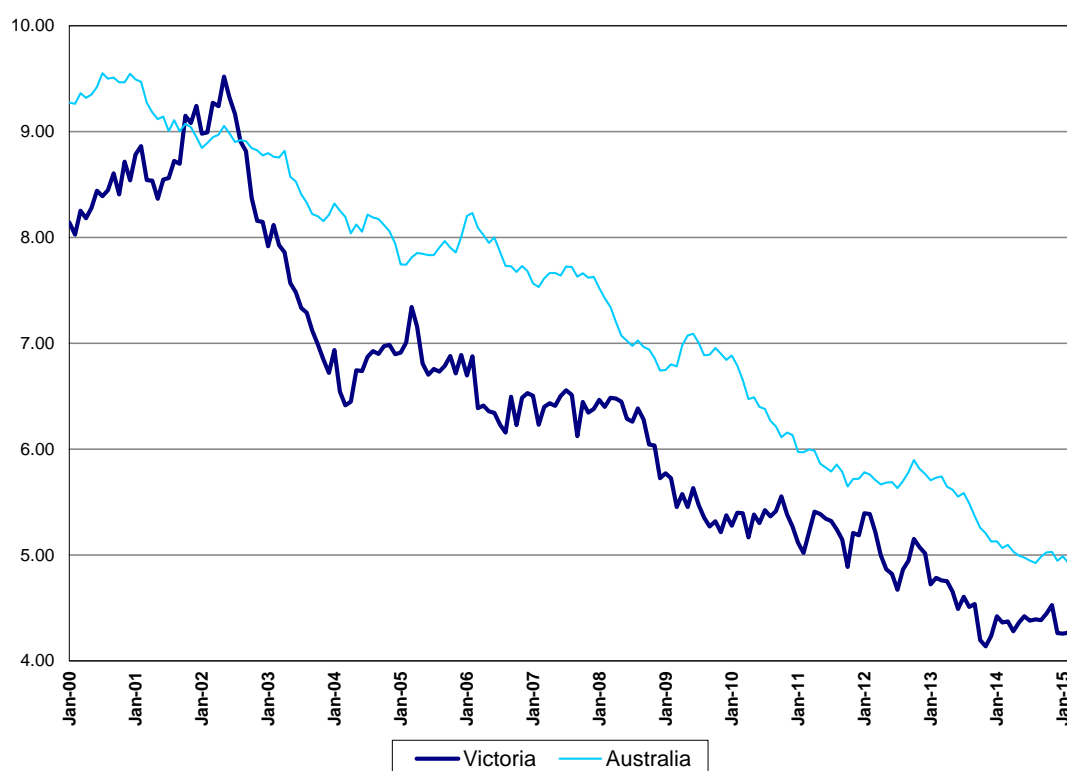
Week Ending	2009	2010	2011	2012	2013	2014	2015	Cumulative 2015	% Change 2015-2014	12 Month Moving Total
5-Jan	7	3	2	3	1	0	2	2	-	251
12-Jan	10	5	6	7	3	5	5	7	+40%	251
19-Jan	4	6	3	8	6	7	7	14	+17%	251
26-Jan	4	5	4	9	4	9	2	16	-24%	244
2-Feb	6	9	6	5	3	6	10	26	-4%	248
9-Feb	6	7	5	3	8	4	7	33	+6%	251
16-Feb	7	4	6	7	6	8	5	38	-3%	248
23-Feb	4	8	3	6	6	2	6	44	+7%	252
2-Mar	1	7	3	2	2	6	4	48	+2%	250
9-Mar	3	2	10	3	4	8	8	56	+2%	250
16-Mar	6	8	6	11	6	4	6	62	+5%	252
23-Mar	6	3	9	5	10	4	3	65	+3%	251
30-Mar	8	7	9	6	2	6	3	68	-1%	248
6-Apr	5	4	6	7	4	6	3	71	-5%	245
13-Apr	5	5	9	2	6	6	6	77	-5%	245
20-Apr	11	7	7	6	4	2	7	84	+1%	250
27-Apr	9	1	6	3	5	2	5	89	+5%	253
4-May	6	6	6	10	6	3	4	93	+6%	254
11-May	7	8	6	2	3	4				
18-May	1	4	7	4	1	3				
25-May	2	11	10	6	2	5				
1-Jun	6	5	5	2	9	9				
8-Jun	4	7	4	8	2	2				
15-Jun	9	4	6	3	3	2				
22-Jun	7	8	7	8	5	3				
29-Jun	9	7	6	3	1	8				
6-Jul	3	7	4	2	5	6				
13-Jul	6	2	8	5	7	7				
20-Jul	4	3	6	5	4	3				
27-Jul	5	8	6	5	5	4				
3-Aug	4	10	3	1	8	4				
10-Aug	7	3	5	5	1	5				
17-Aug	6	5	3	5	3	6				
24-Aug	3	5	2	6	6	4				
31-Aug	3	1	3	8	5	5				
7-Sep	2	5	1	5	5	4				
14-Sep	4	1	4	6	2	6				
21-Sep	4	4	1	3	3	4				
28-Sep	3	5	5	3	8	3				
5-Oct	2	9	4	7	3	4				
12-Oct	6	10	5	8	2	8				
19-Oct	8	5	3	9	3	0				
26-Oct	8	7	3	6	3	8				
2-Nov	5	8	8	6	6	2				
9-Nov	3	1	6	7	8	3				
16-Nov	9	2	12	6	2	8				
23-Nov	6	3	9	5	8	3				
30-Nov	4	5	2	9	4	13				
7-Dec	5	4	10	7	6	5				
14-Dec	8	8	3	4	10	3				
21-Dec	11	6	7	1	9	3				
28-Dec	6	8	6	8	4	3				
31-Dec	2	2	1	1	1	1				
<b>Total</b>	<b>290</b>	<b>288</b>	<b>287</b>	<b>282</b>	<b>243</b>	<b>249</b>				

## The National Picture

State	Fatalities (12 months to April)					2015 v 2014	
	2015	2014	2013	2012			
NSW	311	338	350	373	-27	(-8%)	
VIC	255	247	269	278	+8	(+3%)	
QLD	237	236	296	273	+1	(+0%)	
SA	106	93	93	99	+13	(+14%)	
WA	186	172	176	174	+14	(+8%)	
TAS	36	37	35	22	-1	(-3%)	
NT	38	40	47	50	-2	(-5%)	
ACT	9	7	15	1	+2	(+29%)	
AUST TOTAL	1,178	1,170	1,281	1,270	+8	(+1%)	
AUST minus VIC	923	923	1,012	992		(0%)	

State	Fatalities per 10,000 registered vehicles (12 months to April)			Fatalities per 100,000 population (12 months to April)		
	2015	2014	2013	2015	2014	2013
NSW	0.60	0.67	0.71	4.12	4.54	4.78
VIC	0.56	0.55	0.62	4.34	4.28	4.75
QLD	0.63	0.64	0.83	5.00	5.04	6.44
SA	0.79	0.70	0.72	6.27	5.55	5.60
WA	0.84	0.81	0.87	7.18	6.78	7.16
TAS	0.81	0.84	0.80	6.99	7.20	6.83
NT	2.46	2.64	3.20	15.39	16.57	19.88
ACT	0.32	0.25	0.55	2.33	1.82	3.97
AUST TOTAL	0.66	0.67	0.75	4.99	5.03	5.64
AUST minus VIC	0.69	0.71	0.80	5.15	5.27	5.91

Deaths per 100,000 population, Victoria v Australia 2000 - 2015



Victoria v Australia - 12 Month Moving Fatality Rate

## Booze-Bus Random Breath Testing

12 months to March 2015 (monthly totals)

	2014									2015		
	Apr	May	Jun	Jul	Aug	Sep	Oct	Nov	Dec	Jan	Feb	Mar
Melbourne	96,725	107,794	103200	110,427	110,124	101,857	100,252	86,261	99,008	95,430	76,758	84,559
Country	9,737	12,033	7,548	9,300	7,841	7,989	8,116	10,510	7,084	5,191	7,882	5,830
Vic Total	106,462	119,827	110,748	119,727	117,965	109,846	108,368	96,771	106,092	100,621	84,640	90,389

12 months to March 2015 vs previous 12 months

	2015	2014	2013	2015 v 2014	2015 v 2013
Melbourne	1,172,395	1,060,175	1,062,075	+112220 (+11%)	+110320 (+10%)
Country	99,061	90,264	101,223	+8797 (+10%)	-2162 (-2%)
Vic Total	1,271,456	1,150,439	1,163,298	+121017 (+11%)	+108158 (+9%)

## Mobile Safety Camera Data

Speed Infringements Issued from Mobile Cameras (monthly totals)

Monthly Average = 34,575

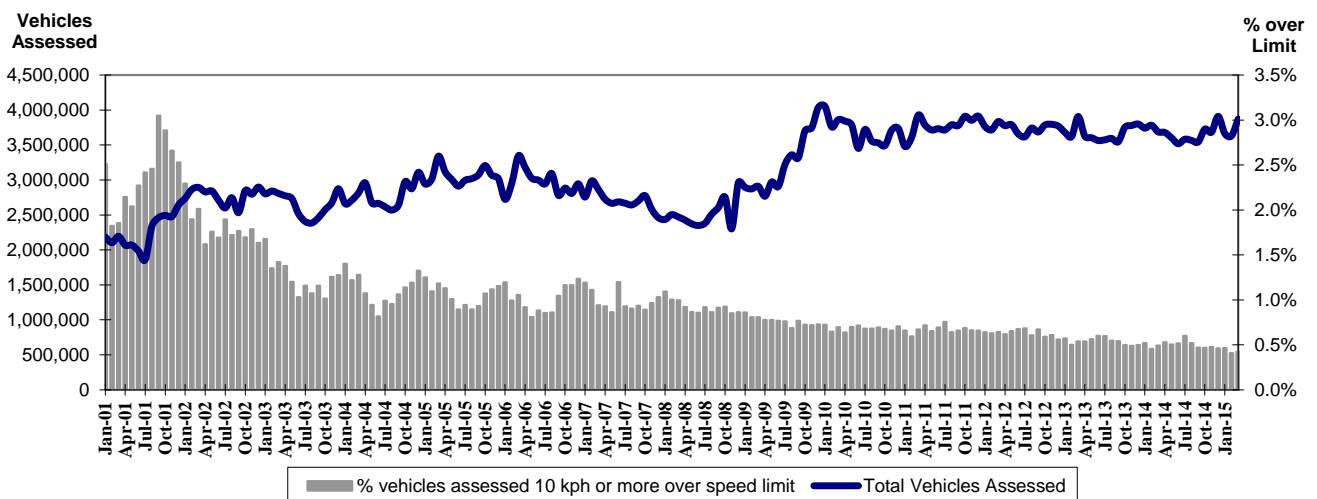
2014	2015											
	Apr	May	Jun	Jul	Aug	Sep	Oct	Nov	Dec	Jan	Feb	Mar
	29,399	44,981	34,108	42,640	34,202	32,625	35,422	32,416	28,732	37,982	31,250	31,144

Excessive Speed Infringements (ESI) Issued from Mobile Cameras (monthly totals)

Monthly Average = 308

2014	2015											
	Apr	May	Jun	Jul	Aug	Sep	Oct	Nov	Dec	Jan	Feb	Mar
	252	366	316	390	317	292	334	287	258	311	270	303

Notes: An ESI is defined as 25km/h over the speed limit except in a 110km/h zone where it is 20km/h over the limit.



Mobile Safety Cameras – Vehicles assessed and percentage of vehicles assessed 10km/h or more over speed limit per month

## Explanations and References

Hi-AlcTime is those times of the day and week (*shaded* in the table below) when casualty crashes are ten times more likely to involve alcohol than casualty crashes at other (Lo-AlcTime) times.

	12am - 6am	6am - 8am	8am - 10am	10am - 2pm	2pm - 4pm	4pm - 6pm	6pm - 12pm
Monday							
Tuesday							
Wednesday							
Thursday							
Friday							
Saturday							
Sunday							

Police Service Areas align with Local Government Areas. Most Police Service Areas are equivalent to a single Local Government Area, while the remainder comprise two or three Local Government Areas.

Police Service Area	Local Government Area(s)	Police Service Area	Local Government Area(s)
BALLARAT	BALLARAT, PYRENEES	MAROONDAH	MAROONDAH
BANYULE	BANYULE	MELBOURNE	MELBOURNE
BASS COAST	BASS COAST, SOUTH GIPPSLAND	MELTON	MELTON
BAW BAW	BAWBAW	MILDURA	MILDURA
BENALLA	BENALLA, MANSFIELD, MURRINDINDI	MITCHELL	MITCHELL, STRATHBOGIE
BENDIGO	GREATER BENDIGO	MONASH	MONASH
BOROONDARA	BOROONDARA	MOONEE VALLEY	MOONEE VALLEY
BRIMBANK	BRIMBANK	MOORABOOL	GOLDEN PLAINS, HEPBURN, MOORABOOL
CAMPASPE	CAMPASPE	MORELAND	MORELAND
CARDINIA	CARDINIA	MORNINGTON PENINSULA	MORNINGTON PENINSULA
CASEY	CASEY	NILLUMBIK	NILLUMBIK
CENTRAL GOLDFIELDS	CENTRAL GOLDFIELDS, LODDON	NORTHERN GRAMPIANS	ARARAT, NORTHERN GRAMPIANS, YARRIAMIACK
GREATER DANDENONG	GREATER DANDENONG	PORT PHILLIP	PORT PHILLIP
DAREBIN	DAREBIN	SHEPPARTON	GREATER SHEPPARTON
EAST GIPPSLAND	EAST GIPPSLAND	SOUTHERN GRAMPIANS	GLENELG, SOUTHERN GRAMPIANS
FRANKSTON	FRANKSTON	STONNINGTON	STONNINGTON
GEELONG	GREATER GEELONG, QUEENSCLIFF	SURFCOAST	SURFCOAST, COLAC OTWAY
GLENEIRA	GLENEIRA, BAYSIDE	SWANHILL	BULOKE, GANNAWARRA, SWAN HILL
HOBSONS BAY	HOBSONSBAY	WANGARATTA	ALPINE, MOIRA, WANGARATTA
HORSHAM	HINDMARSH, HORSHAM, WESTWIMMERA	WARRNAMBOOL	CORANGAMITE, MOYNE, WARRNAMBOOL
HUME	HUME	WELLINGTON	WELLINGTON
KINGSTON	KINGSTON	WHITEHORSE	WHITEHORSE
KNOX	KNOX	WHITTLESEA	WHITTLESEA
LATROBE	LATROBE	WODONGA	INDIGO, TOWONG, WODONGA
MACEDON RANGES	MOUNT ALEXANDER, MACEDON RANGES	WYNDHAM	WYNDHAM
MANNINGHAM	MANNINGHAM	YARRA	YARRA
MARIBYRNONG	MARIBYRNONG	YARRA RANGES	YARRA RANGES



## Useful Internet Sites

### TAC Sites

- TAC Safety (Road Safety) [www.tacsafety.com.au](http://www.tacsafety.com.au)
- TAC How safe is your car [www.howsafeisyourcar.com.au](http://www.howsafeisyourcar.com.au)
- TAC Learners Log [www.learnerslog.com.au](http://www.learnerslog.com.au)
- TAC Motorcycle Safety Website [www.spokes.com.au](http://www.spokes.com.au)
- TAC Corporate site [www.tac.vic.gov.au](http://www.tac.vic.gov.au)

### Victorian Sites:

- VicRoads [www.vicroads.vic.gov.au](http://www.vicroads.vic.gov.au)
- Victoria Police [www.police.vic.gov.au](http://www.police.vic.gov.au)
- Parliamentary Road Safety Committee [www.parliament.vic.gov.au/rsc/](http://www.parliament.vic.gov.au/rsc/)
- ARRB Transport Research [www.arrb.com.au](http://www.arrb.com.au)
- RACV [www.racv.com.au](http://www.racv.com.au)
- Monash University Accident Research Centre [www.monash.edu.au/muarc](http://www.monash.edu.au/muarc)
- Roadsafe [www.roadsafe.org.au](http://www.roadsafe.org.au)
- Cameras Save Lives [www.camerassavelives.vic.gov.au](http://www.camerassavelives.vic.gov.au)

### National and Interstate Sites:

- Australian Transport Safety Bureau [www.atsb.gov.au](http://www.atsb.gov.au)
- Roads and Traffic Authority (NSW) [www.rta.nsw.gov.au](http://www.rta.nsw.gov.au)
- Queensland Transport - Road Safety [transport.qld.gov.au/Home/Safety/Road](http://transport.qld.gov.au/Home/Safety/Road)
- Department of Transport (SA) [www.transport.sa.gov.au/index.htm](http://www.transport.sa.gov.au/index.htm)
- Main Roads Western Australia - Road Safety [www.mrwa.wa.gov.au](http://www.mrwa.wa.gov.au)

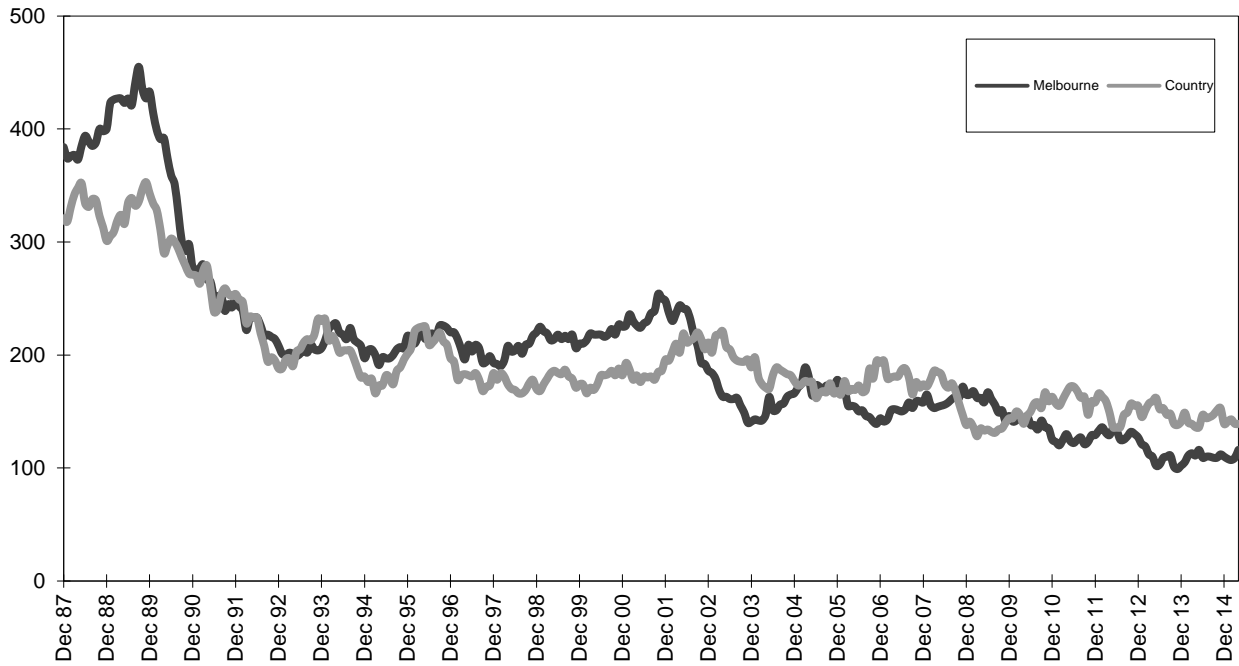
### International Sites:

- National Highway Traffic Safety Admin (USA) [www.nhtsa.dot.gov](http://www.nhtsa.dot.gov)
- Swedish Road and Transport Institute (VTI) [www.vti.se](http://www.vti.se)
- SWOV Institute for Road Safety Research [www.swov.nl](http://www.swov.nl)

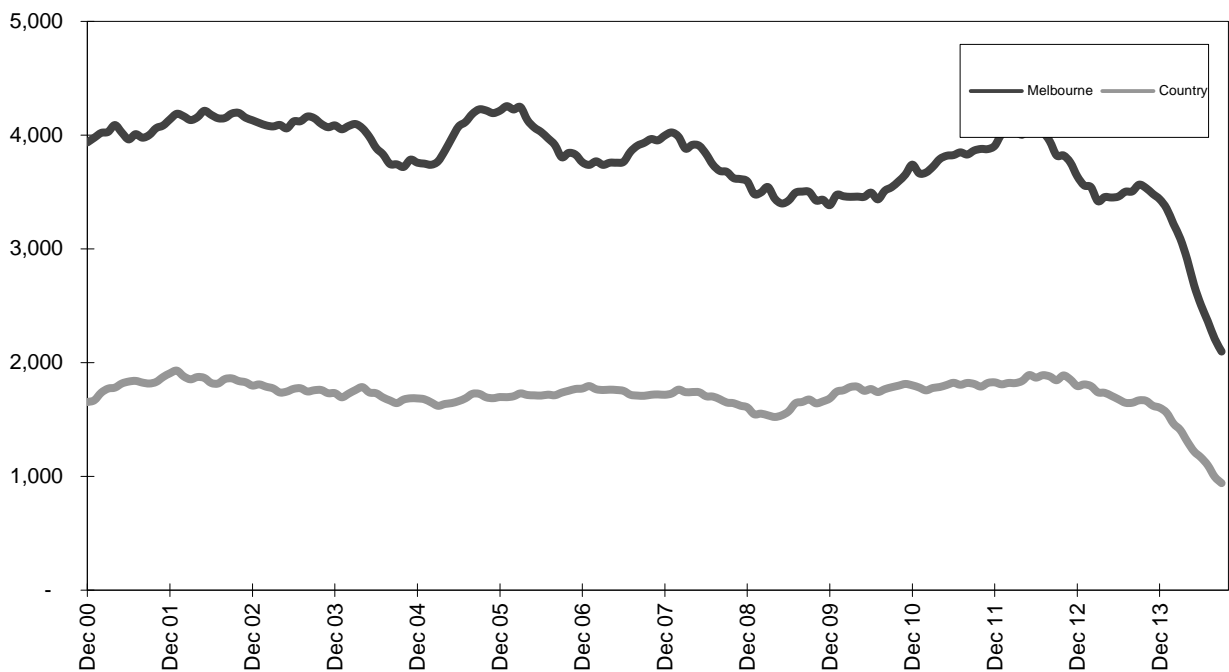
### Related Sites:

- Australian Drug Foundation [www.adf.org.au](http://www.adf.org.au)
- Amy Gillett Foundation [www.amygillett.org.au](http://www.amygillett.org.au)

Figures

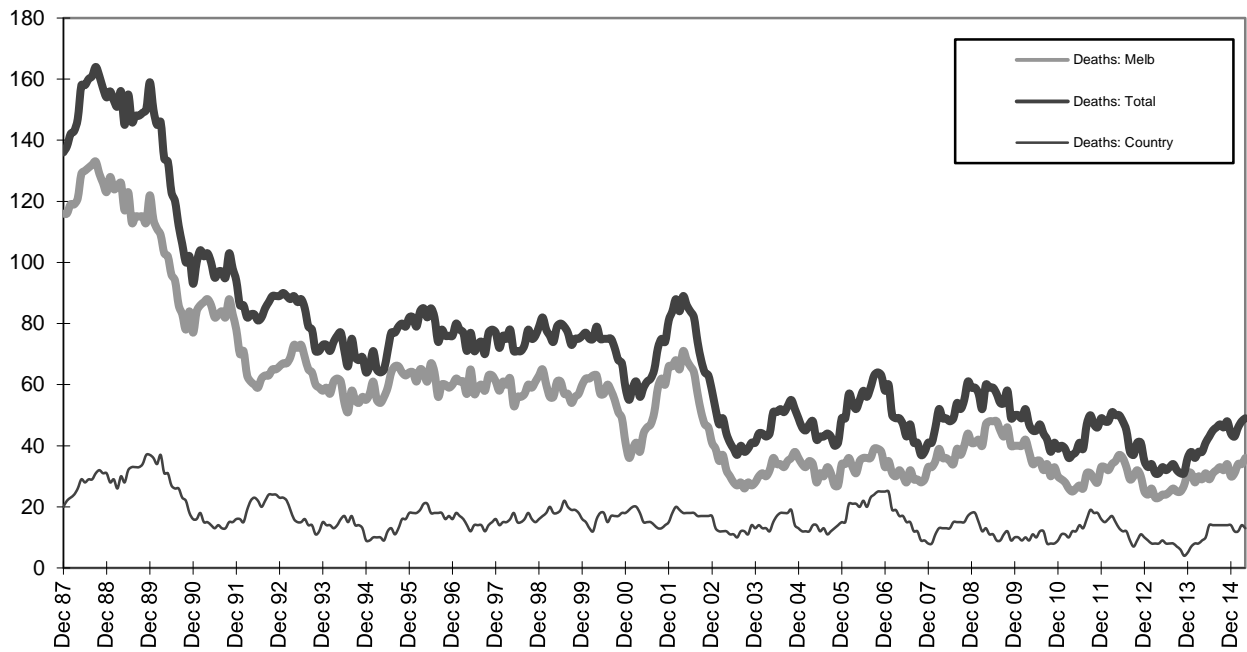


Graph 1a - Melbourne/country fatalities

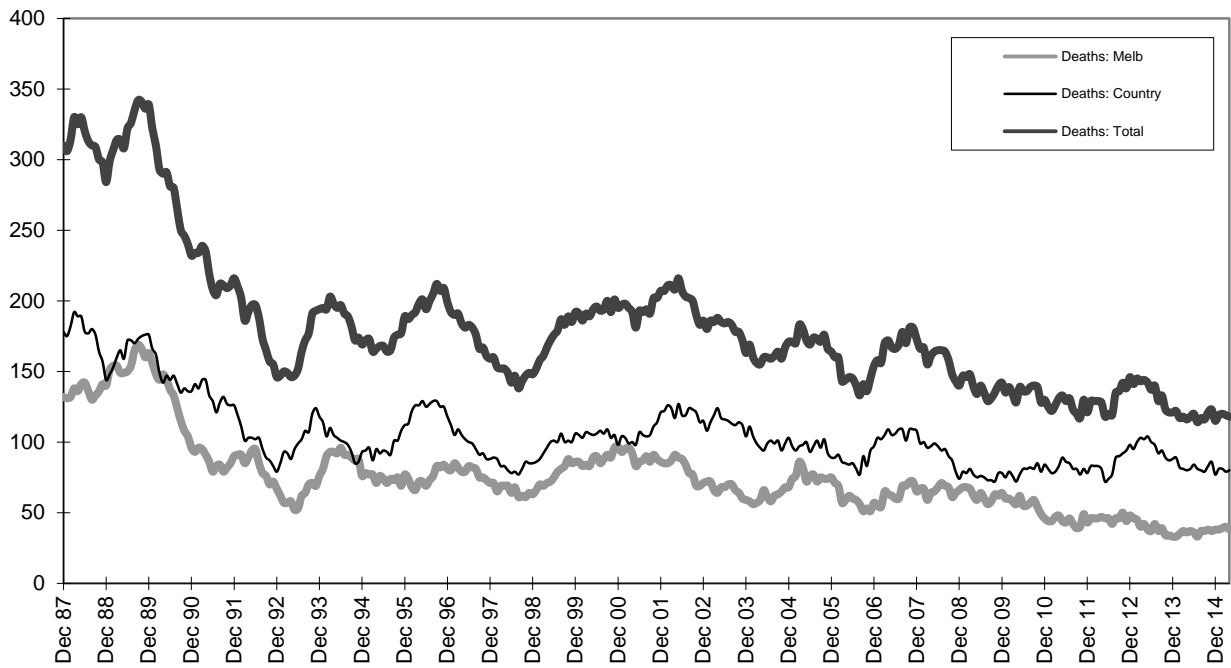


Graph 1b - Melbourne/country Claims involving an acute hospital admission

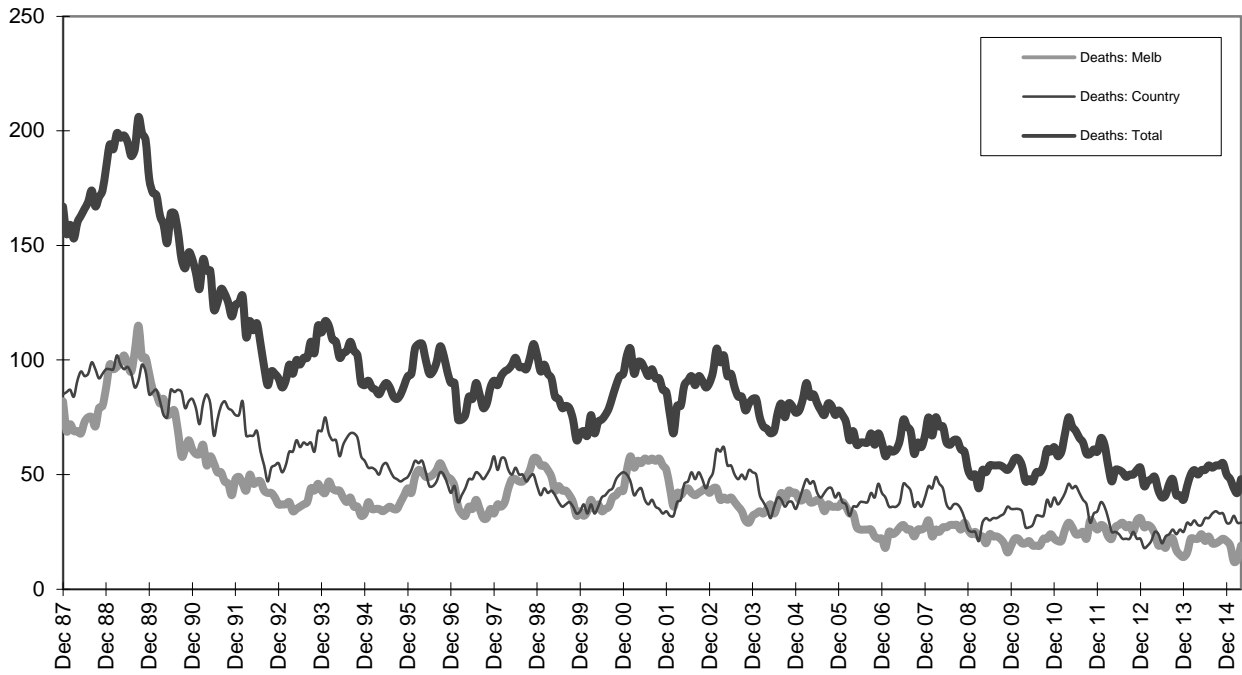
\* Due to changes in claim process procedures, locality data are missing for a significant number of claims lodged after October 2013.



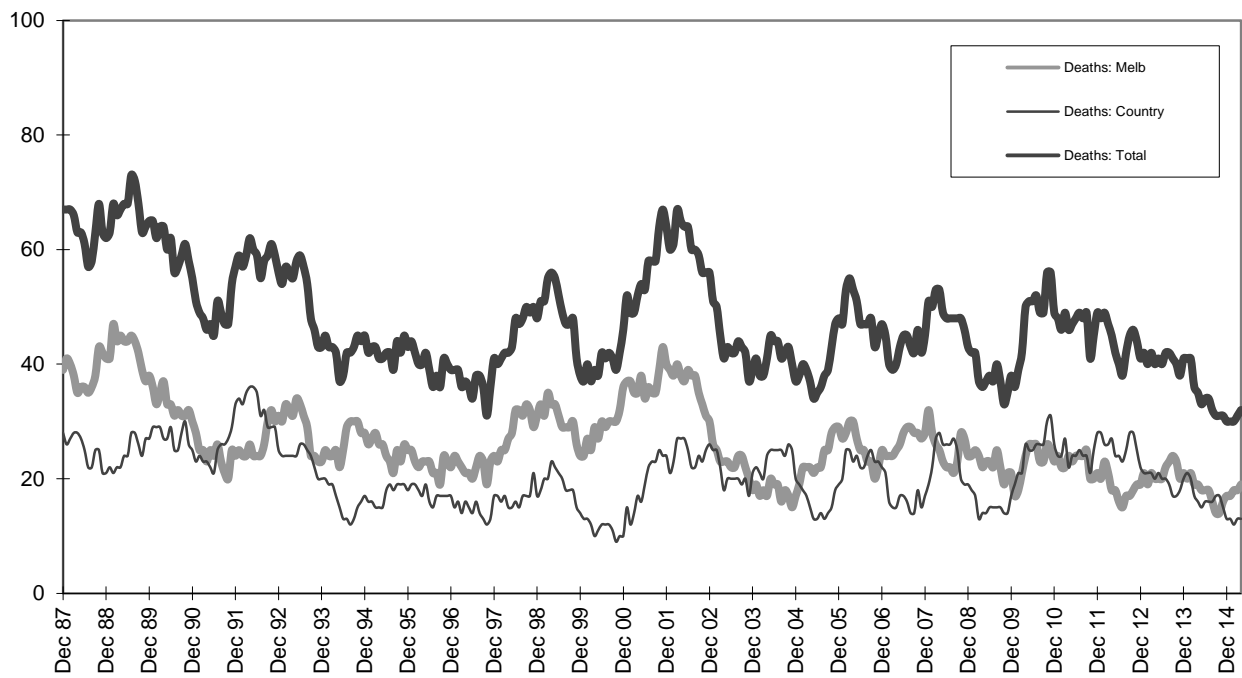
Graph 2a - Pedestrian fatalities (Melbourne/country)



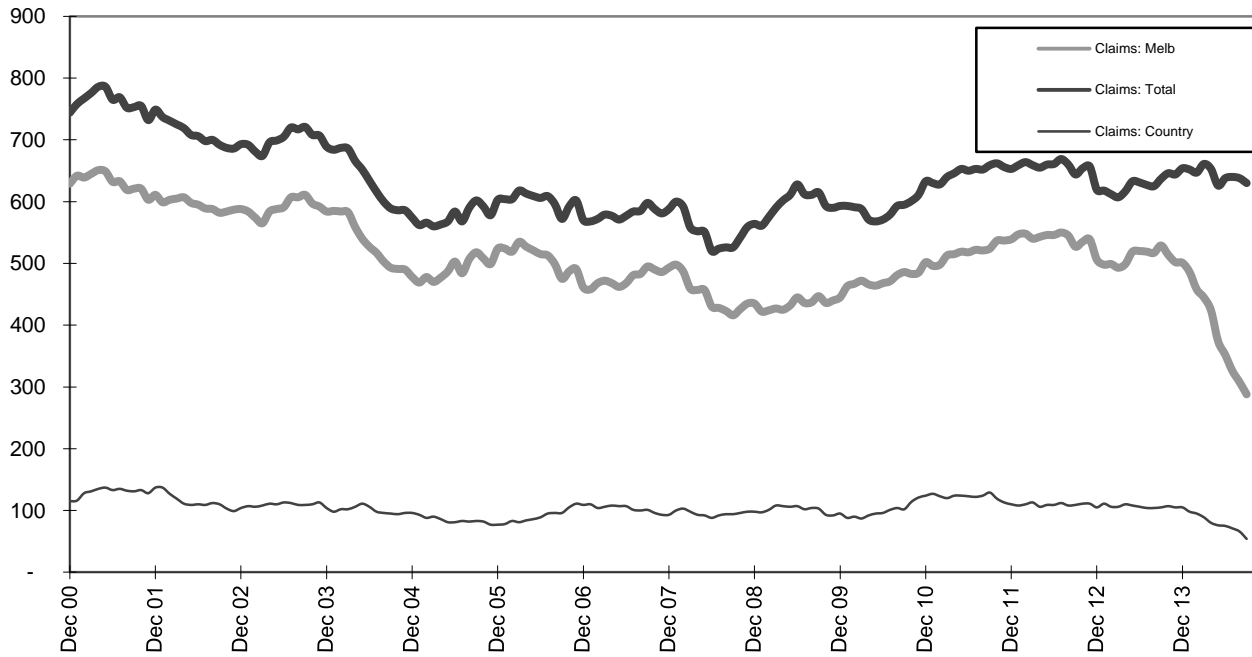
Graph 2b - Driver fatalities (Melbourne/country)



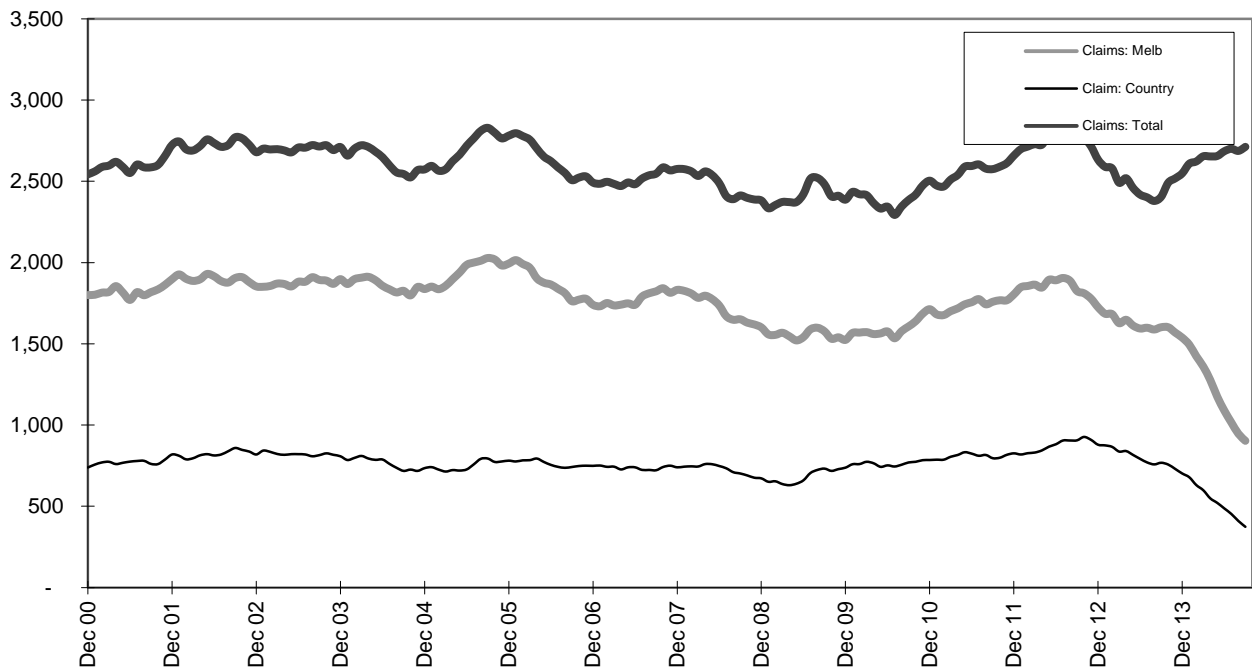
Graph 2c - Passenger fatalities (Melbourne/country)



Graph 2d - Motorcyclist fatalities (Melbourne/country)

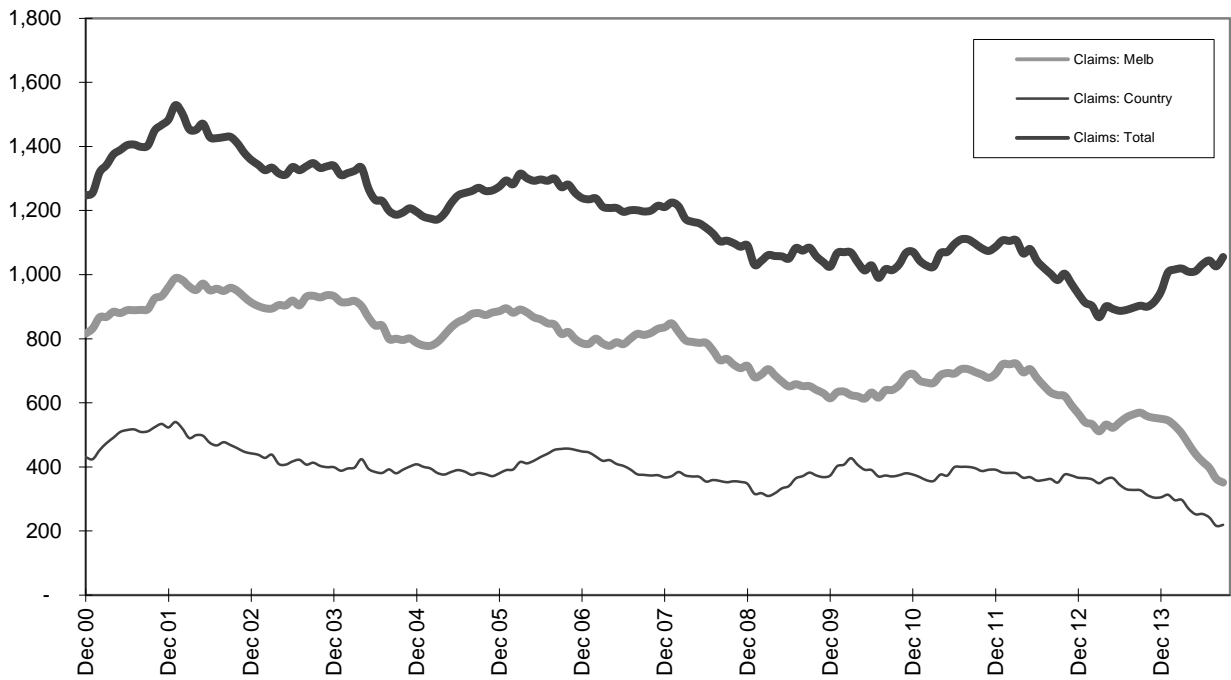


Graph 3a – Pedestrian Claims involving an acute hospital admission (Melbourne/country)

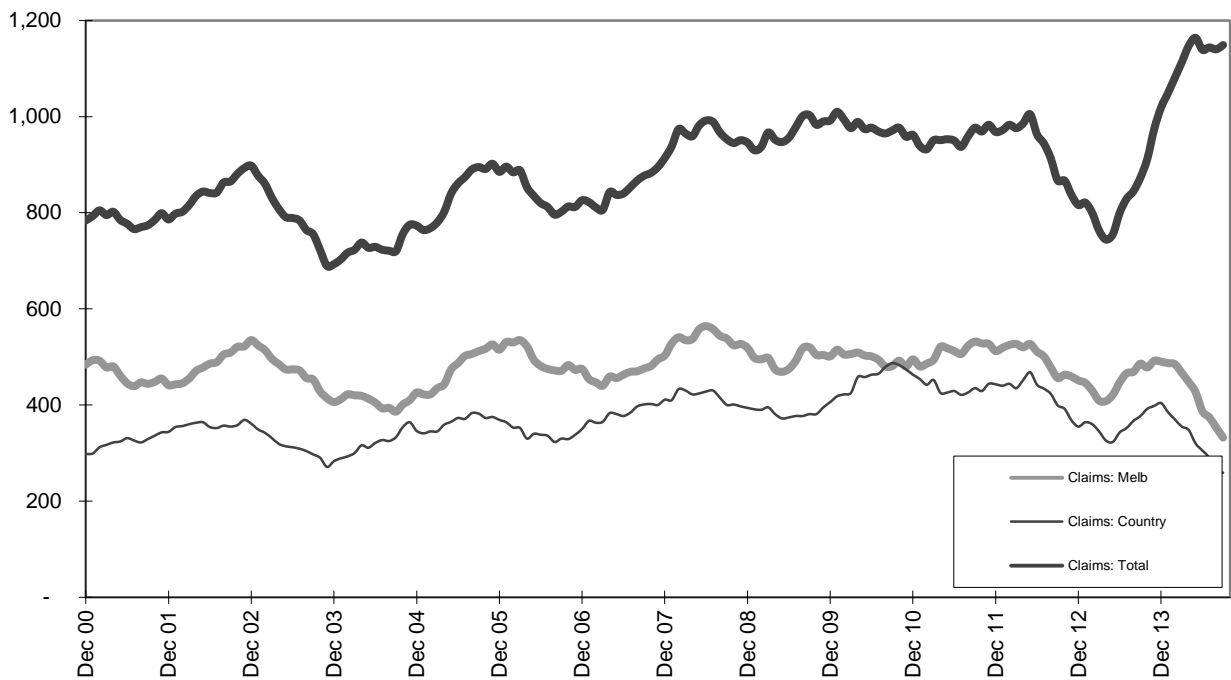


Graph 3b – Driver Claims involving an acute hospital admission (Melbourne/country)

\* Due to changes in claim process procedures, locality data are missing for a significant number of claims lodged after October 2013.



Graph 3c - Passenger Claims involving an acute hospital admission (Melbourne/country)



Graph 3d - Motorcyclist Claims involving an acute hospital admission (Melbourne/country)

\* Due to changes in claim process procedures, locality data are missing for a significant number of claims lodged after October 2013.