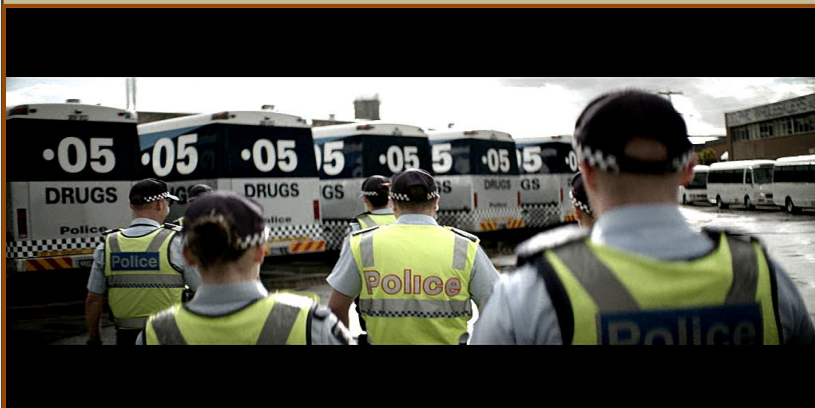


ROAD SAFETY STATISTICAL SUMMARY

July 2015



**TRANSPORT
ACCIDENT
COMMISSION**

60 Brougham Street
Geelong Vic 3220
PO Box 742
Geelong Vic 3220
Ausdoc DX 216079 Geelong

Telephone 1300 654 329
STD Toll Free 1800 332 556
Fax: 03 9656 9300
www.tac.vic.gov.au
ABN 22 033 947 623

Contents

Status Report.....	4
Fatalities.....	4
Claims involving an acute hospital admission*	5
Fatalities: 12 months to July 2015	6
Claims involving acute hospitalisation over 14 days: 12 months to January 2015 (claim acceptance date)	8
Claims involving an acute hospital admission: 12 months to January 2015 (claim acceptance date)	10
Fatalities: Victorian monthly totals since 1951	12
Fatalities by Week (2009 to 2015).....	13
The National Picture	14
Booze-Bus Random Breath Testing	15
Mobile Safety Camera Data	15
Explanations and References	16
Useful Internet Sites	17
Figures	18

Note about the data in this report

- All data provided in this report is the data most recently available at time of production. Fatalities, breath-test data and safety camera data are updated to the end of report month. A 6-month lag applies to TAC claims data.
- Reported data will have one extra day of exposure for leap years.
- Data is subject to revision as additional information about known accidents/claims is received, and as new accident/claim reports are received and processed.

*An acute hospital admission refers to a hospital admission that occurred within 7 days of accident.

Status Report

Fatalities

- The rolling 12 month number of road fatalities in July 2015 stands at 249, 2% less than in 2014 (254).
- 18 people were fatally injured in June 2015 on Victorian roads. This compares to 22 in July 2014.

Fatalities (rolling 12 month, to end July 2015)

Category	2015	2014	2013	2015 v 2014		2015 v 2013		5 Year Av
Fatal Injuries (Rolling 12 Month Total)								
Fatal (to July)	249	254	262	-5	(-2%)	-13	(-5%)	264
per 10,000 veh	0.55	0.57	0.60	-0.02	(-4%)	-0.05	(-8%)	0.60
per 100,000 pop	4.22	4.38	4.60	-0.16	(-4%)	-0.38	(-8%)	4.63
Accidents (Rolling 12 Month Total)								
Fatal (to July)	226	227	242	-1	(-0%)	-16	(-7%)	241
per 10,000 veh	0.49	0.51	0.55	-0.02	(-4%)	-0.06	(-11%)	0.55
per 100,000 pop	3.83	3.91	4.25	-0.08	(-2%)	-0.42	(-10%)	4.23

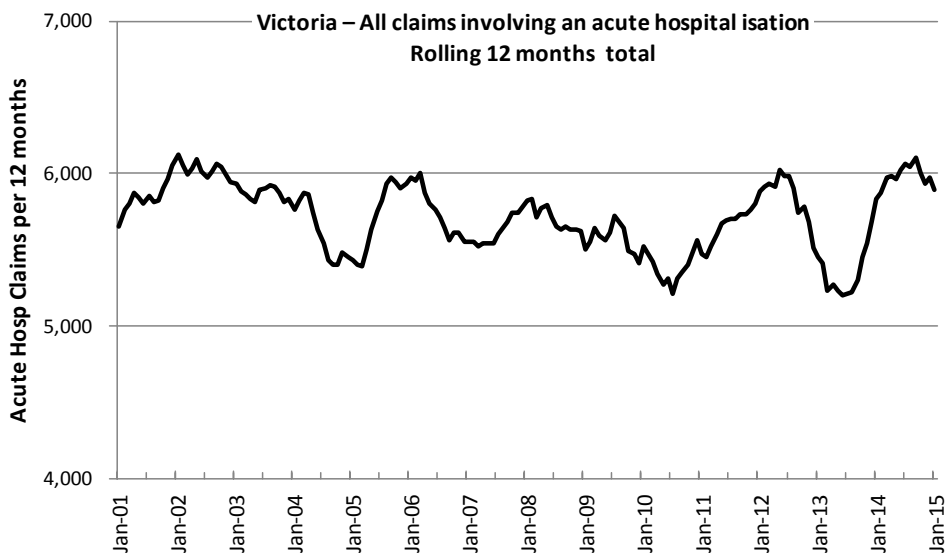
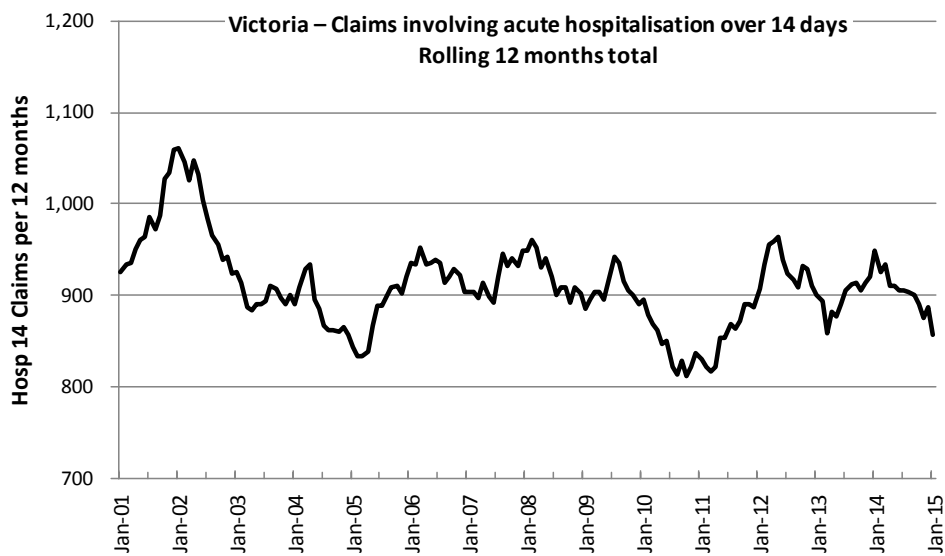


Victoria – Fatalities, rolling 12 months total

Claims involving an acute hospital admission*

(by claim acceptance date – rolling 12 month, to midnight 31 January 2015)

Category	2015	2014	2013	2015 v 2014		2015 v 2013		5 Year Av
Claims involving an acute hospitalisation over 14 days (Rolling 12 Month Total)								
Claims (to January)	857	948	900	-91	(-10%)	-43	(-5%)	888
per 100,000 pop	14.6	16.5	16.0	-1.9	(-12%)	-1.4	(-9%)	15.8
per 10,000 veh	1.9	2.1	2.1	-0.2	(-10%)	-0.2	(-10%)	2.1
All claims involving an acute hospitalisation (Rolling 12 Month Total)								
Claims (to January)	5,892	5,834	5,449	+58	(+1%)	+443	(+8%)	5,707
per 100,000 pop	100.7	101.5	96.7	-0.8	(-1%)	+4.0	(+4%)	100.8
per 10,000 veh	13.0	13.2	12.6	-0.2	(-2%)	+0.4	(+3%)	13.2



*An acute hospital admission refers to a hospital admission that occurred within 7 days of accident.

Fatalities: 12 months to July 2015

Category	2015	2014	2013	2015 v 2014		2015 v 2013		5 Year Av
Overview								
Fatalities	249	254	262	-5	(-2%)	-13	(-5%)	264
Accidents	226	227	242	-1	(-0%)	-16	(-7%)	241
Sex								
Female	69	77	79	-8	(-10%)	-10	(-13%)	76
Male	180	177	183	+3	(+2%)	-3	(-2%)	188
Roaduser								
Bicyclist	11	7	6	+4	(+57%)	+5	(+83%)	8
Driver	123	114	140	+9	(+8%)	-17	(-12%)	125
Motorcyclist	31	34	42	-3	(-9%)	-11	(-26%)	39
Passenger	51	54	41	-3	(-6%)	+10	(+24%)	53
Pedestrian	33	45	33	-12	(-27%)	0	(0%)	39
Location								
Melbourne	111	110	109	+1	(+1%)	+2	(+2%)	116
Rural Victoria	138	144	153	-6	(-4%)	-15	(-10%)	148
Agegroup								
0-4	3	2	2	+1	(+50%)	+1	(+50%)	3
5-15	5	9	7	-4	(-44%)	-2	(-29%)	7
16-17	13	3	3	+10	(+333%)	+10	(+333%)	7
18-20	19	12	21	+7	(+58%)	-2	(-10%)	24
21-25	26	25	33	+1	(+4%)	-7	(-21%)	31
26-29	22	19	12	+3	(+16%)	+10	(+83%)	19
30-39	28	40	34	-12	(-30%)	-6	(-18%)	34
40-49	34	30	34	+4	(+13%)	0	(0%)	32
50-59	25	34	31	-9	(-26%)	-6	(-19%)	31
60-69	29	27	33	+2	(+7%)	-4	(-12%)	29
70+	42	53	50	-11	(-21%)	-8	(-16%)	46
Alctime								
High (Melb)	57	55	62	+2	(+4%)	-5	(-8%)	61
High (Rural)	61	53	68	+8	(+15%)	-7	(-10%)	67
High (Vic)	118	108	130	+10	(+9%)	-12	(-9%)	129
Low (Melb)	54	55	47	-1	(-2%)	+7	(+15%)	55
Low (Rural)	77	91	85	-14	(-15%)	-8	(-9%)	80
Low (Vic)	131	146	132	-15	(-10%)	-1	(-1%)	135
Accident Type								
Intersection								
Adjacent direction	31	37	32	-6	(-16%)	-1	(-3%)	31
Opposing direction	12	4	2	+8	(+200%)	+10	(+500%)	6
Mid-block/other								
Head on	34	42	44	-8	(-19%)	-10	(-23%)	37
Same direction	10	13	15	-3	(-23%)	-5	(-33%)	13
Manoeuvre/o'taking	15	11	11	+4	(+36%)	+4	(+36%)	14
On path	3	9	4	-6	(-67%)	-1	(-25%)	6
Single vehicle	107	88	114	+19	(+22%)	-7	(-6%)	110
Other (incl peds)	37	50	40	-13	(-26%)	-3	(-8%)	46

Fatalities: 12 months to July 2015 – Continued

Category	2015	2014	2013	2015 v 2014		2015 v 2013		5 Year Av
Police Service Area (based on Local Government Area (see p.13))								
BALLARAT	4	5	5	-1	(-20%)	-1	(-20%)	6
BANYULE	2	1	3	+1	(+100%)	-1	(-33%)	2
BASS COAST	6	9	5	-3	(-33%)	+1	(+20%)	7
BAW BAW	2	6	7	-4	(-67%)	-5	(-71%)	6
BENALLA	15	9	10	+6	(+67%)	+5	(+50%)	9
BENDIGO	5	3	9	+2	(+67%)	-4	(-44%)	6
BOROONDARA	1	3	6	-2	(-67%)	-5	(-83%)	3
BRIMBANK	4	7	5	-3	(-43%)	-1	(-20%)	6
CAMPASPE	3	6	8	-3	(-50%)	-5	(-63%)	5
CARDINIA	8	5	2	+3	(+60%)	+6	(+300%)	7
CASEY	3	7	7	-4	(-57%)	-4	(-57%)	6
CENTRAL GOLDFIELDS	1	5	1	-4	(-80%)	0	(0%)	3
DAREBIN	3	2	2	+1	(+50%)	+1	(+50%)	3
EAST GIPPSLAND	9	3	5	+6	(+200%)	+4	(+80%)	6
FRANKSTON	4	3	0	+1	(+33%)	+4		3
GEELONG	5	4	15	+1	(+25%)	-10	(-67%)	9
GLEN EIRA	5	4	7	+1	(+25%)	-2	(-29%)	5
GREATER DANDENONG	6	2	5	+4	(+200%)	+1	(+20%)	4
HOBSONS BAY	0	1	2	-1	(-100%)	-2	(-100%)	1
HORSHAM	4	2	4	+2	(+100%)	0	(0%)	4
HUME	4	3	13	+1	(+33%)	-9	(-69%)	6
KINGSTON	2	5	7	-3	(-60%)	-5	(-71%)	5
KNOX	5	5	3	0	(0%)	+2	(+67%)	3
LA TROBE	3	5	7	-2	(-40%)	-4	(-57%)	5
MACEDON RANGES	11	7	6	+4	(+57%)	+5	(+83%)	6
MANNINGHAM	0	1	3	-1	(-100%)	-3	(-100%)	1
MARIBYRNONG	3	1	5	+2	(+200%)	-2	(-40%)	2
MAROONDAH	3	0	2	+3		+1	(+50%)	3
MELBOURNE	7	3	2	+4	(+133%)	+5	(+250%)	4
MELTON	6	10	3	-4	(-40%)	+3	(+100%)	6
MILDURA	1	6	3	-5	(-83%)	-2	(-67%)	3
MITCHELL	10	6	8	+4	(+67%)	+2	(+25%)	8
MONASH	3	4	3	-1	(-25%)	0	(0%)	4
MOONEE VALLEY	3	4	2	-1	(-25%)	+1	(+50%)	2
MOORABOOL	6	7	10	-1	(-14%)	-4	(-40%)	8
MORELAND	4	4	2	0	(0%)	+2	(+100%)	3
MORNINGTON PENINSULA	10	7	1	+3	(+43%)	+9	(+900%)	7
NILLUMBIK	2	1	0	+1	(+100%)	+2		2
NORTHERN GRAMPIANS	2	6	4	-4	(-67%)	-2	(-50%)	4
PORT PHILLIP	0	3	2	-3	(-100%)	-2	(-100%)	2
SHEPPARTON	4	2	8	+2	(+100%)	-4	(-50%)	5
SOUTHERN GRAMPIANS	7	4	3	+3	(+75%)	+4	(+133%)	5
STONNINGTON	4	3	2	+1	(+33%)	+2	(+100%)	2
SURF COAST	9	4	4	+5	(+125%)	+5	(+125%)	7
SWAN HILL	4	8	6	-4	(-50%)	-2	(-33%)	6
WANGARATTA	4	11	12	-7	(-64%)	-8	(-67%)	10
WARRNAMBOOL	9	16	5	-7	(-44%)	+4	(+80%)	8
WELLINGTON	4	7	3	-3	(-43%)	+1	(+33%)	5
WHITEHORSE	4	3	0	+1	(+33%)	+4		4
WHITTLESEA	4	5	5	-1	(-20%)	-1	(-20%)	5
WODONGA	9	3	4	+6	(+200%)	+5	(+125%)	5
WYNDHAM	6	4	8	+2	(+50%)	-2	(-25%)	6
YARRA	1	0	2	+1		-1	(-50%)	1
YARRA RANGES	5	9	6	-4	(-44%)	-1	(-17%)	7

Claims involving acute hospitalisation over 14 days: 12 months to January 2015 (claim acceptance date)

Category	2015	2014	2013	2015 v 2014	2015 v 2013	5 Year Av
Overview						
Claims	857	948	900	-91 (-10%)	-43 (-5%)	888
Sex						
Female	338	395	388	-57 (-14%)	-50 (-13%)	359
Male	517	553	511	-36 (-7%)	+6 (+1%)	529
Roaduser						
Driver	336	397	374	-61 (-15%)	-38 (-10%)	350
Passenger	127	158	147	-31 (-20%)	-20 (-14%)	142
Motorcyclist	161	143	154	+18 (+13%)	+7 (+5%)	162
Pedestrian	169	202	170	-33 (-16%)	-1 (-1%)	178
Cyclist	36	28	34	+8 (+29%)	+2 (+6%)	36
Train/Tram	11	3	8	+8 (+267%)	+3 (+38%)	7
Location						
Melbourne	548	590	582	-42 (-7%)	-34 (-6%)	568
Rural Victoria	286	351	314	-65 (-19%)	-28 (-9%)	313
Agegroup						
0-4	3	3	1	0 (0%)	+2 (+200%)	3
5-15	16	11	10	+5 (+45%)	+6 (+60%)	14
16-17	11	18	19	-7 (-39%)	-8 (-42%)	18
18-20	48	63	61	-15 (-24%)	-13 (-21%)	57
21-25	79	86	79	-7 (-8%)	0 (0%)	81
26-29	54	41	45	+13 (+32%)	+9 (+20%)	51
30-39	100	107	110	-7 (-7%)	-10 (-9%)	108
40-49	111	116	127	-5 (-4%)	-16 (-13%)	118
50-59	105	111	98	-6 (-5%)	+7 (+7%)	103
60-69	96	112	110	-16 (-14%)	-14 (-13%)	103
70+	234	280	240	-46 (-16%)	-6 (-3%)	232
Alctime						
High (Melb)	212	257	248	-45 (-18%)	-36 (-15%)	240
High (Rural)	115	124	126	-9 (-7%)	-11 (-9%)	124
High (Vic)	327	381	374	-54 (-14%)	-47 (-13%)	364
Low (Melb)	336	333	334	+3 (+1%)	+2 (+1%)	328
Low (Rural)	171	227	188	-56 (-25%)	-17 (-9%)	188
Low (Vic)	507	560	522	-53 (-9%)	-15 (-3%)	516
Accident Type						
Intersection						
Adjacent direction	91	130	126	-39 (-30%)	-35 (-28%)	113
Opposing direction	55	65	61	-10 (-15%)	-6 (-10%)	61
Mid-block/other						
Head on	70	91	84	-21 (-23%)	-14 (-17%)	81
Same direction	73	75	86	-2 (-3%)	-13 (-15%)	85
Manoeuvre/o'taking	44	65	62	-21 (-32%)	-18 (-29%)	54
On path	31	22	19	+9 (+41%)	+12 (+63%)	24
Single vehicle	272	254	241	+18 (+7%)	+31 (+13%)	250
Other (incl peds)	221	246	221	-25 (-10%)	0 (0%)	220

Note: Excludes rejected claims and claims for interstate crashes.

Claims involving acute hospitalisation over 14 days: 12 months to January 2015 (claim acceptance date) –
Continued

Category	2015	2014	2013	2015 v 2013		2015 v 2014		5 Year Av
Police Service Area (based on Local Government Area (see p.13))								
BALLARAT	15	20	10	-5	(-25%)	+5	(+50%)	15
BANYULE	7	11	10	-4	(-36%)	-3	(-30%)	10
BASS COAST	16	19	14	-3	(-16%)	+2	(+14%)	17
BAW BAW	8	7	11	+1	(+14%)	-3	(-27%)	10
BENALLA	21	18	17	+3	(+17%)	+4	(+24%)	21
BENDIGO	9	20	13	-11	(-55%)	-4	(-31%)	17
BOROONDARA	27	18	22	+9	(+50%)	+5	(+23%)	23
BRIMBANK	31	16	29	+15	(+94%)	+2	(+7%)	23
CAMPASPE	6	9	6	-3	(-33%)	0	(0%)	6
CARDINIA	13	12	11	+1	(+8%)	+2	(+18%)	15
CASEY	30	30	21	0	(0%)	+9	(+43%)	27
CENTRAL GOLDFIELDS	4	8	5	-4	(-50%)	-1	(-20%)	5
DAREBIN	17	17	21	0	(0%)	-4	(-19%)	18
EAST GIPPSLAND	9	7	18	+2	(+29%)	-9	(-50%)	12
FRANKSTON	15	13	11	+2	(+15%)	+4	(+36%)	16
GEELONG	26	34	33	-8	(-24%)	-7	(-21%)	28
GLEN EIRA	19	38	21	-19	(-50%)	-2	(-10%)	29
GREATER DANDENONG	24	30	27	-6	(-20%)	-3	(-11%)	27
HOBSONS BAY	7	12	11	-5	(-42%)	-4	(-36%)	10
HORSHAM	7	6	9	+1	(+17%)	-2	(-22%)	8
HUME	20	27	31	-7	(-26%)	-11	(-35%)	25
KINGSTON	22	25	17	-3	(-12%)	+5	(+29%)	20
KNOX	10	17	24	-7	(-41%)	-14	(-58%)	15
LA TROBE	10	10	14	0	(0%)	-4	(-29%)	14
MACEDON RANGES	21	22	17	-1	(-5%)	+4	(+24%)	18
MANNINGHAM	10	15	21	-5	(-33%)	-11	(-52%)	14
MARIBYRNONG	5	9	14	-4	(-44%)	-9	(-64%)	12
MAROONDAH	3	7	5	-4	(-57%)	-2	(-40%)	8
MELBOURNE	35	30	31	+5	(+17%)	+4	(+13%)	31
MELTON	12	10	19	+2	(+20%)	-7	(-37%)	13
MILDURA	7	8	11	-1	(-13%)	-4	(-36%)	8
MITCHELL	10	29	27	-19	(-66%)	-17	(-63%)	19
MONASH	17	24	22	-7	(-29%)	-5	(-23%)	21
MOONEE VALLEY	25	15	21	+10	(+67%)	+4	(+19%)	18
MOORABOOL	20	17	11	+3	(+18%)	+9	(+82%)	15
MORELAND	22	34	25	-12	(-35%)	-3	(-12%)	25
MORNINGTON PENINSULA	26	25	38	+1	(+4%)	-12	(-32%)	29
NILLUMBIK	7	5	9	+2	(+40%)	-2	(-22%)	6
NORTHERN GRAMPIANS	12	15	7	-3	(-20%)	+5	(+71%)	9
PORT PHILLIP	21	14	10	+7	(+50%)	+11	(+110%)	13
SHEPPARTON	9	15	14	-6	(-40%)	-5	(-36%)	11
SOUTHERN GRAMPIANS	13	8	8	+5	(+63%)	+5	(+63%)	10
STONNINGTON	15	12	14	+3	(+25%)	+1	(+7%)	16
SURF COAST	8	16	6	-8	(-50%)	+2	(+33%)	11
SWAN HILL	12	5	10	+7	(+140%)	+2	(+20%)	8
WANGARATTA	11	20	16	-9	(-45%)	-5	(-31%)	16
WARRNAMBOOL	11	19	13	-8	(-42%)	-2	(-15%)	14
WELLINGTON	12	7	10	+5	(+71%)	+2	(+20%)	10
WHITEHORSE	18	21	21	-3	(-14%)	-3	(-14%)	19
WHITTLESEA	21	25	29	-4	(-16%)	-8	(-28%)	21
WODONGA	9	12	14	-3	(-25%)	-5	(-36%)	11
WYNDHAM	25	23	21	+2	(+9%)	+4	(+19%)	21
YARRA	15	15	11	0	(0%)	+4	(+36%)	12
YARRA RANGES	29	40	15	-11	(-28%)	+14	(+93%)	31

Note: excludes rejected claims and claims for interstate crashes

Claims involving an acute hospital admission: 12 months to January 2015 (claim acceptance date)

Category	2015	2014	2013	2015 v 2014		2015 v 2013		5 Year Av
Overview								
Claims	5,892	5,834	5,449	+58	(+1%)	+443	(+8%)	5,707
Sex								
Female	2,526	2,372	2,319	+154	(+6%)	+207	(+9%)	2,408
Male	3,357	3,458	3,129	-101	(-3%)	+228	(+7%)	3,295
Roaduser								
Driver	2,638	2,617	2,590	+21	(+1%)	+48	(+2%)	2,603
Passenger	1,022	1,009	912	+13	(+1%)	+110	(+12%)	1,019
Motorcyclist	1,096	1,052	823	+44	(+4%)	+273	(+33%)	976
Pedestrian	611	651	618	-40	(-6%)	-7	(-1%)	634
Cyclist	381	399	354	-18	(-5%)	+27	(+8%)	364
Train/Tram	32	28	27	+4	(+14%)	+5	(+19%)	27
Location								
Melbourne	3,996	3,930	3,589	+66	(+2%)	+407	(+11%)	3,844
Rural Victoria	1,694	1,823	1,822	-129	(-7%)	-128	(-7%)	1,791
Agegroup								
0-4	44	56	50	-12	(-21%)	-6	(-12%)	50
5-15	201	174	174	+27	(+16%)	+27	(+16%)	193
16-17	92	104	110	-12	(-12%)	-18	(-16%)	113
18-20	478	506	504	-28	(-6%)	-26	(-5%)	517
21-25	749	735	663	+14	(+2%)	+86	(+13%)	710
26-29	468	431	425	+37	(+9%)	+43	(+10%)	436
30-39	908	855	859	+53	(+6%)	+49	(+6%)	881
40-49	886	873	808	+13	(+1%)	+78	(+10%)	856
50-59	761	727	676	+34	(+5%)	+85	(+13%)	715
60-69	531	533	464	-2	(-0%)	+67	(+14%)	508
70+	774	840	716	-66	(-8%)	+58	(+8%)	728
Alctime								
High (Melb)	1,665	1,688	1,606	-23	(-1%)	+59	(+4%)	1,693
High (Rural)	679	718	777	-39	(-5%)	-98	(-13%)	751
High (Vic)	2,344	2,406	2,383	-62	(-3%)	-39	(-2%)	2,444
Low (Melb)	2,331	2,242	1,983	+89	(+4%)	+348	(+18%)	2,151
Low (Rural)	1,015	1,105	1,045	-90	(-8%)	-30	(-3%)	1,041
Low (Vic)	3,346	3,347	3,028	-1	(-0%)	+318	(+11%)	3,192
Accident Type								
Intersection								
Adjacent direction	740	865	783	-125	(-14%)	-43	(-5%)	826
Opposing direction	477	520	488	-43	(-8%)	-11	(-2%)	481
Mid-block/other								
Head on	313	317	301	-4	(-1%)	+12	(+4%)	324
Same direction	887	826	825	+61	(+7%)	+62	(+8%)	884
Manoeuvre/o'taking	313	338	293	-25	(-7%)	+20	(+7%)	321
On path	278	254	221	+24	(+9%)	+57	(+26%)	231
Single vehicle	1,718	1,586	1,469	+132	(+8%)	+249	(+17%)	1,594
Other (incl peds)	1,166	1,128	1,069	+38	(+3%)	+97	(+9%)	1,046

Note: excludes rejected claims and claims for interstate crashes

Claims involving an acute hospital admission: 12 months to January 2015 (claim acceptance date) –
Continued

Category	2015	2014	2013	2015 v 2014		2015 v 2013		5 Year Av
Police Service Area (based on Local Government Area (see p.13))								
BALLARAT	75	100	100	-25	(-25%)	-25	(-25%)	94
BANYULE	64	59	61	+5	(+8%)	+3	(+5%)	61
BASS COAST	91	88	68	+3	(+3%)	+23	(+34%)	82
BAW BAW	71	53	59	+18	(+34%)	+12	(+20%)	60
BENALLA	99	129	104	-30	(-23%)	-5	(-5%)	120
BENDIGO	79	88	123	-9	(-10%)	-44	(-36%)	96
BOROONDARA	138	146	109	-8	(-5%)	+29	(+27%)	136
BRIMBANK	149	140	168	+9	(+6%)	-19	(-11%)	146
CAMPASPE	36	34	42	+2	(+6%)	-6	(-14%)	38
CARDINIA	117	93	82	+24	(+26%)	+35	(+43%)	99
CASEY	256	255	206	+1	(+0%)	+50	(+24%)	240
CENTRAL GOLDFIELDS	38	26	25	+12	(+46%)	+13	(+52%)	27
DAREBIN	93	91	102	+2	(+2%)	-9	(-9%)	99
EAST GIPPSLAND	57	56	89	+1	(+2%)	-32	(-36%)	64
FRANKSTON	114	109	122	+5	(+5%)	-8	(-7%)	130
GEELONG	198	224	222	-26	(-12%)	-24	(-11%)	224
GLEN EIRA	183	197	148	-14	(-7%)	+35	(+24%)	175
GREATER DANDENONG	254	247	189	+7	(+3%)	+65	(+34%)	219
HOBSONS BAY	63	69	64	-6	(-9%)	-1	(-2%)	65
HORSHAM	31	29	38	+2	(+7%)	-7	(-18%)	34
HUME	188	152	144	+36	(+24%)	+44	(+31%)	154
KINGSTON	148	141	131	+7	(+5%)	+17	(+13%)	135
KNOX	108	101	97	+7	(+7%)	+11	(+11%)	111
LA TROBE	49	69	60	-20	(-29%)	-11	(-18%)	64
MACEDON RANGES	92	112	76	-20	(-18%)	+16	(+21%)	87
MANNINGHAM	54	67	85	-13	(-19%)	-31	(-36%)	68
MARIBYRNONG	60	82	65	-22	(-27%)	-5	(-8%)	75
MAROONDAH	49	58	53	-9	(-16%)	-4	(-8%)	63
MELBOURNE	243	257	245	-14	(-5%)	-2	(-1%)	238
MELTON	64	78	72	-14	(-18%)	-8	(-11%)	72
MILDURA	28	44	38	-16	(-36%)	-10	(-26%)	36
MITCHELL	90	105	103	-15	(-14%)	-13	(-13%)	93
MONASH	200	206	166	-6	(-3%)	+34	(+20%)	178
MOONEE VALLEY	127	115	113	+12	(+10%)	+14	(+12%)	109
MOORABOOL	101	118	95	-17	(-14%)	+6	(+6%)	98
MORELAND	149	151	125	-2	(-1%)	+24	(+19%)	143
MORNINGTON PENINSULA	152	134	142	+18	(+13%)	+10	(+7%)	156
NILLUMBIK	30	29	42	+1	(+3%)	-12	(-29%)	36
NORTHERN GRAMPPIANS	52	35	38	+17	(+49%)	+14	(+37%)	38
PORT PHILLIP	149	127	105	+22	(+17%)	+44	(+42%)	120
SHEPPARTON	67	66	74	+1	(+2%)	-7	(-9%)	64
SOUTHERN GRAMPPIANS	47	49	46	-2	(-4%)	+1	(+2%)	47
STONNINGTON	161	131	107	+30	(+23%)	+54	(+50%)	131
SURF COAST	67	69	49	-2	(-3%)	+18	(+37%)	68
SWAN HILL	44	33	38	+11	(+33%)	+6	(+16%)	36
WANGARATTA	84	106	102	-22	(-21%)	-18	(-18%)	98
WARRNAMBOOL	67	73	77	-6	(-8%)	-10	(-13%)	85
WELLINGTON	84	59	66	+25	(+42%)	+18	(+27%)	72
WHITEHORSE	95	123	112	-28	(-23%)	-17	(-15%)	116
WHITTLESEA	144	151	151	-7	(-5%)	-7	(-5%)	138
WODONGA	47	58	90	-11	(-19%)	-43	(-48%)	63
WYNDHAM	168	152	130	+16	(+11%)	+38	(+29%)	145
YARRA	115	105	91	+10	(+10%)	+24	(+26%)	107
YARRA RANGES	161	164	162	-3	(-2%)	-1	(-1%)	177

Note: excludes rejected claims and claims for interstate crashes

Fatalities: Victorian monthly totals since 1951

Year	Jan	Feb	Mar	Apr	May	Jun	Jul	Aug	Sep	Oct	Nov	Dec	Totals
1951							61	59	52	38	29	41	
1952	45	40	54	61	54	69	67	55	44	44	31	20	584
1953	23	28	54	58	49	42	50	37	44	27	36	32	480
1954	44	42	28	60	55	36	63	33	25	52	30	41	509
1955	44	36	45	55	48	56	64	44	44	32	40	40	548
1956	34	48	51	67	53	65	71	47	39	39	44	48	606
1957	50	41	46	58	52	54	57	53	51	46	32	49	589
1958	50	38	42	58	54	41	54	53	57	40	57	52	596
1959	50	57	61	50	75	55	42	48	52	55	63	63	671
1960	49	53	57	76	70	70	67	62	61	77	52	66	760
1961	63	57	68	74	58	68	78	82	59	62	60	65	794
1962	65	41	76	78	72	80	70	77	62	53	64	70	808
1963	67	56	65	85	66	68	77	55	55	58	61	67	780
1964	73	71	78	71	83	89	80	89	67	66	62	75	904
1965	63	64	86	88	80	87	79	69	81	77	68	87	929
1966	75	59	75	103	74	86	87	80	75	66	90	85	955
1967	61	79	91	97	81	71	59	67	70	68	60	83	887
1968	70	78	86	78	73	76	73	77	72	80	81	105	949
1969	79	68	79	87	86	77	87	83	87	83	94	101	1,011
1970	85	84	106	80	87	88	110	106	78	95	68	74	1,061
1971	83	75	77	68	76	86	85	72	78	73	74	76	923
1972	61	62	75	82	75	71	98	85	83	62	80	81	915
1973	75	75	95	85	64	66	61	85	89	88	66	86	935
1974	56	62	81	60	70	73	67	62	53	70	80	72	806
1975	67	65	87	73	97	94	57	75	69	66	71	89	910
1976	79	78	88	78	69	79	60	70	82	78	77	100	938
1977	65	71	89	79	65	79	70	91	68	74	96	107	954
1978	75	54	95	63	64	69	68	77	65	84	83	72	869
1979	63	60	86	75	45	64	66	75	69	79	72	93	847
1980	48	55	66	59	47	56	60	53	45	58	61	49	657
1981	69	60	58	61	74	65	61	63	68	71	59	57	766
1982	55	53	59	59	67	45	47	71	53	69	65	66	709
1983	42	59	53	63	62	61	65	51	59	43	54	52	664
1984	65	48	58	50	56	48	46	50	71	53	55	58	658
1985	56	47	50	65	75	50	51	50	58	61	56	64	683
1986	56	50	70	69	59	53	42	54	54	52	59	51	669
1987	62	43	57	52	63	59	62	49	62	61	55	80	705
1988	49	58	69	54	79	50	54	52	64	59	43	70	701
1989	76	65	80	59	67	73	52	65	82	50	41	66	776
1990	48	44	55	39	56	64	41	34	48	35	40	44	548
1991	45	39	70	30	34	29	44	47	41	36	35	53	503
1992	34	33	34	47	33	29	23	27	28	38	30	40	396
1993	27	40	37	39	44	33	33	27	34	39	43	40	436
1994	36	31	44	35	27	33	29	37	17	27	32	30	378
1995	38	35	26	33	34	41	27	34	34	32	38	46	418
1996	40	47	35	38	28	29	30	35	49	24	33	30	418
1997	36	25	30	30	40	22	39	26	26	29	39	35	377
1998	29	29	32	36	31	22	40	19	37	36	49	30	390
1999	32	31	35	35	34	24	35	26	28	38	29	37	384
2000	32	26	46	32	39	32	33	29	36	29	44	29	407
2001	44	30	31	32	31	41	34	37	35	51	41	37	444
2002	32	31	45	31	45	32	27	25	31	30	31	37	397
2003	21	41	36	28	31	28	20	23	23	24	24	31	330
2004	32	22	30	30	46	28	27	26	22	28	25	27	343
2005	33	27	47	21	29	23	30	25	25	33	17	36	346
2006	24	37	23	23	27	23	25	22	43	20	31	39	337
2007	23	23	32	25	26	28	28	20	23	37	26	41	332
2008	28	20	37	25	25	20	27	27	18	25	26	25	303
2009	31	18	23	32	19	30	19	21	14	28	21	34	290
2010	26	25	23	20	31	26	26	18	17	36	12	28	288
2011	18	20	34	31	30	24	25	14	12	22	30	27	287
2012	30	20	25	19	23	22	17	25	17	34	26	24	282
2013	14	24	24	19	18	13	24	20	19	15	23	30	243
2014	25	21	25	14	23	17	22	21	20	19	28	14	249
2015	25	22	23	21	21	22	18						
Ave	48	46	55	53	53	51	51	50	49	50	49	55	613
Max	85	84	106	103	97	94	110	106	89	95	96	107	1,061
Min	14	18	23	14	18	13	17	14	12	15	12	14	243

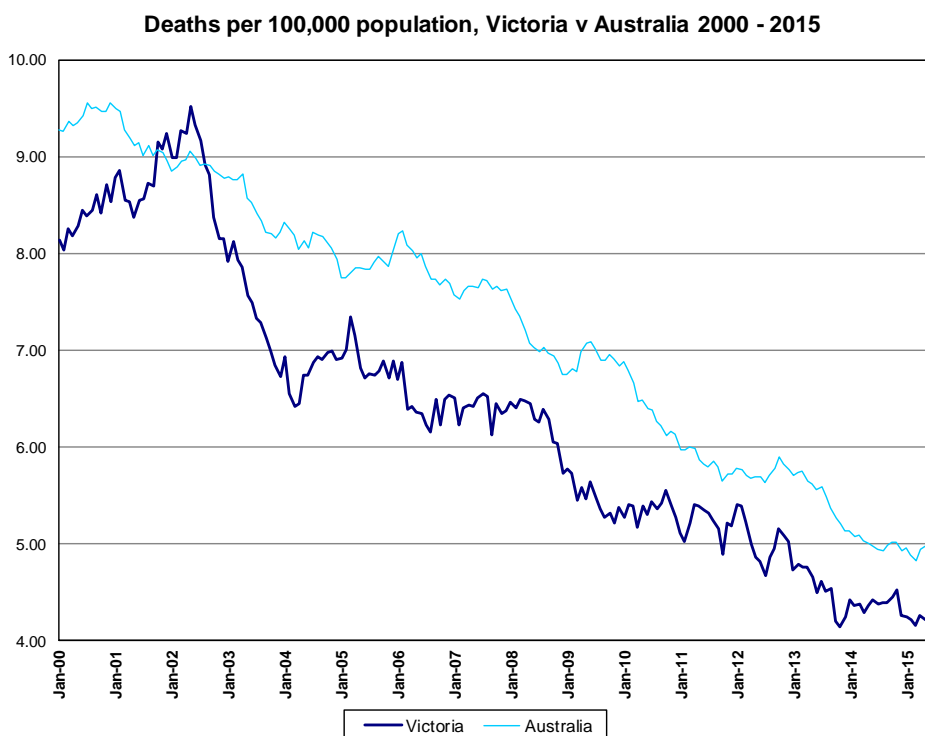
Fatalities by Week (2009 to 2015)

Week Ending	2009	2010	2011	2012	2013	2014	2015	Cumulative 2015	% Change 2015-2014	12 Month Moving Total
5-Jan	7	3	2	3	1	0	2	2	-	251
12-Jan	10	5	6	7	3	5	5	7	+40%	251
19-Jan	4	6	3	8	6	7	6	13	+8%	250
26-Jan	4	5	4	9	4	9	2	15	-29%	243
2-Feb	6	9	6	5	3	6	10	25	-7%	247
9-Feb	6	7	5	3	8	4	6	31	0%	249
16-Feb	7	4	6	7	6	8	4	35	-10%	245
23-Feb	4	8	3	6	6	2	6	41	0%	249
2-Mar	1	7	3	2	2	6	4	45	-4%	247
9-Mar	3	2	10	3	4	8	8	53	-4%	247
16-Mar	6	8	6	11	6	4	6	59	0%	249
23-Mar	6	3	9	5	10	4	2	61	-3%	247
30-Mar	8	7	9	6	2	6	3	64	-7%	244
6-Apr	5	4	6	7	4	6	3	67	-11%	241
13-Apr	5	5	9	2	6	6	6	73	-10%	241
20-Apr	11	7	7	6	4	2	7	80	-4%	246
27-Apr	9	1	6	3	5	2	4	84	-1%	248
4-May	6	6	6	10	6	3	4	88	0%	249
11-May	7	8	6	2	3	4	6	94	+2%	251
18-May	1	4	7	4	1	3	4	98	+3%	252
25-May	2	11	10	6	2	5	4	102	+2%	251
1-Jun	6	5	5	2	9	9	5	107	-2%	247
8-Jun	4	7	4	8	2	2	5	112	+1%	250
15-Jun	9	4	6	3	3	2	4	116	+3%	252
22-Jun	7	8	7	8	5	3	4	120	+3%	253
29-Jun	9	7	6	3	1	8	5	125	+1%	250
6-Jul	3	7	4	2	5	6	11	136	+5%	255
13-Jul	6	2	8	5	7	7	2	138	+1%	250
20-Jul	4	3	6	5	4	3	2	140	0%	249
27-Jul	5	8	6	5	5	4	2	142	-1%	247
3-Aug	4	10	3	1	8	4				
10-Aug	7	3	5	5	1	5				
17-Aug	6	5	3	5	3	6				
24-Aug	3	5	2	6	6	4				
31-Aug	3	1	3	8	5	5				
7-Sep	2	5	1	5	5	4				
14-Sep	4	1	4	6	2	6				
21-Sep	4	4	1	3	3	4				
28-Sep	3	5	5	3	8	3				
5-Oct	2	9	4	7	3	4				
12-Oct	6	10	5	8	2	8				
19-Oct	8	5	3	9	3	0				
26-Oct	8	7	3	6	3	8				
2-Nov	5	8	8	6	6	2				
9-Nov	3	1	6	7	8	3				
16-Nov	9	2	12	6	2	8				
23-Nov	6	3	9	5	8	3				
30-Nov	4	5	2	9	4	13				
7-Dec	5	4	10	7	6	5				
14-Dec	8	8	3	4	10	3				
21-Dec	11	6	7	1	9	3				
28-Dec	6	8	6	8	4	3				
31-Dec	2	2	1	1	1	1				
Total	290	288	287	282	243	249				

The National Picture

State	Fatalities (12 months to July)					2015 v 2014	
	2015	2014	2013	2012			
NSW	324	329	344	381	-5	(-2%)	
VIC	249	254	262	261	-5	(-2%)	
QLD	239	230	298	270	+9	(+4%)	
SA	108	86	105	87	+22	(+26%)	
WA	169	164	176	189	+5	(+3%)	
TAS	37	41	33	22	-4	(-10%)	
NT	42	42	43	50		(0%)	
ACT	14	8	10	6	+6	(+75%)	
AUST TOTAL	1,182	1,154	1,271	1,266	+28	(+2%)	
AUST minus VIC	933	900	1,009	1,005	+33	(+4%)	

State	Fatalities per 10,000 registered vehicles (12 months to July)			Fatalities per 100,000 population (12 months to July)		
	2015	2014	2013	2015	2014	2013
NSW	0.62	0.64	0.69	4.27	4.40	4.67
VIC	0.55	0.57	0.60	4.22	4.38	4.60
QLD	0.63	0.62	0.83	5.02	4.90	6.45
SA	0.80	0.65	0.81	6.37	5.12	6.31
WA	0.77	0.77	0.86	6.48	6.43	7.09
TAS	0.82	0.93	0.76	7.17	7.98	6.44
NT	2.71	2.76	2.89	16.91	17.30	18.10
ACT	0.49	0.29	0.37	3.61	2.08	2.63
AUST TOTAL	0.66	0.65	0.74	4.99	4.94	5.58
AUST minus VIC	0.69	0.68	0.79	5.17	5.10	5.86



Victoria v Australia - 12 Month Moving Fatality Rate

Booze-Bus Random Breath Testing

12 months to March 2015 (monthly totals)

	2014									2015		
	Apr	May	Jun	Jul	Aug	Sep	Oct	Nov	Dec	Jan	Feb	Mar
Melbourne	96,725	107,794	103200	110,427	110,124	101,857	100,252	86,261	99,008	95,430	76,758	84,559
Country	9,737	12,033	7,548	9,300	7,841	7,989	8,116	10,510	7,084	5,191	7,882	5,830
Vic Total	106,462	119,827	110,748	119,727	117,965	109,846	108,368	96,771	106,092	100,621	84,640	90,389

12 months to March 2015 vs previous 12 months

	2015	2014	2013	2015 v 2014	2015 v 2013
Melbourne	1,172,395	1,060,175	1,062,075	+112220 (+11%)	+110320 (+10%)
Country	99,061	90,264	101,223	+8797 (+10%)	-2162 (-2%)
Vic Total	1,271,456	1,150,439	1,163,298	+121017 (+11%)	+108158 (+9%)

Mobile Safety Camera Data

Speed Infringements Issued from Mobile Cameras (monthly totals)

Monthly Average = 33,669

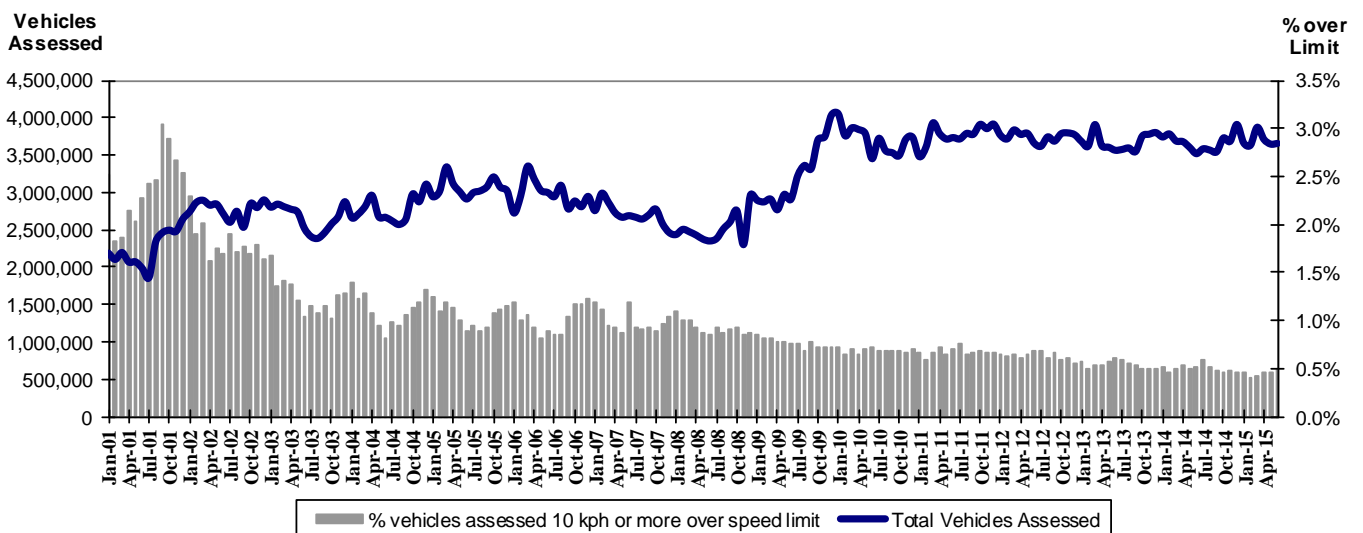
2014						2015					
Jul	Aug	Sep	Oct	Nov	Dec	Jan	Feb	Mar	Apr	May	Jun
42,640	34,202	32,625	35,422	32,416	28,732	37,982	31,250	31,144	33,790	30,434	33,386

Excessive Speed Infringements (ESI) Issued from Mobile Cameras (monthly totals)

Monthly Average = 308

2014						2015					
Jul	Aug	Sep	Oct	Nov	Dec	Jan	Feb	Mar	Apr	May	Jun
252	366	316	390	317	292	334	287	258	311	270	303

Notes: An ESI is defined as 25km/h over the speed limit except in a 110km/h zone where it is 20km/h over the limit.



Mobile Safety Cameras – Vehicles assessed and percentage of vehicles assessed 10km/h or more over speed limit per month

Explanations and References

Hi-Alc time is those times of the day and week (*shaded* in the table below) when casualty crashes are ten times more likely to involve alcohol than casualty crashes at other (Lo-Alc time) times.

	12am - 6am	6am - 8am	8am - 10am	10am - 2pm	2pm - 4pm	4pm - 6pm	6pm - 12pm
Monday							
Tuesday							
Wednesday							
Thursday							
Friday							
Saturday							
Sunday							

Police Service Areas align with Local Government Areas. Most Police Service Areas are equivalent to a single Local Government Area, while the remainder comprise two or three Local Government Areas.

Police Service Area	Local Government Area(s)	Police Service Area	Local Government Area(s)
BALLARAT	BALLARAT, PYRENEES	MAROONDAH	MAROONDAH
BANYULE	BANYULE	MELBOURNE	MELBOURNE
BASS COAST	BASS COAST, SOUTH GIPPSLAND	MELTON	MELTON
BAW BAW	BAWBAW	MILDURA	MILDURA
BENALLA	BENALLA, MANSFIELD, MURRINDINDI	MITCHELL	MITCHELL, STRATHBOGIE
BENDIGO	GREATER BENDIGO	MONASH	MONASH
BOROONDARA	BOROONDARA	MOONEE VALLEY	MOONEE VALLEY
BRIMBANK	BRIMBANK	MOORABOOL	GOLDEN PLAINS, HEPBURN, MOORABOOL
CAMPASPE	CAMPASPE	MORELAND	MORELAND
CARDINIA	CARDINIA	MORNINGTON PENINSULA	MORNINGTON PENINSULA
CASEY	CASEY	NILLUMBIK	NILLUMBIK
CENTRAL GOLDFIELDS	CENTRAL GOLDFIELDS, LODDON	NORTHERN GRAMPIANS	ARARAT, NORTHERN GRAMPIANS, YARRIAMIACK
GREATER DANDENONG	GREATER DANDENONG	PORT PHILLIP	PORT PHILLIP
DAREBIN	DAREBIN	SHEPPARTON	GREATER SHEPPARTON
EAST GIPPSLAND	EAST GIPPSLAND	SOUTHERN GRAMPIANS	GLENELG, SOUTHERN GRAMPIANS
FRANKSTON	FRANKSTON	STONNINGTON	STONNINGTON
GEELONG	GREATER GEELONG, QUEENSCLIFF	SURFCOAST	SURFCOAST, COLAC OTWAY
GLENEIRA	GLENEIRA, BAYSIDE	SWANHILL	BULOKE, GANNAWARRA, SWAN HILL
HOBSONS BAY	HOBSONSBAY	WANGARATTA	ALPINE, MOIRA, WANGARATTA
HORSHAM	HINDMARSH, HORSHAM, WESTWIMMERA	WARRNAMBOOL	CORANGAMITE, MOYNE, WARRNAMBOOL
HUME	HUME	WELLINGTON	WELLINGTON
KINGSTON	KINGSTON	WHITEHORSE	WHITEHORSE
KNOX	KNOX	WHITTLESEA	WHITTLESEA
LATROBE	LATROBE	WODONGA	INDIGO, TOWONG, WODONGA
MACEDON RANGES	MOUNT ALEXANDER, MACEDON RANGES	WYNDHAM	WYNDHAM
MANNINGHAM	MANNINGHAM	YARRA	YARRA
MARIBYRNONG	MARIBYRNONG	YARRA RANGES	YARRA RANGES

Useful Internet Sites

TAC Sites

- TAC Safety (Road Safety) www.tacsafety.com.au
- TAC How safe is your car www.howsafeisyourcar.com.au
- TAC Learners Log www.learnerslog.com.au
- TAC Motorcycle Safety Website www.spokes.com.au
- TAC Corporate site www.tac.vic.gov.au

Victorian Sites:

- VicRoads www.vicroads.vic.gov.au
- Victoria Police www.police.vic.gov.au
- Parliamentary Road Safety Committee www.parliament.vic.gov.au/rsc/
- ARRB Transport Research www.arrb.com.au
- RACV www.racv.com.au
- Monash University Accident Research Centre www.monash.edu.au/muarc
- Roadsafe www.roadsafe.org.au
- Cameras Save Lives www.camerassavelives.vic.gov.au

National and Interstate Sites:

- Australian Transport Safety Bureau www.atsb.gov.au
- Roads and Traffic Authority (NSW) www.rta.nsw.gov.au
- Queensland Transport - Road Safety transport.qld.gov.au/Home/Safety/Road
- Department of Transport (SA) www.transport.sa.gov.au/index.htm
- Main Roads Western Australia - Road Safety www.mrwa.wa.gov.au

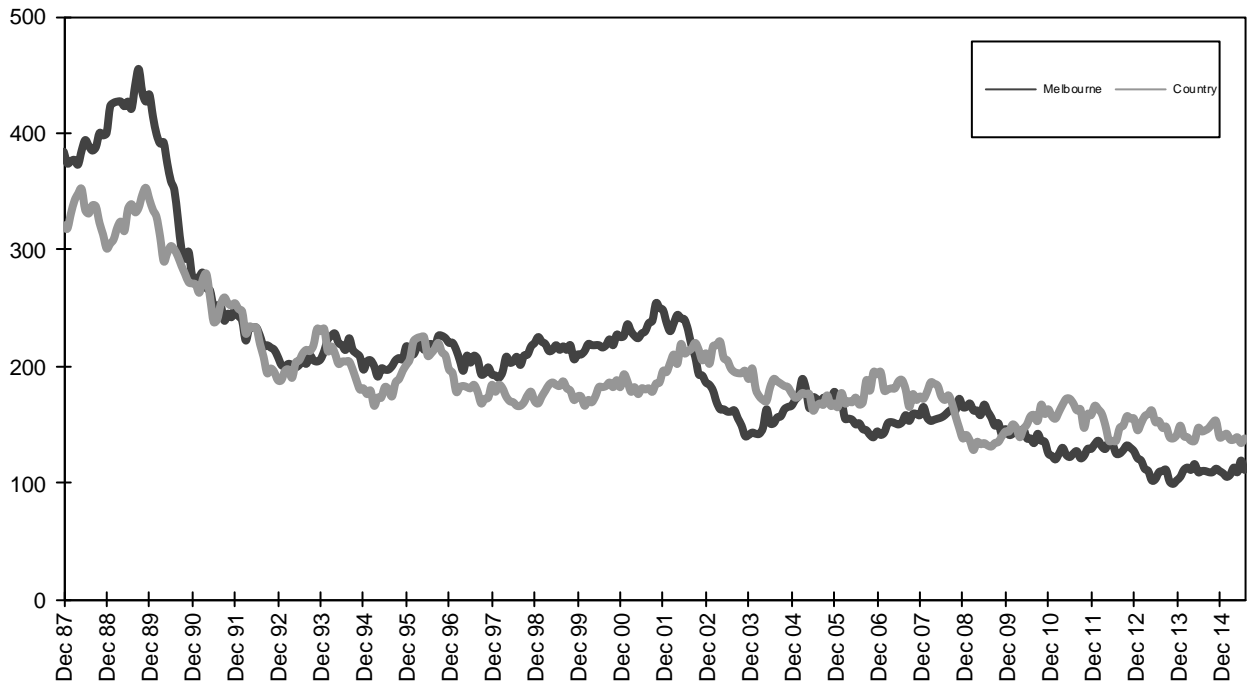
International Sites:

- National Highway Traffic Safety Admin (USA) www.nhtsa.dot.gov
- Swedish Road and Transport Institute (VTI) www.vti.se
- SWOV Institute for Road Safety Research www.swov.nl

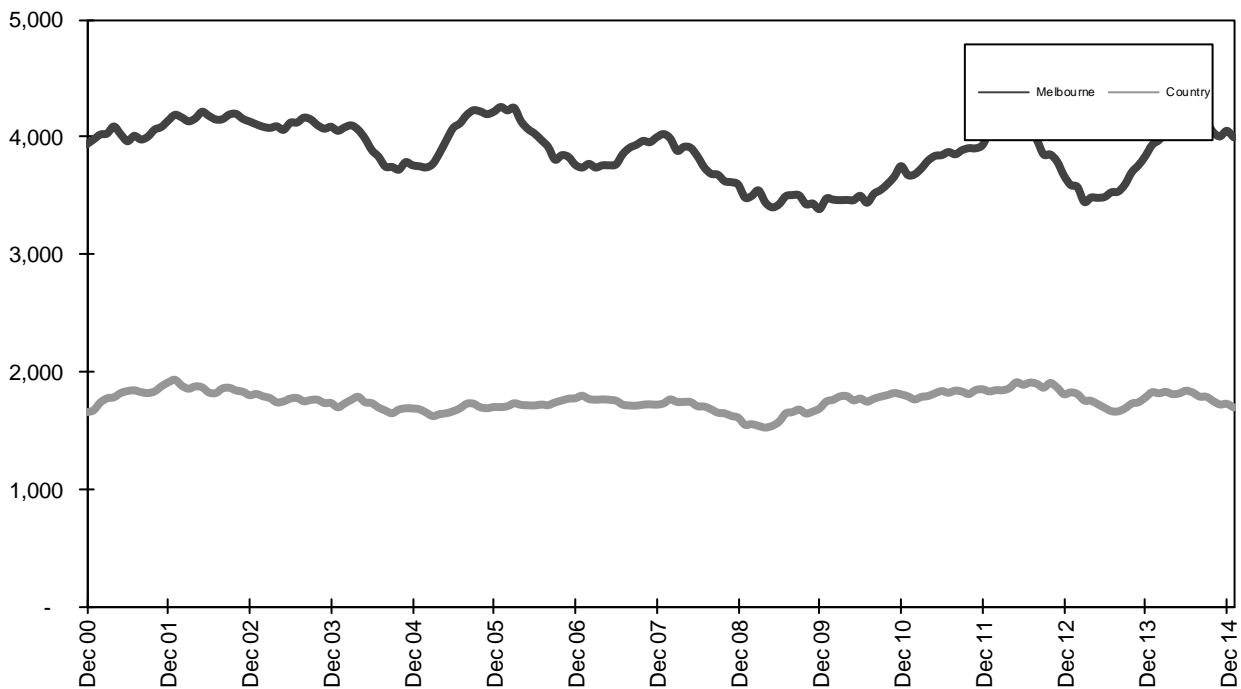
Related Sites:

- Australian Drug Foundation www.adf.org.au
- Amy Gillett Foundation www.amygillett.org.au

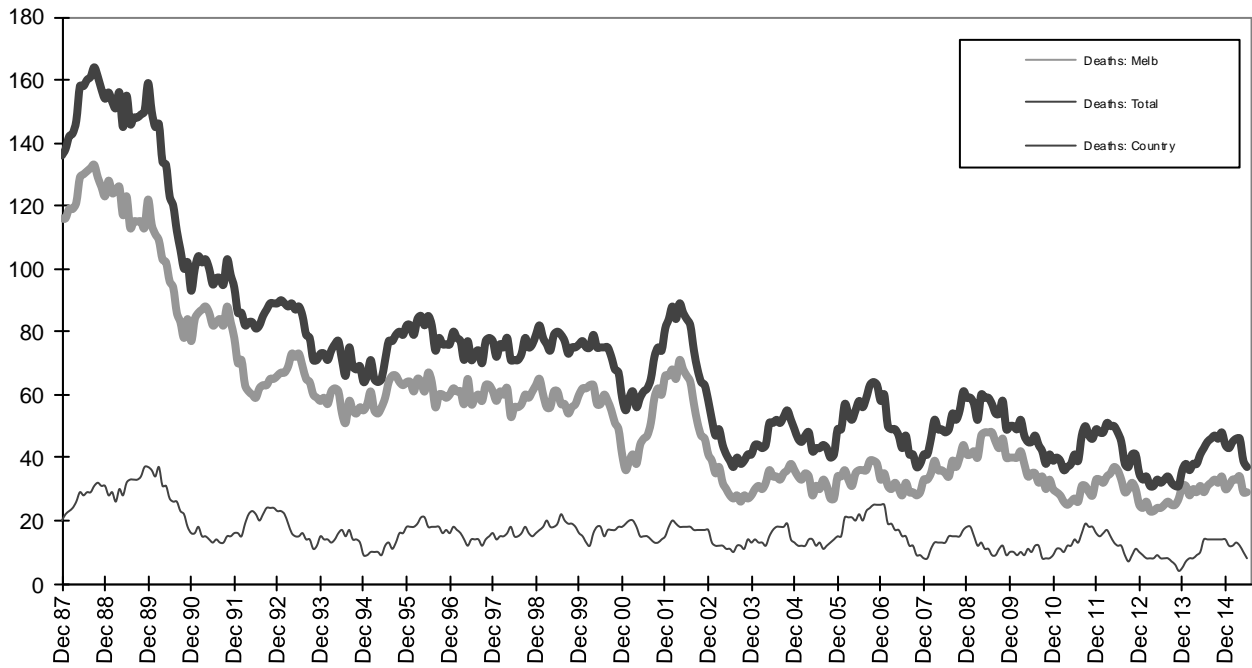
Figures



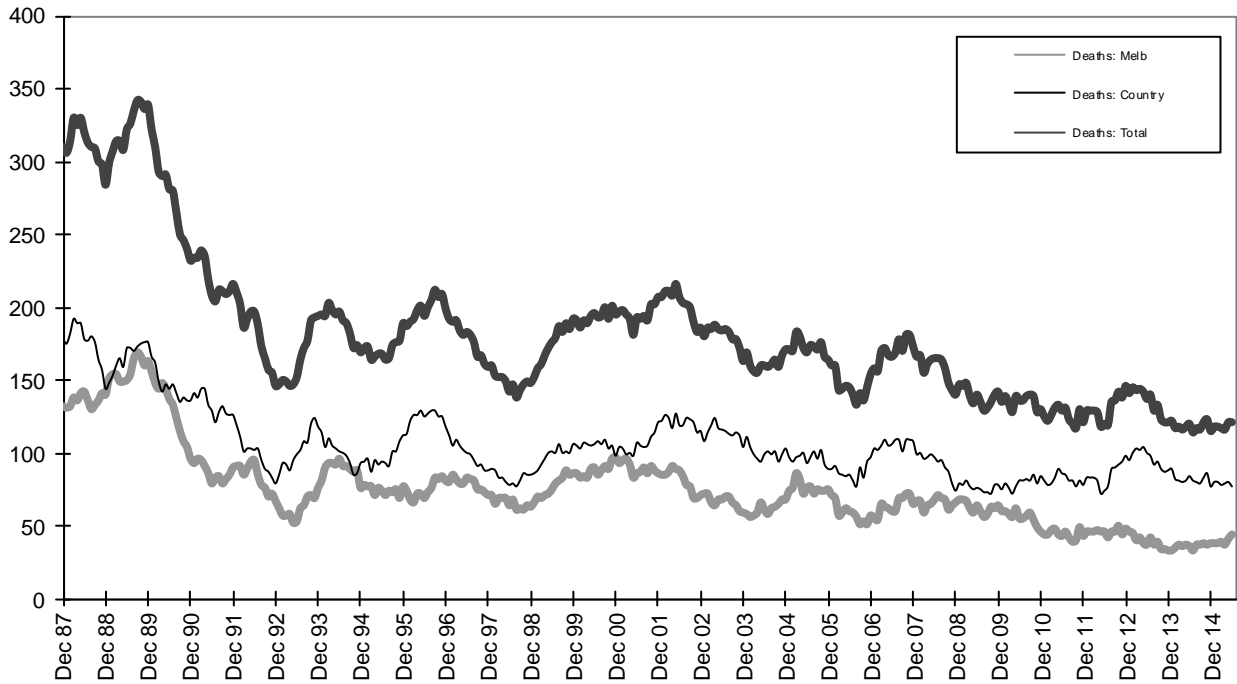
Graph 1a - Melbourne/country fatalities



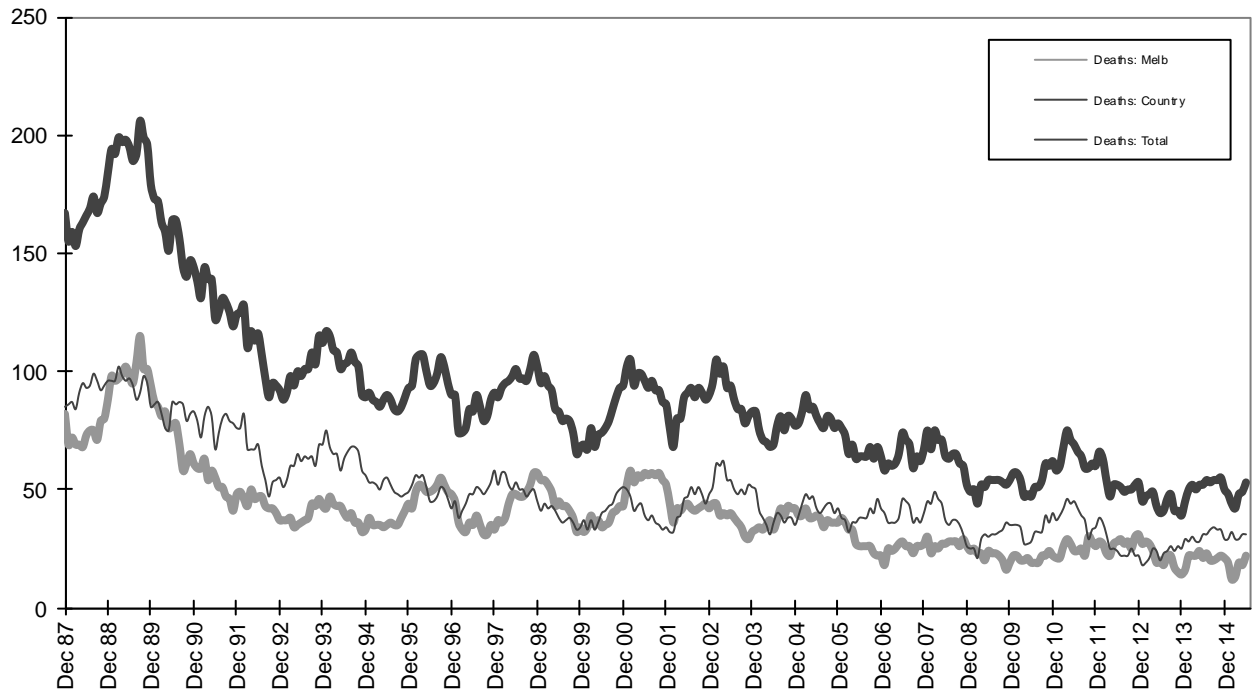
Graph 1b - Melbourne/country Claims involving an acute hospital admission



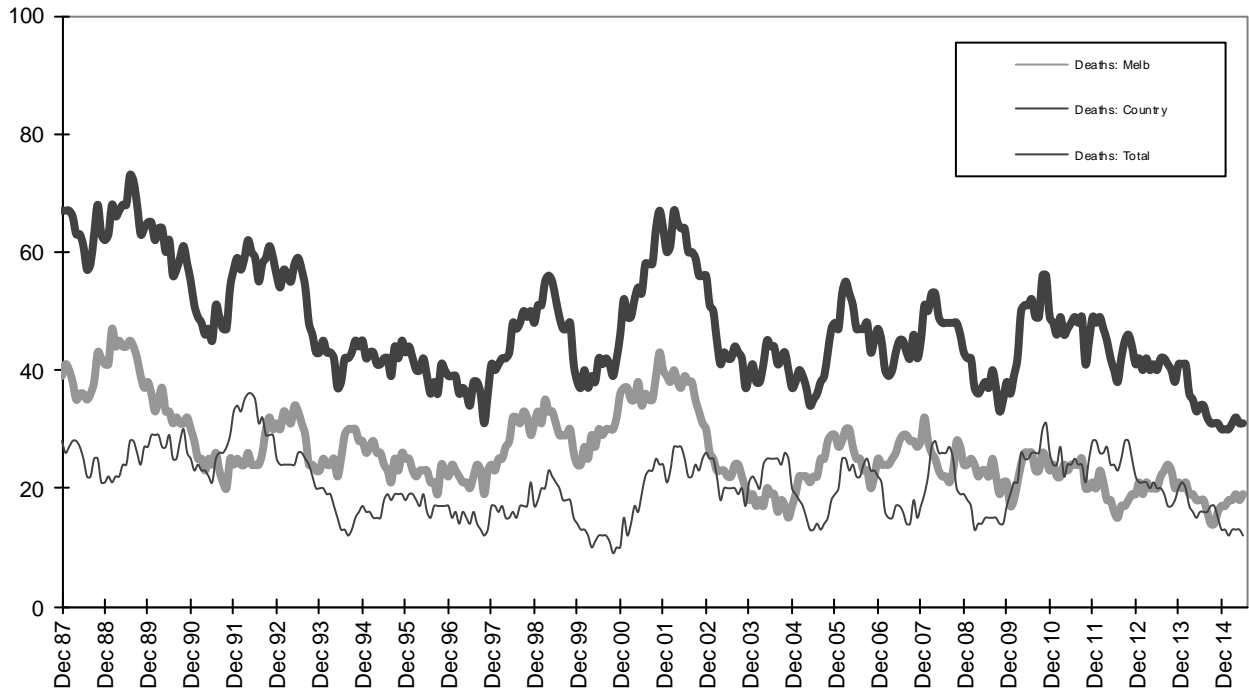
Graph 2a - Pedestrian fatalities (Melbourne/country)



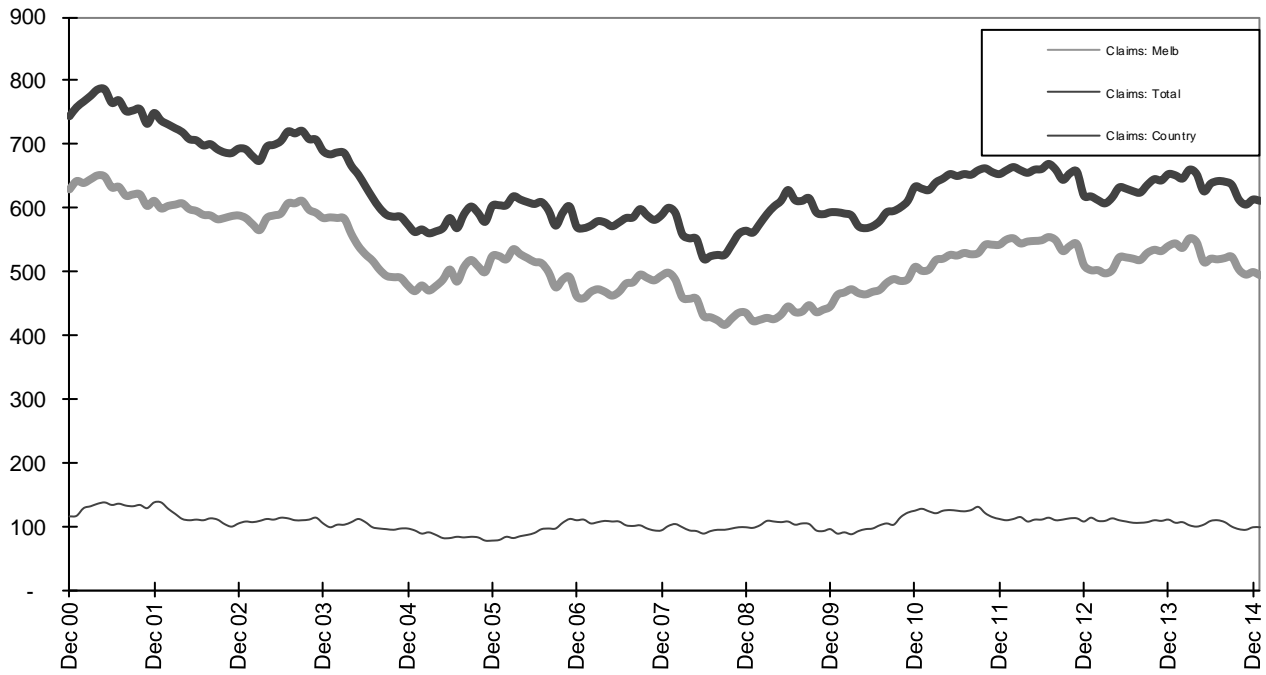
Graph 2b - Driver fatalities (Melbourne/country)



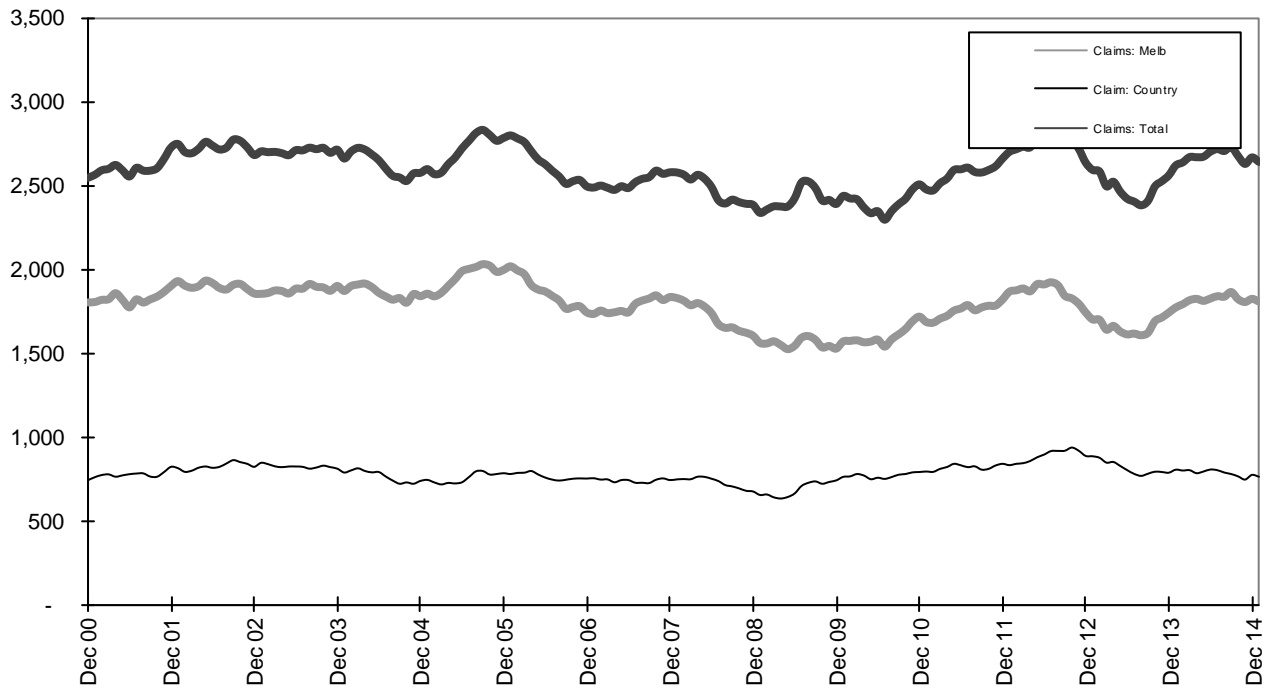
Graph 2c - Passenger fatalities (Melbourne/country)



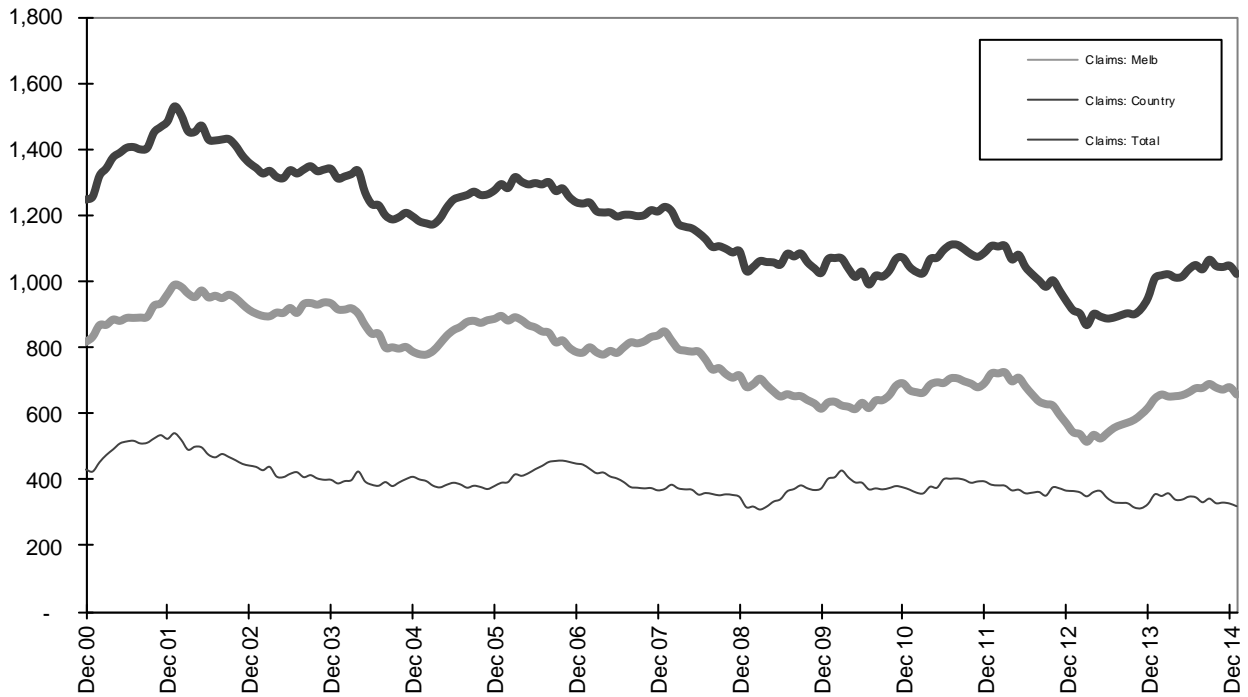
Graph 2d - Motorcyclist fatalities (Melbourne/country)



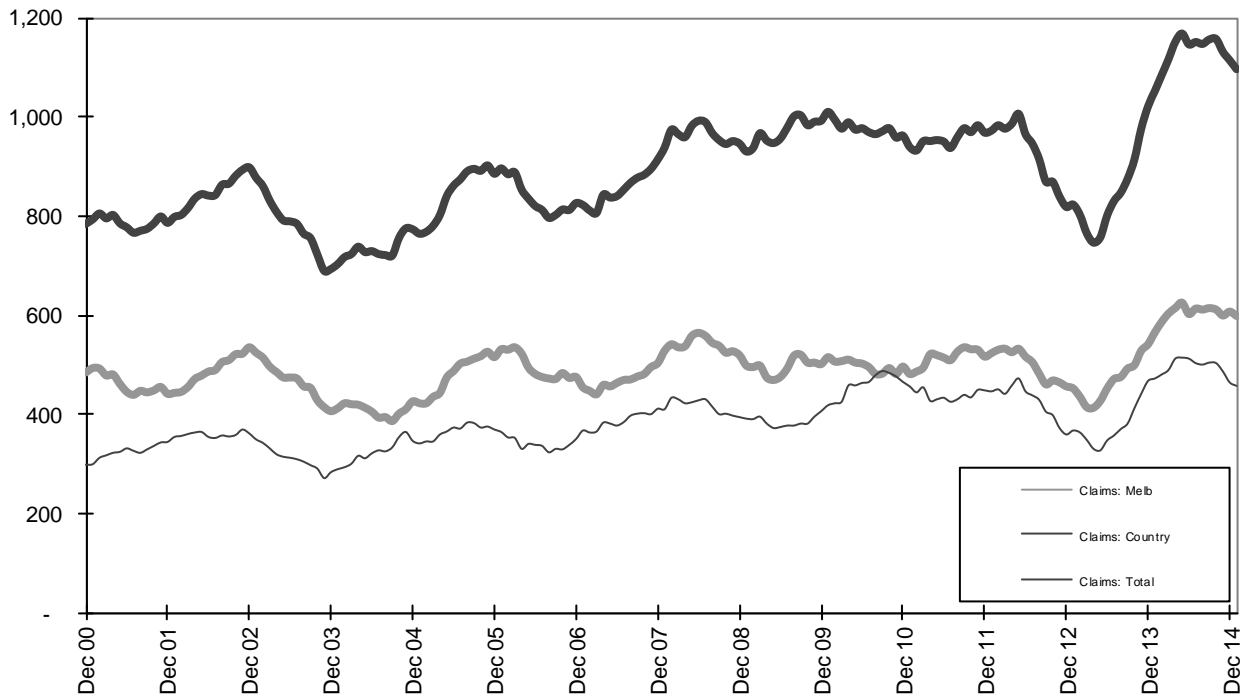
Graph 3a - Pedestrian Claims involving an acute hospital admission (Melbourne/country)



Graph 3b - Driver Claims involving an acute hospital admission (Melbourne/country)



Graph 3c - Passenger Claims involving an acute hospital admission (Melbourne/country)



Graph 3d - Motorcyclist Claims involving an acute hospital admission (Melbourne/country)