



# ROAD SAFETY STATISTICAL SUMMARY

## February 2013



**TRANSPORT  
ACCIDENT  
COMMISSION**

60 Brougham Street  
Geelong Vic 3220  
PO Box 742  
Geelong Vic 3220  
Ausdoc DX 216079 Geelong

Telephone 1300 654 329  
STD Toll Free 1800 332 556  
Fax: 03 9656 9300  
[www.tac.vic.gov.au](http://www.tac.vic.gov.au)  
ABN 22 033 947 623





## Contents

Status Report.....	4
Fatalities.....	4
Claims involving acute hospitalisation over 14 days and an acute hospital admission* .....	5
Fatalities: 12 months to February 2013 .....	6
Claims involving acute hospitalisation over 14 days: 12 months to August 2012 (claim acceptance date).....	8
Claims involving an acute hospital admission: 12 months to August 2012 (claim acceptance date).....	10
Fatalities: Victorian monthly totals since 1951 .....	12
Fatalities by Week (2007 to 2013).....	13
Alcohol Related Fatalities.....	14
The National Picture .....	15
Booze-Bus Random Breath Testing* .....	16
Mobile Safety Camera Data .....	16
Explanations and References .....	17
Useful Internet Sites.....	18
Figures .....	19

### Note about the data in this report

- All data provided in this report is the data most recently available at time of production. Fatalities, breath-test data and safety camera data are updated to the end of report month. A 6-month lag applies to TAC claims data, and a 2-month lag applies to alcohol related fatalities data.
- Note that reported data inclusive of February 2008 or February 2012 will have one extra day of exposure compared to non-leap years.

\*An acute hospital admission refers to a hospital admission that occurred within 7 days of accident.

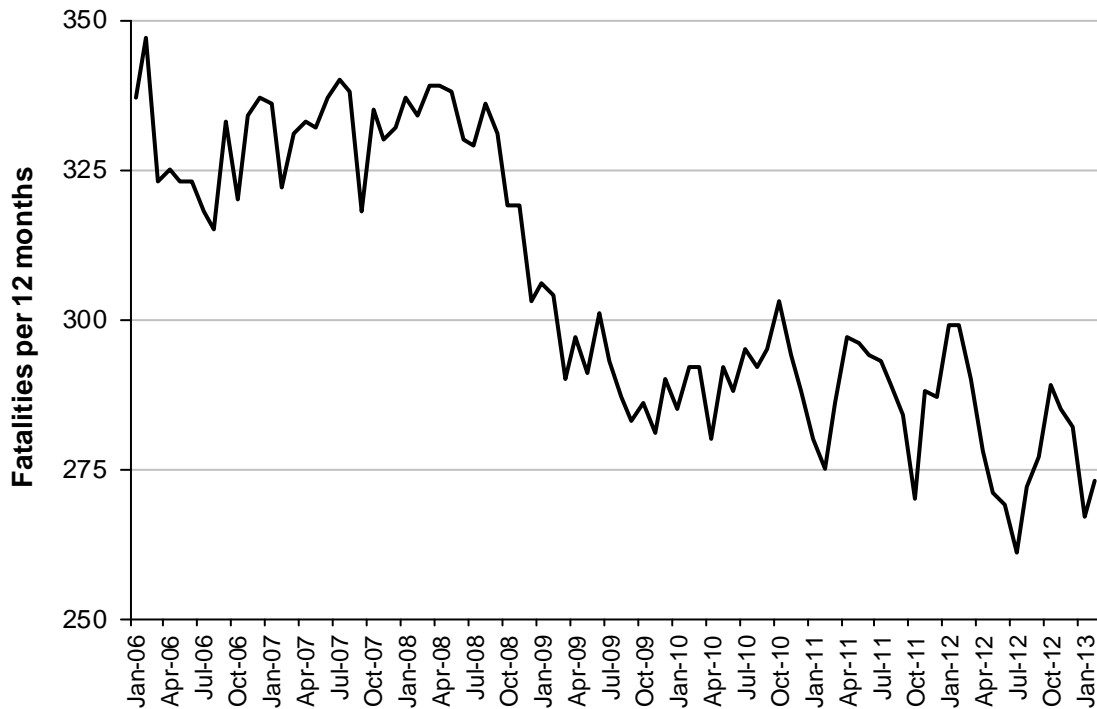
## Status Report

### Fatalities

- The rolling 12 month number of road fatalities in February 2013 stands at 273, 9% less than in 2012 (299).
- 15 people were fatally injured in January 2013 and 26 in February 2013 on Victorian roads. This compares to 30 in January 2012 and 20 in February 2012.

### Fatalities (year to date, to end February 2013)

Category	2013	2012	2011	2013 v 2012		2013 v 2011		5 Year Av
<b>Fatal Injuries (Rolling 12 Month Total)</b>								
Fatal (to February)	273	299	275	-26	(-9%)	-2	(-1%)	294
per 10,000 veh	0.63	0.70	0.66	-0.07	(-10%)	-0.03	(-5%)	0.73
per 100,000 pop	4.84	5.39	5.02	-0.55	(-10%)	-0.18	(-4%)	5.47
<b>Accidents (Rolling 12 Month Total)</b>								
Fatal (to February)	290	283	253	7	(2%)	37	(15%)	264
per 10,000 veh	0.67	0.67	0.61	0	(0%)	0.06	(10%)	0.66
per 100,000 pop	5.14	5.10	4.62	0.04	(1%)	0.52	(11%)	4.97



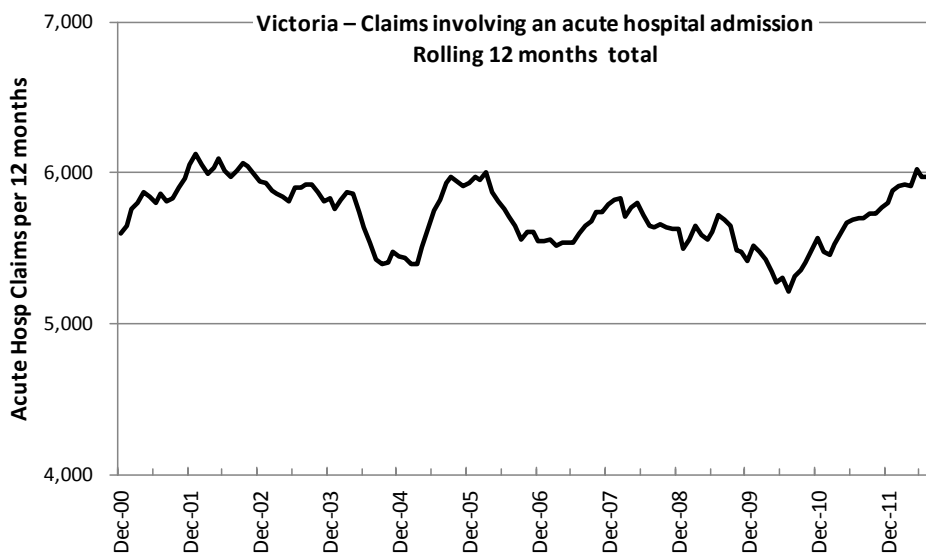
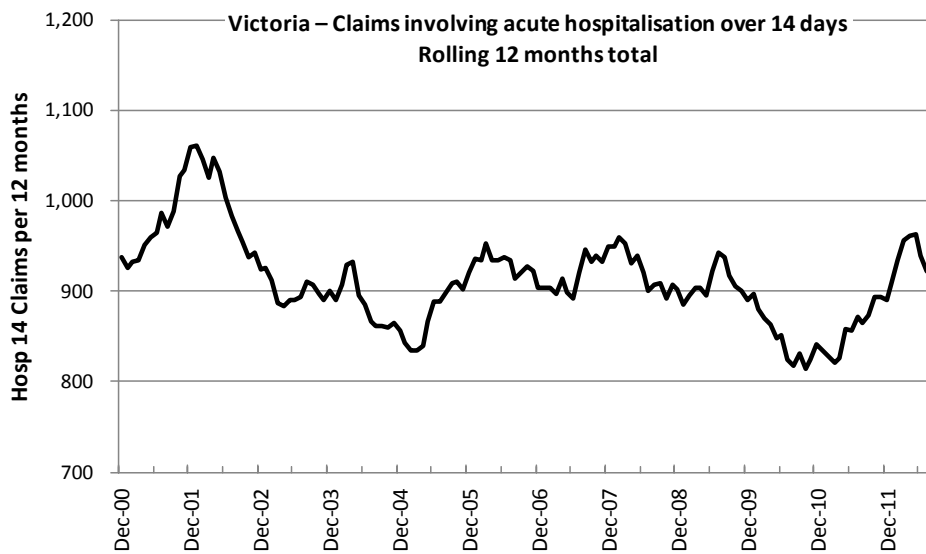
Victoria – Fatalities, rolling 12 months total

Note: Data is subject to revision as additional information about known accidents is received, and as new accident reports are received and processed.

**Claims involving acute hospitalisation over 14 days and an acute hospital admission\***

(by claim acceptance date - year to date, to midnight 31 August 2012)

Category	2012	2011	2010	2012 v 2011		2012 v 2010		5 Year Av
<b>Claims involving acute hospitalisation over 14 days (Rolling 12 Month Total)</b>								
Claims (to August)	916	865	817	51	(6%)	99	(12%)	888
per 10,000 veh	2.1	2.1	2.0	0	(0%)	0.1	(5%)	2.3
per 100,000 pop	16.4	15.7	15.0	0.7	(4%)	1.4	(9%)	16.9
<b>Claims involving an acute hospital admission (Rolling 12 Month Total)</b>								
Claims (to August)	5,878	5,703	5,311	175	(3%)	567	(11%)	5,573
per 10,000 veh	13.7	13.6	12.9	0.1	(1%)	0.8	(6%)	14.1
per 100,000 pop	105.4	103.5	97.6	1.9	(2%)	7.8	(8%)	105.3



Note: Data is subject to revision as additional information about known claims is received, and as new claims are received and processed.

\*An acute hospital admission refers to a hospital admission that occurred within 7 days of accident.

## Fatalities: 12 months to February 2013

Category	2013	2012	2011	2013 v 2012		2013 v 2011		5 Year Av
<b>Overview</b>								
Fatalities	273	299	275	-26	(-9%)	-2	(-1%)	294
Accidents	290	283	253	7	(2%)	37	(15%)	264
<b>Sex</b>								
Male	186	215	212	-29	(-13%)	-26	(-12%)	216
Female	86	84	63	2	(2%)	23	(37%)	85
<b>Roaduser</b>								
Bicyclist	4	10	8	-6	(-60%)	-4	(-50%)	39
Driver	148	129	122	19	(15%)	26	(21%)	703
Motorcyclist	40	49	46	-9	(-18%)	-6	(-13%)	45
Passenger	46	63	60	-17	(-27%)	-14	(-23%)	59
Pedestrian	35	48	39	-13	(-27%)	-4	(-10%)	48
<b>Location</b>								
Melbourne	122	136	120	-14	(-10%)	2	(2%)	144
Rural Victoria	151	163	155	-12	(-7%)	-4	(-3%)	156
<b>Agegroup</b>								
0-4	3	5	7	-2	(-40%)	-4	(-57%)	26
5-15	7	8	7	-1	(-13%)	0	(0%)	42
16-17	3	12	3	-9	(-75%)	0	(0%)	43
18-20	25	35	33	-10	(-29%)	-8	(-24%)	166
21-25	31	39	35	-8	(-21%)	-4	(-11%)	185
26-29	17	17	26	0	(0%)	-9	(-35%)	111
30-39	39	44	25	-5	(-11%)	14	(56%)	216
40-49	28	37	35	-9	(-24%)	-7	(-20%)	194
50-59	40	26	39	14	(54%)	1	(3%)	172
60-69	31	32	23	-1	(-3%)	8	(35%)	127
70+	46	44	42	2	(5%)	4	(10%)	222
<b>Alctime</b>								
High (Melb)	67	69	63	-2	(-3%)	4	(6%)	74
High (Rural)	67	83	86	-16	(-19%)	-19	(-22%)	75
High (Vic)	134	152	149	-18	(-12%)	-15	(-10%)	149
Low (Melb)	55	67	57	-12	(-18%)	-2	(-4%)	70
Low (Rural)	84	80	69	4	(5%)	15	(22%)	82
Low (Vic)	139	147	126	-8	(-5%)	13	(10%)	152
<b>Accident Type</b>								
<b>Intersection</b>								
Adjacent direction	27	32	30	-5	(-16%)	-3	(-10%)	130
Opposing direction	3	6	7	-3	(-50%)	-4	(-57%)	36
<b>Mid-block/other</b>								
Head on	42	41	34	1	(2%)	8	(24%)	193
Same direction	14	13	18	1	(8%)	-4	(-22%)	86
Manoeuvre/o'taking	16	16	16	0	(0%)	0	(0%)	79
On path	6	5	10	1	(20%)	-4	(-40%)	31
Single vehicle	123	129	116	-6	(-5%)	7	(6%)	651
Other (incl peds)	42	57	44	-15	(-26%)	-2	(-5%)	298

## Fatalities: 12 months to February 2013 – Continued

Category	2013	2012	2011	2013 v 2012		2013 v 2011		5 Year Av
<b>Police Service Area (based on Local Government Area (see p.13))</b>								
BALLARAT	3	6	10	-3	(-50%)	-7	(-70%)	6
BANYULE	1	3	3	-2	(-67%)	-2	(-67%)	2
BASS COAST	5	10	3	-5	(-50%)	2	(67%)	6
BAW BAW	7	6	12	1	(17%)	-5	(-42%)	7
BENALLA	10	6	10	4	(67%)	0	(0%)	8
BENDIGO	13	5	6	8	(160%)	7	(117%)	7
BOROONDARA	2	3	1	-1	(-33%)	1	(100%)	4
BRIMBANK	8	11	2	-3	(-27%)	6	(300%)	7
CAMPASPE	9	3	3	6	(200%)	6	(200%)	3
CARDINIA	5	10	8	-5	(-50%)	-3	(-38%)	6
CASEY	7	5	13	2	(40%)	-6	(-46%)	10
CENTRAL GOLDFIELDS	2	3	7	-1	(-33%)	-5	(-71%)	5
DAREBIN	4	3	3	1	(33%)	1	(33%)	4
EAST GIPPSLAND	7	8	7	-1	(-13%)	0	(0%)	10
FRANKSTON	4	4	4	0	(0%)	0	(0%)	5
GEELONG	16	12	11	4	(33%)	5	(45%)	8
GLEN EIRA	6	5	4	1	(20%)	2	(50%)	5
GREATER DANDENONG	6	5	2	1	(20%)	4	(200%)	6
HOBSONS BAY	0	1	1	-1	(-100%)	-1	(-100%)	3
HORSHAM	3	6	4	-3	(-50%)	-1	(-25%)	4
HUME	13	5	5	8	(160%)	8	(160%)	7
KINGSTON	7	5	2	2	(40%)	5	(250%)	5
KNOX	1	2	2	-1	(-50%)	-1	(-50%)	4
LA TROBE	5	7	5	-2	(-29%)	0	(0%)	6
MACEDON RANGES	5	5	5	0	(0%)	0	(0%)	6
MANNINGHAM	4	1	2	3	(300%)	2	(100%)	3
MARIBYRNONG	5	1	1	4	(400%)	4	(400%)	2
MAROONDAH	4	5	1	-1	(-20%)	3	(300%)	2
MELBOURNE	3	7	2	-4	(-57%)	1	(50%)	6
MELTON	4	7	7	-3	(-43%)	-3	(-43%)	6
MILDURA	2	3	4	-1	(-33%)	-2	(-50%)	4
MITCHELL	9	7	9	2	(29%)	0	(0%)	9
MONASH	5	3	4	2	(67%)	1	(25%)	6
MOONEE VALLEY	1	1	2	0	(0%)	-1	(-50%)	3
MOORABOOL	9	12	8	-3	(-25%)	1	(13%)	7
MORELAND	2	4	6	-2	(-50%)	-4	(-67%)	4
MORNINGTON PENINSULA	5	7	11	-2	(-29%)	-6	(-55%)	10
NILLUMBIK	2	2	2	0	(0%)	0	(0%)	2
NORTHERN GRAMPIANS	5	4	4	1	(25%)	1	(25%)	3
PORT PHILLIP	0	2	3	-2	(-100%)	-3	(-100%)	2
SHEPPARTON	12	5	4	7	(140%)	8	(200%)	6
SOUTHERN GRAMPIANS	5	6	5	-1	(-17%)	0	(0%)	6
STONNINGTON	1	2	1	-1	(-50%)	0	(0%)	2
SURF COAST	3	11	8	-8	(-73%)	-5	(-63%)	8
SWAN HILL	5	7	4	-2	(-29%)	1	(25%)	9
WANGARATTA	7	14	13	-7	(-50%)	-6	(-46%)	13
WARRNAMBOOL	3	7	5	-4	(-57%)	-2	(-40%)	6
WELLINGTON	3	7	4	-4	(-57%)	-1	(-25%)	6
WHITEHORSE	2	4	7	-2	(-50%)	-5	(-71%)	4
WHITTLESEA	5	7	8	-2	(-29%)	-3	(-38%)	7
WODONGA	2	3	4	-1	(-33%)	-2	(-50%)	3
WYNDHAM	10	9	3	1	(11%)	7	(233%)	5
YARRA	1	2	5	-1	(-50%)	-4	(-80%)	3
YARRA RANGES	5	10	5	-5	(-50%)	0	(0%)	10

## Claims involving acute hospitalisation over 14 days: 12 months to August 2012 (claim acceptance date)

Category	2012	2011	2010	2012 v 2011	2012 v 2010	5 Year Av
<b>Overview</b>						
Claims	916	866	817	50 (6%)	99 (12%)	895
<b>Sex</b>						
Male	522	528	508	-6 (-1%)	14 (3%)	544
Female	394	337	309	57 (17%)	85 (28%)	351
<b>Roaduser</b>						
Driver	354	329	307	25 (8%)	47 (15%)	337
Passenger	146	145	131	1 (1%)	15 (11%)	160
Motorcyclist	164	166	179	-2 (-1%)	-15 (-8%)	167
Pedestrian	185	174	152	11 (6%)	33 (22%)	169
Cyclist	41	39	37	2 (5%)	4 (11%)	37
Train/Tram	9	4	7	5 (125%)	2 (29%)	4
<b>Location</b>						
Melbourne	608	540	521	68 (13%)	87 (17%)	565
Rural Victoria	304	310	291	-6 (-2%)	13 (4%)	301
<b>Agegroup</b>						
0-4	2	6	6	-4 (-67%)	-4 (-67%)	4
5-15	14	15	18	-1 (-7%)	-4 (-22%)	16
16-17	24	20	18	4 (20%)	6 (33%)	24
18-20	53	55	59	-2 (-4%)	-6 (-10%)	68
21-25	81	89	69	-8 (-9%)	12 (17%)	94
26-29	59	55	51	4 (7%)	8 (16%)	54
30-39	113	108	110	5 (5%)	3 (3%)	122
40-49	120	117	114	3 (3%)	6 (5%)	117
50-59	103	101	96	2 (2%)	7 (7%)	101
60-69	119	98	75	21 (21%)	44 (59%)	92
70+	228	202	201	26 (13%)	27 (13%)	202
<b>Alctime</b>						
High (Melb)	268	243	243	25 (10%)	25 (10%)	255
High (Rural)	122	134	134	-12 (-9%)	-12 (-9%)	128
High (Vic)	390	390	390	0 (0%)	0 (0%)	382
Low (Melb)	340	297	297	43 (14%)	43 (14%)	310
Low (Rural)	182	176	176	6 (3%)	6 (3%)	173
Low (Vic)	522	522	522	0 (0%)	0 (0%)	483
<b>Accident Type</b>						
<b>Intersection</b>						
Adjacent direction	118	114	111	4 (4%)	7 (6%)	120
Opposing direction	64	70	50	-6 (-9%)	14 (28%)	61
<b>Mid-block/other</b>						
Head on	76	89	63	-13 (-15%)	13 (21%)	78
Same direction	85	96	93	-11 (-11%)	-8 (-9%)	79
Manoeuvre/o'taking	56	49	49	7 (14%)	7 (14%)	51
On path	23	18	34	5 (28%)	-11 (-32%)	24
Single vehicle	261	234	231	27 (12%)	30 (13%)	266
Other (incl peds)	233	196	186	37 (19%)	47 (25%)	192

Note: excludes rejected claims and claims for interstate crashes



Claims involving acute hospitalisation over 14 days: 12 months to August 2012 (claim acceptance date) -  
Continued

Category	2012	2011	2010	2012 v 2011		2012 v 2010		5 Year Av
<b>Police Service Area (based on Local Government Area (see p.13))</b>								
BALLARAT	9	21	10	-12	(-57%)	-1	(-10%)	13
BANYULE	10	9	12	1	(11%)	-2	(-17%)	10
BASS COAST	12	20	20	-8	(-40%)	-8	(-40%)	20
BAW BAW	16	9	7	7	(78%)	9	(129%)	6
BENALLA	13	20	19	-7	(-35%)	-6	(-32%)	16
BENDIGO	18	18	18	0	(0%)	0	(0%)	13
BOROONDARA	30	19	22	11	(58%)	8	(36%)	21
BRIMBANK	36	18	13	18	(100%)	23	(177%)	20
CAMPASPE	4	5	4	-1	(-20%)	0	(0%)	6
CARDINIA	14	18	16	-4	(-22%)	-2	(-13%)	17
CASEY	19	27	33	-8	(-30%)	-14	(-42%)	33
CENTRAL GOLDFIELDS	1	3	0	-2	(-67%)	1		3
DAREBIN	17	13	21	4	(31%)	-4	(-19%)	19
EAST GIPPSLAND	19	14	12	5	(36%)	7	(58%)	15
FRANKSTON	14	19	16	-5	(-26%)	-2	(-13%)	19
GEELONG	29	25	20	4	(16%)	9	(45%)	30
GLEN EIRA	24	37	30	-13	(-35%)	-6	(-20%)	31
GREATER DANDENONG	32	22	30	10	(45%)	2	(7%)	27
HOBSONS BAY	10	8	9	2	(25%)	1	(11%)	10
HORSHAM	13	7	10	6	(86%)	3	(30%)	6
HUME	28	22	23	6	(27%)	5	(22%)	27
KINGSTON	18	17	19	1	(6%)	-1	(-5%)	18
KNOX	19	15	11	4	(27%)	8	(73%)	16
LA TROBE	11	24	9	-13	(-54%)	2	(22%)	14
MACEDON RANGES	14	15	20	-1	(-7%)	-6	(-30%)	15
MANNINGHAM	19	15	7	4	(27%)	12	(171%)	12
MARIBYRNONG	14	17	11	-3	(-18%)	3	(27%)	14
MAROONDAH	8	14	8	-6	(-43%)	0	(0%)	12
MELBOURNE	29	28	29	1	(4%)	0	(0%)	25
MELTON	14	11	9	3	(27%)	5	(56%)	9
MILDURA	12	6	4	6	(100%)	8	(200%)	5
MITCHELL	20	13	17	7	(54%)	3	(18%)	15
MONASH	20	22	23	-2	(-9%)	-3	(-13%)	26
MOONEE VALLEY	21	15	11	6	(40%)	10	(91%)	15
MOORABOOL	11	14	14	-3	(-21%)	-3	(-21%)	16
MORELAND	25	19	16	6	(32%)	9	(56%)	21
MORNINGTON PENINSULA	39	28	22	11	(39%)	17	(77%)	26
NILLUMBIK	6	6	2	0	(0%)	4	(200%)	5
NORTHERN GRAMPPIANS	5	5	4	0	(0%)	1	(25%)	6
PORT PHILLIP	17	8	11	9	(113%)	6	(55%)	15
SHEPPARTON	11	8	13	3	(38%)	-2	(-15%)	15
SOUTHERN GRAMPPIANS	8	9	12	-1	(-11%)	-4	(-33%)	8
STONNINGTON	16	21	16	-5	(-24%)	0	(0%)	18
SURF COAST	8	15	11	-7	(-47%)	-3	(-27%)	12
SWAN HILL	3	4	4	-1	(-25%)	-1	(-25%)	7
WANGARATTA	15	19	18	-4	(-21%)	-3	(-17%)	17
WARRNAMBOOL	19	12	11	7	(58%)	8	(73%)	11
WELLINGTON	8	10	15	-2	(-20%)	-7	(-47%)	12
WHITEHORSE	22	23	25	-1	(-4%)	-3	(-12%)	23
WHITTLESEA	30	11	21	19	(173%)	9	(43%)	16
WODONGA	14	4	9	10	(250%)	5	(56%)	11
WYNDHAM	21	16	13	5	(31%)	8	(62%)	16
YARRA	9	13	13	-4	(-31%)	-4	(-31%)	12
YARRA RANGES	27	29	29	-2	(-7%)	-2	(-7%)	33

Note: excludes rejected claims and claims for interstate crashes

## Claims involving an acute hospital admission: 12 months to August 2012 (claim acceptance date)

Category	2012	2011	2010	2012 v 2011	2012 v 2010	5 Year Av		
<b>Overview</b>								
Claims	5,878	5,705	5,311	173	(3%)	567	(11%)	5,597
<b>Sex</b>								
Male	3,319	3,272	3,081	47	(1%)	238	(8%)	3,248
Female	2,559	2,431	2,227	128	(5%)	332	(15%)	2,348
<b>Roaduser</b>								
Driver	2,816	2,576	2,347	240	(9%)	469	(20%)	2,474
Passenger	991	1,108	1,015	-117	(-11%)	-24	(-2%)	1,100
Motorcyclist	906	957	965	-51	(-5%)	-59	(-6%)	951
Pedestrian	656	652	595	4	(1%)	61	(10%)	594
Cyclist	367	332	331	35	(11%)	36	(11%)	314
Train/Tram	27	19	21	8	(42%)	6	(29%)	15
<b>Location</b>								
Melbourne	3,941	3,829	3,513	112	(3%)	428	(12%)	3,687
Rural Victoria	1,862	1,819	1,768	43	(2%)	94	(5%)	1,726
<b>Agegroup</b>								
0-4	46	53	44	-7	(-13%)	2	(5%)	50
5-15	182	209	216	-27	(-13%)	-34	(-16%)	220
16-17	130	127	133	3	(2%)	-3	(-2%)	155
18-20	535	569	531	-34	(-6%)	4	(1%)	585
21-25	765	720	634	45	(6%)	131	(21%)	720
26-29	452	410	424	42	(10%)	28	(7%)	429
30-39	901	900	881	1	(0%)	20	(2%)	936
40-49	855	867	772	-12	(-1%)	83	(11%)	824
50-59	747	700	660	47	(7%)	87	(13%)	645
60-69	535	501	404	34	(7%)	131	(32%)	436
70+	730	649	612	81	(12%)	118	(19%)	597
<b>Alctime</b>								
High (Melb)	1,791	1,777	1,535	14	(1%)	256	(17%)	1,688
High (Rural)	788	825	773	-37	(-4%)	15	(2%)	760
High (Vic)	2,579	2,602	2,308	-23	(-1%)	271	(12%)	2,449
Low (Melb)	2,150	2,052	1,978	98	(5%)	172	(9%)	1,999
Low (Rural)	1,074	994	995	80	(8%)	79	(8%)	965
Low (Vic)	3,224	3,046	2,973	178	(6%)	251	(8%)	2,964
<b>Accident Type</b>								
<b>Intersection</b>								
Adjacent direction	881	888	782	-7	(-1%)	99	(13%)	856
Opposing direction	495	466	429	29	(6%)	66	(15%)	445
<b>Mid-block/other</b>								
Head on	321	360	288	-39	(-11%)	33	(11%)	325
Same direction	922	962	815	-40	(-4%)	107	(13%)	820
Manoeuvre/o'taking	315	326	318	-11	(-3%)	-3	(-1%)	315
On path	232	185	221	47	(25%)	11	(5%)	199
Single vehicle	1,602	1,596	1,592	6	(0%)	10	(1%)	1,651
Other (incl peds)	1,110	922	866	188	(20%)	244	(28%)	839

Note: excludes rejected claims and claims for interstate crashes

## Claims involving an acute hospital admission: 12 months to August 2012 (claim acceptance date) - Continued

Category	2012	2011	2010	2012 v 2011		2012 v 2010		5 Year Av
<b>Police Service Area (based on Local Government Area (see p.13))</b>								
BALLARAT	91	110	82	-19	(-17%)	9	(11%)	86
BANYULE	74	54	52	20	(37%)	22	(42%)	62
BASS COAST	82	78	84	4	(5%)	-2	(-2%)	84
BAW BAW	72	50	48	22	(44%)	24	(50%)	47
BENALLA	96	101	121	-5	(-5%)	-25	(-21%)	101
BENDIGO	127	96	77	31	(32%)	50	(65%)	79
BOROONDARA	138	133	141	5	(4%)	-3	(-2%)	134
BRIMBANK	188	142	97	46	(32%)	91	(94%)	142
CAMPASPE	44	33	41	11	(33%)	3	(7%)	38
CARDINIA	86	110	79	-24	(-22%)	7	(9%)	89
CASEY	231	244	228	-13	(-5%)	3	(1%)	230
CENTRAL GOLDFIELDS	7	6	5	1	(17%)	2	(40%)	11
DAREBIN	98	103	111	-5	(-5%)	-13	(-12%)	106
EAST GIPPSLAND	87	64	58	23	(36%)	29	(50%)	54
FRANKSTON	141	153	127	-12	(-8%)	14	(11%)	136
GEELONG	245	232	216	13	(6%)	29	(13%)	230
GLEN EIRA	174	172	169	2	(1%)	5	(3%)	161
GREATER DANDENONG	200	213	174	-13	(-6%)	26	(15%)	178
HOBSONS BAY	77	48	67	29	(60%)	10	(15%)	65
HORSHAM	38	45	29	-7	(-16%)	9	(31%)	31
HUME	141	145	146	-4	(-3%)	-5	(-3%)	156
KINGSTON	136	126	125	10	(8%)	11	(9%)	129
KNOX	117	132	111	-15	(-11%)	6	(5%)	127
LA TROBE	61	79	62	-18	(-23%)	-1	(-2%)	61
MACEDON RANGES	71	84	92	-13	(-15%)	-21	(-23%)	77
MANNINGHAM	75	60	71	15	(25%)	4	(6%)	71
MARIBYRNONG	83	97	56	-14	(-14%)	27	(48%)	75
MAROONDAH	65	77	74	-12	(-16%)	-9	(-12%)	72
MELBOURNE	250	223	200	27	(12%)	50	(25%)	189
MELTON	72	75	68	-3	(-4%)	4	(6%)	64
MILDURA	42	36	27	6	(17%)	15	(56%)	33
MITCHELL	95	68	86	27	(40%)	9	(10%)	75
MONASH	187	152	160	35	(23%)	27	(17%)	168
MOONEE VALLEY	118	90	90	28	(31%)	28	(31%)	102
MOORABOOL	99	89	78	10	(11%)	21	(27%)	92
MORELAND	149	143	128	6	(4%)	21	(16%)	137
MORNINGTON PENINSULA	177	178	138	-1	(-1%)	39	(28%)	164
NILLUMBIK	39	43	33	-4	(-9%)	6	(18%)	34
NORTHERN GRAMPPIANS	32	37	26	-5	(-14%)	6	(23%)	36
PORT PHILLIP	114	112	95	2	(2%)	19	(20%)	120
SHEPPARTON	75	60	59	15	(25%)	16	(27%)	74
SOUTHERN GRAMPPIANS	43	50	40	-7	(-14%)	3	(8%)	40
STONNINGTON	113	129	115	-16	(-12%)	-2	(-2%)	115
SURF COAST	55	86	75	-31	(-36%)	-20	(-27%)	81
SWAN HILL	23	23	27	0	(0%)	-4	(-15%)	34
WANGARATTA	100	98	110	2	(2%)	-10	(-9%)	103
WARRNAMBOOL	94	99	115	-5	(-5%)	-21	(-18%)	81
WELLINGTON	71	88	74	-17	(-19%)	-3	(-4%)	68
WHITEHORSE	123	130	120	-7	(-5%)	3	(2%)	127
WHITTLESEA	151	105	133	46	(44%)	18	(14%)	115
WODONGA	65	53	68	12	(23%)	-3	(-4%)	61
WYNDHAM	139	149	100	-10	(-7%)	39	(39%)	121
YARRA	111	99	116	12	(12%)	-5	(-4%)	99
YARRA RANGES	174	192	189	-18	(-9%)	-15	(-8%)	198

Note: excludes rejected claims and claims for interstate crashes

## Fatalities: Victorian monthly totals since 1951

Year	Jan	Feb	Mar	Apr	May	Jun	Jul	Aug	Sep	Oct	Nov	Dec	Totals
1951							61	59	52	38	29	41	
1952	45	40	54	61	54	69	67	55	44	44	31	20	584
1953	23	28	54	58	49	42	50	37	44	27	36	32	480
1954	44	42	28	60	55	36	63	33	25	52	30	41	509
1955	44	36	45	55	48	56	64	44	44	32	40	40	548
1956	34	48	51	67	53	65	71	47	39	39	44	48	606
1957	50	41	46	58	52	54	57	53	51	46	32	49	589
1958	50	38	42	58	54	41	54	53	57	40	57	52	596
1959	50	57	61	50	75	55	42	48	52	55	63	63	671
1960	49	53	57	76	70	70	67	62	61	77	52	66	760
1961	63	57	68	74	58	68	78	82	59	62	60	65	794
1962	65	41	76	78	72	80	70	77	62	53	64	70	808
1963	67	56	65	85	66	68	77	55	55	58	61	67	780
1964	73	71	78	71	83	89	80	89	67	66	62	75	904
1965	63	64	86	88	80	87	79	69	81	77	68	87	929
1966	75	59	75	103	74	86	87	80	75	66	90	85	955
1967	61	79	91	97	81	71	59	67	70	68	60	83	887
1968	70	78	86	78	73	76	73	77	72	80	81	105	949
1969	79	68	79	87	86	77	87	83	87	83	94	101	1,011
1970	85	84	106	80	87	88	110	106	78	95	68	74	1,061
1971	83	75	77	68	76	86	85	72	78	73	74	76	923
1972	61	62	75	82	75	71	98	85	83	62	80	81	915
1973	75	75	95	85	64	66	61	85	89	88	66	86	935
1974	56	62	81	60	70	73	67	62	53	70	80	72	806
1975	67	65	87	73	97	94	57	75	69	66	71	89	910
1976	79	78	88	78	69	79	60	70	82	78	77	100	938
1977	65	71	89	79	65	79	70	91	68	74	96	107	954
1978	75	54	95	63	64	69	68	77	65	84	83	72	869
1979	63	60	86	75	45	64	66	75	69	79	72	93	847
1980	48	55	66	59	47	56	60	53	45	58	61	49	657
1981	69	60	58	61	74	65	61	63	68	71	59	57	766
1982	55	53	59	59	67	45	47	71	53	69	65	66	709
1983	42	59	53	63	62	61	65	51	59	43	54	52	664
1984	65	48	58	50	56	48	46	50	71	53	55	58	658
1985	56	47	50	65	75	50	51	50	58	61	56	64	683
1986	56	50	70	69	59	53	42	54	54	52	59	51	669
1987	62	43	57	52	63	59	62	49	62	61	55	80	705
1988	49	58	69	54	79	50	54	52	64	59	43	70	701
1989	76	65	80	59	67	73	52	65	82	50	41	66	776
1990	48	44	55	39	56	64	41	34	48	35	40	44	548
1991	45	39	70	30	34	29	44	47	41	36	35	53	503
1992	34	33	34	47	33	29	23	27	28	38	30	40	396
1993	27	40	37	39	44	33	33	27	34	39	43	40	436
1994	36	31	44	35	27	33	29	37	17	27	32	30	378
1995	38	35	26	33	34	41	27	34	34	32	38	46	418
1996	40	47	35	38	28	29	30	35	49	24	33	30	418
1997	36	25	30	30	40	22	39	26	26	29	39	35	377
1998	29	29	32	36	31	22	40	19	37	36	49	30	390
1999	32	31	35	35	34	24	35	26	28	38	29	37	384
2000	32	26	46	32	39	32	33	29	36	29	44	29	407
2001	44	30	31	32	31	41	34	37	35	51	41	37	444
2002	32	31	45	31	45	32	27	25	31	30	31	37	397
2003	21	41	36	28	31	28	20	23	23	24	24	31	330
2004	32	22	30	30	46	28	27	26	22	28	25	27	343
2005	33	27	47	21	29	23	30	25	25	33	17	36	346
2006	24	37	23	23	27	23	25	22	43	20	31	39	337
2007	23	23	32	25	26	28	28	20	23	37	26	41	332
2008	28	20	37	25	25	20	27	27	18	25	26	25	303
2009	31	18	23	32	19	30	19	21	14	28	21	34	290
2010	26	25	23	20	31	26	26	18	17	36	12	28	288
2011	18	20	34	31	30	24	25	14	12	22	30	27	287
2012	30	20	25	19	23	22	18	25	17	33	25	22	282
2013	15	26											
<b>Ave</b>	<b>49</b>	<b>47</b>	<b>57</b>	<b>55</b>	<b>54</b>	<b>52</b>	<b>52</b>	<b>51</b>	<b>50</b>	<b>51</b>	<b>50</b>	<b>56</b>	<b>625</b>
<b>Max</b>	<b>85</b>	<b>84</b>	<b>106</b>	<b>103</b>	<b>97</b>	<b>94</b>	<b>110</b>	<b>106</b>	<b>89</b>	<b>95</b>	<b>96</b>	<b>107</b>	<b>1,061</b>
<b>Min</b>	<b>15</b>	<b>18</b>	<b>23</b>	<b>19</b>	<b>19</b>	<b>20</b>	<b>19</b>	<b>14</b>	<b>12</b>	<b>20</b>	<b>12</b>	<b>20</b>	<b>282</b>

**Fatalities by Week (2007 to 2013)**

<b>Week Ending</b>	<b>2007</b>	<b>2008</b>	<b>2009</b>	<b>2010</b>	<b>2011</b>	<b>2012</b>	<b>2013</b>	<b>Cumulative 2013</b>	<b>% Change 2013-2012</b>	<b>12 Month Moving Total</b>
6-Jan	3	1	3	1	2	1	2	2	0%	283
13-Jan	2	8	11	6	1	3	3	5	67%	283
20-Jan	7	5	6	1	6	9	6	11	22%	280
27-Jan	5	4	2	9	4	7	4	15	15%	277
3-Feb	5	8	8	6	4	9	6	21	24%	274
10-Feb	7	5	1	9	8	4	7	28	12%	277
17-Feb	4	4	10	5	3	2	5	33	18%	280
24-Feb	10	4	3	8	5	10	6	39	18%	276
3-Mar	3	8	5	4	4	4	3	42	14%	275
10-Mar	9	8	2	6	8	1				
17-Mar	9	5	6	5	6	4				
24-Mar	3	13	3	4	9	12				
31-Mar	8	7	7	8	8	4				
7-Apr	4	10	8	5	5	7				
14-Apr	11	3	5	4	12	6				
21-Apr	4	6	8	6	5	2				
28-Apr	3	6	10	4	6	6				
5-May	7	5	6	4	7	2				
12-May	3	7	7	3	4	10				
19-May	6	4	4	9	7	2				
26-May	8	8	1	6	11	5				
2-Jun	6	6	3	12	4	5				
9-Jun	15	2	7	2	5	4				
16-Jun	3	6	6	7	9	6				
23-Jun	4	4	8	8	3	4				
30-Jun	7	7	6	5	6	7				
7-Jul	2	5	7	8	5	4				
14-Jul	9	10	9	4	10	2				
21-Jul	7	2	2	3	5	4				
28-Jul	6	3	5	5	8	5				
4-Aug	5	8	3	10	2	5				
11-Aug	2	8	3	7	4	2				
18-Aug	2	6	11	3	6	4				
25-Aug	4	3	4	5	1	5				
1-Sep	11	7	1	2	1	10				
8-Sep	3	5	4	3	3	5				
15-Sep	7	3	1	4	3	4				
22-Sep	4	6	7	1	3	6				
29-Sep	8	6	2	6	1	4				
6-Oct	5	6	2	4	5	2				
13-Oct	12	8	2	12	7	8				
20-Oct	6	4	8	7	2	10				
27-Oct	8	4	9	8	3	8				
3-Nov	6	4	8	6	7	5				
10-Nov	6	4	4	5	5	5				
17-Nov	7	7	6	0	12	7				
24-Nov	4	10	6	3	8	7				
1-Dec	7	3	4	3	5	5				
8-Dec	8	4	5	7	7	8				
15-Dec	16	9	5	6	6	7				
22-Dec	5	3	11	6	7	4				
29-Dec	8	9	10	9	6	4				
31-Dec	8	2	5	4	3	6				
<b>Total</b>	<b>332</b>	<b>303</b>	<b>290</b>	<b>288</b>	<b>287</b>	<b>282</b>				

## Alcohol Related Fatalities

### NOTE: UPDATES TO THIS DATA WERE NOT AVAILABLE AT TIME OF REPORT

- 24% of fatally injured and tested drivers and riders had a BAC at 0.05 g/100ml or over (41 of 172) compared to 25% over the previous 12 month period (43 of 169).
- In Melbourne, 21 drivers/riders fatally injured and tested were at or over 0.05, with 38% of these having a BAC in excess of 0.15 g/100ml. Across rural Victoria, 20 drivers/riders fatally injured and tested were at or over 0.05, with 65% of these having a BAC over 0.15.
- Of the 41 drivers and riders fatally injured and tested at or over 0.05, 15% (6) were aged under 21, 39% (16) were aged 21-29, 27% (11) were aged 30-39 and 20% (8) were aged 40 years and over. In the previous year (43 fatally injured) the corresponding figures were 19% (8), 28% (12), 19% (8) and 35% (15), respectively.

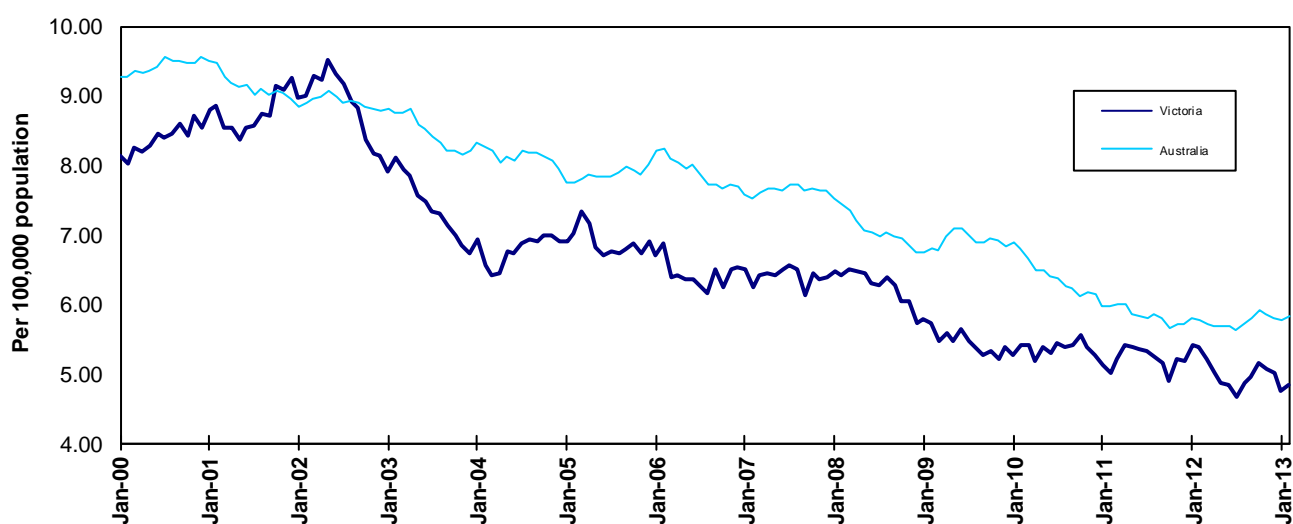
### BAC Fatalities (12 months to April 2010)

Category	2010	2009	2008	2010 v 2009	2010 v 2008	5 Year Av
<b>Melbourne Drivers and Riders</b>						
<0.05	55	63	63	-8 (-13%)	-8 (-13%)	62
[a] at 0.05 & above	21	17	25	4 (24%)	-4 (-16%)	21
% at 0.05 & above	(28%)	(21%)	(28%)			(25%)
[b] >0.15	8	10	12	-2 (-20%)	-4 (-33%)	9
%>0.15	(11%)	(13%)	(14%)			(11%)
[b] as a % of [a]	(38%)	(59%)	(48%)			(43%)
BAC Unknown	5	3	1	2 (67%)	4 (400%)	3
<b>Country Drivers and Riders</b>						
<0.05	76	63	90	13 (21%)	-14 (-16%)	78
[a] at 0.05 & above	20	26	32	-6 (-23%)	-12 (-38%)	26
% at 0.05 & above	(21%)	(29%)	(26%)			(25%)
[b] >0.15	13	17	20	-4 (-24%)	-7 (-35%)	17
%>0.15	(14%)	(19%)	(16%)			(16%)
[b] as a % of [a]	(65%)	(65%)	(63%)			(64%)
BAC Unknown	7	2	1	5 (250%)	6 (600%)	5
<b>Victorian Total Drivers and Riders</b>						
<0.05	131	126	153	5 (4%)	-22 (-14%)	140
[a] at 0.05 & above	41	43	57	-2 (-5%)	-16 (-28%)	47
% at 0.05 & above	(24%)	(25%)	(27%)			(25%)
[b] >0.15	21	27	32	-6 (-22%)	-11 (-34%)	26
%>0.15	(12%)	(16%)	(15%)			(14%)
[b] as a % of [a]	(51%)	(63%)	(56%)			(54%)
BAC Unknown	12	5	2	7 (140%)	10 (500%)	7
<b>Victorian Total Pedestrians</b>						
<0.05	32	35	38	-3 (-9%)	-6 (-16%)	33
[a] at 0.05 & above	8	21	9	-13 (-62%)	-1 (-11%)	14
% at 0.05 & above	(20%)	(38%)	(19%)			(30%)
[b] >0.15	3	10	8	-7 (-70%)	-5 (-63%)	9
%>0.15	(8%)	(18%)	(17%)			(19%)
[b] as a % of [a]	(38%)	(48%)	(89%)			(62%)
BAC Unknown	6	4	2	2 (50%)	4 (200%)	4

## The National Picture

State	Fatalities (12 months to February)					2013 v 2012
	2013	2012	2011	2010		
NSW	375	363	386	448	12	(3%)
VIC	273	299	275	283	-26	(-9%)
QLD	293	278	247	347	15	(5%)
SA	94	97	109	120	-3	(-3%)
WA	191	175	209	182	16	(9%)
TAS	31	24	30	63	7	(29%)
NT	47	48	46	40	-1	(-2%)
ACT	13	4	18	11	9	(225%)
AUST TOTAL	1,317	1,288	1,320	1,494	29	(2%)
AUST minus VIC	1,044	989	1,045	1,211	55	(6%)

State	Fatalities per 10,000 registered vehicles (12 months to February)			Fatalities per 100,000 population (12 months to February)		
	2013	2012	2011	2013	2012	2011
NSW	0.76	0.75	0.82	5.13	5.02	5.39
VIC	0.63	0.70	0.66	4.84	5.39	5.02
QLD	0.83	0.80	0.73	6.41	6.20	5.57
SA	0.73	0.76	0.87	5.67	5.92	6.68
WA	0.95	0.90	1.11	7.82	7.41	9.07
TAS	0.71	0.56	0.72	6.05	4.69	5.90
NT	3.28	3.44	3.36	19.96	20.73	19.96
ACT	0.48	0.15	0.70	3.46	1.08	4.97
AUST TOTAL	0.78	0.78	0.81	5.82	5.76	5.97
AUST minus VIC	0.83	0.80	0.87	6.14	5.88	6.28



Victoria v Australia – 12 Month Moving Fatality Rate

## Booze-Bus Random Breath Testing\*

12 months to February 2013 (monthly totals)

	2012						2013					
	Mar	Apr	May	Jun	Jul	Aug	Sep	Oct	Nov	Dec	Jan	Feb
Melbourne	87,082	89,651	91,052	79,523	79,063	79,829	97,391	91,425	96,830	98,007	93,928	55,900
Country	12,284	7,403	7,539	7,285	3,932	7,314	4,599	10,101	16,705	13,751	7,046	6,529
Vic Total	95,484	94,154	99,115	97,077	98,819	86,808	82,428	87,473	101,990	111,758	101,990	62,429

12 months to June 2012 vs previous 12 months

	2012	2011	2010	2012 v 2011	2012 v 2010
Melbourne	1,059,920	928,178	1,066,255	131,742 (14%)	-6,335 (-1%)
Country	110,848	155,069	195,681	-44,221 (-29%)	-84,833 (-43%)
Vic Total	1,170,768	1,083,247	1,261,936	87,521 (8%)	-91,168 (-7%)

\*Due to police industrial action, reliable random breath testing data is not available from May to October 2011. For the rolling 12 month totals, 2010 data has been used as a substitute in the relevant months.

## Mobile Safety Camera Data

Speed Infringements Issued from Mobile Cameras (monthly totals)

Monthly Average = 45,426

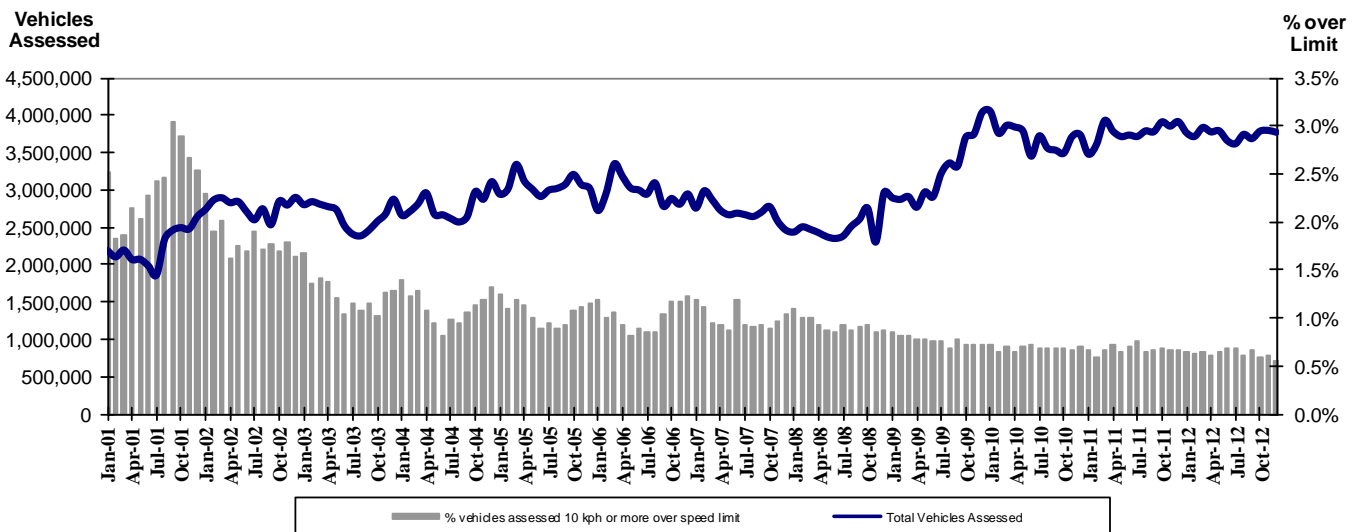
2012											
Jan	Feb	Mar	Apr	May	Jun	Jul	Aug	Sep	Oct	Nov	Dec
54,857	43,904	50,948	42,935	50,292	45,729	48,023	45,032	42,429	45,757	45,777	29,434

Excessive Speed Infringements (ESI) Issued from Mobile Cameras (monthly totals)

Monthly Average = 368

2012											
Jan	Feb	Mar	Apr	May	Jun	Jul	Aug	Sep	Oct	Nov	Dec
487	340	435	374	360	341	352	368	353	396	356	256

Notes: An ESI is defined as 25km/h over the speed limit except in a 110km/h zone where it is 20km/h over the limit.



Mobile Safety Cameras – Vehicles assessed and percentage of vehicles assessed 10km/h or more over speed limit per month



## Explanations and References

Hi-AlcTime is those times of the day and week (*shaded* in the table below) when casualty crashes are ten times more likely to involve alcohol than casualty crashes at other (Lo-AlcTime) times.

	12am - 6am	6am - 8am	8am - 10am	10am - 2pm	2pm - 4pm	4pm - 6pm	6pm - 12pm
Monday							
Tuesday							
Wednesday							
Thursday							
Friday							
Saturday							
Sunday							

Police Service Areas align with Local Government Areas. Most Police Service Areas are equivalent to a single Local Government Area, while the remainder comprise two or three Local Government Areas.

Police Service Area	Local Government Area(s)	Police Service Area	Local Government Area(s)
BALLARAT	BALLARAT, PYRENEES	MAROONDAH	MAROONDAH
BANYULE	BANYULE	MELBOURNE	MELBOURNE
BASS COAST	BASS COAST, SOUTH GIPPSLAND	MELTON	MELTON
BAW BAW	BAWBAW	MILDURA	MILDURA
BENALLA	BENALLA, MANSFIELD, MURRINDINDI	MITCHELL	MITCHELL, STRATHBOGIE
BENDIGO	GREATER BENDIGO	MONASH	MONASH
BOROONDARA	BOROONDARA	MOONEE VALLEY	MOONEE VALLEY
BRIMBANK	BRIMBANK	MOORABOOL	GOLDEN PLAINS, HEPBURN, MOORABOOL
CAMPASPE	CAMPASPE	MORELAND	MORELAND
CARDINIA	CARDINIA	MORNINGTON PENINSULA	MORNINGTON PENINSULA
CASEY	CASEY	NILLUMBIK	NILLUMBIK
CENTRAL GOLDFIELDS	CENTRAL GOLDFIELDS, LODDON	NORTHERN GRAMPIANS	ARARAT, NORTHERN GRAMPIANS, YARRIAMIACK
GREATER DANDENONG	GREATER DANDENONG	PORT PHILLIP	PORT PHILLIP
DAREBIN	DAREBIN	SHEPPARTON	GREATER SHEPPARTON
EAST GIPPSLAND	EAST GIPPSLAND	SOUTHERN GRAMPIANS	GLENELG, SOUTHERN GRAMPIANS
FRANKSTON	FRANKSTON	STONNINGTON	STONNINGTON
GEELONG	GREATER GEELONG, QUEENSCLIFF	SURFCOAST	SURFCOAST, COLAC OTWAY
GLENEIRA	GLENEIRA, BAYSIDE	SWANHILL	BULOKE, GANNAWARRA, SWAN HILL
HOBSONS BAY	HOBSONSBAY	WANGARATTA	ALPINE, MOIRA, WANGARATTA
HORSHAM	HINDMARSH, HORSHAM, WESTWIMMERA	WARRNAMBOOL	CORANGAMITE, MOYNE, WARRNAMBOOL
HUME	HUME	WELLINGTON	WELLINGTON
KINGSTON	KINGSTON	WHITEHORSE	WHITEHORSE
KNOX	KNOX	WHITTLESEA	WHITTLESEA
LATROBE	LATROBE	WODONGA	INDIGO, TOWONG, WODONGA
MACEDON RANGES	MOUNT ALEXANDER, MACEDON RANGES	WYNDHAM	WYNDHAM
MANNINGHAM	MANNINGHAM	YARRA	YARRA
MARIBYRNONG	MARIBYRNONG	YARRA RANGES	YARRA RANGES

## Useful Internet Sites

### TAC Sites

- TAC Safety (Road Safety) [www.tacsafety.com.au](http://www.tacsafety.com.au)
- TAC How safe is your car [www.howsafeisyourcar.com.au](http://www.howsafeisyourcar.com.au)
- TAC Learners Log [www.learnerslog.com.au](http://www.learnerslog.com.au)
- TAC Motorcycle Safety Website [www.spokes.com.au](http://www.spokes.com.au)
- TAC Corporate site [www.tac.vic.gov.au](http://www.tac.vic.gov.au)

### Victorian Sites:

- VicRoads [www.vicroads.vic.gov.au](http://www.vicroads.vic.gov.au)
- Victoria Police [www.police.vic.gov.au](http://www.police.vic.gov.au)
- Parliamentary Road Safety Committee [www.parliament.vic.gov.au/rsc/](http://www.parliament.vic.gov.au/rsc/)
- ARRB Transport Research [www.arrb.com.au](http://www.arrb.com.au)
- RACV [www.racv.com.au](http://www.racv.com.au)
- Monash University Accident Research Centre [www.monash.edu.au/muarc](http://www.monash.edu.au/muarc)
- Roadsafe [www.roadsafe.org.au](http://www.roadsafe.org.au)
- Cameras Save Lives [www.camerassavelives.vic.gov.au](http://www.camerassavelives.vic.gov.au)

### National and Interstate Sites:

- Australian Transport Safety Bureau [www.atsb.gov.au](http://www.atsb.gov.au)
- Roads and Traffic Authority (NSW) [www.rta.nsw.gov.au](http://www.rta.nsw.gov.au)
- Queensland Transport - Road Safety [transport.qld.gov.au/Home/Safety/Road](http://transport.qld.gov.au/Home/Safety/Road)
- Department of Transport (SA) [www.transport.sa.gov.au/index.htm](http://www.transport.sa.gov.au/index.htm)
- Main Roads Western Australia - Road Safety [www.mrwa.wa.gov.au](http://www.mrwa.wa.gov.au)

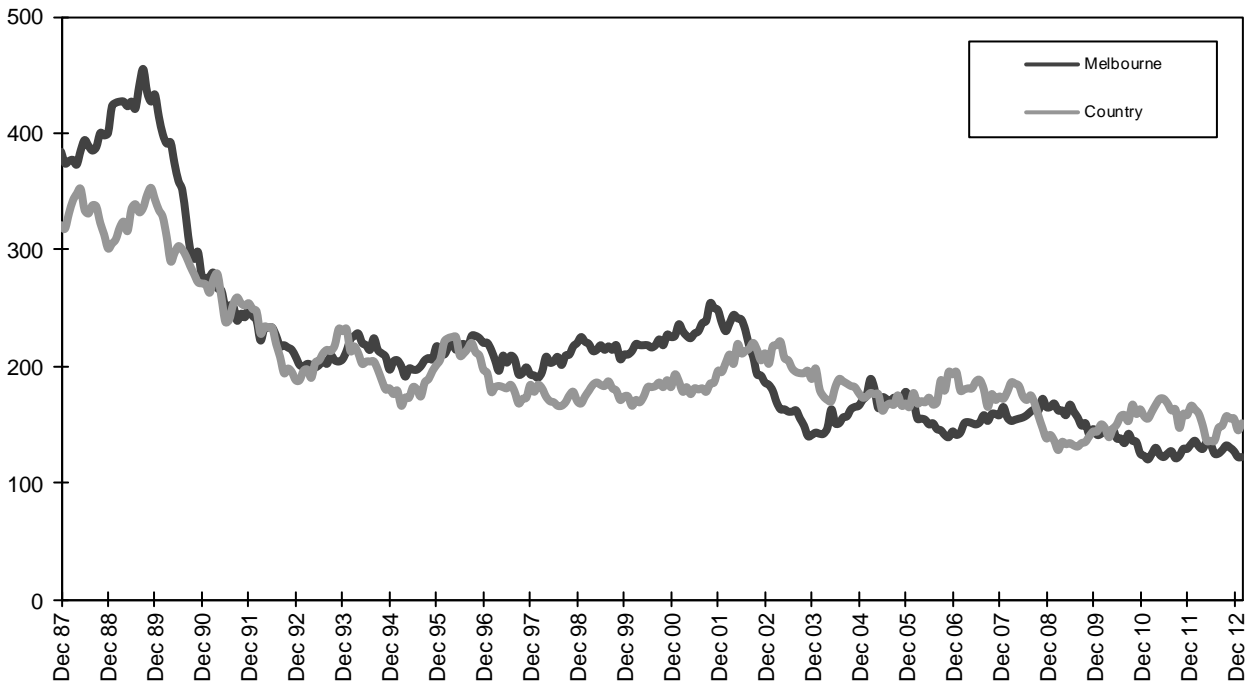
### International Sites:

- National Highway Traffic Safety Admin (USA) [www.nhtsa.dot.gov](http://www.nhtsa.dot.gov)
- Swedish Road and Transport Institute (VTI) [www.vti.se](http://www.vti.se)
- SWOV Institute for Road Safety Research [www.swov.nl](http://www.swov.nl)

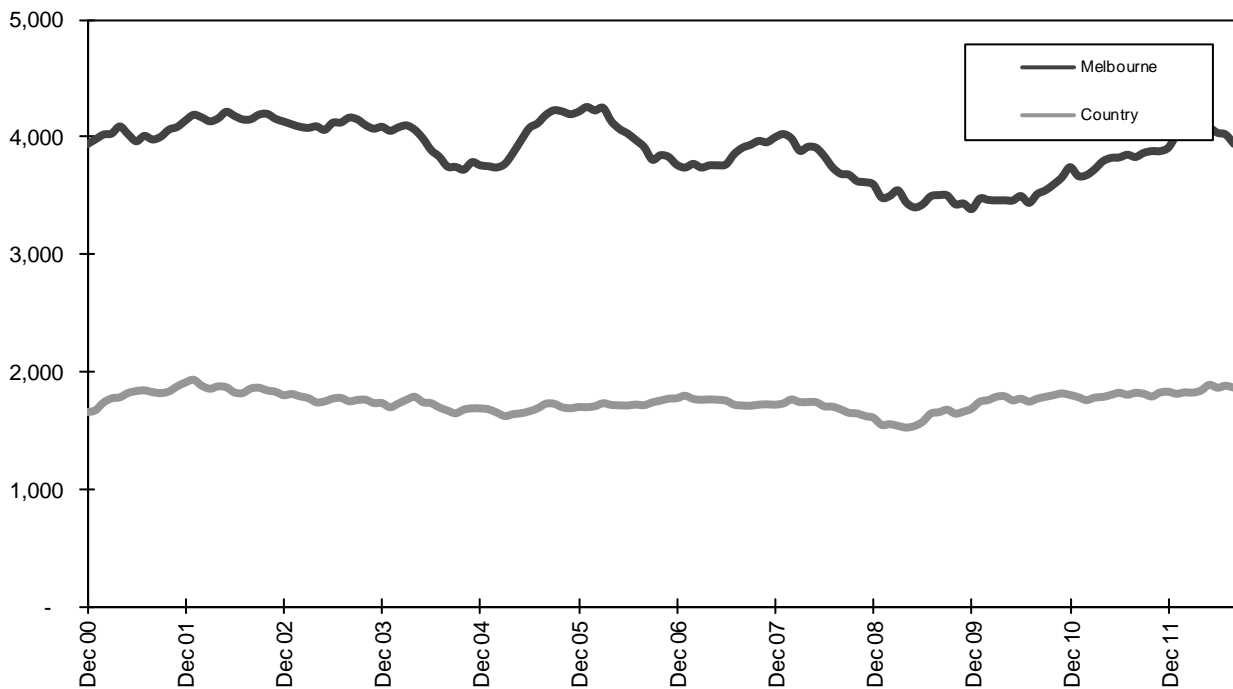
### Related Sites:

- Australian Drug Foundation [www.adf.org.au](http://www.adf.org.au)
- Amy Gillett Foundation [www.amygillett.org.au](http://www.amygillett.org.au)

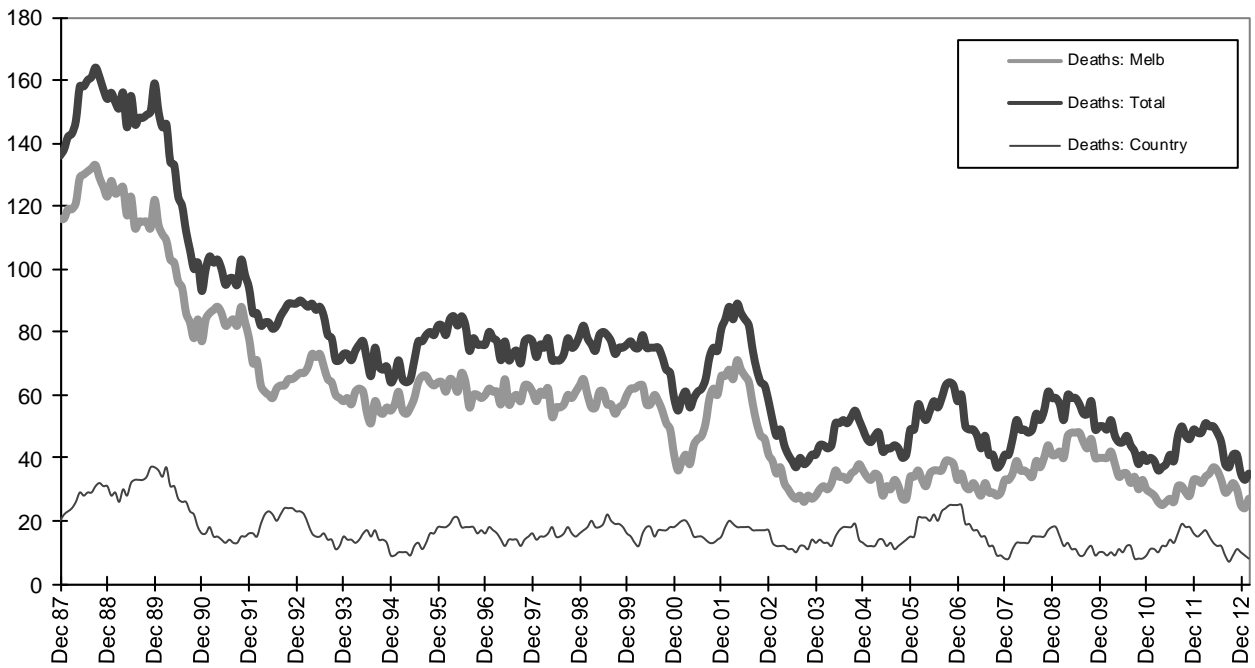
Figures



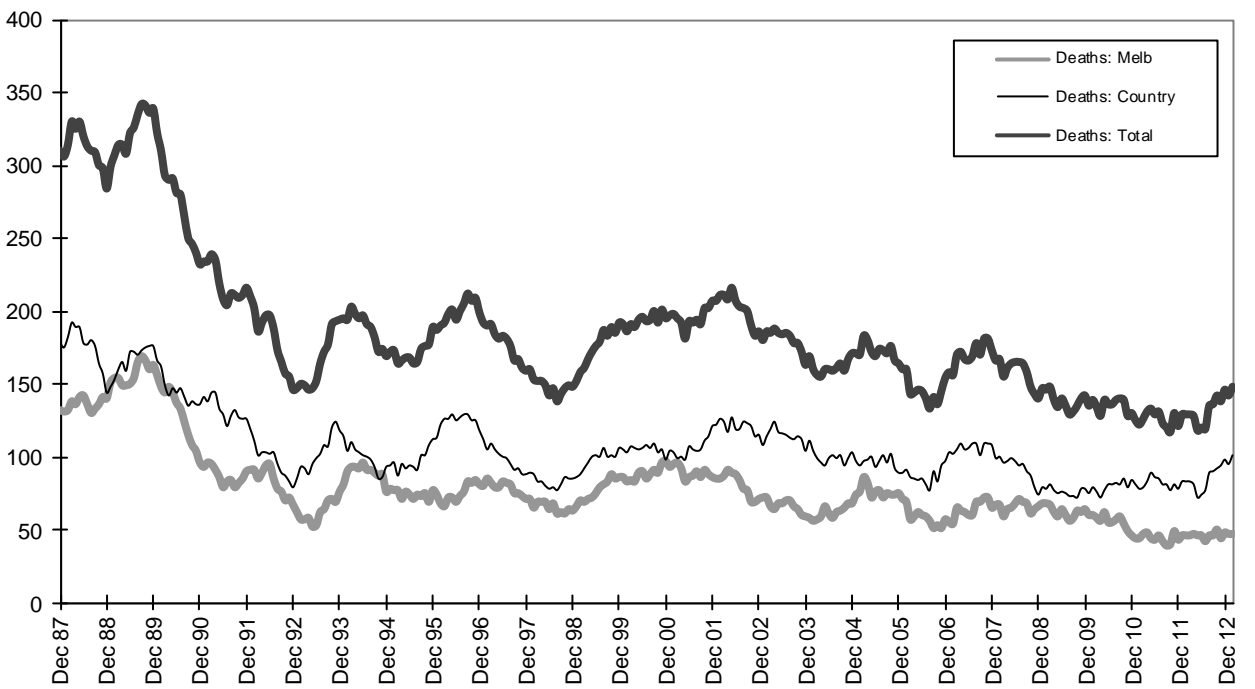
Graph 1a - Melbourne/country fatalities



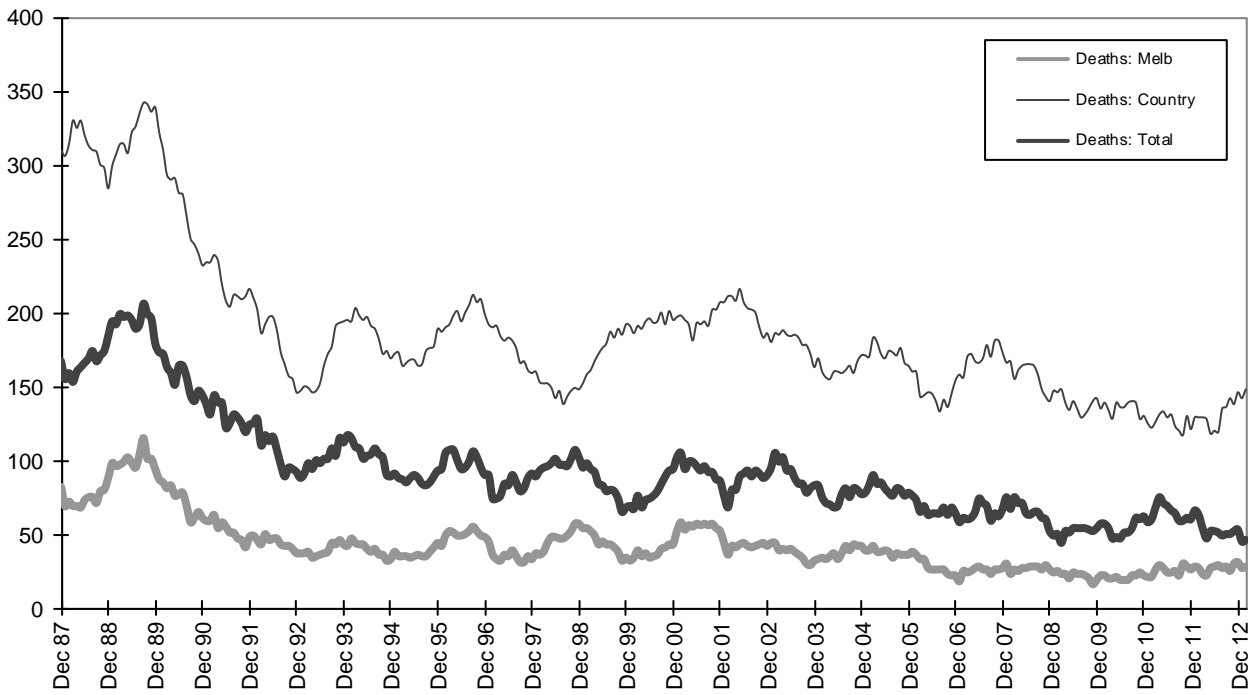
Graph 1b - Melbourne/country Claims involving an acute hospital admission



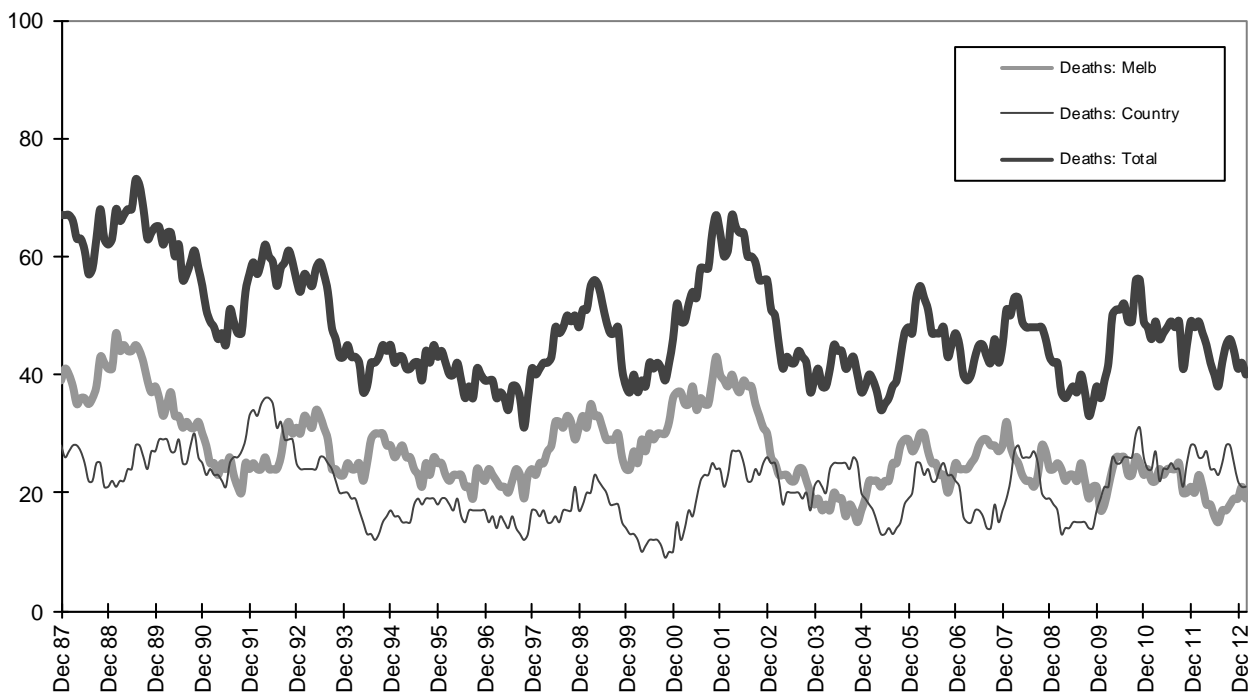
Graph 2a - Pedestrian fatalities (Melbourne/country)



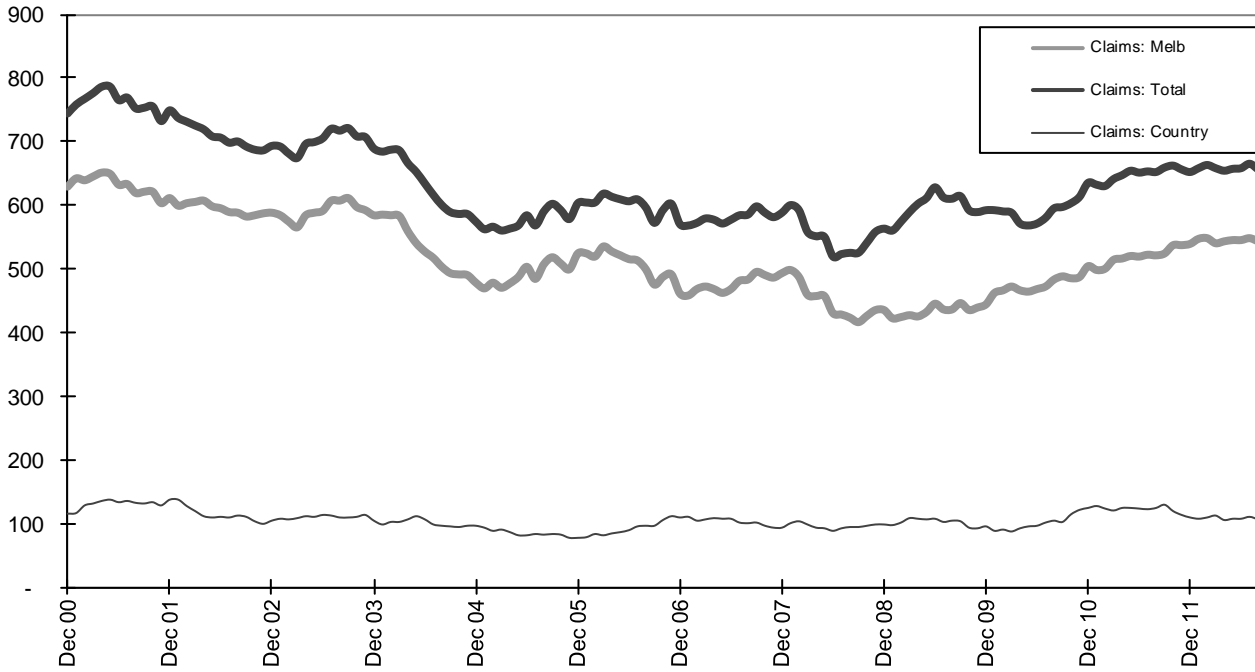
Graph 2b - Driver fatalities (Melbourne/country)



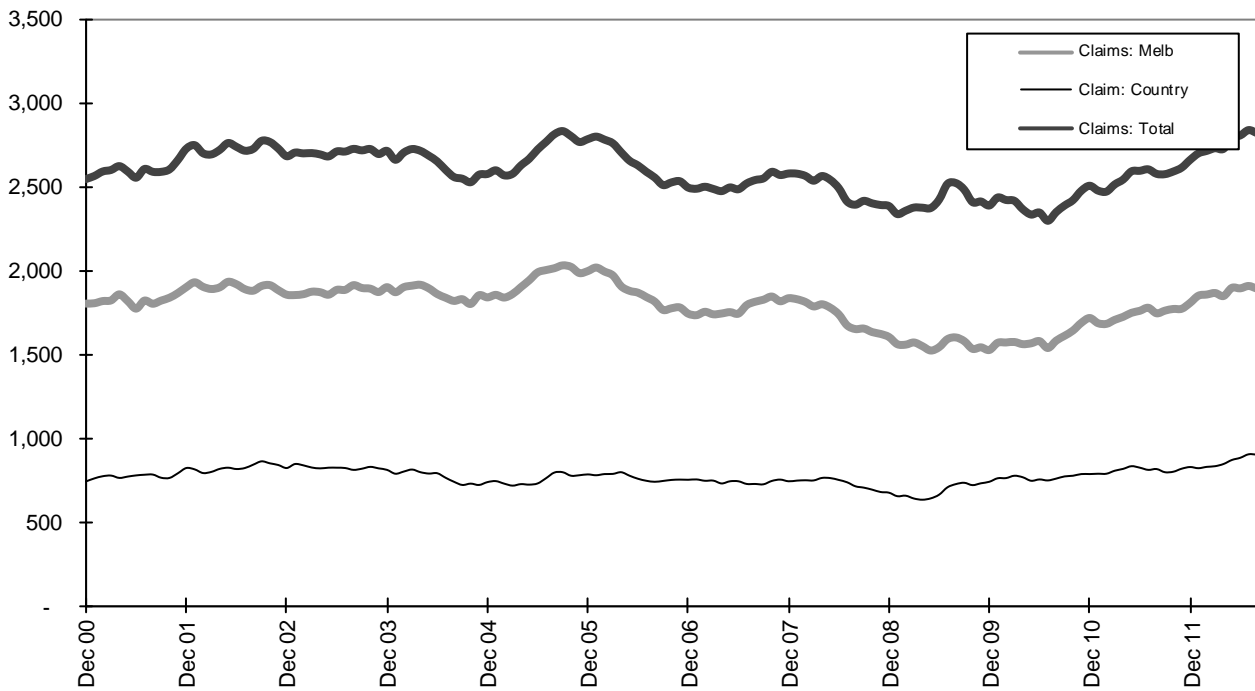
Graph 2c - Passenger fatalities (Melbourne/country)



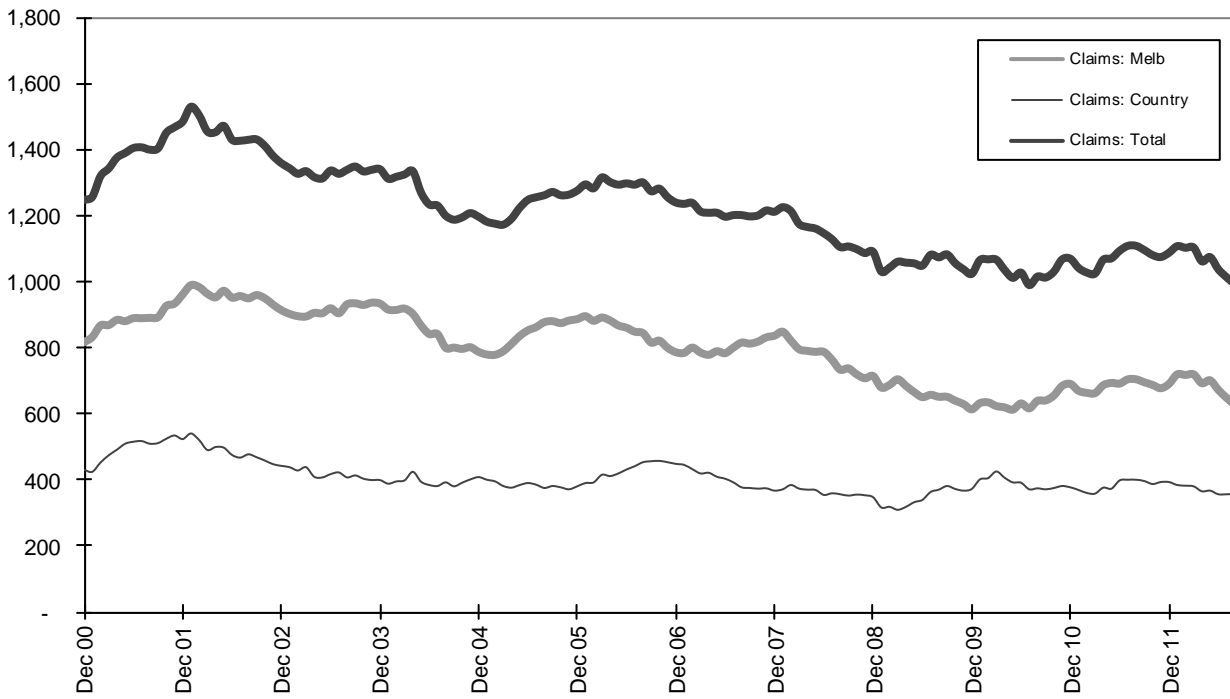
Graph 2d - Motorcyclist fatalities (Melbourne/country)



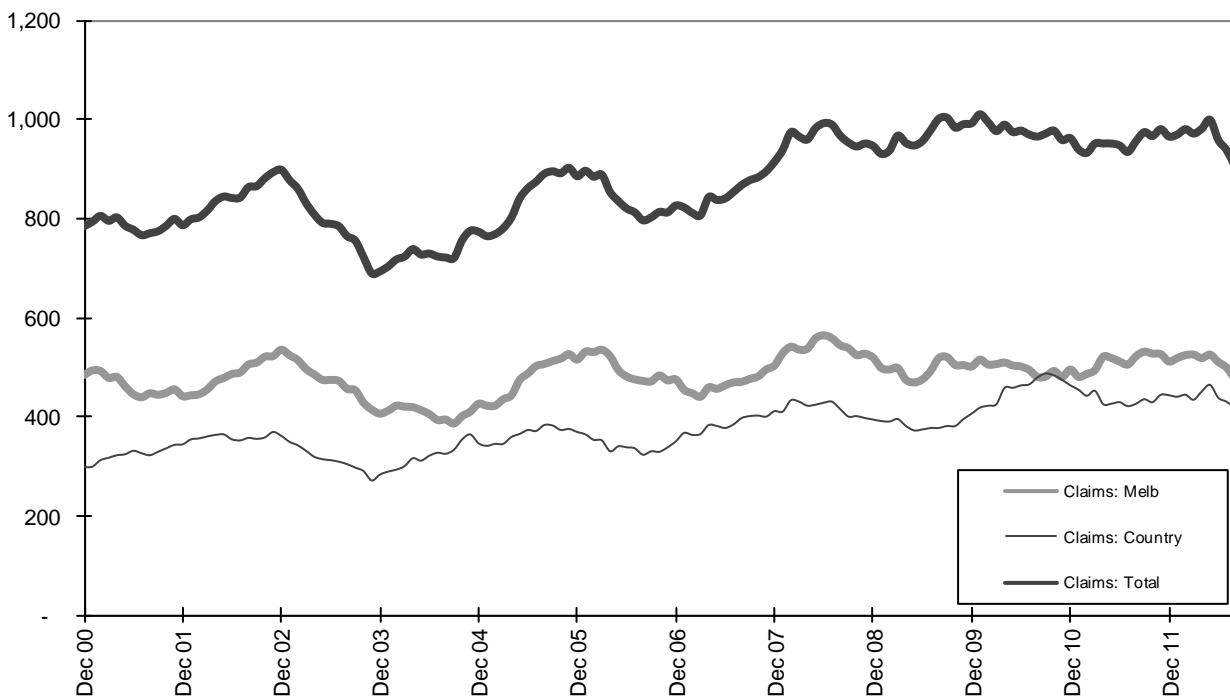
Graph 3a - Pedestrian Claims involving an acute hospital admission (Melbourne/country)



Graph 3b - Driver Claims involving an acute hospital admission (Melbourne/country)



Graph 3c - Passenger Claims involving an acute hospital admission (Melbourne/country)



Graph 3d - Motorcyclist Claims involving an acute hospital admission (Melbourne/country)