



ROAD SAFETY STATISTICAL SUMMARY

April 2013



**TRANSPORT
ACCIDENT
COMMISSION**

60 Brougham Street
Geelong Vic 3220
PO Box 742
Geelong Vic 3220
Ausdoc DX 216079 Geelong

Telephone 1300 654 329
STD Toll Free 1800 332 556
Fax: 03 9656 9300
www.tac.vic.gov.au
ABN 22 033 947 623



Contents

Status Report.....	4
Fatalities.....	4
Claims involving acute hospitalisation over 14 days and an acute hospital admission*	5
Fatalities: 12 months to April 2013	6
Claims involving acute hospitalisation over 14 days: 12 months to October 2012 (claim acceptance date)	8
Claims involving an acute hospital admission: 12 months to October 2012 (claim acceptance date).....	10
Fatalities: Victorian monthly totals since 1951	12
Fatalities by Week (2007 to 2013).....	13
Alcohol Related Fatalities.....	14
The National Picture	15
Booze-Bus Random Breath Testing*	16
Mobile Safety Camera Data	16
Explanations and References	17
Useful Internet Sites.....	18
Figures	19

Note about the data in this report

- All data provided in this report is the data most recently available at time of production. Fatalities, breath-test data and safety camera data are updated to the end of report month. A 6-month lag applies to TAC claims data, and a 2-month lag applies to alcohol related fatalities data.
- Note that reported data inclusive of February 2008 or February 2012 will have one extra day of exposure compared to non-leap years.

*An acute hospital admission refers to a hospital admission that occurred within 7 days of accident.

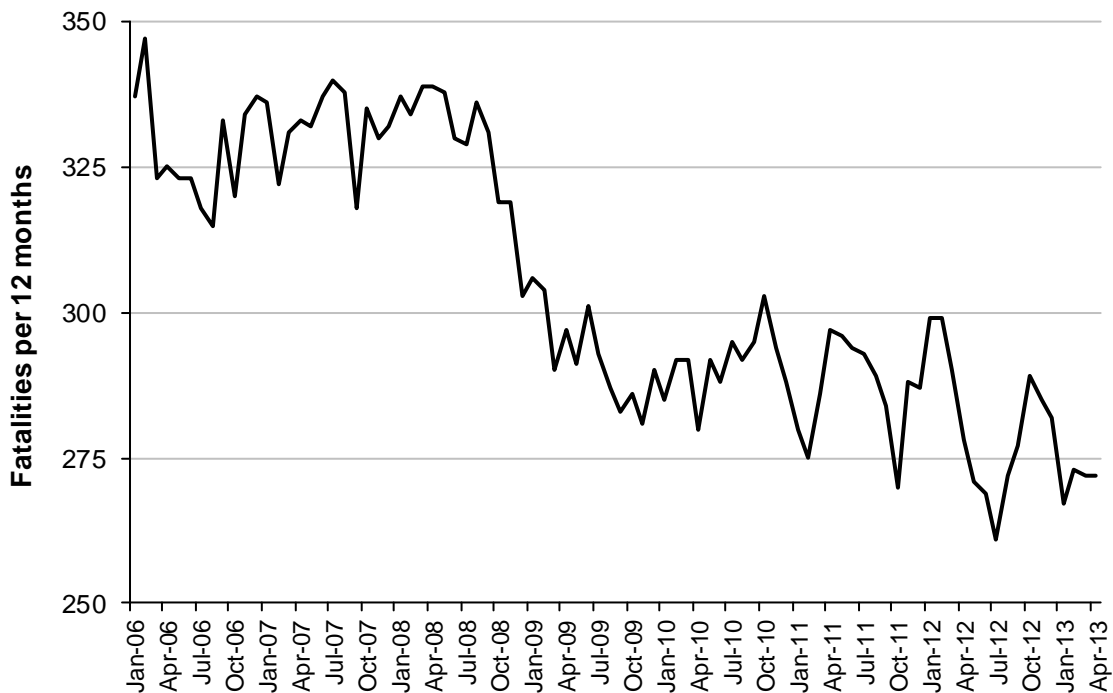
Status Report

Fatalities

- The rolling 12 month number of road fatalities in April 2013 stands at 269, 3% less than in 2012 (278).
- 19 people were fatally injured in April 2013 and 24 in March 2013 on Victorian roads. This compares to 19 in April 2012 and 25 in March 2012.

Fatalities (year to date, to end April 2013)

Category	2013	2012	2011	2013 v 2012	2013 v 2011	5 Year Av
Fatal Injuries (Rolling 12 Month Total)						
Fatal (to April)	269	278	297	-9	(-3%)	284
per 10,000 veh	0.61	0.65	0.71	-0.04	(-6%)	0.68
per 100,000 pop	4.76	5.00	5.41	-0.24	(-5%)	5.18
Accidents (Rolling 12 Month Total)						
Fatal (to April)	225	254	270	-29	(-11%)	256
per 10,000 veh	0.52	0.60	0.65	-0.08	(-13%)	0.61
per 100,000 pop	3.98	4.57	4.92	-0.59	(-13%)	4.65



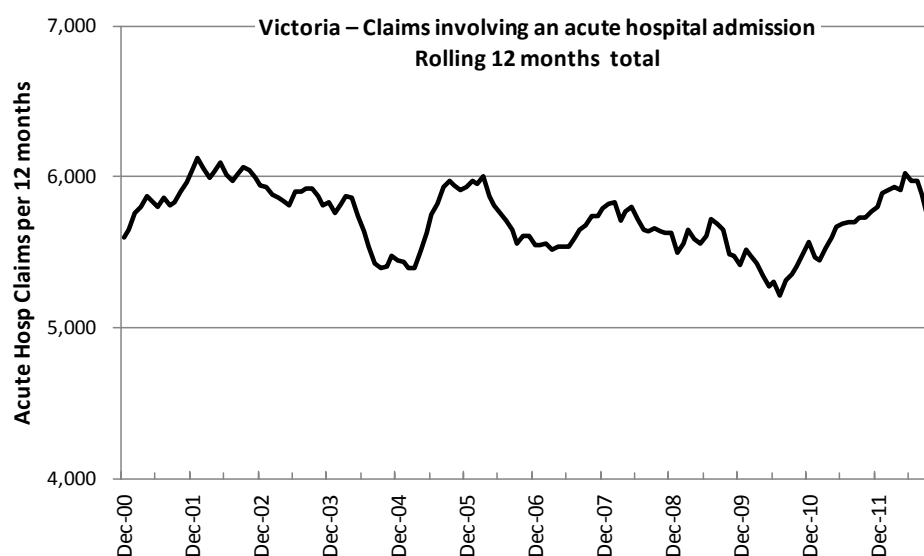
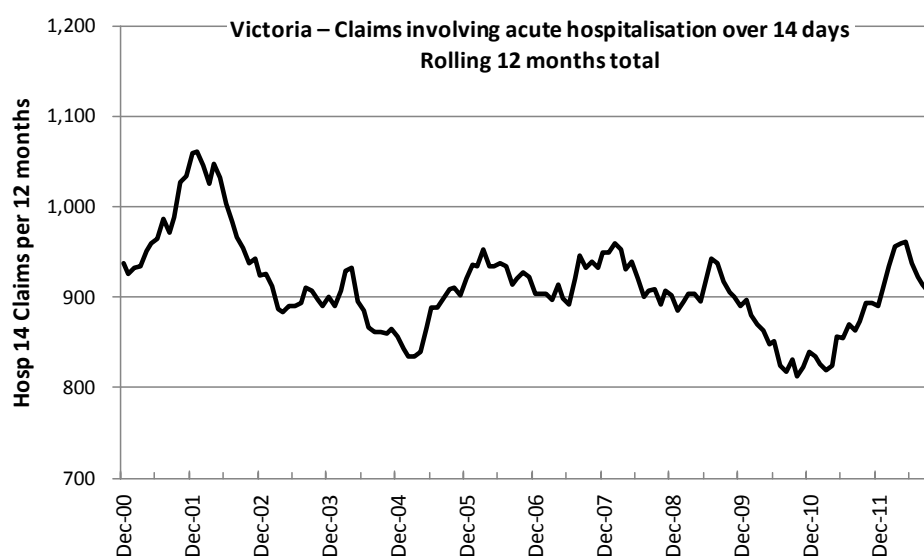
Victoria – Fatalities, rolling 12 months total

Note: Data is subject to revision as additional information about known accidents is received, and as new accident reports are received and processed.

Claims involving acute hospitalisation over 14 days and an acute hospital admission*

(by claim acceptance date - year to date, to midnight 31 October 2012)

Category	2012	2011	2010	2012 v 2011		2012 v 2010		5 Year Av
Claims involving acute hospitalisation over 14 days (Rolling 12 Month Total)								
Claims (to October)	929	893	814	+36	(+4%)	+115	(+14%)	889
per 10,000 veh	2.2	2.1	2.0	+0.1	(+5%)	+0.2	(+10%)	2.3
per 100,000 pop	16.6	16.2	14.9	+0.4	(+2%)	+1.7	(+11%)	16.8
Claims involving an acute hospital admission (Rolling 12 Month Total)								
Claims (to October)	5,744	5,732	5,404	12	(+0%)	+340	(+6%)	5,600
per 10,000 veh	13.3	13.6	13.1	-0.3	(-2%)	+0.2	(+2%)	14.0
per 100,000 pop	102.8	103.8	99.0	-1.0	(-1%)	+3.8	(+4%)	104.9



Note: Data is subject to revision as additional information about known claims is received, and as new claims are received and processed.

*An acute hospital admission refers to a hospital admission that occurred within 7 days of accident.

Fatalities: 12 months to April 2013

Category	2013	2012	2011	2013 v 2012		2013 v 2011		5 Year Av
Overview								
Fatalities	269	278	297	-9	(-3%)	-28	(-9%)	284
Accidents	225	254	270	-29	(-11%)	-45	(-17%)	256
Sex								
Male	185	198	221	-13	(-7%)	-36	(-16%)	202
Female	84	80	76	+4	(+5%)	+8	(+11%)	82
Roaduser								
Bicyclist	5	8	8	-3	(-38%)	-3	(-38%)	8
Driver	145	128	131	+17	(+13%)	+14	(+11%)	134
Motorcyclist	40	45	46	-5	(-11%)	-6	(-13%)	43
Passenger	48	47	75	+1	(+2%)	-27	(-36%)	54
Pedestrian	31	50	37	-19	(-38%)	-6	(-16%)	45
Location								
Melbourne	109	129	130	-20	(-16%)	-21	(-16%)	134
Rural Victoria	160	149	167	+11	(+7%)	-7	(-4%)	150
Agegroup								
0-4	3	2	8	+1	(+50%)	-5	(-63%)	5
5-15	8	7	8	+1	(+14%)	0	(0%)	7
16-17	2	9	6	-7	(-78%)	-4	(-67%)	7
18-20	26	32	35	-6	(-19%)	-9	(-26%)	32
21-25	32	34	41	-2	(-6%)	-9	(-22%)	34
26-29	15	22	23	-7	(-32%)	-8	(-35%)	21
30-39	40	41	28	-1	(-2%)	+12	(+43%)	39
40-49	28	31	38	-3	(-10%)	-10	(-26%)	36
50-59	38	30	34	+8	(+27%)	+4	(+12%)	33
60-69	34	28	27	+6	(+21%)	+7	(+26%)	27
70+	41	42	49	-1	(-2%)	-8	(-16%)	45
Altime								
High (Melb)	57	67	70	-10	(-15%)	-13	(-19%)	70
High (Rural)	75	71	95	+4	(+6%)	-20	(-21%)	74
High (Vic)	132	138	165	-6	(-4%)	-33	(-20%)	144
Low (Melb)	52	62	60	-10	(-16%)	-8	(-13%)	64
Low (Rural)	85	78	72	+7	(+9%)	+13	(+18%)	76
Low (Vic)	137	140	132	-3	(-2%)	+5	(+4%)	140
Accident Type								
Intersection								
Adjacent direction	29	29	33	0	(0%)	-4	(-12%)	25
Opposing direction	3	5	8	-2	(-40%)	-5	(-63%)	5
Mid-block/other								
Head on	42	39	38	+3	(+8%)	+4	(+11%)	38
Same direction	15	12	18	+3	(+25%)	-3	(-17%)	16
Manoeuvre/o'taking	16	13	17	+3	(+23%)	-1	(-6%)	17
On path	7	5	8	+2	(+40%)	-1	(-13%)	6
Single vehicle	119	117	132	+2	(+2%)	-13	(-10%)	124
Other (incl peds)	38	58	43	-20	(-34%)	-5	(-12%)	53

Fatalities: 12 months to April 2013 – Continued

Category	2013	2012	2011	2013 v 2012		2013 v 2011		5 Year Av
Police Service Area (based on Local Government Area (see p.13))								
BALLARAT	4	5	11	-1	(-20%)	-7	(-64%)	6
BANYULE	1	3	3	-2	(-67%)	-2	(-67%)	2
BASS COAST	3	10	5	-7	(-70%)	-2	(-40%)	6
BAW BAW	7	2	15	+5	(+250%)	-8	(-53%)	7
BENALLA	10	6	12	+4	(+67%)	-2	(-17%)	8
BENDIGO	14	6	6	+8	(+133%)	+8	(+133%)	8
BOROONDARA	2	1	2	+1	(+100%)	0	(0%)	4
BRIMBANK	8	12	2	-4	(-33%)	+6	(+300%)	7
CAMPASPE	9	4	2	+5	(+125%)	+7	(+350%)	4
CARDINIA	1	12	9	-11	(-92%)	-8	(-89%)	6
CASEY	6	5	11	+1	(+20%)	-5	(-45%)	8
CENTRAL GOLDFIELDS	2	1	9	+1	(+100%)	-7	(-78%)	3
DAREBIN	4	3	3	+1	(+33%)	+1	(+33%)	4
EAST GIPPSLAND	5	6	8	-1	(-17%)	-3	(-38%)	8
FRANKSTON	1	2	7	-1	(-50%)	-6	(-86%)	5
GEELONG	14	14	10	0	(0%)	+4	(+40%)	11
GLEN EIRA	6	6	4	0	(0%)	+2	(+50%)	5
GREATER DANDENONG	5	5	4	0	(0%)	+1	(+25%)	6
HOBSONS BAY	1	1	1	0	(0%)	0	(0%)	1
HORSHAM	4	7	4	-3	(-43%)	0	(0%)	4
HUME	14	5	4	+9	(+180%)	+10	(+250%)	8
KINGSTON	7	4	3	+3	(+75%)	+4	(+133%)	5
KNOX	1	2	1	-1	(-50%)	0	(0%)	3
LA TROBE	8	5	6	+3	(+60%)	+2	(+33%)	6
MACEDON RANGES	6	6	3	0	(0%)	+3	(+100%)	6
MANNINGHAM	3	2	2	+1	(+50%)	+1	(+50%)	3
MARIBYRNONG	5	1	1	+4	(+400%)	+4	(+400%)	2
MAROONDAH	2	5	3	-3	(-60%)	-1	(-33%)	2
MELBOURNE	1	8	3	-7	(-88%)	-2	(-67%)	4
MELTON	3	7	8	-4	(-57%)	-5	(-63%)	6
MILDURA	2	3	3	-1	(-33%)	-1	(-33%)	3
MITCHELL	12	6	8	+6	(+100%)	+4	(+50%)	8
MONASH	4	3	5	+1	(+33%)	-1	(-20%)	5
MOONEE VALLEY	1	1	2	0	(0%)	-1	(-50%)	2
MOORABOOL	9	11	8	-2	(-18%)	+1	(+13%)	8
MORELAND	2	2	7	0	(0%)	-5	(-71%)	4
MORNINGTON PENINSULA	5	4	11	+1	(+25%)	-6	(-55%)	7
NILLUMBIK	1	3	2	-2	(-67%)	-1	(-50%)	2
NORTHERN GRAMPIANS	4	3	4	+1	(+33%)	0	(0%)	4
PORT PHILLIP	0	2	1	-2	(-100%)	-1	(-100%)	1
SHEPPARTON	11	8	2	+3	(+38%)	+9	(+450%)	7
SOUTHERN GRAMPIANS	5	6	5	-1	(-17%)	0	(0%)	5
STONNINGTON	2	2	1	0	(0%)	+1	(+100%)	1
SURF COAST	4	11	8	-7	(-64%)	-4	(-50%)	7
SWAN HILL	4	6	6	-2	(-33%)	-2	(-33%)	5
WANGARATTA	10	11	15	-1	(-9%)	-5	(-33%)	12
WARRNAMBOOL	4	5	7	-1	(-20%)	-3	(-43%)	5
WELLINGTON	4	4	7	0	(0%)	-3	(-43%)	5
WHITEHORSE	2	4	5	-2	(-50%)	-3	(-60%)	4
WHITTLESEA	5	6	7	-1	(-17%)	-2	(-29%)	7
WODONGA	3	3	3	0	(0%)	0	(0%)	3
WYNDHAM	11	5	7	+6	(+120%)	+4	(+57%)	7
YARRA	2	2	5	0	(0%)	-3	(-60%)	3
YARRA RANGES	5	11	6	-6	(-55%)	-1	(-17%)	10

Claims involving acute hospitalisation over 14 days: 12 months to October 2012 (claim acceptance date)

Category	2012	2011	2010	2012 v 2011	2012 v 2010	5 Year Av
Overview						
Claims	929	893	814	+36	(+4%)	887
Sex						
Male	524	548	507	-24	(-4%)	533
Female	404	344	307	+60	(+17%)	353
Roaduser						
Driver	364	341	309	+23	(+7%)	336
Passenger	153	151	117	+2	(+1%)	151
Motorcyclist	165	159	189	+6	(+4%)	167
Pedestrian	186	183	152	+3	(+2%)	172
Cyclist	38	43	37	-5	(-12%)	39
Train/Tram	9	4	8	+5	(+125%)	5
Location						
Melbourne	605	571	513	+34	(+6%)	2,787
Rural Victoria	318	306	300	+12	(+4%)	1,506
Agegroup						
0-4	2	5	6	-3	(-60%)	4
5-15	13	17	17	-4	(-24%)	15
16-17	24	21	15	+3	(+14%)	22
18-20	57	50	60	+7	(+14%)	62
21-25	83	90	70	-7	(-8%)	86
26-29	53	66	47	-13	(-20%)	54
30-39	115	116	105	-1	(-1%)	118
40-49	135	106	123	+29	(+27%)	118
50-59	101	111	85	-10	(-9%)	100
60-69	115	102	84	+13	(+13%)	99
70+	231	209	202	+22	(+11%)	207
Alctime						
High (Melb)	265	258	195	+7	(+3%)	629
High (Rural)	126	131	124	-5	(-4%)	126
High (Vic)	391	389	319	+2	(+1%)	372
Low (Melb)	340	313	318	+27	(+9%)	311
Low (Rural)	192	175	176	+17	(+10%)	175
Low (Vic)	532	488	494	+44	(+9%)	487
Accident Type						
Intersection						
Adjacent direction	123	116	112	+7	(+6%)	119
Opposing direction	76	90	72	-14	(-16%)	77
Mid-block/other						
Head on	59	52	50	+7	(+13%)	53
Same direction	240	204	182	+36	(+18%)	205
Manoeuvre/o'taking	19	23	32	-4	(-17%)	23
On path	59	69	50	-10	(-14%)	61
Single vehicle	93	97	97	-4	(-4%)	85
Other (incl peds)	260	242	219	+18	(+7%)	256

Note: excludes rejected claims and claims for interstate crashes

Claims involving acute hospitalisation over 14 days: 12 months to October 2012 (claim acceptance date) -
Continued

Category	2012	2011	2010	2012 v 2011		2012 v 2010		5 Year Av
Police Service Area (based on Local Government Area (see p.13))								
BALLARAT	10	18	12	-8	(-44%)	-2	(-17%)	11
BANYULE	9	11	11	-2	(-18%)	-2	(-18%)	10
BASS COAST	13	20	16	-7	(-35%)	-3	(-19%)	18
BAW BAW	16	10	7	+6	(+60%)	+9	(+129%)	8
BENALLA	17	20	17	-3	(-15%)	0	(0%)	17
BENDIGO	13	19	23	-6	(-32%)	-10	(-43%)	16
BOROONDARA	28	22	22	+6	(+27%)	+6	(+27%)	22
BRIMBANK	31	24	10	+7	(+29%)	+21	(+210%)	22
CAMPASPE	6	4	5	+2	(+50%)	+1	(+20%)	6
CARDINIA	16	18	15	-2	(-11%)	+1	(+7%)	17
CASEY	18	25	36	-7	(-28%)	-18	(-50%)	26
CENTRAL GOLDFIELDS	2	3	1	-1	(-33%)	+1	(+100%)	3
DAREBIN	20	13	20	+7	(+54%)	0	(0%)	18
EAST GIPPSLAND	18	12	14	+6	(+50%)	+4	(+29%)	15
FRANKSTON	11	20	17	-9	(-45%)	-6	(-35%)	18
GEELONG	31	27	22	+4	(+15%)	+9	(+41%)	28
GLEN EIRA	27	36	30	-9	(-25%)	-3	(-10%)	30
GREATER DANDENONG	24	31	27	-7	(-23%)	-3	(-11%)	27
HOBSONS BAY	14	9	9	+5	(+56%)	+5	(+56%)	11
HORSHAM	11	9	9	+2	(+22%)	+2	(+22%)	7
HUME	31	23	22	+8	(+35%)	+9	(+41%)	25
KINGSTON	15	19	17	-4	(-21%)	-2	(-12%)	18
KNOX	21	15	9	+6	(+40%)	+12	(+133%)	16
LA TROBE	12	24	12	-12	(-50%)	0	(0%)	13
MACEDON RANGES	14	13	21	+1	(+8%)	-7	(-33%)	16
MANNINGHAM	24	12	9	+12	(+100%)	+15	(+167%)	13
MARIBYRNONG	16	14	14	+2	(+14%)	+2	(+14%)	14
MAROONDAH	7	14	9	-7	(-50%)	-2	(-22%)	11
MELBOURNE	28	31	28	-3	(-10%)	0	(0%)	27
MELTON	19	13	8	+6	(+46%)	+11	(+138%)	11
MILDURA	12	6	5	+6	(+100%)	+7	(+140%)	7
MITCHELL	25	12	20	+13	(+108%)	+5	(+25%)	17
MONASH	21	23	24	-2	(-9%)	-3	(-13%)	24
MOONEE VALLEY	21	14	12	+7	(+50%)	+9	(+75%)	14
MOORABOOL	9	15	10	-6	(-40%)	-1	(-10%)	15
MORELAND	22	23	17	-1	(-4%)	+5	(+29%)	19
MORNINGTON PENINSULA	38	27	27	+11	(+41%)	+11	(+41%)	30
NILLUMBIK	9	5	4	+4	(+80%)	+5	(+125%)	6
NORTHERN GRAMPPIANS	6	5	5	+1	(+20%)	+1	(+20%)	5
PORT PHILLIP	14	10	8	+4	(+40%)	+6	(+75%)	14
SHEPPARTON	14	9	12	+5	(+56%)	+2	(+17%)	14
SOUTHERN GRAMPPIANS	8	8	13	0	(0%)	-5	(-38%)	8
STONNINGTON	17	19	16	-2	(-11%)	+1	(+6%)	16
SURF COAST	8	15	11	-7	(-47%)	-3	(-27%)	12
SWAN HILL	7	3	5	+4	(+133%)	+2	(+40%)	6
WANGARATTA	17	16	17	+1	(+6%)	0	(0%)	17
WARRNAMBOOL	17	11	12	+6	(+55%)	+5	(+42%)	12
WELLINGTON	9	9	12	0	(0%)	-3	(-25%)	11
WHITEHORSE	21	20	24	+1	(+5%)	-3	(-13%)	21
WHITTLESEA	30	14	16	+16	(+114%)	+14	(+88%)	20
WODONGA	14	5	9	+9	(+180%)	+5	(+56%)	9
WYNDHAM	22	17	12	+5	(+29%)	+10	(+83%)	17
YARRA	9	14	12	-5	(-36%)	-3	(-25%)	11
YARRA RANGES	22	35	28	-13	(-37%)	-6	(-21%)	31

Note: excludes rejected claims and claims for interstate crashes

Claims involving an acute hospital admission: 12 months to October 2012 (claim acceptance date)

Category	2012	2011	2010	2012 v 2011	2012 v 2010	2012 v 2010	5 Year Av
Overview							
Claims	5,744	5,732	5,404	+12	(+0%)	+340	(+6%) 5,601
Sex							
Male	3,245	3,306	3,113	-61	(-2%)	+132	(+4%) 3,240
Female	2,498	2,425	2,288	+73	(+3%)	+210	(+9%) 2,360
Roaduser							
Driver	2,753	2,590	2,418	+163	(+6%)	+335	(+14%) 2,513
Passenger	986	1,080	1,030	-94	(-9%)	-44	(-4%) 1,050
Motorcyclist	860	967	977	-107	(-11%)	-117	(-12%) 946
Pedestrian	650	662	603	-12	(-2%)	+47	(+8%) 610
Cyclist	358	346	325	+12	(+3%)	+33	(+10%) 328
Train/Tram	26	20	22	+6	(+30%)	+4	(+18%) 19
Location							
Melbourne	3,809	3,879	3,595	-70	(-2%)	+214	(+6%) 3,666
Rural Victoria	1,863	1,788	1,798	+75	(+4%)	+65	(+4%) 1,747
Agegroup							
0-4	52	50	43	+2	(+4%)	+9	(+21%) 50
5-15	184	204	225	-20	(-10%)	-41	(-18%) 207
16-17	126	117	132	+9	(+8%)	-6	(-5%) 139
18-20	521	561	531	-40	(-7%)	-10	(-2%) 566
21-25	716	742	637	-26	(-4%)	+79	(+12%) 707
26-29	447	410	433	+37	(+9%)	+14	(+3%) 426
30-39	900	911	860	-11	(-1%)	+40	(+5%) 915
40-49	854	850	795	+4	(+0%)	+59	(+7%) 825
50-59	724	704	679	+20	(+3%)	+45	(+7%) 669
60-69	511	504	440	+7	(+1%)	+71	(+16%) 462
70+	709	680	629	+29	(+4%)	+80	(+13%) 635
Alctime							
High (Melb)	1,728	1,795	1,583	-67	(-4%)	+145	(+9%) 1,672
High (Rural)	790	793	788	-3	(-0%)	+2	(+0%) 770
High (Vic)	2,518	2,588	2,371	-70	(-3%)	+147	(+6%) 2,442
Low (Melb)	2,081	2,084	2,012	-3	(-0%)	+69	(+3%) 1,994
Low (Rural)	1,073	995	1,010	+78	(+8%)	+63	(+6%) 977
Low (Vic)	3,154	3,079	3,022	+75	(+2%)	+132	(+4%) 2,971
Accident Type							
Intersection							
Adjacent direction	830	890	816	-60	(-7%)	+14	(+2%) 843
Opposing direction	317	360	311	-43	(-12%)	+6	(+2%) 325
Mid-block/other							
Head on	313	330	330	-17	(-5%)	-17	(-5%) 323
Same direction	1,088	945	875	+143	(+15%)	+213	(+24%) 920
Manoeuvre/o'taking	229	190	211	+39	(+21%)	+18	(+9%) 209
On path	486	470	434	+16	(+3%)	+52	(+12%) 454
Single vehicle	897	944	861	-47	(-5%)	+36	(+4%) 849
Other (incl peds)	1,584	1,604	1,566	-20	(-1%)	+18	(+1%) 1,615

Note: excludes rejected claims and claims for interstate crashes

Claims involving an acute hospital admission: 12 months to October 2012 (claim acceptance date) -
Continued

Category	2012	2011	2010	2012 v 2011		2012 v 2010		5 Year Av
Police Service Area (based on Local Government Area (see p.13))								
BALLARAT	97	99	85	-2	(-2%)	+12	(+14%)	88
BANYULE	67	63	52	+4	(+6%)	+15	(+29%)	63
BASS COAST	74	85	82	-11	(-13%)	-8	(-10%)	77
BAW BAW	75	48	52	+27	(+56%)	+23	(+44%)	51
BENALLA	97	106	113	-9	(-8%)	-16	(-14%)	101
BENDIGO	127	100	83	+27	(+27%)	+44	(+53%)	92
BOROONDARA	126	140	139	-14	(-10%)	-13	(-9%)	129
BRIMBANK	182	157	92	+25	(+16%)	+90	(+98%)	146
CAMPASPE	46	28	43	+18	(+64%)	+3	(+7%)	37
CARDINIA	85	110	78	-25	(-23%)	+7	(+9%)	89
CASEY	224	245	231	-21	(-9%)	-7	(-3%)	223
CENTRAL GOLDFIELDS	7	8	5	-1	(-13%)	+2	(+40%)	10
DAREBIN	104	96	118	+8	(+8%)	-14	(-12%)	103
EAST GIPPSLAND	85	60	57	+25	(+42%)	+28	(+49%)	62
FRANKSTON	131	152	137	-21	(-14%)	-6	(-4%)	136
GEELONG	230	231	241	-1	(-0%)	-11	(-5%)	229
GLEN EIRA	174	158	179	+16	(+10%)	-5	(-3%)	161
GREATER DANDENONG	187	216	178	-29	(-13%)	+9	(+5%)	179
HOBSONS BAY	78	49	65	+29	(+59%)	+13	(+20%)	66
HORSHAM	39	42	31	-3	(-7%)	+8	(+26%)	31
HUME	142	141	152	+1	(+1%)	-10	(-7%)	147
KINGSTON	133	122	129	+11	(+9%)	+4	(+3%)	132
KNOX	111	124	120	-13	(-10%)	-9	(-8%)	121
LA TROBE	57	82	63	-25	(-30%)	-6	(-10%)	59
MACEDON RANGES	73	78	87	-5	(-6%)	-14	(-16%)	78
MANNINGHAM	76	59	73	+17	(+29%)	+3	(+4%)	68
MARIBYRNONG	76	105	53	-29	(-28%)	+23	(+43%)	77
MAROONDAH	56	74	78	-18	(-24%)	-22	(-28%)	68
MELBOURNE	247	229	201	+18	(+8%)	+46	(+23%)	203
MELTON	72	81	66	-9	(-11%)	+6	(+9%)	68
MILDURA	44	37	27	+7	(+19%)	+17	(+63%)	34
MITCHELL	99	69	91	+30	(+43%)	+8	(+9%)	79
MONASH	183	159	161	+24	(+15%)	+22	(+14%)	165
MOONEE VALLEY	122	97	87	+25	(+26%)	+35	(+40%)	100
MOORABOOL	92	93	74	-1	(-1%)	+18	(+24%)	98
MORELAND	125	152	131	-27	(-18%)	-6	(-5%)	133
MORNINGTON PENINSULA	167	182	145	-15	(-8%)	+22	(+15%)	164
NILLUMBIK	40	43	36	-3	(-7%)	+4	(+11%)	36
NORTHERN GRAMPPIANS	35	36	29	-1	(-3%)	+6	(+21%)	35
PORT PHILLIP	111	117	93	-6	(-5%)	+18	(+19%)	112
SHEPPARTON	73	63	57	+10	(+16%)	+16	(+28%)	70
SOUTHERN GRAMPPIANS	48	44	45	+4	(+9%)	+3	(+7%)	42
STONNINGTON	112	133	113	-21	(-16%)	-1	(-1%)	117
SURF COAST	55	80	78	-25	(-31%)	-23	(-29%)	77
SWAN HILL	29	21	25	+8	(+38%)	+4	(+16%)	29
WANGARATTA	106	93	109	+13	(+14%)	-3	(-3%)	103
WARRNAMBOOL	94	93	119	+1	(+1%)	-25	(-21%)	85
WELLINGTON	73	86	73	-13	(-15%)	0	(0%)	72
WHITEHORSE	121	118	131	+3	(+3%)	-10	(-8%)	122
WHITTLESEA	160	99	132	+61	(+62%)	+28	(+21%)	125
WODONGA	65	48	69	+17	(+35%)	-4	(-6%)	60
WYNDHAM	140	152	107	-12	(-8%)	+33	(+31%)	124
YARRA	95	108	122	-13	(-12%)	-27	(-22%)	100
YARRA RANGES	162	198	196	-36	(-18%)	-34	(-17%)	189

Note: excludes rejected claims and claims for interstate crashes

Fatalities: Victorian monthly totals since 1951

Year	Jan	Feb	Mar	Apr	May	Jun	Jul	Aug	Sep	Oct	Nov	Dec	Totals
1951							61	59	52	38	29	41	
1952	45	40	54	61	54	69	67	55	44	44	31	20	584
1953	23	28	54	58	49	42	50	37	44	27	36	32	480
1954	44	42	28	60	55	36	63	33	25	52	30	41	509
1955	44	36	45	55	48	56	64	44	44	32	40	40	548
1956	34	48	51	67	53	65	71	47	39	39	44	48	606
1957	50	41	46	58	52	54	57	53	51	46	32	49	589
1958	50	38	42	58	54	41	54	53	57	40	57	52	596
1959	50	57	61	50	75	55	42	48	52	55	63	63	671
1960	49	53	57	76	70	70	67	62	61	77	52	66	760
1961	63	57	68	74	58	68	78	82	59	62	60	65	794
1962	65	41	76	78	72	80	70	77	62	53	64	70	808
1963	67	56	65	85	66	68	77	55	55	58	61	67	780
1964	73	71	78	71	83	89	80	89	67	66	62	75	904
1965	63	64	86	88	80	87	79	69	81	77	68	87	929
1966	75	59	75	103	74	86	87	80	75	66	90	85	955
1967	61	79	91	97	81	71	59	67	70	68	60	83	887
1968	70	78	86	78	73	76	73	77	72	80	81	105	949
1969	79	68	79	87	86	77	87	83	87	83	94	101	1,011
1970	85	84	106	80	87	88	110	106	78	95	68	74	1,061
1971	83	75	77	68	76	86	85	72	78	73	74	76	923
1972	61	62	75	82	75	71	98	85	83	62	80	81	915
1973	75	75	95	85	64	66	61	85	89	88	66	86	935
1974	56	62	81	60	70	73	67	62	53	70	80	72	806
1975	67	65	87	73	97	94	57	75	69	66	71	89	910
1976	79	78	88	78	69	79	60	70	82	78	77	100	938
1977	65	71	89	79	65	79	70	91	68	74	96	107	954
1978	75	54	95	63	64	69	68	77	65	84	83	72	869
1979	63	60	86	75	45	64	66	75	69	79	72	93	847
1980	48	55	66	59	47	56	60	53	45	58	61	49	657
1981	69	60	58	61	74	65	61	63	68	71	59	57	766
1982	55	53	59	59	67	45	47	71	53	69	65	66	709
1983	42	59	53	63	62	61	65	51	59	43	54	52	664
1984	65	48	58	50	56	48	46	50	71	53	55	58	658
1985	56	47	50	65	75	50	51	50	58	61	56	64	683
1986	56	50	70	69	59	53	42	54	54	52	59	51	669
1987	62	43	57	52	63	59	62	49	62	61	55	80	705
1988	49	58	69	54	79	50	54	52	64	59	43	70	701
1989	76	65	80	59	67	73	52	65	82	50	41	66	776
1990	48	44	55	39	56	64	41	34	48	35	40	44	548
1991	45	39	70	30	34	29	44	47	41	36	35	53	503
1992	34	33	34	47	33	29	23	27	28	38	30	40	396
1993	27	40	37	39	44	33	33	27	34	39	43	40	436
1994	36	31	44	35	27	33	29	37	17	27	32	30	378
1995	38	35	26	33	34	41	27	34	34	32	38	46	418
1996	40	47	35	38	28	29	30	35	49	24	33	30	418
1997	36	25	30	30	40	22	39	26	26	29	39	35	377
1998	29	29	32	36	31	22	40	19	37	36	49	30	390
1999	32	31	35	35	34	24	35	26	28	38	29	37	384
2000	32	26	46	32	39	32	33	29	36	29	44	29	407
2001	44	30	31	32	31	41	34	37	35	51	41	37	444
2002	32	31	45	31	45	32	27	25	31	30	31	37	397
2003	21	41	36	28	31	28	20	23	23	24	24	31	330
2004	32	22	30	30	46	28	27	26	22	28	25	27	343
2005	33	27	47	21	29	23	30	25	25	33	17	36	346
2006	24	37	23	23	27	23	25	22	43	20	31	39	337
2007	23	23	32	25	26	28	28	20	23	37	26	41	332
2008	28	20	37	25	25	20	27	27	18	25	26	25	303
2009	31	18	23	32	19	30	19	21	14	28	21	34	290
2010	26	25	23	20	31	26	26	18	17	36	12	28	288
2011	18	20	34	31	30	24	25	14	12	22	30	27	287
2012	30	20	25	19	23	22	18	25	17	33	25	22	282
2013	15	26	24	19									
Ave	49	47	57	55	54	52	52	51	50	51	50	56	625
Max	85	84	106	103	97	94	110	106	89	95	96	107	1,061
Min	15	18	23	19	19	20	19	14	12	20	12	20	282

Fatalities by Week (2007 to 2013)

Week Ending	2007	2008	2009	2010	2011	2012	2013	Cumulative 2013	% Change 2013-2012	12 Month Moving Total
6-Jan	3	1	3	1	2	1	2	2	0%	283
13-Jan	2	8	11	6	1	3	3	5	+67%	283
20-Jan	7	5	6	1	6	9	5	10	+11%	279
27-Jan	5	4	2	9	4	7	4	14	+8%	276
3-Feb	5	8	8	6	4	9	6	20	+18%	273
10-Feb	7	5	1	9	8	4	7	27	+8%	276
17-Feb	4	4	10	5	3	2	4	31	+11%	278
24-Feb	10	4	3	8	5	10	6	37	+12%	274
3-Mar	3	8	5	4	4	4	2	39	+5%	272
10-Mar	9	8	2	6	8	1	5	44	-2%	276
17-Mar	9	5	6	5	6	4	5	49	-4%	277
24-Mar	3	13	3	4	9	12	10	59	-2%	275
31-Mar	8	7	7	8	8	4	3	62	-9%	274
7-Apr	4	10	8	5	5	7	4	66	-10%	271
14-Apr	11	3	5	4	12	6	5	71	-16%	270
21-Apr	4	6	8	6	5	2	5	76	-16%	273
28-Apr	3	6	10	4	6	6	5	81	-16%	272
5-May	7	5	6	4	7	2				
12-May	3	7	7	3	4	10				
19-May	6	4	4	9	7	2				
26-May	8	8	1	6	11	5				
2-Jun	6	6	3	12	4	5				
9-Jun	15	2	7	2	5	4				
16-Jun	3	6	6	7	9	6				
23-Jun	4	4	8	8	3	4				
30-Jun	7	7	6	5	6	7				
7-Jul	2	5	7	8	5	4				
14-Jul	9	10	9	4	10	2				
21-Jul	7	2	2	3	5	4				
28-Jul	6	3	5	5	8	5				
4-Aug	5	8	3	10	2	5				
11-Aug	2	8	3	7	4	2				
18-Aug	2	6	11	3	6	4				
25-Aug	4	3	4	5	1	5				
1-Sep	11	7	1	2	1	10				
8-Sep	3	5	4	3	3	5				
15-Sep	7	3	1	4	3	4				
22-Sep	4	6	7	1	3	6				
29-Sep	8	6	2	6	1	4				
6-Oct	5	6	2	4	5	2				
13-Oct	12	8	2	12	7	8				
20-Oct	6	4	8	7	2	10				
27-Oct	8	4	9	8	3	8				
3-Nov	6	4	8	6	7	5				
10-Nov	6	4	4	5	5	5				
17-Nov	7	7	6	0	12	7				
24-Nov	4	10	6	3	8	7				
1-Dec	7	3	4	3	5	5				
8-Dec	8	4	5	7	7	8				
15-Dec	16	9	5	6	6	7				
22-Dec	5	3	11	6	7	4				
29-Dec	8	9	10	9	6	4				
31-Dec	8	2	5	4	3	6				
Total	332	303	290	288	287	282				

Alcohol Related Fatalities

NOTE: UPDATES TO THIS DATA WERE NOT AVAILABLE AT TIME OF REPORT

- 24% of fatally injured and tested drivers and riders had a BAC at 0.05 g/100ml or over (41 of 172) compared to 25% over the previous 12 month period (43 of 169).
- In Melbourne, 21 drivers/riders fatally injured and tested were at or over 0.05, with 38% of these having a BAC in excess of 0.15 g/100ml. Across rural Victoria, 20 drivers/riders fatally injured and tested were at or over 0.05, with 65% of these having a BAC over 0.15.
- Of the 41 drivers and riders fatally injured and tested at or over 0.05, 15% (6) were aged under 21, 39% (16) were aged 21-29, 27% (11) were aged 30-39 and 20% (8) were aged 40 years and over. In the previous year (43 fatally injured) the corresponding figures were 19% (8), 28% (12), 19% (8) and 35% (15), respectively.

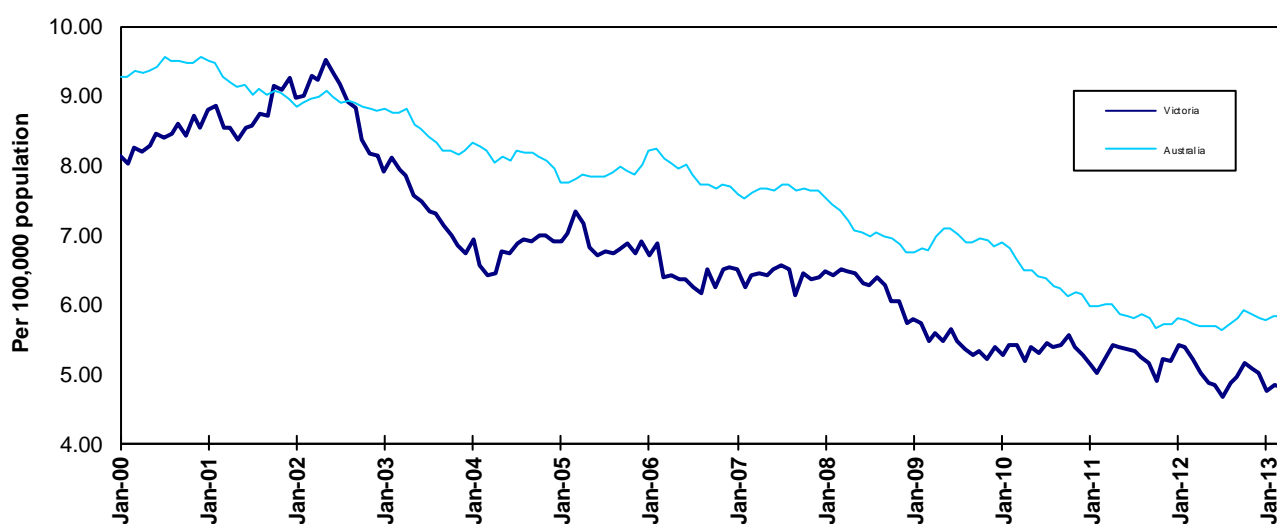
BAC Fatalities (12 months to April 2010)

Category	2010	2009	2008	2010 v 2009		2010 v 2008		5 Year Av
Melbourne Drivers and Riders								
<0.05	55	63	63	(-8)	(-13%)	(-8)	(-13%)	62
[a] at 0.05 & above	21	17	25	(+4)	(+24%)	(-4)	(-16%)	21
% at 0.05 & above	(28%)	(21%)	(28%)					(+25%)
[b] >0.15	8	10	12	(-2)	(-20%)	(-4)	(-33%)	9
%>0.15	(11%)	(13%)	(14%)					(+11%)
[b] as a % of [a]	(38%)	(59%)	(48%)					(+43%)
BAC Unknown	5	3	1	(+2)	(+67%)	(+4)	(+400%)	3
Country Drivers and Riders								
<0.05	76	63	90	(+13)	(+21%)	(-14)	(-16%)	78
[a] at 0.05 & above	20	26	32	(-6)	(-23%)	(-12)	(-38%)	26
% at 0.05 & above	(21%)	(29%)	(26%)					(+25%)
[b] >0.15	13	17	20	(-4)	(-24%)	(-7)	(-35%)	17
%>0.15	(14%)	(19%)	(16%)					(+16%)
[b] as a % of [a]	(65%)	(65%)	(63%)					(+64%)
BAC Unknown	7	2	1	(+5)	(+250%)	(+6)	(+600%)	5
Victorian Total Drivers and Riders								
<0.05	131	126	153	(+5)	(+4%)	(-22)	(-14%)	140
[a] at 0.05 & above	41	43	57	(-2)	(-5%)	(-16)	(-28%)	47
% at 0.05 & above	(24%)	(25%)	(27%)					(+25%)
[b] >0.15	21	27	32	(-6)	(-22%)	(-11)	(-34%)	26
%>0.15	(12%)	(16%)	(15%)					(+14%)
[b] as a % of [a]	(51%)	(63%)	(56%)					(+54%)
BAC Unknown	12	5	2	(+7)	(+140%)	(+10)	(+500%)	7
Victorian Total Pedestrians								
<0.05	32	35	38	(-3)	(-9%)	(-6)	(-16%)	33
[a] at 0.05 & above	8	21	9	(-13)	(-62%)	(-1)	(-11%)	14
% at 0.05 & above	(20%)	(38%)	(19%)					(+30%)
[b] >0.15	3	10	8	(-7)	(-70%)	(-5)	(-63%)	9
%>0.15	(8%)	(18%)	(17%)					(+19%)
[b] as a % of [a]	(38%)	(48%)	(89%)					(+62%)
BAC Unknown	6	4	2	(+2)	(+50%)	(+4)	(+200%)	4

The National Picture

State	Fatalities (12 months to April)					2013 v 2012	
	2013	2012	2011	2010			
NSW	363	373	373	457	-10	(-3%)	
VIC	271	278	297	292	-7	(-3%)	
QLD	296	273	257	298	+23	(+8%)	
SA	96	99	109	125	-3	(-3%)	
WA	178	174	203	175	+4	(+2%)	
TAS	34	22	29	54	+12	(+55%)	
NT	47	50	44	36	-3	(-6%)	
ACT	14	1	14	17	+13	(+1300%)	
AUST TOTAL	1,299	1,270	1,326	1,454	+29	(+2%)	
AUST minus VIC	1,028	992	1,029	1,162	+36	(+4%)	

State	Fatalities per 10,000 registered vehicles (12 months to April)			Fatalities per 100,000 population (12 months to April)		
	2013	2012	2011	2013	2012	2011
NSW	0.74	0.77	0.79	4.96	5.15	5.20
VIC	0.62	0.65	0.71	4.79	5.00	5.41
QLD	0.83	0.79	0.76	6.45	6.08	5.79
SA	0.75	0.78	0.87	5.78	6.03	6.68
WA	0.88	0.89	1.07	7.25	7.34	8.77
TAS	0.77	0.51	0.70	6.64	4.30	5.70
NT	3.26	3.57	3.19	19.91	21.58	19.08
ACT	0.51	0.04	0.54	3.71	0.27	3.86
AUST TOTAL	0.76	0.76	0.81	5.73	5.67	5.99
AUST minus VIC	0.81	0.80	0.85	6.03	5.89	6.17



Victoria v Australia - 12 Month Moving Fatality Rate

Booze-Bus Random Breath Testing*

12 months to March 2013 (monthly totals)

	2012						2013					
	Apr	May	Jun	Jul	Aug	Sep	Oct	Nov	Dec	Jan	Feb	March
Melbourne	89,651	91,052	79,523	79,063	79,829	97,391	91,425	96,830	98,007	93,928	79,064	86,312
Country	7,403	7,539	7,285	3,932	7,314	4,599	10,101	16,705	13,751	7,046	7,258	8,046
Vic Total	97,054	98,591	86,808	82,995	87,143	101,990	101,526	113,535	111,758	100,974	86,322	94,358

12 months to March 2013 vs previous 12 months

	2013	2012	2011	2013 v 2012	2013 v 2011
Melbourne	1,062,075	958,953	1,016,549	+103122 (+11%)	+45526 (+4%)
Country	100,979	138,158	189,177	-37179 (-27%)	-88198 (-47%)
Vic Total	1,163,054	1,097,111	1,205,726	+65943 (+6%)	-42672 (-4%)

*Due to police industrial action, reliable random breath testing data is not available from May to October 2011. For the rolling 12 month totals, 2010 data has been used as a substitute in the relevant months.

Mobile Safety Camera Data

Speed Infringements Issued from Mobile Cameras (monthly totals)

Monthly Average = 43,858

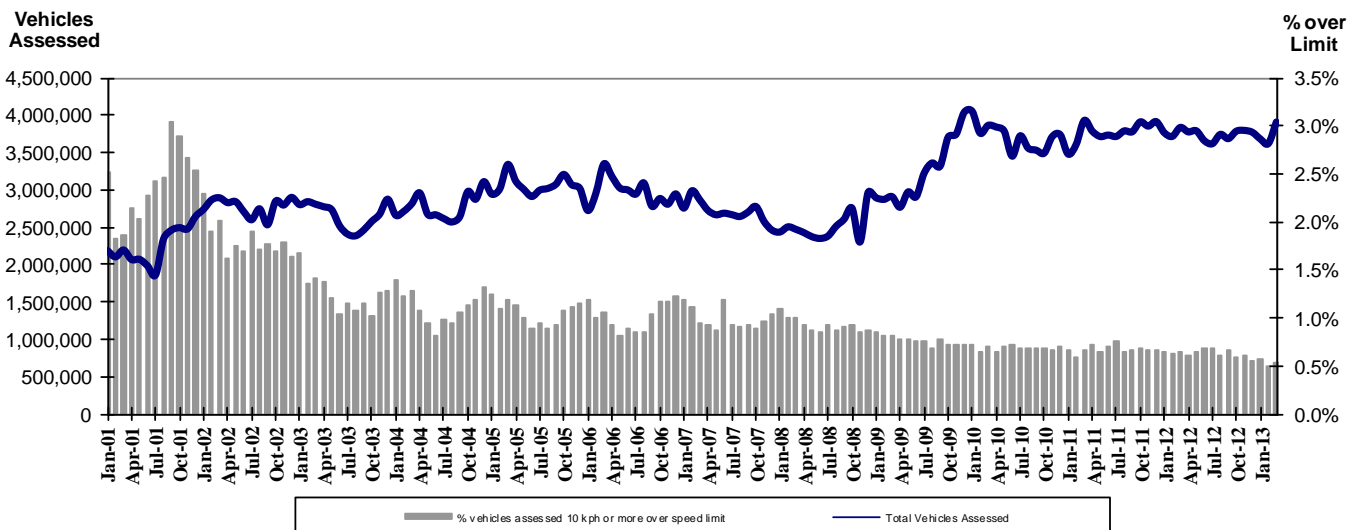
	2012						2013					
	Apr	May	Jun	Jul	Aug	Sep	Oct	Nov	Dec	Jan	Feb	Mar
	42,935	50,292	45,729	48,023	45,032	42,429	45,757	45,777	29,434	52,184	39,407	39,296

Excessive Speed Infringements (ESI) Issued from Mobile Cameras (monthly totals)

Monthly Average = 346

	2012						2013					
	Apr	May	Jun	Jul	Aug	Sep	Oct	Nov	Dec	Jan	Feb	Mar
	374	360	341	352	368	353	396	356	256	363	341	292

Notes: An ESI is defined as 25km/h over the speed limit except in a 110km/h zone where it is 20km/h over the limit.



Mobile Safety Cameras – Vehicles assessed and percentage of vehicles assessed 10km/h or more over speed limit per month

Explanations and References

Hi-Alc time is those times of the day and week (*shaded* in the table below) when casualty crashes are ten times more likely to involve alcohol than casualty crashes at other (Lo-Alc time) times.

	12am - 6am	6am - 8am	8am - 10am	10am - 2pm	2pm - 4pm	4pm - 6pm	6pm - 12pm
Monday							
Tuesday							
Wednesday							
Thursday							
Friday							
Saturday							
Sunday							

Police Service Areas align with Local Government Areas. Most Police Service Areas are equivalent to a single Local Government Area, while the remainder comprise two or three Local Government Areas.

Police Service Area	Local Government Area(s)	Police Service Area	Local Government Area(s)
BALLARAT	BALLARAT, PYRENEES	MAROONDAH	MAROONDAH
BANYULE	BANYULE	MELBOURNE	MELBOURNE
BASS COAST	BASS COAST, SOUTH GIPPSLAND	MELTON	MELTON
BAW BAW	BAWBAW	MILDURA	MILDURA
BENALLA	BENALLA, MANSFIELD, MURRINDINDI	MITCHELL	MITCHELL, STRATHBOGIE
BENDIGO	GREATER BENDIGO	MONASH	MONASH
BOROONDARA	BOROONDARA	MOONEE VALLEY	MOONEE VALLEY
BRIMBANK	BRIMBANK	MOORABOOL	GOLDEN PLAINS, HEPBURN, MOORABOOL
CAMPASPE	CAMPASPE	MORELAND	MORELAND
CARDINIA	CARDINIA	MORNINGTON PENINSULA	MORNINGTON PENINSULA
CASEY	CASEY	NILLUMBIK	NILLUMBIK
CENTRAL GOLDFIELDS	CENTRAL GOLDFIELDS, LODDON	NORTHERN GRAMPIANS	ARARAT, NORTHERN GRAMPIANS, YARRIAMIACK
GREATER DANDENONG	GREATER DANDENONG	PORT PHILLIP	PORT PHILLIP
DAREBIN	DAREBIN	SHEPPARTON	GREATER SHEPPARTON
EAST GIPPSLAND	EAST GIPPSLAND	SOUTHERN GRAMPIANS	GLENELG, SOUTHERN GRAMPIANS
FRANKSTON	FRANKSTON	STONNINGTON	STONNINGTON
GEELONG	GREATER GEELONG, QUEENSCLIFF	SURFCOAST	SURFCOAST, COLAC OTWAY
GLENEIRA	GLENEIRA, BAYSIDE	SWANHILL	BULOKE, GANNAWARRA, SWAN HILL
HOBSONS BAY	HOBSONSBAY	WANGARATTA	ALPINE, MOIRA, WANGARATTA
HORSHAM	HINDMARSH, HORSHAM, WESTWIMMERA	WARRNAMBOOL	CORANGAMITE, MOYNE, WARRNAMBOOL
HUME	HUME	WELLINGTON	WELLINGTON
KINGSTON	KINGSTON	WHITEHORSE	WHITEHORSE
KNOX	KNOX	WHITTLESEA	WHITTLESEA
LATROBE	LATROBE	WODONGA	INDIGO, TOWONG, WODONGA
MACEDON RANGES	MOUNT ALEXANDER, MACEDON RANGES	WYNDHAM	WYNDHAM
MANNINGHAM	MANNINGHAM	YARRA	YARRA
MARIBYRNONG	MARIBYRNONG	YARRA RANGES	YARRA RANGES

Useful Internet Sites

TAC Sites

- TAC Safety (Road Safety) www.tacsafety.com.au
- TAC How safe is your car www.howsafeisyourcar.com.au
- TAC Learners Log www.learnerslog.com.au
- TAC Motorcycle Safety Website www.spokes.com.au
- TAC Corporate site www.tac.vic.gov.au

Victorian Sites:

- VicRoads www.vicroads.vic.gov.au
- Victoria Police www.police.vic.gov.au
- Parliamentary Road Safety Committee www.parliament.vic.gov.au/rsc/
- ARRB Transport Research www.arrb.com.au
- RACV www.racv.com.au
- Monash University Accident Research Centre www.monash.edu.au/muarc
- Roadsafe www.roadsafe.org.au
- Cameras Save Lives www.camerassavelives.vic.gov.au

National and Interstate Sites:

- Australian Transport Safety Bureau www.atsb.gov.au
- Roads and Traffic Authority (NSW) www.rta.nsw.gov.au
- Queensland Transport - Road Safety transport.qld.gov.au/Home/Safety/Road
- Department of Transport (SA) www.transport.sa.gov.au/index.htm
- Main Roads Western Australia - Road Safety www.mrwa.wa.gov.au

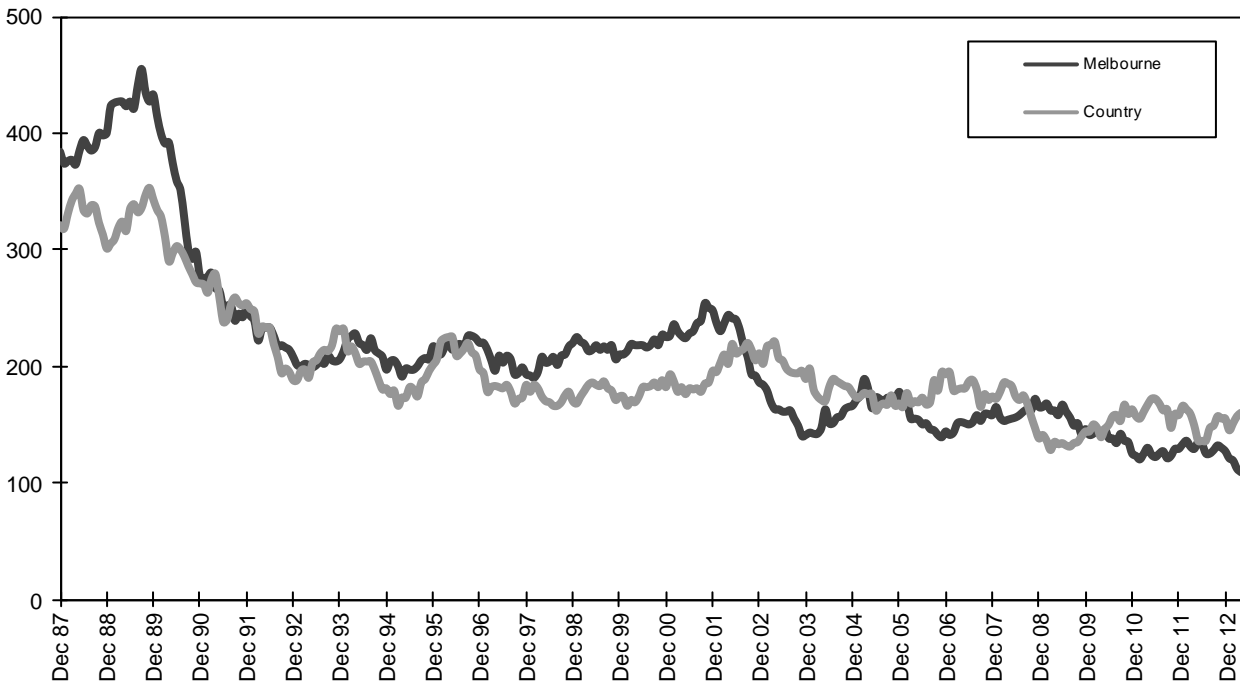
International Sites:

- National Highway Traffic Safety Admin (USA) www.nhtsa.dot.gov
- Swedish Road and Transport Institute (VTI) www.vti.se
- SWOV Institute for Road Safety Research www.swov.nl

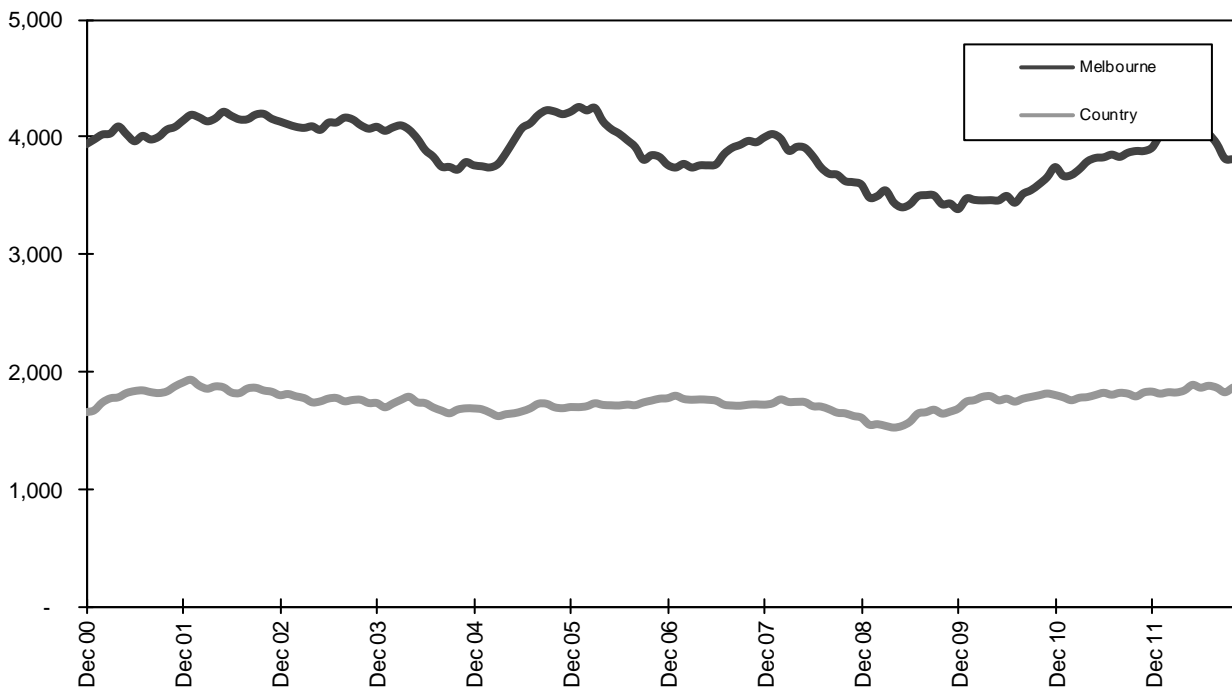
Related Sites:

- Australian Drug Foundation www.adf.org.au
- Amy Gillett Foundation www.amygillett.org.au

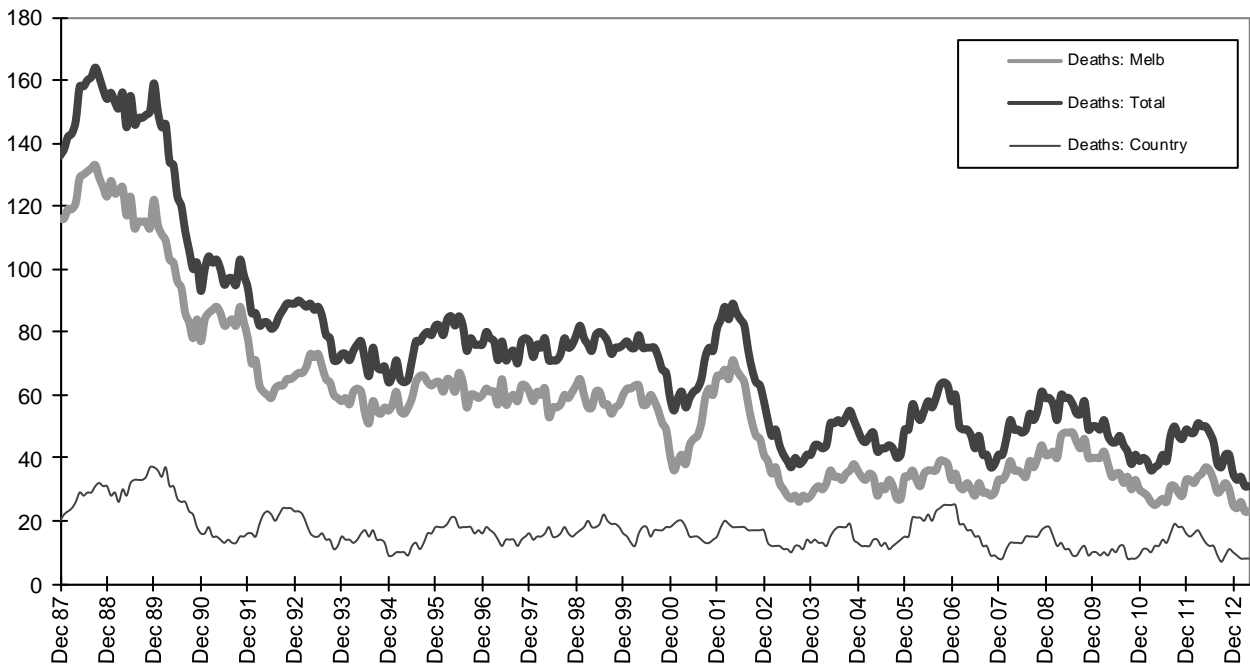
Figures



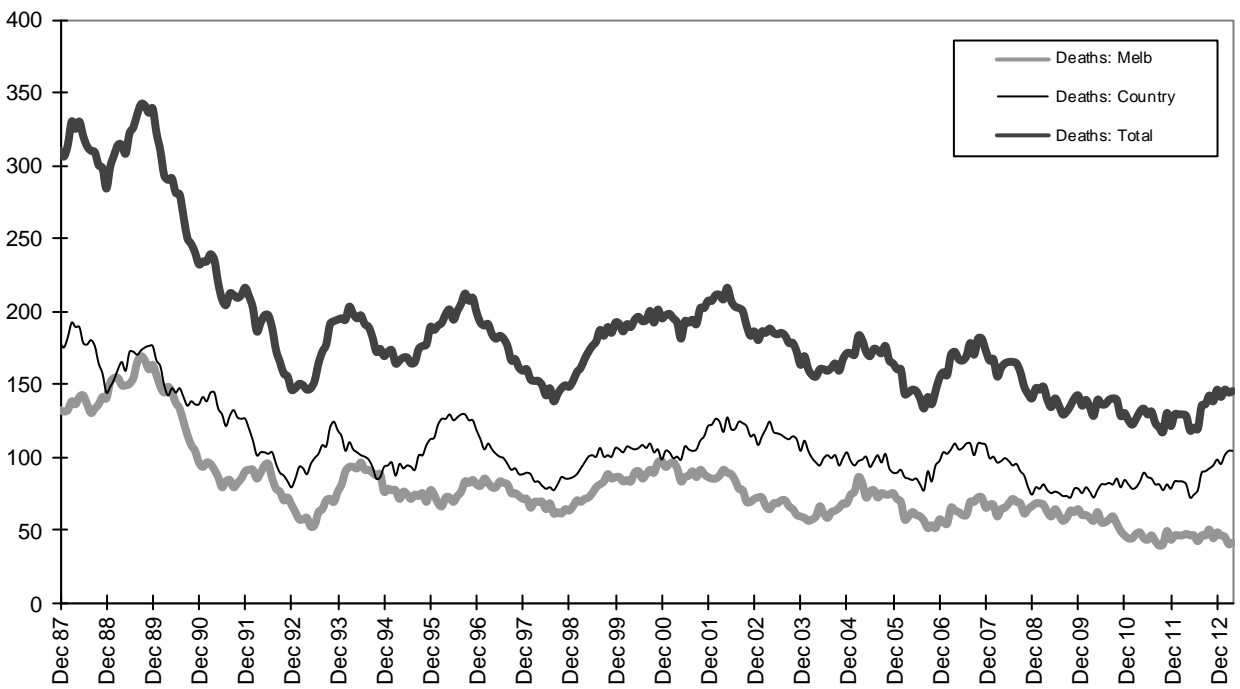
Graph 1a - Melbourne/country fatalities



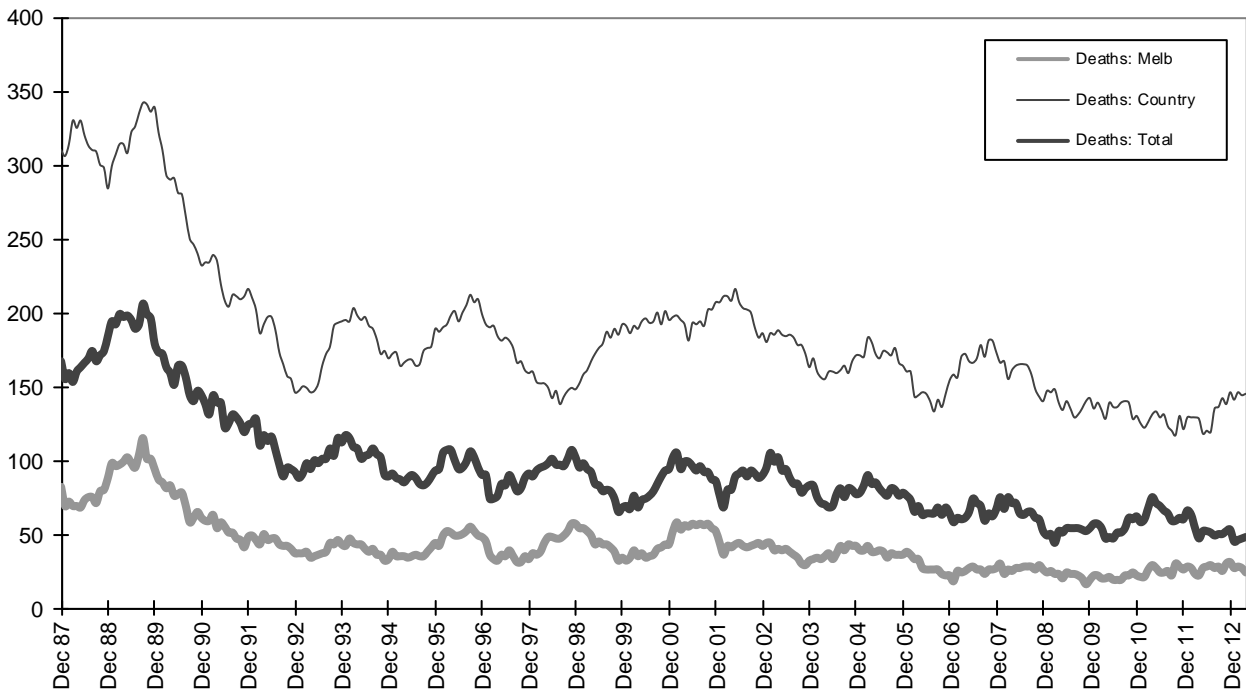
Graph 1b - Melbourne/country Claims involving an acute hospital admission



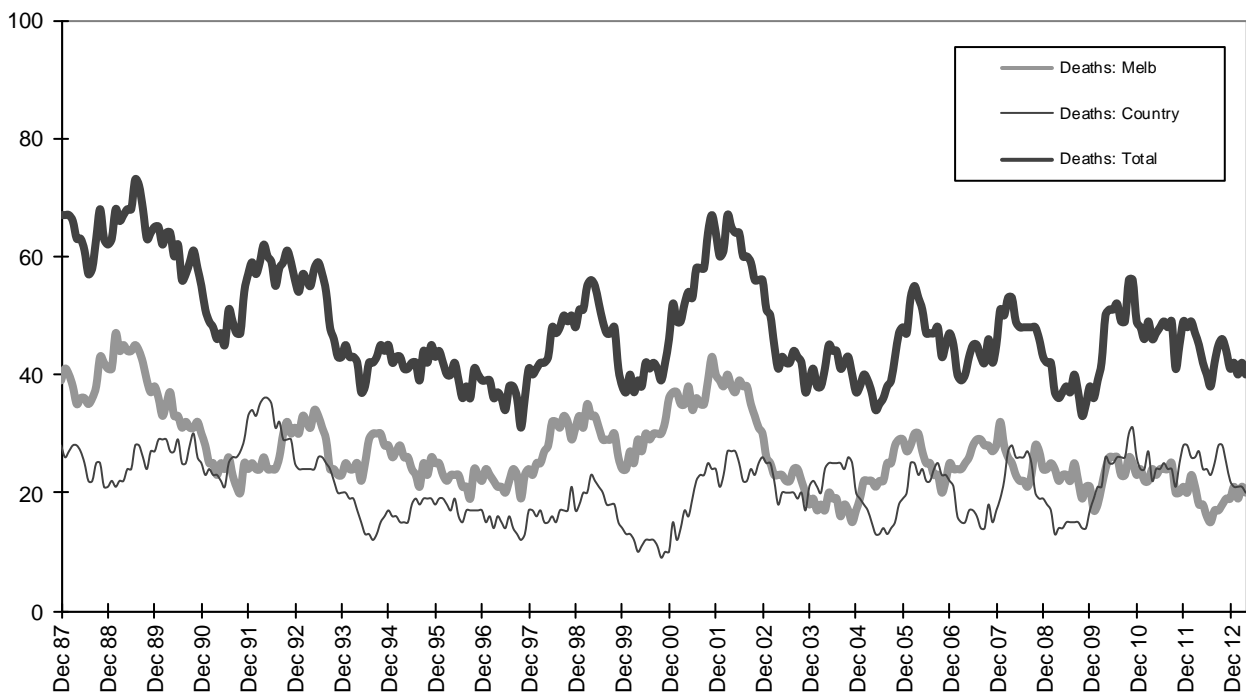
Graph 2a - Pedestrian fatalities (Melbourne/country)



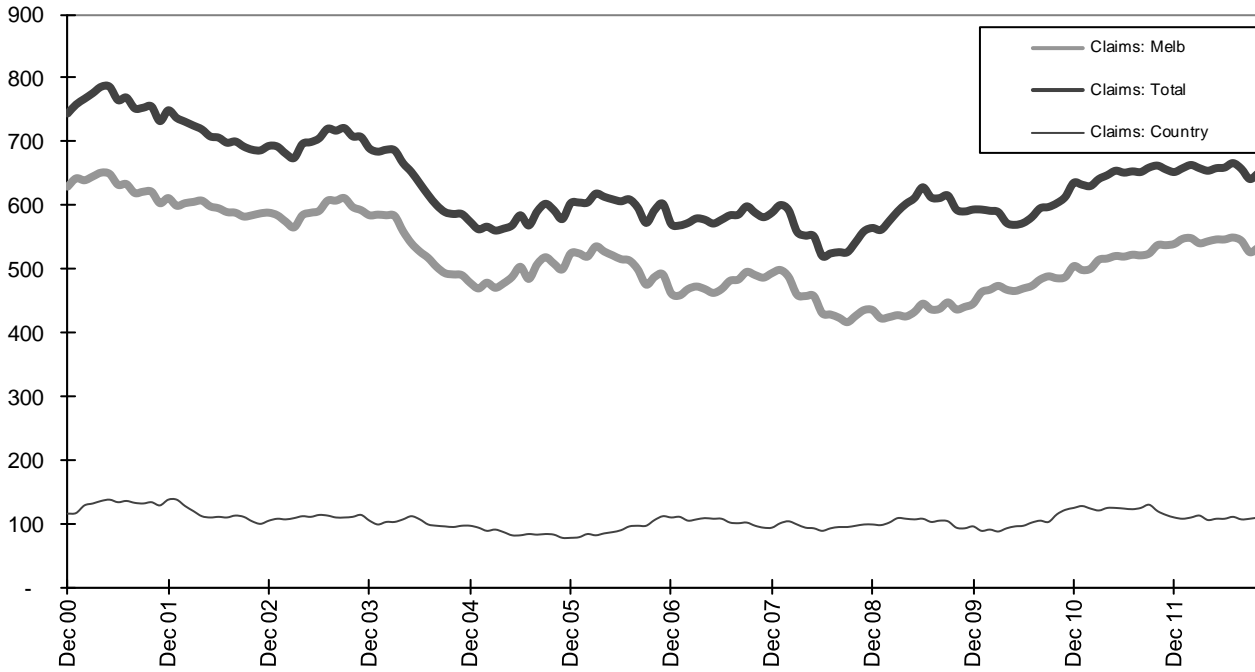
Graph 2b - Driver fatalities (Melbourne/country)



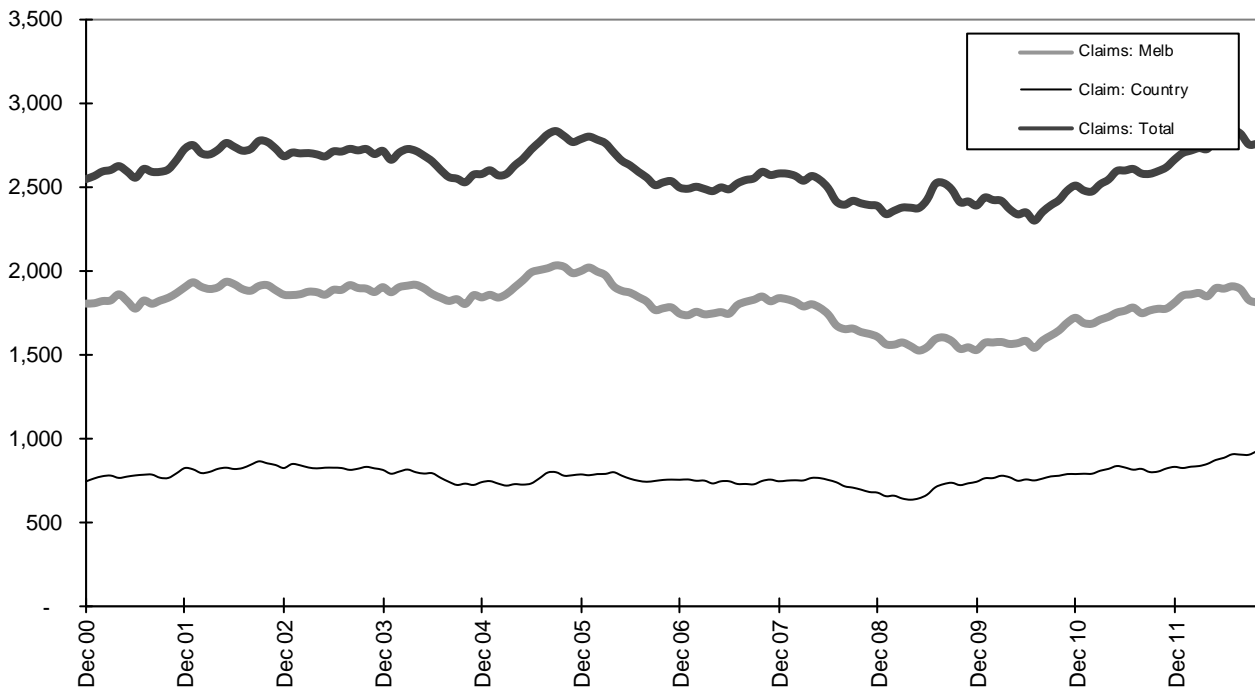
Graph 2c - Passenger fatalities (Melbourne/country)



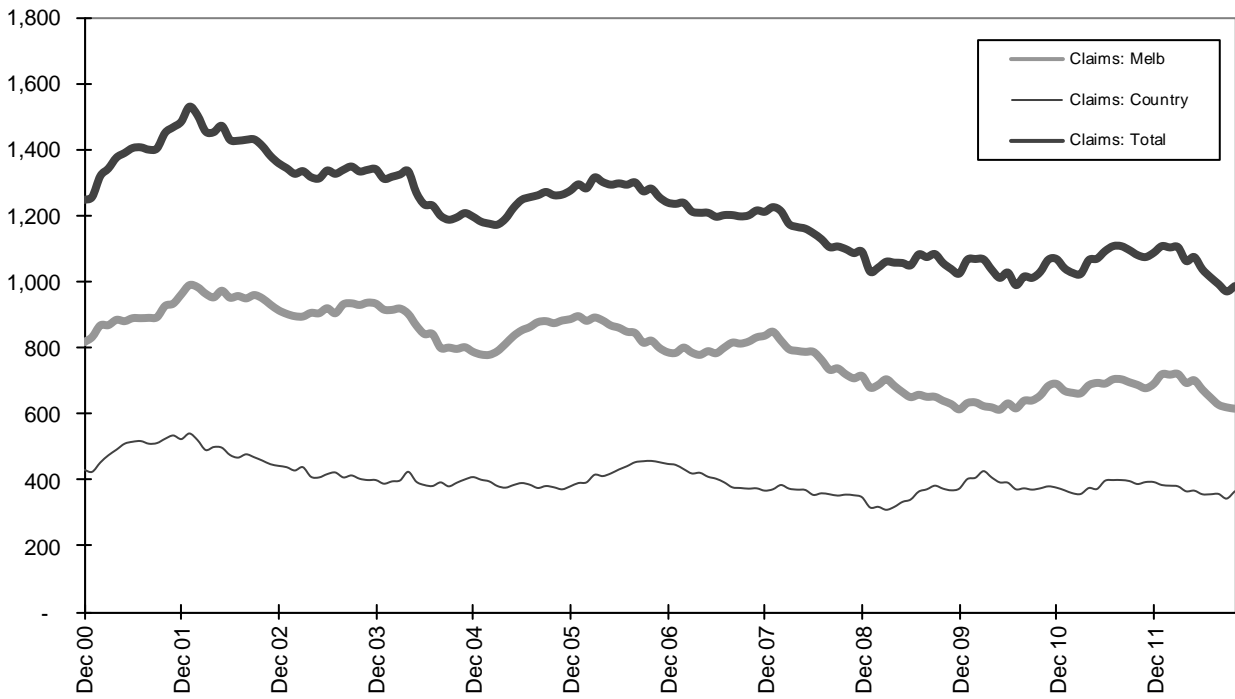
Graph 2d - Motorcyclist fatalities (Melbourne/country)



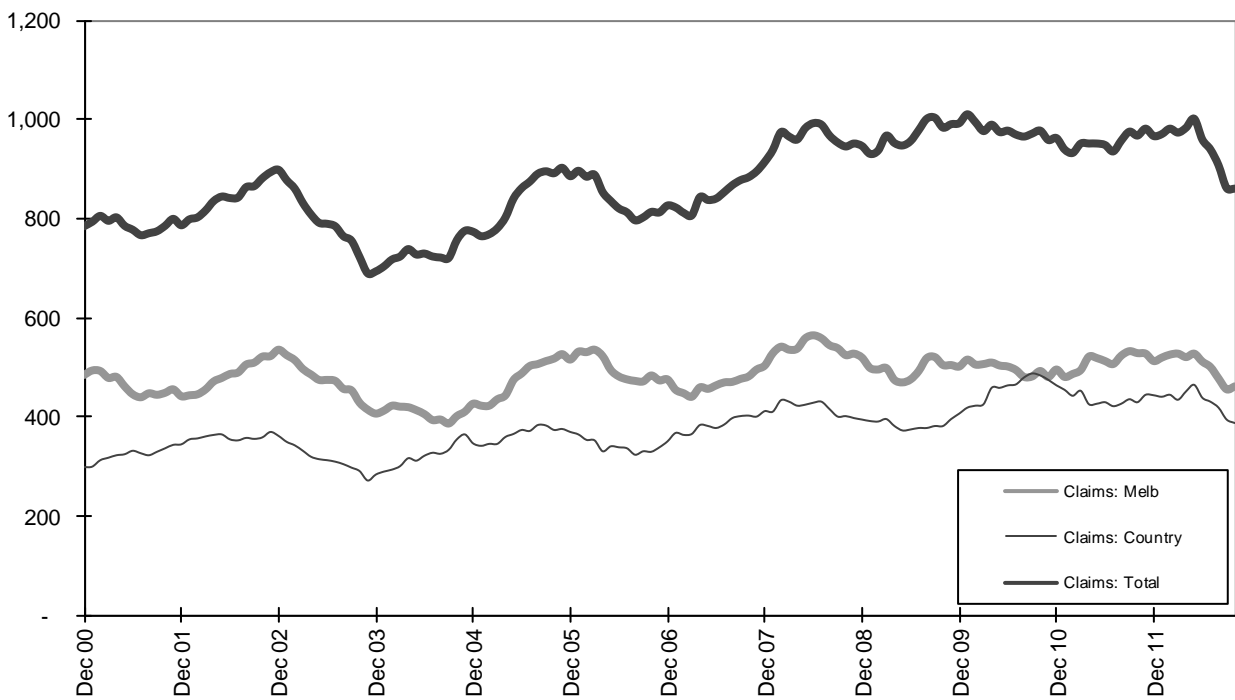
Graph 3a - Pedestrian Claims involving an acute hospital admission (Melbourne/country)



Graph 3b - Driver Claims involving an acute hospital admission (Melbourne/country)



Graph 3c - Passenger Claims involving an acute hospital admission (Melbourne/country)



Graph 3d - Motorcyclist Claims involving an acute hospital admission (Melbourne/country)