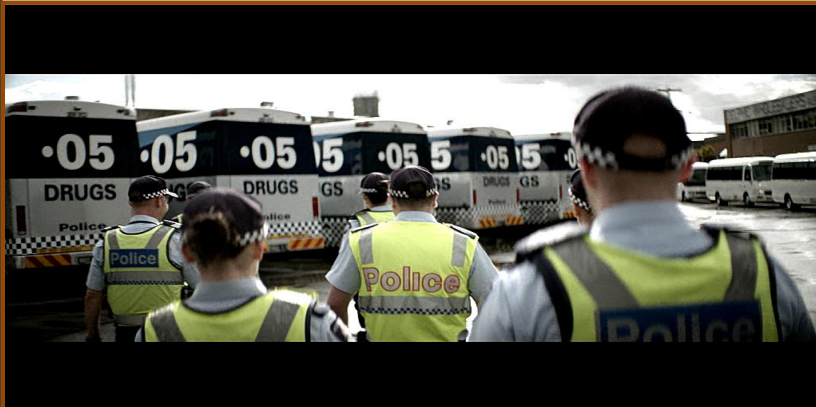
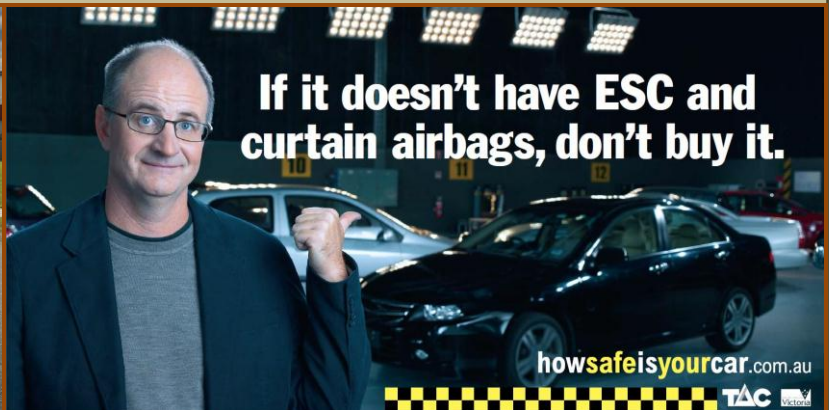


ROAD SAFETY STATISTICAL SUMMARY

June 2015



**TRANSPORT
ACCIDENT
COMMISSION**

60 Brougham Street
Geelong Vic 3220
PO Box 742
Geelong Vic 3220
Ausdoc DX 216079 Geelong

Telephone 1300 654 329
STD Toll Free 1800 332 556
Fax: 03 9656 9300
www.tac.vic.gov.au
ABN 22 033 947 623

Contents

Status Report.....	4
Fatalities.....	4
Claims involving an acute hospital admission*	5
Fatalities: 12 months to June 2015	6
Claims involving acute hospitalisation over 14 days: 12 months to December 2014 (claim acceptance date)..	8
Claims involving an acute hospital admission: 12 months to December 2014 (claim acceptance date)	10
Fatalities: Victorian monthly totals since 1951	12
Fatalities by Week (2009 to 2015).....	13
The National Picture.....	14
Booze-Bus Random Breath Testing	15
Mobile Safety Camera Data	15
Explanations and References	16
Useful Internet Sites	17
Figures	18

Note about the data in this report

- All data provided in this report is the data most recently available at time of production. Fatalities, breath-test data and safety camera data are updated to the end of report month. A 6-month lag applies to TAC claims data.
- Reported data will have one extra day of exposure for leap years.
- Data is subject to revision as additional information about known accidents/claims is received, and as new accident/claim reports are received and processed.

*An acute hospital admission refers to a hospital admission that occurred within 7 days of accident.

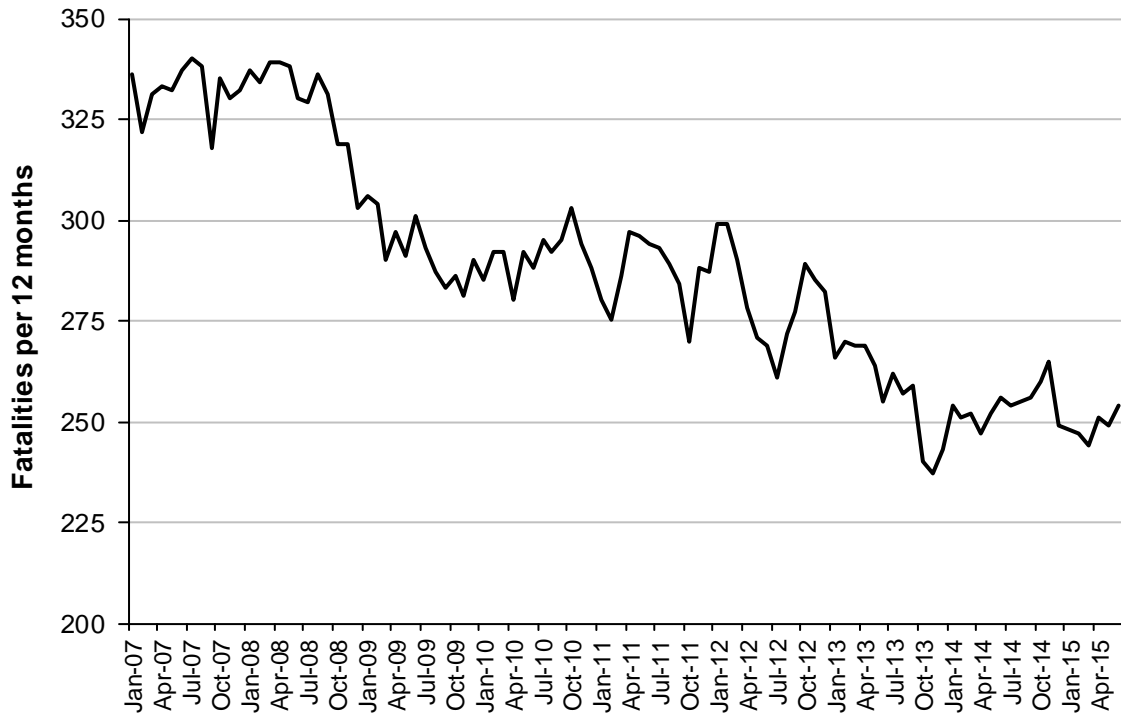
Status Report

Fatalities

- The rolling 12 month number of road fatalities in June 2015 stands at 254, 1% less than in 2014 (256).
- 22 people were fatally injured in June 2015 on Victorian roads. This compares to 17 in June 2014.

Fatalities (rolling 12 month, to end June 2015)

Category	2015	2014	2013	2015 v 2014		2014 v 2013		5 Year Av
Fatal Injuries (Rolling 12 Month Total)								
Fatal (to June)	254	256	255	-2	(-1%)	-1	(-0%)	266
per 10,000 veh	0.56	0.57	0.58	-0.01	(-2%)	-0.02	(-3%)	0.61
per 100,000 pop	4.31	4.42	4.49	-0.11	(-2%)	-0.18	(-4%)	4.67
Accidents (Rolling 12 Month Total)								
Fatal (to June)	234	229	235	5	(+2%)	-1	(-0%)	243
per 10,000 veh	0.51	0.51	0.54	0.00	(+0%)	-0.03	(-6%)	0.55
per 100,000 pop	3.97	3.96	4.14	0.01	(+0%)	-0.17	(-4%)	4.27

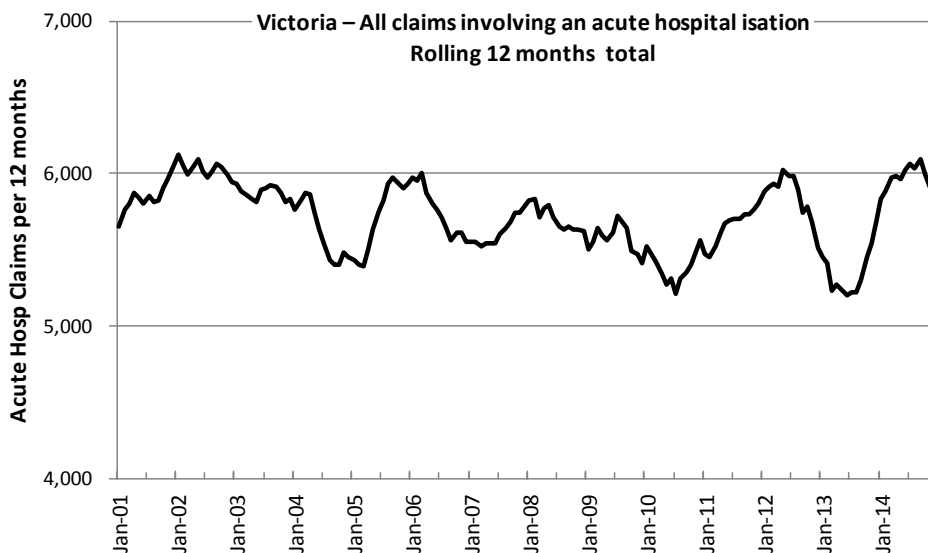
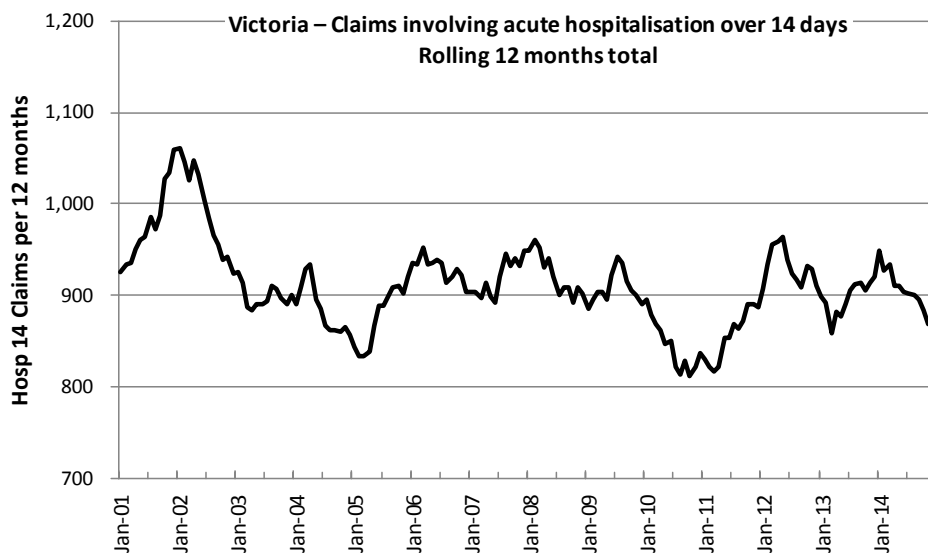


Victoria – Fatalities, rolling 12 months total

Claims involving an acute hospital admission*

(by claim acceptance date – rolling 12 month, to midnight 31 December 2014)

Category	2014	2013	2012	2014 v 2013		2014 v 2012		5 Year Av
Claims involving an acute hospitalisation over 14 days (Rolling 12 Month Total)								
Claims (to December)	879	921	911	-42	(-5%)	-32	(-4%)	887
per 100,000 pop	15.0	16.1	16.2	-1.1	(-7%)	-1.2	(-7%)	15.8
per 10,000 veh	1.9	2.1	2.1	-0.2	(-10%)	-0.2	(-10%)	2.1
All claims involving an acute hospitalisation (Rolling 12 Month Total)								
Claims (to December)	5,959	5,681	5,511	+278	(+5%)	+448	(+8%)	5,703
per 100,000 pop	102.0	99.0	98.0	+3.0	(+3%)	+4.0	(+4%)	100.9
per 10,000 veh	13.2	12.8	12.7	+0.4	(+3%)	+0.5	(+4%)	13.2



*An acute hospital admission refers to a hospital admission that occurred within 7 days of accident.

Fatalities: 12 months to June 2015

Category	2015	2014	2013	2015 v 2014		2015 v 2013		5 Year Av
Overview								
Fatalities	254	256	255	-2	(-1%)	-1	(-0%)	266
Accidents	234	229	235	+5	(+2%)	-1	(-0%)	243
Sex								
Female	71	77	78	-6	(-8%)	-7	(-9%)	77
Male	183	179	177	+4	(+2%)	+6	(+3%)	189
Roaduser								
Bicyclist	11	7	6	+4	(+57%)	+5	(+83%)	8
Driver	121	120	137	+1	(+1%)	-16	(-12%)	125
Motorcyclist	31	34	40	-3	(-9%)	-9	(-23%)	39
Passenger	53	52	40	+1	(+2%)	+13	(+33%)	53
Pedestrian	38	43	32	-5	(-12%)	+6	(+19%)	40
Location								
Melbourne	120	109	103	+11	(+10%)	+17	(+17%)	117
Rural Victoria	134	147	152	-13	(-9%)	-18	(-12%)	148
Agegroup								
0-4	3	2	2	+1	NA	+1	(+50%)	3
5-15	5	9	7	-4	(-44%)	-2	(-29%)	7
16-17	15	2	2	+13	(+650%)	+13	(+650%)	7
18-20	17	14	20	+3	(+21%)	-3	(-15%)	24
21-25	28	26	32	+2	(+8%)	-4	(-13%)	31
26-29	23	18	13	+5	(+28%)	+10	(+77%)	20
30-39	27	40	34	-13	(-33%)	-7	(-21%)	34
40-49	34	31	29	+3	(+10%)	+5	(+17%)	32
50-59	25	35	33	-10	(-29%)	-8	(-24%)	31
60-69	27	27	38	0	(0%)	-11	(-29%)	29
70+	47	52	43	-5	(-10%)	+4	(+9%)	47
Altime								
High (Melb)	65	52	60	+13	(+25%)	+5	(+8%)	62
High (Rural)	59	56	72	+3	(+5%)	-13	(-18%)	69
High (Vic)	124	108	132	+16	(+15%)	-8	(-6%)	131
Low (Melb)	55	57	43	-2	(-4%)	+12	(+28%)	55
Low (Rural)	75	91	80	-16	(-18%)	-5	(-6%)	79
Low (Vic)	130	148	123	-18	(-12%)	+7	(+6%)	135
Accident Type								
Intersection								
Adjacent direction	30	38	30	-8	(-21%)	0	(0%)	31
Opposing direction	11	5	3	+6	(+120%)	+8	(+267%)	6
Mid-block/other								
Head on	35	43	43	-8	(-19%)	-8	(-19%)	38
Same direction	10	13	14	-3	(-23%)	-4	(-29%)	13
Manoeuvre/o'taking	14	12	11	+2	(+17%)	+3	(+27%)	14
On path	3	8	4	-5	(-63%)	-1	(-25%)	6
Single vehicle	109	88	111	+21	(+24%)	-2	(-2%)	110
Other (incl peds)	42	49	39	-7	(-14%)	+3	(+8%)	47

Fatalities: 12 months to June 2015 – Continued

Category	2015	2014	2013	2015 v 2014		2015 v 2013		5 Year Av
Police Service Area (based on Local Government Area (see p.13))								
BALLARAT	5	6	4	-1	(-17%)	+1	(+25%)	6
BANYULE	2	1	3	+1	(+100%)	-1	(-33%)	2
BASS COAST	6	11	3	-5	(-45%)	+3	(+100%)	7
BAW BAW	2	7	7	-5	(-71%)	-5	(-71%)	6
BENALLA	14	10	10	+4	(+40%)	+4	(+40%)	9
BENDIGO	5	3	9	+2	(+67%)	-4	(-44%)	6
BOROONDARA	2	3	5	-1	(-33%)	-3	(-60%)	3
BRIMBANK	4	7	6	-3	(-43%)	-2	(-33%)	6
CAMPASPE	4	5	8	-1	(-20%)	-4	(-50%)	5
CARDINIA	8	6	1	+2	(+33%)	+7	(+700%)	7
CASEY	4	7	6	-3	(-43%)	-2	(-33%)	6
CENTRAL GOLDFIELDS	1	5	1	-4	(-80%)	0	(0%)	3
DAREBIN	2	3	1	-1	(-33%)	+1	(+100%)	3
EAST GIPPSLAND	8	3	5	+5	(+167%)	+3	(+60%)	6
FRANKSTON	5	2	0	+3	(+150%)	+5		3
GEELONG	7	3	14	+4	(+133%)	-7	(-50%)	9
GLEN EIRA	5	4	6	+1	(+25%)	-1	(-17%)	5
GREATER DANDENONG	6	2	5	+4	(+200%)	+1	(+20%)	4
HOBSONS BAY	0	2	1	-2	(-100%)	-1	(-100%)	1
HORSHAM	1	2	4	-1	(-50%)	-3	(-75%)	4
HUME	6	2	12	+4	(+200%)	-6	(-50%)	6
KINGSTON	2	6	6	-4	(-67%)	-4	(-67%)	5
KNOX	7	4	2	+3	(+75%)	+5	(+250%)	3
LA TROBE	4	4	7	0	(0%)	-3	(-43%)	5
MACEDON RANGES	9	7	6	+2	(+29%)	+3	(+50%)	6
MANNINGHAM	0	1	3	-1	(-100%)	-3	(-100%)	1
MARIBYRNONG	3	1	5	+2	(+200%)	-2	(-40%)	2
MAROONDAH	3	0	2	+3		+1	(+50%)	3
MELBOURNE	8	2	2	+6	(+300%)	+6	(+300%)	4
MELTON	6	10	3	-4	(-40%)	+3	(+100%)	6
MILDURA	1	7	2	-6	(-86%)	-1	(-50%)	3
MITCHELL	9	6	9	+3	(+50%)	0	(0%)	8
MONASH	2	4	4	-2	(-50%)	-2	(-50%)	4
MOONEE VALLEY	3	5	1	-2	(-40%)	+2	(+200%)	2
MOORABOOL	7	7	9	0	(0%)	-2	(-22%)	8
MORELAND	5	3	3	+2	(+67%)	+2	(+67%)	4
MORNINGTON PENINSULA	11	7	1	+4	(+57%)	+10	(+1000%)	7
NILLUMBIK	3	0	0	+3		+3		2
NORTHERN GRAMPPIANS	2	7	6	-5	(-71%)	-4	(-67%)	4
PORT PHILLIP	0	4	1	-4	(-100%)	-1	(-100%)	2
SHEPPARTON	4	2	8	+2	(+100%)	-4	(-50%)	6
SOUTHERN GRAMPPIANS	7	4	5	+3	(+75%)	+2	(+40%)	5
STONNINGTON	4	3	2	+1	(+33%)	+2	(+100%)	2
SURF COAST	7	4	4	+3	(+75%)	+3	(+75%)	7
SWAN HILL	4	9	5	-5	(-56%)	-1	(-20%)	6
WANGARATTA	3	10	12	-7	(-70%)	-9	(-75%)	10
WARRNAMBOOL	10	15	4	-5	(-33%)	+6	(+150%)	8
WELLINGTON	4	7	4	-3	(-43%)	0	(0%)	5
WHITEHORSE	4	3	1	+1	(+33%)	+3	(+300%)	4
WHITTLESEA	3	5	4	-2	(-40%)	-1	(-25%)	5
WODONGA	9	3	5	+6	(+200%)	+4	(+80%)	5
WYNDHAM	7	3	10	+4	(+133%)	-3	(-30%)	6
YARRA	1	0	2	+1		-1	(-50%)	2
YARRA RANGES	5	9	6	-4	(-44%)	-1	(-17%)	7

Claims involving acute hospitalisation over 14 days: 12 months to December 2014 (claim acceptance date)

Category	2014	2013	2012	2014 v 2013	2014 v 2012	5 Year Av
Overview						
Claims	879	921	911	-42 (-5%)	-32 (-4%)	887
Sex						
Female	348	385	405	-37 (-10%)	-57 (-14%)	361
Male	530	536	505	-6 (-1%)	+25 (+5%)	526
Roaduser						
Driver	350	382	375	-32 (-8%)	-25 (-7%)	351
Passenger	133	150	151	-17 (-11%)	-18 (-12%)	142
Motorcyclist	161	142	154	+19 (+13%)	+7 (+5%)	160
Pedestrian	168	205	171	-37 (-18%)	-3 (-2%)	178
Cyclist	36	26	36	+10 (+38%)	0 (0%)	36
Train/Tram	11	3	11	+8 (+267%)	0 (0%)	7
Location*						
Melbourne	554	583	597	-29 (-5%)	-43 (-7%)	569
Rural Victoria	304	332	311	-28 (-8%)	-7 (-2%)	311
Agegroup						
0-4	3	3	1	0 (0%)	+2 (+200%)	3
5-15	16	10	11	+6 (+60%)	+5 (+45%)	14
16-17	13	15	21	-2 (-13%)	-8 (-38%)	18
18-20	54	66	56	-12 (-18%)	-2 (-4%)	57
21-25	81	79	81	+2 (+3%)	0 (0%)	81
26-29	53	41	48	+12 (+29%)	+5 (+10%)	52
30-39	106	101	119	+5 (+5%)	-13 (-11%)	108
40-49	109	111	129	-2 (-2%)	-20 (-16%)	116
50-59	105	105	98	0 (0%)	+7 (+7%)	101
60-69	94	112	110	-18 (-16%)	-16 (-15%)	102
70+	245	278	237	-33 (-12%)	+8 (+3%)	234
Alctime*						
High (Melb)	209	258	259	-49 (-19%)	-50 (-19%)	240
High (Rural)	122	118	125	+4 (+3%)	-3 (-2%)	123
High (Vic)	331	376	384	-45 (-12%)	-53 (-14%)	363
Low (Melb)	345	325	338	+20 (+6%)	+7 (+2%)	329
Low (Rural)	182	214	186	-32 (-15%)	-4 (-2%)	188
Low (Vic)	527	539	524	-12 (-2%)	+3 (+1%)	516
Accident Type						
Intersection						
Adjacent direction	96	133	120	-37 (-28%)	-24 (-20%)	115
Opposing direction	58	64	64	-6 (-9%)	-6 (-9%)	60
Mid-block/other						
Head on	80	78	86	+2 (+3%)	-6 (-7%)	80
Same direction	77	70	87	+7 (+10%)	-10 (-11%)	86
Manoeuvre/o'taking	47	63	62	-16 (-25%)	-15 (-24%)	54
On path	30	24	18	+6 (+25%)	+12 (+67%)	25
Single vehicle	276	239	246	+37 (+15%)	+30 (+12%)	247
Other (incl peds)	215	250	228	-35 (-14%)	-13 (-6%)	219

Note: Excludes rejected claims and claims for interstate crashes.

* Due to changes in claim process procedures, locality data are missing for a significant number of claims lodged after October 2013.

Claims involving acute hospitalisation over 14 days: 12 months to December 2014 (claim acceptance date) - Continued

Category	2014	2013	2012	2014 v 2013		2014 v 2012		5 Year Av
Police Service Area* (based on Local Government Area (see p.13))								
BALLARAT	19	17	8	+2	(+12%)	+11	(+138%)	15
BANYULE	8	11	10	-3	(-27%)	-2	(-20%)	10
BASS COAST	18	16	13	+2	(+13%)	+5	(+38%)	17
BAW BAW	7	7	13	0	(0%)	-6	(-46%)	10
BENALLA	21	18	18	+3	(+17%)	+3	(+17%)	20
BENDIGO	9	20	14	-11	(-55%)	-5	(-36%)	17
BOROONDARA	26	18	24	+8	(+44%)	+2	(+8%)	23
BRIMBANK	29	16	29	+13	(+81%)	0	(0%)	23
CAMPASPE	6	8	6	-2	(-25%)	0	(0%)	6
CARDINIA	12	12	13	0	(0%)	-1	(-8%)	15
CASEY	27	32	22	-5	(-16%)	+5	(+23%)	28
CENTRAL GOLDFIELDS	4	8	5	-4	(-50%)	-1	(-20%)	6
DAREBIN	19	16	21	+3	(+19%)	-2	(-10%)	18
EAST GIPPSLAND	11	6	17	+5	(+83%)	-6	(-35%)	12
FRANKSTON	14	14	10	0	(0%)	+4	(+40%)	16
GEELONG	31	34	33	-3	(-9%)	-2	(-6%)	29
GLEN EIRA	23	35	23	-12	(-34%)	0	(0%)	30
GREATER DANDENONG	27	30	23	-3	(-10%)	+4	(+17%)	28
HOBSONS BAY	8	11	13	-3	(-27%)	-5	(-38%)	10
HORSHAM	7	5	9	+2	(+40%)	-2	(-22%)	8
HUME	17	27	32	-10	(-37%)	-15	(-47%)	24
KINGSTON	22	24	17	-2	(-8%)	+5	(+29%)	20
KNOX	11	17	26	-6	(-35%)	-15	(-58%)	15
LA TROBE	10	10	14	0	(0%)	-4	(-29%)	14
MACEDON RANGES	24	22	14	+2	(+9%)	+10	(+71%)	19
MANNINGHAM	10	16	21	-6	(-38%)	-11	(-52%)	14
MARIBYRNONG	5	10	17	-5	(-50%)	-12	(-71%)	12
MAROONDAH	4	6	7	-2	(-33%)	-3	(-43%)	8
MELBOURNE	35	28	31	+7	(+25%)	+4	(+13%)	31
MELTON	11	10	20	+1	(+10%)	-9	(-45%)	13
MILDURA	6	9	10	-3	(-33%)	-4	(-40%)	8
MITCHELL	16	23	26	-7	(-30%)	-10	(-38%)	19
MONASH	19	22	22	-3	(-14%)	-3	(-14%)	21
MOONEE VALLEY	25	18	21	+7	(+39%)	+4	(+19%)	18
MOORABOOL	19	17	10	+2	(+12%)	+9	(+90%)	14
MORELAND	23	32	25	-9	(-28%)	-2	(-8%)	25
MORNINGTON PENINSULA	28	25	38	+3	(+12%)	-10	(-26%)	29
NILLUMBIK	4	6	8	-2	(-33%)	-4	(-50%)	6
NORTHERN GRAMPPIANS	12	14	6	-2	(-14%)	+6	(+100%)	8
PORT PHILLIP	21	12	12	+9	(+75%)	+9	(+75%)	13
SHEPPARTON	9	13	14	-4	(-31%)	-5	(-36%)	11
SOUTHERN GRAMPPIANS	10	9	9	+1	(+11%)	+1	(+11%)	9
STONNINGTON	15	12	14	+3	(+25%)	+1	(+7%)	16
SURF COAST	10	14	8	-4	(-29%)	+2	(+25%)	11
SWAN HILL	11	5	9	+6	(+120%)	+2	(+22%)	8
WANGARATTA	14	18	18	-4	(-22%)	-4	(-22%)	17
WARRNAMBOOL	8	21	13	-13	(-62%)	-5	(-38%)	13
WELLINGTON	12	7	10	+5	(+71%)	+2	(+20%)	10
WHITEHORSE	19	20	21	-1	(-5%)	-2	(-10%)	19
WHITTLESEA	20	27	28	-7	(-26%)	-8	(-29%)	22
WODONGA	10	11	14	-1	(-9%)	-4	(-29%)	11
WYNDHAM	27	23	21	+4	(+17%)	+6	(+29%)	21
YARRA	14	17	10	-3	(-18%)	+4	(+40%)	13
YARRA RANGES	31	36	18	-5	(-14%)	+13	(+72%)	31

Note: excludes rejected claims and claims for interstate crashes

* Due to changes in claim process procedures, locality data are missing for a significant number of claims lodged after October 2013.

Claims involving an acute hospital admission: 12 months to December 2014 (claim acceptance date)

Category	2014	2013	2012	2014 v 2013	2014 v 2012	2014 v 2012	5 Year Av	
Overview								
Claims	5,959	5,681	5,511	+278	(+5%)	+448	(+8%)	5,703
Sex								
Female	2,542	2,312	2,373	+230	(+10%)	+169	(+7%)	1,938
Male	3,411	3,365	3,137	+46	(+1%)	+274	(+9%)	2,652
Roaduser								
Driver	2,660	2,558	2,633	+102	(+4%)	+27	(+1%)	2,104
Passenger	1,044	950	940	+94	(+10%)	+104	(+11%)	804
Motorcyclist	1,110	1,021	818	+89	(+9%)	+292	(+36%)	784
Pedestrian	612	654	619	-42	(-6%)	-7	(-1%)	508
Cyclist	383	391	359	-8	(-2%)	+24	(+7%)	296
Train/Tram	32	28	28	+4	(+14%)	+4	(+14%)	22
Location*								
Melbourne	4,047	3,837	3,669	+210	(+5%)	+378	(+10%)	3,099
Rural Victoria	1,715	1,778	1,806	-63	(-4%)	-91	(-5%)	1,430
Agegroup								
0-4	49	51	48	-2	(-4%)	+1	(+2%)	40
5-15	193	166	180	+27	(+16%)	+13	(+7%)	148
16-17	104	93	110	+11	(+12%)	-6	(-5%)	86
18-20	494	497	502	-3	(-1%)	-8	(-2%)	410
21-25	758	703	687	+55	(+8%)	+71	(+10%)	577
26-29	472	427	422	+45	(+11%)	+50	(+12%)	348
30-39	914	838	867	+76	(+9%)	+47	(+5%)	707
40-49	907	854	812	+53	(+6%)	+95	(+12%)	692
50-59	756	695	692	+61	(+9%)	+64	(+9%)	572
60-69	534	527	476	+7	(+1%)	+58	(+12%)	413
70+	778	830	715	-52	(-6%)	+63	(+9%)	600
Alctime*								
High (Melb)	1,683	1,671	1,649	+12	(+1%)	+34	(+2%)	1,367
High (Rural)	689	708	758	-19	(-3%)	-69	(-9%)	591
High (Vic)	2,372	2,379	2,407	-7	(-0%)	-35	(-1%)	1,958
Low (Melb)	2,364	2,166	2,020	+198	(+9%)	+344	(+17%)	1,732
Low (Rural)	1,026	1,070	1,048	-44	(-4%)	-22	(-2%)	839
Low (Vic)	3,390	3,236	3,068	+154	(+5%)	+322	(+10%)	2,571
Accident Type								
Intersection								
Adjacent direction	764	856	790	-92	(-11%)	-26	(-3%)	663
Opposing direction	496	507	495	-11	(-2%)	+1	(+0%)	393
Mid-block/other								
Head on	320	299	309	+21	(+7%)	+11	(+4%)	257
Same direction	901	795	854	+106	(+13%)	+47	(+6%)	700
Manoeuvre/o'taking	314	325	294	-11	(-3%)	+20	(+7%)	252
On path	276	258	218	+18	(+7%)	+58	(+27%)	189
Single vehicle	1,722	1,529	1,487	+193	(+13%)	+235	(+16%)	1,276
Other (incl peds)	1,166	1,112	1,064	+54	(+5%)	+102	(+10%)	861

Note: excludes rejected claims and claims for interstate crashes

* Due to changes in claim process procedures, locality data are missing for a significant number of claims lodged after October 2013.

Claims involving an acute hospital admission: 12 months to December 2014 (claim acceptance date) –
Continued

Category	2014	2013	2012	2014 v 2013		2014 v 2012		5 Year Av
Police Service Area* (based on Local Government Area (see p.13))								
BALLARAT	83	97	96	-14	(-14%)	-13	(-14%)	76
BANYULE	71	55	63	+16	(+29%)	+8	(+13%)	49
BASS COAST	84	86	68	-2	(-2%)	+16	(+24%)	66
BAW BAW	70	53	62	+17	(+32%)	+8	(+13%)	50
BENALLA	101	123	102	-22	(-18%)	-1	(-1%)	91
BENDIGO	79	85	125	-6	(-7%)	-46	(-37%)	78
BOROONDARA	136	147	110	-11	(-7%)	+26	(+24%)	106
BRIMBANK	148	138	174	+10	(+7%)	-26	(-15%)	125
CAMPASPE	37	31	45	+6	(+19%)	-8	(-18%)	29
CARDINIA	119	94	79	+25	(+27%)	+40	(+51%)	79
CASEY	251	247	216	+4	(+2%)	+35	(+16%)	191
CENTRAL GOLDFIELDS	34	25	26	+9	(+36%)	+8	(+31%)	22
DAREBIN	99	94	96	+5	(+5%)	+3	(+3%)	77
EAST GIPPSLAND	57	59	80	-2	(-3%)	-23	(-29%)	53
FRANKSTON	117	110	126	+7	(+6%)	-9	(-7%)	101
GEELONG	217	214	218	+3	(+1%)	-1	(-0%)	178
GLEN EIRA	184	188	156	-4	(-2%)	+28	(+18%)	139
GREATER DANDENONG	266	241	184	+25	(+10%)	+82	(+45%)	181
HOBSONS BAY	69	61	68	+8	(+13%)	+1	(+1%)	51
HORSHAM	28	29	38	-1	(-3%)	-10	(-26%)	27
HUME	183	148	145	+35	(+24%)	+38	(+26%)	123
KINGSTON	158	130	134	+28	(+22%)	+24	(+18%)	109
KNOX	116	93	103	+23	(+25%)	+13	(+13%)	87
LA TROBE	52	74	56	-22	(-30%)	-4	(-7%)	53
MACEDON RANGES	90	107	73	-17	(-16%)	+17	(+23%)	69
MANNINGHAM	48	74	81	-26	(-35%)	-33	(-41%)	53
MARIBYRNONG	62	82	74	-20	(-24%)	-12	(-16%)	64
MAROONDAH	49	58	53	-9	(-16%)	-4	(-8%)	49
MELBOURNE	239	256	245	-17	(-7%)	-6	(-2%)	194
MELTON	60	80	73	-20	(-25%)	-13	(-18%)	59
MILDURA	30	45	37	-15	(-33%)	-7	(-19%)	30
MITCHELL	98	93	100	+5	(+5%)	-2	(-2%)	73
MONASH	208	197	162	+11	(+6%)	+46	(+28%)	146
MOONEE VALLEY	130	111	123	+19	(+17%)	+7	(+6%)	92
MOORABOOL	98	122	93	-24	(-20%)	+5	(+5%)	81
MORELAND	151	150	126	+1	(+1%)	+25	(+20%)	117
MORNINGTON PENINSULA	159	122	156	+37	(+30%)	+3	(+2%)	125
NILLUMBIK	28	31	42	-3	(-10%)	-14	(-33%)	29
NORTHERN GRAMPIANS	48	38	32	+10	(+26%)	+16	(+50%)	31
PORT PHILLIP	153	115	110	+38	(+33%)	+43	(+39%)	101
SHEPPARTON	65	60	72	+5	(+8%)	-7	(-10%)	51
SOUTHERN GRAMPIANS	46	51	46	-5	(-10%)	0	(0%)	38
STONNINGTON	161	129	107	+32	(+25%)	+54	(+50%)	106
SURF COAST	65	65	51	0	(0%)	+14	(+27%)	52
SWAN HILL	48	28	40	+20	(+71%)	+8	(+20%)	30
WANGARATTA	93	102	102	-9	(-9%)	-9	(-9%)	78
WARRNAMBOOL	60	76	83	-16	(-21%)	-23	(-28%)	63
WELLINGTON	84	58	71	+26	(+45%)	+13	(+18%)	60
WHITEHORSE	98	117	117	-19	(-16%)	-19	(-16%)	88
WHITTLESEA	137	157	156	-20	(-13%)	-19	(-12%)	111
WODONGA	48	57	90	-9	(-16%)	-42	(-47%)	49
WYNDHAM	170	145	133	+25	(+17%)	+37	(+28%)	122
YARRA	115	107	93	+8	(+7%)	+22	(+24%)	85
YARRA RANGES	162	160	164	+2	(+1%)	-2	(-1%)	136

Note: excludes rejected claims and claims for interstate crashes

* Due to changes in claim process procedures, locality data are missing for a significant number of claims lodged after October 2013.

Fatalities: Victorian monthly totals since 1951

Year	Jan	Feb	Mar	Apr	May	Jun	Jul	Aug	Sep	Oct	Nov	Dec	Totals
1951							61	59	52	38	29	41	
1952	45	40	54	61	54	69	67	55	44	44	31	20	584
1953	23	28	54	58	49	42	50	37	44	27	36	32	480
1954	44	42	28	60	55	36	63	33	25	52	30	41	509
1955	44	36	45	55	48	56	64	44	44	32	40	40	548
1956	34	48	51	67	53	65	71	47	39	39	44	48	606
1957	50	41	46	58	52	54	57	53	51	46	32	49	589
1958	50	38	42	58	54	41	54	53	57	40	57	52	596
1959	50	57	61	50	75	55	42	48	52	55	63	63	671
1960	49	53	57	76	70	70	67	62	61	77	52	66	760
1961	63	57	68	74	58	68	78	82	59	62	60	65	794
1962	65	41	76	78	72	80	70	77	62	53	64	70	808
1963	67	56	65	85	66	68	77	55	55	58	61	67	780
1964	73	71	78	71	83	89	80	89	67	66	62	75	904
1965	63	64	86	88	80	87	79	69	81	77	68	87	929
1966	75	59	75	103	74	86	87	80	75	66	90	85	955
1967	61	79	91	97	81	71	59	67	70	68	60	83	887
1968	70	78	86	78	73	76	73	77	72	80	81	105	949
1969	79	68	79	87	86	77	87	83	87	83	94	101	1,011
1970	85	84	106	80	87	88	110	106	78	95	68	74	1,061
1971	83	75	77	68	76	86	85	72	78	73	74	76	923
1972	61	62	75	82	75	71	98	85	83	62	80	81	915
1973	75	75	95	85	64	66	61	85	89	88	66	86	935
1974	56	62	81	60	70	73	67	62	53	70	80	72	806
1975	67	65	87	73	97	94	57	75	69	66	71	89	910
1976	79	78	88	78	69	79	60	70	82	78	77	100	938
1977	65	71	89	79	65	79	70	91	68	74	96	107	954
1978	75	54	95	63	64	69	68	77	65	84	83	72	869
1979	63	60	86	75	45	64	66	75	69	79	72	93	847
1980	48	55	66	59	47	56	60	53	45	58	61	49	657
1981	69	60	58	61	74	65	61	63	68	71	59	57	766
1982	55	53	59	59	67	45	47	71	53	69	65	66	709
1983	42	59	53	63	62	61	65	51	59	43	54	52	664
1984	65	48	58	50	56	48	46	50	71	53	55	58	658
1985	56	47	50	65	75	50	51	50	58	61	56	64	683
1986	56	50	70	69	59	53	42	54	54	52	59	51	669
1987	62	43	57	52	63	59	62	49	62	61	55	80	705
1988	49	58	69	54	79	50	54	52	64	59	43	70	701
1989	76	65	80	59	67	73	52	65	82	50	41	66	776
1990	48	44	55	39	56	64	41	34	48	35	40	44	548
1991	45	39	70	30	34	29	44	47	41	36	35	53	503
1992	34	33	34	47	33	29	23	27	28	38	30	40	396
1993	27	40	37	39	44	33	33	27	34	39	43	40	436
1994	36	31	44	35	27	33	29	37	17	27	32	30	378
1995	38	35	26	33	34	41	27	34	34	32	38	46	418
1996	40	47	35	38	28	29	30	35	49	24	33	30	418
1997	36	25	30	30	40	22	39	26	26	29	39	35	377
1998	29	29	32	36	31	22	40	19	37	36	49	30	390
1999	32	31	35	35	34	24	35	26	28	38	29	37	384
2000	32	26	46	32	39	32	33	29	36	29	44	29	407
2001	44	30	31	32	31	41	34	37	35	51	41	37	444
2002	32	31	45	31	45	32	27	25	31	30	31	37	397
2003	21	41	36	28	31	28	20	23	23	24	24	31	330
2004	32	22	30	30	46	28	27	26	22	28	25	27	343
2005	33	27	47	21	29	23	30	25	25	33	17	36	346
2006	24	37	23	23	27	23	25	22	43	20	31	39	337
2007	23	23	32	25	26	28	28	20	23	37	26	41	332
2008	28	20	37	25	25	20	27	27	18	25	26	25	303
2009	31	18	23	32	19	30	19	21	14	28	21	34	290
2010	26	25	23	20	31	26	26	18	17	36	12	28	288
2011	18	20	34	31	30	24	25	14	12	22	30	27	287
2012	30	20	25	19	23	22	17	25	17	34	26	24	282
2013	14	24	24	19	18	13	24	20	19	15	23	30	243
2014	25	21	25	14	23	17	22	21	20	19	28	14	249
2015	25	22	23	21	21	22							
Ave	48	46	55	53	53	51	51	50	49	50	49	55	613
Max	85	84	106	103	97	94	110	106	89	95	96	107	1,061
Min	14	18	23	14	18	13	17	14	12	15	12	14	243

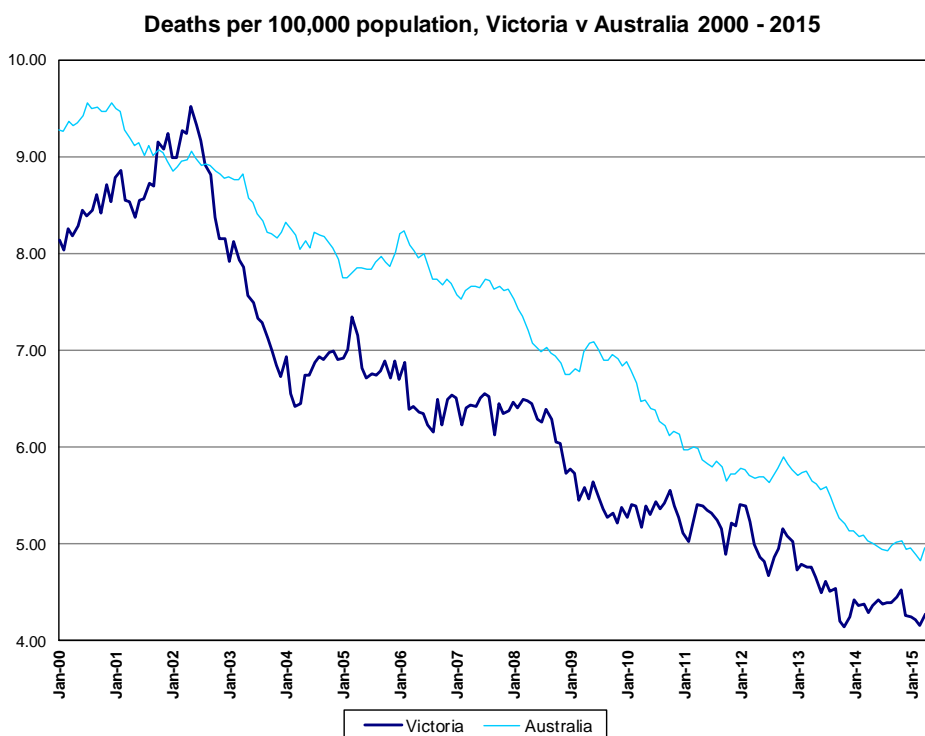
Fatalities by Week (2009 to 2015)

Week Ending	2009	2010	2011	2012	2013	2014	2015	Cumulative 2015	% Change 2015-2014	12 Month Moving Total
5-Jan	7	3	2	3	1	0	2	2	-	251
12-Jan	10	5	6	7	3	5	5	7	+40%	251
19-Jan	4	6	3	8	6	7	6	13	+8%	250
26-Jan	4	5	4	9	4	9	2	15	-29%	243
2-Feb	6	9	6	5	3	6	10	25	-7%	247
9-Feb	6	7	5	3	8	4	6	31	0%	249
16-Feb	7	4	6	7	6	8	4	35	-10%	245
23-Feb	4	8	3	6	6	2	6	41	0%	249
2-Mar	1	7	3	2	2	6	4	45	-4%	247
9-Mar	3	2	10	3	4	8	8	53	-4%	247
16-Mar	6	8	6	11	6	4	6	59	0%	249
23-Mar	6	3	9	5	10	4	2	61	-3%	247
30-Mar	8	7	9	6	2	6	3	64	-7%	244
6-Apr	5	4	6	7	4	6	3	67	-11%	241
13-Apr	5	5	9	2	6	6	6	73	-10%	241
20-Apr	11	7	7	6	4	2	7	80	-4%	246
27-Apr	9	1	6	3	5	2	5	85	0%	249
4-May	6	6	6	10	6	3	4	89	+1%	250
11-May	7	8	6	2	3	4	6	95	+3%	252
18-May	1	4	7	4	1	3	4	99	+4%	253
25-May	2	11	10	6	2	5	4	103	+3%	252
1-Jun	6	5	5	2	9	9	5	108	-1%	248
8-Jun	4	7	4	8	2	2	5	113	+2%	251
15-Jun	9	4	6	3	3	2	4	117	+4%	253
22-Jun	7	8	7	8	5	3	4	121	+4%	254
29-Jun	9	7	6	3	1	8	5	126	+2%	251
6-Jul	3	7	4	2	5	6				
13-Jul	6	2	8	5	7	7				
20-Jul	4	3	6	5	4	3				
27-Jul	5	8	6	5	5	4				
3-Aug	4	10	3	1	8	4				
10-Aug	7	3	5	5	1	5				
17-Aug	6	5	3	5	3	6				
24-Aug	3	5	2	6	6	4				
31-Aug	3	1	3	8	5	5				
7-Sep	2	5	1	5	5	4				
14-Sep	4	1	4	6	2	6				
21-Sep	4	4	1	3	3	4				
28-Sep	3	5	5	3	8	3				
5-Oct	2	9	4	7	3	4				
12-Oct	6	10	5	8	2	8				
19-Oct	8	5	3	9	3	0				
26-Oct	8	7	3	6	3	8				
2-Nov	5	8	8	6	6	2				
9-Nov	3	1	6	7	8	3				
16-Nov	9	2	12	6	2	8				
23-Nov	6	3	9	5	8	3				
30-Nov	4	5	2	9	4	13				
7-Dec	5	4	10	7	6	5				
14-Dec	8	8	3	4	10	3				
21-Dec	11	6	7	1	9	3				
28-Dec	6	8	6	8	4	3				
31-Dec	2	2	1	1	1	1				
Total	290	288	287	282	243	249				

The National Picture

State	Fatalities (12 months to June)					2015 v 2014	
	2015	2014	2013	2012			
NSW	314	337	341	386	-23	(-7%)	
VIC	254	256	255	269	-2	(-1%)	
QLD	236	229	297	278	+7	(+3%)	
SA	112	88	99	89	+24	(+27%)	
WA	179	160	179	178	+19	(+12%)	
TAS	35	39	34	19	-4	(-10%)	
NT	41	42	46	53	-1	(-2%)	
ACT	13	8	11	5	+5	(+63%)	
AUST TOTAL	1,183	1,159	1,262	1,277	+24	(+2%)	
AUST minus VIC	930	903	1,007	1,008	+27	(+3%)	

State	Fatalities per 10,000 registered vehicles (12 months to June)			Fatalities per 100,000 population (12 months to June)		
	2015	2014	2013	2015	2014	2013
NSW	0.60	0.66	0.69	4.15	4.52	4.64
VIC	0.56	0.57	0.58	4.31	4.42	4.49
QLD	0.62	0.62	0.83	4.96	4.88	6.44
SA	0.83	0.66	0.76	6.61	5.24	5.95
WA	0.80	0.75	0.88	6.88	6.29	7.24
TAS	0.78	0.88	0.78	6.79	7.59	6.63
NT	2.64	2.77	3.11	16.54	17.33	19.40
ACT	0.46	0.29	0.40	3.36	2.08	2.90
AUST TOTAL	0.66	0.66	0.74	5.00	4.97	5.55
AUST minus VIC	0.69	0.69	0.79	5.16	5.13	5.86



Victoria v Australia - 12 Month Moving Fatality Rate

Booze-Bus Random Breath Testing

12 months to March 2015 (monthly totals)

	2014									2015		
	Apr	May	Jun	Jul	Aug	Sep	Oct	Nov	Dec	Jan	Feb	Mar
Melbourne	96,725	107,794	103200	110,427	110,124	101,857	100,252	86,261	99,008	95,430	76,758	84,559
Country	9,737	12,033	7,548	9,300	7,841	7,989	8,116	10,510	7,084	5,191	7,882	5,830
Vic Total	106,462	119,827	110,748	119,727	117,965	109,846	108,368	96,771	106,092	100,621	84,640	90,389

12 months to March 2015 vs previous 12 months

	2015	2014	2013	2015 v 2014	2015 v 2013
Melbourne	1,172,395	1,060,175	1,062,075	+112220 (+11%)	+110320 (+10%)
Country	99,061	90,264	101,223	+8797 (+10%)	-2162 (-2%)
Vic Total	1,271,456	1,150,439	1,163,298	+121017 (+11%)	+108158 (+9%)

Mobile Safety Camera Data

Speed Infringements Issued from Mobile Cameras (monthly totals)

Monthly Average = 34,575

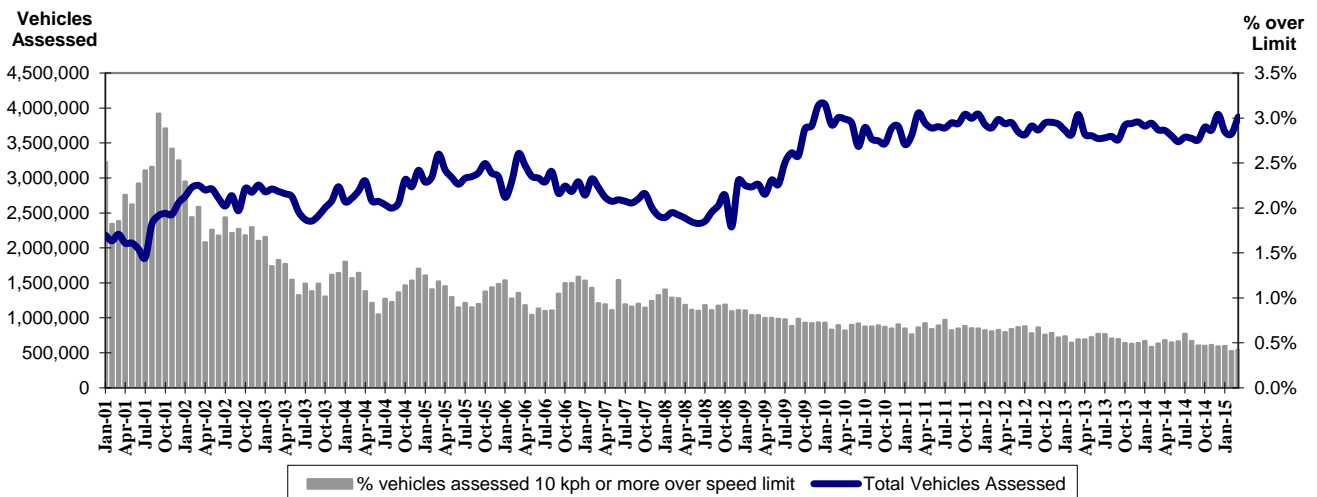
2014	2015											
	Apr	May	Jun	Jul	Aug	Sep	Oct	Nov	Dec	Jan	Feb	Mar
	29,399	44,981	34,108	42,640	34,202	32,625	35,422	32,416	28,732	37,982	31,250	31,144

Excessive Speed Infringements (ESI) Issued from Mobile Cameras (monthly totals)

Monthly Average = 308

2014	2015											
	Apr	May	Jun	Jul	Aug	Sep	Oct	Nov	Dec	Jan	Feb	Mar
	252	366	316	390	317	292	334	287	258	311	270	303

Notes: An ESI is defined as 25km/h over the speed limit except in a 110km/h zone where it is 20km/h over the limit.



Mobile Safety Cameras – Vehicles assessed and percentage of vehicles assessed 10km/h or more over speed limit per month

Explanations and References

Hi-AlcTime is those times of the day and week (*shaded* in the table below) when casualty crashes are ten times more likely to involve alcohol than casualty crashes at other (Lo-AlcTime) times.

	12am - 6am	6am - 8am	8am - 10am	10am - 2pm	2pm - 4pm	4pm - 6pm	6pm - 12pm
Monday							
Tuesday							
Wednesday							
Thursday							
Friday							
Saturday							
Sunday							

Police Service Areas align with Local Government Areas. Most Police Service Areas are equivalent to a single Local Government Area, while the remainder comprise two or three Local Government Areas.

Police Service Area	Local Government Area(s)	Police Service Area	Local Government Area(s)
BALLARAT	BALLARAT, PYRENEES	MAROONDAH	MAROONDAH
BANYULE	BANYULE	MELBOURNE	MELBOURNE
BASS COAST	BASS COAST, SOUTH GIPPSLAND	MELTON	MELTON
BAW BAW	BAWBAW	MILDURA	MILDURA
BENALLA	BENALLA, MANSFIELD, MURRINDINDI	MITCHELL	MITCHELL, STRATHBOGIE
BENDIGO	GREATER BENDIGO	MONASH	MONASH
BOROONDARA	BOROONDARA	MOONEE VALLEY	MOONEE VALLEY
BRIMBANK	BRIMBANK	MOORABOOL	GOLDEN PLAINS, HEPBURN, MOORABOOL
CAMPASPE	CAMPASPE	MORELAND	MORELAND
CARDINIA	CARDINIA	MORNINGTON PENINSULA	MORNINGTON PENINSULA
CASEY	CASEY	NILLUMBIK	NILLUMBIK
CENTRAL GOLDFIELDS	CENTRAL GOLDFIELDS, LODDON	NORTHERN GRAMPIANS	ARARAT, NORTHERN GRAMPIANS, YARRIAMIACK
GREATER DANDENONG	GREATER DANDENONG	PORT PHILLIP	PORT PHILLIP
DAREBIN	DAREBIN	SHEPPARTON	GREATER SHEPPARTON
EAST GIPPSLAND	EAST GIPPSLAND	SOUTHERN GRAMPIANS	GLENELG, SOUTHERN GRAMPIANS
FRANKSTON	FRANKSTON	STONNINGTON	STONNINGTON
GEELONG	GREATER GEELONG, QUEENSCLIFF	SURFCOAST	SURFCOAST, COLAC OTWAY
GLENEIRA	GLENEIRA, BAYSIDE	SWANHILL	BULOKE, GANNAWARRA, SWAN HILL
HOBSONS BAY	HOBSONSBAY	WANGARATTA	ALPINE, MOIRA, WANGARATTA
HORSHAM	HINDMARSH, HORSHAM, WESTWIMMERA	WARRNAMBOOL	CORANGAMITE, MOYNE, WARRNAMBOOL
HUME	HUME	WELLINGTON	WELLINGTON
KINGSTON	KINGSTON	WHITEHORSE	WHITEHORSE
KNOX	KNOX	WHITTLESEA	WHITTLESEA
LATROBE	LATROBE	WODONGA	INDIGO, TOWONG, WODONGA
MACEDON RANGES	MOUNT ALEXANDER, MACEDON RANGES	WYNDHAM	WYNDHAM
MANNINGHAM	MANNINGHAM	YARRA	YARRA
MARIBYRNONG	MARIBYRNONG	YARRA RANGES	YARRA RANGES

Useful Internet Sites

TAC Sites

- TAC Safety (Road Safety) www.tacsafety.com.au
- TAC How safe is your car www.howsafeisyourcar.com.au
- TAC Learners Log www.learnerslog.com.au
- TAC Motorcycle Safety Website www.spokes.com.au
- TAC Corporate site www.tac.vic.gov.au

Victorian Sites:

- VicRoads www.vicroads.vic.gov.au
- Victoria Police www.police.vic.gov.au
- Parliamentary Road Safety Committee www.parliament.vic.gov.au/rsc/
- ARRB Transport Research www.arrb.com.au
- RACV www.racv.com.au
- Monash University Accident Research Centre www.monash.edu.au/muarc
- Roadsafe www.roadsafe.org.au
- Cameras Save Lives www.camerassavelives.vic.gov.au

National and Interstate Sites:

- Australian Transport Safety Bureau www.atsb.gov.au
- Roads and Traffic Authority (NSW) www.rta.nsw.gov.au
- Queensland Transport - Road Safety transport.qld.gov.au/Home/Safety/Road
- Department of Transport (SA) www.transport.sa.gov.au/index.htm
- Main Roads Western Australia - Road Safety www.mrwa.wa.gov.au

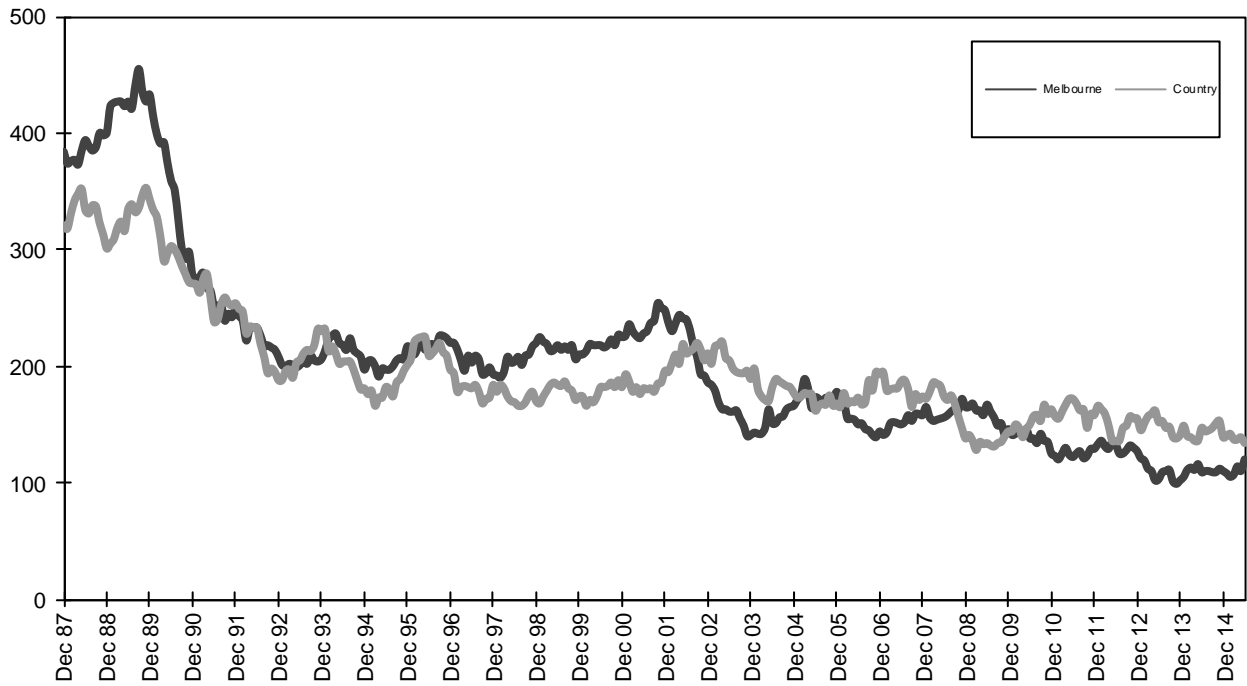
International Sites:

- National Highway Traffic Safety Admin (USA) www.nhtsa.dot.gov
- Swedish Road and Transport Institute (VTI) www.vti.se
- SWOV Institute for Road Safety Research www.swov.nl

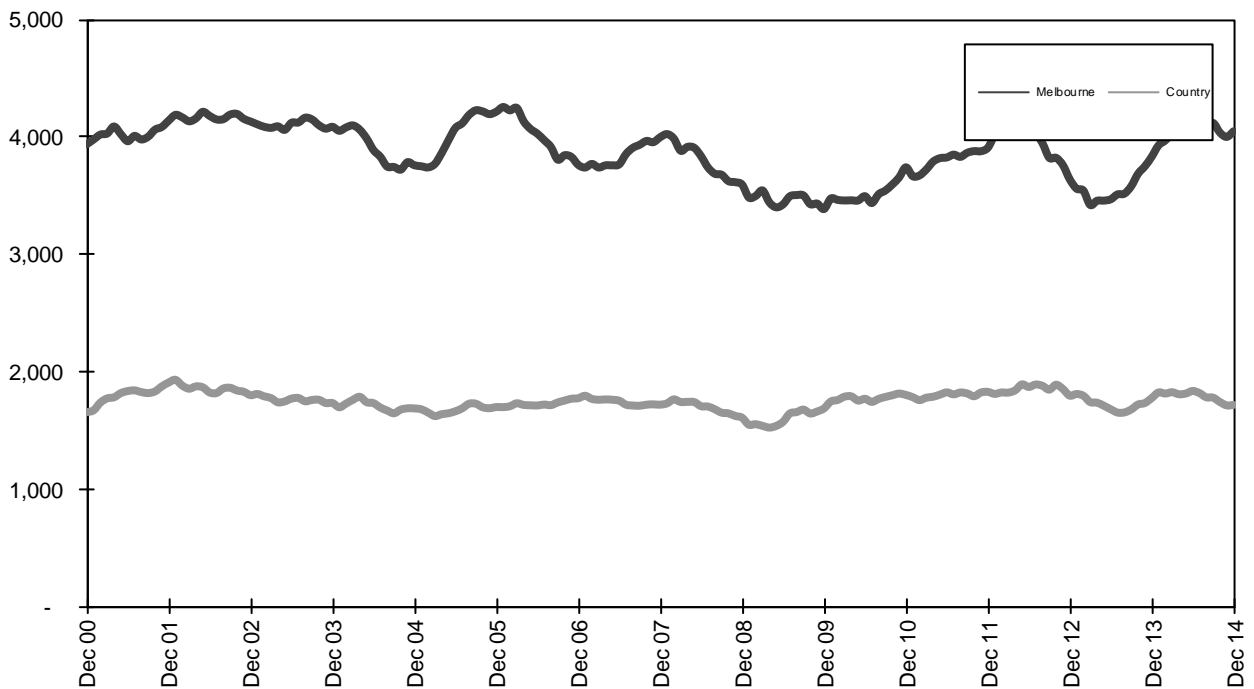
Related Sites:

- Australian Drug Foundation www.adf.org.au
- Amy Gillett Foundation www.amygillett.org.au

Figures

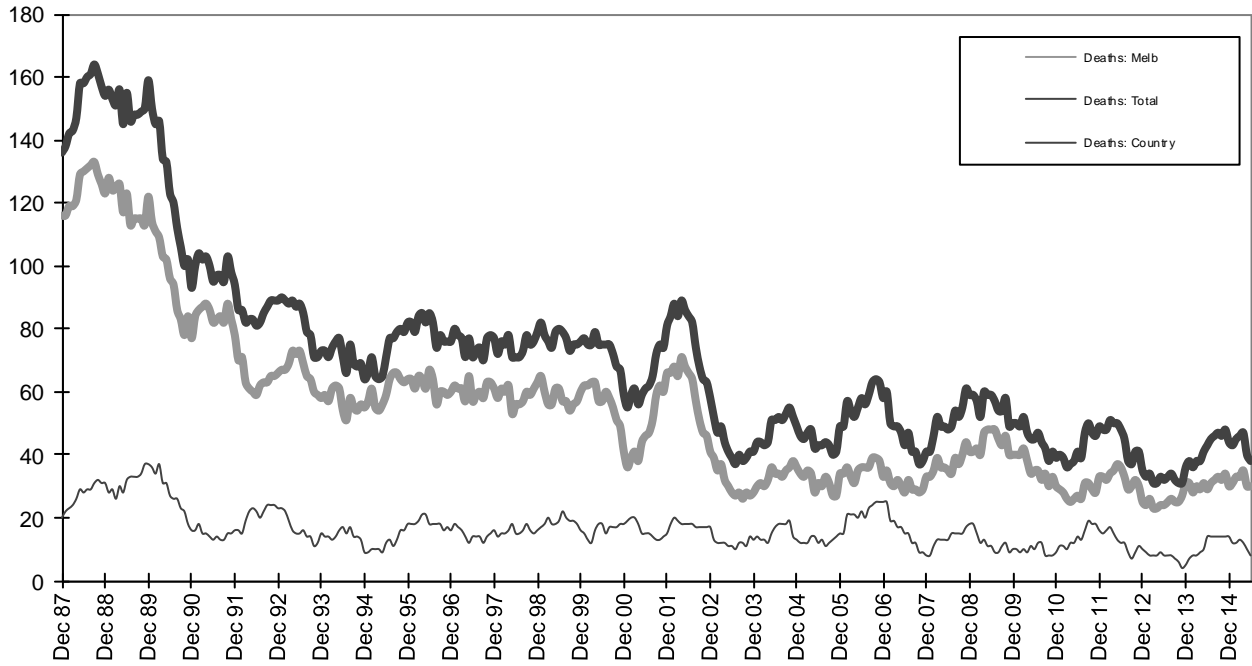


Graph 1a - Melbourne/country fatalities

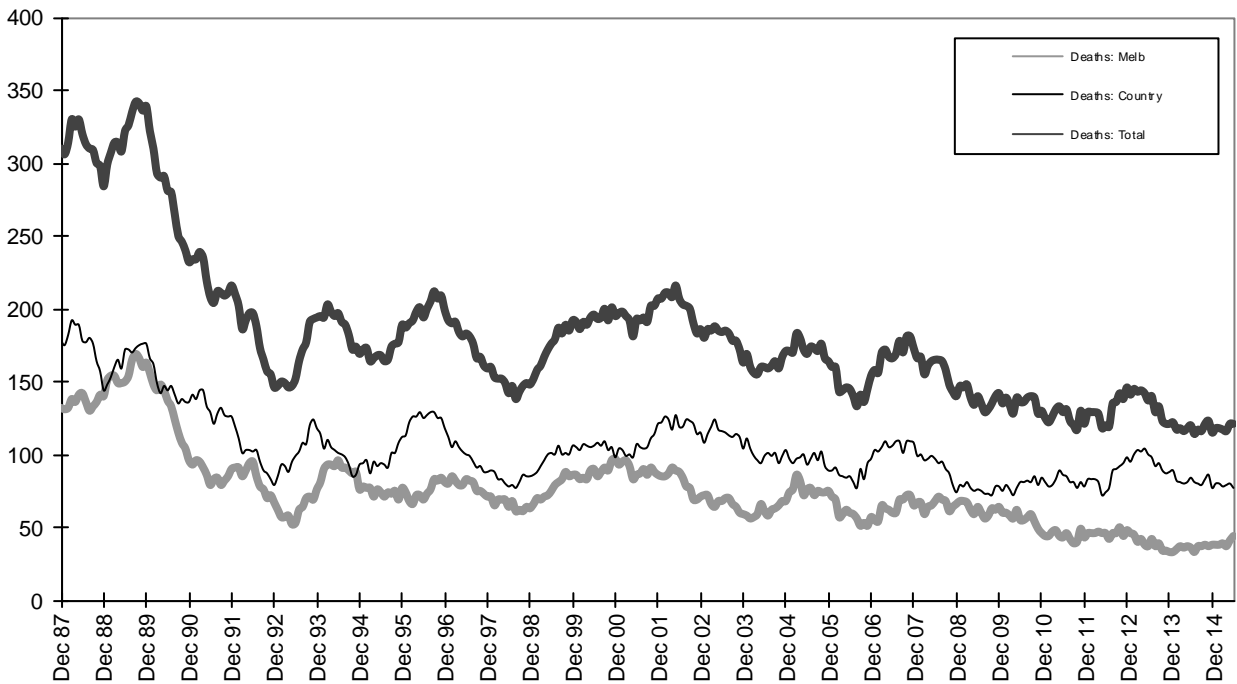


Graph 1b - Melbourne/country Claims involving an acute hospital admission

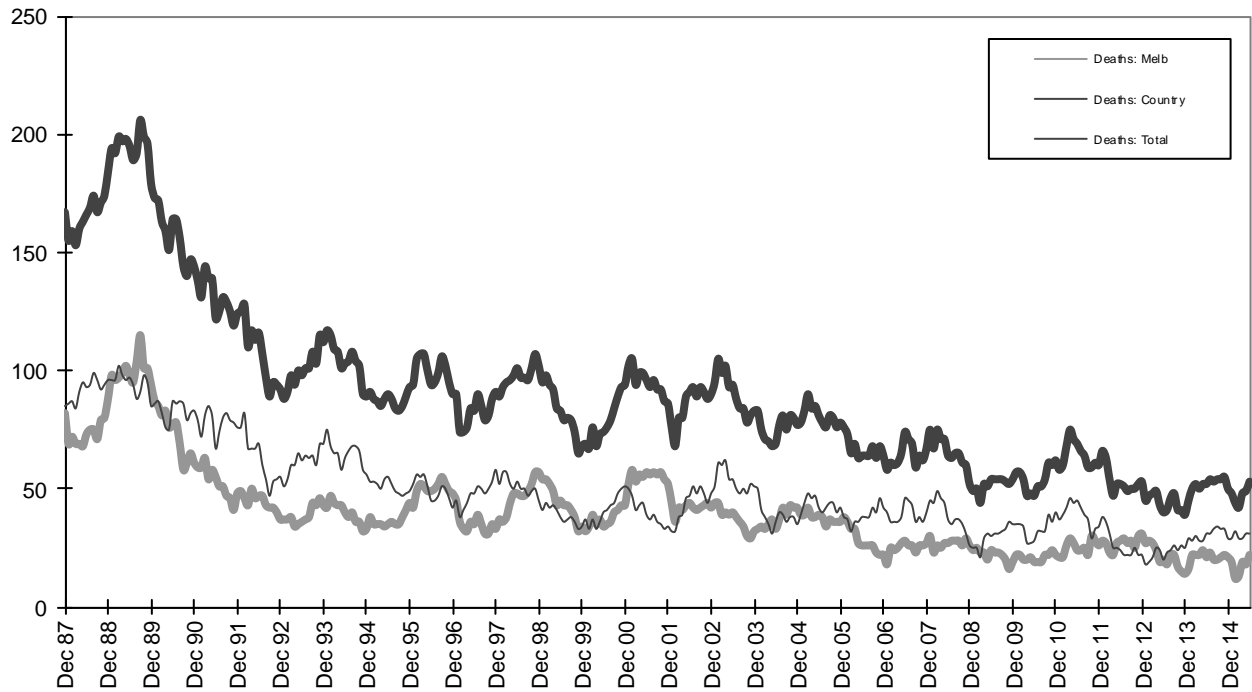
* Due to changes in claim process procedures, locality data are missing for a significant number of claims lodged after October 2013.



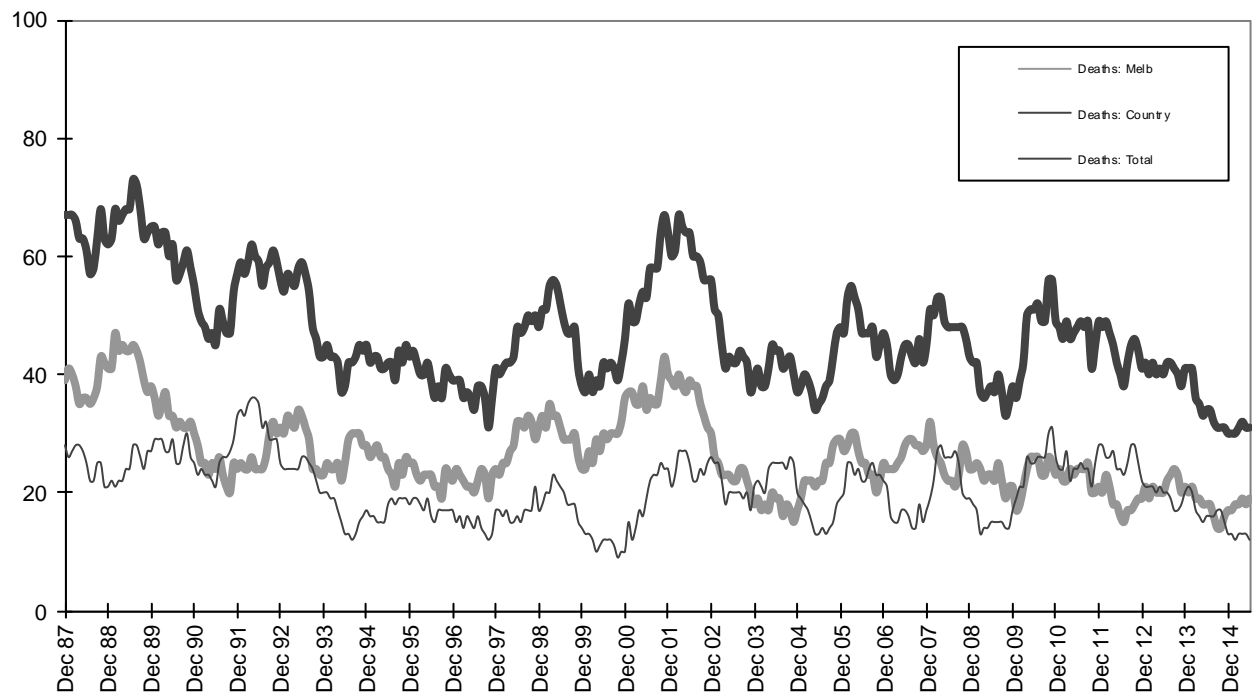
Graph 2a – Pedestrian fatalities (Melbourne/country)



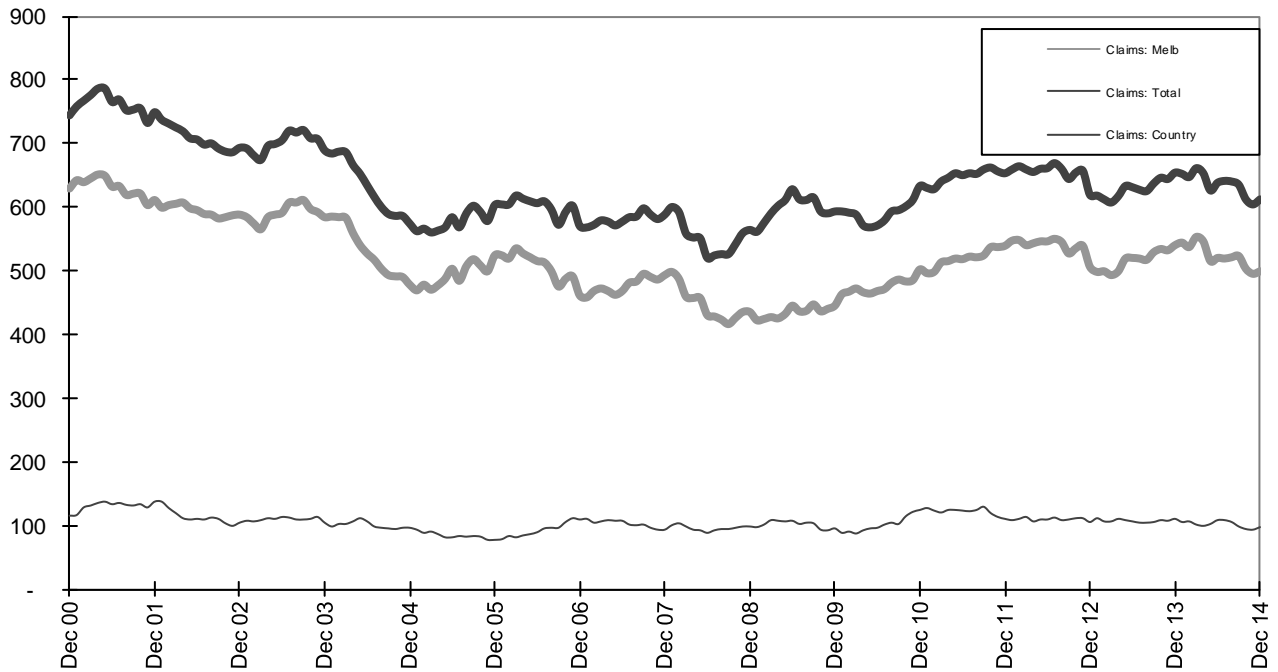
Graph 2b – Driver fatalities (Melbourne/country)



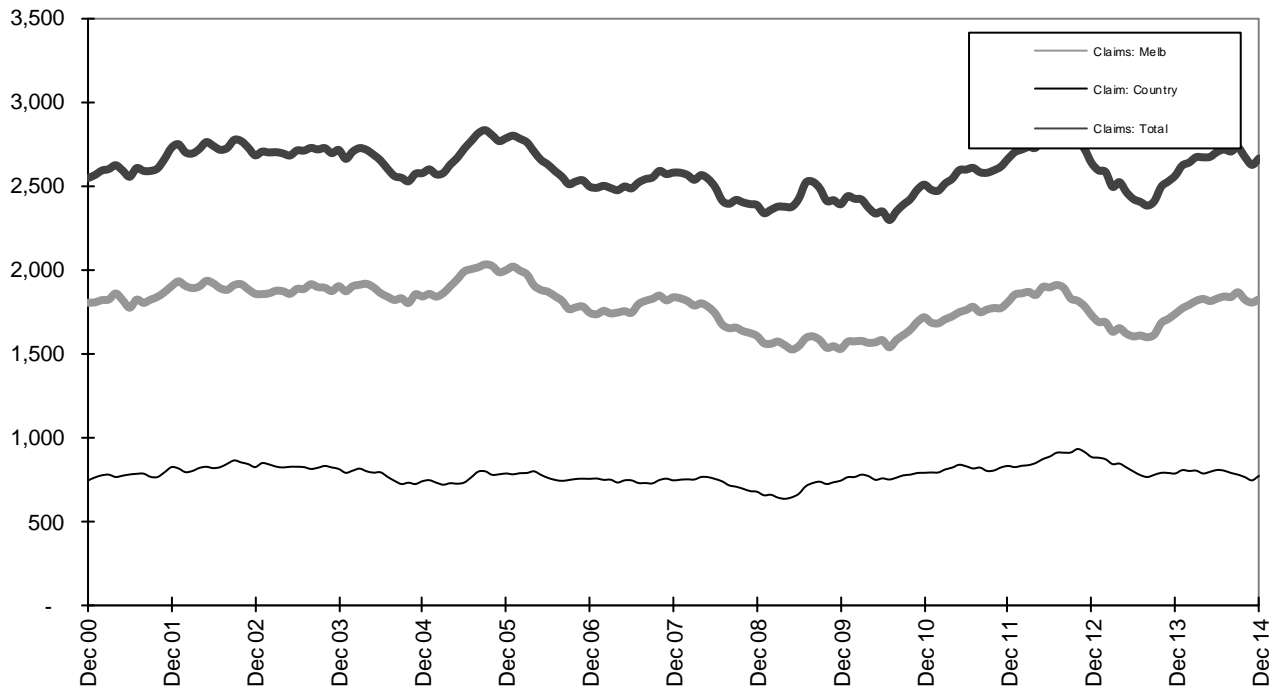
Graph 2c – Passenger fatalities (Melbourne/country)



Graph 2d – Motorcyclist fatalities (Melbourne/country)

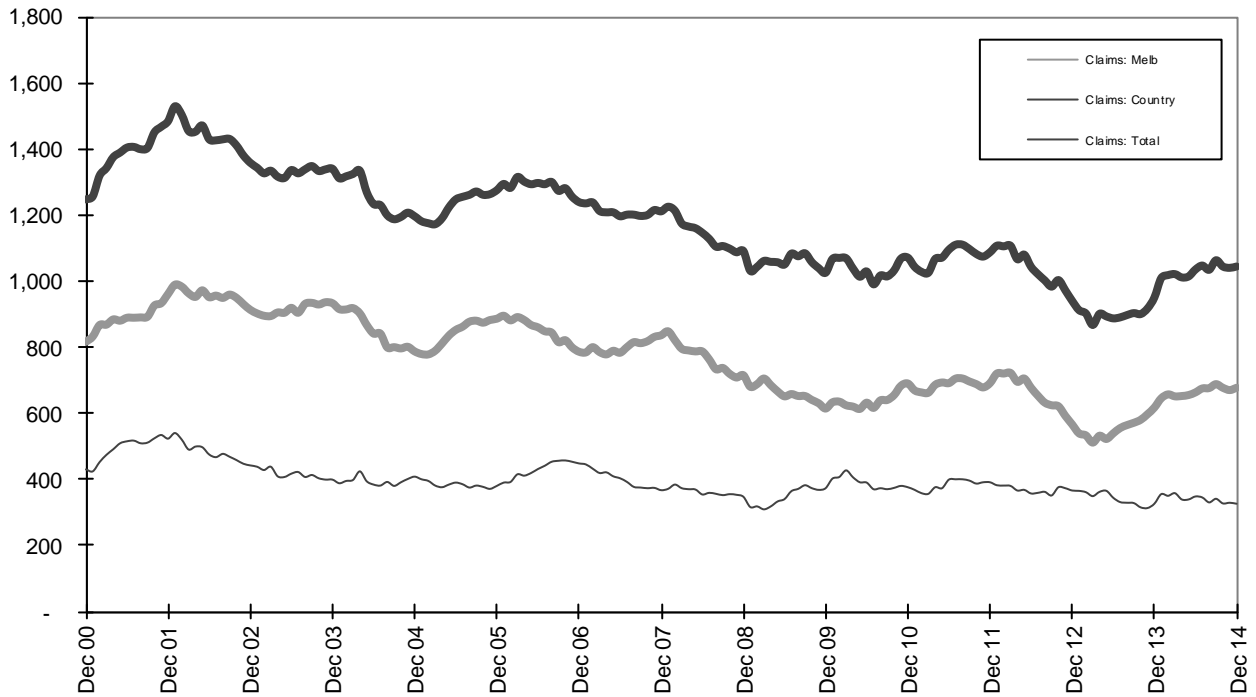


Graph 3a – Pedestrian Claims involving an acute hospital admission (Melbourne/country)

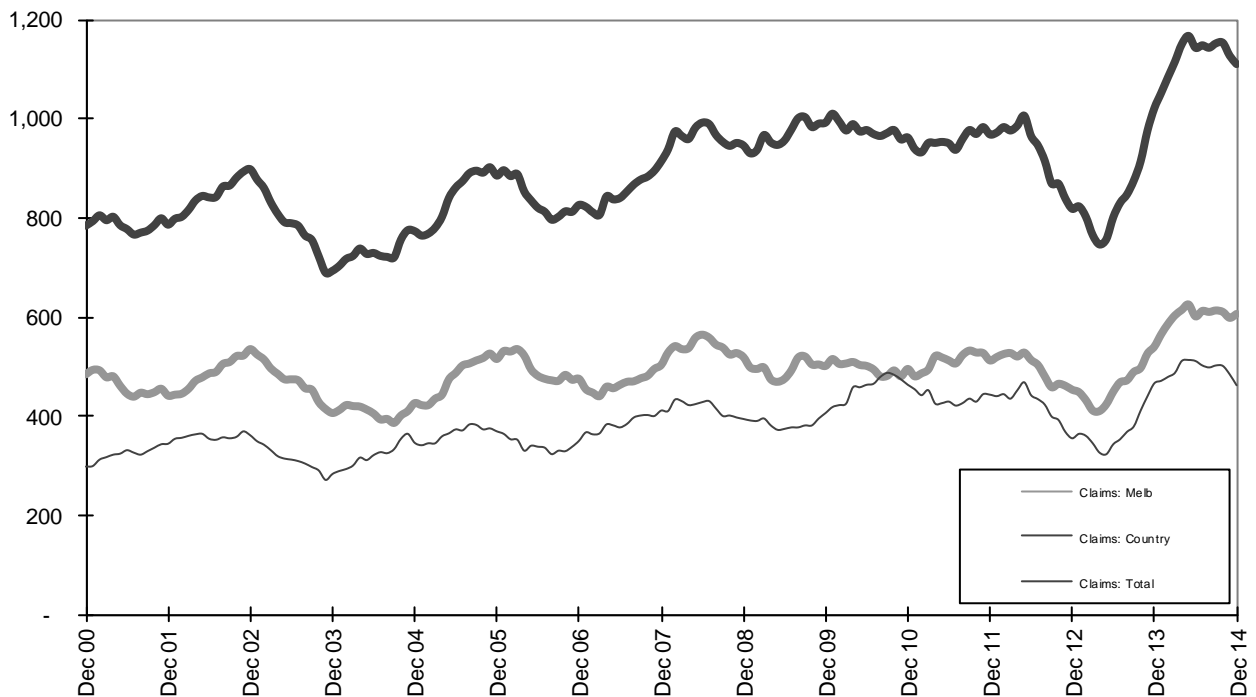


Graph 3b – Driver Claims involving an acute hospital admission (Melbourne/country)

* Due to changes in claim process procedures, locality data are missing for a significant number of claims lodged after October 2013.



Graph 3c - Passenger Claims involving an acute hospital admission (Melbourne/country)



Graph 3d - Motorcyclist Claims involving an acute hospital admission (Melbourne/country)

* Due to changes in claim process procedures, locality data are missing for a significant number of claims lodged after October 2013.