



ROAD SAFETY STATISTICAL SUMMARY OCTOBER 2010



TRANSPORT
ACCIDENT
COMMISSION

60 Brougham Street
Geelong Vic 3220
PO Box 742
Geelong Vic 3220
Ausdoc DX 216079 Geelong

Telephone 1300 654 329
STD Toll Free 1800 332 556
Fax: 03 9656 9300
www.tac.vic.gov.au
ABN 22 033 947 623



Contents

Status Report	3
Road Toll (updated snapshot)	
Tables	4-7
Fatalities (rolling 12 month)	
Claims involving hospitalisation (rolling 12 month)	
Overview	
Sex	
Road user	
Location	
Age Group	
Alctime	
Accident Type	
Police Service Area	
Victorian Road Deaths – monthly totals since 1951	8
Fatalities by Week (2005 to 2010)	9
Alcohol Related Deaths	10
The National Picture	11
Police Enforcement	12
Explanations and References	13-14
Alcohol times (“Alctime”) explained	
Police Service Areas	
Useful internet sites	
Graphs (12 month moving totals)	15-19

Note about the data in this report

- All data provided in this report is the data most recently available at time of production. Typically, fatalities data is updated to the end of report month. Similarly, breath test data and safety camera data is updated to the end of the report month. A 6-month lag applies to TAC claims data, a 2-month lag applies to alcohol related fatalities data

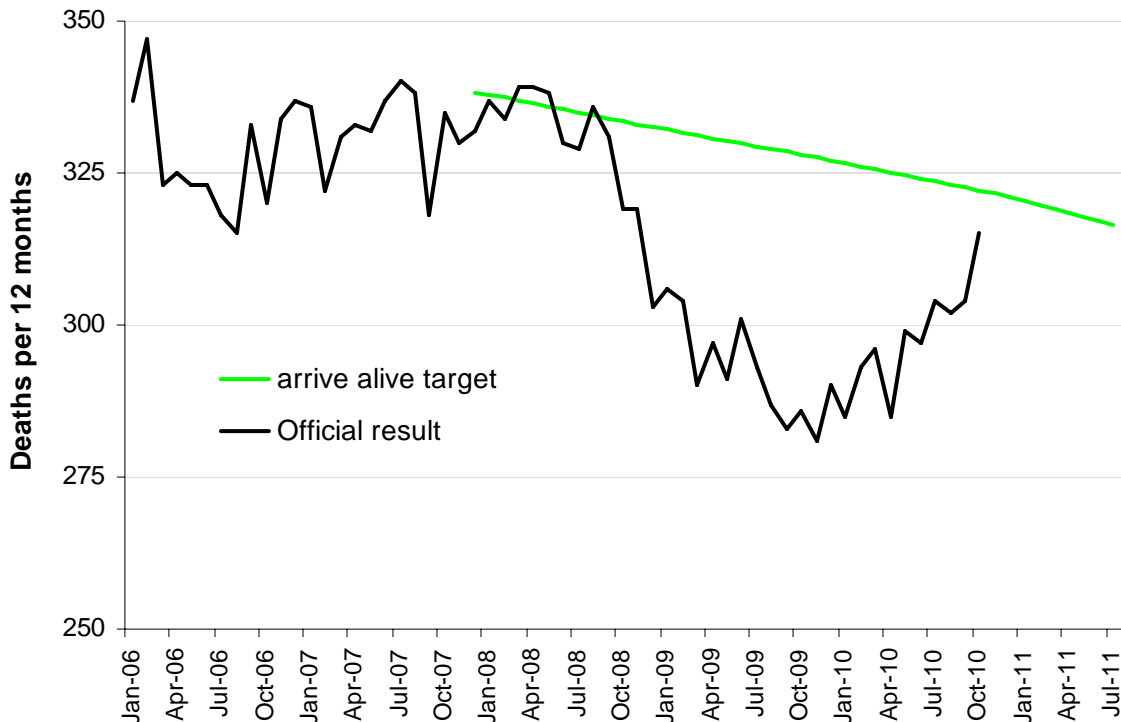
Status Report – Road Toll

Road Toll (year to date, accurate as at midnight 31 October 2010)

- The road toll in 2010 stands at 260, 11% more than at the same stage in 2009 (235).
- 16 people died in September and 39 in October on Victorian roads. This compares to 14 in September 2009 and 28 in October 2009.

Category	2010	2009	2008	2010 v 2009	2010 v 2008	5 Year Av
Casualties (Rolling 12 Month Total)						
Fatal (to October)	315	286	319	29	(10%)	315
per 10,000 veh	0.77	0.71	0.81	0.06	(8%)	0.82
per 100,000 pop	5.69	5.29	6.04	0.4	(8%)	6.06
Accidents (Rolling 12 Month Total)						
Fatal (to October)	289	261	287	28	(11%)	286
per 10,000 veh	0.70	0.65	0.73	0.05	(8%)	0.74
per 100,000 pop	5.22	4.83	5.43	0.39	(8%)	5.50

Victoria – Fatalities, rolling 12 months total



Note: Data is subject to revision as additional information about known accidents is received, and as new accident reports are received and processed.

Fatalities: 12 months to October

Category	2010	2009	2008	2010 v 2009	2010 v 2008	5 Year Av
Overview						
Fatalities	315	286	319	29 (10%)	-4 (-1%)	315
Accidents	289	261	287	28 (11%)	2 (1%)	286
Sex						
Male	242	195	225	47 (24%)	17 (8%)	226
Female	73	91	94	-18 (-20%)	-21 (-22%)	89
Roaduser						
Bicyclist	9	7	7	2 (29%)	2 (29%)	9
Driver	149	135	148	14 (10%)	1 (1%)	150
Motorcyclist	56	33	48	23 (70%)	8 (17%)	45
Passenger	61	53	61	8 (15%)	0 (0%)	60
Pedestrian	40	58	55	-18 (-31%)	-15 (-27%)	51
Location						
Melbourne	140	151	163	-11 (-7%)	-23 (-14%)	151
Rural Victoria	175	135	156	40 (30%)	19 (12%)	164
Agegroup						
0-4	6	5	5	1 (20%)	1 (20%)	4
5-15	9	9	6	0 (0%)	3 (50%)	10
16-17	7	8	11	-1 (-13%)	-4 (-36%)	10
18-20	33	42	26	-9 (-21%)	7 (27%)	34
21-25	35	26	50	9 (35%)	-15 (-30%)	37
26-29	27	17	23	10 (59%)	4 (17%)	25
30-39	46	41	47	5 (12%)	-1 (-2%)	49
40-49	40	42	42	-2 (-5%)	-2 (-5%)	43
50-59	36	35	37	1 (3%)	-1 (-3%)	35
60-69	29	21	17	8 (38%)	12 (71%)	24
70+	47	40	55	7 (18%)	-8 (-15%)	45
Altime						
High (Melb)	78	73	87	5 (7%)	-9 (-10%)	81
High (Rural)	88	65	74	23 (35%)	14 (19%)	80
High (Vic)	166	138	161	28 (20%)	5 (3%)	160
Low (Melb)	62	78	76	-16 (-21%)	-14 (-18%)	70
Low (Rural)	87	70	82	17 (24%)	5 (6%)	84
Low (Vic)	149	148	158	1 (1%)	-9 (-6%)	155
Accident Type						
Intersection						
Adjacent direction	29	15	28	14 (93%)	1 (4%)	25
Opposing direction	7	4	9	3 (75%)	-2 (-22%)	9
Mid-block/other						
Head on	39	36	42	3 (8%)	-3 (-7%)	40
Same direction	22	17	17	5 (29%)	5 (29%)	18
Manoeuvre/o'taking	21	23	10	-2 (-9%)	11 (110%)	16
On path	10	5	6	5 (100%)	4 (67%)	7
Single vehicle	139	117	140	22 (19%)	-1 (-1%)	135
Other (incl peds)	48	69	67	-21 (-30%)	-19 (-28%)	64

Fatalities: 12 months to October

Category	2010	2009	2008	2010 v 2009		2010 v 2008		5 Year Av
Police Service Area (based on Local Government Area (see p.13))								
BALLARAT	4	6	5	-2	(-33%)	-1	(-20%)	5
BANYULE	1	2	2	-1	(-50%)	-1	(-50%)	2
BASS COAST	4	9	1	-5	(-56%)	3	(300%)	5
BAW BAW	10	6	5	4	(67%)	5	(100%)	8
BAYSIDE	2	0	4	2		-2	(-50%)	2
BENALLA	10	8	11	2	(25%)	-1	(-9%)	10
BENDIGO	13	8	10	5	(63%)	3	(30%)	10
BOROONDARA	3	7	5	-4	(-57%)	-2	(-40%)	5
BRIMBANK	5	5	7	0	(0%)	-2	(-29%)	6
CAMPASPE	2	9	11	-7	(-78%)	-9	(-82%)	9
CARDINIA	7	4	6	3	(75%)	1	(17%)	5
CASEY	9	8	15	1	(13%)	-6	(-40%)	11
CENTRAL GOLDFIELDS	5	0	5	5		0	(0%)	4
CORANGAMITE	8	6	3	2	(33%)	5	(167%)	6
DANDENONG	7	8	8	-1	(-13%)	-1	(-13%)	7
DAREBIN	2	5	5	-3	(-60%)	-3	(-60%)	4
EAST GIPPSLAND	9	12	11	-3	(-25%)	-2	(-18%)	9
FRANKSTON	3	6	10	-3	(-50%)	-7	(-70%)	5
GEELONG	14	8	4	6	(75%)	10	(250%)	8
GLEN EIRA	3	5	2	-2	(-40%)	1	(50%)	4
HOBSONS BAY	1	2	6	-1	(-50%)	-5	(-83%)	4
HORSHAM	5	0	4	5		1	(25%)	3
HUME	9	9	6	0	(0%)	3	(50%)	8
KINGSTON	3	6	8	-3	(-50%)	-5	(-63%)	5
KNOX	4	6	3	-2	(-33%)	1	(33%)	5
LA TROBE	7	4	8	3	(75%)	-1	(-13%)	6
MACEDON RANGES	8	5	12	3	(60%)	-4	(-33%)	7
MANNINGHAM	5	5	2	0	(0%)	3	(150%)	3
MARIBYRNONG	1	1	3	0	(0%)	-2	(-67%)	3
MAROONDAH	3	0	2	3		1	(50%)	3
MELBOURNE	4	3	9	1	(33%)	-5	(-56%)	6
MELTON	5	8	5	-3	(-38%)	0	(0%)	5
MILDURA	6	2	8	4	(200%)	-2	(-25%)	6
MITCHELL	12	4	9	8	(200%)	3	(33%)	8
MONASH	3	8	4	-5	(-63%)	-1	(-25%)	6
MOONEE VALLEY	3	5	4	-2	(-40%)	-1	(-25%)	4
MOORABOOL	8	5	7	3	(60%)	1	(14%)	6
MORELAND	5	2	5	3	(150%)	0	(0%)	4
MORNINGTON PENINSULA	10	7	15	3	(43%)	-5	(-33%)	10
NILLUMBIK	1	2	0	-1	(-50%)	1		1
NORTHERN GRAMPIANS	3	4	3	-1	(-25%)	0	(0%)	4
PORT PHILLIP	2	2	2	0	(0%)	0	(0%)	2
SHEPPARTON	4	8	5	-4	(-50%)	-1	(-20%)	7
SOUTHERN GRAMPIANS	5	9	2	-4	(-44%)	3	(150%)	6
STONNINGTON	0	1	0	-1	(-100%)	0		1
SURF COAST	5	2	6	3	(150%)	-1	(-17%)	4
SWAN HILL	7	3	5	4	(133%)	2	(40%)	10
WANGARATTA	10	7	9	3	(43%)	1	(11%)	6
WARRNAMBOOL	7	3	1	4	(133%)	6	(600%)	5
WELLINGTON	4	4	9	0	(0%)	-5	(-56%)	7
WHITEHORSE	7	3	3	4	(133%)	4	(133%)	4
WHITTLESEA	14	9	3	5	(56%)	11	(367%)	8
WODONGA	5	3	2	2	(67%)	3	(150%)	4
WYNDHAM	6	4	7	2	(50%)	-1	(-14%)	6
YARRA	4	4	1	0	(0%)	3	(300%)	4
YARRA RANGES	8	14	11	-6	(-43%)	-3	(-27%)	11

Claims involving hospital admission: 12 months to April (claim acceptance date)

Category	2010	2009	2008	2010 v 2009	2010 v 2008	5 Year Av		
Overview								
Hospital admission claims	5,319	5,585	5,776	-266	(-5%)	-457	(-8%)	5620
Sex								
Male	3,094	3,290	3,374	-196	(-6%)	-280	(-8%)	3264
Female	2,222	2,295	2,402	-73	(-3%)	-180	(-7%)	2355
Roaduser								
Bicyclist	308	295	312	13	(4%)	-4	(-1%)	293
Driver	2,353	2,365	2,563	-12	(-1%)	-210	(-8%)	2492
Motorcyclist	981	950	959	31	(3%)	22	(2%)	917
Passenger	1,022	1,046	1,164	-24	(-2%)	-142	(-12%)	1149
Pedestrian	572	598	553	-26	(-4%)	19	(3%)	583
Tram/train	15	19	8	-4	(-21%)	7	(88%)	10
Location								
Melbourne	3,415	3,427	3,909	-12	(-0%)	-494	(-13%)	3727
Rural Victoria	1810	1530	1748	280	(18%)	62	(4%)	1716
Agegroup								
0-4	48	46	44	2	(4%)	4	(9%)	49
5-15	222	197	253	25	(13%)	-31	(-12%)	233
16-17	143	146	177	-3	(-2%)	-34	(-19%)	167
18-20	566	608	632	-42	(-7%)	-66	(-10%)	612
21-25	675	729	767	-54	(-7%)	-92	(-12%)	745
26-29	405	407	460	-2	(-0%)	-55	(-12%)	439
30-39	909	943	969	-34	(-4%)	-60	(-6%)	967
40-49	768	817	834	-49	(-6%)	-66	(-8%)	812
50-59	623	635	650	-12	(-2%)	-27	(-4%)	613
60-69	370	442	447	-72	(-16%)	-77	(-17%)	404
70+	590	615	543	-25	(-4%)	47	(9%)	579
Altime								
High (Melb)	1586	1582	1752	4	(0%)	-166	(-9%)	1725
High (Rural)	842	648	763	194	(30%)	79	(10%)	742
High (Vic)	2485	2574	2614	-89	(-3%)	-129	(-5%)	2571
Low (Melb)	1829	1845	2157	-16	(-1%)	-328	(-15%)	2002
Low (Rural)	968	882	985	86	(10%)	-17	(-2%)	973
Low (Vic)	2834	3011	3162	-177	(-6%)	-328	(-10%)	3048
Accident Type								
Intersection								
Adjacent direction	812	839	858	-27	(-3%)	-46	(-5%)	858
Opposing direction	433	430	492	3	(1%)	-59	(-12%)	445
Mid-block/other								
Head on	283	339	328	-56	(-17%)	-45	(-14%)	314
Same direction	771	753	820	18	(2%)	-49	(-6%)	762
Manoeuvre/o'taking	312	316	324	-4	(-1%)	-12	(-4%)	296
On path	221	216	198	5	(2%)	23	(12%)	201
Single vehicle	1645	1594	1731	51	(3%)	-86	(-5%)	1656
Other (incl peds)	841	939	708	-98	(-10%)	133	(19%)	767

Note: excludes rejected claims and claims for interstate crashes

Claims involving hospital admission: 12 months to April (claim acceptance date)

Category	2010	2009	2008	2010 v 2009		2010 v 2008		5 Year Av
Police Service Area (based on Local Government Area (see p.13))								
BALLARAT	70	79	66	-9	(-11%)	4	(6%)	67
BANYULE	63	63	61	0	(0%)	2	(3%)	66
BASS COAST	76	61	109	15	(25%)	-33	(-30%)	85
BAW BAW	43	38	45	5	(13%)	-2	(-4%)	45
BAYSIDE	64	63	61	1	(2%)	3	(5%)	67
BENALLA	118	74	91	44	(59%)	27	(30%)	86
BENDIGO	78	94	81	-16	(-17%)	-3	(-4%)	84
BOROONDARA	139	120	133	19	(16%)	6	(5%)	141
BRIMBANK	119	163	186	-44	(-27%)	-67	(-36%)	155
CAMPASPE	89	54	84	35	(65%)	5	(6%)	85
CARDINIA	80	82	94	-2	(-2%)	-14	(-15%)	81
CASEY	241	179	241	62	(35%)	0	(0%)	222
CENTRAL GOLDFIELDS	29	23	19	6	(26%)	10	(53%)	22
CORANGAMITE	77	62	59	15	(24%)	18	(31%)	67
DANDENONG	162	142	198	20	(14%)	-36	(-18%)	176
DAREBIN	108	91	115	17	(19%)	-7	(-6%)	109
EAST GIPPSLAND	54	47	52	7	(15%)	2	(4%)	55
FRANKSTON	132	135	124	-3	(-2%)	8	(6%)	133
GEELONG	224	209	245	15	(7%)	-21	(-9%)	232
GLEN EIRA	98	90	107	8	(9%)	-9	(-8%)	104
HOBSONS BAY	53	64	75	-11	(-17%)	-22	(-29%)	67
HORSHAM	30	12	30	18	(150%)	0	(0%)	35
HUME	149	142	183	7	(5%)	-34	(-19%)	161
KINGSTON	144	124	133	20	(16%)	11	(8%)	138
KNOX	106	135	138	-29	(-21%)	-32	(-23%)	130
LA TROBE	52	51	60	1	(2%)	-8	(-13%)	56
MACEDON RANGES	93	62	71	31	(50%)	22	(31%)	76
MANNINGHAM	63	62	84	1	(2%)	-21	(-25%)	72
MARIBYRNONG	74	75	68	-1	(-1%)	6	(9%)	75
MAROONDAH	69	69	69	0	(0%)	0	(0%)	74
MELBOURNE	194	171	168	23	(13%)	26	(15%)	190
MELTON	49	41	57	8	(20%)	-8	(-14%)	47
MILDURA	21	32	29	-11	(-34%)	-8	(-28%)	32
MITCHELL	102	100	125	2	(2%)	-23	(-18%)	110
MONASH	150	152	180	-2	(-1%)	-30	(-17%)	164
MOONEE VALLEY	85	109	114	-24	(-22%)	-29	(-25%)	111
MOORABOOL	113	104	85	9	(9%)	28	(33%)	89
MORELAND	118	123	154	-5	(-4%)	-36	(-23%)	137
MORNINGTON PENINSULA	137	173	172	-36	(-21%)	-35	(-20%)	174
NILLUMBIK	28	35	29	-7	(-20%)	-1	(-3%)	32
NORTHERN GRAMPPIANS	28	34	46	-6	(-18%)	-18	(-39%)	38
PORT PHILLIP	101	118	148	-17	(-14%)	-47	(-32%)	136
SHEPPARTON	68	77	71	-9	(-12%)	-3	(-4%)	84
SOUTHERN GRAMPPIANS	39	28	48	11	(39%)	-9	(-19%)	38
STONNINGTON	101	101	118	0	(0%)	-17	(-14%)	116
SURF COAST	44	58	48	-14	(-24%)	-4	(-8%)	49
SWAN HILL	48	35	45	13	(37%)	3	(7%)	44
WANGARATTA	81	50	65	31	(62%)	16	(25%)	65
WARRNAMBOOL	56	27	37	29	(107%)	19	(51%)	43
WELLINGTON	87	58	50	29	(50%)	37	(74%)	64
WHITEHORSE	107	116	138	-9	(-8%)	-31	(-22%)	134
WHITTLESEA	111	110	122	1	(1%)	-11	(-9%)	111
WODONGA	59	49	83	10	(20%)	-24	(-29%)	55
WYNDHAM	102	110	123	-8	(-7%)	-21	(-17%)	116
YARRA	106	88	101	18	(20%)	5	(5%)	95
YARRA RANGES	193	189	219	4	(2%)	-26	(-12%)	202

Victorian Road Deaths: monthly totals since 1951

Year	Jan	Feb	Mar	Apr	May	Jun	Jul	Aug	Sep	Oct	Nov	Dec	Totals
1951							61	59	52	38	29	41	
1952	45	40	54	61	54	69	67	55	44	44	31	20	584
1953	23	28	54	58	49	42	50	37	44	27	36	32	480
1954	44	42	28	60	55	36	63	33	25	52	30	41	509
1955	44	36	45	55	48	56	64	44	44	32	40	40	548
1956	34	48	51	67	53	65	71	47	39	39	44	48	606
1957	50	41	46	58	52	54	57	53	51	46	32	49	589
1958	50	38	42	58	54	41	54	53	57	40	57	52	596
1959	50	57	61	50	75	55	42	48	52	55	63	63	671
1960	49	53	57	76	70	70	67	62	61	77	52	66	760
1961	63	57	68	74	58	68	78	82	59	62	60	65	794
1962	65	41	76	78	72	80	70	77	62	53	64	70	808
1963	67	56	65	85	66	68	77	55	55	58	61	67	780
1964	73	71	78	71	83	89	80	89	67	66	62	75	904
1965	63	64	86	88	80	87	79	69	81	77	68	87	929
1966	75	59	75	103	74	86	87	80	75	66	90	85	955
1967	61	79	91	97	81	71	59	67	70	68	60	83	887
1968	70	78	86	78	73	76	73	77	72	80	81	105	949
1969	79	68	79	87	86	77	87	83	87	83	94	101	1,011
1970	85	84	106	80	87	88	110	106	78	95	68	74	1,061
1971	83	75	77	68	76	86	85	72	78	73	74	76	923
1972	61	62	75	82	75	71	98	85	83	62	80	81	915
1973	75	75	95	85	64	66	61	85	89	88	66	86	935
1974	56	62	81	60	70	73	67	62	53	70	80	72	806
1975	67	65	87	73	97	94	57	75	69	66	71	89	910
1976	79	78	88	78	69	79	60	70	82	78	77	100	938
1977	65	71	89	79	65	79	70	91	68	74	96	107	954
1978	75	54	95	63	64	69	68	77	65	84	83	72	869
1979	63	60	86	75	45	64	66	75	69	79	72	93	847
1980	48	55	66	59	47	56	60	53	45	58	61	49	657
1981	69	60	58	61	74	65	61	63	68	71	59	57	766
1982	55	53	59	59	67	45	47	71	53	69	65	66	709
1983	42	59	53	63	62	61	65	51	59	43	54	52	664
1984	65	48	58	50	56	48	46	50	71	53	55	58	658
1985	56	47	50	65	75	50	51	50	58	61	56	64	683
1986	56	50	70	69	59	53	42	54	54	52	59	51	669
1987	62	43	57	52	63	59	62	49	62	61	55	80	705
1988	49	58	69	54	79	50	54	52	64	59	43	70	701
1989	76	65	80	59	67	73	52	65	82	50	41	66	776
1990	48	44	55	39	56	64	41	34	48	35	40	44	548
1991	45	39	70	30	34	29	44	47	41	36	35	53	503
1992	34	33	34	47	33	29	23	27	28	38	30	40	396
1993	27	40	37	39	44	33	33	27	34	39	43	40	436
1994	36	31	44	35	27	33	29	37	17	27	32	30	378
1995	38	35	26	33	34	41	27	34	34	32	38	46	418
1996	40	47	35	38	28	29	30	35	49	24	33	30	418
1997	36	25	30	30	40	22	39	26	26	29	39	35	377
1998	29	29	32	36	31	22	40	19	37	36	49	30	390
1999	32	31	35	35	34	24	35	26	28	38	29	37	384
2000	32	26	46	32	39	32	33	29	36	29	44	29	407
2001	44	30	31	32	31	41	34	37	35	51	41	37	444
2002	32	31	45	31	45	32	27	25	31	30	31	37	397
2003	21	41	36	28	31	28	20	23	23	24	24	31	330
2004	32	22	30	30	46	28	27	26	22	28	25	27	343
2005	33	27	47	21	29	23	30	25	25	33	17	36	346
2006	24	37	23	23	27	23	25	22	43	20	31	39	337
2007	23	23	32	25	26	28	28	20	23	37	26	41	332
2008	28	20	37	25	25	20	27	27	18	25	26	25	303
2009	31	18	23	32	19	30	19	21	14	28	21	34	290
2010	26	26	26	21	33	28	26	19	16	39			260
Ave	51	48	58	56	55	54	53	52	51	51	51	57	643
Max	85	84	106	103	97	94	110	106	89	95	96	107	1,061
Min	21	18	23	21	19	20	19	19	14	20	17	20	303

Fatalities by Week (2005 to 2010)

Week Ending	2005	2006	2007	2008	2009	2010	Cumulative 2010	% Change 2010-2009	12 Month Moving Total
3-Jan	4	4	3	3	3	1	1	-67%	288
10-Jan	6	2	2	6	11	7	8	-43%	284
17-Jan	3	4	7	7	6	5	13	-35%	283
24-Jan	13	11	5	2	2	4	17	-23%	285
31-Jan	7	3	6	10	9	9	26	-16%	285
7-Feb	6	5	6	3	4	8	34	-3%	289
14-Feb	3	6	4	4	8	4	38	-12%	285
21-Feb	7	17	12	4	2	10	48	7%	293
28-Feb	11	9	1	9	4	4	52	6%	293
7-Mar	6	2	13	8	2	5	57	12%	296
14-Mar	5	6	5	8	7	7	64	10%	296
21-Mar	15	3	3	9	2	4	68	13%	298
28-Mar	14	10	9	9	8	9	77	13%	299
4-Apr	9	3	4	8	7	4	81	8%	296
11-Apr	3	4	10	4	6	6	87	7%	296
18-Apr	7	3	5	5	8	8	95	7%	296
25-Apr	5	6	4	8	11	2	97	-3%	287
2-May	7	9	6	6	4	3	100	-4%	286
9-May	6	11	4	4	7	4	104	-6%	283
16-May	12	3	7	7	3	9	113	-1%	289
23-May	5	6	5	5	1	8	121	5%	296
30-May	3	7	7	6	4	10	131	10%	302
6-Jun	2	6	15	3	6	5	136	9%	301
13-Jun	8	4	2	5	7	7	143	8%	301
20-Jun	8	7	4	5	8	9	152	9%	302
27-Jun	3	5	7	6	6	6	158	8%	302
4-Jul	8	1	3	5	8	7	165	7%	301
11-Jul	6	8	10	10	7	3	168	4%	297
18-Jul	6	7	6	2	2	3	171	5%	298
25-Jul	7	6	5	4	7	7	178	5%	298
1-Aug	7	4	5	9	3	10	188	9%	305
8-Aug	7	7	2	6	5	6	194	9%	306
15-Aug	6	5	2	6	7	5	199	8%	304
22-Aug	2	4	7	5	4	4	203	7%	304
29-Aug	7	5	9	6	1	1	204	7%	304
5-Sep	3	2	2	4	4	3	207	7%	303
12-Sep	4	8	7	5	2	4	211	8%	305
19-Sep	4	11	5	5	6	1	212	5%	300
26-Sep	13	18	8	5	2	5	217	6%	303
3-Oct	7	5	4	9	2	8	225	9%	309
10-Oct	6	9	12	5	6	13	238	12%	316
17-Oct	11	5	6	4	7	4	242	11%	313
24-Oct	4	4	11	5	7	10	252	12%	316
31-Oct	7	2	5	3	9	8	260	11%	315
7-Nov	6	9	5	4	4	4	264	10%	315
14-Nov	6	3	8	7	8	2	266	8%	309
21-Nov	2	10	4	10	5	4	270	7%	308
28-Nov	3	7	7	3	3				
5-Dec	7	16	6	4	6				
12-Dec	6	3	16	9	4				
19-Dec	5	7	5	4	11				
26-Dec	13	11	10	9	10				
31-Dec	5	4	6	1	4				
Total	346	337	332	303	290	270			

Alcohol Related Deaths

NOTE: UPDATES TO THIS DATA WERE NOT AVAILABLE AT TIME OF REPORT

BAC Fatalities (12 months to April 2010)

- 24% of killed and tested drivers and riders had a BAC at 0.05 g/100ml or over (41 of 172) compared to 25% over the previous 12 month period (43 of 169).
- In Melbourne, 21 drivers/riders killed and tested were at or over 0.05, with 38% of these having a BAC in excess of 0.15 g/100ml. Across rural Victoria, 20 drivers/riders killed and tested were at or over 0.05, with 65% of these having a BAC over 0.15.
- Of the 41 drivers and riders killed and tested at or over 0.05, 15% (6) were aged under 21, 39% (16) were aged 21-29, 27% (11) were aged 30-39 and 20% (8) were aged 40 years and over. In the previous year (43 killed) the corresponding figures were 19% (8), 28% (12), 19% (8) and 35% (15), respectively.

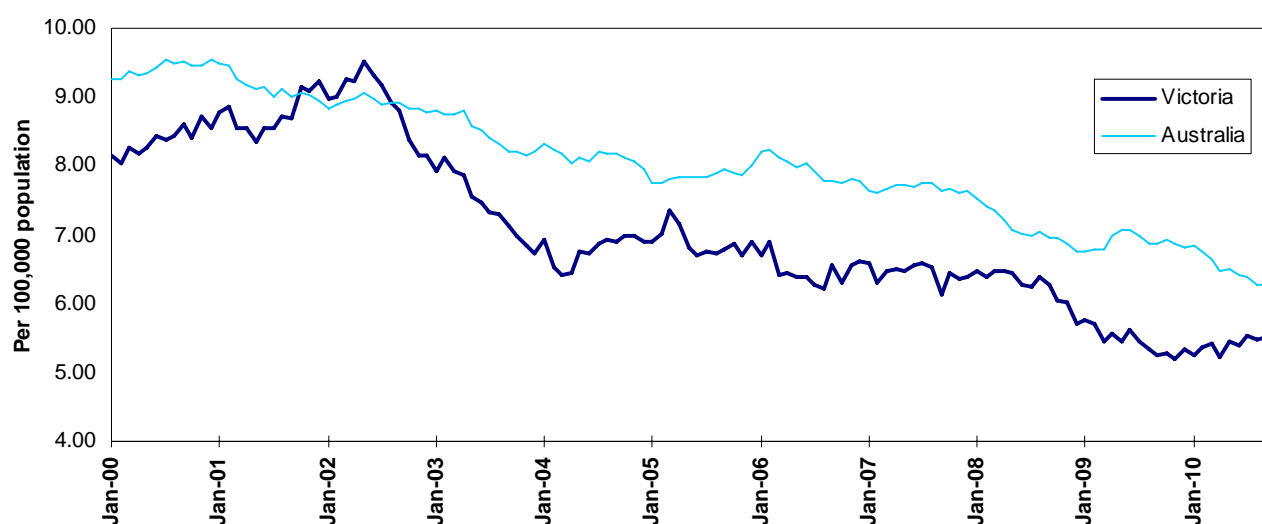
Category	2010	2009	2008	2010 v 2009	2010 v 2008	5 Year Av
Melbourne Drivers and Riders						
<0.05	55	63	63	-8	(-13%)	62
[a] at 0.05 & above	21	17	25	4	(24%)	21
% at 0.05 & above	(28%)	(21%)	(28%)			(25%)
[b] >0.15	8	10	12	-2	(-20%)	9
%>0.15	(11%)	(13%)	(14%)			(11%)
[b] as a % of [a]	(38%)	(59%)	(48%)			(43%)
BAC Unknown	5	3	1	2	(67%)	3
Country Drivers and Riders						
<0.05	76	63	90	13	(21%)	78
[a] at 0.05 & above	20	26	32	-6	(-23%)	26
% at 0.05 & above	(21%)	(29%)	(26%)			(25%)
[b] >0.15	13	17	20	-4	(-24%)	17
%>0.15	(14%)	(19%)	(16%)			(16%)
[b] as a % of [a]	(65%)	(65%)	(63%)			(64%)
BAC Unknown	7	2	1	5	(250%)	5
Victorian Total Drivers and Riders						
<0.05	131	126	153	5	(4%)	140
[a] at 0.05 & above	41	43	57	-2	(-5%)	47
% at 0.05 & above	(24%)	(25%)	(27%)			(25%)
[b] >0.15	21	27	32	-6	(-22%)	26
%>0.15	(12%)	(16%)	(15%)			(14%)
[b] as a % of [a]	(51%)	(63%)	(56%)			(54%)
BAC Unknown	12	5	2	7	(140%)	7
Victorian Total Pedestrians						
<0.05	32	35	38	-3	(-9%)	33
[a] at 0.05 & above	8	21	9	-13	(-62%)	14
% at 0.05 & above	(20%)	(38%)	(19%)			(30%)
[b] >0.15	3	10	8	-7	(-70%)	9
%>0.15	(8%)	(18%)	(17%)			(19%)
[b] as a % of [a]	(38%)	(48%)	(89%)			(62%)
BAC Unknown	6	4	2	2	(50%)	4

The National Picture

State	Killed (12 months to October)					2010 v 2009	
	2010	2009	2008	2007			
NSW	424	454	381	436	-30	(-7%)	
VIC	315	286	319	335	29	(10%)	
QLD	241	343	328	373	-102	(-30%)	
SA	115	121	107	116	-6	(-5%)	
WA	184	194	212	229	-10	(-5%)	
TAS	33	63	38	53	-30	(-48%)	
NT	44	36	80	50	8	(22%)	
ACT	18	13	15	16	5	(38%)	
AUST TOTAL	1,374	1,510	1,480	1,608	-136	(-9%)	
AUST minus VIC	1,059	1,224	1,161	1,273	-165	(-13%)	

State	Deaths per 10,000 registered vehicles (12 months to October)			Deaths per 100,000 population (12 months to October)		
	2010	2009	2008	2010	2009	2008
NSW	0.92	0.99	0.84	5.88	6.41	5.48
VIC	0.77	0.71	0.81	5.69	5.29	6.04
QLD	0.71	1.04	1.03	5.34	7.82	7.69
SA	0.93	1.00	0.91	7.01	7.47	6.69
WA	0.96	1.06	1.21	8.01	8.72	9.84
TAS	0.80	1.57	0.97	6.52	12.55	7.64
NT	3.26	2.79	6.48	19.22	16.07	36.51
ACT	0.71	0.53	0.62	5.04	3.71	4.37
AUST TOTAL	0.85	0.96	0.97	6.16	6.93	6.94
AUST minus VIC	0.88	1.05	1.02	6.32	7.47	7.24

Victoria v Australia – 12 Month Moving Fatality Rate



Booze-Bus Random Breath Testing

12 months to October 2010 (monthly totals)

	2009		2010									
	Nov	Dec	Jan	Feb	Mar	Apr	May	Jun	Jul	Aug	Sep	Oct
Melbourne	77,312	83,002	99,374	88,214	88,492	100,588	89,275	85,838	86,195	76,463	88,684	74,241
Country	13,035	26,331	23,837	17,657	13,776	20,869	13,669	13,900	13,420	9,459	14,650	11,311
Vic Total	90,347	109,333	123,211	105,871	102,268	121,457	102,944	99,738	99,615	85,922	103,334	85,552

12 months to October vs previous 12 months

	2010	2009	2008	2010 v 2009		2010 v 2008	
Melbourne	1,037,678	1,062,896	1,150,759	-25,218	(-2%)	-113,081	(-10%)
Country	191,914	220,287	238,814	-28,373	(-13%)	-46,900	(-20%)
Vic Total	1,229,592	1,283,183	1,389,573	-53,591	(-4%)	-159,981	(-12%)

Mobile Safety Camera Data

Speed Infringements Issued from Mobile Cameras (monthly totals)

Monthly Average = 50,524

2009	2010										
	Nov	Dec	Jan	Feb	Mar	Apr	May	Jun	Jul	Aug	Sep
41,750	52,024	51,439	54,548	54,283	53,468	48,585	50,841	52,675	47,719	49,546	49,408

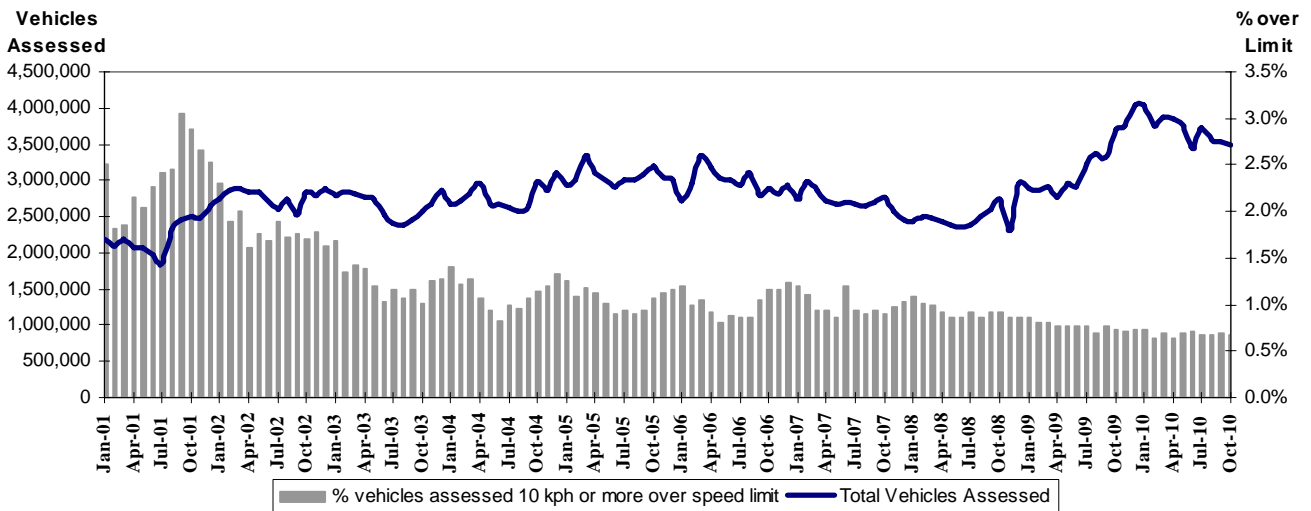
Excessive Speed Infringements Issued from Mobile Cameras (monthly totals)

Monthly Average = 364

2009	2010										
	Nov	Dec	Jan	Feb	Mar	Apr	May	Jun	Jul	Aug	Sep
282	352	382	394	360	395	372	372	422	311	354	377

Note: An ESI is defined as 25km/h over the speed limit except in a 110km/h zone where it is 20km/h over the limit.

Mobile Safety Cameras – Vehicles assessed and percentage of vehicles assessed 10km/h or more over speed limit per month



Explanations and References

Hi-Alcime is those times of the day and week (*shaded* in the table below) when casualty crashes are **ten times more likely to involve alcohol** than casualty crashes at other (**Lo-Alcime**) times.

	12am - 6am	6am - 8am	8am - 10am	10am - 2pm	2pm - 4pm	4pm - 6pm	6pm - 12pm
Monday							
Tuesday							
Wednesday							
Thursday							
Friday							
Saturday							
Sunday							

Police Service Areas align with Local Government Areas. Most Police Service Areas are equivalent to a single Local Government Area, while the remainder comprise two or three Local Government Areas.

Police Service Area	Local Government Area(s)	Police Service Area	Local Government Area(s)
BALLARAT	BALLARAT	MARIBYRNONG	MARIBYRNONG
BANYULE	BANYULE	MAROONDAH	MAROONDAH
BASS COAST	BASS COAST, SOUTH GIPPSLAND	MELBOURNE	MELBOURNE
BAW BAW	BAWBAW	MELTON	MELTON
BAYSIDE	BAYSIDE	MILDURA	MILDURA
BENALLA	BENALLA, MANSFIELD, STRATHBOGIE	MITCHELL	MITCHELL, MURRINDINDI
BENDIGO	GREATER BENDIGO, LODDON	MONASH	MONASH
BOROONDARA	BOROONDARA	MOONEE VALLEY	MOONEE VALLEY
BRIMBANK	BRIMBANK	MOORABOOL	GOLDEN PLAINS, HEPBURN, MOORABOOL
CAMPASPE	CAMPASPE	MORELAND	MORELAND
CARDINIA	CARDINIA	MORNINGTON PENINSULA	MORNINGTON PENINSULA
CASEY	CASEY	NILLUMBIK	NILLUMBIK
CENTRAL GOLDFIELDS	CENTRAL GOLDFIELDS, PYRENEES	NORTHERN GRAMPIANS	ARARAT, NORTHERN GRAMPIANS, YARRIAMIACK
CORANGAMITE	COLAC-OTWAY, CORANGAMITE	PORT PHILLIP	PORT PHILLIP
DANDENONG	GREATER DANDENONG	SHEPPARTON	GREATER SHEPPARTON
DAREBIN	DAREBIN	SOUTHERN GRAMPIANS	GLENELG, SOUTHERN GRAMPIANS
EAST GIPPSLAND	EAST GIPPSLAND	STONNINGTON	STONNINGTON
FRANKSTON	FRANKSTON	SURFCOAST	SURFCOAST
GEELONG	GREATER GEELONG, QUEENSLIFF	SWANHILL	BULOKE
GLENEIRA	GLENEIRA	WANGARATTA	ALPINE, WANGARATTA
HOBSONS BAY	HOBSONSBAY	WARRNAMBOOL	MOYNE, WARRNAMBOOL
HORSHAM	HINDMARSH, HORSHAM, WESTWIMMERA	WELLINGTON	WELLINGTON
HUME	HUME	WHITEHORSE	WHITEHORSE
KINGSTON	KINGSTON	WHITTLESEA	WHITTLESEA
KNOX	KNOX	WODONGA	INDIGO, TOWONG, WODONGA
LATROBE	LATROBE	WYNDHAM	WYNDHAM
MACEDON RANGES	MOUNT ALEXANDER, MACEDON RANGES	YARRA	YARRA
MANNINGHAM	MANNINGHAM	YARRA RANGES	YARRA RANGES

Useful Internet Sites

TAC Sites

- TAC Safety (Road Safety) www.tacsafety.com.au
- TAC How safe is your car www.howsafeisyourcar.com.au
- TAC Learners Log www.learnerslog.com.au
- TAC Motorcycle Safety Website www.spokes.com.au
- TAC Corporate site www.tac.vic.gov.au

Victorian Sites:

- arrive alive www.vicroads.vic.gov.au
- VicRoads www.vicroads.vic.gov.au
- Victorian Police www.police.vic.gov.au
- Parliamentary Road Safety Committee www.parliament.vic.gov.au/rsc/
- ARRB Transport Research www.arrb.com.au
- RACV www.racv.com.au
- Monash University Accident Research Centre www.monash.edu.au/muarc
- Roadsafe www.roadsafe.org.au

National and Interstate Sites:

- Australian Transport Safety Bureau www.atsb.gov.au
- Roads and Traffic Authority (NSW) www.rta.nsw.gov.au
- Queensland Transport - Road Safety transport.qld.gov.au/Home/Safety/Road
- Department of Transport (SA) www.transport.sa.gov.au/index.htm
- Main Roads Western Australia - Road Safety www.mrwa.wa.gov.au

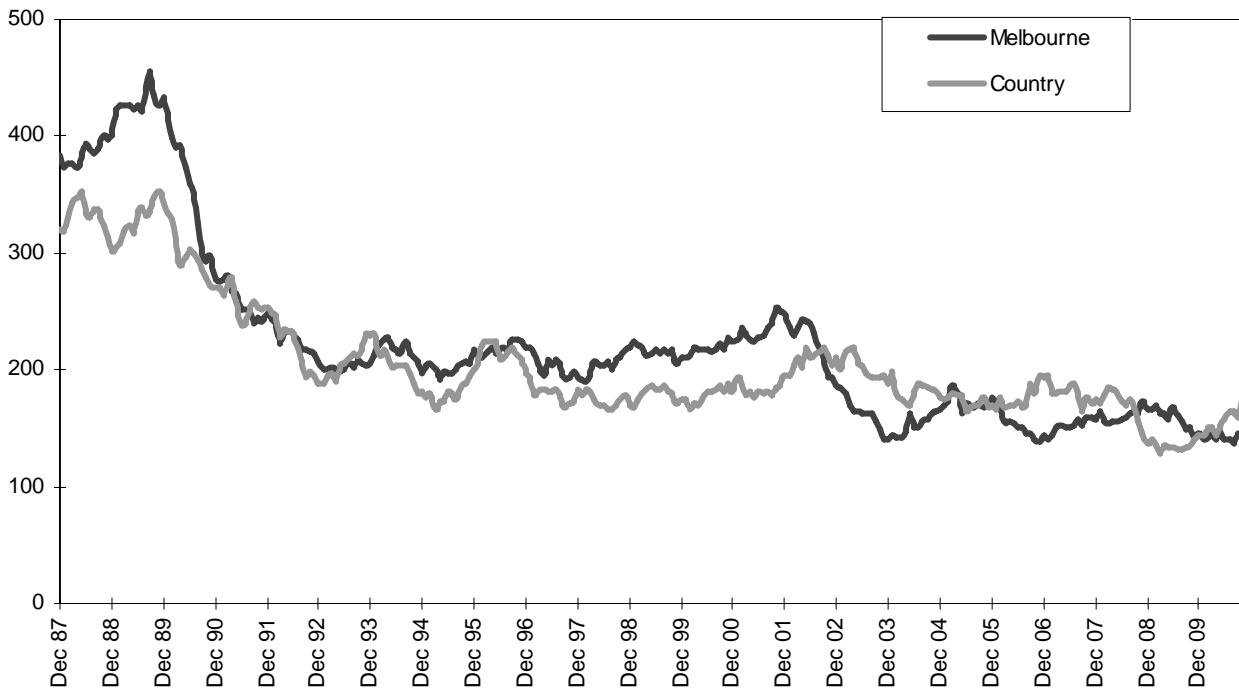
International Sites:

- National Highway Traffic Safety Admin (USA) www.nhtsa.dot.gov
- Swedish Road and Transport Institute (VTI) www.vti.se
- SWOV Institute for Road Safety Research www.swov.nl

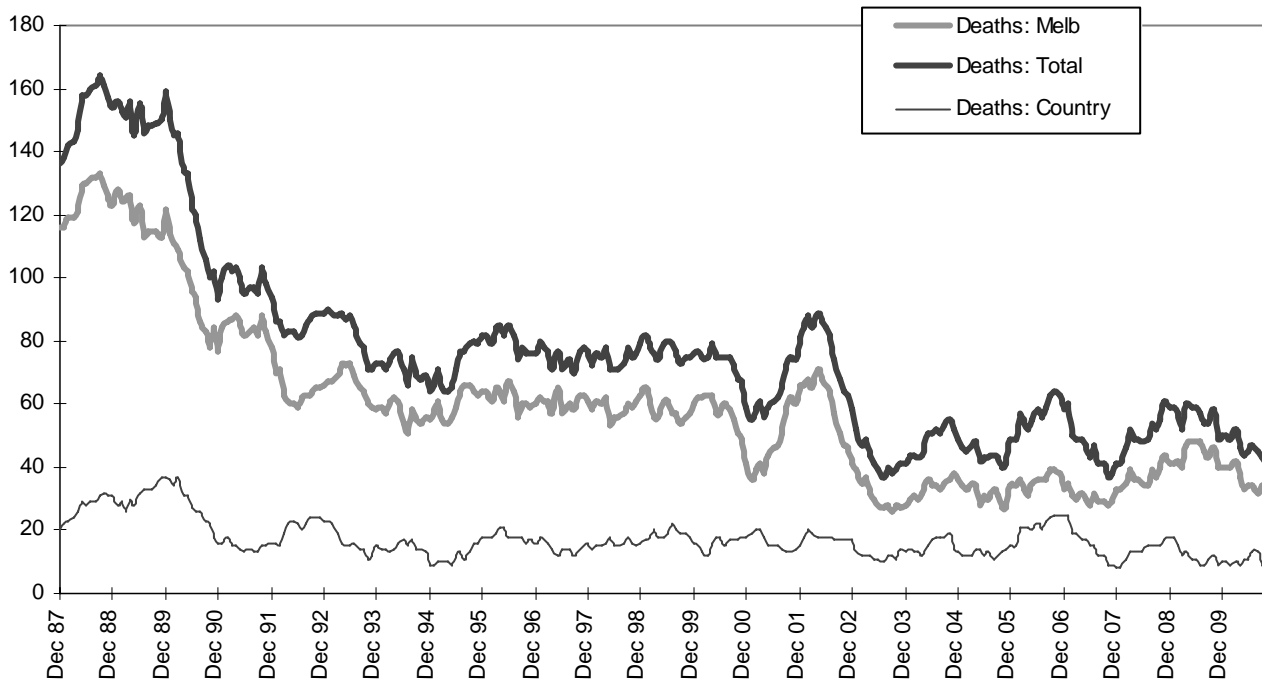
Related Sites:

- Australian Drug Foundation www.adf.org.au
- Bicycle Victoria www.bv.com.au

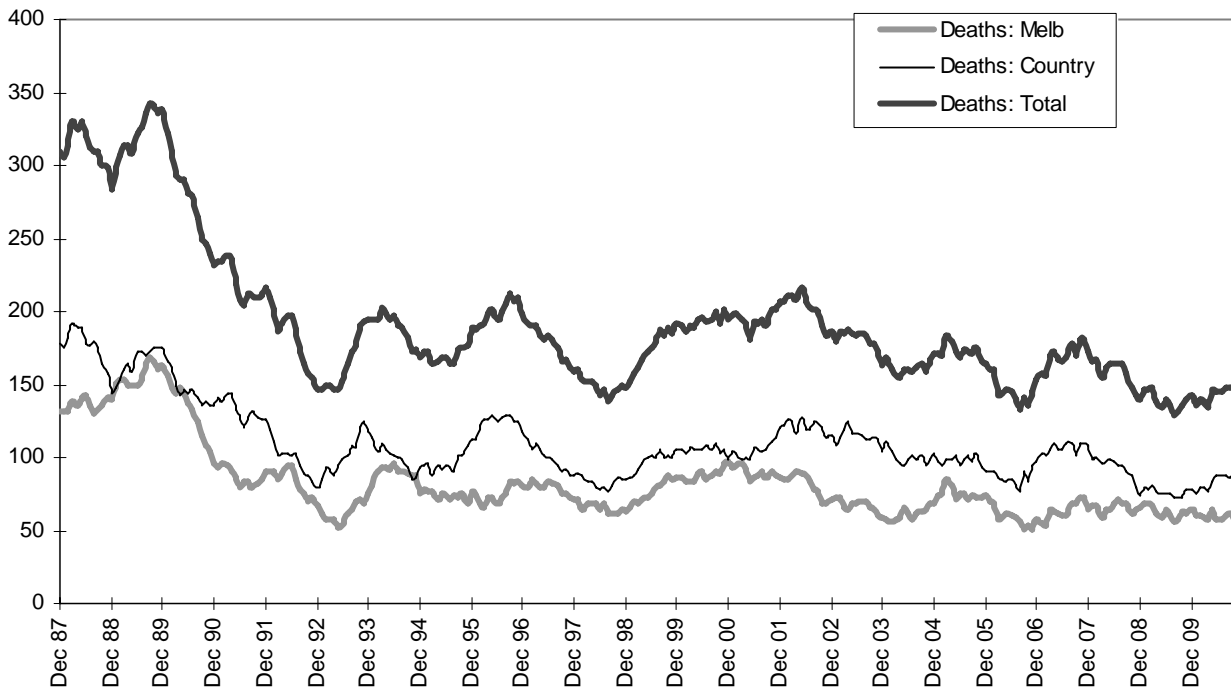
Graph 1 – Melbourne/country fatalities



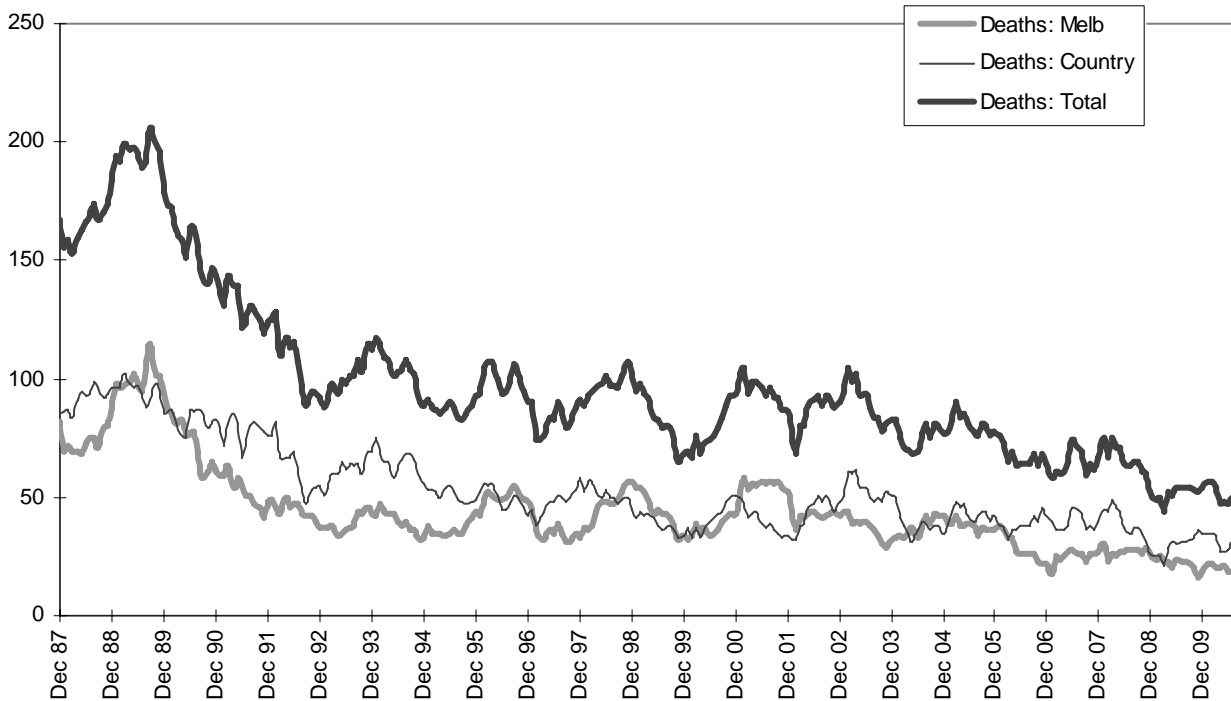
Graph 2a – Pedestrian fatalities (Melbourne/country)



Graph 2b – Driver fatalities (Melbourne/country)



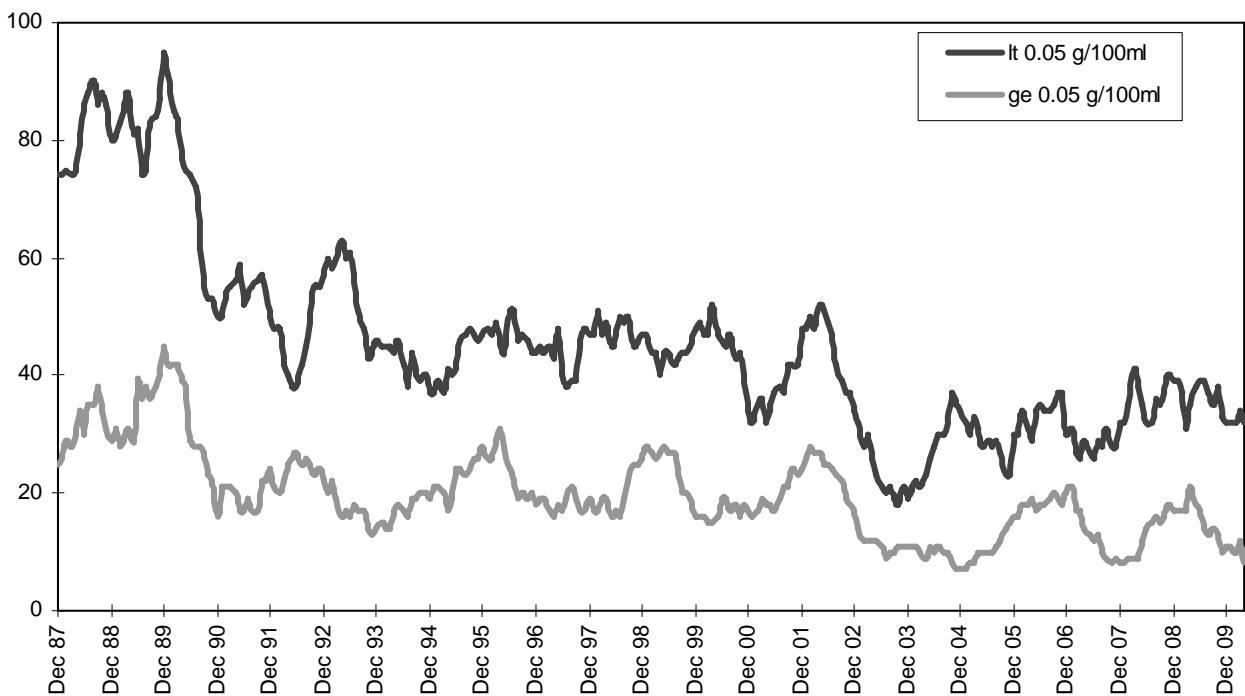
Graph 2c – Passenger fatalities (Melbourne/country)



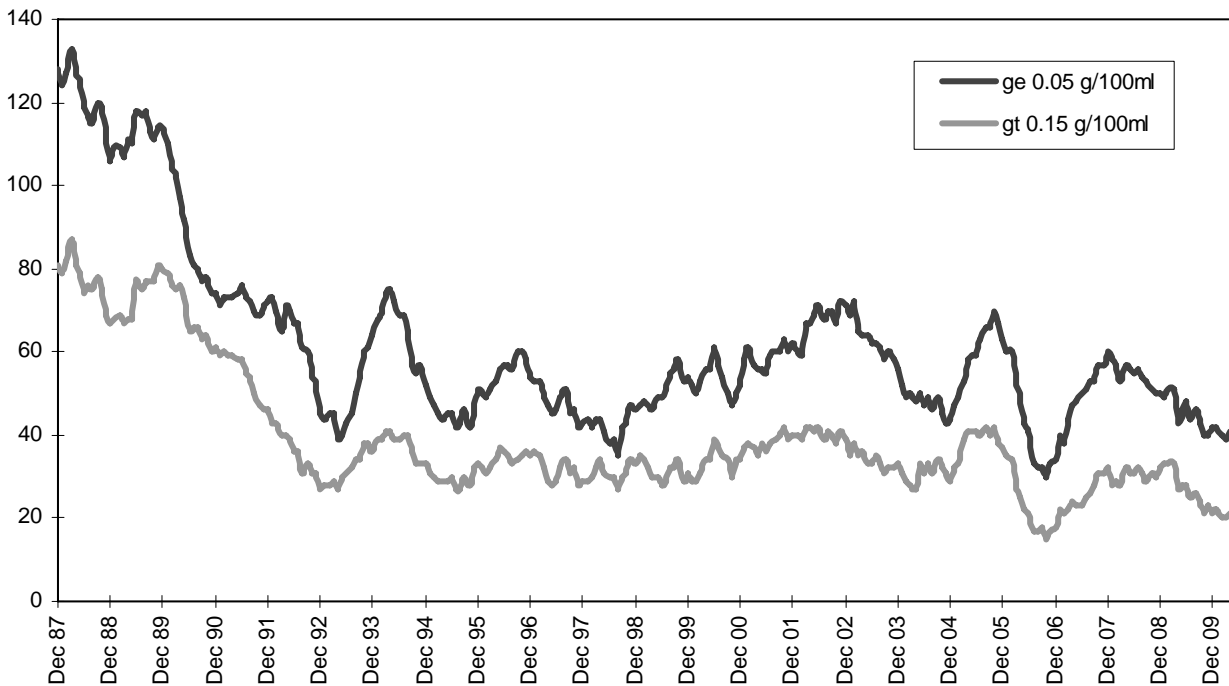
Graph 2d –Motorcyclist fatalities (Melbourne/country)



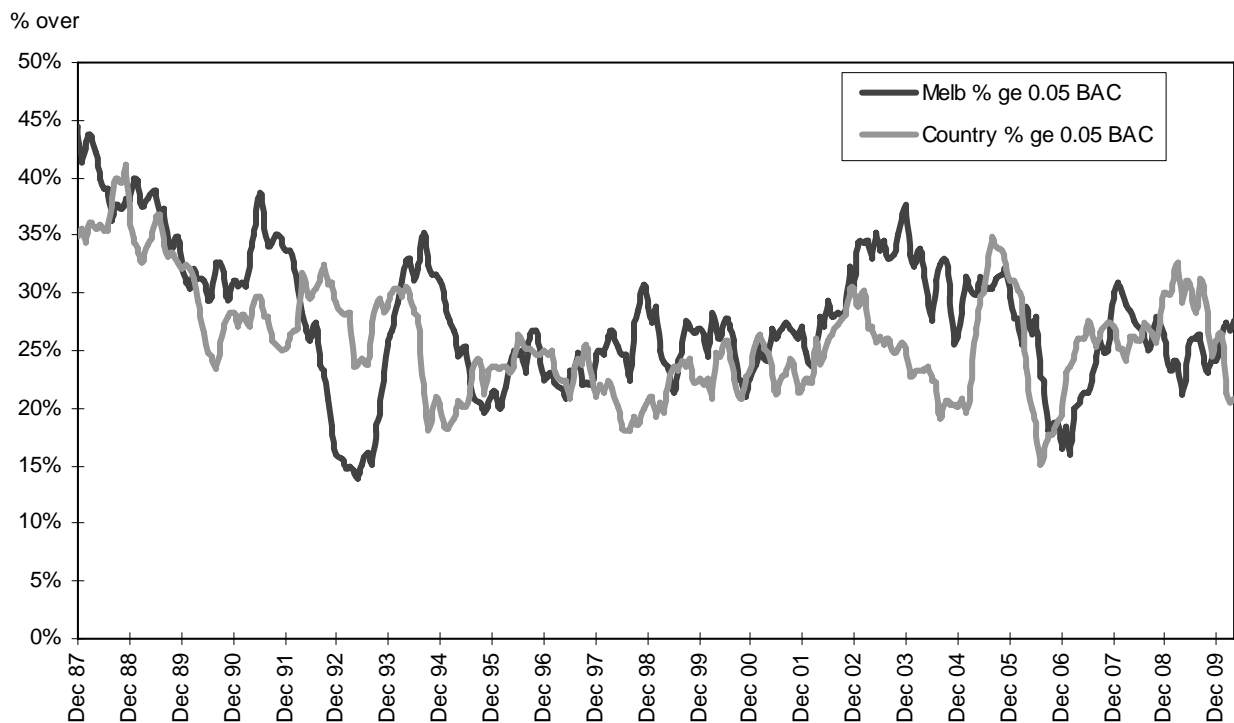
Graph 3a – Pedestrian deaths by BAC



Graph 3b – Driver/rider deaths by BAC



Graph 3c – Proportion of driver/rider deaths with a BAC ge 0.05



Graph 4a – Booze-Bus RBTs



Graph 4b – RBT: Percentage positive readings

